

UC Irvine

UC Irvine Previously Published Works

Title

Estimating optical properties in layered tissues by use of the Born approximation of the radiative transport equation.

Permalink

<https://escholarship.org/uc/item/9z156151>

Journal

Optics Letters, 31(8)

ISSN

0146-9592

Authors

Kim, Arnold D

Hayakawa, Carole

Venugopalan, Vasam

Publication Date

2006-04-15

DOI

10.1364/ol.31.001088

Copyright Information

This work is made available under the terms of a Creative Commons Attribution License, available at <https://creativecommons.org/licenses/by/4.0/>

Peer reviewed

Estimating optical properties in layered tissues by use of the Born approximation of the radiative transport equation

Arnold D. Kim

School of Natural Science, University of California, Merced, P. O. Box 2039, Merced, California 95344

Carole Hayakawa and Vasan Venugopalan

Laser Microbeam and Medical Program, Beckman Laser Institute, Department of Chemical Engineering and Materials Science, University of California, Irvine, Irvine, California 92697-2575

Received October 30, 2005; revised January 20, 2006; accepted January 22, 2006; posted January 27, 2006 (Doc. ID 65616)

We use the Born approximation of the radiative transport equation to recover simultaneously the absorption and scattering coefficients in a single layer of a two-layer tissue sample from reflectance data. This method reduces the estimation of both optical properties to a single linear, least-squares problem. It is valid over length scales smaller than a transport mean free path and hence is useful for epithelial tissue layers. We demonstrate the accuracy of this method by using spatially resolved reflectance data computed with Monte Carlo simulations. © 2006 Optical Society of America
OCIS codes: 170.3660, 030.5620, 100.3190.

Determining optical properties of layered tissue structures is important for biomedical diagnostics. Several methods to determine layered tissue properties have been developed, but the vast majority of them use the diffusion approximation of the radiative transport equation (RTE).^{1–3} These methods are limited to systems whose reduced scattering coefficients are much larger than their absorption coefficients ($\mu'_s \gg \mu_a$) and that have a minimum layer thickness of the order of a few transport mean free paths [$l^* \equiv 1/(\mu_a + \mu'_s)$]. However, several tissue systems exist that do not satisfy these requirements. Of prime importance is epithelial tissue, which consists of a cellular layer supported by an underlying stroma. The cellular layer has a characteristic thickness of $\lesssim 500 \mu\text{m}$, which is significantly smaller than a transport mean free path. Hence methods based on the diffusion approximation cannot be applied credibly for evaluation of epithelial–stromal transformations. Specialized techniques such as elastic scattering spectroscopy and differential path-length spectroscopy have been developed to measure properties of the epithelium alone.^{4,5} While they are valuable, such techniques are unable to measure and isolate concomitant changes in the underlying stroma.

Using the Born approximation (BA) of the RTE, we formulate a novel method with which to determine optical properties of layered media. This method applies over a broad range of optical properties and to layer thicknesses of the order of a single scattering mean free path. Using the BA, we recover simultaneously the absorption and scattering coefficients in a single layer of a two-layer medium from spatially resolved reflectance data. In the calculations that follow, we assume that the optical properties of the other layer are known *a priori*. However, this method extends readily for more general problems. The estimates for the optical properties are the solution of an $N \times 2$ linear, least-squares problem with $N \geq 2$ denot-

ing the number of measurements. Using Monte Carlo simulations for measured data, we show that this BA method is effective over a large range of parameter values.

Continuous-wave light transport in tissues is governed by the time-independent RTE

$$\boldsymbol{\omega} \cdot \nabla \Psi + \mu_a \Psi - \mu_s \mathcal{L} \Psi = Q. \quad (1)$$

The radiance Ψ depends on direction $\boldsymbol{\omega}$, a vector on unit sphere S^2 , and position \mathbf{r} . Here, μ_a and μ_s are the absorption and scattering coefficients, respectively. Scattering operator \mathcal{L} is defined as

$$\mathcal{L} \Psi = -\Psi + \int_{S^2} f(\boldsymbol{\omega}' \rightarrow \boldsymbol{\omega}) \Psi(\boldsymbol{\omega}', \mathbf{r}) d\boldsymbol{\omega}'. \quad (2)$$

The scattering phase function f gives the fraction of light traveling initially in direction $\boldsymbol{\omega}'$ that scatters into direction $\boldsymbol{\omega}$. In Eq. (1), Q denotes an interior source.

Green's function $G(\boldsymbol{\omega}, \mathbf{r}; \boldsymbol{\omega}', \mathbf{r}')$ for half-space $D = \{z > 0\}$ composed of a uniform turbid medium is the solution of Eq. (1) with μ_a and μ_s constants and $Q(\boldsymbol{\omega}, \mathbf{r}) = \delta(\boldsymbol{\omega} - \boldsymbol{\omega}') \delta(\mathbf{r} - \mathbf{r}')$, with $\mathbf{r}, \mathbf{r}' \in D$. In addition, we prescribe that Ψ satisfy the boundary condition

$$G|_{\boldsymbol{\omega}, z=0} = R(\boldsymbol{\omega}) G|_{-\boldsymbol{\omega}, z=0}, \quad \boldsymbol{\omega} \cdot \hat{\mathbf{z}} > 0. \quad (3)$$

Here $R(\boldsymbol{\omega})$ denotes the directional variation of the Fresnel reflection coefficient that is due to the refractive-index mismatch at the boundary. For this study we use the analytical representation of this half-space Green's function that is computed in terms of plane-wave solutions.^{6,7}

When the absorption and scattering coefficients are spatially heterogeneous, we represent them as

$$\mu_{a,s}(\mathbf{r}) = \mu_{a,s,0} + \delta\mu_{a,s}(\mathbf{r}), \quad (4)$$

respectively. According to the BA,

$$\Psi \approx \Psi_B = \Psi_0 - \mathcal{G}_D[\delta\mu_a\Psi_0] + \mathcal{G}_D[\delta\mu_s\mathcal{L}\Psi_0], \quad (5)$$

with Ψ_0 denoting the solution of the unperturbed problem. For a function $u(\omega, \mathbf{r})$ we define the operation $\mathcal{G}_D[u]$ used in relation (5) as

$$\mathcal{G}_D[u] = \int_D \int_{S^2} G(\omega, \mathbf{r}; \omega', \mathbf{r}') u(\omega', \mathbf{r}') d\omega' d\mathbf{r}'. \quad (6)$$

We now consider the half-space D to be composed of two layers. The top and bottom layers are denoted $D_t = \{0 < z < z_0\}$ and $D_b = \{z > z_0\}$, respectively. We assume that layer thickness z_0 is known. Suppose that either the top layer or the bottom layer has absorption and scattering coefficients $\mu_{a,s} = \mu_{a0,s0} + \delta\mu_{a,s}$, respectively, with $\delta\mu_a$ and $\delta\mu_s$ representing constant perturbations. We assume that the other layer is unperturbed, so its optical properties are μ_{a0} and μ_{s0} . Using relation (5), we model the reflectance for the two cases, $F_B^t(\rho)$ and $F_B^b(\rho)$, by

$$F_B^{t,b}(\rho) = F_0(\rho) - \delta\mu_a F_a^{t,b}(\rho) + \delta\mu_s F_s^{t,b}(\rho), \quad (7)$$

respectively. The quantities F_0 and $F_{a,s}^{t,b}$ are defined as

$$F_0(\rho) = \int_{S_{NA}^2} \omega \cdot \hat{z} \Psi_0(\omega, \rho, 0) d\omega, \quad (8a)$$

$$F_a^{t,b}(\rho) = \int_{S_{NA}^2} \omega \cdot \hat{z} \mathcal{G}_{D_{t,b}}[\Psi_0](\omega, \rho, 0) d\omega, \quad (8b)$$

$$F_s^{t,b}(\rho) = \int_{S_{NA}^2} \omega \cdot \hat{z} \mathcal{G}_{D_{t,b}}[\mathcal{L}\Psi_0](\omega, \rho, 0) d\omega. \quad (8c)$$

In Eqs. (8), S_{NA}^2 denotes the set of directions within the numerical aperture of the detector. Notice that in Eqs. (8b) and (8c) the spatial integration is restricted to either the top or the bottom layer.

Suppose that data are collected at $N \geq 2$ detectors located at ρ_1, \dots, ρ_N . Rearranging terms in Eq. (7), we obtain the following linear system:

$$A_{t,b} \begin{bmatrix} \delta\mu_a \\ \delta\mu_s \end{bmatrix} = \mathbf{y}. \quad (9)$$

Row n of the $N \times 2$ matrices $A_{t,b}$ is given by $[-F_a^{t,b}(\rho_n), F_s^{t,b}(\rho_n)]$. $N \times 1$ vector \mathbf{y} has entries $y_n = F_{\text{data}}(\rho_n) - F_0(\rho_n)$. In fact, only $N=2$ measurements are needed to compute the perturbations. However, we incorporate more measurements to help stabilize this system under the influence of instrument noise. Hence we seek the least-squares solution of Eq. (9) to obtain estimates for both $\delta\mu_a$ and $\delta\mu_s$.

To demonstrate the utility of our inversion scheme, we generate measured data $F_{\text{data}}(\rho)$ with Monte Carlo simulations of radiative transport in a two-layer model system representative of cervical epithelium. The epithelium is represented by a 500 μm thick cellular layer supported by a semi-infinite stromal layer (Fig. 1). The baseline optical properties in both layers are taken to be those of normal cervical stromal tissue at $\lambda=849 \text{ nm}$: $\mu_{a0}=0.034/\text{mm}$ and μ_{s0}'

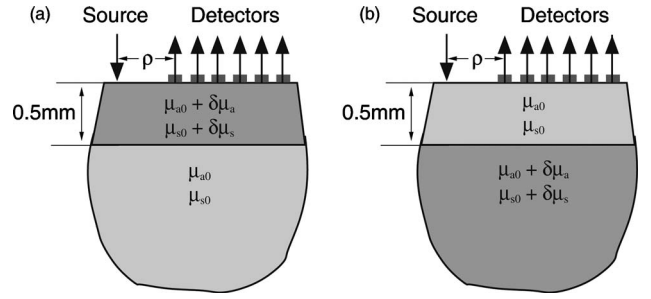


Fig. 1. Schematics of (a) top-layer and (b) bottom-layer perturbations.

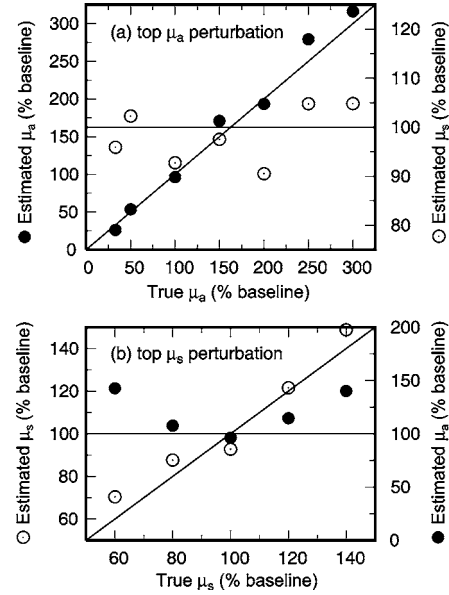


Fig. 2. Estimates of μ_a (\bullet) and μ_s (\circ) by the BA method for top-layer perturbations in (a) μ_a and (b) μ_s . The optical properties of the bottom layer are known *a priori* to be μ_{a0} and μ_{s0} .

$=\mu_{s0}(1-g)=0.611/\text{mm}$.⁸ The Henyey–Greenstein scattering phase function is used with asymmetry parameter $g=0.7$. With these optical properties, the cellular layer has a thickness of less than $l^*/3$. We employ six detectors, each with diameter 200 μm , located at source–detector separations of $\rho_1=0.7 \text{ mm}$, $\rho_2=1.1 \text{ mm}$, $\rho_3=2.0 \text{ mm}$, $\rho_4=2.5 \text{ mm}$, $\rho_5=3.0 \text{ mm}$, and $\rho_6=3.7 \text{ mm}$. The Monte Carlo simulations were run with 30×10^6 photons and 2% Gaussian noise added to the data to typify instrument noise.

For the simulations of measured data, we perturbed either μ_a or μ_s in either the top or the bottom layer. We assume that the optical properties in the unperturbed layer are known and are given by μ_{a0} and μ_{s0} . Changing only one parameter at a time in the simulated data tested the ability of our two-parameter inversion [Eq. (9)] to decouple and recover both $\delta\mu_a$ and $\delta\mu_s$. The ranges of μ_a and μ_s perturbations used here are representative of absorption and scattering properties measured from ten patients who exhibited high-grade squamous intraepithelial lesions.⁸

For μ_a and μ_s perturbations in the top layer [Fig. 1(a)], the recovered optical properties are shown in Fig. 2 by filled circles and by open circles, respec-

tively. In Fig. 2(a) we show results for seven simulated measurements in which μ_s is held fixed and μ_a varies from 33% to 300% of μ_{a0} . The diagonal line indicates the true values of μ_a , and the horizontal line indicates the true values of μ_s . The results show that the recovered values of μ_a and μ_s for all seven test cases have relative errors within 21% and 10%, respectively. In Fig. 2(b) we show results for five simulated measurements in which μ_a is held fixed and μ_s varies from 60% to 140% of μ_{s0} . The diagonal line indicates the true μ_s values, and the horizontal line indicates the true values of μ_a . For the data in which μ_s is perturbed, 80% to 120% of μ_{s0} , the recovered values of μ_a and μ_s have relative errors within 15% and 18%, respectively. Outside this range, the recovered values for μ_s are of similar quality. However, the recovered values of μ_a are poorer, with the maximum relative error exceeding 40%.

For μ_a and μ_s perturbations in the bottom layer [Fig. 1(b)], the recovered optical properties are shown in Fig. 3. In Fig. 3(a) we show results from seven simulated measurements in which μ_s is held fixed and μ_a varies from 33% to 300% of μ_{a0} . The recovered values of μ_a and μ_s have relative errors within 25% and 5%, respectively. The recovered values of μ_a degrade systematically as the perturbation grows. In Fig. 3(b) we show results from five simulated measurements in which μ_a is held fixed and μ_s varies from 60% to 140% of the baseline value. The recovered values of μ_a and μ_s have relative errors within 25% and 3%, respectively. The bottom-layer results are poorer than those of the top layer. This is so because the BA is less able to account for perturbations distributed over a large volume. Nonetheless, application of the BA to recover the optical properties of the bottom layer provides accurate trends of the per-

turbed variables. Moreover, it does so without significant coupling between the optical parameters.

We have demonstrated the use of the Born approximation of the radiative transport equation to estimate optical properties in a single layer of a two-layer medium. This method applies to systems with length scales smaller than l^* because it is based on the RTE rather than on the diffusion approximation. The BA of the RTE has been used in imaging applications of photon migration.^{9,10} Our implementation of the BA of the RTE for the two-layer problem uses an analytical representation of Green's function and yields an $N \times 2$ linear, least-squares problem. Hence the associated computational costs are small.

This method requires knowledge of the optical properties of some reference medium that is close to the true medium. This *a priori* information is contained implicitly in the computation of the half-space Green's function. Nonetheless, this method yields results that are accurate for a broad range of optical parameters ($6 \lesssim \mu'_s/\mu_a \lesssim 25$) that are not close to the reference medium. These data suggest that the method does not depend strongly on this *a priori* knowledge. Moreover, we have assumed here knowledge of asymmetry parameter g and layer thickness z_0 and of which layer is perturbed. However, the BA is not restricted by these assumptions and can be generalized to take them into account. These issues require more attention and will be subjects of future research that includes validation by use of experimental measurements of layered tissue phantoms.

The work of A. D. Kim (adkim@ucmerced.edu) is supported by the National Science Foundation through grant DMS-0504858. C. Hayakwa and V. Venugopalan are supported by the National Institutes of Health through grants R01-EB00345 and P41-RR01192.

References

1. G. Alexandrakakis, T. J. Farrell, and M. S. Patterson, *Appl. Opt.* **37**, 7401 (1998).
2. M. A. Franceschini, S. Fantini, L. A. Paunescu, J. S. Maier, and E. Gratton, *Appl. Opt.* **37**, 7447 (1998).
3. A. Kienle, M. S. Patterson, N. Dögnitz, R. Bays, G. Wagneiers, and H. van den Bergh, *Appl. Opt.* **37**, 779 (1998).
4. V. Backman, R. Gurjar, K. Badizadegan, I. Itzkan, R. Dasari, L. T. Perelman, and M. S. Feld, *IEEE J. Sel. Top. Quantum Electron.* **5**, 1019 (1999).
5. A. Amelink, H. J. C. M. Sterenborg, M. P. L. Bard, and S. A. Burgers, *Opt. Lett.* **29**, 1087 (2004).
6. A. D. Kim, *J. Opt. Soc. Am. A* **21**, 797 (2004).
7. A. D. Kim, *Waves Random Complex Media* **15**, 17 (2005).
8. R. Hornung, T. H. Pham, K. A. Keefe, M. W. Berns, Y. Yadiri, and B. J. Tromberg, *Hum. Reprod.* **14**, 2908 (1999).
9. A. K. Dunn and D. A. Boas, *Opt. Lett.* **25**, 1777 (2000).
10. M. Xu, W. Cai, M. Lax, and R. R. Alfano, *Opt. Lett.* **26**, 1066 (2001).

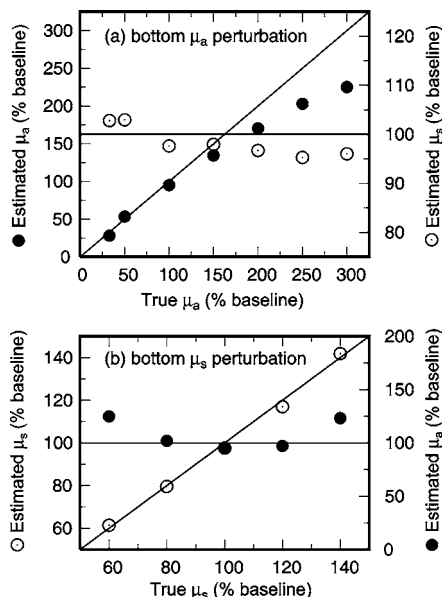


Fig. 3. Estimates of μ_a (•) and μ_s (◊) by the BA method for bottom-layer perturbations in (a) μ_a and (b) μ_s . The optical properties of the top layer are known *a priori* to be μ_{a0} and μ_{s0} .