

# UCSF

## UC San Francisco Previously Published Works

### Title

A PERIOD3 variant causes a circadian phenotype and is associated with a seasonal mood trait.

### Permalink

<https://escholarship.org/uc/item/9xf2f8vn>

### Journal

Proceedings of the National Academy of Sciences of the United States of America, 113(11)

### ISSN

0027-8424

### Authors

Zhang, Luoying  
Hirano, Arisa  
Hsu, Pei-Ken  
et al.

### Publication Date

2016-03-01

### DOI

10.1073/pnas.1600039113

Peer reviewed

# A *PERIOD3* variant causes a circadian phenotype and is associated with a seasonal mood trait

Luoying Zhang<sup>a,1</sup>, Arisa Hirano<sup>a,1</sup>, Pei-Ken Hsu<sup>a</sup>, Christopher R. Jones<sup>b</sup>, Noriaki Sakai<sup>c</sup>, Masashi Okuro<sup>c</sup>, Thomas McMahon<sup>a</sup>, Maya Yamazaki<sup>a</sup>, Ying Xu<sup>a</sup>, Noriko Saigoh<sup>a</sup>, Kazumasa Saigoh<sup>a,2</sup>, Shu-Ting Lin<sup>a</sup>, Krista Kaasik<sup>a</sup>, Seiji Nishino<sup>c</sup>, Louis J. Ptáček<sup>a,d,3</sup>, and Ying-Hui Fu<sup>a,3</sup>

<sup>a</sup>Department of Neurology, University of California, San Francisco, CA 94143; <sup>b</sup>Department of Neurology, University of Utah, Salt Lake City, UT 84132; <sup>c</sup>Sleep and Circadian Neurobiology Laboratory, Stanford University, Palo Alto, CA 94304; and <sup>d</sup>Howard Hughes Medical Institute, University of California, San Francisco, CA 94143

Contributed by Louis J. Ptáček, January 4, 2016 (sent for review October 5, 2015; reviewed by Nelson B. Freimer, Daniel H. Geschwind, and Emmanuel J. M. Mignot)

In humans, the connection between sleep and mood has long been recognized, although direct molecular evidence is lacking. We identified two rare variants in the circadian clock gene *PERIOD3* (*PER3-P415A/H417R*) in humans with familial advanced sleep phase accompanied by higher Beck Depression Inventory and seasonality scores. *hPER3-P415A/H417R* transgenic mice showed an altered circadian period under constant light and exhibited phase shifts of the sleep-wake cycle in a short light period (photoperiod) paradigm. Molecular characterization revealed that the rare variants destabilized PER3 and failed to stabilize PERIOD1/2 proteins, which play critical roles in circadian timing. Although *hPER3-P415A/H417R-Tg* mice showed a mild depression-like phenotype, *Per3* knockout mice demonstrated consistent depression-like behavior, particularly when studied under a short photoperiod, supporting a possible role for PER3 in mood regulation. These findings suggest that PER3 may be a nexus for sleep and mood regulation while fine-tuning these processes to adapt to seasonal changes.

circadian clock | circadian rhythms | familial advanced sleep phase | seasonal affective disorder | PER3

In human populations, alterations in circadian timing can result in mood-related problems (1). An example of this is seasonal affective disorder, also known as “winter depression,” which is among the most common mood disorders, with a reported prevalence of 1.5–9%, depending on latitude (2). In addition, shift work has been suggested as a risk factor for major depressive disorder (3), and depression severity correlates with the degree of circadian misalignment (4, 5). A number of genetic variants in core clock genes have been reported as statistically associated with mood disorders, including seasonal affective disorder and major depressive disorder (6–14), but to date none has been causally related with an understanding of specific molecular links.

Familial advanced sleep phase (FASP) is a human behavioral phenotype defined by early sleep time and early morning awakening (15). We previously identified mutations in core clock genes that cause FASP by linkage analysis/positional cloning (16) and candidate gene sequencing (17, 18). Here we identify two rare missense variants in *PER3* (*PER3-P415A/H417R*) that cause FASP and are associated with elevated Beck Depression Inventory (BDI) and seasonality scores. Transgenic mice carrying human *PER3-P415A/H417R* exhibit delayed phase in a short photoperiod and a lengthened period of wheel-running rhythms in constant light. At a molecular level, the rare variants lead to decreased PER3 protein levels, likely due to decreased protein stability. Moreover, we found that *PER3-P415A/H417R* can exert effects on the clock (at least in part) by reducing its stabilizing effect on PER1 and PER2. Although *hPER3-P415A/H417R* transgenic mice display mild measures of depression-like phenotype, *Per3*<sup>-/-</sup> mice exhibit consistent depression-like behaviors in multiple tests. The differences are particularly evident in short photoperiods, implying a role for PER3 in mood regulation. Taken together,

these results support a role for PER3 in modulating circadian clock and mood that may be especially critical under conditions of short photoperiod (e.g., during the winter season).

## Results

**Rare PER3 Variants Found in FASP and Seasonal Affective Disorder Subjects.** The proband of this study was noted to have advanced sleep phase, accompanied by increased depressive mood and global seasonality scores (GSS) (Table 1). Further assessment of related family members revealed an autosomal-dominant transmission of these traits (Fig. 1A and Table 1). A total of three individuals were found to have FASP, with much earlier sleep onset and offset times compared with unaffected family members and conventional sleepers (sleep onset time, 00:15; sleep offset time, 8:15; [euclock.org](http://euclock.org)). The midsleep times for these individuals were within the earliest ~2–3% of the general population (19). All three individuals had high scores on the Horne-Ostberg Questionnaire, which assesses morning-evening preference; individuals with a score of ≥70 are considered extreme “morning types” (20).

All three individuals also showed clinical features of seasonal affective disorder with mildly to moderately elevated BDI scores (>73%~84% of the general population) (Table 1) (21, 22). The affected subjects exhibited characteristics of seasonal affective

## Significance

It has long been thought that sleep and mood are intimately connected in humans, but at present there are no known molecular links. We identified rare variants in the *PERIOD3* gene in persons with both altered sleep behavior and features of seasonal affective disorder. We show that these variants recapitulate circadian and mood phenotypes in mouse models. Although we were not able to test mood in fruit flies, we did uncover a sleep trait similar to that seen in humans in flies carrying the human variants. Our molecular studies reveal that the variants led to less stable PER3 protein and reduced the stabilizing effect of PER3 on PER1/PER2, providing a mechanistic explanation for the circadian trait.

Author contributions: L.Z., L.J.P., and Y.-H.F. designed research; L.Z., A.H., P.-K.H., C.R.J., N. Sakai, M.O., T.M., M.Y., N. Saigoh, K.S., S.-T.L., and K.K. performed research; Y.X. and S.N. contributed new reagents/analytic tools; L.Z., A.H., P.-K.H., C.R.J., N. Sakai, and M.O. analyzed data; and L.Z., A.H., L.J.P., and Y.-H.F. wrote the paper.

Reviewers: N.B.F., UCLA Center for Neurobehavioral Genetics; D.H.G., University of California Los Angeles; and E.J.M.M., Stanford University School of Medicine.

The authors declare no conflict of interest.

<sup>1</sup>L.Z. and A.H. contributed equally to this work.

<sup>2</sup>Present address: Faculty of Medicine, Department of Neurology, Kinki University, 577-8502 Osaka, Japan.

<sup>3</sup>To whom correspondence may be addressed. Email: [ljp@ucsf.edu](mailto:ljp@ucsf.edu) or [Ying-Hui.fu@ucsf.edu](mailto:Ying-Hui.fu@ucsf.edu).

This article contains supporting information online at [www.pnas.org/lookup/suppl/doi:10.1073/pnas.1600039113/-DCSupplemental](http://www.pnas.org/lookup/suppl/doi:10.1073/pnas.1600039113/-DCSupplemental).

**Table 1. Clinical variables of the human subjects**

Subject	Age, y	Status	Sleep onset	Sleep offset	Mid-sleep time on free days	HO score	BDI score	GSS	Problem Severity Score	Worst month(s) of the year
42637*	68	C	19:30	2:30	23:00	78	18	13	4	December, January
101334	67	C	21:33	5:30	1:32	73	15	10	2	No worst month
100726	48	C	19:00 (winter) 00:00 (summer)	3:00 (winter) 8:00 (summer)	23:00 (winter) 4:00 (summer)	68	21	18	3	December
101323	45	NC	23:07	7:45	3:26	52	3	1	0	No worst month

C, mutation carrier; NC, nonmutation carrier, HO, Horne–Ostberg.  
\*Proband.

disorder with a GSS higher than that of 96.90%~99.99% of the general population and a high Problem Severity Score (23, 24). In addition, two of the individuals reported that their worst months are in the winter.

While screening candidate circadian genes for mutations related to the FASP phenotype, we identified a C-to-G change and an A-to-G change in *PER3*, resulting in proline-to-alanine and histidine-to-arginine changes at amino acids 415 and 417 of the protein, respectively (Fig. 1B). These two rare variants (P415A and H417R) occur at residues that are conserved in vertebrate *PER3*. In addition, P415 is conserved in both *PER1* and *PER2*, whereas H417 is conserved only in *PER1*. These two missense variants are on the same allele and cosegregate with FASP and mood traits. They were not found in any of more than 250 control DNA samples, although they do exist in the general population at an allele frequency of 0.55% (1000 Genomes Project). Given that the prevalence of major depressive episode is ~17% in the US (25), and because patients with depression manifest circadian disruptions in behavior and physiology (26), we reason that the existence of these rare variants in the public database does not eliminate the possibility of them being causative of FASP and seasonal affective disorder.

**PER3-P415A/H417R Alters Circadian Rhythms.** To test whether *PER3-P415A/H417R* variants cause FASP and the mood traits instead of merely being indirectly associated with them, we generated *hPER3-WT* (*hPER3-WT-Tg*) and *hPER3-P415A/H417R* (*hPER3-P415A/H417R-Tg*) transgenic mice using a human bacterial artificial chromosome (BAC) clone carrying the entire *hPER3* gene. Under 12 h light/12 h dark (LD 12:12) and constant darkness (DD) conditions, we found no substantial difference in wheel-running rhythms between *hPER3-WT-Tg* and *hPER3-P415A/H417R-Tg* mice (Fig. 2A and B).

We next subjected the animals to a constant light (LL) to test whether the rare variants alter the effects of light on the clock. Interestingly, in contrast to *Per3* knockout mice, which have a shortened period under LL (27), the behavioral period of *hPER3-P415A/H417R-Tg* mice was significantly longer than that of *hPER3-WT-Tg* mice (Fig. 2B and C). Given that one of the human subjects displayed advanced phase only during winter, when photoperiods are short (Table 1), we monitored *hPER3-P415A/H417R-Tg* mice in 4-h light/20-h dark cycles (LD 4:20) and observed a ~4-h phase delay in activity onset and offset time vs. WT (Fig. 2D–F). We found no phase delay in wheel-running rhythms under LD 4:20 in *hPER3-WT-Tg*, WT, and *Per3*<sup>-/-</sup> mice, however (Fig. 2D–F). These results support a dominant effect of *PER3-P415A/H417R* over *PER3-WT* on the light-sensing pathway(s) in mice.

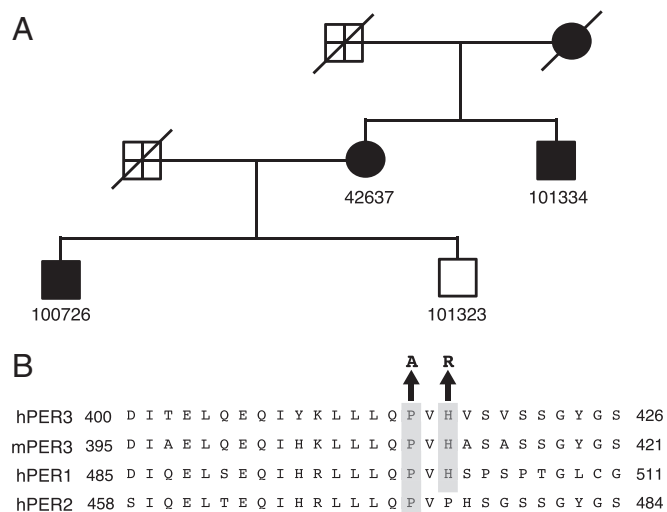
We also generated and characterized transgenic flies carrying either WT or mutant human *PER3* (Fig. S1 and Tables S1 and S2). Interestingly, flies expressing *hPER3-P415A/H417R* showed significantly earlier activity offset time compared with *hPER3-WT* flies (Fig. S1A and Table S1). In addition, the period of activity rhythms was significantly shorter in the *hPER3-P415A/H417R* flies under DD (Fig. S1A and Table S2). These results

suggest that the *hPER3-P415A/H417R* produces similar effects on diurnal flies as those seen in human FASP subjects.

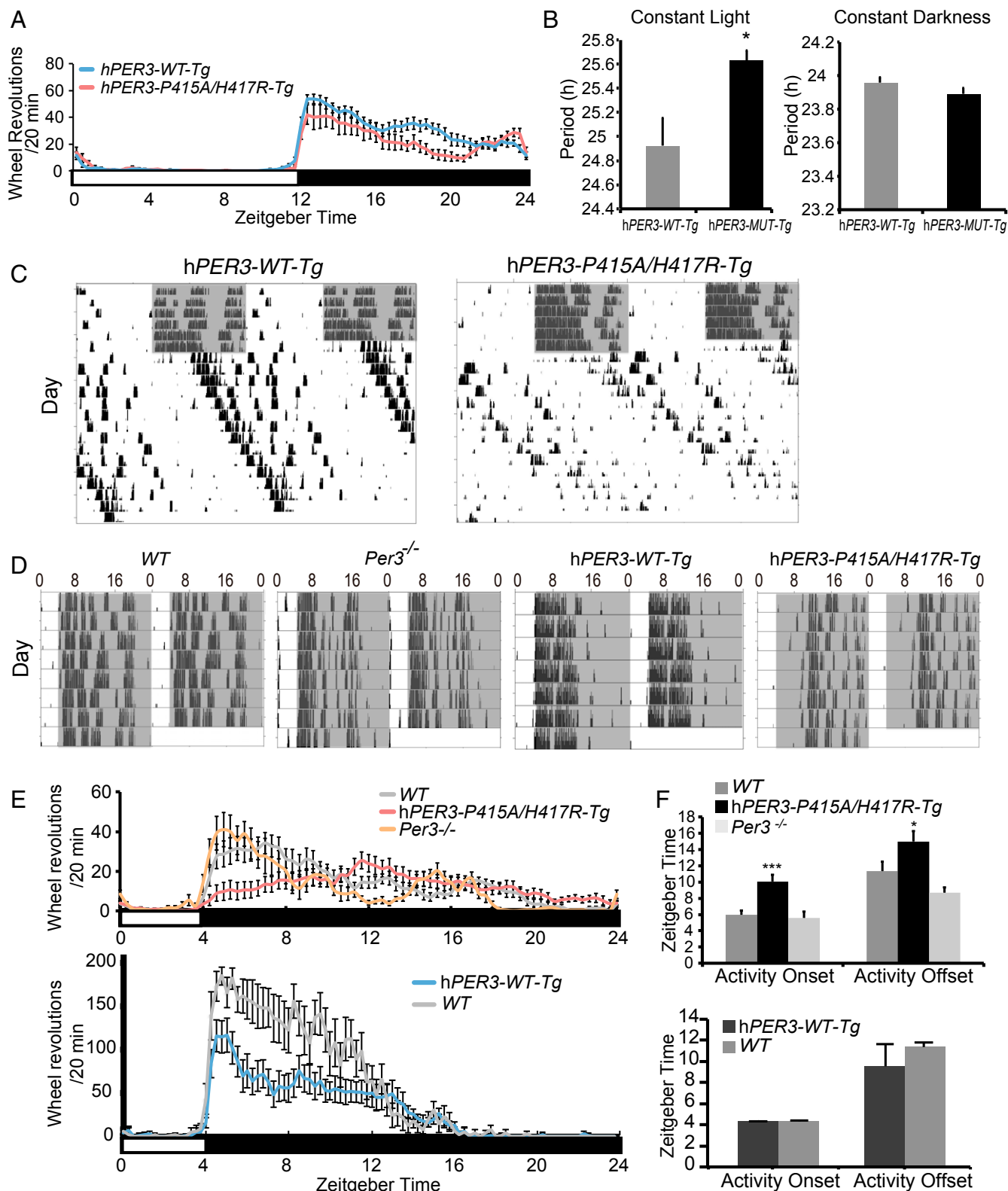
**PER3-P415A/H417R Has Reduced Repressor Activity and Is Less Stable Than PER3-WT.** To test whether the rare variants affect *PER3* repressor activity, we used a *Per2* promoter-driven luciferase reporter assay to determine the repressive activity of WT and P415A/H417R *PER3* proteins. *PER3-P415A/H417R* demonstrated consistently reduced repressor activity compared with *PER3-WT*, suggesting that these variants make *PER3* a weaker repressor (Fig. 3A).

Based on the persistently lower levels of mutant protein compared with WT protein (Fig. 3B), we tested whether the rare variants affect *PER3* by altering protein stability. Through continuous recording of bioluminescence activity, we found that the bioluminescence decay of *PER3-LUC* after treatment with a protein synthesis inhibitor, cycloheximide (CHX), was significantly accelerated by the P415A/H417R variants (Fig. 3C). On Western blot analysis, we also found that relative FLAG-*PER3-P415A/H417R* protein level was lower after CHX treatment compared with that of *PER3-WT* (Fig. 3D), indicating that P415A/H417R variants destabilize *PER3* protein.

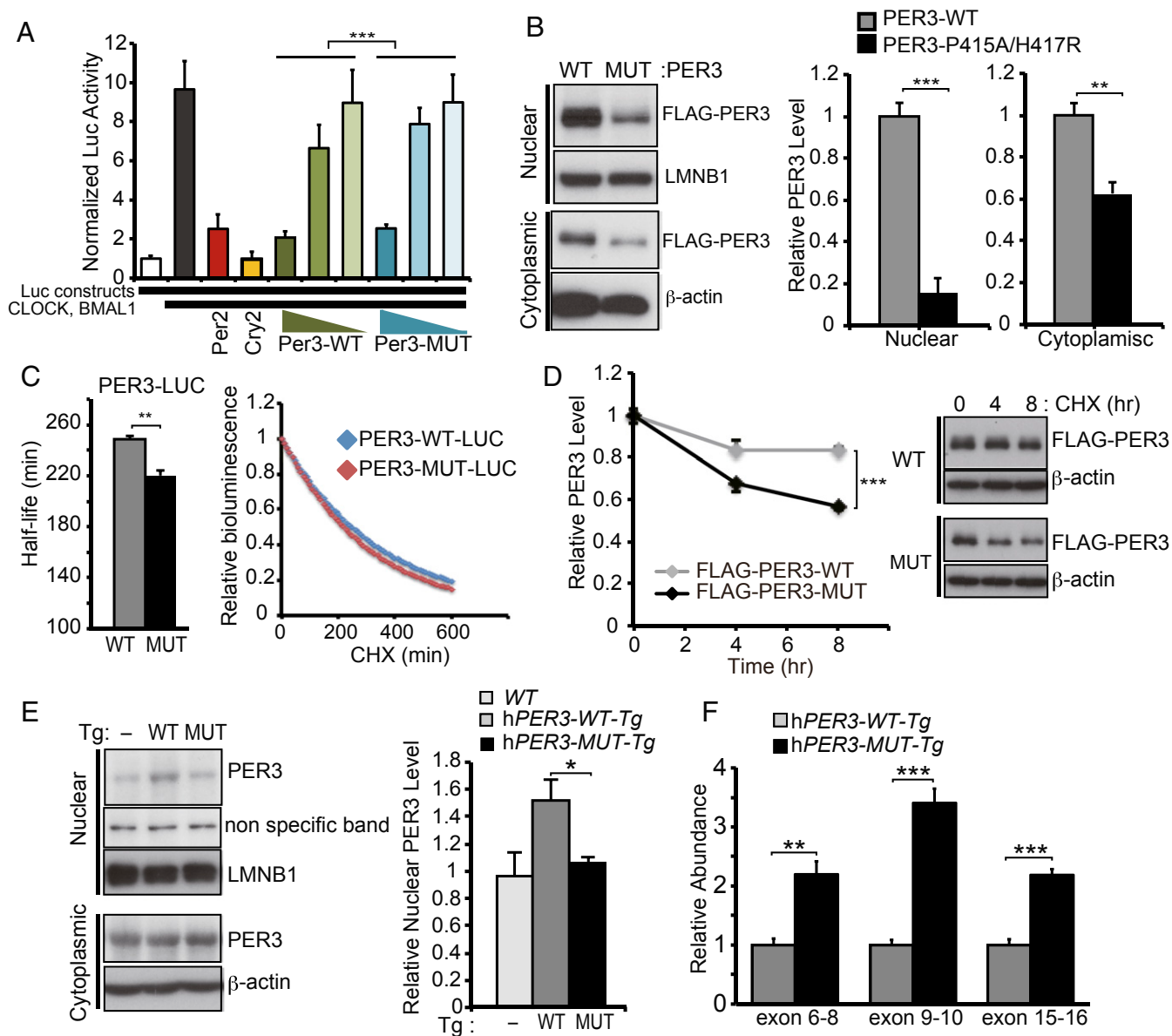
To determine whether the *PER3-P415A/H417R* protein levels in transgenic animal models are also altered in vivo, we assessed *hPER3* levels for *hPER3-WT-Tg* and *hPER3-P415A/H417R-Tg* mice. Nuclear *hPER3* protein levels were significantly lower in



**Fig. 1.** FASP pedigree and the amino acid alignment around the rare variants. (A) FASP kindred 7107. Circles represent women; squares, men. Filled symbols denote affected individuals; open symbols, unaffected individuals. Symbols marked with a cross are unknown (i.e., do not meet criteria for affected or unaffected). Diagonal lines through symbols indicate that the individual is deceased. Subject 42637 is the proband. (B) Alignments for human (h) and mouse (m) *PER* proteins in the region harboring the variants. The P415A/H417R variants are highlighted.



**Fig. 2.** Expression of PER3-P415A/H417R in mice lengthens the period and delays the phase of activity rhythm. (A) Wheel-running activity profiles of hPER3-WT-Tg and hPER3-P415A/H417R-Tg mice during LD 12:12 ( $n = 7-13$ ). (B) The period of wheel-running activity under LL and DD conditions, respectively ( $n = 7-29$ ).  $*P < 0.05$ , Student's  $t$  test. (C) Double-plotted actograms of wheel-running activity (black bars) for representative hPER3-WT-Tg and hPER3-P415A/H417R-Tg mice. Gray areas indicate periods of darkness before release into LL. (D) Double-plotted actograms of wheel-running activity for representative WT, Per3<sup>-/-</sup>, hPER3-WT-Tg, and hPER3-P415A/H417R-Tg mice during LD 4:20. (E) Wheel-running activity profiles of WT, hPER3-P415A/H417R-Tg, and Per3<sup>-/-</sup> mice (Upper) and WT and hPER3-WT-Tg mice (Lower) during LD 4:20 ( $n = 6-20$ ). (F) Activity onset and offset time under LD 4:20 ( $n = 6-20$ ).  $*P < 0.05$ ,  $***P < 0.005$ , Student's  $t$  test. The white bars indicate light periods; black bars, dark periods. Error bars represent SEM.



**Fig. 3.** P415A/H417R variants destabilize PER3. (A) Repressor activity of WT or P415A/H417R PER3 protein on CLOCK-BMAL1-mediated expression of *Per2* promoter-driven luciferase was examined by a reporter assay performed in HEK293T cells ( $n = 3$ ). Luciferase activity was normalized to activity levels in the absence of CLOCK and BMAL1 (white column). Addition of CLOCK and BMAL1 resulted in a nearly 10-fold increase in luciferase activity (black column). PER3-P415A/H417R had reduced repressor activity across different titers compared with PER3-WT. PER2 (red column) and CRY2 (yellow column) were positive controls for repressor activity.  $***P < 0.001$ , two-way ANOVA. (B) PER3 protein levels in the nuclear and the cytoplasmic fractions. HEK293T cells were transfected with indicated plasmid vectors. At 48 h after transfection, the cells were harvested and then fractionated into nuclear and cytoplasmic fractions. Results are expressed as mean  $\pm$  SEM ( $n = 3$ ).  $**P < 0.01$ ,  $***P < 0.005$ , Student's *t* test. (C) HEK293T cells were transfected with indicated plasmid vectors. At 24 h after transfection, the culture medium was replaced by measuring medium containing CHX (100  $\mu$ g/mL). Bioluminescence was measured at 10-min intervals. Bioluminescence at time point 0 was set to 1. Half-lives of PER3-LUCs were calculated by fitting the bioluminescence signals to exponential functions. Error bars show mean  $\pm$  SEM ( $n = 3$ ).  $**P < 0.01$ , Student's *t* test. (D) HEK293T cells were transfected with indicated plasmid vectors. At 40 h after transfection, the cells were treated with CHX (100  $\mu$ g/mL) for 4 or 8 h. PER3 protein levels at time point 0 were set to 1, and relative PER3 protein levels were plotted. Error bars show mean  $\pm$  SEM ( $n = 3$ ).  $***P < 0.005$ , Student's *t* test. (E) Western blots of nuclear and cytoplasmic fractions of liver extracts from *hPER3-WT-Tg* and *hPER3-P415A/H417R-Tg* mice at ZT12. LMNB1 and  $\beta$ -actin served as loading controls in the nuclear and cytoplasmic fractions, respectively. Nuclear PER3 protein levels were normalized to LMNB1 levels and are expressed as mean  $\pm$  SEM ( $n = 3$  per genotype).  $*P < 0.05$ , Student's *t* test. (F) Expression levels of *hPER3* mRNA in liver extracts from *hPER3-WT-Tg* and *hPER3-P415A/H417R-Tg* animals ( $n = 5$  per genotype), as assayed by three independent TaqMan qPCR assays across different exon boundaries. Expression levels in *hPER3-P415A/H417R-Tg* mice were normalized to those in *hPER3-WT-Tg* mice. Results are expressed as mean  $\pm$  SEM.  $**P < 0.01$ ,  $***P < 0.001$ , Student's *t* test.

the *hPER3-P415A/H417R-Tg* mice compared with the *hPER3-WT-Tg* mice (Fig. 3E). *hPER3* protein levels in cytoplasmic fractions were comparable in the two mouse strains, even though *hPER3* RNA expression level was twofold to threefold greater in the *hPER3-P415A/H417R-Tg* mice (Fig. 3F). Similarly, *hPER3*

levels were significantly lower in *hPER3-P415A/H417R* compared with *PER3-WT* transgenic flies (Fig. S2 A–C). These results indicate that consistent with *in vitro* data, P415A/H417R variants lead to decreased *hPER3* protein levels *in vivo* as a result of decreased protein stability.

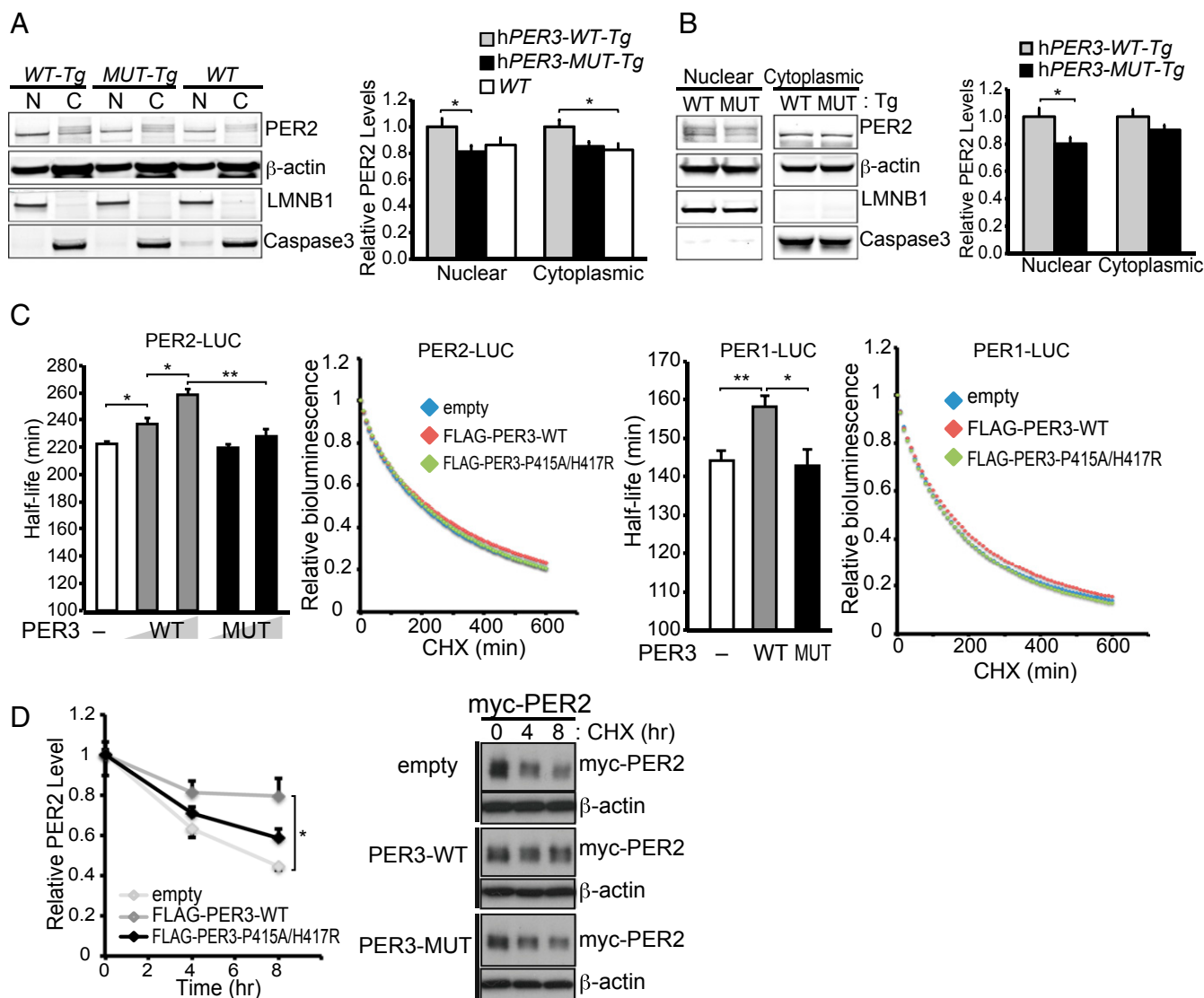


### PER3-P415A/H417R Has Reduced Ability to Stabilize PER1 and PER2.

Previous studies have demonstrated that PER3 functions to promote nuclear translocation of PER1 and PER2 (28). We tested whether mutant PER3 exerts any influence on the clock by impinging on nuclear/cytoplasmic distribution of PER1 and/or PER2. We assessed nuclear and cytoplasmic mPER1 and mPER2 protein levels in *hPER3-WT-Tg* and *hPER3-P415A/H417R-Tg* mice and found that mPER1 levels were significantly reduced in cytoplasmic fractions from the *hPER3-P415A/H417R-Tg* mice, but that the differences for nuclear fractions did not reach statistical significance (Fig. S3). In addition, mPER2 levels were significantly lower in both the nuclear and cytoplasmic fractions of hypothalamus from the *hPER3-P415A/H417R-Tg* mice (Fig. 4A). We also

observed a similar trend for mPER2 in the liver, although it did not reach statistical significance for the cytoplasmic fractions (Fig. 4B). Thus, PER1 and PER2 levels are lower in the presence of PER3-P415A/H417R vs. PER3-WT *in vivo*. Even though the *Drosophila* PER protein sequence is poorly conserved in this region, dPER protein is affected by the human variants; we found that dPER protein levels were significantly lower in *hPER3-P415A/H417R* flies compared with *hPER3-WT* flies.

To further explore the effects of PER3-P415A/H417R on PER1/PER2, we coexpressed hPER1/hPER2 with hPER3-WT or hPER3-P415A/H417R in HEK293T cells and then treated the cells with CHX. We measured the half-lives of PER1 and PER2 through a bioluminescence degradation analysis. Interestingly, PER3-WT



**Fig. 4.** PER3-P415A/H417R has reduced ability to stabilize PER1/PER2. (A and B) (Left) representative Western blots of PER2 in nuclear and cytoplasmic fractions of hypothalamus (A) and liver (B) of *hPER3-WT-Tg* and *hPER3-P415A/H417R-Tg* mice at Zeitgeber Time 6 (ZT6).  $\beta$ -actin served as a loading control, and LMNB1 and caspase3 served as nuclear and cytoplasmic markers, respectively. (Right) Quantification of PER2 protein levels in nuclear and cytoplasmic fractions of hypothalamus (A) and liver (B) from *hPER3-WT-Tg* and *hPER3-P415A/H417R-Tg* mice ( $n = 10-11$ ). Expression levels were normalized to average levels in *hPER3-WT-Tg* mice. Results are expressed as mean  $\pm$  SEM. \* $P < 0.05$ , ANOVA with Tukey's post hoc multiple-comparison test for A and Student's  $t$  test for B. (C) HEK293T cells were transfected with the indicated plasmid vectors. At 24 h after transfection, the culture medium was replaced with measuring medium containing CHX (100  $\mu$ g/mL). Bioluminescence was measured at 10-min intervals. Bioluminescence at the time point 0 was set to 1. Half-lives of PER1-LUC and PER2-LUC were calculated by fitting the bioluminescence signals to exponential functions. Error bars show mean  $\pm$  SEM ( $n = 4$ ). \* $P < 0.05$ , \*\* $P < 0.01$ , Student's  $t$  test. (D) HEK293T cells were transfected with myc-PER2 and FLAG-PER3 expression vectors. At 40 h after transfection, the cells were treated with 100  $\mu$ g/mL CHX for 4 or 8 h. PER2 protein levels at time point 0 were set to 1, and relative PER2 protein levels were plotted. Error bars show mean  $\pm$  SEM ( $n = 3$ ). \* $P < 0.05$ , Student's  $t$  test.

stabilized PER1 and PER2, whereas PER3-P415A/H417R failed to do so (Fig. 4C). Similarly, using Western blot analysis, we found that PER3-WT, but not PER3-P415A/H417R, significantly increased PER2 protein stability (Fig. 4D). These results imply that PER3-WT acts to promote the stability of PER1/PER2, and that the PER3 variants abrogate this effect, leading to lower levels of PER1 and PER2. Taken together, these results suggest that the rare variants may act through PER1 and PER2 to alter clock regulation.

**PER3-P415A/H417R Mice Have Altered Sleep and Increased Depression-Like Behavior on the Tail Suspension Test.** Given that the human carriers of rare *PER3* variants show features of seasonal affective disorder, we tested whether transgenic mice can recapitulate this phenotype. When subjected to the tail suspension test, h*PER3-P415A/H417R-Tg* mice exhibited a significantly increased duration of immobility compared with WT littermates, indicating increased depression-like behavior (Fig. 5A). This finding cannot be related simply to overexpression of h*PER3* in mice, given that h*PER3-WT-Tg* transgenic mice are indistinguishable from WT mice (Fig. 5B). Moreover, the increased duration of immobility in h*PER3-P415A/H417R-Tg* mice was suppressed in a dose-dependent manner by treatment with the antidepressant imipramine (Fig. 5C), indicating that the depression-like behavior observed in these animals shares pharmacologic similarities with human depression. We did not detect any significant changes using the forced swim and sucrose intake tests, however.

Because patients with depression often experience disruptions in sleep (29), we also assessed sleep in our mouse models by evaluating electroencephalography (EEG) and electromyography (EMG) findings. Under LD cycles, h*PER3-P415A/H417R-Tg* mice spent significantly more time awake in the dark phase relative to WT mice, accompanied by significantly less nonrapid eye movement (NREM) sleep in the dark phase and less rapid eye movement (REM) sleep in the light phase (Fig. S4 A1–A3). In addition, compared with WT mice, h*PER3-P415A/H417R-Tg* mice had a significantly longer average length of wake episodes in the dark phase, along with a significantly shorter average length of REM sleep episodes in both the light and dark phases (Fig. S4 A4–A6). Despite the differences in sleep quantity, we found no significant change in NREM  $\delta$  power or REM  $\theta$  power, suggesting that sleep depth was not altered in the h*PER3-P415A/H417R-Tg* mice (Fig. S4 A7 and A8). These effects on sleep are exerted by the P415A/H417R variants, given that h*PER3-WT* expression in mice did not significantly alter sleep (Fig. S4B). Interestingly, sleep amount did not differ significantly between h*PER3-P415A/H417R-Tg* and WT mice under DD, implying that the h*PER3-P415A/H417R* allele alters sleep in a light-dependent manner.

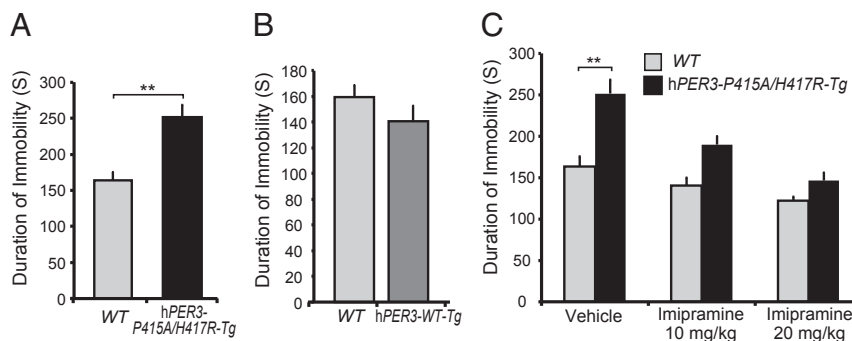
We next examined whether h*PER3-P415A/H417R* influences the regulation of sleep homeostasis by sleep-depriving mice for 6 h starting at the beginning of the light phase (i.e., when the animals normally sleep) and monitoring recovery sleep during the next 18 h (the subsequent 6 h of the light phase and 12 h of the dark phase). WT, h*PER3-WT-Tg*, and h*PER3-P415A/H417R-Tg* mice all exhibited comparable sleep rebound, with no significant alteration among the different genotypes (Fig. S4 C and D), suggesting that sleep homeostasis is not affected by the h*PER3-P415A/H417R* variants.

**Per3 Knockout Mice Display Depression-Like Behavior in a Short Photoperiod.** Because P415A/H417R variants destabilize PER3 protein, we tested whether the mood phenotype is associated with a reduction of PER3. Given that h*PER3-P415A/H417R-Tg* mice have two copies of endogenous m*Per3* and two or three copies of the h*PER3-P415A/H417R* transgene, transgenic mice overexpressing PER3 are not a good model for a mutation leading to reduced PER3. Thus, we tested *Per3*<sup>-/-</sup> mice for depression-like behavior. Under LD 12:12, *Per3*<sup>-/-</sup> mice displayed significantly increased duration of immobility in the tail suspension test and no significant change in the forced swim test (Fig. 6 A–C). When subjected to a shortened photoperiod (LD 4:20), *Per3*<sup>-/-</sup> mice demonstrated an even greater difference in the duration of immobility in the tail suspension test (Fig. 6A). In addition, *Per3*<sup>-/-</sup> mice showed a significantly reduced latency to immobilization accompanied by increased duration of immobility in the forced swim test under LD 4:20, indicative of increased depression-like behavior (Fig. 6 B and C). We were able to rescue both of these phenotypes with imipramine treatment (Fig. 6 D and E).

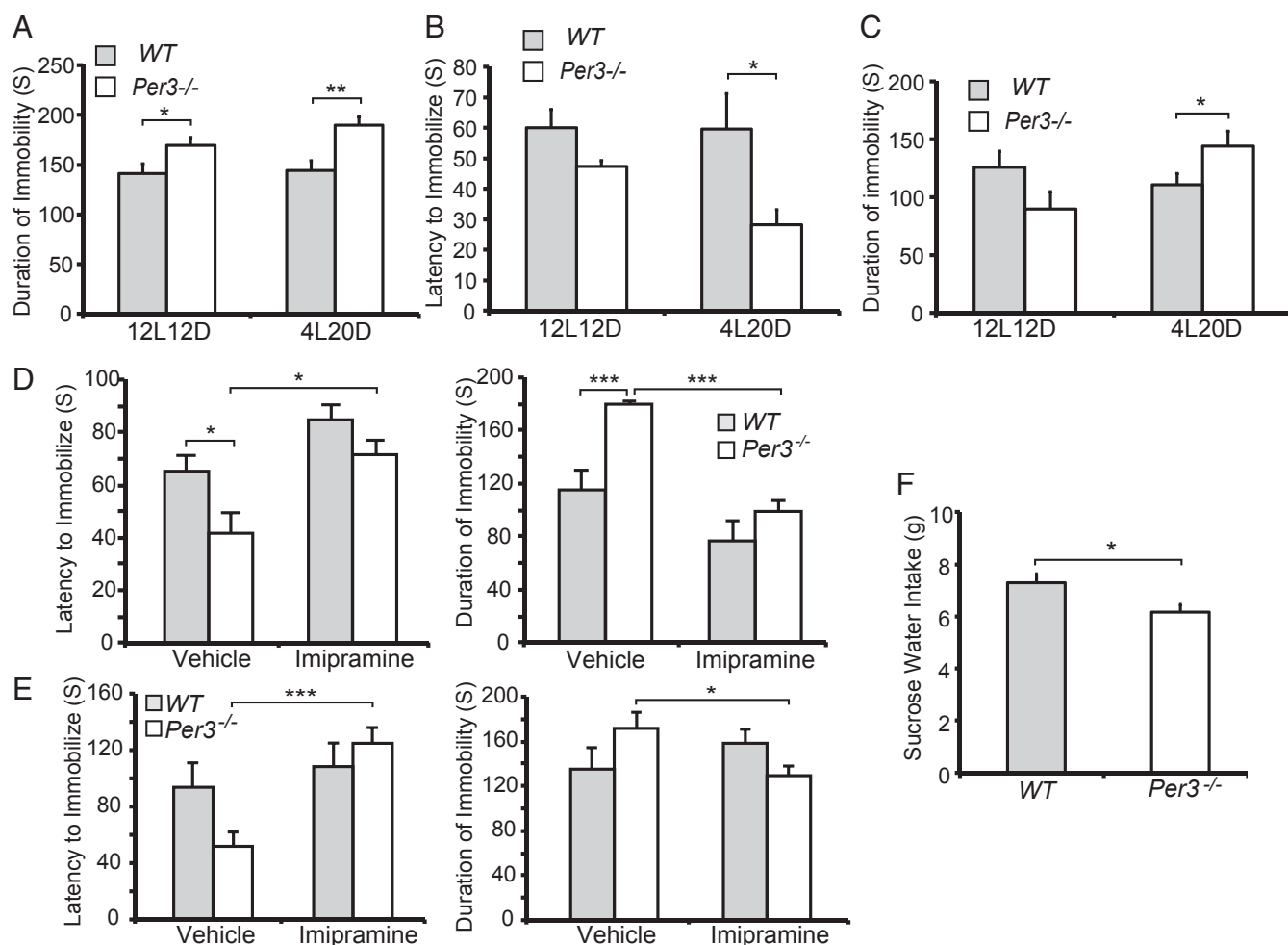
We also analyzed the hedonic value of sucrose, and found that *Per3*<sup>-/-</sup> mice ingested significantly less sucrose solution (Fig. 6F), further supporting increased depression-like behavior in these animals. Taken together, these behavioral alterations demonstrate a fascinating association of PER3 genotypes with mood phenotypes, particularly in short photoperiods that mimic the winter months. These phenotypes are reminiscent of the mood and seasonality traits observed in the human carriers of the rare *PER3* variants, suggesting that *PER3-P415A/H417R* may play a role in the seasonal affective behavior in these individuals.

## Discussion

There have been numerous reports of genetic associations between polymorphisms in clock genes and psychiatric disorders (including major depressive disorder and seasonal affective disorder) (6–14), but neither direct causal mutations nor molecular pathways have been identified. We previously reported that in a FASP kindred with a mutation in casein kinase 1 $\delta$ , four of the five affected individuals exhibited higher depression scores (17);



**Fig. 5.** h*PER3-P415A/H417R-Tg* mice show depression-like behavior on the tail suspension test. (A and B) Duration of immobility in the tail suspension test for WT vs. h*PER3-P415A/H417R-Tg* mice (A) and for WT vs. h*PER3-WT-Tg* mice (B). (C) Quantification of the effects of imipramine on immobility of WT vs. h*PER3-P415A/H417R-Tg* mice in the tail suspension test. Error bars show mean  $\pm$  SEM ( $n = 4-22$ ).  $**P < 0.01$ , Student's  $t$  test.



**Fig. 6.** *PER3*<sup>-/-</sup> mice demonstrate depression-like behavior in short photoperiods. (A) Duration of immobility of WT vs. *Per3*<sup>-/-</sup> mice in the tail suspension test under LD 12:12 and LD 4:20. (B and C) Latency to immobilization (B) and duration of immobility (C) of WT vs. *Per3*<sup>-/-</sup> mice in the forced swim test under LD 12:12 and LD 4:20. (D) Treatment with imipramine (20 mg/kg i.p.) rescues the tail suspension phenotype in *Per3*<sup>-/-</sup> mice under LD 4:20. Error bars show mean  $\pm$  SEM ( $n = 6$  per group). (E) Treatment with imipramine (20 mg/kg i.p.) rescues the forced swim phenotype in *Per3*<sup>-/-</sup> mice under LD 4:20. Error bars represent mean  $\pm$  SEM ( $n = 6$  each genotype). (F) Amount of sucrose water intake in WT and *Per3*<sup>-/-</sup> mice under LD 4:20. Error bars represent mean  $\pm$  SEM ( $n = 4-22$ ). \* $P < 0.05$ , \*\* $P < 0.01$ , \*\*\* $P < 0.005$ , Student's  $t$  test.

however, the mutant mice carrying the casein kinase 1 $\delta$  mutation were not phenotyped for depression-like behavior. Here we describe rare *hPER3* variants, P415A and H417R, that cause FASP and provide data supporting a possible role of these variants in seasonal affective disorder.

Given the small size of the human family and limitations of testing “depression” in rodent models, we must be careful in interpreting a causal role for *PER3* variants in regulation of affect. Nonetheless, it is striking that this *PER3* allele cosegregates with seasonal affective disorder in this small family, and that mouse models mimicking human mutations (*hPER3-P415A/H417R-Tg* and *Per3*<sup>-/-</sup> mice) exhibit measures of increased depression-like behavior. This phenotype was exacerbated by subjecting animals to a short photoperiod. Thus, this report provides evidence supporting the assertion that circadian rhythm and mood regulation share common, or closely related, pathways.

We found that the period for *hPER3-P415A/H417R-Tg* mice was lengthened under LL, although their behavioral rhythms were not significantly altered in LD 12:12 and DD. Light, when administered at different times of the day, can lead to phase advance or delay of sleep-wake rhythms. It is believed that when subjected to LL, an animal with a greater phase delay zone and a smaller phase advance zone will demonstrate in period lengthening,

and vice versa (30). Our results indicate that light induces a larger phase delay and/or smaller phase advance in *hPER3-P415A/H417R-Tg* vs. *hPER3-WT-Tg* mice, and that the variants lead to altered entrainment in response to light. Altered entrainment is further supported by the observation that *hPER3-P415A/H417R-Tg* mice display a large phase delay under LD 4:20.

Based on the morning/evening oscillator model, the morning oscillator is accelerated by light, whereas the evening oscillator is decelerated by light (30). Mice lacking *PER3* exhibit a shorter period than WT mice in LL (27), suggesting that *PER3* functions in the evening oscillator. The *hPER3-P415A/H417R-Tg* mice exhibited a lengthened period in LL, supporting enhanced function in the evening oscillator. One important function of morning and evening oscillators is to adapt to seasonal changes in day length (30). It is possible that *PER3-P415A/H417R* affects the evening oscillators, resulting in maladaptation of activity rhythms to short photoperiods during the winter months.

Unlike *Per1*- and *Per2*-deficient mice, *Per3*-deficient mice exhibit relatively small changes in circadian period length in DD (31, 32); therefore, *Per3* has been considered dispensable for the circadian clock. Polymorphisms for human *PER3* have been repeatedly linked to diurnal preference by association studies, however (33–36). Here we find that *PER3-WT* could stabilize



PER1/PER2, and that PER3-P415A/H417R lost this ability. This provides a possible means through which PER3-P415A/H417R can exert an effect on the molecular clock through its loss of stabilizing function on PER1/PER2.

The hPER3-P415A/H417R-Tg mice showed increased depression-like behavior only in the tail suspension test, whereas *Per3*<sup>-/-</sup> animals displayed depression-like changes in multiple behavioral tests. Given that the P415A/H417R variants destabilize PER3 protein, it is possible that the PER3-P415A/H417R contributes to a mood phenotype in humans owing to reduced PER3 levels. Consistent with this idea, the *Per3* null animals had a stronger phenotype but exhibited a loss of both alleles. We cannot rule out the possibility that PER3-P415A/H417R variants exert a weak dominant-negative effect. These mouse behavioral phenotypes become more evident in short photoperiods, reflecting an effect of day length on mood-like behaviors that recapitulates the mood and seasonality traits in human subjects. These findings suggest that PER3 modulates mood to accommodate for the short day length in winter. More work is needed to substantiate this finding and, if verified, to characterize the molecular pathways leading to this phenotype.

hPER3-P415A/H417R-Tg mice also exhibited reduced baseline NREM sleep in the dark phase and REM sleep in the light phase. The duration of REM episodes was decreased in both the light and the dark phases. Overall recovery sleep following sleep deprivation was not altered in these animals, indicating that sleep homeostasis is not affected by these variants; however, the cumulative REM loss from sleep deprivation tended to be much less for hPER3-P415A/H417R-Tg mice than for control mice. These results might be relevant to the finding of enhanced arousal in depressed patients and the idea that depression symptoms can be alleviated by increasing sleep propensity via sleep deprivation (37). This increased wakefulness also may contribute to altered signaling of arousal-dependent factors to the clock. Moreover, the sleep-reducing effects of mutant PER3 are light dependent (observed only in LD and not in DD). Consistent with our findings, it has been suggested that a polymorphism in *PER3* is involved in modulating the alerting effects of light and the influence of light on sleep in human subjects (38, 39).

In summary, our results suggest that PER3 serves as a node linking the regulatory processes of circadian rhythms with those of mood. PER3 may participate in modulating these processes to adapt to the short photoperiods in winter. Our animal models provide unique opportunities to further dissect the mechanisms underlying the circadian clock and mood, and to understand the pathology that contributes to affective disorders accompanied by altered sleep/wake rhythms. New insights into PER3 function could have implications for the development of treatment for affective disorders.

## Materials and Methods

Additional information on the materials and methods used in this study is provided in *SI Materials and Methods*.

**Patient Diagnosis.** Subjects signed a consent form approved by the Institutional Review Boards at the University of Utah and the University of California, San Francisco. Self-reported habitual sleep-wake schedules were obtained from telephone interviews and/or questionnaire reports of vacation or weekend sleep schedules. Midsleep time on free days was calculated as the average of the habitual initial sleep onset and final awakening times during nonwork days. More details are provided in *SI Materials and Methods*.

**Identification of Rare Variants in PER3.** We collected human families that exhibit the trait of habitual early spontaneous awakening segregated in an autosomal dominant pattern. To identify the mutations responsible for this phenotype, we used a candidate gene approach to screen at least one DNA sample from each family. We sequenced *CLOCK*, *BMAL1*, *PER1-3*, *CRY1-2*, *DEC1-2*, *CK1 $\delta$ / $\epsilon$* , and other known clock genes. PER3-P415A/H417R variants were found only in this family (out of 60 families). No other circadian can-

didate gene mutations were found in this FASP family. Sequencing included at least 100 bases flanking exons of all candidate genes.

**Plasmid Construction.** Detailed information on plasmid construction is provided in *SI Materials and Methods*.

**Generation of Transgenic Mice.** hPER3-WT-Tg (carrying a WT human *PER3* gene) and hPER3-P415A/H417R-Tg (carrying a human *PER3* gene with variants) transgenic mice were generated as described previously (17). All mouse work was performed in accordance with the guidelines of Institutional Animal Care and Use Committee at University of California, San Francisco. More details are provided in *SI Materials and Methods*.

**Mouse Wheel-Running Activity Monitoring and Analyses.** This experiment was performed using male mice (aged 2–6 mo) of the following genotypes on a C57BL6 background: WT, hPER3-WT-Tg, hPER3-P415A/H417R-Tg, and *Per3*<sup>-/-</sup> (32). Mouse housing, handling, and wheel-running activity monitoring were performed as described previously (17). The activity onset and offset times were calculated using standard parameters in the ClockLab software. The default template was 6 h of inactivity followed by 6 h of activity for onsets (and vice versa for offsets). To calculate the time of onset or offset of wheel-running activity in LD 4:20, the largest 1-h increase or decrease in activity for each mouse was determined. The time designation refers to the end point of the maximal activity decrease or increase, as averaged among individual mice in each genotype. “Phase delay” is the hours of delayed-onset Zeitgeber time (ZT), calculated by comparing mutant transgenic mice with control mice. All of the mice used in this work were on a C57BL6 background except the mice shown in Fig. 2 E and F, Bottom, which were on a C57/SJL hybrid background. More information is available in *SI Materials and Methods*.

**qRT-PCR of Mouse Liver.** Total RNA was isolated using the miRNeasy Mini Kit (Qiagen) from liver samples of transgenic animals at ZT12. qRT-PCR was performed as follows. After generation of cDNA by SuperScript III (Life Technologies), duplex TaqMan qPCR assays were performed in triplicate with probes specific for genes of interest and an endogenous control, *Gapdh* (Life Technologies; 4308313). Data were calculated using the standard curve method. Expression levels of genes of interest were then normalized to levels of *Gapdh*. PER3 TaqMan assays were purchased from Integrated DNA Technology.

**Luciferase Assay.** HEK293T cells were transfected with a *Per2::luc* reporter and other expression constructs (100 ng per well of a 24-well plate, unless noted otherwise). For *Per2* expression, 200 ng of the construct was used. For PER3 titration, 200, 50, or 12.5 ng of the construct was used for transfection. A constitutively expressed *Renilla luciferase* construct served as a control. Assays were performed at 24 h posttransfection using the Promega Dual-Luciferase Reporter Assay System according to the manufacturer’s instructions. Results are expressed as mean  $\pm$  SEM. All experiments were performed at least twice, and all data presented are the average of three technical replicates.

**Protein Extraction and Western Blot Analysis.** Nuclear and cytoplasmic protein extraction was performed using the Active Motif Nuclear Extract Kit. For whole-cell extracts, HEK293 cells were homogenized in RIPA buffer [25 mM Tris-HCl pH 7.6, 150 mM NaCl, 1% Nonidet P-40, 1% sodium deoxycholate, 0.1% SDS, protease inhibitor mixture (Roche), and phosphatase inhibitor mixture (Active Motif)]. After centrifugation, supernatants were boiled for 5 min in SDS sample buffer and then separated by SDS/PAGE. After transfer to nitrocellulose membranes and blocking with Odyssey blocking buffer (LI-COR Biosciences), proteins were detected with appropriate antibodies (*SI Materials and Methods*). Nuclear PER3/PER1/PER2 was normalized to LMNB1, and cytoplasmic PER3/PER1/PER2 was normalized to caspase 3, GAPDH, or  $\beta$ -actin. For whole-cell extracts, PER3/PER2 was normalized to GAPDH or  $\beta$ -actin. The values of PER3-WT were set to 1. Further details are provided in *SI Materials and Methods*.

**Transient Transfection and Protein Stability Assays.** HEK293T cells were plated in 12-well plates and transfected with Lipofectamine 3000 transfection reagent (Life Technologies). The following DNA constructs were used for transfections: pCMV10-FLAG-hPER3-WT, pCMV10-FLAG-hPER3-P415A/H417R, and pCS2-myc-hPER2 (40). Approximately 40 h later, CHX (100  $\mu$ g/mL; Santa Cruz Biotechnology) was added, and cells were harvested at 4 or 8 h after CHX treatment.

**Bioluminescence Degradation Assay.** hPER1-LUC, hPER2-LUC and hPER3-LUC fusion protein-expressing vectors were created by inserting cDNA coding the *Per-Luc* gene between EcoRI and BamHI sites in the p3XFLAG-CMV-10

vector. HEK293T cells were transfected with PER-LUC vectors and cultured for 24 h. The cultured medium was exchanged with the recording medium [phenol-red free DMEM (Sigma Aldrich) supplemented with 10% (vol/vol) FBS, 3.5 mg/mL glucose, 25 U/mL penicillin, 25 µg/mL streptomycin, 0.05 mM luciferin, and 10 mM Hepes-NaOH; pH 7.0] containing 100 µg/mL CHX (Santa Cruz Biotechnology). Luciferase activity of PER-LUC was recorded at 10-min intervals at 37 °C with a LumiCycle luminometer (Actimetrics). The luminescence signals were fitted to exponential functions to quantify the half-life of PER-LUC.

**Tail Suspension Test, Forced Swim Test, and Sucrose Intake Test.** These tests are described in *SI Materials and Methods*.

**Surgery and EEG/EMG Monitoring and Analysis.** Surgery, EEG/EMG monitoring, and EEG data acquisition were performed in the indicated number of 6- to 7-mo-old mice in the Stanford Sleep and Circadian Neurobiology Laboratory

as described previously (41). Wakefulness was determined by low-amplitude, mixed-frequency (>4 Hz) EEG with continuous large fluctuation in EMG. Slow-wave or NREM sleep was determined by high-amplitude, low-frequency (0.25–4 Hz) EEG with no fluctuation in EMG, and REM sleep was determined by low-amplitude, high-frequency EEG (similar to the wake stage, but with rhythmic  $\alpha$  waves at 8–9 Hz) with no fluctuation in EMG. For power spectral analysis, NREM  $\delta$  and REM  $\theta$  EEG power were analyzed with fast Fourier transform for band frequencies between 0.25 and 4 Hz and between 4 and 9 Hz, respectively.

**ACKNOWLEDGMENTS.** We thank Brian Curtis for help with recruiting, coordinating, and performing structured participant interviews and entering data, and Dr. L. Czajkowski for help in characterizing the affective phenotype. This work is supported by National Institutes of Health Grants HL059596, GM079180, and NS072360 and by a generous gift of the William K. Bowes Foundation (to Y.-H.F. and L.J.P.).

- McClung CA (2011) Circadian rhythms and mood regulation: Insights from pre-clinical models. *Eur Neuropsychopharmacol* 21(Suppl 4):S683–S693.
- Kaminski-Hartenthaler A, et al. (2015) Melatonin and agomelatine for preventing seasonal affective disorder. *Cochrane Database Syst Rev* 11:CD011271.
- Scott AJ, Monk TH, Brink LL (1997) Shiftwork as a risk factor for depression: A pilot study. *Int J Occup Environ Health* 3(Supplement 2):S2–S9.
- Emens J, Lewy A, Kinzie JM, Arntz D, Rough J (2009) Circadian misalignment in major depressive disorder. *Psychiatry Res* 168(3):259–261.
- Hasler BP, Buysse DJ, Kupfer DJ, Germain A (2010) Phase relationships between core body temperature, melatonin, and sleep are associated with depression severity: further evidence for circadian misalignment in non-seasonal depression. *Psychiatry Res* 178(1):205–207.
- Johansson C, et al. (2003) Circadian clock-related polymorphisms in seasonal affective disorder and their relevance to diurnal preference. *Neuropsychopharmacology* 28(4):734–739.
- Partonen T, et al. (2007) Three circadian clock genes, *Per2*, *Arntl*, and *Npas2*, contribute to winter depression. *Ann Med* 39(3):229–238.
- McCarthy MJ, Nievergelt CM, Kelsey JR, Welsh DK (2012) A survey of genomic studies supports association of circadian clock genes with bipolar disorder spectrum illnesses and lithium response. *PLoS One* 7(2):e32091.
- Kim H-I, et al. (2015) Association of *CLOCK*, *ARNTL*, and *NPAS2* gene polymorphisms and seasonal variations in mood and behavior. *Chronobiol Int* 32(6):785–791.
- McClung CA (2007) Circadian genes, rhythms, and the biology of mood disorders. *Pharmacol Ther* 114(2):222–232.
- Hek K, et al. (2013) A genome-wide association study of depressive symptoms. *Biol Psychiatry* 73(7):667–678.
- Byrne EM, et al. (2014) Testing the role of circadian genes in conferring risk for psychiatric disorders. *Am J Med Genet B Neuropsychiatr Genet* 165B(3):254–260.
- Desan PH, et al. (2000) Genetic polymorphism at the *CLOCK* gene locus and major depression. *Am J Med Genet* 96(3):418–421.
- Kishi T, et al. (2011) The *CLOCK* gene and mood disorders: A case-control study and meta-analysis. *Chronobiol Int* 28(9):825–833.
- Jones CR, et al. (1999) Familial advanced sleep-phase syndrome: A short-period circadian rhythm variant in humans. *Nat Med* 5(9):1062–1065.
- Toh KL, et al. (2001) An hPer2 phosphorylation site mutation in familial advanced sleep phase syndrome. *Science* 291(5506):1040–1043.
- Xu Y, et al. (2005) Functional consequences of a CK1delta mutation causing familial advanced sleep phase syndrome. *Nature* 434(7033):640–644.
- Brennan KC, et al. (2013) Casein kinase 1 $\delta$  mutations in familial migraine and advanced sleep phase. *Sci Transl Med* 5(183):183ra56.
- Roenneberg T, et al. (2004) A marker for the end of adolescence. *Curr Biol* 14(24):R1038–R1039.
- Horne JA, Ostberg O (1976) A self-assessment questionnaire to determine morningness-eveningness in human circadian rhythms. *Int J Chronobiol* 4(2):97–110.
- Choi SW, Schalet B, Cook KF, Cella D (2014) Establishing a common metric for depressive symptoms: Linking the BDI-II, CES-D, and PHQ-9 to PROMIS depression. *Psychol Assess* 26(2):513–527.
- Beck AT (1978) *Beck Depression Inventory* (The Psychological Corporation, San Antonio, TX).
- Young MA, Blodgett C, Reardon A (2003) Measuring seasonality: Psychometric properties of the Seasonal Pattern Assessment Questionnaire and the Inventory for Seasonal Variation. *Psychiatry Res* 117(1):75–83.
- Rosenthal NE, Genhart MJ, Sack DA, Skerwer RG, Wehr TA (1984) Seasonal affective disorder and its relevance for the understanding and treatment of bulimia. *The Psychobiology of Bulimia*, eds Hudson JI, Pope HG (American Psychiatric Press, Washington, DC), pp 205–228.
- Andrade L, et al. (2003) The epidemiology of major depressive episodes: Results from the International Consortium of Psychiatric Epidemiology (ICPE) Surveys. *Int J Methods Psychiatr Res* 12(1):3–21.
- Karatsoreos IN (2014) Links between circadian rhythms and psychiatric disease. *Front Behav Neurosci* 8:162.
- van der Veen DR, Archer SN (2010) Light-dependent behavioral phenotypes in PER3-deficient mice. *J Biol Rhythms* 25(1):3–8.
- Yagita K, et al. (2000) Dimerization and nuclear entry of mPER proteins in mammalian cells. *Genes Dev* 14(11):1353–1363.
- Steiger A, Dresler M, Kluge M, Schüssler P (2013) Pathology of sleep, hormones and depression. *Pharmacopsychiatry* 46(Suppl 1):S30–S35.
- Pittendrigh CS, Daan S (1976) A functional analysis of circadian pacemakers in nocturnal rodents. *J Comp Physiol* 106:223–252.
- Bae K, et al. (2001) Differential functions of mPer1, mPer2, and mPer3 in the SCN circadian clock. *Neuron* 30(2):525–536.
- Shearman LP, Jin X, Lee C, Reppert SM, Weaver DR (2000) Targeted disruption of the mPer3 gene: Subtle effects on circadian clock function. *Mol Cell Biol* 20(17):6269–6275.
- Archer SN, et al. (2003) A length polymorphism in the circadian clock gene *Per3* is linked to delayed sleep phase syndrome and extreme diurnal preference. *Sleep* 26(4):413–415.
- Ojeda DA, et al. (2013) A novel association of two non-synonymous polymorphisms in *PER2* and *PER3* genes with specific diurnal preference subscales. *Neurosci Lett* 553:52–56.
- Hida A, et al. (2014) Screening of clock gene polymorphisms demonstrates association of a *PER3* polymorphism with morningness-eveningness preference and circadian rhythm sleep disorder. *Sci Rep* 4:6309.
- Parsons MJ, et al. (2014) Polymorphisms in the circadian expressed genes *PER3* and *ARNTL2* are associated with diurnal preference and *Gnβ3* with sleep measures. *J Sleep Res* 23(5):595–604.
- Hegerl U, Hensch T (2014) The vigilance regulation model of affective disorders and ADHD. *Neurosci Biobehav Rev* 44:45–57.
- Chellappa SL, et al. (2012) Human melatonin and alerting response to blue-enriched light depend on a polymorphism in the clock gene *PER3*. *J Clin Endocrinol Metab* 97(3):E433–E437.
- Chellappa SL, et al. (2014) Light modulation of human sleep depends on a polymorphism in the clock gene *Period3*. *Behav Brain Res* 271:23–29.
- Xu Y, et al. (2007) Modeling of a human circadian mutation yields insights into clock regulation by *PER2*. *Cell* 128(1):59–70.
- He Y, et al. (2009) The transcriptional repressor *DEC2* regulates sleep length in mammals. *Science* 325(5942):866–870.
- Emery P, So WV, Kaneko M, Hall JC, Rosbash M (1998) *CRY*, a *Drosophila* clock and light-regulated cryptochrome, is a major contributor to circadian rhythm resetting and photosensitivity. *Cell* 95(5):669–679.
- Emery P, et al. (2000) *Drosophila* *CRY* is a deep brain circadian photoreceptor. *Neuron* 26(2):493–504.
- Heintz N (2001) BAC to the future: The use of bac transgenic mice for neuroscience research. *Nat Rev Neurosci* 2(12):861–870.
- Castagné V, Moser P, Roux S, Porsolt RD (2010) Rodent models of depression: forced swim and tail suspension behavioral despair tests in rats and mice. *Curr Protoc Pharmacol* 49(5.8):5.8.1–5.8.14.