

# UC Davis

## UC Davis Previously Published Works

### Title

The Type I interferon antiviral gene program is impaired by lockdown and preserved by caregiving

### Permalink

<https://escholarship.org/uc/item/9w04d2z6>

### Journal

Proceedings of the National Academy of Sciences of the United States of America, 118(29)

### ISSN

0027-8424

### Authors

Cole, Steven W  
Cacioppo, John T  
Cacioppo, Stephanie  
[et al.](#)

### Publication Date

2021-07-20

### DOI

10.1073/pnas.2105803118

### Copyright Information

This work is made available under the terms of a Creative Commons Attribution License, available at <https://creativecommons.org/licenses/by/4.0/>

Peer reviewed



# The Type I interferon antiviral gene program is impaired by lockdown and preserved by caregiving

Steven W. Cole<sup>a,b,c,d,1</sup>, John T. Cacioppo<sup>e,f</sup>, Stephanie Cacioppo<sup>e,f</sup>, Kyle Bone<sup>g</sup>, Laura A. Del Rosso<sup>g</sup>, Abigail Spinner<sup>g</sup>, Jesusa M. G. Arevalo<sup>a,b</sup>, Thomas P. Dizon<sup>a</sup>, and John P. Capitanio<sup>g,h</sup>

<sup>a</sup>Department of Psychiatry and Biobehavioral Sciences, David Geffen School of Medicine, University of California, Los Angeles, CA 90095; <sup>b</sup>Division of Hematology-Oncology, Department of Medicine, David Geffen School of Medicine, University of California, Los Angeles, CA 90095; <sup>c</sup>Norman Cousins Center, David Geffen School of Medicine, University of California, Los Angeles, CA 90095; <sup>d</sup>Jonsson Comprehensive Cancer Center, David Geffen School of Medicine, University of California, Los Angeles, CA 90095; <sup>e</sup>Center for Cognitive and Social Neuroscience, University of Chicago, Chicago, IL 60637; <sup>f</sup>Department of Psychiatry and Behavioral Neuroscience, University of Chicago, Chicago, IL 60637; <sup>g</sup>California National Primate Research Center, University of California, Davis, CA 95616; and <sup>h</sup>Department of Psychology, University of California, Davis, CA 95616

Edited by Douglas S. Massey, Princeton University, Princeton, NJ, and approved June 3, 2021 (received for review March 25, 2021)

**Previous research has linked perceived social isolation (loneliness) to reduced antiviral immunity, but the immunologic effects of the objective social isolation imposed by pandemic “shelter in place” (SIP) policies is unknown. We assessed the immunologic impact of SIP by relocating 21 adult male rhesus macaques from 2,000-m<sup>2</sup> field cage communities of 70 to 132 other macaques to 2 wk of individual housing in indoor shelters. SIP was associated with 30% to 50% reductions in all circulating immune cell populations (lymphocytes, monocytes, and granulocytes), down-regulation of Type I interferon (IFN) antiviral gene expression, and a relative up-regulation of CD16<sup>+</sup> classical monocytes. These effects emerged within the first 48 h of SIP, persisted for at least 2 wk, and abated within 4 wk of return to social housing. A subsequent round of SIP in the presence of a novel juvenile macaque showed comparable reductions in circulating immune cell populations but reversal of Type I IFN reductions and classical monocyte increases observed during individual SIP. Analyses of lymph node tissues showed parallel up-regulation of Type I IFN genes and enhanced control of viral gene expression during juvenile-partnered SIP compared to isolated SIP. These results identify a significant adverse effect of SIP social isolation on antiviral immune regulation in both circulating immune cells and lymphoid tissues, and they suggest a potential behavioral strategy for ameliorating gene regulatory impacts (but not immune cell declines) by promoting prosocial engagement during SIP.**

social genomics | infectious disease | public health | social behavior | social epidemiology

The COVID-19 pandemic has highlighted the complex role of sociality in human health, as social contact constitutes an essential resource for human well-being (1, 2), optimal physiological function (3, 4), and longevity (5, 6) but also a medium for the spread of infectious disease (7, 8). Efforts to reduce the spread of SARS-CoV-2 by social distancing are associated with reduced COVID-19 disease rates per unit time (9–14) but also incur substantial psychological, social, cultural, medical, and economic costs (14–18). Most cost–benefit analyses of social distancing policies overlook the fact that social contact is also an essential resource for optimal immune function (19–21). As such, extreme social distancing measures such as extended “stay at home” or “shelter in place” (SIP) orders may paradoxically increase vulnerability to viral infection (conditional on viral exposure) even as they reduce the risk of viral exposure. Social influences on host resistance to viral infections have been documented in experimental viral challenge studies in humans (19, 22, 23) and nonhuman primates (24, 25). However, the relevance of those studies to current (and historically novel) (26) extended SIP policies is complicated by the fact that earlier research assessed host resistance effects of perceived social isolation (“loneliness”) and low social network density (“social ties”) rather than objective social isolation (i.e., absence of others). Previous analyses also failed to capture the effects of some incidental nonsocial SIP effects such as

transition from free mobility to involuntary confinement and reduced exposure to outdoor and natural environments. Research has begun to map the neural and immunoregulatory pathways through which loneliness and low social ties can influence immune function (24, 27–30), including a sympathetic nervous system (SNS)-mediated Conserved Transcriptional Response to Adversity (CTRA) involving up-regulated transcription of proinflammatory genes and down-regulated transcription of innate antiviral genes (e.g., Type I interferons; IFNs), resulting in part from increased output of classical CD16<sup>+</sup> monocytes from bone marrow and splenic hematopoiesis (31–35). By contrast, little is known about the neural or immunoregulatory impact of the involuntary social isolation and confinement characteristic of extended SIP.

Given the documented adverse effects of extended SIP policies during the COVID-19 pandemic (14–18), there is a great need to identify strategies for mitigating their unintended harms while maintaining their intended epidemiologic benefits (9, 10). Previous experimental studies of CTRA gene regulation have shown that prosocial engagement (36), caregiving (37), and generativity (38) can reduce expression of proinflammatory genes and increase expression of Type I IFN genes (i.e., reduce the CTRA profile). These prosocial modes of behavior are hypothesized to activate central nervous system (CNS) reward circuits that subsequently inhibit the CNS threat response systems that control peripheral SNS activity and CTRA gene expression (39–42). This hypothesis

## Significance

**“Shelter in place” (SIP) orders have been deployed to slow the spread of SARS-CoV-2, but they induce social isolation that may paradoxically weaken antiviral immunity. We examined the impact of 2-wk SIP on immune cell population dynamics and gene regulation in 21 adult rhesus macaques, finding 30 to 50% declines in circulating immune cells, decreases in antiviral gene expression, and increased inflammatory cells in blood and inflammatory gene expression in lymph nodes. Declines in antiviral gene expression (but not circulating immune cells) were blocked by the presence of a novel juvenile partner during SIP, suggesting a potential strategy for maintaining antiviral immunity during SIP by enhancing prosocial engagement.**

Author contributions: S.W.C., J.T.C., and J.P.C. designed research; S.W.C., J.T.C., S.C., K.B., L.A.D.R., A.S., J.M.G.A., T.P.D., and J.P.C. performed research; S.W.C. and J.P.C. analyzed data; and S.W.C., S.C., K.B., L.A.D.R., A.S., J.M.G.A., T.P.D., and J.P.C. wrote the paper.

The authors declare no competing interest.

This article is a PNAS Direct Submission.

This open access article is distributed under [Creative Commons Attribution License 4.0 \(CC BY\)](https://creativecommons.org/licenses/by/4.0/).

<sup>1</sup>To whom correspondence may be addressed. Email: [steve.cole@ucla.edu](mailto:steve.cole@ucla.edu).

This article contains supporting information online at <https://www.pnas.org/lookup/suppl/doi:10.1073/pnas.2105803118/-DCSupplemental>.

Published July 16, 2021.

raises the possibility that adverse immunological effects of extended SIP might potentially be reduced by promoting prosocial engagement during SIP.

## Results

To assess the immunologic impact of SIP, we relocated 21 adult male rhesus macaques from 2,000-m<sup>2</sup> (half-acre) field cages containing 70 to 132 other macaques to 2 wk of individual housing in 2.0 × 0.8 × 0.7 m indoor shelters and examined changes in circulating immune cell (white blood cell; WBC) subpopulations, Type I IFN innate antiviral gene regulation, and viral gene transcription. Individual shelters met all Institutional Animal Use and Care Committee, US Department of Agriculture, and US NIH guidelines for humane macaque husbandry, including the presence of enrichment objects, daily foraging enrichment, and auditory and olfactory access to conspecifics in the same room.

As shown in Fig. 1, total immune cell (WBC) counts declined by an average 32% within the first 48 h of SIP (Fig. 1A;  $F(3, 20) = 37.13$ ,  $P < 0.0001$ ), whereas red blood cell counts, hematocrit, hemoglobin, platelet counts, and fibrinogen concentration remained stable (Fig. 1B). All major WBC subpopulations declined by 35 to 49% (Fig. 1A), including neutrophils ( $F(3, 20) = 6.34$ ,  $P = 0.0034$ ), lymphocytes ( $F(3, 20) = 14.29$ ,  $P < 0.0001$ ), and monocytes ( $F(3, 20) = 5.88$ ,  $P = 0.0048$ ). WBC reductions (leukopenia) persisted throughout the 2-wk SIP period with minimal abatement. Within the declining monocyte subpopulation, however, we observed multiple CTRA-characteristic immunoregulatory alterations including relative up-regulation of CD16<sup>-</sup> classical monocytes (Fig. 1C;  $F(3, 20) = 5.24$ ,  $P = 0.0079$ ) and up-regulation of the CTRA gene expression profile (per-cell ratio of inflammatory versus Type I IFN response gene messenger RNA (mRNA):  $F(3, 3,546) = 3.01$ ,  $P = 0.0291$ ), the latter of which stemmed primarily from down-regulated expression of Type I IFN response genes (Fig. 1D;  $F(3, 1,969) = 6.92$ ,  $P < 0.0001$ ). Consistent with these alterations, promoter sequence-based bioinformatics analysis of the 1,804 gene transcripts

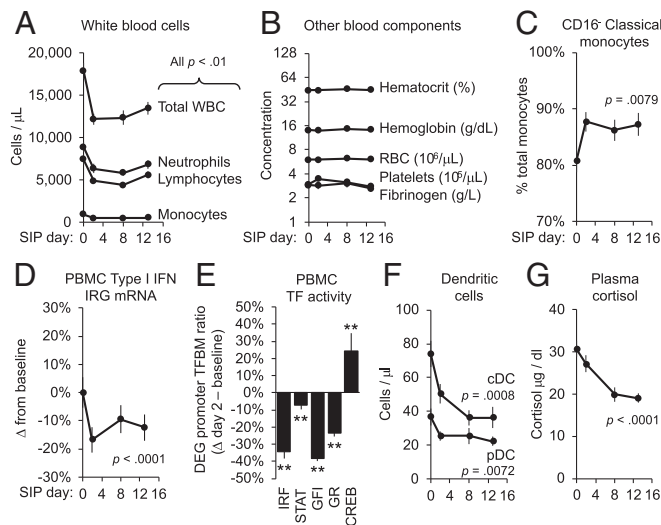
that showed consistent change in average expression within the first 48 h of SIP (genes listed in Dataset S1) indicated reduced activity of transcription control pathways mediating expression of Type I IFNs (Fig. 1E; Interferon Response Factor/IRF: mean log<sub>2</sub> ratio of transcription factor-binding motifs (TFBMs) in promoters of up- versus down-regulated genes:  $-0.607 \pm 0.094$ ,  $z = -6.45$ ,  $P < 0.0001$ ), IFN receptor signaling (STAT:  $-0.110 \pm 0.033$ ,  $z = -3.34$ ,  $P = 0.0010$ ), and development of the plasmacytoid dendritic cells (pDC) that constitute the primary source of Type I IFNs in circulating blood (43) (GFI:  $-0.700 \pm 0.029$ ,  $z = -23.98$ ,  $P < 0.0001$ ). Flow cytometry confirmed an average 19% reduction in circulating pDCs (Fig. 1F;  $F(3, 20) = 5.35$ ,  $P = 0.0072$ ) and 35% reduction in classical dendritic cells (cDCs;  $F(3, 20) = 8.43$ ,  $P = 0.0008$ ).

Stress-induced glucocorticoid release can reduce circulating WBC counts by shunting leukocytes out of blood and into other tissue compartments (44–47). Such effects do not appear to mediate the effects of SIP, however, because plasma cortisol concentrations did not increase during SIP but rather decreased progressively over 2 wk (Fig. 1G;  $F(3, 20) = 40.55$ ,  $P < 0.0001$ ). Stress can also alter circulating WBC numbers and CTRA gene expression via SNS catecholamine activation of  $\beta$ -adrenergic receptors that alter cell trafficking (48–50) and transcriptional regulation (31–35). Consistent with SNS activation, promoter-based bioinformatics analyses indicated increased activity of the CREB family of transcription factors that mediate  $\beta$ -adrenergic signaling (Fig. 1E; CREB:  $0.316 \pm 0.113$ ,  $z = 2.80$ ,  $P = 0.0056$ ). Consistent with reduced circulating cortisol levels, parallel analyses indicated a significant decline in glucocorticoid receptor activity (Fig. 1F; GR:  $-0.391 \pm 0.035$ ,  $z = -11.20$ ,  $P < 0.0001$ ).

At the end of the 2-wk shelter period, animals were returned to their home outdoor field cages for 4 wk, during which all SIP-impacted immune parameters returned to baseline values (SI Appendix, Table S1).

**Social Buffering.** To determine whether prosocial engagement might buffer the immunoregulatory impact of SIP isolation, the same adult male macaques were subject to a second 2-wk SIP accompanied by a novel (unrelated) juvenile companion macaque (following an established conspecific caregiving protocol for abating effects of prolonged social isolation) (51). The 0.5- to 1.0-y-old male macaques were transferred to an individual shelter adjacent to each adult male, and a divider between the two shelters was subsequently removed to allow continuous interaction throughout the 2-wk SIP period. In all other respects the sheltering protocol was identical to the previous 2-wk isolated SIP. During juvenile-partnered SIP, adult macaques spent 23% of their time directly interacting with juveniles (e.g., grooming, contact, play), 51% of their time in the same cage, and 26% apart from the juvenile. The adults also showed a 54% reduction in abnormal behavior relative to isolated SIP (e.g., huddling, lying on floor, hanging on shelter walls; mean  $186 \pm 45$  s per 1,200-s observation period versus  $403 \pm 68$  during isolated SIP;  $F(1,20) = 27.05$ ,  $P < 0.0001$ ) and complementary increases in species-typical patterns of physical locomotion (+37%;  $89 \pm 22$  versus  $65 \pm 22$ ;  $F(1,20) = 21.76$ ,  $P < 0.0001$ ), sitting at rest (+29%;  $879 \pm 44$  versus  $680 \pm 57$ ;  $F(1,20) = 10.57$ ,  $P = 0.0040$ ), and ongoing exploratory behavior despite the arrival of a novel human intruder (a commonly employed measure of threat sensitivity; +267%;  $2.64 \pm 1.08$  exploration events per 60-s observation period versus  $0.72 \pm 0.32$ ;  $F(1,20) = 6.78$ ,  $P = 0.0170$ ).

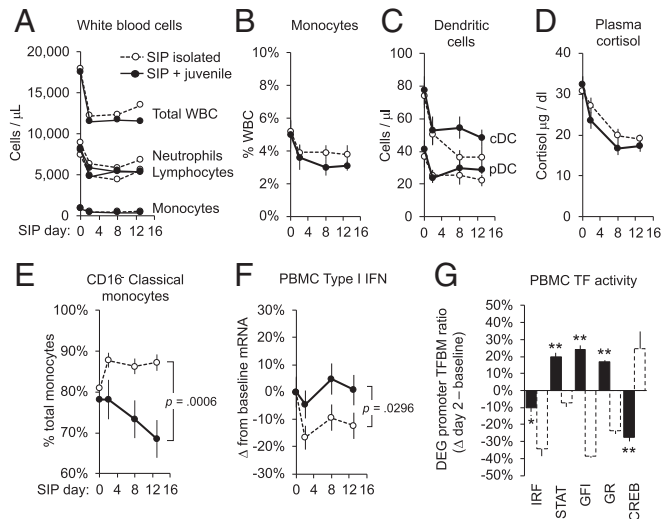
As shown in Fig. 2, SIP with a juvenile conspecific (solid symbol/solid lines) did not significantly abate either WBC declines in general (Fig. 2A) or declines in monocytes and dendritic cells (Figs. 2B and C). However, juvenile partnering did abate SIP effects on CTRA-characteristic immunoregulatory parameters including, 1) up-regulation of the classical monocyte subset (which now decreased from pre-SIP baseline, rather than increasing as observed in isolated SIP; Fig. 2E; SIP day × SIP mode interaction:



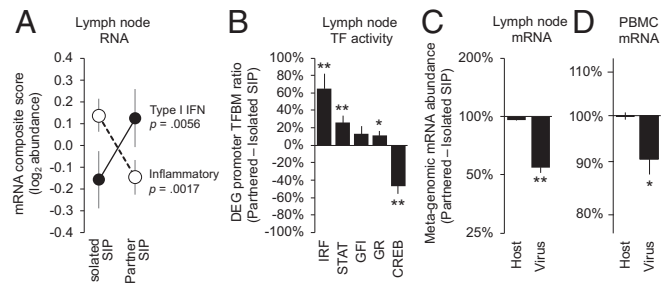
**Fig. 1.** Effect of SIP on immune parameters.  $n = 21$  community-housed adult macaques were relocated to individual indoor shelters for 14 d and assessed for (A) major leukocyte subsets, (B) red blood cells and other hematologic parameters, (C) relative prevalence of classical versus nonclassical monocytes, (D) per-cell expression of Type I IFN response genes in peripheral blood mononuclear cells (PBMC), (E) classical (cDC) and plasmacytoid (pDC) dendritic cells, and (G) plasma cortisol. (F) Change from baseline to SIP day 2 in bioinformatically inferred activity of IFN-related (IRF, STAT, GFI) and neuroendocrine-related (GR, CREB) transcription factors (TFs). Values: mean  $\pm$  SE;  $P$  values: mixed effect linear model SIP day effect. \*\* $P < 0.01$  difference from baseline.

$F(3, 20) = 8.81, P = 0.0006$ ); 2) down-regulation of Type I IFN gene expression (which now showed no significant decline from pre-SIP baseline; Fig. 2F; SIP day  $\times$  SIP mode interaction contrast:  $F(3, 3,981) = 2.99, P = 0.0296$ ); 3) down-regulation in bioinformatic indications of IFN-related transcription control pathways (which were all either quantitatively abated or fully reversed in analyses of 2,189 gene transcripts that showed consistent change in average expression from baseline to day 2 of juvenile-partnered SIP; Dataset S2; Fig. 2G; IRF:  $-0.156 \pm 0.075, z = -2.09, P = 0.0382$ ; STAT:  $0.262 \pm 0.029, z = 8.97, P < 0.0001$ ; GFI:  $0.312 \pm 0.028, z = 11.35, P < 0.0001$ ); and 4) bioinformatic indications of CREB activation (which now declined from pre-SIP baseline; Fig. 2G;  $-0.465 \pm 0.064, z = -7.28, P < 0.0001$ ). Parallel analyses indicated increased GR activity ( $0.225 \pm 0.015, z = 15.65, P < 0.0001$ ).

**Lymphoid Tissue Impact.** To assess the relevance of SIP-related changes in circulating WBC gene regulation for the lymphoid tissue environments in which leukocytes initiate adaptive antiviral immune responses (52), we biopsied axillary lymph nodes from each macaque at the end of each 2-wk shelter period. (Lymph nodes were not collected at pre-SIP baselines to avoid any immunologic impact of surgery during the SIP period.) Compared to lymph nodes collected after isolated SIP, those collected after juvenile-partnered SIP showed an 18% reduction in inflammatory gene expression (Fig. 3A;  $F(1, 18) = 13.54, P = 0.0017$ ) and a 22% increase in Type I IFN response gene expression (Fig. 3A;  $F(1, 18) = 9.87, P = 0.0056$ ). Promoter-based bioinformatic analysis of 884 gene transcripts showing consistent difference in expression following juvenile-partnered versus isolated SIP (Dataset S3) indicated increased activity of IFN-related transcription factors (Fig. 3B; IRF:  $0.724 \pm 0.144, z = 5.04, P < 0.0001$ ; STAT:  $0.332 \pm 0.092, z = 3.63, P = 0.0004$ ; and nonsignificant increase in GFI:  $0.724 \pm 0.144, z = 1.64, P = 0.1025$ ) accompanied by reduced activity of CREB ( $-0.929 \pm 0.235, z = -3.95, P = 0.0001$ ) and increased activity of the GR ( $0.149 \pm 0.072, z = 2.08, P = 0.0388$ ).



**Fig. 2.** Social buffering of SIP effects.  $n = 20$  adult macaques underwent a second 14-d SIP cycle paired with a juvenile macaque (solid lines/filled symbols). Effects were compared to isolated SIP trajectories (dashed lines/open symbols) for (A) major WBC subsets, (B) total monocytes, (C) dendritic cells, (D) plasma cortisol, (E) relative prevalence of classical versus nonclassical monocytes, (F) per-cell expression of Type I IFN response genes, and (G) RNA sequencing-based bioinformatic indications of IFN-related transcription factors (TFs) (IRF, STAT, GFI) and neuroendocrine-related transcription factors (TFs) (GR, CREB). Values: mean  $\pm$  SE;  $P$  values: SIP mode (isolated/paired)  $\times$  SIP day interaction. \* $P < 0.05$ , \*\* $P < 0.01$  difference from baseline.



**Fig. 3.** Effects on lymphoid tissue and viral activity. Lymph nodes were biopsied from  $n = 19$  macaques at day 14 of isolated and juvenile-partnered SIP and assessed for (A) expression of proinflammatory and Type I IFN response genes, (B) RNA sequencing-based bioinformatic indications of change IFN-related (IRF, STAT, GFI) and neuroendocrine-related (GR, CREB) transcription factors (TFs), and (C) metagenomic sequence analysis of viral and metazoan (host/macaque) transcript abundance. (D) Parallel metagenomic sequence analysis of viral and metazoan (host/macaque) transcript abundance in PBMC. Values: mean  $\pm$  SE;  $P$  values: mixed effect linear model SIP mode effect; \* $P < 0.05$ , \*\* $P < 0.01$ .

**Antiviral Impact.** To determine how the immunoregulatory alterations associated with SIP might impact host response to viral infection, we conducted metagenomic RNA sequencing of lymph node tissues to quantify the relative abundance of host-derived (metazoan) and viral-derived gene transcripts (53). Compared to lymph nodes collected after isolated SIP, those collected after juvenile-partnered SIP showed a 45% reduction in viral gene transcripts as a fraction of total lymph node RNA abundance (Fig. 3C;  $-0.264 \pm 0.026 \log_{10}$  viral RNA reads per million total RNA reads,  $F(1, 18) = 99.40, P < 0.0001$ ). To determine whether similar effects occur specifically for lymphotropic viruses, we conducted parallel metagenomic analyses of WBC RNA sequences collected at pre-SIP baseline and SIP day 2. Viral transcript abundance was 29-fold lower in circulating WBCs relative to lymph nodes, but results continued to show a 9.8% reduction in virus-derived gene transcripts during juvenile-partnered SIP (Fig. 3D;  $-0.046 \pm 0.018, F(1, 20) = 6.45, P = 0.0196$ ) whereas no significant reduction occurred during isolated SIP ( $-0.022 \pm 0.020, F(1, 20) = 1.23, P = 0.2801$ ).

## Discussion

Pandemic-style SIP induced rapid and persistent immunoregulatory alterations in rhesus macaques, including 30% to 50% reductions in circulating immune cell populations and CTRA-characteristic down-regulation of innate antiviral activity (Type I IFN response genes) and relative up-regulation of classical monocytes. These effects emerged within 48 h of “lockdown,” persisted for at least 2 wk, and abated within 4 wk of return to baseline social conditions. Provision of a novel juvenile partner during a subsequent round of SIP blunted CTRA-characteristic immunoregulatory dynamics (but not leukopenia), resulting in down-regulation of classical monocytes, increased Type I IFN gene expression, and preservation of antiviral gene regulation (IRF, STAT, GFI). Analyses of lymph nodes collected at the end of each SIP period showed parallel up-regulation of Type I IFN response genes and transcription control pathways following “lockdown with caregiving” compared to “lockdown alone.” Metagenomic sequencing confirmed the functional significance of changes in host antiviral gene transcription, documenting reduced viral gene expression during juvenile-partnered SIP relative to isolated SIP in both lymph nodes and circulating immune cells. These results identify significant reductions in host antiviral activity in both the circulating leukocyte pool available for recruitment into infected tissues and the lymphoid tissue leukocyte pool available to initiate adaptive immune responses (e.g., antibody and cytotoxic T cell

production) during 2 wk of SIP. These results also suggest a potential strategy for ameliorating the CTRA-characteristic gene regulatory impacts (but not circulating leukopenia) by promoting prosocial engagement during SIP. The implications of these immunoregulatory dynamics for symptomatic viral disease remain to be quantified in future research, but the substantial immunobiological and virological impacts observed here suggest a need for such studies.

The distinct effects of juvenile partnering on SIP-induced leukopenia (immune cell declines) and CTRA gene regulation (reduced antiviral activity and increased classical monocytes) imply the existence of at least two distinct biological mechanisms for the observed array of effects. Consistent leukopenia indicates that SIP is physiologically stressful regardless of partner status. The magnitude and consistency of leukopenia across all major leukocyte subsets (including dendritic cells) might be hypothesized to stem from the leukopenic effects of stress-induced glucocorticoid release from the hypothalamus–pituitary–adrenal axis (44–46). However, this mechanism is unlikely to mediate the observed effects because, 1) circulating glucocorticoid levels declined substantially over the 2-wk SIP periods [as previously observed (54, 55) and likely due to reduced exposure of adult males to dominance-related agonistic interactions in group housing (56, 57)] rather than increasing as would account for leukopenia (47); and 2) glucocorticoids selectively increase circulating neutrophil numbers (47), whereas neutrophil numbers declined in parallel with lymphocyte and monocyte counts during both SIP cycles. Global leukopenia is also inconsistent with the previously observed effects of acute SNS activation in up-regulating circulating neutrophil, monocyte, and lymphocyte numbers (48–50) rather than down-regulating them as observed here. As such, the physiological mechanisms underlying SIP-associated leukopenia remain to be defined, with changes in leukocyte development, cell death, and trafficking patterns representing key targets for future research.

By contrast, SIP-induced changes in SNS activity do provide a parsimonious explanation for the isolation-specific reductions in Type I IFN gene regulation, increases in CD16<sup>+</sup> classical monocyte prevalence (relative to CD16<sup>+</sup> nonclassical monocytes), and up-regulated viral activity in lymphoid tissue and circulating immune cells. These changes are all consistent with the SNS-induced CTRA gene regulation program (31–35), which is known to be activated by adverse social conditions in macaques (24, 25, 58) and has previously been linked to impaired control of viral infections (24, 25). Consistent with this hypothesis, 1) promoter-based bioinformatics analyses indicated up-regulation of the CREB transcription control pathway that mediates  $\beta$ -adrenergic signaling from the SNS (59), and 2) CREB activity was reduced by the presence of a juvenile partner during SIP, in parallel with other CTRA-characteristic regulatory dynamics. Reductions in lymph node CREB activity during juvenile-partnered SIP may also stem from reductions in stress-mediated neural activity and structural arborization of sympathetic nerve fibers within lymphoid tissues (25, 58). Parallel increases in GR activity during juvenile-partnered SIP may stem from reduction in SNS-mediated GR desensitization associated with stress myelopoiesis (33, 34, 60). However, definitive support for an SNS mechanism will require experimental inhibition of sympathetic nerve activity or  $\beta$ -adrenergic signaling to abrogate SIP effects on CTRA gene regulation.

The CTRA-inhibitory effects of juvenile-partnered SIP are consistent with previous research showing that caregiving, generativity, and other modes of prosocial engagement can down-regulate CTRA gene expression in humans (36–38). These effects are hypothesized to be mediated by activation of CNS reward circuits that laterally inhibit activity of CNS threat response systems (41, 42, 61) and prosocial engagement of the parasympathetic nervous system (62), both of which act to reduce basal sympathetic tone and the  $\beta$ -adrenergic signaling pathways that mediate CTRA gene expression (31, 32). Consistent with reduced

CNS threat processes, adult macaques displayed lower rates of distress-related behavior (e.g., huddling, hanging, lying) and higher rates of species-typical behavior (e.g., seated rest, normal mobility, cage exploration) during juvenile-partnered SIP compared to isolated SIP. However, it is possible that partnered SIP also acts in ways that do not involve prosocial motivation per se, such as effects of physical contact, motor activity, or microbial exposures. Given the marked impacts documented here, the isolated versus partnered-SIP paradigm may be a useful experimental system for broader analyses of the pathways through which social exposures buffer biological responses to adversity. Social exposures can also generate physiological costs resulting from social burdens (63) as previously observed when older adult macaques were paired with multiple juvenile partners (64). Adverse effects may be amplified by competing demands (e.g., from work, education, additional social partners, etc.) or more extended SIP durations than studied here and could be clarified by parametric variation of the present paradigm (e.g., > 2-wk duration; multiple partners; novel versus familiar juvenile partners, adult peers, biological relatives; competing engagements; etc.).

The present results suggest a psychobiological mechanism for the observation that parents and others who cohabit with children show reduced vulnerability to some viral diseases (65–68). Studies have documented reduced risk of COVID-19 (but not SARS-CoV-2 exposure/infection) among adults living in households with children (65–67). These effects have been interpreted as stemming from immune shielding (i.e., children's robust antiviral responses reduce the intensity of viral transmission to household adults and thereby reduce the incidence of symptomatic disease). The present analyses suggest an alternative mechanism whereby caregiving adults may show physiologically mediated alterations in immune cell gene regulation that promote host resistance to viral disease (e.g., elevated Type I IFN activity). Such effects would be consistent with previous viral challenge studies that document reduced risk of respiratory virus infections and symptomatic disease among parents (including those whose children have already left home) (68).

This research is subject to several limitations, including imperfect recapitulation of human “stay at home” policies (e.g., macaques were confined in novel indoor cages rather than a familiar “home”), a 2-wk duration (effects may differ for longer SIP durations characteristic of human public health mandates), assessment of adult males only (which might underestimate the protective effects of “caregiving” if such responses are more frequent or pronounced in females) (69), and a relatively simple partnering protocol (different effects may occur with different partner numbers or characteristics, or with greater competing demands). SIP also affects nonsocial processes (e.g., mobility, natural environment exposure), and the immunologic effects observed here cannot be attributed purely to social deprivation. Partnered SIP always followed isolated SIP in this study, which might confound partner status with habituation (although recurrent leukopenia shows any habituation to be partial at best). This study does not contain any direct measures of viral disease (tissue pathology, illness symptoms) or host resistance to de novo infection, and the health significance of the observed effects remains to be defined in future research.

SIP impaired host control of viral infections in this study, but these results do not imply that the costs of SIP outweigh its benefits. Policy analyses of disease prevalence capture the net effect of host resistance costs and viral exposure benefits, and substantial observational data have linked social distancing policies in general to reduced viral disease rates per unit time (9, 10). However, among all distancing policies examined, SIP and extended “stay at home” orders appear to have the weakest net benefit (i.e., above and beyond more targeted business closures, school closures, and restrictions on large gatherings) (9, 11–14). The present results suggest that the relatively modest epidemiologic benefits of SIP

policies may stem in part from their unrecognized costs in undermining host resistance to viral infection even as they reduce the probability of viral exposure. To the extent that SIP is retained as a policy response (e.g., due to political demand), it may be possible to enhance SIP's epidemiologic benefit by altering the mode and conditions of sheltering to maximize caregiving opportunities and other prosocial engagements. Mapping the psychological and biological mechanisms involved may also suggest new policy, behavioral, or pharmacologic strategies for controlling the immunological impacts of protracted social isolation and thus help evolve more sustainable and effective disease mitigation strategies for social control of pandemic infectious diseases.

## Methods

A total of 21 adult male rhesus macaques were relocated from their home 2,000-m<sup>2</sup> field cages containing 70 to 132 other macaques to 2 wk of individual housing in 2.0 × 0.8 × 0.7 m indoor quarters for adult male rhesus macaques at the California National Primate Research Center. Individual quarters comprised two standard individual housing cages (1.0 m W × 0.8 H × 0.7 m D) connected by an opened door and met all Institutional Animal Care and Use Committee, US Department of Agriculture, and US NIH guidelines for human macaque husbandry, including the presence of enrichment objects, daily foraging enrichment, and auditory and olfactory access to conspecifics in the same room. Relocation to individual quarters occurred between 8:00 and 8:45 AM. A 7.5 mL venipuncture blood sample was obtained at 3:00 PM 1 wk prior to and 2, 8, and 13 d after relocation. Distress-related and species-typical (non-distressed) behaviors were quantified by ethogram scoring of 5-min videotaped behavioral samples collected four times per day between 9:00 and 11:00 AM from each animal at day 1, 2, 7, 8, 12, and 13 and separate observations during a "human intruder" behavioral challenge at 3:00 PM on day 9 (see details in *SI Appendix*). On day 14, each animal underwent an axillary lymph node biopsy and subsequently recovered in the hospital for ≥5 d before return to their home field cage.

Approximately 1 mo after return to their home field cage, each macaque was again relocated to the same individual shelter, which now contained a 0.5- to 1.0-y-old novel (unrelated) male macaque (following previous "therapy monkey" protocols for socially isolated macaques) (51). With the exception of juvenile partner pairing, all other aspects of the sheltering protocol were identical to those of the previous round of isolated sheltering.

All procedures were approved by the Institutional Animal Care and Use Committee of the University of California, Davis.

**Hematology, Immune Cell, and Hormone Analysis.** Detailed analytic methods are presented in *SI Appendix, Detailed Methods*. Briefly, each blood sample was assayed by automated complete blood count with differential; flow cytometric enumeration of major leukocyte subsets, classical (CD16<sup>-</sup>), and nonclassical (CD16<sup>+</sup>) monocytes, and CD3<sup>-</sup>/CD20<sup>-</sup>/HLA-DR<sup>+</sup>/CD123<sup>+</sup> pDC and CD3<sup>-</sup>/CD20<sup>-</sup>/HLA-DR<sup>+</sup>/CD1c<sup>+</sup> cDC; chemiluminescent immunoassay of plasma cortisol; and mRNA sequencing of peripheral blood mononuclear cells (PBMCs) to generate genome-wide transcriptional profiles (70). Transcriptional profiles were analyzed to quantify expression of prespecified sets of genes involved in Type I IFN, proinflammatory, and CTRA gene regulation (71). Activity of Type I IFN- and pDC-related transcription control pathways (IRF, STAT1, GFI) and SNS- and GR-related transcription control pathways (CREB, GR) was also assessed using promoter-based bioinformatics analyses of all gene transcripts (genome-wide) found to show consistent up-regulation versus down-regulation from baseline to SIP day 2 (blood cells) or from isolated to juvenile-partnered SIP (lymph nodes). Viral and metazoan gene expression were quantified by metagenomic RNA profiling (53).

**Data Analysis.** Hematology, flow cytometry, cortisol, and leukocyte RNA data were analyzed by mixed effect linear models (SAS 9.4 PROC MIXED) specifying fixed effects of SIP day (baseline, day 2, 8, and 13), SIP mode (isolated versus juvenile-partnered), a SIP day × SIP mode interaction, and a random effect of subject (animal) with a fully saturated (unstructured) variance-covariance matrix to account for heteroscedasticity and correlation among residuals. For parameters assessed once per SIP cycle (behavior, lymph node RNA), parallel mixed effect linear models analyzed fixed effects of SIP mode (isolated versus juvenile-partnered).

**Data Availability.** Anonymized RNA profiling data have been deposited in Gene Expression Omnibus ([GSE174065](https://www.ncbi.nlm.nih.gov/geo/query/acc.cgi?acc=GSE174065)) (70).

**ACKNOWLEDGMENTS.** This research was supported by NIH Grant Nos. R01 AG033590, R01 AG043404, and P51 OD011107. We thank Leon French for helpful suggestions on metagenomic analyses and the UCLA Neuroscience Genomics Core Laboratory for sequencing services.

1. M. Pinquart, S. Sörensen, Influences of socioeconomic status, social network, and competence on subjective well-being in later life: A meta-analysis. *Psychol. Aging* **15**, 187–224 (2000).
2. J. P. Capitanio, "Health and social relationships in nonhuman primates: Toward a comparative health psychology" in *Oxford Handbook of Health Psychology*, H. S. Friedman, Ed. (Oxford University Press, NY, 2011), pp. 860–883.
3. Y. C. Yang et al., Social relationships and physiological determinants of longevity across the human life span. *Proc. Natl. Acad. Sci. U.S.A.* **113**, 578–583 (2016).
4. J. T. Cacioppo, S. Cacioppo, J. P. Capitanio, S. W. Cole, The neuroendocrinology of social isolation. *Annu. Rev. Psychol.* **66**, 733–767 (2015).
5. J. Holt-Lunstad, T. B. Smith, J. B. Layton, Social relationships and mortality risk: A meta-analytic review. *PLoS Med.* **7**, e1000316 (2010).
6. J. T. Cacioppo, S. Cacioppo, Loneliness in the Modern Age: An Evolutionary Theory of Loneliness (ETL). *Adv. Exp. Soc. Psychol.* **58**, 127–197 (2018).
7. C. L. Nunn, S. Altizer, *Infectious Diseases in Primates: Behavior, Ecology and Evolution*. (Oxford University Press, Oxford, 2006).
8. G. Dezechache, C. D. Frith, O. Deroy, Pandemics and the great evolutionary mismatch. *Curr. Biol.* **30**, R417–R419 (2020).
9. J. M. Brauner et al., Inferring the effectiveness of government interventions against COVID-19. *Science* **371**, 6531 (2021).
10. D. K. Chu et al., COVID-19 Systematic Urgent Review Group Effort (SURGE) study authors, Physical distancing, face masks, and eye protection to prevent person-to-person transmission of SARS-CoV-2 and COVID-19: A systematic review and meta-analysis. *Lancet* **395**, 1973–1987 (2020).
11. R. Chaudhry, G. Dranitsaris, T. Mubashir, J. Bartoszko, S. Riazi, A country level analysis measuring the impact of government actions, country preparedness and socioeconomic factors on COVID-19 mortality and related health outcomes. *EClinicalMedicine* **25**, 100464 (2020).
12. Y. Liu, C. Morgenstern, J. Kelly, R. Lowe, M. Jit, CMMID COVID-19 Working Group, The impact of non-pharmaceutical interventions on SARS-CoV-2 transmission across 130 countries and territories. *BMC Med.* **19**, 40 (2021).
13. V. Chin, J. P. A. Ioannidis, M. A. Tanner, S. Cripps, Effects of non-pharmaceutical interventions on COVID-19: A Tale of Three Models. *medRxiv* [Preprint] (2020). <https://doi.org/2020.07.22.20160341> (Accessed 29 December 2020).
14. E. Bendavid, C. Oh, J. Bhattacharya, J. P. A. Ioannidis, Assessing mandatory stay-at-home and business closure effects on the spread of COVID-19. *Eur. J. Clin. Invest.* **51**, e13484 (2021).
15. A. Burlacu et al., Pandemic lockdown, healthcare policies and human rights: Integrating opposed views on COVID-19 public health mitigation measures. *Rev. Cardiovasc. Med.* **21**, 509–516 (2020).
16. M. E. Czeisler et al., Follow-up survey of US adult reports of mental health, substance use, and suicidal ideation during the COVID-19 pandemic, September 2020. *JAMA Netw. Open* **4**, e2037665 (2021).
17. T. J. VanderWeele, Challenges estimating total lives lost in COVID-19 decisions: Consideration of mortality related to unemployment, social isolation, and depression. *JAMA* **324**, 445–446 (2020).
18. E. R. Melnick, J. P. A. Ioannidis, Should governments continue lockdown to slow the spread of covid-19? *BMJ* **369**, m1924 (2020).
19. S. Cohen, Psychosocial vulnerabilities to Upper Respiratory Infectious Illness: Implications for Susceptibility to Coronavirus Disease 2019 (COVID-19). *Perspect. Psychol. Sci.* **16**, 161–174 (2021).
20. A. A. Madison, M. R. Shrout, M. E. Renna, J. K. Kiecolt-Glaser, Psychological and behavioral predictors of vaccine efficacy: Considerations for COVID-19. *Perspect. Psychol. Sci.* **16**, 191–203 (2021).
21. R. Mattos Dos Santos, Isolation, social stress, low socioeconomic status and its relationship to immune response in Covid-19 pandemic context. *Brain Behav. Immun.* **7**, 100103 (2020).
22. S. Cohen, W. J. Doyle, D. P. Skoner, B. S. Rabin, J. M. Gwaltney Jr, Social ties and susceptibility to the common cold. *JAMA* **277**, 1940–1944 (1997).
23. S. Cohen, W. J. Doyle, R. Turner, C. M. Alper, D. P. Skoner, Sociability and susceptibility to the common cold. *Psychol. Sci.* **14**, 389–395 (2003).
24. S. W. Cole et al., Myeloid differentiation architecture of leukocyte transcriptome dynamics in perceived social isolation. *Proc. Natl. Acad. Sci. U.S.A.* **112**, 15142–15147 (2015).
25. E. K. Sloan et al., Social stress enhances sympathetic innervation of primate lymph nodes: Mechanisms and implications for viral pathogenesis. *J. Neurosci.* **27**, 8857–8865 (2007).
26. T. V. Inglesby, J. B. Nuzzo, T. O'Toole, D. A. Henderson, Disease mitigation measures in the control of pandemic influenza. *Biosecur. Bioterror.* **4**, 366–375 (2006).
27. S. W. Cole et al., Social regulation of gene expression in human leukocytes. *Genome Biol.* **8**, R189 (2007).
28. S. W. Cole, L. C. Hawkley, J. M. Arevalo, J. T. Cacioppo, Transcript origin analysis identifies antigen-presenting cells as primary targets of socially regulated gene expression in leukocytes. *Proc. Natl. Acad. Sci. U.S.A.* **108**, 3080–3085 (2011).

29. S. Cohen, W. J. Doyle, D. P. Skoner, Psychological stress, cytokine production, and severity of upper respiratory illness. *Psychosom. Med.* **61**, 175–180 (1999).
30. W. J. Doyle, D. A. Gentile, S. Cohen, Emotional style, nasal cytokines, and illness expression after experimental rhinovirus exposure. *Brain Behav. Immun.* **20**, 175–181 (2006).
31. S. W. Cole, The conserved transcriptional response to adversity. *Curr. Opin. Behav. Sci.* **28**, 31–37 (2019).
32. S. W. Cole, Human social genomics. *PLoS Genet.* **10**, e1004601 (2014).
33. N. D. Powell *et al.*, Social stress up-regulates inflammatory gene expression in the leukocyte transcriptome via  $\beta$ -adrenergic induction of myelopoiesis. *Proc. Natl. Acad. Sci. U.S.A.* **110**, 16574–16579 (2013).
34. D. B. McKim *et al.*, Social stress mobilizes hematopoietic stem cells to establish persistent splenic myelopoiesis. *Cell Rep.* **25**, 2552–2562.e3 (2018).
35. T. Heidt *et al.*, Chronic variable stress activates hematopoietic stem cells. *Nat. Med.* **20**, 754–758 (2014).
36. S. K. Nelson-Coffey, M. M. Fritz, S. Lyubomirsky, S. W. Cole, Kindness in the blood: A randomized controlled trial of the gene regulatory impact of prosocial behavior. *Psychoneuroendocrinology* **81**, 8–13 (2017).
37. T. Seeman, S. S. Merkin, D. Goldwater, S. W. Cole, Intergenerational mentoring, eudaimonic well-being and gene regulation in older adults: A pilot study. *Psychoneuroendocrinology* **111**, 104468 (2020).
38. M. Moieni *et al.*, Feeling needed: Effects of a randomized generativity intervention on well-being and inflammation in older women. *Brain Behav. Immun.* **84**, 97–105 (2020).
39. N. I. Eisenberger, S. W. Cole, Social neuroscience and health: Neurophysiological mechanisms linking social ties with physical health. *Nat. Neurosci.* **15**, 669–674 (2012).
40. M. R. Mehl, C. L. Raison, T. W. W. Pace, J. M. G. Arevalo, S. W. Cole, Natural language indicators of differential gene regulation in the human immune system. *Proc. Natl. Acad. Sci. U.S.A.* **114**, 12554–12559 (2017).
41. J. E. LeDoux, D. S. Pine, Using neuroscience to help understand fear and anxiety: A two-system framework. *Am. J. Psychiatry* **173**, 1083–1093 (2016).
42. C. J. Leschak, N. I. Eisenberger, Two distinct immune pathways linking social relationships with health: Inflammatory and antiviral processes. *Psychosom. Med.* **81**, 711–719 (2019).
43. M. Swiecki, M. Colonna, The multifaceted biology of plasmacytoid dendritic cells. *Nat. Rev. Immunol.* **15**, 471–485 (2015).
44. L. Quatrini, S. Ugolini, New insights into the cell- and tissue-specificity of glucocorticoid actions. *Cell. Mol. Immunol.* **18**, 269–278 (2021).
45. A. H. Miller *et al.*, Effects of selective type I and II adrenal steroid agonists on immune cell distribution. *Endocrinology* **135**, 1934–1944 (1994).
46. F. S. Dhabhar, W. B. Malarkey, E. Neri, B. S. McEwen, Stress-induced redistribution of immune cells—from barracks to battlefields: A tale of three hormones—Curt Richter Award winner. *Psychoneuroendocrinology* **37**, 1345–1368 (2012).
47. A. S. Fauci, D. C. Dale, J. E. Balow, Glucocorticosteroid therapy: Mechanisms of action and clinical considerations. *Ann. Intern. Med.* **84**, 304–315 (1976).
48. R. J. Benschop, M. Rodriguez-Feuerhahn, M. Schedlowski, Catecholamine-induced leukocytosis: Early observations, current research, and future directions. *Brain Behav. Immun.* **10**, 77–91 (1996).
49. E. A. Bachen *et al.*, Adrenergic blockade ameliorates cellular immune responses to mental stress in humans. *Psychosom. Med.* **57**, 366–372 (1995).
50. V. A. Richlin, J. M. Arevalo, J. A. Zack, S. W. Cole, Stress-induced enhancement of NF- $\kappa$ B DNA-binding in the peripheral blood leukocyte pool: Effects of lymphocyte redistribution. *Brain Behav. Immun.* **18**, 231–237 (2004).
51. M. A. Novak, Social recovery of monkeys isolated for the first year of life: II. Long-term assessment. *Dev. Psychol.* **15**, 50–61 (1979).
52. K. Murphy, *Janeway's Immunobiology* (Garland Science, New York), ed. 8, 2011).
53. S. Flygare *et al.*, Taxonomer: An interactive metagenomics analysis portal for universal pathogen detection and host mRNA expression profiling. *Genome Biol.* **17**, 111 (2016).
54. D. A. Gust, T. P. Gordon, M. K. Hambright, Response to removal from and return to a social group in adult male rhesus monkeys. *Physiol. Behav.* **53**, 599–602 (1993).
55. A. A. Lilly, P. T. Mehlman, J. D. Higley, Trait-like immunological and hematological measures in female rhesus across varied environmental conditions. *Am. J. Primatol.* **48**, 197–223 (1999).
56. X. Feng *et al.*, Social correlates of the dominance rank and long-term cortisol levels in adolescent and adult male rhesus macaques (*Macaca mulatta*). *Sci. Rep.* **6**, 25431 (2016).
57. D. H. Abbott *et al.*, Are subordinates always stressed? A comparative analysis of rank differences in cortisol levels among primates. *Horm. Behav.* **43**, 67–82 (2003).
58. K. Chun *et al.*, Social regulation of the lymph node transcriptome in rhesus macaques (*Macaca mulatta*). *Psychoneuroendocrinology* **76**, 107–113 (2017).
59. B. Mayr, M. Montminy, Transcriptional regulation by the phosphorylation-dependent factor CREB. *Nat. Rev. Mol. Cell Biol.* **2**, 599–609 (2001).
60. M. L. Hanke, N. D. Powell, L. M. Stiner, M. T. Bailey, J. F. Sheridan, Beta adrenergic blockade decreases the immunomodulatory effects of social disruption stress. *Brain Behav. Immun.* **26**, 1150–1159 (2012).
61. J. E. LeDoux, J. Iwata, P. Cicchetti, D. J. Reis, Different projections of the central amygdaloid nucleus mediate autonomic and behavioral correlates of conditioned fear. *J. Neurosci.* **8**, 2517–2529 (1988).
62. S. W. Porges, *The Polyvagal Theory: Neurophysiological Foundations of Emotions, Attachment, Communication, and Self-regulation* (W. W. Norton, New York, 2011).
63. R. Glaser, J. K. Kiecolt-Glaser, Stress-induced immune dysfunction: Implications for health. *Nat. Rev. Immunol.* **5**, 243–251 (2005).
64. C. L. Coe, W. B. Ershler, M. Champoux, J. Olson, Psychosocial factors and immune senescence in the aged primate. *Ann. N. Y. Acad. Sci.* **650**, 276–282 (1992).
65. H. Forbes *et al.*, Association between living with children and outcomes from COVID-19: An OpenSAFELY cohort study of 12 million adults in England. *medRxiv* [Preprint] (2020). <https://doi.org/10.1101/2020.11.01.20222315> (Accessed 20 January 2021).
66. R. Wood *et al.*, Sharing a household with children and risk of COVID-19: A study of over 300 000 adults living in healthcare worker households in Scotland. *medRxiv* [Preprint] (2020) <http://dx.doi.org/10.1136/archdischild-2021-321604> (Accessed 20 January 2021).
67. B. Arpino, V. Bordone, M. Pasqualini, No clear association emerges between inter-generational relationships and COVID-19 fatality rates from macro-level analyses. *Proc. Natl. Acad. Sci. U.S.A.* **117**, 19116–19121 (2020).
68. R. S. Sneed, S. Cohen, R. B. Turner, W. J. Doyle, Parenthood and host resistance to the common cold. *Psychosom. Med.* **74**, 567–573 (2012).
69. S. E. Taylor, Tend and befriend: Biobehavioral bases of affiliation under stress. *Curr. Dir. Psychol. Sci.* **15**, 273–277 (2006).
70. S. W. Cole, J. P. Capitanio, Lockdown, caregiving, and antiviral gene regulation in macaques. *Gene Expression Omnibus*. <http://www.ncbi.nlm.nih.gov/geo/query/acc.cgi?acc=GSE174065>. Deposited 7 May 2021.
71. S. W. Cole, M. J. Shanahan, L. Gaydosh, K. M. Harris, Population-based RNA profiling in Ad Health finds social disparities in inflammatory and antiviral gene regulation to emerge by young adulthood. *Proc. Natl. Acad. Sci. U.S.A.* **117**, 4601–4608 (2020).