

# UC Office of the President

## iPRES 2009: the Sixth International Conference on Preservation of Digital Objects

### Title

Towards Support for Long-Term Digital Preservation in Product Life Cycle Management

### Permalink

<https://escholarship.org/uc/item/9vb753xd>

### Authors

Wilkes, Wolfgang  
Brunsmann, Jörg  
Heutelbeck, Dominic  
et al.

### Publication Date

2009-10-05

### Supplemental Material

<https://escholarship.org/uc/item/9vb753xd#supplemental>

Peer reviewed

# iPRES 2009

THE SIXTH INTERNATIONAL CONFERENCE ON THE PRESERVATION OF DIGITAL OBJECTS

## Proceedings

October 5-6, 2009  
Mission Bay Conference Center  
San Francisco, California

---



California Digital Library

# Towards Support for Long-Term Digital Preservation in Product Life Cycle Management

Wolfgang Wilkes\*, Jörg Brunsmann\*, Dominic Heutelbeck\*, Andreas Hundsdörfer\*\*, Matthias Hemmje\*, Hans-Ulrich Heidbrink\*\*

\*Faculty of Mathematics and Computer Science  
University of Hagen  
D-58084 Hagen  
+49-2331-987-2172

{wolfgang.wilkes|joerg.brunsmann|dominic.heutelbeck|matthias.hemmje}@fernuni-hagen.de

\*\* InConTec GmbH  
Kirschenallee 7  
D-96152 Burghaslach  
+49-9552-931494

{andreas.hundsdoerfer|hans-ulrich.heidbrink}@incontec.de

## Abstract

Important legal and economic motivations exist for the design and engineering industry to address and integrate digital long-term preservation into product life cycle management (PLM). Investigations revealed that it is not sufficient to archive only the product design data which is created in early PLM phases, but preservation is needed for data that is produced during the entire product lifecycle including early and late phases. Data that is relevant for preservation consists of requirements analysis documents, design rationale, data that reflects experiences during product operation and also metadata like social collaboration context. In addition, also the engineering environment itself that contains specific versions of all tools and services is a candidate for preservation. This paper takes a closer look at engineering preservation use case scenarios as well as PLM characteristics and workflows that are relevant for long-term preservation. Resulting requirements for a long-term preservation system lead to an OAIS (Open Archival Information System) based system architecture and a proposed preservation service interface that respects the needs of the engineering industry.

## Introduction

The SHAMAN digital preservation project (SHAMAN, 2009) investigates the needs of different applications domains which are known as *Integration & Demonstration Subprojects* (ISP). The ISPs include:

- Memory institutions: scientific publishing in libraries and documents in governmental archives
- Data resources used in e-Science applications
- Industrial design and engineering industry

The industrial design and engineering industry is characterized by a big number of heterogeneous design and development tools that are organized by product life cycle management (PLM) and product data management (PDM) systems (SHAMAN, 2008). Those PLM and PDM systems provide services like company-adapted workflows, data integration and version and configuration management. A large number of heterogeneous data is created during execution of all PLM phases. Companies in the design and engineering industry consider long-term preservation of such product data as an additional asset to their PLM/PDM systems. As discussed in (Heutelbeck et al, 2009) there are several important motivations for design and engineering companies to engage in digital long-term preservation. These include legal requirements defined by law and contracts as well as economic reasons such as efficient reuse. For long-term preservation, the OAIS (Open Archival Information System) is widely accepted as reference architecture. By analyzing the design and engineering industry this paper derives a number of requirements, which have to be satisfied by digital preservation systems in order to be adoptable within state-of-the-art design and engineering environments.

This paper is organized as follows: we first give a short introduction to the Open Archival Information System reference architecture. Then we lay out several use case scenarios for preservation system access in the engineering industry. We proceed by describing characteristics of PLM based workflows and existing shortcomings of these implementations. From the described use case scenarios and shortcomings we derive requirements for long-term preservation

systems in the engineering industry. Finally, we propose a high-level architecture and service interface for a long-term preservation system capable for supporting the needs of PLM systems.

## Open Archival Information System

An OAIS (Open Archival Information System) (CCSDS, 2002) is an archive consisting of an organization of people and systems that have accepted the responsibility to preserve information and make it available for a *Designated Community*. The OAIS provides a conceptual reference architecture and does not specify a concrete implementation.

The **OAIS environment model** consists of the OAIS archive and three external actors.

- A *producer* is a person, organization or system that provides the digital information to be preserved.
- A *consumer* is a person, organization or system that accesses the OAIS systems to find and acquire preserved information. The *Designated Community* which may be composed of multiple user communities is an identified group of potential consumers who should be able to understand a particular set of information.
- The *Management* are those persons or organizations who set the overall OAIS policies in the sense of management's responsibilities, not the daily operational archive administration.

While investigating use cases and requirements it is necessary to focus on the needs of the designated community which will be done in the next section.

The **OAIS functional model** consists of six major functional entities. The *Ingest* functional entity accepts one or more Submission Information Packages (SIPs) and creates Archival Information Packages (AIPs), which it provides to *Archival Storage* for preservation. *Ingest* also sends Descriptive Information (DI) to the *Data Management* functional entity. Consumers interact with the *Access* function, which uses the Descriptive information to find the content information of interest. Access retrieves AIPs from Archival Storage and sends Dissemination Information Packages (DIPs) to the consumer. *Administration* oversees the day-to-day operation of the archive, and it receives advice from *Preservation Planning* on evolving strategies and mechanism for preservation. All six functional entities are further broken down in the OAIS reference model.

OAIS-based preservation systems might use some of the following preservation methods:

- *Migration* is the continuous translation of data between data formats and systems.
- *Transformation* is the conversion of data from one format to another format that is assumed to be more preservable.

- *Emulation* (virtualization) is the duplication of functionality of a system running on another system.

## Designated community use case scenarios in the engineering industry

Since the requirements for a preservation system are driven by the needs of the preservation system consumers, we study these use cases in more detail. The structure of use case scenarios for preserving engineering data follows the basic motivations of corporate preservation, as introduced by (Heutelbeck et.al., 2009). Here, we extend the motivations with concrete examples:

### Legal use cases

In legal scenarios, preservation is mandatory by either contract or law. Legal defense can be prepared by preserving engineering data. Some examples are:

- A malfunction in a 40 year old airplane results in a crash which leads to serious injuries or even death of pilots and passengers. An investigation of agencies demand access to preserved data from the manufacturing company.
- Malfunction in medical equipment can cause serious health problems for patients or even lead to deaths.
- A malfunction in automotive electronics destroys other parts of a car and can result in an accident.

### Economic use cases

Economic use cases seek to increase the return on investment by lowering the cost for activities such as reuse, maintenance, refitting, and training. Examples are:

- As a consequence of a malfunction in a 40 year old aerospace unexpected downtimes of airplanes, spacecraft or satellites occur that result in a financial damage for the company. An engineer of the operating company will use the preserved product data to analyze a potential error.
- Products with a long lifetime are occasionally enhanced during their lifetime, either to introduce new functionality or to adopt new requirements coming from customers or the market. Depending on the impact of these modifications on different areas of a product, it might be necessary to check out either portions or the total product data.
- A future engineer takes some parts (e.g. the enclosure) of an existing product and reuses it for a new product. Sophisticated search functionality supports him in finding the product data that fits his needs. Following this kind of approach the advantage is a shorter time to market for a new

product and the reuse of parts which have already passed quality assurance tests etc.

- A 3<sup>rd</sup> party provider for electronic equipment wants to develop and market add-on equipment for a company's product. He can selectively access the company products design data to investigate specification details and design recommendations for interfaces.
- A product recall happens as a result of malfunction. The engineering department has to checkout the product design data, fix the problems and create a new revision of the product to pass it again to manufacturing.

### Archive consumers

Based on these use case scenarios we can identify the actors (consumers, designated community) for accessing engineering data that is preserved on a long-term basis:

- Future engineers
- Investigators
- Other companies
- Governmental authorities
- Regulatory agencies

We can identify two major kinds of requirements from an access point-of-view:

- Access of the (native) engineering design data for reuse. The engineer needs full access to those parts of the design data which he wants to reuse. In electronic engineering this is the logical design, simulation models, placement data for the physical design, specifications etc.
- Access of representations of the design data like PDF-documents, images of 2D-drawings, which have been created from the native design data, to support service personnel, regulatory needs or e.g. ISO9000 requirements.

### PLM characteristics

This section lays out the fundamental properties that exist in PLM based environments. We describe characteristics that are inherent to the engineering industry and that affect requirements and in consequence the system architecture:

#### Overview

Products in the aerospace, automotive, chemical and petroleum, electronics, energy and utilities as well as shipbuilding industry pass a product life cycle that spans from phases like idea generation, requirements collection, product planning, development, process planning, production, operation to disposal and recycling.

During the early phases of the product life cycle (e.g development phase) PDM systems are involved. PDM systems are used in the engineering and design

communities in order to manage the product concept with the objective to generate reproducible product configurations. Therefore PDM systems maintain the product design as versioned data in a repository. PDM functions as interface between technical and commercial data processing, i.e. between CAD systems on the one side and procurement and production on the other side.

PLM systems extend PDM functionalities by managing the entire lifecycle of a product from conception to service and disposal. PLM integrates people, data, processes and business systems and provides a product information backbone for companies and their extended enterprise.

### Engineering system characteristics

In the following we focus on two areas of engineering systems which are relevant for preservation:

- Data formats and models
- Workflow, processes and the product life cycle

#### Data formats and models

A product is described from many different viewpoints, e.g. an electronic product is described by geometry, netlist, routing and placement, simulation models, 3D mechanical construction data, etc. Each different viewpoint is composed of a number of (sub-) objects. Thus, we can formulate the following characteristics:

**Product data size.** The size of product data is large – the complete design information for a complex product may need gigabytes of data.

**Product data collection.** A product is described by a collection of digital objects. An electronic product is made up by many different components (enclosure, printed circuit boards, cables, software etc.) which are developed in different systems that use different file formats. In addition, references to objects outside the boundaries of PLM systems may be involved, e.g. to information captured in an enterprise resource planning system (like SAP R/3).

**Multiple native formats.** Digital engineering objects are created in multiple native formats of CAD systems. Even one assembly in mechatronics might contain multiple produced design elements coming from different sources represented in several different file formats. A unified model covering all objects in all design and engineering disciplines does not exist.

Design data is usually produced by the use of tools. Therefore, we can formulate two further characteristics which are important for digital preservation:

**Change of native formats.** Typically, CAD vendors release one major release per year which contains additional functionality. In most cases the internal data model changes or is extended. Additionally, minor releases (service packs) are deployed several times a

year which combine bug fixes with minor enhancements.

**Copyright on formats.** Most of the native formats are proprietary and thus not generally readable. The interpretation of a native format usually requires the use of a specific tool of a specific vendor.

Even in the context of a PLM system, the data may not be self-contained, i.e. there may exist external references, e.g. to globally maintained ontologies and classifications, or to objects in databases of collaboration partners. This leads to the two following characteristics:

**Proprietary taxonomy description:** Drawings, components, connectors, standard parts and other steady used design elements are managed in specific libraries that are created and maintained external to a company. Global element libraries are mapped into local company libraries. This happens in many companies with proprietary taxonomy description including the geometrical layout of the design objects.

**Links to externally developed designs.** Due to the complex nature of product designs, products are often created in collaborative projects by several companies. These companies are geographically distributed and maintain their local design repository that contains references to other parts of the product data model.

### **Workflow, processes and the product life cycle**

A product is developed in complex processes which partly follow strict workflows but which also contain creative phases of collaboration. These processes are organized in many different ways:

**Company specific design methodologies.** The design methodology can vary significantly from company to company. In addition, it has to be distinguished between companies which have a full-blown design process with electronic (chip, printed circuit board (PCB) and cabling) and mechanical design and others who are doing only a fraction of it.

**Project heterogeneity.** Even engineering projects within the same company can differ significantly regarding the policies and best practices they have to follow, depending on the kind of product, for which market and region, etc.

Design processes are collaborative processes where a number of people work together to create products:

**Collaboration.** Product data is shared among people and tools. Collaboration takes place within the same company or across different companies. Inter-company collaboration requires sharing of information, but only as far as necessary for the collaboration. Companies are very sensitive to a protection of their data (intellectual property) from unwanted exchange with collaboration partners.

**Geographical distributed product lifecycle.** Products are designed, manufactured and serviced in a globally distributed environment.

Many designs are variations of existing designs. Thus, existing designs have to be kept retrievable:

**Design reuse.** Engineers often search, browse and retrieve already developed designs in order to get ideas, examples or reusable items.

The different design phases are performed in different contexts (tools, locations, people, etc.). Thus, a lot of metadata and context data is produced during the course of product development.

**Metadata and context data creation during the whole lifecycle.** During the design and development processes not only product data but also metadata describing the performed processes are created. For example, during collaborations between different domains like eCAD/mCAD and during interactions between various PLM phases (e.g. change request from requirement analysis to product development) social context data is created. This data needs to be collected during the whole product lifecycle.

**Version and configuration management system usage.** Existing PLM implementations contain version and configuration management that partly archive product data.

### **Shortcomings and problem statement**

Although several academic and industrial projects already tackle the problem area of long-term preservation of engineering data, some important aspects have not been considered so far (Brunsmann et al, 2009). The discussed characteristics represent a basis for finding missing project scopes and shortcomings of existing PLM implementations. The identified shortcomings are grouped by OASIS architecture functionality.

#### **General**

The state-of-the-art preservation in PLM-based systems is creation and storage of versions in huge PLM repositories when certain milestones are reached. Archiving of product designs is done by creating backups of PLM repositories. Of course, these PLM repositories do not offer preservation functionalities. Thus, the change to a different tool or PLM system is not possible.

If data archiving is considered by existing projects, then only geometric data is archived. However, as described above, product designs do not consist only of geometric data which means that the other data is lost forever.

#### **Data ingest**

The practice to archive and create metadata only once makes the archival step quite complex. This lowers the acceptance of the archiving process. Unfortunately, methods for automatic extraction of metadata are currently missing during ingestion or

during creation of data. Therefore, capturing of metadata is perceived as intrusive and its value for later access to the archived data is not understood. In addition, valuable (meta) data is created during the whole lifecycle. Metadata include data about processes, people, product data, provenance and collaboration. If this data is not fully collected during the process, it is lost forever.

Company collaborations lead to distributed data repositories. The collection of distributed data for archiving is not provided by current PLM solutions. In addition, it is not guaranteed that all companies use tools of the same vendor in the same version.

The data that is created and ingested in one PLM phase is interconnected with objects from other phases, e.g. a product design depends on the requirements document, a physical layout depends on the logical design or a document created in the service phase depends on the product design. These relationships and connections to other data and metadata that span over several PLM phases have not been on the radar of long-term preservation projects in the engineering industry.

### Data access

For product design reuse and all other use cases, searching and finding of product designs is essential, but can only be done in a reasonable way if semantics is attached to the archived product data. Unfortunately, semantics is neither attached nor archived for a product design by existing PLM implementations.

Since the archived product design are only available in native formats the data can not be used with future tool revisions unless the data is not transformed into vendor-neutral formats.

### Preservation planning

Existing projects concentrate on migration as their preservation method which creates problems due to the high frequency of format or system changes. Other existing projects use the method of transformation to vendor-neutral formats (Ball, 2008), (Lubell, 2008). But transformation does not solve all problems since the neutral format usually does not cover 100% of the native format and vendor-neutral formats evolve with the evolution of the native formats. Other methods like emulation or system preservation have not been considered in more detail.

If the system environment and the proprietary product data is archived it is not guaranteed that valid software licenses for applications are available if the archived native data is accessed several years later.

Since global taxonomies standards evolve, independently archived data that references these global standards may become unusable without notice.

## Requirements

The examination of characteristics and shortcomings and the analysis of the use case scenarios of the previous sections lead to a number of high-level requirements for digital preservation systems in PLM:

### General

**Process integration.** Since in all PLM phases relevant data is created it should be possible to integrate archiving system functionality into all PLM based workflows.

**Modularity and adaptability.** Since the design methodology is very different in different companies a digital preservation system should be modular, customizable and adaptable.

**Service interface availability.** It must be possible to access the preservation functionality via application programming interfaces. This ensures that tools written in different programming languages, running on different operating systems can access preservation functionality.

**System autonomy.** The preservation system has to be independent from the specific PLM system that currently uses the preservation system. It is desirable to enable a switch to another PLM system without loss of archived product data. It should also be possible to preserve the data without having access to an existing PLM system.

### Data ingest

**(Meta)data and file format standards.** The system should be able to transform multiple native formats into standard vendor-neutral formats. The system should be aware of standardized (meta)data and file formats so that future tools are able to interpret the data. The reference model should be able to accommodate existing standard metadata and file formats that are used by many companies and during collaborations. In addition the model should allow new standards to be included.

**Parallel archiving of native and standard format.** The system must be able to archive both native and standard formats in parallel. Metadata generation and preservation. To enable engineers to find existing designs which can be reused the system should create and store metadata that describe the archived designs for searching on a reasonably detailed level.

**Metadata include graphics and significant properties.** The extraction of metadata should be possible both automatically and manually.

**Process history tracking.** For audit and error checking processes it is necessary to archive not only the product data but also information about the design process of a product. Therefore, at all stages of the design and preservation process automated as well as interactive user actions should be monitored and added

to the change history of the stored design objects. This practice enables to search, retrieve and understand a product design.

**Data validation.** The system should validate the data before it is ingested into the archive and after the access from the archive. Validation should include check for completeness and correctness.

**Packaging of design (meta)data.** In order to allow the retrieval of parts of a product design (e.g. the motherboard of a computer) or data reflecting a certain stage of the design cycle (e.g. logical design or physical design), the system should be able to package design data respectively.

## Data Access

**Intellectual property rights protection.** The system should restrict the access to all CAD objects and properties in the design files. This ensures the protection of intellectual properties that is required in collaboration processes where different companies are involved.

**Data validation.** The system should also validate the accessed data for completeness and correctness.

**Access to parts of a product design.** A product design consists of a collection of objects. The system should allow access to the complete design as well as to parts of the design (e.g. logic design or mechanical construction data). If product data is reused with old design tools it must be ensured that the design or directory structure is maintained in the archive.

**Search and retrieval of product data by metadata.** Engineers will require to access data from different projects in different data formats, created by different design tools. The system should provide discovery mechanisms for archived product designs.

## Data preservation planning

**Migration support.** Due to the frequent changes of file formats the system should support the migration of archived product design in order to be in sync with the appropriate CAD tool and PLM system versions. Archived data must be migrated either on access or following a scheduled preservation plan.

**PLM process triggers for preservation planning activities.** Process milestones influence the necessity to keep specific formats in the archive, e.g. after milestone “end of life” the native format may become obsolete.

**External taxonomy dependencies.** Elements of component libraries are described by taxonomies that are external to the companies. The system should maintain references and mappings to specific versions of these taxonomies.

**Versioning of parts of a complete product design.** A product design consists of a hierarchy of dependent objects. However, it is possible that parts of an archived product design are deleted or updated or new objects are added to it (for example, during the

maintenance phase of a product). Therefore the system should allow the creation of versions of a product design and put them under configuration control.

**External object maintenance.** The system should maintain relationships to objects outside of the PLM system, e.g. to an ERP system.

## High-level system architecture

In this section we map the given requirements to the OAIS reference architecture and derive extensions or adaptations to OAIS functionality. We identify steps in the workflows managed by PLM systems where a link to such a preservation system is possible.

As already described in the introduction, the SHAMAN project investigates the need of three different application domains. These different domains share a similar lifecycle which is shown in figure 1 and described below.

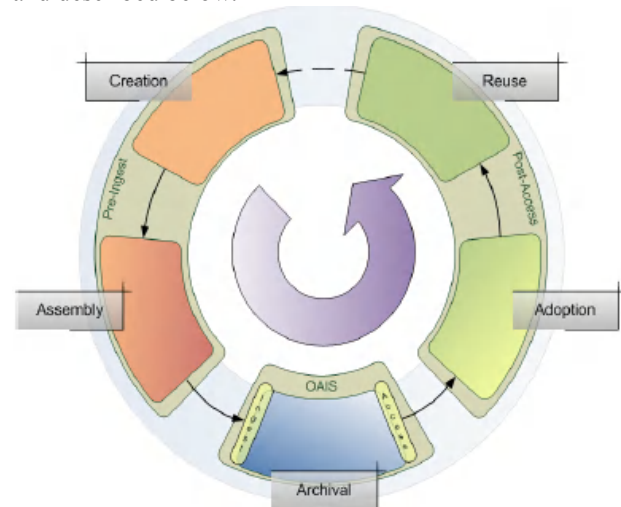


Figure 1: SHAMAN information life cycle

## SHAMAN information lifecycle

The proposed SHAMAN lifecycle (Brocks, 2009) contains the phases pre-ingest with creation and assembly, archival, and post access with adoption and reuse.

- During *pre-ingest* all activities are executed that must be taken prior to the ingestion of data into the preservation system:
- The *creation* phase gives birth to new information that could be the result of complex processes involving many producers. In the engineering industry this is the creation of archiving relevant metadata in real-time during all phases of the PLM process.
- During the *assembly* phase additional information that is relevant for archiving is collected. Assembly assures that enough information is archived so that a digital object remains reusable for a future consumer. In the engineering industry all relevant data is collected that is needed to



correctly interpret a product design (geometry, coordinate list, metadata, product component libraries, simulation and verification data).

- During the *archival* phase the digital object is stored and maintained in a preservation system. Policies describe the lifetime and migration of digital objects.
- The *post-access* comprises all activities that are needed for preparing the final access of the preserved data:
- During the *adoption* phase the archived digital objects are adapted for domain specific reuse that a preservation system cannot accommodate. In the engineering industry the archived data formats are translated to formats that are interpretable with current tools.
- During the *reuse* phase the consumer exploits the archived information. Reuse may lead to the creation of new digital objects that later are also candidates for archiving. In the engineering industry an archived product design can be imported into a proprietary tool for creating product variations.

After having described the information lifecycle in general we are able to specify a SHAMAN-based high-level system architecture for the engineering industry (see figure 2). The systems are interconnected with solid (use-relationship) and dashed (reference-relationship) arrows. The relevant key aspects of the figure are described starting from the top.

### Actors and tools

During the whole product life cycle (from idea generation to recycling) the system is used by producers and consumers which are assisted by various tools that can be plugged into the overall PLM system infrastructure. The tools are able to display and modify the product data.

### Core PLM system

The core PLM system consists of the standard PLM components like workflow, collaboration and the management of data, versions and configurations. The core PLM system will be used by the upper tool layer and makes use of the long-term preservation functionality and the PLM repository that are both described below.

### Preservation enabled PLM system

The preservation enabled PLM system consists of the core PLM system enhanced with preservation functionality. This preservation functionality is responsible for executing relevant actions during the pre-ingest and post-access phase.

For example, during the pre-ingest phase the system collects all relevant product data that is needed

for archiving. Also, during pre-ingest native, proprietary formats are converted into vendor-neutral formats for archiving. In addition, it may be decided to archive also the system environment (software, tools, etc.). Pre-ingest rules determine what and when to archive. For example, if a specific phase of the PLM process is reached a rule might determine to archive the product design.

During post-access, the preservation enabled PLM system transforms the vendor-neutral archival format into the current native format. Also, the system might reconstruct the previously archived system environment. In addition, domain specific *post-access-rules* are specified and executed. A post-access rule might embed the retrieved product design into the current tool landscape and create relevant relationships between the product design and current data models and ontologies.

Pre-ingest and post-access rules are domain specific and do not include activities that are part of the preservation.

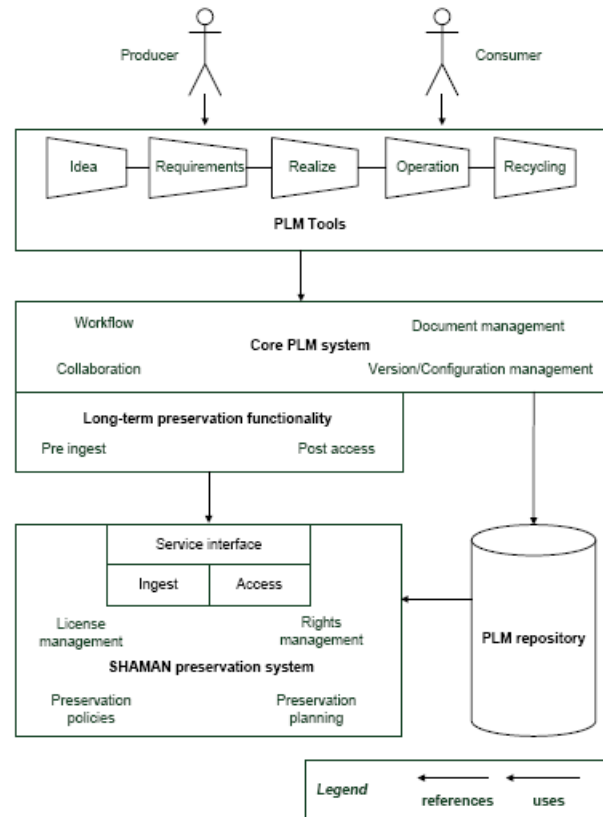


Figure 2: System architecture

### SHAMAN preservation system

The preservation enabled PLM system makes use of the SHAMAN preservation system. This preservation system offers a service interface that includes ingest and access functionality. Such a service interface decouples the preservation system from other systems and allows flexible use even from systems that resides in other companies or institutions.

Therefore it is necessary that the preservation system also includes the management of rights to prevent unauthorized access to the archived data. The preservation system also includes standard preservation planning functionality (obsolescence detection) and preservation policy management. The management of software licenses is also needed to ensure legal access to file formats and tools.

*Preservation policies* define principles that guide the preservation of digital objects according to company-, project-, document type- or even object-based guidelines. The PLM system uses such policies during ingest in order to define the desired handling of ingested product data. Policies are needed because engineering projects differ significantly regarding the kind of product, market and country. For example, if the collection of ingested product data consists of geometric, logical and physical design a preservation policy is able to specify that legal demands allow the deletion of archived physical designs after an elapsed amount of time. Preservation policies should guarantee that a preservation system is self-sustaining and that the archived content remains in a usable state.

### PLM repository

The PLM repository stores the native product data and is the operational database for the core PLM system. It is possible that the PLM repository references the content of the preservation system. For example, if parts of a design move into the preservation system, then the PLM repository can store a unique reference to the archived portion of the design and remove the archived product design from the PLM repository. If this design is accessed later, the PLM system will retrieve the design from the preservation system. If the archived data is migrated then references must be kept in a valid state. References from the preservation system to the PLM repository may not exist since the preservation system must be independent from systems that use the preservation functionality.

### Summary

Since the architecture was derived from requirements it is worth to verify if the key aspects of the architecture are a good match to the given requirements.

**General:** The preservation system is modular and has a service interface that allows integrating the system in all phases of the PLM process.

**Data ingest:** During pre-ingest, relevant meta-data (e.g. process history) is collected and might be transformed into vendor-neutral formats before ingest. Also, during pre-ingest the data can be validated for completeness. Due to the parallel usage of a preservation system and a PLM repository both native and transformed data are kept.

**Data access:** During post-access the data is validated for completeness. The service interface of the preservation system allows to search via metadata. Intellectual property rights are protected by the preservation system and it controls the access to parts of the product design.

**Data preservation planning:** The preservation system migrates the archived data whenever it is needed and during pre-ingest the preservation-enabled PLM systems collect all relevant product design data.

### Conclusion and outlook

Based on PLM system characteristics we have described extensions that are needed for integration of preservation functionality into PLM workflows. We also have looked at requirements for a preservation system based on the needs of the designated community in the engineering industry. One of the major requirements is an easy integration of digital preservation processes and PLM workflows by using configurable modular solutions. This requirement is met by a PLM system architecture that collaborates with the functionality of a SHAMAN based preservation system while keeping the possibility of executing the regular PLM processes. Further investigations have to specify the service interface in more detail. The consequences of distributed archives resulting from global cross-company collaborations in the engineering industry have to be reflected. It has to be investigated which relevant metadata in PLM processes exists, how this metadata can be captured, archived and preserved. Future research will also tackle the problem of maintaining dependencies to external taxonomies that are used in the engineering industry. The problem of maintaining version management metadata has to be treated since currently such version metadata is held in the PLM system. If version information should be accessible by other PLM systems, version metadata has also to be archived and maintained in a preservation system.

### Acknowledgements

This paper is supported by the European Union in the 7th Framework within the IP SHAMAN.

### References

A. Ball, M. Patel, L. Ding (2008) – “Towards a Curation and Preservation Architecture for CAD Engineering Models” – In proceedings of 5th International Conference on Preservation of Digital Objects (iPRES 2008).

H. Brocks, A. Kranstedt, G. Jäschke, M. Hemmje (2009) – “Modeling Context for Digital Preservation”. Technical Report SHAMAN.

J. Brunsmann, W. Wilkes, (2009), "State-of-the-art of long-term archiving in product lifecycle management", submitted for publication.

CCSDS, 2002. ‘Reference model for an Open Archival Information System (OAIS).’ Blue Book, Consultative Committee for Space Data Systems. Also published as ISO 14721:2003.  
<http://www.ccsds.org/documents/650x0b1.pdf>

D. Heutelbeck, J. Brunsmann, W. Wilkes, A. Hundsdörfer (2009) – „Motivations and Challenges for Digital Preservation in Design and Engineering“. Proceedings of First International Workshop on Innovation in Digital Preservation” (InDP 2009).

J. Lubell, S. Rachuri, M. Mani, E. Subrahmanian (2008) – “Sustaining Engineering Informatics: Towards Methods and Metrics for Digital Curation”. The International journal of Digital Curation Issue 2, Volume 3, pages 59-73. The SHAMAN Project (2009) – “SHAMAN Homepage”. <http://shaman-ip.eu/>

SHAMAN, (2008) - Deliverable 1.1, Survey of users and providers in Europe and SHAMAN usage scenarios.