

UCSF

UC San Francisco Previously Published Works

Title

Metastatic solid tumors to the jaw and oral soft tissue: A retrospective clinical analysis of 44 patients from a single institution

Permalink

<https://escholarship.org/uc/item/9tz022q2>

Journal

Journal of Cranio-Maxillofacial Surgery, 44(8)

ISSN

1010-5182

Authors

Owosho, Adepitan A
Xu, Bin
Kadempour, Arvin
[et al.](#)

Publication Date

2016-08-01

DOI

10.1016/j.jcms.2016.05.013

Peer reviewed



Published in final edited form as:

J Craniomaxillofac Surg. 2016 August ; 44(8): 1047–1053. doi:10.1016/j.jcms.2016.05.013.

Metastatic solid tumors to the jaw and oral soft tissue: A retrospective clinical analysis of 44 patients from a single institution

Adepitan A. Owosho, B.Ch.D¹ [Dental Oncology Research Fellow], Bin Xu, MD, PhD² [Clinical Fellow], Arvin Kadempour, DDS³ [Fellow], SaeHee K. Yom, DDS, MPH⁴ [Assistant Attending], Joseph Randazzo, DDS⁴ [Assistant Attending], Ronald A. Ghossein, MD⁵ [Attending], Joseph M. Huryn, DDS⁶ [Chief], and Cherry L. Estilo, DMD^{7,*} [Attending]

¹Department of Surgery, Memorial Sloan Kettering Cancer Center, New York.

²Head and Neck/Endocrine Pathology, Department of Pathology, Memorial Sloan Kettering Cancer Center, New York.

³Dental Service, Department of Surgery, Memorial Sloan Kettering Cancer Center, New York.

⁴Dental Service, Department of Surgery, Memorial Sloan Kettering Cancer Center, New York.

⁵Department of Pathology, Memorial Sloan Kettering Cancer Center, New York.

⁶Dental Service, Department of Surgery, Memorial Sloan Kettering Cancer Center, New York.

⁷Dental Service, Department of Surgery, Memorial Sloan Kettering Cancer Center, New York.

Summary

Purpose—Metastatic solid tumors to the oral cavity are rare, frequently indicative of an end-stage disease process, and associated with poor survival rates. We performed a 20-year retrospective clinical analysis of our institution’s cases of solid metastases to the oral cavity, and investigated these patients’ clinical outcomes.

Material and Methods—A retrospective study of patients with metastatic solid tumors to the oral cavity over a 20-year period (October 1996 to September 2015) was conducted at Memorial Sloan Kettering Cancer Center. Patients were selected if they had a histopathologically confirmed diagnosis. Demographic, pathologic, and clinical information were reviewed to identify patient outcomes.

Results—A total of 44 patients with metastatic non-melanocytic non-hematopoietic tumor to the oral cavity were identified: 24 males and 20 females (39 adults and 5 children) with a mean age of

*To whom correspondence should be addressed. estiloc@mskcc.org, **Telephone: 212-639-7644, Address:** Dental Service, Department of Surgery, Memorial Sloan Kettering Cancer Center, New York, NY 10065.

Publisher's Disclaimer: This is a PDF file of an unedited manuscript that has been accepted for publication. As a service to our customers we are providing this early version of the manuscript. The manuscript will undergo copyediting, typesetting, and review of the resulting proof before it is published in its final citable form. Please note that during the production process errors may be discovered which could affect the content, and all legal disclaimers that apply to the journal pertain.

Disclosure: All authors declare that there are no financial conflicts associated with this study and that the funding source has no role in conceiving and performing the study.

54.3 years. In all, 24 cases involved the jaw and 20 cases involved the oral soft tissue. Eight patients (18.2%) had oral cavity metastases as the first indication of an occult malignancy. In adult patients, the common primary sites were the lungs (n = 9, 20%), kidney (n = 7, 16%), breast (n = 5, 11%), and colon (n = 4, 9%); and in pediatric patients the adrenal gland (3/5) was the most common site. Of the adult patients, 33 (84.6%) died of disease. From the time of metastasis diagnosis, patients with jaw metastases had a median and mean survival of 12 months and 27.7 months, respectively. In comparison, patients with oral soft tissue metastases had a median survival time of 5 months, and mean of 8 months. One pediatric patient (20%) died of disease 8 months after metastasis diagnosis.

Conclusion—Metastatic solid tumors to the oral cavity can be the first sign of a malignancy. Pediatric patients with oral cavity metastases have a better prognosis compared to adult patients. In this series, adults with oral soft tissue involvement had shorter survival times compared to patients with jaw involvement.

INTRODUCTION

Metastatic solid tumors to the oral cavity are rare. Involvement of the jaw can be considered more common than involvement of oral soft tissue (Hirshberg et al., 2008; Summerlin, 1994). Metastases to the oral cavity can arise from any part of the body, but tumors of epithelial origin (carcinoma) occur more frequently (D'Silva et al., 2006; Hirshberg et al., 2008; Bodner et al., 2006; Antunes and Antunes, 2008). The common primary sites of metastatic oral cavity tumors are the breast in females and lung in males (Hirshberg et al., 2008; Allon et al., 2014). Metastatic dissemination to the oral cavity is highly indicative of an end-stage disease process, with reported survival time after oral metastases diagnosis at 3.7 to 8.25 months (van der Waal et al., 2003; Hirshberg et al., 2008; Murillo et al., 2013; Allon et al., 2014). Most patients who present with metastases to the oral cavity have already been diagnosed with primary tumors; however, in 22% to 25% of cases, oral cavity metastasis is the first manifestation of the disease (Hirshberg et al., 2008; Zachariades, 1989).

Metastatic disease involving the mandible, particularly the posterior region, is more common than the maxilla, whereas the gingiva is the most frequently involved oral soft tissue (Hirshberg et al., 2008; Hirshberg et al., 1994; Allon et al., 2014; Hirshberg et al., 1993; Zachariades, 1989).

The clinical presentation of metastatic tumors to the oral cavity range from jaw pain, exophytic lesion (either as a swelling or mass that may be ulcerated), paresthesia, and numbness, as well as misleading presentations such as toothache, dentoalveolar swelling, and loose tooth. The latter signs and symptoms can lead clinicians to consider an odontogenic disease process (D'Silva et al., 2006; Murillo et al., 2013; McClure et al., 2013).

Due to the rarity of metastatic tumors to the oral cavity and their often innocuous presentation, clinical and histopathologic diagnosis may be challenging (D'Silva et al., 2006; Hirshberg et al., 2014; Sauerborn et al., 2011). In this retrospective study, we describe a series of patients with metastatic tumors to the oral cavity and investigate the clinical outcomes of these patients.

MATERIAL AND METHODS

The study was approved by the Memorial Sloan Kettering Cancer Center (MSKCC) Institutional Review Board. A retrospective patient record review during a 20-year period (October 1996 to September 2015) was conducted for the identification of patients with metastatic tumors to the oral cavity. Patients with histopathologically confirmed diagnosis were included in the study. The following keywords were searched from our pathology electronic records: metastatic; jaw; jaw bone; mandible; maxilla; gingiva; gingival mucosa; alveolar mucosa; buccal mucosa; cheek mucosa; labial mucosa; palate; palatal mucosa; tongue; floor of mouth. Patients with melanoma, myeloma, lymphoma, and leukemia involving the jaw were excluded from this study. Patients with a clinical diagnosis of a jaw metastasis without histopathologic diagnosis were also excluded. The following clinical information was reviewed: sex, age at diagnosis, site of primary tumor, site of metastatic disease, vital status, histopathologic diagnosis, time duration from oral cavity metastasis diagnosis to patient's death, clinical presentation of metastases, list of positive immunohistochemical (IHC) stains in the biopsied specimen from the oral cavity, and therapy instituted.

RESULTS

Based on the inclusion criteria, 44 patients were histopathologically identified as having metastatic tumor to the oral cavity. There were 24 males and 20 females with a mean age of 54.3 years (range, 7 months to 85 years). A total of 39 (88.6%) adult patients and 5 (11.4%) pediatric patients made up this series. In all, 22 (50%) cases involved the mandible (20 cases in the posterior region, including 4 cases in the ramus and 2 in the anterior region); 2 cases were in the maxilla, both in the anterior region; 11 (25%) cases involved the gingiva; 5 cases were in the buccal mucosa; 3 cases involved the tongue; and 3 cases involved the palatal mucosa. Two patients had 2 oral soft tissue involvements each, in 1 patient to the gingiva and palatal mucosa and in another patient to the gingiva and tongue. In adult patients, the primary sites were the lung (n = 9), kidney (n = 7), breast (n = 5), colon (n = 4), prostate (n = 2), liver (n = 1), pleura (n = 1), thyroid (n = 1), testis (n = 1), soft tissue buttock (n = 1), stomach (n = 1), submandibular (n = 1), uterus (n = 1), adrenal gland (n = 1), ureter (n = 1), and pancreaticobiliary (n = 1), and in 1 patient the primary site was unknown. In the pediatric patients, the primary sites were the adrenal gland (n = 3), eye (n = 1), and mediastinum (n = 1). Eight (18.2%) patients (cases 1, 3, 5, 20, 22, 25, 28, and 37) in this study had oral metastases as the first indication of an occult malignancy (sites: uterus, lung [n = 2], pancreaticobiliary, colorectal, ureter, kidney, and adrenal gland). In the adult patients, 33 (84.6%) of 39 patients died of their disease and 6 patients were alive at the time of this study. In the pediatric patients, 1 patient died of disease and 4 patients were alive at the time of this study. Table 1 is a summary of the analyzed patient information. Carcinomas made up the majority (33 of 44; 75%) of the histologic subtypes in the study group. The clinical presentation of the metastases to the jaw varied and included jaw pain, jaw swelling/mass, lower lip and chin numbness, toothache, tooth abscess, non-healing tooth infection, and tooth exfoliation. The radiographic presentations of the jaw metastases were that of an expansile lytic lesion with ill-defined margins and cortical disruption in most cases (Figures 1 and 2). However, the clinical presentation of the metastases to the oral soft tissue

represented mainly masses and swellings of the gingiva, buccal mucosa, and tongue (Figure 3). Other clinical symptoms and signs for the oral cavity metastases were pain, restriction in mouth opening, and difficulty with mastication.

All cases were histopathologically evaluated, and 1 or more ancillary/IHC stains was performed in 29 cases in order to arrive at an accurate diagnosis: e.g., cytokeratins, thyroid transcription factor-1, estrogen receptor, progesterone receptor, prostate-specific antigen, vimentin, smooth muscle actin, epithelial membrane antigen, CDX2, HepPar-1, and neuroendocrine markers (chromogranin and synaptophysin) (Figure 4). Oral cavity metastases were managed with radiotherapy, surgical resection, chemotherapy, or a combination of treatment modalities. In the adult patients, the median and mean time from the diagnoses of jaw metastases to the patient's death were 12 months, and 27.7 months, respectively (range, 2 to 142 months), whereas the median and mean time from the diagnoses of oral soft tissue metastases to the patient's death were 5 months and 8 months, respectively (range: 5 days to 34 months). At the time of the review, 6 adult patients were alive (2 to 93 months) post-metastasis diagnosis. One pediatric patient died 8 months after the jaw metastasis diagnosis. The remaining 4 pediatric patients were alive (85 to 233 months) after the metastasis diagnosis. The summary of the histologic subtype, duration of oral cavity metastasis diagnosis to patient's death, clinical presentations, positive immunohistochemical stains, and therapy instituted in the management of oral cavity metastases are presented in Table 2.

DISCUSSION

In this study, we describe a series of patients with metastatic tumors to the oral cavity and investigate their clinical outcomes. The gender distribution (male predilection) and site predilection (the majority of jaw cases involved the mandibular posterior region and soft tissue cases involved the gingiva) are similar to previous literature reviews (Hirshberg et al., 2008; Allon et al., 2014). In the adult population, the most common primary sites were the lung, kidney, breast, and colon. Similar primary site distributions have been reported in the literature (Hirshberg et al., 2008; D'Silva et al., 2006; Allon et al., 2014; Zachariades, 1989). In the pediatric patients, the most common primary site was the adrenal gland. Certain primary tumor sites have a predilection for either the jaw or oral soft tissue; for example the lung is the most common primary tumor site to metastasize to the oral soft tissue, whereas the breast has a predilection for the jaw. Other primary tumor sites such as adrenal, prostate, and eye have a predilection for the jaw and are rarely found in the oral soft tissue (Mirra, 1989). Of the adult patients, 84.6% died of disease, and of the pediatric patients, 80% are still alive at the time of this study.

Although most oral cavity metastases are found in the presence of a widespread disease process, oral cavity metastasis might be the first manifestation of the disease in 22% to 25% of patients (Hirshberg et al., 2008; Pesis et al., 2014; Zachariades, 1989). In our study, 8 (18.2%) patients first presented with metastatic oral symptoms. The pathogenesis of oral metastases is unclear. Metastatic deposit can arise from secondary site, such as the lungs, or directly from the primary organ site, bypassing the lungs, via the valveless vertebral venous plexus (Batson, 1940; Cumming et al., 1990). Also, the role of the presence of teeth and

chronic inflammation in gingival metastasis as a contributing factor to the draw of metastatic tumor cells has been suggested. In this study, 10 of 11 patients with gingival metastases had teeth or implants at the gingival site (Allon et al., 2014).

Due to the rarity and sometimes ambiguous presentation of these lesions, they can be a diagnostic challenge, with most soft tissue cases occurring on the gingiva (Hirshberg et al., 1993; Sauerborn et al., 2011). The clinical differential diagnosis could include pyogenic granuloma, peripheral giant cell granuloma, peripheral ossify fibroma, epulis, and vascular anomaly. The importance of histopathologic evaluation cannot be overstated. A treatment-resistant dental pathosis or an obvious jaw pathosis should be biopsied for histopathologic evaluation. The pathologist must determine the lineage and tumor type of the biopsied tissue to identify potentially curable lesions, for example, hormone-sensitive and chemo-sensitive tumors. A history of known primary tumor can be helpful in this process by morphologically comparing the histopathologic slides. If there is no cancer history, the use of ancillary/IHC stains is highly recommended to determine the lineage and subtype of the tumor. The following stains are very useful but not exhaustive: cytokeratins 7 and 20, thyroid transcription factor-1, estrogen receptor, progesterone receptor, mammaglobin, CDX2, renal cell carcinoma, carbonic anhydrase IX, CD10, prostate-specific antigen, and HepPar-1. In our study, all of the reported metastases to the oral cavity were biopsied and histopathologically evaluated, and IHC stains were applied when warranted. After a diagnosis is rendered, body scans/imaging should be performed to evaluate for the primary tumor site and other metastatic site(s). This study focused on patients histologically evaluated. The number of patients who presented with oral metastases is suspected to be more than what we reported in this study, as patients radiographically or clinically diagnosed but not biopsied before they died of disease were excluded.

Although management of this condition varies, the use of surgical resections alone in cases of jaw-only metastasis has been found to improve prognosis (Nakamura et al., 2001). In cases with multiple metastatic recurrent prostate cancers, the use of surgical resection and radiotherapy show promise (Ost et al., 2015). Meanwhile, some cases of metastatic neuroblastoma improve with chemotherapy (Bhattacharyya et al., 1999). In our series, 2 patients diagnosed with metastatic neuroblastoma to the jaw were successfully managed with chemotherapy.

The hallmark of malignancy is metastasis. Epithelial–mesenchymal transition (EMT) has been proposed as an essential mechanism by which solid cancer cells undergo invasion and metastasis (Thiery, 2002). The transition of epithelial to mesenchymal cell phenotype allow for cell motility, loss of adherens junctions, loss of lineage, and dedifferentiation (Thiery, 2002). Pro-EMT transcription factors are ZEB1 (zinc finger E-box binding homeobox 1), SLUG, SNAIL, and TWIST (Boutet et al., 2007; Peinado et al., 2007; Yang et al., 2004). These transcription factors cause a reduction in epithelial cadherin, a transmembrane protein that maintains epithelial integrity responsible for anchorage of cells to one another (Cano et al., 2000; Herranz et al., 2008). These factors also regulate angiogenesis, which facilitates tumor invasion and metastasis.

The use of anti-angiogenic agents that target angiogenesis holds significant promise in the management of malignancies. Anti-angiogenic medications such as bevacizumab and sunitinib have been approved by the U.S. Food and Drug Administration. Bevacizumab, an anti-vascular endothelial growth factor (anti-VEGF) has been approved for the management of metastatic colorectal cancer, non-small cell lung cancer, and metastatic renal cell carcinoma. Sunitinib (anti-VEGF receptor) is a multi-targeted receptor tyrosine kinase inhibitor that has been also approved for the management of renal cell carcinoma, Imatinib-resistant gastrointestinal stromal tumor, and pancreatic neuroendocrine tumors. These medications work by stimulation of endothelial cell apoptosis, inhibition of neovascularization, prevention of tumor-mediated vasodilation, and prevention of recruitment of endothelial progenitor cells (Ellis and Hicklin, 2008).

Recently, the use of personalized therapy in the management of cancer patients is now gaining ground by the use of genome sequencing. Next-generation sequencing allows hundreds of genetic abnormalities to be analyzed very quickly and with great precision. This new technology allows the oncologist to determine whether the patient's cancer has a clinically useful mutation that makes the cancer susceptible to certain drugs, clinical trials, or individualistic targeted therapy. However, its role in clinical practice is still limited (Damodaran et al., 2015; Hyman et al., 2015).

CONCLUSION

Metastatic non-melanocytic solid tumors to the oral cavity are rare and can be the first clinical sign of a late-stage malignancy. Patient outcome after the diagnosis of metastasis to the oral cavity is poor and may be attributed to widespread disease at the time of diagnosis. Pediatric patients with oral cavity metastases have a better prognosis compared to adult patients. Metastases to the oral soft tissue (mean survival time of 8 months after metastasis diagnosis) carries a graver consequence compared to metastases to the jaw. This observation is supported by the existing literature; the average survival time after metastases to the oral soft tissue has been placed at 3.7 months, whereas the average survival time after metastases to the oral cavity is 7 months (Allon et al., 2014; Hirshberg et al., 2008).

Acknowledgments

This study was supported in part through the NIH/NCI Cancer Center Support Grant P30 CA008748.

REFERENCES

- Allon I, Pessing A, Kaplan I, Allon DM, Hirshberg A. Metastatic tumors to the gingiva and the presence of teeth as a contributing factor: a literature analysis. *J Periodontol*. 2014; 85(1):132–139. [PubMed: 23646853]
- Antunes AA, Antunes AP. Gnathic bone metastasis: a retrospective study of 10 cases. *Braz J Otorhinolaryngol*. 2008; 74(4):561–565. [PubMed: 18852982]
- Batson OV. The function of the vertebral veins and their role in the spread of metastases. *Ann Surg*. 1940; 112(1):138–149. [PubMed: 17857618]
- Bhattacharyya I, Williamson A, Cohen DM, Bever JL. Metastatic neuroblastoma with ganglioneuromatous differentiation and mandibular involvement. *Oral Surg Oral Med Oral Pathol Oral Radiol Endod*. 1999; 88(5):586–592. [PubMed: 10556754]

- Bodner L, Sion-Vardy N, Geffen DB, Nash M. Metastatic tumors to the jaws: a report of eight new cases. *Med Oral Patol Oral Cir Bucal*. 2006; 11(2):E132–E135. [PubMed: 16505790]
- Boutet A, Esteban MA, Maxwell PH, Nieto MA. Reactivation of Snail genes in renal fibrosis and carcinomas: a process of reversed embryogenesis? *Cell Cycle*. 2007; 6(6):638–642. [PubMed: 17374993]
- Cano A, Perez-Moreno MA, Rodrigo I, Locascio A, Blanco MJ, del Barrio MG, et al. The transcription factor snail controls epithelial-mesenchymal transitions by repressing E-cadherin expression. *Nat Cell Biol*. 2000; 2(2):76–83. [PubMed: 10655586]
- Cumming J, Hacking N, Fairhurst J, Ackery D, Jenkins JD. Distribution of bony metastases in prostatic carcinoma. *Br J Urol*. 1990; 66(4):411–414. [PubMed: 2224435]
- D'Silva NJ, Summerlin DJ, Cordell KG, Abdelsayed RA, Tomich CE, Hanks CT, et al. Metastatic tumors in the jaws: a retrospective study of 114 cases. *J Am Dent Assoc*. 2006; 137(12):1667–1672. [PubMed: 17138711]
- Damodaran S, Berger MF, Roychowdhury S. Clinical tumor sequencing: opportunities and challenges for precision cancer medicine. *Am Soc Clin Oncol Educ Book*. 2015:e175–e182. [PubMed: 25993170]
- Ellis LM, Hicklin DJ. VEGF-targeted therapy: mechanisms of anti-tumour activity. *Nat Rev Cancer*. 2008; 8(8):579–591. [PubMed: 18596824]
- Herranz N, Pasini D, Diaz VM, Franci C, Gutierrez A, Dave N, et al. Polycomb complex 2 is required for E-cadherin repression by the Snail1 transcription factor. *Mol Cell Biol*. 2008; 28(15):4772–4781. [PubMed: 18519590]
- Hirshberg A, Berger R, Allon I, Kaplan I. Metastatic tumors to the jaws and mouth. *Head Neck Pathol*. 2014; 8(4):463–474. [PubMed: 25409855]
- Hirshberg A, Leibovich P, Buchner A. Metastases to the oral mucosa: analysis of 157 cases. *J Oral Pathol Med*. 1993; 22(9):385–390. [PubMed: 8301602]
- Hirshberg A, Leibovich P, Buchner A. Metastatic tumors to the jawbones: analysis of 390 cases. *J Oral Pathol Med*. 1994; 23(8):337–341. [PubMed: 7815371]
- Hirshberg A, Shnaiderman-Shapiro A, Kaplan I, Berger R. Metastatic tumours to the oral cavity—pathogenesis and analysis of 673 cases. *Oral Oncol*. 2008; 44(8):743–752. [PubMed: 18061527]
- Hyman DM, Solit DB, Arcila ME, Cheng DT, Sabbatini P, Baselga J, et al. Precision medicine at Memorial Sloan Kettering Cancer Center: clinical next-generation sequencing enabling next-generation targeted therapy trials. *Drug Discov Today*. 2015; 20(12):1422–1428. [PubMed: 26320725]
- McClure SA, Movahed R, Salama A, Ord RA. Maxillofacial metastases: a retrospective review of one institution's 15-year experience. *J Oral Maxillofac Surg*. 2013; 71(1):178–188. [PubMed: 22705221]
- Mirra, JM. Bone Tumors. Lea & Febiger: 1989. Metastasis; p. 1495-1517.
- Murillo J, Bagan JV, Hens E, Diaz JM, Leopoldo M. Tumors metastasizing to the oral cavity: a study of 16 cases. *J Oral Maxillofac Surg*. 2013; 71(9):1545–1551. [PubMed: 23800673]
- Nakamura T, Ishimaru J, Mizui T, Kobayashi A, Toida M, Makita H, et al. Osteosarcoma metastatic to the mandible: a case report. *Oral Surg Oral Med Oral Pathol Oral Radiol Endod*. 2001; 91(4):452–454. [PubMed: 11312462]
- Ost P, Bossi A, Decaestecker K, De Meerleer G, Giannarini G, Karnes RJ, et al. Metastasis-directed therapy of regional and distant recurrences after curative treatment of prostate cancer: a systematic review of the literature. *Eur Urol*. 2015; 67(5):852–863. [PubMed: 25240974]
- Peinado H, Olmeda D, Cano A. Snail, Zeb and bHLH factors in tumour progression: an alliance against the epithelial phenotype? *Nat Rev Cancer*. 2007; 7(6):415–428. [PubMed: 17508028]
- Pesis M, Taicher S, Greenberg G, Hirshberg A. Metastasis to the jaws as a first manifestation of hepatocellular carcinoma: report of a case and analysis of 41 cases. *J Craniomaxillofac Surg*. 2014; 42(8):1997–2001. [PubMed: 25441863]
- Sauerborn D, Vidakovic B, Baranovic M, Mahovne I, Danic P, Danic D. Gastric adenocarcinoma metastases to the alveolar mucosa of the mandible: a case report and review of the literature. *J Craniomaxillofac Surg*. 2011; 39(8):645–648. [PubMed: 21112790]

- Summerlin, DJ., Tomich, C., Abdelsayed, R. American Academy of Oral Pathology Annual Meeting. Santa Fe, New Mexico: 1994. Metastatic disease to the jaws.
- Thiery JP. Epithelial-mesenchymal transitions in tumour progression. *Nat Rev Cancer*. 2002; 2(6):442–454. [PubMed: 12189386]
- van der Waal RI, Buter J, van der Waal I. Oral metastases: report of 24 cases. *Br J Oral Maxillofac Surg*. 2003; 41(1):3–6. [PubMed: 12576032]
- Yang J, Mani SA, Donaher JL, Ramaswamy S, Itzykson RA, Come C, et al. Twist, a master regulator of morphogenesis, plays an essential role in tumor metastasis. *Cell*. 2004; 117(7):927–939. [PubMed: 15210113]
- Zachariades N. Neoplasms metastatic to the mouth, jaws and surrounding tissues. *J Craniomaxillofac Surg*. 1989; 17(6):283–290. [PubMed: 2671045]



Figure 1. Computed tomogram: axial view of a patient (case 1) with metastatic high-grade pleomorphic sarcoma to the mandible from the uterus first identified in the mandible, which demonstrates a destructive, erosive lytic lesion.



Figure 2. Computed tomogram: axial view of a patient (case 37) with metastatic neuroblastoma to the mandibular ramus from the adrenal gland first identified in the mandible, which demonstrates a destructive, erosive lytic lesion.

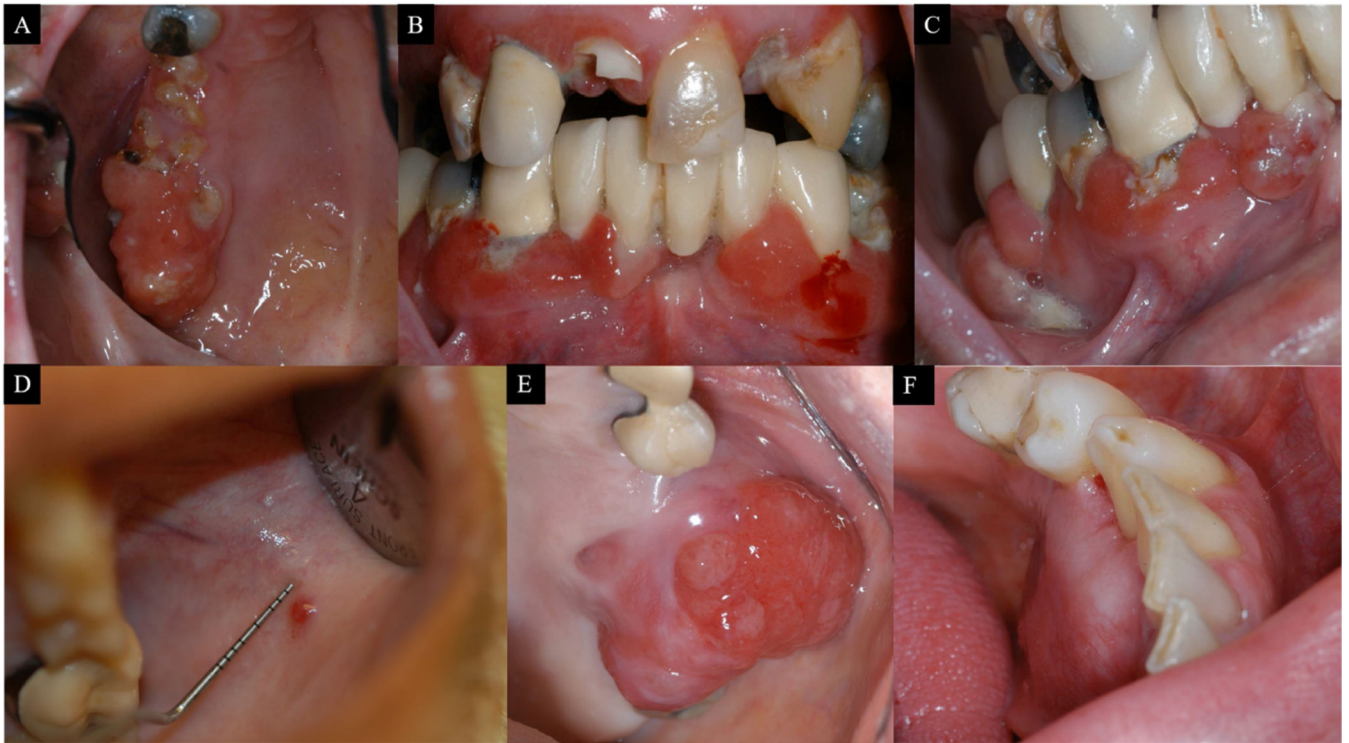


Figure 3. Clinical pictures of metastatic lung undifferentiated carcinoma to multiple mandibular and maxillary gingival sites (A—C). Case 9, metastatic renal cell carcinoma involving buccal mucosa (D); case 32, metastatic lung adenocarcinoma involving maxillary gingiva (E); case 11, metastatic colon adenocarcinoma involving mandibular gingiva (F); case 24

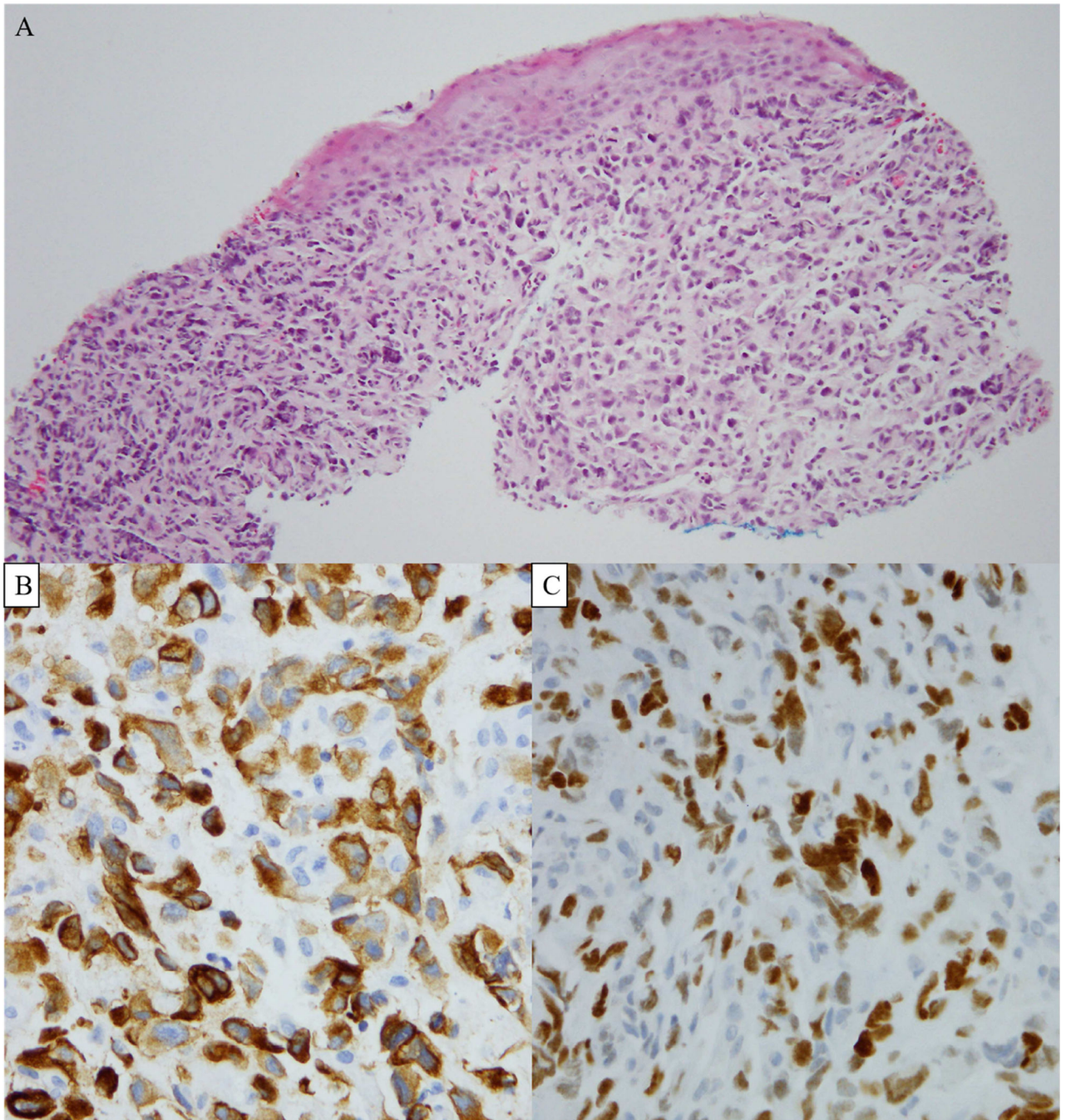


Figure 4. Photomicrographs of the biopsied metastatic lung undifferentiated carcinoma (hematoxylin and eosin, $\times 200$) (A). Cytokeratin 7 demonstrating a cytoplasmic staining pattern (X400) (B), and TTF-1 demonstrating a nuclear staining pattern (X400) (C); case 9.

Table 1

Demographic data of patients with metastatic solid tumors to the oral cavity

Case no.	Sex	Age (y)	Primary site	Metastatic site	Vital status (DOD/alive)
1	F	50	Uterus	Posterior mandible	DOD
2	M	69	Lung	Posterior mandible	DOD
3	M	70	Lung	Posterior mandible	DOD
4	F	52	Lung	Anterior maxilla	DOD
5	M	58	Lung	Posterior mandible	DOD
6	M	69	Pleura (lung)	Tongue	DOD
7	F	54	Lung	Buccal mucosa	DOD
8	M	62	Lung	Maxillary gingiva and palatal mucosa	DOD
9	F	65	Lung	Mandibular and maxillary gingiva	DOD
10	M	40	Lung	Palatal mucosa	DOD
11	F	65	Lung	Maxillary gingiva	DOD
12	F	76	Breast	Mandibular ramus	DOD
13	F	68	Breast	Posterior mandible	Alive
14	F	73	Breast	Mandibular ramus	DOD
15	F	64	Breast	Mandibular gingiva	Alive
16	F	69	Breast	Tongue	DOD
17	M	79	Prostate	Posterior mandible	DOD
18	M	63	Prostate	Posterior mandible	DOD
19	M	71	Liver	Posterior mandible	DOD
20	M	85	Pancreaticobiliary	Posterior mandible	DOD
21	F	77	Colon	Posterior mandible	DOD
22	M	74	Colorectal	Mandibular ramus	DOD
23	F	43	Colon	Anterior maxilla	DOD
24	M	59	Colon	Mandibular gingiva	Alive
25	F	64	Ureter (renal pelvis)	Posterior mandible	DOD
26	F	61	Kidney	Anterior mandible	DOD

Case no.	Sex	Age (y)	Primary site	Metastatic site	Vital status (DOD/alive)
27	F	63	Kidney	Anterior-posterior mandible	DOD
28	F	18	Kidney	Mandibular gingiva	Alive
29	M	75	Kidney	Buccal mucosa	DOD
30	M	70	Kidney	Buccal mucosa	DOD
31	M	59	Kidney	Mandibular gingiva	DOD
32	M	66	Kidney	Buccal mucosa	Alive
33	M	21	Adrenal gland	Posterior mandible	Alive
34	M	5	Eye	Posterior mandible	DOD
35	F	9	Adrenal gland	Mandibular ramus	Alive
36	F	1.75	Adrenal gland	Posterior mandible	Alive
37	M	0.6	Adrenal gland	Posterior mandible	Alive
38	F	54	Thyroid	Mandibular gingiva	DOD
39	M	48	Buttock	Mandibular gingiva and tongue	DOD
40	M	35	Testis	Maxillary gingiva	DOD
41	M	60	Stomach	Maxillary gingiva	DOD
42	M	76	Submandibular gland	Palatal mucosa	DOD
43	M	44	Unknown	Buccal mucosa	DOD
44	F	3	Mediastinum	Anterior mandible	Alive

Abbreviations: DOD, dead of disease; F, female; M, male.

Table 2

Summary of the histologic subtype, duration from oral cavity metastasis diagnosis to patient's death, clinical presentations, therapy instituted in the management of oral cavity metastases, and positive immunohistochemical stains

Case no.	Histopathologic diagnosis	Duration from jaw/soft tissue metastases to DOD (mo)	Clinical presentation of jaw/soft tissue metastases	Management of metastatic jaw/soft tissue disease	Positive IHC stains
1	High-grade pleomorphic sarcoma	13	Buccogingival mass preventing chewing	RT	SMA, Vimentin
2	Non-small cell carcinoma	2	Expansile lesion	RT	Cytokeratin
3	Small cell carcinoma	9	Non-healing tooth infection	CT	ND
4	Poorly differentiated carcinoma	3	Lesion on the hard palate increased in size non-responsive to antibiotic	RT	TTF-1, CK7, AE1/3
5	Adenocarcinoma	11	Jaw pain attributed to toothache, tooth extracted and swelling developed	RT	CK7
6	Mesothelioma	34	Submucosal mass	CT	CK5/6, Calretinin
7	Poorly differentiated adenocarcinoma	0.16	Submucosal mass	CT	CK7, TTF-1, Napsin-A,
8	Undifferentiated carcinoma	2	Gingival swellings	CT	ND
9	Undifferentiated carcinoma	7	Swollen gingivae	CT	CK7, TTF-1
10	Poorly differentiated adenocarcinoma	14	Palatal mass after an extraction	CT	ND
11	Adenocarcinoma	5	Gingival mass	CT	CK7
12	Infiltrating ductal carcinoma	142	Numbness of lower lip, jaw pain, trismus	-	CK7, ER, PR
13	Adenocarcinoma	Alive, 93 mo after jaw metastases	Numbness of lower lip, trismus	RT	ER
14	Adenocarcinoma	21	Expansile lesion	CT	ND
15	Adenocarcinoma	Alive 35 mo after oral metastasis	Gingival mass	CT	CK7, ER
16	Poorly differentiated adenocarcinoma	8	Submucosal mass	RT	CK7
17	Adenocarcinoma	65	Numbness of lower lip,	S/RT	ND

Case no.	Histopathologic diagnosis	Duration from jaw/soft tissue metastases to DOD (mo)	Clinical presentation of jaw/soft tissue metastases	Management of metastatic jaw/soft tissue disease	Positive IHC stains
			expansile lesion		
18	Adenocarcinoma	10	Numbness of lower lip, lesion around tooth	-	PSA
19	Hepatocellular carcinoma	10	Tooth abscess, jaw pain	-	HepPar-1
20	Mucinous adenocarcinoma	11	Jaw numbness	RT	CK7, CK19, CA19-9
21	Adenocarcinoma	5	Chin numbness	RT	ND
22	Adenocarcinoma with signet-ring features	21	Jaw mass	RT	AEI/3, CK20, CDX2
23	Adenocarcinoma	21	Facial pain and nasal congestion	S/RT	CK20, CDX2
24	Adenocarcinoma	Alive 2 mo after oral metastasis	Gingival swelling	CT	ND
25	Transitional cell carcinoma	19	Teeth sensitivity, abscess, lip numbness, jaw pain and swelling	RT	CK, CEA
26	Renal cell carcinoma	12	Lip numbness and jaw mass	S	ND
27	Renal cell carcinoma	96	Jaw pain and jaw mass	RT	ND
28	Renal cell carcinoma	Alive 44 mo after oral metastasis	Oral pain and gingival swelling	S/CT	CK, Vimentin, CD10, EMA, PAX2, PAX8
29	Renal cell carcinoma	2	Submucosal mass	CT	ND
30	Renal cell carcinoma	19	Submucosal mass	S/RT	ND
31	Renal cell carcinoma	8	Bilobed mass extending from buccal to lingual gingiva	RT	ND
32	Renal cell carcinoma	Alive 4 mo after oral metastasis	Pink raised lesion	S/CT	PAX8, CD10, CA IX
33	Neuroblastoma	Alive, 21 mo after jaw metastases	Rapidly developing jaw mass	RT	ND
34	Retinoblastoma	8	Tooth exfoliated, Jaw pain and mass	CRT	NSE, p53, SYN, CD56
35	Neuroblastoma	Alive, 170 mo after jaw metastases	Jaw mass	S	ND
36	Neuroblastoma	Alive, 93 mo after jaw	Rapidly developing jaw	S	ND

Case no.	Histopathologic diagnosis	Duration from jaw/soft tissue metastases to DOD (mo)	Clinical presentation of jaw/soft tissue metastases	Management of metastatic jaw/soft tissue disease	Positive IHC stains
37	Neuroblastoma	Alive, 85 mo after jaw metastases	mass in 1 week Patient irritable attributed to teething, rapidly developing jaw mass	CT	SYN
38	Anaplastic thyroid carcinoma	0.5	Gingival mass	S	34BE12, A4A, focal Desmin
39	Leiomyosarcoma	1	Painless submucosal mass	CT	SMA, Vimentin
40	Germ cell tumor	3	Gingival swelling	S/RT	CK, Beta-HCG
41	Adenocarcinoma	5	Ulcerated lesion	CT	
42	Angiosarcoma	15	Palatal mass	RT	CD31, CD34
43	Adenocarcinoma with papillary features	2	Submucosal mass	CT	CK7, Mucinearmino
44	Neuroblastoma	Alive, 233 mo after jaw metastases	Jaw mass	CT	Chromogranin, NSE

Abbreviations: SMA, smooth muscle actin; CK, cytokeratins; TTF-1, thyroid transcription factor—1; ER, estrogen receptor; PR, progesterone receptor; PSA, prostate-specific antigen; NSE, neuron-specific enolase; EMA, epithelial membrane antigen; CA, carbonic anhydrase; ND, not done; DOD, dead of disease; RT, radiotherapy; S, surgical resection; CT, chemotherapy; CRT, chemoradiation therapy.