

# UCLA

## UCLA Previously Published Works

### Title

Correction: The IGF1 small dog haplotype is derived from Middle Eastern gray wolves

### Permalink

<https://escholarship.org/uc/item/9tf4k3k9>

### Journal

BMC Biology, 8(1)

### ISSN

1741-7007

### Authors

Gray, Melissa M  
Sutter, Nathan B  
Ostrander, Elaine A  
[et al.](#)

### Publication Date

2010-09-08

### DOI

<http://dx.doi.org/10.1186/1741-7007-8-118>

Peer reviewed

CORRECTION

Open Access

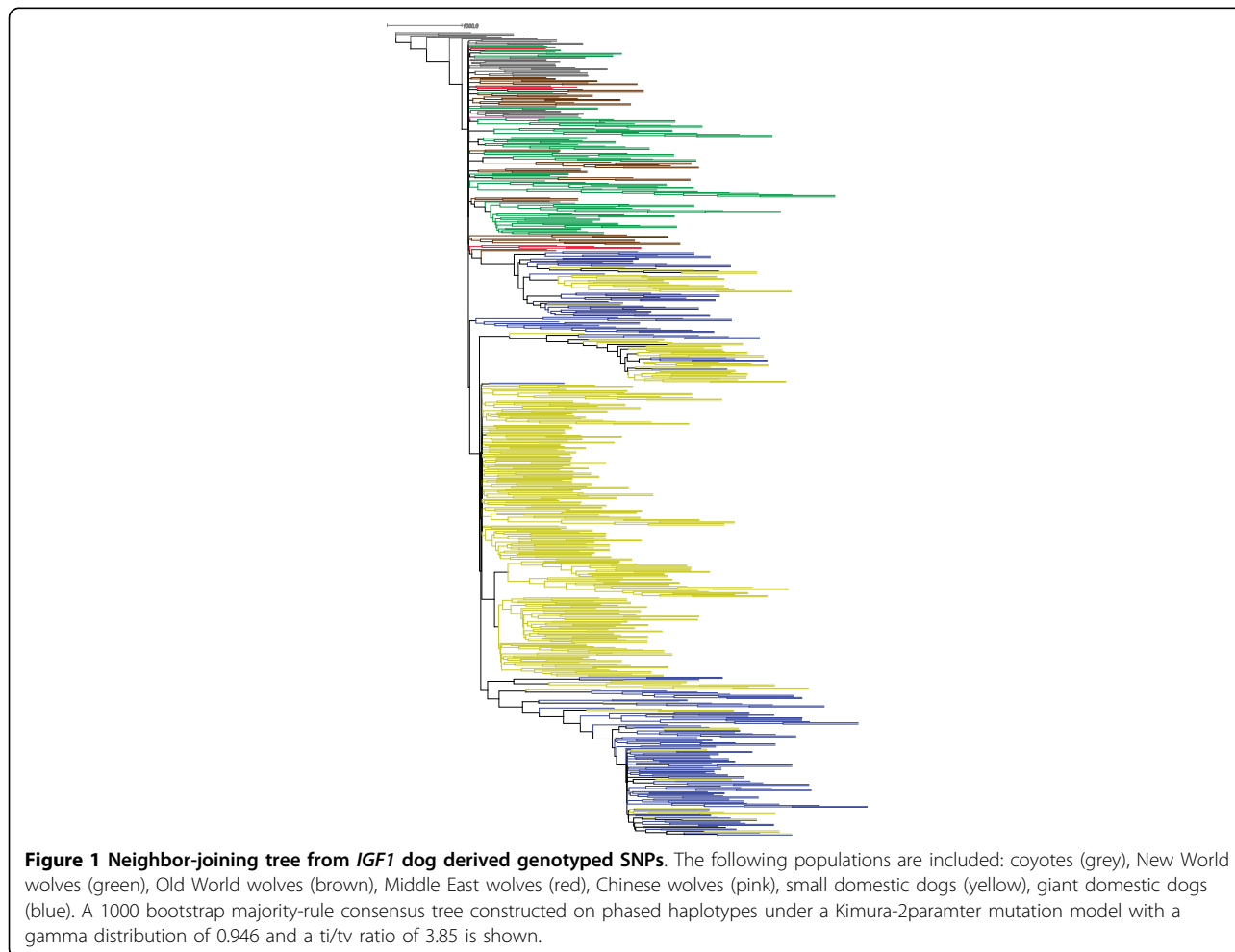
# The *IGF1* small dog haplotype is derived from Middle Eastern gray wolves

Melissa M Gray<sup>1,2\*</sup>, Nathan B Sutter<sup>3</sup>, Elaine A Ostrander<sup>4</sup>, Robert K Wayne<sup>1</sup>

## Correction

The authors note minor corrections to two figures which originally appeared in Gray et al. in 2010 [1]. In Figure S1, a Chinese grey wolf terminus was mislabeled

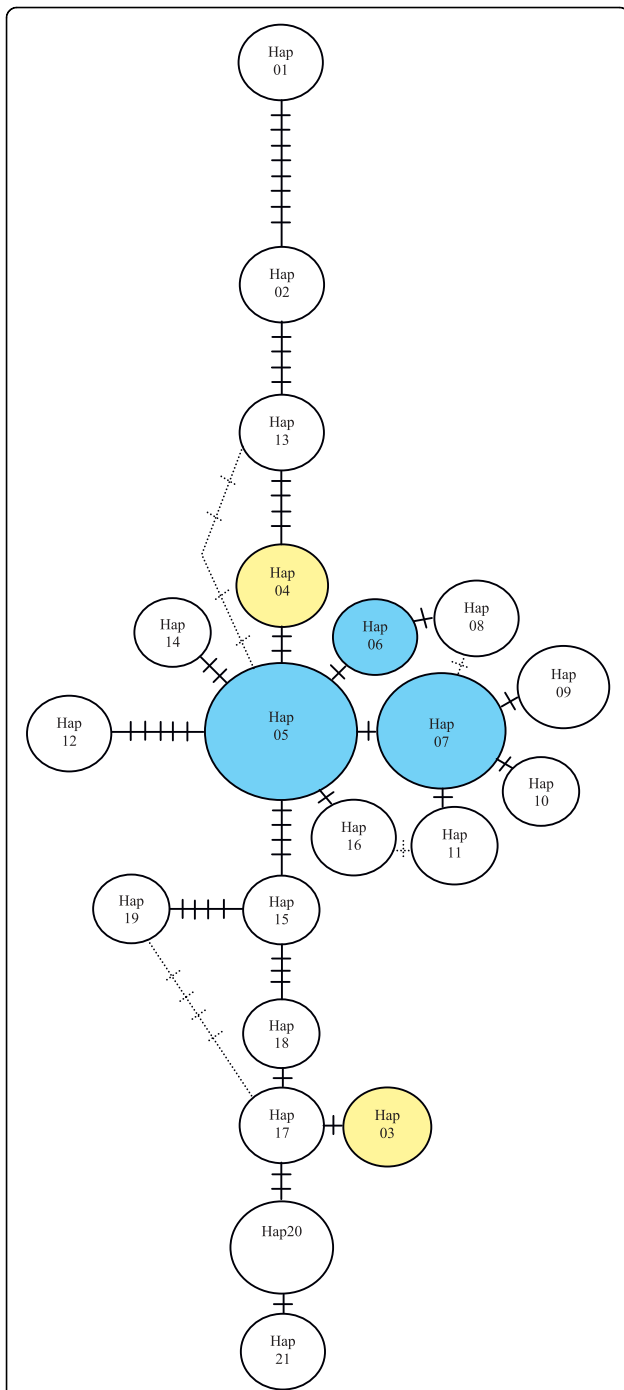
as an Old world grey wolf. In Figure S3, there should be two mutational steps between Hap14 and Hap05 instead of one. The corrected figures are presented below (Fig 1 (Figure S1 in [1]) & Fig 2 (Figure S3 in [1])). These



\* Correspondence: mgray9@ucla.edu

<sup>1</sup>Department of Ecology and Evolutionary Biology, University of California, Los Angeles, CA, USA

Full list of author information is available at the end of the article



**Figure 2 Minimum spanning network of 4881 bps of phased sequence.** See Figure 5 for specific breed and grey wolf haplotype labels. Node size correlates to the frequency of the haplotype across all samples. Hashes indicate the number of pairwise differences between haplotypes. Yellow nodes indicate the small dog *IGF1* haplotypes and the blue nodes indicate the large dog *IGF1* haplotypes. Dashed lines display alternative connections between haplotypes.

changes do not affect any of the conclusions presented in the original manuscript.

We apologize for any inconvenience caused by this error.

#### Author details

<sup>1</sup>Department of Ecology and Evolutionary Biology, University of California, Los Angeles, CA, USA. <sup>2</sup>Laboratory of Genetics, University of Wisconsin, Madison, WI, USA. <sup>3</sup>Department of Clinical Sciences, College of Veterinary Medicine, Cornell University, Ithaca, NY, USA. <sup>4</sup>Cancer Genetics Branch, National Human Genome Research Institute, National Institutes of Health, Bethesda, MD, USA.

Received: 7 September 2010 Accepted: 8 September 2010

Published: 8 September 2010

#### Reference

1. Gray MM, Sutter NB, Ostrander EA, Wayne RK: **The IGF1 small dog haplotype is derived from Middle Eastern grey wolves.** *BMC Biology* 2010, 8:16.

doi:10.1186/1741-7007-8-118

**Cite this article as:** Gray et al.: The *IGF1* small dog haplotype is derived from Middle Eastern grey wolves. *BMC Biology* 2010 8:118.