

UC Irvine

UC Irvine Previously Published Works

Title

Plasma Based Markers of [11C] PiB-PET Brain Amyloid Burden

Permalink

<https://escholarship.org/uc/item/9s835994>

Journal

PLOS ONE, 7(9)

ISSN

1932-6203

Authors

Kiddle, Steven John
Thambisetty, Madhav
Simmons, Andrew
[et al.](#)

Publication Date

2012

DOI

10.1371/journal.pone.0044260

Copyright Information

This work is made available under the terms of a Creative Commons Attribution License, available at <https://creativecommons.org/licenses/by/4.0/>

Peer reviewed

Plasma Based Markers of [¹¹C] PiB-PET Brain Amyloid Burden

Steven John Kiddle^{1,2*}, Madhav Thambisetty³, Andrew Simmons^{1,2}, Joanna Riddoch-Contreras², Abdul Hye², Eric Westman^{1,2}, Ian Pike⁴, Malcolm Ward⁴, Caroline Johnston^{1,2}, Michelle Katharine Lupton², Katie Lunnon², Hilka Soininen⁵, Iwona Kłoszewska⁶, Magda Tsolaki⁷, Bruno Vellas⁸, Patrizia Mecocci⁹, Simon Lovestone^{1,2}, Stephen Newhouse^{1,2,9}, Richard Dobson^{1,2,9*}, for the Alzheimers Disease Neuroimaging Initiative

1 National Institute of Health Research Biomedical Research Centre for Mental Health, South London and Maudsley National Health Service Foundation Trust, London, United Kingdom, **2** King's College London, Institute of Psychiatry, London, United Kingdom, **3** Laboratory of Behavioral Neuroscience, National Institute on Aging, Baltimore, Maryland, United States of America, **4** Proteome Sciences plc, Cobham, Surrey, United Kingdom, **5** School of Neurology, University of Eastern Finland and University Hospital of Kuopio, Kuopio, Finland, **6** Department of Old Age Psychiatry and Psychotic Disorders, Medical University of Lodz, Lodz, Poland, **7** 3rd Department of Neurology, "G. Papanicolaou" Hospital, Aristotle University of Thessaloniki, Thessaloniki, Greece, **8** Department of Geriatric Medicine, Grontopole de Toulouse, Toulouse University Hospital, Toulouse, France, **9** Institute of Gerontology and Geriatrics, University of Perugia, Perugia, Italy

Abstract

Changes in brain amyloid burden have been shown to relate to Alzheimer's disease pathology, and are believed to precede the development of cognitive decline. There is thus a need for inexpensive and non-invasive screening methods that are able to accurately estimate brain amyloid burden as a marker of Alzheimer's disease. One potential method would involve using demographic information and measurements on plasma samples to establish biomarkers of brain amyloid burden; in this study data from the Alzheimer's Disease Neuroimaging Initiative was used to explore this possibility. Sixteen of the analytes on the Rules Based Medicine Human Discovery Multi-Analyte Profile 1.0 panel were found to associate with [¹¹C]-PiB PET measurements. Some of these markers of brain amyloid burden were also found to associate with other AD related phenotypes. Thirteen of these markers of brain amyloid burden – c-peptide, fibrinogen, alpha-1-antitrypsin, pancreatic polypeptide, complement C3, vitronectin, cortisol, AXL receptor kinase, interleukin-3, interleukin-13, matrix metalloproteinase-9 total, apolipoprotein E and immunoglobulin E – were used along with co-variables in multiple linear regression, and were shown by cross-validation to explain >30% of the variance of brain amyloid burden. When a threshold was used to classify subjects as PiB positive, the regression model was found to predict actual PiB positive individuals with a sensitivity of 0.918 and a specificity of 0.545. The number of APOE ε 4 alleles and plasma apolipoprotein E level were found to contribute most to this model, and the relationship between these variables and brain amyloid burden was explored.

Citation: Kiddle SJ, Thambisetty M, Simmons A, Riddoch-Contreras J, Hye A, et al. (2012) Plasma Based Markers of [¹¹C] PiB-PET Brain Amyloid Burden. PLoS ONE 7(9): e44260. doi:10.1371/journal.pone.0044260

Editor: Ashley I. Bush, Mental Health Research Institute of Victoria, Australia

Received: April 13, 2012; **Accepted:** July 31, 2012; **Published:** September 24, 2012

This is an open-access article, free of all copyright, and may be freely reproduced, distributed, transmitted, modified, built upon, or otherwise used by anyone for any lawful purpose. The work is made available under the Creative Commons CC0 public domain dedication.

Funding: Alzheimer's Disease Neuroimaging Initiative (ADNI) data collection and sharing for this project was funded by the ADNI (National Institutes of Health Grant U01 AG024904). ADNI is funded by the National Institute on Aging, the National Institute of Biomedical Imaging and Bioengineering, and through generous contributions from the following: Abbott; Alzheimer's Association; Alzheimer's Drug Discovery Foundation; Amofix Life Sciences Ltd.; AstraZeneca; Bayer HealthCare; BioClinica, Inc.; Biogen Idec Inc.; Bristol-Myers Squibb Company; Eisai Inc.; Elan Pharmaceuticals Inc.; Eli Lilly and Company; F. Hoffmann-La Roche Ltd and its affiliated company Genentech, Inc.; GE Healthcare; Innogenetics, N.V.; Janssen Alzheimer Immunotherapy Research & Development, LLC.; Johnson & Johnson Pharmaceutical Research & Development LLC.; Medpace, Inc.; Merck & Co., Inc.; Meso Scale Diagnostics, LLC.; Novartis Pharmaceuticals Corporation; Pfizer Inc.; Servier; Synarc Inc.; and Takeda Pharmaceutical Company. The Canadian Institutes of Health Research is providing funds to support ADNI clinical sites in Canada. Private sector contributions are facilitated by the Foundation for the National Institutes of Health (www.fnih.org). The grantee organization is the Northern California Institute for Research and Education, and the study is coordinated by the Alzheimer's Disease Cooperative Study at the University of California, San Diego. ADNI data are disseminated by the Laboratory for Neuro Imaging at the University of California, Los Angeles. This research was also supported by National Institutes of Health grants P30 AG010129 and K01 AG030514. This study was supported by InnoMed (Innovative Medicines in Europe www.imi.europa.eu/) an Integrated Project funded by the European Union of the Sixth Framework program priority FP6-2004-LIFESCIHEALTH-5, Life Sciences, Genomics and Biotechnology for Health. This study was also supported by funds from the National Institutes for Health Research Biomedical Research Centre for Mental Health at the South London and Maudsley National Health Service Foundation Trust and Institute of Psychiatry, King's College London. The funders had no role in study design, data collection and analysis, decision to publish, or preparation of the manuscript.

Competing Interests: Intellectual property has been registered on the use of plasma proteins for use as biomarkers for AD by King's College London and Proteome Sciences, with SL and M. Thambisetty named as inventors. IP and MW were full-time employees of Proteome Sciences, London, United Kingdom, at the time of their contribution to the work described in this manuscript. This does not alter the authors' adherence to all the PLOS ONE policies on sharing data and materials. Patent Title Methods and Compositions Relating to Alzheimer's Disease Subject Covers utility of around 30 proteins, specifically listing 16 in the Dependent claims for diagnosis of Alzheimer's disease Filing Proteome Sciences with King's Business United Kingdom Priority GB0421639.6 dated 29/09/2004 PCT Application PCT/GB2005/003756 dated 29/09/2005 Application in Europe, Japan, United States, Australia, and Canada, dated 15/03/2007 to 16/10/2007. In addition Alzheimer's Disease Neuroimaging Initiative received funding from: Abbott; Alzheimer's Association; Alzheimer's Drug Discovery Foundation; Amofix Life Sciences Ltd.; AstraZeneca; Bayer HealthCare; BioClinica, Inc.; Biogen Idec Inc.; Bristol-Myers Squibb Company; Eisai Inc.; Elan Pharmaceuticals Inc.; Eli Lilly and Company; F. Hoffmann-La Roche Ltd and its affiliated company Genentech, Inc.; GE Healthcare; Innogenetics, N.V.; Janssen Alzheimer Immunotherapy Research & Development, LLC.; Johnson & Johnson Pharmaceutical Research & Development LLC.; Medpace, Inc.; Merck & Co., Inc.; Meso Scale Diagnostics, LLC.; Novartis Pharmaceuticals Corporation; Pfizer Inc.; Servier; Synarc Inc.; and Takeda Pharmaceutical Company. This does not alter the authors' adherence to all the PLOS ONE policies on sharing data and materials.

* E-mail: steven.kiddle@kcl.ac.uk (SJK); richard.j.dobson@kcl.ac.uk (RD)

† These authors contributed equally to this work.

Introduction

The failure of several clinical trials targeting brain amyloid deposition in patients with Alzheimers disease (AD) has led to the suggestion that these agents may be useful if targeted at older individuals in pre-symptomatic stages of the disease [1,2]. Screening methods that accurately identify at-risk non-demented older individuals who are most likely to benefit from such treatments will therefore represent a major advance in our ability to effectively test these disease-modifying treatments [3]. If clinical trials of amyloid lowering interventions were successful in the pre-symptomatic stages of AD, then there would be a desire to identify non-demented elderly individuals with elevated brain amyloid burden who could potentially benefit from early intervention. However identifying suitable individuals poses a great challenge in terms of feasibility and cost. To date, the two methods that are most likely to be useful in estimating levels of brain amyloid burden are in vivo imaging with positron emission tomography (PET) using radioligands binding to fibrillar amyloid beta (Aβ), such as [¹¹C] Pittsburgh B compound (PiB), and assays of Aβ levels in cerebrospinal fluid (CSF) [4,5]. However, both these methods have inherent drawbacks that limit their utility as screening tools, especially in resource-poor settings. While PET scanning is expensive and limited to specialised centres, lumbar puncture to obtain CSF is associated with some patient discomfort and is unlikely to be used in primary health care centres to routinely screen large numbers of elderly patients. An inexpensive, non-invasive screening method that accurately estimates brain amyloid burden would therefore fulfil a critical unmet need in the care of the elderly.

The identification of blood-based biomarkers associated with AD diagnosis [6–9] or distinct endophenotypes of AD pathology such as brain atrophy [10–12], hippocampal metabolite abnormalities [13] and amyloid burden [14], have previously been reported. In these studies, proteomic analyses were combined with neuroimaging methods to identify plasma signals associated with measures of AD pathology. In this study, a different strategy was used by examining the association between brain amyloid burden and a panel of 146 plasma analytes – proteins, complexes and metabolites – measured by Rules Based Medicine, Inc. (RBM) (Austin, TX) using the Human Discovery Multi-Analyte Profile (MAP) 1.0 panel and a Luminex 100 platform. Some of the analytes on this panel, such as apolipoprotein E (APOE) and

complement C3 have previously been shown to associate with brain amyloid burden [14,15], while others are associated with other diseases. These assays were performed in plasma samples that were collected from participants in the Alzheimers Disease Neuroimaging Initiative (ADNI; <http://adni.loni.ucla.edu>) study who also underwent [¹¹C]-PiB PET imaging for quantification of fibrillar brain amyloid burden. The main aim of this study was to ask whether concentrations of a panel of plasma proteins and metabolites might accurately reflect the extent of fibrillar amyloid in the brain. A secondary aim was to understand the relationship between the number of APOE ε 4 alleles and plasma based markers of brain amyloid burden.

Results

RBM analytes associate with Aβ levels in the brain

Levels of analytes measured by the RBM Human Discovery MAP 1.0 from ADNI plasma samples were compared to fibrillar amyloid in the RBM-PiB PET cohort (N = 71). Characteristics of this subcohort are summarised in Table 1 where it can be seen that brain amyloid burden was almost significantly different at the 0.05 level between diagnostic groups (Kruskal-Wallis (KW) χ² test p-value 0.055). The distribution of brain amyloid burden in the RBM-PiB PET cohort is shown in Figure S1. In the slightly larger ADNI-PiB PET cohort (i.e. all ADNI subjects with [¹¹C] PiB-PET scans performed at baseline), whose sample characteristics are shown in Table S1, brain amyloid burden was found to be significantly different across diagnostic groups (KW p-value 0.022).

The analytes most associated with brain amyloid burden in the RBM-PiB PET cohort, after taking into account co-variates (age, gender, years of education, number of APOE ε 4 alleles and the number of days between [¹¹C]-PiB PET scan and plasma sample), are shown in Table 2.

Prediction of brain amyloid burden using plasma RBM analytes

To determine if a subset of the RBM panel was able to predict fibrillar amyloid levels in the brain, multiple linear regression was used. In this analysis the following subject co-variates were included: age at plasma sample, years of education, gender, the number of APOE ε 4 alleles and the difference, in days, between plasma sampling and [¹¹C]-PiB PET scan date. Multiple linear

Table 1. Characteristics of the ADNI RBM-PiB PET cohort.

Characteristics	Diagnostic group (number of subjects)			
	Control (3)	MCI (52)	AD (16)	P-value
Subject age in years at time of plasma sample (Median [IQR])	77.4 [5.6]	75.4 [11.1]	72.3 [8.2]	0.290
Sex (Male/Female)	1/2	37/15	10/6	0.263
Years of education (Median [IQR])	13.0 [3.0]	16.0 [5.0]	16.0 [5.3]	0.398
Number of APOE ε 4 alleles (0/1/2)	2/1/0	25/22/5	7/7/2	0.977
Days between [¹¹ C]-PiB PET scan and plasma sample (Median [IQR])	5.0 [15.5]	23.5 [60.5]	21.5 [42.3]	0.288
Average PiB uptake (Median [IQR])	1.31 [0.108]	1.98 [0.723]	1.90 [0.438]	0.055

Characteristics of the ADNI RBM-PiB PET subcohort by diagnostic group. P-values were calculated for differences across diagnostic groups using a Kruskal-Wallis χ² test for continuous characteristics and simulated contingency p-values for categorical characteristics. doi:10.1371/journal.pone.0044260.t001

Table 2. RBM analytes associated with brain amyloid burden.

RBM analyte	Gene name	Uniprot ID	Partial SRC with A β	P-value	Benjamini-Hochberg corrected p-value
C-peptide	<i>INS</i>	P01308	-0.310	0.010	0.351
Fibrinogen (α , β and γ)	<i>FG(A/B/G)</i>	P02671 P02675 P02679	-0.307	0.010	0.351
Alpha-1-antitrypsin	<i>SERPINA1</i>	P01009	-0.302	0.012	0.351
Pancreatic polypeptide	<i>PPY</i>	P01298	-0.296	0.014	0.351
Complement C3	<i>C3</i>	P01024	-0.296	0.014	0.351
Vitronectin	<i>VTN</i>	P04004	-0.295	0.014	0.351
von Willebrand factor	<i>VWF</i>	P04275	-0.287	0.017	0.363
Cortisol	(NA)	(NA)	0.271	0.025	0.412
Serum amyloid p-component	<i>APCS</i>	P02743	-0.268	0.027	0.412
AXL receptor tyrosine kinase	<i>AXL</i>	P30530	0.266	0.028	0.412
Interleukin-3	<i>IL3</i>	P08700	0.261	0.032	0.412
Interleukin-13	<i>IL13</i>	P35225	0.252	0.038	0.412
Matrix metalloproteinase-9 total	<i>MMP9</i>	P14780	-0.250	0.040	0.412
APOE	<i>APOE</i>	P02649	-0.248	0.042	0.412
Leptin	<i>LEP</i>	P41159	-0.248	0.042	0.412
Immunoglobulin E (IgE)	(NA)	(NA)	-0.243	0.046	0.424

Analytes with a partial SRC p-value of <0.05 are shown. Benjamini-Hochberg corrected p-values were calculated to take into account the comparisons against all RBM analytes.

doi:10.1371/journal.pone.0044260.t002

regression was applied to predict brain amyloid burden using these co-variables only, giving a leave one out (LOO) cross validation (CV) R^2 of 0.040. When brain amyloid burden was regressed to just the number of *APOE* ϵ 4 alleles this gave a LOO CV R^2 of 0.123. Then multiple linear regression was applied to predict brain amyloid burden from both RBM analytes and co-variables; the analysis was restricted to the 16 RBM analytes that had a partial Spearman's rank correlation (SRC) uncorrected p-value <0.05 (Table 2) resulting in a LOO CV R^2 of 0.276.

Overfitting was reduced by grouping correlated variables and selecting one RBM analyte to represent each group (Figure 1); first all the 16 RBM analytes were used, then analytes were removed from the model one by one, in the order determined by clustering, and LOO CV repeated. The order of analyte removal was: (1) von willebrand factor, (2) leptin, (3) serum amyloid p-component, (4) vitronectin, (5) interleukin-13, (6) component C3, (7) matrix metalloproteinase-9 total, (8) immunoglobulin E (IgE), (9) APOE, (10) pancreatic polypeptide, (11) alpha-1-antitrypsin, (12) interleukin-3, (13) cortisol, (14) fibrinogen and finally (15) AXL receptor tyrosine kinase.

The grouping that resulted in the highest LOO CV R^2 over all possible hierarchical clustering cut-offs was used (Figure 2). This was achieved when 13 RBM analytes were used: c-peptide, fibrinogen, alpha-1-antitrypsin, pancreatic polypeptide, complement C3, vitronectin, cortisol, AXL receptor tyrosine kinase, interleukin-3, interleukin-13, matrix metalloproteinase-9 total, APOE and IgE (LOO CV R^2 0.310, permutation test p-value 4×10^{-5}). The 13 RBM analyte and co-variate model is able to account for approximately a third of the variance of brain amyloid burden. The relative importance of variables to the model is shown in Figure 3; the number of *APOE* ϵ 4 alleles was seen to be the most important variable for the model, but RBM analytes contribute more to the model than years of education or age. The 71 subjects brain amyloid burden was then dichotomised into

either PiB positive (brain amyloid burden >1.5) or PiB negative (brain amyloid burden <1.5), based on a threshold used in relevant literature [16]. Similarly, the subjects LOO CV predicted brain amyloid burden, based on the 13 RBM and co-variate model, was dichotomised into either predicted PiB positive (predicted brain amyloid burden >1.5) or predicted PiB negative (predicted brain amyloid burden <1.5). For each subject the predicted and actual PiB classes (positive or negative) were compared; the predicted PiB classes identified actual PiB positive subjects with a sensitivity of 0.918 and a specificity of 0.545. It was also found that removing all co-variables, except the number of *APOE* ϵ 4 alleles, from the 13 RBM and co-variate regression model gave a similar but slightly improved predictive ability (LOO CV R^2 0.311).

Markers of brain amyloid burden associate with other measures of AD pathology

The 16 RBM analytes found to associate with brain amyloid burden in the ADNI RBM-PiB PET cohort were then tested for association with other phenotypes known to relate to AD pathology in the ADNI-RBM cohort (sample characteristics shown in Table S2). In this analysis age, gender, years of education and the number of *APOE* ϵ 4 alleles were included in partial correlation analysis. Subjects with missing values for a relevant comparison were excluded. First the level of the markers of brain amyloid burden were compared with the level of $A\beta_{1-42}$ in the CSF. Leptin was found to associate with CSF $A\beta_{1-42}$ (partial SRC 0.183, BH MTC p-value 0.0183). Additionally, when multiple testing was not taken into account, vitronectin was associated with CSF $A\beta_{1-42}$ (partial SRC 0.131, uncorrected p-value 2.07×10^{-2}).

Markers of brain amyloid burden were then compared to AD relevant brain regions as measured by structural magnetic resonance imaging (sMRI). The volume of the left and right

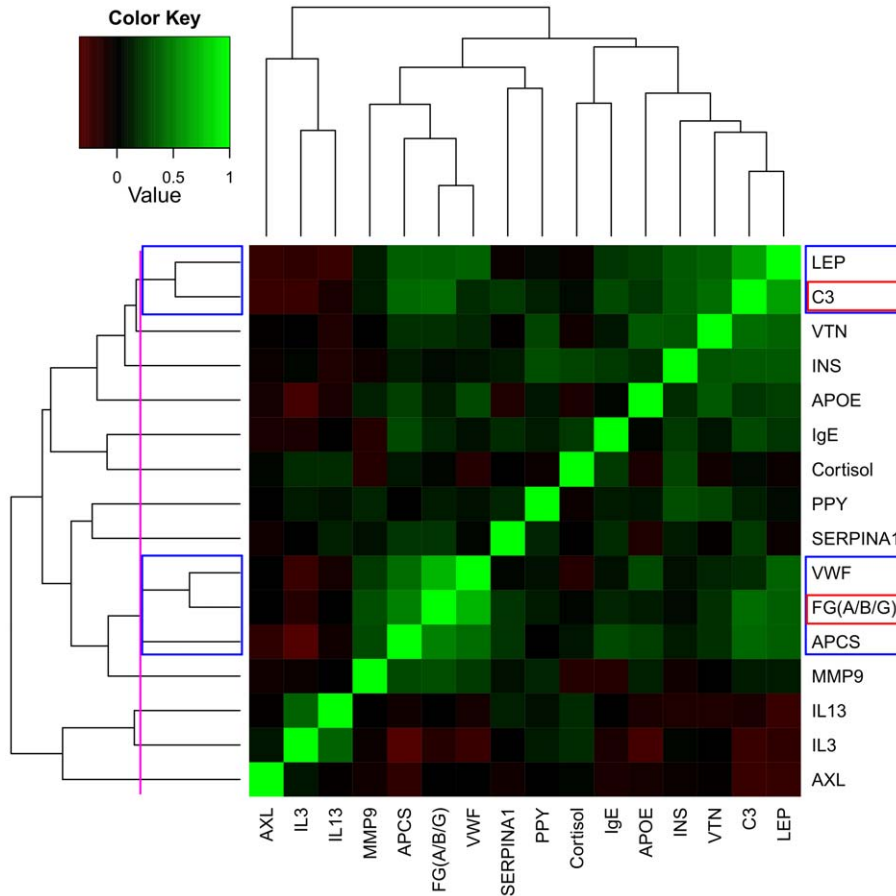


Figure 1. Analyte correlations. Heatmaps of partial SRC between RBM analytes significantly associated (p-value <0.05) with brain amyloid burden, taking into account: age, gender, years of education, number of *APOE* ϵ 4 alleles and the difference, in days, between plasma sampling and [¹¹C]-PiB PET scan date. RBM analytes have been ordered by hierarchical clustering, the final cut-off is shown in purple. Variables that have been grouped are shown in blue boxes, and the representative for each group is shown in a red box. doi:10.1371/journal.pone.0044260.g001

hippocampi, and the thickness of the left and right entorhinal cortices were used, as these regions are known to be important in AD pathology [12]. Alpha-1-antitrypsin was found to associate at the 5% significance level with the thickness of both the left (partial SRC -0.132, BH MTC p-value 0.0289) and right (partial SRC -0.145, BH MTC p-value 9.82×10^{-3}) entorhinal cortices. Additionally, leptin was found to associate with the thickness of the right entorhinal cortex (partial SRC 0.124, BH MTC p-value 0.0264). Cortisol was found to associate at the 5% significance level with the volume of both the left (partial SRC -0.158, BH MTC p-value 2.71×10^{-3}) and right hippocampi (partial SRC -0.161, BH MTC p-value 2.07×10^{-3}).

Different cognitive tests, such as the Mini Mental State Exam (MMSE) and Alzheimer’s Disease Assessment Scale-cognitive subscale (ADAS-cog) 13, assess different aspects of cognitive decline. The association between scores from these tests and levels of markers of brain amyloid burden was analysed; 4/16 of the markers of brain amyloid burden – alpha-1-antitrypsin (partial SRC -0.145, BH MTC p-value 3.02×10^{-3}), complement C3 (partial SRC -0.189, BH MTC p-value 9.46×10^{-5}), cortisol (partial SRC -0.162, BH MTC p-value 8.33×10^{-4}) and fibrinogen (partial SRC -0.130, BH MTC p-value 8.28×10^{-3}) – were found to associate with the total MMSE score at the 5%

level. In the same cohort (ADNI-RBM), three of these markers – alpha-1-antitrypsin (partial SRC 0.172, BH MTC p-value 0.0403), complement C3 (partial SRC 0.119, BH MTC p-value 0.0467) and fibrinogen (partial SRC 0.111, BH MTC p-value 6.34×10^{-4}) – were found to associate with the ADAS-cog 13 score at the 5% significance level.

Levels of the 16 markers of brain amyloid burden were then compared between different diagnostic groups (control, MCI and AD) in the various cohorts, to assess whether these markers were related to clinical diagnosis. It was found that half of the biomarkers of brain amyloid burden measured – APOE (BH MTC KW p-value 1.24×10^{-9} , AD/control median difference (MD) -0.143), complement C3 (BH MTC KW p-value 8.88×10^{-8} , MCI/control MD -0.0483), cortisol (BH MTC KW p-value 2.40×10^{-3} , AD/control MD 0.0366), interleukin-3 (BH MTC KW p-value 8.48×10^{-3} , AD/control MD -0.0670), leptin (BH MTC KW p-value 8.48×10^{-3} , AD/control MD -0.112), pancreatic polypeptide (BH MTC KW p-value 1.92×10^{-2} , AD/control MD 0.122), alpha-1-antitrypsin (BH MTC KW p-value 1.75×10^{-7} , AD/control MD 0.0300) and vitronectin (BH MTC KW p-value 5.50×10^{-3} , AD/control MD -0.0344) – significantly differ at the 5% level between diagnostic groups.

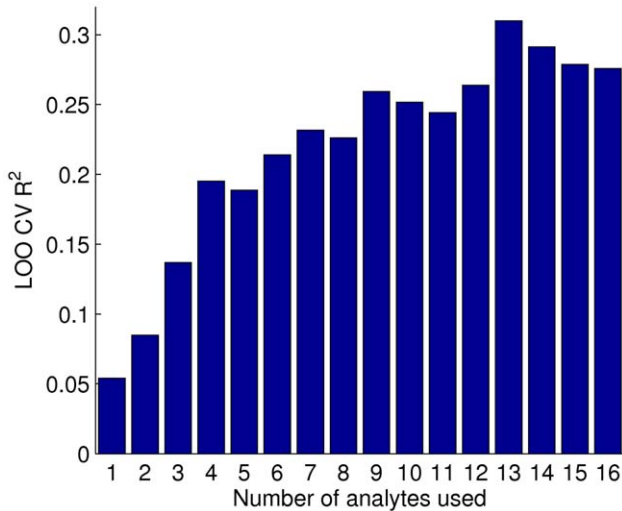


Figure 2. Cross validation of multiple linear regression. Barplot of the LOO CV R² of multiple linear regressions of brain amyloid burden against a range of RBM analytes and co-variates. Subsets of RBM analytes that associated with brain amyloid levels with a p-value <0.05 were used. Various subsets were chosen by hierarchical clustering at various cutoffs, with the analyte most associated with brain amyloid burden in each cluster chosen to represent that cluster. Age, gender, years of education, the number of *APOE* ϵ 4 alleles and the difference, in days, between plasma sampling and [¹¹C]-PiB PET scan were used as co-variates.
doi:10.1371/journal.pone.0044260.g002

The effect of *APOE* genotype on *APOE* level in plasma and brain amyloid burden

The number of *APOE* ϵ 4 alleles and the level of *APOE* in plasma were the two variables that contributed most to the regression model. A number of studies have shown that *APOE* level in plasma is affected by presence of *APOE* ϵ 4 alleles [14,15,17–19]. Additionally, Slooter et al., [17] have previously

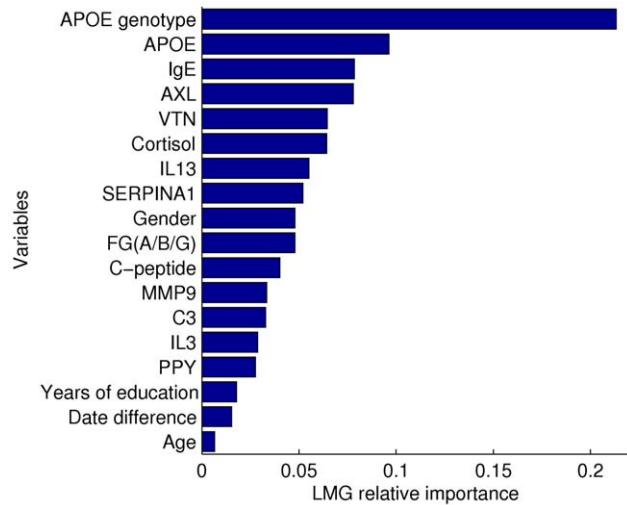


Figure 3. Relative importance in multiple linear regression. Relative importance of variables used in multiple linear regression assessed using the LMG relative importance score [51]. When all the data is used to fit the model it explains 62.0% of the variance of the brain amyloid burden, here the contribution of the variables used in this model are shown.
doi:10.1371/journal.pone.0044260.g003

shown that the difference in plasma *APOE* levels between AD and control subjects is largely driven by the *APOE* genotype, and so the interaction of these two variables was studied further. In the ADNI-RBM cohort the number of *APOE* ϵ 4 alleles was seen to have a negative effect on plasma *APOE* levels (KW p-value <2.20×10⁻¹⁶, Table 3). The negative effect of *APOE* genotype on plasma *APOE* levels in this ADNI subcohort was demonstrated recently using Analysis of Variance (ANOVA) [20]. The analysis presented here shows that this result holds when assumptions of normality are dropped. The negative effect of the number of *APOE* ϵ 4 alleles on plasma *APOE* levels observed fits with the findings of some literature [15,17,18], but is the opposite of the positive effect seen by both Evans et al. and Thambisetty et al. (2010) [14,19].

Given the discrepancy between this finding and those in two published studies, the relationship between the number of *APOE* ϵ 4 alleles and plasma *APOE* levels was studied in an independent cohort of 694 subjects (AddNeuroMed and King’s Health Partners Dementia Case Register, ANM + KNPDCR). In the ANM + KHPDCR cohort the number of *APOE* ϵ 4 alleles was also seen to have a negative effect on plasma *APOE* levels (KW p-value <2.20×10⁻¹⁶, Table 3). Both studies that have found a positive relationship between *APOE* ϵ 4 alleles on plasma *APOE* levels have been conducted in cohorts of cognitively normal subjects [14,19], which may account for this inconsistency. However, a similar negative effect was found in the control subjects (who are cognitively normal) of the ANM + KHPDCR cohort (KW p-value 1.57×10⁻⁴, Table 3). This suggests another factor, other than cognitive decline, is responsible for the discrepancies between these studies.

Given that the number of *APOE* ϵ 4 alleles affects both plasma *APOE* levels and brain amyloid burden, it is possible that the number of *APOE* ϵ 4 alleles confounds the association between plasma *APOE* levels and brain amyloid burden. To test this, partial correlation analysis was repeated excluding the number of *APOE* ϵ 4 alleles, this increased the correlation of plasma *APOE* level and brain amyloid burden (partial SRC -0.393, p-value 6.9×10⁻⁴), which indicated that the association is indeed partly confounded by the number of *APOE* ϵ 4 alleles.

Discussion

In this study, fibrillar amyloid beta levels, in ADNI subjects, have been compared and related to the level of analytes on the RBM panel in plasma. Brain amyloid burden appears to be distributed bimodally in the RBM-PiB PET cohort, as has been previously reported for a larger ADNI subcohort by Ewers et al. [21]. Associations of C-peptide, fibrinogen, alpha-1-antitrypsin, pancreatic polypeptide, complement C3, vitronectin, von willibrand factor, cortisol, serum amyloid p-component, AXL receptor tyrosine kinase, interleukin-3, interleukin-13, matrix metalloproteinase-9, *APOE*, leptin and immunoglobulin E with brain amyloid burden have been found in this study. Some of these markers of brain amyloid burden were also found to associate with other AD related phenotypes, such as CSF A β ₁₋₄₂, MRI features, cognitive tests and diagnostic groups. In regression models it was found that models including both RBM analytes and co-variates performed better than those using only co-variate information, suggesting that the RBM panel of analytes can be used as markers of brain amyloid burden. Combining highly correlated variables was found to reduce overfitting and led to a set of 13 RBM analytes that together with co-variates could explain >30% of the variance of brain amyloid burden and predict PiB positive individuals with a high sensitivity. This result, and the increased predictive accuracy of the 13 RBM model in comparison to using

Table 3. The effect of *APOE* genotype on plasma *APOE* levels.

Cohort	The plasma level in log $\mu\text{g/ml}$ of <i>APOE</i> in			Kruskal-Wallis χ^2 P-value
	subjects with <i>n</i> <i>APOE</i> ϵ 4 alleles (median [IQR])			
	<i>n</i> = 0	<i>n</i> = 1	<i>n</i> = 2	
ADNI-RBM	1.79 [0.200]	1.66 [0.203]	1.52 [0.233]	$<2.20 \times 10^{-16}$
ANM + KHPDCR	1.91 [9.75×10^{-2}]	1.88 [9.00×10^{-2}]	1.82 [7.00×10^{-2}]	$<2.20 \times 10^{-16}$
ANM + KHPDCR controls	1.9 [0.100]	1.88 [8.00×10^{-2}]	1.83 [3.00×10^{-2}]	1.57×10^{-4}

Level of plasma *APOE* stratified by the subjects number of *APOE* ϵ 4 alleles.
doi:10.1371/journal.pone.0044260.t003

only co-variables to predict fibrillar amyloid alone, indicate that these analytes reflect levels of fibrillar amyloid in the brain.

The potential of *APOE* level in plasma to be used as a biomarker for brain amyloid burden, previously shown in Thambisetty et al. (2010) [14], is given support by this study. However it should be noted that the association between plasma *APOE* level and brain amyloid burden was seen to be positive in that study and negative in this. This inconsistency may relate to differences between the cohorts, for example the BLSA cohort studied in Thambisetty et al. (2010) were selected to be cognitively normal. This fits with the recent finding that plasma level of *APOE* correlates negatively with brain amyloid burden in the Australian Imaging, Biomarker and Lifestyle Flagship Study of Ageing, which includes subjects suffering from AD [15]. Similarly, the effect of the presence of *APOE* ϵ 4 alleles on plasma *APOE* level in the study presented here was found to be the opposite of that found in both Thambisetty et al. (2010) and Evans et al. [14,19], however it is the same as that seen in Slooter et al., Siest et al. and Gupta et al. [15,17,18]. Additionally, this relation was replicated in an independent cohort (ANM + KHPDCR) and its control subcohort. This latter finding suggests that the differences between the findings of these studies is not due to the subjects cognitive status. The factor/s responsible for these inconsistencies are not known, but the fact that strong associations are seen in all studies is encouraging.

While no association between the level of RBM analytes in plasma and brain amyloid burden was found to be significant at the 5% level after multiple testing corrections, it should be noted the cohort used (RBM-PIB PET) contained relatively few subjects and that many analytes that associated significantly at the uncorrected 0.05 level have known relations to AD pathology, for example levels of *APOE* and complement C3 in plasma have previously been found to associate with fibrillar amyloid levels in the Baltimore Longitudinal Study of Aging (BLSA) cohort [14]. In addition, some of these analytes were subsequently found to associate with surrogate phenotypes of AD pathology in the larger ADNI-RBM cohort, such as: diagnostic groups, MMSE score, ADAS-cog 13 score, CSF $A\beta_{1-42}$ level, and the thickness and/or volume of the entorhinal cortices. However, 7/16 of the markers of brain amyloid burden – c-peptide, von Willebrand factor, serum amyloid p-component, AXL receptor tyrosine kinase, interleukin-13, matrix metalloproteinase-9 total and IgE – were not found to associate with any of the surrogate phenotypes of AD pathology that were tested. It should be noted that 5 of the 7 are linked to AD in the literature (Table S3), only IgE and interleukin-13 have no prior reported association. Most of these surrogate phenotypes, except CSF $A\beta_{1-42}$, are believed to change at a later disease stage

than amyloid pathology, and so it is possible that the lack of association of some of the markers with, for example, diagnostic groups is due to the mixture of high and low brain amyloid burden control subjects used. However, the lack of association of the majority of the markers with CSF $A\beta_{1-42}$ levels is of greater concern because CSF $A\beta_{1-42}$ levels are strongly associated with brain amyloid burden [4,5]; this may indicate that we are over-fitting the available data and further highlights the need for datasets with larger sample sizes for future studies of markers of brain amyloid burden.

While half of the markers associated with diagnostic groups, 3/8 of these markers – alpha-1-antitrypsin, pancreatic polypeptide and interleukin-3 – had a median difference between AD (or MCI) and control subjects that was of the opposite sign to the partial SRC coefficient measuring their association with brain amyloid burden. This result is surprising as brain amyloid burden is positively associated with AD and MCI diagnosis groups. This discrepancy could relate to the delay between these disease stages, and may mean that the level of some of the markers in plasma changes during $A\beta$ deposition and then changes again, but in the opposite direction, before the onset of clinical symptoms. Similar u-shaped profiles, but between subjects in different diagnostic groups, have been observed (cross-sectionally) in the level of many leukocyte transcripts during AD progression [22].

Partial correlation showed that the number of *APOE* ϵ 4 alleles partly confounded the association between *APOE* level in plasma and brain amyloid burden; however, plasma *APOE* levels did help a regression model predict brain amyloid burden and so further study is required to get a clearer idea of the *APOE* ϵ 4 independent information conveyed by plasma *APOE* levels. This study has revealed many novel potential markers of brain amyloid burden, chosen to give *APOE* ϵ 4 independent information, as well as replicating findings from other studies. This will allow further validation work that can test the replicability and clinical utility of these markers.

In a previous study that used discovery proteomics to identify proteins associated with brain amyloid levels, Thambisetty et al. (2010) showed that levels of *APOE* and Complement C3 precursor in plasma were different between subjects with high and low brain amyloid burdens [14]. It was encouraging that both were seen to be associated with brain amyloid burden in this study as well. Complement C3 precursor has also been found to be associated with atrophy of hippocampal volume, another imaging marker of AD [11], and to have a role in plaque clearance in a mouse model [23]. It has also been found along with vitronectin to be at different levels in serum between control and AD subjects [6]. The level of fibrinogen gamma was also found to be associated with

atrophy of hippocampal volume in Thambisetty et al. (2011) [11]. Fibrinogen alpha, beta and gamma are targeted by the same RBM analyte and were found to associate with brain amyloid burden in this study.

Of the 16 RBM analytes whose level in plasma associated with brain amyloid burden, many have known relationships with Alzheimer's disease. The levels of the following have previously been found to be different between control and AD subjects: alpha-1-antitrypsin [9,24], APOE [9], cortisol [9,25,26], interleukin-3 [27], matrix metalloproteinase-9 [9,28], pancreatic polypeptide [9,29], serum amyloid p-component [30] and von Willebrand factor [31]. Serum amyloid p-component [32] and insulin [33] have been shown to affect 'AD'-like pathology *in vitro*. Interleukin-3 [34] and leptin [35] have been found to affect the interaction of neurons and A β . Additionally, interleukin-13 has been found to be produced in microglia in response to A β [36]. More recently, APOE and matrix metalloproteinase-9 have been shown to be involved together in the breakdown of the blood brain barrier, which can initiate neurodegeneration [37].

Given the relatively small number of subjects in this study it was not practical to separate the subjects into training and test sets, to assess the predictive accuracy of the regression model. Instead, k-fold cross-validation was used, allowing more of the subjects to be used for fitting the regression model. Generally it is advisable to use 10-fold cross-validation because it has been found to have a lower variance [38]. However, given the limited number of samples available, a leave one out cross-validation approach was used in this study to allow the maximal use of the subjects available. Given the limited number of subjects on which the model is based, it will be important in the future to study the ability of these biomarkers to predict brain amyloid burden in an independent cohort. Validation studies would benefit from greater numbers of subjects and better sampling strategies. For example, the distribution of brain amyloid burden in the RBM-PiB PET subcohort is affected by the sampling strategy applied to select control subjects for RBM measurements; only plasma of control subjects with high CSF A β_{1-42} were selected, for reasons unrelated to the current study. This means that the resulting model may not extrapolate to cognitively normal subjects with high brain amyloid burden, this could be tested in a validation study. Additionally, the use of only three control subjects may make the regression model less likely to generalise to prediction of brain amyloid burden in early Alzheimer's disease.

In conclusion, analytes associating with brain amyloid burden have the potential to act as biomarkers of early AD-related pathology. In this study sixteen analytes were found to associate with brain amyloid burden, including two (APOE and complement C3) that had already been shown to associate with brain amyloid burden in an independent cohort. Some of these analytes were also found to associate with other AD related phenotypes in a larger ADNI subcohort, such as: CSF A β_{1-42} , MRI features, cognitive scores and diagnostic groups. Some of these analytes were found to correlate highly with each other, and so a representative set of thirteen analytes – c-peptide, fibrinogen, alpha-1-antitrypsin, pancreatic polypeptide, complement C3, vitronectin, cortisol, AXL receptor kinase, interleukin-3, interleukin-13, matrix metalloproteinase-9 total, APOE and IgE – were used along with subject age, gender, years of education, the number of APOE ϵ 4 alleles and sampling dates to predict brain amyloid burden. The 13 analyte and co-variate model was found by cross-validation to account for >30% of the variance of brain amyloid burden, as opposed to ~ 4–13% using just co-variates alone, showing the potential of plasma analytes as markers of brain amyloid burden. The model was also able to predict PiB positive

individuals with a high sensitivity. The two variables with the largest contribution to the model were found to be the number of APOE ϵ 4 alleles and plasma APOE level. The association of plasma APOE level with brain amyloid burden was shown to be partly confounded by the number of APOE ϵ 4 alleles, highlighting the importance of novel biomarkers that are less confounded by the APOE genotype revealed by this study.

Materials and Methods

Ethics statement

Written informed consent was obtained from all participants in ADNI and the study was conducted with prior institutional ethics approval. Both ANM and KHPDCR were approved by the South London and Maudsley NHS Foundation Trust ethics committee. Ethics committee approval was also obtained at each of the participating centres in accordance with the Alzheimers Association published recommendations [39].

ADNI Data

Data used in the preparation of this article were obtained from the ADNI database (adni.loni.ucla.edu). The ADNI was launched in 2003 by the National Institute on Aging (NIA), the National Institute of Biomedical Imaging and Bioengineering (NIBIB), the Food and Drug Administration (FDA), private pharmaceutical companies and non-profit organisations, as a \$60 million, 5-year public-private partnership. The primary goal of ADNI has been to test whether serial magnetic resonance imaging (MRI), positron emission tomography (PET), other biological markers, and clinical and neuropsychological assessment can be combined to measure the progression of mild cognitive impairment (MCI) and early Alzheimer's disease (AD). Determination of sensitive and specific markers of very early AD progression is intended to aid researchers and clinicians to develop new treatments and monitor their effectiveness, as well as lessen the time and cost of clinical trials.

The Principal Investigator of this initiative is Michael W. Weiner, MD, VA Medical Center and University of California San Francisco. ADNI is the result of efforts of many co-investigators from a broad range of academic institutions and private corporations, and subjects have been recruited from over 50 sites across the U.S. and Canada. The initial goal of ADNI was to recruit 800 adults, ages 55 to 90, to participate in the research, approximately 200 cognitively normal older individuals to be followed for 3 years, 400 people with MCI to be followed for 3 years and 200 people with early AD to be followed for 2 years. For up-to-date information, see www.adni-info.org.

Demographic (age, gender, years of education), genetic (number of APOE ϵ 4 alleles), diagnosis (control, MCI or AD at a given date) and analyte (metabolite/protein/complex) levels in plasma were compared with brain amyloid burden (or other markers of AD pathology such as: CSF A β_{1-42} level, MRI features, cognitive scores or diagnostic groups). Diagnoses were recorded for each subject at each visit. Plasma and CSF were collected from fasted subjects using the procedures described previously [29,40]. Levels of 190 analytes were measured from subject plasma using the Rules Based Medicine (RBM, rulesbasedmedicine.com, Austin, TX) Human Discovery Multi-Analyte Profile (MAP) 1.0 panel and a Luminex 100 platform [41]. Measurements of 44 analytes were excluded on the basis of quality control, leaving 146 analytes in the subsequent analysis. The levels of all 146 analytes (except: apolipoprotein H, complement factor H, E selectin, epidermal growth factor, fibrinogen, interleukin-12 subunit p40, placenta growth factor, serum glutamic oxaloacetic transaminase and

thrombopoietin) were log transformed to improve the fit of the levels to the normal distribution. Description of methods used to derive measurements of regional [^{11}C] PiB-PET levels have been given in Jagust et al. (2010) and (2011) previously [16,42]. In this study a similar approach was taken by averaging over regional [^{11}C] PiB-PET measurements in parietal, frontal, anterior cingulate and precuneus regions of interest, to derive a global measure of brain amyloid burden.

Data from either baseline or 12 months were used for these cohorts, as described above, chosen to increase the number of subjects with available data. Eighty four subjects (ADNI-PiB PET cohort) had a [^{11}C] PiB-PET scan 12 months after baseline, the characteristics of this sample are shown in Table S1. Five hundred and sixty six subjects (ADNI-RBM cohort) had RBM analytes measured in plasma collected at baseline, the characteristics of this sample at baseline is shown in Table S2. Seventy one subjects (RBM-PiB PET cohort) had RBM analytes measured in plasma collected 12 months after baseline and a [^{11}C] PiB-PET scan within a year of this, the characteristics of this sample at the date of plasma collection is shown in Table 1. Converters from control to MCI between plasma sample and [^{11}C] PiB-PET scan date account for the discrepancy in diagnostic groups between the ADNI-PiB PET and RBM-PiB PET cohorts. Subject age was determined based on the same dates.

Sample characteristics of each cohort by diagnostic group were analysed in R [43]. Many continuous variables were not distributed normally, and so are described by median and interquartile range instead of mean and standard deviation, this was also the reason that non-parametric statistical tests were used. Continuous characteristics were tested for differences over diagnostic groups by the non-parametric Kruskal-Wallis χ^2 test, using `kruskal.test` in the R stats package. Discrete characteristics were tested for differences over diagnostic groups by simulated contingency table p-values, in the `fisher.test` function in the R stats package, using 2,000 Monte Carlo samples.

MRI scan analysis

Dicom format MRI data was downloaded from the ADNI website (www.loni.ucla.edu/ADNI). Data from 1.5 T scanners was used with data collected from a variety of MR-systems with protocols optimised for each type of scanner. The MRI protocol included a high resolution sagittal 3D T1-weighted MPRAGE volume (voxel size $1.1 \times 1.1 \times 1.2 \text{ mm}^3$) acquired using a custom pulse sequence specifically designed for the ADNI study to ensure compatibility across scanners. Full brain and skull coverage was required for the MRI datasets and detailed quality control carried out on all MR images according to previously published quality control criteria [44,45].

We applied the Freesurfer pipeline (version 4.5.0) to the MRI images to produce regional cortical thickness and volumetric measures as previously described [46] to produce hippocampal and entorhinal cortex volumes, as well as entorhinal cortical thickness. All volumetric measures from each subject were normalised by the subjects intracranial volume. Cortical thickness measures were not normalised [47] and were used in their raw form.

Correlation analysis

R was used to analyse SRC and partial SRC, using `cor.test` in the stats package and `pcor.test` in the `ppcor` package [48] respectively. Partial correlations were used to take into account subjects: age, gender, years of education, number of *APOE* ϵ 4 alleles and the number of days separating the date of [^{11}C]-PiB

PET scan and plasma sample. In the case of correlations between RBM analytes and CSF $A\beta$, ADAS-cog 13 or MRI features, subjects whose relevant data was missing were excluded. RBM analytes were clustered based upon $(1 - \text{their partial SRC})$ using the R function `hclust` in the stats package with default settings, and displayed using function `heatmap.2` from the R `gplots` package [49].

Linear regression

Linear regression was performed using the `lm` function in the R stats package. This was appropriate because although many variables were not distributed normally, the residuals of the regression models used were approximately. Before regression, measurements of each RBM analyte were transformed to a standard deviation of one to allow each analyte to have equal influence on the model (but not transformed to a mean of zero, to make the analysis more comparable with that used in Thambisetty et al. (2010) [14]). LOO CV was performed by fitting linear regression models to the data, leaving out one subject at a time, and using the model to predict brain amyloid burden in that subject based on the fitted model. LOO CV R^2 was calculated as the square of the Pearson's correlation coefficient, calculated using `cor.test`, between the predicted and observed brain amyloid burden.

A cut-off of 1.5 was used to dichotomise brain amyloid burden in the RBM-PiB PET cohort as PiB positive (49 subjects) or negative (22 subjects), as previously suggested by Jagust et al. (2010) [16]. Predicted values were similarly dichotomised. Sensitivity and specificity of this prediction was calculated in R using `epi.test` in the `epiR` package [50].

Permutation tests were performed by permuting brain amyloid burden across subjects in the data, and re-calculating the LOO CV R^2 that was achieved by fitting the regression model to the resulting data. 100,000 permutations were used, and the number of cases in which the LOO CV R^2 exceeded that achieved with the original dataset was recorded. Relative importance was calculated using the LMG score [51], using the R package `relaimpo` [52].

Independent cohort data for validation of the effect of *APOE* ϵ 4 genotype on *APOE* level in plasma

EDTA plasma samples from fasted subjects were obtained from two independent cohorts: ANM a multicentre European study across six centres [53] and KHPDCR a UK based study. The combined cohort contained 269 control, 163 MCI and 262 AD subjects. *APOE* genotype was determined using DNA extracted from blood leukocytes by a standard phenol-chloroform extraction. The three main alleles *APOE* ϵ 2, *APOE* ϵ 3 and *APOE* ϵ 4 differ at two residues, so consist of a two single nucleotide polymorphism (SNP) haplotype. The SNPs rs429358 and rs7412 were genotyped and the allele inferred. SNPs were determined by allelic discrimination assays based on fluorogenic 5' nuclease activity. TaqMan SNP genotyping assays were performed on an ABI Prism 7900HT and analyzed using SDS software, according to the manufacturer's instructions (Applied Biosystems, Warrington, UK). 199 control, 103 MCI and 120 AD subjects were found to have 0 *APOE* ϵ 4 alleles. 65 control, 56 MCI and 112 AD subjects were found to have 1 *APOE* ϵ 4 alleles. 5 control, 4 MCI and 30 AD subjects were found to have 2 *APOE* ϵ 4 alleles. The Human Neurodegenerative Panel 1 (7-plex) Cat. HNDG1-36K MILLIPLEX MAP multiplex panels, developed by Merck Millipore, was used to measure *APOE* level in plasma.

Supporting Information

Figure S1 Distribution of brain amyloid burden. A stacked histogram showing the distribution of brain amyloid burden for different diagnostic groups. Control (dark blue), MCI (green) and AD (red) represent subjects who remained in these diagnostic groups throughout follow up period. Control/MCI (light blue) and MCI/AD (orange) represents subjects whose diagnosis converted between these groups during the follow up period. Brain amyloid burden is in relative units. (TIF)

Table S1 Characteristics of the ADNI-PiB PET cohort by diagnostic group. P-values were calculated when appropriate for differences across diagnostic groups, using a Kruskal-Wallis χ^2 test for continuous characteristics and simulated contingency table p-values for discrete characteristics. (PDF)

Table S2 Characteristics of the ADNI-RBM cohort by diagnostic group. P-values were calculated when appropriate for differences across diagnostic groups, using a Kruskal-Wallis χ^2 test for continuous characteristics and simulated contingency table p-values for discrete characteristics. (PDF)

References

1. Golde TE, Schneider LS, Koo EH (2008) Anti-A β therapeutics in Alzheimer's disease: the need for a paradigm shift. *Neuron* 69: 203–213.
2. Reiman EM, Langbaum JB, Fleisher AS, Caselli RJ, Chen K, et al. (2011) Alzheimer's Prevention Initiative: a plan to accelerate the evaluation of presymptomatic treatments. *J Alzheimers Dis* 26: 321–329.
3. Aisen PS, Andrieu S, Sampaio C, Carrillo M, Khachaturian ZS, et al. (2011) Report of the task force on designing clinical trials in early (predementia) AD. *Neurology* 76: 280–286.
4. Grimmer T, Riemenschneider M, Förstl H, Henriksen G, Klunk WE, et al. (2009) Beta amyloid in Alzheimer's disease: increased deposition in brain is reflected in reduced concentration in cerebrospinal fluid. *Biol Psychiatry* 65: 927–934.
5. Koivunen J, Pirttilä T, Kempainen N, Aalto S, Herukka SK, et al. (2008) PET amyloid ligand [¹¹C] PIB uptake and cerebrospinal uid beta-amyloid in mild cognitive impairment. *Dement Geriatr Cogn Disord* 26: 378–383.
6. Zhang R, Barker L, Pinchev D, Marshall J, Rasamoeliso M, et al. (2004) Mining biomarkers in human sera using proteomic tools. *Proteomics* 4: 244–256.
7. Hye A, Lynham S, Thambisetty M, Causevic M, Campbell J, et al. (2006) Proteome-based plasma biomarkers for Alzheimer's disease. *Brain* 129: 3042–3050.
8. Soares HD, Potter WZ, Pickering E, Kuhn M, Immermann FW, et al. (Ahead of print) Plasma biomarkers associated with the apolipoprotein e genotype and alzheimer disease. *Arch Neurol*.
9. Doecke JD, Laws SM, Faux NG, Wilson W, Burnham SC, et al. (Ahead of print) Blood-based protein biomarkers for diagnosis of Alzheimer disease. *Arch Neurol*.
10. Thambisetty M, Simmons A, Velayudhan L, Hye A, Campbell J, et al. (2010) Association of plasma clusterin concentration with severity, pathology, and progression in Alzheimer disease. *Arch Gen Psychiatry* 67: 739–748.
11. Thambisetty M, Simmons A, Hye A, Campbell J, Westman E, et al. (2011) Plasma biomarkers of brain atrophy in Alzheimer's disease. *PLoS one* 6: e28527.
12. Thambisetty M, An Y, Kinsey A, Koka D, Saleem M, et al. (2012) Plasma clusterin concentration is associated with longitudinal brain atrophy in mild cognitive impairment. *Neuroimage* 59: 212–217.
13. Thambisetty M, Hye A, Foy C, Daly E, Glover A, et al. (2008) Proteome-based identification of plasma proteins associated with hippocampal metabolism in early Alzheimer's disease. *J Neurol* 255: 1712–1720.
14. Thambisetty M, Tripaldi R, Riddoch-Contreras J, Hye A, An Y, et al. (2010) Proteome-based plasma markers of brain amyloid- β deposition in non-demented older individuals. *J Alzheimers Dis* 22: 1099–1109.
15. Gupta VB, Laws SM, Villemagne VL, Ames D, Bush AI, et al. (2011) Plasma apolipoprotein E and Alzheimer disease risk: the AIBL study of aging. *Neurology* 76: 1091–1098.
16. Jagust WJ, Bandy D, Chen K, Foster NL, Landau SM, et al. (2010) The Alzheimer's Disease Neuroimaging Initiative positron emission tomography core. *Alzheimers Dement* 6: 221–229.
17. Slioter AJ, de Knijff P, Hofman A, Cruts M, Breteler MM, et al. (1998) Serum apolipoprotein E level is not increased in Alzheimer's disease: the Rotterdam study. *Neurosci Lett* 248: 21–24.
18. Siest G, Bertrand P, Qin B, Herbeth B, Serot JM, et al. (2000) Apolipoprotein E polymorphism and serum concentration in Alzheimer's disease in nine European centres: the ApoEurope study. *Clin Chem Lab Med* 38: 721–730.
19. Evans AE, Zhang W, Moreel JF, Bard JM, Ricard S, et al. (1993) Polymorphisms of the apolipoprotein E genes and their relationship to plasma lipid variables in healthy Chinese men. *Hum Genet* 92: 191–197.
20. Johnstone D, Milward EA, Berretta R, Moscato P, ADNI (2012) Multivariate protein signatures of pre-clinical Alzheimers disease in the Alzheimers Disease Neuroimaging Initiative (ADNI) plasma proteome dataset. *PLoS one* 7: e34341.
21. Ewers M, Insel P, Jagust WJ, Shaw L, Trojanowski JQ, et al. (2012) CSF Biomarker and PIBPET-Derived Beta-Amyloid Signature Predicts Metabolic, Gray Matter, and Cognitive Changes in Nondemented Subjects. *Cerebral Cortex* 22: 1993–2004.
22. Lunnon K, Ibrahim Z, Proitsi P, Lourdasamy A, Newhouse S, et al. (2012) Mitochondrial Dysfunction and Immune Activation are Detectable in Early Alzheimers Disease Blood. *J Alz Dis* 30: 685–710.
23. Maier M, Peng Y, Jiang L, Seabrook TJ, Carroll MC, et al. (2008) Complement C3 deficiency leads to accelerated amyloid β plaque deposition and neurodegeneration and modulation of the microglia/macrophage phenotype in amyloid precursor protein transgenic mice. *J Neurosci* 28: 6333–6341.
24. Wetterling T, Tegtmeyer KF (1994) Serum alpha 1-antitrypsin and alpha 2-macroglobulin in Alzheimer's and Binswanger's disease. *Clin Invest* 72: 196–199.
25. Bemelmans KJ, Noort A, Rijk RD, Middelkoop HAM, Kempen GMJV, et al. (2007) Plasma cortisol and norepinephrine in Alzheimer's disease: opposite relations with recall performance and stage of progression. *Acta Neuropsychiatr* 19: 231–237.
26. Lee BK, Glass TA, Wand GS, McAtee MJ, Bandeen-Roche K, et al. (2008) Apolipoprotein E genotype, cortisol, and cognitive function in community-dwelling older adults. *Am J Psychiat* 165: 1456–1464.
27. Ray S, Britschgi M, Herbert C, Takeda-Uchimura Y, Boxer A, et al. (2007) Classification and prediction of clinical Alzheimers diagnosis based on plasma signaling proteins. *Nat Med* 13: 1359–1362.
28. Lorenzl S, Albers DS, Relkin N, Ngyuen T, Hilgenberg SL, et al. (2003) Increased plasma levels of matrix metalloproteinase-9 in patients with Alzheimer's disease. *Neurochem Int* 43: 191–196.
29. O'Bryant SE, Xiao G, Barber R, Huebinger R, Wilhelmsen K, et al. (2011) A Blood-Based Screening Tool for Alzheimer's Disease That Spans Serum and Plasma: Findings from TARC and ADNI. *PLoS one* 6: e28092.
30. Nishiyama E, Iwamoto N, Kimura M, Arai H (1996) Serum amyloid P component level in Alzheimer's disease. *Dementia* 7: 256–259.
31. OBryant SE, Xiao G, Barber R, Reisch J, Doody R, et al. (2010) A serum protein-based algorithm for the detection of Alzheimer disease. *Arch Neurol* 67: 1077–1081.

Table S3 Association of markers with AD phenotypes. (PDF)

Acknowledgments

We are grateful to peer-reviewers, whose suggestions helped us to refine this manuscript.

Data used in preparation of this article were obtained from the Alzheimers Disease Neuroimaging Initiative (ADNI) database (adni.loni.ucla.edu). As such, the investigators within the ADNI contributed to the design and implementation of ADNI and/or provided data but did not participate in analysis or writing of this report. A complete listing of ADNI investigators can be found at: http://adni.loni.ucla.edu/wp-content/uploads/how_to_apply/ADNI_Acknowledgement_List.pdf.

Author Contributions

Conceived and designed the experiments: M. Thambisetty AS SL SN RD. Analyzed the data: SJK. Wrote the paper: SJK M. Thambisetty AS SN RD. APOE measurements in AddNeuroMed and DCR: JRC AH IP MW MKL KL. Input on image analysis: EW. Provided cluster computing support: CJ. AddNeuroMed clinical centre lead: HS IK M. Tsolaki BV PM.

32. Mold M, Shrive A (2012) Serum amyloid P component accelerates the formation and enhances the stability of amyloid fibrils in a physiologically significant under-saturated solution of amyloid-A β 42. *J Alzheimers Dis* 29: 875–881.
33. de la Monte SM, Wands JR (2005) Review of insulin and insulin-like growth factor expression, signaling, and malfunction in the central nervous system: relevance to Alzheimer's disease. *J Alzheimers Dis* 7: 45–61.
34. Zambrano A, Oth C, Mujica L, Concha H, Maccioni RB (2007) Interleukin-3 prevents neuronal death induced by amyloid peptide. *BMC Neurosci* 8: 82.
35. Greco SJ, Sarkar S, Johnston JM, Tezapsidis N (2009) Leptin regulates tau phosphorylation and amyloid through AMPK in neuronal cells. *Biochem Bioph Res Co* 380: 98–104.
36. Szczepanik AM, Funes S, Petko W, Ringheim GE (2001) IL-4, IL-10 and IL-13 modulate A β (1-42)-induced cytokine and chemokine production in primary murine microglia and a human monocyte cell line. *J Neuroimmunol* 113: 49–62.
37. Bell RD, Winkler EA, Singh I, Sagare AP, Deane R, et al. (2012) Apolipoprotein E controls cerebrovascular integrity via cyclophilin A. *Nature* 485: 512–516.
38. Kohavi R (1995) A study of cross-validation and bootstrap for accuracy estimation and model selection. *Proceedings of IJCAI'95* 2: 1137–1143.
39. Alzheimers Association (2004) Research consent for cognitively impaired adults: recommendations for institutional review boards and investigators. *Alzheimer Dis Assoc Disord* 18: 171–175.
40. Vemuri P, Wiste HJ, Weigand SD, Shaw LM, Trojanowski JQ, et al. (2009) MRI and CSF biomarkers in normal, MCI, and AD subjects: diagnostic discrimination and cognitive correlations. *Neurology* 73: 287–297.
41. Trojanowski JQ, Vandeerstichele H, Korecka M, Clark CM, Aisen PS, et al. (2010) Update on the biomarker core of the Alzheimer's Disease Neuroimaging Initiative subjects. *Alzheimers Dement* 6: 230–238.
42. Jagust WJ, Landau SM, Shaw LM, Trojanowski JQ, Koeppe RA, et al. (2009) Relationships between biomarkers in aging and dementia. *Neurology* 73: 1193.
43. R Development Core Team (2011) R: A Language and Environment for Statistical Computing. R Foundation for Statistical Computing, Vienna, Austria. URL <http://www.R-project.org>. ISBN 3-900051-07-0.
44. Simmons A, Westman E, Muehlboeck S, Mecocci P, Vellas B, et al. (2009) MRI measures of Alzheimers disease and the AddNeuroMed study. *Ann NY Acad Sci* 1180: 47–55.
45. Simmons A, Westman E, Muehlboeck S, Mecocci P, Vellas B, et al. (2011) The AddNeuroMed framework for multi-centre MRI assessment of longitudinal changes in Alzheimers disease : experience from the first 24 months. *Int J Ger Psych* 26: 75–82.
46. Westman E, Muehlboeck JS, Simmons A (2012) Combining MRI and CSF measures for classification of Alzheimer's disease and prediction of mild cognitive impairment conversion. *Neuroimage* 62: 229–238.
47. Westman E, Aguilar C, Muehlboeck JS, Simmons A (In press) Regional magnetic resonance imaging measures for multivariate analysis in Alzheimers disease and mild cognitive impairment. *Brain Topogr* DOI: 10.1007/s10548-012-0246-x.
48. Kim S (2011) ppcor: Partial and Semi-partial (Part) correlation. The Comprehensive R Archive Network website. URL <http://CRAN.R-project.org/package=ppcor>. Accessed 2012 August 17. R package version 0.9-38.
49. Warnes GR, Bolker B, Bonebakker L, Gentleman R, Huber W, et al. (2011) gplots: Various R programming tools for plotting data. The Comprehensive R Archive Network website. URL <http://CRAN.R-project.org/package=gplots>. Accessed 2012 August 17. R package version 0.9-38.
50. Stevenson M, Nunes T, Sanchez J, Thornton R, Reiczigel J, et al. (2012) epiR: An R package for the analysis of epidemiological data. The Comprehensive R Archive Network website. URL <http://CRAN.R-project.org/package=epiR>. Accessed 2012 August 17. R package version 0.9-38.
51. Lindeman RH, Merenda PF, Gold RZ (1980) Introduction to Bivariate and Multivariate Analysis. Scott Foreman, Glenview, IL, 120–127.
52. Grömping U (2006) Relative importance for linear regression in R: the package relaimpo. *J Stat Softw* 17: 1–27.
53. Lovestone S, Francis P, Kloszewska I, Mecocci P, Simmons A, et al. (2009) AddNeuroMed – the European collaboration for the discovery of novel biomarkers for Alzheimer's disease. *Ann NY Acad Sci* 1180: 36–46.