

UC Berkeley

UC Berkeley Previously Published Works

Title

Gross ecosystem photosynthesis causes a diurnal pattern in methane emission from rice

Permalink

<https://escholarship.org/uc/item/9r15m2wj>

Journal

Geophysical Research Letters, 39(6)

ISSN

0094-8276

Authors

Hatala, Jaclyn A
Detto, Matteo
Baldocchi, Dennis D

Publication Date

2012-03-28

DOI

10.1029/2012gl051303

Peer reviewed

Gross ecosystem photosynthesis causes a diurnal pattern in methane emission from rice

Jaclyn A. Hatala,¹ Matteo Detto,^{1,2} and Dennis D. Baldocchi¹

Received 9 February 2012; revised 5 March 2012; accepted 6 March 2012; published 30 March 2012.

[1] Understanding the relative contribution of environmental and substrate controls on rice paddy methanogenesis is critical for developing mechanistic models of landscape-scale methane (CH₄) flux. A diurnal pattern in observed rice paddy CH₄ flux has been attributed to fluctuations in soil temperature physically driving diffusive CH₄ transport from the soil to atmosphere. Here we make direct landscape-scale measurements of carbon dioxide and CH₄ fluxes and show that gross ecosystem photosynthesis (GEP) is the dominant cause of the diurnal pattern in CH₄ flux, even after accounting for the effects of soil temperature. The time series of GEP and CH₄ flux show strong spectral coherency throughout the rice growing season at the diurnal timescale, where the peak in GEP leads that of CH₄ flux by 1.3 ± 0.08 hours. By applying the method of conditional Granger causality in the spectral domain, we demonstrated that the diurnal pattern in CH₄ flux is primarily caused by GEP. **Citation:** Hatala, J. A., M. Detto, and D. D. Baldocchi (2012), Gross ecosystem photosynthesis causes a diurnal pattern in methane emission from rice, *Geophys. Res. Lett.*, 39, L06409, doi:10.1029/2012GL051303.

1. Introduction

[2] Rice is the dominant staple food crop for over 5 billion people worldwide [Hossain and Narcisco, 2005] and contributes 11% of annual global methane (CH₄) emissions [Smith et al., 2007]. Constraining carbon turnover times in rice paddy agroecosystems is particularly important for improving mechanistic predictions of CH₄ flux magnitude and timing. A diurnal pattern in CH₄ emissions from rice paddies has previously been attributed to daily fluctuations in temperature physically driving diffusive CH₄ transport [Denier van der Gon and van Breemen, 1993; Hosono and Nouchi, 1997; Schütz et al., 1989]. Methanogens in rice paddy soils only produce CH₄ in reduced soil conditions [Conrad, 2007], and as a result many models treat CH₄ flux as a function of temperature and redox potential [Li, 2000].

[3] However, ecosystem CH₄ flux not only depends on physiochemical environmental conditions, but is also highly regulated by the ecological function of rice plants. Rice plants provide the dominant transport mechanism for CH₄ flux from soil to atmosphere by diffusive emission through their porous aerenchyma tissue [Cicerone and Shetter, 1981; Holzapfel-Pschorn et al., 1986; Nouchi et al., 1990] and they are the primary source of carbon substrates for metha-

nogenic metabolism on a range of timescales [Cicerone et al., 1992; Holzapfel-Pschorn et al., 1986; Huang et al., 1997; Minoda et al., 1996; Sass et al., 2002]. Net ecosystem production is highly correlated with CH₄ flux across a range of climatically diverse wetlands, indicating that substrate supply is an important control on the magnitude of CH₄ flux [Whiting and Chanton, 1993]. Stable isotope labeling studies in controlled laboratory settings have revealed a strong transient link between rice photosynthesis and CH₄ flux, with time lags between plant carbon dioxide (CO₂) assimilation and CH₄ emission from 2 hours to 3 days [Dannenberg and Conrad, 1999; Minoda and Kimura, 1994; Minoda et al., 1996].

[4] While there is a clear link between plant productivity and CH₄ flux at the plant and plot scale, the mechanisms controlling short-term CH₄ flux in the field remain unclear based on a history of CH₄ fluxes measured with soil chambers. Diurnal coupling between photosynthesis and heterotrophic microbial respiration is an emergent property of many ecosystems [Kuzyakov et al., 2000; Vargas et al., 2010], although most chamber-based studies that directly measure CH₄ flux are not accompanied by simultaneous measurements of photosynthesis. In this analysis, we tested the hypothesis that daily carbon substrate supply by rice photosynthesis, not soil temperature, causes the diurnal pattern in rice paddy CH₄ flux by using the eddy covariance technique to measure fluxes of CO₂, CH₄, and evaporation [Baldocchi et al., 1988] over the course of a rice growing season.

2. Methods

[5] We examined the relative roles of gross ecosystem photosynthesis (GEP) and soil temperature in modulating the temporal spectrum of CH₄ flux with high frequency micrometeorological data collected continuously over the course of a growing season. We measured landscape-scale fluxes of CO₂, H₂O, CH₄, and energy at a rice paddy located on Twitchell Island, CA, USA (latitude: 38.1087°N, longitude: 121.6530°W; elevation: 4 m below sea level) from the emergence of rice seedlings on 15 June 2011 to harvest on 15 October 2011. The water table at the field was maintained at 5 cm above the soil surface for the duration of the growing season. Winds during the study period were strong in magnitude and stable in direction where the 90% flux area footprint fell entirely within the bounds of the rice paddy. We measured soil temperature at 2 cm depth below the soil surface with three replicate copper-constantan thermocouples at a rate of 0.2 Hz, recorded as half-hourly averages. At a height of 3.05 m and a rate of 10 Hz, we measured 3-dimensional wind velocities (u , v , w) with a sonic anemometer (Gill WindMaster Pro; Gill Instruments Ltd,

¹Ecosystem Science Division, Department of Environmental Science, Policy and Management, University of California, Berkeley, California, USA.

²Now at Smithsonian Tropical Research Institute, Balboa, Panama.

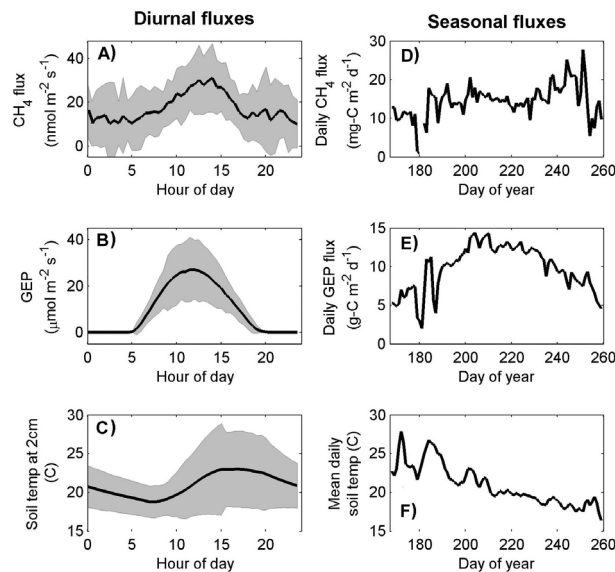


Figure 1. (a) CH₄ flux, (b) gross ecosystem productivity (GEP), and (c) soil temperature at 2 cm depth all demonstrate a diurnal pattern for the duration of the rice growing season, where the solid line represents the growing season mean, and the shaded area represents the growing season standard deviation for each half-hour interval. The diurnal peak in GEP leads that of CH₄ flux, soil temperature, and evaporation, indicating that GEP is a more likely driver of the daily peak in CH₄ flux than soil temperature. The trend across the growing season for (d) CH₄ flux, (e) GEP, and (f) soil temperature at 2 cm depth. GEP shows strong seasonality with a mid-summer peak, while CH₄ flux increases throughout the growing season and soil temperature decreases over the course of the season. Low values of GEP at day of year 178–180 are caused by the application of a general herbicide to the field to control the growth of weeds with a concomitant decrease in CH₄ flux, indicating a strong link between these two variables.

Lymington, Hampshire, England), CO₂ and H₂O density with an open-path infrared gas analyzer (LI-7500; LI-COR Biogeosciences, Lincoln NE, USA), and CH₄ density with a closed-path tunable diode laser CH₄ analyzer (FMA, Los Gatos Research, CA, USA). This sampling rate allowed for a 5 Hz cut-off for the co-spectra between the scalars (CO₂, CH₄, H₂O) and turbulence, which was adequate for eddy covariance measurements at this site [Detto *et al.*, 2011]. Additional micrometeorological instrumentation (air temperature, humidity, barometric pressure, incoming and net radiation, precipitation, and water table depth) is detailed by Hatala *et al.* [2012].

[6] Using standard eddy covariance processing techniques, we analyzed fluxes of CO₂, H₂O, CH₄, and heat after applying corrections with in-house software [Detto *et al.*, 2010] explained in detail by Hatala *et al.* [2012]. Briefly, the procedure removed artificial data spikes (greater than six standard deviations from the mean) from the 10 Hz data and filtered bad readings that resulted from very infrequent fog events. For each 30-minute block of 10 Hz values, we applied a coordinate rotation to align the mean vertical and lateral wind velocities to zero and removed effects of air density fluctuations by the Webb-Pearman-Leuning

correction [Detto and Katul, 2007; Webb *et al.*, 1980]. We applied co-spectral corrections to CO₂, H₂O, and CH₄ fluxes to account for sensor separation, and additional co-spectral corrections to CH₄ fluxes to correct for tube attenuation, residence time in the analyzer cell, and small changes in analyzer flow rate [Detto *et al.*, 2011]. We filtered 30-minute flux values with anomalously high and low friction velocity ($u^* > 1.2$ m/s and $|uw| < 0.02$ m/s) to constrain our analysis to periods where the air near the sensors was well-mixed. Of all possible 30-minute flux values during the growing season period in this analysis, 9% of CO₂, H₂O, and CH₄ fluxes were eliminated due to low friction velocity and an additional 10% of half-hourly CH₄ fluxes were not available due to brief FMA sensor malfunction.

[7] We gap-filled CO₂ fluxes using an artificial neural network approach standardized within the international Fluxnet project with meteorological variables driving the fitting [Papale *et al.*, 2006]. To partition CO₂ fluxes into gross ecosystem photosynthesis (GEP) and ecosystem respiration (R_{eco}), we extrapolated nighttime CO₂ flux as R_{eco} using a short-term (2 week) 2 cm-depth soil temperature response and subtracted daytime R_{eco} from net CO₂ flux to obtain GEP [Reichstein *et al.*, 2005]. To avoid spurious correlations between CH₄ flux and GEP, we did not gap-fill CH₄ flux data with the artificial neural network technique, and instead replaced missing values with the median for the entire growing season. There were no gaps in the soil temperature time series for this measurement period. For spectral analysis, we standardized the CH₄ flux, GEP, and soil temperature time series to have zero mean and unit variance.

2.1. Spectral Analysis Methods

[8] We used the continuous wavelet transform (CWT) with the Morlet mother wavelet to examine correlation between the spectra of GEP, CH₄ flux, and soil temperature [Torrence and Compo, 1998]. Compared with Fourier analysis, wavelet spectral analysis is a more powerful tool for analyzing geophysical time series with nonstationarity, including trace-gas flux data measured by eddy covariance [Katul *et al.*, 2001; Vargas *et al.*, 2010]. The wavelet coherence spectrum is interpreted as the local correlation between two variables in frequency-time space where high coherence indicates phase-locked behavior between the two time series [Grinsted *et al.*, 2004]. We tested the statistical significance of wavelet power against the null hypothesis of a red noise first order autoregressive process with lag-1 autocorrelation [Grinsted *et al.*, 2004]. For time periods with significant wavelet coherence, we used the phase angle to calculate the time lag between the correlated oscillations of the two series.

[9] We used the method of Granger causality to determine whether the patterns of wavelet coherence between the time series of GEP and temperature and CH₄ flux represented causal relationships. Granger causality is a method whereby a time series of one variable is determined to cause a second time series if it can successfully be used to predict the response of the second lagged time series [Granger, 1988], and here we applied the principles of conditional Granger causality to the nonparametric spectral domain [Chen *et al.*, 2006; Dhamala *et al.*, 2008] (auxiliary material).¹ We tested

¹Auxiliary materials are available in the HTML. doi:10.1029/2012GL051303.

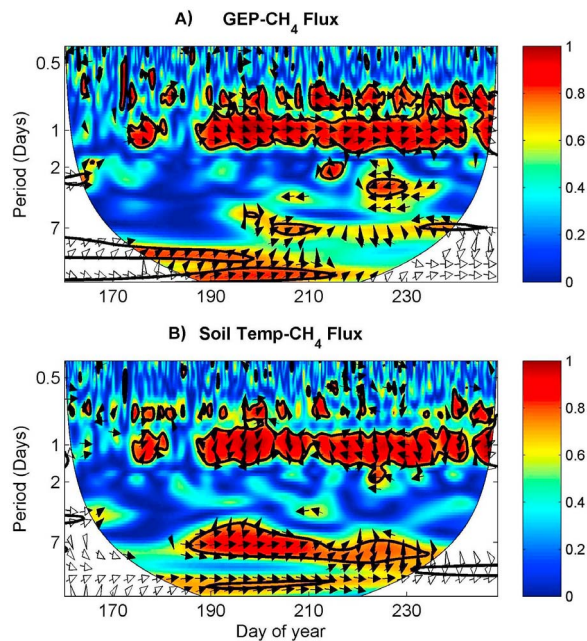


Figure 2. (a) The wavelet coherence between GEP and CH₄ flux for the rice paddy growing season shows high in-phase coherence between the two time series at the daily timescale for the duration of the growing season, and lower periodic coherence at the 18 hour, weekly, and bi-weekly timescales. (b) Soil temperature and CH₄ flux have the highest coherency at the daily and weekly timescale, whereas soil temperature and GEP are coherent at the daily timescale. Significant coherence (at the 5% level with 1000 Monte Carlo simulations of AR-1 autocorrelation) is indicated by the bold black lines. The direction of arrows indicate the phase angle between the two time series, where an arrow with an inclination of zero pointed to the right indicates zero lag (the series are perfectly correlated). The cone of influence represents the limit where wavelet power dropped to e^{-2} of the edge values.

the significance of nonparametric Granger causality against the null hypothesis that no direct interaction exists by the iterative amplitude adjusted Fourier transform, which preserves the power spectrum and distribution of the original time series but eliminates the correlation structure [Molini *et al.*, 2010]. We tested the hypothesis that the periodic signal of GEP caused a periodic response in CH₄ flux after we conditioned the response for the effect of soil temperature on CH₄ flux. Support for this hypothesis indicates that GEP modulates CH₄ flux at the time lags indicated by the spectral analysis.

3. Results and Discussion

[10] GEP, CH₄ flux, and soil temperature all demonstrated a strong diurnal pattern for the duration of the growing season, where the daily peak in GEP leads that of CH₄ flux and soil temperature (Figures 1a–1c). The mean growing season peak in GEP occurred in late morning at 11:00 hours, the mean peak in soil temperature occurred in late afternoon at 16:30 hours, and the mean peak in CH₄ flux occurred in mid-afternoon at 14:30 hours. If either GEP or soil temperature are driving the diurnal pattern in CH₄ flux, we would predict that the diurnal peak of GEP or soil temperature would temporally lead the peak in CH₄ flux. However, this is not the case, as GEP leads CH₄ flux, but the peak in soil temperature lags both of these variables. All variables also demonstrate coherent seasonal trends, where GEP peaks mid-season, CH₄ flux increases and soil temperature at 2 cm depth decreases throughout the season (Figures 1d–1f). The contrary seasonal pattern of decreasing soil temperature but increasing CH₄ flux provides further evidence that soil temperature might not be driving CH₄ flux. The application of a general herbicide for weed control in the field at day of year 179 caused a sharp decline in GEP (Figure 1e) with a concomitant decrease in CH₄ flux (Figure 1d), also providing qualitative mechanistic insight regarding the strong control of GEP on CH₄ emission.

[11] We examined the wavelet coherence spectra [Grinsted *et al.*, 2004; Torrence and Compo, 1998] to determine the dominant timescales and strength of

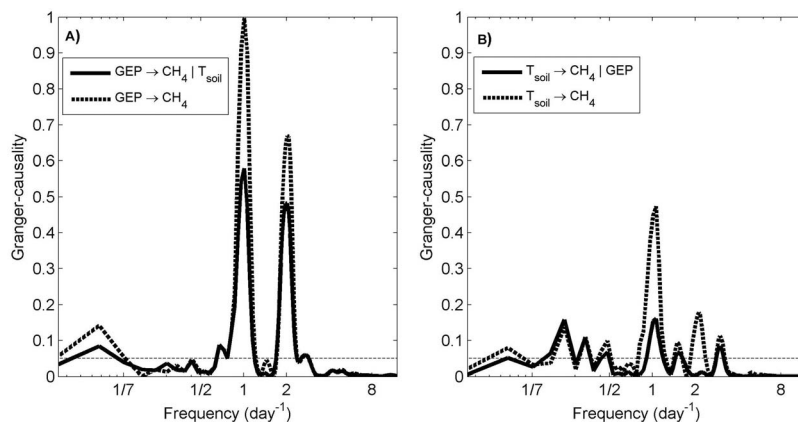


Figure 3. The Granger-causality spectra are plotted for the causal relationships between (a) GEP and (b) soil temperature and CH₄ flux. When conditioned on soil temperature, GEP still has a strong causal relationship with CH₄ flux at the daily timescale. Conversely, when soil temperature is conditioned on GEP the Granger-causality at the daily timescale becomes insignificant, although temperature is still a significant driver of CH₄ flux for frequencies smaller than 0.5 day^{-1} .

coupling between CH₄ flux and GEP and soil temperature. GEP and CH₄ flux are strongly coherent throughout the growing season at the daily timescale, where the mean lag time with 95% confidence interval is 1.3 ± 0.08 hours (0.350 ± 0.021 radians) (Figure 2a). The soil temperature and CH₄ flux time series are also significantly coherent at the daily period (Figure 2b), however soil temperature lags CH₄ flux by 5.5 ± 0.1 hours (-1.47 ± 0.030 radians). The soil temperature-CH₄ flux wavelet coherence is also significantly coherent at the weekly time period (Figure 2b), and the mean time lag here is 14 ± 1.8 hours (0.52 ± 0.079 radians). Although both GEP and soil temperature are correlated with CH₄ flux at multiple timescales, strong coherencies occur at the daily timescale that are maintained for the duration of the growing season. Soil temperature is also highly correlated with CH₄ flux at the weekly period, which might indicate a relationship where soil temperature drives kinetic rate changes in CH₄ flux on longer timescales.

[12] From the spectral Granger causality analysis, we found strong support for the hypothesis that GEP modulates CH₄ flux at the daily timescale. The GEP-CH₄ flux Granger causality spectrum (Figure 3a) shows strong power at the daily timescale as well as at the harmonic 12-hour timescale after accounting for the effects of soil temperature on CH₄ flux. The spectrum of GEP-induced CH₄ flux demonstrates that carbon cycling between plants and methanogens occurs rapidly with a coherent temporal pattern that is maintained for the duration of the growing season. We also tested the alternative hypothesis that soil temperature causes a diurnal pattern in CH₄ flux, and conditioned this relationship on GEP. Soil temperature modulates CH₄ flux over a longer five-day timescale and demonstrates a much weaker daily signal than that of GEP-induced CH₄ flux (Figure 3b). Since a few observations have suggested that stomatal conductance might drive CH₄ flux [Chanton *et al.*, 1997], we tested but did not find strong support for this other alternate mechanism (auxiliary material).

4. Conclusions

[13] Understanding the temporal lags of carbon turnover from plants to methanogens is essential for scaling methanogenesis to ecosystem-level CH₄ flux. Our analysis concludes that in rice, CH₄ flux rapidly response to GEP in a coherent pattern for the duration of the growing season. Although this analysis is conducted in a spatially homogeneous rice paddy, it may yield insight into the high-frequency mechanisms that contribute to variability in CH₄ flux measurements at spatially heterogeneous sites. For example, if photosynthetic rates vary across the landscape and high-frequency CH₄ flux is driven by GEP, accurately measuring and modeling photosynthesis might help explain at least some of the heterogeneity in CH₄ flux. The diurnal pattern of GEP-regulated CH₄ fluxes also has direct implications for the daily and seasonal extrapolation of studies that measure only daytime CH₄ flux, due to an inability to account for diurnal variation in CH₄ flux due to changes in GEP. Furthermore, the strong connection between GEP and CH₄ flux found in this study highlights a possible trade-off in using flooded ecosystems for carbon capture and sequestration, a subject of research that warrants further study at other sites. This analysis re-examines assumptions about the importance of biotic and abiotic factors in

regulating landscape-scale CH₄ flux on the timescale of hours to days, and concludes that gross ecosystem photosynthesis is the primary cause of the diurnal pattern in rice paddy CH₄ flux.

[14] **Acknowledgments.** The authors thank the California Department of Water Resources for access to the field site and Joseph Verfaillie for organizing instrumentation and data collection. J.A.H. was funded by the National Science Foundation Graduate Research Fellowship. This research was supported by National Science Foundation ATM grant AGS-0628720 and the California Department of Water Resources grant 006550.

[15] The Editor thanks an anonymous reviewer for their assistance in evaluating this paper.

References

- Baldocchi, D. D., B. B. Hicks, and T. P. Meyers (1988), Measuring biosphere-atmosphere exchanges of biologically related gases with micrometeorological methods, *Ecology*, *69*(5), 1331–1340, doi:10.2307/1941631.
- Chanton, J. P., G. J. Whiting, N. E. Blair, C. W. Lindau, and P. K. Bollich (1997), Methane emission from rice: Stable isotopes, diurnal variations, and CO₂ exchange, *Global Biogeochem. Cycles*, *11*(1), 15–27, doi:10.1029/96GB03761.
- Chen, Y. H., S. L. Bressler, and M. Z. Ding (2006), Frequency decomposition of conditional Granger causality and application to multivariate neural field potential data, *J. Neurosci. Methods*, *150*(2), 228–237, doi:10.1016/j.jneumeth.2005.06.011.
- Cicerone, R. J., and J. D. Shetter (1981), Sources of atmospheric methane: Measurements in rice paddies and a discussion, *J. Geophys. Res.*, *86*(C8), 7203–7209, doi:10.1029/JC086iC08p07203.
- Cicerone, R. J., C. C. Delwiche, S. C. Tyler, and P. R. Zimmerman (1992), Methane emissions from California rice paddies with varied treatments, *Global Biogeochem. Cycles*, *6*(3), 233–248, doi:10.1029/92GB01412.
- Conrad, R. (2007), Microbial ecology of methanogens and methanotrophs, *Adv. Agron.*, *96*, 1–63, doi:10.1016/S0065-2113(07)96005-8.
- Dannenberg, S., and R. Conrad (1999), Effect of rice plants on methane production and rhizospheric metabolism in paddy soil, *Biogeochemistry*, *45*(1), 53–71, doi:10.1007/BF00992873.
- Denier van der Gon, H. A. C., and N. van Breemen (1993), Diffusion-controlled transport of methane from soil to atmosphere as mediated by rice plants, *Biogeochemistry*, *21*(3), 177–190.
- Detto, M., and G. G. Katul (2007), Simplified expressions for adjusting higher-order turbulent statistics obtained from open path gas analyzers, *Boundary Layer Meteorol.*, *122*(1), 205–216, doi:10.1007/s10546-006-9105-1.
- Detto, M., D. Baldocchi, and G. G. Katul (2010), Scaling properties of biologically active scalar concentration fluctuations in the atmospheric surface layer over a managed peatland, *Boundary Layer Meteorol.*, *136*(3), 407–430, doi:10.1007/s10546-010-9514-z.
- Detto, M., J. Verfaillie, F. Anderson, L. Xu, and D. Baldocchi (2011), Comparing laser-based open- and closed-path gas analyzers to measure methane fluxes using the eddy covariance method, *Agric. For. Meteorol.*, *151*(10), 1312–1324, doi:10.1016/j.agrformet.2011.05.014.
- Dhamala, M., G. Rangarajan, and M. Ding (2008), Estimating granger causality from fourier and wavelet transforms of time series data, *Phys. Rev. Lett.*, *100*(1), 018701, doi:10.1103/PhysRevLett.100.018701.
- Granger, C. W. J. (1988), Some recent development in a concept of causality, *J. Econometrics*, *39*(1–2), 199–211, doi:10.1016/0304-4076(88)90045-0.
- Grinsted, A., J. C. Moore, and S. Jevrejeva (2004), Application of the cross wavelet transform and wavelet coherence to geophysical time series, *Nonlinear Processes Geophys.*, *11*(5–6), 561–566, doi:10.5194/npg-11-561-2004.
- Hatala, J. A., M. Detto, O. Sonnentag, S. J. Deverel, J. Verfaillie, and D. Baldocchi (2012), Greenhouse gas (CO₂, CH₄, H₂O) fluxes from drained and flooded agricultural peatlands in the Sacramento-San Joaquin Delta, *Agric. Ecosyst. Environ.*, *150*, 1–18, doi:10.1016/j.agee.2012.01.009.
- Holzappel-Pschorn, A., R. Conrad, and W. Seiler (1986), Effects of vegetation on the emission of methane from submerged paddy soil, *Plant Soil*, *92*(2), 223–233, doi:10.1007/BF02372636.
- Hosono, T., and I. Nouchi (1997), The dependence of methane transport in rice plants on the root zone temperature, *Plant Soil*, *191*(2), 233–240, doi:10.1023/A:1004203208686.
- Hossain, M., and J. Narcisco (2005), Global rice economy: Long-term perspectives, in *Proceedings of the FAO Rice Conference 2004: Rice in Global Markets, Rome 12–13 February 2004*, edited by A. Sarris, pp. 1–8, Food and Agric. Organ. of the U. N., Rome.

- Huang, Y. A. O., R. Sass, and F. Fisher (1997), Methane emission from Texas rice paddy soils. 2. Seasonal contribution of rice biomass production to CH₄ emission, *Global Change Biol.*, 3(6), 491–500, doi:10.1046/j.1365-2486.1997.00106.x.
- Katul, G., C. T. Lai, K. Schafer, B. Vidakovic, J. Albertson, D. Ellsworth, and R. Oren (2001), Multiscale analysis of vegetation surface fluxes: From seconds to years, *Adv. Water Resour.*, 24(9–10), 1119–1132, doi:10.1016/S0309-1708(01)00029-X.
- Kuzyakov, Y., J. K. Friedel, and K. Stahr (2000), Review of mechanisms and quantification of priming effects, *Soil Biol. Biochem.*, 32(11–12), 1485–1498, doi:10.1016/S0038-0717(00)00084-5.
- Li, C. S. (2000), Modeling trace gas emissions from agricultural ecosystems, *Nutr. Cycling Agroecosyst.*, 58(1–3), 259–276, doi:10.1023/A:1009859006242.
- Minoda, T., and M. Kimura (1994), Contribution of photosynthesized carbon to the methane emitted from paddy fields, *Geophys. Res. Lett.*, 21(18), 2007–2010, doi:10.1029/94GL01595.
- Minoda, T., M. Kimura, and E. Wada (1996), Photosynthates as dominant source of CH₄ and CO₂ in soil water and CH₄ emitted to the atmosphere from paddy fields, *J. Geophys. Res.*, 101(D15), 21,091–21,097, doi:10.1029/96JD01710.
- Molini, A., G. G. Katul, and A. Porporato (2010), Causality across rainfall time scales revealed by continuous wavelet transforms, *J. Geophys. Res.*, 115, D14123, doi:10.1029/2009JD013016.
- Nouchi, I., S. Mariko, and K. Aoki (1990), Mechanism of methane transport from the rhizosphere to the atmosphere through rice plants, *Plant Physiol.*, 94(1), 59–66, doi:10.1104/pp.94.1.59.
- Papale, D., et al. (2006), Towards a standardized processing of Net Ecosystem Exchange measured with eddy covariance technique: Algorithms and uncertainty estimation, *Biogeosciences*, 3(4), 571–583, doi:10.5194/bg-3-571-2006.
- Reichstein, M., et al. (2005), On the separation of net ecosystem exchange into assimilation and ecosystem respiration: review and improved algorithm, *Global Change Biol.*, 11(9), 1424–1439, doi:10.1111/j.1365-2486.2005.001002.x.
- Sass, R. L., J. A. Andrews, A. Ding, and F. M. Fisher (2002), Spatial and temporal variability in methane emissions from rice paddies: Implications for assessing regional methane budgets, *Nutr. Cycling Agroecosyst.*, 64(1–2), 3–7, doi:10.1023/A:1021107016714.
- Schütz, H., A. Holzapfel-Pschorn, R. Conrad, H. Rennenberg, and W. Seiler (1989), A 3-year continuous record on the influence of daytime, season, and fertilizer treatment on methane emission rates from an Italian rice paddy, *J. Geophys. Res.*, 94(D13), 16,405–16,416, doi:10.1029/JD094iD13p16405.
- Smith, P., et al. (2007), Agriculture, in *Climate Change 2007: Mitigation. Contribution of Working Group III to the Fourth Assessment Report of the Intergovernmental Panel on Climate Change*, edited by B. Metz et al., pp. 497–540, Cambridge Univ. Press, Cambridge, U. K.
- Torrence, C., and G. P. Compo (1998), A practical guide to wavelet analysis, *Bull. Am. Meteorol. Soc.*, 79(1), 61–78, doi:10.1175/1520-0477(1998)079<0061:APGTWA>2.0.CO;2.
- Vargas, R., M. Detto, D. D. Baldocchi, and M. F. Allen (2010), Multiscale analysis of temporal variability of soil CO₂ production as influenced by weather and vegetation, *Global Change Biol.*, 16(5), 1589–1605, doi:10.1111/j.1365-2486.2009.02111.x.
- Webb, E. K., G. I. Pearman, and R. Leuning (1980), Correction of flux measurements for density effects due to heat and water-vapor transfer, *Q. J. R. Meteorol. Soc.*, 106(447), 85–100, doi:10.1002/qj.49710644707.
- Whiting, G. J., and J. P. Chanton (1993), Primary production control of methane emission from wetlands, *Nature*, 364(6440), 794–795, doi:10.1038/364794a0.

D. D. Baldocchi and J. A. Hatala, Ecosystem Science Division, Department of Environmental Science, Policy and Management, University of California, 130 Mulford Hall #3114, Berkeley, CA 94720, USA. (jhatala@berkeley.edu)

M. Detto, Smithsonian Tropical Research Institute, Apartado Postal 0843-03092, Balboa, Ancon Panamá, Panamá.