

# UC Davis

## UC Davis Previously Published Works

### Title

Can OCT Angiography Be Made a Quantitative Blood Measurement Tool?

### Permalink

<https://escholarship.org/uc/item/9qh9v6bm>

### Journal

Applied Sciences, 7(7)

### ISSN

2076-3417

### Authors

Zhu, Jun

Merkle, Conrad W

Bernucci, Marcel T

et al.

### Publication Date

2017-07-01

### DOI

10.3390/app7070687

### Copyright Information

This work is made available under the terms of a Creative Commons Attribution License, available at <https://creativecommons.org/licenses/by/4.0/>

Peer reviewed



# HHS Public Access

Author manuscript

*Appl Sci (Basel)*. Author manuscript; available in PMC 2018 July 12.

Published in final edited form as:

*Appl Sci (Basel)*. 2017 July ; 7(7): . doi:10.3390/app7070687.

## Can OCT Angiography Be Made a Quantitative Blood Measurement Tool?

Jun Zhu<sup>1</sup>, Conrad W. Merkle<sup>1</sup>, Marcel T. Bernucci<sup>1</sup>, Shau Poh Chong<sup>1</sup>, and Vivek J. Srinivasan<sup>1,2,\*</sup>

<sup>1</sup>Department of Biomedical Engineering, University of California Davis, Davis, CA 95616, USA

<sup>2</sup>Department of Ophthalmology and Vision Science, School of Medicine, University of California Davis, Sacramento, CA 95817, USA

### Abstract

Optical Coherence Tomography Angiography (OCTA) refers to a powerful class of OCT scanning protocols and algorithms that selectively enhance the imaging of blood vessel lumens, based mainly on the motion and scattering of red blood cells (RBCs). Though OCTA is widely used in clinical and basic science applications for visualization of perfused blood vessels, OCTA is still primarily a *qualitative* tool. However, more quantitative hemodynamic information would better delineate disease mechanisms, and potentially improve the sensitivity for detecting early stages of disease. Here, we take a broader view of OCTA in the context of microvascular hemodynamics and light scattering. Paying particular attention to the unique challenges presented by capillaries versus larger supplying and draining vessels, we critically assess opportunities and challenges in making OCTA a *quantitative* tool.

### Keywords

optical coherence tomography; angiography; scattering; red blood cells; rheology; imaging; hemodynamics; blood flow

## 1. Introduction

The microcirculation comprises a network of blood vessels that delivers oxygen and nutrients to surrounding tissues, removes waste products and heat, and otherwise supports tissue viability [1–3]. Red blood cells (RBCs) are the main carriers of oxygen in blood.

---

This article is an open access article distributed under the terms and conditions of the Creative Commons Attribution (CC BY) license (<http://creativecommons.org/licenses/by/4.0/>).

\*Correspondence: vjsriniv@ucdavis.edu; Tel.: +1-530-752-9277.

Featured Application: Optical Coherence Tomography Angiography (OCTA) is a technique for label-free vascular imaging in fields such as ophthalmology, gastroenterology, cancer biology, and neuroscience. Here, we discuss advances that relate OCTA more rigorously to underlying blood physiology and hemodynamics, which promise to make OCTA an even more powerful quantitative tool.

**Author Contributions:** Jun Zhu and Vivek J. Srinivasan conceived the paper. Conrad W. Merkle, Marcel T. Bernucci, and Shau Poh Chong generated data for the figures. Conrad W. Merkle and Vivek J. Srinivasan processed the data. Jun Zhu, Conrad W. Merkle, Shau Poh Chong, and Vivek J. Srinivasan made the figures for the paper. All authors wrote and reviewed the paper.

**Conflicts of Interest:** Vivek J. Srinivasan receives royalties from Optovue, Inc.

“Optical Coherence Tomography Angiography (OCTA)” is a term for the specialized Optical Coherence Tomography (OCT) scanning protocols and post-processing algorithms that mainly enhance the motion contrast of red blood cells (RBCs) in OCT images to selectively highlight these vessels. By enabling the visualization of cell-perfused vasculature without an exogenous contrast agent, OCT angiography has generated enormous interest in ophthalmology [4–11], gastroenterology [12,13], cancer biology [14,15], and neuroscience [16,17] over the past decade. It has been particularly useful in studying diseases where the microvascular morphology or presence of perfusion changes over time. However, with few exceptions [18–20], the majority of published studies have used OCT angiography *qualitatively*, primarily as a means of visualization. Here, we review the relevant basic hemodynamic principles, fundamentals of OCTA, categories of OCTA scanning protocols, and classes of OCTA algorithms. We argue that a rigorous and model-based relationship between hemodynamic parameters, light scattering theory, and measurement observables [21] in OCT angiography will pave the way towards more *quantitative* imaging of hemodynamics by OCTA and related methods, with the potential to enhance all applications.

## 2. OCTA Fundamentals

A unifying feature of all OCTA algorithms is that they visualize objects that are both moving and backscattering. Hence, we begin our review with a discussion of hemodynamics and light scattering properties of blood. Importantly, we distinguish between capillaries (<10  $\mu\text{m}$  in diameter), where RBCs flow in a line and hematocrits are low, and macrovasculature, where RBCs flow side-by-side and hematocrits approach systemic levels, with the understanding that non-capillary microvessels (10–100  $\mu\text{m}$  in diameter) represent an intermediate case between the two extremes discussed here [2,3].

### 2.1. Hemodynamic Parameters

What are the main hemodynamic parameters that impact observed OCTA signals? In capillaries (Figure 1A), the RBC flow is single-file, with plasma gaps in between [22,23]. RBC speed (distance/time), flux (#/time), and linear density (#/distance) are thus primary hemodynamic parameters in capillaries. Due to the plasma gaps between cells, flux can often be determined by imaging individual capillaries and counting RBCs traversing a single location [23]. Assuming single-file capillary flow, microvascular tube hematocrit ( $H_{\text{tube}}$ ), or RBC volume fraction, is related to linear density ( $\rho$ ) by  $\rho = H_{\text{tube}}A/V_{\text{RBC}}$ , where  $V_{\text{RBC}}$  is the red blood cell volume and  $A$  is the vessel cross-sectional area. Capillary tube hematocrit is generally a factor of  $\sim 2\text{--}3\times$  lower than systemic levels [24], but hematocrit can vary considerably between capillaries. In macrovessels (Figure 1B), which include supplying arteries and draining veins, the blood velocity varies across the vessel cross-section. In contrast to microvessels, macrovascular hematocrit approaches systemic levels of  $\sim 40\text{--}45\%$  [25]. Flow is typically laminar with some degree of blunting [24], with the largest shear rate, or velocity gradient, at the edge of the vessel. In macrovessels, RBC velocity or speed (distance/time), flow rate (volume/time), and hematocrit (volume/volume) are the primary hemodynamic parameters. All hemodynamic parameters vary over time with respiration and the heartbeat of the subject [24].

## 2.2. Light Scattering from Red Blood Cells

What are the physical properties of RBCs that enable their detection by OCTA? RBC scattering and absorption properties derive from the presence of hemoglobin and its complex refractive index [26]. Major absorption bands of hemoglobin, related to the imaginary part of the complex refractive index, predominate at visible and shorter wavelengths, while hemoglobin absorption becomes negligible at near-infrared wavelengths, where scattering dominates. The light scattering properties of individual RBCs are determined by the refractive index contrast with respect to the surrounding plasma, as well as their shape and size relative to the medium wavelength. The real part of the complex refractive index, or refractive index, of hemoglobin is larger by ~3–6% relative to the surrounding plasma [26–28]. RBCs are biconcave disks (Figure 2), with a diameter of 6–8  $\mu\text{m}$  and thickness of ~2  $\mu\text{m}$ , although their shape changes under external stress. Due to the large volume fraction of RBCs and their refractive index mismatch relative to plasma, RBCs are the main scattering constituent in blood [27,29,30].

The scattering properties of both individual RBCs and ensembles of RBCs are important in OCTA. Due to their irregular shape, the probability of light scattering in a given direction for a particular RBC depends on both its orientation and the direction of incident light. An ensemble of RBCs with different orientations can be characterized by a scattering coefficient ( $\mu_s$ ), the scattering probability per unit distance; a scattering phase function ( $P(\theta)$ ), the probability of scattering in a given elevation direction  $\theta$  per unit solid angle; and a scattering anisotropy ( $g = E[\cos(\theta)]$ ), the expectation or average ( $E[\ ]$ ) of  $\cos(\theta)$  over solid angle. These parameters characterize scattering of whole blood, which comprises an ensemble volume of RBCs with random orientations. In whole blood, empirically measured  $g$  and  $\mu_s$  include dependent and multiple scattering effects [31]. With a hematocrit of around 45%, whole blood is found to be highly forward scattering between 750 and 950 nm, with a scattering coefficient ( $\mu_s$ ) between 65 and 80  $\text{mm}^{-1}$ , and anisotropy ( $g$ ) between 0.97 and 0.99 [29,32–34]. Exemplary phase functions [30,32,35] for tissue (Heney-Greenstein with  $g = 0.9$ ) and blood (Gegenbauer-Kernel with  $g = 0.972$  and  $\alpha = 0.49$  [36]) are shown in Figure 2A on a logarithmic scale. Tissue has a higher probability of back scattering than blood, while blood is considerably more forward scattering.

In OCTA (Figure 2B,C), detected light ideally results from paths with single RBC backscattering ( $\theta = 180^\circ$ ) events (blue). However, the high RBC anisotropy (Figure 2A) makes detection of multiple scattered light (green) likely. Probable light paths can be understood through the principles of radiative transport. In capillaries, where RBC flow is single-file, light forward scattered from RBCs is also backscattered from extravascular tissue (Figure 2B), creating axial multiple scattering tails (Figure 2D left box). In macrovessels, there are two important effects. First, RBCs tend to align their flat face parallel to the shear force, i.e., facing outwards along the vessel circumference (Figure 2C). The largest backscattering cross-section occurs when the shortest RBC dimension is aligned with the incident light. Therefore, the signal is enhanced at the top and bottom of the vessel lumen and reduced at the side (Figure 2D right box) [37]. At higher shear rates, RBCs elongate and the backscattering pattern disappears [38]. Second, for vessel lumens larger than a scattering

length ( $1/\mu_s$ ), multiple intravascular dynamic scattering events (green) can occur before detection.

As OCTA images are created by post-processing OCT data, OCTA has an image penetration depth comparable to or less than OCT. This is typically  $\sim 0.5$ – $1.5$  mm in most tissues, depending on the source wavelength and the sample optical properties [39,40]. It is important to note that while OCTA visualizes blood vessels, the penetration depth of OCTA may be determined by the attenuation of both intravascular and extravascular tissue.

### 3. OCTA Signal

In this section, we provide a unifying framework for the OCT signal to facilitate the discussion of OCTA algorithms in Section 4. Commonly-used symbols or variables and their definitions are summarized in Table 1, while other symbols are defined in the text.

All standard OCTA algorithms [41,42] start from the complex OCT signal. The complex, depth-resolved OCT signal can be expressed as:

$$S(x, z, t) = |S(x, z, t)| \exp \{i \varnothing(x, z, t)\}. \quad (1)$$

Note that  $S(x, z, t)$  is related to the depth-resolved optical field, integrated over a resolution element (coherence volume). Therefore, the depth-resolved intensity,  $I(x, z, t)$ , is equivalent to the magnitude square of the field, i.e.,  $I(x, z, t) = |S(x, z, t)|^2$ . OCTA algorithms may operate on either  $S(x, z, t)$ ,  $\varnothing(x, z, t)$ , or  $I(x, z, t)$  as the “signal”, and accordingly, can be categorized into complex field-based techniques, phase-based techniques, and intensity-based techniques. In its simplest form, OCTA employs differences between OCT signals at the same spatial position over a series of time points to highlight scatterer motion. As discussed in Section 2.2, RBCs are the main blood scattering component. Due to the dynamic motion of RBCs, the overall field, phase, and intensity fluctuate. For the field, these variations are determined, in a statistical sense, by the first-order field autocorrelation function,  $r(\tau)$ , in which  $r(\tau) = R(\tau)/R(0)$  and  $R(\tau) = E[S(x, z, t + \tau)S^*(x, z, t)]$ , where  $E[\ ]$  represents expectation and  $\tau$  is the time lag. Under some circumstances, all other signal variations, including those of the intensity and phase, derive their statistical properties from the field autocorrelation [43].

OCT complex signal dynamics are illustrated in Figure 3. The complex signal is treated as a complex summation of backscattered fields from individual scatterers within the coherence volume. The coherence volume is defined by the beam waist in the transverse direction and the coherence length in the axial direction. Changes in the fields from individual scatterers over time leads to changes in the total signal over time (Figure 3A,B). In many practical situations, scatterers may be further classified as “dynamic” and “static” depending on whether they move or not, with both scatterer types contributing to the signal in the same coherence volume (Figure 3C,D).

The nature of scatterer dynamics plays a major role in determining the OCT signal changes (Figure 4). Generally, scatterer motion is accompanied by both a Doppler shift and

decorrelation [44]. When the scatterer has an axial velocity component, moving towards or away from the incident beam, the complex field rotates, tracing a helix over time (Figure 4A–C). This effect can be described as a linear phase shift over time due to the Doppler effect, or a “Doppler phase shift”. When the scatterer is undergoing a dynamic conformational change, rotation, or translational motion through the coherence volume, both the OCT signal intensity and phase change randomly (Figure 4D–F). This random change of the complex field is known as decorrelation. Doppler shifts are associated with a change in the phase of the complex field autocorrelation, while decorrelation is associated with a decrease in the magnitude of the complex field autocorrelation,  $|R(\tau)|$ , with increasing  $\tau$ .

Both Doppler shifts and decorrelation are present to varying degrees in all vasculature. Note that a Doppler shift due to translational axial motion through the coherence volume implies decorrelation. On the other hand, decorrelation occurs even for transverse motion or rotation, and does not necessarily imply a Doppler shift. To illustrate this, Figure 5 shows a comparison between Doppler OCT and OCTA of mouse brain microvasculature. Doppler OCT detects phase changes caused by translational axial motion [45]. The requirement for axial phase shifts renders Doppler OCT only sensitive to motion parallel to the incident beam. Doppler shifts predominate in larger microvessels which are ascending or descending (Figure 5A); hence when used for angiography, the Doppler effect provides only a partial microvascular map. By comparison, decorrelation involves random deviations of the complex field and predominates in vessels with transverse flow. Thus, OCTA, which senses decorrelation via intensity and/or phase, more comprehensively shows the vasculature (Figure 5B,C).

Finally, it should be noted that the presence of static scattering can significantly alter time courses. The OCT field, intensity, and phase time courses due to dynamic scattering in the presence of a static scatterer are shown in Figure 6. As suggested by Figure 3D, the presence of static scattering confines the field fluctuations to a portion of the complex plane (Figure 6A). As will be discussed in Section 7.1, the possible presence of static scatterer(s) must be considered in order to recover quantitative information about the Doppler phase shift or the decorrelation rate in OCTA.

## 4. OCTA Algorithms

The previous section showed that OCTA signals depend on the type of dynamics (Doppler shift or decorrelation), the observed parameter (intensity, phase, or field), and the possible presence of static scattering in the coherence volume. With this discussion in mind, we now present the main classes of angiography algorithms.

### 4.1. Intensity- or Amplitude-Based OCTA Algorithms

Intensity-based OCTA algorithms use  $I(x, z, t) = |S(x, z, t)|^2$ , while amplitude-based OCTA algorithms use  $|S(x, z, t)|$  in Equation (1).

The first class of intensity-based OCTA algorithms is the speckle variance method. Speckle [46] can be described as the random interference of scattering fields (indexed by  $m$ ) that cannot be resolved within a coherence volume:

$$S(z) = \sum_m S_m(z), \quad (2)$$

$S_m$  represents the fields within a coherence volume, each weighted according to the point spread function at the scatterer location (Figure 3). The intensity (as well as the phase and field) changes over time as the configuration of scatterers changes, causing decorrelation (Figure 4D–F). Decorrelation can occur as RBCs pass through a coherence volume, but may also occur due to rotational motion or diffusion. In 2005, Barton and Stromski showed the feasibility of flow speed measurement without phase information by evaluating speckle pattern changes [47]. In 2008, Mariampillai et al. [48] used interframe speckle variance to visualize microcirculation. In [48], speckle variance was defined as:

$$SV(x, z) = \frac{1}{N} \sum_{t=0}^{(N-1)T} [I(x, z, t) - \overline{I(x, z)}]^2, \quad (3)$$

where  $t = 0, T, 2T, \dots, (N-1)T$  represents the OCT acquisition time;  $T$  is the time interval;  $N$  is the total number of acquisitions at the same position;  $x$  and  $z$  denote lateral and depth indices, respectively; and  $\overline{I(x, z)} = \overline{|S(x, z)|^2}$  is the time-averaged intensity at position  $(x, z)$ . This is a temporally averaged, variance-based algorithm without normalization. By ignoring the phase in Equation (1), the method is not sensitive to pure Doppler shifts. Consequently, speckle variance is not susceptible to phase noise. However, the speckle variance method may be compromised due to interframe bulk tissue motion. While in-plane ( $xz$ ) motion can be compensated in principle, out-of-plane motion is more challenging to correct. To minimize motion effects, later in 2010, Mariampillai et al. [49] optimized the frame number and frame rate for a given level of bulk tissue motion, through maximizing the speckle variance signal-to-noise ratio (SNR) between a “dynamic” and “static” pixel. Speckle variance SNR is calculated as:

$$SV_{SNR}(N, \overline{I(x, z)}) = \frac{SV_{dynamic}(N, \overline{I(x, z)}) - SV_{static}(N, \overline{I(x, z)})}{\sqrt{\sigma_{dynamic}^2(N, \overline{I(x, z)}) + \sigma_{static}^2(N, \overline{I(x, z)})}}, \quad (4)$$

where  $\overline{I(x, z)}$  is the time-averaged intensity for both “dynamic” and “static” pixels,  $SV_{dynamic}$  and  $SV_{static}$  are speckle variances calculated from Equation (3), and  $\sigma_{dynamic}^2$  and  $\sigma_{static}^2$  are variances of  $SV_{dynamic}$  and  $SV_{static}$ , respectively. By optimizing the frame number under conditions of low tissue bulk motion, capillaries can be reliably detected [49].

As the dynamic tissue signal has a lower temporal correlation, at a given time lag, than static tissue, correlation has been investigated as a parameter for angiography. In 2011, Enfield et al. [50] demonstrated in vivo human volar forearm imaging of the capillary density and vessel diameter with correlation mapping optical coherence tomography (cmOCT). The correlation between OCT frames acquired at time  $t$  and  $t + T$  at the same position is:

$$\text{cmOCT}(x, z) = \sum_{p=0}^V \sum_{q=0}^W \frac{[I(x+p, z+q, t) - \overline{I(t)}][I(x+p, z+q, t+T) - \overline{I(t+T)}]}{\sqrt{[I(x+p, z+q, t) - \overline{I(t)}]^2 + [I(x+p, z+q, t+T) - \overline{I(t+T)}]^2}}, \quad (5)$$

where  $V$  and  $W$  define the extent of the spatial region for correlation calculation, and  $\overline{I(t)}$  denotes the spatially averaged intensity over this region. This is a spatially averaged, correlation-based algorithm with normalization. After this calculation, a 2D correlation map can be formed by applying a threshold to binarize the image into static and dynamic regions. In 2012, Jia et al. [51] proposed split-spectrum amplitude-decorrelation angiography (SSADA) to image the human macula and optic nerve head. Ensuring a nearly isotropic coherence volume size by splitting the spectrum to degrade the axial resolution to equal the transverse resolution, they then applied a method similar to cmOCT.

#### 4.2. Phase-Based OCTA Algorithms

Phase-based OCTA algorithms rely on  $\varnothing(x, z, t)$  in Equation (1) to distinguish dynamic and static tissue. Doppler OCT, a category of phase-based OCTA, uses a deterministic Doppler phase shift for in vivo blood flow measurements [52,53]. While Doppler OCT can quantify flow, visualization applications are limited due to its angle dependence (Figure 5A). For instance, retinal blood vessels are nearly perpendicular to the optic axis, particularly outside of the optic nerve head, yielding insufficient phase shifts for Doppler measurements [42]. Power Doppler [54,55] and phase variance imaging [56] represent alternative approaches that are sensitive to decorrelation, or random non-deterministic Doppler shifts. In 2007, Fingler et al. [57] proposed phase variance for motion contrast. In [58], the phase variance at position  $(x, z)$  is defined as:

$$\text{PV}(x, z) = \frac{1}{N-1} \sum_{t=0}^{(N-2)T} [\Delta \varnothing(x, z, t) - \overline{\Delta \varnothing(x, z)}]^2. \quad (6)$$

The phase difference at a given location is given by:

$$\Delta \varnothing(x, z, t) = \varnothing(x, z, t+T) - \varnothing(x, z, t), \quad (7)$$

where  $T$  is the time lag. Equation (6) is a temporally averaged, variance-based algorithm without normalization. Phase-based OCTA algorithms are advantageous over amplitude- and intensity-based algorithms if phase changes but intensity and amplitude do not. However, phase-based OCTA loses information about the OCT signal amplitude and intensity. Moreover, phase-based OCTA may not detect changes in the presence of a large static scattering component. Similar to amplitude- and intensity-based algorithms, phase-based OCTA is sensitive to decorrelation (Figure 4E,F). However, as phase is particularly sensitive to axial motion, additional bulk motion phase correction is typically required. In [57], before phase variance analysis, Fingler et al. removed the bulk motion phase change:



$$\Delta \varnothing^{\text{corr}}(x, z, t) = \Delta \varnothing(x, z, t) - \Delta \varnothing^{\text{bulk}}(x, t), \quad (8)$$

where  $\varnothing^{\text{corr}}(x, z, t)$  denotes the corrected phase change, and  $\varnothing^{\text{bulk}}(x, t)$  represents the phase change due to bulk motion, estimated as:

$$\Delta \varnothing^{\text{bulk}}(x, t) = \frac{\sum_{z=a}^b [ |S(x, z, t) | \Delta \varnothing(x, z, t) ]}{\sum_{z=a}^b [ |S(x, z, t) | ]} \quad (9)$$

The phase change due to bulk motion is thus calculated by a weighted mean from  $z = a$  to  $z = b$  in one A-scan. Note that bulk phase change estimation based on cross-correlation is also possible [16,59].

### 4.3. Complex Signal-Based OCTA Algorithms

Complex signal-based OCTA algorithms use  $S(x, z, t)$ , the complex field, which includes both the intensity/amplitude and phase in Equation (1). As both intensity and phase fluctuations (Figure 4B,C,E,F) arise from field fluctuations (Figure 4A,D), we assert that the complex field is more fundamental than either the intensity or phase. In particular, the static component can be readily handled in the complex domain (Figure 6). Also, unlike intensity-based OCTA, complex signal-based OCTA is sensitive to slow flow with only phase changes [60]. In 2007, Wang et al. [61] demonstrated complex signal-based OCT angiography, also called optical microangiography (OMAG), for the first time, while interframe complex OCTA was introduced later [16,62]. The most basic complex OCTA algorithm is based on subtraction,

$$\Delta S(x, z, t) = | S(x, z, t+T) - S(x, z, t) |, \quad (10)$$

where  $S(x, z, t+T)$  and  $S(x, z, t)$  are complex OCT signals acquired at the same position separated by a time lag  $T$ . This is a difference-based algorithm without normalization. Spatial or temporal averaging may be applied as needed. This expression may also be generalized as a variance calculation (or high-pass filter [16]) that eliminates static scattering:

$$\Delta S(x, z) = \frac{1}{N} \sum_{t=0}^{(N-1)T} | S(x, z, t) - \overline{S(x, z)} |^2. \quad (11)$$

This is a temporally averaged, variance-based algorithm without normalization. As static and dynamic scatterer fields add in the complex domain (Figure 6), the above expression correctly eliminates static scattering to quantify the dynamic scattering signal.

Using a complex signal-based algorithm, several applications of OCTA are demonstrated here. Figure 7A,B shows OCTA graphing of the mouse brain vasculature in vivo. Longitudinal monitoring of recovery in the mouse brain, one week after an experimental ischemic stroke, is shown in Figure 7C. Note the presence of vascular remodeling (yellow arrows). Figure 8 shows OCTA of a rodent eye in vivo. Figure 9 presents OCTA of pig ear skin, including a cross-sectional intensity image (Figure 9A), cross-sectional angiogram image (Figure 9B), color-coded angiogram of superficial and deep vasculature (Figure 9C), and angiograms centered at different depths (Figure 9D–I). All figures employ a complex interframe subtraction algorithm for angiography.

In 2014, Nam et al. [63] proposed a complex differential variance (CDV) algorithm. This differential variance algorithm, applied to the OCT signal at a position  $(x, z)$ , is:

$$\text{CDV}(x, z) = \sqrt{1 - \frac{\sum_{t=0}^{(N-2)T} \left| \sum_{k=-L}^L w_k S(x, z-k, t) S^*(x, z-k, t+T) \right|}{\sum_{t=0}^{(N-2)T} \sum_{k=-L}^L w_k \frac{1}{2} [I(x, z-k, t) + I(x, z-k, t+T)]}}, \quad (12)$$

where  $w_k$  is a depth-dependent window function of length  $2L + 1$ . Though it is referred to as a “variance” method, this algorithm is actually a spatially and temporally averaged, correlation-based method with normalization (see the discussion of variance versus correlation in Section 4.4). The correlation is estimated by averaging on a complex basis axially (in  $z$ ) and a magnitude basis over time. Also note that the correlation definition is the complex conjugate of that used elsewhere in this paper, though due to the absolute value operation, this minor discrepancy has no effect on the final CDV.

#### 4.4. Classification of Present OCTA Algorithms

Historically, all of the OCTA algorithms described above were novel at the time they were introduced. However, with the benefit of hindsight, we propose basic categories to classify OCTA algorithms in Table 2.

The primary distinction between algorithms, discussed in Section 4.1, Section 4.2, Section 4.3, is the OCT signal(s) employed. The second distinction, which is emphasized in the literature, is between variance/difference-based methods and correlation-based methods. However, here we argue that in some cases, this distinction is meaningless. Difference-based methods are actually estimating the following:

$$D(T) = E[ | X_{t+T} - X_t |^2 ], \quad (13)$$

where  $D(T)$  denotes the difference at a time lag of  $T$  and  $X_t$  can be the OCT field, intensity, or amplitude at time  $t$ . Variance-based methods are estimating the following:

$$V = E[ | X_t - E(X_t) |^2 ]. \quad (14)$$

On the other hand, the un-normalized autocorrelation is defined as:

$$R(T) = E[X_t * X_{t+T}]. \quad (15)$$

Further expanding Equation (13), the difference can be written in terms of the autocorrelation:

$$D(T) = E[|X_{t+T}|^2] + E[|X_t|^2] - 2\text{Re}\{E[X_t * X_{t+T}]\} = 2R(0) - 2\text{Re}\{R(T)\}. \quad (16)$$

Therefore, difference and correlation methods are very closely connected if  $R(T)$  is real. If  $R(T)$  is complex, as would be the case if  $X_t$  represented the field and Doppler shifting were present, the difference  $D(T)$  depends only on the real part of  $R(T)$ . From Equations (14) and (15), it can be readily shown that  $R(0) = V$  if  $E[X_t] = 0$ . Thus, every difference method corresponds to an equivalent correlation method via Equation (16).

The third distinction between algorithms is the way that the expectation,  $E[\ ]$ , is realized in practice. One method of realizing the expectation is by averaging over time. Another way is by averaging over space, at different tissue locations. Yet another way is spectral or optical wavelength averaging, employed in split-spectrum methods [51]. Under the assumption of ergodicity [64], all averaging methods are asymptotically equivalent, and in practice, all can be used to some degree. However, note that averaging over one dimension will automatically degrade the resolution in that dimension.

Fourth, OCTA methods can be distinguished by the use of normalization. The normalized correlation is divided by the signal power,  $R(0)$ :

$$r(T) = R(T)/E[|X_t|^2] = R(T)/R(0) \quad (17)$$

For the complex signal, the power  $R(0)$  is related to the total scattering within a coherence volume. In a vessel, this depends on the backscattering cross-section of RBCs (which depends on orientation according to Section 2.2), and the RBC density (hematocrit). As discussed further in Section 7.1,  $R(\tau)$  is a monotonically decreasing function under certain conditions, with the decorrelation rate, or rate of autocorrelation decay, being proportional to speed. As difference methods depend on  $R(0)$  and  $R(T)$ , there are two regimes to consider in understanding Equation (16). The first is when  $T$  is much longer than the intrinsic decorrelation time. In this case,  $R(T) \ll R(0)$ , and  $D(T)$  is proportional to the signal power  $R(0)$ , typically related to backscattering (RBC density and orientation). If  $T$  is on the order of the intrinsic decorrelation time, the difference  $D(T)$  depends on both the signal power  $R(0)$  and the decorrelation rate. In this case, the interpretation of the difference  $D(T)$  becomes more ambiguous, and it can be affected by the signal power or decorrelation rate, which can be impacted by the RBC density, orientation, and speed. With the normalization in Equation (17),  $r(T)$  is more directly related to the rate of decorrelation, and hence, the

RBC speed. However, to rigorously account for the possible presence of static scattering, measurements at several time lags [18] are required.

## 5. OCTA Scanning Protocols

The efficiency and sensitivity of OCTA measurements are determined by the OCTA scanning protocol. At a fundamental level, scanning protocols can be categorized based on whether the analysis is performed on consecutive A-scans, frames, or volumes. Figure 10 shows the so-called MB-scan, BM-scan and intervolumetric scanning methods. In Figure 10, the cube represents the imaged object, and  $t_1$ ,  $t_2$ ,  $t_3$  are the first, second, and third OCT scanning time scales, respectively, with  $t_3 > t_2 > t_1$ . Each protocol can be characterized by the time duration for which a single location is observed.

To our knowledge, Fingler et al. [57] were the first to rigorously compare different OCTA scanning patterns. They compared the MB-scan (Figure 10A) and the BM-scan (Figure 10B), using a phase contrast algorithm. An M-scan is a repeated zero-dimensional scan at a single position, while a B-scan is a one-dimensional scan along a single axis. An MB-scan comprises multiple A-scans taken at one lateral position before switching to the next position (Figure 10A), while a BM-scan comprises repetitive B-scans taken along the same cross-section (Figure 10B). According to [57], the advantages and disadvantages of the two scanning methods are described here.

The MB-scan is an extension of Doppler OCT protocols. By increasing  $N$ , the number of A-scans per M-scan, the dynamic range for the measurement increases. However, the MB-scan is not time-efficient, because the total observation time for a single location is  $\sim t_1$ . Unless the dwell time is very long,  $f(t_1) \sim 1$ ; thus it is challenging to observe decorrelation. However, due to the rapid repeated sampling of the same position, the MB-scan can sample fast Doppler velocities [57] without aliasing.

On the contrary, a BM-scan compares consecutive frames, thereby more efficiently utilizing the total acquisition time. With a BM-scan, the total observation time for a single location is  $\sim t_2$ . In [57], the BM-scan was able to acquire data 200 times faster than an MB-scan of the same size. Even when using fast systems, the BM-scan may suffer from aliasing of fast Doppler velocities; however, the decorrelation rate can be obtained if the interframe time is short enough, i.e.,  $f(t_1) > 0$ , and provided that  $t_2$  exceeds the intrinsic decorrelation time.

In a logical extension of the above two scanning methods, in 2016, Wei et al. [65] proposed a volumetric optical microangiography method (Figure 10C) which used intervolumetric OCT scans to extract dynamic changes. The total observation time for a single location is  $\sim t_3$ . However, in this volumetric protocol, all information about the decorrelation rate is lost as speckles decorrelate between volumes (i.e.,  $f(t_2) \sim 0$ ) for all but the slowest flows. Nevertheless, the volumetric OCTA is likely to become more prevalent as imaging speeds continue to improve [66].

## 6. Empirical Validation of OCTA

A major question in quantitative OCTA is the degree to which the measured signals are affected by the RBC speed versus density or orientation. Several authors have attempted to answer this question empirically. In 2016, Choi et al. [67] investigated the relationship between OMAG (complex difference OCTA) signals and capillary flow. They proposed an analytic model that expressed OMAG signals as a function of time interval between successive B-scan frames, particle speed, and concentration (the last two determine flux). Based on this model, they performed simulations, as well as phantom experiments, using microfluidic channels filled with diluted Intralipid solution to model blood vessels. It was shown that OMAG signal increases with flow speed within a certain range that depends on the time interval between successive B-scan frames, as expected based on Equation (16). Furthermore, OMAG signal increased with particle concentration, but was not strictly linear. One limitation of this study is that the Intralipid solution and blood possess very different scattering properties [68,69]. Su et al. [70] used blood samples in microfluidic channels to demonstrate the relationship between SSADA decorrelation signal and the flow speed and channel width. They concluded that before saturation, the decorrelation rate was proportional to the blood flow speed when the channel width was fixed.

Even if flow velocities, channel widths, and particle/cell concentrations are realistic, controlled ex vivo experiments are limited in how well they can model the range of phenomena that are present in vivo. These include effects such as static scattering and multiple scattering involving extravascular tissue (Figure 2B), RBC orientation and transit deformation, vascular compliance, and cell-endothelium interactions. So, in vitro experiments may verify algorithms under model conditions, but the model might only partially capture the range of rheological and hemodynamic phenomena present in vivo.

One proposed in vivo benchmark for OCTA is fluorescence angiography (FA), which is a gold standard method for perfusion imaging [7,42]. Comparative OCTA-FA studies [7,55] have suggested that the presence of moving blood cells is a prerequisite for detection by OCTA. The threshold red blood cell density and speed required for OCTA detection are usually determined by the algorithm sensitivity. While FA shows plasma perfusion, limited depth resolution and lack of three-dimensional data and quantitative flow information make FA a less-than-ideal technique for OCTA validation.

The gold standard for single vessel hemodynamic imaging in deep tissue is multiphoton microscopy (MPM) [71,72]. In the simplest implementation, a fluorescent label is injected into the bloodstream and volumetric two-photon microscopy (TPM) is performed to acquire an angiogram. Vakoc et al. [15] showed that OCTA and two-photon microscopy angiogram morphologies correlate well for vessels larger than capillaries, and that OCTA is not confounded by dye leakage, which can impair TPM. Aside from morphology, TPM line scans enable red blood cell imaging in individual capillaries [22], measuring in vivo speed, flux, and linear density quantitatively. In 2012, Srinivasan et al. [18] performed OCTA and TPM line scans sequentially in the same vessels in vivo, showing that OCTA decorrelation rate increases with RBC speed measured by TPM. Later in 2014, Wang et al. [73] validated OMAG (complex difference OCTA) with TPM, finding no significant difference between

the respective vessel densities derived from OMAG and TPM, up to the penetration depth of TPM.

When comparing OCTA and TPM, it is important to recognize that their contrast mechanisms are complementary. As OCTA measures RBC scattering and TPM measures plasma tracer fluorescence, measurements of vessel diameter must disagree in small vessels due to the plasma only, cell-free layer [2]. Moreover, typically, OCTA has a worse volumetric resolution than TPM, and asynchrony in measurements [18] can additionally confound comparisons between modalities unless physiology is carefully maintained. Thus, rigorous verification of OCTA with simultaneous TPM is a promising topic for further investigation.

The most appealing and direct validation approach is to use another OCT modality or algorithm to cross-validate OCTA. In 2012, Ren et al. [74] noticed that the passage of a red blood cell through the OCT coherence volume led to phase and intensity transients. Based on this insight, they developed a particle counting method for measuring the flux, speed, and linear density in a capillary. Using particle counting, they developed and validated a phase intensity mapping (PIM) algorithm for measuring quantitative cerebral blood flow (CBF) [75]. It remains unclear whether individual red blood cell passage can be measured at all locations in an image, or whether these results are merely anecdotal. Moreover, the intensity pattern created by decorrelation can create random transients that could be easily mistaken for RBC passage (e.g., Figures 4E and 6B). Still, particle counting remains an attractive approach for validating OCTA in stable preparations.

## 7. OCTA Measurements of Hemodynamics

Based on dynamic changes in intensity, phase, or complex signal, OCTA algorithms can distinguish dynamic tissue from static tissue. Thus, while OCTA can answer the question “where is there flow?”, it cannot yet reliably answer the question “how much flow is there?”. In recent years, several attempts have been made to further quantify OCTA signals. Many of these efforts are based on estimating the autocorrelation function. While the autocorrelation function can be estimated, to date, there is no rigorous theory or model for recovering RBC flow or speed from OCTA signals. Here, we summarize some promising work towards these goals.

### 7.1. Flow Quantification

In 2010, Wang et al. [19] made an early effort at providing an autocorrelation model to measure transverse particle flow speed. Though they focused on intensity transients, here we generalize their initial work. The basic principle of their model is that when particles pass through the imaging beam, they create OCT signal transients that may provide information about the speed of the underlying particles. However, with a large coherence volume, the individual transients may overlap in time. The complex signal at position  $(x, z)$  is expressed as a superposition of particle contributions:

$$S(x, z, t) = \sum_{k=1}^{G(x, z)} M_k(x, z) \text{REC}(x, z, t - t_k), \quad (18)$$

$$\text{REC}(x, z, t) = \begin{cases} 1, & 0 \leq t \leq \tau_0(x, z) \\ 0, & \text{otherwise} \end{cases}, \quad (19)$$

where  $k$  is index of the  $k$ th particle,  $G(x, z)$  is the total number of particles passing through the imaging beam within the signal acquisition period,  $M_k(x, z)$  is the complex amplitude of the  $k$ th particle transient,  $t_k$  denotes the time when a particle begins to pass through the beam, and  $\tau_0(x, z)$  is the position-dependent transit time of the particle.

After expressing the complex OCT signal in terms of particle contributions, the normalized autocorrelation function of  $S(x, z, t)$  is given by:

$$\frac{R(x, z, \tau)}{R(x, z, 0)} = \begin{cases} 1 - \frac{\tau}{\tau_0(x, z)}, & \tau \leq \tau_0(x, z) \\ 0, & \tau \geq \tau_0(x, z) \end{cases}, \quad (20)$$

where  $R(x, z, \tau)$  is the autocorrelation function of  $S(x, z, t)$  with time lag  $\tau$ . Note that this is equivalent to the normalized autocorrelation of  $\text{REC}(t)$ . The slope of the normalized autocorrelation function in Equation (20) is proportional to the transverse speed ( $\sim 1/\tau_0$ ). Note that Equation (20) can be further generalized to accommodate other transient shapes.

In 2012, Srinivasan et al. [18] proposed an alternative model to relate the autocorrelation to speed. For small particles undergoing isotropic motion through a coherence volume, they proposed that the autocorrelation decay is determined by axial and transverse point spread functions, while for large particles, the spatial characteristics of the particles themselves dominate the autocorrelation as described above. In [76], for small particles, the autocorrelation function at time lag  $\tau$  in cylindrical coordinates ( $\rho, \phi, z$ ) is:

$$R_d(\tau) = \frac{2 |K|^2}{\pi^2 w_\rho^4} \sqrt{\frac{\pi}{\frac{v_\rho^2}{w_\rho^2} + \frac{v_z^2}{w_z^2}}} P_A \exp \left[ -\frac{(v_\rho \tau)^2}{w_\rho^2} - \frac{(v_z \tau)^2}{w_z^2} \right] \exp \left[ i \left( \frac{4\pi n}{\lambda_0} \right) v_z \tau \right], \quad (21)$$

where  $w_\rho$  is the transverse beam profile,  $w_z$  is the axial resolution,  $K$  is an arbitrary complex constant [77],  $P_A$  is the power in the random process which describes the field,  $v$  is the particle's speed,  $n$  denotes the refractive index, and  $\lambda_0$  is the central wavelength. The power spectral density,  $P_d$ , derived from the temporal autocorrelation function, is expressed as:

$$P_d(f) = \frac{2 |K|^2}{\pi w_q^4 \left( \frac{v_q^2}{w_q^2} + \frac{v_z^2}{w_z^2} \right)} P_A \exp \left[ - \frac{\pi^2 \left( f - \frac{2nv_z}{\lambda_0} \right)^2}{\left( \frac{v_q^2}{w_q^2} + \frac{v_z^2}{w_z^2} \right)} \right]. \quad (22)$$

In the presence of static scattering (Figure 6), the autocorrelation takes the form:

$$R(\tau) = R_d(\tau) + R_s(\tau), \quad (23)$$

where  $R_s(\tau)$  is the autocorrelation of the static component, with a much longer decorrelation time than the autocorrelation of the dynamic component,  $R_d(\tau)$ . In practice,  $R_s(\tau)$  is usually constant over time scales of interest. Aside from the Doppler shift, the un-normalized autocorrelation  $R_d(\tau)$  provides two essential observables: the decorrelation rate, which is sensitive to speed, and power ( $P_A$ ), which is sensitive to the RBC density. Recent work has proposed to quantify OCTA using difference algorithms measured at several time delays [20,78], providing the ability to measure blood flow speed. Since difference and correlation algorithms are related by Equation (16), these algorithms essentially estimate the un-normalized autocorrelation. As highlighted in Equation (23), static scattering, if present, must also be taken into account in parametric estimations based on the autocorrelation.

Finally, a major limitation of existing models is that they do not account for multiple scattering. In particular, multiple dynamic scattering events (Figure 2C, green) increase the decorrelation rate relative to the single scattering models described above, as each dynamic scattering event causes momentum transfer [79]. In such cases, the decorrelation rate depends on the number of scattering events, which in turn is impacted by the RBC density. Thus, with multiple intravascular scattering events, decorrelation rate is not a “pure” metric of speed. Therefore, decorrelation rate is not a good metric of speed within macrovessels where multiple scattering dominates, but may perform better in capillaries where hematocrits are lower and singly backscattered light prevails (Figure 2B).

## 7.2. Hematocrit Quantification

Since OCTA signal depends on the RBC density, can OCTA be used to quantify hematocrit? The differences in rheology, geometry, and light scattering in capillaries versus macrovessels suggest different approaches for each. In macrovessels, backscattering or attenuation (signal slope) are possible observables which may help to determine hematocrit. However, due to the high scattering coefficient and anisotropy of RBCs, multiple scattering events are very likely, except at superficial path lengths (Figure 2C,D). In particular, at physiological hematocrits, dependent scattering and shadowing effects lead to a highly nonlinear relationship between the RBC concentration and scattering coefficient [80,81]. This nonlinear relationship hampers efforts at quantifying hematocrit based on light scattering and the signal slope alone. Additionally, the oxygen saturation dependence of hemoglobin refractive index and RBC scattering further complicate efforts to measure hematocrit based



on attenuation [26]. The orientation-dependence of light scattering from RBCs (Figure 2C) makes quantifying hematocrit from backscattering alone challenging. Thus, quantification is challenging in macrovessels.

The single file flow and relatively lower hematocrit in capillaries makes multiple scattering within these vessels less problematic. However, RBCs may re-orient themselves and possibly deform as they squeeze through the smallest diameter capillaries, thereby changing their backscattering cross-sections. Moreover, measuring backscattering directly would need absolute calibration, which can be difficult in vivo. However, backscattering may still measure relative changes in the red blood cell content in capillaries [82] and, possibly, at the surfaces of macrovessels over time. Thus, while quantification of hematocrit changes is possible in capillaries, absolute measurements of hematocrit with conventional OCTA are currently challenging.

## 8. Can OCTA Be Made a Quantitative Tool?

OCTA systems can observe dynamic signal power (variance) and decorrelation rate [19,83], based on the dynamics of light scattering. As algorithms, imaging system performance, and motion tracking/compensation continue to improve, OCTA observables, particularly decorrelation rate, can be precisely and accurately measured. These observables may generate useful diagnostic information, even if their underlying hemodynamic correlates remain unclear. However, if OCTA observables can be directly linked to hemodynamic parameters such as blood flow, volume, hematocrit, and speed, OCTA diagnostics could aid understanding of pathogenesis. This effort requires an appropriate model to describe OCTA signals. The model may be empirical (Section 6), but ideally, should have a theoretical foundation (Section 7.1). Current theoretical models are very simple, and only account for single scattering [18,19,83,84]. Improvements in OCTA theory to include multiple scattering [85] and orientation effects [37] are needed. Empirical models have been developed for flow phantoms [67], but they may be limited to in vitro conditions, and their applicability in vivo remains uncertain. Better in vivo validation experiments, perhaps in well-controlled and stable animal preparations, are needed. Last, due to differences in light scattering and hemodynamics (Figures 1 and 2), models for capillaries and macrovessels must be developed independently.

In spite of these proposed efforts, the inherent complexity of the rheology and light transport in microvasculature may prevent reliable quantification of OCTA. Therefore, we propose that alternative optical properties (aside from light scattering) may enable more quantitative OCTA. For instance, visible light OCTA [86] enables direct absorption-based measurements of hemoglobin concentration, which is expected to correlate well with hematocrit (RBC volume fraction) under most conditions [87]. Yet another way to circumvent the pitfalls of RBC scattering is to introduce an exogenous contrast agent with more desirable scattering properties into the bloodstream [88]. If a more isotropically scattering contrast agent such as Intralipid® [89,90] is used, angiograms derived from the contrast agent signal alone do not suffer from multiple scattering tails [89,90]. Microbubbles [91,92] are promising for enhancing intravascular scattering signals, and may present more well-defined decorrelation characteristics than blood. Moreover, if the contrast agent behaves like plasma and the signal

can be calibrated and related to concentration [89,90], plasma flow, transit time, and volume can all be measured.

## 9. Conclusions

Despite recent strides in OCTA imaging speed, field-of-view, and measurement of OCTA observables, OCTA remains a qualitative tool at present. The obstacles to quantification include the irregular shape of RBCs, the consequent orientation-dependence of RBC backscattering, and the high anisotropy of the RBC scattering phase function, which leads to multiple scattering in large vessels. Quantification of OCTA signals can be achieved only through a rigorous understanding of the relationship between hemodynamics, rheology, and light scattering of RBCs. Improvements in theoretical models, validated in microvasculature in vivo against gold standard techniques and possibly in simulation, may help to improve this understanding. Finally, alternative measurements, based on absorption or exogenous contrast agents, may help to alleviate some of the confounds associated with RBC scattering and enhance the quantitative information provided by OCTA. More quantitative interpretation of OCTA would aid the application of this promising technique to study pathophysiology, and also potentially enhance the clinical impact of OCTA, making this endeavor well worth the effort.

## Acknowledgments

We acknowledge support from the National Institutes of Health (EB023591, AG010129, and NS094681) and the Glaucoma Research Foundation Catalyst for a Cure.

## References

1. Fedosov DA, Noguchi H, Gompper G. Multiscale modeling of blood flow: From single cells to blood rheology. *Biomech Model Mechanobiol.* 2014; 13:239–258. [PubMed: 23670555]
2. Secomb TW. Blood flow in the microcirculation. *Annu Rev Fluid Mech.* 2017; 49:443–461.
3. Fung Y-C. *Biomechanics: Motion, Flow, Stress, and Growth* Springer Science & Business Media; New York, NY, USA: 2013
4. Choi W, Mohler KJ, Potsaid B, Lu CD, Liu JJ, Jayaraman V, Cable AE, Duker JS, Huber R, Fujimoto JG. Choriocapillaris and choroidal microvasculature imaging with ultrahigh speed oct angiography. *PLoS ONE.* 2013; 8:e81499. [PubMed: 24349078]
5. Jia Y, Bailey ST, Wilson DJ, Tan O, Klein ML, Flaxel CJ, Potsaid B, Liu JJ, Lu CD, Kraus MF, et al. Quantitative optical coherence tomography angiography of choroidal neovascularization in age-related macular degeneration. *Ophthalmology.* 2014; 121:1435–1444. [PubMed: 24679442]
6. Jia Y, Bailey ST, Hwang TS, McClintic SM, Gao SS, Pennesi ME, Flaxel CJ, Lauer AK, Wilson DJ, Hornegger J, et al. Quantitative optical coherence tomography angiography of vascular abnormalities in the living human eye. *Proc Natl Acad Sci USA.* 2015; 112:2395–2402. [PubMed: 25646415]
7. Ishibazawa A, Nagaoka T, Takahashi A, Omae T, Tani T, Sogawa K, Yokota H, Yoshida A. Optical coherence tomography angiography in diabetic retinopathy: A prospective pilot study. *Am J Ophthalmol.* 2015; 160:35–44. [PubMed: 25896459]
8. Jia Y, Wei E, Wang X, Zhang X, Morrison JC, Parikh M, Lombardi LH, Gattley DM, Armour RL, Edmunds B, et al. Optical coherence tomography angiography of optic disc perfusion in glaucoma. *Ophthalmology.* 2014; 121:1322–1332. [PubMed: 24629312]
9. Spaide RF. Optical coherence tomography angiography signs of vascular abnormalization with antiangiogenic therapy for choroidal neovascularization. *Am J Ophthalmol.* 2015; 160:6–16. [PubMed: 25887628]

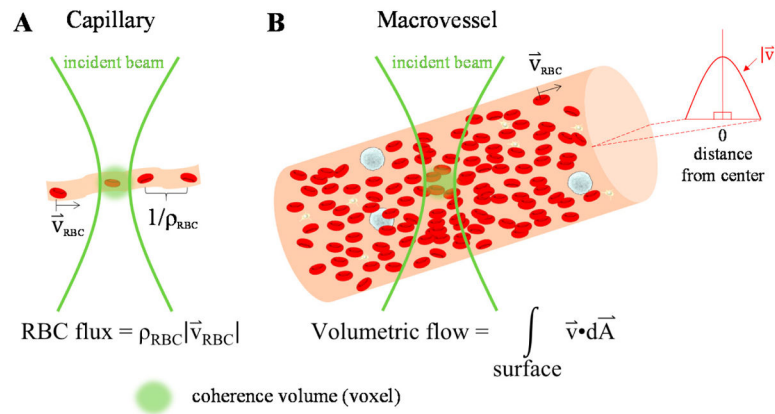
10. Kim DY, Fingler J, Zawadzki RJ, Park SS, Morse LS, Schwartz DM, Fraser SE, Werner JS. Optical imaging of the chorioretinal vasculature in the living human eye. *Proc Natl Acad Sci USA*. 2013; 110:14354–14359. [PubMed: 23918361]
11. Talisa E, Bonini Filho MA, Chin AT, Adhi M, Ferrara D, Bauman CR, Witkin AJ, Reichel E, Duker JS, Waheed NK. Spectral-domain optical coherence tomography angiography of choroidal neovascularization. *Ophthalmology*. 2015; 122:1228–1238. [PubMed: 25795476]
12. Tsai TH, Ahsen OO, Lee HC, Liang K, Figueiredo M, Tao YK, Giacomelli MG, Potsaid BM, Jayaraman V, Huang Q, et al. Endoscopic optical coherence angiography enables 3-dimensional visualization of subsurface microvasculature. *Gastroenterology*. 2014; 147:1219–1221. [PubMed: 25172015]
13. Lee HC, Ahsen OO, Liang K, Wang Z, Cleveland C, Booth L, Potsaid B, Jayaraman V, Cable AE, Mashimo H, et al. Circumferential optical coherence tomography angiography imaging of the swine esophagus using a micromotor balloon catheter. *Biomed Opt Express*. 2016; 7:2927–2942. [PubMed: 27570688]
14. Jung Y, Zhi Z, Wang RK. Three-dimensional optical imaging of microvascular networks within intact lymph node in vivo. *J Biomed Opt*. 2010; 15:050501–050503. [PubMed: 21054073]
15. Vakoc BJ, Lanning RM, Tyrrell JA, Padera TP, Bartlett LA, Stylianopoulos T, Munn LL, Tearney GJ, Fukumura D, Jain RK, et al. Three-dimensional microscopy of the tumor microenvironment in vivo using optical frequency domain imaging. *Nat Med*. 2009; 15:1219–1223. [PubMed: 19749772]
16. Srinivasan VJ, Jiang JY, Yaseen MA, Radhakrishnan H, Wu W, Barry S, Cable AE, Boas DA. Rapid volumetric angiography of cortical microvasculature with optical coherence tomography. *Opt Lett*. 2010; 35:43–45. [PubMed: 20664667]
17. Srinivasan VJ, Atochin DN, Radhakrishnan H, Jiang JY, Ruvinskaya S, Wu W, Barry S, Cable AE, Ayata C, Huang PL, et al. Optical coherence tomography for the quantitative study of cerebrovascular physiology. *J Cereb Blood Flow Metab*. 2011; 31:1339–1345. [PubMed: 21364599]
18. Srinivasan VJ, Radhakrishnan H, Lo EH, Mandeville ET, Jiang JY, Barry S, Cable AE. Oct methods for capillary velocimetry. *Biomed Opt Express*. 2012; 3:612–629. [PubMed: 22435106]
19. Wang Y, Wang R. Autocorrelation optical coherence tomography for mapping transverse particle-flow velocity. *Opt Lett*. 2010; 35:3538–3540. [PubMed: 21042342]
20. Choi W, Moulton EM, Waheed NK, Adhi M, Lee B, Lu CD, de Carlo TE, Jayaraman V, Rosenfeld PJ, Duker JS, et al. Ultrahigh-speed, swept-source optical coherence tomography angiography in nonexudative age-related macular degeneration with geographic atrophy. *Ophthalmology*. 2015; 122:2532–2544. [PubMed: 26481819]
21. Duncan DD, Kirkpatrick SJ. Can laser speckle flowmetry be made a quantitative tool? *J Opt Soc Am A Opt Image Sci Vis*. 2008; 25:2088–2094. [PubMed: 18677371]
22. Kleinfeld D, Mitra PP, Helmchen F, Denk W. Fluctuations and stimulus-induced changes in blood flow observed in individual capillaries in layers 2 through 4 of rat neocortex. *Proc Natl Acad Sci USA*. 1998; 95:15741–15746. [PubMed: 9861040]
23. Kamoun WS, Chae SS, Lacorre DA, Tyrrell JA, Mitre M, Gillissen MA, Fukumura D, Jain RK, Munn LL. Simultaneous measurement of rbc velocity, flux, hematocrit and shear rate in vascular networks. *Nat Method*. 2010; 7:655–660.
24. Santisakultarn TP, Cornelius NR, Nishimura N, Schafer AI, Silver RT, Doerschuk PC, Olbricht WL, Schaffer CB. In vivo two-photon excited fluorescence microscopy reveals cardiac- and respiration-dependent pulsatile blood flow in cortical blood vessels in mice. *Am J Physiol Heart Circ Phys*. 2012; 302:H1367–H1377.
25. Desjardins C, Duling BR. Microvessel hematocrit: Measurement and implications for capillary oxygen transport. *Am J Physiol Heart Circ Physiol*. 1987; 252:H494–H503.
26. Faber DJ, Aalders MC, Mik EG, Hooper BA, van Gemert MJ, van Leeuwen TG. Oxygen saturation-dependent absorption and scattering of blood. *Phys Rev Lett*. 2004; 93:028102. [PubMed: 15323954]

27. Meinke M, Müller G, Helfmann J, Friebel M. Optical properties of platelets and blood plasma and their influence on the optical behavior of whole blood in the visible to near infrared wavelength range. *J Biomed Opt.* 2007; 12:014024–014029. [PubMed: 17343499]
28. Sydoruk O, Zhernovaya O, Tuchin V, Douplik A. Refractive index of solutions of human hemoglobin from the near-infrared to the ultraviolet range: Kramers-kronig analysis. *J Biomed Opt.* 2012; 17:115002. [PubMed: 23123974]
29. Bosschaart N, Edelman GJ, Aalders MC, van Leeuwen TG, Faber DJ. A literature review and novel theoretical approach on the optical properties of whole blood. *Lasers Med Sci.* 2014; 29:453–479. [PubMed: 24122065]
30. Yaroslavsky AN, Yaroslavsky IV, Goldbach T, Schwarzmaier H-J. Optical properties of blood in the near-infrared spectral range. *Proceedings of Photonics West; San Jose, CA, USA.* 17 May 1996; 1996 314324
31. Simon JC. Dependent scattering and radiative transfer in dense inhomogeneous media. *Phys A Stat Mech Appl.* 1997; 241:77–81.
32. Roggan A, Friebel M, Dörschel K, Hahn A, Müller G. Optical properties of circulating human blood in the wavelength range 400–2500 nm. *J Biomed Opt.* 1999; 4:36–46. [PubMed: 23015168]
33. Friebel M, Roggan A, Müller G, Meinke M. Determination of optical properties of human blood in the spectral range 250 to 1100 nm using monte carlo simulations with hematocrit-dependent effective scattering phase functions. *J Biomed Opt.* 2006; 11:034021.
34. Meinke M, Müller G, Helfmann J, Friebel M. Empirical model functions to calculate hematocrit-dependent optical properties of human blood. *Appl Opt.* 2007; 46:1742–1753. [PubMed: 17356617]
35. Henyey LG, Greenstein JL. Diffuse radiation in the galaxy. *Astrophys J.* 1941; 93:70–83.
36. Hammer M, Yaroslavsky AN, Schweitzer D. A scattering phase function for blood with physiological haematocrit. *Phys Med Biol.* 2001; 46:N65. [PubMed: 11277234]
37. Cimalla P, Walther J, Mittasch M, Koch E. Shear flow-induced optical inhomogeneity of blood assessed in vivo and in vitro by spectral domain optical coherence tomography in the 1.3  $\mu\text{m}$  wavelength range. *J Biomed Opt.* 2011; 16:116020. [PubMed: 22112125]
38. Friebel M, Helfmann J, Müller G, Meinke M. Influence of shear rate on the optical properties of human blood in the spectral range 250 to 1100 nm. *J Biomed Opt.* 2007; 12:054005–054008. [PubMed: 17994893]
39. Prati F, Regar E, Mintz GS, Arbustini E, Di Mario C, Jang IK, Akasaka T, Costa M, Guagliumi G, Grube E. Expert review document on methodology, terminology, and clinical applications of optical coherence tomography: Physical principles, methodology of image acquisition, and clinical application for assessment of coronary arteries and atherosclerosis. *Eur Heart J.* 2010; 31:401–415. [PubMed: 19892716]
40. Bigio IJ, Fantini S. *Quantitative Biomedical Optics: Theory, Methods, and Applications* Cambridge University Press; Cambridge, UK: 2016
41. Chen CL, Wang RK. Optical coherence tomography based angiography [invited]. *Biomed Opt Express.* 2017; 8:1056. [PubMed: 28271003]
42. De Carlo TE, Romano A, Waheed NK, Duker JS. A review of optical coherence tomography angiography (octa). *Int J Retina Vitreous.* 2015;1. [PubMed: 27847594]
43. Siegert A. *On the Fluctuations in Signals Returned by Many Independently Moving Scatterers* Massachusetts Institute of Technology; Cambridge, MA, USA: 1943
44. Srinivasan VJ, Chan AC, Lam EY. *Doppler OCT and OCT Angiography for In Vivo Imaging of Vascular Physiology* INTECH Open Access Publisher; Rijeka, Croatia: 2012
45. Leitgeb RA, Werkmeister RM, Blatter C, Schmetterer L. Doppler optical coherence tomography. *Prog Retinal Eye Res.* 2014; 41:26–43.
46. Schmitt JM, Xiang S, Yung KM. Speckle in optical coherence tomography. *J Biomed Opt.* 1999; 4:95–105. [PubMed: 23015175]
47. Barton JK, Stromski S. Flow measurement without phase information in optical coherence tomography images. *Opt Express.* 2005; 13:5234–5239. [PubMed: 19498514]

48. Mariampillai A, Standish BA, Moriyama EH, Khurana M, Munce NR, Leung MK, Jiang J, Cable A, Wilson BC, Vitkin IA. Speckle variance detection of microvasculature using swept-source optical coherence tomography. *Opt Lett*. 2008; 33:1530–1532. [PubMed: 18594688]
49. Mariampillai A, Leung MK, Jarvi M, Standish BA, Lee K, Wilson BC, Vitkin A, Yang VX. Optimized speckle variance oct imaging of microvasculature. *Opt Lett*. 2010; 35:1257–1259. [PubMed: 20410985]
50. Enfield J, Jonathan E, Leahy M. In vivo imaging of the microcirculation of the volar forearm using correlation mapping optical coherence tomography (cmoct). *Biomed Opt Express*. 2011; 2:1184–1193. [PubMed: 21559130]
51. Jia Y, Tan O, Tokayer J, Potsaid B, Wang Y, Liu JJ, Kraus MF, Subhash H, Fujimoto JG, Hornegger J. Split-spectrum amplitude-decorrelation angiography with optical coherence tomography. *Opt Express*. 2012; 20:4710–4725. [PubMed: 22418228]
52. Leitgeb RA, Schmetterer L, Drexler W, Fercher A, Zawadzki R, Bajraszewski T. Real-time assessment of retinal blood flow with ultrafast acquisition by color doppler fourier domain optical coherence tomography. *Opt Express*. 2003; 11:3116–3121. [PubMed: 19471434]
53. Leitgeb RA, Schmetterer L, Hitzenberger CK, Fercher AF, Berisha F, Wojtkowski M, Bajraszewski T. Real-time measurement of in vitro flow by fourier-domain color doppler optical coherence tomography. *Opt Lett*. 2004; 29:171–173. [PubMed: 14744000]
54. Zhao Y, Chen Z, Saxer C, Shen Q, Xiang S, de Boer JF, Nelson JS. Doppler standard deviation imaging for clinical monitoring of in vivo human skin blood flow. *Opt Lett*. 2000; 25:1358–1360. [PubMed: 18066216]
55. Makita S, Hong Y, Yamanari M, Yatagai T, Yasuno Y. Optical coherence angiography. *Opt Express*. 2006; 14:7821–7840. [PubMed: 19529151]
56. Park BH, Pierce MC, Cense B, Yun SH, Mujat M, Tearney GJ, Bouma BE, de Boer JF. Real-time fiber-based multi-functional spectral-domain optical coherence tomography at 1.3  $\mu\text{m}$ . *Opt Express*. 2005; 13:3931–3944. [PubMed: 19495302]
57. Fingler J, Schwartz D, Yang C, Fraser SE. Mobility and transverse flow visualization using phase variance contrast with spectral domain optical coherence tomography. *Opt Express*. 2007; 15:12636–12653. [PubMed: 19550532]
58. Kim DY, Fingler J, Werner JS, Schwartz DM, Fraser SE, Zawadzki RJ. In vivo volumetric imaging of human retinal circulation with phase-variance optical coherence tomography. *Biomed Opt Express*. 2011; 2:1504–1513. [PubMed: 21698014]
59. Lee J, Srinivasan V, Radhakrishnan H, Boas DA. Motion correction for phase-resolved dynamic optical coherence tomography imaging of rodent cerebral cortex. *Opt Express*. 2011; 19:21258–21270. [PubMed: 22108978]
60. Zhang A, Zhang Q, Chen CL, Wang RK. Methods and algorithms for optical coherence tomography-based angiography: A review and comparison. *J Biomed Opt*. 2015; 20:100901. [PubMed: 26473588]
61. Wang RK, Jacques SL, Ma Z, Hurst S, Hanson SR, Gruber A. Three dimensional optical angiography. *Opt Express*. 2007; 15:4083–4097. [PubMed: 19532651]
62. An L, Qin J, Wang RK. Ultrahigh sensitive optical microangiography for in vivo imaging of microcirculations within human skin tissue beds. *Opt Express*. 2010; 18:8220–8228. [PubMed: 20588668]
63. Nam AS, Chico-Calero I, Vakoc BJ. Complex differential variance algorithm for optical coherence tomography angiography. *Biomed Opt Express*. 2014; 5:3822–3832. [PubMed: 25426313]
64. Goodman JW. *Statistical Optics* Wiley; New York, NY, USA: 2000
65. Wei W, Xu J, Baran U, Song S, Qin W, Qi X, Wang RK. Intervolume analysis to achieve four-dimensional optical microangiography for observation of dynamic blood flow. *J Biomed Opt*. 2016; 21:36005. [PubMed: 26968387]
66. Klein T, Wieser W, Reznicek L, Neubauer A, Kampik A, Huber R. Multi-mhz retinal oct. *Biomed Opt Express*. 2013; 4:1890–1908. [PubMed: 24156052]
67. Choi WJ, Qin W, Chen CL, Wang J, Zhang Q, Yang X, Gao BZ, Wang RK. Characterizing relationship between optical microangiography signals and capillary flow using microfluidic channels. *Biomed Opt Express*. 2016; 7:2709–2728. [PubMed: 27446700]

68. Kinnunen M, Myllylä R. Effect of glucose on photoacoustic signals at the wavelengths of 1064 and 532 nm in pig blood and intralipid. *J Phys D Appl Phys*. 2005; 38:2654.
69. Van Staveren HJ, Moes CJ, van Marie J, Prahl SA, Van Gemert MJ. Light scattering in Intralipid-10% in the wavelength range of 400–1100 nm. *Appl Opt*. 1991; 30:4507–4514. [PubMed: 20717241]
70. Su JP, Chandwani R, Gao SS, Pechauer AD, Zhang M, Wang J, Jia Y, Huang D, Liu G. Calibration of optical coherence tomography angiography with a microfluidic chip. *J Biomed Opt*. 2016; 21:86015. [PubMed: 27557344]
71. Denk W, Strickler JH, Webb WW. Two-photon laser scanning fluorescence microscopy. *Science*. 1990; 248:73–76. [PubMed: 2321027]
72. Zipfel WR, Williams RM, Webb WW. Nonlinear magic: Multiphoton microscopy in the biosciences. *Nat Biotechnol*. 2003; 21:1369–1377. [PubMed: 14595365]
73. Wang H, Baran U, Li Y, Qin W, Wang W, Zeng H, Wang RK. Does optical microangiography provide accurate imaging of capillary vessels?: Validation using multiphoton microscopy. *J Biomed Opt*. 2014; 19:106011. [PubMed: 25341071]
74. Ren H, Du C, Park K, Volkow ND, Pan Y. Quantitative imaging of red blood cell velocity in vivo using optical coherence doppler tomography. *Appl Phys Lett*. 2012; 100:233702. [PubMed: 22904572]
75. Ren H, Du C, Yuan Z, Park K, Volkow ND, Pan Y. Cocaine-induced cortical microischemia in the rodent brain: Clinical implications. *Mol Psychiatry*. 2012; 17:1017–1025. [PubMed: 22124273]
76. Chan AC, Merkle CW, Lam EY, Srinivasan VJ. Maximum Likelihood Estimation of Blood Velocity Using Doppler Optical Coherence Tomography SPIE BiOS; Bellingham, WA, USA: 2014 89349
77. Srinivasan VJ, Sakadžić S, Gorczynska I, Ruvinskaya S, Wu W, Fujimoto JG, Boas DA. Quantitative cerebral blood flow with optical coherence tomography. *Opt Express*. 2010; 18:2477–2494. [PubMed: 20174075]
78. Ploner SB, Moulton EM, Choi W, Waheed NK, Lee B, Novais EA, Cole ED, Potsaid B, Husvogt L, Schottenhamml J. Toward quantitative optical coherence tomography angiography: Visualizing blood flow speeds in ocular pathology using variable interscan time analysis. *Retina*. 2016; 36:S118–S126. [PubMed: 28005670]
79. Bonner R, Nossal R. Model for laser doppler measurements of blood flow in tissue. *Appl Opt*. 1981; 20:2097–2107. [PubMed: 20332893]
80. Faber DJ, van der Meer FJ, Aalders MC, van Leeuwen TG. Hematocrit-dependence of the scattering coefficient of blood determined by optical coherence tomography. Proceedings of the Saratov Fall Meeting 2005: Optical Technologies in Biophysics and Medicine VII; Saratov, Russia. 27–30 October 2005; Bellingham, WA, USA: SPIE; 2006 61639
81. Faber DJ, van Leeuwen TG. Are quantitative attenuation measurements of blood by optical coherence tomography feasible? *Opt Lett*. 2009; 34:1435–1437. [PubMed: 19412297]
82. Srinivasan VJ, Radhakrishnan H. Optical coherence tomography angiography reveals laminar microvascular hemodynamics in the rat somatosensory cortex during activation. *NeuroImage*. 2014; 102:393–406. [PubMed: 25111471]
83. Tokayer J, Jia Y, Dhalla AH, Huang D. Blood flow velocity quantification using split-spectrum amplitude-decorrelation angiography with optical coherence tomography. *Biomed Opt Express*. 2013; 4:1909–1924. [PubMed: 24156053]
84. Choi WJ, Li Y, Qin W, Wang RK. Cerebral capillary velocimetry based on temporal oct speckle contrast. *Biomed Opt Express*. 2016; 7:4859–4873. [PubMed: 28018711]
85. Hartinger AE, Nam AS, Chico-Calero I, Vakoc BJ. Monte carlo modeling of angiographic optical coherence tomography. *Biomed Opt Express*. 2014; 5:4338–4349. [PubMed: 25574442]
86. Yi J, Chen S, Backman V, Zhang HF. In vivo functional microangiography by visible-light optical coherence tomography. *Biomed Opt Express*. 2014; 5:3603–3612. [PubMed: 25360376]
87. Chong SP, Merkle CW, Leahy C, Radhakrishnan H, Srinivasan VJ. Quantitative microvascular hemoglobin mapping using visible light spectroscopic optical coherence tomography. *Biomed Opt Express*. 2015; 6:1429–1450. [PubMed: 25909026]

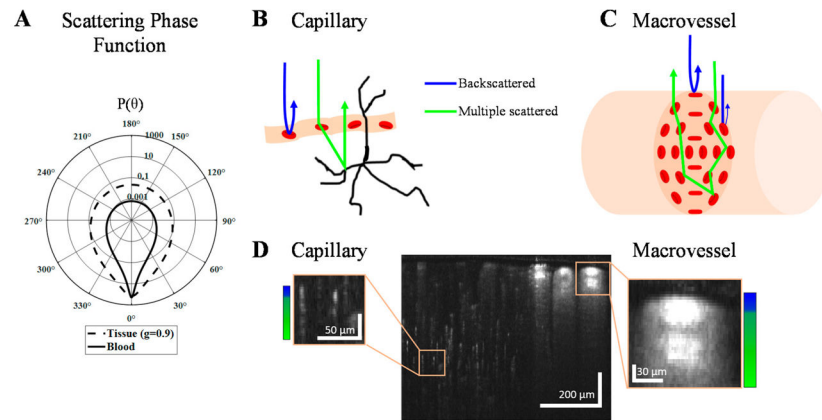
88. Pan Y, You J, Volkow ND, Park K, Du C. Ultrasensitive detection of 3d cerebral microvascular network dynamics in vivo. *Neuroimage*. 2014; 103:492–501. [PubMed: 25192654]
89. Merkle CW, Leahy C, Srinivasan VJ. Dynamic contrast optical coherence tomography images transit time and quantifies microvascular plasma volume and flow in the retina and choriocapillaris. *Biomed Opt Express*. 2016; 7:4289–4312. [PubMed: 27867732]
90. Merkle CW, Srinivasan VJ. Laminar microvascular transit time distribution in the mouse somatosensory cortex revealed by dynamic contrast optical coherence tomography. *Neuroimage*. 2016; 125:350–362. [PubMed: 26477654]
91. Assadi H, Demidov V, Karshafian R, Douplik A, Vitkin IA. Microvascular contrast enhancement in optical coherence tomography using microbubbles. *J Biomed Opt*. 2016; 21:076014.
92. Barton JK, Hoying JB, Sullivan CJ. Use of microbubbles as an optical coherence tomography contrast agent. *Acad Radiol*. 2002; 9:S52–S55. [PubMed: 12019894]



**Figure 1.**

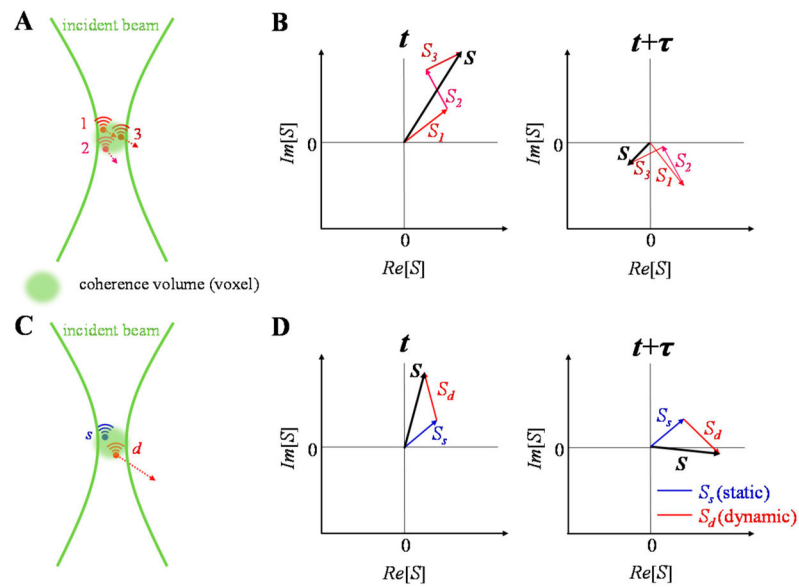
(A) Flow in capillaries (microvessels with diameters of  $<10 \mu\text{m}$ ) is single-file, usually with highly variable hematocrits that fall below systemic levels; (B) On the other hand, macrovascular flow often follows a blunted laminar profile at near-systemic hematocrits. Consequently, different approaches are required to quantify microvascular versus macrovascular hemodynamics via OCTA (Optical Coherence Tomography Angiography) imaging.





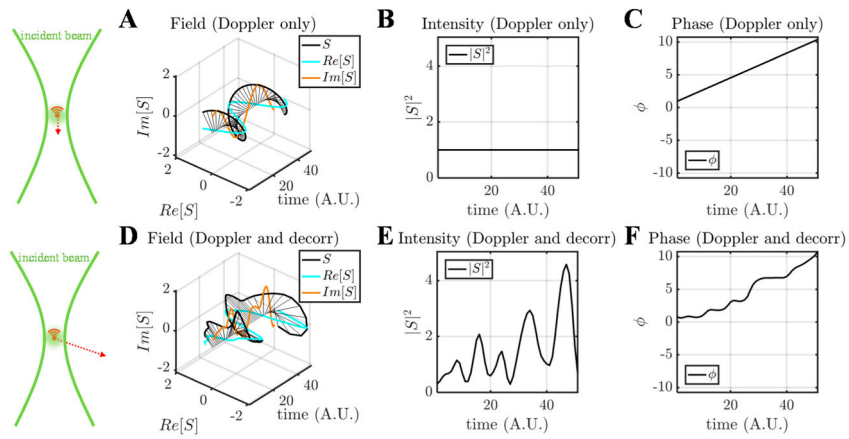
**Figure 2.**

Single and multiple scattering in the OCTA of capillaries versus macrovasculature. (A) Blood has a high scattering anisotropy, leading to a high probability of detecting multiple scattered light paths; (B) For capillaries, dynamic RBC (red blood cell) forward scattering precedes or follows static tissue backscattering, which leads to “multiple scattering” tails; (C) In large vessels, the backscattering cross-section is determined by the shear-induced orientation of RBCs with their flat face parallel to the shear force. If the vessel lumen exceeds a scattering length, multiple intravascular dynamic scattering events (green) before detection are likely; (D) Cross-sectional OCT (Optical Coherence Tomography) angiogram of the mouse brain at 1300 nm (complex interframe subtraction method) with a qualitative colorbar showing the balance of backscattered light (blue) and multiple scattered light (green) in a capillary (left) and macrovessel (right).



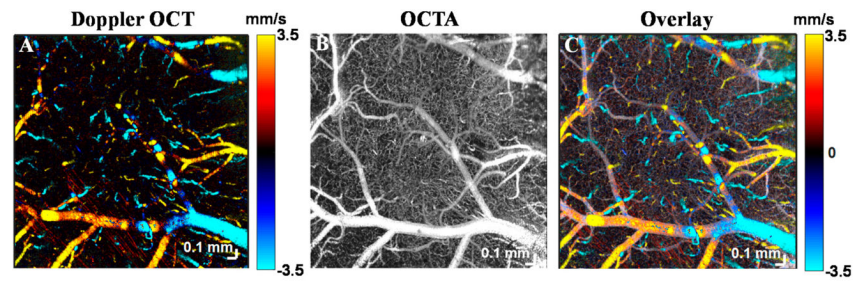
**Figure 3.**

The motion of scatterers in a coherence volume gives rise to complex field fluctuations that form the basis for OCTA signals. The contributions to the complex field are shown at two different points in time ( $t$  and  $t + \tau$ ). **(A,B)** Field fluctuations due to dynamic scatterers in a coherence volume. **(C,D)** Field fluctuations due to a combination of static (blue) and dynamic (red) scatterers in a coherence volume.



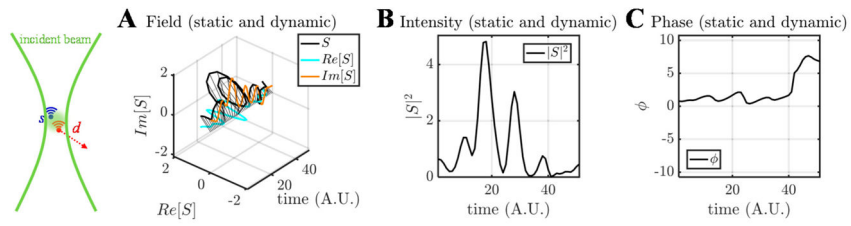
**Figure 4.**

The major categories of OCT signal fluctuations are Doppler shifts and decorrelation. Comparison of complex field, intensity, and phase time courses, for the case of a pure Doppler shift (**A–C**) and a Doppler shift with decorrelation (**D–F**). For a pure Doppler shift, the field traces out a helical pattern (**A**), whereas decorrelation introduces random deviations from this pattern (**D**).

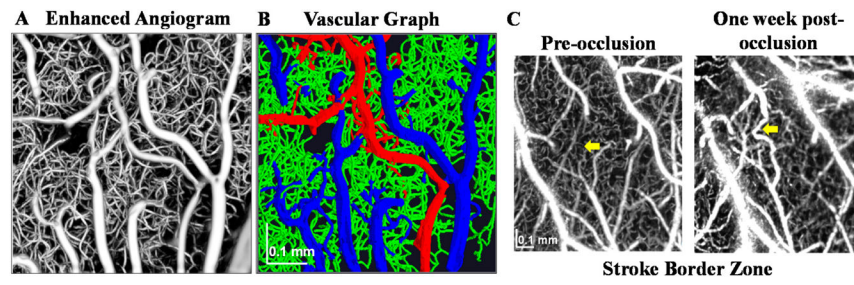


**Figure 5.**

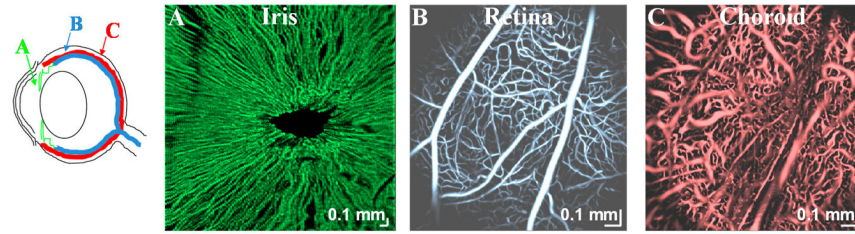
Doppler OCT and OCTA in the mouse brain. **(A)** Doppler OCT can visualize flow based on Doppler shifts, caused by motion in the axial direction, towards or away from the probe beam. On the other hand, OCTA visualizes flow based on decorrelation, usually caused by translational motion through the coherence volume, as well as Doppler shifts. The overlay of both methods **(C)** shows that Doppler OCT is mainly limited to ascending venules or descending arterioles, where Doppler shifts dominate. On the other hand, OCTA, which is sensitive to decorrelation, more comprehensively shows vasculature, including regions with predominantly transverse flow. A standard Kasai algorithm was used on transversally oversampled images for **(A)** and a complex interframe subtraction method was used on rapidly acquired repeated cross-sectional images for **(B)**.



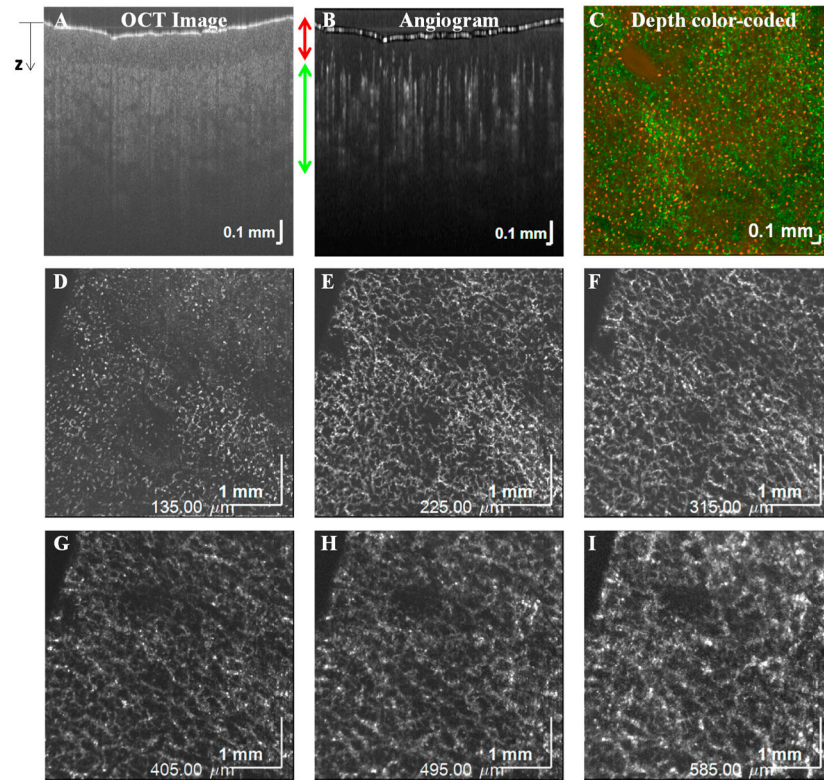
**Figure 6.** Comparison of complex field (A), intensity (B), and phase (C) time courses when both static and dynamic scattering are present in a coherence volume (with Doppler shift and decorrelation of the dynamic component). Such coherence volumes are present at the edges of vessels.



**Figure 7.** OCTA microscopy of the mouse brain enables an assessment of vascular connectivity (A,B) and longitudinal monitoring of microvascular remodeling (C) one week after distal middle cerebral artery occlusion (yellow arrow).

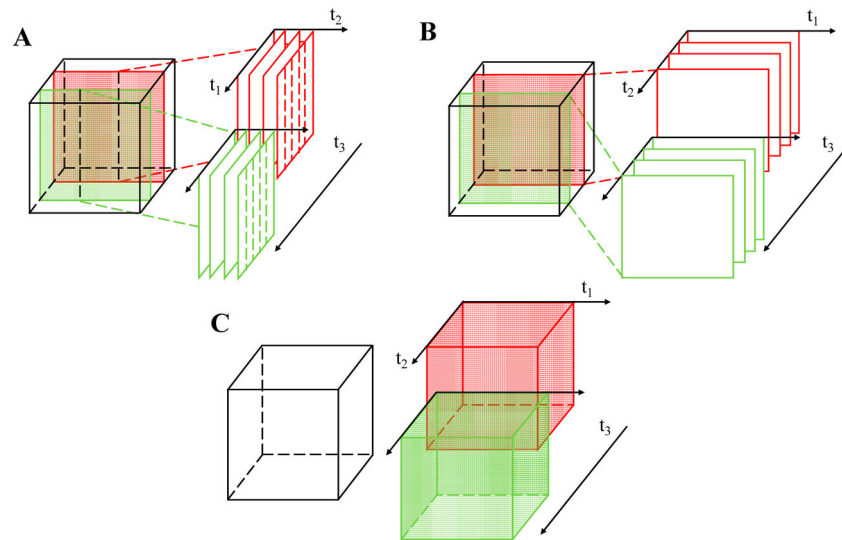


**Figure 8.** Ocular OCTA of iris (**A**), retina (**B**), and choroid (**C**). Hessian vesselness enhancement was applied to retinal and choroidal vasculature before display. Note that the pupil was dilated prior to OCTA acquisition for (**B,C**).



**Figure 9.** OCTA of the skin on a pig ear. OCT cross-sectional intensity image (A) and angiogram (B) determined by complex subtraction. (C) Overlay of superficial vessels in the epidermis (red) with deeper vasculature in the dermis (green). (D–I) Maximum intensity projections centered at different axial (z) positions relative to the surface.





**Figure 10.**

Volumetric OCTA scanning protocols can operate with respect to A-scan (A), frame (B), or volume (C). A cubic volume is scanned with time scales  $t_1$ ,  $t_2$ , and  $t_3$ . Data acquired sequentially along time scale  $t_3$  are shown in red and green. (A) MB-scan: multiple A-scans are obtained at one lateral position before switching to the next lateral position; (B) BM-scan or interframe scan: multiple B-scans are obtained at one cross-sectional location before switching to the next location; (C) Intervolume scan: successive scans of the whole volume. Each scan achieves a progressively larger observation time for a single spatial position ( $t_3 > t_2 > t_1$ ).

**Table 1**

Symbols or variables used and their meaning.

Symbol	Meaning
$S$	Complex OCT signal/field
$ S $	Amplitude of the OCT signal
$I =  S ^2$	Intensity of the OCT signal
$\varnothing$	Phase of the OCT signal
$S_m$	OCT field from one scatterer
SV	Speckle variance
cmOCT	Correlation mapping OCT signal
PV	Phase variance
$\varnothing$	Phase difference
$S$	Complex field difference
CDV	Complex differential variance
R	Autocorrelation function
P	Power spectral density

**Table 2**

Classification of OCTA algorithms.

Category	Classification
OCT signal	Field vs. Intensity/Amplitude vs. Phase
Calculation	Variance/Difference vs. Correlation
Averaging method	Temporal vs. Spatial vs. Spectral
Normalization	Normalized vs. Non-normalized

Author Manuscript

Author Manuscript

Author Manuscript

Author Manuscript