

UCLA

UCLA Previously Published Works

Title

Polycythemia is Associated with Lower Incidence of Severe COPD Exacerbations in the SPIROMICS Study.

Permalink

<https://escholarship.org/uc/item/9fc572p0>

Journal

Chronic obstructive pulmonary diseases (Miami, Fla.), 8(3)

ISSN

2372-952X

Authors

Fawzy, Ashraf
Woo, Han
Balasubramanian, Aparna
[et al.](#)

Publication Date

2021-07-28

DOI

10.15326/jcopdf.2021.0216

Peer reviewed

Brief Report

Polycythemia is Associated with Lower Incidence of Severe COPD Exacerbations in the SPIROMICS Study

Ashraf Fawzy, MD, MPH¹ Han Woo, PhD¹ Aparna Balasubramanian, MD, MHS¹ Igor Barjaktarevic, MD, PhD²
R. Graham Barr, MD, DrPH³ Russell P. Bowler, MD, PhD⁴ Alejandro P. Comellas, MD⁵ Christopher B. Cooper, MD, PhD²
David Couper, PhD⁶ Gerard J. Criner, MD⁷ Mark T. Dransfield, MD⁸ MeiLan K. Han, MD, MS⁹ Eric A. Hoffman, PhD¹⁰
Richard E. Kanner, MD¹¹ Jerry A. Krishnan, MD, PhD¹² Fernando J. Martinez, MD, MS¹³
Meredith McCormack, MD, MHS¹ Robert Paine III, MD¹¹ Stephen Peters, MD, PhD¹⁴ Robert Wise, MD¹
Prescott G. Woodruff, MD, MPH¹⁵ Nadia N. Hansel, MD, MPH¹ Nirupama Putcha, MD, MHS¹

Abstract

Secondary polycythemia has long been recognized as a consequence of chronic pulmonary disease and hypoxemia and is associated with lower mortality and fewer hospitalizations among individuals with chronic obstructive pulmonary disease (COPD)-prescribed long-term oxygen therapy. This study investigates the association of polycythemia with COPD severity, phenotypic features, and respiratory exacerbations in a contemporary and representative sample of individuals with COPD. Current and former smokers with COPD (forced expiratory volume in 1 second [FEV₁] to forced vital capacity [FVC] ratio <70%) without a history of hematologic/oncologic disorders were selected from the SubPopulations and Intermediate Outcomes Measures In COPD Study (SPIROMICS), a multi-center observational cohort. Participants with polycythemia (hemoglobin ≥ 15 g/dL [females] or ≥ 17 g/dL [males]), were compared to individuals without anemia (hemoglobin ≥ 12 g/dL [females] or ≥ 13 g/dL [males]). Cross-sectional outcomes including percent predicted FEV₁, respiratory symptoms, quality of life, exercise tolerance and percentage and distribution of emphysema (voxels < -950 Hounsfield units [HU] at total lung capacity) were evaluated using linear or logistic regression. Longitudinal acute exacerbation of COPD (AECOPD) and severe AECOPD (requiring an emergency department visit or hospitalization) were assessed using zero-inflated negative binomial models. Among 1261 participants, 148 (11.7%) had polycythemia. Average follow-up was 4.2 \pm 1.7 years and did not differ by presence of polycythemia. In multivariate analysis, compared to participants with normal hemoglobin, polycythemia was associated with a reduced rate of severe AECOPD (adjusted incidence rate ratio 0.57, 95% CI: 0.33-0.98), lower percent predicted FEV₁, lower resting oxygen saturation, increased upper to lower lobe ratio of emphysema, and a greater degree of emphysema, though the latter was attenuated after adjusting for lung function. There were no significant differences in total AECOPD, patient-reported outcomes, or exercise tolerance. These findings suggest that polycythemia, while associated with less favorable physiologic parameters, is not independently associated with symptoms, and is associated with fewer severe exacerbations. Future studies should explore the potentially protective role of increased hemoglobin beyond the correction of anemia.

Abbreviations: chronic obstructive pulmonary disease, **COPD**; forced expiratory volume in 1 second, **FEV₁**; forced vital capacity, **FVC**; SubPopulations and Intermediate Outcomes Measures In COPD Study, **SPIROMICS**; Hounsfield units, **HU**; acute exacerbation of COPD, **AECOPD**; long-term oxygen therapy, **LTOT**; complete blood counts, **CBC**; COPD Assessment Test, **CAT**; modified Medical Research Council, **mMRC**; 6-minute Walk Test, **6MWT**; St George's Respiratory Questionnaire, **SGRQ**; computed tomography, **CT**; total lung capacity, **TLC**; Hospital Anxiety and Depression Scale, **HADS**; standard deviation, **SD**; patient-reported outcomes, **PROs**; adjusted incidence rate ratio, **aIRR**

Funding Support: SPIROMICS was supported by contracts from the National Institutes of Health (NIH)/National Heart, Lung, and Blood Institute (NHLBI) (HHSN268200900013C, HHSN268200900014C, HHSN268200900015C, HHSN268200900016C, HHSN268200900017C, HHSN268200900018C, HHSN268200900019C, HHSN268200900020C), grants from the NIH/NHLBI (U01 HL137880 and U24 HL141762), and supplemented by contributions made through the Foundation for the NIH and the COPD Foundation from AstraZeneca/MedImmune, Bayer, Bellerophon Therapeutics, Boehringer-Ingelheim Pharmaceuticals, Inc., Chiesi Farmaceutici S.p.A., Forest Research Institute, Inc., GlaxoSmithKline, Grifols Therapeutics, Inc., Ikaria, Inc., Novartis Pharmaceuticals Corporation, Nycomed GmbH, ProterixBio, Regeneron Pharmaceuticals, Inc., Sanofi, Sunovion, Takeda Pharmaceutical Company, and Theravance Biopharma and Mylan. AF is supported by NIH/NHLBI K23HL151758

Date of Acceptance: June 2, 2021 | **Published Online Date:** June 30, 2021

Citation: Fawzy A, Woo H, Balasubramanian A, et al. Polycythemia is associated with lower incidence of severe COPD exacerbations in the SPIROMICS study. *Chronic Obstr Pulm Dis.* 2021;8(3):326-335. doi: <https://doi.org/10.15326/jcopdf.2021.0216>

- 1 Division of Pulmonary and Critical Care Medicine, Johns Hopkins University, Baltimore, Maryland, United States
- 2 Department of Medicine, David Geffen School of Medicine, University of California, Los Angeles, California, United States
- 3 Department of Medicine, Columbia University College of Physicians and Surgeons, New York, New York, United States
- 4 Division of Pulmonary, Critical Care and Sleep Medicine, National Jewish Health, Denver, Colorado, United States
- 5 Division of Pulmonary, Critical Care, and Occupational Medicine, College of Medicine, University of Iowa, Iowa City, Iowa, United States
- 6 Department of Biostatistics, Gillings School of Global Public Health, University of North Carolina at Chapel Hill, Chapel Hill, North Carolina, United States
- 7 Department of Thoracic Surgery and Medicine, Temple University, Philadelphia, Pennsylvania, United States
- 8 Division of Pulmonary, Allergy and Critical Care Medicine, University of Alabama at Birmingham, Birmingham, Alabama, United States
- 9 Division of Pulmonary and Critical Care Medicine, University of Michigan, Ann Arbor, Michigan, United States
- 10 Department of Radiology, Medicine and Biomedical Engineering, University of Iowa, Iowa City, Iowa, United States
- 11 Division of Respiratory, Critical Care and Occupational Medicine, University of Utah, Salt Lake City, Utah, United States
- 12 Division of Pulmonary, Critical Care, Sleep, and Allergy, University of Illinois at Chicago, Chicago, Illinois, United States
- 13 Division of Pulmonology and Critical Care Medicine, Weill-Cornell Medical Center, Cornell University, New York, New York, United States
- 14 Section on Pulmonary, Critical Care, Allergy and Immunologic Diseases, Wake Forest University, Winston-Salem, North Carolina, United States
- 15 Division of Pulmonary, Critical Care and Sleep Medicine, University of California San Francisco, San Francisco, California, United States

Address correspondence to:

Ashraf Fawzy, MD, MPH
5501 Hopkins Bayview Circle
Baltimore, MD 21224
Email: afawzy1@jhmi.edu

Keywords:

polycythemia; acute exacerbation of COPD; SPIROMICS

Introduction

While several studies have highlighted the association of anemia with adverse outcomes in chronic obstructive pulmonary disease (COPD),¹⁻⁵ secondary polycythemia has also been recognized as a consequence of chronic pulmonary disease and hypoxemia for over a century.^{6,7} Polycythemia has been associated with lower mortality and fewer hospitalizations among individuals with COPD-prescribed long-term oxygen therapy (LTOT),^{8,9} while other studies found no association between polycythemia and respiratory outcomes.^{10,11} The implications of polycythemia in a more contemporary and representative sample of individuals with COPD is unclear. Furthermore, beyond hypoxemia, the phenotypic features of polycythemic individuals with COPD remains unexplored. This analysis of the well phenotyped, longitudinal SubPopulations and Intermediate Outcome Measures In COPD Study (SPIROMICS) investigates the association of polycythemia with COPD severity, phenotypic features, and respiratory exacerbations.

Methods

Current and former smokers with COPD (FEV₁/FVC < 70%) without a history of hematologic/oncologic disorders were selected for this analysis from SPIROMICS.¹² Baseline complete blood counts (CBC) were performed at certified laboratories at the respective sites. Polycythemia was defined as a hemoglobin concentration (Hgb) ≥ 15.0g/dL for women or ≥ 17.0g/dL for men.^{9,10,13} Participants with anemia (Hgb < 12.0g/dL for females, < 13.0g/dL for males) were excluded since results have been reported previously.⁵

Baseline evaluations included percent predicted

FEV₁, the COPD Assessment Test (CAT) score,¹⁴ the modified Medical Research Council (mMRC) questionnaire score,¹⁵ the 6-minute walk test in meters (6MWT),¹⁶ and the St George's Respiratory Questionnaire (SGRQ) score.¹⁷ Structured telephone questionnaires were conducted quarterly to ascertain acute exacerbation of COPD (AECOPD). AECOPDs were defined as respiratory symptoms treated with antibiotics or oral corticosteroids or requiring unscheduled health care utilization. Severe AECOPD included the subset requiring an emergency department visit or hospitalization. Whole lung, multi-detector row computed tomography (CT) scans were performed at baseline with breath hold at total lung capacity (TLC) and residual volume.¹⁸ Emphysema-like lung was calculated based on percentage of total lung voxels <950 Hounsfield units(HU) at TLC, and its distribution was characterized on a whole lung and lobar basis.

Linear or logistic regression comparing participants with baseline polycythemia to those with normal Hgb was used for cross-sectional outcomes. The association of polycythemia with AECOPD was investigated using zero-inflated negative binomial models (follow-up time as offset, FEV₁ as zero-inflation factor). Models were adjusted for age, sex, race, educational achievement, smoking status, altitude of clinical site (Colorado [5280 feet] or Utah [4226 feet] versus sea level [all other sites]), comorbidity count,¹⁹ platelet count,²⁰ and body mass index. Models investigating AECOPD were additionally adjusted for percent predicted FEV₁, and cross-sectional outcomes were performed with and without percent predicted FEV₁ as it may mediate some of the outcomes. CT scanner model or self-reported AECOPD in the prior 12 months (yes/no) was added to models evaluating emphysema and AECOPD, respectively. Effect modification by sex, smoking status, oxygen use, and hypoxemia (oxygen saturation <88% or <92%) at rest or following the 6MWT (performed with supplemental oxygen for participants with usual use) were evaluated. All analyses were performed using SAS 9.4 (Carey, North Carolina). SPIROMICS was approved by institutional review boards at each center and participants provided written informed consent.

Results

Among 1845 SPIROMICS participants with COPD, 1829 had a CBC performed at baseline of whom 161 (8.8%) were excluded for anemia. Of the remaining 1668 participants, 33 (2%) did not accrue follow-up time, 91 (5.5%) were excluded for missing covariates, and 283 (17%) were excluded for self-reported history of hematologic/oncologic disorder. Among the 1261 eligible participants, 11.7% had polycythemia. Individuals with polycythemia were more likely female, current smokers, underweight, and living at elevation (Table 1). Notably 16.9% of individuals with polycythemia did not have any of the traditional risk factors for secondary polycythemia such as resting or ambulatory hypoxemia (<88%), supplemental oxygen use, living at elevation, or current smoking status. After adjusting for covariates, compared to normal Hgb, polycythemia was associated with significantly lower percent predicted FEV₁, lower resting oxygen saturation, and increased upper to lower lobe ratio of emphysema (Table 2). A significant association between polycythemia and higher percentage of emphysema was completely attenuated with addition of percent predicted FEV₁ to the multivariable model (Table 2). There was no association of polycythemia with patient-reported outcomes (PROs) or exercise tolerance (Table 2).

Participants were followed up for 4.2±1.7 years, which was similar across Hgb categories ($p=0.2$). Compared to normal Hgb, polycythemia was associated with a reduced rate of severe AECOPDs (adjusted incidence rate ratio [aIRR] 0.57, 95% CI: 0.33-0.98). The incidence rate of total AECOPD among participants with polycythemia was not significantly different than among participants with normal Hgb (aIRR 0.79, 95% CI: 0.55-1.1). There was no significant effect modification of the association between polycythemia and severe exacerbations by sex, smoking status, oxygen use, or hypoxemia (Figure 1).

Discussion

In a contemporary, heterogeneous, and well phenotyped sample of individuals with COPD, polycythemia was associated with a reduced rate of severe AECOPD but no difference in total AECOPDs. Despite an association of polycythemia with worse

Table 1. Baseline Characteristics of SPIROMICS Participants by Hemoglobin Concentration Category Based on the Main Analysis Definition of Polycythemia^a

Characteristics, n (%) or mean±SD	Normal Hemoglobin (n=1113)	Polycythemia (n=148)	p-value ^b
Age , mean±SD	64.7±7.9	64.2±7.8	0.4
Female	402 (36.1)	100 (67.6)	<0.0001
Race: Black	169 (15.2)	11 (7.4)	0.01
Less than High School Education	417 (37.9)	53 (38.4)	0.9
FEV₁ % Predicted (post-bronchodilator)	61.7±23.2	58.7±19.7	0.1
Current Smoker	362 (32.5)	82 (55.4)	<0.0001
Pack Years Smoked	52.5±27	51.7±22.1	0.7
Body Mass Index (kg/m ²), mean±SD	27.5±5.1	26.2±5.5	0.003
Underweight (<18.5)	30 (2.7)	10 (6.8)	0.01
Normal weight or overweight (18.5-<30)	736 (66.1)	100 (67.6)	
Obese (≥30)	347 (31.2)	38 (25.7)	
Living at Elevation^c	148 (13.3)	43 (29.1)	<0.0001
Supplemental Oxygen Use^d			
Yes	198 (17.8)	21 (14.2)	0.5
No	875 (78.6)	120 (81.1)	
Nocturnal Only	40 (3.6)	7 (4.7)	
Resting Oxygen Saturation (%), mean±SD	94.9±2.7	94.2±2.9	0.001
Oxygen Saturation After 6-minute Walk Test (m), mean±SD	92±5.4	91.1±5.7	0.07
Hemoglobin (g/dL), mean±SD	14.4±1.1	16.4±1.3	<0.0001
Platelet Count (x10 ⁹ /L), mean±SD	243±62	242±60	0.9
Number of Comorbidities^e , mean±SD	2.2±1.5	2.0±1.3	0.2
Asthma Diagnosed by a Physician	245 (22.2)	30 (20.7)	0.7
Hypertension	565 (50.8)	58 (39.2)	0.008
Coronary Arterial Disease	204 (18.3)	16 (10.8)	0.02
Congestive Heart Failure	28 (2.5)	0 (0)	0.07
Stroke	35 (3.2)	6 (4.1)	0.6
Peripheral Artery Disease	69 (6.2)	6 (4.1)	0.3
Diabetes	149 (13.4)	6 (4.1)	0.001
Obstructive Sleep Apnea	228 (21.5)	27 (19.2)	0.5
Gastroesophageal Reflux Disease	335 (30.1)	45 (30.4)	0.9
Depression or Anxiety (HADS-D or HADS-A ≥8)	363 (33.1)	60 (41.1)	0.06
Inhaled Corticosteroids	515 (46.3)	70 (47.3)	0.8

^aHemoglobin concentration ≥15.0g/dL for women or ≥17.0g/dL for men, excluding participants with anemia.

^bBased on *t*-test for means and Chi-squared test or Fisher's Exact test for proportions.

^cParticipant enrolled at National Jewish in Denver, Colorado (5280 feet) or University of Utah in Salt Lake City, Utah (4226 feet).

^dParticipant response to "Do you use supplemental oxygen (prescribed by your doctor) at home?"

^eComorbidity count includes asthma, obstructive sleep apnea, hypertension, coronary heart disease, congestive heart failure, gastroesophageal reflux disease, diabetes, stroke, and psychiatric disease (depression or anxiety).

FEV₁=forced expiratory volume in 1 second; SD=standard deviation; HADS=Hospital Anxiety and Depression Scale

Table 2. Cross-Sectional Association of Polycythemia with Lung Function, Respiratory Symptoms, Quality of Life, Exercise Tolerance, Oxygen Saturation, and Emphysema

Characteristics, n (%) or mean ± SD	Multivariable Model	Multivariable Model + Percent Predicted FEV ₁
Outcome	Mean Difference (95% Confidence Interval)	
% Predicted FEV ₁	-4.2 (-8.2, -0.27)	N/A
6-Minute Walk Distance (meters)	8.2 (-11.8, 28.3)	15.5 (-3.1, 34.1)
St George's Respiratory Questionnaire Total Score	2.4 (-0.95, 5.8)	0.88 (-2.0, 3.8)
COPD Assessment Test Score	0.78 (-0.55, 2.1)	0.22 (-1.0, 1.4)
modified Medical Research Council Questionnaire	0.1 (-0.08, 0.28)	0.01 (-0.15, 0.17)
Oxygen Saturation, Rest	-0.77 (-1.3, -0.3)	-0.62 (-1.1, -0.17)
Oxygen Saturation, After 6-minute Walk Test	-0.74 (-1.7, 0.22)	-0.31 (-1.2, 0.55)
% Emphysema ^a	2.1 (0.29, 3.9)	1.1 (-0.43, 2.6)
Ratio of Upper to Lower Emphysema ^a	1.1 (0.17, 2.0)	1.1 (0.17, 2.0)
	Odds Ratio (95% Confidence Interval)	
At Least 1 Exacerbation, prior year	1.1 (0.74–1.7)	0.97 (0.64–1.5)
At Least 1 Severe Exacerbation, prior year	0.76 (0.41–1.4)	0.86 (0.5–1.5)
Frequent Exacerbator (>1 severe exacerbation in prior year)	1.1 (0.61–2.0)	0.76 (0.42–1.4)
Oxygen Saturation <92% at Rest	1.6 (0.98–2.5)	1.4 (0.85–2.2)
Oxygen Saturation <88% at Rest	2.2 (0.66–7.2)	1.8 (0.58–5.3)
Oxygen Saturation <92% After 6-minute Walk Test	1.2 (0.80–1.8)	1.2 (0.77–1.8)
Oxygen Saturation <88% After 6-minute Walk Test	1.1 (0.71–1.8)	1.2 (0.66–1.7)

Multivariable model is adjusted for age, sex, race, educational achievement, current smoking status, altitude of clinical site location, comorbidity count, and body mass index.

Bolded values are statistically significant at $p < 0.05$.

^aAdditionally, adjusted for CT scanner model.

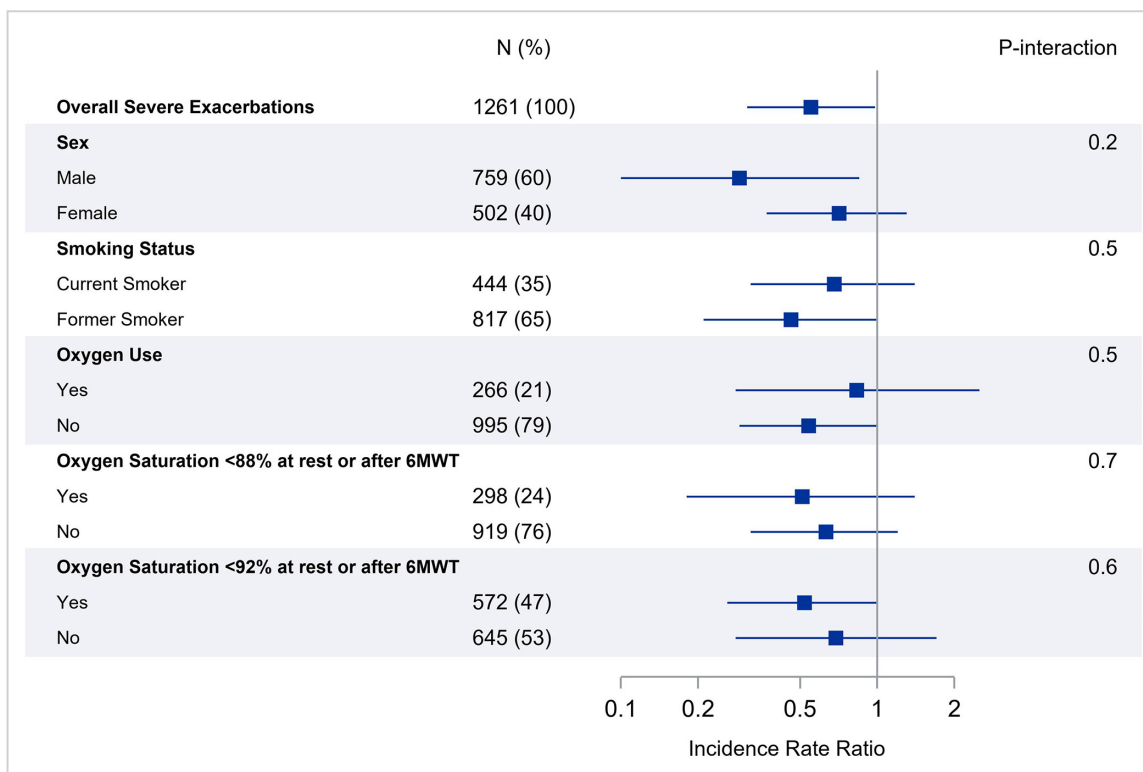
FEV₁=forced expiratory volume in 1 second; COPD=chronic obstructive pulmonary disease.

disease severity, increased emphysema, and a higher ratio of upper to lower lobe ratio of emphysema, there was no independent association between polycythemia and PROs or exercise tolerance. This adds to the recent study in the same cohort showing that individuals with COPD and anemia had more severe disease, worse exercise capacity, and greater dyspnea.⁵ These findings replicate similar results in individuals with advanced COPD prescribed LTOT without evidence of effect modification by presence of hypoxia or oxygen use.^{8,9} Past studies reporting no association between polycythemia and severe AECOPD had notable limitations including a dearth of female participants or low polycythemia prevalence.^{10,11} A historical study suggesting improved lung capacity and hemodynamic parameters related to venesection in a small group of individuals with emphysema and polycythemia

included individuals with much higher average hematocrit levels than was observed in this modern cohort,²¹ while another study demonstrated no difference in the hemodynamic status or pulmonary function of individuals with emphysema and polycythemia after repeated phlebotomies that reduced hematocrit to normal levels.²² Furthermore, although polycythemia was associated with less favorable physiologic parameters such as worse lung function, more emphysema, and greater ratio of upper to lower lobe emphysema, which has been linked to worse quality of life and greater FEV₁ decline,^{23,24} there was no independent association of polycythemia with more symptoms or worse quality of life.

The polycythemia prevalence of 11.7% in the SPIROMICS cohort is consistent with prior estimates of 5.9–18.1%, although definitions are

Figure 1. Incidence Rate Ratio^a of Severe Exacerbations Among Participants with Baseline Polycythemia Compared to Normal Hemoglobin Concentration^b



^a95% confidence interval

^bOverall effects and subgroup analyses (p-interaction indicates p-value for interaction term for subgroup*polycythemia status)

6MWT=6-minute walk test

inconsistent.⁸⁻¹⁰ Polycythemia was more prevalent among current smokers and individuals living at altitude and was associated with lower resting but not exertional oxygen saturation. However, not all individuals with polycythemia in this study had one of the traditional risk factors identified (living at elevation, oxygen use, smoking, or hypoxemia) implying that nearly one fifth of individuals with secondary polycythemia may have unrecognized risk factors including awake or nocturnal hypoxemia.²⁵ Thus, presence of polycythemia without clearly identified risk factors should prompt additional investigation such as ambulatory or nocturnal oximetry which may identify clinically significant hypoxemia warranting intervention that could potentially improve quality of life, exercise tolerance, or avert cognitive impairment.²⁶⁻²⁸

There are limitations to this study. Changes in Hgb concentration during follow-up were not captured

and history of kidney disease, which impacts erythropoiesis and Hgb, was not collected. Moderate AECOPDs represent a more heterogeneous outcome and are prone to misclassification compared with severe exacerbations that result in an emergency department visit or hospitalization, which may have attenuated any association between polycythemia and total AECOPDs. Inferences regarding associations between hemoglobin and ambulatory oxygen saturation are limited due to variability in administration of the 6MWT test and variable use of home oxygen with ambulation. Ultimately, these findings support previous literature describing improved outcomes among individuals with COPD and polycythemia. Future studies should explore the potentially protective role of increased Hgb beyond the correction of anemia.

Acknowledgements

Author Contributions: AF and NP contributed to the conception and design of the study and drafted the manuscript; IB, RGB, RPB, APC, CBC, DC, GJC, MTD, MKH, EAH, REK, JAK, FJM, RP, SP, PGW, and NNH contributed to the acquisition of the data. AF and HW analyzed the data; AF, NNH, and NP contributed to data interpretation; all authors contributed to revisions of the manuscript, reviewed, and approved the final manuscript. AB, MM, RW, and all other authors contributed to revisions of the manuscript and reviewed and approved the final manuscript.

The authors thank the SPIROMICS participants and participating physicians, investigators, and staff for making this research possible. More information about the study and how to access SPIROMICS data is available at www.spiromics.org. The authors would like to acknowledge the University of North Carolina at Chapel Hill BioSpecimen Processing Facility for sample processing, storage, and sample disbursements (<http://bsp.web.unc.edu/>).

We would like to acknowledge the following current and former investigators of the SPIROMICS sites and reading centers: Neil E. Alexis, MD; Wayne H. Anderson, PhD; Mehrdad Arjomandi, MD; Igor Barjaktarevic, MD, PhD; R. Graham Barr, MD, DrPH; Patricia Basta, PhD; Lori A. Bateman, MSc; Surya P. Bhatt, MD; Eugene R. Bleeker, MD; Richard C. Boucher, MD; Russell P. Bowler, MD, PhD; Stephanie A. Christenson, MD; Alejandro P. Comellas, MD; Christopher B. Cooper, MD, PhD; David J. Couper, PhD; Gerard J. Criner, MD; Ronald G. Crystal, MD; Jeffrey L. Curtis, MD; Claire M. Doerschuk, MD; Mark T. Dransfield, MD; Brad Drummond, MD; Christine M. Freeman, PhD; Craig Galban, PhD; MeiLan K. Han, MD, MS; Nadia N. Hansel, MD, MPH; Annette T. Hastie, PhD; Eric A. Hoffman, PhD; Yvonne Huang, MD; Robert J. Kaner, MD; Richard E. Kanner, MD; Eric C. Kleerup, MD; Jerry A. Krishnan, MD, PhD; Lisa M. LaVange, PhD; Stephen C. Lazarus, MD; Fernando J. Martinez, MD, MS; Deborah A. Meyers, PhD; Wendy C. Moore, MD; John D. Newell Jr, MD; Robert Paine, III, MD; Laura Paulin, MD, MHS; Stephen P. Peters, MD, PhD; Cheryl Pirozzi, MD; Nirupama Putcha, MD, MHS; Elizabeth C. Oelsner, MD, MPH; Wanda K. O'Neal, PhD; Victor E. Ortega, MD, PhD; Sanjeev Raman, MBBS, MD; Stephen I. Rennard, MD; Donald P. Tashkin, MD; J. Michael Wells, MD; Robert A.

Wise, MD; and Prescott G. Woodruff, MD, MPH. The project officers from the Lung Division of the National Heart, Lung, and Blood Institute were Lisa Postow, PhD, and Lisa Viviano, BSN

Declaration of Interest

IB has received grants from Theravance, Mylan, Amgen and GE Healthcare and has consulted for Theravance, Mylan, AstraZeneca, GlaxoSmithKline, Grifols, Verona Pharma and GE Healthcare. RGB reports grants from the National Institutes of Health (NIH) and COPD Foundation pertaining to the current work. RW reports grants and personal fees from AstraZeneca, grants and personal fees from Boehringer Ingelheim, personal fees from Contrafect, grants and personal fees from GlaxoSmithKline, personal fees from Merck, grants and personal fees from Verona, personal fees from Mylan/Theravance, personal fees and non-financial support from Propeller Health, personal fees from Novartis, personal fees from Chmerix, personal fees from FSD Pharma, personal fees from AbbVie, personal fees from Bristol Myers Squibb, personal fees from Puretech, personal fees from Galderma, personal fees from Chiesi, outside the submitted work. PGW has received grants from the NIH and the COPD Foundation to support the cohort on which this work is based and grants from Genentech and personal fees from Glenmark Pharmaceuticals, Theravance, WSAAI, Sanofi, Regeneron, GlaxoSmithKline, and NGM Pharma outside the submitted work. NP has received grant funding from NIH for the work under consideration. NP has received grant funding from NIH and personal fees from CSL Behring and Pharmacosmos not related to the current work. EAH is a founder and shareholder of VIDA Diagnostics, a company commercializing lung image analysis software developed, in part, at the University of Iowa. JAK received research funding from NIH/National Heart, Lung, and Blood Institute (NHLBI), Sergey Brin Family Foundation, and Patient-Centered Outcomes Research Institute (PCORI), and consulting fees for serving on an advisory board with GlaxoSmithKline about monoclonal antibodies to treat SARS-CoV-2 infection. FJM has participated in COPD advisory boards supported by AstraZeneca, Sanofi/Regeneron, Csl Behring, Gala, Sunovion, Teva, GlaxoSmithKline, Novartis, Polarean and Pulmonx. He has participated in COPD

Study Steering Committees of work supported by AstraZeneca, Chiesi, GlaxoSmithKline, and Sanofi/Regeneron. He has presented disease state presentations for AstraZeneca, Boehringer Ingelheim, and GlaxoSmithKline. FJM also serves on adjudication committee for study sponsored by Medtronic. MCM has disclosed receiving royalties from UpToDate and consulting fees from Aridis outside of the scope of the published work. RP discloses grant support related to this work from the NHLBI and the COPD Foundation. He has received support for activity unrelated to the current work from the Department of Veterans Affairs (grant support) and Partner Therapeutics (consultancy). AC has received Grant money from the NIH. CBC reports grants from NIH/NHLBI, grants from Foundation for the NIH, grants from the

COPD Foundation, during the conduct of the study; personal fees from MGC Diagnostics, NUVAIRA and GlaxoSmithKline, outside the submitted work; and is a consultant for GlaxoSmithKline, AstraZeneca and VIDA. DC reports grants from NHLBI and the COPD Foundation related to the work in this manuscript. MTD reports grants from the NIH related to this work, grants from DOD and ALA unrelated to this work and personal fees from AstraZeneca, GlaxoSmithKline, Pulmonx and Teva unrelated to this work. MKH has received research support from Novartis and Sunovion. She has conducted industry sponsored studies with funds paid to the institution by Sanofi. She has consulted for GlaxoSmithKline, Boehringer Ingelheim, AZ, Cipla, Chiesi, Teva, Sanofi and Novartis. All other authors have nothing to disclose.

References

1. Ferrari M, Manea L, Anton K, et al. Anemia and hemoglobin serum levels are associated with exercise capacity and quality of life in chronic obstructive pulmonary disease. *BMC Pulm Med.* 2015;15(1):58. doi: <https://doi.org/10.1186/s12890-015-0050-y>
2. Boutou AK, Karrar S, Hopkinson NS, Polkey MI. Anemia and survival in chronic obstructive pulmonary disease: a dichotomous rather than a continuous predictor. *Respiration.* 2013;85(2):126-131. doi: <https://doi.org/10.1159/000338792>
3. Martínez-Rivera C, Portillo K, Muñoz-Ferrer A, et al. Anemia is a mortality predictor in hospitalized patients for COPD exacerbation. *COPD.* 2012;9(3):243-250. doi: <https://doi.org/10.3109/15412555.2011.647131>
4. Barba R, Garcia de Casasola G, Marco J, et al. Anemia in chronic obstructive pulmonary disease: a readmission prognosis factor. *Curr Med Res Opin.* 2012;28(4):617-622. doi: <https://doi.org/10.1185/03007995.2012.675318>
5. Putcha N, Fawzy A, Paul GG, et al. Anemia and adverse outcomes in a chronic obstructive pulmonary disease population with a high burden of comorbidities. an analysis from SPIROMICS. *Ann Am Thorac Soc.* 2018;15(6):710-717. doi: <https://doi.org/10.1513/AnnalsATS.201708-687OC>
6. Epstein AA. A contribution to the study of the chemistry of blood serum. *J Exp Med.* 1912;16(6):719-731. doi: <https://doi.org/10.1084/jem.16.6.719>
7. Weber FP. The prognostic significance of secondary polycythaemia in cardio-pulmonary cases. *Proc R Soc Med.* 1913;6(Med Sect):83-98. doi: <https://doi.org/10.1177/003591571300600707>
8. Chambellan A, Chailleux E, Similowski T. Prognostic value of the hematocrit in patients with severe COPD receiving long-term oxygen therapy. *Chest.* 2005;128(3):1201-1208. doi: <https://doi.org/10.1378/chest.128.3.1201>
9. Kollert F, Tippelt A, Müller C, et al. Hemoglobin levels above anemia thresholds are maximally predictive for long-term survival in COPD with chronic respiratory failure. *Respir Care.* 2013;58(7):1204-1212. doi: <https://doi.org/10.4187/respcare.01961>
10. Cote C, Zilberberg MD, Mody SH, Dordelly LJ, Celli BA. Haemoglobin level and its clinical impact in a cohort of patients with COPD. *Eur Respir J.* 2007;29(5):923-929. doi: <https://doi.org/10.1183/09031936.00137106>
11. Renzetti AD, McClement JH, Litt BD. The Veterans Administration cooperative study of pulmonary function. III. Mortality in relation to respiratory function in chronic obstructive pulmonary disease. *Am J Med.* 1966;41(1):115-129. doi: [https://doi.org/10.1016/0002-9343\(66\)90009-X](https://doi.org/10.1016/0002-9343(66)90009-X)
12. Couper D, LaVange LM, Han M, et al. Design of the subpopulations and intermediate outcomes in COPD study (SPIROMICS). *Thorax.* 2014;69(5):491-494. doi: <https://doi.org/10.1136/thoraxjnl-2013-203897>
13. Adamson JW, Longo DL. Anemia and polycythemia. In: Jameson JL, Fauci AS, Kasper DL, Hauser SL, Longo DL, Loscalzo J, eds. *Harrison's Principles of Internal Medicine.* 20th Ed. McGraw-Hill Education; 2018. Accessed May 13, 2021. <https://accessmedicine.mhmedical.com/content.aspx?bookid=2129§ionid=192014145>
14. Jones PW, Harding G, Berry P, Wiklund I, Chen W-H, Leidy NK. Development and first validation of the COPD Assessment Test. *Eur Respir J.* 2009;34(3):648-654. doi: <https://doi.org/10.1183/09031936.00102509>
15. Bestall J, Paul E, Garrod R, Garnham R, Jones P, Wedzicha J. Usefulness of the medical research council (MRC) dyspnoea scale as a measure of disability in patients with chronic obstructive pulmonary disease. *Thorax.* 1999;54(7):581-586. doi: <https://doi.org/10.1136/thx.54.7.581>
16. Holland AE, Spruit MA, Troosters T, et al. An official European Respiratory Society/American Thoracic Society technical standard: field walking tests in chronic respiratory disease. *Eur Respir J.* 2014;44(6):1428-1446. doi: <https://doi.org/10.1183/09031936.00150314>
17. Jones PW, Quirk FH, Baveystock CM, Littlejohns P. A self-complete measure of health status for chronic airflow limitation. The St. George's Respiratory Questionnaire. *Am Rev Respir Dis.* 1992;145(6):1321-1327. doi: <https://doi.org/10.1164/ajrccm/145.6.1321>
18. Sieren JP, Newell JD, Barr RG, et al. SPIROMICS protocol for multicenter quantitative computed tomography to phenotype the lungs. *Am J Respir Crit Care Med.* 2016;194(7):794-806. doi: <https://doi.org/10.1164/rccm.201506-1208PP>
19. Putcha N, Puhan MA, Drummond MB, et al. A simplified score to quantify comorbidity in COPD. *PLoS One.* 2014;9(12):e114438. doi: <https://doi.org/10.1371/journal.pone.0114438>
20. Fawzy A, Putcha N, Paulin LM, et al. Association of thrombocytosis with COPD morbidity: the SPIROMICS and COPDGene cohorts. *Respir Res.* 2018;19(1):20. doi: <https://doi.org/10.1186/s12931-018-0717-z>
21. Auchincloss JH, Duggan JJ. Effects of venesection on pulmonary and cardiac function in patients with chronic pulmonary emphysema and secondary polycythemia. *Am J Med.* 1957;22(1):74-82. doi: [https://doi.org/10.1016/0002-9343\(57\)90338-8](https://doi.org/10.1016/0002-9343(57)90338-8)
22. Rakita L, Gillespie DG, Sancetta SM. The acute and chronic effects of phlebotomy on general hemodynamics and pulmonary functions of patients with secondary polycythemia associated with pulmonary emphysema. *Am Heart J.* 1965;70(4):466-474. doi: [https://doi.org/10.1016/0002-8703\(65\)90358-3](https://doi.org/10.1016/0002-8703(65)90358-3)

-
23. Hoesein FAAM, van Rikxoort E, van Ginneken B, et al. Computed tomography-quantified emphysema distribution is associated with lung function decline. *Eur Respir J*. 2012;40(4):844-850. doi: <https://doi.org/10.1183/09031936.00186311>
-
24. Mair G, Miller JJ, McAllister D, et al. Computed tomographic emphysema distribution: relationship to clinical features in a cohort of smokers. *Eur Respir J*. 2009;33(3):536-542. doi: <https://doi.org/10.1183/09031936.00111808>
-
25. Nguyen CD, Holty J-EC. Does untreated obstructive sleep apnea cause secondary erythrocytosis? *Respir Med*. 2017;130:27-34. doi: <https://doi.org/10.1016/j.rmed.2017.07.003>
-
26. Rizzi M, Airoidi A, Cristiano A, et al. Oxygen therapy in COPD patients with isolated nocturnal hypoxemia; comparison of quality of life and sleep between bronchitis and emphysema phenotype: a prospective observational study. *Eur J Intern Med*. 2016;34:78-84. doi: <https://doi.org/10.1016/j.ejim.2016.08.035>
-
27. Kim V, Benditt JO, Wise RA, Sharafkhaneh A. Oxygen therapy in chronic obstructive pulmonary disease. *Proc Am Thorac Soc*. 2008;5(4):513-518. doi: <https://doi.org/10.1513/pats.200708-124ET>
-
28. Thakur N, Blanc PD, Julian LJ, et al. COPD and cognitive impairment: the role of hypoxemia and oxygen therapy. *Int J Chron Obstruct Pulmon Dis*. 2010;5:263-269. doi: <https://doi.org/10.2147/COPD.S10684>