

# UCLA

## UCLA Previously Published Works

### Title

Characteristics and outcomes of patients with COVID-19 with and without prevalent hypertension: a multinational cohort study

### Permalink

<https://escholarship.org/uc/item/9cm1098t>

### Journal

BMJ Open, 11(12)

### ISSN

2044-6055

### Authors

Reyes, Carlen

Pistillo, Andrea

Fernández-Bertolín, Sergio

et al.

### Publication Date

2021-12-01

### DOI

10.1136/bmjopen-2021-057632

### Copyright Information

This work is made available under the terms of a Creative Commons Attribution License, available at <https://creativecommons.org/licenses/by/4.0/>

Peer reviewed

# BMJ Open Characteristics and outcomes of patients with COVID-19 with and without prevalent hypertension: a multinational cohort study

Carlen Reyes <sup>1</sup>, Andrea Pistillo<sup>1</sup>, Sergio Fernández-Bertolín<sup>1</sup>, Martina Recalde<sup>1,2</sup>, Elena Roel<sup>1,2</sup>, Diana Puente<sup>1,2</sup>, Anthony G Sena<sup>3,4</sup>, Clair Blacketer<sup>3,4</sup>, Lana Lai<sup>5</sup>, Thamir M Alshammari<sup>6</sup>, Waheed-UI-Rahman Ahmed<sup>7,8</sup>, Osaid Alser <sup>9</sup>, Heba Alghoul <sup>10</sup>, Carlos Areia <sup>11</sup>, Dalia Dawoud<sup>12,13</sup>, Albert Prats-Urbe <sup>14</sup>, Neus Valveny<sup>15</sup>, Gabriel de Maeztu<sup>16</sup>, Luisa Sorlí Redó<sup>2,17,18</sup>, Jordi Martínez Roldan<sup>19</sup>, Inmaculada Lopez Montesinos<sup>17</sup>, Lisa M Schilling<sup>20</sup>, Asieh Golozar<sup>21,22</sup>, Christian Reich<sup>23</sup>, Jose D Posada<sup>24</sup>, Nigam Shah<sup>24</sup>, Seng Chan You<sup>25</sup>, Kristine E Lynch<sup>26,27</sup>, Scott L DuVall<sup>26,27</sup>, Michael E Matheny<sup>26,27</sup>, Fredrik Nyberg<sup>28</sup>, Anna Ostropolets<sup>29</sup>, George Hripcsak<sup>29,30</sup>, Peter R Rijnbeek <sup>4</sup>, Marc A Suchard<sup>31</sup>, Patrick Ryan<sup>3,29</sup>, Kristin Kostka <sup>23,32</sup>, Talita Duarte-Salles <sup>1</sup>

**To cite:** Reyes C, Pistillo A, Fernández-Bertolín S, *et al*. Characteristics and outcomes of patients with COVID-19 with and without prevalent hypertension: a multinational cohort study. *BMJ Open* 2021;**11**:e057632. doi:10.1136/bmjopen-2021-057632

► Prepublication history and additional supplemental material for this paper are available online. To view these files, please visit the journal online (<http://dx.doi.org/10.1136/bmjopen-2021-057632>).

Received 29 September 2021  
Accepted 09 November 2021



© Author(s) (or their employer(s)) 2021. Re-use permitted under CC BY. Published by BMJ.

For numbered affiliations see end of article.

## Correspondence to

Dr Talita Duarte-Salles; [tduarte@idiapjgol.org](mailto:tduarte@idiapjgol.org)

## ABSTRACT

**Objective** To characterise patients with and without prevalent hypertension and COVID-19 and to assess adverse outcomes in both inpatients and outpatients.

**Design and setting** This is a retrospective cohort study using 15 healthcare databases (primary and secondary electronic healthcare records, insurance and national claims data) from the USA, Europe and South Korea, standardised to the Observational Medical Outcomes Partnership common data model. Data were gathered from 1 March to 31 October 2020.

**Participants** Two non-mutually exclusive cohorts were defined: (1) individuals diagnosed with COVID-19 (diagnosed cohort) and (2) individuals hospitalised with COVID-19 (hospitalised cohort), and stratified by hypertension status. Follow-up was from COVID-19 diagnosis/hospitalisation to death, end of the study period or 30 days.

**Outcomes** Demographics, comorbidities and 30-day outcomes (hospitalisation and death for the 'diagnosed' cohort and adverse events and death for the 'hospitalised' cohort) were reported.

**Results** We identified 2 851 035 diagnosed and 563 708 hospitalised patients with COVID-19. Hypertension was more prevalent in the latter (ranging across databases from 17.4% (95% CI 17.2 to 17.6) to 61.4% (95% CI 61.0 to 61.8) and from 25.6% (95% CI 24.6 to 26.6) to 85.9% (95% CI 85.2 to 86.6)). Patients in both cohorts with hypertension were predominantly >50 years old and female. Patients with hypertension were frequently diagnosed with obesity, heart disease, dyslipidaemia and diabetes. Compared with patients without hypertension, patients with hypertension in the COVID-19 diagnosed cohort had more hospitalisations (ranging from 1.3% (95% CI 0.4 to 2.2) to 41.1% (95% CI 39.5 to 42.7) vs from 1.4% (95% CI 0.9 to 1.9) to 15.9% (95% CI 14.9

## Strengths and limitations of this study

- This study is unique in its approach to characterising COVID-19 cases across an international network of healthcare databases, with diverse healthcare systems and policies, through a comprehensive federated approach.
- This study was carried out using routinely collected clinical practice data, which confer greater external validity, but also imply a risk of misclassification.
- This study was intentionally descriptive and was deliberately not designed for causal inference.
- The diagnosed and/or hospitalised cohorts were non-mutually exclusive.
- The data that underpinned this study mostly came from the initial months of the COVID-19 pandemic and may not be representative of the COVID-19 cases diagnosed and/or hospitalised in the subsequent periods.

to 16.9)) and increased mortality (ranging from 0.3% (95% CI 0.1 to 0.5) to 18.5% (95% CI 15.7 to 21.3) vs from 0.2% (95% CI 0.2 to 0.2) to 11.8% (95% CI 10.8 to 12.8)). Patients in the COVID-19 hospitalised cohort with hypertension were more likely to have acute respiratory distress syndrome (ranging from 0.1% (95% CI 0.0 to 0.2) to 65.6% (95% CI 62.5 to 68.7) vs from 0.1% (95% CI 0.0 to 0.2) to 54.7% (95% CI 50.5 to 58.9)), arrhythmia (ranging from 0.5% (95% CI 0.3 to 0.7) to 45.8% (95% CI 42.6 to 49.0) vs from 0.4% (95% CI 0.3 to 0.5) to 36.8% (95% CI 32.7 to 40.9)) and increased mortality (ranging from 1.8% (95% CI 0.4 to 3.2) to 25.1% (95% CI 23.0 to 27.2) vs from 0.7% (95% CI 0.5 to 0.9) to 10.9% (95% CI 10.4 to 11.4)) than patients without hypertension.

**Conclusions** COVID-19 patients with hypertension were more likely to suffer severe outcomes, hospitalisations and deaths compared with those without hypertension.

## INTRODUCTION

As of September 2021, the ongoing COVID-19 pandemic has affected over 220 million people, with an estimated death toll that has surpassed 4.5 million deaths worldwide.<sup>1</sup> Hypertension is a common chronic condition that may increase the risk of hospitalisations and adverse outcomes.<sup>2</sup> A higher prevalence of hypertension has been found among patients with COVID-19 compared with the general population, which has attracted the attention of researchers.<sup>3</sup> The characterisation of this population at risk is key to be able to design effective preventive strategies that could improve patient outcomes and reduce pressure on healthcare systems.

To date, observational studies,<sup>4–16</sup> systematic reviews and meta-analyses have reported an increased risk of progression to severe COVID-19 and increased mortality in patients with hypertension.<sup>17–21</sup> However, these studies either only included hospitalised patients,<sup>4–13 15 16</sup> leading to selection bias, or had a small sample size,<sup>6–10 15</sup> both of which limit extrapolation of results.

Most patients with confirmed SARS-CoV-2 infection experience mild or moderate symptoms (80%)<sup>22</sup> and are predominantly seen as outpatients; therefore, a large characterisation study including both inpatients and outpatients is needed.

This study aims to describe and compare the demographics, baseline comorbidities and 30-day outcomes of individuals with COVID-19 with and without pre-existing hypertension in both inpatients and outpatients.

## MATERIALS AND METHODS

### Study design, setting and data sources

A multinational, multidatabase cohort study was conducted using data from 1 March to 31 October 2020 included in ‘The Characterizing Health Associated Risks and Your Baseline Disease In SARS-COV-2’ (CHARYBDIS<sup>23</sup>) study. This is a large-scale multinational cohort study aimed to characterise health-associated risks and baseline diseases in SARS-CoV-2 patients using routinely collected primary care and hospital electronic health records (EHR), hospital billing and insurance claims data from the USA, Europe (the Netherlands, Spain, UK, Germany and France) and Asia (South Korea and China).

From the databases contributing to CHARYBDIS, only 20 had available information on pre-existing hypertension and were initially selected. To be included in the study, the databases had to (1) have at least 140 subjects with prevalent hypertension diagnosed with COVID-19 (necessary to estimate the prevalence of previous conditions or 30-day outcomes with sufficient precision; CI width of  $\pm 5\%$ ) and (2) have at least 1 year of previous

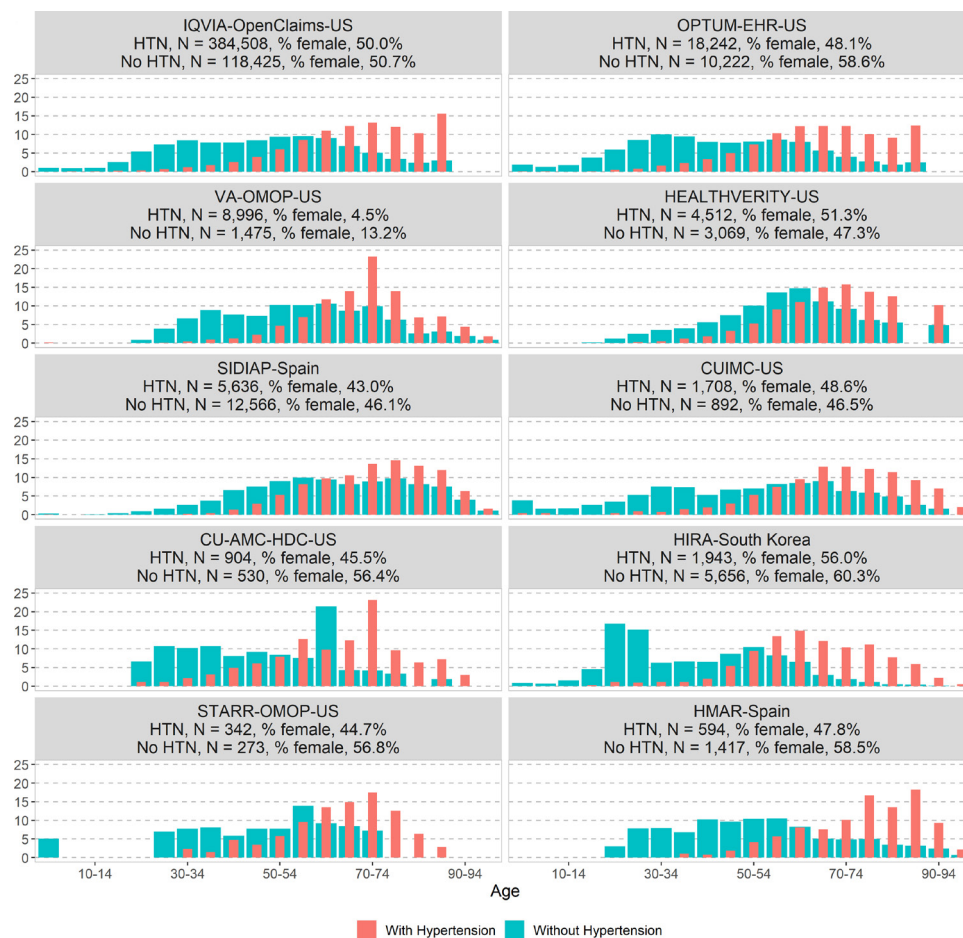
data before the date of COVID-19 diagnosis or hospitalisation. Data results for this paper were extracted on 21 January 2021.<sup>23</sup> Fifteen databases complied with the aforementioned inclusion criteria. Of these, five had data for outpatients: IQVIA-Longitudinal Patients Database ‘LPD’ (France), IQVIA-Longitudinal Patients Database ‘LPD’ (Italy), IQVIA-Disease Analyser ‘DA’ (Germany), Clinical Practice Research Datalink ‘CPRD’ (UK) and Integrated Primary Care Information ‘IPCI’ (the Netherlands); two had data for inpatients: Health Insurance Review and Assessment Service ‘HIRA’ (South Korea) and Hospital del Mar ‘HMAR’ (Spain); and eight had both inpatient and outpatient data: IQVIA-OpenClaims, HealthVerity, Information System for Research in Primary Care ‘SIDIAP’ (Spain<sup>24</sup>), Optum de-identified Electronic Health Record Dataset ‘OPTUM-HER’ (USA), United States Department of Veterans Affairs (VA-OMOP), Columbia University Irving Medical Center ‘CUIMC’ (USA), University of Colorado Anschutz Medical Campus Health Data Compass ‘CU-AMC-HDC’, and Stanford Medicine Research Data Repository ‘STARR-OMOP’ (USA<sup>25</sup>). A more detailed description of the included data sources is available in online supplemental figure 1 and table 1.

### Study participants and follow-up

Two non-mutually exclusive cohorts were defined: (1) individual diagnosed with COVID-19 (COVID-19 diagnosed) and (2) individuals hospitalised with COVID-19 (COVID-19 hospitalised). The COVID-19 diagnosed cohort included individuals with a COVID-19 clinical diagnosis and/or a SARS-CoV-2 positive test. The COVID-19 hospitalised cohort included patients hospitalised with a COVID-19 clinical diagnosis or positive test 21 days before admission up to the end of their hospitalisation. The codes used to identify COVID-19 cases are described in more detail in online supplemental table 2. The index date (ie, cohort start date) was the date of COVID-19 diagnosis or positive test (whichever occurred first) for the diagnosed cohort and the date of hospitalisation for the hospitalised cohort. Cohort participants were followed from the index date to the earliest of death, end of the observation period or 30 days after.

### Baseline characteristics and outcomes of interest

Hypertension diagnosis as well as participants’ sex and age were gathered at the index date and identified comorbidities in the year before the index date. Hypertension diagnosis and comorbidities (asthma, cancer, chronic kidney and liver disease, chronic obstructive pulmonary disease, dementia, heart disease, hyperlipidaemia, peripheral vascular disease, type 2 diabetes mellitus, obesity) were ascertained based on the Systematized Nomenclature of Medicine Current Terminology hierarchy, with all descendant codes included. We selected and included comorbidities based on their prevalence in the cohorts of the participating sites



**Figure 1** Comparison of age and sex distribution in patients with a COVID-19 diagnosis with and without hypertension in the CHARYBDIS network, %. CHARYBDIS, Characterizing Health Associated Risks and Your Baseline Disease In SARS-COV-2; CUIMC, Columbia University Irving Medical Center; HIRA, Health Insurance Review and Assessment Service; HMAR, Hospital del Mar; HTN, hypertension; OMOP, Observational Medical Outcomes Partnership; OPTUM-EHR, Optum de-identified Electronic Health Record Dataset; SIDIAP, Information System for Research in Primary Care; STARR-OMOP, STAnford Medicine Research Data Repository; VA-OMOP, United States Department of Veterans Affairs; CU-AMC-HDC, University of Colorado Anschutz Medical Campus Health Data Compass

and their clinical relevance to the COVID-19 research field.<sup>17–21</sup> Clinical epidemiologists generated a list of codes for the identification of prior medical conditions and outcomes of interest using a web-based integrated platform (ATLAS tool; <https://atlas.ohdsi.org/>). The definition of the variables can be found in online supplemental table 3.

Our main 30-day outcomes of interest were hospitalisation and death for the COVID-19 diagnosed cohort, and requirement for intensive services (identified as any record of mechanical ventilation and/or tracheostomy and/or extracorporeal membrane oxygenation procedure), acute respiratory distress syndrome (ARDS), arrhythmia, total cardiovascular events (ischaemic stroke, haemorrhagic stroke, heart failure (heart failure during hospitalisation for the hospitalised cohort), acute myocardial infarction or sudden cardiac death), sepsis, venous thromboembolism and death for the COVID-19 hospitalised cohort.

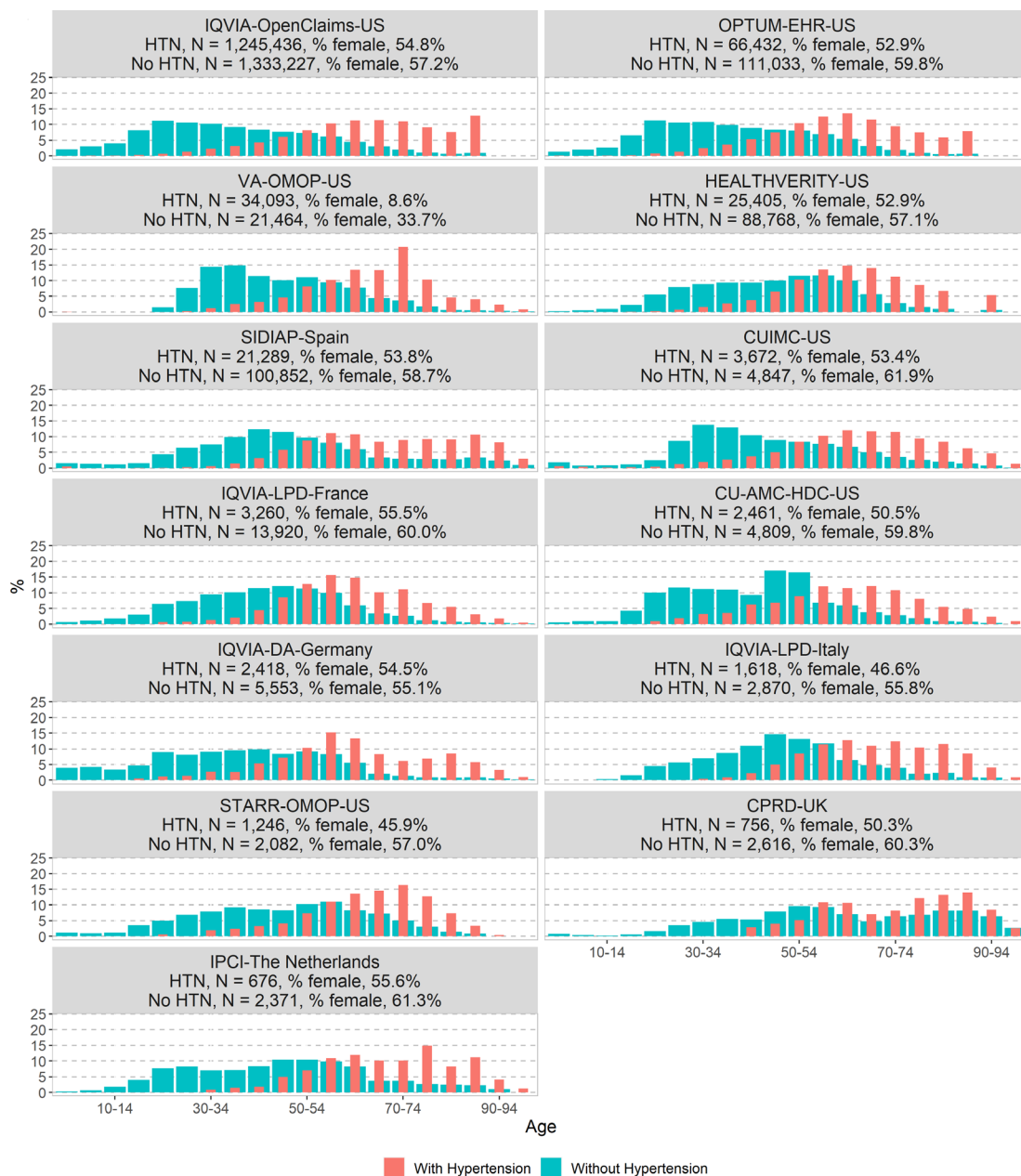
### Statistical analyses

All data were standardised to the Observational Medical Outcomes Partnership common data model.<sup>26</sup> A common analytical code for the CHARYBDIS study was developed for the Observational Health Data Sciences and Informatics Methods Library, which was run locally in each database. Only aggregate results from each database were publicly shared. The CHARYBDIS protocol and source code can be found at <https://github.com/ohdsi-studies/Covid19CharacterizationCharybdis>.

Demographics (sex and age categorised in 5-year age bands), comorbidities and 30-day incidence rates of outcomes were reported as proportion along with 95% CI. A minimum of five individuals was established to minimise the risk of identification of patients.

All results are reported by cohort, database and hypertension status (with or without hypertension).

This is a descriptive study and no causal inference is intended. Multivariable regression or adjustment for confounding was therefore considered out of remit and



**Figure 2** Comparison of age and sex distribution in patients with a COVID-19 hospitalisation with and without hypertension in the CHARYBDIS network, %. CHARYBDIS, Characterizing Health Associated Risks and Your Baseline Disease In SARS-COV-2; CPRD, Clinical Practice Research Datalink; CUIMC, Columbia University Irving Medical Center; DA, Disease Analyser; HTN, hypertension; IPCI, Integrated Primary Care Information; LPD, Longitudinal Patients Database; OMOP, Observational Medical Outcomes Partnership; OPTUM-EHR, Optum de-identified Electronic Health Record Dataset; SIDIAP, Information System for Research in Primary Care; STARR-OMOP, STANford Medicine Research Data Repository; VA-OMOP, United States Department of Veterans Affairs; CU-AMC-HDC, University of Colorado Anschutz Medical Campus Health Data Compass.

not included in our study. We used R V.4.0.3 for data visualisation. All data partners consented to the external sharing of the result set on data.ohdsi.org. Consent to participate was not required as only anonymised retrospective data were used for this study and no patient or general practitioner contact was required.

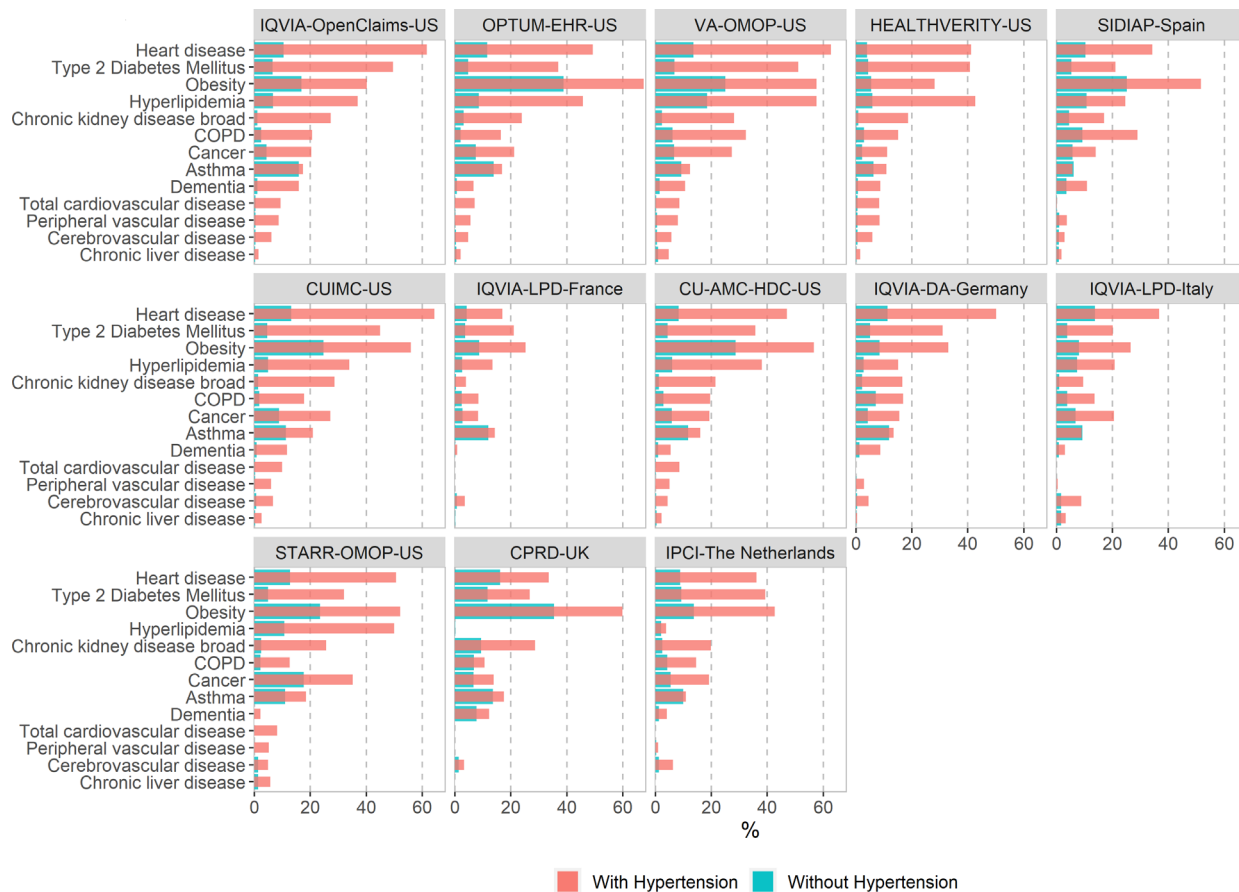
#### Patient and public involvement

No patients were involved.

## RESULTS

### Study population

Overall, 2 851 035 patients diagnosed and 563 708 patients hospitalised with COVID-19 were identified in 15 databases from 8 countries (USA, South Korea, Germany, the Netherlands, France, Italy, Spain and UK). In total, 1 408 762 and 427 385 patients diagnosed and hospitalised with COVID-19, respectively, had a prior diagnosis of hypertension (online supplemental



**Figure 3** Comorbidities at baseline among patients with a COVID-19 diagnosis with and without hypertension in the CHARYBDIS network, %. CHARYBDIS, Characterizing Health Associated Risks and Your Baseline Disease In SARS-COV-2; COPD, chronic obstructive pulmonary disease; CPRD, Clinical Practice Research Datalink; CUIIMC, Columbia University Irving Medical Center ; DA, Disease Analyser; IPCI, Integrated Primary Care Information; LPD, Longitudinal Patients Database; OMOP, Observational Medical Outcomes Partnership; OPTUM-EHR, Optum de-identified Electronic Health Record Dataset; SIDIAP, Information System for Research in Primary Care; STARR-OMOP, STANford Medicine Research Data Repository; VA-OMOP, United States Department of Veterans Affairs; CU-AMC-HDC, University of Colorado Anschutz Medical Campus Health Data Compass.

table 4). The prevalence of hypertension ranged from 17.4% to 48.3% in the COVID-19 diagnosed cohort and from 25.6% to 85.9% in the COVID-19 hospitalised cohort.

### Baseline characteristics

The age and sex distributions in the COVID-19 diagnosed cohort and in the COVID-19 hospitalised cohort with and without hypertension are presented in figures 1 and 2, respectively. Overall, in both cohorts, patients with hypertension were older than those without (higher proportion of patients aged above 50 across all databases). The proportion of patients diagnosed with COVID-19 and hypertension peaked at a younger age (55–70 years old) compared with those hospitalised (70–80 years old). The proportion of women with hypertension was greater in the diagnosed cohort (8.6%–55.6%) than in the hospitalised cohort (4.5%–56%).

### Baseline comorbidities

Figures 3 and 4 report the proportion of baseline comorbidities of the COVID-19 diagnosed cohort (figure 3) and the COVID-19 hospitalised cohort (figure 4) with and without

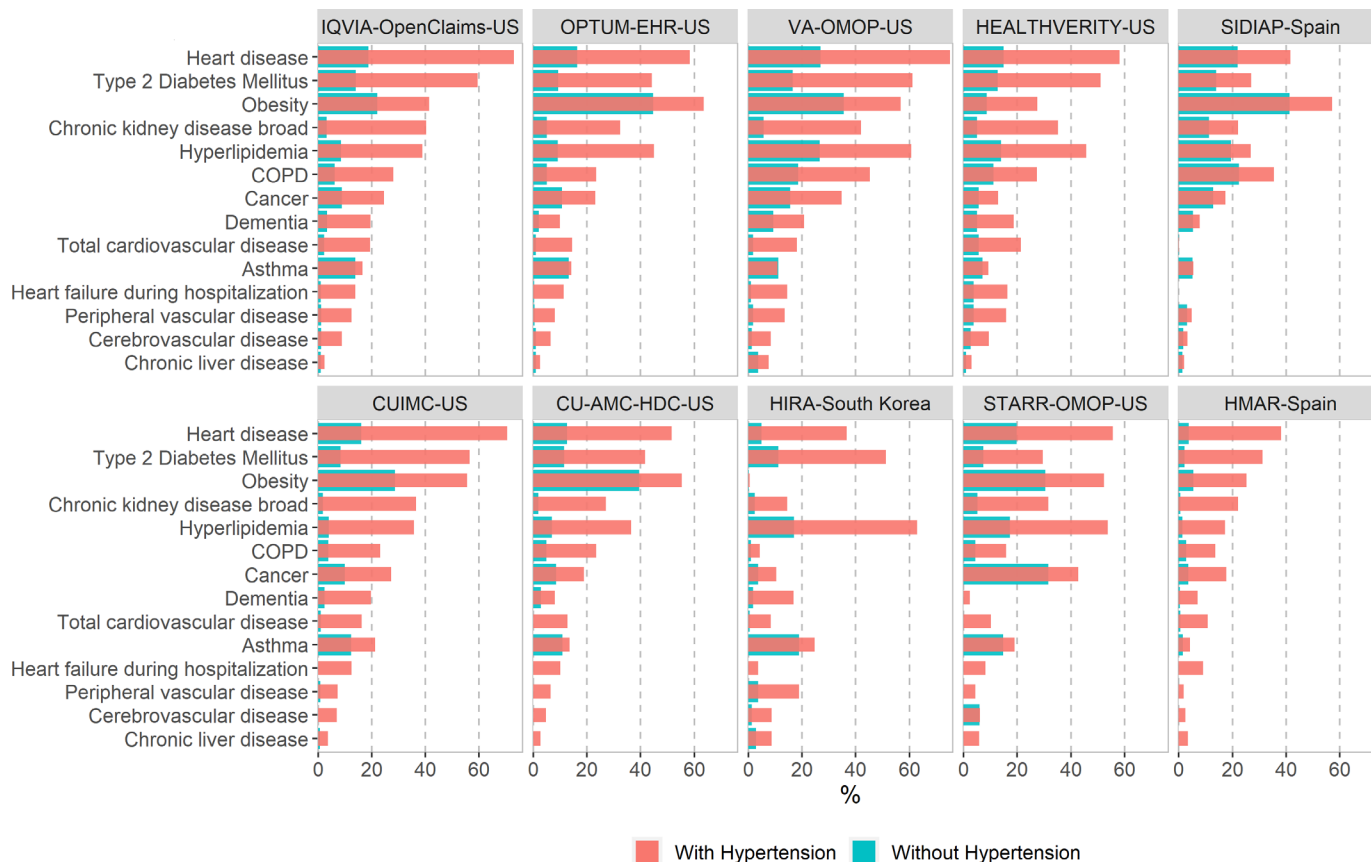
hypertension. Patients with hypertension and COVID-19 diagnosed or hospitalised were frequently diagnosed with obesity, heart disease, dyslipidaemia and type 2 diabetes, the proportion of which more than doubles the ones found among patients with COVID-19 without hypertension.

### 30-day outcomes of interest

The 30-day outcomes in people with and without hypertension in both the COVID-19 diagnosed and/or hospitalised cohorts are reported in tables 1 and 2.

Patients with hypertension diagnosed with COVID-19 were more likely to be hospitalised (range 1.3%–41.1% vs 1.4%–15.9%) and had increased mortality (range 0.3%–18.5% vs 0.2%–11.8%) when compared with those without hypertension (table 1).

Patients with hypertension hospitalised with COVID-19 were more frequently diagnosed with ARDS (range 0.1%–65.6% vs 0.1%–54.7%) and cardiac arrhythmia (range 0.5%–45.8% vs 0.4%–36.8%) and had increased mortality (range 1.8%–25.1% vs 0.7%–10.9%) as compared with those without hypertension (table 2).



**Figure 4** Comorbidities at baseline among patients with a COVID-19 hospitalisation with and without hypertension in the CHARYBDIS network, %. CHARYBDIS, Characterizing Health Associated Risks and Your Baseline Disease In SARS-COV-2; COPD, chronic obstructive pulmonary disease; CUIMC, Columbia University Irving Medical Center; HIRA, Health Insurance Review and Assessment Service; HMAR, Hospital del Mar; OMOP, Observational Medical Outcomes Partnership; OPTUM-EHR, Optum de-identified Electronic Health Record Dataset; SIDIAP, Information System for Research in Primary Care; STARR-OMOP, STAnford Medicine Research Data Repository; VA-OMOP, United States Department of Veterans Affairs; CU-AMC-HDC, University of Colorado Anschutz Medical Campus Health Data Compass.

## DISCUSSION

This large multinational, multidatabase cohort study reports a greater prevalence of hypertension among patients hospitalised with COVID-19 compared with those diagnosed with COVID-19. Patients with hypertension diagnosed and/or hospitalised with COVID-19 were frequently diagnosed with obesity, heart disease, dyslipidaemia and type 2 diabetes at baseline compared with those without hypertension. They were also more likely to experience adverse outcomes including death and hospitalisations (in the COVID-19 diagnosed cohort) and cardiac arrhythmia, ARDS and death (in the COVID-19 hospitalised cohort) than patients without hypertension.

This is the first large multinational study that characterises both inpatients and outpatients with COVID-19 with and without prevalent hypertension. Hypertension was more prevalent in hospitalised patients compared with those diagnosed with COVID-19 (range 25.6%–85.9% vs 17.4%–61.4%, respectively). The observed variability between databases is similar to previous reports, where the prevalence ranged from 28.8%<sup>7</sup> to 60%.<sup>15</sup>

However, these results should be put into context given that our highest rate (in both COVID-19 diagnosed and

COVID-19 hospitalised) was observed in the VA-OMOP database from the US Department of Veterans Affairs (mostly men of older age).

As in the general population with hypertension,<sup>27</sup> patients with hypertension diagnosed with COVID-19 in this study were more frequently diagnosed with heart disease or type 2 diabetes at baseline than individuals without hypertension. These results are similar to what has been previously published, where patients with hypertension and COVID-19 also reported a higher prevalence of diabetes mellitus,<sup>6 8 12</sup> cardiovascular diseases (other than hypertension)<sup>8 12</sup> and chronic kidney disease<sup>8</sup> compared with those without hypertension. This study further expands these previous findings identifying these same comorbidities in the outpatients diagnosed with COVID-19 and adds obesity and dyslipidaemia to the list of conditions more frequently found among patients with COVID-19 and hypertension compared with those without hypertension. The higher prevalence of comorbid conditions found in this study among patients with hypertension hospitalised with COVID-19 compared with patients with hypertension diagnosed with COVID-19 suggests a poorer baseline health status.

**Table 1** Comparison of 30-day outcomes of interest between patients with COVID-19 with and without hypertension in the COVID-19 diagnosed cohorts in the CHARYBDIS network

Database	Hypertension	n	30-day outcomes, % (95% CI)	
			Death	Hospitalisation
IQVIA-OpenClaims (USA)	With	1 245 436	–	29.6 (29.5 to 29.7)
	Without	1 333 227	–	8.9 (8.9 to 8.9)
OPTUM-HER (USA)	With	66 432	1.7 (1.6 to 1.8)	26.4 (26.1 to 26.7)
	Without	111 033	0.2 (0.2 to 0.2)	9.2 (9.0 to 9.4)
VA-OMOP (USA)	With	34 093	5.4 (5.2 to 5.6)	23.4 (23.0 to 23.8)
	Without	21 464	0.7 (0.6 to 0.8)	6.1 (5.8 to 6.4)
HealthVerity (USA)	With	25 405	–	14.6 (14.2 to 15.0)
	Without	88 768	–	3.1 (3.0 to 3.2)
SIDIAP (Spain)	With	21 289	9.8 (9.4 to 10.2)	22.8 (22.2 to 23.4)
	Without	100 852	3.3 (3.2 to 3.4)	11.2 (11.0 to 11.4)
CUIMC (USA)	With	3672	11.8 (10.8 to 12.8)	41.1 (39.5 to 42.7)
	Without	4847	2.0 (1.6 to 2.4)	15.9 (14.9 to 16.9)
CU-AMC-HDC (USA)	With	2461	5.9 (5.0 to 6.8)	35.8 (33.9 to 37.7)
	Without	4809	0.7 (0.5 to 0.9)	11.2 (10.3 to 12.1)
IQVIA-DA (Germany)	With	2418	0.3 (0.1 to 0.5)	–
	Without	5553	–	–
STARR-OMOP (USA)	With	1246	0.6 (0.2 to 1.0)	24.6 (22.2 to 27.0)
	Without	2082	–	14.0 (12.5 to 15.5)
CPRD (UK)	With	756	18.5 (15.7 to 21.3)	–
	Without	2616	11.8 (10.6 to 13.0)	–
IPCI (The Netherlands)	With	676	13.6 (11.0 to 16.2)	1.3 (0.4 to 2.2)
	Without	2371	3.1 (2.4 to 3.8)	1.4 (0.9 to 1.9)

‘–’ means information is not available or <5 cases for all databases except for CU-AMC HDC, where information is not available for <10 cases. CHARYBDIS, Characterizing Health Associated Risks and Your Baseline Disease In SARS-COV-2; CPRD, Clinical Practice Research Datalink; CU-AMC-HDC, University of Colorado Anschutz Medical Campus Health Data Compass; CUIMC, Columbia University Irving Medical Center; DA, Disease Analyser; IPCI, Integrated Primary Care Information; OMOP, Observational Medical Outcomes Partnership; OPTUM-HER, Optum de-identified Electronic Health Record Dataset; SIDIAP, Information System for Research in Primary Care; STARR, STAnford Medicine Research Data Repository; VA-OMOP, United States Department of Veterans Affairs.

Patients with hypertension hospitalised with COVID-19 were more likely to have worse disease progression with higher rates of ARDS (prevalence per cent change (PC) between patients with and without hypertension ranging from  $-1.8\%$  to  $18.2\%$ ), more cardiac arrhythmias (PC ranging from  $0.1\%$  to  $20.5\%$ ) and increased mortality (PC ranging from  $3.5\%$  to  $14.9\%$ ). Previous studies have documented poorer clinical outcomes in patients with hypertension hospitalised with COVID-19 (including ARDS),<sup>8 12 14 19</sup> the need for mechanical ventilation, admission to intensive care units<sup>6 13 19</sup> or an increased mortality.<sup>4 7 11–13 19</sup> This study further showed that patients with hypertension diagnosed with COVID-19 were more likely to experience hospitalisations (PC between patients with and without hypertension ranging from  $-0.1\%$  to  $25.6\%$ ) and deaths (PC from  $1.5\%$  to  $10.5\%$ ).

These results highlight the importance of considering hypertension as a possible risk factor in the overall population diagnosed and not only in those hospitalised with COVID-19. It also adds to the current literature cardiac arrhythmia and cardiovascular diseases (other

than hypertension) to the list of adverse outcomes more frequently diagnosed among patients with hypertension hospitalised with COVID-19 compared with those without hypertension.

This study has several strengths. This is the largest cohort study on individuals with hypertension who were diagnosed and/or hospitalised with COVID-19 to date. It provides novel insight into the characterisation of patients diagnosed with COVID-19 and confers greater external validity of its results compared with what has been published up to date (only hospitalised patients). It is also unique in its approach to characterising COVID-19 cases across an international network of healthcare databases, with diverse healthcare systems and policies, through a comprehensive federated approach, allowing analysis of 15 databases without sharing patient identifiable data, hence respecting patients' confidentiality at all times.

We recognise there are limitations to our approach. First, this study was intentionally descriptive and was deliberately not designed for causal inference. The



**Table 2** Comparison of 30-day outcomes of interest between patients with COVID-19 with and without hypertension in the COVID-19 hospitalised cohorts in the CHARYBDIS network

Database	Hypertension	n	30-day outcomes, % (95% CI)						
			VTE*	Death	Cardiac arrhythmia	Sepsis	ARDS	Intensive services	Total CVET
IQVIA-OpenClaims (USA)	With	384508	3.9 (3.8 to 4.0)	–	15.4 (15.3 to 15.5)	18.3 (18.2 to 18.4)	34.8 (34.6 to 35.0)	9.1 (9.0 to 9.2)	11.3 (11.2 to 11.4)
	Without	118425	3.8 (3.7 to 3.9)	–	7.2 (7.1 to 7.3)	15.5 (15.3 to 15.7)	31.3 (31.0 to 31.6)	6.4 (6.3 to 6.5)	4.5 (4.4 to 4.6)
OPTUM-HER (USA)	With	18242	6.2 (5.9 to 6.5)	5.1 (4.8 to 5.4)	31.6 (30.9 to 32.3)	24.8 (24.2 to 25.4)	45.7 (45.0 to 46.4)	14.0 (13.5 to 14.5)	18.2 (17.6 to 18.8)
	Without	10222	4.4 (4.0 to 4.8)	1.6 (1.4 to 1.8)	11.1 (10.5 to 11.7)	15.0 (14.3 to 15.7)	27.5 (26.6 to 28.4)	6.3 (5.8 to 6.8)	4.8 (4.4 to 5.2)
VA-OMOP (USA)	With	8996	7.3 (6.8 to 7.8)	15.4 (14.7 to 16.1)	33.9 (32.9 to 34.9)	20.0 (19.2 to 20.8)	43.9 (42.9 to 44.9)	17.1 (16.3 to 17.9)	21.0 (20.2 to 21.8)
	Without	1475	6.9 (5.6 to 8.2)	7.6 (6.2 to 9.0)	16.8 (14.9 to 18.7)	16.2 (14.3 to 18.1)	39.6 (37.1 to 42.1)	11.2 (9.6 to 12.8)	7.3 (6.0 to 8.6)
HealthVerity (USA)	With	4512	3.6 (3.1 to 4.1)	–	14.8 (13.8 to 15.8)	16.5 (15.4 to 17.6)	26.7 (25.4 to 28.0)	6.1 (5.4 to 6.8)	11.9 (11.0 to 12.8)
	Without	3069	3.9 (3.2 to 4.6)	–	6.8 (5.9 to 7.7)	12.5 (11.3 to 13.7)	23.9 (22.4 to 25.4)	4.9 (4.1 to 5.7)	5.6 (4.8 to 6.4)
SIDIAP (Spain)	With	5636	1.0 (0.7 to 1.3)	15.4 (14.5 to 16.3)	0.5 (0.3 to 0.7)	–	0.1 (0.0 to 0.2)	–	0.9 (0.7 to 1.1)
	Without	12566	1.1 (0.9 to 1.3)	10.9 (10.4 to 11.4)	0.4 (0.3 to 0.5)	0.0 (0.0 to 0.0)	0.1 (0.0 to 0.2)	–	0.5 (0.4 to 0.6)
CJIMC (USA)	With	1708	3.9 (3.0 to 4.8)	25.1 (23.0 to 27.2)	12.1 (10.6 to 13.6)	6.1 (5.0 to 7.2)	16.0 (14.3 to 17.7)	2.2 (1.5 to 2.9)	8.1 (6.8 to 9.4)
	Without	892	3.6 (2.4 to 4.8)	10.2 (8.2 to 12.2)	4.7 (3.3 to 6.1)	5.3 (3.8 to 6.8)	17.8 (15.3 to 20.3)	1.8 (0.9 to 2.7)	3.8 (2.5 to 5.1)
CU-AMC HDC (USA)	With	904	11.4 (9.3 to 13.5)	14.9 (12.6 to 17.2)	45.8 (42.6 to 49.0)	34.2 (31.1 to 37.3)	65.6 (62.5 to 68.7)	28.3 (25.4 to 31.2)	19.8 (17.2 to 22.4)
	Without	530	6.0 (4.0 to 8.0)	6.0 (4.0 to 8.0)	36.8 (32.7 to 40.9)	27.4 (23.6 to 31.2)	54.7 (50.5 to 58.9)	15.5 (12.4 to 18.6)	5.7 (3.7 to 7.7)
HIRA (South Korea)	With	1943	0.7 (0.3 to 1.1)	7.7 (6.5 to 8.9)	4.4 (3.5 to 5.3)	5.3 (4.3 to 6.3)	2.6 (1.9 to 3.3)	4.9 (3.9 to 5.9)	10.0 (8.7 to 11.3)
	Without	5656	NC	0.7 (0.5 to 0.9)	0.7 (0.5 to 0.9)	3.1 (2.6 to 3.6)	0.5 (0.3 to 0.7)	0.6 (0.4 to 0.8)	4.7 (4.1 to 5.3)
STARR-OMOP (USA)	With	342	2.0 (0.5 to 3.5)	1.8 (0.4 to 3.2)	22.2 (17.8 to 26.6)	9.9 (6.7 to 13.1)	12.6 (9.1 to 16.1)	9.1 (6.1 to 12.1)	16.4 (12.5 to 20.3)
	Without	273	NC	–	6.6 (3.7 to 9.5)	7.0 (4.0 to 10.0)	11.4 (7.6 to 15.2)	5.5 (2.8 to 8.2)	–
HIMAR (Spain)	With	594	3.2 (1.8 to 4.6)	14.3 (11.5 to 17.1)	23.1 (19.7 to 26.5)	1.9 (0.8 to 3.0)	12.6 (9.9 to 15.3)	13.5 (10.8 to 16.2)	12.1 (9.5 to 14.7)
	Without	1417	2.6 (1.8 to 3.4)	3.9 (2.9 to 4.9)	6.6 (5.3 to 7.9)	0.7 (0.3 to 1.1)	7.3 (5.9 to 8.7)	6.6 (5.3 to 7.9)	2.2 (1.4 to 3.0)

‘–’ means information is not available or <5 cases for all databases except for CU-AMC HDC, where information is not available for <10 cases.

\*VTE means information is not available or <5 cases for all databases except for CU-AMC HDC, where information is not available for <10 cases.

†Cardiovascular disease events (ischaemic stroke, haemorrhagic stroke, heart failure (heart failure during hospitalisation for the hospitalised cohort), acute myocardial infarction or sudden cardiac death).

ARDS, acute respiratory distress syndrome; CHARYBDIS, Characterizing Health Associated Risks and Your Baseline Disease in SARS-COV-2; CU-AMC-HDC, University of Colorado Anschutz Medical Campus Health Data Compass; CJIMC, Columbia University Irving Medical Center; HIRA, Health Insurance Review and Assessment Service; HIMAR, Hospital del Mar; OMOP, Observational Medical Outcomes Partnership; OPTUM-HER, Optum de-identified Electronic Health Record Dataset; SIDIAP, Information System for Research in Primary Care; STARR, Stanford Medicine Research Data Repository; VA-OMOP, United States Department of Veterans Affairs.

observed differences between groups (eg, with vs without hypertension) should therefore not be interpreted as causal effects. Our patients were analysed depending on whether they were diagnosed and/or hospitalised with COVID-19 according to database registration procedures; however, variations could have occurred during the processes by which patients were screened, tested, admitted and registered across time and the databases. Additionally, the diagnosed and/or hospitalised cohorts were non-mutually exclusive and therefore could be patients in the diagnosed cohort who were also hospitalised and vice versa.

This study was carried out using data recorded in routine clinical practice based on EHRs and/or claims; therefore, data could be incomplete or be erroneous, leading to potential misclassification. We have therefore selectively reported database-specific outcomes to minimise the impact of incompleteness. Differential reporting in databases is likely due to different coding practices, different primary-level and secondary-level data availability, as well as variability in disease severity, with milder/less symptomatic cases more likely being only diagnosed and more severe ones hospitalised. Finally, the data that underpinned this study mostly came from the initial months of the COVID-19 pandemic and may not be representative of the COVID-19 cases diagnosed and/or hospitalised in the subsequent periods.

## CONCLUSIONS

Patients with COVID-19 diagnosed with hypertension are more likely to have comorbidities, experience more severe outcomes including hospitalisations and deaths (among outpatients with COVID-19), and experience more ARDS and deaths (among inpatients with COVID-19) compared with patients without hypertension.

### Author affiliations

- <sup>1</sup>Fundació Institut Universitari per a la recerca a l'Atenció Primària de Salut Jordi Gol i Gurina (IDIAPJGol), Barcelona, Spain
- <sup>2</sup>Universitat Autònoma de Barcelona, Barcelona, Spain
- <sup>3</sup>Janssen Research and Development Titusville, Titusville, New Jersey, USA
- <sup>4</sup>Department of Medical Informatics, Erasmus University Medical Center, Rotterdam, The Netherlands
- <sup>5</sup>School of Medical Sciences, The University of Manchester, Manchester, UK
- <sup>6</sup>College of Pharmacy, Riyadh Elm University, Riyadh, Saudi Arabia
- <sup>7</sup>Nuffield Department of Orthopaedics, Rheumatology and Musculoskeletal Sciences, University of Oxford, Botnar Research Center, Oxford, UK
- <sup>8</sup>College of Medicine and Health, University of Exeter, St Luke's Campus, Exeter, UK
- <sup>9</sup>Massachusetts General Hospital, Harvard Medical School, Boston, Massachusetts, USA
- <sup>10</sup>Faculty of Medicine, Islamic University of Gaza, Gaza, Palestine
- <sup>11</sup>Nuffield Department of Clinical Neurosciences, University of Oxford, Oxford, UK
- <sup>12</sup>National Institute for Health and Care Excellence (NICE), London, UK
- <sup>13</sup>Faculty of Pharmacy, Cairo University, Cairo, Egypt
- <sup>14</sup>Center for Statistics in Medicine, NDORMS, University of Oxford, Botnar Research Center, Nuffield Orthopaedic Center, Oxford, UK
- <sup>15</sup>Real-World Evidence, TFS, Barcelona, Spain
- <sup>16</sup>IOMED, Barcelona, Spain
- <sup>17</sup>Department of Infectious Diseases, Hospital del Mar, Institut Hospital del Mar d'Investigació Mèdica (IMIM), Barcelona, Spain
- <sup>18</sup>Universitat Pompeu Fabra, Barcelona, Spain

- <sup>19</sup>Director of Innovation and Digital Transformation, Hospital del Mar, Barcelona, Spain
- <sup>20</sup>University of Colorado - Anschutz Medical Campus, Aurora, Colorado, USA
- <sup>21</sup>Johns Hopkins University Bloomberg School of Public Health, Baltimore, Maryland, USA
- <sup>22</sup>Regeneron Pharmaceuticals, Tarrytown, NY, USA
- <sup>23</sup>Real-World Solutions, IQVIA, Cambridge, Massachusetts, USA
- <sup>24</sup>Stanford University School of Medicine, Stanford, California, USA
- <sup>25</sup>Department of Preventive Medicine, Yonsei University College of Medicine, Seoul, Korea (the Republic of)
- <sup>26</sup>VA Informatics and Computing Infrastructure, VA Salt Lake City Health Care System, Salt Lake City, Utah, USA
- <sup>27</sup>Department of Internal Medicine, The University of Utah School of Medicine, Salt Lake City, Utah, USA
- <sup>28</sup>School of Public Health and Community Medicine, Institute of Medicine, Sahlgrenska Academy, University of Gothenburg, Gothenburg, Sweden
- <sup>29</sup>Department of Biomedical Informatics, Columbia University Irving Medical Center, New York, New York, USA
- <sup>30</sup>Medical Informatics Services, New York-Presbyterian Hospital, New York, NY, USA
- <sup>31</sup>Department of Biostatistics, Fielding School of Public Health, University of California, Los Angeles, California, USA
- <sup>32</sup>The OHDSI Center at the Roux Institute, Northeastern University, Portland, ME, USA

**Twitter** Diana Puente @DpuenteDiana, Carlos Areia @C\_Areia and Talita Duarte-Salles @TDuarte\_Salles

**Acknowledgements** We would like to acknowledge the patients who suffered from or died of this devastating disease and their families and carers. We also thank the healthcare professionals involved in the management of COVID-19 during these challenging times, from primary care to intensive care units. We appreciate the Korean Health Insurance Review and Assessment Service for providing data. We also thank the database curation teams around the world, including the COVIDMAR Group (JP Horcajada, R Güerri, J Villar, M Montero, S Gómez-Zorrilla, M Arenas-Miras, J Gómez-Junyent, I Arrieta, E Sendra, S Castañeda, E Letang, I Pelegrín, A Rial, J Rodríguez, C Gimenez, J Soldado, E García). We also thank the important contribution to this work of Dr Daniel Prieto-Alhambra.

**Contributors** CRey, AGS, CA, AP-U, AG, FN, AO, GH, PRR, KK, TD-S, KEL, SLD, MR, ER, SF-B and AP provided substantial contribution to the conception or design, analysis and interpretation of data for the work. CRey, AGS, CA, AP-U, AG, FN, AO, GH, PRR, KK, TD-S, KEL, SLD, MR, ER, SF-B, AP, DP, NV, GdM, LSR, JMR, ILM, NS, PR, MAS, MEM, CB, LL, TMA, W-U-RA, OA, HA and DD drafted or revised the manuscript critically for important intellectual content. All authors approved the final version of the manuscript. CRey, AGS, CA, AP-U, AG, FN, AO, GH, PRR, KK, TD-S, LL, TMA, W-U-RA, OA, HA, DD, LMS, CRei, JDP and SCY agreed to be accountable for all aspects of the work (KEL and SLD only for VA data) in ensuring that questions related to the accuracy or integrity of any part of the work are appropriately investigated and resolved. TD-S acted as the guarantor and accepted full responsibility for the finished work, had access to the data, and controlled the decision to publish.

**Funding** This work was supported by several funders as follows: the European Health Data and Evidence Network received funding from the Innovative Medicines Initiative 2 Joint Undertaking (JU) under grant agreement number 806968. The JU received support from the European Union's Horizon 2020 research and innovation programme and EFPIA. This research received partial support from the National Institute for Health Research (NIHR) Oxford Biomedical Research Centre (BRC), US National Institutes of Health (R01 LM006910), US Department of Veterans Affairs, the Health Department from the Generalitat de Catalunya with a grant for research projects on SARS-CoV-2 and COVID-19 disease organised by the Direcció General de Recerca i Innovació en Salut, Janssen Research and Development, TFS, IOMED and IQVIA. The University of Oxford received funding related to this work from the Bill and Melinda Gates Foundation (Investment ID INV-016201 and INV-019257). TFS received funding related to this work from the University of Oxford. This work was also supported with funding (resources and facilities) of the Department of Veterans Affairs (VA) Informatics and Computing Infrastructure (VINCI) (VA HSR RES 13-457).

**Disclaimer** No funders had a direct role in this study. The views and opinions expressed are those of the authors and do not necessarily reflect those of the Clinician Scientist Award programme, NIHR, Department of Veterans Affairs or the US Government, NHS, or the Department of Health, England.

**Competing interests** SLD reports grants from Anolinx. MAS reports grants from US National Institutes of Health, grants from Department of Veterans Affairs, during

the conduct of the study; grants from IQVIA, personal fees from Janssen Research and Development, grants from US Food and Drug Administration, personal fees from Private Health Management, outside the submitted work. GH reports grants from NIH, during the conduct of the study; and grants from Janssen Research, outside the submitted work. FN reports being an employee of AstraZeneca until 2019 and holds some AstraZeneca shares, outside the submitted work. KK reports personal fees from the National Institutes of Health, outside the submitted work, and at the time of data analysis and initial drafting of the manuscript. KK was an employee of IQVIA. CRei reports he is an employee of IQVIA. GdM is an employee of IOMED. NV is an employee of TFS. AGS reports personal fees from Janssen R&D, outside the submitted work, and is a full-time employee of Janssen R&D and a Johnson and Johnson shareholder. CB reports personal fees from Janssen R&D, outside the submitted work, and is a full-time employee of Janssen R&D and a Johnson and Johnson shareholder. JDP reports grants from the National Library of Medicine, during the conduct of the study. AG is an employee of Regeneron Pharmaceuticals and reports stocks from Regeneron Pharmaceuticals. PRR reports having received research group grants from Innovative Medicine Initiative and Janssen Research and Development. PR reports being an employee of Janssen Research and Development and a shareholder of Johnson & Johnson. ER, SF-B, NS, LMS, DP, SCY, MR, AP-U, HA, KEL, MEM, AO, CA, CRey, TD-S, TMA, OA, W-U-RA, ILM, JMR, LSR, DD, LL and AP have nothing to declare. No other relationships or activities could appear to have influenced the submitted work.

**Patient consent for publication** Not required.

**Ethics approval** Before performing these analyses, all the data partners received Institutional Review Board (IRB) approval or exemption. STARR-OMOP had approval from IRB Panel #8 (RB-53248) registered to Leland Stanford Junior University under the Stanford Human Research Protection Program (HRPP). The use of VA-OMOP data was reviewed by the Department of Veterans Affairs Central IRB, was determined to meet the criteria for exemption under Exemption Category 4(3), and approved for waiver of HIPAA Authorization. The use of SIDIAP was approved by the Clinical Research Ethics Committee of the IDIAPJGol (project code: 20/070-PCV). The use of CPRD was approved by the Independent Scientific Advisory Committee (ISAC) (protocol number 20\_059RA2). The use of the CUIMC database was approved by the Columbia University Institutional Review Board as an OHDSI network study (IRB-AAA07805). The use of HMAR was approved by the Parc de Salut Mar Clinical Research Ethics Committee (Comité de Ética de la Investigación con medicamentos del Parc de Salut MAR, IRB-2020/9183). The use of HIRA database was approved by the IRB of Ajou University ('AJIRB-MED-EXP-20-061'). The Colorado Multiple Institutional Review Board, CB F490 University of Colorado, Anschutz Medical Campus extended an exemption of IRB certificate on 17 November 2020 for the use of the CU-AMC-HDC data for this study. Moreover, given that this study only used de-identified data with no transmission of patient-level information at any time during the analysis and that all data reported were aggregated and no identification of individual patients or physicians was possible, some databases (IQVIA-OpenClaims, IQVIA DA Germany, IQVIA LPD France, IQVIA LPD Italy, IPCI) considered this study as not human subject research and therefore, no further approval was necessary. Furthermore, the New England Institutional Review Board of Janssen Research and Development (Raritan, New Jersey) has determined that studies conducted on licensed copies of Optum EHR and HealthVerity are exempt from study-specific IRB review as these studies do not qualify as human subjects' research.

**Provenance and peer review** Not commissioned; externally peer reviewed.

**Data availability statement** Data may be obtained from a third party and are not publicly available. Open Science is a guiding principle within OHDSI. As such, we provide unfettered access to all open-source analysis tools employed in this study via <https://github.com/ohdsi-studies/Covid19CharacterizationCharybdis>, as well as all data and results artefacts that do not include patient-level health information via <https://data.odhsi.org/Covid19CharacterizationCharybdis/>. Data partners contributing to this study remain custodians of their individual patient-level health information and hold either IRB exemption or approval for participation.

**Supplemental material** This content has been supplied by the author(s). It has not been vetted by BMJ Publishing Group Limited (BMJ) and may not have been peer-reviewed. Any opinions or recommendations discussed are solely those of the author(s) and are not endorsed by BMJ. BMJ disclaims all liability and responsibility arising from any reliance placed on the content. Where the content includes any translated material, BMJ does not warrant the accuracy and reliability of the translations (including but not limited to local regulations, clinical guidelines, terminology, drug names and drug dosages), and is not responsible for any error and/or omissions arising from translation and adaptation or otherwise.

**Open access** This is an open access article distributed in accordance with the Creative Commons Attribution 4.0 Unported (CC BY 4.0) license, which permits others to copy, redistribute, remix, transform and build upon this work for any purpose, provided the original work is properly cited, a link to the licence is given, and indication of whether changes were made. See: <https://creativecommons.org/licenses/by/4.0/>.

#### ORCID iDs

Carlen Reyes <http://orcid.org/0000-0001-8486-3265>  
Osaid Alser <http://orcid.org/0000-0001-6743-803X>  
Heba Alghoul <http://orcid.org/0000-0001-8234-5843>  
Carlos Areia <http://orcid.org/0000-0002-4668-7069>  
Albert Prats-Urbe <http://orcid.org/0000-0003-1202-9153>  
Peter R Rijnbeek <http://orcid.org/0000-0003-0621-1979>  
Kristin Kostka <http://orcid.org/0000-0003-2595-8736>  
Talita Duarte-Salles <http://orcid.org/0000-0002-8274-0357>

#### REFERENCES

- 1 Weekly Operational Update on COVID-19-6 Sep 2021 [internet]. WHO. Available: <https://www.who.int/publications/m/item/weekly-operational-update-on-covid-19---6-september-2021>
- 2 Unger T, Borghi C, Charchar F. 2020 International Society of hypertension global hypertension practice guidelines. *J Hypertens* 2020;75:982–1004.
- 3 Cook TM. The importance of hypertension as a risk factor for severe illness and mortality in COVID-19. *Anaesthesia* 2020;75:976–7.
- 4 Gupta S, Hayek SS, Wang W, *et al*. Factors associated with death in critically ill patients with coronavirus disease 2019 in the US. *JAMA Intern Med* 2020;180:1436–12.
- 5 Jiménez E, Fontán-Vela M, Valencia J, *et al*. Characteristics, complications and outcomes among 1549 patients hospitalised with COVID-19 in a secondary hospital in Madrid, Spain: a retrospective case series study. *BMJ Open* 2020;10:e042398.
- 6 Huang S, Wang J, Liu F, *et al*. COVID-19 patients with hypertension have more severe disease: a multicenter retrospective observational study. *Hypertens Res* 2020;43:824–31.
- 7 Park BE, Lee JH, Park HK, *et al*. Impact of cardiovascular risk factors and cardiovascular diseases on outcomes in patients hospitalized with COVID-19 in Daegu metropolitan City. *J Korean Med Sci* 2021;36:e15.
- 8 Yao Q, Ni J, Hu T-T, *et al*. Clinical characteristics and outcomes in coronavirus disease 2019 (COVID-19) patients with and without hypertension: a retrospective study. *Rev Cardiovasc Med* 2020;21:615–25.
- 9 Zhou F, Yu T, Du R, *et al*. Clinical course and risk factors for mortality of adult inpatients with COVID-19 in Wuhan, China: a retrospective cohort study. *Lancet* 2020;395:1054–62.
- 10 Wang Y, Lu X, Li Y, *et al*. Clinical course and outcomes of 344 intensive care patients with COVID-19. *Am J Respir Crit Care Med* 2020;201:1430–4.
- 11 Grasselli G, Zangrillo A, Zanella A, *et al*. Baseline characteristics and outcomes of 1591 patients infected with SARS-CoV-2 admitted to ICUs of the Lombardy region, Italy. *JAMA* 2020;323:1574–81.
- 12 Gao C, Cai Y, Zhang K, *et al*. Association of hypertension and antihypertensive treatment with COVID-19 mortality: a retrospective observational study. *Eur Heart J* 2020;41:2058–66.
- 13 Guan W-J, Liang W-H, Zhao Y, *et al*. Comorbidity and its impact on 1590 patients with COVID-19 in China: a nationwide analysis. *Eur Respir J* 2020;55:2000547.
- 14 Ji W, Huh K, Kang M, *et al*. Effect of underlying comorbidities on the infection and severity of COVID-19 in Korea: a nationwide case-control study. *J Korean Med Sci* 2020;35:e237.
- 15 Chilimuri S, Sun H, Alemam A, *et al*. Predictors of mortality in adults admitted with COVID-19: retrospective cohort study from New York City. *West J Emerg Med* 2020;21:779–84.
- 16 Richardson S, Hirsch JS, Narasimhan M, *et al*. Presenting characteristics, comorbidities, and outcomes among 5700 patients hospitalized with COVID-19 in the new York City area. *JAMA* 2020;323:2052–9.
- 17 Dorjee K, Kim H, Bonomo E, *et al*. Prevalence and predictors of death and severe disease in patients hospitalized due to COVID-19: a comprehensive systematic review and meta-analysis of 77 studies and 38,000 patients. *PLoS One* 2020;15:e0243191.
- 18 Javanmardi F, Keshavarzi A, Akbari A, *et al*. Prevalence of underlying diseases in died cases of COVID-19: a systematic review and meta-analysis. *PLoS One* 2020;15:e0241265.

- 19 Pranata R, Lim MA, Huang I, *et al.* Hypertension is associated with increased mortality and severity of disease in COVID-19 pneumonia: a systematic review, meta-analysis and meta-regression. *J Renin Angiotensin Aldosterone Syst* 2020;21:147032032092689.
- 20 Silverio A, Di Maio M, Citro R, *et al.* Cardiovascular risk factors and mortality in hospitalized patients with COVID-19: systematic review and meta-analysis of 45 studies and 18,300 patients. *BMC Cardiovasc Disord* 2021;21:23.
- 21 Moazzami B, Chaichian S, Kasaeian A, *et al.* Metabolic risk factors and risk of Covid-19: a systematic review and meta-analysis. *PLoS One* 2020;15:e0243600.
- 22 Baj J, Karakula-Juchnowicz H, Teresiński G, *et al.* COVID-19: specific and non-specific clinical manifestations and symptoms: the current state of knowledge. *J Clin Med* 2020;9:1753.
- 23 Prieto-Alhambra D, Kostka K, Duarte-Salles T. Unraveling COVID-19: a large-scale characterization of 4.5 million COVID-19 cases using Charybdis. *Res Sq [Preprint]* 2021:rs.3.rs-279400.
- 24 García-Gil MDM, Hermosilla E, Prieto-Alhambra D, *et al.* Construction and validation of a scoring system for the selection of high-quality data in a Spanish population primary care database (SIDAP). *Inform Prim Care* 2011;19:135–45.
- 25 Datta S, Posada J, Olson G. A new paradigm for accelerating clinical data science at Stanford medicine. *arXiv* 2003;10534.
- 26 Voss EA, Makadia R, Matcho A, *et al.* Feasibility and utility of applications of the common data model to multiple, disparate observational health databases. *J Am Med Inform Assoc* 2015;22:553–64.
- 27 Tsimihodimos V, Gonzalez-Villalpando C, Meigs JB, *et al.* Hypertension and diabetes mellitus: Coprediction and time trajectories. *Hypertension* 2018;71:422–8.