

UC San Diego

UC San Diego Previously Published Works

Title

Color-Coded Imaging of Breast Cancer Metastatic Niche Formation in Nude Mice

Permalink

<https://escholarship.org/uc/item/9c16h6rw>

Journal

Journal of Cellular Biochemistry, 116(12)

ISSN

0730-2312

Authors

Suetsugu, Atsushi
Momiyama, Masashi
Hiroshima, Yukihiro
[et al.](#)

Publication Date

2015-12-01

DOI

10.1002/jcb.25227

Peer reviewed



Published in final edited form as:

J Cell Biochem. 2015 December ; 116(12): 2730–2734. doi:10.1002/jcb.25227.

Color-Coded Imaging of Breast Cancer-Metastatic Niche Formation in Nude Mice

Atsushi Suetsugu^{1,2,3}, Masashi Momiyama^{2,3}, Yukihiro Hiroshima^{2,3}, Masahito Shimizu¹, Shigetoyo Saji¹, Hisataka Moriwaki¹, Michael Bouvet³, and Robert M. Hoffman^{2,3}

¹Department of Gastroenterology, Gifu University Graduate School of Medicine, Gifu, Japan

²AntiCancer, Inc. San Diego, California

³Department of Surgery, University of California, San Diego, California

Abstract

We report here a color-coded imaging model of breast cancer-metastatic niche formation in which metastatic niches in the lung and liver of breast cancer can be identified. The transgenic green fluorescent protein (GFP)-expressing nude mouse was used as the host. The GFP nude mouse expresses GFP in all organs. However, GFP expression is dim in the liver parenchymal cells. Mouse mammary tumor cells (MMT 060562) (MMT), expressing red fluorescent protein (RFP), were injected in the tail vein of GFP nude mice to produce experimental lung metastasis and in the spleen of GFP nude mice to establish a liver metastasis model. Niche formation in the lung and liver metastasis was observed using very high resolution imaging systems. In the lung, GFP host-mouse cells accumulated around as few as a single MMT-RFP cell. In addition, GFP host cells were observed to form circle-shaped niches in the lung even without RFP cancer cells, which was possibly a niche in which future metastasis could be formed. In the liver, as with the lung, GFP host cells could form circle-shaped niches. Liver and lung metastases were removed surgically and cultured *in vitro*. MMT-RFP cells and GFP host cells resembling cancer-associated fibroblasts (CAFs) were observed interacting, suggesting that CAFs could serve as a metastatic niche.

Keywords

breast cancer; niche; cancer-associated fibroblasts; lung; liver; GFP; RFP; color-coded imaging

INTRODUCTION

Fluorescent proteins of multiple colors were used to develop a color-coded imaging model of the tumor microenvironment (TME). Red fluorescent protein (RFP, cyan fluorescent protein (CFP) and green fluorescent protein (GFP) transgenic nude mice used as hosts for

Correspondence to: Robert M. Hoffman, Ph.D., AntiCancer, Inc., 7917 Ostrow Street, San Diego, CA 92111, Tel: 858-654-2555, Fax: 858-268-4175, all@anticancer.com.

AUTHOR CONTRIBUTIONS

AS and RMH conceived and designed the experiments. AS performed the experiments. AS, MM, YH, MS, SS, HM, MB and RMH analyzed the data. RMH contributed reagents/materials/analysis tools. AS and RMH wrote the article.

cancer cells expressing a different color fluorescent protein [Yang et al., 2003, 2004, 2009; Suetsugu, et al., 2012a].

Egeblad et al. [2008] showed that stromal cells had higher motility in the periphery of the tumor than at the center using color-coding imaging. Tumors contain macrophages, fibroblasts, dendritic cells and lymphocytes in the TME [Egeblad et al., 2008]. Cancer-associated fibroblasts (CAFs) may stimulate proliferation of cancer cells, as well as invasion and angiogenesis [Kalluri and Zeisberg, 2006; Gaggioli et al., 2007; Erez et al., 2010; Pietras et al. 2008]. We have also demonstrated using color-coded imaging that tumors acquired stroma over time, including during passage and that the acquired stroma grew along with the tumor [Suetsugu et al., 2012b,c,d]. We previously showed that CAFs are recruited by metastasis which stimulate their growth [Suetsugu et al., 2011, 2012b]. We also reported that stromal cells are necessary for metastasis [Bouvet et al., 2006].

Lyden's group [Kaplan et al., 2005] pioneered the concept of the metastatic niche based on the color-coded models of the TME we developed.

The present study images the formation of metastatic niches for breast cancer in the lung and liver.

MATERIALS AND METHODS

Cell Culture

The mouse mammary tumor cell line MMT 060562 (MMT) was transformed to express RFP [Hoffman and Yang, 2006a,b,c]. RPMI 1640 with 10% FCS were used for cell culture at 37°C and 5% CO₂.

GFP Transgenic Mice

C57/B6-GFP mice [Okabe et al., 1997] were from the Research Institute for Microbial Diseases (Osaka University, Osaka, Japan). GFP is expressed in these mice driven by the chicken β -actin promoter and cytomegalovirus enhancer. The C57B6-GFP mice were crossed with nude (nu/nu) mice to obtain transgenic GFP nude mice [Yang et al., 2004] in the present study. Mouse studies were conducted under NIH Assurance number A3873-1.

Color-Coded Breast Cancer Lung Metastasis Model

MMT-RFP cells were injected in the tail vein of GFP nude mice under a ketamine mixture (10 ml ketamine HCl, 7.6 ml xylazine, 2.4 ml acepromazine maleate, and 10 ml H₂O).

***In Vivo* Imaging**

The OV100 Small Animal Imaging System (Olympus Corp., Tokyo, Japan) [Yamauchi et al., 2006], the IV100 scanning laser imaging system (Olympus) [Yang et al., 2007], the FV1000 confocal microscope (Olympus) [Uchugonova et al., 2013] and the MVX10 long-working distance fluorescence microscope (Olympus) [Kimura et al., 2010], were used for imaging [Hoffman, 2005; Hoffman and Yang, 2006a,b,c]. Organs were removed for ex vivo imaging.

RESULTS AND DISCUSSION

Imaging Niche Formation Around Breast Cancer Lung Metastasis

MMT-RFP cells were injected in the tail vein of transgenic GFP nude mice. At day-1, GFP host cells appeared to form niche in the lungs around the injected MMT-RFP cancer cells. By day-5, the niche became more extensive as the experimental breast cancer colonies grew.

On day 14 after cancer-cell injection, extensive GFP fluorescent host cells formation was observed around the experimental lung metastasis. High-magnification imaging visualized GFP fluorescent host cells surrounding the metastatic colonies. The lung metastasis was enriched with GFP-expressing host cells (Figs. 1, 2). GFP host cells were observed to form circle-shaped niches in the lung with one or even without MMT-RFP cells, which was possibly a niche in which future metastasis could be formed (Fig. 2). Eventually, very large numbers of MMT-RFP cells accumulated in the niche (Figs. 1, 2).

Imaging Niche Formation Around Breast Cancer Liver Metastasis

The spleen of GFP nude mice was used for injection of MMT-RFP cells. By day 14, the experimental liver metastasis were enriched with GFP-expressing host cells. The GFP-expressing hosts cells were recruited by the round liver metastasis appearing to form a niche for the metastatic colonies to grow (Fig. 3). The metastases were highly enriched with GFP cells compared to the rest of the liver.

Imaging the Intimate Interaction of Breast Cancer and Host Cells

Liver metastases were removed surgically and cultured *in vitro*. On day 1, round GFP cells and MMT-RFP cancer cells were observed interaction in culture. On day 3, stretched GFP fibroblasts-like and MMT-RFP cancer cells were observed (Fig. 4).

The GFP nude mouse is an especially useful model for imaging the TME in the liver since the liver parenchymal cells only dimly expressing GFP and GFP host stromal cells recruited by metastasis as thereby readily visualized. The present report demonstrates that MMT metastatic colonies in the lung and liver are coordinately formed by host and cancer cells. The host cells appear to form a niche for the metastatic cancer cells to proliferate. We previously observed that host cells are necrosis for metastasis to occur [Bouvet et al., 2006]. The intimate relationship we have observed between the host niche cells and the cancer cells in the metastatic colonies suggest host cell-cell interactions promote the metastatic colony growth. Culturing the metastatic colonies and confocal microscopy showed that host cells within the colony are fibroblast-like. Future experiments will determine the role of cancer-associated fibroblasts in metastatic niche formation.

The real-time color-coded tumor-stroma imaging model described in this report will be very useful for identifying host cells which form niches to enhance metastatic growth. The present report suggests cancer-associated fibroblasts (CAFs) participate in niche formation.

ACKNOWLEDGEMENTS

This study was supported in part by National Cancer Institute grant CA132971.

DEDICATION

This article is dedicated to the memory of A. R. Moossa, MD.

REFERENCES

- Bouvet M, Tsuji K, Yang M, Jiang P, Moossa AR, Hoffman RM. *In vivo* color-coded imaging of the interaction of colon cancer cells and splenocytes in the formation of liver metastases. *Cancer Res.* 2006; 66:11293–11297. [PubMed: 17145875]
- Egeblad M, Ewald AJ, Askautrud HA, Truitt ML, Welm BE, Bainbridge E, Peeters G, Krummel MF, Werb Z. Visualizing stromal cell dynamics in different tumor microenvironments by spinning disk confocal microscopy. *Dis Model Mech.* 2008; 1:155–167. [PubMed: 19048079]
- Erez N, Truitt M, Olson P, Arron ST, Hanahan D. Cancer-associated fibroblasts are activated in incipient neoplasia to orchestrate tumor-promoting inflammation in an NF-kappaB-dependent manner. *Cancer Cell.* 2010; 17:135–147. [PubMed: 20138012]
- Gaggioli C, Hooper S, Hidalgo-Carcedo C, Grosse R, Marshall JF, Harrington K, Sahai E. Fibroblast-led collective invasion of carcinoma cells with differing roles for RhoGTPases in leading and following cells. *Nat Cell Biol.* 2007; 9:1392–1400. [PubMed: 18037882]
- Hoffman RM. The multiple uses of fluorescent proteins to visualize cancer *in vivo*. *Nat Rev Cancer.* 2005; 5:796–806. [PubMed: 16195751]
- Hoffman RM, Yang M. Subcellular imaging in the live mouse. *Nat Protoc.* 2006a; 1:775–782. [PubMed: 17406307]
- Hoffman RM, Yang M. Color-coded fluorescence imaging of tumor–host interactions. *Nat Protoc.* 2006b; 1:928–935. [PubMed: 17406326]
- Hoffman RM, Yang M. Whole-body imaging with fluorescent proteins. *Nat Protoc.* 2006c; 1:1429–1438. [PubMed: 17406431]
- Kalluri R, Zeisberg M. Fibroblasts in cancer. *Nat Rev Cancer.* 2006; 6:392–401. [PubMed: 16572188]
- Kaplan RN, Riba RD, Zacharoulis S, Bramley AH, Vincent L, Costa C, MacDonald DD, Jin DK, Shido K, Kerns SA, Zhu Z, Hicklin D, Wu Y, Port JL, Altorki N, Port ER, Ruggero D, Shmelkov SV, Jensen KK, Rafii S, Lyden D. VEGFR1-positive haematopoietic bone marrow progenitors initiate the pre-metastatic niche. *Nature.* 2005; 438:820–827. [PubMed: 16341007]
- Kimura H, Momiyama M, Tomita K, Tsuchiya H, Hoffman RM. Long-working-distance fluorescence microscope with high-numerical-aperture objectives for variable-magnification imaging in live mice from macro- to subcellular. *J Biomed Optics.* 2010; 15:066029.
- Okabe M, Ikawa M, Kominami K, Nakanishi T, Nishimune Y. ‘Green mice’ as a source of ubiquitous green cells. *FEBS Lett.* 1997; 407:313–319. [PubMed: 9175875]
- Pietras K, Pahler J, Bergers G, Hanahan D. Functions of paracrine PDGF signaling in the proangiogenic tumor stroma revealed by pharmacological targeting. *PLoS Med.* 2008; 5:e19. [PubMed: 18232728]
- Suetsugu A, Osawa Y, Nagaki M, Saji S, Moriwaki H, Bouvet M, Hoffman RM. Imaging the recruitment of cancer-associated fibroblasts by liver-metastatic colon cancer. *J Cell Biochem.* 2011; 112:949–953. [PubMed: 21328469]
- Suetsugu A, Hassanein MK, Reynoso J, Osawa Y, Nagaki M, Moriwaki H, Saji S, Bouvet M, Hoffman RM. The cyan fluorescent protein nude mouse as a host for multicolor-coded imaging models of primary and metastatic tumor microenvironments. *Anticancer Res.* 2012a; 32:31–38. [PubMed: 22213285]
- Suetsugu A, Katz M, Fleming J, Truty M, Thomas R, Saji S, Moriwaki H, Bouvet M, Hoffman RM. Imageable fluorescent metastasis resulting in transgenic GFP mice orthotopically implanted with human-patient primary pancreatic cancer specimens. *Anticancer Res.* 2012b; 32:1175–1180. [PubMed: 22493347]
- Suetsugu A, Katz M, Fleming J, Moriwaki H, Bouvet M, Saji S, Hoffman RM. Multi-color palette of fluorescent proteins for imaging the tumor microenvironment of orthotopic tumorigraft mouse models of clinical pancreatic cancer specimens. *J Cell Biochem.* 2012c; 113:2290–2295. [PubMed: 22573550]

- Suetsugu A, Katz M, Fleming J, Truty M, Thomas R, Saji S, Moriwaki H, Bouvet M, Hoffman RM. Non-invasive fluorescent-protein imaging of orthotopic pancreatic-cancer-patient tumorgraft progression in nude mice. *Anticancer Res.* 2012d; 32:3063–3068. [PubMed: 22843874]
- Uchugonova A, Zhao M, Weinigel M, Zhang Y, Bouvet M, Hoffman RM, Koenig K. Multiphoton tomography visualizes collagen fibers in the tumor microenvironment that maintain cancer-cell anchorage and shape. *J Cell Biochem.* 2013; 114:99–102. [PubMed: 22886742]
- Yamauchi K, Yang M, Jiang P, Xu M, Yamamoto N, Tsuchiya H, Tomita K, Moossa AR, Bouvet M, Hoffman RM. Development of real-time subcellular dynamic multicolor imaging of cancer-cell trafficking in live mice with a variable-magnification whole-mouse imaging system. *Cancer Res.* 2006; 66:4208–4214. [PubMed: 16618743]
- Yang M, Li L, Jiang P, Moossa AR, Penman S, Hoffman RM. Dual-color fluorescence imaging distinguishes tumor cells from induced host angiogenic vessels and stromal cells. *Proc Natl Acad Sci USA.* 2003; 100:14259–14262. [PubMed: 14614130]
- Yang M, Reynoso J, Jiang P, Li L, Moossa AR, Hoffman RM. Transgenic nude mouse with ubiquitous green fluorescent protein expression as a host for human tumors. *Cancer Res.* 2004; 64:8651–8656. [PubMed: 15574773]
- Yang M, Jiang P, Hoffman RM. Whole-body subcellular multicolor imaging of tumor-host interaction and drug response in real time. *Cancer Res.* 67:5195–5200. [PubMed: 17545599]
- Yang M, Reynoso J, Bouvet M, Hoffman RM. A transgenic red fluorescent protein-expressing nude mouse for color-coded imaging of the tumor microenvironment. *J Cell Biochem.* 2009; 106:279–284. [PubMed: 19097136]

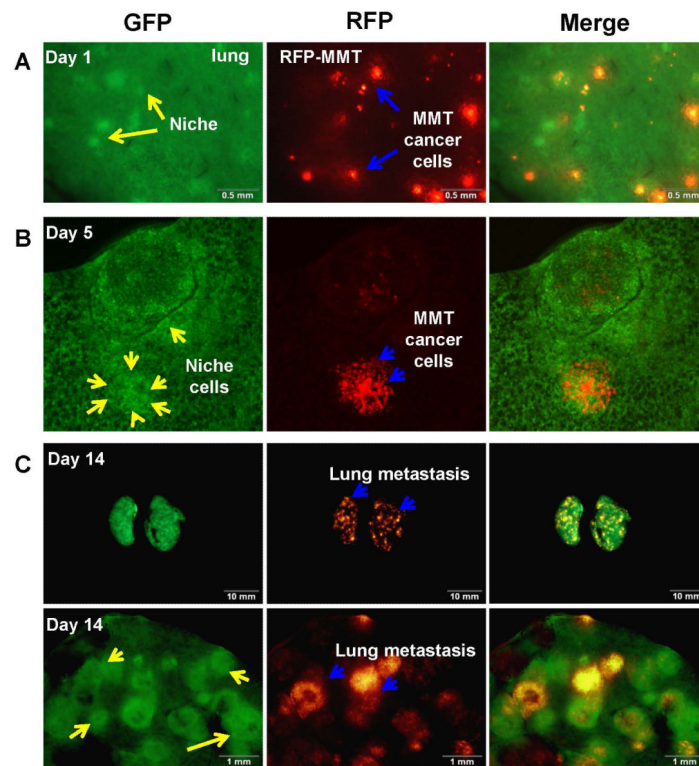


Figure 1. Imaging niche formation around MMT-RFP cells in the lung

Mouse mammary tumor cells (MMT 060562), expressing red fluorescent protein (RFP) (MMT-RFP), were injected in the tail vein of GFP nude mice to establish a lung metastasis model. **A.** Imaging of MMT-RFP cancer cells in the TME on day 1 after cancer-cell injection. Yellow arrows indicate GFP stromal cells forming a niche for the experimental metastases. Blue arrows indicates MMT cells. (Bar = 0.5 mm) **B.** Imaging of MMT-RFP cells and GFP stromal cells on day 5 after cancer-cell injection. Yellow arrows indicate the niche. Blue arrows indicate MMT cells. **C.** Imaging of MMT-RFP cells and stromal cells on day 14 after cancer-cell injection. Upper panels show the entire lungs. Blue arrows indicate lung metastasis. (Bar = 10 mm) Lower panels show high magnification image of the upper panels. Blue arrows indicate lung metastasis. Yellow arrows indicate circle-shaped niches in the lung. (Bar = 1 mm).

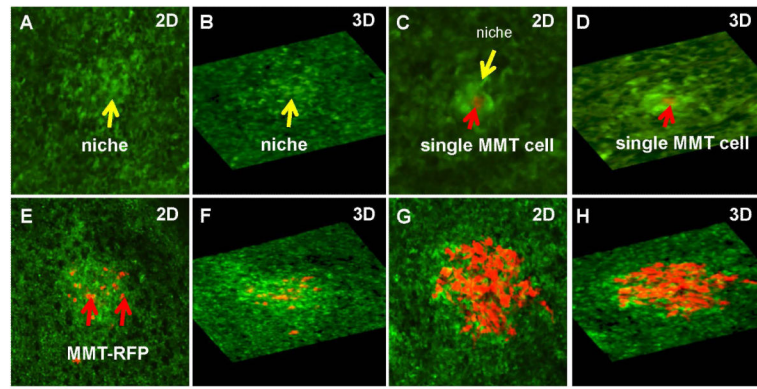


Figure 2. Confocal 3D imaging of niche formation around MMT-RFP cells in the lung
2D and 3D images of MMT-RFP cells and GFP stromal cells. Images were taken with a FV1000 scanning laser confocal microscope. Yellow arrows indicates metastatic niches. Red arrows indicates MMT-RFP cells. GFP host-mouse cells accumulated around a single MMT-RFP cell (C, D) and also seemed to form a niche before arrival of metastatic cancer cells (A, B). Eventually, many MMT-RFP cells accumulated in the niche formed by GFP-host cells (E-H).

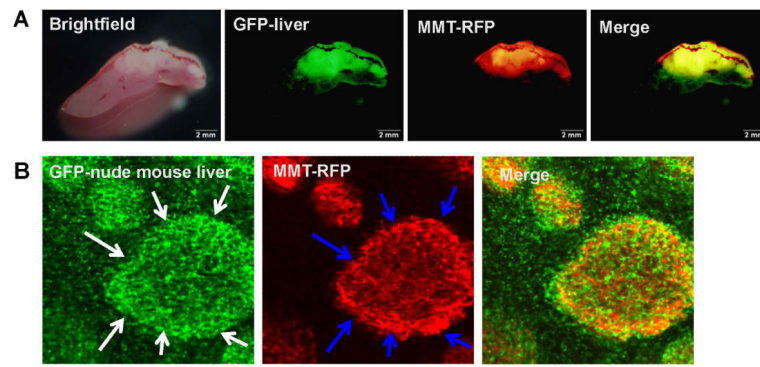


Figure 3. Imaging MMT-RFP metastatic niche in the liver

MMT-RFP cells were injected in the spleen of GFP nude mice to establish a liver metastasis model. **A.** Images of MMT-RFP cells and GFP host cells on day 14 after cancer-cell injection. The panels show the liver metastasis. **B.** High-magnification image of liver metastasis. Images were taken with an Olympus IV100 microscope. White arrows indicate liver metastatic niches. Blue arrows indicate MMT-RFP cells.

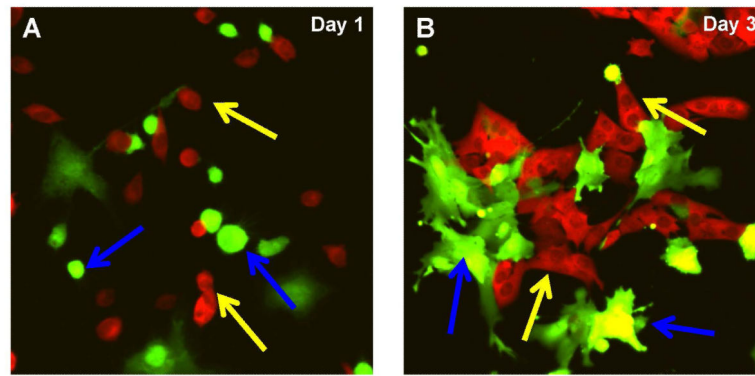


Figure 4. Imaging of GFP host and metastatic MMT-RFP cells interactions

Liver metastases were removed surgically and cultured *in vitro*. On day1, round GFP cells and MMT-RFP cells were observed in culture. On day 3, stretched GFP fibroblast-like cells and MMT-RFP cells were observed interacting. Yellow arrows indicate MMT-RFP cells. Blue arrows indicate host GFP fibroblast-like cells.