

# UCLA

## UCLA Encyclopedia of Egyptology

### Title

Quarrying and Mining (Stone)

### Permalink

<https://escholarship.org/uc/item/9bb918sd>

### Journal

UCLA Encyclopedia of Egyptology, 1(1)

### Author

Bloxam, Elizabeth

### Publication Date

2010-12-17

### Copyright Information

Copyright 2010 by the author(s). All rights reserved unless otherwise indicated. Contact the author(s) for any necessary permissions. Learn more at <https://escholarship.org/terms>

Peer reviewed

QUARRYING AND MINING (STONE)  
التحجير والتعدين (إستخراج الأحجار)

*Elizabeth Bloxam*

---

EDITORS

WILLEKE WENDRICH  
Editor-in-Chief  
Area Editor Material Culture  
University of California, Los Angeles

JACCO DIELEMAN  
Editor  
University of California, Los Angeles

ELIZABETH FROOD  
Editor  
University of Oxford

JOHN BAINES  
Senior Editorial Consultant  
University of Oxford

---

Short Citation:  
Bloxam, 2010, Quarrying and Mining (Stone). *UEE*.

Full Citation:  
Bloxam, Elizabeth, 2010, Quarrying and Mining (Stone). In Willeke Wendrich (ed.), *UCLA Encyclopedia of Egyptology*, Los Angeles.  
<http://digital2.library.ucla.edu/viewItem.do?ark=21198/zz0026jkd5>

---

## QUARRYING AND MINING (STONE) التحجير والتعدين (إستخراج الأحجار)

Elizabeth Bloxam

Steingewinnung

L'extraction de la pierre dans les mines et les carrières

*Ancient quarrying and mining sites, which represent some of the most threatened archaeological sites in Egypt, often present extensive cultural landscapes comprising a range of material culture; however, their research potential is still not fully recognized. Hard and soft stone quarrying and gemstone mining in ancient Egypt are poorly understood activities, although both are well attested throughout the Pharaonic era. Current research is re-shaping ideas about, for example, the major use of stone tools and fire in extracting hard stones, transmission of stone-working technologies across often deep time depths, and the role of skilled kin-groups as a social construct rather than large unskilled labor forces.*

تعد مواقع التحجير والتعدين بمصر القديمة من أكثر المواقع الأثرية المهددة، وهي تقدم نطاق واسعة من الثقافة المادية، إلا أن أبحاثهم لا تزال غير مكتملة. ويعتبر نشاط المحاجر سواء الأحجار الهشة والصلدة أو مناجم الأحجار الكريمة من الأنشطة المبهمة رغم أن كلاهما له شواهد واضحة خلال العصر الفرعوني. وتعمل الأبحاث الحالية على إعادة تشكيل الأفكار حول، على سبيل المثال، أهم استخدامات الأدوات الحجرية والنار (الذهب) في استخراج الأحجار الصلبة وانتقال تقنيات تشكيل الأحجار عبر فترات متباعدة من الزمن، وكذلك استخدام مجموعات من العائلات المتمرسه الماهرة كبناء مجتمعي بدلاً من القوة الضخمة من العمالة الغير متدربة.

**R**esearch into the technologies used to extract and transport stone and semi-precious stone from quarries and mines is still an underdeveloped field of study in Egyptology, despite the large-scale use of these materials in antiquity. Ancient quarry and mining sites (fig. 1) are the “forgotten” archaeological sites, even though they can comprise material culture such as roads, settlements, epigraphic data, and often spectacular partly finished monumental objects. Moreover, ancient production sites can enhance our understanding of the lives of the non-elite in antiquity, in particular the social organizations of raw material procurement, an aspect that still remains

poorly understood. As some of the most endangered archaeological sites in Egypt, ancient production sites are under enormous threat from modern quarrying, urban development, and other mega-projects. Hence, in more recent years, there has been some urgency in documenting these little known fragile cultural landscapes. Incorporating fresh data from recent archaeological and geological surveys of some key ancient quarries and mines, the intention of this article is to review the current status of our knowledge of raw material extraction in antiquity—with a focus on the Pharaonic period—from perspectives such as extraction technologies, logistics, and the social context.



Figure 1. Map of Egypt showing ancient quarries and mines mentioned in the text.

### *Location and Consumption of Stone and Gemstones*

1. Stone. Rocks quarried and crafted in antiquity are usually placed into two broad categories as either “hard” stones or “soft” stones. “Hard” stones are usually igneous rocks such as basalt, granite, diorite, granodiorite, dolerite, and porphyritic rocks, but can also include metamorphic rocks such as gneisses, metagabbro, serpentinite, and sedimentary rocks such as silicified sandstone (often termed “quartzite”) and chert. Key hard stone sources exploited during the Pharaonic period are the deposits of granite and granodiorite in Aswan, silicified sandstone at Gebel el-Ahmar near Cairo and on the west bank at Aswan, basalt in the Northern Fayum at Widan el-Faras (fig. 2), and “Chephren gneiss” from Gebel el-Asr (“Chephren’s Quarry”) in Lower Nubia. The greatest range of other hard stone deposits are located in the Eastern Desert (Aston et al. 2000: 8 - 16).

“Soft” stones usually refer to sedimentary rocks such as sandstone, limestone, gypsum, and travertine. All these rocks occur in a range of geographical locations throughout Egypt,



Figure 2. Widan el-Faras. Old Kingdom basalt quarries, Northern Fayum desert.

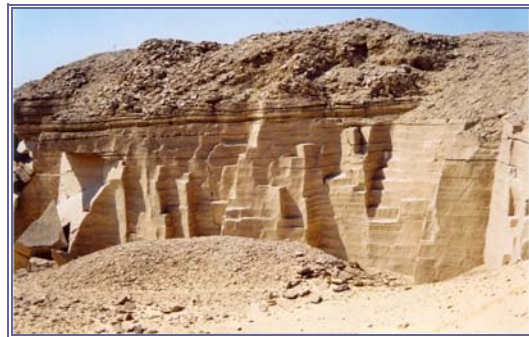


Figure 3. Gebel el-Silsila sandstone quarries between Edfu and Aswan.

with limestone, sandstone, and travertine deposits largely situated inside the Nile valley between Cairo in the north and Esna in the south. Key soft stone deposits exploited during antiquity occur at Hatnub (travertine), in the region of the Muqattam hills near Cairo (limestone), and between Aswan and Edfu at Gebel el-Silsila (sandstone; fig. 3). The exception to these Nile valley locations are sources of gypsum that occur most densely in the Northern Fayum (Aston et al. 2000: 8 - 16).

It is beyond the scope of this article to cover the whole spectrum of elite stone consumption in antiquity, although in general terms during the Pharaonic period, the greatest use of hard stones occurred between the Predynastic (late 4<sup>th</sup> millennium BCE) into the mid Old Kingdom (mid 3<sup>rd</sup> millennium BCE). Stone vessels, life-sized statuary, and elements in monumental architecture were key



Figure 4. “Chephren gneiss” life-size statue of Khafra in the Egyptian Museum, Cairo. 4<sup>th</sup> Dynasty.

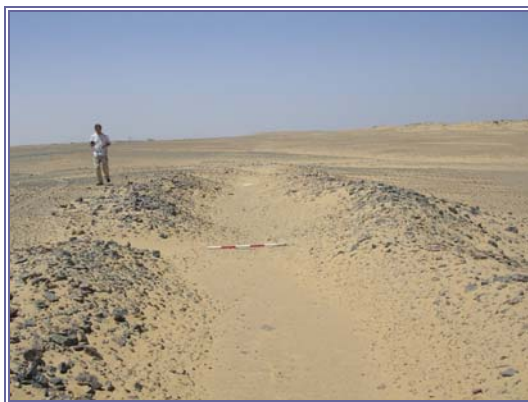


Figure 5. Longitudinal subterranean Middle Kingdom carnelian mine bordered with spoil heaps. Stele Ridge, Lower Nubia.

uses of the largest range of hard stones, peaking between the 4<sup>th</sup> and 5<sup>th</sup> Dynasties (fig. 4). Aswan red granite and basalt were the most extensively exploited hard stones utilized in architectural elements of the Old Kingdom pyramid complexes at Giza and Abusir (Mallory-Greenough et al. 2000; Röder 1965). The utilitarian use of largely hard stones for

tools, grinding equipment, and other domestic purposes was constant throughout antiquity. Soft stones such as sandstone and limestone were used almost continuously in the construction of monumental buildings from the Early Dynastic into the Roman Period. Travertine was also an important soft stone exploited in antiquity, particularly for stone vessels and also monumental architecture (see *Bibliographic Notes*).

2. Gemstones. Gemstones such as amazonite, amethyst, jasper, garnet, turquoise, peridot, emerald, and carnelian were all mined in Egypt during antiquity, largely for jewelry (Aston et al. 2000: 65). The main geographical locations of some of the most important gemstone mines are in the Eastern Desert, such as Wadi Sikait (emerald; Shaw 2002), the Gebels Migif and Hafafit (amazonite; Harrell and Osman 2007), and Wadi el-Hudi (amethyst; Fakhry 1952; Shaw and Jameson 1993). Stele Ridge in Lower Nubia in the environs of Gebel el-Asr (“Chephren’s Quarry”) is the only known source of carnelian (fig. 5; Bloxam 2006; Engelbach 1938), and the Sinai has concentrations of turquoise and copper mines, the most well known being at Serabit el-Khadim. All these sources were exploited in antiquity, although the explosion in gemstone mining is most associated with the Middle Kingdom (Shaw 1998, 2002).

#### *Stone Extraction Technologies: A Review*

Most of the hard and soft stone sources known in Egypt were exploited to varying degrees and purposes since prehistory into at least the Roman Period. The nature of the deposit, in terms of its physical properties, was a key factor in how the rocks were extracted (Heldal, Bloxam, and Storemyr 2007). Although later quarrying is always destroying evidence of the earliest extraction techniques, it is generally agreed that the earliest hard stone quarrying in the Predynastic for ornamental objects, such as stone vessels, utilized more easily accessible boulders or “blocky” remains of hard stones (Lucas 1934: 201, 211). It was not until the



quest for hard stones used in monumental architecture and life-size statuary that it became necessary to target bedrock (Heldal and Storemyr 2007: 102 - 116).

There is still considerable debate about the technologies of both hard and soft stone extraction, in particular the extent to which metal tools were used (Aston et al. 2000: 7). Given the constant re-use of metal, there is an obvious bias in the archaeological record, because such material in the form of tools is rarely found in production sites. Stone tools are without exception the most common implements found in production sites. Yet in accordance with Arnold (1991: 33 - 36) and also from subsequent studies, there is generally an undervaluing of the role that stone tools did actually play in both the extraction and dressing of stone blocks, even after the introduction of metal technologies (Stocks 2003). Moreover, in the hard stone granite and silicified sandstone quarries in Aswan and the gneiss quarries at Gebel el-Asr (“Chephren’s Quarry”), fresh evidence suggests that stone tools in combination with fire were key technologies used in ornamental stone production from the Old Kingdom into at least the Ptolemaic Period (Heldal 2009; Heldal and Storemyr 2007: 104 - 116; Heldal et al. 2005: 15 - 21; Storemyr et al. 2002). Similarly, the use of fire-setting to extract graywacke in the Wadi Hammamat has recently been discovered by the author. Charcoal, burnt flakes of stone, and often fired mud-bricks are key remains left by this process in primary extraction and also in secondary production for channeling, trimming, and shaping blocks. Pounding with stone tools to further flatten and smooth surfaces is also attested by the clearly visible marks left by these tools on partially worked objects found in the quarries (fig. 6).

Although it is extremely difficult to determine when fire-setting was gradually phased out as a technology in hard stone quarrying, the current view is that with the introduction of iron technology by the Ptolemaic Period, the “wedging” technique took precedence (Aston et al. 2000: 7; Röder 1965). Typified by the distinctive “trapezoidal” wedge holes left on



Figure 6. Partially completed silicified sandstone (quartzite) ornamental object of the New Kingdom (either an Osiride statue or truncated obelisk) showing marks of pounders. Khnum Quarry, west bank Aswan.

quarry faces, these have been subject to intense scrutiny, in terms of technology as well as establishing chronologies of quarrying (Röder 1965). Metal tools such as picks and chisels seem to have been employed in some part of the process of cutting the wedge holes, given the distinctive marks left by these tools on quarry faces; yet controversy still remains as to whether wood or metal wedges were employed to finally split the stone (Arnold 1991: 39; Aston et al. 2000: 7).

The use of metal in the extraction of soft stones is also problematic; the suggestion from studies of the Gebel el-Silsila sandstone quarries is that “softer copper chisels” were utilized during the Old and Middle Kingdoms, with “harder bronze chisels” coming into use by the New Kingdom (Klemm and Klemm 1981: figs. 32, 38.1 - 38.3). The blocks were then believed to have been levered out using wooden beams. Fresh arguments have suggested that the use of pointed picks and axes has been largely overlooked, and similar to hard stone quarrying, stone tools may have had a greater use in the dressing and quarrying of soft stones with metal chisels employed only for special purposes (Arnold 1991: 33 - 36). In addition, recent research undertaken at the Wadi el-Nakhla limestone gallery quarries near Deir el-Bersha, particularly those of the Late Period, has revealed grids of red ocher

lines on the roof that presumably had some practical purpose in designating work areas for the quarriers (Klemm and Klemm 2008: 91 - 92; Willems et al. 2006; Willems et al. 2004).

It is important to remember that similar to hard stone quarrying, geological awareness was key in determining the best method of extraction. With this aspect in mind, it has to be noted that in the well-preserved Old Kingdom gypsum quarries at Umm el-Sawan, the combination of locally acquired fossilized wood, minimally worked into rod-shaped pieces, found associated with stone hammers largely of chert occurs in significant quantities to suggest their wholesale use as tools (Bloxam and Heldal 2007: 312 - 314; Heldal et al. 2009: 54 - 59).

Finishing of objects in the quarries seems to be dependent upon how far the stone had to travel to the Nile. At the Aswan granite quarries, which lie directly on the Nile, objects seem to have been almost completed in the quarries. The famous “unfinished obelisk” and New Kingdom Osiride statue, which still lie attached to the bedrock, are such examples. In quarries outside of the Nile valley, evidence from discarded objects suggests that they were only partially completed to form rough outlines of their intended final form, probably to reduce the transport weight (figs. 7 and 8; Bloxam 2003; Harrell 2002; Heldal, Bloxam, and Storemyr 2007).

### *Gemstone Mining*

Gemstone mines in Egypt, similar to quarries, are under pressure from modern mining. Due to almost continuous mining of some key resources, their preservation, in terms of identifying the earliest phases of mining, is largely poor. Moreover, given the large quantities of epigraphic data found in mining contexts, such as standing stelae, votive objects, and a temple to Hathor at Serabit el-Khadim, past research has largely focused on documenting these aspects of the material culture, rather than the mines themselves (Bonnet and Valbelle 1997; Fakhry 1952; Gardiner et al. 1955; Sadek 1980 - 1985).



Figure 7. Osiride statue (New Kingdom) lying in the Aswan granite quarries.

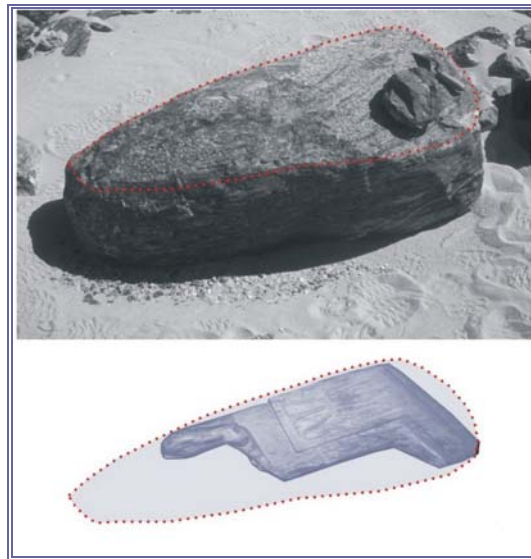


Figure 8. “Chephren gneiss” block at Gebel el-Asr (“Chephren’s Quarry”) roughly shaped into a statue. Old Kingdom, 4<sup>th</sup> Dynasty.

Although our knowledge of gemstone extraction techniques in the Pharaonic period is limited, the main corpus of objects remaining in such sites are stone tools, which once again suggests the important role they played in separating gemstones from ore bearing rocks.

The carnelian mines at Stele Ridge in the environs of Gebel el-Asr (“Chephren’s Quarry”) in Lower Nubia present one of the few well preserved Pharaonic gemstone mining sites, largely of the Middle Kingdom (Bloxam 2006: 289 - 290; Engelbach 1933, 1938). The mines are extremely hard to visualize due to them being sub-surface

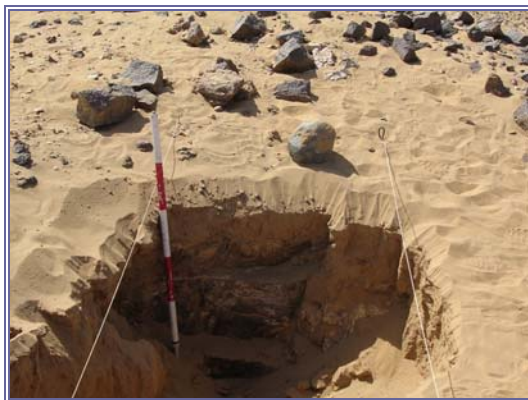


Figure 9. Partially excavated carnelian mine, 1 meter deep. Stone pounder alongside was found in the base of the mine. Stele Ridge, Lower Nubia.

extractions characterized on the surface as circular, oval, and longitudinal subterranean trenches surrounded by spoil heaps. These shallow subterranean extractions, often only a meter in depth, were extensively exploited to access the stone that occurs in cracks between granite outcrops. Stone tools seem to have been the main implements used to separate the gemstone from the ore, given the absence of marks made by metal. Pounders found inside an excavated mine and in surrounding areas suggest that the method of mining was by pounding of the granite to release the gemstone (fig. 9; Bloxam 2006: 289).

Stone tool assemblages made up of flint scrapers, hand axes, and pounders comprise the largest corpus of mining tools found at the Serabit el-Khadim turquoise and copper mines. Yet it is interesting to note, given that these mines were intensively exploited between the Middle and New Kingdom, that these assemblages show little variation from those found in earlier nearby Chalcolithic sites, implying no demonstrable transformation between Early Dynastic Period and Middle Kingdom mining techniques (Beit Arieh 1980: 45 - 64; Petrie and Currelly 1906: 161 - 162). Despite the problems in assessing transformations in mining technologies, it is suggested that the Middle Kingdom mines are more represented by horizontal tunneling and mines in the New Kingdom by the creation of large galleries



Figure 10. Converging New Kingdom paved roads at Gebel Gulab, west bank Aswan.

with deep hollows made in the surfaces (Chartier-Raymond et al. 1994: 76; Petrie and Currelly 1906: 60).

#### *Logistics of Stone Transport*

Transport infrastructure in quarries can vary according to the nature of the ground surface—and steep descents—over which the stone had to travel on its journey to the Nile. The importance of water in the transport process of large objects was clearly vital, the termini of most quarry roads linking in some way to the Nile or its nearest tributaries (Bloxam 2003; Kelany et al. 2007; Klemm and Klemm 2008: 52). New Kingdom quarry roads associated with the transport of large ornamental objects from the silicified sandstone quarries at Gebel Gulab on the west bank at Aswan are some of the most extensive and best preserved in Egypt (Bloxam and Storemyr 2005; Heldal et al. 2005: 32 - 33; Heldal, Bloxam, Storemyr et al. 2007: 151 - 162). These networks comprise secondary paved roads that lead directly into New Kingdom quarries from where large objects were extracted. The roads all converge onto a central artery, which traverses Gebel Gulab and then changes character into more ramp-like structures to ease passage of the stone down towards the Nile (fig. 10).

The world's oldest paved quarry road connects the Old Kingdom basalt quarries of Widan el-Faras with the shores of ancient Lake Moeris at Qasr el-Sagha in the Northern



Fayum (Bloxam and Storemyr 2002; Harrell and Bown 1995). Constructed from local sandstone, limestone, basalt, and fossilized wood, the terminus of the 11 km road at a quay utilized the waters of Lake Moeris during high Nile floods. Although determining the levels of the Nile flood during the Old Kingdom still remains controversial, there is indirect evidence to make a correlation between high Nile floods and the transport of basalt on a large scale to the pyramids on the Giza plateau at this time.

Due to the lack of archaeological evidence in relation to vehicles associated with the movement of stone, there still remains the archaeological problem as to what type of vehicle was used in the overland transportation of stone. In general, there has been a tendency to rely on the iconographic record to explain these practices, these suggesting the use of low-lying sledges. The Middle Kingdom Djehutihotep transport scene (Newberry 1894: 16 - 26, pls. XII - XIX) as well as a New Kingdom (18<sup>th</sup> Dynasty) depiction found in the Tura limestone quarries of a sledge conveying a block of stone drawn by oxen are often referred to (Arnold 1991: 61, 278; Charlton 1978: 128; Clarke and Engelbach 1930: 85, 88; Daressy 1911: 262 - 265). To what extent rollers were used under the sledges is still a matter of debate (Arnold 1991: 275; Klemm and Klemm 2008: 52), although the use of unfixed rollers with sledges to move heavy weights over large distances has been proven impractical (Cotterell and Kamminga 1990: 220).

Of the quarry roads described above, there are no wear marks, fixed tracks, or other indicators as to how the stone was moved over them. However, rare vehicle tracks associated with several loading ramps at Gebel el-Asr (“Chephren’s Quarry,” Old Kingdom) have certainly suggested that other types of conveyance, other than low-lying sledges, were used to transport stone from this quarry to the Nile (Bloxam 2000, 2003, 2007a; Shaw and Bloxam 1999). In essence, it seems as if adaptation to local geomorphological

conditions was key, and ways to minimize overland transportation were clearly sought. Recent research in the Aswan granite quarries has indicated that the construction of canals into the “unfinished obelisk quarry” was clearly to avoid any overland movement of these objects (Kelany et al. 2007).

### *The Social Context*

Assessing the social context of quarry and mining expeditions in the Pharaonic period in terms of numbers involved and hierarchies has been difficult to determine, given that associated settlement evidence is scant. Even in quarries outside of the Nile valley, such as Gebel el-Asr (“Chephren’s Quarry”), Widan el-Faras, and Umm el-Sawan, only small ephemeral camps characterized by low-level dry-stone walls and the use of natural rock overhangs have provided any evidence of habitation (Bloxam 2003; Bloxam and Storemyr 2002: 33 - 34; Bloxam and Heldal 2007: 315 - 316; Caton-Thompson and Gardner 1934, Vol. 1: 117 - 120; Shaw 1994; Shaw and Bloxam 1999; Shaw et al. 2001). Ceramics are also minimal in these and other quarry sites; hence, estimating the numbers of people involved in these activities is problematic and why there has been a reliance on textual sources. However, even taking into account poor preservation, recent findings cannot attest to quarry labor forces being over a maximum of 200 individuals, thus largely contradicting the Wadi Hammamat quarry inscriptions, which list expeditions into the tens of thousands (Coyat and Montet 1912; Goyon 1957).

In terms of provisioning of the labor force in quarries remote from permanent settlements and crucial access to water, evidence from excavation of two small camps and several wells at Gebel el-Asr (“Chephren’s Quarry”) in the Western Desert has given us some decisive insights. Constituting dwellings for no more than 25 people, one-third of each camp was devoted to food production, in particular bread making. In addition to consumption of local fish, birds, and mammals, access to water was relatively easy

from shallow wells only up to one meter in depth (Bloxam 2003, 2007a). The shallowness of the wells has provided important insights into the climatic conditions that prevailed during the Old Kingdom exploitation, indicating seasonally wetter periods far removed from what we see today.

Grappling with the archaeological problems of fragmentary data, particularly in terms of understanding the social organization of resource exploitation in the Pharaonic era, it has been important to reassess our ideas about the make up of quarry and mining labor forces from concepts in other areas of the social sciences. In particular cross-cultural comparison, anthropology, social archaeology, and landscape archaeology have provided useful models through which production data can be reinterpreted (Bloxam 2006, 2009b; Bloxam and Heldal 2007; Knapp 1998). Developing such methodologies is important if we are to understand the social context behind these activities, away from largely unreliable explanations via just a few written sources. Recent research is now widening the gap between the textual version of practice vis-à-vis the archaeological record.

It has recently been argued that small groups of specialists, rather than large detachments of unskilled workers, made up quarrying and

mining labor forces. These groups, loosely structured around kinship ties, might explain the general observation of undeniably skilled practice and transmission of specific extraction technologies over many generations (Bloxam 2006, 2007a, 2007b, 2009a, 2009b; Bloxam et al. 2009).

### *Conclusion*

Ancient quarrying and mining sites often present extensive cultural landscapes comprising a range of material culture; however, their research potential is still not fully recognized. Current research is re-shaping ideas about these poorly understood activities, for instance, the major use of stone tools and fire in extracting hard stones, transmission of stone-working technologies across often deep time depths, and the role of skilled kin-groups as a social construct rather than large unskilled labor forces. Although questions of chronology of extraction techniques, methods, and development of theoretical approaches to interpretation are still in their early stages, with a continued emphasis on archaeological and geological survey of these sites, the potential exists to further address some of these important questions.

---

### *Bibliographic Notes*

The pioneering works of James Harrell (1989, 2002), Harrell and Bown (1995), Harrell and Brown (1994), and Dietrich and Rosemarie Klemm (1993, 2008) still provide the most extensive foundation to the study of ancient quarrying and mining, describing their geology, petrography, extraction technologies, and archaeological infrastructure. Other works of James Harrell are listed on [his website](#). For a recent overview of threats to ancient quarries, see Storemyr et al. (2007). A comprehensive bibliography on the early pioneers and others who have studied quarries and mines over the last century is contained in Aston et al. (2000). Late nineteenth and early twentieth century archaeologists and geologists such as Ball (1939), Beadnell (1905), Petrie and Currelly (1906), Weigall (1910, 1913), Timme (1917), Hume (1935, 1937), and Caton-Thompson and Gardner (1934) investigated some ancient quarries as part of larger geological or archaeological expeditions, although archaeological approaches specific to production techniques were not undertaken until the work of Engelbach (1922, 1923) in the Aswan (granite/granodiorite) quarries; see also Clarke and Engelbach (1930), Lucas (1962), and Arnold (1991). For a recent summary of work undertaken during the QuarryScapes project in Egypt, in terms of documenting and mapping ancient quarry landscapes with a view to conservation, see Bloxam (2009a). Also see

the [QuarryScapes website](#) that includes an on-line atlas of ancient quarries across the Eastern Mediterranean, as well as a range of downloadable reports from this research project that are mentioned in the text. A volume of papers from the QuarryScapes project is published in Abu-Jaber et al. (2009). For geological explanations, see American Geological Institute (1962) and also Aston et al. (2000). Storemyr et al. (2007), Harrell and Storemyr (2009), and Shawarby et al. (2009) are the most up to date sources for more recent location maps of ancient quarries, their status of preservation, and legal status as registered archaeological sites. A comprehensive overview of hard and soft stone use for ornamental and building purposes during the Pharaonic period can be found in Aston (1994), Aston et al. (2000), and Bloxam (2003), while overviews of ornamental hard stone use in pyramid complexes can be found in Lehner (1997), Verner (2002), and Edwards (1991). Recent findings of prolific grinding stone production across the west bank at Aswan are given by Bloxam et al. (2007) and Bloxam (fc.); further mention of utilitarian uses of hard stones in antiquity are provided by Stocks (2003), Arnold (1991), and Lucas (1934). For archaeological investigations made at Serabit el-Khadim and other associated mining sites, see Petrie and Currelly (1906), Beit ArieH (1980), Beit ArieH et al. (1978), Chartier-Raymond et al. (1994), Giveon (1974), and Rothenberg (1987). For investigations of the galena mines (lead ore) at Gebel Zeit in the Eastern Desert, see Castel and Soukiassian (1989). The Roman quarries in the Eastern Desert at Mons Claudianus (Peacock and Maxfield 1997) and Mons Porphyrities (Maxfield and Peacock 2001) provide important evidence not only of the wedging technique but of partly finished objects such as columns. The excavations have provided evidence for large Roman Period quarry settlements in the Eastern Desert. Also in later mining contexts, such as in the Sikait Zubara region where well-preserved Roman Period settlements are attested, there is a noticeable absence of similarly large settlements in their Pharaonic period counterparts (Shaw 2002: 247; Shaw and Jameson 1993: 96). Transportation of stones has many different aspects, such as the use of high water stands for shipping; see, for instance, Shafei (1960: 193) and Wendorf and Schild (1976: 220) in regard to high floods and the connection between the Nile and ancient Lake Moeris in the Old Kingdom, and Shaw (1986, 1987) on investigations of the ancient quarry road that connects the Hatnub travertine quarries with the Nile. Political, economic, and social strategies in ancient quarrying and mining are addressed by Shaw (1994, 1998, 2002). For more detailed discussion of textual evidence in relation to archaeological evidence in Pharaonic period quarries, see Bloxam et al. (2009). For transliteration of quarrymen/stoneworker/stonemason, see Lesko and Lesko (2002).

## References

- Abu-Jaber, Nizar, Elizabeth Bloxam, Patrick Degryse, and Tom Heldal (eds.)  
2009 *QuarryScapes: Ancient stone quarry landscapes in the Eastern Mediterranean*. Geological Survey of Norway Special Publication 12. Trondheim: Geological Survey of Norway.
- American Geological Institute  
1962 *Dictionary of geological terms*. Garden City, N.Y.: Dolphin Books.
- Arnold, Dieter  
1991 *Building in Egypt: Pharaonic stone masonry*. New York and Oxford: Oxford University Press.
- Aston, Barbara  
1994 *Ancient Egyptian stone vessels: Materials and forms*. Heidelberg: Heidelberger Orientverlag.
- Aston, Barbara, James Harrell, and Ian Shaw  
2000 Stone. In *Ancient Egyptian materials and technology*, ed. Paul T. Nicholson, and Ian Shaw, pp. 5 - 77. Cambridge: Cambridge University Press.

- Ball, John  
1939 *Contributions to the geography of Egypt*. Cairo: Government Press.
- Beadnell, Hugh  
1905 *The topography and geology of the Fayum province of Egypt*. Cairo: National Printing Department.
- Beit Arieh, Itzhaq  
1980 A Chalcolithic site near Serâbît el-Khâdim. *Tel Aviv* 7(1 - 2), pp. 45 - 64.
- Beit Arieh, Itzhaq, Raphael Giveon, and Benjamin Saas  
1978 Explorations at Serâbît el-Khâdim: 1977. *Tel Aviv* 5(3 - 4), pp. 170 - 187.
- Bloxam, Elizabeth  
2000 Transportation of quarried hard stone from Lower Nubia to Giza during the Egyptian Old Kingdom. In *Current research in Egyptology 2000*, British Archaeological Reports International Series 909, ed. Angela McDonald, and Christina Riggs, pp. 19 - 27. Oxford: Archaeopress.  
2003 The organisation, transportation and logistics of hard stone quarrying in the Egyptian Old Kingdom: A comparative study. PhD dissertation, University College London.  
2006 Miners and mistresses: Middle Kingdom mining on the margins. *Journal of Social Archaeology* 6(2), pp. 277 - 303.  
2007a Who were the pharaohs' quarrymen? *Archaeology International* 9, pp. 23 - 27.  
2007b *The assessment of significance of ancient quarry landscapes: Problems and possible solutions. The case of the Aswan west bank*. QuarryScapes report. Trondheim: Geological Survey of Norway. (INCO-CT-2005-015416-Project QuarryScapes, downloadable from: [http://www.quarryscapes.no/text/publications/QS\\_del5\\_report.pdf](http://www.quarryscapes.no/text/publications/QS_del5_report.pdf). Accession date: July 2010.)  
2009a Mapping ancient quarry landscapes. *Egyptian Archaeology* 34, pp. 33 - 36.  
2009b New directions in identifying the significance of ancient quarry landscapes: Four concepts of landscape. In *QuarryScapes: Ancient stone quarry landscapes in the Eastern Mediterranean*, Geological Survey of Norway Special Publication 12, ed. Nizar Abu-Jaber, Elizabeth Bloxam, Patrick Degryse, and Tom Heldal, pp. 165 - 181. Trondheim: Geological Survey of Norway.  
fc. Visualising the invisible: Re-discovering the ancient grinding stone quarries of the Aswan west bank, Egypt. In *Bread for the people: The Rome Colloquium*, ed. David Peacock, and David Williams. Oxford: Archaeopress.
- Bloxam, Elizabeth, and Per Storemyr  
2002 Old Kingdom basalt quarrying activities at Widan el-Faras, Northern Faiyum Desert. *Journal of Egyptian Archaeology* 88, pp. 23 - 36.  
2005 The quarries of Gebel Gulab and Gebel Tingar, Aswan. *Egyptian Archaeology* 26, pp. 37 - 40.
- Bloxam, Elizabeth, and Tom Heldal  
2007 The industrial landscape of the Northern Faiyum Desert as a World Heritage site: Modelling 'outstanding universal value' of 3rd millennium BC stone quarrying in Egypt. *World Archaeology* 39(3), pp. 305 - 323.
- Bloxam, Elizabeth, Tom Heldal, and Per Storemyr  
2009 Hard stone quarrying in the Egyptian Old Kingdom (3rd millennium BC): Rethinking the social organisation. In *ASMOSLA VII: Proceedings of the 7th International Conference of the Association for the Study of Marble and Other Stones in Antiquity, Thassos 15 - 20 September, 2003*, Bulletin de Correspondance Hellénique Supplément 51, ed. Yannis Maniatis, pp. 187 - 201.
- Bloxam, Elizabeth, Tom Heldal, and Per Storemyr (eds.)  
2007 *Characterisation of complex quarry landscapes: An example from the west bank quarries, Aswan*. QuarryScapes report. Trondheim: Geological Survey of Norway. (INCO-CT-2005-015416-Project QuarryScapes, downloadable from: [http://www.quarryscapes.no/text/publications/QS\\_del4\\_Report\\_LR.pdf](http://www.quarryscapes.no/text/publications/QS_del4_Report_LR.pdf). Accession date: July 2010.)



- Bonnet, Charles, and Dominique Valbelle  
1997 The Middle Kingdom temple of Hathor at Serabit el-Khadim. In *The temple in ancient Egypt: New discoveries and recent research*, ed. Stephen Quirke, pp. 82 - 89. London: British Museum Press.
- Castel, Georges, and Georges Soukiassian  
1989 *Gebel el-Zeit I: Les mines de Galène (Égypte, IIe millénaire av. J.-C.)*. Fouilles de l'Institut français d'archéologie orientale 35. Cairo: Institut français d'archéologie orientale.
- Caton-Thompson, Gertrude, and Elinor Gardner  
1934 *The desert Fayum*. 2 volumes. London: The Royal Anthropological Institute of Great Britain and Ireland.
- Charlton, Nial  
1978 The Tura caves. *Journal of Egyptian Archaeology* 64, p. 128.
- Chartier-Raymond, Maryvonne, Brigitte Gratien, Claude Traunecker, and Jean-Marc Vinçon  
1994 Les sites miniers pharaoniques du Sud-Sinai: Quelques notes et observations de terrain. *Cahier de recherches de l'Institut de papyrologie et d'égyptologie de Lille* 16, pp. 31 - 77.
- Clarke, Somers, and Reginald Engelbach  
1930 *Ancient Egyptian masonry: The building craft*. London: Humphrey Milford, Oxford University Press.
- Cotterell, Brian, and Johan Kamminga  
1990 *Mechanics of pre-industrial technology: An introduction to the mechanics of ancient and traditional material culture*. Cambridge and New York: Cambridge University Press.
- Couyat, Jules, and Pierre Montet  
1912 *Les inscriptions hiéroglyphiques et hiératiques du Ouâdi Hammâmât*. Mémoires publiés par les membres de l'Institut français d'archéologie orientale 34. Cairo: Institut français d'archéologie orientale.
- Daressy, Georges  
1911 Inscriptions des carrières de Tourah et Mâsarah. *Annales du service des antiquités de l'Égypte* 11, pp. 257 - 268.
- Edwards, I. E. S.  
1991 *The pyramids of Egypt*. London: Penguin Books. (Revised edition.)
- Engelbach, Reginald  
1922 *The Aswân obelisk*. Cairo: Imprimerie de l'Institut français d'archéologie orientale.  
1923 *The problem of the obelisks: From a study of the unfinished obelisk at Aswan*. London: T. Fisher Unwin Ltd.  
1933 The quarries of the western Nubian Desert: A preliminary report. *Annales du service des antiquités de l'Égypte* 33, pp. 65 - 74.  
1938 The quarries of the western Nubian Desert and the ancient road to Tushka. *Annales du service des antiquités de l'Égypte* 38, pp. 369 - 390.
- Fakhry, Ahmed  
1952 *The inscriptions of the amethyst quarries at Wadi el Hudi*. Cairo: Government Press.
- Gardiner, Alan, Eric Peet, and Jaroslav Černý  
1955 *The inscriptions of Sinai II: Translations and commentary*. London: Oxford University Press, Egypt Exploration Society. (2nd edition.)
- Giveon, Raphael  
1974 Investigations in the Egyptian mining centres in Sinai: Preliminary report. *Tel Aviv* 1(3), pp. 100 - 108.
- Goyon, Georges  
1957 *Nouvelles inscriptions rupestres du Wadi Hammamat*. Paris: Imprimerie Nationale.
- Harrell, James  
1989 An inventory of ancient Egyptian quarries. *Newsletter of the American Research Center in Egypt* 146, pp. 1 - 7.

- 2002 Pharaonic stone quarries in the Egyptian desert. In *Egypt and Nubia: Gifts of the desert*, ed. Renée Friedman, pp. 232 - 243. London: British Museum Press.
- Harrell, James, and Max Brown  
1994 Chephren's Quarry in the Nubian desert of Egypt. In *Nubica: Internationales Jahrbuch für koptische, meroitisch-nubische, äthiopische und verwandte Studien*, Vol. 3/1, ed. Piotr O. Scholz, Stefan Jakobielski, Peter Nagel, and Paul Yule, pp. 43 - 57. Warsaw: Litterae et Artes.
- Harrell, James, and Thomas Bown  
1995 An Old Kingdom basalt quarry at Widan el-Faras and the quarry road to Lake Moeris. *Journal of the American Research Center in Egypt* 32, pp. 71 - 91.
- Harrell, James, and Ali Farrag Osman  
2007 Ancient amazonite quarries in the Eastern Desert. *Egyptian Archaeology* 30, pp. 26 - 28.
- Harrell, James, and Per Storemyr  
2009 Ancient Egyptian quarries: An illustrated overview. In *QuarryScapes: Ancient stone quarry landscapes in the Eastern Mediterranean*, Geological Survey of Norway Special Publication 12, ed. Nizar Abu-Jaber, Elizabeth Bloxam, Patrick Degryse, and Tom Heldal, pp. 7 - 50. Trondheim: Geological Survey of Norway.
- Heldal, Tom  
2009 Constructing a quarry landscape from empirical data: General perspectives and a case study at the Aswan west bank, Egypt. In *QuarryScapes: Ancient stone quarry landscapes in the Eastern Mediterranean*, Geological Survey of Norway Special Publication 12, ed. Nizar Abu-Jaber, Elizabeth Bloxam, Patrick Degryse, and Tom Heldal, pp. 125 - 154. Trondheim: Geological Survey of Norway.
- Heldal, Tom, and Per Storemyr  
2007 The quarries at the Aswan west bank. In *Characterisation of complex quarry landscapes: An example from the west bank quarries, Aswan*, QuarryScapes report, ed. Elizabeth Bloxam, Tom Heldal, and Per Storemyr, pp. 69 - 140. Trondheim: Geological Survey of Norway. (INCO-CT-2005-015416-Project QuarryScapes, downloadable from: [http://www.quarryscapes.no/text/publications/QS\\_del4\\_Report\\_LR.pdf](http://www.quarryscapes.no/text/publications/QS_del4_Report_LR.pdf). Accession date: July 2010.)
- Heldal, Tom, Elizabeth Bloxam, and Per Storemyr  
2007 Unravelling ancient stone quarry landscapes in the Eastern Mediterranean: Three Egyptian case studies. In *Broadening horizons: Multidisciplinary approaches to landscape study*, ed. Bart Ooghe, and Geert Verhoeven, pp. 90 - 112. Newcastle: Cambridge Scholars Press.
- Heldal, Tom, Elizabeth Bloxam, Per Storemyr, and Adel Kelany  
2005 The geology and archaeology of the ancient silicified sandstone quarries at Gebel Gulab and Gebel Tingar, Aswan (Egypt). *Marmora: International Journal for Archaeology, History and Archaeometry of Marbles and Stones* 1, pp. 11 - 35.  
2007 The quarry road network in the Gebel Tingar-Gebel Gulab area. In *Characterisation of complex quarry landscapes: An example from the west bank quarries, Aswan*, ed. Elizabeth Bloxam, Tom Heldal, and Per Storemyr, pp. 151 - 162. Trondheim: Geological Survey of Norway. (INCO-CT-2005-015416-Project QuarryScapes, downloadable from: [http://www.quarryscapes.no/text/publications/QS\\_del4\\_Report\\_LR.pdf](http://www.quarryscapes.no/text/publications/QS_del4_Report_LR.pdf). Accession date: July 2010.)
- Heldal, Tom, Elizabeth Bloxam, Patrick Degryse, Per Storemyr, and Adel Kelany  
2009 Gypsum quarries in the northern Faiyum quarry landscape, Egypt: A geo-archaeological case study. In *QuarryScapes: Ancient stone quarry landscapes in the Eastern Mediterranean*, Geological Survey of Norway Special Publication 12, ed. Nizar Abu-Jaber, Elizabeth Bloxam, Patrick Degryse, and Tom Heldal, pp. 51 - 66. Trondheim: Geological Survey of Norway.
- Hume, William Fraser  
1935 *Geology of Egypt II: The fundamental Precambrian rocks of Egypt and the Sudan: Their distribution age and character. Part 2: The later plutonic and minor intrusive rocks*. Cairo: Government Press.

- 1937 *Geology of Egypt II: The fundamental Precambrian rocks of Egypt and the Sudan: Their distribution age and character. Part 3: The minerals of economic value.* Cairo: Government Press.
- Kelany, Adel, Richard Parizek, Shelton Alexander, David Gold, Amr El-Gohary, Katarin Parizek, and Elizabeth Walters  
2007 Canal extension confirmed by Geophysical Surveys, Aswan Obelisk Quarry, Egypt. *Bulletin of the Tethys Geological Society* 2, pp. 35 - 56.
- Klemm, Rosemarie, and Dietrich Klemm  
1981 *Die Steine der Pharaonen.* Munich: Staatliche Sammlung Ägyptischer Kunst.  
1993 *Stein und Steinbrüche im alten Ägypten.* Berlin and New York: Springer.  
2008 *Stones and quarries in ancient Egypt.* London: British Museum Press.
- Knapp, Bernard  
1998 Social approaches to the archaeology and anthropology of mining. In *Social approaches to an industrial past: The archaeology and anthropology of mining*, ed. Bernard Knapp, Vincent Pigott, and Eugenia Herbert, pp. 1 - 23. London: Routledge.
- Lehner, Mark  
1997 *The complete pyramids.* London: Thames and Hudson.
- Lesko, Leonard, and Barbara Lesko (eds.)  
2002 *A dictionary of Late Egyptian.* Vol. 1. Providence, R.I.: B. C. Scribe Publications.
- Lucas, Alfred  
1934 *Ancient Egyptian materials and industries.* 2nd edition, revised. London: Edward Arnold. (Originally published 1926.)  
1962 *Ancient Egyptian materials and industries.* 4th edition, revised and enlarged by John Richard Harris. London: Edward Arnold. (Originally published 1926.)
- Mallory-Greenough, Leanne, John Greenough, and J. Victor Owen  
2000 The origin and use of basalt in Old Kingdom funerary temples. *Geoarchaeology* 15(4), pp. 315 - 330.
- Maxfield, Valerie, and David Peacock  
2001 *The Roman Imperial quarries: Survey and excavation at Mons Porphyrites, 1994 - 1998. Vol. I: Topography and quarries.* Excavation Memoir 67. London: Egypt Exploration Society.
- Newberry, Percy Edward  
1894 *El Bersheb I: The tomb of Tebuti-Hatep.* Archaeological Survey of Egypt 3rd Memoir. London and Boston: Egypt Exploration Fund.
- Peacock, David, and Valerie Maxfield  
1997 *Survey and excavation: Mons Claudianus, 1987 - 1993. Vol. I. Topography and quarries.* Fouilles de l'Institut français d'archéologie orientale 37. Cairo: Institut français d'archéologie orientale.
- Petrie, William Matthew Flinders, and Charles Currelly  
1906 *Researches in Sinai.* London: John Murray.
- Röder, Josef  
1965 Zur Steinbruchgeschichte des Rosengranits von Assuan. *Archäologischer Anzeiger* 3, pp. 467 - 552.
- Rothenberg, Beno  
1987 Pharaonic copper mines in South Sinai. *Institute for Archaeo-Metallurgical Studies* 10/11, pp. 1 - 7.
- Sadek, Ashraf  
1980- *The amethyst mining inscriptions of Wadi el-Hudi.* Part I and II (1980 - 1985). Warminster: Aris & Phillips.
- Shafei, Ali  
1960 Lake Moeris and Lahûn Mi-Wer and Ro-Hûn: The great Nile control project executed by the ancient Egyptians. *Bulletin de la Société de géographie d'Égypte* 33, pp. 187 - 217.

Shaw, Ian

- 1986 A survey at Hatnub. In *Amarna reports III*, Occasional Publications 4, ed. Barry Kemp, pp. 189 - 212. London: Egypt Exploration Society.
- 1987 The 1986 survey at Hatnub. In *Amarna reports IV*, Occasional Publications 5, ed. Barry Kemp, pp. 160 - 167. London: Egypt Exploration Society.
- 1994 Pharaonic quarrying and mining: Settlement and procurement in Egypt's marginal regions. *Antiquity* 68, pp. 108 - 119.
- 1998 Exploiting the desert frontier: The logistics and politics of ancient Egyptian mining expeditions. In *Social approaches to an industrial past: The archaeology and anthropology of mining*, ed. Bernard Knapp, Vincent Pigott, and Eugenia Herbert, pp. 242 - 258. London: Routledge.
- 2002 Life on the edge: Gemstones, politics and stress in the deserts of Egypt and Nubia. In *Egypt and Nubia: Gifts of the desert*, ed. Renée Friedman, pp. 244 - 251. London: British Museum Press.

Shaw, Ian, and Robert Jameson

- 1993 Amethyst mining in the Eastern Desert: A preliminary survey at Wadi el-Hudi. *Journal of Egyptian Archaeology* 79, pp. 81 - 97.

Shaw, Ian, and Elizabeth Bloxam

- 1999 Survey and excavation at the ancient Pharaonic gneiss quarrying site of Gebel el-Asr, Lower Nubia. *Sudan and Nubia Bulletin* 3, pp. 13 - 20.

Shaw, Ian, Elizabeth Bloxam, Judith Bunbury, Richard Lee, Angus Graham, and Deborah Darnell

- 2001 Survey and excavation at the Gebel el-Asr gneiss and quartz quarries in Lower Nubia (1997 - 2000). *Antiquity* 75, pp. 33 - 34.

Shawarby, Azza, Elshaimaa Fathy, Marwa Sadek, Naguib Amin, Rawda Yousri, and Sara Kayser

- 2009 National inventory and database of ancient stone quarry landscapes in Egypt. In *QuarryScapes: Ancient stone quarry landscapes in the Eastern Mediterranean*, Geological Survey of Norway Special Publication 12, ed. Nizar Abu-Jaber, Elizabeth Bloxam, Patrick Degryse, and Tom Heldal, pp. 155 - 164. Trondheim: Geological Survey of Norway.

Stocks, Denys

- 2003 *Experiments in Egyptian archaeology: Stoneworking technology in ancient Egypt*. London and New York: Routledge.

Storemyr, Per, Elizabeth Bloxam, Tom Heldal, and Abdou Salem

- 2002 Survey at Chephren's Quarry, Gebel el-Asr, Lower Nubia. *Sudan and Nubia Bulletin* 6, pp. 25 - 29.

Storemyr, Per, Elizabeth Bloxam, and Tom Heldal (eds.)

- 2007 *Risk assessment and monitoring of ancient Egyptian quarry landscapes*. QuarryScapes report. Trondheim: Geological Survey of Norway. (INCO-CT-2005-015416-Project QuarryScapes, downloadable from: [http://www.quarryscapes.no/text/publications/QS\\_Del6\\_report\\_SMALL.pdf](http://www.quarryscapes.no/text/publications/QS_Del6_report_SMALL.pdf). Accession date: July 2010.)

Timme, Paul

- 1917 *Tell el-Amarna vor der deutschen Ausgrabung im Jahre 1911*. Leipzig: J. C. Hinrichs.

Verner, Miroslav

- 2002 *The pyramids: Their archaeology and history*. London: Atlantic Books.

Weigall, Arthur

- 1910 *A guide to the antiquities of Upper Egypt from Abydos to the Sudan frontier*. New York: Macmillan.
- 1913 *Travels in the Upper Egyptian deserts*. London: W. Blackwood and Sons.

Wendorf, Fred, and Romauld Schild (eds.)

- 1976 *Prehistory of the Nile valley*. New York: Academic Press.

Willems, Harco, Marleen De Meyer, David Depraetere, Christoph Peeters, Lies Op De Beeck, Stefanie Vereecken, Bert Verrept, and Marc Depauw

- 2006 Preliminary report of the 2003 campaign of the Belgian Mission to Deir al-Barsha. *Mitteilungen des Deutschen Archäologischen Instituts, Abteilung Kairo* 62, pp. 307 - 339.



Willems, Harco, Marleen De Meyer, David Depraetere, Christoph Peeters, Stan Hendrickx, Tomasz Herbich, Dietrich Klemm, Rosemarie Klemm, Lies Op De Beeck, and Marc Depauw  
2004 Preliminary report of the 2002 campaign of the Belgian Mission to Deir al-Barsha. *Mitteilungen des Deutschen Archäologischen Instituts, Abteilung Kairo* 60, pp. 237 - 283.

## *External Links*

Harrell, James

Research on the archaeological geology of ancient Egypt. (Internet resource: <http://www.ceescience.utoledo.edu/Faculty/Harrell/Egypt/AGR Home.html>. Accession date July 2010.)

QuarryScapes Project

The QuarryScapes Project: Conservation of ancient stone quarry landscapes in the Eastern Mediterranean. (Internet resource: <http://www.quarryscapes.no>. Accession date: July 2010.)

## *Image Credits*

- Figure 1. Map of Egypt showing ancient quarries and mines mentioned in the text. (After Shaw 2002: 245.)
- Figure 2. Widan el-Faras. Old Kingdom basalt quarries, Northern Fayum desert. Photograph by the author.
- Figure 3. Gebel el-Silsila sandstone quarries between Edfu and Aswan. Photograph by the author.
- Figure 4. “Chephren gneiss” life-size statue of Khafra in the Egyptian Museum, Cairo. 4<sup>th</sup> Dynasty. Photograph by the author.
- Figure 5. Longitudinal subterranean Middle Kingdom carnelian mine bordered with spoil heaps. Stele Ridge, Lower Nubia. Photograph by the author.
- Figure 6. Partially completed silicified sandstone (quartzite) ornamental object of the New Kingdom (either an Osiride statue or truncated obelisk) showing marks of pounders. Khnum Quarry, west bank Aswan. Photograph by the author.
- Figure 7. Osiride statue (New Kingdom) lying in the Aswan granite quarries. Photograph by the author.
- Figure 8. “Chephren gneiss” block at Gebel el-Asr (“Chephren’s Quarry”) roughly shaped into a statue. Old Kingdom, 4<sup>th</sup> Dynasty. Photograph and figure by Tom Heldal.
- Figure 9. Partially excavated carnelian mine, 1 meter deep. Stone pounder alongside was found in the base of the mine. Stele Ridge, Lower Nubia. Photograph by the author.
- Figure 10. Converging New Kingdom paved roads at Gebel Gulab, west bank Aswan. Photograph by the author.