

UC San Diego

UC San Diego Previously Published Works

Title

Hierarchical Investigation of Genetic Influences on Response Inhibition in Healthy Young Adults

Permalink

<https://escholarship.org/uc/item/9986x160>

Journal

Experimental and Clinical Psychopharmacology, 25(6)

ISSN

1064-1297

Authors

Weafer, Jessica
Gray, Joshua C
Hernandez, Kyle
et al.

Publication Date

2017-12-01

DOI

10.1037/pha0000156

Peer reviewed

Hierarchical Investigation of Genetic Influences on Response Inhibition in Healthy Young Adults

Jessica Weafer
University of Chicago

Joshua C. Gray
University of Georgia and Brown University

Kyle Hernandez
University of Chicago

Abraham A. Palmer
University of California–San Diego

James MacKillop
McMaster University and Homewood Research Institute,
Homewood Health Centre, Guelph, Ontario, Canada

Harriet de Wit
University of Chicago

Poor inhibitory control is a known risk factor for substance use disorders, making it a priority to identify the determinants of these deficits. The aim of the current study was to identify genetic associations with inhibitory control using the stop signal task in a large sample ($n = 934$) of healthy young adults of European ancestry. We genotyped the subjects genome-wide and then used a hierarchical approach in which we tested seven a priori single nucleotide polymorphisms (SNPs) previously associated with stop signal task performance, approximately 9,000 SNPs designated as high-value addiction (HVA) markers by the SmokeScreen array, and approximately five million genotyped and imputed SNPs, followed by a gene-based association analysis using the resultant p values. A priori SNP analyses revealed nominally significant associations between response inhibition and one locus in *HTR2A* (rs6313; $p = .04$, dominance model, uncorrected) in the same direction as prior findings. A nominally significant association was also found in one locus in *ANKK1* (rs1800497; $p = .03$, uncorrected), although in the opposite direction of previous reports. After accounting for multiple comparisons, the HVA, genome-wide, and gene-based analyses yielded no significant findings. This study implicates variation in serotonergic and dopaminergic genes while underscoring the difficulty of detecting the influence of individual SNPs, even when biological information is used to prioritize testing. Although such small effect sizes suggest limited utility of individual SNPs in predicting risk for addiction or other impulse control disorders, they may nonetheless shed light on complex biological processes underlying poor inhibitory control.

Public Health Significance

These findings provide important information regarding genetic influences on inhibitory control. In addition, this study highlights the need for very large sample sizes in genetic studies, perhaps through combining data sets across research sites.

Keywords: inhibitory control, genetics, drug abuse, stop signal task, response inhibition

Supplemental materials: <http://dx.doi.org/10.1037/pha0000156.supp>

Jessica Weafer, Department of Psychiatry and Behavioral Neuroscience, University of Chicago; Joshua C. Gray, Department of Psychology, University of Georgia, and Department of Psychiatry and Human Behavior, Brown University; Kyle Hernandez, Center for Research Informatics, University of Chicago; Abraham A. Palmer, Department of Psychiatry and Institute for Genomic Medicine, University of California–San Diego; James MacKillop, Peter Boris Centre for Addictions Research, McMaster University, and Homewood Research Institute, Homewood Health Centre, Guelph, Ontario, Canada; Harriet de Wit, Department of Psychiatry and Behavioral Neuroscience, University of Chicago.

Jessica Weafer and Joshua C. Gray contributed equally to this article.

This research was partially supported by National Institute on Drug Abuse Grants R01 DA032015 (Harriet de Wit), National Institute on

Alcohol Abuse and Alcoholism Grant K01 AA024519 (Jessica Weafer), and the Peter Boris Chair in Addictions Research (James MacKillop). The funding sources had no other role other than financial support. All authors significantly contributed to the manuscript and have read and approved the final manuscript. None of the findings appearing in this manuscript have been presented elsewhere, including conferences, meetings, or websites. The authors thank James Baurley for providing a list of Smokescreen HVAs.

Correspondence concerning this article should be addressed to Harriet de Wit, Department of Psychiatry and Behavioral Neuroscience, University of Chicago, MC 3077, 5841 South Maryland Avenue, Chicago, IL 60637. E-mail: hdew@uchicago.edu

Poor inhibitory control, defined broadly as an impaired ability to inhibit maladaptive or inappropriate behavior, is a well-established risk factor for substance abuse (de Wit, 2009; Perry & Carroll, 2008; Weafer, Mitchell, & de Wit, 2014). Longitudinal studies indicate that children who exhibit high levels of disinhibited behavior are more likely to use drugs as adolescents (Iacono, Carlson, Taylor, Elkins, & McGue, 1999; Sher, Bartholow, & Wood, 2000; Tarter, Kirisci, Reynolds, & Mezzich, 2004), and in laboratory animals, poor inhibitory control is a predictor of rapid acquisition, escalation, and dysregulation of drug self-administration (Beckwith & Czachowski, 2016; Belin, Mar, Dalley, Robbins, & Everitt, 2008; Dalley et al., 2007; Diergaarde et al., 2008; Perry & Carroll, 2008). Associations between poor inhibitory control and risk for abuse have been observed across several drug classes, including alcohol, stimulants, and cannabis (Weafer et al., 2014), although perhaps less so for opiate drugs (Ahn & Vassileva, 2016; Badiani, Belin, Epstein, Calu, & Shaham, 2011). As such, there is a strong interest in determining the neurobiological factors, including genetic influences, underlying deficits in inhibition (Bevilacqua & Goldman, 2013; Iacono et al., 1999; MacKillop et al., 2016). Twin studies indicate that inhibitory control is heritable (31–50%; Crosbie et al., 2013; Gagne & Saudino, 2010; Schachar, Forget-Dubois, Dionne, Boivin, & Robaey, 2011); however, the specific genetic influences on inhibitory control are not yet known. Identifying genes that contribute to poor inhibition might help to identify individuals at risk for developing drug and alcohol problems and to develop strategies to prevent, diagnose, and treat drug and alcohol abuse. Moreover, the genetic influences on inhibitory control should theoretically be less complex and more easily detectable than genetic influences on the more diffuse and heterogeneous construct of substance abuse, thus making inhibition a useful intermediary construct for understanding genetic influences on risk for substance abuse.

Several laboratory measures have been developed to assess inhibitory control in humans, including the stop signal task (Logan, Schachar, & Tannock, 1997) and the go/no-go task. These tasks require the quick execution of a motor response (i.e., finger press) after “go” signals and rapid inhibition of this response when a “stop” or “no-go” signal is presented. Poor inhibitory control is indicated by a greater number of inhibitory failures or a longer amount of time needed to inhibit the response. For the current study, we focused on the stop signal task because drug users exhibit poorer inhibitory control on this task compared with healthy controls (Crunelle, Veltman, van Emmerik-van Oortmerssen, Booij, & van den Brink, 2013; Fillmore & Rush, 2002; Joos et al., 2013; Lawrence, Luty, Bogdan, Sahakian, & Clark, 2009; Moreno et al., 2012), and poorer inhibition on this task in childhood and adolescence predicts development of drug and alcohol problems later in life (Fernie et al., 2013; Nigg et al., 2006; Rubio et al., 2008).

Several candidate gene studies have reported associations between polymorphisms in specific genes and the stop signal task. These studies have identified associations in loci of monoaminergic genes, including noradrenergic (*ADRA2B* [Lei et al., 2012]), dopaminergic (*SLC6A3* [Cummins et al., 2012], *ANKK1* [Rodriguez-Jimenez et al., 2006; White, Morris, Lawford, & Young, 2008], and *DRD2* [Colzato, van den Wildenberg, & Hommel, 2013; Colzato, van den Wildenberg, van der Does, & Hommel, 2010]), and serotonergic (*HTR2A* [Jakubczyk et al.,

2012] and *TPH2* [Stoltenberg et al., 2006]) genes. However, these studies are limited by small sample sizes and heterogeneous populations varying in age, ethnicity, and substance use history. In addition, it is now widely appreciated that candidate gene studies are prone to false-positive errors due to their small sample sizes, failure to correct for multiple testing, and the potential for publication bias often noted in such studies (Duncan & Keller, 2011; Duncan, Pollastri, & Smoller, 2014; Hart, de Wit, & Palmer, 2013). As such, these initial findings require replication.

The aim of the current study was to examine genetic associations with inhibitory control using the stop signal task in a large sample of healthy young adults ($N = 934$). We aimed for a sample large enough to detect effects accounting for approximately 1.5% of the variance because common variants rarely exceed 2% in effect size (Park et al., 2010; Visscher et al., 2017). We excluded individuals who were heavy substance users to avoid the potential confound of the deleterious effects of chronic drug use on frontal cognitive function, including inhibition (Goldstein & Volkow, 2011; Jentsch & Taylor, 1999). We used a hierarchical analytic approach, in which groups of single nucleotide polymorphisms (SNPs) with higher priority were analyzed in three stratified subsets to maximize power to detect associations with response inhibition (Lin & Lee, 2012). First, we examined response inhibition in relation to a priori SNPs, providing a test of previously reported associations in the literature. Second, we tested the relationship between response inhibition and high-value addiction (HVA) markers prioritized in the SmokeScreen array by BioRealm (Baurley, Edlund, Pardamean, Conti, & Bergen, 2016). The high-value SNP list is a compilation of loci from peer-reviewed publications and research consortia, such as the NeuroSNP project (Bergen et al., 2013; Saccone et al., 2007). This allowed for a formal assessment of loci that are biologically relevant to addiction that was intended to increase our power. Third, we conducted an exploratory genome-wide association study (GWAS) that included approximately 5 million SNPs and a gene-based association analysis that included 18,942 genes. Thus, the study provided a strong test of a priori relationships, a principled examination of HVA markers, and an atheoretical genome-wide scan and gene-based analyses.

Method

Procedure

Participants were recruited at two sites (Athens, Georgia and Chicago, Illinois) through online and printed advertisements. Inclusion criteria were English fluency, age between 18 and 30 years, self-reported Caucasian race and non-Hispanic ethnicity (to control for population stratification; Hutchison, Stallings, McGeary, & Bryan, 2004), and scores of 11 or below on the Alcohol Use Disorders Identification Test (AUDIT) or Drug Use Disorders Identification Test (DUDIT) to minimize confounding effects of substantial substance use. The AUDIT/DUDIT cutoff score of 11 was chosen to screen out individuals with heavy substance use or substance use disorders, while still allowing for low to moderate levels of substance use, given the high normative prevalence of substance use among young adults (Aertgeerts et al., 2000; Substance Abuse and Mental Health Services Administration, 2014). Participants were excluded if they reported any life-

time substance dependence; any current psychiatric prescriptions; or treatment in the last 12 months for depression, bipolar disorder, general anxiety, social anxiety, posttraumatic stress disorder, obsessive-compulsive disorder, panic attacks/disorder, phobia, schizophrenia or related conditions, anorexia, bulimia, or binge eating. The study was approved by the Institutional Review Boards of the University of Chicago and the University of Georgia, and all participants provided informed consent.

Participants attended an experimental session during which they completed, in counterbalanced order, several self-report and behavioral measures, including the stop signal task (described in Measures). Participants were instructed to abstain from alcohol and drugs other than their usual amounts of caffeine and nicotine for 24 h before the visit, and breath and urine samples were obtained upon arrival to verify compliance. Participants were given two 5-min breaks during the 4-h session. Participants provided a saliva sample in an Oragene DNA kit (DNA Genotek Inc., Kanata, ON, Canada) to acquire DNA samples. Most of the participants received compensation for their time (\$10/h) whereas a minority ($n = 281$) were undergraduates who received research credit. In addition, participants could receive additional compensation from one of the tasks. Full details of the phenotypic assessment are reported in MacKillop et al. (2016).

Measures

Demographics. Demographic characteristics were assessed, including sex, age, race, household income, and education.

World Health Organization Attention-Deficit/Hyperactivity Disorder Adult Self-Report Scale (ASRS). The World Health Organization (WHO) Attention-Deficit/Hyperactivity Disorder (ADHD) Adult Self-Report Scale (ASRS) is an 18-item self-report screening scale for ADHD (Kessler et al., 2005). The analyses in this study examined the total ADHD score (composed of all 18 items across inattention and hyperactivity-impulsivity domains).

Alcohol and drug abuse. As part of the exclusion criteria described above, problematic alcohol and drug use were measured using the AUDIT (Saunders, Aasland, Babor, de la Fuente, & Grant, 1993) and DUDIT (Berman, Bergman, Palmstierna, & Schlyter, 2005), respectively. These scales assess quantity, frequency, and consequences associated with drinking and drug use.

Inhibitory control. Inhibitory control was assessed using a modified stop signal task (adapted from Logan et al., 1997), which measures the ability to inhibit a motor response. The task was administered on a desktop computer using E-prime software. Participants were instructed to respond to “go” signals (circles or squares) by pressing a key on the keyboard as quickly as possible and to inhibit responses on 25% of trials when a “stop” signal (auditory tone) was presented shortly after the go signal. The task consisted of three blocks, each with 48 go trials and 16 stop trials. The stop signal delay was set at 250 msec for the first stop trial of each block and was adjusted downward by 50 msec after each failed inhibition. Once a stop signal delay of 50 msec was reached, the delay was held constant at 50 msec until the end of the block. The primary outcome measure of response inhibition was the number of inhibitory failures on stop trials.¹

Power Analysis

GWAPower (Feng, Wang, Chen, & Lan, 2011) was used to generate power estimates for 934 individuals. A Bonferroni rather than false discovery rate (FDR) approach was used in the power analyses because FDR requires the empirical p values to generate the appropriate correction rate. For the 10 a priori loci, we were adequately powered (power >0.8) to detect SNPs with effects accounting for $\geq 1.3\%$ of variance. For the 8,762 HVA loci, we were adequately powered to detect SNPs with effects accounting for $\geq 2.8\%$ of variance. The GWAS and gene-based analyses were exploratory; therefore, no power analyses were conducted.

SNP Genotyping and Quality Control

Genotyping was performed using the Illumina PsychArray BeadChip platform, which includes approximately 600,000 SNPs; this platform has been optimized to capture the maximum amount of information about common variation. Quality control filtering was implemented in PLINK v1.9 (Chang et al., 2015). SNPs were filtered for call rates $<98\%$, Hardy-Weinberg equilibrium (HWE) violations of $p < 1 \times 10^{-6}$, and minor allele frequency (MAF) $<5\%$. After filtering, we had 437,652 SNPs that were used for imputation. Imputation of missing genotypes and of new SNPs was performed with IMPUTE2 v.2.3.1 (Howie, Donnelly, & Marchini, 2009) using the 1000 Genomes Phase 3 b37 reference panel (The 1000 Genomes Project Consortium, 2015). Imputed SNPs were excluded for exhibiting an information score of <0.3 , MAF $<5\%$, HWE violations of $p < 1 \times 10^{-6}$, missingness $>5\%$, and multiallelic status. Imputed SNPs with confidence <0.9 were set to missing for individuals. Four a priori loci were excluded for excessive missing values ($>5\%$). Finally, to ensure limited redundancy in the analysis of HVA SNPs via linkage disequilibrium and accurate implementation of FDR correction, the HVA loci were pruned using the plink command “-indep 50 5 5” (i.e., window size of 50 SNPs, shift the window at every 5 SNPs, and a variance inflation factor of 5, which implies R^2 of 0.8). After quality control, 10 a priori loci previously associated with stop signal task performance, 8,762 of the 20,652 HVA SNPs, and 4,873,750 genome-wide SNPs were available for analysis.

Participant Quality Control

One thousand participants had valid genotyping data (call rates $\geq 98\%$, inbreeding coefficient absolute value ≤ 0.02 , concordant self-reported sex and X-chromosome determined sex) and satisfied the inclusion/exclusion criteria. To correct any self-

¹ We used a variant of the stop signal task that did not provide the traditional measure of SSRT (Logan et al., 1997) but instead provided a measure of accuracy in the ability to inhibit a response. Our task used an adaptive stop signal delay model, but because it only adjusted downward, it did not provide the stop signal delay time at which participants could inhibit at a rate of 50% (necessary to calculate the SSRT). To confirm that the measure of inhibitory control used here is comparable to SSRT obtained from the traditional task, we tested a new sample of healthy young adults ($n = 20$) who completed both tasks to compare the outcome measures. As expected, inhibitory errors on the stop signal task used in the current study were significantly correlated with SSRT on the traditional stop signal task ($r = .56$; $p = .010$; see Figure S1 in the online supplemental material for a scatterplot of this correlation).

reported race that was misclassified as Caucasian, principal components analysis (PCA; Price et al., 2006) was conducted. Two population outliers were identified and removed by visual inspection of the principal components plot (see Figure S2 in the online supplemental material). Ten participants were excluded for missing data and 52 participants were excluded for invalid performance on the stop signal task, defined as <5 correct stop trials and <116 correct go trials. Finally, participants were assessed for cryptic relatedness (see Equation 3 in Yang, Lee, Goddard, & Visscher, 2011) and two were removed for relatedness >0.05, leaving a final sample of 934 European-ancestry participants.

Statistical Analysis

Stop signal task inhibitory failures were square root transformed to improve the distribution (before transformation: skewness = 1.04, kurtosis = 1.11; after transformation: skewness = 0.32; kurtosis = 0.19). Covariates for the study were ascertained via a univariate linear mixed model of inhibitory failures on the stop signal task with four candidate covariates: sex, age, income, and site (i.e., Athens or Chicago). Each covariate was tested as a fixed factor whereas the other three candidate covariates were entered into the model as covariates. Only variables that were significantly associated in the combined models were included as covariates in subsequent analyses. In addition, ADHD total score was explored as a covariate separately in a bivariate correlation analysis with stop signal task performance. PLINK v1.9 software was used to conduct univariate linear mixed model associations between the loci from each strata (10 a priori loci, 8,762 HVA loci, and 4,873,750 genome-wide SNPs) and response inhibition, adjusting for the significant candidate covariates and the top three genetic principal components from the PCA. Of the 10 a priori loci, 3 offered largely redundant information ($r^2 > 0.99$; all other loci exhibited $r^2 < 0.8$) and were removed from the primary analyses (the locus with the fewest missing values was retained). All analyses used an additive model; dominance models were also tested for the a priori loci because some previous studies have reported results based on dominance models. Versatile Gene-based Association Study 2 (VEGAS2) software was used to conduct gene-based association tests using the resultant p values from the GWAS (Mishra & Macgregor, 2015). We used the top 10% SNP test for optimal sensitivity and specificity of true positives (Wojcik, Kao, & Duggal, 2015). Given the recent report of an erratum in the original VEGAS2 method for generating empirical p values leading to increased Type I error rate, we used the updated script (for details, see Hecker, Masser, Prokopenko, Fier, & Lange, 2017). For the a priori loci, statistical significance was set at $p < 0.05$. For the prioritized HVA loci and the gene-based analyses, a Benjamini–Hochberg FDR correction was applied to the resultant p values from the analyses (Benjamini & Hochberg, 1995). For atheoretical genome-wide tests, SNPs were examined at $p < 5 \times 10^{-8}$ (e.g., Pe'er, Yelensky, Altshuler, & Daly, 2008).

Results

Sample Characteristics and Covariate Analyses

Participant characteristics and performance measures on the stop signal task are provided in Table 1 according to site (Chicago

Table 1
Participant Characteristics ($N = 934$)

Variable	University of Chicago ($n = 614$)	University of Georgia ($n = 320$)
Age (years)	22.87 (3.3)	19.4 (1.8)
Sex	61.6% female	63.6% female
AUDIT	4.93 (2.90)	3.04 (3.24)
DUDIT	1.74 (2.38)	0.55 (1.35)
Years of education ^a	15.4 (2.12)	12.97 (1.44)
SST inhibition errors ^b	3.61 (0.92)	3.93 (0.94)
SST go accuracy (%)	97.5 (2.5)	97.1 (2.8)
SST go reaction time (msec)	435.4 (61.2)	430.6 (61.8)

Note. Data presented as M (SD) or %. SST = stop signal task; AUDIT = Alcohol Use Disorders Identification Test; DUDIT = Drug Use Disorders Identification Test.

^a $N = 933$. ^b Square root transformed.

or Georgia). Mean number of inhibitory failures, go accuracy, and go reaction on the stop signal task were all correlated ($r_s > 0.23$, $p_s < 0.001$). In the univariate linear mixed model, age and site were significantly associated with inhibitory failures ($F(4, 927) = 1.57$, $p = 0.03$, partial $\eta_p^2 = 0.03$; $F(4, 927) = 6.00$, $p = 0.01$, $\eta_p^2 = 0.01$, respectively); thus, they were included as covariates. Specifically, younger age and testing in Georgia were associated with more inhibitory errors. Income and sex were not significantly related to inhibitory failures ($F(4, 927) = 1.13$, $p = 0.34$, partial $\eta_p^2 = 0.005$; $F(4, 927) = 0.25$, $p = 0.62$, $\eta_p^2 = 0.0003$, respectively); therefore, they were not covaried. Furthermore, ADHD total score was not associated with inhibitory failures, $r = 0.040$, $p = 0.226$, likely because of the small range of ADHD scores in this sample of healthy young adults; therefore, it was not included as a covariate.

Primary Analyses

A priori loci (tier 1). Of the seven loci tested for additive effects, one locus (rs1800497) was nominally significantly associated with response inhibition ($p = 0.03$, uncorrected); however, the direction of effects was opposite of that observed in previous reports. In addition, in the dominance tests, one locus (rs6313) was nominally significant ($p = 0.04$, uncorrected), and here the direction of the association was the same as previous reports using a dominance model. The associations are presented in Table 2 (the full 10 a priori loci are presented in Table S1 in the online supplemental material).

HVA markers (tier 2). Of the 8,762 HVA loci, none were significant using an FDR correction ($p < 5.7 \times 10^{-6}$). The strongest association was rs2288557 in the methyltransferase-like 2B (*METTL2B*) gene on chromosome 7 ($p = 0.00009$; FDR $q = 0.782$). The next two strongest associations were rs9829009 ($p = 0.0005$; FDR $q = 0.808$) in the WD repeat domain 49 (*WDR49*) gene on chromosome 14 and rs4426337 ($p = 0.0005$; FDR $q = 0.808$) in an intergenic region on chromosome 11. The 50 most significant hits are included in Table S2 in the online supplemental material.

Genome-wide association (tier 3). The genome-wide scan did not yield any significant associations. The most significant association was rs879665 in the maestro heat-like repeat family

Table 2
Associations Between A Priori Loci and Stop Signal Task Performance

Chromosome	Locus	Gene	Minor			Add		Dom	
			Missing	Allele	MAF	<i>B</i>	<i>p</i>	<i>B</i>	<i>p</i>
2	rs2229169	<i>ADRA2B</i>	1	T	0.326	0.353	0.318	0.393	0.412
5	rs37020	<i>SLC6A3</i>	16	C	0.443	0.517	0.130	0.722	0.162
5	rs460000	<i>SLC6A3</i>	0	T	0.231	0.584	0.147	0.664	0.168
11	rs1800497	<i>ANKK1</i>	0	A	0.184	-0.934	<i>0.031</i>	-0.874	0.082
11	rs6277	<i>DRD2</i>	21	G	0.467	-0.279	0.410	-0.561	0.289
12	rs1386483	<i>TPH2</i>	0	T	0.374	0.439	0.203	0.506	0.296
13	rs6313	<i>HTR2A</i>	0	A	0.423	-0.421	0.218	-1.058	<i>0.036</i>

Note. MAF = minor allele frequency; Add = additive model, Dom = dominance model. Italics indicate $p < 0.05$.

member 2A (*MROH2A*) gene on chromosome 2 ($p = 4.52\text{E-}7$). The next two strongest associations were rs11195620 and rs5787915 in intergenic regions on chromosome 10 ($p = 1.78\text{E-}6$, $p = 1.89\text{E-}6$, respectively). Figure 1 depicts the results of the GWAS using both Manhattan and Quantile-Quantile (Q-Q) plots. As can be seen in the Q-Q plots, most markers fit null expectations and no markers show evidence for a true association. Furthermore, as can be seen in the Manhattan plot, rs879665 is a lone SNP, rather than the peak among many suggestive loci, indicating an increased likelihood of it being a false positive. The 50 most significant hits are included in Table S3 in the online supplemental material.

Gene-based analyses. None of the gene-based associations were significant after FDR correction ($p < 2.64\text{E-}6$). The strongest gene-based associations were solute carrier family 16 member 10 (*SLC16A10*; $p = 0.00008$), developmental pluripotency-associated protein 3 (*DPPA3*; $p = 0.0004$), and stimulated by retinoic acid 6 (*STRA6*; $p = 0.0004$). The top 10 genes are included in Table S4 in the online supplemental material.

Discussion

This study examined genetic associations with response inhibition assessed as the ability to inhibit a motor response using the stop signal task. We used a hierarchical approach in which three tiers of SNPs were analyzed: (a) tier 1, a priori loci that have been previously associated with response inhibition on the stop signal task; (b) tier 2, HVA markers; and (c) tier 3, a genome-wide scan, followed by gene-based association analyses using the resultant p values from the GWAS. To our knowledge, this is the first study to attempt to identify genome-wide loci associated with a behavioral measure of response inhibition. Two a priori loci were nominally significantly associated with stop signal task performance: one in *HTR2A* and one in *ANKK1*. However, we discuss implications of these associations with caution given that (a) these associations did not survive correction for multiple testing; (b) we did not statistically correct for additional phenotypes ascertained in the parent study (MacKillop et al., 2016) in the current analyses; and (c) the *ANKK1* finding was in the opposite direction as previous findings. The HVA, genome-wide, and gene-based analyses yielded no statistically significant findings.

Our finding that response inhibition on the stop signal task was associated with rs6313 in *HTR2A* (serotonin 2A receptor gene) is in line with previous reports examining this SNP in relation to

response inhibition. Specifically, Jakubczyk et al. (2012) found that the minor allele of rs6313 was associated with better response inhibition on the stop signal task in a sample of alcohol-dependent individuals. Likewise, Bjork et al. (2002) found that the minor allele was associated with better response inhibition on a continuous performance task in a sample of adults with histories of depression or substance abuse. We replicated those findings here, showing that in the same dominance model, the minor allele is also associated with better response inhibition in a large sample of healthy young adults. These findings are consistent with preclinical studies demonstrating that serotonin 5-HT_{2A} receptors play an influential role in motor inhibition. For example, 5-HT_{2A} agonists impair and antagonists enhance inhibition (Anastasio et al., 2011; Fletcher, Tampakeras, Sinyard, & Higgins, 2007; Koskinen, Haapalinna, & Sirvi, 2003), and greater density of cortical 5-HT_{2A} receptors is associated with poorer response inhibition (Fink et al., 2015). It is important to note that serotonin's role in inhibition has been previously implicated in increased risk for drug abuse (Cunningham & Anastasio, 2014; Kirby, Zeeb, & Winstanley, 2011). In line with this, the minor allele of rs6313 in *HTR2A* (identified in this study as predictive of better response inhibition) was associated with less risk for relapse in alcohol-dependent individuals (Jakubczyk et al., 2013), and a recent meta-analysis reported that the minor allele was protective across studies of opioid and alcohol abuse and dependence (Cao et al., 2014). Although necessarily speculative, taken together, these findings suggest that the association between *HTR2A* and risk for drug abuse could be due in part to genetic influence on inhibitory control.

We also found an association between response inhibition on the stop signal task and rs1800497 in *ANKK1* (ankyrin repeat and kinase domain containing 1 gene), which is proximal to the *DRD2* (dopamine D₂ receptor) gene and has been associated with differences in dopamine D₂ receptors (Neville, Johnstone, & Walton, 2004). Two previous studies reported an association between the minor allele and poorer response inhibition on the stop signal task (Rodriguez-Jimenez et al., 2006; White et al., 2008). By contrast, we found the opposite association in that the minor allele was associated with better response inhibition, and, as such, this cannot be viewed as a replication of previous findings. Although it is not clear why the direction of effects differs between the current study and previous reports, it is important to note that both of the previous studies had small sample sizes ($ns < 75$). Moreover, the association between *ANKK1* and response inhibition observed here

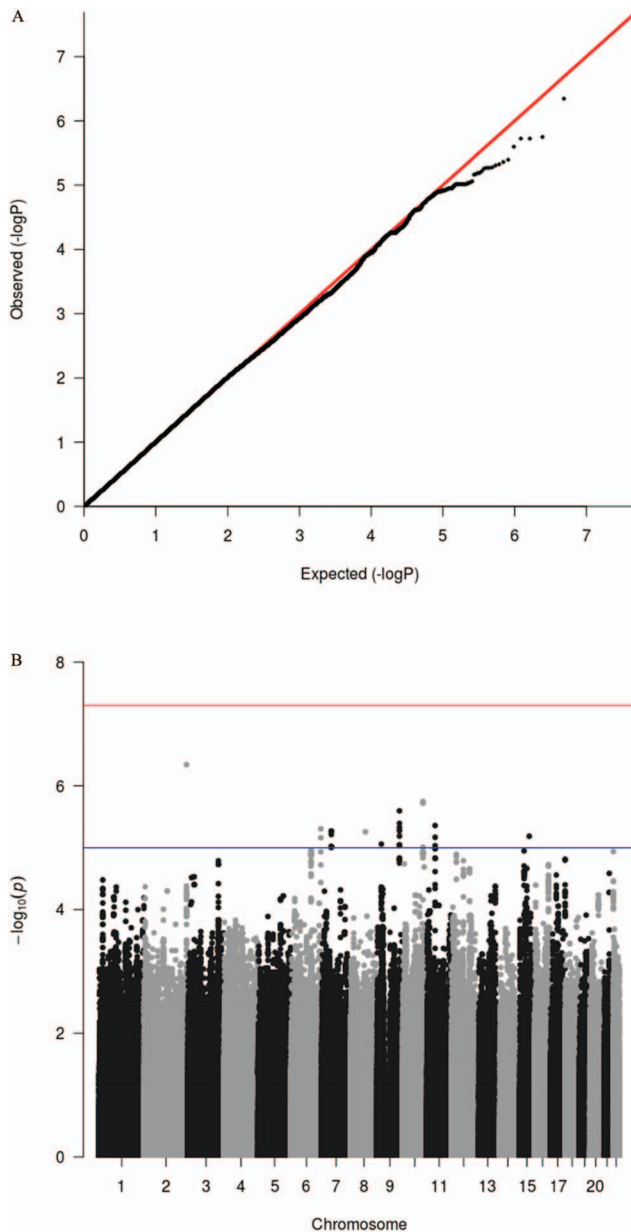


Figure 1. (A) Q-Q plot and (B) Manhattan plot of genome-wide associations for stop signal task performance. Significance values were $-\log_{10}$ transformed to display the smaller p values as larger in the figures. The Manhattan plot displays level of significance for each SNP, organized by chromosomal position from chromosomes 1–22. The blue line indicates suggestive significance ($1E-5$). No SNPs achieved GWAS ($p < 5E-8$), indicated by the red line. The Q-Q plot depicts the observed and expected p values. The genomic control inflation factor was close to 1 ($\lambda = 1.001$), suggesting no systematic bias in the distribution of p values. See the online article for the color version of this figure.

is consistent with a body of literature linking both *ANKKI* and D_2 receptor signaling to inhibitory control and, more broadly, to drug and alcohol addiction. There is a well-established link between D_2 receptor signaling and response inhibition on the stop signal task in both animals and humans (Eagle et al., 2011; Ghahremani et al.,

2012; Nandam et al., 2013; Robertson et al., 2015). In addition, as with serotonin, the link between D_2 receptors and inhibitory control is thought to play a role in risk for drug abuse (Jentsch et al., 2014; London, 2016). Because *ANKKI* has long been associated with risk for drug abuse (for reviews, see Ma, Yuan, Jiang, Cui, & Li, 2015; Wang, Simen, Arias, Lu, & Zhang, 2013), this association could also be mediated in part by genetic influence on inhibitory control.

The current study failed to replicate associations with any of the five additional SNPs (tier 1) that have been associated with response inhibition on the stop signal task in previous studies, further suggesting that candidate gene findings should be interpreted with caution. Differences in sample populations could explain some of the discrepancies in findings. Specifically, we tested only healthy young adults of European ancestry with no history of drug or alcohol dependence, whereas previous samples have comprised participants with a wide range of ages, ethnicities, and substance use. It is possible that our exclusion of heavy substance users limited variability in inhibitory control within the sample, thus reducing our power to replicate previously reported associations. It is also possible that the age range of participants (18–30 years) limited our power to detect associations given the ongoing brain maturation during this period in prefrontal regions implicated in inhibitory control (Silveri, 2012). However, as mentioned in the introduction, such failure to replicate previous findings could also be due to the potential for false positives in underpowered candidate gene studies (Duncan & Keller, 2011; Duncan et al., 2014; Hart et al., 2013). Our results might suggest that some of the previously reported associations between specific loci and stop signal task performance may be specific to certain samples (e.g., among individuals with substance use disorders) or may have indeed been false positives, although of course neither possibility is definitive by any means.

It is possible that our use of number of inhibitory errors on the modified stop signal task (as opposed to the use of stop signal reaction time [SSRT] on the traditional task) as the measure of inhibitory control limited our ability to replicate previous findings. However, we believe this is unlikely given that the task modifications were subtle, and performance on the modified task correlated strongly with performance on the traditional task. One additional limitation of the accuracy measure used in the present study is that it does not rule out the possible influence of nonspecific performance impairment. Indeed, in the present study, the accuracy in inhibiting responses was correlated with both go reaction time and go accuracy. It will be important in future studies to include measures that exclude this possibility.

Despite our careful assessment of inhibition within a comparatively large sample ($n = 934$) of healthy, nonsubstance-abusing young adults of European ancestry, we did not detect any significant HVA or genome-wide loci after implementing an FDR correction. Although clinical and psychological phenotypes are likely to be highly polygenic, with numerous loci exerting very small effects (Robinson, Wray, & Visscher, 2014), we originally expected that our use of response inhibition would be a genetically simpler construct that might be amenable to genome-wide significant hits within a relatively smaller sample. By contrast, our findings suggest that this is not the case and that large samples will also be needed for well-characterized behavioral tasks. This is consistent with the literature advising collection of much larger

samples, perhaps through consortia or other collaborative endeavors, for sufficient power to observe very-small-magnitude effects at genome-wide significance (Agrawal, Edenberg, & Gelernter, 2016).

In summary, this study further advances the understanding of genetic variation and behavioral inhibition. Specifically, findings replicated previous associations between variation in the *HTR2A* and *ANKK1* genes and inhibitory control as measured by a stop signal task. The study also highlights the potential for false positives in candidate gene studies because we failed to replicate five of seven previously reported associations between specific loci and response inhibition on the stop signal task despite our larger sample size, which should have afforded us greater power compared with the original candidate gene studies. Finally, our findings underscore the difficulty in detecting the influence of individual SNPs from large panels of tests, even when those tests are biologically informed. Future studies may benefit from combining data sets across research sites to increase sample size and from using alternative approaches to measure genetic influence.

References

- Aertgeerts, B., Buntinx, F., Bande-Knops, J., Vandermeulen, C., Roelants, M., Ansoms, S., & Fevery, J. (2000). The value of CAGE, CUGE, and AUDIT in screening for alcohol abuse and dependence among college freshmen. *Alcoholism, Clinical and Experimental Research*, 24, 53–57. <http://dx.doi.org/10.1111/j.1530-0277.2000.tb04553.x>
- Agrawal, A., Edenberg, H. J., & Gelernter, J. (2016). Meta-analyses of genome-wide association data hold new promise for addiction genetics. *Journal of Studies on Alcohol and Drugs*, 77, 676–680. <http://dx.doi.org/10.15288/jsad.2016.77.676>
- Ahn, W. Y., & Vassileva, J. (2016). Machine-learning identifies substance-specific behavioral markers for opiate and stimulant dependence. *Drug and Alcohol Dependence*, 161, 247–257. <http://dx.doi.org/10.1016/j.drugalcdep.2016.02.008>
- Anastasio, N. C., Stoffel, E. C., Fox, R. G., Bubar, M. J., Rice, K. C., Moeller, F. G., & Cunningham, K. A. (2011). Serotonin (5-hydroxytryptamine) 5-HT(2A) receptor: Association with inherent and cocaine-evoked behavioral disinhibition in rats. *Behavioural Pharmacology*, 22, 248–261. <http://dx.doi.org/10.1097/FBP.0b013e328345f90d>
- Badiani, A., Belin, D., Epstein, D., Calu, D., & Shaham, Y. (2011). Opiate versus psychostimulant addiction: The differences do matter. *Nature Reviews Neuroscience*, 12, 685–700. <http://dx.doi.org/10.1038/nrn3104>
- Baurley, J. W., Edlund, C. K., Pardamean, C. I., Conti, D. V., & Bergen, A. W. (2016). Smokescreen: A targeted genotyping array for addiction research. *BMC Genomics*, 17, 145. <http://dx.doi.org/10.1186/s12864-016-2495-7>
- Beckwith, S. W., & Czachowski, C. L. (2016). Alcohol-preferring P rats exhibit elevated motor impulsivity concomitant with operant responding and self-administration of alcohol. *Alcoholism: Clinical and Experimental Research*, 40, 1100–1110. <http://dx.doi.org/10.1111/acer.13044>
- Belin, D., Mar, A. C., Dalley, J. W., Robbins, T. W., & Everitt, B. J. (2008). High impulsivity predicts the switch to compulsive cocaine-taking. *Science*, 320, 1352–1355. <http://dx.doi.org/10.1126/science.1158136>
- Benjamini, Y., & Hochberg, Y. (1995). Controlling the false discovery rate—A practical and powerful approach to multiple testing. *Journal of the Royal Statistical Society: Series B, Methodology*, 57, 289–300.
- Bergen, A. W., Javitz, H. S., Krasnow, R., Nishita, D., Michel, M., Conti, D. V., . . . Swan, G. E. (2013). Nicotinic acetylcholine receptor variation and response to smoking cessation therapies. *Pharmacogenetics and Genomics*, 23, 94–103. <http://dx.doi.org/10.1097/FPC.0b013e32835cdabd>
- Berman, A. H., Bergman, H., Palmstierna, T., & Schlyter, F. (2005). Evaluation of the Drug Use Disorders Identification Test (DUDIT) in criminal justice and detoxification settings and in a Swedish population sample. *European Addiction Research*, 11, 22–31. <http://dx.doi.org/10.1159/000081413>
- Bevilacqua, L., & Goldman, D. (2013). Genetics of impulsive behaviour. *Philosophical Transactions of the Royal Society of London: Series B, Biological Sciences*, 368, 20120380. <http://dx.doi.org/10.1098/rstb.2012.0380>
- Bjork, J. M., Moeller, F. G., Dougherty, D. M., Swann, A. C., Machado, M. A., & Hanis, C. L. (2002). Serotonin 2a receptor T102C polymorphism and impaired impulse control. *American Journal of Medical Genetics*, 114, 336–339. <http://dx.doi.org/10.1002/ajmg.10206>
- Cao, J., Liu, X., Han, S., Zhang, C. K., Liu, Z., & Li, D. (2014). Association of the HTR2A gene with alcohol and heroin abuse. *Human Genetics*, 133, 357–365. <http://dx.doi.org/10.1007/s00439-013-1388-y>
- Chang, C. C., Chow, C. C., Tellier, L. C. A. M., Vattikuti, S., Purcell, S. M., & Lee, J. J. (2015). Second-generation PLINK: Rising to the challenge of larger and richer datasets. *GigaScience*, 4, 7. <http://dx.doi.org/10.1186/s13742-015-0047-8>
- Colzato, L. S., van den Wildenberg, W. P. M., & Hommel, B. (2013). The genetic impact (C957T-DRD2) on inhibitory control is magnified by aging. *Neuropsychologia*, 51, 1377–1381. <http://dx.doi.org/10.1016/j.neuropsychologia.2013.01.014>
- Colzato, L. S., van den Wildenberg, W. P. M., Van der Does, A. J. W., & Hommel, B. (2010). Genetic markers of striatal dopamine predict individual differences in dysfunctional, but not functional impulsivity. *Neuroscience*, 170, 782–788. <http://dx.doi.org/10.1016/j.neuroscience.2010.07.050>
- Crosbie, J., Arnold, P., Paterson, A., Swanson, J., Dupuis, A., Li, X., . . . Schachar, R. J. (2013). Response inhibition and ADHD traits: Correlates and heritability in a community sample. *Journal of Abnormal Child Psychology*, 41, 497–507. <http://dx.doi.org/10.1007/s10802-012-9693-9>
- Crunelle, C. L., Veltman, D. J., van Emmerik-van Oortmerssen, K., Booij, J., & van den Brink, W. (2013). Impulsivity in adult ADHD patients with and without cocaine dependence. *Drug and Alcohol Dependence*, 129, 18–24. <http://dx.doi.org/10.1016/j.drugalcdep.2012.09.006>
- Cummins, T. D. R., Hawi, Z., Hocking, J., Strudwick, M., Hester, R., Garavan, H., . . . Bellgrove, M. A. (2012). Dopamine transporter genotype predicts behavioural and neural measures of response inhibition. *Molecular Psychiatry*, 17, 1086–1092. <http://dx.doi.org/10.1038/mp.2011.104>
- Cunningham, K. A., & Anastasio, N. C. (2014). Serotonin at the nexus of impulsivity and cue reactivity in cocaine addiction. *Neuropharmacology*, 76, 460–478. <http://dx.doi.org/10.1016/j.neuropharm.2013.06.030>
- Dalley, J. W., Fryer, T. D., Brichard, L., Robinson, E. S., Theobald, D. E., Lääne, K., . . . Robbins, T. W. (2007). Nucleus accumbens D2/3 receptors predict trait impulsivity and cocaine reinforcement. *Science*, 315, 1267–1270. <http://dx.doi.org/10.1126/science.1137073>
- de Wit, H. (2009). Impulsivity as a determinant and consequence of drug use: A review of underlying processes. *Addiction Biology*, 14, 22–31. <http://dx.doi.org/10.1111/j.1369-1600.2008.00129.x>
- Diergaarde, L., Pattij, T., Poortvliet, I., Hogenboom, F., de Vries, W., Schoffeleer, A. N., & De Vries, T. J. (2008). Impulsive choice and impulsive action predict vulnerability to distinct stages of nicotine seeking in rats. *Biological Psychiatry*, 63, 301–308. <http://dx.doi.org/10.1016/j.biopsych.2007.07.011>
- Duncan, L. E., & Keller, M. C. (2011). A critical review of the first 10 years of candidate gene-by-environment interaction research in psychiatry. *The American Journal of Psychiatry*, 168, 1041–1049. <http://dx.doi.org/10.1176/appi.ajp.2011.11020191>
- Duncan, L. E., Pollastri, A. R., & Smoller, J. W. (2014). Mind the gap: Why many geneticists and psychological scientists have discrepant

- views about gene-environment interaction (G×E) research. *American Psychologist*, 69, 249–268. <http://dx.doi.org/10.1037/a0036320>
- Eagle, D. M., Wong, J. C. K., Allan, M. E., Mar, A. C., Theobald, D. E., & Robbins, T. W. (2011). Contrasting roles for dopamine D1 and D2 receptor subtypes in the dorsomedial striatum but not the nucleus accumbens core during behavioral inhibition in the stop-signal task in rats. *The Journal of Neuroscience*, 31, 7349–7356. <http://dx.doi.org/10.1523/JNEUROSCI.6182-10.2011>
- Feng, S., Wang, S., Chen, C. C., & Lan, L. (2011). GWAPower: A statistical power calculation software for genome-wide association studies with quantitative traits. *BMC Genetics*, 12, 12. <http://dx.doi.org/10.1186/1471-2156-12-12>
- Fernie, G., Peeters, M., Gullo, M. J., Christiansen, P., Cole, J. C., Sumnall, H., & Field, M. (2013). Multiple behavioural impulsivity tasks predict prospective alcohol involvement in adolescents. *Addiction*, 108, 1916–1923. <http://dx.doi.org/10.1111/add.12283>
- Fillmore, M. T., & Rush, C. R. (2002). Impaired inhibitory control of behavior in chronic cocaine users. *Drug and Alcohol Dependence*, 66, 265–273. [http://dx.doi.org/10.1016/S0376-8716\(01\)00206-X](http://dx.doi.org/10.1016/S0376-8716(01)00206-X)
- Fink, L. H. L., Anastasio, N. C., Fox, R. G., Rice, K. C., Moeller, F. G., & Cunningham, K. A. (2015). Individual differences in impulsive action reflect variation in the cortical serotonin 5-HT_{2A} receptor system. *Neuropsychopharmacology*, 40, 1957–1968. <http://dx.doi.org/10.1038/npp.2015.46>
- Fletcher, P. J., Tampakeras, M., Sinyard, J., & Higgins, G. A. (2007). Opposing effects of 5-HT(2A) and 5-HT(2C) receptor antagonists in the rat and mouse on premature responding in the five-choice serial reaction time test. *Psychopharmacology*, 195, 223–234. <http://dx.doi.org/10.1007/s00213-007-0891-z>
- Gagne, J. R., & Saudino, K. J. (2010). Wait for it! A twin study of inhibitory control in early childhood. *Behavior Genetics*, 40, 327–337. <http://dx.doi.org/10.1007/s10519-009-9316-6>
- Ghahremani, D. G., Lee, B., Robertson, C. L., Tabibnia, G., Morgan, A. T., De Shetler, N., . . . London, E. D. (2012). Striatal dopamine D(2)/D(3) receptors mediate response inhibition and related activity in frontostriatal neural circuitry in humans. *The Journal of Neuroscience*, 32, 7316–7324. <http://dx.doi.org/10.1523/JNEUROSCI.4284-11.2012>
- Goldstein, R. Z., & Volkow, N. D. (2011). Dysfunction of the prefrontal cortex in addiction: Neuroimaging findings and clinical implications. *Nature Reviews Neuroscience*, 12, 652–669. <http://dx.doi.org/10.1038/nrn3119>
- Hart, A. B., de Wit, H., & Palmer, A. A. (2013). Candidate gene studies of a promising intermediate phenotype: Failure to replicate. *Neuropsychopharmacology*, 38, 802–816. <http://dx.doi.org/10.1038/npp.2012.245>
- Hecker, J., Maaser, A., Prokopenko, D., Fier, H. L., & Lange, C. (2017). Reporting correct *p* values in VEGAS analyses. *Twin Research and Human Genetics*, 20, 257–259. <http://dx.doi.org/10.1017/thg.2017.16>
- Howie, B. N., Donnelly, P., & Marchini, J. (2009). A flexible and accurate genotype imputation method for the next generation of genome-wide association studies. *PLoS Genetics*, 5, e1000529. <http://dx.doi.org/10.1371/journal.pgen.1000529>
- Hutchison, K. E., Stallings, M., McGeary, J., & Bryan, A. (2004). Population stratification in the candidate gene study: Fatal threat or red herring? *Psychological Bulletin*, 130, 66–79. <http://dx.doi.org/10.1037/0033-2909.130.1.66>
- Iacono, W. G., Carlson, S. R., Taylor, J., Elkins, I. J., & McGue, M. (1999). Behavioral disinhibition and the development of substance-use disorders: Findings from the Minnesota Twin Family Study. *Development and Psychopathology*, 11, 869–900. <http://dx.doi.org/10.1017/S0954579499002369>
- Jakubczyk, A., Klimkiewicz, A., Kopera, M., Krasowska, A., Wrzosek, M., Matsumoto, H., . . . Wojnar, M. (2013). The CC genotype in the T102C HTR2A polymorphism predicts relapse in individuals after alcohol treatment. *Journal of Psychiatric Research*, 47, 527–533. <http://dx.doi.org/10.1016/j.jpsychires.2012.12.004>
- Jakubczyk, A., Wrzosek, M., Lukaszewicz, J., Sadowska-Mazuryk, J., Matsumoto, H., Sliwerska, E., . . . Wojnar, M. (2012). The CC genotype in HTR2A T102C polymorphism is associated with behavioral impulsivity in alcohol-dependent patients. *Journal of Psychiatric Research*, 46, 44–49. <http://dx.doi.org/10.1016/j.jpsychires.2011.09.001>
- Jentsch, J. D., Ashenurst, J. R., Cervantes, M. C., Groman, S. M., James, A. S., & Pennington, Z. T. (2014). Dissecting impulsivity and its relationships to drug addictions. *Annals of the New York Academy of Sciences*, 1327, 1–26.
- Jentsch, J. D., & Taylor, J. R. (1999). Impulsivity resulting from frontostriatal dysfunction in drug abuse: Implications for the control of behavior by reward-related stimuli. *Psychopharmacology*, 146, 373–390. <http://dx.doi.org/10.1007/PL00005483>
- Joos, L., Schmaal, L., Goudriaan, A. E., Fransen, E., Van den Brink, W., Sabbe, B. G., & Dom, G. (2013). Age of onset and neuropsychological functioning in alcohol dependent inpatients. *Alcoholism: Clinical and Experimental Research*, 37, 407–416. <http://dx.doi.org/10.1111/j.1530-0277.2012.01949.x>
- Kessler, R. C., Adler, L., Ames, M., Demler, O., Faraone, S., Hiripi, E., . . . Walters, E. E. (2005). The World Health Organization Adult ADHD Self-Report Scale (ASRS): A short screening scale for use in the general population. *Psychological Medicine*, 35, 245–256. <http://dx.doi.org/10.1017/S0033291704002892>
- Kirby, L. G., Zeeb, F. D., & Winstanley, C. A. (2011). Contributions of serotonin in addiction vulnerability. *Neuropharmacology*, 61, 421–432. <http://dx.doi.org/10.1016/j.neuropharm.2011.03.022>
- Koskinen, T., Haapalinna, A., & Sirvi, J. (2003). Alpha-adrenoceptor-mediated modulation of 5-HT₂ receptor agonist induced impulsive responding in a 5-choice serial reaction time task. *Pharmacology & Toxicology*, 92, 214–225. <http://dx.doi.org/10.1034/j.1600-0773.2003.920504.x>
- Lawrence, A. J., Luty, J., Bogdan, N. A., Sahakian, B. J., & Clark, L. (2009). Impulsivity and response inhibition in alcohol dependence and problem gambling. *Psychopharmacology*, 207, 163–172. <http://dx.doi.org/10.1007/s00213-009-1645-x>
- Lei, X., Chen, C., He, Q., Moyzis, R., Xue, G., Chen, C., . . . Dong, Q. (2012). Haplotype polymorphism in the alpha-2B-adrenergic receptor gene influences response inhibition in a large Chinese sample. *Neuropsychopharmacology*, 37, 1115–1121. <http://dx.doi.org/10.1038/npp.2011.266>
- Lin, W. Y., & Lee, W. C. (2012). Improving power of genome-wide association studies with weighted false discovery rate control and prioritized subset analysis. *PLoS ONE*, 7, e33716. <http://dx.doi.org/10.1371/journal.pone.0033716>
- Logan, G. D., Schachar, R. J., & Tannock, R. (1997). Impulsivity and inhibitory control. *Psychological Science*, 8, 60–64. <http://dx.doi.org/10.1111/j.1467-9280.1997.tb00545.x>
- London, E. D. (2016). Impulsivity, stimulant abuse, and dopamine receptor signaling. *Advances in Pharmacology*, 76, 67–84. <http://dx.doi.org/10.1016/bs.apha.2016.01.002>
- Ma, Y., Yuan, W., Jiang, X., Cui, W. Y., & Li, M. D. (2015). Updated findings of the association and functional studies of DRD2/ANKK1 variants with addictions. *Molecular Neurobiology*, 51, 281–299. <http://dx.doi.org/10.1007/s12035-014-8826-2>
- MacKillop, J., Weafer, J. C., Gray, J., Oshri, A., Palmer, A., & de Wit, H. (2016). The latent structure of impulsivity: Impulsive choice, impulsive action, and impulsive personality traits. *Psychopharmacology*, 233, 3361–3370. <http://dx.doi.org/10.1007/s00213-016-4372-0>
- Mishra, A., & Macgregor, S. (2015). VEGAS2: Software for more flexible gene-based testing. *Twin Research and Human Genetics*, 18, 86–91. <http://dx.doi.org/10.1017/thg.2014.79>

- Moreno, M., Estevez, A. F., Zaldivar, F., Montes, J. M., Gutiérrez-Ferre, V. E., Esteban, L., . . . Flores, P. (2012). Impulsivity differences in recreational cannabis users and binge drinkers in a university population. *Drug and Alcohol Dependence*, 124, 355–362. <http://dx.doi.org/10.1016/j.drugalcdep.2012.02.011>
- Nandam, L. S., Hester, R., Wagner, J., Dean, A. J., Messer, C., Honeysett, A., . . . Bellgrove, M. A. (2013). Dopamine D(2) receptor modulation of human response inhibition and error awareness. *Journal of Cognitive Neuroscience*, 25, 649–656. http://dx.doi.org/10.1162/jocn_a_00327
- Neville, M. J., Johnstone, E. C., & Walton, R. T. (2004). Identification and characterization of ANKK1: A novel kinase gene closely linked to DRD2 on chromosome band 11q23.1. *Human Mutation*, 23, 540–545. <http://dx.doi.org/10.1002/humu.20039>
- Nigg, J. T., Wong, M. M., Martel, M. M., Jester, J. M., Puttler, L. I., Glass, J. M., . . . Zucker, R. A. (2006). Poor response inhibition as a predictor of problem drinking and illicit drug use in adolescents at risk for alcoholism and other substance use disorders. *Journal of the American Academy of Child & Adolescent Psychiatry*, 45, 468–475. <http://dx.doi.org/10.1097/01.chi.0000199028.76452.a9>
- Park, J. H., Wacholder, S., Gail, M. H., Peters, U., Jacobs, K. B., Chanock, S. J., & Chatterjee, N. (2010). Estimation of effect size distribution from genome-wide association studies and implications for future discoveries. *Nature Genetics*, 42, 570–575. <http://dx.doi.org/10.1038/ng.610>
- Pe'er, I., Yelensky, R., Altshuler, D., & Daly, M. J. (2008). Estimation of the multiple testing burden for genomewide association studies of nearly all common variants. *Genetic Epidemiology*, 32, 381–385. <http://dx.doi.org/10.1002/gepi.20303>
- Perry, J. L., & Carroll, M. E. (2008). The role of impulsive behavior in drug abuse. *Psychopharmacology*, 200, 1–26. <http://dx.doi.org/10.1007/s00213-008-1173-0>
- Price, A. L., Patterson, N. J., Plenge, R. M., Weinblatt, M. E., Shadick, N. A., & Reich, D. (2006). Principal components analysis corrects for stratification in genome-wide association studies. *Nature Genetics*, 38, 904–909. <http://dx.doi.org/10.1038/ng1847>
- Robertson, C. L., Ishibashi, K., Mandelkern, M. A., Brown, A. K., Ghahremani, D. G., Sabb, F., . . . London, E. D. (2015). Striatal D1- and D2-type dopamine receptors are linked to motor response inhibition in human subjects. *The Journal of Neuroscience*, 35, 5990–5997. <http://dx.doi.org/10.1523/JNEUROSCI.4850-14.2015>
- Robinson, M. R., Wray, N. R., & Visscher, P. M. (2014). Explaining additional genetic variation in complex traits. *Trends in Genetics*, 30, 124–132. <http://dx.doi.org/10.1016/j.tig.2014.02.003>
- Rodríguez-Jiménez, R., Avila, C., Ponce, G., Ibáñez, M. I., Rubio, G., Jiménez-Arriero, M. A., . . . Palomo, T. (2006). The Taq1A polymorphism linked to the DRD2 gene is related to lower attention and less inhibitory control in alcoholic patients. *European Psychiatry*, 21, 66–69. <http://dx.doi.org/10.1016/j.eurpsy.2005.05.010>
- Rubio, G., Jiménez, M., Rodríguez-Jiménez, R., Martínez, I., Avila, C., Ferre, F., . . . Palomo, T. (2008). The role of behavioral impulsivity in the development of alcohol dependence: A 4-year follow-up study. *Alcoholism: Clinical and Experimental Research*, 32, 1681–1687. <http://dx.doi.org/10.1111/j.1530-0277.2008.00746.x>
- Saccone, S. F., Hinrichs, A. L., Saccone, N. L., Chase, G. A., Konvicka, K., Madden, P. A., . . . Bierut, L. J. (2007). Cholinergic nicotinic receptor genes implicated in a nicotine dependence association study targeting 348 candidate genes with 3713 SNPs. *Human Molecular Genetics*, 16, 36–49. <http://dx.doi.org/10.1093/hmg/ddl438>
- Saunders, J. B., Aasland, O. G., Babor, T. F., de la Fuente, J. R., & Grant, M. (1993). Development of the Alcohol Use Disorders Identification Test (AUDIT): WHO collaborative project on early detection of persons with harmful alcohol consumption—II. *Addiction*, 88, 791–804. <http://dx.doi.org/10.1111/j.1360-0443.1993.tb02093.x>
- Schachar, R. J., Forget-Dubois, N., Dionne, G., Boivin, M., & Robaey, P. (2011). Heritability of response inhibition in children. *Journal of the International Neuropsychological Society*, 17, 238–247. <http://dx.doi.org/10.1017/S1355617710001463>
- Sher, K. J., Bartholow, B. D., & Wood, M. D. (2000). Personality and substance use disorders: A prospective study. *Journal of Consulting and Clinical Psychology*, 68, 818–829. <http://dx.doi.org/10.1037/0022-006X.68.5.818>
- Silveri, M. M. (2012). Adolescent brain development and underage drinking in the United States: Identifying risks of alcohol use in college populations. *Harvard Review of Psychiatry*, 20, 189–200. <http://dx.doi.org/10.3109/10673229.2012.714642>
- Stoltenberg, S. F., Glass, J. M., Chermack, S. T., Flynn, H. A., Li, S., Weston, M. E., & Burmeister, M. (2006). Possible association between response inhibition and a variant in the brain-expressed tryptophan hydroxylase-2 gene. *Psychiatric Genetics*, 16, 35–38. <http://dx.doi.org/10.1097/01.ypg.0000176528.30362.34>
- Substance Abuse and Mental Health Services Administration. (2014). *Results from the 2013 National Survey on Drug Use and Health: Summary of national findings*. Rockville, MD: Author.
- Tarter, R. E., Kirisci, L., Reynolds, M., & Mezzich, A. (2004). Neurobehavior disinhibition in childhood predicts suicide potential and substance use disorder by young adulthood. *Drug and Alcohol Dependence*, 76, S45–S52. <http://dx.doi.org/10.1016/j.drugalcdep.2004.08.006>
- The 1000 Genomes Project Consortium. (2015). A global reference for human genetic variation. *Nature*, 526, 68–74. <http://dx.doi.org/10.1038/nature15393>
- Visscher, P. M., Wray, N. R., Zhang, Q., Sklar, P., McCarthy, M. I., Brown, M. A., & Yang, J. (2017). 10 years of GWAS discovery: Biology, function, and translation. *American Journal of Human Genetics*, 101, 5–22. <http://dx.doi.org/10.1016/j.ajhg.2017.06.005>
- Wang, F., Simen, A., Arias, A., Lu, Q. W., & Zhang, H. (2013). A large-scale meta-analysis of the association between the ANKK1/DRD2 Taq1A polymorphism and alcohol dependence. *Human Genetics*, 132, 347–358. <http://dx.doi.org/10.1007/s00439-012-1251-6>
- Weafer, J., Mitchell, S. H., & de Wit, H. (2014). Recent translational findings on impulsivity in relation to drug abuse. *Current Addiction Reports*, 1, 289–300. <http://dx.doi.org/10.1007/s40429-014-0035-6>
- White, M. J., Morris, C. P., Lawford, B. R., & Young, R. M. (2008). Behavioral phenotypes of impulsivity related to the ANKK1 gene are independent of an acute stressor. *Behavioral and Brain Functions*, 4, 54. <http://dx.doi.org/10.1186/1744-9081-4-54>
- Wojcik, G. L., Kao, W. H. L., & Duggal, P. (2015). Relative performance of gene- and pathway-level methods as secondary analyses for genome-wide association studies. *BMC Genetics*, 16, 34. <http://dx.doi.org/10.1186/s12863-015-0191-2>
- Yang, J., Lee, S. H., Goddard, M. E., & Visscher, P. M. (2011). GCTA: A tool for genome-wide complex trait analysis. *American Journal of Human Genetics*, 88, 76–82. <http://dx.doi.org/10.1016/j.ajhg.2010.11.011>

Received June 16, 2017

Revision received August 9, 2017

Accepted September 6, 2017 ■