

# UCLA

## UCLA Previously Published Works

### Title

Comprehensive mutational analysis of primary and relapse acute promyelocytic leukemia

### Permalink

<https://escholarship.org/uc/item/96z2x8xs>

### Journal

Leukemia, 30(8)

### ISSN

0887-6924

### Authors

Madan, V

Shyamsunder, P

Han, L

et al.

### Publication Date

2016-08-01

### DOI

10.1038/leu.2016.69

### Copyright Information

This work is made available under the terms of a Creative Commons Attribution-NonCommercial-ShareAlike License, available at

<https://creativecommons.org/licenses/by-nc-sa/4.0/>

Peer reviewed

## ORIGINAL ARTICLE

## Comprehensive mutational analysis of primary and relapse acute promyelocytic leukemia

V Madan<sup>1</sup>, P Shyamsunder<sup>1,23</sup>, L Han<sup>1,2,23</sup>, A Mayakonda<sup>1,23</sup>, Y Nagata<sup>3</sup>, J Sundaresan<sup>1</sup>, D Kanojia<sup>1</sup>, K Yoshida<sup>3</sup>, S Ganesan<sup>4</sup>, N Hattori<sup>1</sup>, N Fulton<sup>5</sup>, K-T Tan<sup>1</sup>, T Alpermann<sup>6</sup>, M-C Kuo<sup>7</sup>, S Rostami<sup>8</sup>, J Matthews<sup>9</sup>, M Sanada<sup>3</sup>, L-Z Liu<sup>1</sup>, Y Shiraiishi<sup>10</sup>, S Miyano<sup>10</sup>, E Chendamarai<sup>4</sup>, H-A Hou<sup>11</sup>, G Malnassy<sup>5</sup>, T Ma<sup>12</sup>, M Garg<sup>1</sup>, L-W Ding<sup>1</sup>, Q-Y Sun<sup>1</sup>, W Chien<sup>1</sup>, T Ikezoe<sup>13</sup>, M Lill<sup>14</sup>, A Biondi<sup>15</sup>, RA Larson<sup>16</sup>, BL Powell<sup>17</sup>, M Lübbert<sup>12</sup>, WJ Chng<sup>1,2,18</sup>, H-F Tien<sup>11</sup>, M Heuser<sup>19</sup>, A Ganser<sup>19</sup>, M Koren-Michowitz<sup>20,21</sup>, SM Kornblau<sup>9</sup>, HM Kantarjian<sup>9</sup>, D Nowak<sup>22</sup>, W-K Hofmann<sup>22</sup>, H Yang<sup>1</sup>, W Stock<sup>5</sup>, A Ghavamzadeh<sup>8</sup>, K Alimoghaddam<sup>8</sup>, T Haferlach<sup>6</sup>, S Ogawa<sup>3</sup>, L-Y Shih<sup>7</sup>, V Mathews<sup>4,24</sup> and HP Koeffler<sup>1,14,18,24</sup>

Acute promyelocytic leukemia (APL) is a subtype of myeloid leukemia characterized by differentiation block at the promyelocyte stage. Besides the presence of chromosomal rearrangement t(15;17), leading to the formation of PML-RARA (promyelocytic leukemia-retinoic acid receptor alpha) fusion, other genetic alterations have also been implicated in APL. Here, we performed comprehensive mutational analysis of primary and relapse APL to identify somatic alterations, which cooperate with PML-RARA in the pathogenesis of APL. We explored the mutational landscape using whole-exome ( $n = 12$ ) and subsequent targeted sequencing of 398 genes in 153 primary and 69 relapse APL. Both primary and relapse APL harbored an average of eight non-silent somatic mutations per exome. We observed recurrent alterations of *FLT3*, *WT1*, *NRAS* and *KRAS* in the newly diagnosed APL, whereas mutations in other genes commonly mutated in myeloid leukemia were rarely detected. The molecular signature of APL relapse was characterized by emergence of frequent mutations in *PML* and *RARA* genes. Our sequencing data also demonstrates incidence of loss-of-function mutations in previously unidentified genes, *ARID1B* and *ARID1A*, both of which encode for key components of the SWI/SNF complex. We show that knockdown of *ARID1B* in APL cell line, NB4, results in large-scale activation of gene expression and reduced *in vitro* differentiation potential.

*Leukemia* (2016) 30, 1672–1681; doi:10.1038/leu.2016.69

## INTRODUCTION

Acute promyelocytic leukemia (APL) is a distinct subtype of myeloid leukemia characterized by differentiation block resulting in accumulation of leukemic promyelocytes in the bone marrow. The disease is defined by a single genetic alteration involving chromosomal translocation 15;17, leading to the formation of oncogenic fusion protein PML-RARA (promyelocytic leukemia-retinoic acid receptor alpha).<sup>1–3</sup> A minority of APL cases (< 5%) harbor fusion of *RARA* gene with other partners including *PLZF*,

*NPM1*, *NUMA1* and *STAT5B*.<sup>4,5</sup> Although the translocations involving *RARA* are a constant event in APL, additional genetic events have been identified, including somatic alterations of *FLT3* and *NRAS* genes.<sup>6,7</sup> Moreover, expression of PML-RARA in mice is associated with long latency of onset of disease and variable penetrance.<sup>8–11</sup> This suggests that secondary genetic abnormalities contribute to the pathogenesis of APL. Sequencing of a mouse APL genome revealed recurrent mutations in *Jak1* and deletions comprising *Kdm6a* gene.<sup>12</sup> Previous next-generation sequencing

<sup>1</sup>Cancer Science Institute of Singapore, National University of Singapore, Singapore, Singapore; <sup>2</sup>Department of Medicine, Yong Loo Lin School of Medicine, National University of Singapore, Singapore, Singapore; <sup>3</sup>Department of Pathology and Tumor Biology, Graduate School of Medicine, Kyoto University, Kyoto, Japan; <sup>4</sup>Department of Haematology, Christian Medical College, Vellore, India; <sup>5</sup>Section of Hematology/Oncology, University of Chicago, Chicago, IL, USA; <sup>6</sup>Munich Leukemia Laboratory (MLL), Munich, Germany; <sup>7</sup>Division of Hematology-Oncology, Department of Internal Medicine, Chang Gung Memorial Hospital, Chang Gung University, Taoyuan, Taiwan; <sup>8</sup>Hematology-Oncology and Stem Cell Transplantation Research Center, Tehran University of Medical Sciences, Tehran, Iran; <sup>9</sup>Section of Molecular Hematology and Therapy, Department of Leukemia, The University of Texas MD Anderson Cancer Center, Houston, TX, USA; <sup>10</sup>Laboratory of DNA Information Analysis, Human Genome Center, Institute of Medical Science, The University of Tokyo, Tokyo, Japan; <sup>11</sup>Department of Internal Medicine, National Taiwan University, Medical College and Hospital, Taipei, Taiwan; <sup>12</sup>Division of Hematology, Oncology and Stem Cell Transplantation, Department of Internal Medicine, University of Freiburg Medical Center, Freiburg, Germany; <sup>13</sup>Department of Hematology and Respiratory Medicine, Kochi Medical School, Kochi University, Nankoku, Kochi, Japan; <sup>14</sup>Cedars-Sinai Medical Center, Division of Hematology/Oncology, UCLA School of Medicine, Los Angeles, CA, USA; <sup>15</sup>Paediatric Haematology-Oncology Department and 'Tettamanti' Research Centre, Milano-Bicocca University, 'Fondazione MBBM', San Gerardo Hospital, Monza, Italy; <sup>16</sup>Department of Medicine, University of Chicago Comprehensive Cancer Center, Chicago, IL, USA; <sup>17</sup>Department of Internal Medicine, Section on Hematology and Oncology, Comprehensive Cancer Center of Wake Forest University, Winston-Salem, NC, USA; <sup>18</sup>Department of Hematology-Oncology, National University Cancer Institute of Singapore (NCIS), The National University Health System (NUHS), Singapore, Singapore; <sup>19</sup>Department of Hematology, Hemostasis, Oncology, and Stem Cell Transplantation, Hannover Medical School, Hannover, Germany; <sup>20</sup>Sackler Faculty of Medicine, Tel Aviv University, Tel Aviv, Israel; <sup>21</sup>Division of Hematology and Bone Marrow Transplantation, Sheba Medical Center, Tel Hashomer, Israel and <sup>22</sup>Department of Hematology and Oncology, University Hospital Mannheim, Medical Faculty Mannheim of the University of Heidelberg, Mannheim, Germany. Correspondence: Dr V Madan, Cancer Science Institute of Singapore, National University of Singapore, 14 Medical Drive, 13-01, Singapore 117599, Singapore.

E-mail: csivm@nus.edu.sg

<sup>23</sup>These authors contributed equally to this work.

<sup>24</sup>These authors share senior authorship.

Received 1 December 2015; revised 12 February 2016; accepted 15 March 2016; accepted article preview online 11 April 2016; advance online publication, 6 May 2016

studies, which have aimed to identify cooperating mutations in APL, were limited by either small sample size<sup>13,14</sup> or focus on newly diagnosed APL.<sup>7</sup>

Targeted therapy with all-*trans* retinoic acid (ATRA) and arsenic trioxide (ATO) have revolutionized the treatment of APL in the past three decades.<sup>15,16</sup> Recent advances have included high efficacy of ATO as a frontline agent in newly diagnosed APL<sup>17–20</sup> and high rates of cure and shorter time to remission observed with the combination of ATRA and ATO.<sup>21,22</sup> Both ATRA and ATO target PML-RARA fusion protein and trigger its degradation by non-overlapping mechanisms, leading to restoration of normal retinoid signaling.<sup>15,23</sup> Despite the remarkable improvement in the treatment outcome in APL, a number of resistance-related treatment failures and relapses are observed in both ATRA- and ATO-treated APL.<sup>17–20,24–26</sup> Somatic mutations of *RARA* and *PML* genes associated with treatment resistance have been reported in APL relapse.<sup>27–32</sup> However, landscape of genetic aberrations acquired at relapse following these two discrete treatment regimens has not been systematically examined.

In this study, whole-exome and targeted exome sequencing of a large APL cohort was used to uncover mutational spectrum both at initial diagnosis and relapse. Samples from 212 APL cases (comprising 30 primary/relapse pair) including relapses arising subsequent to either ATRA or ATO treatment were analyzed. A mutational signature distinctive from other myeloid leukemias was identified and recurrent mutations of SWI/SNF members *ARID1A* and *ARID1B* were discovered. Sequencing data demonstrated that APL relapse is characterized by acquisition of frequent alterations in *PML* and *RARA* genes, specifically in ATO- and ATRA-treated cases, respectively. Our experiments also demonstrate that silencing of *ARID1B* leads to impaired differentiation of NB4 cells in response to ATRA.

## MATERIALS AND METHODS

### Sample collection and genomic DNA extraction

Genomic DNA or frozen cell pellets from disease/remission stages were obtained from various institutes and hospitals. Informed consent was obtained in accordance with the Declaration of Helsinki and approved by the Institutional Review Board of respective institutes. Genomic DNA was extracted from cell pellets using DNeasy Blood and Tissue Kit (Qiagen, Valencia, CA, USA). DNA was quantified using Qubit Fluorometer (Life Technologies, Carlsbad, CA, USA) and DNA integrity was assessed by agarose gel electrophoresis. DNA was amplified using REPLI-g UltraFast Mini Kit (Qiagen) for samples with insufficient quantity. DNA was sheared using Covaris instrument (Woburn, MA, USA) and assessed on 2100 Bioanalyzer (Agilent, Santa Clara, CA, USA) before library preparation.

### Whole-exome and targeted capture sequencing

For whole-exome sequencing, DNA libraries were prepared using SureSelect Human All Exon (50 Mb) Kit (Agilent), as per the manufacturer's instructions. For targeted capture library, customized RNA baits were designed to capture exons of 398 genes. Libraries were prepared using SureSelect XT2 Target Enrichment System (Agilent) for Illumina Multiplexed Sequencing and sequenced on HiSeq 2000 platform (Illumina, San Diego, CA, USA).

### Somatic variant discovery and validation

Paired-end reads of 100 bp were aligned to hg19 reference genome using *bwa mem* (<http://arxiv.org/abs/1303.3997v2>) in default mode. Duplicates were marked with *Samblaster*.<sup>33</sup> Resulting bam files were further processed according to Genome Analysis Toolkit (GATK) best practices ([https://www.broadinstitute.org/gatk/guide/bp\\_step.php?p=1](https://www.broadinstitute.org/gatk/guide/bp_step.php?p=1)), by performing Indel Realignment and Base Quality Recalibration. Minimum mapping quality of 15 was considered for variant calling. Somatic variants were called using two methods: *ebCall*<sup>34</sup> and *VarScan2* (version 2.3.8).<sup>35</sup> Mutations supported by either <5 reads or those supported by reads in only one direction were excluded. Also, variants with variant allele frequencies <0.05 were disregarded. Processed somatic variants were later filtered for false positives

using *varscan2* *fpfilter* command. Final confident variants were annotated using *annovar* and *oncotator*. Commonly found SNPs in general population were filtered out using dbSNP135, 1000 Genomes and our in-house SNP databases, while retaining the clinically associated variants. For samples without germline samples, we retained variants that passed the criteria outlined in Supplementary Figure S1. Oncoplots were drawn using *mafTools* (<https://github.com/PoisonAlien/mafTools>) and *ComplexHeatmap* bioconductor package. Clonality analysis was carried out using *sciClone*.<sup>36</sup> Mutual exclusion relationships between frequently mutated genes were assessed by Mutation-Relation Test.<sup>37</sup> All somatic mutations reported in this study were validated by Sanger sequencing. The sequencing data have been deposited in the NCBI Sequence Read Archive under accession code SRP070515.

### Generation of ARID1B knockdown cell lines

Short hairpin (sh) RNA sequences were cloned into *AgeI/EcoRI* sites of pLKO.1 lentiviral vector (Sigma, St Louis, MO, USA) and viral particles were generated by transfection in 293T cells, as described previously.<sup>38</sup> Viral supernatant was collected 48 and 72 h after transfection, and used to transduce NB4 cells (provided by Dr Wee Joo Chng, Singapore) two times, 24 h apart. Cells were selected in puromycin to generate stably knockdown cell lines. The target sequence for human ARID1B sh2 and sh3 are 5'-GCAGGACATGTACAACCAAAG-3' and 5'-GCCGAATTACAAACGCCATAT-3', respectively.

## RESULTS

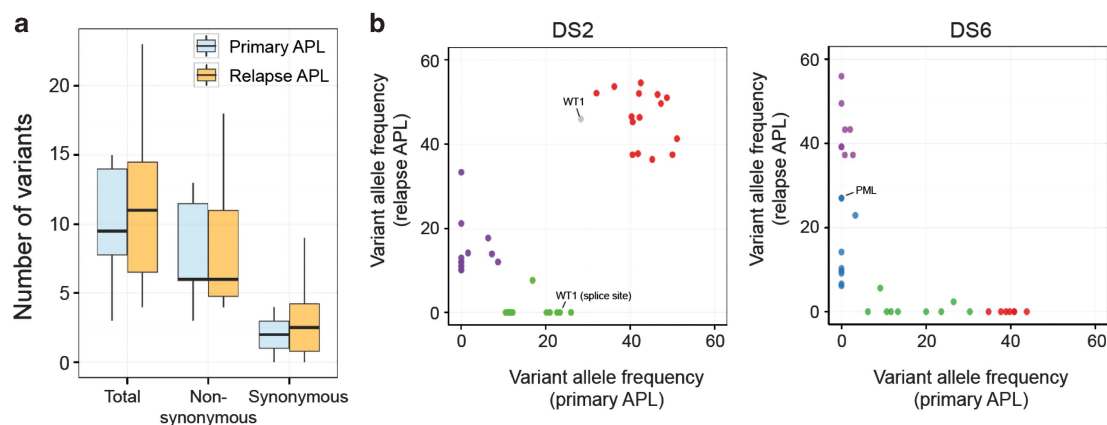
### Analysis of APL exomes at diagnosis and relapse

Whole-exome sequencing was used to characterize the genetic alterations in 12 primary diagnosis APL with eight matched relapse samples (Table 1 and Supplementary Table S1). Complete remission samples that were negative for *PML-RARA* fusion allele were used as germline control. We achieved a mean depth of 117x (range 79–159x) and an average 81% of nucleotides were covered by at least 20 reads (Supplementary Figure S2). We validated a total of 115 somatic non-silent mutations in 109 genes using Sanger sequencing (Supplementary Table S2). We observed that the average number of nonsynonymous and synonymous mutations at relapse remained unchanged compared with the initial diagnosis (two-tailed Student's *t*-test) (Figure 1a). Recurrent

**Table 1.** Dx and Rel APL samples sequenced in this study

Number of samples	Paired Dx		
	+Rel	Unpaired Dx	Unpaired Rel
Dx	165 (147)		
Rel	77 (40)		
Total	242 (187)		
<i>Sample specifics</i>			
Discovery cohort (whole exome)	8 (8)	4 (4)	0
Frequency cohort (targeted exome)	22 (14)	131 (121)	47 (18)
Total	30 (22)	135 (125)	47 (18)
<i>Relapse (prior therapy at Dx)</i>			
ATRA	33		
ATO	41		
Information unavailable	3		
<i>Age (at diagnosis)</i>			
Median	37 years		
Range	4-69 years		
<i>Gender</i>			
Male	56.7%		
Female	43.3%		

Abbreviations: APL, acute promyelocytic leukemia; Dx, newly diagnosed; Rel, relapse. Numbers within parentheses represent the number of samples with matched germline control.



**Figure 1.** Characteristics of somatic mutations detected at primary and relapse APL. **(a)** Comparison of mutational load between primary and relapse APL. Boxplots depict median and range for numbers of nonsynonymous and synonymous variants identified per exome. Difference between average number of variants between two groups was estimated using two-tailed Student's *t*-test. **(b)** Clustering analysis using variant allele frequencies (VAFs) of all somatic variants (VAF  $\geq$  0.08) observed at primary and relapse APL. DS2 and DS6 are shown as two representative cases, which harbor common or exclusive somatic mutations, respectively, at initial diagnosis and relapse.

mutations were observed in *FLT3*, *WT1* and *PML* genes, with mutations of *PML* detected only in relapse samples. Mutations in other novel genes such as *ARID1A*, *CEBPE*, *AKT1*, *KAT6A* and *HK3* were also detected in one sample each (Supplementary Table S2 and Supplementary Figure S3). Among the eight diagnosis–relapse pairs, six samples had mutations that were shared between the two disease stages, indicating re-emergence of disease subclone following therapy (Supplementary Figure S3). Although, no non-silent mutation common to both diagnosis and relapse was detected in DS1 and DS6, *PML*-*RARA* fusion was the common genetic lesion, indicating that the relapse evolved from an ancestral clone (Figure 1b and Supplementary Figure S3). Although sequencing depth was inadequate to discover minor subclones, clustering analysis outlined an evolutionary pattern where the founding clone or a subclone at primary disease acquired additional lesions at relapse (number of variants in DS11 were insufficient for clustering) (Figure 1b), similar to as previously described for acute myeloid leukemia (AML).<sup>39–41</sup>

#### Mutational topography of primary APL

Next, to uncover the repertoire of somatic mutations in APL, targeted sequencing was performed on exons of 398 genes, including 109 genes identified in our discovery cohort. The additional genes (listed in Supplementary Table S3) comprised those either previously implicated in hematological malignancies or identified in earlier leukemia sequencing studies. In this frequency cohort, we sequenced 22 paired diagnosis and relapse samples. In addition, 131 unpaired newly diagnosed and 47 unpaired relapse samples, making a total of 200 individual APL samples, were also sequenced (Supplementary Table S4). The number of samples analyzed in this study is summarized in Table 1. The mean sequencing depth was 272x (range 40–865x), with 90% of target bases covered  $>20x$  (Supplementary Figure S4). C–T transition was the most frequent nucleotide substitution at both primary and relapse APL (Supplementary Figure S5).

To identify significantly mutated genes in APL, we excluded from further analysis several genes (listed in Supplementary Table S5) that frequently exhibit high rate of variants because of large size and constitute potential false positives in cancer sequencing studies.<sup>42,43</sup> Somatic variants identified in bioinformatics analysis were verified using Sanger sequencing. Overall, 210 non-silent point mutations and small insertions/deletions were validated in our frequency cohort. In addition, the presence of *FLT3*-ITD (fms-

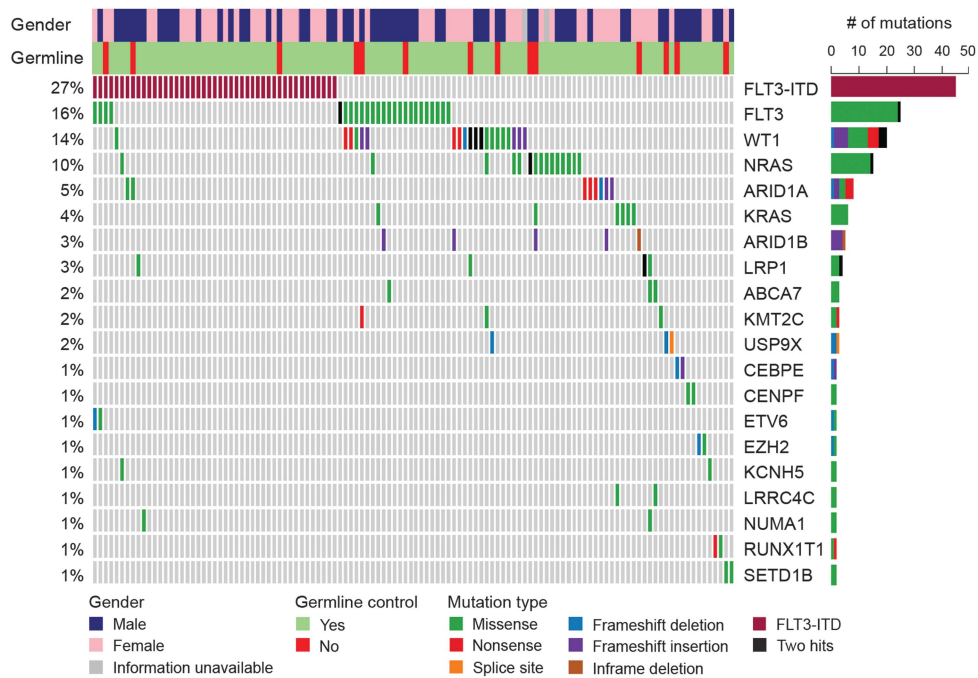
like tyrosine kinase 3-internal tandem duplication) was examined using the Genomon ITDetector<sup>44</sup> and verified using PCR analysis.

Our collective analysis of discovery and frequency cohorts revealed *FLT3* as most frequently altered gene in primary APL (Figure 2), similar to observation in an earlier study.<sup>7</sup> This included 27% cases with *FLT3*-ITD (45 out of 165 initial diagnosis samples) and 16% cases (26 mutations in 25 samples) with point mutations of *FLT3* (Figure 2 and Supplementary Tables S1). In fact, alteration of *FLT3* gene was a sole genetic aberration present in 25% of newly diagnosed APL cases (39/153 in frequency cohort), signifying their cooperativity with *PML*-*RARA* fusion in driving the disease. The somatic mutations of *FLT3* predominantly occurred in the tyrosine kinase domains 1 and 2 and in the juxtamembrane domain, with D835 residue most frequently mutated (18/27 cases) (Supplementary Figure S6 and Supplementary Tables S2 and S6). Other known AML genes that were recurrently mutated in our cohort included *WT1* (14%), *NRAS* (10%), *KRAS* (4%), *ETV6* (1%) and *EZH2* (1%) (Figure 2). Mutations of *NRAS* gene clustered at amino-acid residues G12, G13 and V14, whereas *KRAS* mutations occurred at G12 and Q61 residues (Supplementary Figure S6 and Supplementary Table S6). In addition, missense mutations at K117 and A146 were also detected in *KRAS*. Majority of *WT1* mutations resulted in truncated protein (seven nonsense, seven frameshift insertions/deletions and one splice site mutation out of 23 mutations). In addition, eight missense substitutions were clustered in the C-terminus region encoding Zn-finger domains (Supplementary Figure S6). Our sequencing analysis also revealed the absence of *FLT3*-ITD or non-silent mutation in any known driver genes in a quarter of primary APL samples (27%; 43/153 frequency cohort), suggesting that a single detectable genetic lesion (*PML*-*RARA* fusion) was sufficient to drive the disease.

Mutation-relation test<sup>37</sup> was used to examine the association between mutations identified in primary APL. *FLT3*-ITD rarely co-occurred with mutations in *FLT3* or *WT1* genes ( $P < 0.01$ ). Similarly, mutations of Ras pathway genes (*NRAS* and *KRAS*) were predominantly detected in cases with wild-type *FLT3* (*FLT3*-ITD vs *NRAS* mutation,  $P = 0.022$ ; *FLT3*-ITD vs *KRAS* mutation,  $P = 0.024$ ; *FLT3* mutation vs *NRAS* mutation,  $P = 0.027$ ).

APL exhibits distinct mutational signature among myeloid leukemia

Sequencing of a large cohort enabled us to contrast the mutational pattern of APL to other AML subtypes. Mutational frequencies of recurrently mutated genes in newly diagnosed APL



**Figure 2.** Recurrently mutated genes in primary APL. Mutational topography of newly diagnosed APL is depicted. Top 20 mutated genes validated by Sanger sequencing are shown and are color-coded for various types of mutation. Genes are displayed according to decreasing mutational frequency from top to bottom. Samples are displayed as columns and arranged to emphasize mutual exclusivity. Samples in which either no driver mutation was detected in our analysis pipeline or do not harbor mutations of top 20 genes are not included in the matrix. Bars on the right side depict absolute number of mutations in each gene.

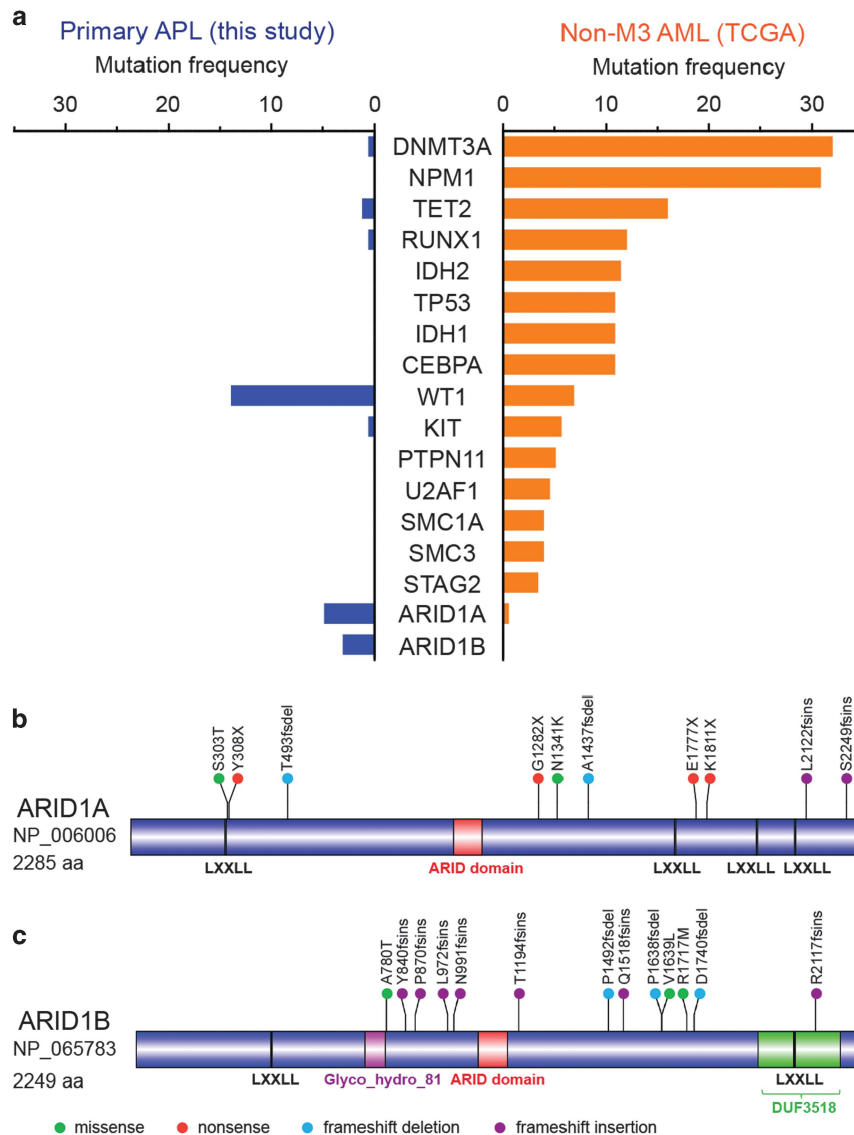
were compared with non-M3 AML samples in TCGA data set. Somatic mutations in known leukemia-related genes (e.g. *DNMT3A*, *NPM1*, *TET2*, *IDH1*, *IDH2* and *ASXL1*) were absent or rarely observed in APL (Figure 3a). This was evident not only in the primary disease, as previously noted by Welch *et al.*,<sup>7</sup> but also at relapse (two cases with mutation of *TET2*; one case with mutations of *DNMT3A*; no mutation of *NPM1*, *ASXL1*, *IDH1* and *IDH2* genes were observed in our study) (Supplementary Table S6). An increased incidence of *FLT3* alterations occurred in APL compared with other AML subtypes, although the difference did not reach statistical significance (*FLT3*-ITD: 27.3% in APL vs 18.9% in other AML,  $P=0.191$ ; mutant *FLT3*: 15.8% in APL vs 9.7% in other AML,  $P=0.078$ ) (Supplementary Figure S7). On the other hand, mutational frequency of other known drivers such as *NRAS*, *KRAS*, *EZH2* and *ETV6* were comparable between primary APL and other AML (Supplementary Figure S7). Our sequencing data also revealed recurrent mutations in several genes either previously unidentified in APL or mutated at higher frequency compared with other AML subtypes. These included two members of the SWI/SNF complex, *ARID1B* and *ARID1A* (Fisher's exact test,  $P < 0.05$ ), both of which exhibited high proportion of loss-of-function alterations including frameshift insertions/deletions or nonsense mutations (Figures 3a–c). We also noted recurrent mutations of other lesser recognized genes such as *CEBPE*, *NUMA1*, *RUNX1T1*, *HUWE1*, *HK3* and *USP9X*. These observations highlight a distinctive mutational profile for APL, distinguishing it from other AML subtypes.

#### Landscape of somatic mutations at APL relapse

To obtain insights into mutations either specifically present or enriched in APL relapse, mutational frequencies at initial diagnosis and relapse (morphological relapses) were compared. Significantly, higher frequency of mutations in four genes were detected in relapse samples, including *PML*, *RARA*, *RUNX1* and *ARID1B* (Fisher's exact test;  $P < 0.05$ ) (Figure 4a). *FLT3*-ITD was the most

frequent lesion at relapse, at a frequency similar to that observed at primary APL. On the other hand, mutations of *FLT3* were enriched in the primary APL samples and their incidence in relapse samples was significantly reduced (15.8% in diagnosis vs 5.2% in relapse; Fisher's exact test;  $P < 0.05$ ) (Figures 2 and 4a). Similar to the pattern observed in *FLT3*, mutations of both *NRAS* and *KRAS* occurred at a higher frequency in newly diagnosed samples compared with the relapse, albeit the difference in their mutational frequencies between the two stages did not reach statistical significance (*NRAS*: 9.7% in newly diagnosed and 5.2% in relapse; *KRAS*: 3.6% in primary APL and 1.3% in relapse). On the other hand, mutational frequency of *WT1* did not vary significantly between diagnosis and relapse stages (13.9% in primary APL and 18.2% in relapse).

Missense mutations of *RARA* were detected in seven relapse cases (eight mutations), all of which harbored mutations in the ligand-binding domain. One sample (222 R) had a second mutation of *RARA* (R217P) present in the vicinity of ligand-binding domain (Figure 4b). Three samples (four mutations), where RNA was available, showed that all four mutations of *RARA* were present in the *PML-RARA* fusion allele (Supplementary Figure S8). Similar mutations affecting the ligand-binding domain of *RARA* in the *PML-RARA* allele have also been reported previously.<sup>28,45</sup> Thirteen mutations of *PML* (in 11 cases) were observed in relapse APL, of which 12 were clustered in the B2 domain, and A216V was the most frequent alteration (Figure 4c). Although mutations in close proximity of C212–C213 dicysteine residues, which are involved in binding to *PML*, have been described, a missense mutation at N191 in B2 domain was also identified. A frameshift deletion in a shorter *PML* isoform (NM\_033249; S482) was also detected in relapse APL. In addition, a newly diagnosed case harbored a missense mutation at E699 (its matched relapse sample was not available). One relapse case (249 R) harbored two mutations (a missense and a nonsense point mutation) at the C213 residue, indicating that both *PML* alleles



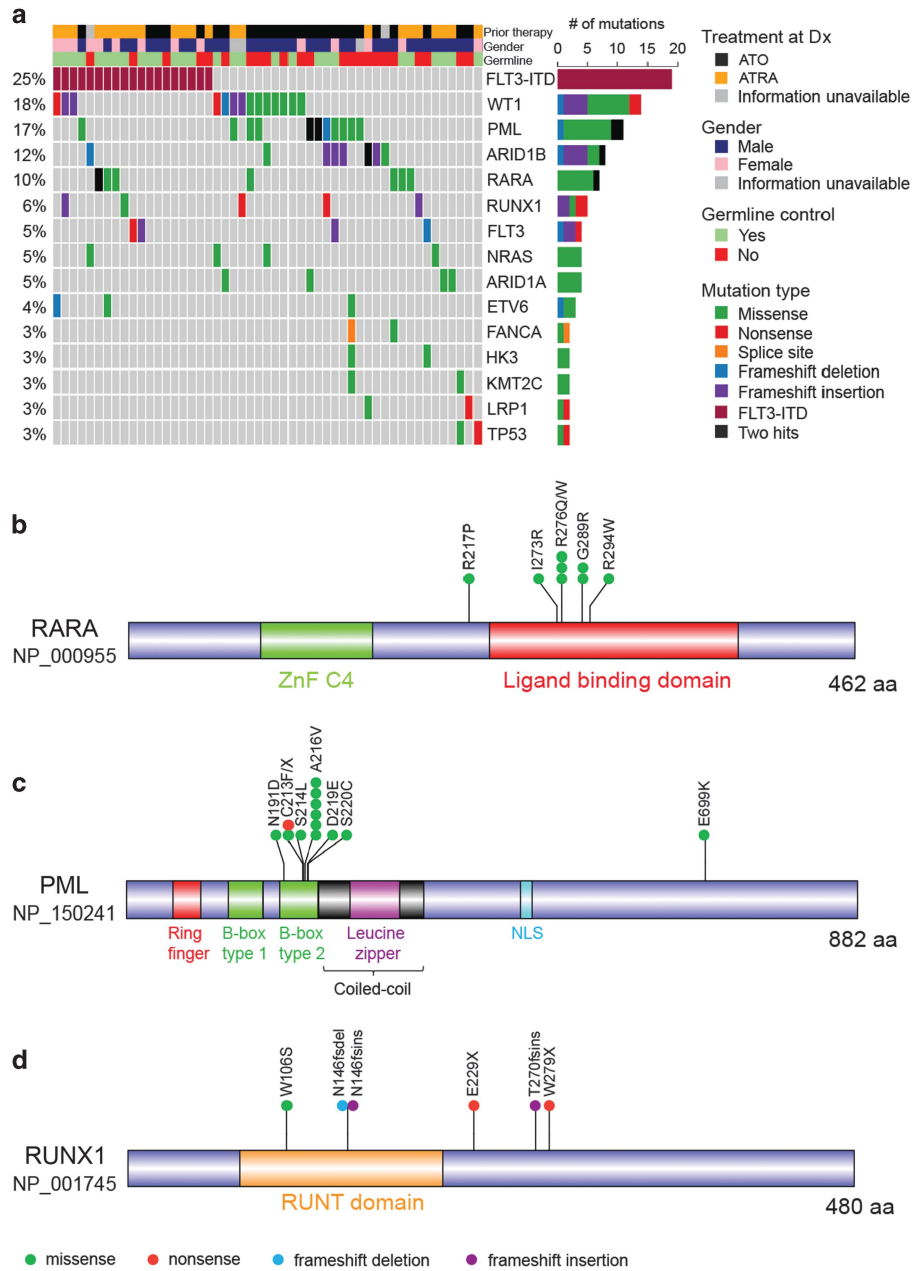
**Figure 3.** Distinct mutational profile of newly diagnosed APL. **(a)** Bars represent mutational rates of genes mutated at significantly different frequencies (Fisher's exact test;  $P < 0.05$ ) between APL and other AML subtypes at initial diagnosis. Frequency of validated non-silent mutations in 165 newly diagnosed APL samples analyzed in this study was compared with 176 non-APL AML samples from the TCGA database. *TTN*, which is most frequently mutated in public exomes,<sup>42</sup> and *MT-CYB*, which was not included in our targeted sequencing, were excluded from this representation. **(b)** and **(c)** Schematic representation of protein domains of ARID1A **(b)** and ARID1B **(c)** was drawn with DOG 2.0 software (<http://dog.biocuckoo.org>) using domain information from NCBI Protein database (<http://www.ncbi.nlm.nih.gov/protein>). Location and type of all somatic mutations verified at primary and relapse APL are shown. Circles depicting individual mutations are color-coded for different types of mutations.

were affected. RNA was available for three cases, of which two cases harbored mutations in the *PML-RARA* allele (Supplementary Figure S9). However, one case had mutations of D219-S220 dinucleotide in the wild-type *PML* allele (Supplementary Figure S9), indicating that disruption of normal *PML* function may have implications in APL.

We categorized our relapse samples into two groups, based on the treatment approach used at the primary disease, which was either ATRA (with or without chemotherapy) or arsenic trioxide (Table 1). Using this classification, a divergence was observed in the mutational pattern of *PML* and *RARA* genes in relapse following ATO and ATRA therapy, respectively. While 12 of 13 *PML* mutations (10/11 cases) occurred in post-ATO relapse, *RARA* mutations were more frequent post-ATRA treatment (6/8 mutations of *RARA* were detected post-ATRA treatment) (in 5 of 7

cases). Interestingly, one relapse sample (245 R; post-ATO relapse) had mutations of both *PML* and *RARA* genes (Supplementary Tables S4 and S6).

Although *RUNX1* mutations were rare in newly diagnosed APL, they occurred at a higher frequency at relapse (0.6% at primary APL and 6.5% at relapse) (Figure 4d). Interestingly, five of the six mutations of *RUNX1* were either frameshift insertion/deletions or nonsense mutations (Supplementary Table S6). Notably, we observed that mutations in *ARID1B* were also significantly enriched at relapse (3.0% at initial diagnosis and 11.7% at relapse), whereas *ARID1A* was mutated at a similar frequency at both stages of disease (4.8% at initial diagnosis and 5.2% at relapse). Both genes predominantly exhibited loss-of-function mutations, and two cases (159D and 210 R) harbored frameshift insertions of both *ARID1A* and *ARID1B* (Supplementary Table S6).



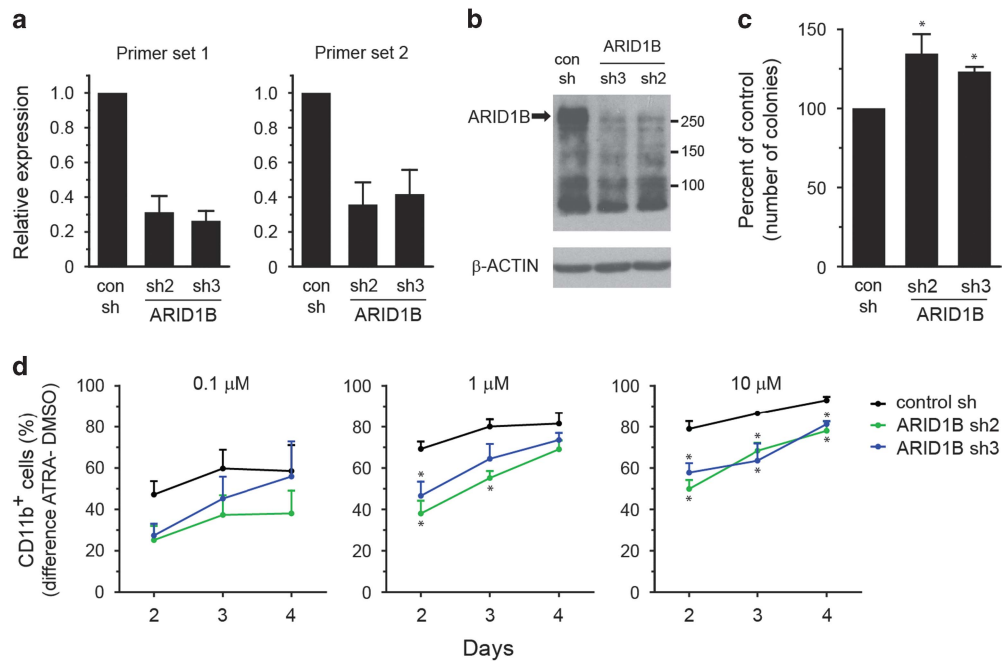
**Figure 4.** Spectrum of somatic mutations at APL relapse. **(a)** Matrix displays top 15 genes recurrently mutated at relapsed APL. Each column represents a relapse sample. Genes are arranged according to decreasing mutational frequencies from top to bottom. Right panel illustrates the number of mutations for all genes. Only those relapse samples that harbor mutations of top 15 genes are included in the matrix. **(b–d)** Protein domains for RARA **(b)**, PML **(c)** and RUNX1 **(d)** are drawn using the DOG 2.0 software (<http://dog.biocuckoo.org>), and type and location of validated mutations are illustrated. Information about protein domains was obtained from Human Protein Reference Database (<http://www.hprd.org>). All except one missense mutation (E699K) of PML were found in relapse samples. One frameshift deletion in *PML* transcript NM\_033249 (NP\_15025; S482fs) is not shown. All mutations of *RARA* were detected in relapse. Only one of the six mutations of *RARA* occurred in newly diagnosed samples.

Moreover, three cases with *ARID1B* mutations also harbored *PML* mutations, indicating cooperativity between the two genes (Figure 4a).

Knockdown of *ARID1B* leads to impaired differentiation of NB4 cells

Next, we investigated the functional consequences of the loss of *ARID1B*, one of the novel mutated gene in APL, on growth and differentiation of APL cells. To replicate the deficiency of *ARID1B* caused by truncating lesions, we used shRNA-mediated gene

knockdown approach to stably downregulate expression of *ARID1B* in NB4 cells. Two shRNA sequences (sh2 and sh3) significantly silenced the expression of *ARID1B* at both the transcript and protein levels (Figures 5a and b), without affecting the expression of *ARID1A*, a closely related member of *ARID1* family (Supplementary Figure S10). Suppression of *ARID1B* did not significantly alter the growth of NB4 cells in liquid culture over 4 days (Supplementary Figure S11). In the colony-forming assay, *ARID1B* knockdown cells exhibited a moderate increase in the number of colonies observed after 9 days (Figure 5c). NB4 cells can undergo granulocytic differentiation upon ATRA



**Figure 5.** Silencing of ARID1B impairs ATRA-induced neutrophil differentiation of NB4 cells. **(a and b)** Generation of NB4 cells with stable knockdown of ARID1B. Cells transduced with ARID1B shRNA (sh2 or sh3) display significant suppression of ARID1B transcript (two primer pairs) **(a)** and protein levels **(b)** compared with the control transduced (con) cells. Glyceraldehyde 3-phosphate dehydrogenase (*GAPDH*) transcript levels were used to normalize for RNA in quantitative real time-PCR (qRT-PCR) analysis in **(a)** and bars represent mean  $\pm$  s.d. **(c)** Clonogenic ability of ARID1B knockdown NB4 cells compared with control cells. Cells were plated in methylcellulose media, and colonies were enumerated after 9 days. Bars represent mean  $\pm$  s.e.m. **(d)** ATRA-induced differentiation of control and ARID1B knockdown NB4 cells was determined by surface expression of CD11b. Cells were treated with 0.1, 1 or 10  $\mu$ M ATRA, and the proportion of CD11b-expressing cells was determined by flow cytometry at indicated times. The difference in the percentage of CD11b<sup>+</sup> cells obtained in ATRA- vs DMSO-treated cells at each time point is depicted. Data represent mean  $\pm$  s.e.m. of four to five experiments (\* $P < 0.05$ ; Student's *t*-test).

treatment, and we used this *in vitro* model to assess the differentiation of ARID1B-deficient cells. We noticed that knockdown of ARID1B resulted in a small increase in CD11b expression compared with control shRNA-transduced cells without stimulation with ATRA (Supplementary Figure S12). Treatment of cells with different concentrations of ATRA-induced expression of CD11b in a dose- and time-dependent manner. However, increase in the proportion of CD11b-expressing cells in ATRA- vs vehicle-treated cells was lower in the ARID1B knockdown cells compared with the control cells. This observation suggests a role of ARID1B in *in vitro* differentiation towards the granulocytic lineage.

#### Gene expression changes induced by silencing of ARID1B

We performed RNA sequencing of control and ARID1B knockdown NB4 cells to examine transcriptomic changes caused by suppression of ARID1B. Gene expression analysis revealed differential expression of 1028 genes (false discovery rate  $< 0.05$ ). Significantly, expression of a majority of genes (740/1028) was elevated in the ARID1B knockdown cells compared with the control cells, whereas 288 genes were downregulated (Figure 6a and Supplementary Figure S13). Gene ontology analysis of upregulated genes showed a marked enrichment for several pathways related to immune response, signal transduction and hematopoietic differentiation, whereas downregulated genes were over-represented for cell adhesion and WNT signaling (Figure 6b). Using quantitative real time-PCR, we validated elevated expression of several genes involved in hematopoietic development and immune regulation in ARID1B knockdown cells. These included *GATA1*, *GATA2*, *IKZF2*, *NFE2*, *IRF5*, *BPI*, *PRG2* and *PRTN3*, whereas the expression of *WNT7B* and *HOXC4* was downregulated (Figure 6c). In accordance with increased expression of *GATA1* and *GATA2*,

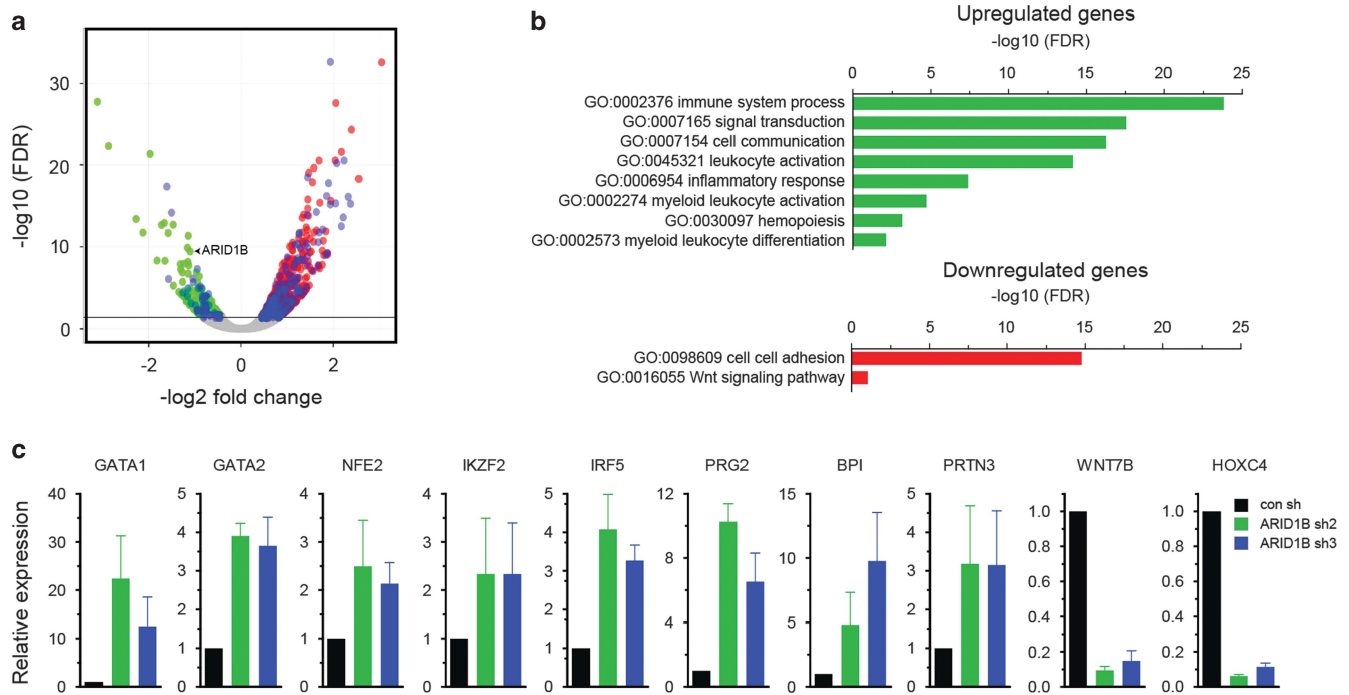
gene set enrichment analysis verified upregulation of their target genes in ARID1B knockdown NB4 cells (Supplementary Figure S14).

#### DISCUSSION

This study provides the most comprehensive profiling of somatic mutations in APL to date, at both initial diagnosis and relapse. We demonstrate that the mutational spectrum of APL is notably different from other AML subtypes. Overall, the topography of somatic mutations in APL is defined by recurrent alterations of *FLT3*, *WT1*, *NRAS*, *KRAS*, *ARID1B* and *ARID1A* genes, and the absence of mutations in other common AML genes including *DNMT3A*, *NPM1*, *TET2*, *ASXL1* and *IDH1/2*. Moreover, the repertoire of mutations at relapsed APL differs significantly from newly diagnosed cases and is characterized by alterations in *PML* and *RARA* genes, which are rarely affected by somatic mutations in primary APL. In our cohort, matched diagnosis samples were available for three relapse cases (DS4R, DS6R, 243 R) harboring four *PML* mutations and one case (29 R) harboring *RARA* mutation, all of which were negative for the corresponding mutations of *PML* and *RARA* genes. We also uncovered increased frequency of *ARID1B* and *RUNX1* mutations in APL relapse. In addition, the mutational frequency of *FLT3* was considerably lower at relapse compared with primary disease, although the proportion of FLT3-ITD was similar at the two stages of disease.

APL is distinctive from other AML subclasses in its sensitivity to ATRA- and ATO-based therapies. In this study, we also examined relapse-specific mutations in the context of therapeutic intervention used at the initial diagnosis. Notably, our relapse cohort comprised of sizable number of ATRA-free ATO-treated samples. We found that the incidence of mutations in *RARA* and *PML* genes largely segregated into post-ATRA and post-ATO relapses,





**Figure 6.** Gene expression changes in ARID1B knockdown NB4 cells. **(a)** Volcano plot depicts differentially expressed genes between ARID1B knockdown (sh2 and sh3) and control transduced NB4 cells. Horizontal line denotes false discovery rate (FDR) = 0.05. Blue dots represent genes involved in 'immune system process' GO:0002376. **(b)** Functional enrichment analysis (gene ontology) of genes either upregulated or downregulated in ARID1B knockdown NB4 cells (FDR < 0.05). **(c)** qRT-PCR analyses of selected genes identified as differentially expressed in RNA sequencing. *GAPDH* was used as an endogenous control to normalize for RNA quantity. Bars represent mean  $\pm$  s.e.m.

respectively. This indicates distinct mechanisms are involved in acquisition of resistance following two different therapeutic regimens.

Our RT-PCR experiments for allele-specific analyses show that mutations of *RARA* invariably occurred on the *PML-RARA* fusion allele, similar to previous studies.<sup>28,45</sup> Mutations of *PML* occurred in proximity to the C212-C213 cysteine residues, which is associated with binding of ATO to *PML* moiety.<sup>46,47</sup> These mutations of *PML* in the B2 domain are associated with resistance to arsenic therapy.<sup>30,32</sup> Although an initial report showed that mutations of *PML* in two ATO-resistant cases occurred on the *PML-RARA* allele and accounted for an impaired response to therapy,<sup>30</sup> we detected mutations of *PML* either on the rearranged (two cases) or the wild-type *PML* allele (one case). A recent report noted a mutation in the non-rearranged allele of *PML* gene in a case which presented with multiple relapses.<sup>31</sup> Also, truncating mutations of wild-type *PML* allele have been observed in ATRA-resistant APL,<sup>29</sup> indicating that mutations affecting either allele of *PML* may have pathological consequences.

Our sequencing data uncover recurrent mutations in two novel genes, *ARID1B* and *ARID1A*, in APL. Somatic mutations in these two members of SWI/SNF chromatin remodeling complex are very frequent in gynecologic and several other solid tumors.<sup>48–50</sup> However, incidence of somatic alterations in genes of ARID1 family is rare in myeloid leukemia,<sup>7,51</sup> although, recently, mutations of *ARID1A* have been detected in other hematological malignancies including chronic lymphocytic leukemia, natural killer/T-cell lymphoma and hairy cell leukemia.<sup>52–54</sup> Notably, large majority of mutations in both *ARID1B* and *ARID1A* in APL were loss-of-function alterations, similar to the truncating mutations observed in solid tumors.

Germline mutations and chromosomal aberrations affecting *ARID1B* are associated with disorders characterized by developmental delay and intellectual disability including Coffin-Siris

syndrome.<sup>55,56</sup> Although mutations of *ARID1B* have been reported in solid tumors, to our knowledge, this is the first report of *ARID1B* alterations in myeloid leukemia. Interestingly, mutations of *ARID1B* were more frequent at relapse APL compared with the newly diagnosed cases in our cohort. Our experiments show that the knockdown of ARID1B does not significantly modulate either the cell growth or colony-forming ability *in vitro*; however, it alters the differentiation of NB4 cells in response to ATRA. Transcriptome analysis showed that silencing of ARID1B resulted more prominently in activation of gene expression, suggesting it potentially functions as a repressor of gene expression.

Several other potentially novel drivers of leukemia were also identified at low mutational frequencies in this study. Among them, mutations in the transcription factor *CEBPE* were observed in three cases (two primary and one relapse APL), all of which were potentially deleterious alterations (frameshift insertion/deletion and splice site mutation). Loss-of-function germline alteration of *CEBPE* causes specific granule deficiency, a rare congenital disorder characterized by neutrophils with abnormal nuclear morphology, impaired function and lacking secondary and tertiary granule proteins.<sup>57</sup> However, somatic mutations of *CEBPE* in myeloid leukemia have not been previously identified. *CEBPE* is a critical regulator of granulocytic differentiation and truncating mutations in this gene may have implications on differentiation of promyelocytes. Another interesting candidate is a hexokinase gene, *HK3*, which was mutated in three APL cases. *HK3* is specifically expressed during granulocytic differentiation and was previously shown to be downregulated in APL.<sup>58</sup> Silencing of *HK3* also resulted in impaired ATRA-induced granulocytic differentiation of NB4 cells.<sup>58</sup> Four somatic mutations (in three cases) in *NUMA1* gene, located on chromosome 11 and involved in t(11;17) (q13;q21) translocation to form *NUMA1-RARA* fusion in variant cases of APL,<sup>59</sup> were also observed. Two primary APL cases harbored mutations of *RUNX1T1*, a gene fused with *RUNX1* in

AML characterized by t(8;21) translocation. *USP9X*, an X-linked intellectual disability gene,<sup>60</sup> which encodes for a deubiquitinase enzyme, was mutated in four APL cases. Although the function of *USP9X* in hematopoietic development has not been defined, all four mutations of *USP9X* were potentially damaging alterations (three frameshift deletion and one splice site substitution). The pathogenic implications of these novel mutations in the development of APL remain to be investigated.

### CONFLICT OF INTEREST

Dr Haferlach declares part ownership of MLL Munich Leukemia Laboratory. Dr Alpermann is an employee of MLL Munich Leukemia Laboratory. The other authors declare no conflict of interest.

### ACKNOWLEDGEMENTS

We thank Dr Elizabeth Moran (Rutgers New Jersey Medical School, The State University of New Jersey) for useful discussions and Dr Patrick Tan (Singapore) for sharing laboratory facilities. We also thank Dr Zang Zhi Jiang, Lim Su Lin and Mehnaz Elias (Singapore) for technical help. This work was funded by the Singapore Ministry of Health's National Medical Research Council (NMRC) under its Singapore Translational Research (STaR) Investigator Award to HPK, NMRC Centre Grant awarded to National University Cancer Institute, Singapore (NCIS), NCIS Centre Grant Seed Funding, the National Research Foundation Singapore and the Singapore Ministry of Education under its Research Centers of Excellence initiative. The study was also funded by NIH/NCI R01CA026038-35 awarded to HPK. We also acknowledge the funding support from NCI Grant CA31946. The study was supported by Grant HE 5240/5-1 from Deutsche Forschungsgemeinschaft awarded to MH. The study was also supported by Grants OMRPG3C0021 and MOHW104-TDU-B-212-124-006 awarded to L-YS. V Mathews was supported by Senior Fellowship program of Wellcome DBT India Alliance (IA/S/11/2500267), New Delhi, India and SG received Senior Research Fellowship from Council for Scientific and Industrial Research (CSIR), New Delhi, India. This research was supported by the Samuel Oschin Comprehensive Cancer Institute (SOCCI) at Cedars-Sinai Medical Center through the Eleanor and Glenn Padnick Discovery Fund in Cellular Therapy Project. We also acknowledge a generous donation from Melamed family.

### AUTHOR CONTRIBUTIONS

V Madan conceived the study, performed experiments, analyzed data and wrote the manuscript; PS, LH, JS, DK and NF performed experiments; AM, YN, KY, K-TT, MS, L-ZL, YS, SM and HY performed bioinformatics and statistical analyses; SG, NH, TA, SR, JM, EC, HH, GM, TM, TI, AB, RAL, BLP, M Lübbert, WJC, H-FT, MH, A Ganser, MK-M, SMK, HMK, DN, W-KH, WS, A Ghavamzadeh, KA and TH collected and processed patient samples and provided clinical data; M-CK and L-YS collected, processed and analyzed patient samples and provided clinical data; MG, L-WD, Q-YS, WC and M Lill contributed reagents and helped in data analysis; SO contributed clinical samples and supervised bioinformatics analysis; V Mathews conceived the study and provided clinical samples and data; HPK conceived and supervised the study, interpreted the data and wrote the manuscript. All authors reviewed and approved the manuscript.

### REFERENCES

- de The H, Chomienne C, Lanotte M, Degos L, Dejean A. The t(15;17) translocation of acute promyelocytic leukaemia fuses the retinoic acid receptor alpha gene to a novel transcribed locus. *Nature* 1990; **347**: 558–561.
- Borrow J, Goddard AD, Sheer D, Solomon E. Molecular analysis of acute promyelocytic leukemia breakpoint cluster region on chromosome 17. *Science* 1990; **249**: 1577–1580.
- Longo L, Pandolfi PP, Biondi A, Rambaldi A, Mencarelli A, Lo Coco F et al. Rearrangements and aberrant expression of the retinoic acid receptor alpha gene in acute promyelocytic leukemias. *J Exp Med* 1990; **172**: 1571–1575.
- Mistry AR, Pedersen EW, Solomon E, Grimwade D. The molecular pathogenesis of acute promyelocytic leukaemia: implications for the clinical management of the disease. *Blood Rev* 2003; **17**: 71–97.
- Redner RL. Variations on a theme: the alternate translocations in APL. *Leukemia* 2002; **16**: 1927–1932.
- Callens C, Chevret S, Cayuela JM, Cassinat B, Raffoux E, de Botton S et al. Prognostic implication of FLT3 and Ras gene mutations in patients with acute

- promyelocytic leukemia (APL): a retrospective study from the European APL Group. *Leukemia* 2005; **19**: 1153–1160.
- Welch JS, Ley TJ, Link DC, Miller CA, Larson DE, Koboldt DC et al. The origin and evolution of mutations in acute myeloid leukemia. *Cell* 2012; **150**: 264–278.
- Brown D, Kogan S, Lagasse E, Weissman I, Alcalay M, Pelicci PG et al. A PML-RARalpha transgene initiates murine acute promyelocytic leukemia. *Proc Natl Acad Sci USA* 1997; **94**: 2551–2556.
- Grisolano JL, Wesselschmidt RL, Pelicci PG, Ley TJ. Altered myeloid development and acute leukemia in transgenic mice expressing PML-RAR alpha under control of cathepsin G regulatory sequences. *Blood* 1997; **89**: 376–387.
- He LZ, Tribioli C, Rivi R, Peruzzi D, Pelicci PG, Soares V et al. Acute leukemia with promyelocytic features in PML/RARalpha transgenic mice. *Proc Natl Acad Sci USA* 1997; **94**: 5302–5307.
- Westervelt P, Lane AA, Pollock JL, Oldfather K, Holt MS, Zimonjic DB et al. High-penetrance mouse model of acute promyelocytic leukemia with very low levels of PML-RARalpha expression. *Blood* 2003; **102**: 1857–1865.
- Wartman LD, Larson DE, Xiang Z, Ding L, Chen K, Lin L et al. Sequencing a mouse acute promyelocytic leukemia genome reveals genetic events relevant for disease progression. *J Clin Invest* 2011; **121**: 1445–1455.
- Greif PA, Yaghmaie M, Konstandin NP, Ksienzyk B, Alimoghaddam K, Ghavamzadeh A et al. Somatic mutations in acute promyelocytic leukemia (APL) identified by exome sequencing. *Leukemia* 2011; **25**: 1519–1522.
- Riva L, Ronchini C, Bodini M, Lo-Coco F, Lavoragna S, Ottone T et al. Acute promyelocytic leukemias share cooperative mutations with other myeloid-leukemia subgroups. *Blood Cancer J* 2013; **3**: e147.
- de The H, Chen Z. Acute promyelocytic leukaemia: novel insights into the mechanisms of cure. *Nat Rev Cancer* 2010; **10**: 775–783.
- Park J, Jurcic JG, Rosenblat T, Tallman MS. Emerging new approaches for the treatment of acute promyelocytic leukemia. *Ther Adv Hematol* 2011; **2**: 335–352.
- Mathews V, George B, Lakshmi KM, Viswabandya A, Bajel A, Balasubramanian P et al. Single-agent arsenic trioxide in the treatment of newly diagnosed acute promyelocytic leukemia: durable remissions with minimal toxicity. *Blood* 2006; **107**: 2627–2632.
- Mathews V, George B, Chendamarai E, Lakshmi KM, Desire S, Balasubramanian P et al. Single-agent arsenic trioxide in the treatment of newly diagnosed acute promyelocytic leukemia: long-term follow-up data. *J Clin Oncol* 2010; **28**: 3866–3871.
- Ghavamzadeh A, Alimoghaddam K, Rostami S, Ghaffari SH, Jahani M, Irvani M et al. Phase II study of single-agent arsenic trioxide for the front-line therapy of acute promyelocytic leukemia. *J Clin Oncol* 2011; **29**: 2753–2757.
- Zhou J, Zhang Y, Li J, Li X, Hou J, Zhao Y et al. Single-agent arsenic trioxide in the treatment of children with newly diagnosed acute promyelocytic leukemia. *Blood* 2010; **115**: 1697–1702.
- Lo-Coco F, Avvisati G, Vignetti M, Thiede C, Orlando SM, Iacobelli S et al. Retinoic acid and arsenic trioxide for acute promyelocytic leukemia. *N Engl J Med* 2013; **369**: 111–121.
- Shen ZX, Shi ZZ, Fang J, Gu BW, Li JM, Zhu YM et al. All-trans retinoic acid/As2O3 combination yields a high quality remission and survival in newly diagnosed acute promyelocytic leukemia. *Proc Natl Acad Sci USA* 2004; **101**: 5328–5335.
- Dos Santos GA, Kats L, Pandolfi PP. Synergy against PML-RARα: targeting transcription, proteolysis, differentiation, and self-renewal in acute promyelocytic leukemia. *J Exp Med* 2013; **210**: 2793–2802.
- Sanz MA, Lo-Coco F. Modern approaches to treating acute promyelocytic leukemia. *J Clin Oncol* 2011; **29**: 495–503.
- Tomita A, Kiyoi H, Naoe T. Mechanisms of action and resistance to all-trans retinoic acid (ATRA) and arsenic trioxide (As2O3) in acute promyelocytic leukemia. *Int J Hematol* 2013; **97**: 717–725.
- Gallagher RE. Retinoic acid resistance in acute promyelocytic leukemia. *Leukemia* 2002; **16**: 1940–1958.
- Schachter-Tokarz E, Kelaidi C, Cassinat B, Chomienne C, Gardin C, Raffoux E et al. PML-RARalpha ligand-binding domain deletion mutations associated with reduced disease control and outcome after first relapse of APL. *Leukemia* 2010; **24**: 473–476.
- Gallagher RE, Moser BK, Racevskis J, Poire X, Bloomfield CD, Carroll AJ et al. Treatment-influenced associations of PML-RARalpha mutations, FLT3 mutations, and additional chromosome abnormalities in relapsed acute promyelocytic leukemia. *Blood* 2012; **120**: 2098–2108.
- Gurrieri C, Nafa K, Merghoub T, Bernardi R, Capodiecchi P, Biondi A et al. Mutations of the PML tumor suppressor gene in acute promyelocytic leukemia. *Blood* 2004; **103**: 2358–2362.
- Goto E, Tomita A, Hayakawa F, Atsumi A, Kiyoi H, Naoe T. Missense mutations in PML-RARA are critical for the lack of responsiveness to arsenic trioxide treatment. *Blood* 2011; **118**: 1600–1609.
- Lehmann-Che J, Bally C, de The H. Resistance to therapy in acute promyelocytic leukemia. *N Engl J Med* 2014; **371**: 1170–1172.

- 32 Zhu HH, Qin YZ, Huang XJ. Resistance to arsenic therapy in acute promyelocytic leukemia. *N Engl J Med* 2014; **370**: 1864–1866.
- 33 Faust GG, Hall IM. SAMBLASTER: fast duplicate marking and structural variant read extraction. *Bioinformatics* 2014; **30**: 2503–2505.
- 34 Shiraishi Y, Sato Y, Chiba K, Okuno Y, Nagata Y, Yoshida K *et al*. An empirical Bayesian framework for somatic mutation detection from cancer genome sequencing data. *Nucleic Acids Res* 2013; **41**: e89.
- 35 Koboldt DC, Zhang Q, Larson DE, Shen D, McLellan MD, Lin L *et al*. VarScan 2: somatic mutation and copy number alteration discovery in cancer by exome sequencing. *Genome Res* 2012; **22**: 568–576.
- 36 Miller CA, White BS, Dees ND, Griffith M, Welch JS, Griffith OL *et al*. SciClone: inferring clonal architecture and tracking the spatial and temporal patterns of tumor evolution. *PLoS Comput Biol* 2014; **10**: e1003665.
- 37 Dees ND, Zhang Q, Kandoth C, Wendl MC, Schierding W, Koboldt DC *et al*. MuSiC: identifying mutational significance in cancer genomes. *Genome Res* 2012; **22**: 1589–1598.
- 38 Madan V, Kanojia D, Li J, Okamoto R, Sato-Otsubo A, Kohlmann A *et al*. Aberrant splicing of U12-type introns is the hallmark of ZRSR2 mutant myelodysplastic syndrome. *Nat Commun* 2015; **6**: 6042.
- 39 Ding L, Ley TJ, Larson DE, Miller CA, Koboldt DC, Welch JS *et al*. Clonal evolution in relapsed acute myeloid leukaemia revealed by whole-genome sequencing. *Nature* 2012; **481**: 506–510.
- 40 Parkin B, Ouillette P, Li Y, Keller J, Lam C, Roulston D *et al*. Clonal evolution and devolution after chemotherapy in adult acute myelogenous leukemia. *Blood* 2013; **121**: 369–377.
- 41 Kronke J, Bullinger L, Teleanu V, Tschurtz F, Gaidzik VI, Kuhn MW *et al*. Clonal evolution in relapsed NPM1-mutated acute myeloid leukemia. *Blood* 2013; **122**: 100–108.
- 42 Shyr C, Tarailo-Graovac M, Gottlieb M, Lee JJ, van Karnebeek C, Wasserman WW. FLAGS, frequently mutated genes in public exomes. *BMC Med Genomics* 2014; **7**: 64.
- 43 Lawrence MS, Stojanov P, Polak P, Kryukov GV, Cibulskis K, Sivachenko A *et al*. Mutational heterogeneity in cancer and the search for new cancer-associated genes. *Nature* 2013; **499**: 214–218.
- 44 Chiba K, Shiraishi Y, Nagata Y, Yoshida K, Imoto S, Ogawa S *et al*. Genomon ITDetector: a tool for somatic internal tandem duplication detection from cancer genome sequencing data. *Bioinformatics* 2015; **31**: 116–118.
- 45 Ding W, Li YP, Nobile LM, Grills G, Carrera I, Paietta E *et al*. Leukemic cellular retinoic acid resistance and missense mutations in the PML-RARalpha fusion gene after relapse of acute promyelocytic leukemia from treatment with all-trans retinoic acid and intensive chemotherapy. *Blood* 1998; **92**: 1172–1183.
- 46 Zhang XW, Yan XJ, Zhou ZR, Yang FF, Wu ZY, Sun HB *et al*. Arsenic trioxide controls the fate of the PML-RARalpha oncoprotein by directly binding PML. *Science* 2010; **328**: 240–243.
- 47 Jeanne M, Lallemand-Breitenbach V, Ferhi O, Koken M, Le Bras M, Duffort S *et al*. PML/RARA oxidation and arsenic binding initiate the antileukemia response of As2O3. *Cancer Cell* 2010; **18**: 88–98.
- 48 Wu JN, Roberts CW. ARID1A mutations in cancer: another epigenetic tumor suppressor? *Cancer Discov* 2013; **3**: 35–43.
- 49 Stephens PJ, Tarpey PS, Davies H, Van Loo P, Greenman C, Wedge DC *et al*. The landscape of cancer genes and mutational processes in breast cancer. *Nature* 2012; **486**: 400–404.
- 50 Jones S, Stransky N, McCord CL, Cerami E, Lagowski J, Kelly D *et al*. Genomic analyses of gynaecologic carcinomas reveal frequent mutations in chromatin remodelling genes. *Nat Commun* 2014; **5**: 5006.
- 51 Cancer Genome Atlas Research Network. Genomic and epigenomic landscapes of adult *de novo* acute myeloid leukemia. *N Engl J Med* 2013; **368**: 2059–2074.
- 52 Jiang L, Gu ZH, Yan ZX, Zhao X, Xie YY, Zhang ZG *et al*. Exome sequencing identifies somatic mutations of DDX3X in natural killer/T-cell lymphoma. *Nat Genet* 2015; **47**: 1061–1066.
- 53 Puente XS, Bea S, Valdes-Mas R, Villamor N, Gutierrez-Abril J, Martin-Subero JI *et al*. Non-coding recurrent mutations in chronic lymphocytic leukaemia. *Nature* 2015; **526**: 519–524.
- 54 Dietrich S, Hullein J, Lee SC, Hutter B, Gonzalez D, Jayne S *et al*. Recurrent CDKN1B (p27) mutations in hairy cell leukemia. *Blood* 2015; **126**: 1005–1008.
- 55 Hoyer J, Ekici AB, Endeke S, Popp B, Zweier C, Wiesener A *et al*. Haploinsufficiency of ARID1B, a member of the SWI/SNF-a chromatin-remodeling complex, is a frequent cause of intellectual disability. *Am J Hum Genet* 2012; **90**: 565–572.
- 56 Santen GW, Aten E, Sun Y, Almomani R, Gilissen C, Nielsen M *et al*. Mutations in SWI/SNF chromatin remodeling complex gene ARID1B cause Coffin-Siris syndrome. *Nat Genet* 2012; **44**: 379–380.
- 57 Lekstrom-Himes JA, Dorman SE, Kopar P, Holland SM, Gallin JI. Neutrophil-specific granule deficiency results from a novel mutation with loss of function of the transcription factor CCAAT/enhancer binding protein epsilon. *J Exp Med* 1999; **189**: 1847–1852.
- 58 Federzoni EA, Valk PJ, Torbett BE, Haferlach T, Lowenberg B, Fey MF *et al*. PU.1 is linking the glycolytic enzyme HK3 in neutrophil differentiation and survival of APL cells. *Blood* 2012; **119**: 4963–4970.
- 59 Wells RA, Catzavelos C, Kamel-Reid S. Fusion of retinoic acid receptor alpha to NuMA, the nuclear mitotic apparatus protein, by a variant translocation in acute promyelocytic leukaemia. *Nat Genet* 1997; **17**: 109–113.
- 60 Homan CC, Kumar R, Nguyen LS, Haan E, Raymond FL, Abidi F *et al*. Mutations in USP9X are associated with X-linked intellectual disability and disrupt neuronal cell migration and growth. *Am J Hum Genet* 2014; **94**: 470–478.



This work is licensed under a Creative Commons Attribution-NonCommercial-ShareAlike 4.0 International License. The images or other third party material in this article are included in the article's Creative Commons license, unless indicated otherwise in the credit line; if the material is not included under the Creative Commons license, users will need to obtain permission from the license holder to reproduce the material. To view a copy of this license, visit <http://creativecommons.org/licenses/by-nc-sa/4.0/>

Supplementary Information accompanies this paper on the Leukemia website (<http://www.nature.com/leu>)