

UC Berkeley

Working Papers

Title

Mortgage Terminations, Heterogeneity, and the Exercise of Mortgage Options

Permalink

<https://escholarship.org/uc/item/96r560pg>

Authors

Deng, Yongheng

Quigley, John M.

Van Order, Robert

Publication Date

1999-02-01



Institute of
Business and
Economic Research

Fisher Center for
Real Estate and
Urban Economics

PROGRAM ON HOUSING AND URBAN POLICY

WORKING PAPER SERIES

WORKING PAPER NO. W99-002

MORTGAGE TERMINATIONS, HETEROGENEITY AND THE EXERCISE OF MORTGAGE OPTIONS

By

Yongheng Deng
John M. Quigley
Robert Van Order

These papers are preliminary
in nature: their purpose is to
stimulate discussion and
comment. Therefore, they are not
to be cited or quoted in any
publication without the express
permission of the author.

Abstract

As applied to the behavior of homeowners with mortgages, option theory predicts that mortgage prepayment or default will be exercised if the call or put option is “in the money” by some specific amount. Our analysis: tests the extent to which the option approach can explain default and prepayment behavior; evaluates the practical importance of modeling both options simultaneously; and models the unobserved heterogeneity of borrowers in the home mortgage market. The paper presents a unified model of the competing risks of mortgage termination by prepayment and default, considering the two hazards as dependent competing risks which are estimated jointly. It also accounts for the unobserved heterogeneity among borrowers, and estimates the unobserved heterogeneity simultaneously with the parameters and baseline hazards associated with prepayment and default functions.

Our results show that the option model, in its most straightforward version, does a good job of explaining default and prepayment; but it is not enough by itself. The simultaneity of the options is very important empirically in explaining behavior. The results also show that there exists significant heterogeneity among mortgage borrowers. Ignoring this heterogeneity results in serious errors in estimating the prepayment behavior of homeowners.

KEYWORDS: Mortgage default, prepayment, dependent competing risks, mortgage pricing.

Mortgage Terminations, Heterogeneity and the Exercise of Mortgage Options

1 Introduction

THE MORTGAGE MARKET IS QUITE LARGE and is increasing in importance. The outstanding volume of residential mortgages is currently over \$ 3 trillion, and volume has doubled in the past decade. In comparison, the stock of outstanding U.S. government debt is currently about \$ 5 trillion. Almost half of the stock of mortgages is held in “mortgage-backed securities,” and about half of all new mortgages are “securitized.” The rise of securitization, the trading of these securities, and the growing use of mortgage-backed securities as collateral for “derivatives” (e.g., collateralized mortgage obligations) has generated a great deal of interest in the economics of mortgage and mortgage-backed securities.

Pricing mortgage contracts is complicated, primarily by the options available to the borrower to default or to prepay. These options are distinct, but not independent. Thus, one cannot calculate accurately the economic value of the default option without considering simultaneously the financial incentive for prepayment. Furthermore, risk preferences and other idiosyncratic differences across borrowers may vary widely. Typically, it is very difficult to measure this heterogeneity explicitly. Appropriately modeling these prepayment and default risks is crucial to the pricing of mortgages and to understanding the economic behavior of homeowners.

The contingent claims models, developed by Black and Scholes (1973), Merton (1973), Cox, Ingersoll, and Ross (1985), and others, provide a coherent motivation for borrower behavior, and a number of studies have applied this model to the mortgage market. Hendershott and Van Order (1987) and Kau and Keenan (1995) have surveyed much of the literature related to mortgage pricing.

Virtually all previous studies using option models, however, focus on applying them to explain either prepayment or default behavior, but not both. For instance, in the first application of option models to mortgages, Findley and Capozza (1977) analyzed the prepayment options of holders of adjustable-rate and fixed-rate mortgages. Dunn and McConnell (1981), Buser and Hendershott (1984), and Brennan and Schwartz (1985) used option theory to price callable mortgages, relying on simulation methods. Green and Shoven (1986), Schwartz and Torous (1989) and Quigley and Van Order (1990) provided empirical estimates of option-based prepayment models.

Cunningham and Hendershott (1984) and Epperson, Kau, Keenan, and Muller III (1985) applied option models to price default risk, modeling default as a put option, and Foster and Van Order (1984) and Quigley and Van Order (1995) estimated default models empirically in an option-based framework. Quercia and Stegman (1992) and Vandell (1993) reviewed many of these default models.

A series of papers by Kau, Keenan, Muller, and Epperson (1992, 1995), Kau and Keenan (1996) and Titman and Torous (1989) provided theoretical models which emphasized the importance of the jointness of prepayment and default options. A homeowner who exercises the default option today gives up the option to default in the future, but she also gives up the option to prepay the mortgage. Foster and Van Order (1985) estimated simultaneous models of default and prepayment using data on large pools of FHA loans, and Schwartz and Torous (1993) estimated the joint hazard using a Poisson regression approach and aggregate data. Deng, Quigley, and Van Order (1996) and Deng (1997) were the first to analyze residential mortgage prepayment and default behavior using micro data on the joint choices of individuals. However, the competing risks hazard model common to all these studies ignores the heterogeneity among borrowers. Presumably a substantial number of homeowners are less likely to exercise put and call options on mortgages in the fully rational way predicted by finance theory. Accounting for this group is potentially important in understanding market behavior and in pricing seasoned mortgages.

In this paper, we present a unified economic model of the competing risks of mortgage termination by prepayment and default. We adopt a proportional hazard framework to analyze these competing risks empirically, using a large sample of individual loans, and we extend the model to analyze unobserved heterogeneity. We test three aspects of homeowner behavior in the mortgage market:

1. The extent to which the option approach can explain the default and prepayment behavior of borrowers with single-family mortgages;
2. The importance of modeling both options simultaneously; and
3. The importance of heterogeneity of borrowers in explaining behavior in the market.

We find that:

1. The option model, in its most straightforward version, does a good job of explaining default and prepayment; but it is not enough by itself. Either transactions costs vary a great deal across borrowers, or else some people are simply much worse at exercising options;
2. The simultaneity of the options is very important empirically in explaining behavior. In particular, factors that trigger one option are also important in triggering or foregoing exercise of the other; and
3. Unobserved borrower heterogeneity is quite important in accounting for borrower behavior. We allow for heterogeneity by incorporating into the estimation the possibility that there are different sorts of borrowers, some very astute, some quite passive, and others somewhere in between.² We find that heterogeneity is significant. It has important effects on key elasticities explaining behavior, particularly with respect to prepayment.

²The unobserved heterogeneity may be attributed to unmeasured house-specific factors (such as unexpected depreciation or appreciation of property values) as well as to borrower tastes or abilities.

The paper is organized as follows: Section 2 reviews the application of option models to mortgage terminations. Section 3 discusses the proportional hazard model, specified with competing risks, time-varying covariates and unobserved heterogeneity. Section 4 presents an extensive empirical analysis. Section 5 is a brief conclusion.

2 Mortgage Terminations and Option Pricing

Well-informed borrowers in a perfectly competitive market will exercise financial options when they can thereby increase their wealth. In the absence of either transactions costs or reputation costs which reduce credit ratings, and with assumable mortgages (or no exogenous reasons for residential mobility), default and prepayment are essentially financial decisions which can be separated from real (housing) decisions, and the simplest version of the Miller and Modigliani theory of the irrelevance of financial structure holds.³ Under these conditions, individuals can increase their wealth by defaulting on a mortgage when the market value of the mortgage equals or exceeds the value of the house. Similarly, by prepaying the mortgage when market value equals or exceeds par, they can increase wealth by refinancing. A necessary condition for exercising an option is that it be “in the money,” but that is not sufficient. Exercising either option now means giving up the option to exercise both options later. For instance, a borrower whose house price declines below the mortgage balance may not default immediately, in part because after the price decline the mortgage has a below-market rate,⁴ but also because by defaulting, the borrower would also lose the option to refinance later on.

While virtually all the recent research on prepayment and default, summarized above, has used option-based models, the underlying theories behind the models differ importantly in the treatment

³See Kau, Keenan, Muller, and Epperson (1995) for a recent discussion.

⁴This is because mortgage is now riskier, defaulting and buying back the same house would require paying a higher interest rate or making a larger downpayment.

of transactions costs.⁵ For simplicity, we divide these approaches into polar cases. The first case, Model I, assumes no transactions costs (see Titman and Torous 1989, Kau, Keenan, Muller, and Epperson 1992), and “ruthless” exercise of both options. The second case, Model II, emphasizes transactions costs, particularly in exercise of the default option. It is assumed that transactions costs are sufficiently high that default requires, not only negative equity, but also a “trigger event” which forces the borrower to leave the house. Model II also entertains the possibility that there are significant transactions costs involved in prepaying, or else that some borrowers are more astute than others at exercising options (see Archer, Ling, and McGill 1996). Finally, Model II also allows the possibility of significant unobserved heterogeneity. Thus the separation between housing and finance decisions is incomplete.

According to Model I, understanding when to exercise either option requires specifying the underlying state variables and the parameters that determine the value of the contract and then deducing the rule for exercise that maximizes borrower wealth. For residential mortgages, the key state variables are interest rates and house values. The value of a mortgage $M(c, r, H, B, k)$ depends upon the coupon rate, c , a vector of relevant interest rates, r , property value, H , the outstanding balance, B , the age of the loan, k , and some other parameters. With continuous time, a standard arbitrage argument is sufficient to derive an equilibrium condition for M (a second order partial differential equation) such that the value of the mortgage equals the risk-adjusted expected present value of its net cash flows.

Assume that house price changes are continuous with an instantaneous mean μ and a standard deviation σ_h . Let d be the imputed rent payout (“dividend”) rate. For simplicity, assume there is only one interest rate, the instantaneous short rate r , which determines the yield curve. Let θ be the mean value of the short rate, γ be the rate of convergence for the short rate, σ_r be the volatility

⁵See Kau, Keenan, and Kim (1993) for an explicit discussion of transaction costs.

of the short rate, and ρ be the correlation between interest rate changes and house price changes. Then it has been shown (Kau, Keenan, Muller, and Epperson 1995) that the value of the mortgage M satisfies

$$(1) \quad \begin{aligned} \frac{1}{2}r\sigma_r^2\frac{\partial^2 M}{\partial r^2} + \rho\sqrt{r}H\sigma_r\sigma_h\frac{\partial^2 M}{\partial r\partial H} + \frac{1}{2}H^2\sigma_h^2\frac{\partial^2 M}{\partial H^2} + \gamma(\theta - r)\frac{\partial M}{\partial r} \\ + (r - d)H\frac{\partial M}{\partial H} + \frac{\partial M}{\partial \tau} - rM = 0. \end{aligned}$$

The value of $M(\cdot)$ and the optimal default and prepayment strategy are determined simultaneously. Equation (1) is consistent with an infinite number of functions $M(\cdot)$. The appropriate function is determined by choosing the optimal level of r , r^* , and the optimal level of H , H^* , at which to terminate the mortgage through default or prepayment. These are the levels of r and H that minimize M given equation (1) (See Kau, Keenan, Muller, and Epperson 1995); these levels are functions of c, d, B, k and the parameters governing the stochastic processes for r and H . Due to the jointness of the options, there are two pairs of r and H that trigger termination. There are levels of r that trigger default as well as prepayment, and levels of H that trigger prepayment as well as default. For instance, a borrower may default at a low enough level of r as a means of prepayment, and a borrower might refinance when equity value has risen because the loan is now safer and would carry a lower interest rate. The estimated probability of default or prepayment is the probability of these levels of r and H occurring, conditional on the information set of actors in the market and the researchers observing them.

Note that the borrower does not have to solve (1) and the boundary conditions in order to know when to exercise either option. All that is necessary is knowledge of market prices. For instance, for a fixed-rate mortgage, the prepayment option should be exercised whenever the borrower can refinance the loan for the same remaining term at par at a mortgage rate less than the coupon on the current loan or, alternatively when the market value of the mortgage equals (or exceeds)

the mortgage balance. Default should be exercised when the borrower's payments would be lower on a new zero-downpayment loan for the same remaining term, used to purchase the same house. Of course, we on the outside do not observe these market alternatives (and markets are not that complete anyway); this greatly complicates testing the model.

Due to "data limitations," the analyst does not observe the critical levels of house price and the mortgage rate that trigger exercise from the details of the mortgage contract. All that we can hope to observe is the extent to which either option is "in the money." But we cannot even measure directly the extent to which the default option is in the money without data on the course of individual house prices. We can however estimate the probability that the option is in the money, given the initial loan-to-value ratio and the stochastic process for house prices. The analyst can control for the remaining term of the loan, but not for changes in the parameters of the house price or interest rate process. This reality suggests that it is more productive to consider optimal exercise in probabilistic terms and then to test some of the major predictions of Model I: First, the probability of exercise should increase as the option moves further into the money. Second, the probability of exercise should accelerate as the option moves further into the money. Third, because exercising one option means giving up the other option, the extent to which one option is "in the money" should affect the exercise of the other. Thus, for example, the probability of prepayment is a function of the extent to which the default option is in the money.

Model I can be extended to address asymmetric information. For instance, we cannot observe directly the parameters governing house price volatilities. This can be a problem if the volatilities vary in a systematic way, for instance if borrowers know more about their own house price volatility than lenders do. Then risky houses might be financed with high loan-to-value (LTV) loans, as borrowers exploit underpriced options.⁶ One may control for this by using initial LTV as an

⁶See Yezer, Phillips, and Trost (1994) for a discussion.

explanatory variable in predicting defaults. Similarly, borrowers who expect to move sooner than average will choose to pay fewer “points” up-front; as a result they will have a higher than average coupons. Also lenders may charge higher rates to borrowers with riskier houses, so that high rates will be associated with higher defaults.

Model I has the great advantage of simplicity.

Model II incorporates transactions costs in a broad sense. It is not simple because transaction costs are complicated and are generally not observable. For instance, different transaction costs across borrowers have been used to explain the observation that the prepayments in mortgage pools tend to be slower than expected and drawn out over time (e.g., see Archer and Ling 1993, Stanton 1995, Harding 1997). This raises the general question of unobserved differences among mortgage borrowers. Whether this empirical finding arises from variations in transaction costs or differences in the astuteness of homeowners exercising options, unobserved heterogeneity means that surviving borrowers are systematically different over time. For instance, surviving borrowers may be increasingly less interest-rate sensitive over time if more astute borrowers refinance first, something of obvious importance in pricing seasoned mortgages.

Transactions costs are more complicated on the default side, particularly if the mortgage is not assumable. A borrower forced to move (e.g., due to divorce or job loss) who cannot have the mortgage assumed has a very short remaining term and may thus default with little negative equity. On the other hand, if there are costs to defaulting, H^* may be lower than Model I implies. For these reasons, many researchers (see Quigley and Van Order 1995, for a discussion) estimate modified option models, which predict that exercise is a function of both “trigger events” like default or divorce and also the extent to which the option is in the money.

We follow Kau and Keenan (1996) who introduce random terminations into the model. These

terminations force either a prepayment or a default. If mortgages are not assumable⁷ and there are no (e.g., reputation) costs to default, a random termination will lead to default if the house is worth less than the mortgage balance, and prepayment otherwise. Note that in Model II, it is the par value of the mortgage that is relevant for default. In contrast, in Model I a borrower is less likely to default when interest rates increase due to the value of the low-rate mortgage. According to Model II, a borrower who is forced to leave the house does not have the option to keep the mortgage alive. As is the case with prepayments, transactions costs matter, especially if they vary across borrowers or if there are unobservable differences in astuteness among borrowers.

Estimates of default and prepayment are reported below in three stages. First, we estimate proportional hazard models which use as explanatory variables only the extent to which the options are “in the money,” in order to test the predictions of Model I. Second, we add variables that are proxies for information asymmetry (e.g., the original loan-to-value ratio) and trigger events (e.g., unemployment and divorce). Finally, we allow for unobserved heterogeneity and estimate the nonparametric distribution of the unobserved heterogeneity simultaneously with the competing risks of prepayment and default functions.

3 A Competing Risks Model of Mortgage Termination with Unobserved Heterogeneity

The proportional hazard model introduced by Cox (Cox and Oakes 1984), provides a convenient framework for considering the exercise of options empirically and the importance of other trigger events in mortgage terminations.

⁷The empirical analysis below is based on mortgages which were nominally not assumable, but some states forbade exercise of due-on-sale clauses during the observation period, and in any event due on sales clauses were typically not enforced.

Han and Hausman (1990), Sueyoshi (1992) and McCall (1996) (HHSM, for short) suggested a maximum likelihood estimation approach for the proportional hazard model with grouped duration data. The HHSM approach estimates the competing risks simultaneously, accounts for the fact that risks may be correlated, and also that covariates may be time-varying. There is no restriction on the functional form of the baseline hazard (described below). Following HHSM, the competing risks model for mortgage prepayment and default can be derived:

Let T_p and T_d be the discrete random variables representing the duration of a mortgage until it is terminated by the mortgage holder in the form of prepayment or default, respectively. The joint survivor function conditional on η_p , η_d , r , H , Y and X can be expressed in the following form:

$$(2) \quad S(t_p, t_d | r, H, Y, X, \eta_p, \eta_d) = \exp \left(-\eta_p \sum_{k=1}^{t_p} \exp(\gamma_{pk} + g_{pk}(r, H, Y) + \beta'_p X) - \eta_d \sum_{k=1}^{t_d} \exp(\gamma_{dk} + g_{dk}(r, H, Y) + \beta'_d X) \right),$$

where $g_{jk}(r, H, Y)$ are time-varying functions of options-related variables;⁸ r and H are the relevant interest rates and property values, respectively, as discussed in the previous section; Y is a vector of other variables which will be used, together with r and H , to estimate the market values of the options empirically; X is a vector of other non-option-related variables, which may include indicators reflecting a borrower's credit risk or financial strength, as well as other trigger events, such as unemployment and divorce. To simplify the notation, we suppress the time-varying subscripts for r , H , Y and X . γ_{jk} are parameters of the baseline function which may be estimated non-

⁸The details of the function $g_{jk}(r, H, Y)$ are specified in the following section and the appendix.

parametrically, following Han and Hausman (1990)

$$(3) \quad \gamma_{jk} = \log \left[\int_{k-1}^k h_{0j}(t) dt \right], \quad j = p, d.$$

η_p and η_d are unobserved heterogeneities associated with the hazard functions for prepayment and default respectively.

We allow for the possibility that the population of mortgage borrowers consists of M distinct groups. The joint distribution of the unobservables (η_p, η_d) is modeled by assuming that these distinct, but unobserved types of individuals, $m = 1, 2, \dots, M$, (an individual in group m is characterized by the doublet of location parameters (η_{pm}, η_{dm})), occur in the population with relative frequency p_m , $m = 1, 2, \dots, M$.

Due to the nature of the competing risks between prepayment and default, only the duration associated with the type which terminates first is observed, i.e. $t = \min(t_p, t_d)$. Define $F_p(k | \eta_p, \eta_d)$ as the probability of mortgage termination by prepayment in period k , $F_d(k | \eta_p, \eta_d)$ as the probability of mortgage termination by default in period k , $F_u(k | \eta_p, \eta_d)$ as the probability of mortgage termination in period k but information on the cause of the termination is missing, and $F_c(k | \eta_p, \eta_d)$ as the probability that mortgage duration data are censored in period k due to the ending of the data collecting period.

Following McCall (1996), these probabilities can be expressed as:

$$(4) \quad F_p(k | \eta_p, \eta_d) = S(k, k | \eta_p, \eta_d) - S(k+1, k | \eta_p, \eta_d) - \frac{1}{2}S(k, k | \eta_p, \eta_d) \\ + S(k+1, k+1 | \eta_p, \eta_d) - S(k, k+1 | \eta_p, \eta_d) - S(k+1, k | \eta_p, \eta_d),$$

$$(5) \quad F_d(k | \eta_p, \eta_d) = S(k, k | \eta_p, \eta_d) - S(k, k+1 | \eta_p, \eta_d) - \frac{1}{2}S(k, k | \eta_p, \eta_d) \\ + S(k+1, k+1 | \eta_p, \eta_d) - S(k, k+1 | \eta_p, \eta_d) - S(k+1, k | \eta_p, \eta_d),$$

$$(6) \quad F_u(k | \eta_p, \eta_d) = S(k, k | \eta_p, \eta_d) - S(k+1, k+1 | \eta_p, \eta_d),$$

and

$$(7) \quad F_c(k | \eta_p, \eta_d) = S(k, k | \eta_p, \eta_d),$$

where the dependence of these functions on r , H , Y and X has been omitted for notational simplicity.

The unconditional probability is given by

$$(8) \quad F_j(k) = \sum_{m=1}^M p_m F_j(k | \eta_{pm}, \eta_{dm}), \quad j = p, d, u, c.$$

The log likelihood function of the competing risks model is given by

$$(9) \quad \log L = \sum_{i=1}^N \delta_{pi} \log(F_p(K_i)) + \delta_{di} \log(F_d(K_i)) + \delta_{ui} \log(F_u(K_i)) + \delta_{ci} \log(F_c(K_i)),$$

where δ_{ji} , $j = p, d, u, c$ are indicator variables which take value one if the i th loan is terminated by prepayment, default, unknown type, or censoring, respectively, and take a value of zero otherwise.

4 The Empirical Analysis

The empirical analysis is based upon individual mortgage history data maintained by the Federal Home Loan Mortgage Corporation (Freddie Mac). The data base contains 1,489,372 observations on single family mortgage loans issued between 1976 to 1983 and purchased by Freddie Mac. All are fixed-rate, level-payment, fully-amortized loans, most of them with thirty-year terms. The mortgage history period ends in the first quarter of 1992. For each mortgage loan, the available information includes the year and month of origination and termination (if it has been closed), indicators of prepayment or default, the purchase price of the property, the original loan amount, the initial loan-to-value ratio, the mortgage contract interest rate, the monthly principal and interest payment, the state, the region and the major metropolitan area in which the property is located. For the mortgage default and prepayment model, censored observations include all matured loans as well as the loans active at the end of the period.

The analysis is confined to mortgage loans issued for owner occupancy, and includes only those loans which were either closed or still active at the first quarter of 1992. The analysis is confined to loans issued in 30 major metropolitan areas (MSAs) — a total of 447,042 observations. Loans are observed in each quarter from the quarter of origination through the quarter of termination, maturation, or through 1992:I for active loans.

The key variables are those measuring the extent to which the put and call options are in the money. To value the call option, the current mortgage interest rate and the initial contract terms are sufficient. We compute a variable “*Call_Option*” measuring the ratio of the present discounted value of the unpaid mortgage balance at the current quarterly mortgage interest rate⁹ relative to the value discounted at the contract interest rate.¹⁰

⁹The rate used is the average interest rate charged by lenders on new first mortgages reported by Freddie Mac’s market survey. This mortgage interest rate varies by quarter across five major US regions.

¹⁰See Appendix A for the specification of the “*Call_Option*” variable.

To value the put option analogously, we would measure the market value of each house quarterly and compute homeowner equity quarterly. Obviously, we do not observe the course of price variation for individual houses in the sample. We do, however, have access to a large sample of repeat (or paired) sales of single family houses in these 30 metropolitan areas (MSAs). This information is sufficient to estimate a weighted repeat sales house price index (WRS) separately for each of the 30 MSAs. The WRS index provides estimates of the course of house prices in each metropolitan area. It also provides an estimate of the variance in price for each house in the sample, by metropolitan area and elapsed time since purchase.¹¹

Estimates of the mean and variance of individual house prices, together with the unpaid mortgage balance (computed from the contract terms), permit us to estimate the distribution of homeowner equity quarterly for each observation. In particular, the variable “*Put_Option*” measures the probability that homeowner equity is negative, i.e., the probability that the put option is in the money.¹²

As proxies for other “trigger events,” we include measures of the quarterly unemployment rate and the annual divorce rate by state.¹³

Figure 1 summarizes the raw data used in the empirical analysis described below. Panel A displays the average (Kaplan-Meier) conditional prepayment rates, separately by the loan-to-value ratio at origination (LTV), as a function of duration. Conditional prepayment rates are slightly higher for higher LTV loans. Rates increase substantially after the first fifteen quarters. Panel C of Figure 1 displays average (Kaplan-Meier) conditional default rates by LTV. Note again that default rates increase substantially after about fifteen quarters. Note also that the default rates

¹¹See Appendix B for the specification of the house price indices and their volatilities.

¹²See Appendix A for the specification of the “*Put_Option*” variable.

¹³State unemployment data are reported in various issues of: US Department of Labor, “*Employment and Unemployment in States and Local Areas (Monthly)*” and in the “*Monthly Labor Review*”. State divorce data are reported in various issues of U.S. National Center for Health Statistics, “*Vital Statistics of the United States, Volume III, Marriage and Divorce*”, and in “*Statistical Abstract of the U.S.*”.

vary substantially by initial LTV. Default rates for 90 percent LTV loans are four or five times higher than default rates for 80 to 90 percent LTV loans. The default rates for these latter loans are, in turn, about twice as high as for those with LTV below 80 percent.

[Figure 1 about here.]

Finally, note that conditional default rates are quite low. Even for the riskiest class of loans, conditional default rates are no higher than two in a thousand in any quarter. Residential mortgages are relatively safe investments, and the period as a whole was one of generally rising house prices (keeping the put option out of the money).

Table I presents the means and standard deviations of the explanatory variables measured at origination and termination of the mortgage loans. The mean value of the prepayment option, “*Call_Option*,” is “out of the money” when mortgages were originated, but is much less so when the mortgages were terminated (presumably reflecting the fact that most prepayments arise because homeowners move for other reasons. See Quigley 1987). The mean value of the probability of negative equity, “*Put_Option*,” is quite low in general when mortgages were originated. The initial probability is about 0.007 for those mortgages that were ultimately terminated by prepayment, but the initial probability of negative equity is much larger for those loans that were ultimately terminated by default. In part, this difference reflects the much higher initial loan-to-value ratios of those mortgages ultimately terminated by default. Finally, at termination the defaulted mortgages are associated with substantially higher average unemployment rates and divorce rates than those mortgages terminated by prepayment.

[Table I about here.]

Table II presents the means and standard deviations of the explanatory variables measured at termination of the mortgage loans, separately by initial LTV categories. The differences in the values of the call option across LTV groups are insignificant. However, the put option values

are significantly different among different LTV groups, i.e., higher LTV ratios at origination are associated with higher probabilities of negative equity at the termination of the mortgage loans.

[Table II about here.]

Table II also presents cumulative prepayment and default rates at different ages of mortgage life by initial LTV categories. The differences in cumulative prepayment rates among different LTV categories are relatively small, but a higher initial LTV is strongly associated with a higher cumulative default rate. This strong association persists during different stages of the mortgage life.

4.1 Specifications and Results

Table III presents maximum likelihood estimates of the parameters of models of competing risks of mortgage prepayment and default. Estimates in this table assume prepayment and default risks are interdependent. However, the models do not address unobserved heterogeneity.

[Table III about here.]

Model 1 in Table II tests the “ruthless” model, i.e., Model I, as described in Section 2. The model includes only measures of the financial value of the prepayment and default options. The results provide support for the option theory in that the prepayment hazard increases when the call option is in the money, and a higher probability of negative equity increases the default hazard and reduces the prepayment hazard. The results also indicate that the estimated second order effect of the prepayment option is significant and positive, suggesting that after the interest rate drops below the critical point r^* as discussed in Section 2, the prepayment speed increases substantially.¹⁴

Model 2 in Table III extends the “ruthless” model by adding asymmetric information and the

¹⁴However, that is not the case in the default function for which the second term is essentially zero. It is also the case that low interest rates (a high value of *Call_Option*) lead to negative equity. We have estimated all the models with *Put_Option* computed from both market and par value of the mortgages and found no significant changes in any parameter estimates. See Appendix A.

trigger event variables, such as original LTV category, unemployment and divorce. The results show that financial motivation is still of paramount importance governing the prepayment and default behavior. In addition, the results suggest that borrowers' willingness to exercise financial options may be triggered or hindered by other events. For example, it suggests that higher default risks are associated with higher original LTV's. This is consistent with the argument in Section 2 (see Yezer, Phillips, and Trost 1994) that information is asymmetric, and riskier borrowers choose high LTV loans. The prepayment risk increases slightly as original LTV increases, except for the highest LTV category. For loans with original LTV over 90 percent, the prepayment risk is reduced. The estimates also show that unemployment and divorce are positive and highly significant in the default function, reflecting liquidity constraints and the effect of trigger events upon the exercise of put options.¹⁵

Table IV reports the maximum likelihood estimates of the interdependent competing risks of mortgage prepayment and default with unobserved heterogeneity as specified in Section 3. In Models 3 and 4, we assume that there are two populations among borrowers. The difference in riskiness between these two groups may be attributed to unmeasured house-specific factors (such as unexpected depreciation or appreciation of property values) as well as to borrower tastes or abilities. Each borrower may either belong to the high risk group or the low risk group. We do not observe directly the group to which an individual borrower belongs. Since unobserved heterogeneity may be correlated with the errors in the competing risks of prepayment and default hazard functions, we estimate the distribution of the unobserved heterogeneity jointly with the competing risks of prepayment and default hazard functions.

[Table IV about here.]

¹⁵We also added the difference between the coupon on the mortgage and the average coupon rate during the quarter in which the loan was originated to test (following the argument in section 2) whether high coupon loans prepay faster and/or default more. We found both signs to be positive, but not statistically significant; as a result we do not include relative coupon rate in any of the results presented in the tables.

Model 3 reestimates the “ruthless” model reported in Table III. The estimates still provide support for the predictions of option theory: the prepayment hazard increases when the call option is in the money; similarly a higher probability of negative equity increases the default hazard and reduces the prepayment hazard. However, the marginal effect of the prepayment option, “*Call_Option*,” reported in Table IV increases substantially — by about 20 percent compared to that reported in Table III. This suggests that estimating the prepayment risk without accounting for heterogeneity leads to a substantial underestimate of option-driven prepayment behavior. The estimates also show that there is a substantial and statistically significant difference between the two groups in exercising the prepayment option. The borrowers in the high risk group are about 4.73 times riskier than the borrowers in the low risk group in terms of prepayment risks (1.972/0.417). However, there is almost no difference between the two groups in terms of default risks (2.577/2.403).

Model 4 reestimates Model 2 reported in Table III. In general, the importance of the option values reported in Model 3 is confirmed. In addition, the unemployment variable is negative and highly significant in the prepayment function — indicating that liquidity constraints (which make refinancing more difficult for unemployed and divorced households) keep them from exercising in-the-money call options. It seems clear that the original LTV, unemployment and divorce may trigger or hinder the borrower’s willingness to exercise the options. These findings are analogous to those noted in Model 2 in Table III. Note that, in Model 4, after including trigger event variables explicitly in the prepayment and default hazard function, the estimated heterogeneity becomes less significant relative to its importance in Model 3. Nonetheless, we still find that unobserved heterogeneity is statistically significant in exercising the prepayment option, and the borrowers in the high risk group are about 4.58 times riskier than the borrowers in the low risk group in terms of prepayment risks. The results also show that by adding trigger event variables, Model 4 has a much better fit than Model 3, the “ruthless” model.

Table IV also reports estimates of two models which extend the Models 3 and 4 by allowing three mass points in the distribution of the unobserved heterogeneities. There are no significant effects on the estimation of the explicitly-specified explanatory variables. However, the three estimated location variables are significantly different from each other, and all the estimated mass points are significant in the prepayment function. The log likelihood values also suggest that Model 5 and Model 6 provide better fit to the data than Models 3 and 4, respectively.

The estimates from both Models 5 and 6 suggest that over forty percent of the borrowers are in the group most likely to exercise the mortgage prepayment option (e.g., $1/[1 + 1.252 + 0.119]$). About 5 percent of the borrowers are much slower in exercising the mortgage prepayment option (e.g., $0.119/[1 + 1.252 + 0.119]$). The behavior of the remaining half of the borrowers is somewhere in between these two extreme groups. The estimates also suggest that given the same market and economic environment (i.e., given the market interest rate, pattern of house price appreciation/depreciation rate, unemployment and divorce rates, etc.), the high risk group is about three times riskier than the intermediate group, and about twenty times riskier than the low risk group in terms of prepayment. However, the results also show that heterogeneity is less important among borrowers in terms of exercising the default option.¹⁶

Figure 2 graphs the average conditional prepayment and default rates by mortgage age estimated by Model 6 for the three groups. Panel A indicates that conditional prepayment rates increase from about 2 percent, on average, after 5 years, to about 6 percent after 8 years. However, the average masks quite different behavior among the three groups. For the middle group, the estimated prepayment rate increases from about 1.5 percent to 4 percent, while for the third (low risk) group

¹⁶We have sought to extend the models reported in Table IV to estimate additional mass points in the distribution of unobserved heterogeneity. When four mass points are estimated, the value of the log likelihood function is unchanged (to five significant digits), and several of the estimated location and mass points are insignificant. The fraction of borrowers classified into the high risk extreme (41 percent) is about the same; the fraction classified into the low risk extreme is about zero (but the coefficient on the mass point is insignificant). When five or six mass points are estimated, the coefficients are insignificant. In all these estimations, however, the coefficients of the option variables and the other parameters are virtually unchanged.

the conditional prepayment rate changes only a little. Among the first (the high risk) group, however, conditional prepayment rates increase from about 3 percent after 5 years to about 11 percent after 8 years.

[Figure 2 about here.]

Panel B reports the average conditional default rates estimated for the three groups. The panel confirms that inverted U shaped function implied by theory (e.g., Quigley and Van Order 1995), but again there are large behavioral differences among groups. At the peak, after about 6 years, conditional default rates are less than 0.02 percent for those in group 1 and about 5 times as large for those in groups 3. Unobserved heterogeneity matters a lot in the behavior of mortgage holders.

Table V reports the results of estimating the mortgage prepayment risk and default risk functions independently using three and two mass points respectively (the best fitting models). The qualitative pattern of the estimated coefficients is similar. However, it is quite clear that, for this sample at least, ignoring the interdependence between prepayment risk and default risk has a substantial effect upon the accuracy of the estimation, especially for the default function.¹⁷

[Table V about here.]

Figure 3 summarizes the predictions of the various specifications of the competing risks models, indicating the conditional prepayment and default rates predicted by Model 2 (interdependent risks, no heterogeneity), Model 5 (frictionless model, interdependent risks, heterogeneity), Model 6 (interdependent risks, heterogeneity), and Model 8 (independent risks, heterogeneity). Again the mean value of the simulated conditional prepayment and default rates are presented here. The predictions of the models are similar, but they are certainly not identical. The specification

¹⁷Model 7 and Model 8 are estimated based on the same sample of (22,294) loans that are used for estimating Model 5 and Model 6. Table V reports that for Model 8, the log likelihood values are -80,935 and -417,644 for prepayment and default functions, respectively (compared to -74,530 in Model 6). The large negative value of the log likelihood function in the estimation of the independent default hazard model arises mainly because on 1.6% of the sample are defaulted loans.

preferred on statistical grounds, Model 6, does yield substantially different predictions.

[Figure 3 about here.]

Figure 4 reports the cumulative prepayment and default rates estimated by Model 6 for three origination year cohorts: 1978:IV, 1980:IV, and 1982:IV. The figure also reports the raw unadjusted Kaplan-Meier cumulative rates. The economic model tracks the raw data well, on average, but there is more volatility in the unadjusted data than in the predictions of the model. In particular, the covariates do not capture the rapid increase in termination by prepayment during 1985-1986.

[Figure 4 about here.]

4.2 Regional Variation

In this section we present additional estimates of the interdependent-competing-risks-model-with-heterogeneity for two regions, California and Texas. The California economy was strong and growing throughout most of the sample period, while the Texas economy was a victim of the oil crisis and a prolonged depression. For California, we draw a simple random sample of ten percent (22,374 loans) out of the population of (222,656) loans. For Texas, we analyze the full sample of (29,310) loans.

Table VI reports the means and standard deviations of the explanatory variables in these two states at mortgage origination and at termination. When all loans are compared at origination with the national sample (Table I), the average value of the call option is very similar, and the initial LTV's are not very different. However, at origination the probability of negative equity is only a third as large for California loans as for the US as a whole, while for Texas the probability of negative equity is more than twice as large as elsewhere. The qualitative pattern of the averages for California and Texas, however, are similar to those reported in Table I for the US as a whole.

[Table VI about here.]

Despite these patterns, there are substantial quantitative differences between the two states. The average value of the call option is larger (i.e., less negative) in California at origination and at termination for mortgage of all types. Conversely, the average probability of negative equity is larger in Texas at origination for mortgages of all types. In part, this reflects the higher average LTV in Texas.

In both states, the average unemployment rate at termination by default is higher than at termination by prepayment, but in Texas the average unemployment rate at termination is almost forty percent higher than at origination. Differences between the two states in the averages of the variable measuring the value of the put option are particularly striking. In California, for those mortgages terminating by default, the probability of negative equity at origination is about 2 percent; the probability of negative equity at termination is about 2.5 percent. In Texas, however, for defaulted mortgages, the probability of negative equity is more than 5 percent at origination (raising real questions about the oversight provided by lending organizations, mostly savings and loan institutions, during the period). At termination, the probability of negative equity is almost 27 percent.

Table VII reports the coefficient estimates of the behavioral model for California and Texas. The model is estimated to include a bivariate distribution of unobserved heterogeneous error terms.¹⁸ For convenience the relevant model from Table IV for the US as a whole is reproduced.

[Table VII about here.]

With only three exceptions involving insignificant coefficients, the pattern of the estimated coefficients is the same for the two states, but the magnitudes of the estimates vary. Each of the key financial variables exerts a substantial direct effect upon the exercise of both options. For

¹⁸Again, attempts to estimate three or more mass points failed. For California, the maximum likelihood estimation with three mass points yields imprecise estimates, and the log likelihood ratio remains the same as in Table VII. For Texas, the estimation with 3 mass points does not converge at all.

Texas loans, in contrast to California loans or US loans in general, there appears to be substantial heterogeneity in default behavior (However, the t statistics associated with LOC1 and LOC2 are barely significant). Individuals in the first group are almost 20 times as likely to default, *ceteris paribus* than those classified in the second group. This difference is not precisely estimated, but it suggests substantially different behavior among Texas borrowers.

Figure 5 presents the prepayment and default rates for California and Texas estimated using the separate models reported in Table VII. Panel A reports the prepayment rates, illustrating the higher conditional rates in California after about six years, while Panel B illustrates the much higher conditional default rates predicted in Texas after about six years. Panels C and D report the simulated average prepayment and default rates using the coefficients from the national model (columns 1 and 2 of Table VII) and the realizations in the data for California and Texas. The projected differences for the two states are qualitatively similar, but the national model understates the divergence in the behavior of mortgage holders in the two states. Regional differences matter a lot, even beyond the differences in the course of housing and labor markets.

[Figure 5 about here.]

5 Conclusion

This paper has presented a unified model of the competing risks of mortgage termination by prepayment and default. The model considers these two hazards as dependent competing risks and estimates them jointly. The model also accounts for the unobserved heterogeneity among borrowers, and estimates the unobserved heterogeneity simultaneously with the parameters and baseline hazards associated with prepayment and default functions.

The substantive results of the analysis provide support for the contingent claims model which predicts the exercise of financial options. The financial value of the call option is strongly associated

with exercise of the prepayment option, and the probability that the put option is in the money is strongly associated with exercise of the default option. The results also provide strong support for the interdependence of the decisions to prepay and to default on mortgage obligations.

The results also show that there exists significant heterogeneity among mortgage borrowers, particularly regarding prepayment. The results indicate that ignoring heterogeneity among mortgage borrowers leads to serious errors in estimating the prepayment risk. Moreover, forecasts which ignore the interdependence between default and prepayment risks and which estimate these two risks separately lead to serious errors in estimating the default risk.

The results also point to differences in prepayment and default behavior across regions, arising from variations in institutions or behavioral responses as well as variations in market conditions.

Further, the results suggest that, holding other things constant, those who have chosen high initial LTV loans are more likely to exercise options in the mortgage market — prepayment as well as default. It appears that the initial LTV ratio, known at the time mortgages are issued, may well reflect investor preferences for risk in the market for mortgages on owner-occupied housing. Finally, unemployment and divorce rates have significant effects on default. Taken together, all these results suggest that the simple option model is not enough.

The Wharton School, University of Pennsylvania, Philadelphia, PA 19104-6330, U.S.A.;

ydeng@wharton.upenn.edu.

University of California, Berkeley, CA 94720-3880, U.S.A.; quigley@econ.berkeley.edu.

Freddie Mac, 8200 Jones Branch Drive, McLean, VA 22102, U.S.A.;

Robert_van_order@FreddieMac.com.

Appendix

A Specifications of “Call_Option” and “Put_Option” Variables

The variables measuring the value of the put and call options are defined by the initial terms of the mortgage and current market conditions. For fixed-rate level-payment mortgage i with an original loan amount of O_i , a mortgage note rate of r_i , and a monthly payment of P_i , in principal and interest, the mortgage term in quarters, TM_i , is:

$$(10) \quad TM_i = \frac{\log\left(\frac{P_i - O_i \times (r_i/1200)}{P_i}\right)}{\log\left(\frac{1}{1 + r_i/1200}\right) \times 3},$$

At each quarter k after origination at time τ_i , the local market interest rate is m_{j,τ_i+k} , where j indexes the local region. The “Call_Option” variable is defined as the difference in the present values of the payment stream at the mortgage note rate and the current interest rate:

$$(11) \quad \begin{aligned} Call_Option_{i,k_i} &= \frac{\sum_{t=1}^{TM_i-k_i} \frac{P_i \times 3}{(1 + m_{j,\tau_i+k_i}/400)^t} - \sum_{t=1}^{TM_i-k_i} \frac{P_i \times 3}{(1 + r_i/400)^t}}{\sum_{t=1}^{TM_i-k_i} \frac{P_i \times 3}{(1 + m_{j,\tau_i+k_i}/400)^t}} \\ &= \frac{V_{i,m_{j,\tau_i+k_i}} - V_{i,r_i}^*}{V_{i,m_{j,\tau_i+k_i}}}. \end{aligned}$$

As shown in Appendix B, the initial market value M_i of property i , purchased at a cost of C_i at time τ_i and evaluated k_i quarters thereafter is:

$$(12) \quad M_{i,k_i} = C_i \left(\frac{I_{j,\tau_i+k_i}}{I_{j,\tau_i}} \right)$$

where the term in parentheses follows a log normal distribution.

The ratio of equity to market value, E_i , of the property i is:

$$(13) \quad E_{i,k_i} = \frac{M_{i,k_i} - V_{i,m_j,\tau_i+k_i}}{M_{i,k_i}}.$$

The “*Put_Option*” variable is defined as the probability that equity is negative.

$$(14) \quad \begin{aligned} Put_Option_{i,k_i} &= prob(E_{i,k_i} < 0) \\ &= \Phi \left(\frac{\log V_{i,m_j,\tau_i+k_i} - \log M_{i,k_i}}{\sqrt{\omega^2}} \right), \end{aligned}$$

where $\Phi(\cdot)$ is cumulative standard normal distribution function, and ω^2 is an estimated variance defined in Appendix B.

As indicated in footnote 14 in the text, we also estimated the model with “*Put_Option*” using the par value of each mortgages, V_{i,r_i}^* as defined in (11). When the put option is valued in this way,

$$(15) \quad Put_Option_{i,k_i}^* = \Phi \left(\frac{\log V_{i,r_i}^* - \log M_{i,k_i}}{\sqrt{\omega^2}} \right),$$

the results reported in the text are unchanged.

B The Weighted Repeated Sales (WRS) House Price Index

Housing price indices and their volatilities are estimated according to the three stage procedure suggested by Case and Shiller (1987) and modified by Quigley and Van Order (1995). The model assumes that log price for i th house at time t is given by

$$(16) \quad P_{it} = I_t + H_{it} + N_{it}$$

where I_t is the logarithm of the regional housing price level, H_{it} is a Gaussian random walk, such that,

$$\begin{aligned} E[H_{i,t+k} - H_{it}] &= 0, \\ E[H_{i,t+k} - H_{it}]^2 &= k\sigma_{\eta_1}^2 + k^2\sigma_{\eta_2}^2; \end{aligned}$$

and N_{it} is white noise, such that,

$$\begin{aligned} E[N_{it}] &= 0, \\ E[N_{it}]^2 &= \frac{1}{2}\sigma_{\nu}^2. \end{aligned}$$

The model is estimated on paired sales of owner occupied housing. In the first stage, the log price of the second sale minus the log price of the first sale is regressed on a set of dummy variables, one for each time period in the sample except the first period. The dummy variables have values of +1 for the quarter of the second sale, -1 for the quarter of the first sale, and zeros otherwise. (This follows Bailey, Muth, and Nourse (1963) exactly.)

In the second stage, the squared residuals (ω^2) from each observation in the first stage are

regressed upon k and k^2

$$(17) \quad \omega^2 = A + Bk + Ck^2,$$

where k is the interval between the first and second sale. The coefficients A , B , and C are estimates of σ_ν^2 , $\sigma_{\eta_1}^2$, and $\sigma_{\eta_2}^2$ respectively.

In the third stage, the stage one regression is reestimated by GLS with weights $(A + Bk + Ck^2)^{1/2}$. The estimated log price level difference $(\widehat{I}_{t+k} - \widehat{I}_t)$ is normally distributed with mean $(I_{t+k} - I_t)$, and variance $(k\sigma_{\eta_1}^2 + k^2\sigma_{\eta_2}^2 + \sigma_\nu^2)$. Denote $msa_\tau = \exp(\widehat{I}_\tau)$ as the estimated regional housing price index; then, in the k th quarter subsequent to purchase, $\log\left(\frac{msa_{\tau+k}}{msa_\tau}\right)$ is normally distributed with mean $(I_{\tau+k} - I_\tau)$ and variance $(k\sigma_{\eta_1}^2 + k^2\sigma_{\eta_2}^2 + \sigma_\nu^2)$.

Means and variances are estimated for each of 30 major MSA regions using samples of paired sales. There are about four million paired sales in the Freddie Mac data base.

References

- ARCHER, W. R., AND D. C. LING (1993): "Pricing Mortgage-backed Securities: Integrating Optimal Call and Empirical Models of Prepayment," *Journal of The American Real Estate and Urban Economics Association*, 21(4), 373–404.
- ARCHER, W. R., D. C. LING, AND G. A. MCGILL (1996): "The Effect of Income and Collateral Constraints on Residential Mortgage Terminations," *Regional Science and Urban Economics*, 26(3-4), 235–261.
- BAILEY, M. J., R. F. MUTH, AND H. O. NOURSE (1963): "A Regression Method for Real Estate Price Index Construction," *Journal of The American Statistical Association*, 58, 933–942.
- BLACK, F., AND M. S. SCHOLES (1973): "The Pricing of Options and Corporate Liabilities," *Journal of Political Economy*, 81, 637–654.
- BRENNAN, M. J., AND E. S. SCHWARTZ (1985): "Determinants of GNMA Mortgage Prices," *Journal of The American Real Estate and Urban Economics Association*, 13, 209–228.
- BUSER, S. A., AND P. H. HENDERSHOTT (1984): "Pricing Default Free Mortgages," *Housing Finance Review*, 3, 405–429.
- CASE, K. E., AND R. J. SHILLER (1987): "Prices of Single-Family Homes Since 1970: New Indexes for Four Cities," *New England Economic Review*, pp. 45–56.
- COX, D. R., AND D. OAKES (1984): *Analysis of Survival Data*, Monographs on Statistics and Applied Probability. Chapman and Hall, London.
- COX, J. C., J. E. INGERSOLL, AND S. A. ROSS (1985): "A Theory of the Term Structure of Interest Rates," *Econometrica*, 53, 385–467.

- CUNNINGHAM, D. F., AND P. H. HENDERSHOTT (1984): "Pricing FHA Mortgage Default Insurance," *Housing Finance Review*, 13, 373–392.
- DENG, Y. (1997): "Mortgage Termination: An Empirical Hazard Model with Stochastic Term Structure," *The Journal of Real Estate Finance and Economics*, 14(3), 309–331.
- DENG, Y., J. M. QUIGLEY, AND R. VAN ORDER (1996): "Mortgage Default and Low Down-payment Loans: The Cost of Public Subsidy," *Regional Science and Urban Economics*, 26(3-4), 263–285.
- DUNN, K. B., AND J. J. MCCONNELL (1981): "Valuation of Mortgage-Backed Securities," *The Journal of Finance*, 36, 599–617.
- EPPERSON, J. F., J. B. KAU, D. C. KEENAN, AND W. J. MULLER III (1985): "Pricing Default Risk in Mortgages," *Journal of The American Real Estate and Urban Economics Association*, 13, 261–272.
- FINDLEY, M. C., AND D. R. CAPOZZA (1977): "The Variable Rate Mortgage: An Option Theory Perspective," *Journal of Money, Credit and Banking*, 9(2), 356–364.
- FOSTER, C., AND R. VAN ORDER (1984): "An Option-Based Model of Mortgage Default," *Housing Finance Review*, 3(4), 351–372.
- (1985): "FHA Terminations: A Prelude to Rational Mortgage Pricing," *Journal of The American Real Estate and Urban Economics Association*, 13(3), 273–291.
- GREEN, J., AND J. B. SHOVEN (1986): "The Effect of Interest Rates on Mortgage Prepayments," *Journal of Money, Credit and Banking*, 18, 41–50.
- HAN, A., AND J. A. HAUSMAN (1990): "Flexible Parametric Estimation of Duration and Competing Risk Models," *Journal of Applied Econometrics*, 5, 1–28.

- HARDING, J. P. (1997): “Estimating Borrower Mobility from Observed Prepayments,” *Real Estate Economics*, 25(3), 347–371.
- HENDERSHOTT, P. H., AND R. VAN ORDER (1987): “Pricing Mortgages: An Interpretation of the Models and Results,” *Journal of Financial Services Research*, 1, 77–111.
- KAU, J. B., AND D. C. KEENAN (1995): “An Overview of the Option-Theoretic Pricing of Mortgages,” *Journal of Housing Research*, 6(2), 217–244.
- (1996): “Patterns of Rational Default,” Working Paper, The University of Georgia, Athens, GA.
- KAU, J. B., D. C. KEENAN, AND T. KIM (1993): “Transaction Costs, Suboptimal Termination and Default Probabilities,” *Journal of The American Real Estate and Urban Economics Association*, 21(3), 247–263.
- KAU, J. B., D. C. KEENAN, W. J. MULLER, AND J. F. EPPERSON (1992): “A Generalized Valuation Model for Fixed-Rate Residential Mortgages,” *Journal of Money, Credit and Banking*, 24(3), 279–299.
- (1995): “The Valuation at Origination of Fixed Rate Mortgages with Default and Prepayment,” *The Journal of Real Estate Finance and Economics*, 11(1), 5–36.
- MCCALL, B. P. (1996): “Unemployment Insurance Rules, Joblessness, and Part-Time Work,” *Econometrica*, 64(3), 647–682.
- MERTON, R. C. (1973): “Theory of Rational Option Pricing,” *Bell Journal of Economics and Management Science*, 4, 141–183.
- QUERCIA, R. G., AND M. A. STEGMAN (1992): “Residential Mortgage Default: A Review of the Literature,” *Journal of Housing Research*, 3, 341–379.

- QUIGLEY, J. M. (1987): "Interest Rate Variations, Mortgage Prepayments and Household Mobility," *The Review of Economics and Statistics*, 69(4), 636–643.
- QUIGLEY, J. M., AND R. VAN ORDER (1990): "Efficiency in the Mortgage Market: The Borrower's Perspective," *Journal of The American Real Estate and Urban Economics Association*, 18(3), 237–252.
- (1995): "Explicit Tests of Contingent Claims Models of Mortgage Default," *The Journal of Real Estate Finance and Economics*, 11(2), 99–117.
- SCHWARTZ, E. S., AND W. N. TOROUS (1989): "Prepayment and the Valuation of Mortgage-Backed Securities," *The Journal of Finance*, 44(2), 375–392.
- (1993): "Mortgage Prepayment and Default Decisions: a Poisson Regression Approach," *Journal of The American Real Estate and Urban Economics Association*, 21(4), 431–449.
- STANTON, R. (1995): "Rational Prepayment and the Valuation of Mortgage-Backed Securities," *The Review of Financial Studies*, 8(3), 677–708.
- SUEYOSHI, G. (1992): "Semiparametric Proportional Hazards Estimation of Competing Risks Models with Time-varying Covariates," *Journal of Econometrics*, 51(1-2), 25–58.
- TITMAN, S., AND W. N. TOROUS (1989): "Valuing Commercial Mortgages: An Empirical Investigation of the Contingent Claims Approach to Pricing Risky Det," *The Journal of Finance*, 44, 345–373.
- VANDELL, K. D. (1993): "Handing Over the Keys: A Perspective on Mortgage Default Research," *Journal of The American Real Estate and Urban Economics Association*, 21(3), 211–246.

YEZER, A. M., R. F. PHILLIPS, AND R. P. TROST (1994): "Bias in Estimates of Discrimination and Default in Mortgage Lending: The Effects of Simultaneity and Self-Selection," *The Journal of Real Estate Finance and Economics*, 9(3), 179–215.

TABLE I.
DESCRIPTIVE STATISTICS ON MORTGAGE LOANS MEAN VALUES AT ORIGINATION AND TERMINATION

Variable	At Origination				At Termination	
	All Loans	Prepaid	Defaulted	Other*	Prepaid	Defaulted
Call Option (fraction of contract value)	-0.0529 (0.0067)	-0.0559 (0.0073)	-0.0746 (0.0102)	-0.0427 (0.0045)	-0.0265 (0.0329)	0.0321 (0.0273)
Put Option (probability of negative equity)	0.0072 (0.0005)	0.0069 (0.0005)	0.0371 (0.0030)	0.0062 (0.0004)	0.0067 (0.0013)	0.0918 (0.0283)
Squared Term of Call Option	0.0095 (0.0005)	0.0104 (0.0006)	0.0157 (0.0009)	0.0063 (0.0004)	0.0336 (0.0035)	0.0283 (0.0021)
Squared Term of Put Option	0.0006 (0.0000)	0.0005 (0.0000)	0.0044 (0.0002)	0.0004 (0.0000)	0.0014 (0.0005)	0.0367 (0.0162)
State Divorce Rate (percent)	5.4486 (0.8015)	5.4448 (0.7659)	5.8430 (0.5083)	5.4349 (0.9105)	4.8635 (0.5585)	5.2587 (0.3650)
State Unemployment Rate (percent)	6.8605 (2.4960)	6.9609 (2.5356)	6.88165 (3.6764)	6.5648 (2.1951)	6.6796 (2.8578)	7.6085 (3.5006)
Initial Loan-To-Value Ratio (LTV)	0.7657 (0.0240)	0.7649 (0.0240)	0.8900 (0.0060)	0.7597 (0.0239)	-	-
No. of Observations	22,294	16,402	363	5,529	16,402	363

Note: Standard deviations are in parentheses.

* Other includes matured mortgages as well as those outstanding at the end of the observation period.

TABLE II.
DESCRIPTIVE STATISTICS ON MORTGAGE LOANS
MEAN VALUES AT TERMINATION* AND CUMULATIVE RATES BY INITIAL LTV CATEGORY

Variable	All Loans	LTV≤75	75<LTV≤80	80<LTV≤90	LTV≥90
A. Mean Value					
Call Option (fraction of contract value)	-0.0057 (0.0270)	0.0000 (0.0267)	-0.0161 (0.0259)	-0.0030 (0.0273)	0.0040 (0.0296)
Put Option (probability of negative equity)	0.0067 (0.0016)	0.0006 (0.0002)	0.0019 (0.0001)	0.0105 (0.0016)	0.0334 (0.0100)
Squared Term of Call Option	0.0270 (0.0028)	0.0267 (0.0028)	0.0262 (0.0028)	0.0273 (0.0028)	0.0297 (0.0030)
Squared Term of Put Option	0.0016 (0.0007)	0.0002 (0.0000)	0.0001 (0.0000)	0.0017 (0.0005)	0.0111 (0.0051)
State Unemployment Rate (percent)	7.1593 (3.2006)	7.2773 (3.3740)	7.2123 (3.1218)	7.1006 (3.1085)	6.7308 (2.9797)
State Divorce Rate (percent)	4.8068 (0.6165)	4.7378 (0.6066)	4.8044 (0.5152)	4.8498 (0.5878)	4.9498 (0.8902)
B. Cumulative Rates					
Cumulative Prepayment in 5 years (percent)	18.8	19.8	17.0	18.6	21.7
Cumulative Prepayment in 10 years (percent)	57.0	55.6	56.7	60.2	55.8
Cumulative Prepayment in 15 years (percent)	73.2	72.6	74.4	75.0	67.7
Cumulative Default in 5 years (percent)	0.7	0.1	0.4	1.4	1.8
Cumulative Default in 10 years (percent)	1.4	0.2	0.8	2.6	5.1
Cumulative Default in 15 years (percent)	1.6	0.2	0.8	2.8	6.1
No. of Observations	22,294	7,420	7,542	4,988	2,344

Note: Standard deviations are in parentheses.

* Mean value of variables at termination or at the end of the observation period.

TABLE III.
 MAXIMUM LIKELIHOOD ESTIMATES FOR COMPETING RISKS
 OF MORTGAGE PREPAYMENT AND DEFAULT WITHOUT HETEROGENEITY

	Model 1		Model 2	
	Prepayment	Default	Prepayment	Default
Call Option (fraction of contract value)	4.795 (124.84)	6.283 (20.10)	4.837 (118.61)	6.768 (19.78)
Put Option (probability of negative equity)	-3.607 (8.76)	15.286 (19.79)	-3.495 (7.79)	8.662 (9.19)
Squared Term of Call Option	2.663 (20.76)	-0.359 (0.32)	2.695 (20.49)	0.236 (0.20)
Squared Term of Put Option	3.476 (5.45)	-16.343 (14.76)	3.373 (5.00)	-9.199 (7.42)
0.6<LTV≤0.75			0.035 (1.39)	1.384 (2.16)
0.75<LTV≤0.8			0.060 (2.69)	2.231 (3.75)
0.8<LTV≤0.9			0.077 (3.19)	3.146 (5.36)
LTV>0.9			-0.056 (1.89)	3.518 (5.98)
State Unemployment Rate (percent)			-0.007 (1.37)	0.097 (3.00)
State Divorce Rate (percent)			0.032 (3.10)	0.415 (4.59)
LOC	1.330 (111.42)	2.517 (13.28)	0.803 (18.45)	0.059 (1.25)
Log Likelihood	-74,981		-74,813	

Note: T-ratios are in parentheses. All models are estimated by ML approach with flexible baseline hazard function. Prepayment and default functions are considered as correlated competing risks and they are estimated jointly. Restrictions of homogeneous error terms were imposed during the maximum likelihood estimation. LOC is the location parameter of the error term.

TABLE IV.
 MAXIMUM LIKELIHOOD ESTIMATES FOR COMPETING RISKS
 OF MORTGAGE PREPAYMENT AND DEFAULT WITH UNOBSERVED HETEROGENEITY

	Model 3		Model 4		Model 5		Model 6	
	Prepay	Default	Prepay	Default	Prepay	Default	Prepay	Default
Call Option (fraction of contract value)	5.810 (89.90)	6.324 (16.40)	5.779 (88.51)	6.749 (17.06)	5.921 (83.60)	6.550 (17.90)	5.891 (81.73)	6.877 (18.02)
Put Option (probability of negative equity)	-4.700 (10.06)	15.275 (19.82)	-4.312 (8.53)	8.670 (9.24)	-5.110 (10.61)	16.891 (19.05)	-4.501 (8.60)	9.415 (9.30)
Squared Term of Call Option	4.076 (23.96)	-0.269 (0.23)	4.133 (23.96)	0.194 (0.16)	4.135 (23.98)	1.057 (0.88)	4.242 (23.98)	1.032 (0.81)
Squared Term of Put Option	4.656 (6.83)	-16.333 (14.70)	4.268 (5.94)	-9.207 (7.44)	5.146 (7.40)	-17.760 (14.66)	4.539 (6.17)	-9.882 (7.65)
0.6<LTV≤0.75			0.019 (0.60)	1.385 (2.15)			0.018 (0.51)	1.351 (2.10)
0.75<LTV≤0.8			0.060 (2.06)	2.230 (3.73)			0.053 (1.74)	2.194 (3.67)
0.8<LTV≤0.9			0.078 (2.46)	3.146 (5.33)			0.068 (2.05)	3.103 (5.25)
LTV>0.9			-0.011 (0.29)	3.516 (5.94)			-0.026 (0.65)	3.471 (5.85)
State Unemployment Rate (percent)			-0.029 (5.49)	0.097 (2.89)			-0.036 (6.36)	0.103 (3.03)
State Divorce Rate (percent)			-0.005 (0.43)	0.416 (4.55)			-0.016 (1.20)	0.424 (4.57)
LOC1	1.972 (37.60)	2.577 (7.43)	1.696 (12.95)	0.058 (1.15)	2.803 (11.46)	0.036 (0.09)	2.619 (7.82)	0.015 (0.58)
LOC2	0.417 (15.23)	2.402 (4.21)	0.370 (11.23)	0.060 (1.25)	0.972 (10.42)	3.805 (9.23)	0.859 (7.72)	0.080 (1.24)
LOC3					0.135 (3.70)	0.221 (1.03)	0.116 (3.19)	0.009 (0.73)
MASS2			0.335 (10.28)	0.379 (10.26)		1.304 (3.69)		1.252 (3.84)
MASS3						0.132 (2.85)		0.119 (2.55)
Log Likelihood			-74,708	-74,560		-74,673		-74,530

Note: T-ratios are in parentheses. All models are estimated by ML approach with flexible baseline hazard function. Prepayment and default functions are considered as correlated competing risks and they are estimated jointly. A bivariate distribution of unobserved heterogeneous error terms is also estimated simultaneously with the competing risks hazard functions. LOC1, LOC2 and LOC3 are the location parameters of the error distribution. MASS1, MASS2 and MASS3 are the mass points associated with LOC1, LOC2 and LOC3, respectively. MASS1 is normalized to 1.0 during the estimation.

TABLE V.
 MAXIMUM LIKELIHOOD ESTIMATES FOR INDEPENDENT RISKS OF
 MORTGAGE PREPAYMENT AND DEFAULT WITH UNOBSERVED HETEROGENEITY

	Model 7		Model 8	
	Prepayment	Default	Prepayment	Default
Call Option (fraction of contract value)	6.002 (83.51)	8.348 (21.07)	5.976 (82.24)	8.520 (21.34)
Put Option (probability of negative equity)	-3.989 (8.37)	15.743 (17.96)	-3.622 (7.03)	8.189 (7.83)
Squared Term of Call Option	4.287 (24.53)	4.242 (3.20)	4.383 (24.62)	3.374 (2.57)
Squared Term of Put Option	4.260 (6.12)	-16.803 (12.78)	3.911 (5.33)	-9.042 (6.23)
0.6<LTV≤0.75			0.020 (0.60)	1.327 (2.07)
0.75<LTV≤0.8			0.059 (1.95)	2.372 (3.98)
0.8<LTV≤0.9			0.083 (2.52)	3.370 (5.74)
LTV>0.9			0.009 (0.22)	3.333 (5.66)
State Unemployment Rate (percent)			-0.033 (5.96)	0.166 (5.04)
State Divorce Rate (percent)			-0.006 (0.46)	0.390 (4.24)
LOC1	2.630 (11.92)	10.857 (7.05)	2.308 (8.16)	0.144 (1.23)
LOC2	0.901 (8.28)	0.506 (1.97)	0.759 (7.13)	0.011 (0.99)
LOC3	0.109 (2.78)		0.095 (2.73)	
MASS2	1.017 (3.52)	0.628 (3.42)	1.033 (3.87)	0.344 (2.31)
MASS3	0.100 (2.37)		0.099 (2.39)	
Log Likelihood	-80,968	-417,754	-80,935	-417,644

Note: T-ratios are in parentheses. All models are estimated by ML approach with flexible baseline hazard function. Prepayment and default functions are estimated separately. A univariate distribution of unobserved heterogeneous error terms is also estimated simultaneously with the prepayment or default hazard functions. LOC1, LOC2 and LOC3 are the location parameters of the error distribution. MASS1, MASS2 and MASS3 are the mass points associated with LOC1, LOC2 and LOC3, respectively. MASS1 is normalized to 1.0 during the estimation.

TABLE VI.
DESCRIPTIVE STATISTICS ON CALIFORNIA AND TEXAS MORTGAGE LOANS
MEAN VALUES AT ORIGINATION AND TERMINATION

Variable	At Origination				At Termination	
	All Loans	Prepaid	Defaulted	Other*	Prepaid	Defaulted
A. California						
Call Option (fraction of contract value)	-0.0505 (0.0055)	-0.0526 (0.0060)	-0.0628 (0.0095)	-0.0414 (0.0033)	-0.0078 (0.0293)	0.1000 (0.0214)
Put Option (probability of negative equity)	0.0027 (0.0002)	0.0027 (0.0002)	0.0194 (0.0013)	0.0013 (0.0001)	0.0026 (0.0001)	0.0246 (0.0012)
State Unemployment Rate (percent)	7.3038 (1.4484)	7.3018 (1.5275)	7.4231 (1.6332)	7.3015 (1.1215)	6.6792 (1.7284)	7.0468 (1.3618)
State Divorce Rate (percent)	5.7825 (0.0534)	5.7652 (0.0552)	5.5526 (0.0310)	5.8712 (0.0222)	5.0259 (0.2258)	5.1504 (0.0785)
Initial Loan-To-Value Ratio (LTV)	0.7581 (0.0213)	0.7575 (0.0217)	0.8655 (0.0056)	0.7514 (0.0203)	-	-
No. of Observations	22,374	17,598	359	4,417	17,598	359
B. Texas						
Call Option (fraction of contract value)	-0.0616 (0.0095)	-0.0631 (0.0098)	-0.0889 (0.0185)	-0.0552 (0.0074)	-0.0680 (0.0403)	0.0364 (0.0178)
Put Option (probability of negative equity)	0.0159 (0.0010)	0.0119 (0.0008)	0.0531 (0.0028)	0.0151 (0.0009)	0.0507 (0.0212)	0.2690 (0.0879)
State Unemployment Rate (percent)	5.1320 (0.7868)	5.2463 (0.9558)	5.2709 (1.4325)	4.9635 (0.4193)	7.2736 (1.6342)	7.3154 (1.0645)
State Divorce Rate (percent)	6.4923 (0.0384)	6.5083 (0.0584)	6.5674 (0.0543)	6.4556 (0.0519)	5.9555 (0.0923)	5.7162 (0.0583)
Initial Loan-To-Value Ratio (LTV)	0.8007 (0.0267)	0.7828 (0.0274)	0.9086 (0.0084)	0.8063 (0.0265)	-	-
No. of Observations	29,310	15,364	1,919	12,027	15,364	1,919

Note: Standard deviations are in parentheses.

* "Other" includes matured mortgages as well as those outstanding at the end of the observation period.

TABLE VII.
COMPARISON OF PREPAYMENT AND DEFAULT RATES
AMONG US, CALIFORNIA AND TEXAS LOANS*

	US		California		Texas	
	Prepayment	Default	Prepayment	Default	Prepayment	Default
Call Option (fraction of contract value)	5.779 (88.51)	6.750 (17.06)	5.769 (97.84)	9.081 (21.39)	5.269 (68.22)	7.503 (27.92)
Put Option (probability of negative equity)	-4.312 (8.53)	8.669 (9.24)	-11.837 (8.58)	20.872 (4.73)	-1.917 (10.80)	4.892 (15.24)
Squared Term of Call Option	4.133 (23.96)	0.193 (0.15)	3.568 (19.11)	1.869 (1.34)	3.421 (20.61)	1.430 (1.57)
Squared Term of Put Option	4.268 (5.94)	-9.206 (7.44)	45.372 (4.74)	-92.270 (3.33)	1.791 (7.68)	-2.676 (6.78)
0.6<LTV≤0.75	0.019 (0.60)	1.385 (2.15)	0.057 (2.01)	2.802 (3.84)	0.046 (1.39)	1.136 (5.45)
0.75<LTV≤0.8	0.060 (2.06)	2.230 (3.73)	-0.006 (0.24)	2.955 (4.12)	-0.005 (0.17)	1.493 (8.26)
0.8<LTV≤0.9	0.078 (2.46)	3.146 (5.33)	0.074 (2.65)	3.747 (5.23)	-0.043 (1.37)	2.045 (11.91)
LTV>0.9	-0.011 (0.29)	3.517 (5.94)	0.023 (0.45)	4.193 (5.77)	-0.322 (10.43)	2.759 (16.59)
State Unemployment Rate (percent)	-0.029 (5.49)	0.097 (2.89)	-0.017 (2.73)	-0.151 (2.47)	0.011 (1.48)	-0.115 (4.47)
State Divorce Rate (percent)	-0.005 (0.43)	0.416 (4.55)	0.527 (23.34)	0.467 (1.89)	0.368 (11.05)	0.265 (2.52)
LOC1	1.696 (12.95)	0.058 (1.15)	0.106 (8.00)	0.035 (0.70)	0.104 (4.38)	0.717 (1.56)
LOC2	0.370 (11.23)	0.060 (1.25)	0.020 (3.54)	0.001 (0.30)	0.021 (4.04)	0.036 (1.46)
MASS2	0.379 (10.26)		0.061 (3.44)		0.353 (7.90)	
Log Likelihood	-74,560		-77,290		-87,028	

Note: T-ratios are in parentheses. All models are estimated by ML approach with flexible baseline hazard function. Prepayment and default functions are considered as correlated competing risks and they are estimated jointly. A bivariate distribution of unobserved heterogeneous error terms is also estimated simultaneously with the competing risks hazard functions. LOC1 and LOC2 are the location parameters of the error distribution. MASS1 and MASS2 are the mass points associated with LOC1 and LOC2, respectively. MASS1 is normalized to 1.0 during the estimation.

* The US sample is based on a five percent random sample of 22,294 loans. The California sample is based on a ten percent random sample of 22,374 loans. The Texas sample is based on a hundred percent sample of 29,310 loans.

Figure 1

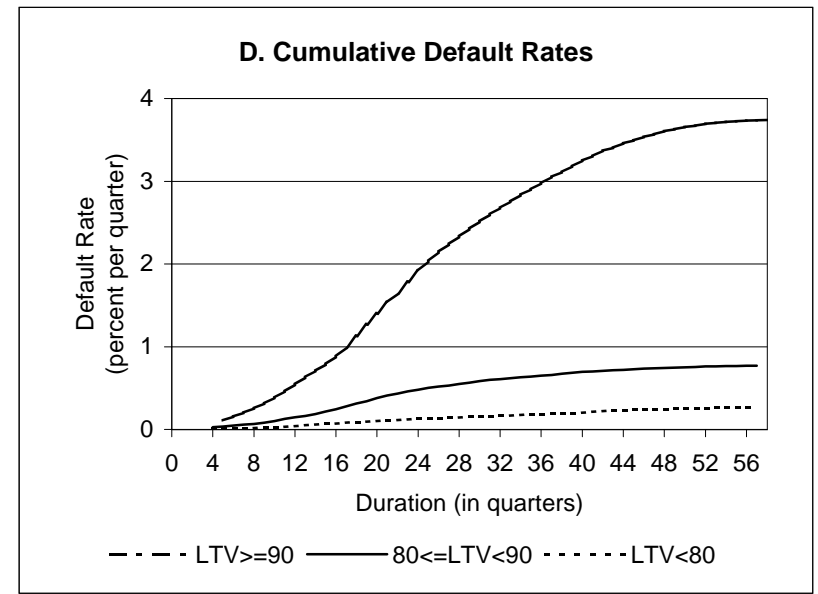
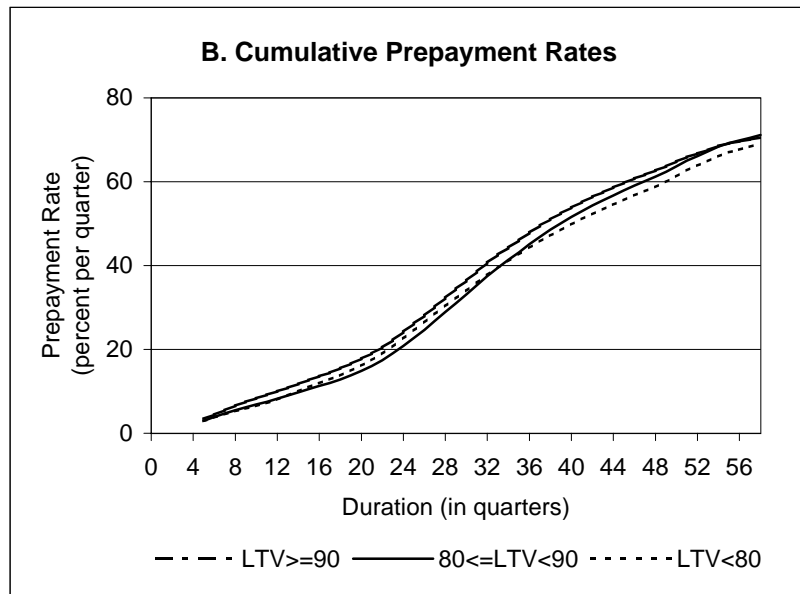
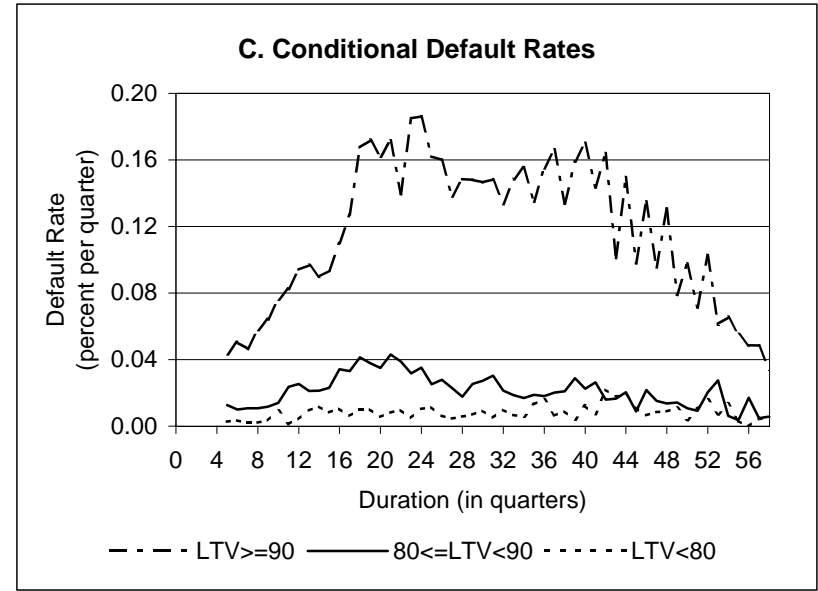
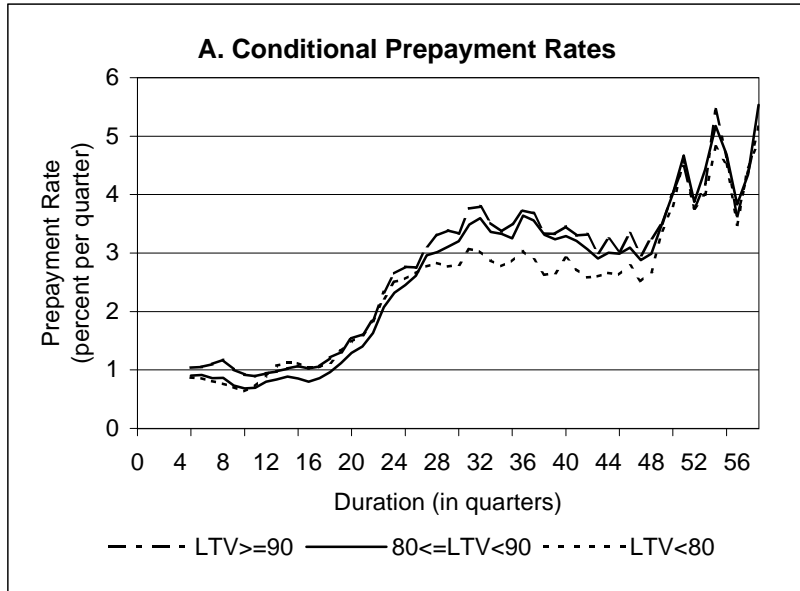


Figure 2

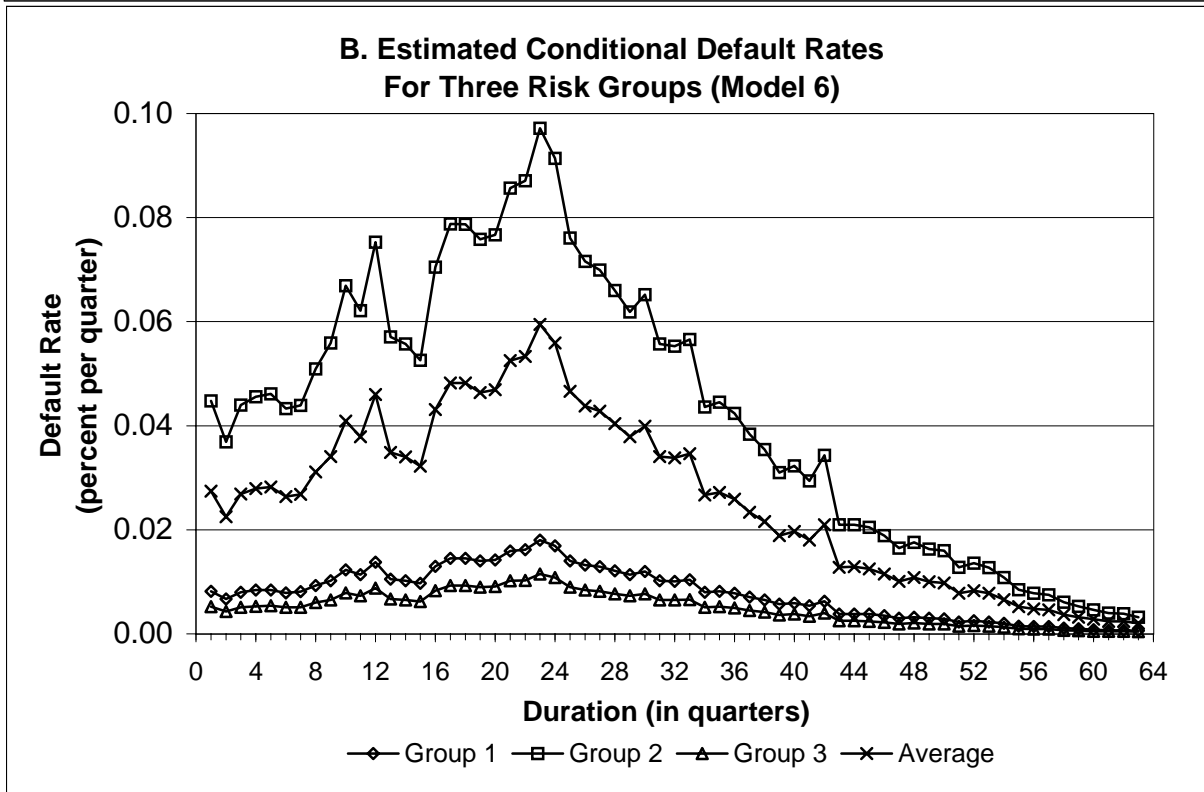
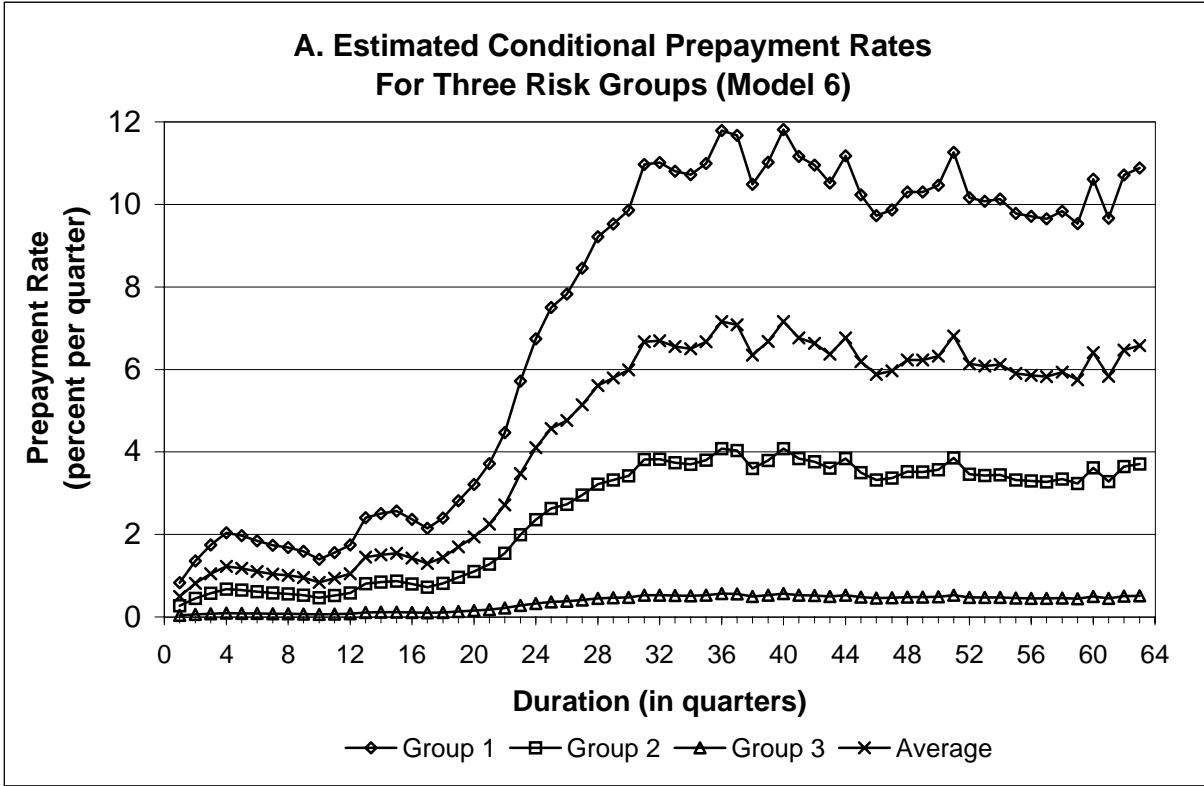


Figure 3

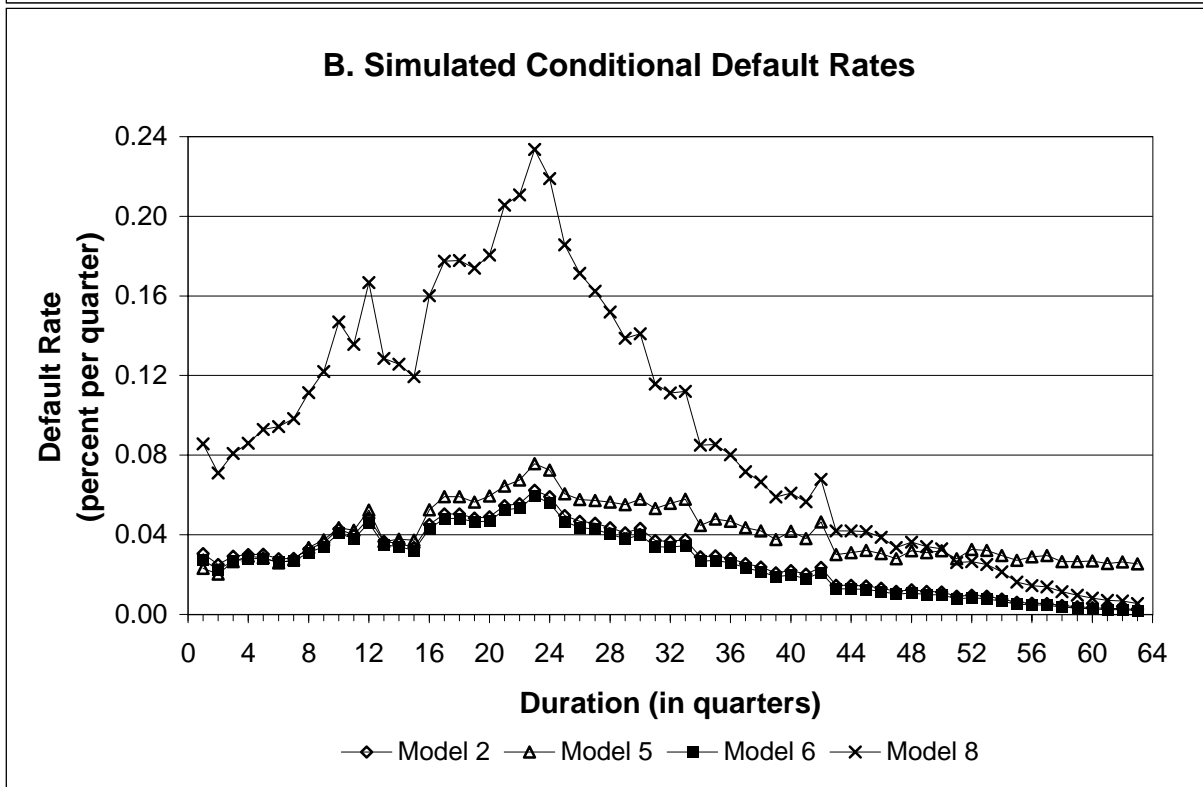
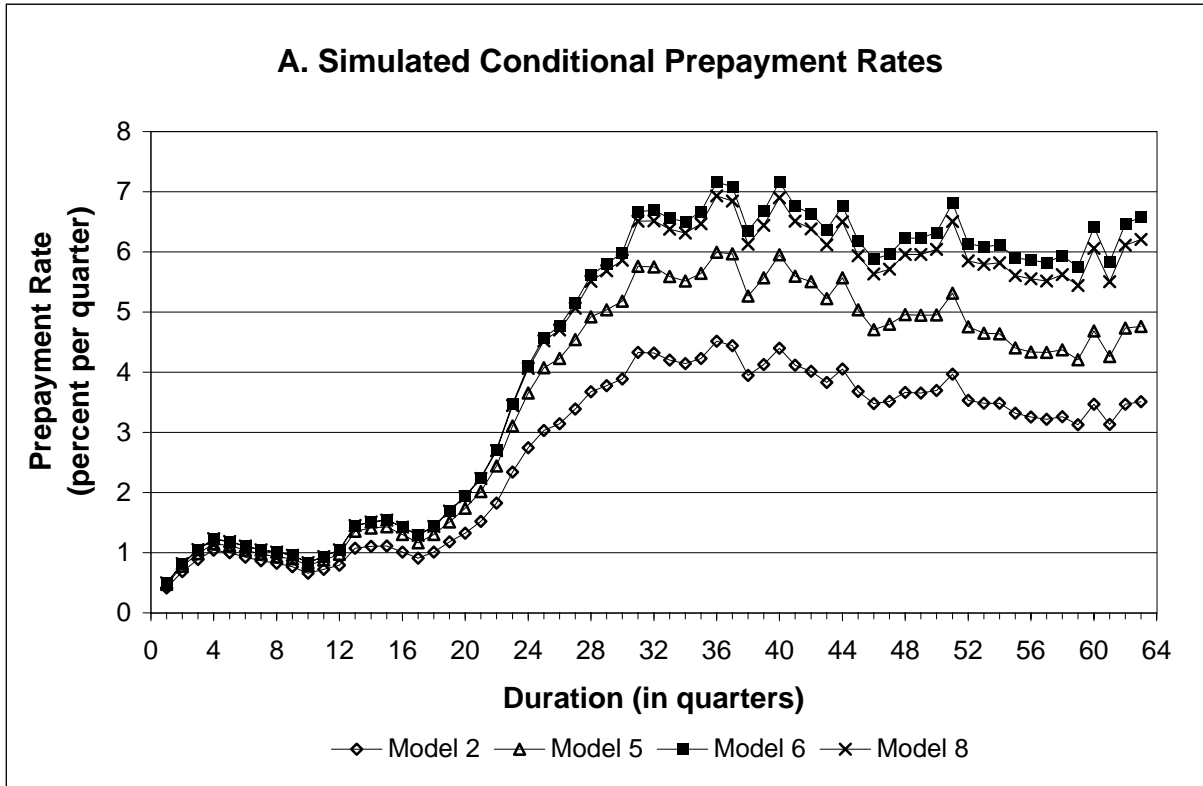


Figure 4

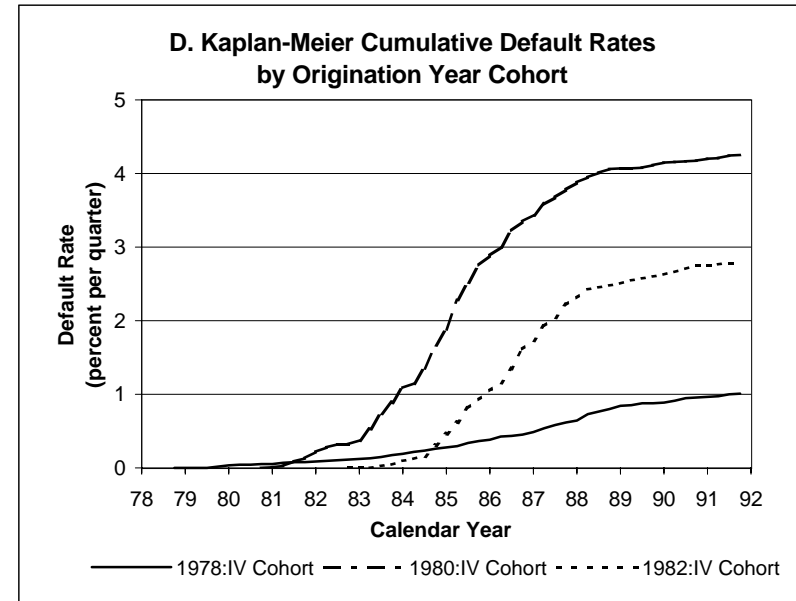
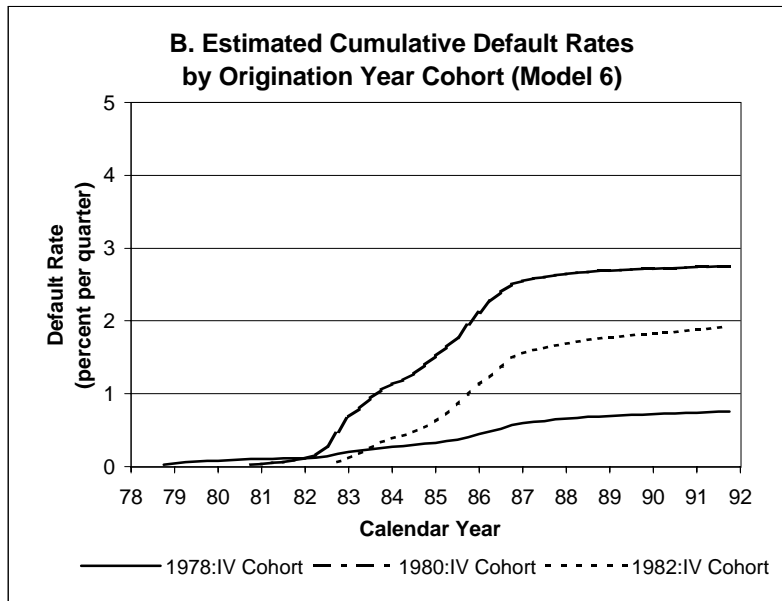
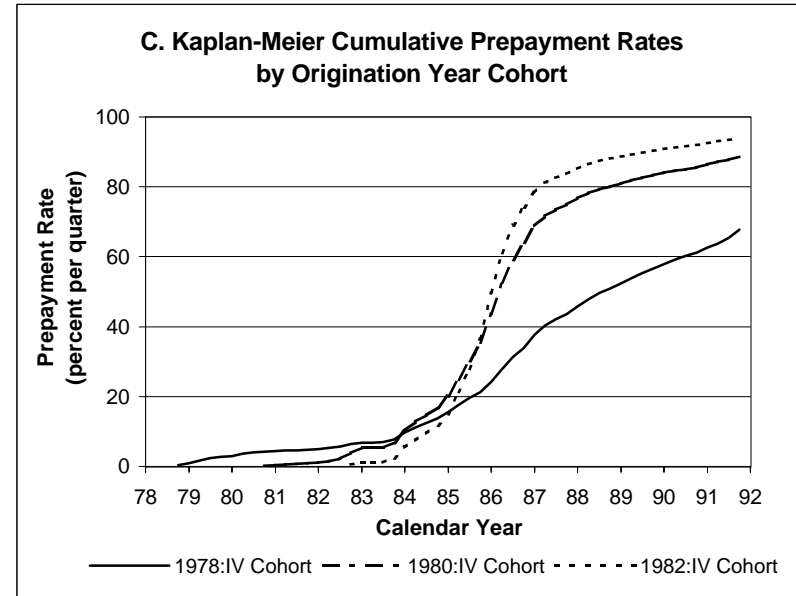
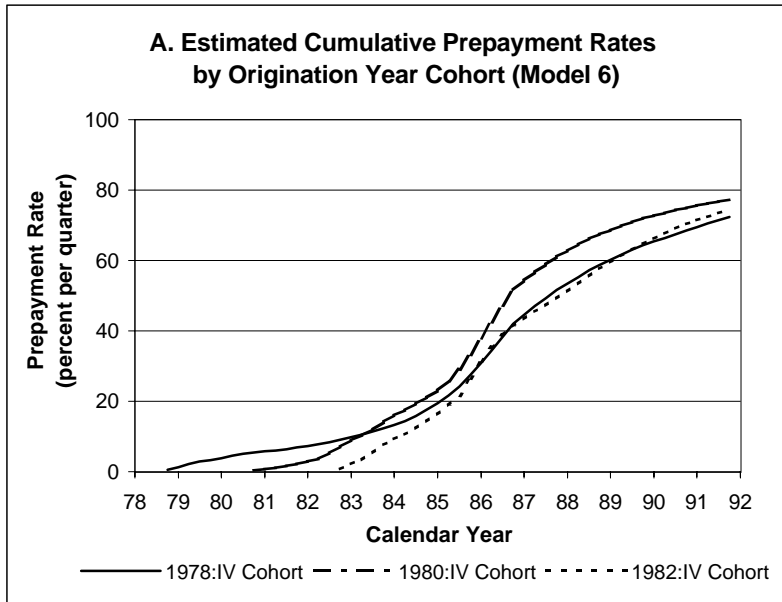


Figure 5

