

Lawrence Berkeley National Laboratory

Lawrence Berkeley National Laboratory

Title

Case Study of the California Cement Industry

Permalink

<https://escholarship.org/uc/item/96f9m6qf>

Authors

Coito, Fred
Powell, Frank
Worrell, Ernst
et al.

Publication Date

2005-05-01

Case Study of the California Cement Industry

*Fred Coito and Frank Powell, KEMA
Ernst Worrell and Lynn Price, Lawrence Berkeley National Laboratory
Rafael Friedmann, Pacific Gas and Electric Company*

ABSTRACT

California is the largest cement producing state in the U.S., accounting for between 10% and 15% of U.S. cement production and cement industry employment. The cement industry in California consists of 31 sites that consume large amounts of energy, annually: 1,600 GWh of electricity, 22 million therms of natural gas, 2.3 million tons of coal, 0.25 tons of coke, and smaller amounts of waste materials, including tires.

The case study summarized in this paper focused on providing background information, an assessment of energy-efficiency opportunities and barriers, and program recommendations that can be used by program planners to better target products to the cement industry.

The primary approach to this case study involved walk-through surveys of customer facilities and in depth interviews with customer decision makers and subsequent analysis of collected data. In addition, a basic review of the cement production process was developed, and summary cement industry energy and economic data were collected, and analyzed. The analysis of secondary data provides background information on the cement industry and identification of potential energy-efficiency opportunities. The interviews provide some understanding of the customer perspective about implementation of energy-efficiency projects.

Introduction

As California strives to increase the adoption of electricity and natural gas efficiency measures and practices, it is clear utility programs that have traditionally targeted residential and commercial market segments will need to be expanded to better encompass the industrial sector. A case study of the cement industry, one on the larger industrial segments in California, was developed to help program planners improve their understanding of industrial customers' opportunities to save energy and associated costs. This paper summarizes this study.

The goals of this case study included: identifying key energy-efficiency opportunities and associated technical potential; identifying key barriers that preclude cement customers for adopting energy efficient practices and equipment; and examining how current utility- and Public Goods Charge (PGC)- funded programs can better address these customers' barriers to implementation of more energy-efficiency measures

The primary approach to this case study involved analysis of secondary source data, walk-through surveys of customer facilities, in depth interviews with customer decision makers, and subsequent analysis of collected data.

Background

The cement manufacturing industry is identified by North American Industry Classification System (NAICS) code 32731 (formerly identified as SIC code 3241). The cement industry “comprises establishments primarily engaged in manufacturing portland, natural, masonry, pozzalanic, and other hydraulic cements. Cement manufacturing establishments may calcine earths or mine, quarry, manufacture, or purchase lime” (U.S. Census Bureau 2002).

California is the largest cement producing state in the U.S., accounting for between 10% and 15% of U.S. cement production and cement industry employment. The cement industry in California consists of 31 sites (U.S. Census Bureau 2000) that consume large amounts of energy, annually: 1,600 GWh of electricity, 22 million therms of natural gas, 2.3 million tons of coal, 0.25 tons of coke, and smaller amounts of waste materials, including tires (USGS various years). Eleven of these sites are involved in full-scale cement production, while the remainder of the facilities provides grinding and mixing operations only. The eleven full-operation sites account for over 90% of the California cement industry’s electric use and 80% of the natural gas use.

Study Approach

This case study utilized secondary source data, combined with interviews of cement customers, to provide insight into the size and workings of the cement industry as well as identification of opportunities and barriers to increased energy efficiency.

Key cement industry statistics were obtained from the 1997 Economic Census, the 1998 Manufacturing Energy Consumption Survey (MECS), utility billing data, and data from the California Energy Commission (CEC). In addition, a variety of secondary sources were utilized by Lawrence Berkeley National Laboratory (for this and other studies) to develop an understanding of the cement production process and associated energy-efficiency opportunities.

In depth interviews were conducted with senior representatives from four cement companies representing operations at five California cement plants. The interviews were conducted by a senior KEMA engineer, who was knowledgeable about cement plant operations. The interview process included a technical discussion of each facility’s operations, but mainly focused on various aspects of the customers’ decision-making process, especially as it applies to purchases of energy-efficiency products and services.

The secondary data and related analyses provide background information on the cement industry, along with potential energy-efficiency opportunities. The interviews provide some understanding of the customer perspective about implementation of energy-efficiency projects, including major barriers to increased energy efficiency.

Cement Industry Statistics

In California, the cement industry employs about 2,000 workers and has an annual value of shipments of about \$850 million. Table 1 presents economic statistics for the California cement industry, as compared to U.S. cement industry totals.

Fuel costs are the single largest variable production cost at cement plants. Variable costs are typically about 50% of overall operating costs, so energy is frequently the single largest production cost, besides raw materials. Labor is relatively small at a cement plant. Figure 1

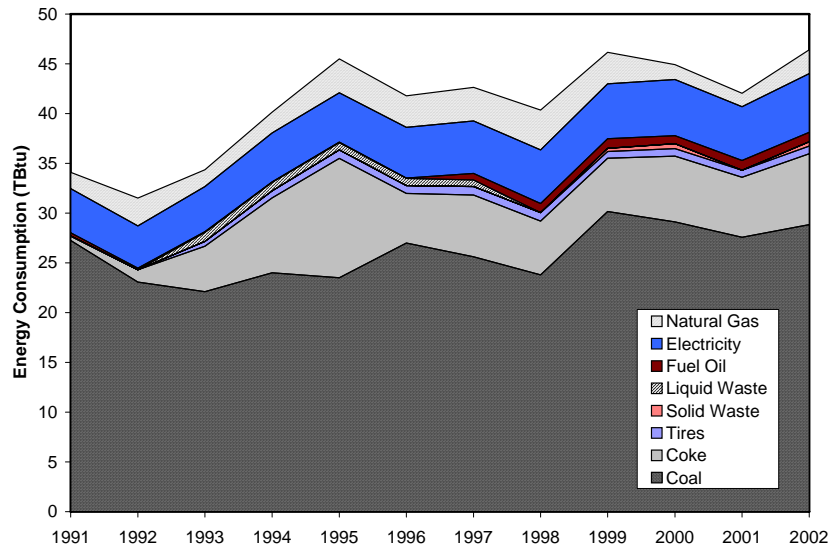
Proceedings of the 2000 ACEEE Summer Study on Energy Efficiency in Industry shows historical consumption of energy by California cement plants. While coal is the primary fuel used, significant amounts of electricity and natural gas are also consumed. These latter two fuels are of most interest to the California utilities.

Table 1. Cement Industry Economic Statistics

	California	U.S.	CA share of U.S.
Total establishments	31	279	11%
Establishments with 20 employees or more	15	136	11%
Number of employees	1,927	16,973	11%
Payroll (\$1,000's)	93,795	735,506	13%
Number of production workers	1,461	12,524	12%
Total hours worked (1,000's)	3,118	27,294	11%
Total wages (\$1,000's)	66,434	498,875	13%
Value added (\$1,000's)	486,760	4,027,714	12%
Cost of materials (\$1,000's)	354,774	2,479,050	14%
Value of shipments (\$1,000's)	846,898	6,540,243	13%
Total capital expenditures (\$1,000's)	66,207	506,015	13%

Source: 1997 Economic Census, <http://www.census.gov/epcd/www/econ97.html>

Figure 1. California Cement Industry Energy Consumption



Source: Hendrick van Oss, U.S.G.S.

In California, the cement industry consumes approximately 220 MW and 1,600 GWh per year of electricity, and 22 million therms per year of natural gas. This represents about 5% of California manufacturing electricity consumption and 1% of California manufacturing natural gas consumption. Table 2 compares cement industry electricity and natural gas use for California and the U.S.

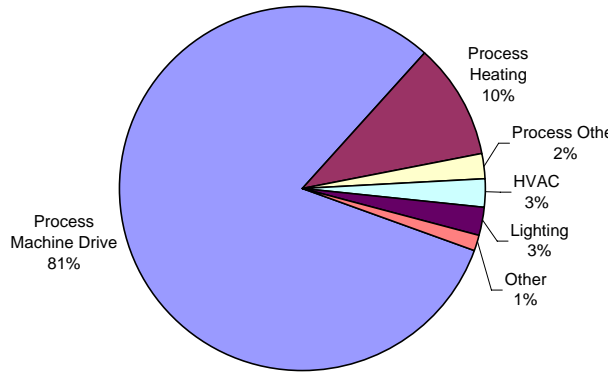
Table 2. Cement Industry Electricity and Natural Gas Consumption

Energy Use Type	California	U.S.	CA share of U.S
GWh per year, electricity	1,620	11,900	14%
MW, electricity	224	na	na
Million therms per year, natural gas	22	260	8%

Source: Utility billing data, CEC forecast database, and 1998 MECS data

Figure 2 shows typical end use electricity consumption shares, based on 1998 Manufacturing Energy Consumption Survey (MECS) data. Most of the usage is in the machine drive end use, associated with grinding, crushing, and materials transport. Cement industry natural gas consumption is concentrated in the process heating end use (about 90% of total gas consumption), which involves clinker production in large kilns. In most cases natural gas is used as a supplemental fuel to coal. Only one California plant utilizes gas as a primary kiln fuel. This is a relatively small plant that produces white cement. The remainder of the natural gas usage is associated with boiler and machine drive end uses.

Figure 2. Cement Industry End Use Electricity Consumption

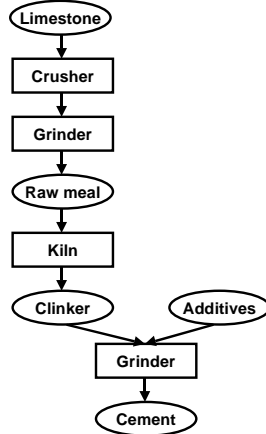


Source: 1998 MECS

Cement Production Process

A schematic of the cement production process is shown in Figure 3. The most common raw materials used for cement production are limestone, chalk and clay. The major component of the raw materials, the limestone or chalk, is usually extracted from a quarry very close to the plant. In California, the limestone is extracted from open-face quarries. The raw materials are crushed, ground, and proportioned so that the resulting mixture has the desired fineness and chemical composition for delivery to the pyroprocessing systems. More than 1.5 tons of raw materials are required to produce one ton of portland cement (Greer *et al.* 1992; Alsop and Post 1995). In dry processing the materials are ground into a flowable powder in horizontal ball mills or in vertical roller mills. Drying of raw materials before pyroprocessing is done utilizing waste heat from the kiln exhaust, clinker cooler hood, or auxiliary heat from a stand-alone air heater.

Figure 3. Simplified Process Schematic for Cement Making



Clinker is produced by pyroprocessing in large kilns. These kiln systems evaporate the inherent water in the raw meal, calcine the carbonate constituents (calcination), and form cement minerals (clinkerization). The main pyroprocessing kiln type used in the U.S. is the rotary kiln. In these rotary kilns a tube with a diameter up to 25 feet is installed at a 3-4 degree angle that rotates 1-3 times per minute. The ground raw material, fed into the top of the kiln, moves down the tube countercurrent to the flow of gases and toward the flame-end of the rotary kiln, where the raw meal is dried, calcined, and enters into the sintering zone. In the sintering (or clinkering) zone, the combustion gas reaches a temperature of 3300–3600 °F. While many different fuels can be used in the kiln, coal has been the primary fuel in the U.S. since the 1970s.

Once the clinker is formed in the rotary kiln, it is cooled rapidly to minimize the formation of a glass phase and ensure the maximum yield of alite (tricalcium silicate) formation, an important component for the hardening properties of cement. The main cooling technologies are either the grate cooler or the tube or planetary cooler. In the grate cooler, the clinker is transported over a reciprocating grate through which air flows perpendicular to the flow of clinker. In the planetary cooler (a series of tubes surrounding the discharge end of the rotary kiln), the clinker is cooled in a counter-current air stream. The cooling air is used as secondary combustion air for the kiln.

After cooling, the clinker can be stored in the clinker dome, silos, bins, or outside. The material handling equipment used to transport clinker from the clinker coolers to storage and then to the finish mill is similar to that used to transport raw materials (e.g. belt conveyors, deep bucket conveyors, and bucket elevators). To produce powdered cement, the nodules of cement clinker are ground to the consistency of face powder. Grinding of cement clinker, together with additions (3-5% gypsum to control the setting properties of the cement) can be done in ball mills, ball mills in combination with roller presses, roller mills, or roller presses. While vertical roller mills are feasible, they have not found wide acceptance in the U.S. Coarse material is separated in a classifier that is re-circulated and returned to the mill for additional grinding to ensure a uniform surface area of the final product.

Energy Use in Cement Production

The cement sector energy consumption is comprised of energy used for raw material preparation, clinker production, and finish grinding. Raw material preparation is an electricity-

intensive production step requiring generally about 23-32 kWh/short ton (COWIconsult *et al.* 1993; Jaccard and Willis 1996), although it could require as little as 10 kWh/short ton.

Clinker production is the most energy-intensive stage in cement production, accounting for over 90% of total industry energy use, and virtually all of the fuel use. Typical fuel consumption of a dry kiln with 4 or 5-stage preheating can vary between 2.7 and 3.0 MBtu/short ton clinker. A six stage preheater kiln can theoretically use as low as 2.5-2.6 MBtu/short ton clinker. The most efficient pre-heater, pre-calciner kilns use approximately 2.5 MBtu/short ton clinker. Alkali or kiln dust (KD) bypass systems may be required in kilns to remove alkalis, sulfates, and/or chlorides. Such systems lead to additional energy losses since sensible heat is removed with the bypass gas and dust.

Power consumption for grinding depends on the surface area required for the final product and the additives used. Electricity use for raw meal and finish grinding depends strongly on the hardness of the material (limestone, clinker, pozzolana extenders) and the desired fineness of the cement as well as the amount of additives. Blast furnace slags are harder to grind and hence use more grinding power, between 45 and 64 kWh/short ton for a 3,500 Blaine¹ (expressed in cm²/g). Modern ball mills may use between 29 and 34 kWh/short ton (Worrell and Galitsky 2004) for cements with a Blaine of 3,500.

Technical Potential for Energy Efficiency

For this analysis, we compared current energy use (both for electricity and for fuels) for cement production in California (van Oss, 2003) to best practice values for these two types of fuels. The best practice value of 109 kWh/short ton of cement for electricity production is based on expert judgment, taking into account the hard limestone found in California, as reported by representatives at Hansen Permanente Cement Company. The best practice value of 2.62 MBtu/short ton of clinker is based on a plant built in Taiwan in the mid-1990s that has an intensity of 2.64 MBtu/short ton (Die Zementindustrie Taiwans 1994) and a plant built in India that has an intensity of 2.58 MBtu short ton (Somani and Kothari 1997).

Given these best practice values, we estimate potential electricity savings of about 32 kWh/short ton of cement and potential fuel savings of about 0.7 MBtu/short ton of clinker. Given 2002 production of 11,166,000 short tons of cement and 11,187,000 short tons of clinker in California, the technical potential electricity savings are about 360 GWh and fuel savings are about 7.8 TBtu, with a technical potential savings for both fuels of about 20% over 2002 levels.

Energy-Efficiency Opportunities

Energy efficiency opportunities can be categorized into three general categories which are discussed briefly below²:

- **Operations and maintenance (O&M):** O&M practices include elements such as motor and bearing lubrication, motor belt replacement, fan blade cleaning, fan wheel balancing,

¹ Blaine is a measure of the total surface of the particles in a given quantity of cement, or an indicator of the fineness of cement. It is defined in terms of square centimetres per gram. The higher the Blaine, the more energy required to grind the clinker and additives (Holderbank 1993).

² For a more complete discussion of these opportunities, see Worrell and Galitsky 2004.

Proceedings of the 2000 ACEEE Summer Study on Energy Efficiency in Industry and compressed air system maintenance. While most customers indicated that they tried to keep equipment in good working order, the primary focus is on keeping equipment operating to maximize production. Energy-efficiency considerations are not the primary concern.

- ***High efficiency equipment/processes:*** Significant energy savings projects typically involve major process and/or equipment modifications that are industry-specific and highly specialized. Cement industry customers see their equipment vendors as “business partners” because the vendors tend to have the specialized expertise in their particular area (e.g. crushers/classifiers, kilns, conveyors). Some measures include: efficient materials transport systems; conversion of ball mills to roller mills for grinding; high efficiency classifiers; conversion to more efficient kilns such as vertical precalciner kilns; variable speed drives (VSDs) for fans and other variable load drives; and compressed air system improvements
- ***Controls:*** Key opportunities for improved process controls involve clinker production and finish grinding, as well as operation of compressed air systems.

Customer Interviews

Customer interviews with key plant managers focused on various factors that affect their decision to undertake energy-efficiency investments. Results of the interviews are summarized, by topic.

Importance of Energy Costs

Energy costs are the single largest variable production cost at cement plants, as indicated by all interviewees. Variable costs are typically around 50% of overall operating costs in the cement industry, so energy is often the single largest production cost. Electricity accounts for over 10% of overall production costs and natural gas accounts for 1 to 5% of production costs, as facilities utilize other fuels (coal, tires, etc.) in their kilns.

Energy in Relation to Other Business Factors

When asked about the factors considered key to their business, customers all agreed that these factors were: environmental regulations, market conditions, and energy costs. However, when rating key factors to their company’s success, identifying and implementing cost saving measures was low on the list, see Table 3.

Table 3. Rating of Key Business Factors (0 = Unimportant, 5 = Extremely Important)

Business Factors	Average Ranking
Meeting regulatory requirements (such as environmental requirements)	5.0
Meeting your production schedule	4.5
Maintaining product quality and consistency	4.3
Keeping up with new or shifting market demands	3.3
Having a reliable, high quality supply of electricity	3.3
Maintaining your market niche	2.5
Keeping up technologically with competitors	2.3
Maintaining a happy and productive staff	2.3
Identifying and implementing cost saving measures	1.3

Energy Management Policy

Interviewed customers had a varying emphasis on energy management at their facilities: ranging from moderate for the less efficient plants to extensive for the most efficient facility. One interviewee provided a pretty good summary of the basic approach towards energy management as practiced by all surveyed firms and the competing objectives they must deal with:

“We have a strong emphasis on energy management. However, maintaining consistent production and product quality is the overriding concern. Although everyone at the plant is aware of energy and it is a key factor on which some operations are based, we have limited operating staff. Fine-tuning for optimizing efficiency, and developing, championing, and managing energy improvements takes staff time that is just not available given each person’s day to day responsibility. We do have “special projects “ engineering staff, but even they are too busy to take on energy projects that aren’t related to maintaining production. Also, the plant must remain in production as much as possible. The interruptions and coordination required for retrofits can also restrict consideration of energy retrofits.”

General Investment Decision-Making Practices

For the most part, each company’s operations personnel are charged with identifying opportunities and specifying equipment to invest in. Senior management is responsible for approving all investments outside of normal O&M expenditures. Also, vendors were sometimes included in the equipment specification process. A detailed technical and financial review is required before investing in all projects.

Returns on capital investments need to be pretty high to justify expenditures. The interviewees from the less efficient facilities indicated that their typical targeted payback for investments was 1.0-1.5 years. The more efficient plants indicated somewhat higher payback thresholds: two to three years. Other critical drivers for investment in new equipment included: capital availability, production effects, market conditions, and innovation. Additional considerations included: lost production time, reliability, and environmental issues.

Energy-Efficiency Decision-Making

All interviewees indicated that, energy-efficiency investments were treated similarly to other investment opportunities. One customer noted that specific-energy is considered in all investment decisions – consistent with energy being such a large part of operating costs.

Another customer noted that the availability of incentives might cause them to look more favorably at energy-efficiency investments

Two of the four companies have policies in place to specify higher efficiency equipment when making investments. A third company had no formal procedures in place, but expected new equipment to lower or at least be neutral with respect to specific energy. The fourth customer, owner of a less efficient plant, had no energy-efficiency purchase policy.

Only one of the four companies (at one of the more efficient facilities) indicated they had an employee dedicated to maintaining/improving energy efficiency at the plant. An additional two companies indicated that there were informal energy-efficiency “champions” at their plants.

O&M Practices

All customers indicated that the primary maintenance approach at their facilities was to do whatever was necessary to keep equipment running in order to maximize production. They all indicated that they tried to maintain equipment so as to minimize energy use, since energy was such a large part of their operations.

Attitudes Towards Energy Efficiency

Three of the four customers indicated that energy-efficiency equipment and practices were very important to their operations. One of the three acknowledged that they don’t have enough staff and time to pursue most of their opportunities. The fourth customer indicated that they could do much better with regard to energy efficiency, but felt they were severely limited by capital and other resource constraints.

Key limitations to increased energy efficiency for these customers are time and money. They have limited staff and limited capital, and most believe they are doing the best job they can with resources at hand. They all seem willing to do more to improve their plant’s energy efficiency if they had more resources. The smaller energy-efficiency items at these facilities can amount to fairly large savings but don’t get addressed because they are considered a hassle.

Energy Efficiency and Program Awareness/Participation

All customers claimed they utilized various sources to maintain awareness of energy-efficiency measures, including: trade journals, vendors, utility staff, business associates, trade associations, and trade shows. Trusted sources of energy-efficiency information cited by all respondents included the IEEE Tech Committee and the Portland Cement Association (PCA). In addition, one customer cited his corporate staff and one customer cited his local utility. All respondents were aware of the Standard Performance Contract (SPC) and Express Efficiency Rebate Programs provided in California, and one respondent indicated he was aware of the availability of energy audits.

Barriers to Energy Efficiency

Barriers to increased energy efficiency were identified in discussions with cement customers and utility representatives who are in close contact with their cement customers:

- **Limited capital:** many of the energy-efficiency improvements in the cement industry involve large capital investments, and most customers cited limited capital availability as a key factor limiting increases in energy efficiency.
- **Production concerns:** keeping equipment operating and avoiding production disruptions was of the highest priority. Additionally, cement plants do not like to shut down except for once a year, largely because shut down stresses the ceramic insulation in the kiln.
- **Limited staff time:** while all customers want to stay as efficient as possible, staff's number one priority is "keeping things running."
- **Information:** while all customers feel they have access to the information they need to make energy-efficiency improvements, several customers indicated that they did not have time to focus on this information.
- **Reliability concerns:** since maintaining production is such a high priority, cement customers are very concerned about the reliability of all new equipment.
- **Hassle:** since staff time is limited, smaller energy-efficiency projects are not pursued because they "are not worth the trouble."
- **Facility uncertainty:** one customer indicated that they were currently investigating the feasibility of a complete plant overhaul. Uncertainty over the overhaul project has halted any possible efficiency projects.

Barriers to Program Participation

While all interviewed customers were aware of the basic California energy-efficiency programs, and two of the customers had participated in the SPC program, there were barriers to increased program participation cited:

- **Short program period:** it often takes three to five years for these customers to develop and implement a project, from the planning through construction stages. Programs that have a one or two year time period don't fit well with their operations.
- **Limited incentives:** many of the cement plant projects cost tens of millions of dollars. Incentives of a few hundred thousand dollars don't provide much incentive here.
- **M&V (measurement and verification) requirements:** past program M&V requirements have generally favored one-for-one equipment changeouts where pre and post equipment efficiencies are more measurable. Measures that are more "holistic" and affect energy use of a system are harder to justify savings for and thus have had limited acceptance in the Program.
- **Program paperwork:** SPC Program participation was initially limited because the application process was time consuming and a burden on customer staff. Utility assistance to some customers with the applications, when necessary, has helped mitigate this barrier.

Energy-Efficiency Organizations/Initiatives

Various organizations and initiative are available to assist companies to improve their efficiency and reduce energy costs. Key initiatives currently affecting the cement industry include:

- **Portland Cement Association (PCA):** The organization has a double function, as it serves as the representation in Washington, DC, and as a research organization and clearinghouse focused on cement and concrete applications. Over 80% of the cement plants in the United States and all California cement companies are associated with the PCA. The PCA has no special programs related to energy-efficiency improvement in the cement industry but serves as the conduit for national programs like ENERGY STAR® and ClimateVISION.
- **Cement Kiln Recycling Coalition:** The Cement Kiln Recycling Coalition (CKRC) is a trade association with member companies located throughout the United States (CKRC 2004). CKRC and its member companies support regulations related to the use of waste-derived fuels including scrap tires. It disseminates information on the use of wastes as fuel in clinker kilns.
- **Climate VISION:** The federal government and industry organizations in 12 energy-intensive economic sectors joined in a voluntary partnership called Climate VISION that works with industry to identify and pursue cost-effective solutions to reduce emissions using existing technologies; develop tools to calculate and report emission intensity reductions; speed the commercial adoption of advanced technologies; and develop strategies to reduce emissions intensity in other economic sectors (ClimateVISION, 2004).
- **ENERGY STAR:** ENERGY STAR for industry (U.S. EPA, 2004a) aims at the development and institutionalization of strategic corporate energy management in participating companies. Within the “Focus” effort, the ENERGY STAR program collaborates with specific industries, such as cement³. The Focus efforts include three elements: (1) support for a corporate energy management program; (2) a tool to analyze the performance of a plant compared to the peers in the U.S.; and (3) an Energy Guide (prepared by LBNL), providing descriptions of energy-efficiency measures in the Focus industry. The Guide for the cement industry was published in January 2004 (Worrell and Galitsky 2004).
- **Climate Leaders:** Climate Leaders is a voluntary industry-government partnership of the U.S. EPA that encourages companies to develop long-term comprehensive climate change strategies and set greenhouse gas (GHG) emissions reduction goals (U.S. EPA 2004b). Members of Climate Leaders set a long-term target for GHG emission reduction for the company.

³ Other Focus industries (early 2004) are: breweries, wet corn milling, vehicle assembly, petroleum refining and pharmaceuticals. Every year new Focus industries are added.

Program Recommendations

Program recommendations, developed from analysis of secondary data and customer interviews that identified opportunities and barriers to energy efficiency, are discussed below.

- ***Increase program time limits for project implementation:*** if program limits were increased to three years or more, the program participation process would fit better into customers planning, budgeting, and operations schedules.
- ***Integrate industrial program activities with DOE and other initiatives:*** as presented above, there are a number of organizations and initiatives that cement industry customers are involved in or have access to. Program funding could be utilized to support energy-efficiency aspects of these initiatives directed towards California cement producers.
- ***Provide energy manager funding:*** while most customers indicate that they manage their energy use, and that staff are committed to improving energy efficiency, only one interviewed customer has employed a full time energy management position. It may be possible to use PGC funding to hire industry experts to serve as energy managers at interested facilities. These experts could take the lead on identification, planning, and implementation of energy-efficiency projects. This would help alleviate a key barrier to energy-efficiency improvements – limited staff time.
- ***Increase rebate limits:*** for cement customers, where energy-efficiency projects can cost many millions of dollars, caps on rebate levels limit their effectiveness in influencing customer decisions. The limited incentives primarily influence the smaller projects a customer will undertake, such as the installation of VSDs (variable speed drives). While larger projects may also qualify for incentives, it is likely that a small incentive will not influence a large project.
- ***Make incentives conditional on customer installation of very cost-effective measures:*** customers indicate that the hassle factor may cause them not to pursue some of the smaller energy-efficiency projects. If incentives for larger projects were conditional on customers implementing many of the smaller cost-effective projects, like those with paybacks of six months or less, it may be possible to get these smaller projects on the radar screen.
- ***Provide audits for cross-cutting technologies:*** while a high level of expertise is required for understanding and recommending energy-efficiency projects particular to the cement industry, audits may be useful in identifying good opportunities for some of the more standard end uses such as lighting, HVAC, compressed air, and pumping. Combined with an energy manager program, these audits could help customers more easily implement some of these smaller projects. (Note, a small project at an energy intensive cement plant may equate to a fairly large project at other businesses.)
- ***Provide funding for industry-specific education and training:*** ongoing training of cement plant staff, with a special focus on energy efficiency, may be useful to maintain customer interest in improving plant efficiency. Such training could focus on the investments and practices that generally provide the best returns for an customer's efforts, as identified in reports and software tools developed for the cement industry.

Such training could be coordinated with activities provided in other cement industry initiatives.

Conclusions

This case study provides a focused presentation of opportunities and barriers to increased energy efficiency in the cement industry, and suggests possible ways for PGC-funded programs to affect these large industrial customers. The target audience for this study is program designers and managers. They are provided with a background summary of cement plant operations and some insight into the customer decision-making process. While the study targeted the cement industry, it is likely that program recommendations that were developed would apply to similar types of large “heavy industry” facilities.

Acknowledgments

This study was funded through the California public goods charge (PGC) for energy efficiency. The study was managed for the California Public Utilities Commission (CPUC) by PG&E, with review and input from the California investor-owned utilities, San Diego Gas and Electric Company (SDG&E), Southern California Edison Company (SCE), and Southern California Gas Company (SCG).

References

- Alsop, P.A. and J.W. Post, 1995. *The Cement Plant Operations Handbook*, (First edition), Tradeship Publications Ltd., Dorking, UK.
- Cement Kiln Recycling Coalition, 2004. Available online: www.ckrc.org
- ClimateVISION, 2004. Available online: www.climatevision.gov
- COWIconsult, March Consulting Group and MAIN, 1993. “Energy Technology in the Cement Industrial Sector”, Report prepared for CEC - DG-XVII, Brussels, April 1992.
- Die Zementindustrie Taiwans - Rueckblick und Gegenwaertiger Stand, 1994. (The Cement Industry in Taiwan - Historic and Current Situation, 1994) *Zement-Kalk-Gips* 147 pp.47-50.
- Greer, W. L., Johnson, M. D., Morton, E.L., Raught, E.C., Steuch, H.E. and Trusty Jr., C.B., 1992. “Portland Cement,” in *Air Pollution Engineering Manual*, Anthony J. Buonicore and Wayne T. Davis (eds.). New York: Van Nostrand Reinhold.
- Holderbank Consulting, 1993. “Present and Future Energy Use of Energy in the Cement and Concrete Industries in Canada,” CANMET, Ottawa, Ontario, Canada.

Proceedings of the 2000 ACEEE Summer Study on Energy Efficiency in Industry
Jaccard, M.K. & Associates and Willis Energy Services Ltd., 1996. *Industrial Energy End-Use Analysis and Conservation Potential in Six Major Industries in Canada*. Report prepared for Natural Resources Canada, Ottawa, Canada.

Portland Cement Association, 2004. Available online: www.cement.org

Somani, R.A., S.S. Kothari, 1997. "Die Neue Zementlinie bei Rajashree Cement in Malkhed/Indien" *ZKG International* 8 50 pp.430-436 (1997).

U.S. Census Bureau. 2000. Economic Census. Available online:
<http://www.census.gov/epcd/www/econ97.html>

U.S. Census Bureau. 2002. NAICS Definitions. Available online:
<http://www.census.gov/epcd/naics02/def/NDEF327.HTM#N32731>

U.S. Energy Information Administration. 2004. 1998 Manufacturing Consumption Survey. Available online: <http://www.eia.doe.gov/emeu/mecs/contents.html>

U.S. Environmental Protection Agency, 2004a. Available online:
http://www.energystar.gov/index.cfm?c=industry.bus_industry

U.S. Environmental Protection Agency, 2004b. Available online: www.epa.gov/climateleaders

United States Geological Survey, various years. *Minerals Yearbook*, Washington, D.C., USGS,
<http://minerals.er.usgs.gov/minerals/>.

van Oss, H., 2003. Personal Communication. U.S. Geological Survey.

Worrell, E. and Galitsky, C., 2004. *Energy Efficiency Improvement Opportunities for Cement Making: An ENERGY STAR Guide for Energy and Plant Managers*. Berkeley, CA: Lawrence Berkeley National Laboratory (LBNL-54036).