

UCLA

UCLA Previously Published Works

Title

Be STARS IN THE OPEN CLUSTER NGC 6830

Permalink

<https://escholarship.org/uc/item/94z8k71m>

Journal

The Astronomical Journal, 151(5)

ISSN

0004-6256

Authors

Yu, Po-Chieh
Lin, Chien-Cheng
Lin, Hsing-Wen
et al.

Publication Date

2016-05-01

DOI

10.3847/0004-6256/151/5/121

Peer reviewed

BE STARS IN THE OPEN CLUSTER NGC 6830

PO-CHIEH YU (俞伯傑)^{1,2}, CHIEN-CHENG LIN (林建爭)^{1,3}, HSING-WEN LIN (林省文)¹, CHIEN-DE LEE (李建德)¹, NICK KONIDARIS⁴, CHOW-CHOONG NGEOW (饒兆聰)¹, WING-HUEN IP (葉永烜)^{1,5}, WEN-PING CHEN (陳文屏)^{1,6}, HUI-CHEN CHEN (陳慧真)⁷, MATTHEW A. MALKAN², CHAN-KAO CHANG (章展誥)¹, RUSS LAHER (良主嶺亞)⁸, LI-CHING HUANG (黃立晴)¹, YU-CHI CHENG (鄭宇棋)¹, RICK EDELSON⁹, ANDREAS RITTER^{1,10}, ROBERT QUIMBY¹¹, SAGI BEN-AMI¹², ERAN. O. OFEK¹², JASON SURACE⁸, AND SHRINIVAS R. KULKARNI¹³

Draft version April 11, 2016

ABSTRACT

We report the discovery of 2 new Be stars, and re-identify one known Be star in the open cluster NGC 6830. Eleven H α emitters were discovered using the H α imaging photometry of the Palomar Transient Factory Survey. Stellar membership of the candidates was verified with photometric and kinematic information using 2MASS data and proper motions. The spectroscopic confirmation was carried out by using the Shane 3-m telescope at Lick observatory. Based on their spectral types, three H α emitters were confirmed as Be stars with H α equivalent widths $> -10\text{\AA}$. Two objects were also observed by the new spectrograph SED-Machine on the Palomar 60 inch Telescope. The SED-Machine results show strong H α emission lines, which are consistent with the results of the Lick observations. The high efficiency of the SED-Machine can provide rapid observations for Be stars in a comprehensive survey in the future.

Subject headings: galaxies: star clusters: individual (NGC 6830) – stars: emission-line – stars: Be – instrumentation: spectrographs

1. INTRODUCTION

Be stars are non-supergiant B-type stars with Balmer emission lines, especially the H α lines. Be stars are also characterized by their fast rotation, color excess at infrared wavelength, and continuum/emission-line variability (Townsend, Owocki, & Howarth 2004; Koubský et al. 1997; Hubert & Floquet 1998). Some Be stars show the variability with periods that might be due to pulsation or rotation (Porter & Rivinius 2003; Rivinius, Baade, & Štefl 2003). Previous studies have found the enhancement of Be phe-

nomenon in young clusters (Wisniewski & Bjorkman 2006; Mathew, Subramaniam, & Bhatt 2008), while McSwain & Gies (2005) showed an overall increase in Be frequency with age until 100 Myr. McSwain & Gies (2005) also indicated that Be star formation is not strongly related to the cluster density. Furthermore, the Be star fraction in open clusters seems to be increasing with lower metallicity; between 17.5% and 40% of B stars were found to be Be stars in the Large Magellanic Cloud (LMC) and Small Magellanic Cloud (SMC) (see detailed review in Rivinius, Carciofi, & Martayan 2013).

It is well accepted that the H α emissions of Be stars originate from the circumstellar material, which is suggested to be a flattened disk (Carciofi et al. 2006; Quirrenbach et al. 1994, 1997; Wood, Bjorkman, & Bjorkman 1997). The disks are found to be in Keplerian rotation and stable (Kraus et al. 2012; Meiland et al. 2012). The material might be moved from the stellar surface to form the circumstellar disk (e.g., the decretion disk) through the combination of fast rotation and other mechanisms, such as nonradial pulsations or magnetic fields (Lee, Osaki, & Saio 1991; Porter & Rivinius 2003; Townsend, Owocki, & Howarth 2004; Carciofi et al. 2009). There are several possible origins of the fast rotating star: (1) binary interaction (Pols et al. 1991). During the interaction process, mass and angular momentum can be transferred from the primary star to the mass gainer star, and the latter might be spun-up to a fast rotating star; (2) they might be born as fast rotators; and (3) they have been spun-up during the Main-Sequence (MS) evolution.

To further understand the nature of Be stars, several surveys of Be stars have been carried out in the past (McLaughlin 1932; Jaschek, Jaschek, & Kuczewicz 1964; Drew et al. 2005; Drew Chojnowski et al. 2015;

¹ Graduate Institute of Astronomy, National Central University, 300 Jhongda Road, Jhongli 32001, Taiwan

² Department of Physics and Astronomy, University of California, Los Angeles, CA 90024, USA

³ Key Laboratory for Research in Galaxies and Cosmology, Shanghai Astronomical Observatory, Chinese Academy of Sciences, 80 Nandan Road Shanghai 200030, China

⁴ Cahill Center for Astronomy and Astrophysics, California Institute of Technology, 1200 E California Blvd., Pasadena, CA 91125, USA

⁵ Institute of Space Science, National Central University, 300 Jhongda Road, Jhongli 32001, Taiwan

⁶ Department of Physics, National Central University, 300 Jhongda Road, Jhongli 32001, Taiwan

⁷ Department of Natural Sciences and Sustainable Development, Ministry of Science and Technology, 106, Sec. 2, Heping E. Rd., Taipei 10622, Taiwan

⁸ Spitzer Science Center, California Institute of Technology, M/S 314-6, Pasadena, CA 91125, USA

⁹ Department of Astronomy, University of Maryland, College Park, MD 20742, USA

¹⁰ Department of Astrophysical Sciences, Princeton University, Princeton, NJ 08544, USA

¹¹ Kavli-Institute for the Physics and Mathematics of the Universe, University of Tokyo, Kashiwanoha 5-1-5, Kashiwa-shi, Chiba, Japan

¹² Department of Particle Physics and Astrophysics, The Weizmann Institute of Science, Rehovot 76100, Israel

¹³ Division of Physics, Mathematics and Astronomy, California Institute of Technology, Pasadena, CA 91125, USA

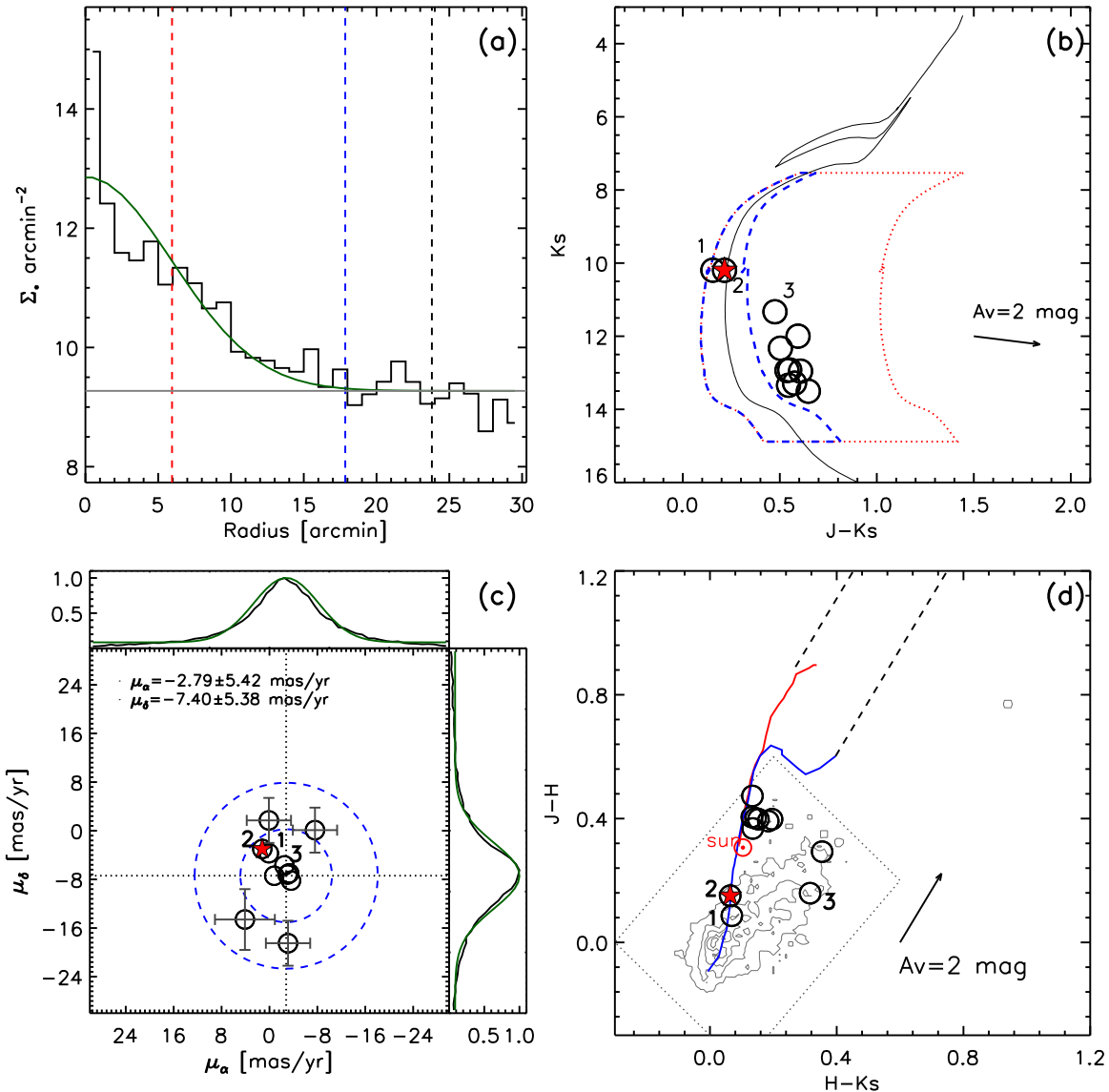


Figure 1. Membership identification. In Figure (b) – (d), open circles represent our Be star candidates, while the red pentagram is the known Be star VES 72. Numbers represent spectroscopically confirmed Be stars NGC6830-1, NGC6830-2, and NGC6830-3 in this study. (a) Radial density profile of NGC 6830. The gray horizontal line indicates the background density. The green curve show the best Gaussian fitting results while red and blue vertical lines represent the width of 1σ and 3σ . The black vertical line shows the width of the Gaussian curve of 4σ . (b) 2MASS color-magnitude diagram. The black solid line indicates the isochrone (Girardi et al. 2002) of 125 Mys located at 1.8 kpc. Be candidates are considered to have photometric membership within the red-dashed region, while non-emission-line stars are considered to have photometric membership within the blue-dashed region. (c) Stellar PMs distribution of Be candidates of NGC 6830. The PM of NGC 6830 is $(\mu_\alpha, \mu_\delta) = (-2.79, -7.40)$ mas year $^{-1}$. The inner and outer blue-dashed circles represent $1\sigma_\mu$ and $2\sigma_\mu$ regions. We adopted 2σ region to define the kinematic membership. The bars are errors of the PMs. The upper and right panels show the μ_α and μ_δ of stars within $48' \times 48'$; green lines show the Gaussian fitting to PMs. (d) 2MASS color-color magnitude diagram. The gray contours show known Be stars distribution, and we define dashed box to select possible Be candidates.

Raddi et al. 2015; Lin et al. 2015). Because stars in clusters share age and metallicity, Be stars in a sample of clusters with different ages play an essential role in the study of their evolution. Previous studies have searched for emission-line objects in a number of star clusters in the SMC (Fabregat & Torrejón 2000; Keller et al. 2001; Wisniewski & Bjorkman 2006; Martayan, Baade, & Fabregat 2010; Mathew, Subramaniam, & Bhatt 2008; Mathew & Subramaniam 2011). Particularly, McSwain & Gies (2005) provided the most extensive survey of Be stars in the MW; they investigated 55 clusters and concluded that 73% of the rapid rotators

might be spun-up by the effect of mass transfer between binaries. Moreover, McSwain, Huang, & Gies (2009) also showed that the distributions of projected rotational velocity of Be stars and normal B-type stars are significantly different, indicating that they might be different stellar populations, and Be stars cannot be drawn from a sample of normal B stars. Theoretical simulations also imply that most Be stars could be formed during the phase of binary interactions (de Mink et al. 2013; Shao & Li 2014). These studies further supported a spin-up scheme for the evolutionary sequence of Be stars.

Nevertheless, the sample of Be stars in open clus-

ters is far from complete due to several difficulties: (1) a comprehensive spectroscopic survey is time consuming, (2) spectroscopic surveys are often limited to bright stars. Therefore, with the wide field of view (7.3 square degree) of the 48 inch Samuel Oschin Telescope, the Palomar Transient Factory (PTF; Law et al. 2009) project provides an efficient way to search for emission-line candidates in open clusters using H α imaging photometry (Yu et al. 2015). Furthermore, a new instrument called the SED-Machine (Ben-Ami et al. 2012; Ngeow et al. 2013; Ritter et al. 2014) provides a possible solution for the fast and efficient follow-up spectroscopic observations for the emission-line candidates found in PTF, because the highly efficient SED-Machine is designed to classify transient events rapidly with a low resolution ($\lambda/\delta\lambda\sim 100$) integrated field unit (IFU) spectrograph that covers a large wavelength range (370 to 920 nm). Thus, a comprehensive survey of Be stars in star clusters can be accomplished with a combination of the PTF H α imaging photometry and the SED-Machine.

Here we present the results of searching for Be stars in an open cluster NGC 6830 ($\alpha_{2000} = 19^{\text{h}}50^{\text{m}}59^{\text{s}}$, $\delta_{2000} = 23^{\circ}06'00''$). NGC 6830, located at a distance of 1.8 kpc (Kharchenko et al. 2013) in the constellation Vulpecula (Barkhatova 1957), has a fairly loose structure. In contrast to our previous work (NGC 663 with an age of ~ 31 Myrs, Yu et al. 2015), the age of NGC 6830 is about 125 Myrs (Kharchenko et al. 2013) and only one Be star has been reported in this cluster (Hoag & Applegate 1965) prior to our work. Using the relation of effective temperature and age, Peña et al. (2011) determined that the age of NGC 6830 is $\log(\text{age}) = 7.69$ yr (48.9 Myrs) with the hottest star (17,000 K) in the membership of 19 stars. It seems that the age given by Kharchenko et al. (2013) is not consistent with that of Peña et al. (2011). However, while the membership in Peña et al. (2011) is only determined from the distance, Kharchenko et al. (2013) included the proper motions (PMs) to determine the membership and give the $\log(\text{age}) = 8.105 \pm 0.062$ yr (125 Myrs). Furthermore, the range of the effective temperature for the membership in Peña et al. (2011) is from 12,000 to 17,000 K, indicating the $\log(\text{age})$ is between 7.69 and 8.22 yr, which is also consistent with the age given by Kharchenko et al. (2013). Thus, here we adopted the age given by Kharchenko et al. (2013).

In addition to the age difference, we selected NGC 6830 as the subject of this work because the known Be star is fairly bright and hence it is suitable to be observed with the SED-Machine during its commissioning runs. Therefore, the main goal of this work is to demonstrate the capability of the combined PTF H α imaging photometry, the archival 2MASS and proper motions data, and the SED-Machine in the search of Be stars in open clusters. This will lay the foundation of our future work in this area. In Section 2, we describe the methodology of identifying emission-line stars and determination of cluster membership using the PTF H α imaging photometry. In Section 3 and 4, we describe our spectroscopic observations and present our results based on these observations. Section 5 gives a summary and discussion of this study.

2. IDENTIFICATION OF BE CANDIDATES AND MEMBERSHIP

The methodology of searching for Be star candidates and identifying membership has been presented in our pilot project. Further details can be found in Yu et al. (2015) and will not be repeated here. Briefly, procedures that we followed in this study are summarized below:

(1) Determining the searching region based on the radial density profile. The stars were selected from the PPMXL data set with the $S/N \geq 10$ in 2MASS J , H , and K_s bands. The half-Gaussian fitting gives a 3σ radius of $17.85'$ (Figure 1a). Because open clusters have irregular shapes, we therefore adopted a box with the side of $48'$ (4σ) as our searching region for NGC 6830 to cover possible candidates.

(2) Applying the H α imaging photometry to identify possible H α emitters. The H α emitters should have a significant flux excess in the on-line image than in the off-line image, where the on-line and off-line images were taken through the HA 656 and HA 663 narrow-band filters. These images were processed for bias corrections, flat fielding, and astrometric calibration with pipelines developed at the Infrared Processing and Analysis Center (IPAC; Laher et al. 2014). Following the methods and criteria as given in Yu et al. (2015), we selected the H α emitter candidates that stand out in the plot of the differential HA663–HA656 flux as possible H α emitters (see Figure 2).

(3) Verifying the photometric membership using near-infrared data. The near-infrared J , H , and K_s bands data are obtained from the 2MASS point source catalog (Cutri et al. 2003). Possible photometric members of NGC 6830 are determined by selecting stars within the region that are near the isochrone in the 2MASS K_s versus $J - K_s$ color-magnitude diagram (Figure 1b). Considering that Be stars might exhibit a large infrared excess (Lee & Chen 2011), we extended the selection region to $J - K_s \sim 1.2$ mag (Figure 1b) for the H α emitter candidates.

(4) Verifying the kinematic membership using the PMs. Because about 10% objects in PPMXL data include spurious entries (Röser et al. 2010), Kharchenko et al. (2012) have averaged their PMs and computed errors. Thus, we used PMs provided by Kharchenko et al. (2012) to calculate the averaged PM (μ_α, μ_δ) and standard deviations ($\sigma_{\mu_\alpha}, \sigma_{\mu_\delta}$) of stars within the $47.6' \times 47.6'$ region by fitting a Gaussian distribution to the PMs. The adopted σ_μ included the error propagated from σ_{μ_α} and σ_{μ_δ} . Stars were then considered as the kinematic membership if their PMs are within the $2\sigma_\mu$ region (Figure 1c).

(5) Selecting possible Be stars from emission-line candidates based on $J - H$ versus $H - K_s$ color-color diagram (CMD). The gray contours as shown in Figure 1d represent the region of 1185 known Be stars (Zhang et al. 2005). Under the assumption that most Be stars have similar infrared colors, we identified Be star candidates as those in NGC 6830 inside the gray-dashed region in the CMD.

Using the above criteria, we identified 11 Be star candidates (Table 1). One candidate was confirmed as the known Be star VES 72 in the cluster NGC 6830 (listed as NGC 6830-2 in Table 1; Hoag & Applegate 1965).

3. SPECTROSCOPIC OBSERVATIONS AND DATA REDUCTION

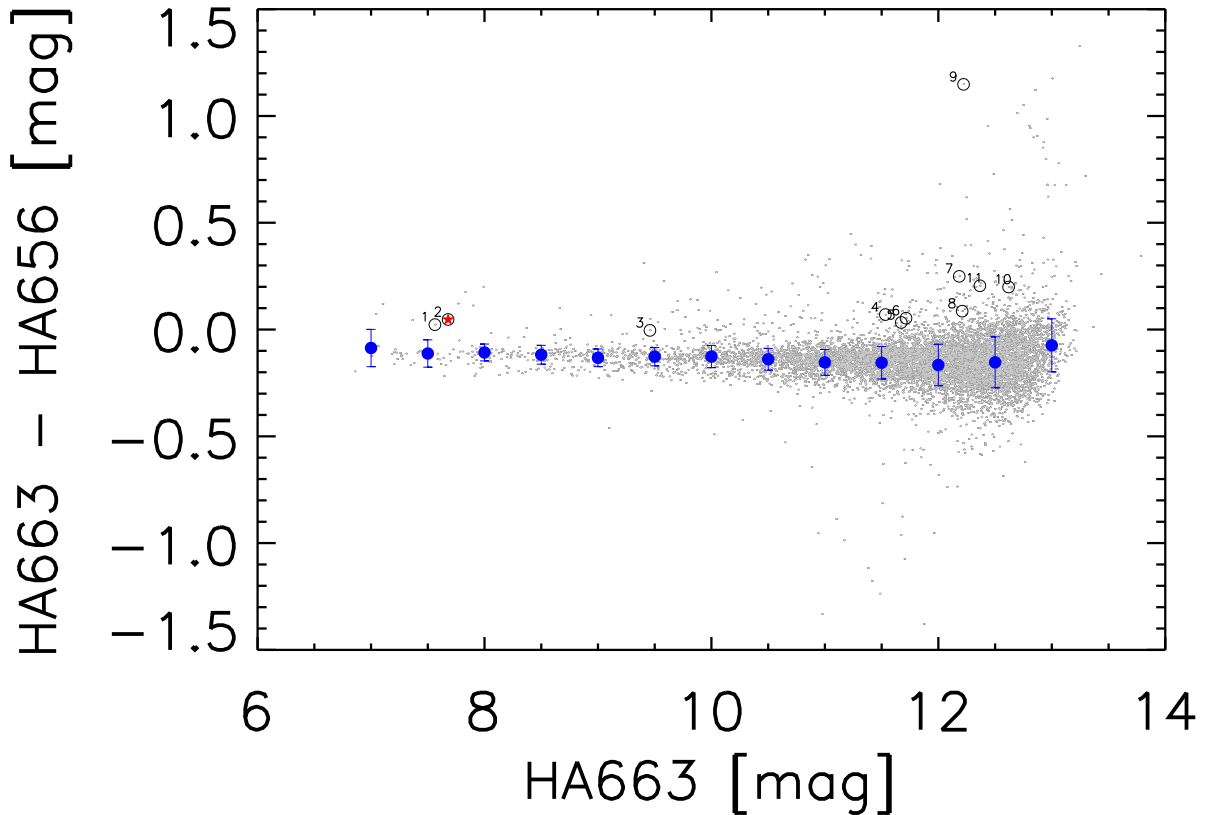


Figure 2. $H\alpha$ emitter candidates selection. Gray dots: stars used for calculating photometric scattering; open circles: emission-line candidates with membership confirmation; numbers represent Be candidates NGC6830-1 – NGC6830-11; red pentagram: known Be stars VES 72. Blue filled circles represent mean values of $HA663 - HA656$ values within each 0.5 mag bin. The error bars represent the photometric scattering σ_p , which are calculated with the error propagated from photometric and systematic errors. Stars with $HA663 - HA656 > \text{mean} + 2\sigma_p$ are selected as emission-line candidates.

3.1. SED-Machine Observations

To demonstrate the feasibility and capability of the SED-Machine in the study of Be stars, we obtained the optical spectra of two bright objects, VES 72 (NGC 6830-2) and a new Be star candidate NGC 6830-1 during its commission runs. Logs of observations are listed in Table 2. Due to time constraints during the commission runs, we only observed the two brightest candidates but not all of our 11 candidates. The SED-Machine, mounted on the Palomar 1.5-m telescope, observations were carried out on 2014 May 1 under a seeing of approximately $2''$.

The SED-Machine IFU spectra were reduced independently with the pipelines developed by the NCU and the Caltech PTF team. The IFU data reduction procedures consist of the following: (1) Overscan and bias subtraction; (2) Automatically spectrum identification using a Xe arc-lamp spectra image; (3) Calculating wavelength calibration solutions of every IFU spectra using HgNeXe lamp sources; (4) Simple-sum extraction of all spectra; (5) Reconstructing the image of the sky as seen before prism from surrounding sky identification; (6) Object spectrum extraction with sky spectra subtraction, wavelength calibration and flux calibration.

3.2. LOT Observations

To confirm the $H\alpha$ detection from SED-Machine observations, we re-observed NGC 6830-1 using the Hiyoyu spectrograph on the Lulin One-meter Telescope (LOT). The LOT observations were conducted on 2014 Aug 2 under a seeing of approximately $1.5''$. Using a grating of 300 mm^{-1} and a slit width of $2''$, we covered a wavelength range of $3800 - 7600 \text{ \AA}$. The Hiyoyu spectrum was reduced with the IRAF¹ package, following the standard data reduction procedure, i.e., dark, bias-subtracted, flat-fielding-corrected, wavelength calibration, and flux calibration. The wavelength calibration was performed using a HeNeAr lamp. The flux calibration might be not very accurate due to the unstable weather during the observation.

3.3. Lick Observations

We used the Kast dual spectrograph on the 3-m Shane telescope at Lick observatory to complete the confirmation of spectral typing of the 11 Be star candidates. The

¹ Image Reduction and Analysis Facility. IRAF is written and supported by the National Optical Astronomy Observatories (NOAO) in Tucson, Arizona.

Table 1
Be Candidates

ID	R.A. (hh:mm:ss)	Decl. (hh:mm:ss)	μ_α (mas yr ⁻¹)	μ_δ (mas yr ⁻¹)	epm (mas yr ⁻¹)	K_s (mag)	$J-H$ (mag)	$H-K_s$ (mag)	HA663 (mag)	HA663-HA656 (mag)
NGC 6830-1	19:51:00.47	+23:06:50.6	0.10	-3.70	1.50	10.350	0.086	0.069	7.563	0.023
NGC 6830-2	19:50:58.55	+23:08:28.4	1.20	-3.00	1.50	10.412	0.151	0.064	7.679	0.047
NGC 6830-3	19:51:58.13	+22:44:59.8	-3.30	-7.00	3.70	11.806	0.159	0.316	9.458	-0.004
NGC 6830-4	19:50:02.31	+23:00:15.2	-3.60	-8.20	3.70	12.831	0.368	0.135	11.533	0.070
NGC 6830-5	19:50:05.02	+23:02:55.2	-2.50	-5.70	3.70	12.592	0.398	0.196	11.673	0.033
NGC 6830-6	19:50:04.61	+23:20:27.3	-7.60	0.10	3.70	13.473	0.405	0.132	11.715	0.053
NGC 6830-7	19:52:08.58	+22:59:59.8	4.10	-14.60	5.00	14.151	0.293	0.354	12.184	0.249
NGC 6830-8	19:50:02.94	+23:02:40.2	-3.00	-7.20	3.70	13.474	0.398	0.153	12.210	0.086
NGC 6830-9	19:52:10.97	+23:17:06.0	-0.80	-7.40	3.70	13.562	0.473	0.134	12.222	1.148
NGC 6830-10	19:52:25.39	+22:49:11.6	0.10	1.70	3.70	13.886	0.401	0.144	12.619	0.199
NGC 6830-11	19:51:07.65	+23:24:32.6	-3.10	-18.50	3.70	13.859	0.392	0.184	12.366	0.205

Note. — Column 1: ID of candidates. Column 2: R.A. in sexagesimal format (J2000). Column 3: decl. in sexagesimal format (J2000). Column 4: proper motion of R.A. Column 5: proper motion of decl. Column 6: PM uncertainties. Column 7: K_s -band magnitudes adopted from 2MASS. Column 8: $J-H$. Column 9: $H-K_s$. Column 10: instrumental magnitude of the HA663 filter. Column 11: HA663-HA656 magnitude difference.

Table 2
Observation Log and Results

ID	Date	Telescope	Instrument	Time	R-band	Type
NGC 6830-1	2014/May/1	Palomar 60 inch	SED Machine	300s	11.19	Be
NGC 6830-2	2014/May/1	Palomar 60 inch	SED Machine	300s	11.51	Be
NGC 6830-1	2014/Aug/2	Lulin One-meter	HIYOYU	1200s	11.19	Be
NGC 6830-1	2015/June/15	Lick 3-meter	Kast Dual Spectrograph	600s	11.19	Be
NGC 6830-2	2015/June/15	Lick 3-meter	Kast Dual Spectrograph	600s	11.51	Be
NGC 6830-3	2015/June/15	Lick 3-meter	Kast Dual Spectrograph	1200s	13.24	Be
NGC 6830-4	2015/June/15	Lick 3-meter	Kast Dual Spectrograph	1200s	15.28	A
NGC 6830-5	2015/June/15	Lick 3-meter	Kast Dual Spectrograph	1200s	14.98	G
NGC 6830-6	2015/June/16	Lick 3-meter	Kast Dual Spectrograph	1500s	14.98	G
NGC 6830-7	2015/June/16	Lick 3-meter	Kast Dual Spectrograph	1500s	15.59	G
NGC 6830-8	2015/June/15	Lick 3-meter	Kast Dual Spectrograph	1200s	15.69	G
NGC 6830-9	2015/June/16	Lick 3-meter	Kast Dual Spectrograph	1500s	15.89	G
NGC 6830-10	2015/June/16	Lick 3-meter	Kast Dual Spectrograph	1200s	16.18	G
NGC 6830-11	2015/June/16	Lick 3-meter	Kast Dual Spectrograph	1500s	15.93	G

Note. — Column 1: ID of targets. Column 2: Observations dates. Column 3: Telescope name. Column 4: Instrument name. Column 5: Exposure time in seconds. Column 6: R-band magnitudes adapted from PPMXL catalog. Column 7: Spectral types.

observing runs were conducted on 2015 June 15 – 16 under a seeing of $1.5'' - 2''$ using a $2''$ slit width. Using 600/7500 grating on the red side and 600/4310 grism on the blue side, we can cover a wavelength range of $3500-7800\text{\AA}$. The dispersion on the red side and blue side is $2.32\text{\AA}/\text{pixel}$ and $1.85\text{\AA}/\text{pixel}$, respectively. We reduced the spectra using the standard tools in IRAF, including corrections for overscan bias and flat-fielding using the dome flat images. We used NeHg-Cd arc lamps for wavelength calibrations, and standard stars Feige 92 and BD+28 4211 for flux calibration.

4. RESULTS

4.1. SED-Machine and LOT Spectra

In Figure 3 we showed the SED-Machine spectra of the bright Be stars NGC 6830-1 and VES 72 (NGC 6830-2). The spectrum of VES 72 shows prominent $H\alpha$ emission line, and clear hydrogen and He $\lambda\lambda 4471 + \text{Mg II}\lambda 4481$ absorption lines. We further observed the new Be candidate NGC 6830-1 using the SED-Machine, and the Hiyoyu spectrograph mounted on the LOT. Both SED-Machine and LOT spectra present a clear detection of the $H\alpha$ emission line, and hydrogen and He $\lambda\lambda 4471 + \text{Mg II}\lambda 4481$ absorption lines, indicating a Be type. With a spectral

resolution $\lambda/\delta\lambda \sim 333$ of the Hiyoyu spectrograph, we estimated an equivalent width of $H\alpha$ emission-line, $\text{EW}[H\alpha] = -5\text{\AA}$ for NGC 6830-1. Although the spectral resolution is too poor to classify the spectral subtype, the similar brightness of NGC 6830-1 to VES 72 suggests similar subtypes (e.g. B6 type).

4.2. Lick Spectra

We present the spectra of Be star candidates obtained by Lick 3-m Shane telescope in Figure 4. Only three Be star candidates (NGC6830-1, NGC6830-2, and NGC6830-3) show $H\alpha$ emission and B-type spectra. All candidates are discussed in the following subsections.

4.2.1. Confirmed Be Stars

(1) NGC 6830-1: This candidate shows a prominent $H\alpha$ emission line with the $\text{EW}[H\alpha]$ of -7\AA and hydrogen absorption lines of $H\beta$, $H\gamma$, $H\epsilon$, $H\delta$. The $\text{EW}[H\alpha]$ is similar to that of the LOT observation. It also shows He $\lambda\lambda 4026$, He $\lambda\lambda 4387$, and He $\lambda\lambda 4471 + \text{Mg II}\lambda 4481$ absorption lines, the features of B-type stars. We thus confirmed the candidate as a newly discovered Be star.

(2) NGC 6830-2: NGC68302 is a known Be star VES 72, a B6 type star with photoelectric observations

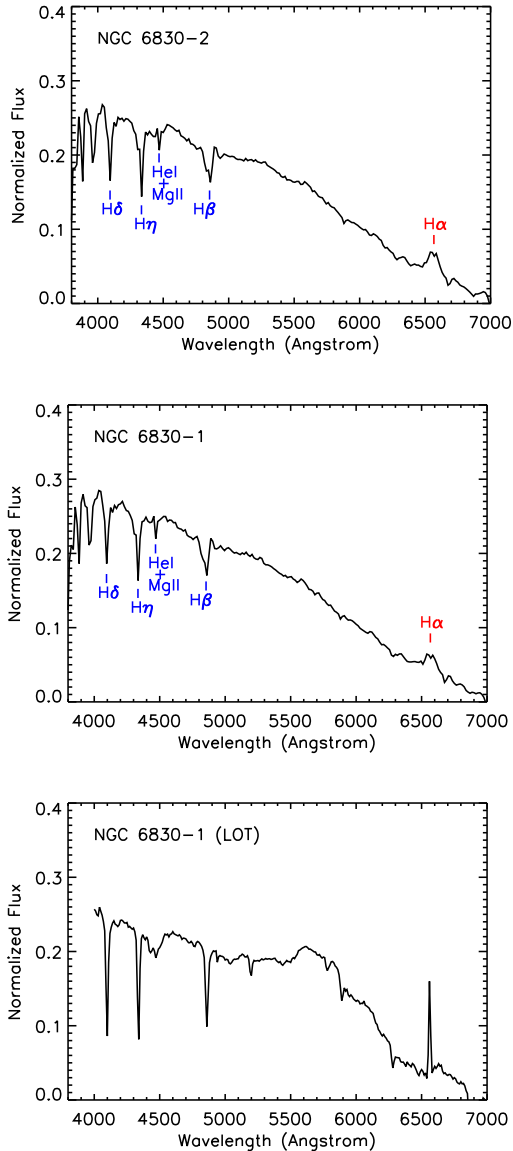


Figure 3. SED-Machine results. The unit of the y-axis is normalized fluxes at 7000Å in logarithm. Upper panel: SED-Machine spectrum of the known Be star VES 72. We detect the clear H α emission-line while other Balmer series show absorption features. Middle panel: We also detected a clear H α emission-line for the Be star candidate NGC6830-1 with the SED-Machine. Lower panel: The H α emission-line also appears in the LOT spectrum for the same candidate.

(Hoag & Applequist 1965). We also detected the H α emission line, with the $EW[H\alpha] = -9\text{\AA}$. It shows similar hydrogen and helium/magnesium absorption lines as in NGC 6830-1.

(3) NGC 6830-3: The star shows the H α line in emission with the $EW[H\alpha] = -8\text{\AA}$. In addition to the same hydrogen and helium/magnesium absorptions lines detected in NGC 6830-1 and NGC 6830-2, it also shows the He I λ 4009 absorption line. We thus classified the star as a Be star. The star is 2 mag fainter than NGC 6830-1 and NGC 6830-2, implying a late-type B9 stars.

4.2.2. Non-Be Star Candidates

(4) NGC 6830-4: We do not detect the H α emission line for the star, and it shows the Ca II K absorption line, indicating the star might be a late-A or F-type star.

(5) NGC 6830-5: It shows not only the Ca II K absorption line, but also the G-band absorption at 4300Å. The star is classified as a G-type star.

(6) NGC 6830-6 – NGC 6830-11: Compared to NGC 6830-5, these stars show a stronger G-band absorption, and weaker H γ and He ϵ absorption lines. We classify NGC 6830-6 – NGC 6830-11 as G-type stars.

4.3. Infrared Color

The Be star NGC 6830-3 shows infrared excess $H - K_s = 0.316$ (Figure 1d), as in many known Be stars. Such infrared excess can be explained by free-free emission from circumstellar disks (Lee & Chen 2011). For comparison, we included the fluxes of 3.4 μm (W1), 4.6 μm (W2), 12 μm (W3) and 22 μm (W4) from Wide-field Infrared Survey Explorer (WISE; Wright et al. 2010), and plotted in Figure 5 the spectral energy distribution between 0.4 μm and 25 μm of three Be stars (Table 3). All of the objects have no significant 22 μm detection, suggesting no presence of warm dust. Although the detection is only an upper-limit, it seems that NGC 6830-3 might have a different W3–W4 color from NGC 6830-1 and NGC 6830-2. Observations with high resolution and sensitivity are in demand to confirm the 22 μm detection in NGC 6830-3 in the future.

4.4. Optical Variability

Be stars are also known as photometric and spectroscopic variables. Their variabilities show a wide range of timescales from much less than a day (Percy et al. 2002) to more than decades (Okazaki 1997). Compare to normal B type stars, photometric irregular variation is frequently seen in Be stars (Kourniotis et al. 2014). There are three types of variability found in Be stars: (1) short-term variability with time scales of days (Hubert et al. 1997); (2) mid-term variability with time scales of days and weeks with the amplitude of 0.3 mag (Okazaki 1997; Hubert & Floquet 1998); (3) long-term variability with time scales of years and larger amplitudes of > 0.3 mag (Hubert & Floquet 1998). Since the PTF R-band light curve data saturated around 14th magnitudes, we adopted the V-band light curve data from the All Sky Automated Survey (ASAS; Pojmański 2002) to investigate the variability of our detected Be stars. The ASAS is a project to monitor stars brighter than 14 magnitudes to investigate their photometric variability; thus it is suitable to search for long-term variability with large amplitude > 0.3 mag for Be stars. We chose two stars, star1 and star2 in the same field, as the photometric references to build up the light curves using differential photometry technique. We only used the data with grade A from ASAS catalog, i.e., best data with photometric uncertainties < 0.05 mag in the catalog. The value σ_{sc} was defined as the standard deviation of magnitude difference between the reference and the Be stars, and used to determine the significance of the variability. The σ_{sc} against star1 and star2 of NGC6830-1, NGC6830-2, and NGC6830-3 are 0.15 and 0.14, 0.14 and 0.16, and 0.26 and 0.23 mag, respectively (Figure 6). These σ_{sc} values are all comparable with the systematic errors of

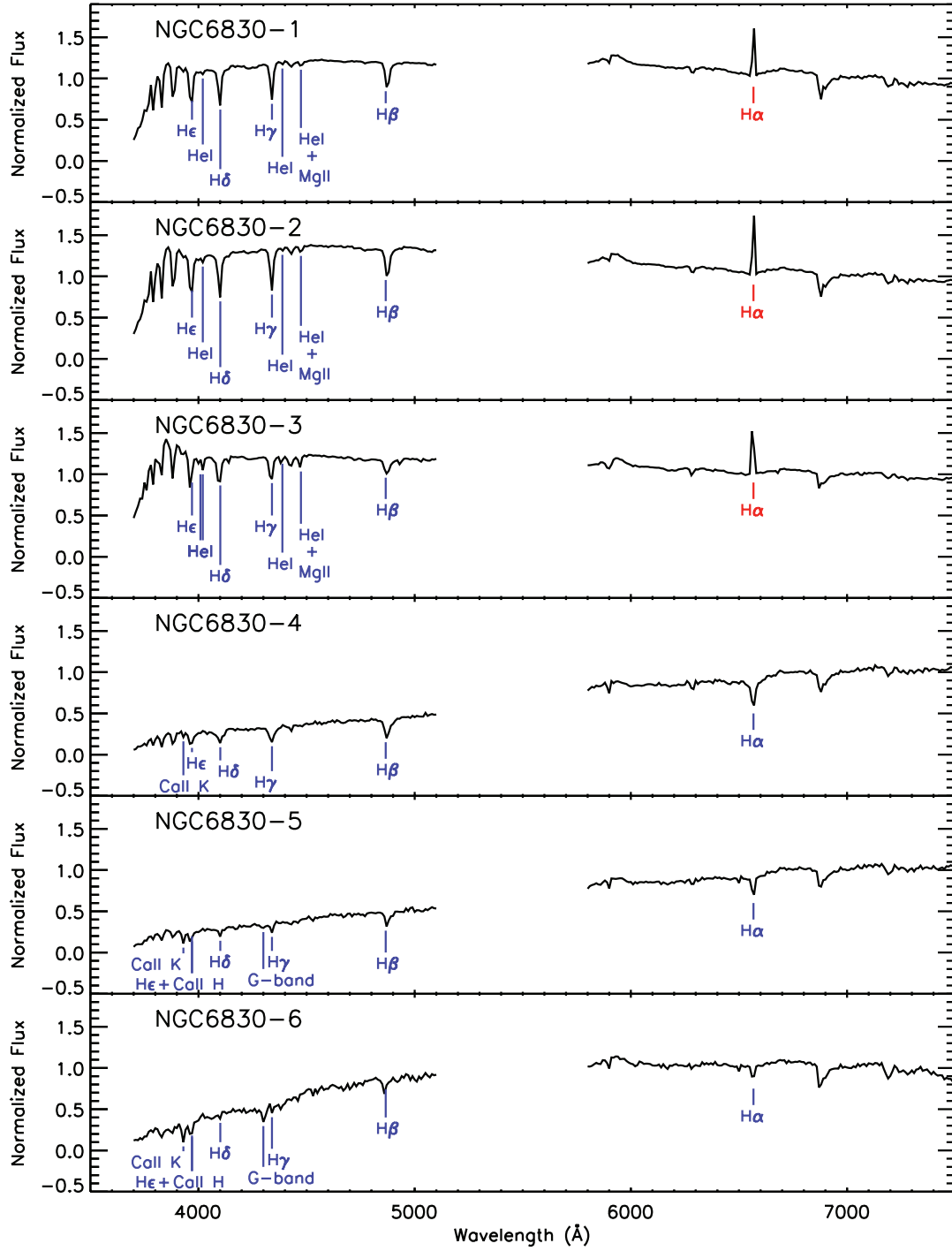


Figure 4. Lick spectra of Be star candidates. Fluxes are normalized at 7000 \AA .

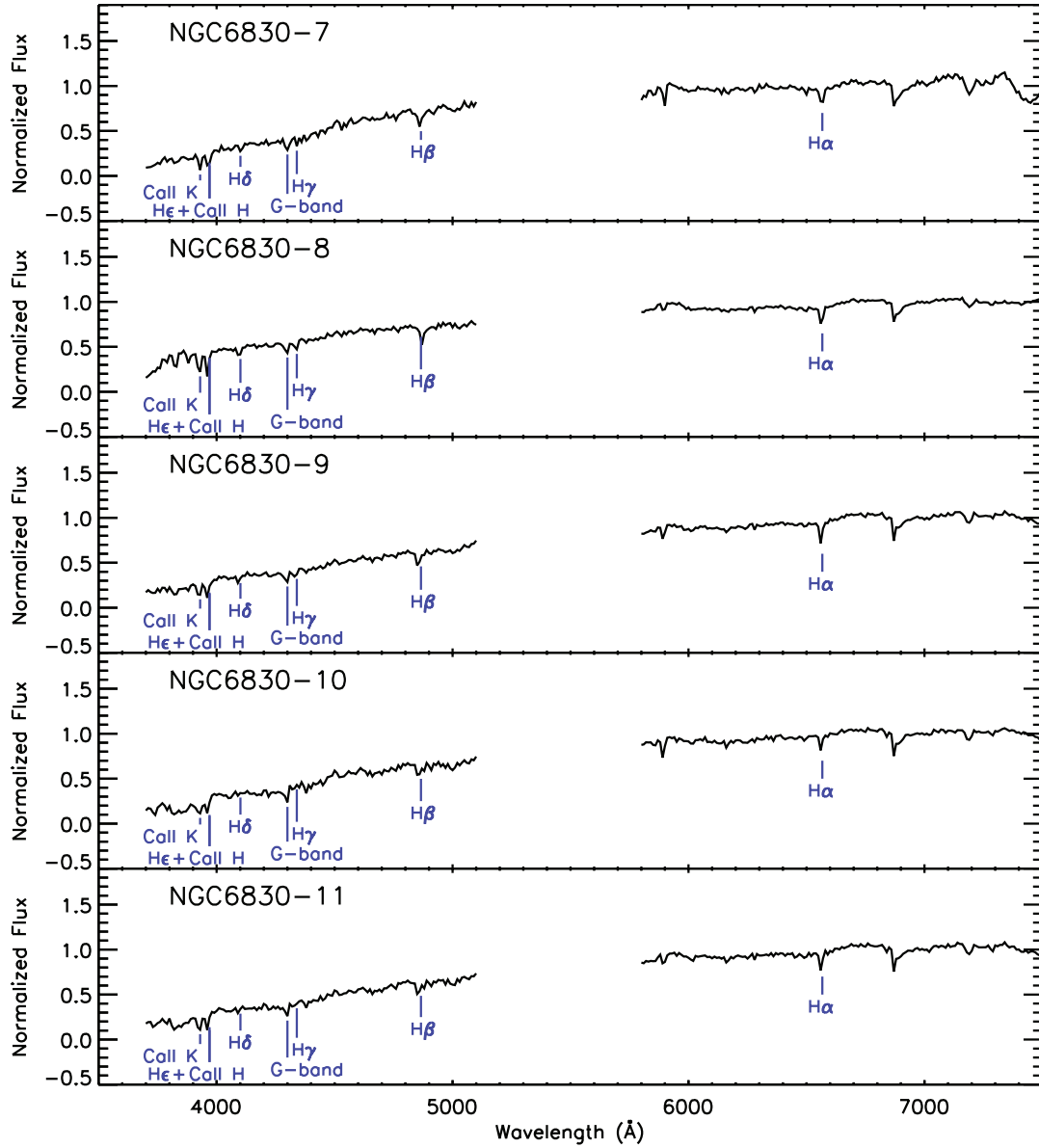


Figure 4 (Cont.). Lick spectra of Be star candidates

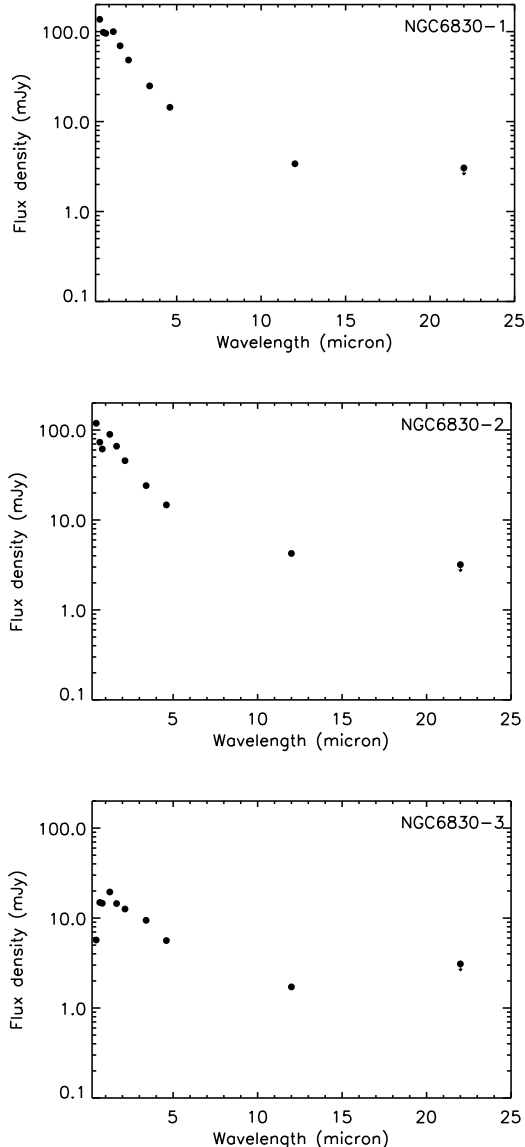


Figure 5. Spectral energy distribution between $0.4\mu\text{m}$ and $25\mu\text{m}$. Detections at $22\mu\text{m}$ for these Be stars are upper-limit. Flux density of 445 nm , 658 nm , and 806 nm are adopted from PPMXL; flux density of 1.25 , 1.65 , and $2.15\mu\text{m}$ are adopted from 2MASS; 3.4 , 4.6 , 12 , and $22\mu\text{m}$ flux density are adopted from WISE. corresponding magnitudes in ASAS (Pojmański 2002). Therefore, we do not detect any significant long-term variability in optical band for these three Be stars.

5. SUMMARY AND DISCUSSION

In summary, we apply PTF’s $H\alpha$ imaging photometry to identify 11 Be star candidates in NGC 6830. Three stars have been confirmed as Be stars with intermediate and late type spectra by using the SED-Machine on Palomar 1.5-m telescope, the Hiyoyu spectrograph on Lulin 1-m telescope, and the Kast dual spectrograph on Lick 3-m telescope. We suggest that there are three Be stars in the cluster NGC 6830. The spatial distribution of the Be stars might be caused by gravitational disruption over time. We also present the results of the SED-Machine; this study demonstrated that the high efficiency of the SED-Machine can provide rapid observations for Be stars

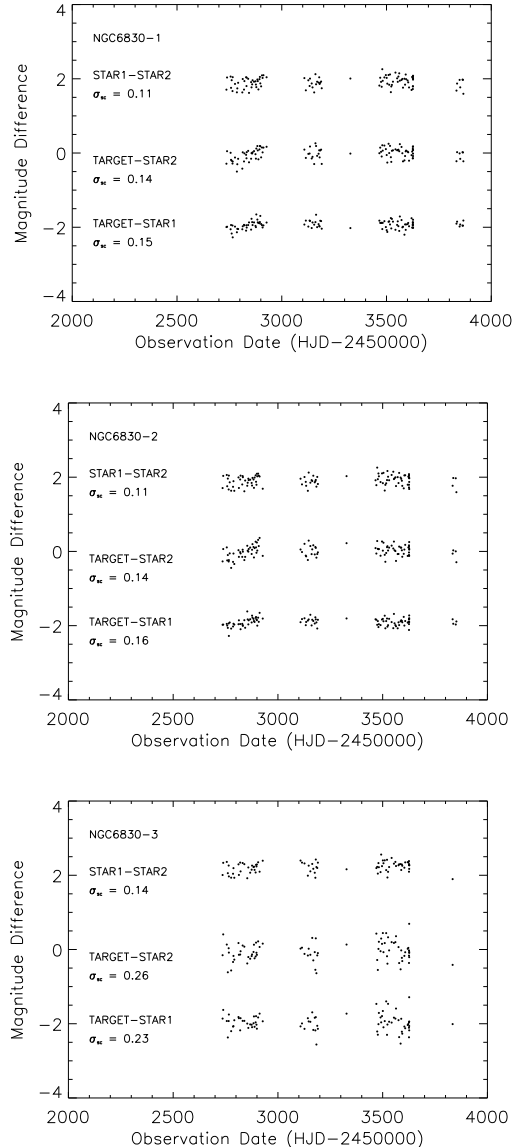


Figure 6. Differential photometry of Be stars in NGC 6830.

in a comprehensive survey in the future.

We suggest that there are three Be stars in the cluster NGC 6830. McSwain & Gies (2005) studied the fraction of Be stars in eight clusters with an age older than 100 Myr; only four clusters have up to two Be stars. These results indicate that old open clusters lack Be stars. Although our results are consistent with the previous conclusions, it should be noted that either the relaxation process or Galactic external perturbation (Chen et al. 2004) might have happened in open clusters. As shown in Figure 7, the Be star NGC6830-3 is located in the outer region of the cluster, while NGC6830-1 and NGC6830-2 are located in the central region. With an age of 125 Mys, the open cluster NGC 6830 might have a very irregular shape and become loose. The spatial distribution of Be stars could be the consequence of the relaxation process. Since McSwain & Gies (2005) searched Be stars within a fixed angular size, more Be stars could be discovered if a larger size would have been

Table 3
Flux density of Be Stars in NGC 6830

ID	0.445 μ m (mJy)	0.658 μ m (mJy)	0.806 μ m (mJy)	1.25 μ m (mJy)	1.65 μ m (mJy)	2.2 μ m (mJy)	3.4 μ m (mJy)	4.6 μ m (mJy)	12 μ m (mJy)	22 μ m (mJy)
NGC 6830-1	137	98.3	95.7	100	69.6	48.3	24.9	14.4	3.397	3.053
NGC 6830-2	119	73.2	61.5	89.5	66.1	45.6	24.1	14.7	4.245	1.717
NGC 6830-3	5.7	14.9	14.6	19.5	14.5	12.6	9.434	5.621	1.717	3.093

Note. — Column 1: ID of targets. Column 2 to 11: Flux density in mJy adopted from PPMXL, 2MASS, and WISE catalog. The detections at 22 μ m for three Be stars are upper-limit.

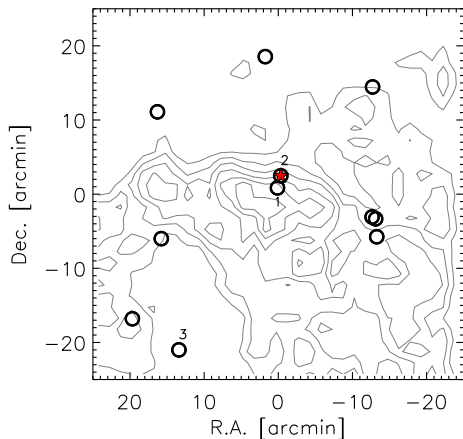


Figure 7. Spatial distribution of Be star candidates. The open circles: Be star candidates; red pentagram: the known Be star VES 72. Contours represent distribution of stars within a field of 50' \times 50'.

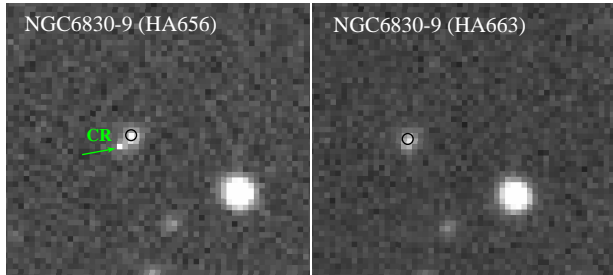


Figure 8. HA656 (Left) and HA663 (Right) images of NGC6830-9. Green arrow indicates the residual cosmic-ray. Black open circles represent the position of NGC 6830-9.

used.

Dachs et al. (1988) proposed an empirical relation between the disk fraction f_D and the EW[H α] for Be stars:

$$f_D \simeq 0.1 \times \frac{EW[H\alpha]}{-30\text{\AA}}, \quad (1)$$

where f_D is the ratio of disk radiation to total radiation of the star-disk system. The EW[H α] of the Be stars in NGC 6830 are all $> -10\text{\AA}$, suggesting the disc fraction $f_D < 0.03$. The result is consistent with Dachs et al. (1988), who showed that most late-type Be stars (B4 – B7) have $f_D < 0.1$, while most early-type Be stars (B1 – B3) have $f_D > 0.1$.

Several mechanisms might cause long-term variability in Be stars: (1) long-lived strong outbursts (Hubert & Floquet 1998); (2) decline of brightness due to cooling envelope (Koubský et al. 1997); (3) weak

brightness change related to H α variability. The brightness of NGC 6830-1 and NGC 6830-2 allow us to investigate the variability with the amplitude larger than 0.15 mag using ASAS data set. We do not discover any significant variability for NGC 6830-1 and NGC 6830-2. This is consistent with the previous studies; Hubert & Floquet (1998) showed that only 12% of B6-type Be stars have the variability with the amplitude of 0.12 to 0.3 mag. Because large amplitude caused by strong outbursts usually seen in earliest Be stars, it is not surprised that we do not detect variability in these Be stars.

Finally, as a pilot project to search for Be stars in clusters with different ages, we reviewed our selection criteria for NGC 663 (Yu et al. 2015) and this work. Eight of 11 Be candidates are classified as A- or G-type stars; most of them have marginal H α detection in the HA663–HA656 color diagram (Figure 2). This misidentification can be improved by using the 2MASS color-color diagram. As shown in Figure 1d, if we make the selection region (dashed line) to have similar range as the known Be stars, most G-type stars would have been ruled out. Thus, we will change our selection criteria in our future project. Moreover, it should be noted that the star NGC6830-9 has large H α excess in Figure 2, while the optical spectrum suggested a G-type star with the H α absorption line. This is caused by the contamination of residual cosmic-ray hitting on the target region, which is not easy to be eliminated. Procedures of removing cosmic-ray around science targets will be performed carefully in the future project.

We thank to the referee for her/his constructive comments. We are also grateful to the staff of Lulin and Lick Observatory for helping the observations. This work is supported in part by the National Science Council, and Ministry of Science and Technology of Taiwan under grants MOST 104-2119-M-008-024 (W.-H.I.), MOST 103-2112-M-008-024-MY3 (W.-P.C.), MOST 104-2112-M-008-012-MY3 (C.-C.N.), and NSC 103-2917-I-564-004 (P.-C.Y.). The Lulin Observatory is funded by the Ministry of Science and Technology of Taiwan, and operated by National Central University of Taiwan. The Lick Observatory is funded by Google Inc., and operated by the University of California. This publication makes use of data products from the Two Micron All Sky Survey, which is a joint project of the University of Massachusetts and the Infrared Processing and Analysis Center/California Institute of Technology, funded by the National Aeronautics and Space Administration and the National Science Foundation. This publication makes use of data products from the Wide-field Infrared Survey Explorer, which is a joint project of the University

of California, Los Angeles, and the Jet Propulsion Laboratory/California Institute of Technology, funded by the National Aeronautics and Space Administration.

REFERENCES

- Barkhatova, K. A. 1957, *Soviet Astronomy*, 1, 822
- Ben-Ami, S., Konidaris, N., Quimby, R., Davis, J. T., Ngeow, C. C., Ritter, A., & Rudy, A. 2012, *Proc. SPIE*, 8446, 86
- Carciofi, A. C. & Bjorkman, J. E. 2006, *ApJ*, 639, 1081
- Carciofi, A. C., Okazaki, A. T., le Bouquin, J.-B., et al. 2009, *A&A*, 504, 915
- Chen, W. P., Chen, C. W., & Shu, C. G. 2004, *AJ*, 128, 2306
- Chojnowski, S. D., Whelan, D. G., & Wisniewski, J. P., et al. 2015, *AJ*, 149, 7
- Cutri, R. M., Skrutskie, M. F., van Dyk, S., et al. 2003, *yCat*, 2246, 0
- Dachs, J., Kiehling, R., Engels, D., 1988, *A&A*, 194, 167
- de Mink, S. E., Langer, N., Izzard, R. G., Sana, H., & de Koter, A. 2013, *ApJ*, 764, 166
- Drew, J. E., Greimel, R., Irwin, M. J. et al. 2005, *MNRAS*, 362, 753
- Fabregat, J., & Torrejón, J. M. 2000, *A&A*, 357, 451
- Girardi, L., Bertelli, G., Bressan, A., et al. 2002, *A&A*, 391, 195
- Hoag, A. A., & Applequist, N. L. 1965, *ApJS*, 12, 215
- Hubert, A. M., Floquet, M., & Hao, J. X., et al. 1997, *A&A*, 324, 929
- Hubert, A. M., & Floquet, M. 1998, *A&A*, 335, 565
- Jaschek, C., Jaschek, M., & Kucwicz, B. 1964, *ZA*, 59, 108
- Keller, S. C., Grebel, E. K., Miller, G. J., & Yoss, K. M. 2001, *AJ*, 122, 248
- Kharchenko, N. V., Piskunov, A. E., Schilbach, E., Röser, S., & Scholz, R.-D. 2012, *A&A*, 543, 156
- Kharchenko, N. V., Piskunov, A. E., Schilbach, E., Röser, S., & Scholz, R.-D. 2013, *A&A*, 558, A53
- Koubský, P., Harmance, P., Kubát, J., et al. 1997, *A&A*, 328, 551
- Kourniotis, M., Bonanos, A. Z., & Soszyński, I., et al. 2014, *A&A*, 562, 125
- Kraus, S., Monnier, J. D., & Che, X., et al. 2012, *ApJ*, 744, 19
- Law, N. M., Kulkarni, S. R., & Dekany, R. G., et al. 2009, *PASP*, 121, L1395
- Laher, R. R., Surace, J., & Grillmair, C. J., et al. 2014, *PASP*, 126, 674
- Lee, U., Osaki, Y., & Saio, H. 1991, *MNRAS*, 250, 432
- Lee, C. -D. & Chen, W. -P. 2011, in *IAU Symp.*, 272, Active OB stars: structure, evolution, mass loss, and critical limit, ed. C. Neiner, G. Wade, G. Meynet, & G. Peters (Cambridge: Cambridge Univ. Press, 366)
- Lin, C. C., Hou, J. L., Chen, L., Shao, Z. Y., Zhong, J., & Yu, P. C. 2015, *RAA*, 15, 8
- Mathew, B., Subramaniam, A., & Bhatt, B. C. 2008, *MNRAS*, 388, 1879
- Mathew, B., & Subramaniam, A. 2011, *BASI*, 39, 517
- Martayan, C., Baade, D., & Fabregat, J. 2010, *A&A*, 509, 11
- Mclaughlin, D. B. 1932, *POMIC*, 4, 175
- McSwain, M. V., & Gies, D. R. 2005, *ApJS*, 161, 118
- McSwain, M. V., Huang, W., & Gies, D. R. 2009, *ApJ*, 700, 1216
- Meiland, A., Millour, F., Kanaan, S., Stee, P., Petrov, R., Hofmann, K. H., Natta, A., & Perraut, K. 2012, *A&A*, 538, 110
- Ngeow, C. C., Konidaris, N., & Quimby, R., et al. 2013, in *IAU Symp.*, 290, Feeding Compact Objects: Accretion on All Scales, ed. C. M. Zhang, T. Belloni, M. Méndez & S. N. Zhang (Cambridge: Cambridge Univ. Press, 281)
- Okazaki, A. T. 1997, *A&A*, 318, 548
- Peña, J. H., Machado, L. F., Garcia, H., Renteria, A., Skinner, S., Espinosa, A., & Romero, E. 2011, *Rev. Mex. Astron. Astrofis.*, 47, 309
- Percy, J. R., Hosick, J., Kincaide, H., & Pang, C. 2002, *PASP*, 114, 551
- Pojmański, G. 2002, *Acta Astronomica*, 52, 397
- Pols, O. R., Coté, J., Waters, L. B. F. M., & Heise, J. 1991, *A&A*, 241, 419
- Porter, J. M. & Rivinius, T. 2003, *PASP*, 115, 1153
- Quirrenbach, A., Buscher, D. F., Mozurkewich, D., Hummel, C. A., & Armstrong, J. T. 1994, *A&A*, 283, L13
- Quirrenbach, A., Bjorkman, K. S., Bjorkman, J. E., Hummel, C. A., Buscher, D. F., Armstrong, J. T., Mozurkewich, D., & Elias, N. M. 1997, *ApJ*, 479, 477
- Raddi, R., Drew, J. E., Steeghs, D., Wright, N. J., Drake, J. J., Barentsen, G., Fabregat, J. & Sale, S. E. 2015, *MNRAS*, 446, 274
- Ritter, A., Ngeow, C. C., Konidaris, N., Quimby, R., & Ben-Ami, S. 2014, *COSKA*, 43, 209
- Rivinius, T., Baade, D., & Štefl, S. *A&A*, 411, 229
- Rivinius, T., Carciofi, A. C., & Martayan, C. 2013, *A&ARv*, 21, 69
- Röser, S., Demleitner, M., & Schilbach, E. 2010, *AJ*, 139, 2440
- Shao, Y. & Li, X. D. 2014, *ApJ*, 796, 37
- Townsend, R. H. D., Owocki, S. P., & Howarth, I. D. 2004, *MNRAS*, 350, 189
- Wisniewski, J. P., & Bjorkman, K. S. 2006, *ApJ*, 652, 458
- Wood, K., Bjorkman, K. S., & Bjorkman, J. E. 1997, *ApJ*, 477, 926
- Wright, E. L., Eisenhardt, P. R. M., & Mainzer, A. K., et al. 2010, *AJ*, 140, 1868
- Yu, P. -C., Lin, C. C., & Chen, W. P., et al. 2015, *AJ*, 149, 43
- Zhang, P., Chen P. S., & Yang, H. T. 2005, *New Astronomy*, 10, 325