

UCSF

UC San Francisco Previously Published Works

Title

Endothelin-1 Predicts Hemodynamically Assessed Pulmonary Arterial Hypertension in HIV Infection

Permalink

<https://escholarship.org/uc/item/932466st>

Journal

PLOS ONE, 11(1)

ISSN

1932-6203

Authors

Parikh, Rushi V

Ma, Yifei

Scherzer, Rebecca

et al.

Publication Date

2016

DOI

10.1371/journal.pone.0146355

Copyright Information

This work is made available under the terms of a Creative Commons Attribution License, available at <https://creativecommons.org/licenses/by/4.0/>

Peer reviewed

RESEARCH ARTICLE

Endothelin-1 Predicts Hemodynamically Assessed Pulmonary Arterial Hypertension in HIV Infection

Rushi V. Parikh¹, Yifei Ma², Rebecca Scherzer^{3†}, Amanda S. Heringer^{4†}, John S. Macgregor^{4‡}, Jeffrey N. Martin^{5‡}, Steven G. Deeks^{6‡}, Peter Ganz^{4‡}, Priscilla Y. Hsue⁴*

1 Department of Cardiovascular Medicine, Stanford University, Stanford, California, United States of America, **2** Department of Pediatrics, University of California San Francisco, San Francisco, California, United States of America, **3** Division of Endocrinology and Metabolism, San Francisco VA Medical Center, San Francisco, California, United States of America, **4** San Francisco General Hospital Cardiology Division, University of California San Francisco, San Francisco, California, United States of America, **5** Department of Epidemiology and Biostatistics, University of California San Francisco, San Francisco, California, United States of America, **6** San Francisco General Hospital Positive Health Program, University of California San Francisco, San Francisco, California, United States of America

☉ These authors contributed equally to this work.

‡ These authors also contributed equally to this work.

* priscilla.hsue@ucsf.edu



OPEN ACCESS

Citation: Parikh RV, Ma Y, Scherzer R, Heringer AS, Macgregor JS, Martin JN, et al. (2016) Endothelin-1 Predicts Hemodynamically Assessed Pulmonary Arterial Hypertension in HIV Infection. PLoS ONE 11 (1): e0146355. doi:10.1371/journal.pone.0146355

Editor: James West, Vanderbilt University Medical Center, UNITED STATES

Received: August 4, 2015

Accepted: November 6, 2015

Published: January 11, 2016

Copyright: © 2016 Parikh et al. This is an open access article distributed under the terms of the [Creative Commons Attribution License](https://creativecommons.org/licenses/by/4.0/), which permits unrestricted use, distribution, and reproduction in any medium, provided the original author and source are credited.

Data Availability Statement: All relevant data are within the paper.

Funding: The study received National Institutes of Health grant support from R01HL095130 (PYH), R01HL095126 (PYH), K24AI112393 (PYH). The funders had no role in study design, data collection and analysis, decision to publish, or preparation of the manuscript.

Competing Interests: PYH has received honoraria from Gilead. RS has received an honorarium from Merck. The remaining authors declare no conflicts of

Abstract

Background

HIV infection is an independent risk factor for PAH, but the underlying pathogenesis remains unclear. ET-1 is a robust vasoconstrictor and key mediator of pulmonary vascular homeostasis. Higher levels of ET-1 predict disease severity and mortality in other forms of PAH, and endothelin receptor antagonists are central to treatment, including in HIV-associated PAH. The direct relationship between ET-1 and PAH in HIV-infected individuals is not well described.

Methods

We measured ET-1 and estimated pulmonary artery systolic pressure (PASP) with transthoracic echocardiography (TTE) in 106 HIV-infected individuals. Participants with a PASP ≥ 30 mmHg ($n = 65$) underwent right heart catheterization (RHC) to definitively diagnose PAH. We conducted multivariable analysis to identify factors associated with PAH.

Results

Among 106 HIV-infected participants, 80% were male, the median age was 52 years and 77% were on antiretroviral therapy. ET-1 was significantly associated with higher values of PASP [14% per 0.1 pg/mL increase in ET-1, $p = 0.05$] and PASP ≥ 30 mmHg [PR (prevalence ratio) = 1.24, $p = 0.012$] on TTE after multivariable adjustment for PAH risk factors. Similarly, among the 65 individuals who underwent RHC, ET-1 was significantly associated

interest. This does not alter the authors' adherence to PLOS ONE policies on sharing data and materials.

with higher values of mean pulmonary artery pressure and PAH (34%, $p = 0.003$ and $PR = 2.43$, $p = 0.032$, respectively) in the multivariable analyses.

Conclusions

Higher levels of ET-1 are independently associated with HIV-associated PAH as hemodynamically assessed by RHC. Our findings suggest that excessive ET-1 production in the setting of HIV infection impairs pulmonary endothelial function and contributes to the development of PAH.

Introduction

Pulmonary arterial hypertension (PAH) is a rare but serious clinical complication of HIV infection. HIV-associated PAH carries an exceptionally poor prognosis (median survival 0.5 to 3.6 years depending on NYHA functional class) and is an independent risk factor for HIV-related mortality.[1–3] The prevalence of HIV-associated PAH remains approximately 0.5% even in the highly active antiretroviral therapy (ART) era, a rate that has alarmingly not changed compared to that of pre-ART cohorts.[4,5] However, this prevalence does not include asymptomatic individuals—whom we have previously reported to have high pulmonary artery pressures independent of other risk factors for PAH—and thus may underestimate the actual burden of HIV-associated PAH.[6]

Despite recent advances in the pathogenesis of HIV-associated PAH, the mechanisms by which HIV infection causes endothelial dysfunction and subsequent development of PAH remain poorly defined. The HIV proteins Nef and Tat contribute to key processes in PAH including vasoconstriction, cellular proliferation, inflammation, and thrombosis.[7,8] Our group has recently shown that asymmetric dimethylarginine (ADMA), a marker of nitric oxide mediated endothelial dysfunction that accumulates with chronic inflammation, independently predicts HIV-associated PAH.[9,10]

Endothelins are potent vasoconstricting peptides that have proliferative and pro-inflammatory effects, with the isoform ET-1 being a well-established mediator of pulmonary vascular homeostasis.[11] Among other subtypes of PAH, higher levels of endothelin-1 (ET-1) are predictive of severity and mortality, and endothelin receptor antagonists (ERAs) improve clinical and hemodynamic parameters, making them a mainstay of PAH therapy.[12–18] Bosentan, a non-selective ERA, has similarly been shown to improve clinical outcomes in HIV-infected individuals on ART.[19–21] In HIV infection, the HIV envelope glycoprotein gp120 stimulates macrophages and pulmonary arterial endothelial cells to secrete ET-1.[22,23] A recently published study by Feijoo et al. of 23 HIV-infected patients using Doppler transthoracic echocardiography (TTE) demonstrated that plasma levels of ET-1 were higher among individuals with elevated pulmonary artery systolic pressure (PASP) than among uninfected controls and increased with the severity of PASP.[24] While echocardiography is used to screen for PAH, the gold standard for diagnosis of PAH is hemodynamic assessment by right heart catheterization (RHC).[25]

Collectively, these studies support that ET-1 plays a key role in the pathogenesis of HIV-associated PAH. However, the direct relationship between ET-1 and hemodynamically assessed mPAP in HIV-infected individuals has not been studied. The purpose of our study was to evaluate the association between plasma levels of ET-1 and HIV-associated PAH diagnosed by right heart catheterization (RHC). We hypothesized that elevated levels of ET-1

would be associated with higher pulmonary artery pressures, and more specifically, PAH, among HIV-infected individuals and would provide additional support for ET-1 mediated endothelial dysfunction as an important mechanism underlying HIV-associated PAH.

Methods

Study Population and Design

We invited HIV-infected participants from the Study of the Consequences of the Protease Inhibitor Era (SCOPE) cohort to undergo Doppler transthoracic echocardiography (TTE) and blood draw for plasma levels of ET-1 and HIV markers using study flyers posted in outpatient clinics. SCOPE is an ongoing, prospective outpatient cohort of greater than 1,500 HIV-infected patients based at San Francisco General Hospital. Documented HIV infection was the only inclusion criterion; we did not use HIV-associated disease characteristics, risk factors for PAH, or symptoms of PAH as selection criteria. There were no exclusion criteria. Non-invasive screening for PAH by TTE (the current standard of practice) was performed on all subjects. Each participant with a PASP ≥ 30 mmHg was offered an invasive RHC to establish a definitive diagnosis of PAH. All study subjects provided written informed consent. The UCSF Committee on Human Research approved this study.

Participant Characteristics

Each participant completed a comprehensive assessment of demographics (age, gender, race/ethnicity), HIV-related factors, and established risk factors for PAH including the use of stimulants (i.e. cocaine and/or amphetamine/methamphetamine use) both intravenously and via non-parenteral routes. A chart review was also performed to assess duration of HIV infection, nadir CD4+ count (lowest documented value prior to study entry), and ART regimen.

Blood Measurements

Fasting venous blood was drawn from each subject. Current CD4+ count, HIV RNA level, and lipid panel were measured at the San Francisco General Hospital clinical laboratory. For plasma levels of ET-1, blood samples were immediately centrifuged at 4°C and subsequently stored at -80°C. ET-1 levels were measured using the QuantiGlo ET-1 Chemiluminescent Immunoassay (R&D Systems, Minneapolis, MN).

Echocardiography

The same experienced sonographer performed all TTEs using a GE Vivid Seven Imaging System (General Electric, Milwaukee, WI). Peak tricuspid regurgitant jet velocity measured by continuous-wave Doppler was used to estimate the pressure gradient between the right ventricle and right atrium via the modified Bernoulli equation.^[26] PASP was subsequently calculated by adding this pressure gradient to the right atrial pressure, which was estimated by the respiratory variation in inferior vena cava diameter.^[27]

Right Heart Catheterization

All participants with a PASP ≥ 30 mmHg on TTE were given the opportunity to undergo RHC. The same experienced Interventional Cardiologist (JSM) performed all RHCs following a standard protocol. A 7 French sheath was first inserted into the internal jugular or femoral vein. Next, a balloon-tipped, flow-directed pulmonary artery catheter (Edwards Biosciences, Irvine, CA) was advanced to the right atrium. The pressure transducer was then zeroed at the level of the left atrium. The catheter was ultimately advanced to the pulmonary artery where

hemodynamic measurements including mPAP, mean pulmonary capillary wedge pressure (PCWP), cardiac output by Fick's principle, and pulmonary vascular resistance (PVR) were recorded. Routine measurement of left ventricular end diastolic pressure was not done.

Definitions and Outcomes

The current accepted definition of pulmonary hypertension is a resting mPAP ≥ 25 mmHg by RHC.[25] PAH (WHO Group 1) is a subgroup of pulmonary hypertension in which the PCWP is ≤ 15 mmHg, the PVR is ≥ 3 Wood units, and other etiologies of pulmonary hypertension including lung disease and chronic thromboembolic disease are absent. Thus, subjects meeting criteria for PAH underwent routine pulmonary function testing, computed tomography of the chest, and ventilation-perfusion imaging to rule out chronic obstructive pulmonary disease, interstitial lung disease, and chronic thromboembolic disease, respectively, to establish a diagnosis of HIV-associated PAH.

We investigated 4 main outcomes: 1) PASP on TTE evaluated as a continuous variable, 2) PASP on TTE evaluated as a dichotomous variable ≥ 30 mmHg, 3) mPAP on RHC evaluated as a continuous variable, and 4) mPAP on RHC evaluated as a dichotomous variable ≥ 25 mmHg with PCWP ≤ 15 mmHg (i.e. PAH).

Statistical Covariates and Analysis

Candidate covariates of elevated pulmonary arterial pressures included ET-1, demographic characteristics, and established risk factors for PAH. For the univariable analyses, we first built generalized linear regression models with log link function to assess the relationship between ET-1 (independent variable) and both PASP on TTE and mPAP on RHC (dependent variables) and calculate percentage differences in both variables. Next, we fit Poisson regression models using PROC GENMOD to estimate prevalence ratios (PR) and examine the association between each covariate and 1) PASP ≥ 30 mmHg, and 2) mPAP ≥ 25 mmHg and PCWP ≤ 15 mmHg. We applied the model-robust sandwich variance estimator to all analyses because when Poisson regression is applied to a binary outcome, the standard error is overestimated, leading to wider confidence intervals.[28–29] For the multivariable models, we applied a penalized regression method (LASSO regression) to select candidate covariates associated with continuous outcome variables, while forcing in demographic covariates.[30] This method allowed for the selection of relevant covariates and the estimation of their regression coefficients in final models. We fit the multivariable Poisson regression models with the covariates selected by LASSO regression. Analyses were performed using the SAS system, version 9.3 (SAS Institute, Inc., Cary, NC) and R package glmnet (version 3.1.2).

Results

Participant Characteristics

We measured levels of ET-1 in 106 HIV-infected participants (Table 1). Overall, the median (interquartile range [IQR]) age was 52 years (IQR 44–57), 80% were men, 9% had current intravenous drug use (IVDU), and 20% were currently using stimulant drugs non-parenterally. The median duration of HIV infection was 16 years (IQR 10–22), 77% were on ART, the median current CD4+ count was 591 cells/ μ L (IQR 366–757), and 69% had an undetectable viral load.

Relationship between ET-1 and PASP on TTE

The overall median level of ET-1 was 1.78 pg/ml (IQR 1.38–2.18). Among the 19 subjects with a PASP < 30 mmHg and 87 subjects with a PASP ≥ 30 mmHg, the median levels of ET-1 were

Table 1. Baseline Characteristics of HIV-Infected Subjects.

Parameter	All Subjects (N = 106)	RHC (N = 65)	Non-RHC (N = 22)	p-value
Age (yr)	52 (44–57)	52 (46–57)	48 (42–57)	0.27
Male	85 (80%)	54 (83%)	14 (64%)	0.03
Race				0.61
Caucasian	53 (50%)	33 (51%)	8 (36%)	
African American	34 (32%)	20 (31%)	10 (45%)	
Latino	11 (10%)	7 (11%)	2 (9%)	
Other	8 (8%)	5 (7%)	2 (9%)	
Stimulant IVDU (ever)	43 (41%)	33 (51%)	6 (27%)	0.06
Stimulant IVDU (current)	10 (9%)	8 (12%)	2 (9%)	0.68
Stimulant Non-Parenteral Use (ever)	63 (59%)	41 (63%)	11 (50%)	0.28
Stimulant Non-Parenteral Use (current)	21 (20%)	17 (26%)	2 (9%)	0.09
Duration of HIV Infection (yr)	16 (10–22)	17 (12–22)	16 (12–21)	0.87
ART Use (ever)	88 (83%)	59 (91%)	19 (86%)	0.56
ART Use (current)	82 (77%)	55 (85%)	18 (82%)	0.76
ART Duration (yr)	4.5 (1.0–9.4)	5.8 (1.8–9.6)	5.9 (1.4–10.1)	0.80
Current CD4+ (cells/ μ L)	591 (366–757)	637 (376–768)	430 (231–672)	0.04
Nadir CD4+ (cells/ μ L)	184 (40–268)	133 (38–250)	172 (43–264)	0.74
HIV RNA (Viral Load)				0.81
<75 (copies/mL)	73 (69%)	49 (75%)	15 (68%)	
75–1999 (copies/mL)	15 (14%)	7 (11%)	2 (9%)	
2000–9999 (copies/mL)	6 (6%)	2 (3%)	1 (5%)	
>10000 (copies/mL)	12 (11%)	7 (11%)	4 (18%)	

ART, antiretroviral therapy; IVDU, intravenous drug use; RHC, right heart catheterization.

Data are presented as median (interquartile range) or numbers (percent).

doi:10.1371/journal.pone.0146355.t001

1.38 pg/ml (IQR 1.19–1.73) and 1.89 pg/ml (IQR 1.48–2.32), respectively. Elevated levels of ET-1 predicted higher values of PASP (14% per 0.1 pg/ml increase in ET-1, $p = 0.05$, [Table 2A](#)) and increased risk of having PASP ≥ 30 mmHg (PR = 1.24 per 0.1 pg/ml increase in ET-1, $p = 0.012$, [Table 2B](#)) in the univariable analysis. These associations remained statistically significant after multivariable adjustment (PASP: 18%, $p = 0.023$, [Table 2A](#); PASP ≥ 30 mmHg: PR = 1.27, $p = 0.013$, [Table 2B](#)). Additionally, stimulant IVDU and female gender were independently associated with increased PASP ([Table 2A](#)), while stimulant IVDU was also independently associated with PASP ≥ 30 mmHg ([Table 2B](#)).

Relationship between ET-1 and PAH on RHC

Of the 87 participants with a PASP ≥ 30 mmHg on TTE, 65 (75%) consented to undergo an elective RHC. This RHC subgroup had a significantly higher percentage of men and current CD4+ counts but similar nadir CD4+ counts and HIV RNA levels compared to the non-RHC cohort ([Table 1](#)). Among the RHC subgroup, 16 (25%) subjects fulfilled the hemodynamic criteria described above to establish a diagnosis of true PAH ([Table 3](#)). Of these 16 individuals with PAH, 4 (25%) were female and all were on ART and asymptomatic. Among the 47 subjects with a mPAP < 25 mmHg, the median level of ET-1 was 1.81 pg/ml (IQR 1.46–2.20). The median level of ET-1 was 2.22 pg/ml (IQR 1.79–2.99) among the 16 subjects with PAH. Higher levels of ET-1 predicted increased values of mPAP (28% per 0.1 pg/ml increase in ET-1, $p = 0.06$, [Table 4A](#)) and higher risk of PAH (PR = 2.35 per 0.1 pg/ml increase in ET-1,

Table 2. Factors Associated with PASP on TTE in HIV-Infected Subjects.

A. PASP		
	Univariable	Multivariable
Parameter	% Estimate (95% CI), p-value	% Estimate (95% CI), p-value
ET-1 (per 0.1 pg/ml increase)	14% (0%, 31%), p = 0.050	18% (2%, 36%), p = 0.023
Age (per decade)	-8% (-16%, 1%), p = 0.090	-8% (-16%, 0%), p = 0.064
Male vs. Female	-18% (-33%, -1%), p = 0.037	-18% (-32%, -1%), p = 0.035
African-American vs. Caucasian	3% (-11%, 18%), p = 0.74	-4% (-17%, 10%), p = 0.51
Latino vs. Caucasian	16% (-16%, 62%), p = 0.37	22% (-9%, 64%), p = 0.18
Other vs. Caucasian	-8% (-21%, 7%), p = 0.28	-3% (-18%, 15%), p = 0.71
Stimulant IVDU (ever vs. never)	21% (5%, 40%), p = 0.009	16% (0%, 34%), p = 0.046
B. PASP ≥ 30 mmHg		
	Univariable	Multivariable
Parameter	PR (95% CI), p-value	PR (95% CI), p-value
ET-1 (per 0.1 pg/ml increase)	1.24 (1.05, 1.48), p = 0.012	1.27 (1.05, 1.52), p = 0.013
Age (per decade)	1.00 (0.97, 1.04), p = 0.804	1.00 (0.97, 1.04), p = 0.989
Male vs. Female	0.84 (0.73, 0.97), p = 0.016	0.87 (0.73, 1.05), p = 0.145
African-American vs. Caucasian	1.18 (0.98, 1.41), p = 0.081	1.13 (0.92, 1.39), p = 0.240
Latino vs. Caucasian	1.06 (0.77, 1.45), p = 0.727	1.08 (0.77, 1.51), p = 0.661
Other vs. Caucasian	1.13 (0.84, 1.53), p = 0.42	1.20 (0.89, 1.61), p = 0.237
Stimulant IVDU (current vs. not current)	1.17 (0.99, 1.38), p < 0.001	1.28 (1.09, 1.51), p = 0.002

CI, confidence interval; ET-1, endothelin-1; IVDU, intravenous drug use; PASP, pulmonary artery systolic pressure; PR, prevalence ratio; TTE, transthoracic echocardiography.

Analysis includes all 106 HIV-infected subjects. PASP is log-transformed; results are back-transformed to calculate estimated percentage differences in PASP attributable to each covariate.

doi:10.1371/journal.pone.0146355.t002

p = 0.033, [Table 4B](#)) in the univariable analysis. These associations remained statistically significant in the multivariable analysis (mPAP: 34%, p = 0.003, [Table 4A](#); PAH: PR = 2.39, p = 0.028, [Table 4B](#)). Among subjects with PAH, current and nadir CD4+ counts showed little association with levels of ET-1 (data not shown). Older age was also independently associated with increased mPAP ([Table 4A](#)).

Discussion

The pathogenesis of PAH in the setting of HIV infection remains poorly understood despite new insights into the mechanistic roles of ADMA and the HIV proteins Nef and Tat.[7–9] A recent study by Feijoo et al. reported that plasma levels of ET-1 increased as the severity of HIV-associated PAH assessed non-invasively on TTE progressed.[24] In the present study, we observed a similar relationship between elevated levels of ET-1 and higher pulmonary artery pressures estimated by TTE. However, we expand upon these findings by demonstrating that, among HIV-infected individuals, elevated levels of ET-1 are independently associated with hemodynamically assessed PAH by invasive RHC (the diagnostic gold standard). This relationship has not been previously described to our knowledge and importantly provides additional evidence that ET-1 contributes to the pathogenesis of HIV-associated PAH ([Fig 1](#)).

Our study and that of Feijoo et al. had several key differences. First, they used a cutoff of PASP ≥ 35 mmHg on TTE to diagnose PAH. While echocardiography is commonly used to screen for elevated PASP, a formal diagnosis of PAH requires direct hemodynamic assessment via RHC. In our study, of the 42 individuals who had a PASP ≥ 35 mmHg on TTE and

Table 3. Hemodynamic Assessment by RHC of HIV-Infected Subjects with PAH.

Participant	mPAP (mmHg)	PCWP (mmHg)	CO (L/min)	PVR (WU)
1	32	5	3.7	7.3
2	25	8	3.6	4.7
3	42	9	5.3	6.2
4	27	12	4.0	3.8
5	46	10	3.9	9.2
6	34	10	4.4	5.5
7	48	5	3.5	12.3
8	30	8	6.4	3.4
9	54	8	5.0	9.2
10	26	12	4.0	3.5
11	25	14	3.6	3.1
12	51	6	6.8	6.6
13	29	10	5.0	3.8
14	32	7	3.1	8.1
15	60	7	4.8	11
16	68	8	3.8	15.8

CO, cardiac output (measured by Fick’s principle); mPAP, mean pulmonary arterial pressure; PAH, pulmonary arterial hypertension; PCWP, pulmonary capillary wedge pressure; PVR, pulmonary vascular resistance; RHC, right heart catheterization; WU, Wood units.

doi:10.1371/journal.pone.0146355.t003

Table 4. Factors Associated with mPAP on RHC in HIV-Infected Subjects.

A. mPAP		
Parameter	Univariable	Multivariable
	% Estimate (95% CI), p-value	% Estimate (95% CI), p-value
ET-1 (per 0.1 pg/ml increase)	28% (-1%, 67%), p = 0.060	34% (11%, 63%), p = 0.003
Age (per decade)	-16% (-28%, -2%), p = 0.031	-17% (-29%, -4%), p = 0.015
Male vs. Female	1% (-15%, 19%), p = 0.946	3% (-15%, 26%), p = 0.733
African-American vs. Caucasian	-10% (-28%, 13%), p = 0.382	-1% (-18%, 20%), p = 0.918
Latino vs. Caucasian	2% (-33%, 55%), p = 0.926	12% (-25%, 68%), p = 0.567
Other vs. Caucasian	-28% (-46%, -5%), p = 0.023	-10% (-26%, 10%), p = 0.326
Stimulant IVDU (ever vs. never)	25% (0%, 56%), p = 0.047	16% (-4%, 40%), p = 0.137
B. PAH (mPAP ≥ 25 mmHg)		
Parameter	Univariable	Multivariable
	PR (95% CI), p-value	PR (95% CI), p-value
ET-1 (per 0.1 pg/ml increase)	2.35 (1.07, 5.13), p = 0.033	2.39 (1.10, 5.20), p = 0.028
Age (per decade)	0.77 (0.49, 1.20), p = 0.246	0.69 (0.41, 1.14), p = 0.145
Male vs. Female	0.88 (0.30, 2.59), p = 0.820	0.96 (0.34, 2.70), p = 0.940
African American vs. Caucasian	0.92 (0.36, 2.35), p = 0.856	1.17 (0.44, 3.11), p = 0.754
Latino/Other vs. Caucasian	0.61 (0.15, 2.43), p = 0.485	1.05 (0.24, 4.56), p = 0.950

CI, confidence interval; ET-1, endothelin-1; IVDU, intravenous drug use; mPAP, mean pulmonary artery pressure; PAH, pulmonary arterial hypertension; PR, prevalence ratio; RHC, right heart catheterization. Analysis includes the subgroup of 65 HIV-infected subjects who underwent RHC. mPAP is log-transformed; results are back-transformed to calculate estimated percentage differences in mPAP attributable to each covariate.

doi:10.1371/journal.pone.0146355.t004

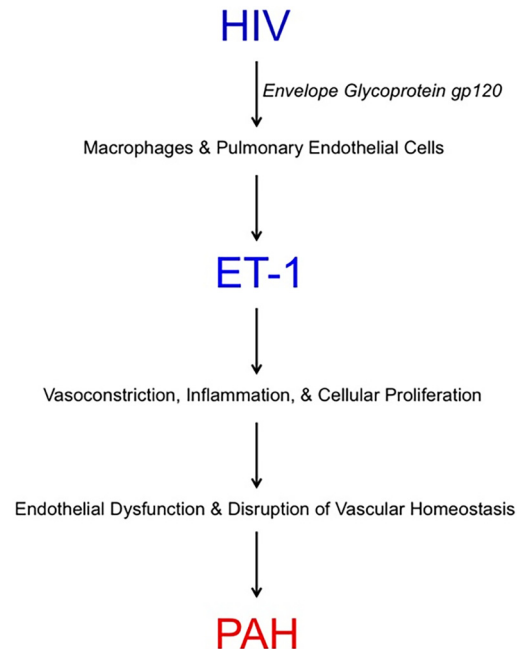


Fig 1. Proposed Mechanism by which ET-1 Contributes to the Development of HIV-Associated PAH. ET-1, endothelin-1; PAH, pulmonary arterial hypertension.

doi:10.1371/journal.pone.0146355.g001

underwent RHC, only 15 had true PAH. Using echocardiography alone to identify PAH as was done in the study by Feijoo et al. would have misclassified 64% of these individuals, highlighting the limitations of echocardiography to establish a diagnosis of PAH. We employed a cutoff of ≥ 30 mmHg to screen subjects for PAH because 1) our group recently found that using the lower threshold resulted in less missed cases of PAH among HIV-infected individuals, and 2) a PASP ≥ 30 mmHg on TTE has been shown to predict mortality in certain patient populations who are at risk for PAH.[31,32] Next, Feijoo et al. reported an overall median level of ET-1 of 1.16 pg/ml (IQR 0.86–2.37) among 23 HIV patients with elevated PASP on TTE. In comparison, the level of ET-1 among 16 subjects diagnosed with HIV-associated PAH on RHC in our study was 2.22 pg/ml (IQR 1.79–2.99), which is significantly higher and likely reflects a greater disease burden. For example, 38% of our PAH cohort had severe PAH as compared to 17% of their cohort. Finally, Feijoo et al. did not report a statistically significant difference in levels of ET-1 between HIV-infected patients with and without elevated PASP on TTE. In contrast, we observed an independent relationship between ET-1 and PASP as both a continuous and dichotomous variable among our HIV cohort. This difference is likely due to a smaller sample size ($n = 68$ vs. $n = 106$) and thus less power to detect an association in the Feijoo et al. study. [24]

HIV-associated PAH carries an exceedingly poor survival rate and independently predicts HIV-specific mortality, rendering it one of the most devastating non-AIDS complications of HIV infection.[1–3] In fact, the survival rate is worse than those in other forms of PAH according to some reports.[1,33] The reported prevalence rate of 0.5% reflects symptomatic patients carrying a clinical diagnosis of HIV-associated PAH but fails to capture the asymptomatic PAH population.[4,5] In our study, 15% of an asymptomatic HIV cohort was found to have subclinical PAH. Thus, earlier recognition of HIV-associated PAH including intervention before development of symptoms may play a role in improvement in clinical outcomes. Our study showed that higher levels of ET-1 are independently associated with HIV-associated

PAH in an asymptomatic and previously undiagnosed cohort. The levels of ET-1 in our HIV-associated PAH cohort [median 2.22 pg/ml (IQR 1.79–2.99)] are substantially higher than those observed in healthy individuals; for example, Feijoo et al. reported a median ET-1 level of 0.71 pg/ml (IQR 0.54–0.94) among 11 controls.[22,34,35] Prior studies of other forms of PAH demonstrated that elevated levels of ET-1 are correlated with worse hemodynamic features and mortality; the ET-1 levels in those series were higher than in our study, reflecting more cases of severe PAH.[13,15–17] Taken together, these findings suggest that ET-1 may be considered as both a screening biomarker and prognostic tool for HIV-associated PAH, though additional longitudinal studies with outcome data would be required for validation.

As a principal mediator of pulmonary vascular homeostasis, ET-1 has long been a chief therapeutic target in PAH in the form of ERAs. Two distinct receptor subtypes mediate the bioactivity of ET-1: 1) ET-A receptors on vascular smooth muscle cells, and 2) ET-B receptors on both endothelial and vascular smooth muscle cells. Stimulation of the vascular smooth muscle cell ET-A and ET-B receptors causes vasoconstriction whereas binding of ET-1 to endothelial ET-B receptors triggers the release of the potent vasodilators NO and prostacyclin.[11] Therefore, selective blockade of ET-A receptors may theoretically lead to greater overall vasodilation compared to non-selectively blocking both ET-A and ET-B receptors. Bosentan, a non-selective ERA, is the only ERA that has been studied in clinical trials focused on HIV-associated PAH. It has been shown to improve both clinical and hemodynamic parameters in patients with advanced disease on ART.[19–21] The ET-A selective ERA Ambrisentan was extensively studied in 3 sequential trials of PAH (overall N = 393, 11 of whom had HIV-associated PAH) and was found to similarly improve pulmonary hemodynamics and delay clinical progression.[36–38] Head-to-head studies of non-selective versus selective blockade of ET-1 receptors are needed to establish the first-line ERA in HIV-associated PAH. Future investigation is also required to determine if ERAs delay the development of PAH or the onset of symptoms in asymptomatic PAH in this population.

Though ET-1 was the only candidate covariate to demonstrate an independent association with all outcomes including PAH, we detected significant associations for both female gender and stimulant IVDU with certain measures of pulmonary pressure. PAH registries report an overall gender influence with a female to male ratio of nearly 4:1 for all etiologies of PAH. However, HIV-associated PAH specifically exhibits a male predominance given that the overwhelming majority of HIV-infected individuals are men.[39,40] We observed that female gender was significantly associated with PASP on TTE, but notably not with PAH by RHC; overall, our findings are consistent with the registry data. Lastly, the significant associations we found between stimulant IVDU and various measures of pulmonary pressure were expected given that it is a known risk factor for PAH.

The present study has key limitations. First, the study's cross-sectional design prevents the determination of causality. Though a mechanistic link exists between HIV infection, ET-1, and PAH (HIV gp120 stimulates macrophages and pulmonary arterial endothelial cells to secrete ET-1), a larger longitudinal study showing that elevated levels of ET-1 predict the development of PAH in HIV-infected patients and are higher than those in uninfected controls would be required to establish a causal relationship and support ET-1 as a potential biomarker of HIV-associated PAH, respectively.[22,23] Nonetheless, our observations are consistent with the results of the recent study by Feijoo et al. and previous observations in cross-sectional studies of other subtypes of PAH, and thus reinforces that ET-1 is one of the mechanisms by which HIV-associated PAH develops.[13,15–17,24] Second, we did not directly measure pulmonary endothelial ET-1 levels. However, ET-1 expression is highest in the pulmonary vasculature and PAH patients have higher circulating plasma levels of ET-1 as well as increased ET-1 levels exiting the lung than entering the lung.[11,41] These observations suggest that the elevated

plasma levels of ET-1 we observed in the HIV-associated PAH cohort likely reflects impaired pulmonary endothelium. Third, the impact of ET-1 compared to other predictors on HIV-associated PAH is unclear. Serial measurement of Nef, Tat, ADMA, and ET-1 levels over time in an HIV population would help shed light on the relative contributions of each of these mechanistic factors. Lastly, the inherent inaccuracy of TTE in measuring pulmonary artery pressure is a fundamental limitation. Doppler echocardiography, when compared to the gold standard of RHC, inaccurately estimates PASP in approximately 50% of the cases in general PAH cohorts (defined as $> \pm 10$ mmHg difference between TTE and RHC).^[42,43] Similarly, our group recently reported that among HIV-infected patients, TTE inaccurately estimated PASP in 20% of the cases and that 29% of diagnoses of HIV-associated PAH were missed using a screening threshold of PASP ≥ 30 mmHg on TTE.^[31] Collectively, these findings suggest that we may have failed to detect cases of PAH in this study among individuals with a PASP < 30 mmHg on TTE and highlights the need for a more sensitive tool than echocardiography to screen for HIV-associated PAH.

In summary, elevated plasma levels of ET-1 are independently associated with PAH diagnosed by RHC in the setting of HIV infection. Our study is the first to our knowledge to link ET-1 to hemodynamically assessed HIV-associated PAH, thus extending upon the existing echocardiographic literature. This finding supports our hypothesis that ET-1 disrupts pulmonary endothelial function and plays a mechanistic role in the development of HIV-associated PAH. Future studies in HIV-infected patients are required to determine sensitive ET-1 thresholds for earlier recognition of PAH and to assess if higher levels of ET-1 predict functional or clinical outcomes. Additionally, the possibility of using ET-1 to predict success of endothelin receptor antagonism in this population warrants further investigation. HIV-infected individuals (Pulido T NEJM 2013). Larger investigations targeted at use of ET-1 levels and lowering ET-1 with ERA in HIV-PAH will be needed to establish the efficacy and safety of the different ERA in HIV. In addition, the benefit of lowering ET-1 among asymptomatic HIV-infected individuals with the purpose of delaying development of PAH or delaying symptom onset remains unknown.

Acknowledgments

This work was presented in part at the American College of Cardiology 64th Annual Scientific Session, March 14–16, 2015, San Diego, CA.

Author Contributions

Conceived and designed the experiments: RVP. Performed the experiments: JSM. Analyzed the data: RVP YM RS ASH JNM SGD PG PYH. Contributed reagents/materials/analysis tools: PYH. Wrote the paper: RVP JNM SGD PG PYH.

References

1. Nunes H, Humbert M, Sitbon O, Morse JH, Deng Z, Knowles JA, et al. Prognostic factors for survival in human immunodeficiency virus-associated pulmonary arterial hypertension. *Am J Respir Crit Care Med*. 2003; 167:1433–1439 PMID: [12615632](#)
2. Opravil M, Pechere M, Speich R, Joller-Jemelka HI, Jenni R, Russi EW, et al. HIV-associated primary pulmonary hypertension. A case control study. Swiss HIV cohort study. *American Journal of Respiratory and Critical Care Medicine*. 1997; 155:990–995 PMID: [9117037](#)
3. Opravil M, Sereni D. Natural history of HIV-associated pulmonary arterial hypertension: Trends in the haart era. *AIDS*. 2008; 22:S35–S40 doi: [10.1097/1001.aids.0000327514.0000360879.0000327547](#)
4. Sitbon O, Lascoux-Combe C, Delfraissy J-Fo, Yeni PG, Raffi Fo, De Zuttere D, et al. Prevalence of HIV-related pulmonary arterial hypertension in the current antiretroviral therapy era. *American Journal of Respiratory and Critical Care Medicine*. 2008; 177:108–113 PMID: [17932378](#)

5. Degano B, Guillaume M, Savale L, Montani D, Jais X, Yaici A, et al. HIV-associated pulmonary arterial hypertension: Survival and prognostic factors in the modern therapeutic era. *Aids*. 2010; 24:67–75 doi: [10.1097/QAD.0b013e328331c65e](https://doi.org/10.1097/QAD.0b013e328331c65e) PMID: [19770696](https://pubmed.ncbi.nlm.nih.gov/19770696/)
6. Hsue PY, Deeks SG, Farah HH, Palav S, Ahmed SY, Schnell A, et al. Role of HIV and human herpesvirus-8 infection in pulmonary arterial hypertension. *AIDS*. 2008; 22:825–833 810.1097/QAD.1090-b1013e3282f1097cd1042 doi: [10.1097/QAD.0b013e3282f7cd42](https://doi.org/10.1097/QAD.0b013e3282f7cd42) PMID: [18427200](https://pubmed.ncbi.nlm.nih.gov/18427200/)
7. Almodovar S, Hsue PY, Morelli J, Huang L, Flores SC. Pathogenesis of HIV-associated pulmonary hypertension. *Proceedings of the American Thoracic Society*. 2011; 8:308–312 doi: [10.1513/pats.201006-046WR](https://doi.org/10.1513/pats.201006-046WR) PMID: [21653533](https://pubmed.ncbi.nlm.nih.gov/21653533/)
8. Almodovar S, Knight R, Allshouse AA, Roemer S, Lozupone C, McDonald D, et al. Human immunodeficiency virus nef signature sequences are associated with pulmonary hypertension. *AIDS Res Hum Retroviruses*. 2012; 28:607–618 doi: [10.1089/AID.2011.0021](https://doi.org/10.1089/AID.2011.0021) PMID: [22066947](https://pubmed.ncbi.nlm.nih.gov/22066947/)
9. Parikh RV, Scherzer R, Nitta EM, Leone A, Hur S, Mistry V, et al. Increased levels of asymmetric dimethylarginine are associated with pulmonary arterial hypertension in HIV infection. *AIDS*. 2014; 28:511–519 doi: [10.1097/QAD.000000000000124](https://doi.org/10.1097/QAD.000000000000124) PMID: [24469026](https://pubmed.ncbi.nlm.nih.gov/24469026/)
10. Parikh RV, Scherzer R, Grunfeld C, Nitta EM, Leone A, Martin JN, et al. Elevated levels of asymmetric dimethylarginine are associated with lower CD4+ count and higher viral load in HIV-infected individuals. *Atherosclerosis*. 2013; 229:246–252 doi: [10.1016/j.atherosclerosis.2013.04.025](https://doi.org/10.1016/j.atherosclerosis.2013.04.025) PMID: [23711612](https://pubmed.ncbi.nlm.nih.gov/23711612/)
11. Bohm F, Pernow J. The importance of endothelin-1 for vascular dysfunction in cardiovascular disease. *Cardiovasc Res*. 2007; 76:8–18 PMID: [17617392](https://pubmed.ncbi.nlm.nih.gov/17617392/)
12. Channick RN, Sitbon O, Barst RJ, Manes A, Rubin LJ. Endothelin receptor antagonists in pulmonary arterial hypertension. *J Am Coll Cardiol*. 2004; 43:62S–67S PMID: [15194180](https://pubmed.ncbi.nlm.nih.gov/15194180/)
13. Shao D, Park JES, Wort SJ. The role of endothelin-1 in the pathogenesis of pulmonary arterial hypertension. *Pharmacological Research*. 2011; 63:504–511 doi: [10.1016/j.phrs.2011.03.003](https://doi.org/10.1016/j.phrs.2011.03.003) PMID: [21419223](https://pubmed.ncbi.nlm.nih.gov/21419223/)
14. Channick RN, Simonneau G, Sitbon O, Robbins IM, Frost A, Tapson VF, et al. Effects of the dual endothelin-receptor antagonist bosentan in patients with pulmonary hypertension: A randomised placebo-controlled study. *Lancet*. 2001; 358:1119–1123 PMID: [11597664](https://pubmed.ncbi.nlm.nih.gov/11597664/)
15. Nootens M, Kaufmann E, Rector T, Toher C, Judd D, Francis GS, et al. Neurohormonal activation in patients with right ventricular failure from pulmonary hypertension: Relation to hemodynamic variables and endothelin levels. *Journal of the American College of Cardiology*. 1995; 26:1581–1585 PMID: [7594089](https://pubmed.ncbi.nlm.nih.gov/7594089/)
16. Rubens C, Ewert R, Halank M, Wensel R, Orzechowski HD, Schultheiss HP, et al. Big endothelin-1 and endothelin-1 plasma levels are correlated with the severity of primary pulmonary hypertension. *Chest*. 2001; 120:1562–1569 PMID: [11713135](https://pubmed.ncbi.nlm.nih.gov/11713135/)
17. Yoshibayashi M, Nishioka K, Nakao K, Saito Y, Matsumura M, Ueda T, et al. Plasma endothelin concentrations in patients with pulmonary hypertension associated with congenital heart defects. Evidence for increased production of endothelin in pulmonary circulation. *Circulation*. 1991; 84:2280–2285 PMID: [1959183](https://pubmed.ncbi.nlm.nih.gov/1959183/)
18. Rubin LJ, Badesch DB, Barst RJ, Galie N, Black CM, Keogh A, et al. Bosentan therapy for pulmonary arterial hypertension. *N Engl J Med*. 2002; 346:896–903 PMID: [11907289](https://pubmed.ncbi.nlm.nih.gov/11907289/)
19. Sitbon O, Gressin V, Speich R, Macdonald PS, Opravil M, Cooper DA, et al. Bosentan for the treatment of human immunodeficiency virus-associated pulmonary arterial hypertension. *Am J Respir Crit Care Med*. 2004; 170:1212–1217 PMID: [15317666](https://pubmed.ncbi.nlm.nih.gov/15317666/)
20. Degano B, Yaici A, Le Pavec J, Savale L, Jais X, Camara B, et al. Long-term effects of bosentan in patients with HIV-associated pulmonary arterial hypertension. *Eur Respir J*. 2009; 33:92–98 doi: [10.1183/09031936.00094808](https://doi.org/10.1183/09031936.00094808) PMID: [18799506](https://pubmed.ncbi.nlm.nih.gov/18799506/)
21. Barbaro G, Lucchini A, Pellicelli AM, Grisorio B, Giancaspro G, Barbarini G. Highly active antiretroviral therapy compared with haart and bosentan in combination in patients with HIV-associated pulmonary hypertension. *Heart*. 2006; 92:1164–1166 PMID: [16844879](https://pubmed.ncbi.nlm.nih.gov/16844879/)
22. Ehrenreich H, Rieckmann P, Sinowatz F, Weih KA, Arthur LO, Goebel FD, et al. Potent stimulation of monocyte endothelin-1 production by HIV-1 glycoprotein 120. *J Immunol*. 1993; 150:4601–4609 PMID: [8482849](https://pubmed.ncbi.nlm.nih.gov/8482849/)
23. Kanmogne GD, Primeaux C, Grammas P. Induction of apoptosis and endothelin-1 secretion in primary human lung endothelial cells by HIV-1 gp120 proteins. *Biochem Biophys Res Commun*. 2005; 333:1107–1115 PMID: [15979050](https://pubmed.ncbi.nlm.nih.gov/15979050/)
24. Feijoo MQ, Toro R, Lopez Vazquez de la Torre M, Lennie V, Arce C, Moreno V, et al. Relationship between endothelin-1 levels and pulmonary arterial hypertension in HIV-infected patients. *AIDS*. 2014; 28:2693–2699 doi: [10.1097/QAD.0000000000000470](https://doi.org/10.1097/QAD.0000000000000470) PMID: [25493595](https://pubmed.ncbi.nlm.nih.gov/25493595/)

25. Badesch DB, Champion HC, Sanchez MA, Hooper MM, Loyd JE, Manes A, et al. Diagnosis and assessment of pulmonary arterial hypertension. *J Am Coll Cardiol*. 2009; 54:S55–66 doi: [10.1016/j.jacc.2009.04.011](https://doi.org/10.1016/j.jacc.2009.04.011) PMID: [19555859](https://pubmed.ncbi.nlm.nih.gov/19555859/)
26. Berger M, Haimowitz A, Van Tosh A, Berdoff RL, Goldberg E. Quantitative assessment of pulmonary hypertension in patients with tricuspid regurgitation using continuous wave doppler ultrasound. *Journal of the American College of Cardiology*. 1985; 6:359–365 PMID: [4019921](https://pubmed.ncbi.nlm.nih.gov/4019921/)
27. Kircher BJ, Himelman RB, Schiller NB. Noninvasive estimation of right atrial pressure from the inspiratory collapse of the inferior vena cava. *The American journal of cardiology*. 1990; 66:493–496 PMID: [2386120](https://pubmed.ncbi.nlm.nih.gov/2386120/)
28. Zou G. A Modified Poisson Regression Approach to Prospective Studies with Binary Data. *American Journal of Epidemiology*. 2004; 159(7): 702–706. PMID: [15033648](https://pubmed.ncbi.nlm.nih.gov/15033648/)
29. Lumley T, Kronmal R, Ma S. Relative Risk Regression in Medical Research: Models, Contrasts, Estimators, and Algorithms. *UW Biostatistics Working Paper Series*. 2006; Working Paper 293. Available at: <http://biostats.bepress.com/uwbiostat/paper293>.
30. Tibshirani R. Regression shrinkage and selection via the lasso. *Journal of the Royal Statistical Society. Series B. Methodological*. 1996; 58(1): 267–288.
31. Selby VN, Scherzer R, Barnett CF, MacGregor JS, Morelli J, Donovan C, et al. Doppler echocardiography does not accurately estimate pulmonary artery systolic pressure in HIV-infected patients. *AIDS*. 2012; 26:1967–1969 PMID: [22781217](https://pubmed.ncbi.nlm.nih.gov/22781217/)
32. Gladwin MT, Sachdev V, Jison ML, Shizukuda Y, Plehn JF, Minter K, et al. Pulmonary hypertension as a risk factor for death in patients with sickle cell disease. *New England Journal of Medicine*. 2004; 350:886–895 PMID: [14985486](https://pubmed.ncbi.nlm.nih.gov/14985486/)
33. McLaughlin VV, Archer SL, Badesch DB, Barst RJ, Farber HW, Lindner JR, et al. ACC/AHA 2009 expert consensus document on pulmonary hypertension a report of the American College of Cardiology foundation task force on expert consensus documents and the American Heart Association developed in collaboration with the American College of Chest Physicians; American Thoracic Society, inc.; and the Pulmonary Hypertension Association. *J Am Coll Cardiol*. 2009; 53:1573–1619 doi: [10.1016/j.jacc.2009.01.004](https://doi.org/10.1016/j.jacc.2009.01.004) PMID: [19389575](https://pubmed.ncbi.nlm.nih.gov/19389575/)
34. Leyva F, Wingrove C, Felton C, Stevenson JC. Physiological hyperinsulinemia is not associated with alterations in venous plasma levels of endothelin-1 in healthy individuals. *Metabolism*. 1997; 46(10): 1137–1139. PMID: [9322795](https://pubmed.ncbi.nlm.nih.gov/9322795/)
35. Iglesias D, Gomez Rosso L, Vainstein N, Merono T, Lezon C, et al. Vascular reactivity and biomarkers of endothelial function in healthy subjects exposed to acute hypobaric hypoxia. *Clin Biochem*. 2015. doi: [10.1016/j.clinbiochem.2015.06.007](https://doi.org/10.1016/j.clinbiochem.2015.06.007)
36. Oudiz RJ, Galie N, Olschewski H, Torres F, Frost A, Ghofrani HA, et al. Long-term ambrisentan therapy for the treatment of pulmonary arterial hypertension. *J Am Coll Cardiol*. 2009; 54:1971–1981 doi: [10.1016/j.jacc.2009.07.033](https://doi.org/10.1016/j.jacc.2009.07.033) PMID: [19909879](https://pubmed.ncbi.nlm.nih.gov/19909879/)
37. Galie N, Badesch D, Oudiz R, Simonneau G, McGoon MD, Keogh AM, et al. Ambrisentan therapy for pulmonary arterial hypertension. *J Am Coll Cardiol*. 2005; 46:529–535 PMID: [16053970](https://pubmed.ncbi.nlm.nih.gov/16053970/)
38. Galie N, Olschewski H, Oudiz RJ, Torres F, Frost A, Ghofrani HA, et al. Ambrisentan for the treatment of pulmonary arterial hypertension: Results of the ambrisentan in pulmonary arterial hypertension, randomized, double-blind, placebo-controlled, multicenter, efficacy (aries) study 1 and 2. *Circulation*. 2008; 117:3010–3019 doi: [10.1161/CIRCULATIONAHA.107.742510](https://doi.org/10.1161/CIRCULATIONAHA.107.742510) PMID: [18506008](https://pubmed.ncbi.nlm.nih.gov/18506008/)
39. Thenappan T, Shah SJ, Rich S, Gomberg-Maitland M. A USA-based registry for pulmonary arterial hypertension: 1982–2006. *European Respiratory Journal*. 2007; 30: 1103–1110. PMID: [17804449](https://pubmed.ncbi.nlm.nih.gov/17804449/)
40. Shapiro S, Traiger GL, Turner M, McGoon MD, Wason P, et al. Sex differences in the diagnosis, treatment, and outcome of patients with pulmonary arterial hypertension enrolled in the registry to evaluate early and long-term pulmonary arterial hypertension disease management. *Chest*. 2012; 141: 363–373. doi: [10.1378/chest.10-3114](https://doi.org/10.1378/chest.10-3114) PMID: [21757572](https://pubmed.ncbi.nlm.nih.gov/21757572/)
41. Chester AH, Yacoub MH. The role of endothelin-1 in pulmonary arterial hypertension. *Glob Cardiol Sci Pract*. 2014; 62–78. doi: [10.5339/gcsp.2014.29](https://doi.org/10.5339/gcsp.2014.29) PMID: [25405182](https://pubmed.ncbi.nlm.nih.gov/25405182/)
42. Fisher MR, Forfia PR, Chamera E, Houston-Harris T, Champion HC, Girgis RE, et al. Accuracy of doppler echocardiography in the hemodynamic assessment of pulmonary hypertension. *Am J Respir Crit Care Med*. 2009; 179:615–621 doi: [10.1164/rccm.200811-1691OC](https://doi.org/10.1164/rccm.200811-1691OC) PMID: [19164700](https://pubmed.ncbi.nlm.nih.gov/19164700/)
43. Rich JD, Shah SJ, Swamy RS, Kamp A, Rich S. Inaccuracy of doppler echocardiographic estimates of pulmonary artery pressures in patients with pulmonary hypertension: Implications for clinical practice. *Chest*. 2011; 139:988–993 doi: [10.1378/chest.10-1269](https://doi.org/10.1378/chest.10-1269) PMID: [20864617](https://pubmed.ncbi.nlm.nih.gov/20864617/)