

UCSF

UC San Francisco Previously Published Works

Title

SULF2 expression by immunohistochemistry and overall survival in oesophageal cancer: a cohort study

Permalink

<https://escholarship.org/uc/item/8z94f5db>

Journal

BMJ Open, 2(6)

ISSN

2044-6055

Authors

Lui, Natalie Shaubie
van Zante, Annemieke
Rosen, Steven D
[et al.](#)

Publication Date

2012

DOI

10.1136/bmjopen-2012-001624

Copyright Information

This work is made available under the terms of a Creative Commons Attribution-NonCommercial License, available at <https://creativecommons.org/licenses/by-nc/4.0/>

Peer reviewed

SULF2 expression by immunohistochemistry and overall survival in oesophageal cancer: a cohort study

Natalie Shaubie Lui,¹ Annemieke van Zante,² Steven D Rosen,³ David M Jablons,¹ Hassan Lemjabbar-Alaoui¹

To cite: Lui NS, van Zante A, Rosen SD, *et al.* SULF2 expression by immunohistochemistry and overall survival in oesophageal cancer: a cohort study. *BMJ Open* 2012;**2**:e001624. doi:10.1136/bmjopen-2012-001624

► Prepublication history for this paper are available online. To view these files please visit the journal online (<http://dx.doi.org/10.1136/bmjopen-2012-001624>).

Received 9 June 2012
Accepted 5 October 2012

This final article is available for use under the terms of the Creative Commons Attribution Non-Commercial 2.0 Licence; see <http://bmjopen.bmj.com>

¹Thoracic Oncology Laboratory, Department of Surgery, University of California San Francisco, San Francisco, California, USA

²Department of Pathology, University of California San Francisco, San Francisco, California, USA

³Department of Anatomy, University of California San Francisco, San Francisco, California, USA

Correspondence to

Dr Hassan Lemjabbar-Alaoui; hassan.lemjabbar-alaoui@ucsf.edu

ABSTRACT

Objectives: Oesophageal cancer is the eighth most commonly diagnosed cancer worldwide, and there is a need for biomarkers to improve diagnosis, prognosis and treatment. Sulfatases 2 (SULF2) is an extracellular endosulphatase that regulates several signalling pathways in carcinogenesis and has been associated with poor prognosis. This study evaluates the relationship between SULF2 expression by immunohistochemistry and overall survival in patients with oesophageal cancer.

Design: Cohort study.

Setting: Single tertiary care centre.

Participants: We included patients who underwent esophagectomy for invasive oesophageal adenocarcinoma and squamous cell carcinoma at a tertiary care centre from 1997 to 2006. We excluded patients with recurrent oesophageal cancer or less than 3 mm invasive tumour on H&E stained slide. A section from each paraffin-embedded tissue specimen was stained with an anti-SULF2 monoclonal antibody.

Outcome measures: A pathologist blinded to overall survival determined the percentage and intensity of tumour cells staining. Vital status was obtained through the Social Security Death Master File, and overall survival was calculated from the date of surgery.

Results: One-hundred patients with invasive oesophageal cancer were identified, including 75 patients with adenocarcinoma and 25 patients with squamous cell carcinoma. The squamous cell carcinoma samples had a higher mean percentage and intensity of tumour cells staining compared with the adenocarcinoma samples. After adjusting for age, sex, race, histological type, stage and neoadjuvant therapy, for every 10% increase in percentage of tumour cells staining for SULF2, the HR for death increased by 13% (95% CI 1.01 to 1.25; $p=0.03$).

Conclusions: The majority of adenocarcinoma samples and all of the squamous cell carcinoma samples had SULF2 staining. The percentage of tumour cells staining for SULF2 was significantly associated with overall survival. Thus, SULF2 is a potential biomarker in oesophageal cancer and may have an important role in the management of patients with this disease.

ARTICLE SUMMARY

Article focus

- Oesophageal cancer is the eighth most commonly diagnosed cancer and sixth most common cause of cancer death worldwide. There is a desperate need for biomarkers to improve diagnosis, prognosis and treatment of this disease.
- Sulphatase (SULF2) is an extracellular endosulphatase that regulates several signalling pathways in carcinogenesis and has been associated with poor prognosis in several types of cancer.
- This study evaluates the relationship between SULF2 expression by immunohistochemistry and overall survival in 100 patients with oesophageal cancer.

Key messages

- We show for the first time SULF2 staining in oesophageal cancer, including the majority of adenocarcinoma samples and all of the squamous cell carcinoma samples.
- The percentage of tumour cells staining for SULF2 is significantly associated with overall survival in multivariate analysis.
- SULF2 is a potential biomarker in oesophageal cancer and may have an important role in the management of patients with this disease.

INTRODUCTION

Oesophageal cancer is the eighth most commonly diagnosed cancer and the sixth most common cause of cancer death worldwide.¹ There are two main histological types, each with distinct risk factors, geographic patterns and temporal trends. Oesophageal adenocarcinoma is associated with gastro-oesophageal reflux disease, obesity and the precursor lesion Barrett's oesophagus; its incidence has increased faster than that of any other cancer in the USA in the past few decades.² Oesophageal squamous cell carcinoma is associated with tobacco smoking, alcohol

ARTICLE SUMMARY

Strengths and limitations of this study

- A major strength of this study is the use of tumour samples from a large, carefully selected cohort of patients with oesophageal cancer.
- Another major strength of the study is the novelty of SULF2, which may be a hub in the network of signalling pathways critical for cancer development and progression.
- A limitation of this study is the lack of functional data that confirm causality of SULF2 in oesophageal cancer cell lines. However, the significant association between increased SULF2 expression and worse overall survival in patients with oesophageal cancer justifies investigation into the role of SULF2 in oesophageal cancer cells, beyond the scope of the present study.
- Another limitation of this study is the variability of SULF2 staining across samples. While SULF2 expression by immunohistochemistry is detected in the majority of the oesophageal tumours, it is possible that SULF2 will be most useful as a biomarker in a subset of patients with oesophageal cancer.

consumption and poor nutrition; its incidence remains much higher than that of oesophageal adenocarcinoma in most of the world.³ Patients with oesophageal cancer continue to have a poor prognosis, with 5-year overall survival still less than 15%.⁴ A greater understanding of the molecular basis of oesophageal cancer, including the development of new biomarkers, is greatly needed to improve the diagnosis, prognosis and treatment of patients with this disease.

Heparan sulphate proteoglycans (HSPGs) consist of core proteins that are modified by the covalent addition of heparan or chondroitin sulphate chains.⁵ These chains are composed of repeating disaccharide units, which are variably sulphated at four different positions. HSPGs perform enumerable signalling functions, using their sulphated chains to bind diverse protein ligands, such as growth factors, morphogens and cytokines. These interactions depend on the pattern of the sulphation modifications with the 6-*O*-sulphation of glucosamine (6OS) known to be a key for binding many ligands.⁶ Two recently discovered sulphatases (SULF1 and SULF2) provide a novel mechanism for the regulation of HSPG-dependent signalling by acting on 6OS on the outside of cells. Work by us and others has shown that SULFs are neutral pH, extracellular enzymes which remove 6OS from intact HSPGs; they promote key signalling pathways by mobilising protein ligands (eg, Wnt ligands, GDNF and BMP-4) from HSPG sequestration, thus liberating the ligands for binding to signal transduction receptors.^{7–10}

One or both SULFs are broadly overexpressed at the transcript level in many human cancers, including non-small cell lung cancer, hepatocellular carcinoma, breast cancer, head and neck cancer, pancreatic adenocarcinoma, multiple myeloma, gastric carcinoma and glioblastomas.^{11–12} SULF2 has been directly implicated as a

driver of carcinogenesis in pancreatic cancer¹³, murine and human glioblastoma¹⁴, hepatocellular carcinoma¹⁵ and non-small cell lung cancer¹⁶. Moreover, *SULF2* promoter methylation and expression has been associated with overall survival in lung cancer and hepatocellular carcinoma, respectively.^{15–17} However, there are no reports on SULF2 expression in oesophageal cancer. This study evaluated SULF2 expression by immunohistochemistry and its association with overall survival in a cohort of patients with oesophageal cancer.

METHODS**Patients**

We identified patients who underwent esophagectomy at the University of California, San Francisco (UCSF) during the 10-year period from 1997 to 2006. We included patients undergoing primary resection for invasive oesophageal adenocarcinoma and squamous cell carcinoma. Patients undergoing salvage surgery for recurrent oesophageal cancer were excluded. We evaluated cases with at least 3 mm of invasive carcinoma on histological sections and for which corresponding paraffin blocks were available. Clinical data were obtained through review of electronic medical records. Histological data were obtained through review of pathology reports and confirmed by review of H&E-stained sections by a pathologist. Pathological stage was determined by the seventh edition of the American Joint Committee on Cancer staging system.¹⁸ Vital status was obtained through the Social Security Death Master File. Overall survival was calculated from the date of surgery. The UCSF institutional review board approved this study.

Immunohistochemistry

A 5 µm section from each paraffin-embedded tissue specimen was stained with a mouse monoclonal antibody to SULF2 (AbD Serotec MCA5692T or Novus Biologicals NBP1-36727)¹⁶ at a concentration of 2 µg/ml with avidin-biotin blocking. A pathologist blinded to patient outcome determined the percentage and intensity of tumour cells staining. The percentage of tumour cells staining was scored from 0% to 100%. The pathologist evaluated all of the tumour cells on each slide, so the number of cells evaluated per slide depended on the size of the tumour and varied widely. The intensity of tumour cells staining was assessed at 100× magnification and scored from 0 to 3. A score of 0 represented no staining; 1, weak staining; 2, moderate staining and 3, strong staining. When specimens showed a range of intensity, the mean intensity was recorded. The presence of endothelial cell staining was assessed for each slide and functioned as an internal positive control. Staining of tumour-associated stroma was also noted.

Statistical analysis

Patient baseline characteristics and immunohistochemistry scores were summarised and compared by

histological type, using the Student's *t* test for continuous variables and the χ^2 test for categorical variables. Survival analysis was performed using univariate and multivariate Cox proportional hazards models. Age, sex and race were included in the multivariate model a priori. Histological type, stage, grade, neoadjuvant therapy and year of operation were included in the multivariate analysis only if the *p* value was less than 0.10 in the univariate analysis. We repeated our analyses in prespecified subgroups by histological type (adenocarcinoma and squamous cell carcinoma) and neoadjuvant therapy (yes and no). In order to account for the possible misdiagnosis of gastric adenocarcinoma arising at the gastro-oesophageal junction as oesophageal adenocarcinoma, we also repeated our analyses in the subgroup of patients with adenocarcinoma, excluding those with tumours located at the gastro-oesophageal junction and not associated with Barrett's oesophagus. For all statistical tests, a two-sided α -level of 0.05 was considered statistically significant. Analyses were performed using Stata V.11.

RESULTS

Patients

We identified 233 patients who underwent esophagectomy at UCSF during the 10-year period from 1997 to 2006 (figure 1). Of these, 100 patients met our inclusion criteria, including 75 patients with adenocarcinoma and 25 patients with squamous cell carcinoma.

There were several differences in baseline characteristics between patients with adenocarcinoma and those with squamous cell carcinoma (table 1). Patients with adenocarcinoma had a higher proportion of men (82% vs 52%;

$p < 0.0005$). Adenocarcinomas were more often located at the gastro-oesophageal junction and associated with Barrett's oesophagus. Patients with adenocarcinoma had a higher frequency of neoadjuvant therapy and were generally diagnosed and resected at an earlier pathological stage. There was no difference in age, race or ethnicity between histological types.

Immunohistochemistry

SULF2 staining was detected on 93/100 of the specimens, including 68/75 (91%) adenocarcinoma samples and 25/25 (100%) squamous cell carcinoma samples (figure 2). All samples had endothelial cell staining, which served as an internal positive control.

The squamous cell carcinoma samples had a higher mean percentage (49% vs 36%; $p = 0.06$) and intensity (1.9 vs 1.4; $p = 0.0007$) of tumour cells staining compared to the adenocarcinoma samples. Samples from patients who underwent neoadjuvant therapy had a lower mean intensity of tumour cells staining (1.3 vs 1.6; $p = 0.03$), but this difference was not evident when patients were stratified by histological type. Neither percentage nor intensity of tumour cells staining was significantly associated with the other clinical and pathological variables, including stage and grade.

SULF2 staining was present in some adjacent tissues. Among the 75 adenocarcinoma samples, incidental adjacent tissue included squamous epithelium (33), gastric epithelium (24) and Barrett's oesophagus (20). Seventeen (52%) of the samples of adjacent benign squamous epithelium showed SULF2 staining of this epithelium. Staining was generally focal in the basal layer with weak-to-moderate intensity. Seven (29%) of the samples

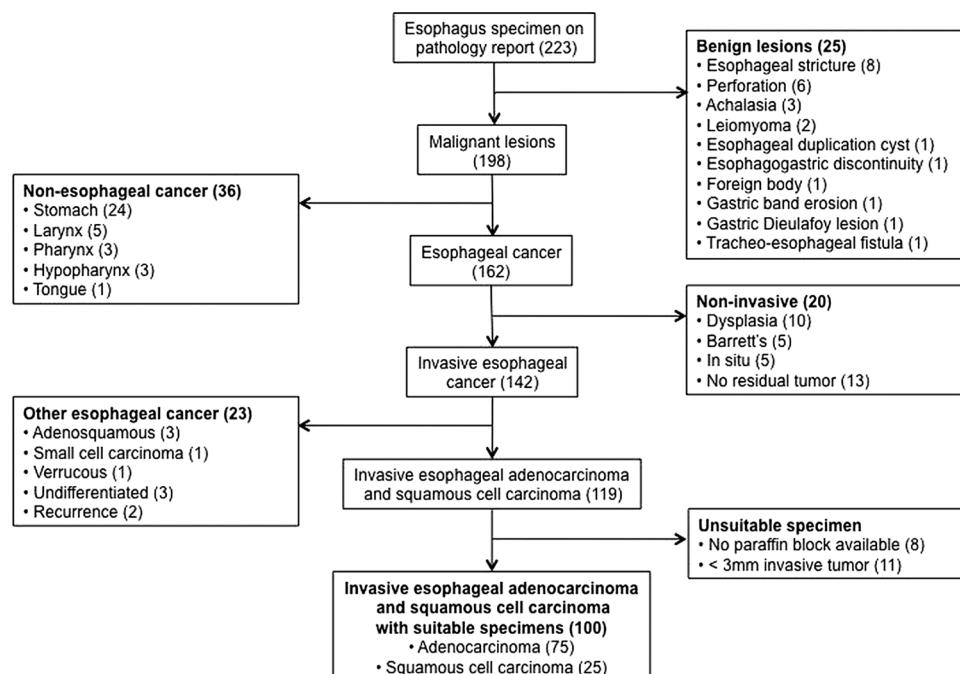


Figure 1 Patient selection by review of 223 patients who underwent oesophagectomy from 1997 to 2006.

Table 1 Patient baseline characteristics

	All patients (N=100)	Patients with AC (N=75)	Patients with SCC (N=25)	p Value*
Age, mean±SD—years	64.2±11.6	63.9±11.0	65.2±13.5	0.63
Sex—no. (%)				<0.0005
Female	21 (21)	9 (12)	12 (48)	
Male	79 (79)	66 (88)	13 (52)	
Race—no. (%)				0.13
White	80 (80)	62 (84)	18 (72)	
Asian	4 (4)	1 (1)	3 (12)	
Black	3 (3)	2 (3)	1 (4)	
Missing	13 (13)	10 (13)	3 (12)	
Ethnicity—no. (%)				0.48
Non-Hispanic	90 (90)	66 (88)	24 (96)	
Hispanic	2 (2)	2 (3)	0	
Missing	8 (8)	7 (9)	1 (4)	
Location of tumour†—no. (%)				<0.0005
Upper oesophagus	5 (5)	0	5 (20)	
Middle oesophagus	9 (9)	2 (3)	7 (28)	
Lower oesophagus	31 (31)	20 (27)	11 (44)	
Gastro-oesophageal junction	55 (55)	53 (71)	2 (8)	
Presence of Barrett's oesophagus—no. (%)				<0.0005
Yes	46 (46)	46 (61)	0	
No	54 (54)	29 (39)	25 (100)	
Pathological stage—no. (%)				0.06
I	30 (30)	27 (36)	3 (12)	
II	31 (31)	23 (31)	8 (32)	
III	37 (37)	23 (31)	14 (56)	
IV	2 (2)	2 (3)	0	
Histological grade—no. (%)				0.10
1 (Well-differentiated)	11	11	0	
2 (Moderately differentiated)	41	30	11	
3 (Poorly differentiated)	44	30	14	
4 (Undifferentiated)	4	4	0	
Neoadjuvant therapy				0.04
Yes	28 (28)	25 (33)	3 (12)	
No	72 (72)	50 (67)	22 (88)	

*p Values were calculated using the t test for continuous variables and the χ^2 test for categorical variables.

†Location of tumour was recorded as the most superior location of the tumour in the oesophagus. For example, if the pathology report noted tumour at the upper and middle oesophagus, the location was recorded as upper oesophagus.
AC, adenocarcinoma; SCC, squamous cell carcinoma.

of adjacent benign gastric epithelium showed SULF2 staining of this epithelium, mostly patchy in the basal layer with weak-to-moderate intensity. Fifteen (75%) of the samples of Barrett's oesophagus showed SULF2 staining of this metaplastic epithelium, mostly patchy with weak-to-moderate intensity (figure 3).

Among the 25 squamous cell carcinoma cases, incidental adjacent tissue included benign squamous epithelium (6), dysplastic squamous epithelium (4) and carcinoma in situ (5). Three (50%) of the samples of adjacent benign squamous epithelium had SULF2 staining, mostly in the basal to middle layers with weak-to-moderate intensity. One (25%) of the samples of dysplastic squamous mucosa demonstrated SULF2 staining. Interestingly, the area with low-grade dysplasia had weak intensity, and the area with high-grade dysplasia had moderate intensity. All 5 (100%) of the samples

of carcinoma in situ had SULF2 staining, mostly in the basal layer with moderate intensity.

Survival analysis

Median follow-up time was 53.6 months (IQR, 15–97.6 months). Fifty-five patients died, including 38/75 (51%) patients with adenocarcinoma and 17/25 (68%) patients with squamous cell carcinoma.

In the univariate Cox proportional hazards models, pathological stage, neoadjuvant therapy and histological type were significantly associated with overall survival; these were included in the multivariate model. Year of surgery and histological grade were not significantly associated with survival; these were not included in the multivariate model. For every 10% increase in the percentage of tumour cells staining for SULF2, the risk of death increased by 4%, but this effect was not significant

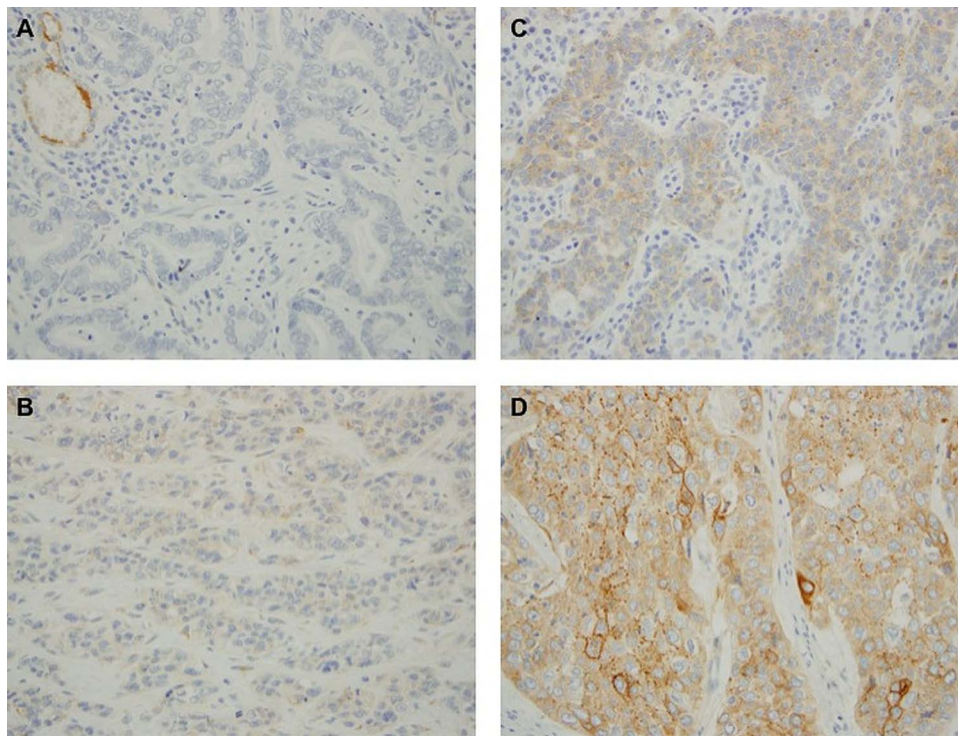


Figure 2 Representative sections from adenocarcinoma samples with no staining (A), weak staining (B) and moderate staining (C) and a squamous cell carcinoma sample with strong staining (D). Endothelial cell staining served as an internal positive control, as seen in the upper left corner of (A).

($p=0.42$). Unadjusted Kaplan-Meier survival estimates confirmed these results (figure 4).

In the multivariate Cox proportional hazards model, histological type was no longer associated with overall survival (table 2). Higher stage was still associated with worse survival ($p=0.001$), and patients who underwent neoadjuvant therapy still had a higher risk of death compared to those who did not ($p=0.003$). The percentage of tumour cells staining was significantly associated with overall survival. After adjusting for age, sex, race,

histological type, stage and neoadjuvant therapy, for every 10% increase in percentage of tumour cells staining for SULF2, the risk of death increased by 13% ($p=0.03$).

Only percentage, not intensity, of tumour cells staining was significantly associated with overall survival. Subgroup analysis by histological type and neoadjuvant therapy did not show significant associations between percentage or intensity of tumour cells staining and survival.

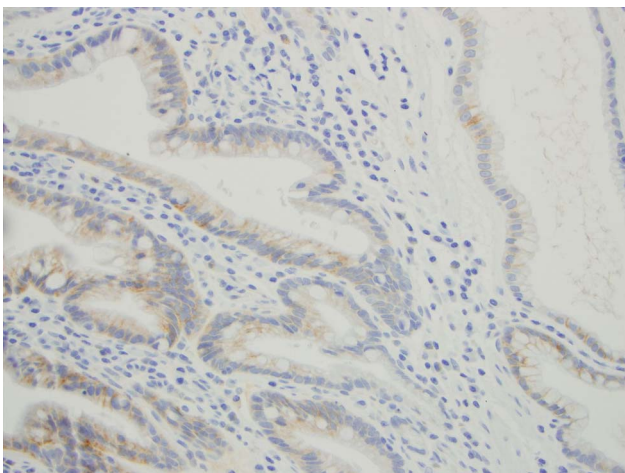
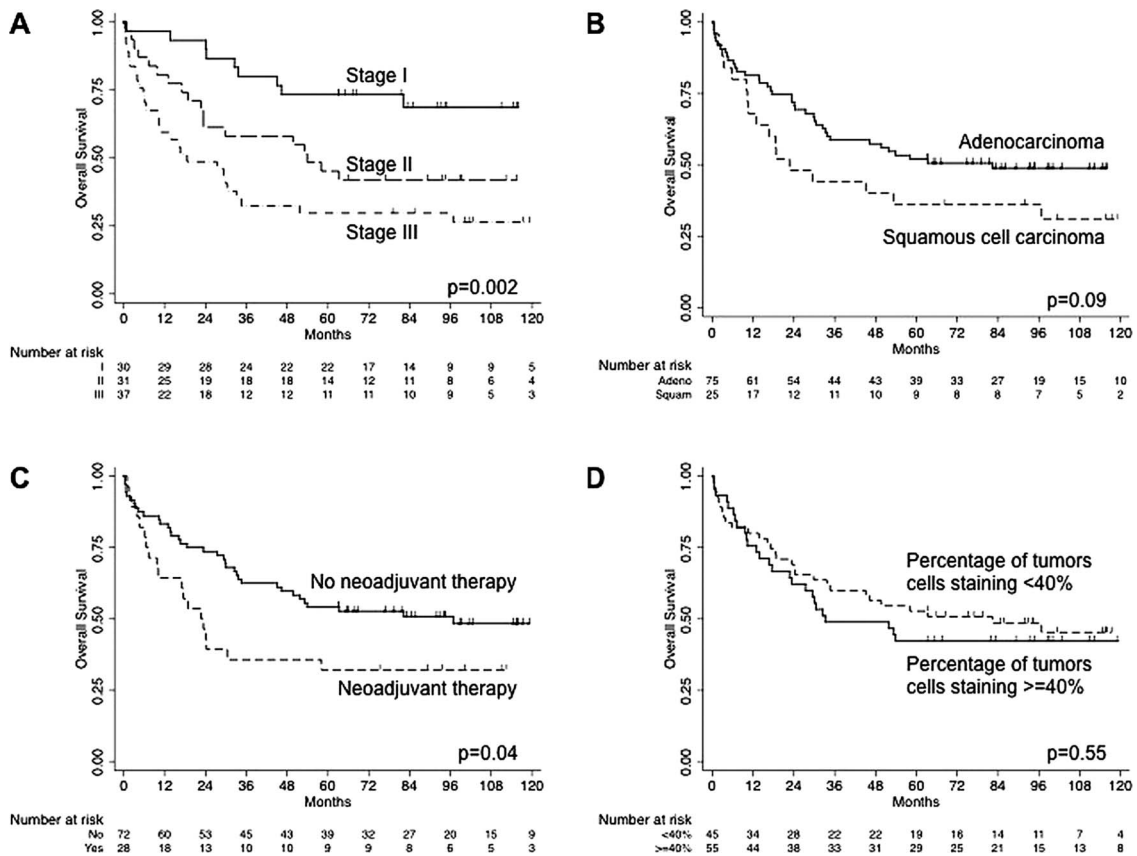


Figure 3 Sulphatase 2 staining of adjacent Barrett's oesophagus.

DISCUSSION

This study showed that higher SULF2 expression by immunohistochemistry is associated with worse overall survival in oesophageal cancer. After adjusting for age, sex, race, histological type, stage and neoadjuvant therapy, for every 10% increase in the percentage of tumour cells staining for SULF2, the risk of death increases by 13%. As expected, higher stage was also significantly associated with worse overall survival. Interestingly, patients who underwent neoadjuvant therapy had worse overall survival than those who did not. This result likely reflects selection bias, in which patients diagnosed with more aggressive tumours are more likely to receive neoadjuvant therapy.

This study also showed that SULF2 staining differed by histological type, likely reflecting their distinct aetiologies. Squamous cell carcinoma samples had significantly higher percentage and intensity of tumour cells staining



than adenocarcinoma samples. These results correspond to our previous findings in non-small cell lung cancer, in which in 10 of 10 squamous cell carcinoma samples

showed staining for SULF2, while zero out of 10 adenocarcinoma samples showed staining in the tumour cells.¹⁶ However, in the aforementioned study, all

Table 2 Univariate and multivariate Cox proportional hazards models for overall survival

	Univariate analysis			Multivariate analysis		
	HR	95% CI	p Value	HR	95% CI	p Value
Age (per 10 years)	1.09	0.99 to 1.03	0.46	1.19	0.92 to 1.54	0.19
Sex						
Male	1			1		
Female	1.17	0.61 to 2.21	0.64	1.30	0.61 to 2.78	0.50
Race			0.59			0.40
White	1			1		
Asian	0.91	0.22 to 3.77	0.90	0.91	0.18 to 4.49	0.90
Black	2.21	0.53 to 9.17	0.27	3.76	0.80 to 17.57	0.09
Histological type						
Adenocarcinoma	1			1		
Squamous cell	1.63	0.92 to 2.88	0.10	1.14	0.53 to 2.43	0.74
Pathological stage			0.004			0.001
I	1			1		
II	2.42	1.08 to 5.38	0.03	2.65	1.13 to 6.22	0.03
III	4.01	1.88 to 8.55	<0.0005	5.14	2.23 to 11.82	<0.0005
IV	2.14	0.27 to 16.94	0.47	0.94	0.11 to 8.10	0.96
Neoadjuvant therapy						
No	1			1		
Yes	1.78	1.02 to 3.11	0.04	2.65	1.38 to 5.09	0.003
Percent (per 10%)	1.04	0.95 to 1.14	0.42	1.13	1.01 to 1.26	0.03

squamous cell carcinoma and adenocarcinoma samples showed SULF2 staining of tumour stroma cells.

The association of SULF2 and overall survival corresponds to previous findings in two other types of cancer. Lai *et al*¹⁵ showed that increased *SULF2* transcript expression was associated with worse overall survival in patients with hepatocellular carcinoma. Tessema *et al*¹⁷ showed that *SULF2* promoter methylation was associated with improved overall survival in patients with non-small cell lung cancer. Our results show that increased SULF2 at the protein level is associated with worse overall survival in a third type of cancer, consistent with an important role for this extracellular enzyme in carcinogenesis.

The *SULFs* were first discovered in a study on quail embryo development, with the human orthologues, *SULF1* and *SULF2*, cloned soon thereafter.¹⁰ *SULFs* have been shown to regulate several signalling pathways by changing the sulphation status of extracellular HSPGs. Ai *et al*⁷ established that the *SULFs* promote canonical Wnt signalling, by removing 6OS from the heparan sulphate chains of HSPGs, allowing the Wnt ligands to interact with its Frizzled receptor, leading to activation of Wnt target genes.

Originally, *SULFs* were thought to be tumour suppressors, because forced expression of an *SULF* in several tumour cell lines caused reduced growth-factor signalling by heparin-binding epidermal growth factor, fibroblast growth factor-2 or hepatocyte growth factor, as well as diminished tumorigenicity.^{19–22} Soon, however, they were thought to play an oncogenic role, as one or both *SULF* genes were found to be overexpressed in subsets of multiple tumours (breast, pancreatic, hepatocellular carcinoma, head and neck, lung, multiple myeloma and glioblastoma).^{10 11 13–16 20 23–25} *SULF2* in particular has been identified as a candidate cancer-causing gene in two unbiased screening studies in human breast cancer and mouse brain cancer.^{26 27} Moreover, in pancreatic and lung cancer cell lines, *SULF2* knockdown led to reduced proliferation and reduced growth of xenografts in mice, likely due to its effect on canonical Wnt signalling pathway.^{13 16} In hepatocellular cancer cell lines, overexpression of *SULF2* led to increased proliferation and migration and markedly enhanced the tumorigenicity of the cells in nude mice.¹⁵ Similarly, a recent study showed *SULF2* transcripts and protein upregulation in human malignant astrocytoma, and, using knockdown and transgenic approaches, demonstrated a *SULF2*-dependent increase in PDGFR signalling, tumour cell proliferation in vitro and tumour growth in vivo.¹⁴ The present study is the first to investigate *SULF2* in oesophageal cancer.

Our results show that *SULF2* was expressed in 93 of 100 human oesophageal tumours. Importantly, high expression of *SULF2* was associated with worse prognosis in oesophageal cancer. As a secreted molecule, *SULF2* is a potential diagnostic or prognostic biomarker. Current screening programmes for patients with Barrett's oesophagus or severe gastro-oesophageal reflux are

ineffective in preventing oesophageal adenocarcinoma, due to the slow rate of progression and resultant low incidence of oesophageal cancer.⁴ The development of *SULF2* as a biomarker may help identify a high-risk group that would make screening more feasible. In our study, 15 out of 20 (75%) adjacent Barrett's oesophagus samples had *SULF2* staining. Also, 5 of 5 (100%) adjacent carcinoma in situ samples had *SULF2* staining, although 3 of 6 (50%) adjacent benign squamous epithelium had *SULF2* staining as well. Future studies are needed to evaluate *SULF2* specifically in these precursor lesions as well as in blood or other body fluids.

Given the prevalence and poor prognosis of oesophageal cancer, advances in chemotherapy and targeted therapies based on key molecular pathways are greatly needed. Although further investigations are required for validation of the role of *SULF2* in oesophageal cancer, our results raise the possibility that *SULF2* could be a therapeutic target. *SULF2* is an extracellular enzyme and thus is potentially amenable to inhibition by either antibody-based or small-molecule drugs. *SULF1* and *SULF2* double knockout mice had increased perinatal mortality, and the mice that did survive had lower body weight²⁸; however *SULF1* and *SULF2* single knockout mice appear normal and have normal survival, suggesting that each enzyme might be singly targeted.

In conclusion, we show *SULF2* expression in oesophageal carcinoma. The vast majority of adenocarcinoma samples and all the squamous cell carcinoma samples had some degree of *SULF2* protein expression. Higher percentage of tumour cells staining for *SULF2* is significantly associated with worse overall survival in these patients. Patients with oesophageal cancer have an extremely poor prognosis, and *SULF2* is a promising biomarker that could play an important role in the diagnosis and prognosis.

Acknowledgements Thanks to Loretta Chan at the UCSF Helen Diller Family Comprehensive Cancer Center Immunohistochemistry Core for performing the immunohistochemical staining.

Contributors NSL was involved in study design, patient selection, data collection, statistical analysis and interpretation and paper writing. MVZ contributed in study design, patient selection, reviewing H&E slides, scoring *SULF2* stained slides, data analysis and interpretation and paper revision. SDR and DMJ contributed in data analysis and interpretation and paper revision and HLA contributed in study design, data analysis and interpretation and paper revision. All authors approved the final version to be published.

Funding This work was supported in part by The Doctors Cancer Foundation grant A118560 and the American Cancer Society grant IRG-97-150-13. SDR is supported by the NIH grant AI053194.

Competing interests None.

Ethics approval UCSF Committee on Human Research.

Provenance and peer review Not commissioned; externally peer reviewed.

Data sharing statement No additional data are available.

REFERENCES

1. Jemal A, Bray F, Center MM, *et al*. Global cancer statistics. *CA Cancer J Clin* 2011;61:69–90.

2. Demeester SR. Epidemiology and biology of esophageal cancer. *Gastrointest Cancer Res* 2009;3:S2–5.
3. Jemal A, Center MM, DeSantis C, *et al*. Global patterns of cancer incidence and mortality rates and trends. *Cancer Epidemiol Biomarkers Prev* 2010;19:1893–907.
4. Lagergren J, Lagergren P. Oesophageal cancer. *BMJ* 2010;341:c6280.
5. Bernfield M, Gotte M, Park PW, *et al*. Functions of cell surface heparan sulfate proteoglycans. *Annu Rev Biochem* 1999;68:729–77.
6. Lamanna WC, Kalus I, Padva M, *et al*. The heparanome—the enigma of encoding and decoding heparan sulfate sulfation. *J Biotechnol* 2007;129:290–307.
7. Ai X, Do AT, Lozynska O, *et al*. QSulf1 remodels the 6-O sulfation states of cell surface heparan sulfate proteoglycans to promote Wnt signaling. *J Cell Biol* 2003;162:341–51.
8. Ai X, Kitazawa T, Do AT, *et al*. SULF1 and SULF2 regulate heparan sulfate-mediated GDNF signaling for esophageal innervation. *Development* 2007;134:3327–38.
9. Viviano BL, Paine-Saunders S, Gasiunas N, *et al*. Domain-specific modification of heparan sulfate by QSulf1 modulates the binding of the bone morphogenetic protein antagonist Noggin. *J Biol Chem* 2004;279:5604–11.
10. Morimoto-Tomita M, Uchimura K, Werb Z, *et al*. Cloning and characterization of two extracellular heparin-degrading endosulfatases in mice and humans. *J Biol Chem* 2002;277:49175–85.
11. Rosen SD, Lemjabbar-Alaoui H. Sulf-2: an extracellular modulator of cell signaling and a cancer target candidate. *Expert Opin Ther Targets* 2010;14:935–49.
12. Bret C, Moreaux J, Schved JF, *et al*. SULFs in human neoplasia: implication as progression and prognosis factors. *J Transl Med* 2011;9:72–81.
13. Nawroth R, van Zante A, Cervantes S, *et al*. Extracellular sulfatases, elements of the Wnt signaling pathway, positively regulate growth and tumorigenicity of human pancreatic cancer cells. *PLoS One* 2007;2:e392.
14. Phillips JJ, Huillard E, Robinson AE, *et al*. Heparan sulfate sulfatase SULF2 regulates PDGFR α signaling and growth in human and mouse malignant glioma. *J Clin Invest* 2012;122:911–22.
15. Lai JP, Sandhu DS, Yu C, *et al*. Sulfatase 2 up-regulates glypican 3, promotes fibroblast growth factor signaling, and decreases survival in hepatocellular carcinoma. *Hepatology* 2008;47:1211–22.
16. Lemjabbar-Alaoui H, van Zante A, Singer MS, *et al*. Sulf-2, a heparan sulfate endosulfatase, promotes human lung carcinogenesis. *Oncogene* 2010;29:635–46.
17. Tessema M, Yingling CM, Thomas CL, *et al*. SULF2 methylation is prognostic for lung cancer survival and increases sensitivity to topoisomerase-I inhibitors via induction of ISG15. *Oncogene* 2012;31:4107–16.
18. Esophagus and Esophagogastric Junction. In: Edge SB, Byrd DR, Compton CC, *et al*, eds. *American Joint Committee on Cancer Cancer Staging Manual*. 7th edn. Springer, 2010:129–44.
19. Lai J, Chien J, Staub J, *et al*. Loss of HSulf-1 up-regulates heparin-binding growth factor signaling in cancer. *J Biol Chem* 2003;278:23107–17.
20. Lai JP, Chien JR, Moser DR, *et al*. HSulf1 Sulfatase promotes apoptosis of hepatocellular cancer cells by decreasing heparin-binding growth factor signaling. *Gastroenterology* 2004;126:231–48.
21. Dai Y, Yang Y, MacLeod V, *et al*. HSulf-1 and HSulf-2 are potent inhibitors of myeloma tumor growth in vivo. *J Biol Chem* 2005;280:40066–73.
22. Li J, Kleeff J, Abiatar I, *et al*. Enhanced levels of Hsulf-1 interfere with heparin-binding growth factor signaling in pancreatic cancer. *Mol Cancer* 2005;4:14.
23. Grigoriadis A, Mackay A, Reis-Filho JS, *et al*. Establishment of the epithelial-specific transcriptome of normal and malignant human breast cells based on MPSS and array expression data. *Breast Cancer Res* 2006;8:R56.
24. Kudo Y, Ogawa I, Kitajima S, *et al*. Periostin promotes invasion and anchorage-independent growth in the metastatic process of head and neck cancer. *Cancer Res* 2006;66:6928–35.
25. Castro NP, Osorio CA, Torres C, *et al*. Evidence that molecular changes in cells occur before morphological alterations during the progression of breast ductal carcinoma. *Breast Cancer Res* 2008;10:R87.
26. Johansson FK, Brodd J, Eklof C, *et al*. Identification of candidate cancer-causing genes in mouse brain tumors by retroviral tagging. *Proc Natl Acad Sci USA* 2004;101:11334–7.
27. Sjoblom T, Jones S, Wood LD, *et al*. The consensus coding sequences of human breast and colorectal cancers. *Science* 2006;314:268–74.
28. Holst CR, Bou-Reslan H, Gore BB, *et al*. Secreted sulfatases Sulf1 and Sulf2 have overlapping yet essential roles in mouse neonatal survival. *PLoS One* 2007;2:e575.