

# Lawrence Berkeley National Laboratory

## Biological Systems & Engineering

### Title

Correction to: Quantitative phosphoproteomic analysis reveals reciprocal activation of receptor tyrosine kinases between cancer epithelial cells and stromal fibroblasts

### Permalink

<https://escholarship.org/uc/item/8xs8r7xn>

### Journal

Clinical Proteomics, 15(1)

### ISSN

1542-6416

### Authors

Wu, Xinyan

Zahari, Muhammad Saddiq

Renuse, Santosh

et al.

### Publication Date

2018-12-01

### DOI

10.1186/s12014-018-9210-4

### Copyright Information

This work is made available under the terms of a Creative Commons Attribution License, available at <https://creativecommons.org/licenses/by/4.0/>


Peer reviewed

CORRECTION

Open Access



# Correction to: Quantitative phosphoproteomic analysis reveals reciprocal activation of receptor tyrosine kinases between cancer epithelial cells and stromal fibroblasts

Xinyan Wu<sup>1,2,8\*</sup>, Muhammad Saddiq Zahari<sup>1,2†</sup>, Santosh Renuse<sup>1,2,3†</sup>, Nandini A. Sahasrabudhe<sup>1,2,3,4</sup>, Raghothama Chaerkady<sup>1,2</sup>, Mi-Sik Kim<sup>1,2</sup>, Mary Jo Fackler<sup>5</sup>, Martha Stampfer<sup>7</sup>, Edward Gabrielson<sup>5,6</sup>, Saraswati Sukumar<sup>5</sup> and Akhilesh Pandey<sup>1,2,3,8\*</sup> 

## Correction to: *Clin Proteom* (2018) 15:21

<https://doi.org/10.1186/s12014-018-9197-x>

Unfortunately, after publication of this article [1], errors were noticed in Figs. 3 and 4. The “T” in the word “pTyr” was missing in Fig. 3. The word “change” was missing

after the word “Fold” in the label of y axis in Fig. 4a. The “e” in the word “Co-culture” was missing in Fig. 4a. The correct figures are presented in this correction. The original article has also been updated.

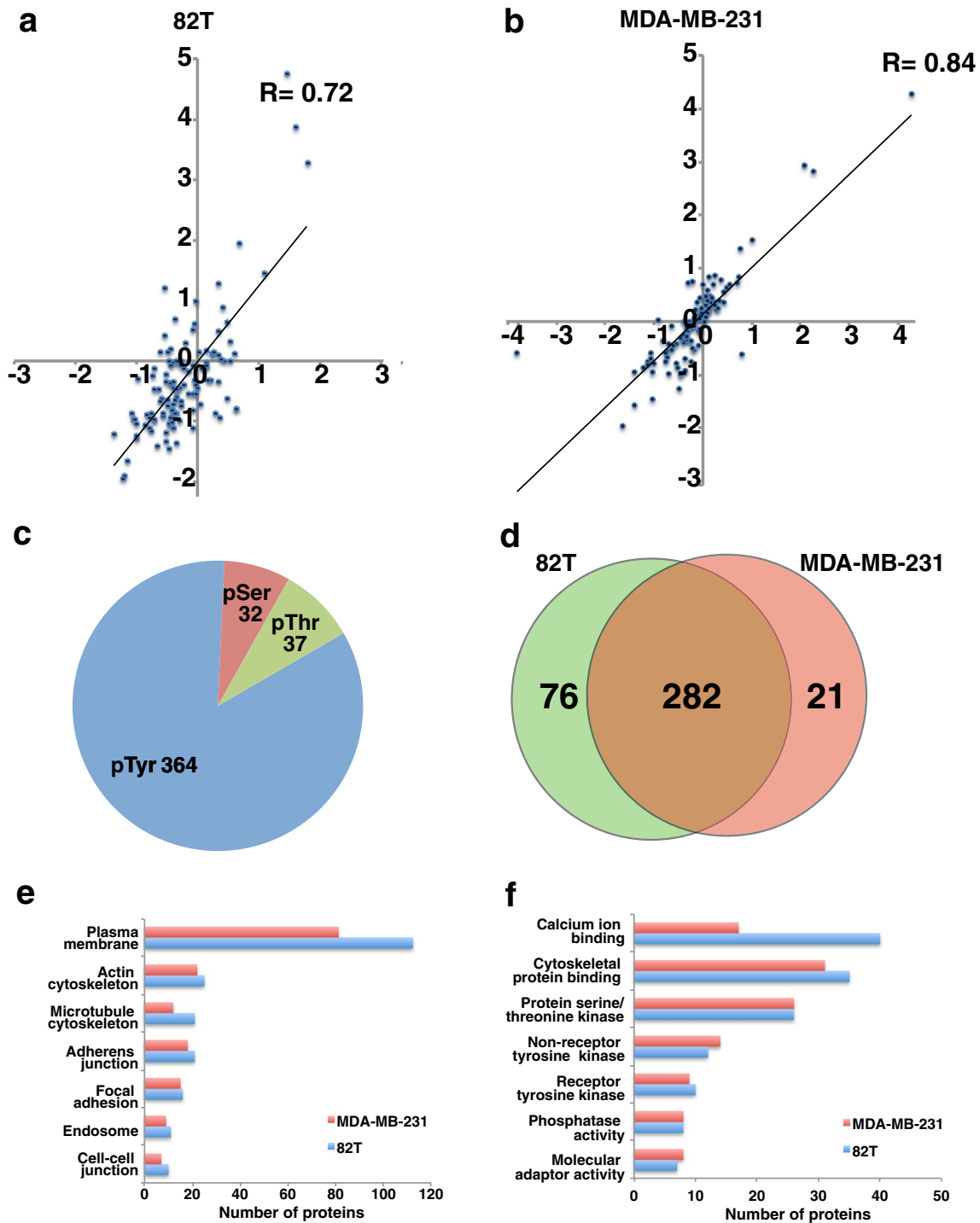
\*Correspondence: xinyan@jhmi.edu; pandey@jhmi.edu

†Xinyan Wu, Muhammad Saddiq Zahari and Santosh Renuse contributed equally to this work

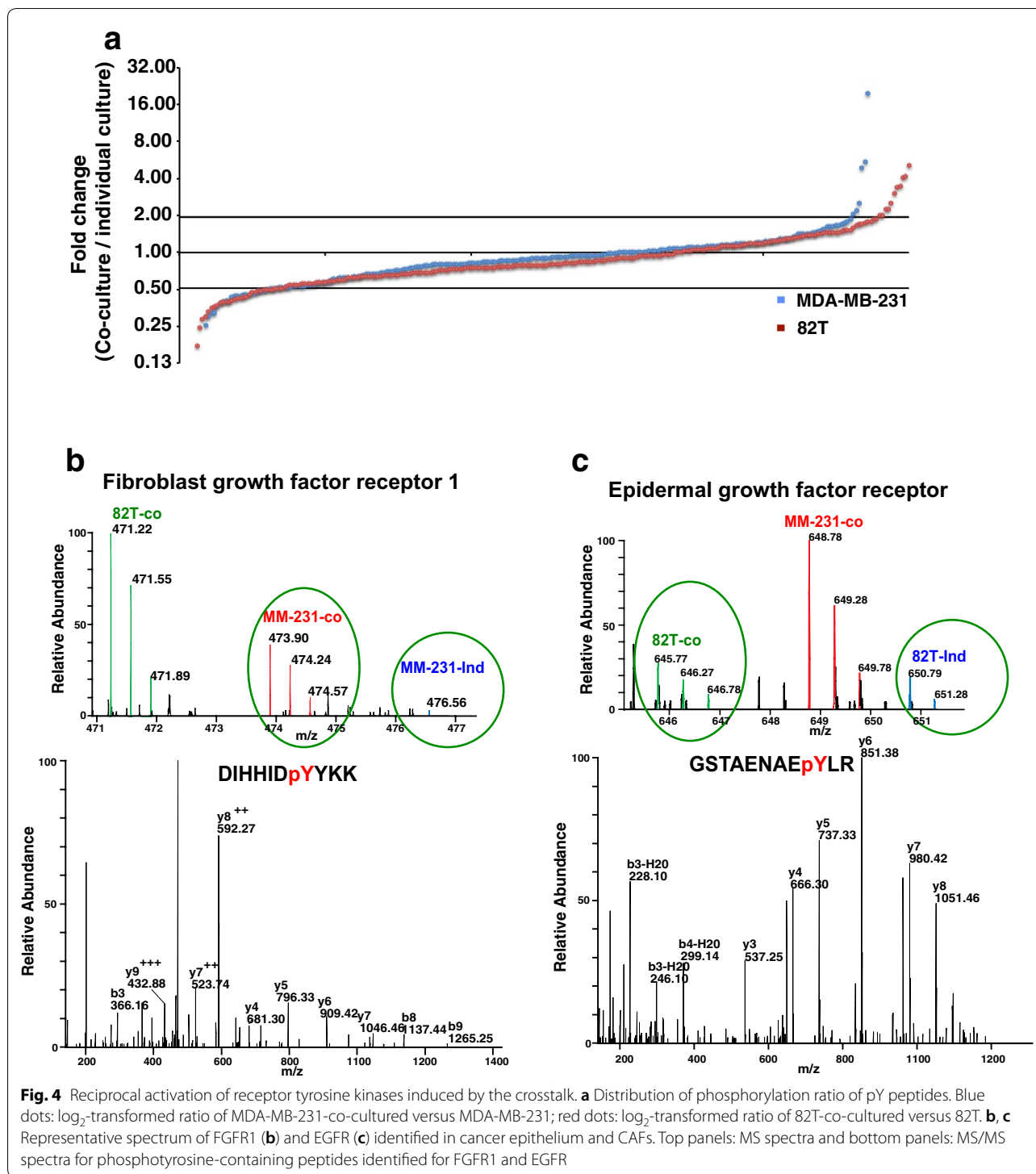
<sup>8</sup> Johns Hopkins University, 733 N. Broadway, Baltimore, MD 21205, USA

Full list of author information is available at the end of the article





**Fig. 3** Phosphotyrosine profiling of cancer epithelial cells and interacting CAFs. **a, b** Density scatter plot of  $\log_2$ -transformed phosphopeptide intensity ratios (82T-co-cultured vs. 82T (A) and MDA-MB-231-co-cultured vs. MDA-MB-231) from two SILAC biological experiments. **c** Pie chart showing the composition of pTyr and pSer/Thr peptides identified in the phosphoproteomic analysis. **d** Venn diagram showing overlap of phosphopeptides identified in MDA-MB-231 and 82T cells. **e, f** Gene ontology analysis of phosphoproteins in cancer epithelium and CAFs. **e** Cellular component; **f** molecular functions



**Author details**

<sup>1</sup> Department of Biological Chemistry, Johns Hopkins University, Baltimore, MD, USA. <sup>2</sup> McKusick-Nathans Institute of Genetic Medicine, Johns Hopkins University, Baltimore, MD, USA. <sup>3</sup> Institute of Bioinformatics, International Technology Park, Bangalore 560066, India. <sup>4</sup> Manipal Academy of Higher Education, Manipal, Karnataka 576104, India. <sup>5</sup> Department of Oncology, Johns Hopkins University School of Medicine, Baltimore, MD 21205, USA. <sup>6</sup> Department of Pathology, Johns Hopkins University School of Medicine, Baltimore,

MD 21205, USA. <sup>7</sup> Division of Biological Systems and Engineering, Lawrence Berkeley National Laboratory, Berkeley, CA, USA. <sup>8</sup> Johns Hopkins University, 733 N. Broadway, Baltimore, MD 21205, USA.

The original article can be found online at <https://doi.org/10.1186/s12014-018-9197-x>.

### **Publisher's Note**

Springer Nature remains neutral with regard to jurisdictional claims in published maps and institutional affiliations.

Received: 23 October 2018 Accepted: 23 October 2018

Published online: 17 November 2018

### **References**

1. Wu X, Zahari MS, Renuse S, Sahasrabudhe NA, Chaerkady R, Kim M, Fackler MJ, Stampfer M, Gabrielson E, Sukumar S, Pandey A. Quantitative phosphoproteomic analysis reveals reciprocal activation of receptor tyrosine kinases between cancer epithelial cells and stromal fibroblasts. *Clin Proteom*. 2018;15:21. <https://doi.org/10.1186/s12014-018-9197-x>.