

UC Davis

UC Davis Previously Published Works

Title

Evidence for novel genetic loci associated with metabolic traits in Yup'ik people

Permalink

<https://escholarship.org/uc/item/8vt3n344>

Journal

American Journal of Human Biology, 25(5)

ISSN

1042-0533

Authors

Aslibekyan, Stella
Vaughan, Laura Kelly
Wiener, Howard W
[et al.](#)

Publication Date

2013-09-01

DOI

10.1002/ajhb.22429

Peer reviewed



Published in final edited form as:

Am J Hum Biol. 2013 September ; 25(5): 673–680. doi:10.1002/ajhb.22429.

Evidence for novel genetic loci associated with metabolic traits in Yup'ik people

Stella Aslibekyan, PhD¹, Laura Kelly Vaughan, PhD², Howard W. Wiener, PhD¹, Dominick J. Lemas, PhD³, Yann C. Klimentidis, PhD⁴, Peter J. Havel, DVM, PhD⁵, Kimber L. Stanhope, PhD⁵, Diane M. O'Brien, PhD⁶, Scarlett E. Hopkins, MA⁶, Bert B. Boyer, PhD⁶, and Hemant K. Tiwari, PhD²

¹Department of Epidemiology, University of Alabama at Birmingham, Birmingham, AL 35294

²Section on Statistical Genetics, Department of Biostatistics, University of Alabama at Birmingham, Birmingham, AL 35294

³Department of Pediatrics, University of Colorado Anschutz Medical Campus, Aurora, CO 80045

⁴Epidemiology and Biostatistics Division, Mel and Enid Zuckerman College of Public Health, University of Arizona, Tucson, AZ 85724

⁵Departments of Nutrition and Molecular Biosciences, University of California at Davis, Davis, CA 95616

⁶Center for Alaska Native Health Research, Institute of Arctic Biology, University of Alaska at Fairbanks, Fairbanks, AK 99775

Abstract

Objectives: To identify genomic regions associated with fasting plasma lipid profiles, insulin, glucose, and glycosylated hemoglobin in a Yup'ik study population, and to evaluate whether the observed associations between genetic factors and metabolic traits were modified by dietary intake of marine derived omega-3 polyunsaturated acids (n-3 PUFA).

Methods: A genome-wide linkage scan was conducted among 982 participants of the Center for Alaska Native Health Research study. n-3 PUFA intake was estimated using the nitrogen stable isotope ratio (¹⁵N) of erythrocytes. All genotyped SNPs located within genomic regions with LOD scores > 2 were subsequently tested for individual SNP associations with metabolic traits using linear models that account for familial correlation as well as age, sex, community group and n-3 PUFA intake. Separate linear models were fit to evaluate interactions between the genotype of interest and n-3 PUFA intake.

Results: We identified several chromosomal regions linked to serum apolipoprotein A2, high density lipoprotein-, low density lipoprotein-, and total cholesterol, insulin, and glycosylated hemoglobin. Genetic variants found to be associated with total cholesterol mapped to a region containing previously validated lipid loci on chromosome 19, and additional novel peaks of biological interest were identified at 11q12.2-11q13.2. We did not observe any significant interactions between n-3 PUFA intake, genotypes, and metabolic traits.

Conclusions: We have completed a whole genome linkage scan for metabolic traits in Native Alaskans, confirming previously identified loci, and offering preliminary evidence of novel loci implicated in chronic disease pathogenesis in this population.

Keywords

Alaska Native; metabolism; multi-point linkage genome scan

The prevalence of type 2 diabetes (T2D) in Alaska Native communities has historically been lower than the general US population, although the specific genetic and environmental factors that underlie these statistics remain poorly characterized. Accumulating evidence suggests that elements of the traditional diet such as omega-3 polyunsaturated fatty acids (n-3 PUFA) and low carbohydrate content (Naylor *et al.*, 2003) may contribute to the low T2D prevalence in these communities. More recently, Alaska Native people have experienced a more dramatic rise in T2D burden than other Native groups, with the age-adjusted prevalence increasing from 17.3/1,000 in 1985 to 47.6/1,000 (Narayanan *et al.*, 2010). This increase may be attributed to increased awareness, improved access to healthcare, decreased overall mortality rates, a change in diagnostic criteria in 1997, as well as nutritional and lifestyle transitions (Naylor *et al.*, 2003). Moreover, the effects of the changing diet on chronic metabolic disease risk may be mediated by genetic factors that are unique to isolated populations (Lemas *et al.*, 2013).

Current understanding of the genetics of metabolic traits among circumpolar populations is limited in comparison to other ethnic groups, highlighting the need for comprehensive scans to identify the major susceptibility loci. Two recent candidate gene studies, conducted among the Canadian Inuit (Rudkowska *et al.*, 2013) and Yup'ik people living in Southwest Alaska (Lemas *et al.*, 2012) suggested that consumption of marine-derived n-3 PUFA may influence lipid traits through interactions with common genetic variants implicated in metabolic pathways. However, few studies have comprehensively examined the role of genes or gene-diet interactions in the etiology of metabolic traits in communities with a historically low prevalence of T2D, despite ample evidence of their etiologic relevance in other populations (Ntzani and Kawoura, 2012; Franks *et al.*, 2007; Cole *et al.*, 2005).

Rudkowska *et al.* showed that the minor allele frequency distribution of several metabolism-related genetic markers differs markedly between the Inuit and Caucasians, and other studies of complex traits (Hegele *et al.*, 1997; Hegele *et al.*, 1999) also suggest differences in susceptibility genes. To further elucidate these differences, the purpose of this study was to examine the genetic architecture of metabolic traits in a Yup'ik population using whole-genome linkage analysis, followed by targeted association testing for variants genotyped within the observed peaks. Additionally, this study investigated potential interactions of these loci with habitual intake of marine-derived n-3 PUFA.

MATERIALS AND METHODS

Participants

The Center for Alaska Native Health Research (CANHR) studies genetic, behavioral, and dietary risk factors underlying obesity and their relationship to diabetes and cardiovascular disease among the Yup'ik people (Mohatt *et al.*, 2007). Recruitment of Yup'ik participants was initiated in 2003 and continues in 11 Southwest Alaska communities. All residents are invited to participate, with the study sample age distribution reflecting that of all eligible participants as summarized by the 2000 U.S. census. The analyses in this report were performed on 1136 non-pregnant Yup'ik people that were 14 years old at the time of enrollment.

Ethics

Participants provided written informed consent using protocols approved by the University of Alaska Institutional Review Board, the National and Alaska Area Indian Health Service Institutional Review Boards, and the Yukon Kuskokwim Human Studies Committee.

Measurements of metabolic traits

A radioimmunoassay kit was used to assay fasting insulin (FI) with an I¹²⁵-iodinated insulin tracer, anti-human insulin specific antibody, and human insulin standards (Linco Research, St Charles, MO, USA), for which the intra- and inter-assay variations were respectively 5.8% and 10.2%. A Cholestech LDX analyzer was used to measure fasting glucose (FG), and glycosylated hemoglobin (HbA1c) was quantified with a DCA 2000+ analyzer (Bayer AG, Leverkusen, Germany). Lipid profiles, specifically low-density lipoprotein (LDL) cholesterol, high-density lipoprotein (HDL) cholesterol, very low-density lipoprotein (VLDL) cholesterol, total cholesterol, triglycerides (TG), and apolipoproteins A1 (ApoA1) and A2 (ApoA2) were measured as described in previous publications from our group (Lemas *et al.*, 2012; Boyer *et al.*, 2007).

Dietary n-3 PUFA intake measurements

The nitrogen stable isotope ratio (¹⁵N) of red blood cells (RBC) was used to assess n-3 PUFA intake as previously described (O'Brien *et al.*, 2009). RBC aliquots were autoclaved for 20 minutes at 121° C to destroy blood-borne pathogens, and samples were weighed into 3.5 × 3.75 mm tin capsules and freeze dried to a final mass of 0.2 - 0.4 mg. Samples were analyzed at the Alaska Stable Isotope Facility by continuous-flow isotope ratio mass spectrometry, using a Costech ECS4010 Elemental Analyzer (Costech Analytical Technologies, Valencia, CA, USA) interfaced to a Finnigan Delta Plus XP isotope ratio mass spectrometer via the ConFlo III interface (Thermo-Finnigan Inc., Bremen, Germany). The conventional method of expressing nitrogen isotope ratios at natural abundance is in “permil” (‰) abundance of ¹⁵N relative to atmospheric nitrogen (¹⁵N/¹⁴N_{atm} = 0.0036765), as follows:

$$^{15}\text{N} = [(\text{}^{15}\text{N}/\text{}^{14}\text{N}_{\text{sample}} - \text{}^{15}\text{N}/\text{}^{14}\text{N}_{\text{atm}}) / (\text{}^{15}\text{N}/\text{}^{14}\text{N}_{\text{atm}})] \cdot 1000\text{‰}$$

Laboratory reference materials (peptone, ¹⁵N = 7.00) were concurrently prepared and run to assess analytical accuracy and precision; these were analyzed after every eighth sample and estimated ¹⁵N at 7.0 ± 0.2‰ (mean ± SD). The range of isotopic variation in the data (9‰) was very large relative to analytical precision (0.2‰). To avoid undue influence of extreme values and allow for a non-linear relationship suggested by prior evidence, this variable was modeled as a categorical variable, defined by the quartiles of the ¹⁵N measurements. We identified the quartiles of values of ¹⁵N, and assigned values to three dichotomous variables as follows. Individuals with values below the first quartile were assigned (0,0,0) to the three variables. Those with values at least equal to the first quartile but below the second were given the values (1,0,0). Those with values at least equal to the second quartile but below the third were given the values (1,1,0). Finally, those with values at least equal to the third quartile were given the values (1,1,1).

Genotyping

Participants were genotyped for 6090 single nucleotide polymorphisms (SNPs) from the Illumina's Linkage-IV panel (Illumina, San Diego, CA, USA) at the Center for Inherited Disease Research (CIDR). The Illumina Linkage-12 panel spans the entire genome with an average genetic distance of 0.58 cM and 441 kb physical map spacing.

Pedigree analysis

Pedigree data was extracted from the Progeny database (Progeny Software LLC, South Bend, IN, USA), and merged as appropriate into larger pedigrees using the program Pedmerge. Pedmerge allows for accurate and efficient merger of separately ascertained pedigrees that belong to the same extended family (Plaetke and Balbi, 2010). The 1136 individuals included in this study were members of 63 independent pedigrees. Among these, 21 pedigrees contained at least two individuals and 42 individuals were singletons; both categories were subsequently excluded from the linkage analyses. The majority of the genotyped participants (n=1037) were members of the single largest pedigree, which was too large to analyze with standard frequentist methods. For this reason, that pedigree was cut using Pedstr into 113 smaller, independent sub-pedigrees each containing between 2 and 22 genotyped participants. Pedstr is an automatic algorithm that splits large pedigrees into fragments of specified size, which can subsequently be used in multi-point linkage analysis (Kirichenko *et al.*, 2009). Of the total 938 genotyped participants in these cut pedigrees, 52 were repeated once or twice (e.g. as a founder in one pedigree and a child in another) to maintain close relationships; 883 of the original genotyped participants were retained. The remaining 154 genotyped individuals were not closely related to any of the retained participants. A summary of the relative pairs included in the analysis is given in Table 1.

Quality control of phenotypic and genotypic data

Simple linear models were fitted to outcome variables using all available non-genetic covariates, and descriptive statistics of the residuals were examined using R software (v2.10.1, R Development Core, 2009). If necessary, traits were transformed using either logarithmic (for HDL and TG) or Box-Cox approaches (Box and Cox, 1964) (for ApoA1, ApoA2, FG, FI, HbA1C) to reduce the residual kurtosis of the traits and avoid artificially inflated evidence for linkage (Blangero *et al.*, 2001). Estimates of heritability and residual kurtosis for raw or appropriately transformed traits are given in Table 2. All traits exhibited statistically significant heritability estimates. For the traits that still had residual kurtosis above 0.8 (ApoA2, FG, HbA1c, FI, and untransformed LDL), subsequent linkage analyses used the t-distribution option to control type I error.

The genotypic data was subject to several quality control measures prior to whole-genome linkage analysis. First, Pedcheck was used to exclude SNPs that were not consistent with Mendelian segregation. Pedcheck is a program designed to check pedigree files to identify genotype incompatibilities in linkage analysis (O'Connell and Weeks, 1998). Second, SNPs that deviated from Hardy-Weinberg equilibrium (HWE) proportions ($p < 0.0001$) were identified using an algorithm that considers familial relationships (Bourgain *et al.*, 2004) and excluded from the analysis. Finally, the program Hclust was used to select a subset of SNPs with low pairwise linkage disequilibrium (LD) to further reduce inflation of linkage evidence. Hclust performs hierarchical cluster analysis to identify the most parsimonious set of SNPs for further analysis based on linkage disequilibrium (Rinaldo *et al.*, 2005)

All genotypes that passed the above quality checks, including those excluded by the Hclust algorithm, were used to ascertain cryptic population substructure using the PCA (Principal Components of Analysis) program from the Eigenstrat package. Eigenstrat was developed to detect and correct for population stratification in genome-wide association studies (Price *et al.*, 2006). The computed values of the each component were grouped according to the villages of residence. Although the first component had no obvious systematic structure, the second component naturally split the genotyped sample into two groups, consistent with proximity of the villages to the coast. This observation was used to define "community group" as a dichotomous covariate included in subsequent analyses. The distribution of the second principal component of ancestry is shown as a box plot in Figure 1. Communities 1,

2, 3, 8, 9, and 11 (group 1) are located closer to the coast, while the remaining communities (group 2) are considered upriver (tundra) communities.

Linkage analysis

SOLAR (Sequential Oligogenic Linkage Analysis Routines) was used to estimate the heritability and to test for whole-genome linkage. SOLAR is an extensive software package for genetic variance components analysis, including linkage (Almasy and Blangero, 1998). The variance component approach implemented in SOLAR requires an estimate of locus specific allelic sharing identical by descent (IBD), which was computed using MERLIN (Multipoint Engine for Rapid Likelihood Inference). MERLIN uses the Lander-Green approach to perform multipoint linkage analysis (Abecasis *et al.*, 2002). All models run in SOLAR included age, sex, community group, and n-3 PUFA intake. In order to allow for non-linear effects of continuous covariates (age and n-3 PUFA intake) without undue influence of extreme values, both of these covariates were included in the models as three dichotomous variables to indicate quartiles.

Association analysis

All genotyped SNPs under linkage peaks identified in the linkage analysis that exceeded a LOD score of 2 and satisfied HWE constraints were tested for association with the traits using genetic association program ASSOC based on methods developed in George and Elston (1987) and Elston *et al.* (1992), which models the full familial correlation structure of the pedigree. ASSOC is a part of the Statistical Analysis for Genetic Epidemiology (S.A.G.E) suite of software, and is used in pedigree studies to estimate associations between traits and covariates as well as familial correlations, or heritability. The ASSOC program is able to handle arbitrary pedigrees, so the original pedigree was used rather than the pedigree processed by Pedstr (Kirichenko *et al.*, 2009). All association models fit using ASSOC included the same non-genetic covariates that were used for the linkage analysis: sex, age, community group, and ¹⁵N quartiles. For each SNP, three models were run: a baseline model containing only non-genetic covariates; a model containing non-genetic covariates and the SNP genotype as an additive effect; and a model containing non-genetic covariates, SNP genotype as an additive effect, and interaction between SNP effect and ¹⁵N quartiles. Likelihood ratio tests were used to compare the models.

To correct for multiple testing in the association analyses, the effective number of SNPs was determined using spectral decomposition of the correlation matrix (Li and Ji, 2005; Nyholt, 2004).

RESULTS

Clinical and demographic characteristics of the study population are presented by gender in Table 3. Of 982 individuals in the study, approximately 3% (n=29) had diagnosed T2D. Women represented slightly more than half of the overall study population, although that proportion was higher (57%) in the upriver communities. Consistent with a recent report, Yup'ik women had a higher intake of n-3 PUFAs as ascertained by ¹⁵N (Nash *et al.*, 2012), as well as higher average fasting glucose, HbA1c and insulin relative to Yup'ik men. While circulating triglycerides, LDL, and VLDL cholesterol did not vary by gender, Yup'ik women had higher levels of total and HDL cholesterol as well as ApoA1, and Yup'ik men had higher levels of ApoA2.

All linkage findings that exceeded the cutoff LOD score of 2 are presented as genome-wide plots in Figure 2 and the corresponding linkage peaks are summarized in Table 4. In general, our whole genome linkage analyses showed stronger evidence for genetic linkage with

serum lipids relative to diabetes-related traits (FI, FG, or HbA1C). Specifically, we found a region on chromosome 11 (11p13-11q13.1) with the most robust evidence for linkage with LDL cholesterol (LOD score=3.02) that overlapped with the linkage peak for total cholesterol (LOD score= 2.00). Additionally, we observed a region of interest on chromosome 10 (10q23.1-10q24.1) which contained linkage peaks for HDL cholesterol (LOD score= 2.72) and triglycerides (LOD= 2.21). We did not detect chromosomal regions linked with ApoA1 or VLDL cholesterol.

Table 5 presents the results of genetic association testing for individual SNPs located in regions identified by the genome-wide linkage scan. We identified four SNPs that were nominally ($P < 0.05$) associated with HDL cholesterol (P-values ranging from 0.0003 to 0.002), two that were associated with total cholesterol (P-values < 0.006), and one associated with ApoA2 ($P = 0.0009$). However, the two markers on chromosome 11 that were significant hits for total cholesterol were determined to be in perfect LD ($r^2 = 1$) by the SNAP algorithm (Broad Institute, Cambridge, MA). As shown in Table 5, we did not detect SNPs associations with metabolic traits that were modified by n-3 PUFA intake.

DISCUSSION

In this study, we conducted a whole-genome linkage analysis in a Yup'ik population with a historically low prevalence of T2D and identified chromosomal regions associated with metabolic traits. In addition to observing genetic linkage to several known loci associated with plasma lipid/lipoprotein parameters on chromosome 19, these data demonstrate preliminary evidence of novel candidate genetic determinants of several lipid traits. Of particular biological interest is the high LD region on chromosome 11 containing *MACROD1* and *NAA40*, which was found to be associated with measurements of total cholesterol in this sample of Yup'ik people.

MACROD1, also known as *LRP16*, is a gene with evidence of pleiotropic metabolic effects. A recent large-scale meta-analysis of genome-wide association studies (Winkler *et al.*, 2012) has identified a locus in that gene as a sex-specific determinant of obesity-related traits like the waist-to-hip ratio, showing a robust association in women but not men. Given that women in Arctic communities have some of the highest visceral obesity rates in the world (Risica *et al.*, 2000; Voruganti *et al.*, 2006), *MACROD1/LRP16* variation in this population may be an important contributor to health outcomes. Additionally, *MACROD1/LRP16* has been shown to activate nuclear factor κ B (Wu *et al.*, 2011), a key inflammatory component of the pathogenesis of atherosclerosis (Kutuk and Basaga, 2003) that can be influenced by environmental factors such as dietary cholesterol or statin therapy (Jasinska *et al.*, 2007). It is plausible that mutations in *MACROD1/LRP16* that result in the decreased expression of these genes have protective cardiometabolic effects in this population.

The quantitative trait loci (QTL) for HDL cholesterol on chromosome 19 are important for the interpretation of the study results. First, they are confirmatory linkage results for this study, as the identified genomic regions contain several loci—located in *CILP2* for HDL cholesterol and *APOE/FLJ36070* for total cholesterol—that have been shown to be robustly associated with lipid levels in a variety of populations (Teslovich *et al.*, 2010; Yan *et al.*, 2011; Zhou *et al.*, 2011). Additionally, they are consistent with data from another coastal Alaska Native study population, the Genetics of Coronary Artery Disease in Alaska Natives (GOCADAN) study (Cole *et al.*, 2005), which identified a QTL for HDL levels (LOD=3.9) and suggestive evidence for linkage of LDL size (LOD=2.5) and HDL size (LOD=2.3) to the same genetic region. Cole *et al.* postulate that the LDL receptor gene (*LDLR*) represents a strong positional candidate for this QTL, as it is located 1.5 Mbp from the peak evidence of linkage. Second, the observed peaks are adjacent to the region containing QTL for several

obesity-related anthropometric traits found the GOCADAN study (Voruganti *et al.*, 2011). This observation is consistent with another set of data from the GOCADAN population (Voruganti *et al.*, 2006) which suggests that cholesterol phenotypes and obesity-related factors have shared genetic determinants in Alaska Native people. Future studies of putative genetic associations with these phenotypes should account for such pleiotropic effects to improve estimate validity and precision (Park *et al.*, 2011).

Dietary n-3 PUFA intake did not modify the effect of genetic polymorphisms in the regions of interest on phenotypes in this Yup'ik study population. Despite the biological plausibility of such interactions, the null results of the interaction models do not support the role of long-term PUFA in modifying the observed genotype-phenotype associations. However, a recent study from the same population established that n-3 PUFAs may mediate the effect of obesity-related SNPs on adiposity (Lemas *et al.*, 2013).

These findings must be interpreted in light of several important considerations. First, metabolic traits are complex and heterogeneous phenotypes that are likely to be influenced by a combination of both rare and common genetic variants and multiple dietary and lifestyle effects. While linkage analysis can efficiently detect families enriched with rare biologically relevant polymorphisms, this method may not have sufficient power to detect common variants of small or moderate effect size (Risch and Merikangas, 1996). To address that limitation, we supplemented our whole genome linkage analysis by testing individual SNPs within the linkage panel for association with lipid and diabetes-related traits. Notably, several linkage peaks identified in our study were concordant with results from genome-wide association studies in other populations (Teslovich *et al.*, 2010). Second, the genetic regions identified in this study represent preliminary evidence, which should be independently replicated and followed with with functional genomic analyses in other populations with low T2D prevalence. Finally, the specific SNPs that were found to be significantly associated with metabolic traits may not represent the true susceptibility variant but may be in LD with the functional polymorphism, precluding any causal interpretation of these findings.

In conclusion, this study presents preliminary evidence of linkage between several genomic regions and metabolic traits in a Yup'ik population with a historically low prevalence of T2D. These results support the previous findings of lipid loci on chromosome 19 and highlight the potential importance of *MACROD1* to cardiometabolic health. Upon successful validation, these findings may serve to elucidate the heritable determinants of chronic disease in these genetically isolated, understudied communities and inform future research and clinical efforts.

Acknowledgments

We thank the community field research assistants for helping with the study recruitment and data collection, and all study participants and their communities for welcoming and teaching our research team so much about the Yup'ik way of life. Genotyping services were provided by the Center for Inherited Disease Research (CIDR). CIDR is fully funded through a federal contract from the National Institutes of Health to The Johns Hopkins University, contract No. HHSN268200782096C.

Funding: NIH DK074842, RR016430, and K01DK080188

LITERATURE CITED

Abecasis GR, Cherny SS, Cookson WO, Cardon LR. Merlin--rapid analysis of dense genetic maps using sparse gene flow trees. *Nat Genet.* 2002; 30:97–101.

- Aerts S, Vilain S, Hu S, Tranchevent L-C, Barriot R, Yan J, Moreau Y, Hassan BA, Quan XJ. Integrating computational biology and forward genetics in *Drosophila*. *PLoS Genet*. 2009; 5:e1000351. [PubMed: 19165344]
- Almasy L, Blangero J. Multipoint quantitative-trait linkage analysis in general pedigrees. *Am J Hum Genet*. 1998; 62:1198–1211. [PubMed: 9545414]
- Blangero J, Williams JT, Almasy L. Variance component methods for detecting complex trait loci. *Adv Genet*. 2001; 42:151–81. [PubMed: 11037320]
- Bourgain C, Abney M, Schneider D, Ober C, McPeck MS. Testing for Hardy-Weinberg equilibrium in samples with related individuals. *Genetics*. 2004; 168:2349–2361. [PubMed: 15371359]
- Box GEP, Cox DR. An Analysis of Transformations. *J Royal Stat Soc Ser B*. 1964; 26:211–243.
- Boyer BB, Mohatt GV, Plaetke R, Herron J, Stanhope KL, Stephensen C, Havel PJ, CANHR Project Team. Metabolic syndrome in Yup'ik Eskimos: the Center for Alaska Native Health Research (CANHR) Study. *Obesity (Silver Spring)*. 2007; 15:2535–2540. [PubMed: 18070741]
- Chen J, Bardes EE, Aronow BJ, Jegga AG. ToppGene Suite for gene list enrichment analysis and candidate gene prioritization. *Nucleic Acids Res*. 2009; 37:W305–311. [PubMed: 19465376]
- Cole SA, Laston S, Göring HHH, Diego VP, Dyer TD, Blangero J, Ebbesson S, Howard BV, MacCluer JW, Comuzzie AG. Linkage of lipoprotein phenotypes to chromosome 19p in Alaska Natives from the GOCADAN Study. *Obes Res*. 2005; 13:A100.
- Elston RC, George VT, Severtson F. The Elston-Stewart algorithm for continuous genotypes and environmental factors. *Hum Hered*. 1992; 42:16–27. [PubMed: 1555844]
- Franks PW, Mesa JL, Harding AH, Wareham NJ. Gene-lifestyle interaction on risk of type 2 diabetes. *Nut Metab Cardiovasc Dis*. 2007; 17:104–124.
- George VT, Elston RC. Testing the association between polymorphic markers and quantitative traits in pedigrees. *Genet Epidemiol*. 1987; 4:193–201. [PubMed: 3609719]
- Guberman JM, Ai J, Arnaiz O, Baran J, Blake A, Baldock R, Chelala C, Croft D, Cros A, Cutts RJ, Di Genova A, Forbes S, Fujisawa T, Gadaleta E, Goodstein DM, Gundem G, Haggarty B, Haider S, Hall M, Harris T, Haw R, Hu S, Hubbard S, Hsu J, Iyer V, Jones P, Katayama T, Kinsella R, Kong L, Lawson D, Liang Y, Lopez-Bigas N, Luo J, Lush M, Mason J, Moreews F, Ndegwa N, Oakley D, Perez-Llamas C, Primig M, Rivkin E, Rosanoff S, Shepherd R, Simon R, Skarnes B, Smedley D, Sperling L, Spooner W, Stevenson P, Stone K, Teague J, Wang J, Wang J, Whitty B, Wong DT, Wong-Erasmus M, Yao L, Youens-Clark K, Yung C, Zhang J, Kasprzyk A. BioMart Central Portal: an open database network for the biological community. *Database (Oxford)*. 2011:bar041. [PubMed: 21930507]
- Hegele RA, Busch CP, Young TK, Connelly PW, Cao H. Mannose-binding lectin gene variation and cardiovascular disease in Canadian Inuit. *Clin Chem*. 1999; 54:1283–1285. [PubMed: 10430797]
- Hegele RA, Young TK, Connelly PW. Are Canadian Inuit at increased risk for coronary heart disease? *J Mol Med*. 1997; 74:364–370. [PubMed: 9181478]
- Jasinska M, Owczarek J, Orszulak-Michalak D. Statins a new insight into their mechanisms of action and consequent pleiotropic effects. *Pharmacol Rep*. 2007; 59:483–499. [PubMed: 18048949]
- Kirichenko AV, Belonogova NM, Aulchenko YS, Axenovich TI. PedStr software for cutting large pedigrees for haplotyping, IBD computation and multipoint linkage analysis. *Ann Hum Genet*. 2009; 73:527–531. [PubMed: 19604226]
- Köhler S, Bauer S, Horn D, Robinson PN. Walking the interactome for prioritization of candidate disease genes. *Am J Hum Genet*. 2008; 82:949–958. [PubMed: 18371930]
- Kutuk O, Basaga H. Inflammation meets oxidation: NF-kappaB as a mediator of initial lesion development in atherosclerosis. *Trends Mol Med*. 2003; 9:549–557. [PubMed: 14659470]
- Lemas, DJ.; Klimentidis, YC.; Wiener, HW.; O'Brien, DM.; Hopkins, S.; Allison, DB.; Fernandez, JR.; Tiwari, HK.; Boyer, BB. Obesity polymorphisms identified in genome-wide association studies interact with n-3 polyunsaturated fatty acid intake and modify the genetic associations with adiposity phenotypes in Yup'ik people. *Genes Nut*. 2013. in press
- Lemas DJ, Wiener HW, O'Brien DM, Hopkins S, Stanhope KL, Havel PJ, Allison DB, Fernandez JR, Tiwari HK, Boyer BB. Genetic polymorphisms in carnitine palmitoyltransferase 1A gene are associated with variation in body composition and fasting lipid traits in Yup'ik Eskimos. *J Lipid Res*. 2012; 53:175–184. [PubMed: 22045927]

- Li J, Ji L. Adjusting multiple testing in multilocus analyses using the eigenvalues of a correlation matrix. *Heredity*. 2005; 95:221–227. [PubMed: 16077740]
- Mohatt GV, Plaetke R, Klejka J, Luick B, Lardon C, Bersamin A, Hopkins S, Dondanville M, Herron J, Boyer B. Center for Alaska Native Health Research. The Center for Alaska Native Health Research Study: a community-based participatory research study of obesity and chronic disease-related protective and risk factors. *Int J Circumpolar Health*. 2007; 66:8–18. [PubMed: 17451130]
- Narayanan ML, Schraer CD, Bulkow LR, Koller KR, Asay E, Mayer AM, Raymer TW. Diabetes prevalence, incidence, complications and mortality among Alaska Native people 1985–2006. *Int J Circumpolar Health*. 2010; 69:236–252. [PubMed: 20501061]
- Nash SH, Bersamin A, Kristal AR, Hopkins SE, Church RS, Pasker RL, Luick BR, Mohatt GV, Boyer BB, O'Brien DM. Stable nitrogen and carbon isotope ratios indicate traditional and market food intake in an indigenous circumpolar population. *J Nutr*. 2012; 142:84–90. [PubMed: 22157543]
- Naylor JL, Schraer CD, Mayer AM, Lanier AP, Treat CA, Murphy NJ. Diabetes among Alaska Natives: a review. *Int J Circumpolar Health*. 2003; 62:363–387. [PubMed: 14964764]
- Ntzani EE, Kawoura FK. Genetic risk factors for type 2 diabetes: insights from the emerging genomic evidence. *Curr Vasc Pharmacol*. 2012; 10:147–155. [PubMed: 22239624]
- Nyholt DR. A simple correction for multiple testing for single-nucleotide polymorphisms in linkage disequilibrium with each other. *Am J Hum Genet*. 2004; 74:765–769. [PubMed: 14997420]
- O'Brien DM, Kristal AR, Jeannet MA, Wilkinson MJ, Bersamin A, Luick B. Red blood cell ¹⁵N: a novel biomarker of dietary eicosapentaenoic acid and docosahexaenoic acid intake. *Am J Clin Nutr*. 2009; 89:913–919. [PubMed: 19176727]
- O'Connell JR, Weeks DE. PedCheck: a program for identification of genotype incompatibilities in linkage analysis. *Am J Hum Genet*. 1998; 63:259–266. [PubMed: 9634505]
- Park SH, Lee JY, Kim S. A methodology for multivariate phenotype-based genome-wide association studies to mine pleiotropic genes. *BMC Syst Biol*. 2011; 5(Suppl 2):S13. [PubMed: 22784570]
- Plaetke R, Balbi F. PedMerge: merging pedigrees to facilitate family-based genetic statistical analyses. *Bioinformatics*. 2010; 26:2790–2791. [PubMed: 20843958]
- Price AL, Patterson NJ, Plenge RM, Weinblatt ME, Shadick NA, Reich D. Principal components analysis corrects for stratification in genome-wide association studies. *Nat Genet*. 2006; 38:904–909. [PubMed: 16862161]
- Rinaldo A, Bacanu SA, Devlin B, Sonpar V, Wasserman L, Roeder K. Characterization of multilocus linkage disequilibrium. *Genet Epidemiol*. 2005; 28:193–206. [PubMed: 15637716]
- Risch N, Merikangas K. The future of genetic studies of human complex diseases. *Science*. 1996; 273:1516–1517. [PubMed: 8801636]
- Risica PM, Ebbeson SOE, Schraer CD, Nobmann ED, Caballero BH. Body fat distribution in Alaskan Eskimos of the Bering Straits region: the Alaska Siberia Project. *Int J Obes*. 2000; 24:171–179.
- Rudkowska, I.; Dewailly, E.; Hegele, RA.; Boiteau, V.; Dube-Linteau, A.; Abdous, B.; Giguere, Y.; Chateau-Degat, ML.; Vohl, MC. Gene-diet interactions on plasma levels in the Inuit population. *Br J Nutr*. 2012. in press
- Teslovich TM, Musunuru K, Smith AV, Edmondson AC, Stylianou IM, Koseki M, Pirruccello JP, Ripatti S, Chasman DI, Willer CJ, Johansen CT, Fouchier SW, Isaacs A, Peloso GM, Barbalic M, Ricketts SL, Bis JC, Aulchenko YS, Thorleifsson G, Feitosa MF, Chambers J, Orho-Melander M, Melander O, Johnson T, Li X, Guo X, Li M, Shin Cho Y, Jin Go M, Jin Kim Y, Lee JY, Park T, Kim K, Sim X, Twee-Hee Ong R, Croteau-Chonka DC, Lange LA, Smith JD, Song K, Hua Zhao J, Yuan X, Luan J, Lamina C, Ziegler A, Zhang W, Zee RY, Wright AF, Witteman JC, Wilson JF, Willemsen G, Wichmann HE, Whitfield JB, Waterworth DM, Wareham NJ, Waeber G, Vollenweider P, Voight BF, Vitart V, Uitterlinden AG, Uda M, Tuomilehto J, Thompson JR, Tanaka T, Surakka I, Stringham HM, Spector TD, Soranzo N, Smit JH, Sinisalo J, Silander K, Sijbrands EJ, Scuteri A, Scott J, Schlessinger D, Sanna S, Salomaa V, Saharinen J, Sabatti C, Ruokonen A, Rudan I, Rose LM, Roberts R, Rieder M, Psaty BM, Pramstaller PP, Pichler I, Perola M, Penninx BW, Pedersen NL, Pattaro C, Parker AN, Pare G, Oostra BA, O'Donnell CJ, Nieminen MS, Nickerson DA, Montgomery GW, Meitinger T, McPherson R, McCarthy MI, McArdle W, Masson D, Martin NG, Marroni F, Mangino M, Magnusson PK, Lucas G, Luben R, Loos RJ, Lokki ML, Lettre G, Langenberg C, Launer LJ, Lakatta EG, Laaksonen R, Kyvik KO,

Kronenberg F, König IR, Khaw KT, Kaprio J, Kaplan LM, Johansson A, Jarvelin MR, Janssens AC, Ingelsson E, Igl W, Kees Hovingh G, Hottenga JJ, Hofman A, Hicks AA, Hengstenberg C, Heid IM, Hayward C, Havulinna AS, Hastie ND, Harris TB, Haritunians T, Hall AS, Gyllensten U, Guiducci C, Groop LC, Gonzalez E, Gieger C, Freimer NB, Ferrucci L, Erdmann J, Elliott P, Ejebe KG, Döring A, Dominiczak AF, Demissie S, Deloukas P, de Geus EJ, de Faire U, Crawford G, Collins FS, Chen YD, Caulfield MJ, Campbell H, Burt NP, Bonnycastle LL, Boomsma DI, Boekholdt SM, Bergman RN, Barroso I, Bandinelli S, Ballantyne CM, Assimes TL, Quertermous T, Altshuler D, Seielstad M, Wong TY, Tai ES, Feranil AB, Kuzawa CW, Adair LS, Taylor HA Jr, Borecki IB, Gabriel SB, Wilson JG, Holm H, Thorsteinsdottir U, Gudnason V, Krauss RM, Mohlke KL, Ordovas JM, Munroe PB, Kooner JS, Tall AR, Hegele RA, Kastelein JJ, Schadt EE, Rotter JJ, Boerwinkle E, Strachan DP, Mooser V, Stefansson K, Reilly MP, Samani NJ, Schunkert H, Cupples LA, Sandhu MS, Ridker PM, Rader DJ, van Duijn CM, Peltonen L, Abecasis GR, Boehnke M, Kathiresan S. Biological, clinical, and population relevance of 95 loci for blood lipids. *Nature*. 2010; 466:707–713. [PubMed: 20686565]

- Tranchevent L-C, Barriot R, Yu S, Van Vooren S, Van Loo P, Coessens B, De Moor B, Aerts S, Moreau Y. ENDEAVOUR update: a web resource for gene prioritization in multiple species. *Nucleic Acids Res*. 2008; 36:W377–384. [PubMed: 18508807]
- Voruganti VS, Cai G, Cole SA, Freeland-Graves JH, Laston S, Wenger CR, MacCluer JW, Dyke B, Devereux R, Ebbesson SO, Fabsitz RR, Howard BV, Comuzzie AG. Common set of genes regulates low-density lipoprotein size and obesity-related factors in Alaskan Eskimos: results from the GOCADAN study. *Am J Hum Biol*. 2006; 18:525–531. [PubMed: 16788905]
- Voruganti VS, Diego VP, Haack K, Cole SA, Blangero J, Goring HH, Laston S, Wenger CR, Ebbesson SO, Fabsitz RR, Devereux R, Howard BV, Umans JG, MacCluer JW, Comuzzie AG. A QTL for genotype by sex interaction for anthropometric measurements in Alaskan Eskimos (GOCADAN Study) on chromosome 19q12-13. *Obesity (Silver Spring)*. 2011; 19:1840–1846. [PubMed: 21527897]
- Winkler TW, Croteau-Chonka DC, Ferreira T, Fischer K, Locke AE, Magi R, Shungin D, Workalemahu T, Wu J, Day F, Jackson AU, Justice A, Strawbridge R, Volzke H, Qi L, Zillikens MC, Fox CS, Speliotes EK, Barroso I, Ingelsson E, Hirschhorn JN, McCarthy MI, Franks PW, Morris AP, Cupples LA, North KE, Mohlke KL, Loos RJJ, Heid IM, Lindgren CM, GIANT Consortium. Genome-wide association meta-analyses in over 210,000 individuals identify 20 sexually dimorphic genetic variants for body fat distribution. *Annual Meeting of the American Society for Human Genetics*. 2012
- Wu Z, Li Y, Li X, Ti D, Zhao Y, Si Y, Mei Q, Zhao P, Fu X, Han W. LRP16 integrates into NF- κ B transcriptional complex and is required for its functional activation. *PLoS ONE*. 2011; 6:e18157. [PubMed: 21483817]
- Yan TT, Yin RX, Li Q, Huang P, Zeng XN, Huang KK, Aung LH, Wu DF, Liu CW, Pan SL. Sex-specific association of rs16996148 SNP in the NCAN/CILP2/PBX4 and serum lipid levels in the Mulao and Han populations. *Lipid Health Dis*. 2011; 10:248.
- Yu W, Gwinn M, Clyne M, Yesupriya A, Khoury MJ. A navigator for human genome epidemiology. *Nat Genet*. 2008; 40:124–125. [PubMed: 18227866]
- Zhou L, Ding H, Zhang X, He M, Huang S, Xu Y, Shi Y, Cui G, Cheng L, Wang QK, Hu FB, Wang D, Wu T. Genetic variants at newly identified lipid loci are associated with coronary heart disease in a Chinese Han population. *PLoS ONE*. 2011; 6:e27481. [PubMed: 22110658]

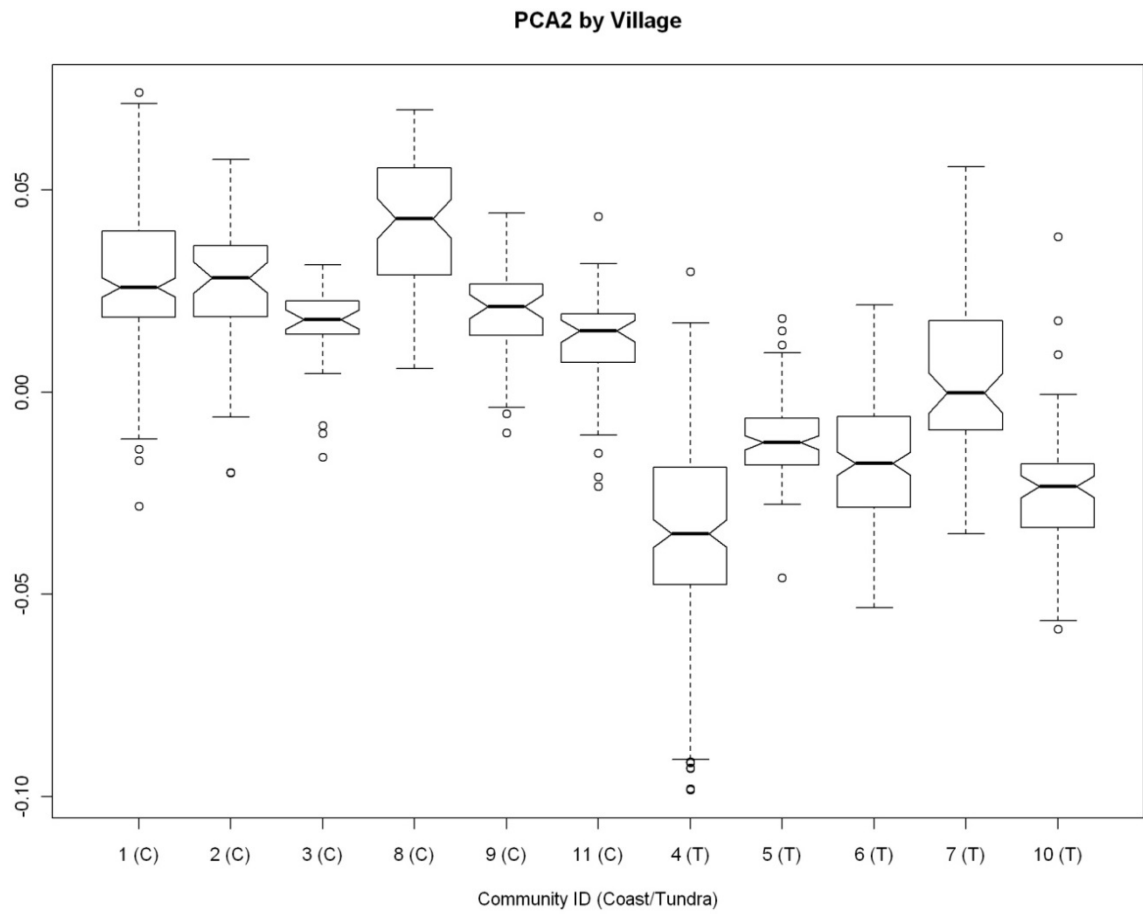
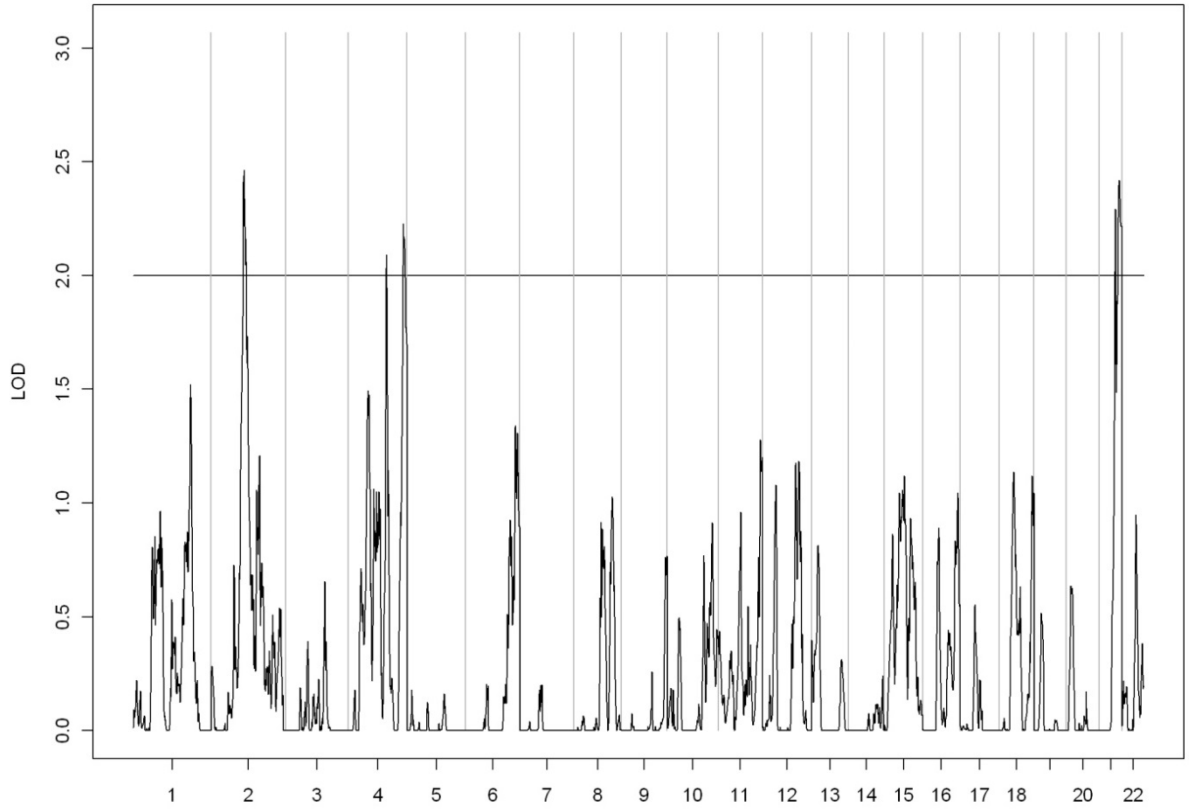


Figure 1.
Distribution of second principal component of ancestry by village.

Linkage Results for ApoA2

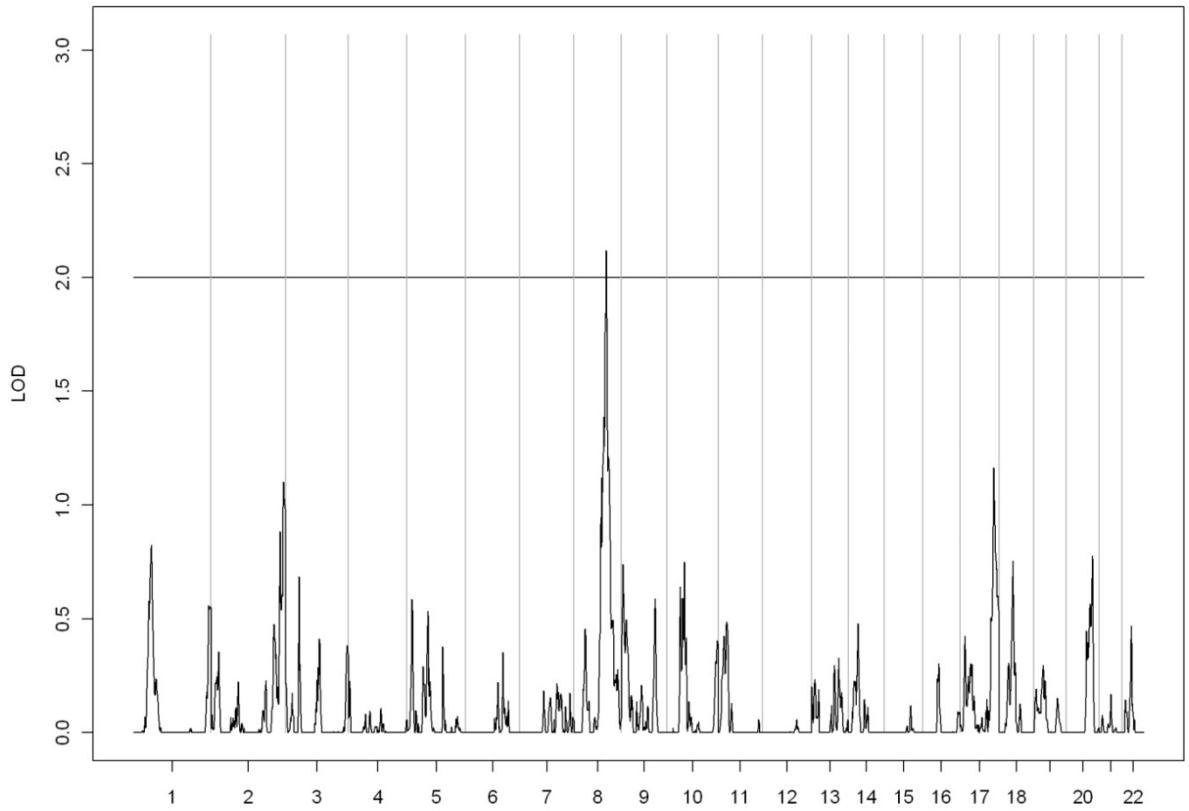


NIH-PA Author Manuscript

NIH-PA Author Manuscript

NIH-PA Author Manuscript

Linkage Results for Insulin

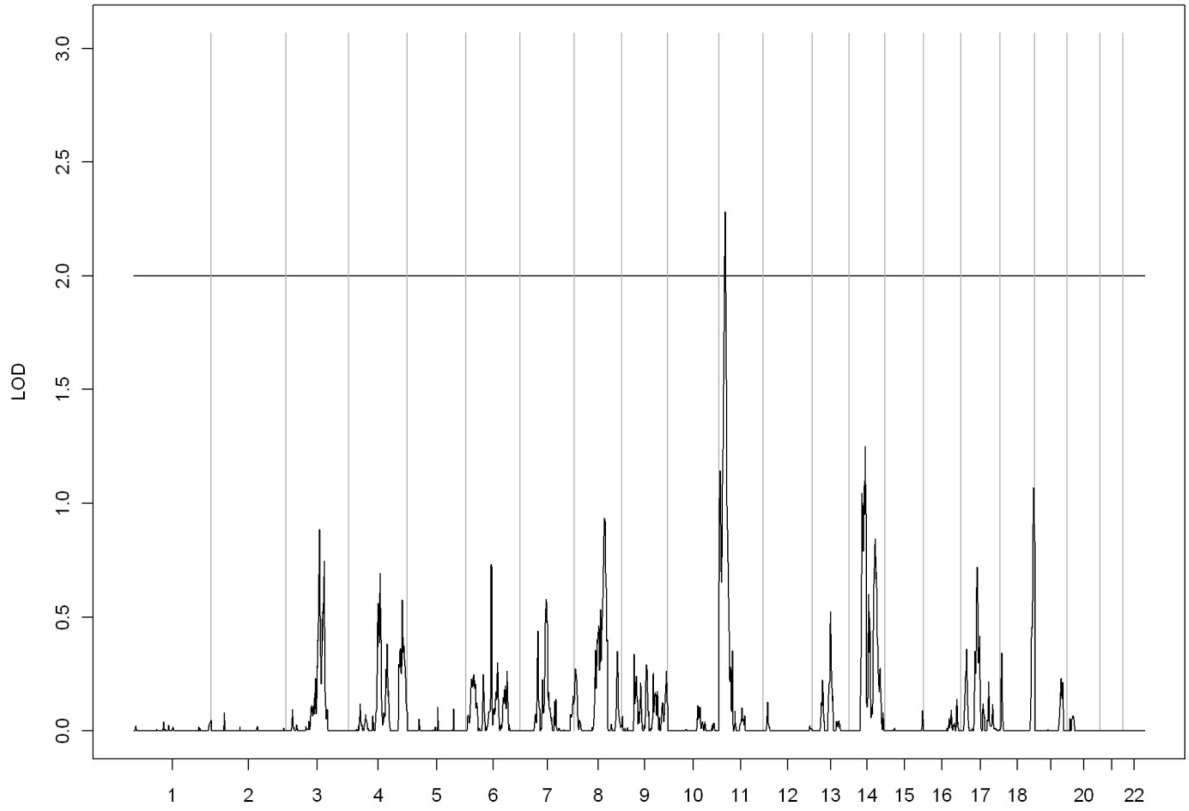


NIH-PA Author Manuscript

NIH-PA Author Manuscript

NIH-PA Author Manuscript

Linkage Results for HbA1c

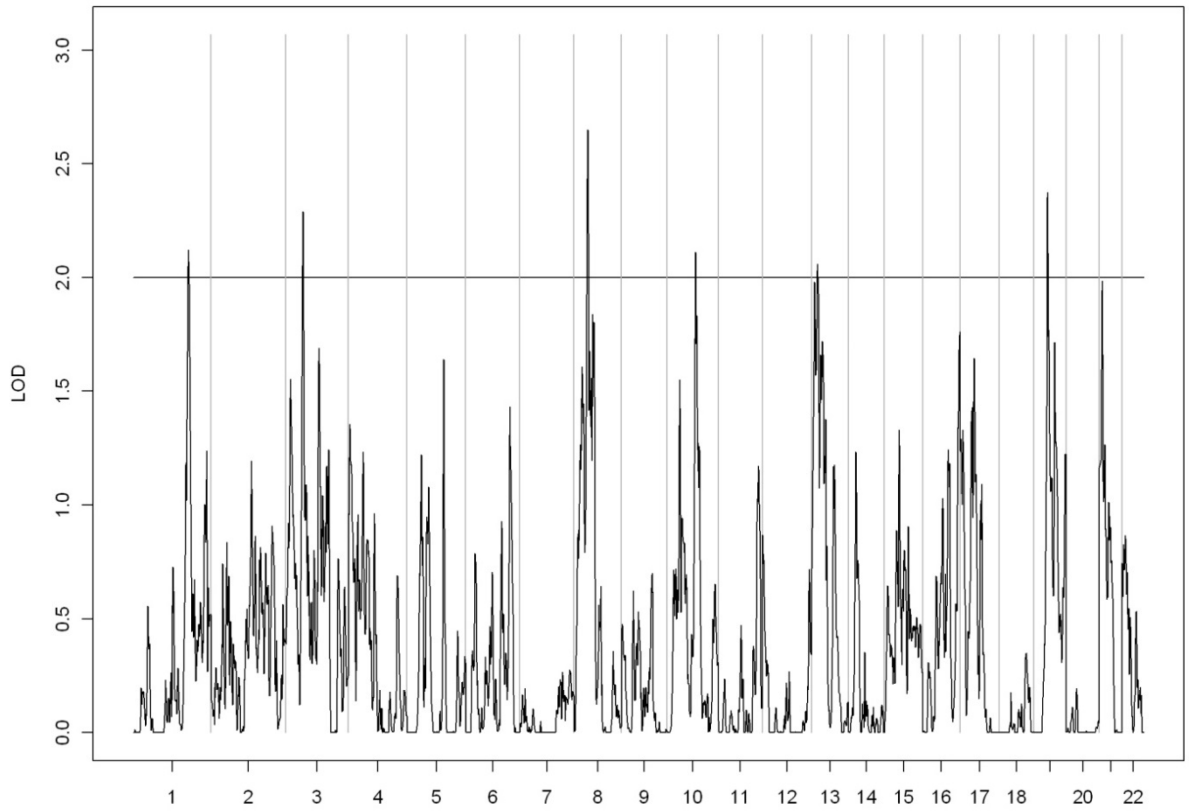


NIH-PA Author Manuscript

NIH-PA Author Manuscript

NIH-PA Author Manuscript

Linkage Results for HDL

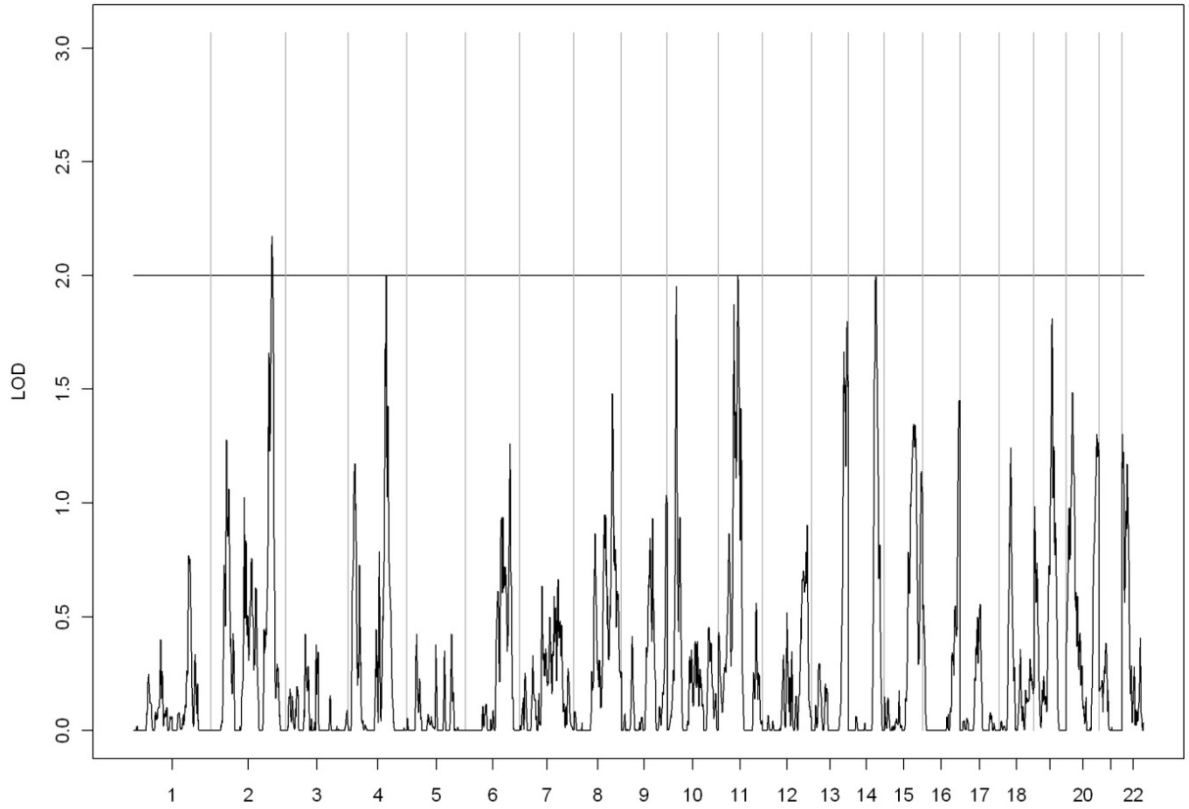


NIH-PA Author Manuscript

NIH-PA Author Manuscript

NIH-PA Author Manuscript

Linkage Results for Lab Cholesterol

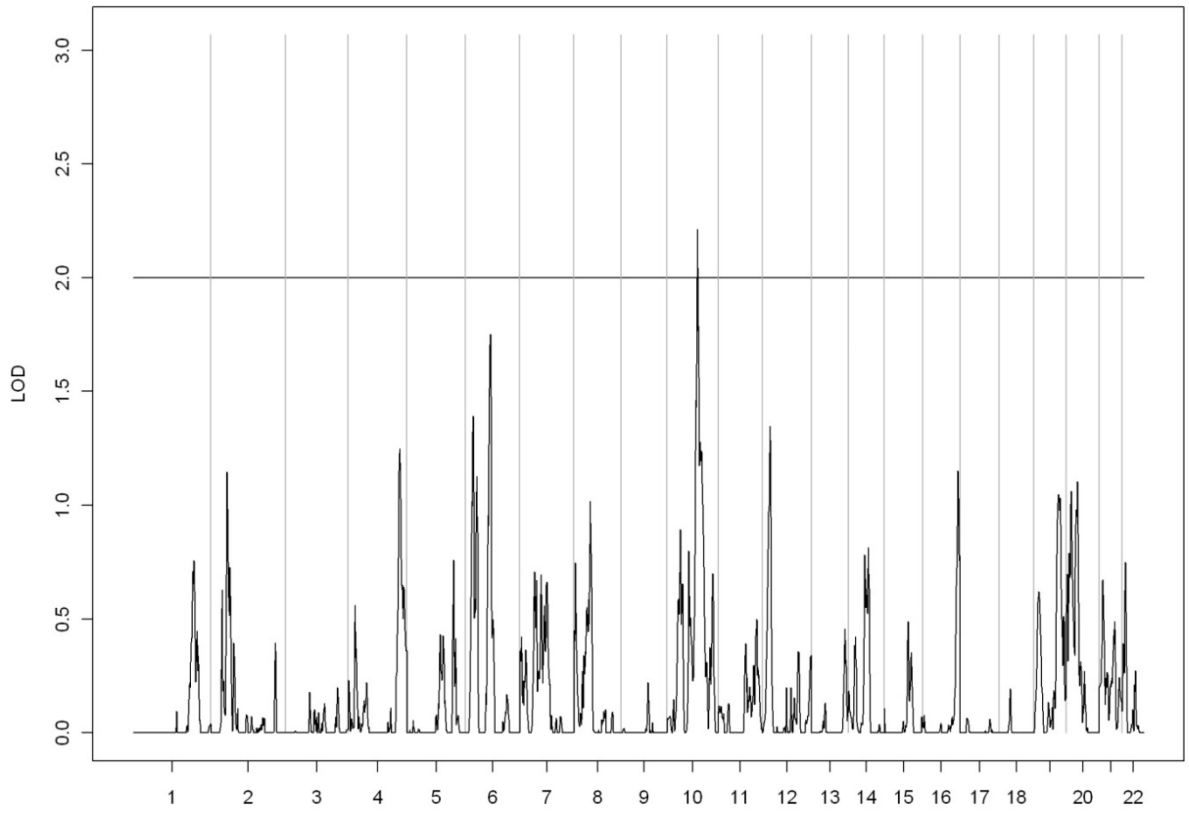


NIH-PA Author Manuscript

NIH-PA Author Manuscript

NIH-PA Author Manuscript

Linkage Results for Lab Triglycerides



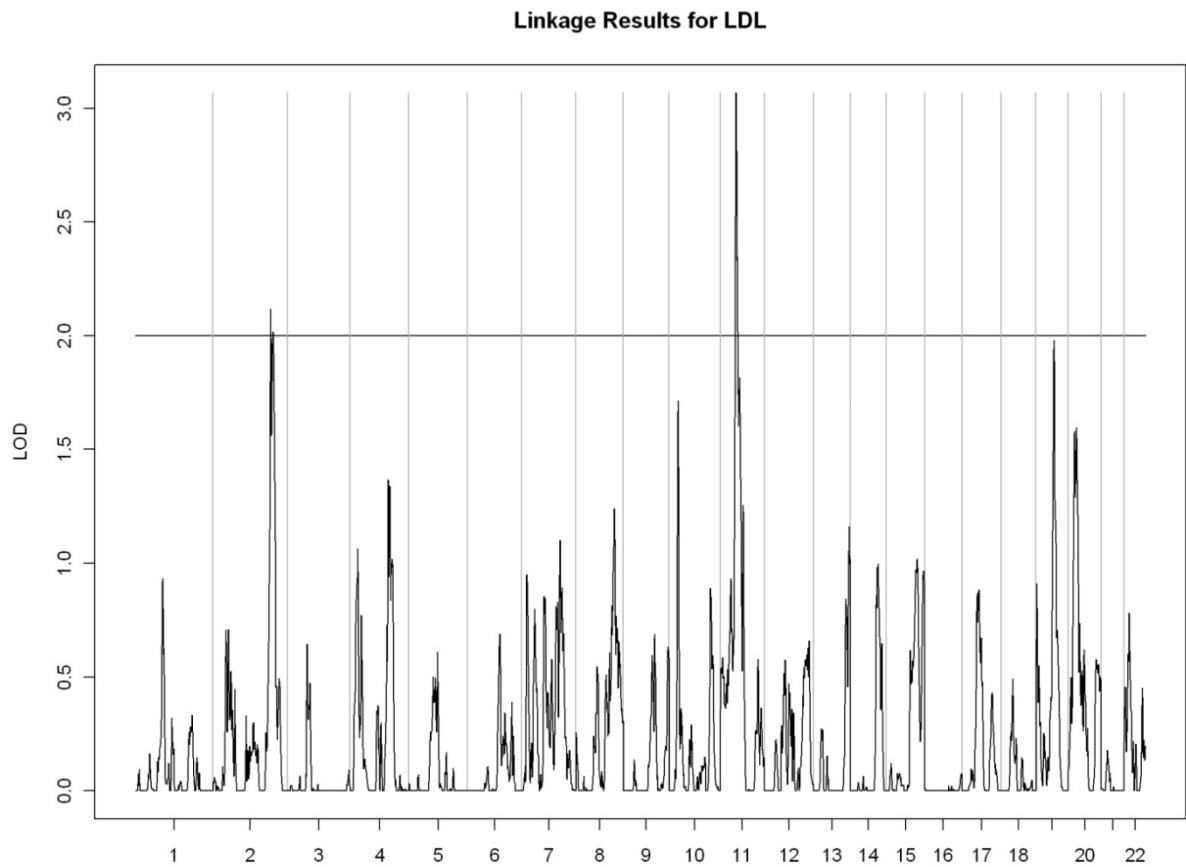


Figure 2.

Genome-wide linkage scans for selected metabolic traits in Yup'ik people. The X-axis shows the chromosomal location, and the Y-axis displays the LOD score.

- A) Apolipoprotein A2
- B) Fasting insulin
- C) Glycosylated hemoglobin
- D) High-density lipoprotein cholesterol
- E) Total cholesterol
- F) Triglycerides
- G) Low-density lipoprotein cholesterol

Table 1

Number of pairs of study participants by degree of relationship.

Degree of Relation	Original Large Pedigree	Resulting Cut Pedigrees	Remaining Small pedigrees
First	1149	1040	24
Second	1784	1011	13
Third	2363	777	2
Fourth	2489	399	2
Fifth	2236	121	1
Sixth	1533	31	-
Seventh	999	18	-
Eighth	447	4	-
Ninth	88	3	-

Table 2Heritability estimates of metabolic trait measurements.¹

	Residual Kurtosis	h²	P
ApoA1	0.03	0.59	2×10 ⁻²²
ApoA2	1.65	0.42	1×10 ⁻⁹
Fasting glucose	1.65	0.24	3×10 ⁻⁵
HbA1C	1.39	0.31	6×10 ⁻⁷
HDL cholesterol	0.13	0.44	7×10 ⁻¹⁴
Fasting insulin	2.49	0.15	0.006
LDL cholesterol	0.79	0.40	2×10 ⁻¹¹
Total cholesterol	0.63	0.32	7×10 ⁻⁹
Triglycerides	0.10	0.45	3×10 ⁻¹³
VLDL cholesterol	0.08	0.43	9×10 ⁻¹³

¹ ApoA1, apolipoprotein A1; ApoA2, apolipoprotein A2; HbA1C, glycosylated hemoglobin; HDL, high density lipoprotein; LDL, low density lipoprotein; VLDL, very low density lipoprotein

Table 3

Descriptive characteristics of the study population (n=982).

	Men (n=454) ¹	Women (n=528) ¹	P
Age, years	36 (35-38)	38 (37-40)	0.07 ²
Community group, n			
Coastal	214 (51)	204 (49)	0.63 ³
Upriver	240 (43)	324 (57)	0.0004 ³
¹⁵ N, ‰	8.8 (8.7-8.9)	9.2 (9.1-9.3)	0.0001 ²
ApoA1, mg/dL	167 (117-217)	177 (128-225)	<0.0001 ²
ApoA2, mg/dL	27 (18-37)	26 (17-36)	0.001 ²
Fasting glucose, mg/dL	97 (75-118)	95 (74-115)	0.006 ²
HbA1C, mmol/mol	37.7 (29.9-44.8)	37.7 (28.5-46.1)	0.04 ²
HDL cholesterol, mg/dL	54 (33-89)	62 (37-105)	<0.0001 ²
Fasting insulin, mU/L	16 (4-28)	19 (5-34)	<0.0001 ²
LDL cholesterol, mg/dL	137 (58-216)	136 (63-209)	0.77 ²
Total cholesterol, mg/dL	210 (115-304)	217 (129-306)	0.01 ²
Triglycerides, mg/dL	121 (35-207)	115 (38-192)	0.43 ²
VLDL cholesterol, mg/dL	24 (7-42)	23 (8-39)	0.57 ²
Body mass index, kg/m ²	26 (18-36)	28 (18-44)	<0.0001 ²
Body fat, ‰	21 (6-36)	35 (18-53)	<0.0001 ³
Abdominal skinfold thickness, mm	15 (4-62)	29 (12-72)	<0.0001 ²

¹Mean (95% confidence interval) for continuous variables or n (% total) for categorical variables

²P calculations are based on the 2-sample t-test, not accounting for the family structure.

³P calculations are based on the binomial distribution, not accounting for the family structure.

Table 4

Linkage peaks exceeding LOD score of 2.

Chromosome Bands	Peak LOD Score	Start SNP	Start	End SNP	End	
			Position ¹		Position ¹	
ApoA2						
2p11.2-2q14.2	2.46	rs1015117	86,594,374	rs280192	121,453,668	
4q28.3-4q31.21	2.09	rs1992695	138,031,197	rs336332	143,249,272	
4q35.1-4q35.2	2.23	rs1158465	186,706,487	rs1915852	191,026,530	
21q22.3	2.42	rs4920106	42,748,803	rs2256207	46,886,508	
Fasting Insulin						
8q22.3-8q23.3	2.12	rs718262	103,045,180	rs1353277	116,148,616	
HbA1C						
11p15.4-11p15.1	2.28	rs1425151	10,644,793	rs214101	17,245,930	
HDL cholesterol						
1q31.3-1q32.1	2.12	rs1538686	194,664,442	rs4351714	201,027,281	
3p22.3-3p22.1	2.42	rs4796	32,498,781	rs1996562	40,110,750	
8p21.2-8p12	2.65	rs310319	23,746,576	rs8685	33,477,812	
10q23.1-10q23.2	2.72	rs720262	82,462,543	rs10887683	88,706,557	
13q12.13-13q12.3	2.06	rs306395	25,348,564	rs717651	30,070,594	
19p13.11-19q12	2.37	rs7250192	18,584,325	rs2194198	36,728,531	
LDL cholesterol						
2q34-2q36.1	2.12	rs1396828	210,753,727	rs1463991	221,411,990	
11p13-11q13.1	3.02	rs2045040	34,575,332	rs633727	64,416,000	
Total cholesterol						
2q35-2q36.1	2.27	rs207928	216,744,686	rs348971	222,626,435	
4q28.3-4q31.1	2.00	rs13103412	136,871,469	rs6840033	141,448,311	
11q12.2-11q13.2	2.00	rs1530354	59,957,022	rs1695	67,109,265	
Triglycerides						
10q23.1-10q23.33	2.21	rs489466	84,638,946	rs2298037	96,736,068	

¹Position was determined using hg18 as the reference genome.

Table 5

Significant associations between single nucleotide polymorphisms within linkage peaks and metabolic traits in the study population.

Trait	SNP	Chromosome	Gene	<i>P</i> (Add) ¹	<i>P</i> (Full) ²	<i>P</i> (Int) ³
ApoA2	rs1317423	4	--	0.0009	0.009	0.48
HDL	rs713144	3	--	0.002	0.01	0.38
	rs2475793	10	<i>NRG3</i>	0.0003	0.006	0.63
	rs535534	13	<i>POLR1D</i>	0.001	0.005	0.24
	rs2194198	19	--	0.0009	0.001	0.50
Total cholesterol	rs728919	11	<i>NAA40</i>	0.003	0.06	0.97
	rs562865	11	<i>MACROD1</i>	0.003	0.06	0.94

¹Model included sex, age, n-3 PUFA intake, community group, and additive genetic term.

²Model included all terms listed above plus an interaction between the additive genotype and n-3 PUFA intake.

³*P*-value from the likelihood ratio test for interaction between the additive genotype and n-3 PUFA intake.