

# UC Davis

## UC Davis Previously Published Works

### Title

Small predators dominate fish predation in coral reef communities

### Permalink

<https://escholarship.org/uc/item/8tf9t1d6>

### Journal

PLOS Biology, 20(11)

### ISSN

1544-9173

### Authors

Mihalitsis, Michalis

Morais, Renato A

Bellwood, David R

### Publication Date

2022

### DOI

10.1371/journal.pbio.3001898

### Copyright Information

This work is made available under the terms of a Creative Commons Attribution License, available at <https://creativecommons.org/licenses/by/4.0/>

Peer reviewed

## SHORT REPORTS

## Small predators dominate fish predation in coral reef communities

Michalis Mihalitsis<sup>1,2,3,4\*</sup>, Renato A. Morais<sup>1,2,3</sup>, David R. Bellwood<sup>1,2,3</sup>

**1** Research Hub for Coral Reef Ecosystem Functions, James Cook University, Townsville, Queensland, Australia, **2** College of Science and Engineering, James Cook University, Townsville, Queensland, Australia, **3** Australian Research Council Centre of Excellence for Coral Reef Studies, James Cook University, Townsville, Queensland, Australia, **4** Department of Evolution and Ecology, University of California, Davis, California, United States of America

\* [mmihalitsis@ucdavis.edu](mailto:mmihalitsis@ucdavis.edu)

## Abstract

Ecosystem processes are challenging to quantify at a community level, particularly within complex ecosystems (e.g., rainforests, coral reefs). Predation is one of the most important types of species interactions, determining several ecosystem processes. However, while it is widely recognised, it is rarely quantified, especially in aquatic systems. To address these issues, we model predation on fish by fish, in a hyperdiverse coral reef community. We show that body sizes previously examined in fish–fish predation studies (based on a meta-analysis), only represent about 5% of likely predation events. The average fish predator on coral reefs is just 3.65 cm; the average fish prey just 1.5 cm. These results call for a shift in the way we view fish predation and its ability to shape the species or functional composition of coral reef fish communities. Considered from a functional group approach, we found general agreement in the distribution of simulated and observed predation events, among both predator and prey functional groups. Predation on coral reefs is a process driven by small fish, most of which are neither seen nor quantified.

## OPEN ACCESS

**Citation:** Mihalitsis M, Morais RA, Bellwood DR (2022) Small predators dominate fish predation in coral reef communities. *PLoS Biol* 20(11): e3001898. <https://doi.org/10.1371/journal.pbio.3001898>

**Academic Editor:** Pedro Jordano, Estacion Biologica de Doñana CSIC, SPAIN

**Received:** June 16, 2022

**Accepted:** October 31, 2022

**Published:** November 29, 2022

**Copyright:** © 2022 Mihalitsis et al. This is an open access article distributed under the terms of the [Creative Commons Attribution License](https://creativecommons.org/licenses/by/4.0/), which permits unrestricted use, distribution, and reproduction in any medium, provided the original author and source are credited.

**Data Availability Statement:** All relevant data are available in the Zenodo data repository, under the DOI: [10.5281/zenodo.6772154](https://doi.org/10.5281/zenodo.6772154).

**Funding:** Supported by the Lizard Island Reef Research Foundation (Doctoral Fellowship to RAM) and the Australian Research Council (FL190100062 to DRB). The funders had no role in study design, data collection and analysis, decision to publish, or preparation of the manuscript.

**Competing interests:** The authors have declared that no competing interests exist.

## Introduction

For many animals and plants in high diversity systems, such as coral reefs, population dynamics are driven by early life stage mortality, with recruitment functioning as a population bottleneck [1–3]. Indeed, predation-based mortality is widely regarded as one of the most important species interactions determining fish population structures on coral reefs [4–6]. On reefs, many, if not most fishes, are eaten by other fishes (7). While the consequences of high mortality in these ecosystems is well documented [8,9], the predators that drive this process are largely unknown.

In the last few years, the main focus of fish predation studies on coral reefs has been on trophic cascades [10–13], its effects on prey abundance [14,15], or indirect “fear-effects” on prey behaviour [16–19]. The fish predators investigated in these fields were primarily sharks or other large mesopredators. However, recent work has highlighted the potential trophic importance of small-bodied coral reef fishes [20,21]. This raises questions over the identity and size

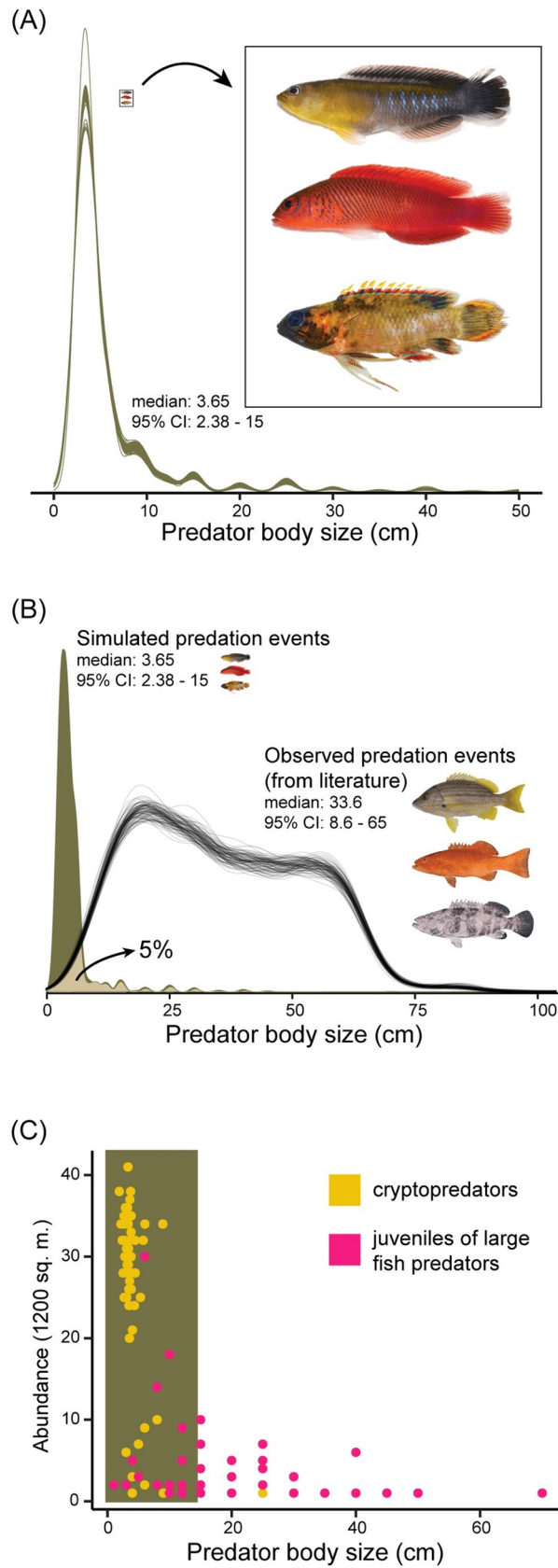
of fish predators and their relative importance from an ecosystem function perspective. Basically, big questions still remain: Who are the main predators of fishes on coral reefs? At which size does most predation happen? And, while all individuals in a community go through the predation gauntlet, how do these interactions scale at a community level?

Indeed, quantifying fish predation at a community level poses some challenges. Generally, fish–fish predation has been quantified through gut content analyses [7,22,23]. However, this analysis requires a high number of specimens for a small yield of data, as most often, piscivore guts are empty [24,25]. While fish–fish predation is widely acknowledged, it is logistically challenging to quantify in situ, given the duration of these events only lasting few milliseconds [26,27]. Furthermore, many predator–prey estimates are based on length–length relationships. However, especially within coral reef fishes, body depth (and therefore a determinant of gape limitation [28]) is a primary axis of variation [29,30]; assuming predator–prey relationships based on length, risks the loss of significant variation in the data. Lastly, approaches incorporating species abundance alone, may lead to the loss of information on the ontogenetic history of fishes (for example, a juvenile predator is also prey during its early life stages), or, to incorrect estimates of interaction rates (i.e., presence does not always equate to function) [31]. Therefore, for the reasons above, there is a need to quantify predation events at a community level, using a different approach.

Given the recent advances in, and promising results from, a functional group approach [32] to the investigation of ecosystem processes [33–35], we apply this approach to coral reef fishes, with a particular focus on predation on fishes, by fishes. We first surveyed a coral reef fish community and constructed an algorithm to model predator–prey interactions based on the functional constraints imposed by both predators and prey (following [36,37]). Predators were classified by their functional group (grabbers versus engulfers) and size, while prey were classified by body depth (which determines the size of predators able to feed on them) and prey functional group (cryptobenthic, epibenthic, social) [36]. This produced a standardised surveyed community of 32,218 fish that were simulated 1 million times to produce 349,000 potential predation events (i.e., functionally viable events, by removing forbidden interactions [38,39]). These results were then compared to the documented consumption of reef fish prey by fish predators, based on a meta-analysis of gut content data ( $n = 1,677$  predation events) across Indo-Pacific coral reef ecosystems.

## Results

We found that fish predation on coral reefs is overwhelmingly dominated by small, diminutive predators. The average fish predator that feeds on other fish on reefs is just 3.6 cm, and the average prey just 1.5 cm. By combining surveys at different spatial scales, to generate as complete a census as possible, our standardised surveyed reef fish community contained 32,218 fishes from 266 species. Simulating 1 million potential predator–prey interactions (i.e., predation events) within this community, by applying size-based functional constraints (prey body depth/predator gape size), we obtained 349,081 potential (i.e., functionally feasible) predation events. In this extensive pool of potential events, the median size of a predator fish was just 3.65 cm (95% CI: 2.38 to 15) total length (TL) (mean: 5.6 cm) (Fig 1A). Essentially, 95% of potential predation events involve predators less than 15 cm. When simulated predation events from our surveyed community were compared to a literature-based dataset of 1,677 observed predation events, by size, there was only 5% overlap (Fig 1B). In essence, the vast majority of studies have exclusively quantified predation by exceptionally large predators; most predation events go unobserved and unrecorded. Our results suggest there is a need for a shift in the way



**Fig 1. Cryptopredators, not “large” reef fishes, dominate predation events on coral reefs.** (A) Community-level predation of coral reef fishes, along a predator size gradient, based on simulations from reef surveys. Examples of cryptopredators that likely shape community composition in coral reef ecosystems, top to bottom: *Pseudochromis cyanotaenia*, *Cypho purpurascens*, *Plesiops* sp. (B) Predation events simulated from our surveyed community (same as (A)) vs. observed predation events (metanalysis of literature). Multiple lines in observed predation events reflect draws from a distribution (see [Materials and methods](#)). (C) Abundance estimates of cryptopredator species, relative to juveniles of “large” reef fish predator species. The coloured box represents the size range within which most predation events are estimated. Original photographs for clipart in (A) were originally sourced from C.R. Hemingson, with permission. Original photos for clipart in (B) were taken by J.E. Randall and sourced from [40]. The data underlying this figure can be found in DOI: [10.5281/zenodo.6772154](https://doi.org/10.5281/zenodo.6772154).

<https://doi.org/10.1371/journal.pbio.3001898.g001>

we consider fish predation, and how trophic interactions shape the species, and functional, composition of coral reef fish communities.

While exponentially declining mortality rates appear to be the norm for reef fishes [8,9,41], the predators that drive these curves have remained largely unknown. Our results emphasize the small size of these predators. Furthermore, based on abundance-based encounter likelihoods, these predators are unlikely to be juveniles of “large” reef fish predators; the predators driving the process are predominantly cryptopredators (Fig 1C), defined herein as carnivorous fishes below 10 cm.

The same patterns apply to prey fish. The estimated median size of prey fish was just 1.5 cm TL (95% CI: 0.8 to 3.65) (mean: 1.75 cm) (Fig 2A); 95% of potential predation events involve prey sizes less than 3.65 cm. Functionally feasible predation events were simulated based on prey body depth versus gape size relationships. These simulations resulted in 349,081 functionally feasible predation events. Of these events, the prey involved were: 90.4% cryptobenthic substratum dwellers (referred to hereafter as cryptobenthic), 8.4% social prey, and 1.2% solitary epibenthic (referred to as epibenthic) (Fig 2B) (for details on functional groups, see [S1 Table](#)). When these predation events are compared to values of published reef fish mortality rates, their distribution matches closely (Fig 2).

### Functional group contributions

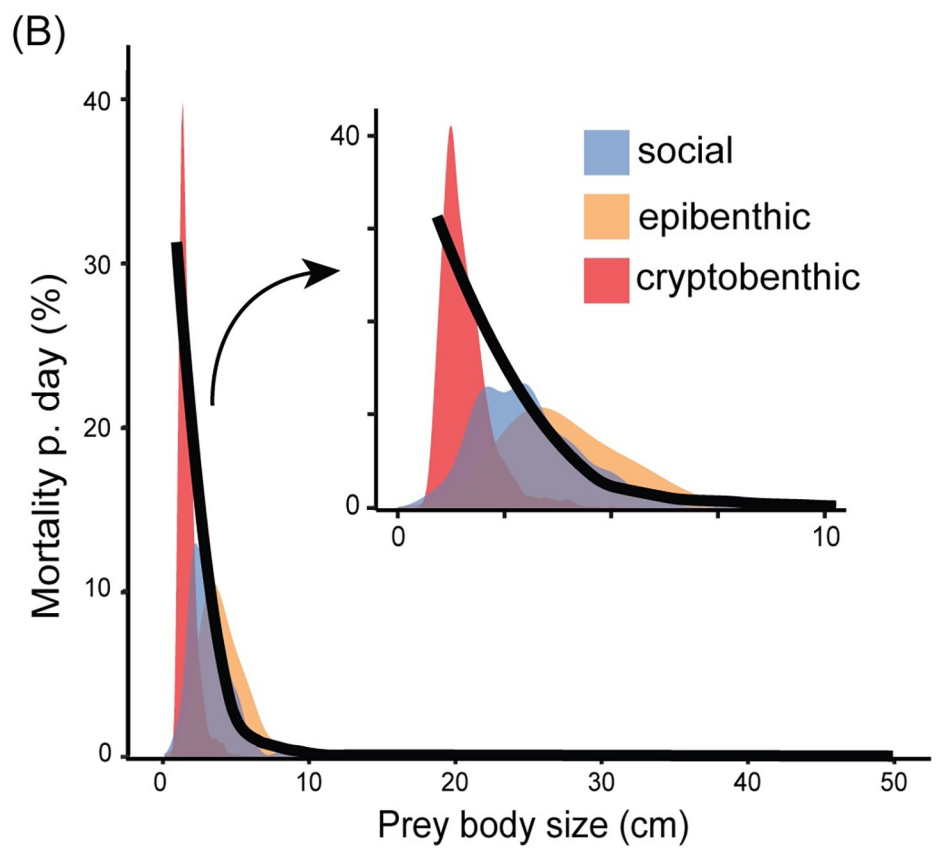
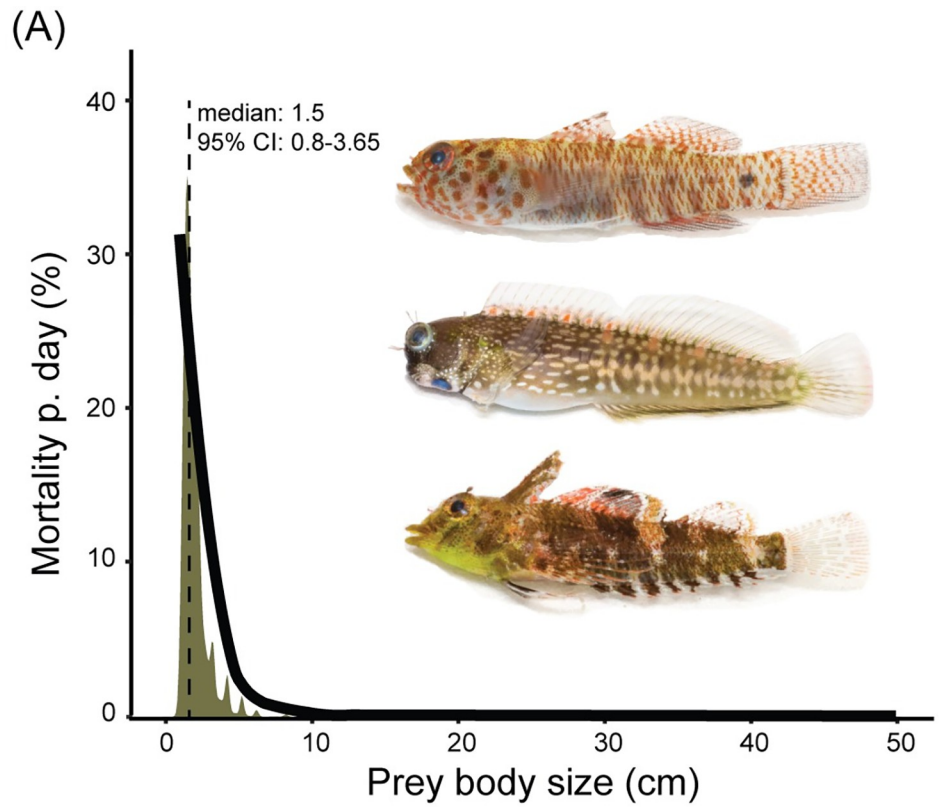
When the 32,218 fishes in our community were classified into prey functional groups, 59% were cryptobenthic, 7% were epibenthic, and 34% were social. Furthermore, of the 32,218 fishes in our community, 1,726 (5.4%) were considered potential fish predators (based on their trophic status from the literature, see [Materials and methods](#)). The functional groups of these predators were 85% grabbers and 15% engulfers.

### Comparing size-specific simulated predation to observed predation events at a community level

The distribution of potential predation events among different size classes of predators in our simulated community, was found to closely reflect the distributions in our metanalysis. This applied to both predator functional groups (grabbers and engulfers) (Fig 3A and 3B) and all 3 prey functional groups (Fig 3C–3E), except for small predator body sizes. In essence, for small predators (i.e.,  $\leq 20$  to 25 cm), cryptobenthic prey are underrepresented (Fig 3E), while epibenthic and social prey are overrepresented (Fig 3C–3E). This may be linked to the functional traits of these prey groups and the predators involved in this predation.

### Discussion

Cryptopredators have only recently been identified as significant fish consumers [21]. Their overwhelming abundance (relative to juveniles of large reef fish predators), along with our



**Fig 2. Cryptobenthic fishes are the main prey fishes on coral reefs.** (A) Community level predation simulated in our study along a prey size gradient (brown), mirrors the exponentially declining line that represents observed reef fish mortality rates from an independent meta-analysis on reef fish mortality [8]. Examples of primary contributors to this density distribution, from top to bottom: *Eviota queenslandica*, *Salaria alboguttatus*, *Enneapterygius tutuilae*. (B) The same density curve, in 2A, split according to prey functional groups, namely: cryptobenthic = red, epibenthic = yellow, social = blue. Original photographs for clipart in (A) were originally sourced from C.R. Hemingson, with permission. The data underlying this figure can be found in DOI: [10.5281/zenodo.6772154](https://doi.org/10.5281/zenodo.6772154).

<https://doi.org/10.1371/journal.pbio.3001898.g002>

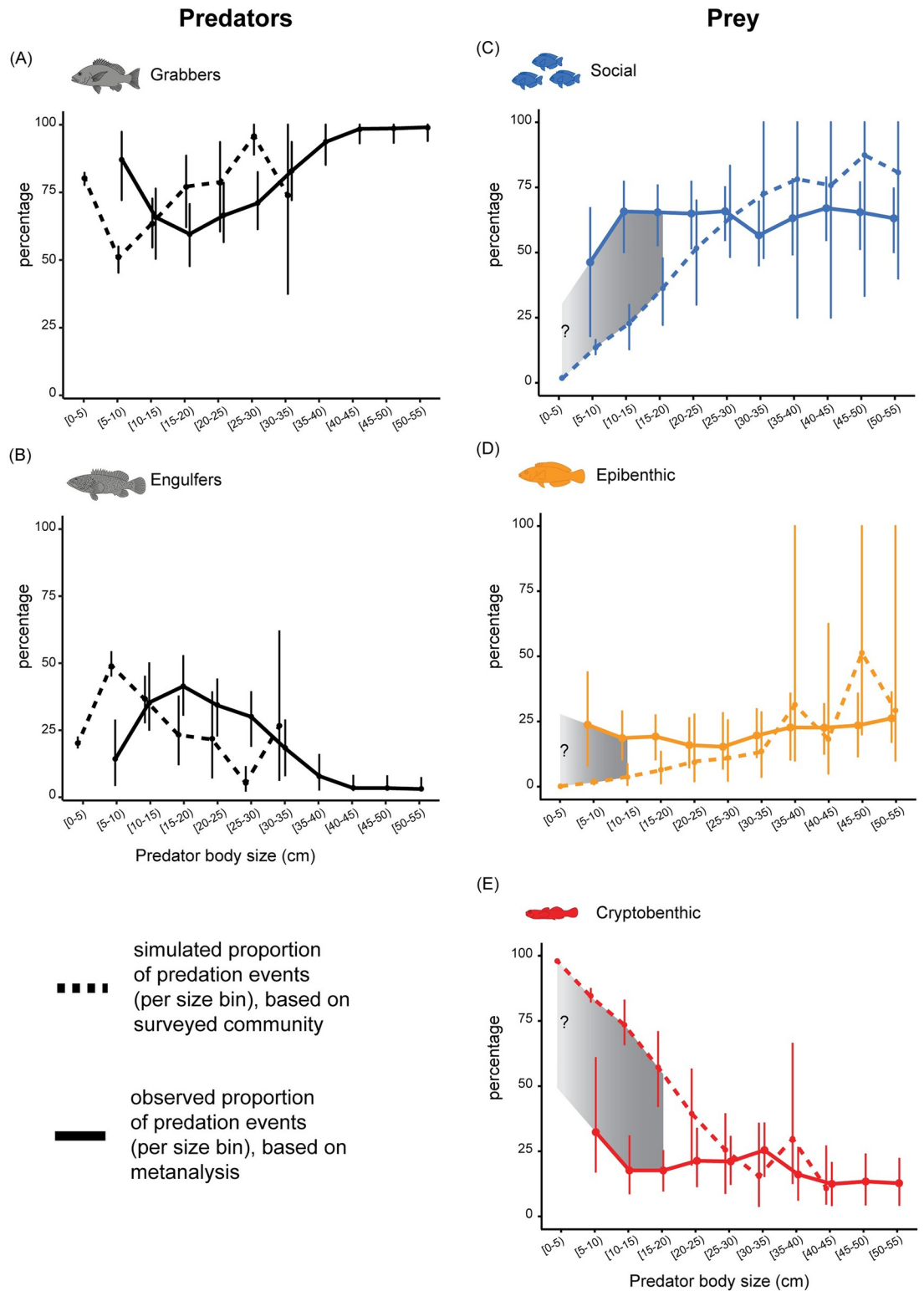
results of simulated community-level predation, highlight the potential of these previously overlooked cryptopredators to be the primary contributors to the process of fish predation in coral reef ecosystems. Common examples of cryptopredators (cryptobenthic reef fishes sensu Brandl, Goatley [42] which are carnivorous) include the Pseudochromidae, Plesiopidae, Gobiidae, and Apogonidae. Most of the species within these families remain under 15 cm throughout their lives [42].

The fishes consumed by cryptopredators, based on our simulations, are overwhelmingly cryptobenthic (approx. 90% of predation events) (Fig 2). Our results mirror previous empirical studies showing a high consumption of, and high turnover in, cryptobenthic fishes; a “crypto-pump,” fuelling coral reef ecosystems [20]. In essence, our results illuminate the “dark-productivity” (sensu [20]) that fuels coral reefs, by identifying their most likely predators. These fishes sustain some of the most important trophic pathways on coral reefs (e.g., the detrital and piscivory-cryptobenthic pump). This may add to the variety of mechanisms of energy recycling, which appear to be an essential attribute of oligotrophic ecosystems with high species diversity and biomass [43,44]. We show that one of the key pathways that links these fishes to the rest of the food-chain is through cryptopredators.

Although the underestimation of cryptobenthic prey in the diet of predators may be associated with methodological challenges such as high digestion rates and visual identification of prey in guts [20,45], we suggest that there may also be underlying reasons associated with the specific features of this prey functional group (cryptobenthic prey). There is overwhelming evidence, that most mortality in fishes occurs during the early life stages at small body sizes, and that this is due to predation [6,8,46,47]. This is at odds with the life history of cryptobenthic fishes. How can cryptobenthic fishes, the shortest living vertebrates [48,49], with extremely small body sizes and extremely high mortality rates, maintain viable populations? Sustained temporal reproduction [50], fast growth [51], and abundant larvae [20] certainly all help to facilitate the extreme cryptobenthic lifestyle. However, our data strongly suggest that their success may also be dependent on their ability to reduce relative predation risk below what would be expected based on their size alone. By reducing predation, they would be better able to spread predation-based mortality throughout their life on the reef, sustaining a higher number of reproducing individuals during this vulnerable period (S2 Fig). These benefits may be directly related to the characteristics of the cryptobenthic functional prey group such as the behaviour of “sitting” on the benthos [36] and cryptic colouration [52]. The drab colouration and “sitting still” may indeed be a highly successful antipredatory strategy.

The results discussed above, only became evident when investigating the community from a functional group perspective. Our simulation approach allows us to make estimates on the sizes of predators and prey involved, as well as the potential relationships between the predator and prey groups. Such results have key implications for our understanding and role of functional groups within their habitat, something which has been shown for other ecosystems as well [53–55]. Indeed, we show that the functional group approach is a powerful tool in elucidating the complexities of hyperdiverse systems such as coral reefs [56–58]. This functional approach may indeed, explain how cryptobenthic prey are able to exist after all.





**Fig 3. Functional groups of predator-prey fishes reveal patterns of community-level predation.** Simulated vs. observed relative contributions to the process of piscivory on reefs, based on predator functional groups (A, B) and prey functional groups (C-E). Overall, the trajectories of simulated contributions (dashed lines) and observed contributions (solid lines) were in agreement for predator and prey functional groups. Disparity was only found between the 2 estimates for small predator sizes, when results are based on prey functional groups: Social and epibenthic prey were overrepresented in the diet of small predators,



whereas cryptobenthic prey were underrepresented. Filled circles indicate means, whereas vertical bars indicate the range of values (minimum, maximum) for a specific size bin. Grey zones indicate size bins where a difference between predicted and observed relative contribution was found to be significant. Fish silhouettes redrawn from [36] and [37]. The data underlying this figure can be found in DOI: [10.5281/zenodo.6772154](https://doi.org/10.5281/zenodo.6772154).

<https://doi.org/10.1371/journal.pbio.3001898.g003>

It is important to note that other aspects of coral reef environments (e.g., habitat complexity, exposure) [59–61] may shape predator–prey interactions for cryptopredators. Specifically, the fractal dimension/scale [62] at which these predation events occur are likely not the same as for large predatory fishes. For large predatory fishes (e.g., Lutjanidae or Serranidae), the presence of large coral structures are likely to determine the balance between escape and susceptibility to predation [63]. However, for predation by small-bodied and inconspicuous predators (i.e., cryptopredation), it is likely that coral rubble (or small corals), instead, may be the structures creating the same advantages or disadvantages, as large coral structures for larger predators. Previous studies have found a high abundance of cryptobenthic fishes in rubble areas (as opposed to coral-covered areas) [60,61,64], suggesting an intricate matrix taking place at a smaller scale, where habitat may influence predation between cryptopredators and their prey [65]. Our results may help to put rubble habitats in the context of habitat complexity and the fractal dimension [62] for the fishes living within these areas. In essence, there is a need to further investigate the influence of abiotic variables on functional traits relating to cryptopredation.

Overall, we show that the vast majority of fish predation events on coral reefs is likely to involve predators below 15 cm. The vast majority of prey in these predation events is below 5 cm. “Typical” predators on reefs, such as jacks, barracudas, and groupers, are not the ones carrying out most predation on reefs. Most fish are eaten by cryptopredators on the reef. We highlight the overwhelming importance of cryptopredators as drivers of predation at a community level. Furthermore, our data suggests that, contrary to expectations, a small body size may indeed function as an antipredatory mechanism if it is associated with “sitting” on the benthos. Our functional groups approach revealed that predation events are also governed by prey functional traits. Overall, predation on coral reefs is a game of small fishes, and cryptobenthic prey fishes appear to be winning the game.

## Materials and methods

Quantifying ecosystem processes at a community level is a logistically difficult and time-consuming process. Usually, species interactions are inferred based on collected empirical data, most often recorded as presence/absence or abundance data, or through simulation-based approaches. Here, we compare and contrast these 2.

### Quantifying predator abundance and prey availability at a community level

We first surveyed a coral reef fish community at Lizard Island, a marine reserve with no fishing, located on the Great Barrier Reef, Australia, following [66]. Fish surveys were conducted in all traditionally recognised reef zones (back, flat, crest, slope). Both underwater visual surveys and enclosed clove oil stations were used to maximise the proportion of the fish community surveyed. The 2 approaches were chosen for different groups of fishes, based on their body sizes and behaviours [67]. Body sizes were estimated by a single diver during visual surveys for larger-bodied fishes and were measured in the laboratory under a stereomicroscope for smaller-bodied fishes (see below). Visual surveys were done with a diver initially conducting a 50 × 5 m transect tape survey to count large (>25 cm TL), water column-positioned or fast swimming fishes likely to be scared away by the diver. Upon return along the tape, the

same diver conducted a 30 × 5 m survey targeting smaller-bodied fishes that are less mobile. The diver then conducted another 30 × 5 m survey over the same area to count small-bodied, non-cryptic fishes usually found just above the reef benthos. Finally, the diver conducted a last 30 × 1 m survey to count cryptic individuals (e.g., within or under crevices) that would not have been surveyed using traditional visual surveying techniques [66]. In addition, to provide more accurate abundance estimates of cryptobenthic reef fishes, a set of 8 enclosed clove oil stations (following [67]) were deployed in each habitat. A total of 3 sets of visual surveys and 8 clove oil stations were conducted in each reef zone at each of the sites ( $n = 3$  sites). For more detailed information on sampling methods, see [66]. Fish surveys were conducted in accordance with the James Cook University Ethics Committee (A2375) and the Great Barrier Reef Marine Park Authority (G17/38142.1).

To account for the different spatial extents of the different surveying methods, a resampling algorithm was constructed. This allowed scaling the observed fish abundance to a standardised common area among surveys. This procedure generated 1 standard, 1,200 m<sup>2</sup> community, which can be interpreted as a reef section spanning the different reef zones, and with equal area in each of these zones. This “multihabitat” coral reef fish community had 32,235 fish individuals from 266 species. We then assigned all fishes to their respective prey functional group (based on their functional traits, see [S1 Table](#)) following [36].

Our quantification of potential predation events at a community level, started with a community dataset including fish species and body size. Based on body size and previously published relationships between body size and functional traits of both predator and prey fishes [36,37], we converted body sizes to functional trait values directly related to predator–prey interactions (i.e., prey body depth, predator gape size). We then conducted repeated simulations of potential predation events by sampling individuals (1 predator and 1 prey at a time) within the community. Only realistic interactions, based on the functional trait relationships, were considered (e.g., if the prey could fit in the predators’ gape), thus taking into account the presence of forbidden links [38,39]. Following simulations, we compared our results of potential predation, to observed consumption patterns, based on a meta-analysis of the gut contents of coral reef fish predators.

The implementation of a functional group approach (based on functional traits) has reduced the initial complexity of coral reef piscivores [37,68,69]. Recent studies have identified 2 functional groups of predators, grabbers and engulfers, which differ in their morphology, striking, capturing, and prey processing behaviour [37]. Reef fish prey can also be divided into cryptobenthic substratum dwellers (referred to herein as “cryptobenthic”), solitary epibenthic (“epibenthic” herein), and social fishes, which differ in antipredatory morphological and behavioural traits, as well as in habitat use (e.g., position in water column) [36]. We note here that the term “cryptobenthic” is slightly different than that of Brandl, Goatley [42]. For a detailed description of these functional groups, see [S1 Table](#).

Each individual fish species was assigned as a predator if that species has been found to feed on elusive prey in the literature or other online sources (e.g. 40). All fishes were considered as potential prey. Prey body size was then transformed to body depth based on the functional group of the species following [36].

$$D_{f,i} = a_f + b_f * \log(L_{f,i}),$$

where  $f$  is 1 of the 3 functional groups, and  $i$  an index denoting an individual fish,

$a_f = (-1.58, -0.78, -0.9)$ ,  $b_f = (1.04, 0.74, 0.95)$ , for  $f = (\text{cryptobenthic}, \text{epibenthic}, \text{social})$ , respectively.  $L$  is the total length of an individual fish. Predator body sizes were then transformed to gape sizes following relationships obtained from coral reef fish specimens

[28,70,71], based on the functional group to which the surveyed predator belonged to:

$$G_{f,i} = a_f + b_f * L_{f,i},$$

where  $f$  is 1 of the 2 functional groups, and  $i$  an index denoting an individual fish,

$a_f = (0.93, 0.04)$ ,  $b_f = (0.17, 0.17)$ , for  $f = (\text{engulfers}, \text{grabbers})$ , respectively.  $L$  is the total length of an individual fish.

We then conducted a series of simulations, whereby an individual predator from the community (along with its respective functional trait values) was randomly matched against an individual prey fish (along with its respective functional trait values). Each simulation consisted of 10,000 potential piscivory events, and the simulation was conducted 100 times with repetition. We then calculated the relationship between predator gape size and prey body depth, for each potential predation event (following 28), by dividing prey body depth to predator gape size. We only kept instances in which the obtained ratios were within the range of 0.14 to 0.7, as this has been found to be the relative prey size within which 95% of predation occurs [37], and eliminated any other instances (i.e., forbidden links [38,39]). Next, we binned these events into respective size bins of predators (from 5 to 50 cm, at 5 cm intervals), and calculated the relative contribution of each prey functional group to the overall prey availability for each predator size bin:

$$C_{f,b} = \frac{A_{f,b}}{\sum_{f=1}^n A_{f,b}},$$

where  $C$  is the relative contribution of available prey of a specific functional group  $f$  at a specific size bin  $b$ ,  $A$  is the abundance of individuals of the specific prey functional group, for the given size bin, and the denominator is the summation of the abundances of all  $n$  functional groups. These contributions were then compared to the observed consumption of each prey functional group based on the metanalysis of gut content data (see below).

### Observed diet of predators (metanalysis)

Diet information was collected from published literature on the gut contents of piscivorous coral reef teleost fishes in the Indo-Pacific realm (S1 Fig). Information extracted from the literature was: Range of predator body sizes sampled from each study, predator species, prey species, and number of occurrences that the prey species was found in predator guts. Prey species were then classified into functional groups (as above). We removed pelagic predators as they likely operate at a broader spatial scale than more benthic associated predators.

Individual body sizes were not available, as only size ranges were reported in the literature. Therefore, for every predation event recorded from the literature, we drew individual body sizes from a uniform distribution delimited by the range of sizes provided by the respective study. This process was done for each predation event recorded ( $n = 1,224$ ) and was simulated 1,000 times with repetition. In some instances, the exact size of the predator was recorded, and was therefore used as the only potential body size for the given predation events, throughout the simulations. These observed predation events were compared to our simulated predation events based on the overlap coefficient from the R-package “bayestestR” [72]. These predation events were then assigned into the same body size bins as the ones used in our community survey (see above). We then summarised the relative contribution of each prey functional group to each predator body size bin (as above).

## Supporting information

**S1 Fig. Map showing the sites from which studies of our metanalysis conducted gut content analyses.** Original map downloaded from Natural Earth ([www.naturalearth.com/downloads](http://www.naturalearth.com/downloads)).

(DOCX)

**S2 Fig.** (a) Current and (b) suggested models of body size vs. mortality relationships. While the overall mortality remains the same between the current and suggested model (area below curves), the shape of the suggested distribution (i.e., flattening the curve), results in different survivorship curves (c, d). These differences in survivorship curves may allow for a higher number of reproducing individuals and provide a potential explanation for limited individual gamete output, resulting in high overall contribution to the larval pool near coral reefs (Brandl and colleagues [20]). Fish silhouettes redrawn from (Mihalitsis and colleagues [36]).

(DOCX)

**S1 Table. Functional groups used in our study, along with a description of their functional traits directly related to predator–prey relationships.**

(DOCX)

## Acknowledgments

We thank: the staff at Lizard Island Research Station for logistical field assistance, C. Bowden, W. Collins, C. Hemingson, V. Huertas, J. Morais, A. Siqueira, R. Streit, and S. Tebbett for insightful discussions. We acknowledge the Dingaal people, the traditional owners and custodians of the land and country upon which this research was carried out, and pay respects to elders past and present.

## Author Contributions

**Conceptualization:** Michalis Mihalitsis, Renato A. Morais, David R. Bellwood.

**Data curation:** Michalis Mihalitsis, Renato A. Morais.

**Formal analysis:** Michalis Mihalitsis, Renato A. Morais.

**Funding acquisition:** Renato A. Morais, David R. Bellwood.

**Investigation:** Michalis Mihalitsis, Renato A. Morais.

**Methodology:** Michalis Mihalitsis, Renato A. Morais, David R. Bellwood.

**Project administration:** Michalis Mihalitsis, David R. Bellwood.

**Resources:** Renato A. Morais, David R. Bellwood.

**Software:** Michalis Mihalitsis, Renato A. Morais.

**Supervision:** David R. Bellwood.

**Validation:** Michalis Mihalitsis, Renato A. Morais, David R. Bellwood.

**Visualization:** Michalis Mihalitsis, David R. Bellwood.

**Writing – original draft:** Michalis Mihalitsis.

**Writing – review & editing:** Michalis Mihalitsis, Renato A. Morais, David R. Bellwood.

## References

1. Hixon MA. Predation as a process structuring coral-reef fish communities. In: Sale P, editor. *The ecology of fish on coral reefs*. Elsevier. 1991. p. 478–508.
2. Nathan R, Muller-Landau HC. Spatial patterns of seed dispersal, their determinants and consequences for recruitment. *Trends Ecol Evol*. 2000; 15(7):278–285. [https://doi.org/10.1016/s0169-5347\(00\)01874-7](https://doi.org/10.1016/s0169-5347(00)01874-7) PMID: 10856948
3. Harms KE, Wright SJ, Calderón O, Hernandez A, Herre EA. Pervasive density-dependent recruitment enhances seedling diversity in a tropical forest. *Nature*. 2000; 404(6777):493–495. <https://doi.org/10.1038/35006630> PMID: 10761916
4. Sale PF. *The ecology of fishes on coral reefs*. Elsevier. 1993.
5. Hixon MA, Carr MH. Synergistic predation, density dependence, and population regulation in marine fish. *Science*. 1997; 277(5328):946–949.
6. Doherty P, Dufour V, Galzin R, Hixon M, Meekan M, Planes S. High mortality during settlement is a population bottleneck for a tropical surgeonfish. *Ecology*. 2004; 85(9):2422–2428.
7. Randall JE. *Food habits of reef fishes of the West Indies*. Institute of Marine Biology, University of Puerto Rico, Mayaguez, P R. 1967. p. 665–847.
8. Goatley CHR, Bellwood DR. Body size and mortality rates in coral reef fishes: a three-phase relationship. *Proc Biol Sci*. 1841; 2016(283):20161858.
9. Almany GR, Webster MS. The predation gauntlet: early post-settlement mortality in reef fishes. *Coral Reefs*. 2006; 25(1):19–22.
10. Desbiens AA, Roff G, Robbins WD, Taylor BM, Castro-Sanguino C, Dempsey A, et al. Revisiting the paradigm of shark-driven trophic cascades in coral reef ecosystems. *Ecology*. 2021:e03303. <https://doi.org/10.1002/ecy.3303> PMID: 33565624
11. Casey JM, Baird AH, Brandl SJ, Hoogenboom MO, Rizzari JR, Frisch AJ, et al. A test of trophic cascade theory: fish and benthic assemblages across a predator density gradient on coral reefs. *Oecologia*. 2017; 183(1):161–175. <https://doi.org/10.1007/s00442-016-3753-8> PMID: 27744581
12. Rizzari JR, Bergseth BJ, Frisch AJ. Impact of conservation areas on trophic interactions between apex predators and herbivores on coral reefs. *Conserv Biol*. 2015; 29(2):418–429. <https://doi.org/10.1111/cobi.12385> PMID: 25185522
13. Roff G, Doropoulos C, Rogers A, Bozec Y-M, Krueck NC, Aurellado E, et al. The ecological role of sharks on coral reefs. *Trends Ecol Evol*. 2016; 31(5):395–407. <https://doi.org/10.1016/j.tree.2016.02.014> PMID: 26975420
14. Stier AC, Hanson KM, Holbrook SJ, Schmitt RJ, Brooks AJ. Predation and landscape characteristics independently affect reef fish community organization. *Ecology*. 2014; 95(5):1294–1307. <https://doi.org/10.1890/12-1441.1> PMID: 25000761
15. Stier AC, Stallings CD, Samhuri JF, Albins MA, Almany GR. Biodiversity effects of the predation gauntlet. *Coral Reefs*. 2017; 36(2):601–606.
16. Madin EM, Dill LM, Ridlon AD, Heithaus MR, Warner RR. Human activities change marine ecosystems by altering predation risk. *Glob Chang Biol*. 2016; 22(1):44–60. <https://doi.org/10.1111/gcb.13083> PMID: 26448058
17. Rasher DB, Hoey AS, Hay ME. Cascading predator effects in a Fijian coral reef ecosystem. *Sci Rep*. 2017; 7(1):1–10.
18. Mitchell MD, Harborne AR. Non-consumptive effects in fish predator–prey interactions on coral reefs. *Coral Reefs*. 2020;1–18.
19. Lester EK, Langlois TJ, Simpson SD, McCormick MI, Meekan MG. The hemisphere of fear—the presence of sharks influences the three dimensional behaviour of large mesopredators in a coral reef ecosystem. *Oikos*. 2020.
20. Brandl SJ, Tornabene L, Goatley CHR, Casey JM, Morais RA, Côté IM, et al. Demographic dynamics of the smallest marine vertebrates fuel coral reef ecosystem functioning. *Science*. 2019.
21. Goatley CH, González-Cabello A, Bellwood DR. Small cryptopredators contribute to high predation rates on coral reefs. *Coral Reefs*. 2017; 36(1):207–212.
22. Kingsford M. Spatial and temporal variation in predation on reef fishes by coral trout (*Plectropomus leopardus*, Serranidae). *Coral Reefs*. 1992; 11(4):193–198.
23. Parravicini V, Casey JM, Schiethkatte NM, Brandl SJ, Pozas-Schacre C, Carlot J, et al. Delineating reef fish trophic guilds with global gut content data synthesis and phylogeny. *PLoS Biol*. 2020; 18(12): e3000702. <https://doi.org/10.1371/journal.pbio.3000702> PMID: 33370276

24. Matley JK, Maes GE, Devloo-Delva F, Huerlimann R, Chua G, Tobin AJ, et al. Integrating complementary methods to improve diet analysis in fishery-targeted species. *Ecol Evol.* 2018; 8(18):9503–9515. <https://doi.org/10.1002/ece3.4456> PMID: 30377518
25. Bierwagen SL, Heupel MR, Chin A, Simpfendorfer CA. Trophodynamics as a tool for understanding coral reef ecosystems. *Front Mar Sci.* 2018; 5:24.
26. Collins A, Motta P. A kinematic investigation into the feeding behavior of the Goliath grouper *Epinephelus itajara*. *Environ Biol Fishes.* 2017; 100(4):309–323.
27. Porter HT, Motta PJ. A comparison of strike and prey capture kinematics of three species of piscivorous fishes: Florida gar (*Lepisosteus platyrhincus*), redfin needlefish (*Strongylura notata*), and great barracuda (*Sphyrna barracuda*). *Mar Biol.* 2004; 145(5):989–1000.
28. Mihalitsis M, Bellwood DR. A morphological and functional basis for maximum prey size in piscivorous fishes. *PLoS ONE.* 2017; 12(9):e0184679. <https://doi.org/10.1371/journal.pone.0184679> PMID: 28886161
29. Corn KA, Friedman ST, Burrell ED, Martinez CM, Larouche O, Price SA, et al. The rise of biting during the Cenozoic fueled reef fish body shape diversification. *Proc Natl Acad Sci U S A.* 2022; 119(31): e2119828119. <https://doi.org/10.1073/pnas.2119828119> PMID: 35881791
30. Claverie T, Wainwright PC. A morphospace for reef fishes: elongation is the dominant axis of body shape evolution. *PLoS ONE.* 2014; 9(11):e112732. <https://doi.org/10.1371/journal.pone.0112732> PMID: 25409027
31. Streit RP, Cumming GS, Bellwood DR. Patchy delivery of functions undermines functional redundancy in a high diversity system. *Funct Ecol.* 2019; 33(6):1144–1155.
32. McGill BJ, Enquist BJ, Weiher E, Westoby M. Rebuilding community ecology from functional traits. *Trends Ecol Evol.* 2006; 21(4):178–185. <https://doi.org/10.1016/j.tree.2006.02.002> PMID: 16701083
33. Huang W, González G, Zou X. Earthworm abundance and functional group diversity regulate plant litter decay and soil organic carbon level: A global meta-analysis. *Appl Soil Ecol.* 2020; 150:103473.
34. Werner C, Meredith LK, Ladd SN, Ingrisich J, Kübert A, van Haren J, et al. Ecosystem fluxes during drought and recovery in an experimental forest. *Science.* 2021; 374(6574):1514–1518. <https://doi.org/10.1126/science.abj6789> PMID: 34914503
35. Van Den Hoogen J, Geisen S, Routh D, Ferris H, Traunspurger W, Wardle DA, et al. Soil nematode abundance and functional group composition at a global scale. *Nature.* 2019; 572(7768):194–198. <https://doi.org/10.1038/s41586-019-1418-6> PMID: 31341281
36. Mihalitsis M, Hemingson CR, Goatley CH, Bellwood DR. The role of fishes as food: A functional perspective on predator-prey interactions. *Funct Ecol.* 2021; 35(5):1109–1119.
37. Mihalitsis M, Bellwood DR. Functional groups in piscivorous fishes. *Ecol Evol.* 2021; 11(18):12765–12778. <https://doi.org/10.1002/ece3.8020> PMID: 34594537
38. Morales-Castilla I, Matias MG, Gravel D, Araújo MB. Inferring biotic interactions from proxies. *Trends Ecol Evol.* 2015; 30(6):347–356. <https://doi.org/10.1016/j.tree.2015.03.014> PMID: 25922148
39. González-Varo JP, Traveset A. The labile limits of forbidden interactions. *Trends Ecol Evol.* 2016; 31(9):700–710. <https://doi.org/10.1016/j.tree.2016.06.009> PMID: 27471077
40. Froese, R. and D. Pauly. Editors. 2022. FishBase. World Wide Web electronic publication. [www.fishbase.org](http://www.fishbase.org), (06/2022).
41. Caley M. Age-specific mortality rates in reef fishes: Evidence and implications. *Aust J Ecol.* 1998; 23(3):241–245.
42. Brandl SJ, Goatley CHR, Bellwood DR, Tornabene L. The hidden half: ecology and evolution of cryptobenthic fishes on coral reefs. *Biol Rev Camb Philos Soc.* 2018; 93(4):1846–1873. <https://doi.org/10.1111/brv.12423> PMID: 29736999
43. Wild C, Huettel M, Klüeter A, Kremb SG, Rasheed MY, Jørgensen BB. Coral mucus functions as an energy carrier and particle trap in the reef ecosystem. *Nature.* 2004; 428(6978):66–70. <https://doi.org/10.1038/nature02344> PMID: 14999280
44. De Goeij JM, Van Oevelen D, Vermeij MJ, Osinga R, Middelburg JJ, De Goeij AF, et al. Surviving in a marine desert: the sponge loop retains resources within coral reefs. *Science.* 2013; 342(6154):108–110. <https://doi.org/10.1126/science.1241981> PMID: 24092742
45. Beukers-Stewart B, Jones G. The influence of prey abundance on the feeding ecology of two piscivorous species of coral reef fish. *J Exp Mar Biol Ecol.* 2004; 299(2):155–184.
46. Johnson D, Christie M, Stallings C, Pusack T, Hixon M. Using post-settlement demography to estimate larval survivorship: a coral reef fish example. *Oecologia.* 2015; 179(3):729–739. <https://doi.org/10.1007/s00442-015-3368-5> PMID: 26093629
47. Raventós N, Macpherson E. Effect of pelagic larval growth and size-at-hatching on post-settlement survivorship in two temperate labrid fish of the genus *Symphodus*. *Mar Ecol Prog Ser.* 2005; 285:205–211.



48. Depczynski M, Bellwood DR. Shortest recorded vertebrate lifespan found in a coral reef fish. *Curr Biol*. 2005; 15(8):R288–R289. <https://doi.org/10.1016/j.cub.2005.04.016> PMID: 15854891
49. Robitcz Sierra VS, Molina-Valdivia V, Solano-Iguaran JJ, Landaeta MF, Berumen ML. Year-round high abundances of the world's smallest marine vertebrate (*Schindleria*) in the Red Sea and worldwide associations with lunar phases. *Sci Rep*. 2021.
50. Lefèvre CD, Nash KL, González-Cabello A, Bellwood DR. Consequences of extreme life history traits on population persistence: do short-lived gobies face demographic bottlenecks? *Coral Reefs*. 2016; 35(2):399–409.
51. Gillooly JF, Brown JH, West GB, Savage VM, Charnov EL. Effects of size and temperature on metabolic rate. *Science*. 2001; 293(5538):2248–2251. <https://doi.org/10.1126/science.1061967> PMID: 11567137
52. Hemingson CR, Mihalitsis M, Bellwood DR. Are fish communities on coral reefs becoming less colourful? *Glob Chang Biol*. 2022; 28(10):3321–3332. <https://doi.org/10.1111/gcb.16095> PMID: 35294088
53. Araujo JM, Correa SB, Penha J, Anderson J, Traveset A. Implications of overfishing of frugivorous fishes for cryptic function loss in a Neotropical floodplain. *J Appl Ecol*. 2021; 58(7):1499–1510.
54. Arantes CC, Winemiller KO, Petrere M, Castello L, Hess LL, Freitas CE. Relationships between forest cover and fish diversity in the Amazon River floodplain. *J Appl Ecol*. 2018; 55(1):386–395.
55. Hoeinghaus DJ, Winemiller KO, Birnbaum JS. Local and regional determinants of stream fish assemblage structure: inferences based on taxonomic vs. functional groups. *J Biogeogr*. 2007; 34(2):324–338.
56. Pozas-Schacre C, Casey JM, Brandl SJ, Kulbicki M, Harmelin-Vivien M, Strona G, et al. Congruent trophic pathways underpin global coral reef food webs. *Proc Natl Acad Sci U S A*. 2021; 118(39). <https://doi.org/10.1073/pnas.2100966118> PMID: 34544855
57. Thibaut LM, Connolly SR, Sweatman HP. Diversity and stability of herbivorous fishes on coral reefs. *Ecology*. 2012; 93(4):891–901. <https://doi.org/10.1890/11-1753.1> PMID: 22690639
58. McLean M, Stuart-Smith RD, Villéger S, Auber A, Edgar GJ, MacNeil MA, et al. Trait similarity in reef fish faunas across the world's oceans. *Proc Natl Acad Sci U S A*. 2021; 118(12). <https://doi.org/10.1073/pnas.2012318118> PMID: 33723036
59. Harborne AR, Kochan DP, Esch MM, Fidler RY, Mitchell MD, Butkowski DW, et al. Drivers of fine-scale diurnal space use by a coral-reef mesopredatory fish. *J Fish Biol*. 2022; 100(4):1009–24. <https://doi.org/10.1111/jfb.15006> PMID: 35099815
60. Harborne A, Jelks H, Smith-Vaniz W, Rocha L. Abiotic and biotic controls of cryptobenthic fish assemblages across a Caribbean seascape. *Coral Reefs*. 2012; 31(4):977–90.
61. Troyer EM, Coker DJ, Berumen ML. Comparison of cryptobenthic reef fish communities among microhabitats in the Red Sea. *PeerJ*. 2018; 6:e5014. <https://doi.org/10.7717/peerj.5014> PMID: 29938133
62. Nash KL, Graham NA, Wilson SK, Bellwood DR. Cross-scale habitat structure drives fish body size distributions on coral reefs. *Ecosystems*. 2013; 16(3):478–90.
63. Beukers JS, Jones GP. Habitat complexity modifies the impact of piscivores on a coral reef fish population. *Oecologia*. 1998; 114(1):50–9. <https://doi.org/10.1007/s004420050419> PMID: 28307557
64. Depczynski M, Bellwood D. Microhabitat utilisation patterns in cryptobenthic coral reef fish communities. *Mar Biol*. 2004; 145(3):455–63.
65. Wolfe K, Kenyon TM, Mumby PJ. The biology and ecology of coral rubble and implications for the future of coral reefs. *Coral Reefs*. 2021; 40(6):1769–806.
66. Morais RA, Bellwood DR. Pelagic Subsidies Underpin Fish Productivity on a Degraded Coral Reef. *Curr Biol*. 2019. <https://doi.org/10.1016/j.cub.2019.03.044> PMID: 31006572
67. Ackerman JL, Bellwood DR. Reef fish assemblages: a re-evaluation using enclosed rotenone stations. *Mar Ecol Prog Ser*. 2000; 206:227–37.
68. Green SJ, Dilley ER, Benkwitt CE, Davis AC, Ingeman KE, Kindinger TL, et al. Trait-mediated foraging drives patterns of selective predation by native and invasive coral-reef fishes. *Ecosphere*. 2019; 10(6):e02752.
69. Green SJ, Côté IM. Trait-based diet selection: prey behaviour and morphology predict vulnerability to predation in reef fish communities. *J Anim Ecol*. 2014; 83(6):1451–60. <https://doi.org/10.1111/1365-2656.12250> PMID: 24861366
70. Mihalitsis M, Bellwood DR. Morphological and functional diversity of piscivorous fishes on coral reefs. *Coral Reefs*. 2019; 38(5):945–54.
71. Mihalitsis M, Bellwood DR. Functional implications of dentition-based morphotypes in piscivorous fishes. *R Soc Open Sci*. 2019; 6(9):190040. <https://doi.org/10.1098/rsos.190040> PMID: 31598277
72. Makowski D, Lüdecke D, Ben-Shachar MS, Wilson MD, Bürkner P-C, Mahr T. Package 'bayestestR'. last viewed August. 2020; 20:2020.