

UC Davis

UC Davis Previously Published Works

Title

Characterization of a continuous feline mammary epithelial cell line susceptible to feline epitheliotropic viruses

Permalink

<https://escholarship.org/uc/item/8rk1034t>

Journal

Journal of Virological Methods, 157(1)

ISSN

0166-0934

Authors

Pesavento, Patricia
Liu, Hongwei
Ossiboff, Robert J
[et al.](#)

Publication Date

2009-04-01

DOI

10.1016/j.jviromet.2008.11.018

Peer reviewed



Since January 2020 Elsevier has created a COVID-19 resource centre with free information in English and Mandarin on the novel coronavirus COVID-19. The COVID-19 resource centre is hosted on Elsevier Connect, the company's public news and information website.

Elsevier hereby grants permission to make all its COVID-19-related research that is available on the COVID-19 resource centre - including this research content - immediately available in PubMed Central and other publicly funded repositories, such as the WHO COVID database with rights for unrestricted research re-use and analyses in any form or by any means with acknowledgement of the original source. These permissions are granted for free by Elsevier for as long as the COVID-19 resource centre remains active.



Short communication

Characterization of a continuous feline mammary epithelial cell line susceptible to feline epitheliotropic viruses

Patricia Pesavento^{a,*}, Hongwei Liu^b, Robert J. Ossiboff^d, Karla M. Stucker^d, Anna Heymer^d, Lee Millon^b, Jason Wood^a, Deborah van der List^c, John S.L. Parker^d

^a Department of Pathology, Microbiology and Immunology, University of California Davis, Davis, CA 95616, United States

^b Center for Companion Animal Health, University of California Davis, Davis, CA 95616, United States

^c School of Veterinary Medicine, and Neurobiology, Physiology, and Behavior, University of California Davis, Davis, CA 95616, United States

^d Baker Institute for Animal Health, College of Veterinary Medicine, Cornell University, Ithaca, NY 14853, United States

A B S T R A C T

Article history:

Received 3 October 2008

Received in revised form 9 November 2008

Accepted 20 November 2008

Available online 14 January 2009

Keywords:

Feline

Epithelial

Cell line

Virus susceptibility

Tight junction

Junctional adhesion molecule-A

Mucosal epithelial cells are the primary targets for many common viral pathogens of cats. Viral infection of epithelia can damage or disrupt the epithelial barrier that protects underlying tissues. *In vitro* cell culture systems are an effective means to study how viruses infect and disrupt epithelial barriers, however no true continuous or immortalized feline epithelial cell culture lines are available. A continuous cell culture of feline mammary epithelial cells (FMEC UCD-04-2) that forms tight junctions with high transepithelial electrical resistance ($>2000 \Omega \text{ cm}^{-1}$) 3–4 days after reaching confluence was characterized. In addition, it was shown that FMECs are susceptible to infection with feline calicivirus (FCV), feline herpesvirus (FHV-1), feline coronavirus (FeCoV), and feline panleukopenia virus (FPV). These cells will be useful for studies of feline viral disease and for *in vitro* studies of feline epithelia.

© 2008 Elsevier B.V. All rights reserved.

1. Introduction

Mucosal epithelial cells form a physical barrier that protects the underlying tissues from invasion by pathogens and have important functions that include absorption of nutrients, maintenance of water and electrolyte balance, and secretion of milk, mucus, enzymes and molecules that are important for defense against pathogen invasion. Despite this armory, mucosal epithelial cells are the primary entry point for many feline viral pathogens including feline calicivirus (FCV), feline herpesvirus-1 (FHV), feline panleukopenia virus (FPV), and feline coronavirus (FCoV) (Pesavento et al., 2008; Gaskell et al., 2007; Hueffer and Parrish, 2003; De Groot and Horzinek, 1995). Infection by these viruses can disrupt or destroy the cellular or junctional barrier resulting in lesions such as ulceration or vesiculation, sloughing of epithelium, or abnormal secretion and/or absorption.

Many viruses target specifically receptors found on the surface of epithelial cells. Recently, feline junctional adhesion molecule-A (fJAM-A) was identified as a functional receptor for FCV (Makino

et al., 2006). JAM-A localizes to junctional complexes in endothelial and epithelial cells and is important for maintaining intact mucosal epithelial barriers; in JAM-A^{-/-} mice the colonic mucosal epithelium has increased permeability to small molecules and is infiltrated by polymorphonuclear leukocytes (Laukoetter et al., 2007). The JAM-A molecule is not readily accessible from the apical side of polarized epithelia (Excoffon et al., 2008), therefore, an important unanswered question is how FCV gains access to the receptor. In contrast, aminopeptidase N, the receptor for feline coronaviruses, is thought to be present on the apical surface of epithelial cells (Rossen et al., 2001). The receptor for feline panleukopenia virus is the feline transferrin receptor (Parker et al., 2001), which is located on the basolateral surface of polarized epithelial cells (Merle et al., 2007) and previous work in canine MDCK cells showed that FPV bound sixfold more efficiently to the basolateral than the apical surface of these cells (Basak and Compans, 1989). FPV is thought to access the basolateral surface of intestinal crypt epithelial cells following systemic spread. Epithelial cells are the first cell type that feline herpesviruses encounter during infection of a new host, and while it is not known if FHV infects preferentially via apical or basolateral surfaces of epithelial cells, human herpes simplex viruses preferentially infect via the apical surface of epithelial cells (Galen et al., 2006; Hayashi, 1995; Topp et al., 1997).

* Corresponding author at: Vet Med:PMI, 4206 VM3A, 1 Shields Avenue, Davis, CA 95616-5270, United States. Tel.: +1 530 752 1166; fax: +1 530 752 3349.

E-mail address: papesavento@ucdavis.edu (P. Pesavento).

In order to understand how feline viruses cross epithelial barriers and initiate infection and to discover viral and host cellular factors that regulate these interactions a suitable epithelial cell line that forms tight junctions and that can be cultivated *in vitro* is needed. A continuous feline mammary epithelial cell line (FMEC UCD-04-2, henceforth FMEC) that forms tight junctions and has a high transepithelial electrical resistance (TEER) was characterized. In addition, we show that FMECs are susceptible to infection with FCV, FHV-1, FeCoV, and FPV.

2. Materials and methods

2.1. Cells

Crandell-Reese feline kidney (CRFK; ATCC #CCL-94) cells were grown in Eagle's minimal essential medium (EMEM; CellGro) supplemented with 5% fetal bovine serum (HyClone), 100 U ml⁻¹ of penicillin, 100 µg ml⁻¹ streptomycin, 0.25 µg ml⁻¹ amphotericin B, 1 mM sodium pyruvate, and non-essential amino acids (CellGro). Madin-Darby canine kidney (MDCK; ATCC cat. CCL-34) cells were grown in Dulbecco's modified minimal essential medium (DMEM) supplemented with 10% fetal bovine serum, 100 U ml⁻¹ of penicillin, 100 µg ml⁻¹ streptomycin, and 0.25 µg ml⁻¹ amphotericin B.

2.2. Feline mammary epithelial cell line

FMEC cells were derived using a method by Munson et al. (1998) and donated generously by A. Moresco (School of Veterinary Medicine, University of California, Davis). Cells were first obtained in their sixth passage and were maintained in a 1:1 mix of Dulbecco's modified Eagle's medium/Ham's F12, 100 U ml⁻¹ penicillin, 100 µg ml⁻¹ streptomycin, 1% nonessential 25 amino acids, and 10 ng ml⁻¹ epidermal growth factor (BD Biosciences, San Jose, CA, cat#354001) at 37 °C in a humidified atmosphere with 5% CO₂.

2.3. Karyotyping analysis

Cells were prepared for cytogenetic analysis as described previously (Petkov and Anderson, 2008). Briefly, cultures were incubated in media with 0.25 µg ml⁻¹ colcemid for 4 h. Cells were collected after trypsinization and incubated at RT in 0.075 M KCl for 30 min then fixed in Carnoy's fixative (3:1 methanol:acetic acid). Fixed cells were dropped on microscope slides and stained with Giemsa in phosphate buffer. Multiple chromosome spreads from low (6) passaged and high (14) passaged cells were examined and karyotyped with a Genus Cytogenetic workstation (Applied Imaging, Grand Rapids, MI).

2.4. Analysis of tight junctions by immunofluorescence microscopy

Monolayers of mammary epithelial cells were seeded at 8 × 10⁴ cells per well in eight-chambered slides (Nalge Nunc Inc., #177445, Naperville, IL) and grown at 37 °C with 5% CO₂ for 2–3 days. The cells were rinsed with PBS before fixation in 2% paraformaldehyde for 20 min at room temperature. Post-fixation, the slides were washed twice with PBST (PBS containing 0.1% Triton X-100) and blocked with 2% bovine serum albumin (BSA) in PBST (blocking buffer) for 1 h or overnight at 4 °C. Polyclonal rabbit anti-human occludin and polyclonal rabbit anti human ZO-1 were purchased from Zymed Laboratories, Inc., (South San Francisco, CA). A rabbit antiserum against the purified fJAM-A ectodomain was described previously (Ossiboff et al., 2007). The primary antibodies were diluted in blocking buffer containing either 5% normal donkey or normal goat serum and incubated for 1 h at room

temperature or 4 °C overnight in a humidified chamber. Following three washes in PBST, bound antibodies were detected with Alexa488-conjugated donkey anti-rabbit and Alexa568-conjugated goat anti-mouse immunoglobulin (IgG) (Molecular Probes, Invitrogen). Non-immune ascites fluid (in the case of the fJAM-A antibody) and/or secondary antibody alone were used as negative controls. After three additional washes in PBST, the cell nuclei were counterstained with DAPI (KPL Inc., Cat#71-03-01, Gaithersburg, MD). Cover slips were mounted with Vectashield (Vector Laboratories, Burlingame, CA) and images were acquired with an Olympus FV500 series confocal microscope (Olympus, Tokyo, Japan) equipped with argon and krypton lasers and 405 diode. Image stacks were collected on the z-axis and steps were made at the optimal voxel distance for a plan achromatic 40× objective. Stack depths were from 5 to 8 µm using a pixel resolution of 1024 × 1024. For enhanced clarity, DAPI was pseudocolored magenta using Olympus Fluoview software. The contrast and brightness were enhanced using Adobe Photoshop (Mountain View, CA).

2.5. Viruses and infection assays

Feline calicivirus (UCD-AN132) was originally obtained from an oropharyngeal swab of a shelter-housed female adult cat. Twice passaged viral stocks were prepared and titrated by plaque assay in CRFK cells as described previously (Bidawid et al., 2003; Ossiboff et al., 2007). Feline herpesvirus (UCD-AN96cat425) was obtained from a conjunctival/oropharyngeal combined swab sample taken from a shelter-housed cat. A viral stock was prepared from viruses twice passaged in CRFK cells. Feline coronaviruses, FIPV WSU-79/1146 and FECV WSU-79/1683, were propagated in CRFK cells and titrated in CRFK and Fcwf-4 cells using a 50% tissue culture infectious dose (TCID₅₀) assay as described previously (Boyle et al., 1984). Three parvoviruses (FPV, CPV-2, and CPV-2b) were derived from infectious plasmid clones transfected into Norden laboratory feline kidney cells (NLFKs). The resulting virus was amplified and passaged in NLFKs one or two times to obtain low passage virus stocks. Viral stocks were titrated on NLFKs using a 50% tissue culture infectious dose (TCID₅₀) assay as described previously (Parker and Parrish, 1997).

Monolayers of FMECs were seeded at 1 × 10⁵ cells per well in eight-chambered slides or at 2 × 10⁵ in six-well plates containing 18 mm glass cover slips and grown at 37 °C in 5% CO₂ overnight. Cells were inoculated with viruses at a multiplicity of infection of ~1 and incubated for 12 h (FCV) to 22 h (FHV, FCoV, and FPV) at 37 °C with 5% CO₂. Cells were then fixed in 2% paraformaldehyde for 15–20 min at room temperature and then virus detected using the following antibodies: mouse anti-FCV (clone S1-8, Custom Monoclonals Intl., Sacramento, CA), mouse anti-parvovirus (to NS1 non structural protein, courtesy of C. Astell, University of British Columbia), mouse anti-canine coronavirus (FIPV-70, Custom Monoclonals Intl., Sacramento, CA) and mouse anti-feline herpesvirus (Herpes 7-7, Custom Monoclonals Intl., Sacramento, CA). Cover slips were incubated for 1 h with primary antibodies, washed in PBS, then incubated with secondary goat anti-mouse-IgG conjugated to Alexa fluor 488 and goat anti-rabbit-IgG conjugated to Alexa fluor 594 (Molecular Probes, Invitrogen). A nuclear stain, DAPI (Molecular Probes), was applied in some sections for 5 min prior to mounting. All antibodies and DAPI were diluted in permeabilization solution consisting of PBS with 1% BSA, 0.1% Triton X-100, and 0.05% sodium azide.

2.6. Measurement of transepithelial resistance

Cell culture 12-well transparent inserts (1.0 µm pore size; Beckton Dickinson) in 12-well tissue culture plates (Corning) were seeded with 1–2 × 10⁵ cells (CRFK, FMEC); 4 inserts per cell line in

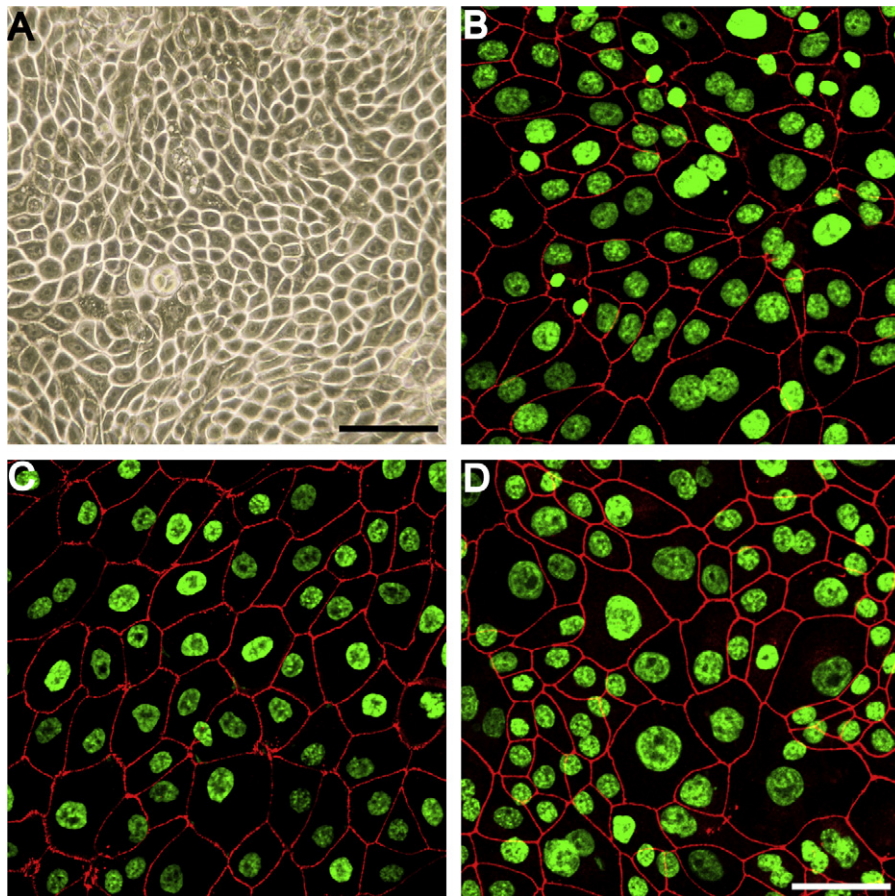


Fig. 1. FMECs form tight junctional complexes in culture. (A) FMECs at passage 9 are tightly packed, polygonal cells that form a confluent monolayer. Junctional complexes were detected by immunofluorescence microscopy between adjacent FMECs and contained (B) occludin, (C) ZO-1, and (D) β AM-A. Nuclei were stained with DAPI and pseudocolored green. Junctional proteins are pseudocolored red. Bar = 50 μ m.

2 ml total appropriate growth medium (0.4 ml in upper and 1.5 ml in lower chamber). Plates were incubated at 37°C in a 5% CO₂, humidified atmosphere for 24 h. Transepithelial electrical resistance was measured using a Trans Epithelial Electrical Resistance System (TEER; Endohm, World Precision Instruments, Sarasota, FL) every 24 h. Growth medium was replaced daily. To determine TEER, the average resistance of two blank (media alone) inserts was subtracted from the sample reading, and resistance was corrected for the growth surface area. The background TEER was <25 Ω cm⁻¹.

3. Results and discussion

3.1. FMECs are a continuously dividing cell line of feline origin and have increased ploidy

FMECs were passaged at least 25 times without loss of epithelial morphology or cytokeratin expression, and with no reduction in cell doubling time (data not shown). We confirmed the feline origin and investigated the ploidy profile of FMECs by cytochrome sequence

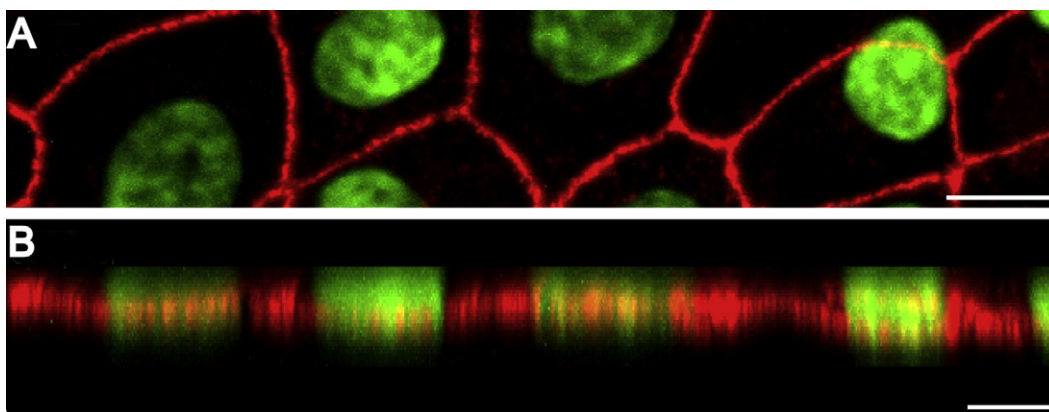


Fig. 2. FMECs form polarized epithelial monolayers. (A) XY projection of FMECs at passage 11. ZO-1 was detected by confocal immunofluorescence microscopy, nuclei were stained with DAPI and pseudocolored green. Bar = 10.6 μ m. (B) XZ-projection derived from image shown in (A). ZO-1 protein was tightly linear at approximately the lower third (base) of the FMEC cells. Cells were labeled on day 5 after passage and were on average 8–12 μ m in height. Bar = 15 μ m.

analysis and by karyotyping. Early passage FMEC cells (passage 6) had a range of 44–96 chromosomes with a modal number of 48. However, late passage FMECs (greater than passage 12) had a much narrower range of 66–71 chromosomes with a modal number of 68 and stabilized into subtetraploid cell line. Total DNA was extracted and *cytochrome B* was sequenced and analyzed. The BLAST results confirmed that the cytochrome B sequences derived from FMECs were 100% identical to those of the domestic cat, *Felis catus*.

3.2. FMECs express integral tight junctional proteins including the FCV receptor fJAM-A

Tight junctions are composed of a network of cytosolic proteins, cytoskeletal elements, and several transmembrane proteins (Schneeberger and Lynch, 2004). The formation of tight junctions is a characteristic of mucosal epithelial cells. The zonula occludens-1 (ZO-1) protein is a cytosolic protein that localizes to tight junctions where it is thought to form a scaffold that links the tight junction-associated transmembrane proteins to the perijunctional actin cytoskeleton. ZO-1 may also be important in transducing signals that regulate the paracellular barrier (Anderson et al., 1988). Transmembrane proteins that are found within tight junctions include claudins, occludin and members of the immunoglobulin superfamily such as junctional adhesion molecule-A (JAM-A) (for review, Shin et al., 2006).

In epithelial cells junctional complexes form at cell–cell interfaces. To determine if FMECs formed typical junctional complexes, we examined the distribution of tight junctional markers occludin

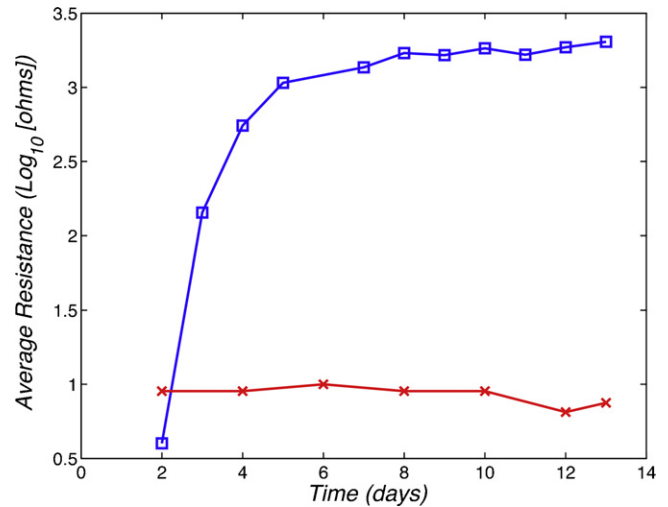


Fig. 3. FMECs develop high transepithelial resistance indicating development of a barrier to the passage of ions. FMEC and CRFK cells were seeded in cell culture inserts with 1 μm pores (1×10^5 cells per insert) and the transepithelial resistance was measured daily. Each data point represents the mean resistance (Ωcm^{-2}) of four inserts \pm S.D. of a single experiment.

and ZO-1 by immunofluorescence microscopy. It was found that ZO-1 and occludin localized, in an uninterrupted manner, along the cell–cell contacts in the intercellular regions of the confluent FMEC monolayer (Fig. 1B and C). The tight junction was identi-

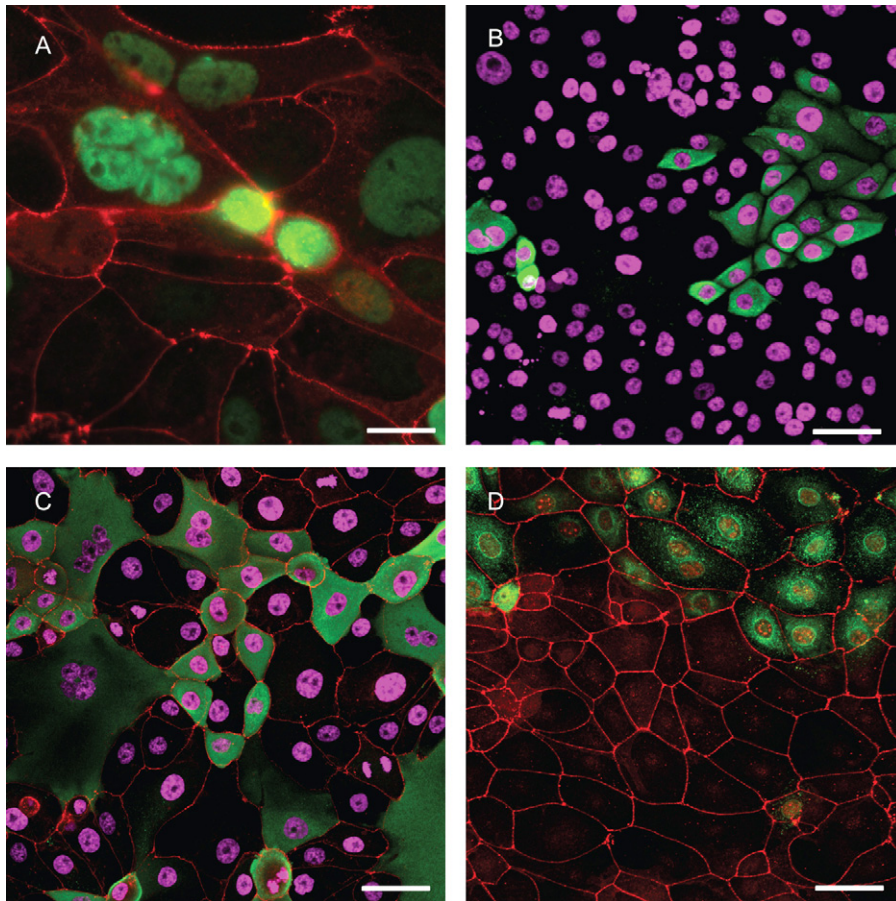


Fig. 4. FMECs are susceptible to infection with feline epitheliotropic viruses. FMECs were inoculated with (A) FPV, (B) FCV, (C) FCoV, and (D) FHV then fixed and immunostained using virus-specific antibodies. Virus antigen is pseudocolored green. In panels A, C, and D, fJAM-A was immunostained and is pseudocolored red. Nuclei were stained with DAPI and pseudocolored magenta in panels B and C. Size bar in panel A = 23 μm , size bars in panels B–D = 50 μm .

fied in z-plane optical sections as the cell–cell junctional region with maximal ZO-1 staining (Fig. 2A and B). Feline junctional adhesion molecule-A (fJAM-A) is a receptor for feline calicivirus (Makino et al., 2006) that localizes to tight junctions of epithelial cells in human and murine epithelial cells [reviewed in Mandell and Parkos, 2005]. Similar to the distribution of ZO-1 and occludin, it was found that fJAM-A also localized to cell–cell contacts in FMEC monolayers (Fig. 1D). By comparison, fJAM-A is distributed diffusely on the surface of CRFK cells (Ossiboff et al., 2007 and data not shown).

3.3. FMEC monolayers produce a resistant barrier

Small molecules and solutes traverse epithelial barriers by two major routes. Some proteins and nutrients move through epithelial cells selectively by transcytosis. Small molecules can also cross the epithelium through tight junctions that seal the paracellular space between epithelial cells (Schneeberger and Lynch, 2004). Tight junctions allow the selective passage of some small molecules and ions—normally cations; however, this movement of ions is physiologically restricted and consequently confluent monolayers of epithelial cells that form tight junctions normally have a high TEER. To investigate the junctional permeability of the FMECs, we determined the TEER of FMEC monolayers. TEER readings were also made on CRFK cells, a feline tissue culture cell line that does not form tight junctions. Resistance readings taken over the course of 13 days after the cells were seeded showed that TEER increased in FMECs whereas TEER remained relatively unchanged in CRFK monolayers (Fig. 3). By day 3 after seeding, the FMEC monolayers were confluent and TEER measurements were increasing. The FMEC monolayer demonstrated a peak TEER of $\sim 2000 \Omega \text{ cm}^2$ by day 5 that was maintained for at least 8 days thereafter. The CRFK monolayers did not exhibit a resistance greater than $10 \Omega \text{ cm}^2$ for the duration of the experiment. It is concluded that FMEC monolayers developed functional tight junctions as evidenced by the increase in TEER.

3.4. FMECs are susceptible to several different feline viruses

Epithelial cells are the primary target for several common feline viral pathogens including FCV, FHV, FPV, and FCoV. Disruption of respiratory (FHV and FCV), oral (FHV and FCV), or enteric (feline panleukopenia virus, FCoV) epithelial function as a consequence of viral infection of epithelial cells plays a major role in the pathogenesis of these viral diseases (De Groot and Horzinek, 1995; Gaskell et al., 2007; Hueffer and Parrish, 2003; Pesavento et al., 2008). All epithelia share common properties, including morphology, expression of the cytokeratin intermediate filaments (Moll et al., 1982), and specialized connections between the cells (Gumbiner, 1996). Our current understanding of the virus: host cell interactions for feline epitheliotropic viruses relies primarily on *in vitro* studies of immortalized mesenchymal and monocyte cell lines and to a lesser degree on short-term primary epithelial culture (Leeming et al., 2006; Sandmeyer et al., 2005). The susceptibility of FMECs to four different feline viruses, FCV, FHV, FPV, and FCoV, were examined. The susceptibility of these cells to infection with canine parvovirus, which has been shown previously to infect feline cells and to mammalian reoviruses, which infect a broad range of mammalian cells and can use human and murine JAM-A as functional receptors were examined. It was found that FMECs supported infection by all of these viruses (Fig. 4A–D and data not shown), indicating that these cells are permissive to a broad range of different virus types.

4. Summary

The feline mammary epithelial cell line FMEC UCD-04-2 grows continuously in tissue culture and forms tight junctions that can

maintain a high-resistance transcellular barrier. FMECs are fully susceptible to infection by epitheliotropic feline viruses FHV, FeCoV, FCV, and FPV. It is expected that FMECs will be useful tools for *in vitro* studies of viral infection. These cells may also be useful generally for studying the formation and maintenance of polarized epithelia.

Acknowledgements

The authors appreciate the guidance of Drs. L. Munson and C.P. Drew.

References

- Anderson, J.M., Stevenson, B.R., Jesaitis, L.A., Goodenough, D.A., Mooseker, M.S., 1988. Characterization of ZO-1, a protein component of the tight junction from mouse liver and Madin-Darby canine kidney cells. *J. Cell. Biol.* 106 (4), 1141–1149.
- Basak, S., Compans, R.W., 1989. Polarized entry of canine parvovirus in an epithelial cell line. *J. Virol.* 63 (7), 3164–3167.
- Bidawid, S., Malik, N., Adegbunrin, O., Sattar, S.A., Farber, J.M., 2003. A feline kidney cell line-based plaque assay for feline calicivirus, a surrogate for Norwalk virus. *J. Virol. Methods* 107 (2), 163–167.
- Boyle, J.F., Pedersen, N.C., Evermann, J.F., McKeirnan, A.J., Ott, R.L., Black, J.W., 1984. Plaque assay, polypeptide composition and immunochemistry of feline infectious peritonitis virus and feline enteric coronavirus isolates. *Adv. Exp. Med. Biol.* 173, 133–147.
- De Groot, R.J., Horzinek, M.C., 1995. Feline infectious peritonitis. In: Siddell, S.G. (Ed.), *The Coronaviridae*. Plenum Press, New York, NY, pp. 293–315.
- Excoffon, K., Guglielmi, K.M., Wetzel, J.D., Gansemer, N.D., Campbell, J.A., Dermody, T.S., Zabner, J., 2008. Reovirus preferentially infects the basolateral surface and is released from the apical surface of polarized human respiratory epithelial cells. *J. Infect. Dis.* 197 (8), 1189–1197.
- Galen, B., Cheshenko, N., Tuyama, A., Ramratnam, B., Herold, B.C., 2006. Access to nectin favors herpes simplex virus infection at the apical surface of polarized human epithelial cells. *J. Virol.* 80 (24), 12209–12218.
- Gaskell, R., Dawson, S., Radford, A., Thiry, E., 2007. Feline herpesvirus. *Vet. Res.* 38 (2), 337–354.
- Gumbiner, B.M., 1996. Cell adhesion: the molecular basis of tissue architecture and morphogenesis. *Cell* 84 (3), 345–357.
- Hayashi, K., 1995. Role of tight junctions of polarized epithelial MDCK cells in the replication of herpes simplex virus type 1. *J. Med. Virol.* 47 (4), 323–329.
- Hueffer, K., Parrish, C.R., 2003. Parvovirus host range, cell tropism and evolution. *Curr. Opin. Microbiol.* 6 (4), 392–398.
- Laukoetter, M.G., Nava, P., Lee, W.Y., Severson, E.A., Capaldo, C.T., Babbitt, B.A., Williams, I.R., Koval, M., Peatman, E., Campbell, J.A., Dermody, T.S., Nusrat, A., Parkos, C.A., 2007. JAM-A regulates permeability and inflammation in the intestine *in vivo*. *J. Exp. Med.* 204 (13), 3067–3076.
- Leeming, G., Meli, M., Cripps, P., Vaughanthomas, A., Lutz, H., Gaskell, R., Kipar, A., 2006. Tracheal organ cultures as a useful tool to study feline herpesvirus 1 infection in respiratory epithelium. *J. Virol. Methods* 138 (1–2), 191–195.
- Makino, A., Shimojima, M., Miyazawa, T., Kato, K., Tohya, Y., Akashi, H., 2006. Junctional adhesion molecule 1 is a functional receptor for feline calicivirus. *J. Virol.* 80 (9), 4482–4490.
- Mandell, K.J., Parkos, C.A., 2005. The JAM family of proteins. *Adv. Drug Deliv. Rev.* 57 (6), 857–867.
- Merle, U., Theilig, F., Fein, E., Gehrke, S., Kallinowski, B., Riedel, H., Bachmann, S., Stremmel, W., Kulaksiz, H., 2007. Localization of the iron-regulatory proteins hemophelin and transferrin receptor 2 to the basolateral membrane domain of hepatocytes. *Histochem. Cell. Biol.* 127 (2), 221–226.
- Moll, R., Franke, W.W., Schiller, D.L., Geiger, B., Krepler, R., 1982. The catalog of human cytokeratins: patterns of expression in normal epithelia, tumors and cultured cells. *Cell* 31 (1), 11–24.
- Munson, L., Chandler, S., Schlafer, D.H., 1998. Cultivation of bovine fetal and adult endometrial epithelial cells. *J. Tissue Cult. Methods* 11 (3), 129–133.
- Ossiboff, R.J., Sheh, A., Shotton, J., Pesavento, P.A., Parker, J.S.L., 2007. Feline caliciviruses (FCVs) isolated from cats with virulent systemic disease possess *in vitro* phenotypes distinct from those of other FCV isolates. *J. Gen. Virol.* 88 (Pt 2), 506–517.
- Parker, J.S., Parrish, C.R., 1997. Canine parvovirus host range is determined by the specific conformation of an additional region of the capsid. *J. Virol.* 71 (12), 9214–9222.
- Parker, J.S., Murphy, W.J., Wang, D., O'Brien, S.J., Parrish, C.R., 2001. Canine and feline parvoviruses can use human or feline transferrin receptors to bind, enter, and infect cells. *J. Virol.* 75 (8), 3896–3902.
- Pesavento, P.A., Chang, K.O., Parker, J.S.L., 2008. Molecular virology of feline calicivirus. *Vet. Clin. North Am. Small Anim. Pract.* 38 (4), 775–786.
- Petkov, S.G., Anderson, G.B., 2008. Culture of porcine embryonic germ cells in serum-supplemented and serum-free conditions: the effects of serum and growth factors on primary and long-term culture. *Clon. Stem Cells* 10 (2), 263–276.

- Rossen, J.W., Kouame, J., Goedheer, A.J., Vennema, H., Rottier, P.J., 2001. Feline and canine coronaviruses are released from the basolateral side of polarized epithelial LLC-PK1 cells expressing the recombinant feline aminopeptidase-N cDNA. *Arch. Virol.* 146 (4), 791–799.
- Sandmeyer, L.S., Keller, C.B., Bienzle, D., 2005. Culture of feline corneal epithelial cells and infection with feline herpesvirus-1 as an investigative tool. *Am. J. Vet. Res.* 66 (2), 205–209.
- Schneeberger, E.E., Lynch, R.D., 2004. The tight junction: a multifunctional complex. *Am. J. Physiol. Cell Physiol.* 286 (6), C1213–C1228.
- Shin, K., Fogg, V.C., Margolis, B., 2006. Tight junctions and cell polarity. *Rev. Cell Dev. Biol.* 22, 207–235.
- Topp, K.S., Rothman, A.L., Lavail, J.H., 1997. Herpes virus infection of RPE and MDCK cells: polarity of infection. *Exp. Eye Res.* 64 (3), 343–354.