

UC Davis

UC Davis Previously Published Works

Title

Does perioperative chemotherapy improve survival in upper tract urothelial carcinoma? A population based analysis

Permalink

<https://escholarship.org/uc/item/8qj5j6pr>

Journal

Oncotarget, 9(27)

ISSN

1949-2553

Authors

Goldberg, Hanan

Klaassen, Zachary

Chandrasekar, Thenappan

et al.

Publication Date

2018-04-10

DOI

10.18632/oncotarget.24694

Copyright Information

This work is made available under the terms of a Creative Commons Attribution License, available at <https://creativecommons.org/licenses/by/4.0/>

Peer reviewed

Does perioperative chemotherapy improve survival in upper tract urothelial carcinoma? A population based analysis

Hanan Goldberg¹, Zachary Klaassen¹, Thenappan Chandrasekar¹, Rashid Sayyid¹, Girish S. Kulkarni¹, Robert J. Hamilton¹ and Neil E. Fleshner¹

¹Division of Urology, Department of Surgical Oncology, Princess Margaret Cancer Centre, University Health Network and the University of Toronto, Toronto, Ontario, Canada

Correspondence to: Hanan Goldberg, email: gohanan@gmail.com

Keywords: upper tract urothelial carcinoma; chemotherapy; cancer specific mortality; other cause mortality

Received: August 15, 2017

Accepted: February 24, 2018

Published: April 10, 2018

Copyright: Goldberg et al. This is an open-access article distributed under the terms of the Creative Commons Attribution License 3.0 (CC BY 3.0), which permits unrestricted use, distribution, and reproduction in any medium, provided the original author and source are credited.

ABSTRACT

Objectives: To evaluate the utilization and outcomes of perioperative chemotherapy in non-metastatic UTUC patients over the past decade using a large national database.

Methods: All patients aged 18 and older diagnosed with non-metastatic UTUC between 2004 and 2013 were identified within the Surveillance, Epidemiology and End Results (SEER) database. Relevant clinical data was collected and predictors of cancer specific mortality (CSM) and other cause mortality (OCM) were analyzed.

Results: The total cohort included 8,762 patients. Of these, 1,402 (16%) patients received chemotherapy, including only 35% of high-risk patients (\geq pT2 or N1). Treated patients had higher CSM (21.3% vs. 13.1%, $p < 0.001$). Predictors of chemotherapy utilization included residence in Midwest states, tumor located in the ureter, higher stage and grade. Predictors of CSM included older age, residence in southern states, receipt of chemotherapy (HR = 1.151, 95% CI: 1.003-1.32, $p = 0.044$), higher stage and grade. OCM was predicted by male gender, older age, ureteral tumor, and higher stage. A subset analysis of patients younger than 65 showed similar predictors, while an analysis of high risk patients demonstrated that chemotherapy receipt did not predict CSM or OCM.

Conclusions: In this large contemporary non-metastatic UTUC cohort, chemotherapy utilization was found to be quite infrequent, but increasing steadily. Perioperative chemotherapy had no effect on CSM in high-risk patients, while correlated to higher CSM in the younger patients.

INTRODUCTION

Upper tract urothelial carcinoma (UTUC) is a relatively rare disease, accounting for less than 5% of all urothelial cancers (UC) and 5-10% of all renal tumors [1, 2]. The role of perioperative chemotherapy, whether adjuvant or neoadjuvant, remains poorly defined. However, utilization of chemotherapy in bladder UC patients has been studied extensively. Randomized controlled trials have demonstrated an overall survival (OS) benefit of cisplatin-based neoadjuvant chemotherapy

for muscle-invasive bladder cancer [3-5]. Moreover, a meta-analysis of 11 randomized controlled trials showed a 5% and 9% improvement in OS and cancer specific survival (CSS), respectively, with neoadjuvant chemotherapy [6]. Similarly, although the evidence for adjuvant chemotherapy in bladder UC is less robust, several trials have exhibited a potential advantage in CSS with adjuvant cisplatin-based chemotherapy in high risk patients (\geq pT3 or pN1) [7-9].

Due to the rarity of UTUC, completion of large prospective studies examining the role of perioperative

chemotherapy has been difficult to achieve. As a result, UTUC has been managed similarly to bladder UC, due to the presumption that it manifests a similar disease biology when compared stage for stage [10]. Subsequently, there has been an increasing trend of chemotherapy utilization in UTUC patients, based on the extrapolation of its benefit in bladder UC. Some studies have demonstrated measurable survival benefits with chemotherapy in metastatic or unresectable UTUC patients [11–13]. However, in non-metastatic UTUC patients, the benefit of perioperative chemotherapy in improving CSS and OS is still controversial. Nearly all available literature on chemotherapy utilization in UTUC was done in the adjuvant setting while only a minority examined its role in the neoadjuvant setting [14–16].

A recently published study looking at SEER-Medicare data assessed perioperative chemotherapy utilization in UTUC patients over the age of 65, showing no added benefit for either neoadjuvant or adjuvant chemotherapy [17]. The objective of the current study is to evaluate the utilization and trends of perioperative chemotherapy in non-metastatic contemporary UTUC patients using a large national database and including patients of all ages, including those younger than 65. Moreover, we aimed to ascertain the predictors of chemotherapy utilization, cancer specific mortality (CSM) and other cause mortality (OCM). One of our goals was to determine whether mortality outcomes were affected by chemotherapy exposure among all patients in general, and specifically among younger (<65) and/or high risk patients.

RESULTS

Clinical characteristics

Table 1 presents the demographics of the entire cohort. Of the 8,762 patients, 1402 (16%) received chemotherapy, of which 495 (35.3%) were younger than 65. Chemotherapy treated patients were younger, more likely to be married, had a larger tumor size, more aggressive stage and grade of disease, and were more likely to be treated with perioperative radiotherapy ($p < 0.001$ for all analyses). Only 35% of the patients with high-risk disease underwent chemotherapy. Median follow-up time was 22 months (range 7-63) for both groups ($p = 0.73$), but a higher proportion of patients treated with chemotherapy died from their disease (298 patients constituting 21.3% vs. 962 patients constituting 13.1%, $p < 0.001$). 30.4% of the chemotherapy treated patients vs. 34.3% of the non-treated patients died from other causes, $p < 0.001$. In patients under the age of 65, CSM was 20.4% vs. 8% ($p < 0.001$) and OCM was 24.2% vs. 18.3% ($p < 0.001$) in the treated vs. non-treated group, respectively.

Chemotherapy utilization

Figure 1 shows that, through the years, the utilization of chemotherapy increased steadily ($p = 0.02$), correlating with an increasing prevalence of higher grade disease ($p < 0.001$).

When assessing predictors of chemotherapy utilization in patients with UTUC (Table 2), older age and residence in western states (vs. Northeast), reduced the likelihood of receiving chemotherapy. On the other hand, residence in Midwest states (vs. Northeast), tumor located in the ureter (vs. renal pelvis), worse stage (T4 vs T1) and grade disease (Undifferentiated vs Well Differentiated), and being treated with radiotherapy increased the likelihood of undergoing chemotherapy.

A subset analysis, specifically for patients with at least 6 months of follow-up after surgery, was performed to overcome the immortal time bias of including patients that died from their disease soon after surgery, or had any complications, precluding them of receiving adjuvant chemotherapy. Even in this subset, the same factors were predictive of chemotherapy utilization without any difference (Table 3).

Predictors of cancer specific mortality

In the model identifying predictors of CSM (Table 4), older age, residence in Southern states (vs. Northeast), receipt of chemotherapy, higher stage (T4 vs T1) and higher grade disease (Undifferentiated vs Well Differentiated) increased CSM. On the contrary, more recent diagnosis, residence in Midwest states (vs. Northeast) and tumor located in the ureter (vs. renal pelvis), was protective for CSM. Similar to the analysis for the entire cohort, in patients younger than 65, receipt of chemotherapy and higher stage disease (T4 vs T1) increased CSM, while more recent disease diagnosis was protective for CSM.

Predictors of other cause mortality

Multivariable Cox proportional hazards model was performed to elucidate the factors predicting OCM (Table 5). Male gender, older age, black race (vs. white), tumor located in the ureter (vs. renal pelvis), and higher stage disease (T4 vs T1) all predicted an increase in OCM. However, race other than black or white (vs. white), residing in the Western or Midwestern states (vs. Northeast), and disease diagnosed more recently all reduced OCM. A subset analysis predicting OCM in patients younger than 65 (Table 5) demonstrated very similar results: older age and higher stage predicted increased OCM, while residing in the Midwest and being diagnosed at an earlier year reduced risk of OCM. However, in patients younger than 65, receipt of chemotherapy was found to increase OCM.

Table 1: Patient Demographics

	Chemotherapy	No Chemotherapy	p-value
Number of patients (%)	1402 (16%)	7360 (84%)	
Mean Age (SD)	67.5 (10.3)	73 (10.6)	<0.001
Patients < 65 years of age (%)	495 (35.3%)	1533 (20.8%)	<0.001
Race (%)			0363
White	81.8%	82.4%	
Black	4.9%	4.1%	
Other	13.3%	13.5%	
Gender (%)			0.105
Male	62.3%	40%	
Female	37.7%	60%	
Marital Status (%)			<0.001
Single	108 (8%)	615 (8.7%)	
Married	976 (72.7%)	4302 (61%)	
Widowed/Divorced	268 (19.8%)	2133 (30.3%)	
Region (%)			<0.001
Northeast	246 (17.5%)	1399 (19%)	
Midwest	217 (15.5%)	749 (10.2%)	
South	378 (27%)	1897 (25.8%)	
West	561 (40%)	3315 (45%)	
Insured (%)	1009 (98.3%)	4970 (98.6%)	0.478
Mean tumor size (cm) (SD)	4.4 (2.6)	3.85 (2.3)	<0.001
Laterality (%)			0.2
Right			
Left	48.3%	49.4%	
Bilateral	51.5%	50.6%	
Location of tumor (%)	0.2%	-	0.55
Renal pelvis	60.2%	61%	
Ureter	39.8%	39%	
Perioperative Radiotherapy	192 (13.8%)	146 (2%)	<0.001
Pathologic Grade (%)			<0.001
Well differentiated	2%	6%	
Moderately differentiated	7.3%	19%	
Poorly differentiated	33.3%	30.8%	
Undifferentiated/anaplastic	57.4%	44.2%	
T stage (%)			<0.001
T1	12.9%	39.3%	
T2	12.6%	20.9%	

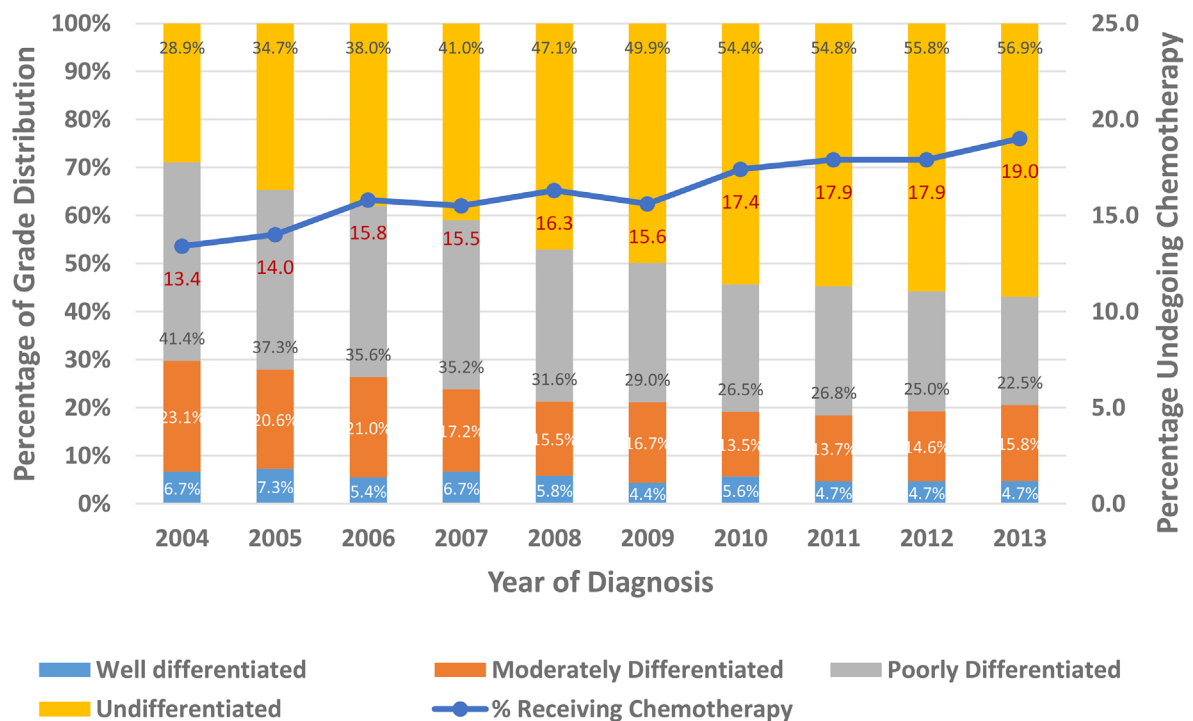
(Continued)

	Chemotherapy	No Chemotherapy	p-value
T3	57.8%	33.1%	
T4	15.8%	6%	
TX	0.9%	0.7%	
N stage (%)			<0.001
N0	71.7%	94.1%	
N1	16%	3.6%	
N2	11.3%	2.1%	
N3	1%	0.1%	
Num. of Patients who developed bladder cancer either before or after UTUC diagnosis, n (%)	288 (20.5%)	1892 (25.7%)	<0.001
Number of primary tumors (SD)	1.6 (0.75)	1.7 (0.81)	<0.001

High-risk patients

According to the NCCN guidelines, in high risk patients ($\geq pT2$ or $\geq pN1$), adjuvant chemotherapy should be considered [18]. Therefore, a subset analysis was also performed specifically for these patients to elucidate

predictors of CSM and OCM, incorporating the role of chemotherapy (Table 6). Older age, disease diagnosis in an earlier year, not residing in Midwestern states and higher stage disease were all predictors of increased CSM and OCM. Tumor located at the renal pelvis and worse grade predicted increased CSM, while being neither white nor



Grade Distribution, $p < 0.001$

Receipt of Chemotherapy, $p = 0.02$

Figure 1: Grade Distribution and Chemotherapy Trends by Year among UTUC patients.

Table 2: Multivariable logistic regression analysis predicting usage of chemotherapy among UTUC patients

	p Value	OR	95.0% CI for OR	
			Lower	Upper
Gender (Female - reference)		REFERENCE		
Male	0.876	1.013	.859	1.195
Age at diagnosis	<0.001	0.944	0.937	0.951
Race (White - reference)		REFERENCE		
Black	0.726	0.935	0.64	1.365
Other	0.319	0.882	0.688	1.13
USA region (Northeast - reference)		REFERENCE		
Midwest	0.017	1.423	1.066	1.9
South	0.317	0.893	0.698	1.144
West	0.037	0.779	0.616	0.985
Insurance (No insurance - reference)		REFERENCE		
Insured	0.288	1.464	0.725	2.958
Primary upper tract site (Renal pelvis -Reference)		REFERENCE		
Ureter Location	0.001	1.341	1.131	1.589
Perioperative Radiotherapy (no therapy - reference)		REFERENCE		
Receiving radiotherapy	<0.001	4.348	3.184	5.938
T stage (T1 - Reference)		REFERENCE		
T2	0.001	1.633	1.233	2.163
T3	<0.001	3.931	3.124	4.946
T4	<0.001	4.530	3.299	6.221
N stage (N0 - Reference)		REFERENCE		
N1	<0.001	3.757	2.884	4.894
N2	<0.001	4.742	3.481	6.458
N3	0.011	4.142	1.387	12.367
Grade (Well Differentiated - Reference)		REFERENCE		
Moderately Differentiated	0.855	0.949	0.539	1.669
Poorly Differentiated	0.135	1.485	0.884	2.494
Undifferentiated	0.011	1.932	1.162	3.213

black, predicted decreased OCM. Chemotherapy was not found to be a significant predictor of either CSM or OCM in this high-risk cohort of patients.

Figure 2 depicts Kaplan Meier (KM) graphs for all subsets of patients stratified by the receipt of chemotherapy. All KM graphs demonstrated that chemotherapy treated patients had worse CSS and either worse or similar OS.

DISCUSSION

Our study demonstrates that approximately 16% of non-metastatic UTUC patients receive chemotherapy. Its utilization has been rising steadily in the last decade, in accordance with the increasing incidence of higher grade disease. Patients undergoing chemotherapy had higher stage and grade disease, likely accounting

Table 3: Multivariable logistic regression analysis predicting usage of chemotherapy among UTUC patients with at least 6 months of follow-up

	p Value	HR	95.0% CI for HR	
			Lower	Upper
Gender (Female - reference)		REFERENCE		
Male	0.953	0.994	.825	1.199
Age at diagnosis	<0.0001	0.944	0.936	0.952
Race (White - reference)		REFERENCE		
Black	0.854	0.96	0.623	1.480
Other	0.392	0.886	0.671	1.169
USA region (Northeast - reference)		REFERENCE		
Midwest	0.029	1.431	1.037	1.977
South	0.64	0.934	0.701	1.244
West	0.049	0.761	0.58	0.999
Insurance (No insurance - reference)		REFERENCE		
Insured	0.356	1.473	0.647	3.354
Primary upper tract site (Renal pelvis -Reference)		REFERENCE		
Ureter Location	0.002	1.365	1.125	1.656
Perioperative Radiotherapy (no therapy - reference)		REFERENCE		
Receiving radiotherapy	<0.001	4.62	3.271	6.524
T stage (T1 - Reference)		REFERENCE		
T2	0.001	1.716	1.25	2.356
T3	<0.0001	3.835	2.952	4.983
T4	<0.0001	4.82	3.373	6.889
N stage (N0 - Reference)		REFERENCE		
N1	<0.0001	4.303	3.164	5.851
N2	<0.0001	4.938	3.509	6.95
N3	0.033	3.855	1.118	13.289
Grade (Well Differentiated - Reference)		REFERENCE		
Moderately Differentiated	0.942	1.025	0.521	2.017
Poorly Differentiated	0.195	1.514	0.808	2.835
Undifferentiated	0.022	2.047	1.107	3.788

for higher CSM and OCM. In patients younger than 65 years old, CSM and OCM were even higher in the chemotherapy group, suggesting younger patients receiving chemotherapy had worse pathology. While perioperative chemotherapy receipt was found to be correlated to increased CSM, it was not shown to be a significantly correlated to increased OCM. Looking specifically at high-risk patients who would potentially benefit from chemotherapy, it was not found to be a significant predictor of either CSM or OCM.

Two groups have recently published their results on a large cohort of patients from the National Cancer Database. Both studies showed that predictors for chemotherapy utilization were younger age, tumor located in the ureter and higher stage and grade, [19, 20] corroborating our results. Furthermore, Cohen et al. have recently published their findings regarding usage of perioperative chemotherapy in a large cohort from the SEER-Medicare database, showing a very similar OCM in chemotherapy treated patients [17]. Although their

Table 4: Fine and Gray Competing risk analysis predicting Cancer Specific Mortality among all patients and patients younger than 65

	All Patients				Patients Younger than 65			
	p Value	HR	95.0% CI for HR		p Value	HR	95.0% CI for HR	
			Lower	Upper			Lower	Upper
Gender (Female - reference)		REFERENCE				REFERENCE		
Male	0.235	1.064	0.960	1.180	0.458	1.108	0.845	1.454
Age at diagnosis	<0.0001	1.022	1.016	1.027	0.797	0.997	0.976	1.019
Race (White - reference)		REFERENCE				REFERENCE		
Black	0.226	1.160	0.911	1.480	.568	0.860	0.514	1.441
Other	0.584	0.958	0.822	1.117	0.179	1.264	0.898	1.779
USA region (Northeast - reference)		REFERENCE				REFERENCE		
Midwest	0.043	0.815	0.667	0.997	0.383	0.784	0.455	1.354
South	0.021	1.222	1.030	1.451	0.261	1.310	0.818	2.097
West	0.087	1.150	0.979	1.349	.305	1.261	0.809	1.966
Year of diagnosis	<0.0001	0.903	0.887	0.920	<0.0001	0.882	0.840	0.925
Primary upper tract site (Renal pelvis -Reference)		REFERENCE				REFERENCE		
Ureter Location	0.003	0.845	0.755	0.946	0.344	0.864	0.638	1.170
Chemo therapy (no therapy - reference)		REFERENCE				REFERENCE		
Receiving chemotherapy	0.044	1.151	1.003	1.320	0.038	1.380	1.018	1.871
T stage (T1 - Reference)		REFERENCE				REFERENCE		
T2	.005	1.284	1.075	1.534	.008	1.869	1.176	2.972
T3	<0.0001	1.998	1.732	2.305	<0.0001	2.565	1.715	3.837
T4	<0.0001	2.932	2.447	3.510	<0.0001	4.643	2.814	7.659
N stage (N0 - Reference)		REFERENCE				REFERENCE		
N1	<0.0001	1.724	1.475	2.016	0.040	1.486	1.018	2.168
N2	0.004	1.458	1.182	1.799	0.020	1.796	1.089	2.962
N3	0.006	2.447	1.473	4.067	0.001	3.201	1.590	6.446
Grade (Well Differentiated - Reference)		REFERENCE				REFERENCE		
Moderately Differentiated	0.310	1.260	0.805	1.977	0.823	1.131	0.384	3.337
Poorly Differentiated	<0.001	2.182	1.431	3.330	0.118	2.224	0.813	6.194
Undifferentiated	<0.001	2.206	1.449	3.357	0.082	2.448	0.891	6.725

analyses were restricted to patients older than 65, they also demonstrated that perioperative chemotherapy was demonstrated not to affect OCM and worsen CSM [17]. A large number of additional studies have also shown that perioperative chemotherapy predicts higher CSM and either worse or have no effect on OCM [21–25]. However,

in contradiction to our findings, several other studies have showed an improved OS and CSS with chemotherapy, [16, 26, 27] albeit only in high-risk patients (pT3+) and in small retrospective series. Leow et al. published a meta-analysis on perioperative chemotherapy in UTUC patients, [14] and although the authors concluded that there appears

Table 5: Multivariable Cox proportional hazard model predicting Other Cause Mortality among all UTUC patients and patients younger than 65

	All Patients				Patients Younger than 65			
	p Value	HR	95.0% CI for HR		p Value	HR	95.0% CI for HR	
			Lower	Upper			Lower	Upper
Gender (Female - reference)		REFERENCE				REFERENCE		
Male	0.006	1.091	1.025	1.161	0.625	0.959	0.809	1.136
Age at diagnosis	<0.0001	1.028	1.025	1.032	0.001	1.025	1.010	1.040
Race (White - reference)		REFERENCE				REFERENCE		
Black	<0.0001	1.312	1.136	1.515	0.270	1.191	0.873	1.625
Other	0.031	0.899	0.817	0.990	0.639	0.945	0.745	1.198
USA region (Northeast - reference)		REFERENCE				REFERENCE		
Midwest	<0.0001	0.541	0.482	0.607	<0.0001	0.536	0.384	0.749
South	0.582	0.974	0.887	1.070	0.627	0.938	0.724	1.215
West	<0.0001	0.820	0.752	0.896	0.268	0.870	0.679	1.113
Year of diagnosis	<0.0001	0.873	0.863	0.883	<0.0001	0.844	0.818	0.872
Primary upper tract site (Renal pelvis -Reference)		REFERENCE				REFERENCE		
Ureter Location	0.005	1.096	1.029	1.167	0.324	1.093	0.916	1.303
Chemo therapy (no therapy - reference)		REFERENCE				REFERENCE		
Receiving chemotherapy	0.086	1.080	0.989	1.180	0.027	1.242	1.025	1.505
T stage (T1 - Reference)		REFERENCE				REFERENCE		
T2	0.004	1.147	1.044	1.260	<0.0001	1.606	1.237	2.085
T3	<0.0001	1.438	1.328	1.558	<0.0001	1.837	1.450	2.328
T4	<0.0001	1.854	1.657	2.075	<0.0001	2.600	1.879	3.597
N stage (N0 - Reference)		REFERENCE				REFERENCE		
N1	<0.0001	1.387	1.240	1.552	0.003	1.467	1.139	1.888
N2	0.008	1.214	1.051	1.402	0.244	1.237	0.865	1.770
N3	0.044	1.533	1.011	2.323	0.022	2.125	1.112	4.060
Grade (Well Differentiated - Reference)		REFERENCE				REFERENCE		
Moderately Differentiated	0.032	0.836	0.709	0.985	0.400	0.827	0.531	1.287
Poorly Differentiated	0.931	1.007	0.863	1.174	0.336	1.226	0.810	1.855
Undifferentiated	0.934	0.994	0.854	1.156	0.516	1.145	0.761	1.723

to be an OS and CSS benefit for adjuvant chemotherapy, they also noted that the retrospective nature of the studies and their small sample sizes limited the strength of the evidence substantially [14]. However, Seisen et al. recently published their findings on chemotherapy utilization in a large cohort of high-risk UTUC patients

(3253 patients) from the National Cancer Database, and they demonstrated a significant OS advantage for high-risk patients undergoing chemotherapy [19].

The reasons for the contradicting results in the literature regarding perioperative chemotherapy benefit in non-metastatic UTUC patients are speculative at best. Small,

Table 6: Fine and Gray Competing risk analysis predicting Cancer Specific Mortality and Cox proportional hazard model predicting Other Cause Mortality among high-risk UTUC patients

	Competing Risk Analysis for CSM				Cox Proportional Hazards for OCM			
	p Value	HR	95.0% CI for HR		p Value	HR	95.0% CI for HR	
			Lower	Upper			Lower	Upper
Gender (Female - reference)		REFERENCE				REFERENCE		
Male	0.145	1.09	0.971	1.224	0.241	1.045	0.971	1.124
Age at diagnosis	<0.001	1.013	1.007	1.019	<0.001	1.021	1.017	1.025
Race (White - reference)		REFERENCE				REFERENCE		
Black	0.672	1.063	0.801	1.41	0.103	1.155	0.971	1.374
Other	0.174	0.888	0.748	1.054	0.002	0.838	0.749	0.937
USA region (Northeast - reference)		REFERENCE				REFERENCE		
Midwest	0.031	0.781	0.624	0.978	<0.001	0.518	0.452	0.594
South	0.019	1.257	1.038	1.522	0.233	0.935	0.837	1.044
West	0.229	1.117	0.933	1.338	<0.001	0.811	0.731	0.900
Year of diagnosis	<0.001	0.908	0.889	0.926	<0.001	0.887	0.875	0.899
Primary upper tract site (Renal pelvis -Reference)		REFERENCE				REFERENCE		
Ureter Location	0.0339	0.871	0.766	0.99	0.1	1.065	0.988	1.148
Chemo therapy (no therapy - reference)		REFERENCE				REFERENCE		
Receiving chemotherapy	0.356	1.07	0.927	1.234	0.873	1.008	0.917	1.107
T stage (T1 - Reference)		REFERENCE				REFERENCE		
T2	0.506	0.864	0.563	1.328	0.585	0.922	0.687	1.235
T3	0.138	1.364	0.905	2.056	0.34	1.149	0.864	1.526
T4	0.0007	2.048	1.352	3.103	.007	1.495	1.118	1.999
N stage (N0 - Reference)		REFERENCE				REFERENCE		
N1	<0.001	1.659	1.4	1.965	<0.001	1.346	1.195	1.516
N2	0.0019	1.4	1.132	1.73	0.028	1.180	1.018	1.367
N3	0.0005	2.384	1.458	3.896	0.048	1.521	1.003	2.305
Grade (Well Differentiated - Reference)		REFERENCE				REFERENCE		
Moderately Differentiated	0.827	1.074	0.566	2.036	0.785	0.961	0.722	1.279
Poorly Differentiated	0.023	2.004	1.099	3.655	0.147	1.219	0.933	1.593
Undifferentiated	0.035	1.901	1.045	3.457	0.284	1.156	0.886	1.509

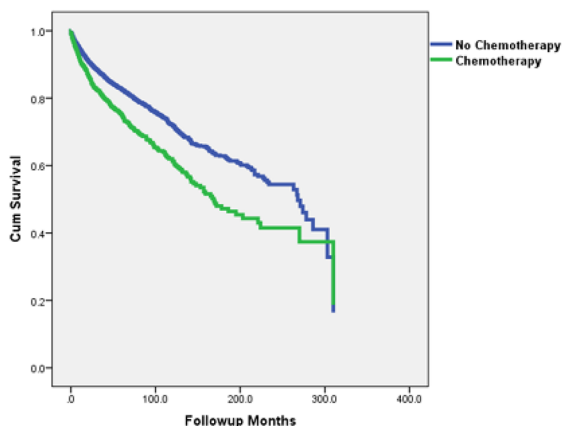
underpowered sample sizes and selection bias can potentially explain at least some of the inconsistent results. Moreover, the non-standardized use of chemotherapy for high-risk UTUC patients could also account for the lack of consistency in the published literature. In our study population, only 35% of high-risk patients received chemotherapy. One

possible reason for the inconsistent usage could be due to the nephrotoxicity caused by cisplatin. Oncologists may refrain from starting chemotherapy in patients with a solitary kidney after a nephroureterectomy. These patients already have reduced OS due to their aggressive disease, and adding chemotherapy, with its associated toxicity to these patients

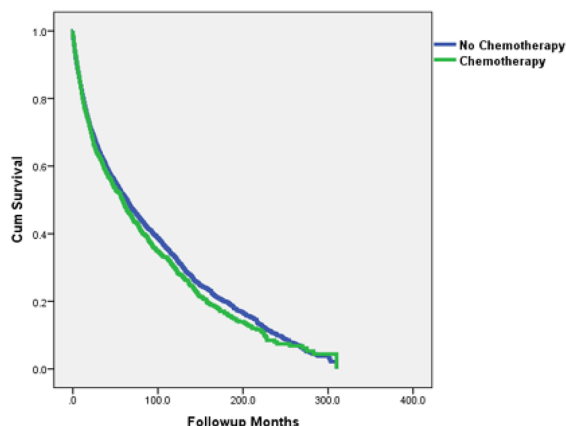
with an initial renal insult, might result in a further reduction in their CSS and OS as well as impact their renal function [25]. Another reason for the contradicting results may be

the lack of standardization of type, dosage and duration of chemotherapy in the different studies, potentially impacting CSS and OS.

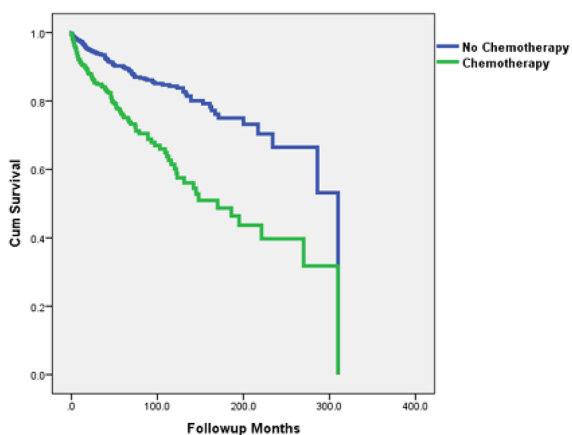
A Kaplan Meier CSS for all patients, log rank $p < 0.001$



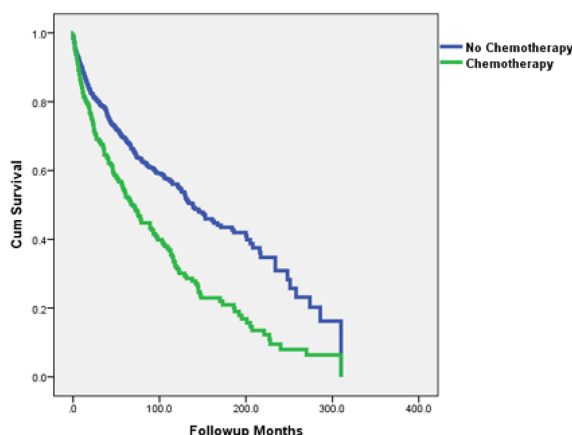
B Kaplan Meier OS for all patients, log rank $p = 0.077$



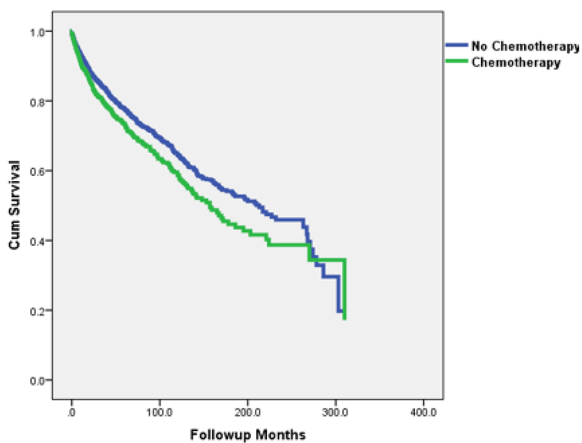
C Kaplan Meier CSS for patients younger than 65, log rank $p < 0.001$



D Kaplan Meier OS for patients younger than 65, log rank $p < 0.001$



E Kaplan Meier CSS for patients with pT2 or N1 & above, log rank $p = 0.001$



F Kaplan Meier OS for patients with pT2 or N1 & above, log rank $p = 0.454$

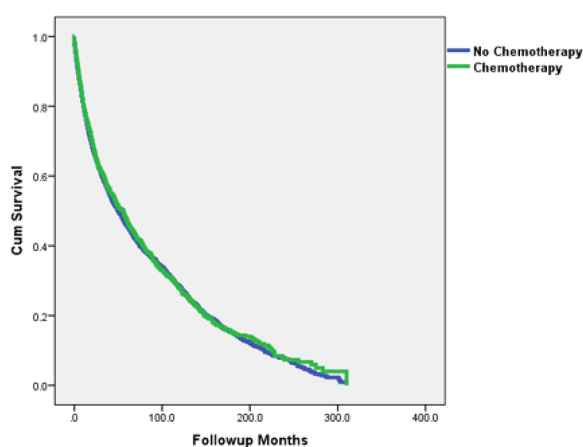


Figure 2: Kaplan Meier Graphs depicting Cancer Specific Survival (CSS) and Overall Survival (OS) for all subset of UTUC patients treated and not treated with chemotherapy.

Most of the predictors of chemotherapy utilization in our data can be intuitively explained. These include younger age, having a disease with higher stage and grade, and being treated with radiotherapy as an adjunct to surgery, due to a more aggressive disease. Tumors located at the ureter were also found to predict chemotherapy administration. This is due to the assumption that ureteral tumors were considered to have worse outcomes than renal pelvic tumors [28–30]. The proposed logic for this assumption was that the renal parenchyma played a protective role, preventing tumor invasion and progression to T3 disease and beyond. However, the issue of whether renal pelvic or ureteral tumors result in worse outcomes in UTUC has been controversial for some time [30]. There have been contradicting studies showing ureteral tumors [28, 29] and renal pelvis tumors [31] having worse outcomes.

Predictors of increased CSM in non-metastatic UTUC patients not surprisingly included older age, being diagnosed in an earlier year, and higher stage and grade disease. Interestingly, patients residing in the southern US were found to be at significantly higher risk for CSM than those residing in the Northeastern states. While we can only speculate on the reason for this, Jemal et al. have shown regional variation in prostate cancer mortality with a correlation to healthcare access [32]. They also demonstrated that prostate cancer death rates were higher in non-metropolitan compared to metropolitan regions [32]. Moreover, Liff et al. had demonstrated that patients living in rural, nonurban areas had worse disease at presentation due to poorer access care [33]. We can carefully extrapolate from these studies and surmise that UTUC patients from the southern states presented at a higher stage and grade, and therefore had increased CSM. An additional predictor of CSM was tumor located at the renal pelvis, supporting the published evidence regarding worse outcomes for this tumor location [31]. Chemotherapy, which is usually given to patients with a more advanced disease, was also demonstrated as a predictor of increased CSM. One possible explanation for this is that its benefit was not substantial enough to overcome the poor features of the aggressive disease. Supporting this was the fact that the odds ratio for higher stage and grade were considerably greater than for chemotherapy receipt, indicating that they drove the mortality more than chemotherapy receipt itself.

In a similar manner, most of the results of the model predicting OCM can also be intuitively explained. These include male gender, older age, diagnosis at an earlier year, and worse stage. Of special note, ureteral tumors were demonstrated to increase the chance of a patient dying from other causes. This is in accordance with renal pelvic tumors being shown in our data and other studies to increase CSM [31]. Interestingly, chemotherapy was shown to increase OCM only in patients younger than 65, suggesting that younger patients who underwent

chemotherapy had either worse disease than the older population, or that the toxicity of chemotherapy was more substantial in the younger population. However, the results of the subset analysis of high-risk patients demonstrated no benefit from chemotherapy receipt.

The limitations of our study include its retrospective design and use of administrative datasets that lack in detailed specificity regarding a number of covariates. As in all large administrative datasets studies, there is a clear selection bias of the patients included in this study. Residual unmeasured confounding may have impacted some or all of the outcomes presented in this cohort. Without a doubt, patients receiving chemotherapy had worse disease as was shown in our study. We attempted to take this into account using multivariable analyses and, sensitivity analyses for high risk patients only. We also lacked data on the renal function of these patients, which might have precluded a significant proportion of them from receiving chemotherapy, and this was could not be taken into account in the models. Additionally, we lacked information on the protocol of chemotherapy that was given, its timing (whether neoadjuvant or adjuvant), its completion, tolerability and complications. However, Cohen's et al. recent study, showed a 1.8% utilization of neoadjuvant chemotherapy in the last decade [17], therefore, we can carefully assume that a significant majority of our patients underwent adjuvant rather than neoadjuvant chemotherapy. Furthermore, a recent study comparing SEER treatment data with Medicare claims (limited to patients over 65) demonstrated an overall sensitivity of SEER data to identify chemotherapy in 68% of cases, while the overall positive predictive value was high (>85%) [34]. Unfortunately, information regarding the type of surgery, whether radical nephroureterectomy or a kidney sparing procedure, was mostly unavailable. There is also lack of data regarding the percentage of lymphadenectomy that was performed and the number of nodes removed. Additionally, the SEER database lacks data on comorbidities (including details on smoking), which can greatly impact the decision to give chemotherapy and OCM. Moreover, the tumor grade variable in SEER is not the same as the WHO/ISUP tumor grading system, but fortunately enough, they both correlate quite well [35]. Another important limitation is that SEER database includes data from both academic and community centers, and does not capture the surgical volume and the training levels of surgeons. Information on previous endoscopic management of ureteric or renal pelvis tumors is also not available. This could have provided additional details and enabled further data granularity for the multivariable analyses. Finally, our database includes only patients diagnosed up until 2013. It is probable, based on the trends we saw in our dataset, that CSS and OS have improved since 2013.

The strengths of our study include the fact that it is a contemporary update of a population based database with

a large cohort of patients, especially when considering the rarity of this disease. Moreover, as opposed to previous study using SEER-Medicare [17], we have also reported data on patients younger than 65, giving a more extensive description of the effect perioperative chemotherapy has on disease outcomes in patients of all ages. This study exhibits a real world multicenter experience and, despite its limitations, represents contemporary evidence regarding utilization and outcomes of perioperative chemotherapy in all UTUC patients. Our data also add to the growing body of knowledge of UTUC by showing that chemotherapy predicts worse CSM and OCM for younger patients, while unfortunately having no beneficial effect on CSM and OCM in high risk patients.

In conclusion, in this large contemporary UTUC cohort, including patients of all ages and stages, chemotherapy was found to be utilized quite infrequently, but its utilization is increasing steadily. Moreover, it was found to predict higher CSM, while mostly not affecting OCM, regardless if they were high-risk or younger than 65. Despite the rarity of this disease, multicenter prospective randomized controlled trials with standardized chemotherapy protocols should be performed to determine the true effect of perioperative chemotherapy.

MATERIALS AND METHODS

Data collection

All patients aged 18 and older diagnosed with UTUC (International classification of diseases for oncology-2, C65.9 and C66.9 codes) between 1988 and 2013 were identified within the Surveillance, Epidemiology and End Results (SEER) cancer registry. The SEER database reports cancer specific outcomes from various geographic areas, representing 28% of the US population [36]. Demographic variables collected included age at diagnosis, gender, race, marital status, geographic location, year of diagnosis and insurance status. Clinical factors of interest included mean tumor size, tumor laterality and location (renal pelvis or ureter), use of perioperative radiation, chemotherapy, or surgical intervention (nephroureterectomy or ureterectomy), and median follow-up time. Pathological staging was based on the TNM staging system (6th edition – 2002) and tumor grade was defined as 1 (well differentiated), 2 (moderately differentiated), 3 (poorly differentiated) and 4 (undifferentiated), consistent with SEER grading in its most recent update.

Patient cohort

The initial cohort included 20,407 patients. However, to determine the efficacy of chemotherapy in a cohort of strictly non-metastatic patients, patients coded as Mx or M1 were eliminated from our analysis.

Additionally, we excluded 942 patients who were not operated at all, and we were left with 8,762 patients diagnosed between 2004 and 2013. Analyzed patients were divided into two groups: those who received chemotherapy versus those that did not receive chemotherapy.

Statistical analysis

We utilized descriptive analyses (mean with standard deviation) for continuous variables, proportions for discrete variables, and comparative tests (chi-square test for discrete variables and Kruskal–Wallis test for continuous variables) in this study. Kaplan–Meier analysis (log rank test) was used to evaluate OS and CSS based on chemotherapy status in both groups. Multivariable logistic regression analyses were performed to identify factors predicting utilization of chemotherapy. Fine and Gray competing risk proportional hazards regressions were used to ascertain independent predictors of CSM and multivariable Cox proportional hazards analyses were implemented to identify predictors of OCM. Covariates in all models included gender, age, race (white, black or other), US geographic location (Northeast, Midwest, South, or West), year of diagnosis (continuous), tumor location (renal pelvis or ureter), tumor stage (pT-stage and pN-stage) and grade, and use of perioperative chemotherapy. Subset analyses for patients younger than 65 and for high-risk patients (\geq pT2 or pN1) were also performed to ascertain their specific predictors of CSM and OCM. Statistical tests were two-tailed and a p-value <0.05 was considered statistically significant. All analyses were conducted using the SPSS software version 23.0 (SPSS Inc., Chicago, IL) and SAS 9.4 (SAS Institute, Cary, North Carolina).

Abbreviations

CSS = cancer specific survival, CSM = cancer specific mortality, KM = Kaplan Meier, OCM = other cause mortality, OS = overall survival, SEER = Surveillance, Epidemiology and End Results, UC = urothelial carcinoma, UTUC = upper tract urothelial carcinoma.

Author contributions

Design and conception: HG, TC, ZK, GK, NF.
Data collection: HG, TC, ZK, RS.
Writing of manuscript: HG, TC, ZK.
Editing and reviewing of manuscript: GK, RH, NF, RS.

CONFLICTS OF INTEREST

None.

FINANCIAL DISCLOSURE

This research did not receive any specific grant from funding agencies in the public, commercial, or not-for-profit sectors.

REFERENCES

1. Huben RP, Mounzer AM, Murphy GP. Tumor grade and stage as prognostic variables in upper tract urothelial tumors. *Cancer*. 1988; 62:2016–20.
2. Rouprêt M, Babjuk M, Compérat E, Zigeuner R, Sylvester RJ, Burger M, Cowan NC, Böhle A, Van Rhijn BW, Kaasinen E, Palou J, Shariat SF. European Association of Urology Guidelines on Upper Urinary Tract Urothelial Cell Carcinoma: 2015 Update. *Eur Urol*. 2015; 68:868–79.
3. Grossman HB, Natale RB, Tangen CM, Speights VO, Vogelzang NJ, Trump DL, deVere White RW, Sarosdy MF, Wood DP Jr, Raghavan D, Crawford ED. Neoadjuvant chemotherapy plus cystectomy compared with cystectomy alone for locally advanced bladder cancer. *N Engl J Med*. 2003; 349:859–66.
4. Neoadjuvant cisplatin, methotrexate, and vinblastine chemotherapy for muscle-invasive bladder cancer: a randomised controlled trial. International collaboration of trialists. *Lancet*. 1999; 354:533–40.
5. Griffiths G, Hall R, Sylvester R, Raghavan D, Parmar MK, International Collaboration of Trialists; Medical Research Council Advanced Bladder Cancer Working Party (now the National Cancer Research Institute Bladder Cancer Clinical Studies Group); European Organisation for Research and Treatment of Cancer Genito-Urinary Tract Cancer Group; Australian Bladder Cancer Study Group; National Cancer Institute of Canada Clinical Trials Group; Finnbladder; Norwegian Bladder Cancer Study Group, and Club Urologico Espanol de Tratamiento Oncologico Group. International phase III trial assessing neoadjuvant cisplatin, methotrexate, and vinblastine chemotherapy for muscle-invasive bladder cancer: long-term results of the BA06 30894 trial. *J Clin Oncol*. 2011; 29:2171–77.
6. Vale CL, and Advanced Bladder Cancer (ABC) Meta-analysis Collaboration. Neoadjuvant chemotherapy in invasive bladder cancer: update of a systematic review and meta-analysis of individual patient data advanced bladder cancer (ABC) meta-analysis collaboration. *Eur Urol*. 2005; 48:202–05.
7. Vale CL, and Advanced Bladder Cancer (ABC) Meta-analysis Collaboration. Adjuvant chemotherapy in invasive bladder cancer: a systematic review and meta-analysis of individual patient data Advanced Bladder Cancer (ABC) Meta-analysis Collaboration. *Eur Urol*. 2005; 48:189–99.
8. Freiha F, Reese J, Torti FM. A randomized trial of radical cystectomy versus radical cystectomy plus cisplatin, vinblastine and methotrexate chemotherapy for muscle invasive bladder cancer. *J Urol*. 1996; 155:495–99.
9. Stöckle M, Meyenburg W, Wellek S, Voges G, Gertenbach U, Thüroff JW, Huber C, Hohenfellner R. Advanced bladder cancer (stages pT3b, pT4a, pN1 and pN2): improved survival after radical cystectomy and 3 adjuvant cycles of chemotherapy. Results of a controlled prospective study. *J Urol*. 1992; 148:302–06.
10. Moussa S, Yafi FA, El-Hakim A, Fahmy N, Aprikian A, Tanguay S, Anidjar M, Kassouf W. Outcome of surgical treatment of patients with upper versus lower urinary tract urothelial carcinoma: stage-by-stage comparison. *Urol Int*. 2010; 84:50–55.
11. Tannock I, Gospodarowicz M, Connolly J, Jewett M. M-VAC (methotrexate, vinblastine, doxorubicin and cisplatin) chemotherapy for transitional cell carcinoma: the Princess Margaret Hospital experience. *J Urol*. 1989; 142:289–92.
12. Kikuchi E, Miyazaki J, Yuge K, Hagiwara M, Ichioka D, Inoue T, Kageyama S, Sugimoto M, Mitsuzuka K, Matsui Y, Yamamoto S, Kinoshita H, Wakeda H, et al. Do metastatic upper tract urothelial carcinoma and bladder carcinoma have similar clinical responses to systemic chemotherapy? A Japanese multi-institutional experience. *Jpn J Clin Oncol*. 2016; 46:163–69.
13. Seisen T, Jindal T, Karabon P, Sood A, Bellmunt J, Rouprêt M, Leow JJ, Vetterlein MW, Sun M, Alanee S, Choueiri TK, Trinh QD, Menon M, Abdollah F. Efficacy of Systemic Chemotherapy Plus Radical Nephroureterectomy for Metastatic Upper Tract Urothelial Carcinoma. *Eur Urol*. 2017; 71:714–18.
14. Leow JJ, Martin-Doyle W, Fay AP, Choueiri TK, Chang SL, Bellmunt J. A systematic review and meta-analysis of adjuvant and neoadjuvant chemotherapy for upper tract urothelial carcinoma. *Eur Urol*. 2014; 66:529–41.
15. Matin SF, Margulis V, Kamat A, Wood CG, Grossman HB, Brown GA, Dinney CP, Millikan R, Siefker-Radtke AO. Incidence of downstaging and complete remission after neoadjuvant chemotherapy for high-risk upper tract transitional cell carcinoma. *Cancer*. 2010; 116:3127–34.
16. Porten S, Siefker-Radtke AO, Xiao L, Margulis V, Kamat AM, Wood CG, Jonasch E, Dinney CP, Matin SF. Neoadjuvant chemotherapy improves survival of patients with upper tract urothelial carcinoma. *Cancer*. 2014; 120:1794–99.
17. Cohen A, Kuchta K, Park S. Neoadjuvant and adjuvant chemotherapy use in upper tract urothelial carcinoma. *Urol Oncol*. 2017; 35:322–27.
18. Network NC. Bladder cancer (Version 2.2017). 2017. https://www.nccn.org/professionals/physician_gls/pdf/bladder.pdf.
19. Seisen T, Krasnow RE, Bellmunt J, Rouprêt M, Leow JJ, Lipsitz SR, Vetterlein MW, Preston MA, Hanna N, Kibel AS, Sun M, Choueiri TK, Trinh QD, Chang SL. Effectiveness of adjuvant chemotherapy after radical nephroureterectomy for locally advanced and/or positive regional lymph node upper tract urothelial carcinoma. *J Clin Oncol*. 2017; 35:852–60.

20. Gin GE, Ruel NH, Kardos SV, Sfakianos JP, Uchio E, Lau CS, Yuh BE. Utilization of perioperative systemic chemotherapy in upper tract urothelial carcinoma. *Urol Oncol.* 2017; 35:192–200.
21. Shirotake S, Kikuchi E, Tanaka N, Matsumoto K, Miyazaki Y, Kobayashi H, Ide H, Obata J, Hoshino K, Kaneko G, Hagiwara M, Kosaka T, Kanao K, et al. Impact of an adjuvant chemotherapeutic regimen on the clinical outcome in high risk patients with upper tract urothelial carcinoma: a Japanese multi-institution experience. *J Urol.* 2015; 193:1122–28.
22. Yafi FA, Tanguay S, Rendon R, Jacobsen N, Fairey A, Izawa J, Kapoor A, Black P, Lacombe L, Chin J, So A, Lattouf JB, Bell D, et al. Adjuvant chemotherapy for upper-tract urothelial carcinoma treated with nephroureterectomy: assessment of adequate renal function and influence on outcome. *Urol Oncol.* 2014; 32:31.e17–24.
23. Lee SE, Byun SS, Park YH, Chang IH, Kim YJ, Hong SK. Adjuvant chemotherapy in the management of pT3N0M0 transitional cell carcinoma of the upper urinary tract. *Urol Int.* 2006; 77:22–26.
24. Helleenthal NJ, Shariat SF, Margulis V, Karakiewicz PI, Roscigno M, Bolenz C, Remzi M, Weizer A, Zigeuner R, Bensalah K, Ng CK, Raman JD, Kikuchi E, et al. Adjuvant chemotherapy for high risk upper tract urothelial carcinoma: results from the Upper Tract Urothelial Carcinoma Collaboration. *J Urol.* 2009; 182:900–06.
25. Vassilakopoulou M, de la Motte Rouge T, Colin P, Ouzzane A, Khayat D, Dimopoulos MA, Papadimitriou CA, Bamias A, Pignot G, Nouhaud FX, Hurel S, Guy L, Bigot P, et al, and French Collaborative National Database on UUT-UCC. Outcomes after adjuvant chemotherapy in the treatment of high-risk urothelial carcinoma of the upper urinary tract (UUT-UC): results from a large multicenter collaborative study. *Cancer.* 2011; 117:5500–08.
26. Huang YC, Chen MF, Shi CS, Shindel AW, Huang CE, Pang ST, Chuang CK, Chen CS, Chang YH, Lin WY, Ho DR, Chin CC, Kuo YH, Wu CF. The efficacy of postoperative adjuvant chemotherapy for patients with pT3N0M0 upper tract urothelial carcinoma. *J Urol.* 2015; 194:323–29.
27. Lucca I, Kassouf W, Kapoor A, Fairey A, Rendon RA, Izawa JI, Black PC, Fajkovic H, Seitz C, Remzi M, Nyirady P, Rouprêt M, Margulis V, et al. The role of adjuvant chemotherapy for lymph node-positive upper tract urothelial carcinoma following radical nephroureterectomy: a retrospective study. *BJU Int.* 2015; 116:72–78.
28. Park J, Ha SH, Min GE, Song C, Hong B, Hong JH, Kim CS, Ahn H. The protective role of renal parenchyma as a barrier to local tumor spread of upper tract transitional cell carcinoma and its impact on patient survival. *J Urol.* 2009; 182:894–99.
29. Ouzzane A, Colin P, Xylinas E, Pignot G, Ariane MM, Saint F, Hoarau N, Adam E, Azemar MD, Bensadoun H, Cormier L, Cussenot O, Houlgatte A, et al, and French Collaborative National Database on UUT-UC. Ureteral and multifocal tumours have worse prognosis than renal pelvic tumours in urothelial carcinoma of the upper urinary tract treated by nephroureterectomy. *Eur Urol.* 2011; 60:1258–65.
30. Lughezzani G, Burger M, Margulis V, Matin SF, Novara G, Roupert M, Shariat SF, Wood CG, Zigeuner R. Prognostic factors in upper urinary tract urothelial carcinomas: a comprehensive review of the current literature. *Eur Urol.* 2012; 62:100–14.
31. van der Poel HG, Antonini N, van Tinteren H, Horenblas S. Upper urinary tract cancer: location is correlated with prognosis. *Eur Urol.* 2005; 48:438–44.
32. Jemal A, Ward E, Wu X, Martin HJ, McLaughlin CC, Thun MJ. Geographic patterns of prostate cancer mortality and variations in access to medical care in the United States. *Cancer Epidemiol Biomarkers Prev.* 2005; 14:590–95.
33. Liff JM, Chow WH, Greenberg RS. Rural-urban differences in stage at diagnosis. Possible relationship to cancer screening. *Cancer.* 1991; 67:1454–59.
34. Noone AM, Lund JL, Mariotto A, Cronin K, McNeel T, Deapen D, Warren JL. Comparison of SEER Treatment Data With Medicare Claims. *Med Care.* 2016; 54:e55–64.
35. Charlton ME, Adamo MP, Sun L, Deorah S. Bladder cancer collaborative stage variables and their data quality, usage, and clinical implications: a review of SEER data, 2004–2010. *Cancer.* 2014; 120:S3815–25.
36. Howlader NN, Krapcho M, Miller D, Bishop K, Altekruse SF, Kosary CL, Yu M, Ruhl J, Tatalovich Z, Mariotto A, Lewis DR, Chen HS, Feuer EJ, Cronin KA (eds). SEER Cancer Statistics Review, 1975–2013, National Cancer Institute. 2016. https://seer.cancer.gov/csr/1975_2013/.