

UC Irvine

UC Irvine Previously Published Works

Title

An "epitomic" analysis of the specificity of conformation-dependent, anti-A β amyloid monoclonal antibodies.

Permalink

<https://escholarship.org/uc/item/8kz7w1r6>

Authors

Reyes-Ruiz, Jorge Mauricio
Nakajima, Rie
Baghallab, Ibtisam
et al.

Publication Date

2021

DOI

10.1074/jbc.ra120.015501

Copyright Information

This work is made available under the terms of a Creative Commons Attribution License, available at <https://creativecommons.org/licenses/by/4.0/>

Peer reviewed



An “epitomic” analysis of the specificity of conformation-dependent, anti-A β amyloid monoclonal antibodies

Received for publication, August 4, 2020, and in revised form, December 3, 2020 Published, Papers in Press, December 9, 2020,
<https://doi.org/10.1074/jbc.RA120.015501>

Jorge Mauricio Reyes-Ruiz¹, Rie Nakajima², Ibtisam Baghallab³, Luki Goldschmidt⁴, Justyna Sosna¹,
Phuong Nguyen Mai Ho¹, Taha Kumosani³, Philip L. Felgner², and Charles Glabe^{1,*}

From the ¹Department of Molecular Biology and Biochemistry, ²Department of Physiology and Biophysics, Vaccine Research and Development Center, University of California Irvine, Irvine, California, USA; ³Biochemistry Department, Faculty of Science, King Abdulaziz University, Jeddah, Saudi Arabia; and ⁴Department of Biochemistry, Institute for Protein Design, University of Washington, Seattle, Washington, USA

Edited by Paul Fraser

Antibodies against A β amyloid are indispensable research tools and potential therapeutics for Alzheimer's disease. They display several unusual properties, such as specificity for aggregated forms of the peptide, the ability to distinguish polymorphic aggregate structures, and the ability to recognize generic aggregation-related epitopes formed by unrelated amyloid sequences. Understanding the mechanisms underlying these unusual properties and the structures of their corresponding epitopes is crucial for the understanding why antibodies display different therapeutic activities and for the development of more effective therapeutic agents. Here we employed a novel “epitomic” approach to map the fine structure of the epitopes of 28 monoclonal antibodies against amyloid-beta using immunoselection of random sequences from a phage display library, deep sequencing, and pattern analysis to define the critical sequence elements recognized by the antibodies. Although most of the antibodies map to major linear epitopes in the amino terminal 1 to 14 residues of A β , the antibodies display differences in the target sequence residues that are critical for binding and in their individual preferences for nontarget residues, indicating that the antibodies bind to alternative conformations of the sequence by different mechanisms. Epitomic analysis also identifies discontinuous, nonoverlapping sequence A β segments that may constitute the conformational epitopes that underlie the aggregation specificity of antibodies. Aggregation-specific antibodies recognize sequences that display a significantly higher predicted propensity for forming amyloid than antibodies that recognize the monomer, indicating that the ability of random sequences to aggregate into amyloid is a critical element of their binding mechanism.

Amyloids are intermolecularly hydrogen-bonded β -sheet aggregates that have a regularly repeating lattice structure (1, 2). Unlike natively folded proteins that adopt a single or limited range of structures or states, amyloids can adopt a large

number of different β -sheet aggregate structures that vary in the parallel *versus* antiparallel strand arrangement, the segments of the sequence that form intermolecularly hydrogen-bonded β -sheets, and the locations where the sheets fold and how the sheets stack together. Many proteins are able to form amyloids upon unfolding or misfolding and are frequently associated with neurodegenerative diseases such as Alzheimer's disease (AD), Parkinson's disease, amyotrophic lateral sclerosis, and prion diseases (3). AD contains two canonical amyloids: A β amyloid, derived from APP and tau amyloid, and in approximately 30% of AD, cortical Lewy bodies are also present containing α -synuclein amyloid. Monoclonal antibodies against A β are a leading class of therapeutic for AD. Many of these antibodies have been evaluated in clinical trials, but so far none have demonstrated consistent therapeutic activity in slowing the progression of AD and none have been approved by the US Food and Drug Administration (reviewed in (4, 5)).

Conformation-dependent monoclonal antibodies against A β are also an invaluable tool for research in the role of amyloids in AD because they recognize epitopes that are differentially displayed on distinct structural polymorphs or folded states of the peptide, providing insight into the role of polymorphisms in the pathogenic spectrum of the disease (6). Many of the antibodies raised against A β amyloid specifically bind to aggregated oligomeric or fibrillar forms of the peptide and do not bind to the monomer or the amyloid precursor protein (7–10). Moreover, many of these aggregation state-specific antibodies recognize aggregates formed from unrelated sequences, indicating that amyloids display generic epitopes as a consequence of their aggregated structure. Understanding the mechanisms underlying the unusual specificities of anti-amyloid antibodies and the structures of their corresponding epitopes is crucial for the understanding of the immune response to amyloid and for the development of effective therapeutic agents.

We have previously reported polyclonal rabbit sera that distinguish two classes of amyloid aggregates. All sera were raised against oligomeric A β mimics made of A β 42 coupled *via* the carboxyl terminus to colloidal gold that recognizes

This article contains [supporting information](#).

* For correspondence: Charles Glabe, cglabe@uci.edu.



Epitomic analysis of anti-A β antibodies

prefibrillar oligomers, but not fibrils or monomer (7). Subsequently we reported OC serum that was raised against A β 42 fibrils that is specific for fibrils and fibrillar oligomers but not prefibrillar oligomers or monomer (8). A11 and OC serum recognize prefibrillar oligomers and fibrils, respectively, from several other amyloid-forming proteins, including α -synuclein and islet amyloid polypeptide, indicating that some of the antibodies in the sera recognize generic amyloid aggregates that do not depend on the precise peptide sequence. We also raised rabbit antiserum against A β 42 annular protofibrils, which are pore-like structures, but this serum labels the same type of prefibrillar oligomers as A11, indicating that these sera have related specificities (11). We cloned 6 monoclonals from A11 serum-producing rabbits (9), 2 monoclonals from annular protofibril vaccinated rabbits (Glabe, unpublished) and 23 monoclonals from OC serum-producing rabbits (10). For the OC monoclonals (mOC), the epitope was mapped using the “PepSpots” method of overlapping 10mers that vary by a single amino acid from position -5 to 45. Nineteen of the 23 mOC monoclonals gave a pattern of reactivity that mapped to either a linear or discontinuous epitope in the amino terminal two-thirds of the molecule (10) while 16 map to the amino terminal residues from 1 to 11 (10). Although these antibodies bind to the same regions of A β , they bind selectively to alternative fibril structures of A β , indicating that this region is conformationally polymorphic (12).

Here we report that the antibodies have very different epitopes and binding modes in terms of the 1) target residues that participate in binding, 2) target residues that are not important for binding, 3) nontarget residues that are preferred over target residues for binding, and 4) the presence and location of discontinuous conformational epitopes. The significance is that this information can be used for modeling the structures of the antibody-epitope interaction and the specific peptide scan be used in an array as a fingerprint to uniquely identify antibodies that bind to these epitopes and mimotopes in complex mixtures, like human serum to identify antibodies that may be protective or predictive of disease.

Results

Library randomness, bias, and nonspecific binding of phage

Library randomness and amino acid bias are important for distinguishing specific and nonspecific binding. In order to assess the randomness and amino acid bias in the library as purchased from the manufacturer, DNA from an aliquot of the library was extracted and the random sequences were amplified by PCR and deep sequenced, yielding 19,434 sequences of which 97.4% were unique sequences (Supplemental Information File 1, LibrarySeqOnly, column A, Original unamplified library). We also amplified the library two successive rounds and examined the effect on the number of unique sequences observed. (Supplemental Information File 1, LibrarySeqOnly, columns B, C, Amplified round 1 and round 2). In the first round of amplification, 93.4% of the sequences were unique, whereas in the second round of amplification 93.9% were unique. To further compare the randomness of the

library, we compared the unique sequences between the original library and the first amplification and found that 2.1% of the unique sequences were observed in both libraries. This is the same as the number of unique sequences that were observed twice in the same original unamplified library (2.1%). These results indicate that, although some sequences may have amplified preferentially, the vast majority of sequences in the library remain random after amplification.

The library has an inherent bias in terms of the frequency of nucleotides observed as shown in Table S1. Thymidine is overrepresented, whereas adenine is of the lowest abundance. We also calculated the frequency of amino acid residues observed in the random library as shown in Table S2. It is not surprising that leucine and serine, amino acids that have six codons, are abundantly encountered, although arginine, which also has six codons, is encountered with approximately half the frequency. Threonine with four codons is also abundant, whereas proline is surprisingly abundant with only two codons. Cysteine is the lowest-abundance amino acid observed. These results are very similar to the manufacturer's observed amino acid frequency published in their data sheet for the library. Stop codons are observed with a low frequency of 0.45%, presumably because stop codons halt the expression of the pIII protein that the random sequence is fused to that is required for infectivity. Although the host strain contains an amber suppressor tRNA to decode the UAG stop codon as glutamine, it is possible that other stop codons may arise from the cotransfection of a functional and nonfunctional pIII encoding genome into the same bacterium and packaged into phage. It is not clear why any stop codons are observed if pIII is absolutely required for infectious activity, but it is possible that this may arise from the initial transfection of the phagemid where a sequence containing a stop codon is cotransfected into the same bacterium and packaged into phage.

Nonspecific binding may have a significant deleterious effect on the analysis of the patterns observed that bind to the paratope of the antigen-combining site of the antibody because they do not fit any specific pattern and therefore lower the minimum percentage of the total sequences needed to match an epitope pattern (see C% below). We found that there are two types of nonspecific binding sequences. The first type are random sequences that bind specifically to the protein A magnetic beads and the constant regions of the antibodies. The patterns of key amino acid residues for antibody binding that arise from these sequences are found in all replicates of the control beads without any antibody and also found in all replicates containing antibody of the same isotype regardless of antibody's specificity. These sequences were identified and removed from the sequence files in the BASH processing script used to extract the peptide sequences from the Illumina data files. The second type of nonspecific binding sequences arise from the binding of phage to the beads or antibody through an interaction other than with the random sequence fused to pIII. These sequences display the same frequency distribution as the unselected random library in terms of the presence of a high percentage of unique sequences observed only once in the sequencing run.

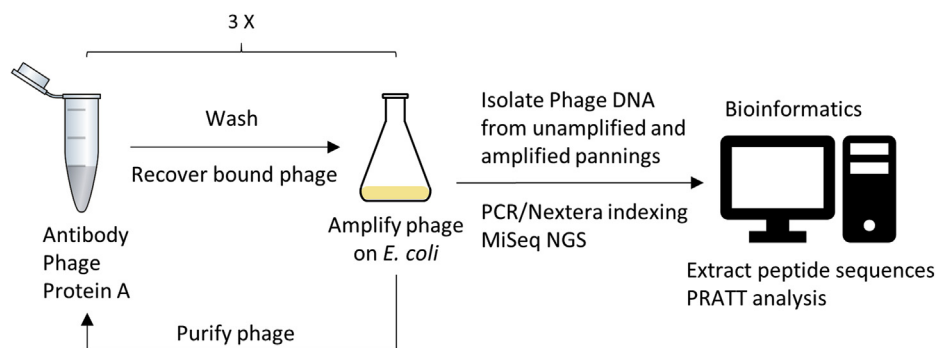


Figure 1. Schematic diagram for epitomic analysis of antibody specificity. Antibody is mixed with phage and Protein A beads. After washing, the phage is eluted from the beads and amplified in *E. coli*, purified, and used for antibody panning two more times. Samples of phage are taken after elution prior to amplification and after amplification. The isolated phage DNA is amplified and bar coded by PCR prior to MiSeq next-generation sequencing. The peptide sequences are extracted, and the unique sequences are counted and rendered in FASTA format for PRATT pattern analysis.

The purpose of repeating the immunoselection step is to increase the proportion of specific sequences, so we investigated the effect of immunoselection followed by amplification of the phage at each of the three steps. Using antibody mOC1 as an example, in the first immunoselection step prior to amplification 73.2% of the sequences occur a single time. At the second immunoselection prior to amplification, 98.7% are single. In the third immunoselection, 74.0% of the sequences are single reads, indicating that a substantial amount of nonspecific random sequences remains even after repeated immunoselection.

Epitomic analysis of monoclonal antibody specificity

We performed three immunoselection or panning steps for each antibody amplifying the eluted phage after each step and sequenced each round of panning before and after amplification as shown in Figure 1. We analyzed all six of these sequencing groups and found that the specific binding patterns were largely the same for each antibody, although the number of specific sequences increases with successive panning (data not shown). We chose to present the data for the unamplified samples after three rounds of panning because they have been subjected to three rounds of immunoselection and only two rounds of amplification (Supplemental Information File 2 Immunoselected sequences). A total of 6,282,154 sequence reads were obtained from the 28 monoclonals including the unamplified and amplified steps of the three panning. This includes 22 of the mOC series monoclonals and 6 of the mA11 monoclonals. Two of the mA11 monoclonals were not analyzed because the hybridomas producing them were lost (mA11-201 and mA11-121) and the two monoclonals raised against A β 42 annular protofibrils (mA11-09 and mA11-89) were included with the mA11 monoclonals because their properties overlap in terms of binding to β -barrel structures like annular protofibrils and hemolysins (13, 14). Once the sequences were processed by removing the nonspecific sequences and duplicates, we found a total of 1,713,634 unique peptide sequences. For each unique sequence found, we also counted the number of times it was observed. For the third unamplified step used in the analysis, the range was from 223 unique sequences for mOC51 to 53,621 for mOC98. The average number of unique sequences per monoclonal in the

third unamplified panning was 10,959. The unique sequences were sorted by the descending number of times their sequence was observed as a surrogate for relative binding activity.

The sequences were analyzed using the PRATT 2.1 amino acid sequence pattern recognition algorithm that is a method for the identification of patterns in a set of unaligned protein sequences (15). PRATT returns patterns expressed in Prosite notation that include the sequence pattern, the number of sequences that match the pattern (“hits”) and a “fitness” score, which is a nonstatistical parameter that reflects the nonrandomness or complexity of the pattern. PRATT has several variable parameters that significantly influence the patterns found. One of the most important parameters is C% (or CM), the minimum number of unique sequences to match in a pattern. If C% is set too high, no patterns are found or only low-fitness nonspecific patterns are found. If C% is set too low, then many patterns are observed that are subpatterns of a common parent pattern. As C% values decline, the length of the patterns and their fitness increases, depending on the specificity of the antibody. We illustrated the effect of C% values again using mOC1 (Table 1). As the value of C% drops, the number of sequences satisfying the pattern (“hits”) drops and the fitness increases. The flexibility number (FN) specifies the maximum length or flexibility of arbitrary sequence spacers or “wild card” regions that can be any amino acid. We chose an FN value of 0 so that only fixed-length patterns where X is one residue were evaluated. Although PRATT returns the same patterns with larger values of FN, the program takes longer to run and PRATT also finds more low-fitness patterns because of the increased flexibility. Pattern length (PL) is the maximum pattern length allowed and must be set long enough to accommodate the longest epitope encountered. If it is set too low, PRATT will find multiple lower-fitness subpatterns that are segments of a larger pattern. Longer values do not yield any more or different patterns, so we used a value of 12 because the maximum sequence length is 12. For most of the analysis we used C% = 10; FN = 0, and PL = 12. If using these parameters did not find any patterns with fitness values above those observed for the random sequence library alone (fitness > 12.50), then we adjusted the C% value down until higher-fitness patterns were obtained.

Epitomic analysis of anti-A β antibodies

Table 1
Effect of C% on patterns

	Fitness	Hits	Pattern
mOC1 C% = 75%			
1:	8.34	1148	E-x-R
2:	8.34	1192	A-E
mOC1 C% = 50%			
1:	12.5	895	A-E-x-R
2:	11.52	744	A-E-[FY]
3:	11.09	837	E-[FWY]-R
4:	10.93	726	D-[AGS]-E
mOC1 C% = 20%			
1:	16.68	351	A-E-F-R
2:	16.68	364	D-A-E-x-R
3:	15.77	321	D-A-E-[FL]
4:	15.68	295	S-[AS]-E-x-R
mOC1 C% = 10%			
1:	19.86	168	S-A-E-[FY]-R
2:	19.85	161	S-[AS]-E-F-R
3:	19.55	155	D-A-E-[FLM]-R
4:	19.27	146	D-[AGS]-E-F-R
Unselected random sequences C% = 1			
A 1:	12.51	178 (178)	P-P-S
B 2:	12.51	180 (179)	P-S-x-S
C 3:	12.51	194 (193)	P-S-x-P
D 4:	12.51	193 (193)	T-L-S
Unselected random sequences C% = 0.1			
A 1:	16.68	18 (18)	S-P-x(4)-S-P
B 2:	16.68	29 (29)	S-L-L-P
C 3:	16.68	20 (20)	S-x(3)-S-x-L-P
D 4:	16.68	18 (18)	S-S-x(3)-S-x-L

Nonspecific binding has a significant effect on C%, because the nonspecific sequences do not fit a specific pattern, lowering the threshold number of C% required to observe the specific patterns. The nonspecific sequences give the same low-fitness patterns of 3 to 4 residues of the most abundant amino acids (S, L, and P) that the unselected library does, with a fitness score of 12.5 for C% = 1 and 16.68 for C% = 0.1 (Table 1). We first analyzed the effect of nonspecific sequences by comparing the patterns found in the single copy sequences that contain the vast majority of nonspecific sequences with the patterns obtained from the top 100 most frequently encountered sequences that bind in a sequence-specific fashion. It is surprising that there is very little difference in the patterns found, although the exact pattern and fitness score can vary slightly comparable with that caused by changing the C% value. Because there was little difference for all of the antibodies between the highly observed sequences and the total sequences, we show the data obtained from the total sequences here (Table 2). Only the top three patterns with a fitness score above 12.5 are shown in Table 2. If more than one pattern had the same fitness score, the patterns with the highest number of hits are shown.

Half of the antibodies (mA11-09, mOC15, mOC29, mOC31, mOC41, mOC51, mA11-55, mA11-89, mOC98, mOC107, mOC108, mA11-118, mA11-204, and mA11-205) displayed no specific pattern at C% = 10, returning low-fitness value pairs and triplets of amino acids that are similar in composition and fitness to the patterns observed for the unselected random library sequences that consist of the most abundant amino acids, such as leucine, proline, threonine, and serine, indicating the patterns are dominated by nonspecific sequences (Table S2). All of these antibodies display specific patterns at lower values of C% as listed in Table 2. All of the mOC series

antibodies and five of the six A11 antibodies (mA11-09, 55, 118, 204, and 205) display patterns related to the A β sequence, whereas mA11-89 displays a pattern unrelated to A β . Individual peptides belonging to the mA11-89 patterns give multiple high-identity hits in the nonredundant protein data base (data not shown). It is not clear why this antibody binds to A β oligomers and oligomers from other amyloid sequences, although the sequence pattern observed may form a mimotope that is common to the β -barrel oligomers that mA11-89 binds to.

Although most of the antibodies bind to the amino terminal third of A β , each antibody displays differences in its binding preference in terms of the precise location on the target sequence, the identity of target amino acids required for binding, the location and composition of wild card positions where any amino acid or a subset of alternative residues are permitted, and locations where nontarget amino acids are preferred over target residues. Nontarget amino acids such as a S or P at sequence position 1 or 2 are preferred or tolerated in several antibodies (S or P: mOC16, 24, 31, 51, 87, and mA11-118). Many of the antibodies that map to a region of A β that contain an F or Y residue can accommodate either amino acid or sometimes W, whereas mOC116 only recognizes sequences containing the target F at position 20. Inspection of the actual sequences immunoselected by the antibodies indicate that mOC108 has a strong positional preference for sequences that begin at LVF or IVF, indicating that it prefers a free amino terminus. Sequences beginning at [IL]VF occur at approximately 93% of the total sequences recognized by mOC108.

Twenty-six of the monoclonals clearly recognize an A β -related epitope that is located in the amino terminal (1–14) or central (7, 15–28) third of the molecule or both (Fig. 2). Ten antibodies (mOC1, mA11-09, mOC15, mOC22, mOC23, mOC64, mOC98, mOC107, mA11-118, and mA11-204) all have epitopes centered on residues 1 to 5 DAEFR. Ten antibodies (mOC3, mOC16, mOC24, mOC29, mOC31, mOC41, mOC51, mOC87, mOC88, and mA11205) prefer residues 4 to 7 FRH, whereas mOC antibodies 78 and 86 bind to a site centered on residues 8 to 10 (SGY in A β). Four monoclonal antibodies bind to epitopes in the central third of A β . mOC108 binds to 17 to 19 (LVF), mOC9 and mA11-55 prefer the residues LVFFA (residues 17–21), and mOC 116 binds to residues 20 to 23 (FAED). One antibody, mOC76, gives a pattern, G-[IV]-[IV]-I-x-S, that is related to carboxyl terminal sequence residues 38 to 43 of A β 42, even though our previous epitope mapping study indicated that this antibody maps to residues 5 to 10, RHDSGY using the PepSpots overlapping 10mer epitope mapping method (10).

Our previous studies indicated that six of the antibodies (mOC1, 24, 31, 51, 78, and 98) recognize a discontinuous epitope because they react with more than one segment of the A β sequence using the overlapping peptide PepSpots method (16). The epitomic analysis of the antibodies also provides support for the recognition of discontinuous epitopes consisting of nonoverlapping sequence segments of A β . For example, antibody mOC98 binds to both residues 2 to 5 and residues 8 to 11 as the top two patterns observed (Table 2). In

Table 2
Major epitope patterns observed for 28 monoclonal antibodies

mOC1 Fitness hits sequence 16.68 1296 D-A-E-x-R 16.68 1278 A-E-F-R 16.68 855 D-A-E-F	mOC3 Fitness hits sequence 16.68 702 E-F-R-H 15.69 676 P-[EQ]-x-R-H 12.51 1505 E-x-R-H	mOC9 C% = 0.5 Fitness hits sequence 17.15 50 L-[ANSTV]-F-[FWY]-A 16.71 51 L-[ASTV]-[FW]-[FWY]-A 16.68 56 L-x-F-F-A	mA11-09 C% = 1 Fitness hits sequence 15.69 111 A-E-[FY]-R 15.13 93 D-A-A-[ADS] ^a 15.10 92 D-[AGS]-E-x-R
mOC15 C% = 1 Fitness hits sequence 15.75 50 A-E-F-[KR] 15.69 60 A-E-[FY]-R 15.69 50 A-[EQ]-F-R	mOC16 Fitness hits sequence 18.97 429 P-E-[FHwy]-R-H 16.68 598 E-F-R-H 15.26 428 P-E-[FWY]-x-H	mOC22 Fitness hits sequence 19.86 817 D-A-E-[FY]-R 18.54 752 D-[AGSTV]-E-F-R 16.68 113 A-E-F-R	mOC23 Fitness hits sequence 14.8 791 A-E-[FHwy]-R 12.51 898 A-E-x-R 12.51 792 A-x-F-R
mOC24 Fitness hits sequence 20.85 482 P-E-F-R-H 19.43 448 S-x-E-[FWY]-R-H 19.29 468 S-[APS]-E-x-R-H	mOC29 C% = 0.5 Fitness hits sequence 16.68 62 A-E-F-R 14.8 53 E-[FHwy]-R-H 12.51 91 A-E-x-R	mOC31 C% = 0.2 Fitness hits sequence 18.97 20 P-E-[FHwy]-R-H 16.68 26 E-F-R-H 16.68 22 P-E-x-R-H	mOC41 C% = 1 Fitness hits sequence 16.68 24 A-E-F-R 15.26 24 E-[FHwy]-R-H 15.09 25 D-A-[DER]-x-R
mOC51 C% = 2 Fitness hits sequence 20.85 7 A-E-F-R-H 20.85 7 P-E-F-R-H 20.85 5 S-P-E-x-R-H	mA11-55 C% = 2 Fitness hits sequence 18.56 54 L-x-F-F-A-[ADEST] 17.87 52 L-[ATV]-F-[FWY]-A 16.74 50 L-[GST]-[ADEGST]-R-S	mOC64 C% = 1 Fitness hits sequence 20.11 159 A-E-[FW]-x(2)-G-G 19.31 174 G-A-E-W-[NRS] 19.31 162 A-E-W-[NRS]-S	mOC76 Fitness hits sequence 1: 15.7 530 G-[IV]-V-I 2: 15.7 579 G-I-[IV]-I 3: 15.1 481 G-[ILV]-x-I-x-S
mOC78 Fitness hits sequence 16.68 1079 S-G-Y-E 15.11 965 S-G-F-[EQT] 14.38 1022 H-[AGLPV]-S-G	mOC86 Fitness hits sequence 14.71 1213 H-[ALPV]-S-G 12.51 1344 S-G-x-E 12.51 1210 S-G-Y	mOC87 Fitness hits sequence 16.68 780 E-F-R-H 15.69 740 P-[EQ]-x-R-H 13.81 683 P-[EQ]-[FHwy]-R	mOC88 C% = 5 Fitness hits sequence 15.11 345 D-x-R-H-[DST] 14.38 331 G-[DENST]-x-R-H 12.51 329 F-R-H
mA11-89 C% = 1 Fitness hits sequence 32,105 H-L-[AD]-C-A-[ADGV]-C-R 30,108 H-L-[AD]-C-A-x-C-R-[FLM] 30,104 L-D-C-A-[ADV]-C-R-[LMV]	mOC98 Fitness hits sequence 16.68 576 A-E-F-R 15.69 533 S-G-[FY]-E 15.68 538 D-[AS]-E-x-R	mOC107 C% = 1 Fitness hits sequence 15.72 182 A-E-F-[RS] 15.69 232 A-E-[FY]-R 15.68 186 D-[AS]-E-x-R	mOC108 C% = 1 Fitness hits sequence 16.68 168 I-V-F-P ^a 16.68 113 L-V-F-P ^a 15.73 119 V-F-P-[AP] ^a
mOC116 Fitness hits sequence 16.68 1253 F-A-E-D 12.51 2158 F-A-E 12.51 1387 F-x-E-D	mA11-118 C% = 0.1 Fitness hits sequence 15.94 517 S-A-E-[FW] 15.94 448 S-x-A-E-[FW] 15.94 410 A-E-[FW]-S	mA11-204 C% = 1 Fitness hits sequence 15.69 305 A-E-[FY]-R 13.93 266 A-[DEGNQST]-F-R 12.51 335 E-F-R	mA11-205 C% = 0.2 Fitness hits sequence 16.68 102 A-E-F-R 16.68 101 E-F-R-H 15.17 102 V-V-[ILV]-x-S

The three highest-fitness PRATT patterns are shown. Positions denoted by x can be any amino acid. Positions denoted by square brackets denote the preferred amino acids at wild card positions. C% = 10 was used unless a value for C% is shown.

^a Patterns where a strong position effect is observed with the pattern beginning at the first residue of the sequence.

Major Epitopes



DAEFRHDSGYEVHHQKLVFFAEDVGSNKGAIIGLMVGGVVIA

Minor Epitopes

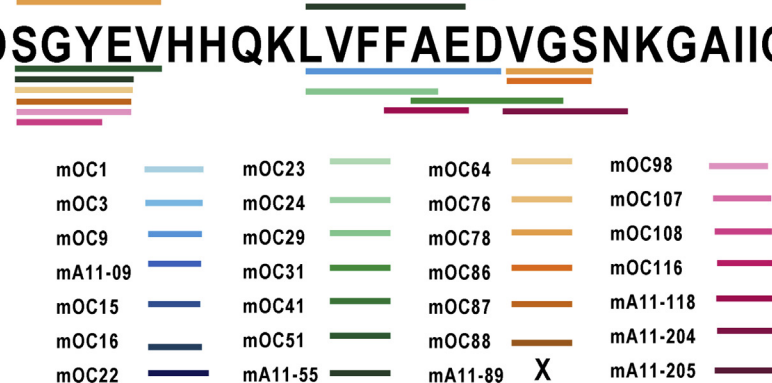


Figure 2. Map of antibody binding sites on Aβ42. The binding sites identified in Tables 2 and 3 are shown as color-coded bars. The major epitope is shown by bars above the Aβ sequence, and the minor epitope for antibodies that bind to more than one Aβ segment is shown by the bars below the Aβ sequence. No binding site is indicated for mA11-89 because it does not bind to a linear Aβ sequence by epitomic analysis.

consideration of the possibility that other Aβ segments of discontinuous epitopes may be lower-ranked patterns, we ran the PRATT analysis at lower values of C% (1%) and output all

of the patterns with a fitness score above 12.5. We then searched for patterns containing other segments of Aβ. This analysis identified 16 antibodies that recognize more than one

Epitomic analysis of anti-A β antibodies

Table 3
Antibodies that recognize more than one nonoverlapping segment of A β

mOC3 C% = 1 Rank fitness hits sequence 1 16.68 702 E-F-R-H 103 20.85 65 F-F-A-E-D 250 16.68 109 F-F-A-E	mOC9 C% = 1 Rank fitness hits sequence 8 26.23 5 L-[TV]-F-F-A-E-[DQRS] 85 20.85 10 D-A-E-F-R 86 20.85 6 D-A-E-Y-R	mOC29 C% = 1 Rank fitness hits sequence 1 19.43 37 D-A-E-[FWY]-R 5 15.69 46 L-x-F-[FY]-A 8 15.68 35 L-x-F-F-[AS]	mOC31 C% = 0.1 Rank fitness hits sequence 1 22.05 10 S-[APS]-E-[FWY]-R-H 331: 15.11 10 V-G-G-[ATV] 356: 15.10 11 A-x-D-[ALV]-G
mOC41 C% = 1 Rank fitness hits sequence 1 16.68 25 A-E-F-R 17 14.80 25 S-G-[FHXY]-E 27 14.15 25 S-G-[FY]-[AET]	mOC51 C% = 1 Rank fitness hits sequence 25 28.19 2 A-E-F-R-H-D-[SV] 46 20.85 3 E-F-R-H-D 50 20.85 3 S-G-Y-E-V	mA11-55 C% = 1 Rank fitness hits sequence 202 19.85 28 L-[TV]-F-F-A 290 15.10 23 H-x-S-G-[FHY] 310 12.51 23 S-G-x-E	mOC64 c% = 1 Rank fitness hits sequence 55 16.68 201 A-E-F-x-H 59 16.68 350 A-E-F-R 378 12.51 177 S-G-x-E
mOC76 c% = 1 Rank fitness hits sequence 7 24.07 48 G-[IV]-V-I-A-A-S 194 15.69 55 E-[FY]-R-H 303 12.51 77 E-x-R-H	mOC78 C% = 1 Rank fitness hits sequence 8 20.85 136 S-G-Y-E-V 150 16.68 1080 S-G-Y-E 437 12.51 102 V-G-S	mOC86 Rank fitness hits sequence 16 19.86 178 H-x-S-G-[FY]-E 21 19.86 146 S-G-Y-E-[LV] 402 10.93 129 V-G-[AGS]	mOC87 Rank fitness hits sequence 21 20.85 185 A-E-F-R-H 57 19.86 75 E-[FY]-R-H-D 357 12.51 71 S-G-x-E
mOC98 C% = 1 Rank fitness hits sequence 1 16.68 626 A-E-F-R 2 15.69 557 S-G-[FY]-E 4 15.10 550 H-x-S-G-[FHY]	mOC108 C% = 1 Rank fitness hits sequence 1 16.68 113 L-V-F-P 2 16.68 168 I-V-F-P 66 11.52 133 S-G-[FY]	mA11-118 C% = 1 Rank fitness hits sequence 20 15.94 229 A-E-[FW]-x(3)-S 114 12.51 182 L-x(3)-A-E 204 11.53 183 F-A-[ES]	mA11-204 c% = 0.3 Rank fitness hits sequence 1 19.86 100 D-A-E-[FY]-R 76 12.51 105 V-G-S 381 12.51 90 G-S-N

nonoverlapping segment of A β as shown in Table 3. Although the epitomic analysis confirms the discontinuous epitopes identified by the PepSpots assay for antibodies mOC3, 51, 78, and 98, it fails to confirm a second binding segment for mOC1 and 24. In addition, it identifies 12 additional antibodies with discontinuous epitopes that were not observed using the PepSpots membranes (mOC9, 29, 31, 41, 64, 76, 86, 87, 98, and mA11-55, 118, and 204). The resulting map of antibody-binding sites on A β including the major epitopes for 27 of the 28 antibodies and the minor epitopes for the antibodies that recognize more than one segment of A β is shown in Figure 2. Only two segments of the A β sequence are not recognized by any of the antibodies, residues 13 to 16 (HHQK) and residues 28 to 35 (KGAIIGLM).

In order to confirm the binding sites for the antibodies on the A β target sequence and attempt to resolve the conflicts between the epitomic approach and the PepSpots method, we repeated the peptide array using synthesized overlapping 10mers of the A β sequence from the -4 position to residue 45 and arraying the sequences on glass slides and probing the array with the antibodies. The data are shown in Figure 3, and a comparison of results of the three different methods is summarized in Table 4. The microarray data indicate that only 5 of the 16 antibodies identified by epitomic analysis as binding to discontinuous epitopes are confirmed by the two peptide array assays (mOC31, mOC51, mOC78, mOC98, and mA11-55). Even though all three approaches agree, the actual segments are different among the three different assays for some of the antibodies. For example, mOC51 binds to residues 3 to 7 and 19 to 25 according to PepSpots, residues 6 to 11 and 17 to 21 according to Epitomic analysis, and 13 to 21 and 28 to 37 by the microarray data. The two peptide arrays do not agree with each other for several of the antibodies. The epitomic analysis finds more discontinuous epitopes than the peptide array approach, and this may be because, in random sequence selection, both segments may be present simultaneously to create a stronger binding pair than the individual segments by themselves. The microarray results also confirm that mOC76 binds to the carboxyl-terminal sequences of A β , binding most strongly to the peptide ending at residue 45 (GVVIATVI) and

fails to confirm the data from the PepSpots assay that indicate binding at the amino terminus.

Most of the antibodies are specific for aggregated forms of A β and do not recognize monomer or the amyloid precursor protein, so it is not obvious from the epitope fine structures why the sequences displayed by the phage bind. It is possible that the monomeric sequence binds weakly in comparison with the aggregated form or that the random sequences fused to pIII aggregate on the phage. To investigate this issue further, we analyzed the specific sequences immunoselected for the propensity to form amyloid aggregates by three different algorithms, AGGRESCAN (17), Waltz (18), and the 3D profile method (19). The first two methods are sequence based, whereas the last method is structure based. The three methods give a general agreement on the amyloid-forming propensity, but the Waltz algorithm provides higher estimates and the 3D profile methods gives lower estimates of amyloid formation. We analyzed the top 100 sequences for each antibody and 100 unselected random sequences for amyloid-forming propensity and the results are shown in Table 5. Although there is considerable variation in the amyloid-forming propensity for some of the sequences, the antibodies that are specific for amyloid aggregates are associated with sequences that have a significantly higher propensity for forming amyloid than the antibodies that recognize monomer ($p < 0.002$). Because there are about 5 copies of the pIII protein all located on the head side of the filamentous phage, it is conceivable that they could form amyloid-like intermolecular aggregates on the surface of the phage. Some of the antibodies that recognize monomer have sequences with very low amyloid-forming propensity that is lower than the average amyloid-forming propensity for random 12mers from the unselected library and lower than that for the proteins, APP, tau, α -synuclein, and bovine serum albumin (BSA). This preference for low amyloid-forming propensity may be a reflection of the preference of these antibodies for unstructured regions of peptide.

We have previously reported that some of these antibodies bind to amyloid plaques and intraneuronal amyloid in human and transgenic mouse brain while others do not (10, 20).

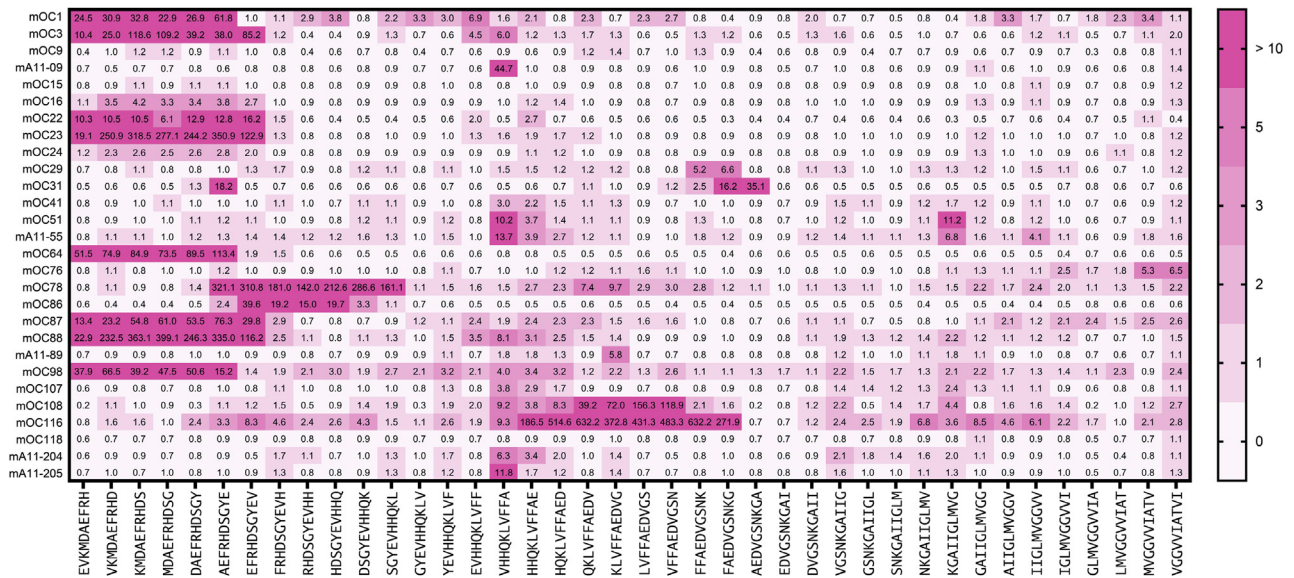


Figure 3. Microarray analysis of overlapping A β peptide 10mer sequences from -4 to 45 as indicated along the bottom of the figure. The spot intensity is indicated by pink to red boxes containing the fold increase above background of the binding.

Table 4
Summary of discontinuous epitopes

Antibody	PepSpots	Epitomics	Array
mOC1	+	-	+
mOC3	-	+	+
mOC9	-	-	-
mA11-09	-	+	-
mOC15	-	-	-
mOC16	-	-	-
mOC22	-	-	-
mOC23	-	-	-
mOC24	+	-	-
mOC29	-	+	-
mOC31	+	+	+
mOC41	+	+	+
mOC51	+	+	+
mA11-55	+	+	+
mOC64	-	+	-
mOC76	-	+	-
mOC78	+	+	-
mOC86	-	+	-
mOC87	-	+	-
mOC88	-	+	-
mA11-89	-	-	-
mOC98	+	+	+
mOC107	-	-	-
mOC108	-	+	-
mOC116	-	-	+
mA11-118	-	+	-
mA11-204	-	+	-
mA11-205	-	-	-

+ indicates a discontinuous epitope.

In addition, mOC31 specifically recognizes vascular amyloid (10, 21). We also found that two of the antibodies, mOC22 and mOC23, differentially recognize distinct regions of cored plaques (Fig. 4). mOC22 recognizes the entire cored plaque, whereas mOC23 preferentially binds to the rim of the plaque, indicating that, even though both antibodies bind to the same amino terminal region of A β , their distinct epitomic specificities are meaningful in their ability to identify inhomogeneities in plaque structure. Diffuse plaques stain uniformly with both antibodies indicating that different types of plaques display

different sets of epitopes (Fig. 4). The staining properties of antibodies mA11-09 and mA11-89 in human brain have not yet been reported. We found that mA11-09 stains intraneuronal amyloid that colocalizes with 6E10, whereas neither antibody stains plaques (Fig. 5), consistent with the reported properties of A11 serum (7), and provides further evidence for the utility of these antibodies in distinguishing novel types of amyloid in human brain.

Discussion

The immune response to amyloid A β is highly diverse, giving rise to many antibodies that bind to the same regions of the A β sequence and yet differentially react with specific aggregation states and structures *in vitro* and identify distinct types of amyloid deposited in human and transgenic mouse brain. We hypothesized that this diversity in immunoreactivity may reflect the structural diversity that the A β peptide can adopt upon aggregation into β -sheet amyloid and that differences in the way in which the antibody binds to the different structures would be reflected in the pattern of amino acids they prefer for binding. We found that the antibodies display distinct differences in terms of the location and identity of the target sequence residues that are critical for binding, the nonoverlapping segments that participate in binding, and in the preference for nontarget residues. The results show that all of the antibodies display distinct preferences for epitopes consisting of a mixture of target and nontarget residues and positions where a number of different amino acids are accommodated while other amino acids are rejected. This suggests that the regions of A β containing these epitopes are able to adopt a number of different structures such that the epitopes are displayed or not in a combinatorial fashion. This provides an explanation for why the antibodies bind to different A β fibril structures (12) and bind to different types of amyloids *in vitro* and *in vivo* (7, 10, 21, 24). Amyloids are

Epitomic analysis of anti-A β antibodies

Table 5
Aggregation propensity of immunoselected peptides

Name	Waltz % hits	AggScan % hits	3D % hits	Average
RandomSeq	32	28		
BSA	41.5	31.6		
APP771	35.8	26.5		
Synuclein	25.7	51.4		
mOC1	3	12	11	8.7
mOC3	29	13	5	15.7
mA11-09	52	36	15	34.3
mOC9	63	50	23	45.3
mOC15	42	36	15	31.0
mOC16	23	2	7	10.7
mOC22	33	20	11	21.3
mOC23	25	13	3	13.7
mOC24	16	5	3	8.0
mOC29	58	47	28	44.3
mOC31	38	29	19	28.7
mOC41	54	47	32	44.3
mOC51	51	32	9	30.7
mA11-55	46	34	23	34.3
mOC64	58	22	11	30.3
mOC76	69	80	58	69.0
mOC78	54	34	25	37.7
mOC86	51	44	29	41.3
mOC87	25	5	5	11.7
mOC88	20	9	4	11.0
mA11-89	66	72	42	60.0
mOC98	22	13	9	14.7
mOC107	44	40	17	33.7
mOC108	51	40	9	33.3
mOC116	65	43	9	39.0
mA11-118	36	33	16	28.3
mA11-204	46	36	16	32.7
mA11-205	51	43	20	38.0
4G8	53	79	21	51.0
6E10	23	7	4	11.3

BSA, bovine serum albumin.

intermolecularly hydrogen bonded cross- β structures that are structurally polymorphic (reviewed in (25, 26)), and the fact that A β displays a number of different structural polymorphisms is consistent with the fact that the immune response gives rise to a large number of different antibodies that have different binding modes for the different structures of the same peptide segments of A β . The fact that so many of the antibodies that bind to the amino terminal segment of A β are specific for aggregated A β and recognize different structural variants indicates that the commonly held view that

antibodies that bind to a linear segment of a peptide sequence are “nonconformational” is an oversimplification at least for anti-amyloid antibodies. A more accurate view may be whether it can adopt more than one structure. Mimotopes such as the ones identified here may give a more predictable immune response because it may adopt a single predominant structure and give rise to a more predictable immune response.

In addition, we found that the antibodies differ significantly in the nonoverlapping segments of the A β peptide that constitute the epitope that the antibody preferentially binds to. Most of these discontinuous segments are located in the amino terminal or central third of the sequence and suggest a combinatorial mechanism for the specificity of the antibodies that bind to discontinuous epitopes where different segments combine to form the epitope. A standard approach for epitope mapping is the PepSpots assay, where a series of overlapping peptides are synthesized and arrayed and used to determine the region of protein sequence to which an antibody binds. Although this is a reasonably inexpensive and facile method, it lacks fine details of the interactions and fails to identify many of the discontinuous conformational epitopes revealed by the epitomic approach, such as those that are found on amyloid aggregates. Phage display has also been used to identify epitopes, but the classical approach of sequencing positive individual clones limits the number of samples one can realistically process at once (22). Here we combine random sequence phage display and next-generation sequencing to identify the fine details of monoclonal antibody recognition of A β and its aggregates. Thousands of immunoselected sequences were analyzed using the PRATT 2.1 pattern recognition algorithm for patterns common to specifically bound phage that define the preferred epitope sequences recognized by the antibody. By coupling immunoselection of random sequences with deep sequencing, the results provide unprecedented insight into the nature of the epitope and its interaction with the antibody. The results not only identify the residues of the target sequence that constitute the binding site but also provide details about nontarget residues that are allowed, disallowed, or preferred for binding. Epitomic analysis also identifies nonoverlapping

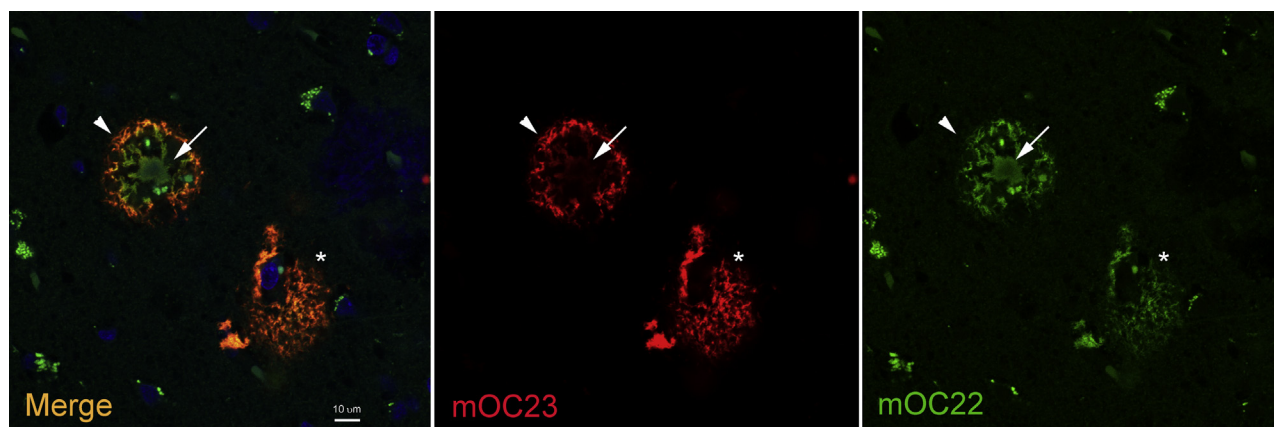


Figure 4. Differential staining of plaques in human AD brain by mOC22 (green) and mOC23 (red). mOC22 stains the entire cored plaque (arrow), whereas mOC23 stains only the rim (arrow head). A diffuse plaque is stained by both antibodies (asterisk). The cored plaque is approximately 50 μ m in diameter.

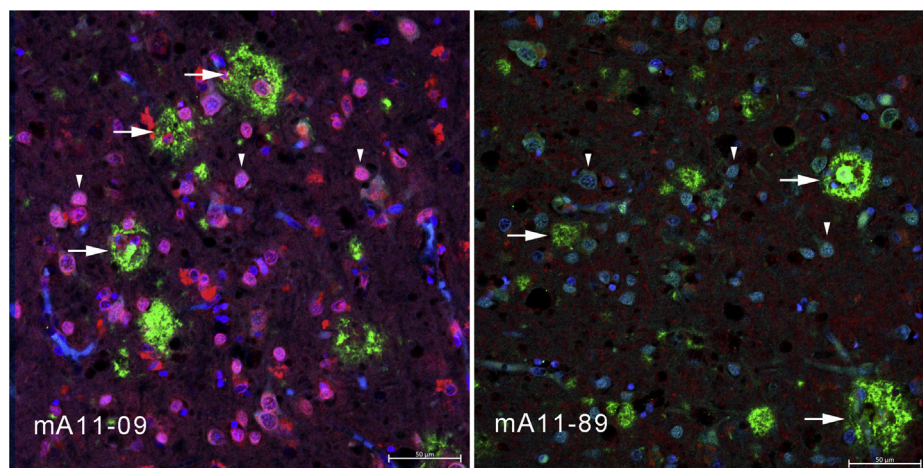


Figure 5. Monoclonal antibody mA11-09 stains intraneuronal amyloid, and both mA11 and mA11-89 fail to stain amyloid plaques. The intraneuronal mA11-09 immunoreactivity (*arrow heads*) largely overlaps with 6E10 A β immunoreactivity (*left panel*), which does not stain with mA11-89 (*right panel*). Neither antibody stains amyloid plaques that are stained by 6E10 (*arrows*). The scale bar represents 50 μ m.

segments that may constitute conformational epitopes for antibodies that fail to bind to these sequences using peptide array methods. This detailed structural information about the epitope may be valuable for modeling the atomic details of the antibody–epitope interaction.

Identifying conformational epitopes for monoclonal antibodies is an important and challenging topic for immunology, and epitomic analysis may be a rapid and facile means of investigating conformational specificity. The availability of multiple peptide sequences simultaneously for antibody binding may allow the identification of binding segments where each individual sequence binds too weakly to allow identification using single linear peptide segment approaches, like peptide arrays. In addition, some antibodies appear to bind one segment more tightly than the other so they may be misidentified as having a single linear epitope by peptide arrays when they actually recognize a discontinuous epitope. Reexamination of these antibodies using epitomic analysis may be warranted. These details may be very useful for understanding the binding mechanism and modeling the binding interaction in the absence of detailed structural information of the antibody–antigen complexes. This insight could also be very useful for predicting antibody cross-reactivity.

We hoped to also gain some insight into some of the peculiar properties of anti-amyloid antibodies, such as why many of them are specific for aggregates, why they recognize generic epitopes that do not depend on a specific amino acid sequence, and why the A11 and OC series antibodies recognize mutually exclusive aggregation-specific epitopes. A11 binds known repeating antiparallel β structures, such as antiparallel A β 42 prefibrillar oligomers (23), hemolysin pores (14), and β cylindrins (24). Antibodies in A11 serum also bind to α -sheet structures (25). OC binds to known parallel, in-register structures, such as A β (12), α -synuclein, and islet amyloid polypeptide fibrils (8). In antiparallel β sheets the strands alternate in opposite orientations, so it seems more likely that antibodies that are specific for antiparallel β sheets would bind to discontinuous epitopes. Indeed, half of the A11 antibodies

appear to bind to more than one A β segment and the combinatorial nature of the discontinuous segments provides an additional layer of specificity to the antibodies with these epitopes. However, approximately half of the mOC series monoclonals also display discontinuous epitopes, so this feature alone does not explain specificity of the A11 and OC antibodies. If the OC antibodies bind to parallel β sheets, then it would seem to indicate that these antibodies must bind to the ends of the beta sheet hair pin, which is the only part of the fibril structure where both segments would be exposed for antibody binding.

Monoclonal antibodies against A β are an important class of therapeutic agent under development for AD. Although many antibodies have been tested in the clinic, only two, aducanumab and BAN2401, have been reported to slow the progression of the disease, but they have yet to demonstrate consistent therapeutic activity and have not yet been approved for human use (26–28). It is not yet clear what distinguishes these antibodies from the ones that did not demonstrate clinical effectiveness, but they are claimed to specifically target aggregated forms of A β . We have previously reported that the majority of the antibodies examined here are specific for aggregation-related epitopes and do not bind the A β monomer or APP as determined by Western blotting and dot blots on preparations of synthetic A β oligomers, fibrils, and monomer (9, 10). Although these approaches are facile, they may not reproduce the structures that exist *in vivo* and they are complicated by the difficulty of preparing homogeneous populations of aggregates. Analysis of the immunoselected sequences by amyloid prediction algorithms provides an independent and unbiased means of assessing the specificity for aggregates. The data indicate that the sequences that bind to aggregation-specific antibodies have a significantly higher predicted propensity to aggregate than the random sequences as a whole or the sequences preferred by the antibodies that bind to A β monomer. This suggests that the random sequence displayed by the phage pIII protein may be aggregated, even though there are a relatively low number of copies of the pIII protein.

Epitomic analysis of anti-A β antibodies

It is interesting that many of the antibodies that bind monomeric A β show a lower-than-average propensity to aggregate. It is not yet clear whether this means that they are more likely to be unstructured, which facilitates the induced fit in the antigen-combining site, or whether they adopt a common nonaggregating structure.

The information obtained by epitomic analysis can also facilitate the investigation of which specific antibodies against A β occur in human serum and whether they are associated with avoiding or predictive of having AD. We found that the antibodies display a unique pattern of amino acid residues that is required for binding, positions where any amino acid or a restricted set of amino acids are permitted, and residues that are incompatible with binding. This pattern is unique to the antibody and is most likely determined by the structure of the complementary paratope. These unique patterns could be very useful to serve as a fingerprint to identify similar antibodies that recognize the same epitope in complex mixtures of antibodies, such as in human blood or cerebrospinal fluid. It may be possible to synthesize a set of peptide epitopes and mimotopes unique to the individual antibodies and screen human serum for immunoreactivity at these sequences. This would allow the identification of antibodies that are correlated with protection against AD or serve as biomarkers of AD. It could also enable the identification of disease subtypes and precision medicine approaches to AD immunotherapy that target the specific polymorphic structures that occur in human brain. With the large number of different antibodies with unique epitopes and specificities for polymorphic amyloid structures, there are many antibodies that remain to be examined in human clinical trials.

Experimental procedures

Antibodies

Twenty-eight rabbit monoclonal antibodies consisting of 5 antibodies derived from A11 serum and 23 derived from OC serum were produced and characterized as described (9, 10). Eight antibodies are commercially available from Abcam mOC22 (cat# ab205339), mOC23 (cat# ab205340), mOC31 (cat# ab201059), mOC64 (cat# ab201060), mOC78 (cat# ab205341), mOC87 (cat# ab201062), mOC98 (cat# ab201061), and mOC116 (cat# ab205342). All of the other antibodies are available under material transfer agreement upon request.

Phage display

Phage display was performed using New England Biolab's PhD-12 Phage Display Peptide Library Kit (Cat# E8110S) following manufacturer's instructions. Briefly, 1×10^{11} colony-forming units were incubated with 1 μ g of purified monoclonal antibody in a final volume of 200 μ l of TBS-T (TBS with 0.5% Tween-20) for 20 min at room temperature (RT). After the incubation period, the sample was resuspended in 50 μ l of Protein A-coated magnetic beads (Novex DYNAL Dynabeads Protein A, cat# 10002D). Following a 20-min incubation, the unbound phage was removed, and the beads were washed with 1 ml of TBS-T. The beads were then resuspended in 200 μ l of

TBS-T, placed in a 96-well plate, and washed in TBS-T using a ThermoFisher Kingfisher magnetic particle processor. Bound phage was eluted in 200 μ l glycine buffer pH 2.2 and immediately neutralized by adding 20 μ l of 1 M Tris pH 9. A total of 100 μ l was saved to isolate phage DNA (unamplified panning) and the rest used to infect 1.5 ml of LB broth with *Escherichia coli* and amplified at 37 °C. After 4.5 h, the bacterial broth was centrifuged for 10 min at 18,000g in a microcentrifuge, the supernatant recovered, and the phage precipitated overnight at 4 °C by adding 250 μ l of 20% PEG 8000/2.5 M NaCl. The following day, the samples were centrifuged 10 min at 18,000g at 4 °C and the phage pellet was resuspended in 100 μ l of TBS. This was the amplified panning, and 10 μ l was used for antibody selection in the next panning.

Phage DNA isolation and library preparation

Phage DNA was isolated using a standard phenol:chloroform method (29). Quality was assessed by visualization in a 1% agarose gel, and its concentration measured by spectrophotometry. A total of 100 ng of phage DNA was used as template for PCR amplification for the next-generation sequencing step. The phage DNA amplicons were barcoded and pooled, and a 10 nM library was sequenced commercially on an Illumina MiSeq platform (Laragen Inc, Culver City, CA, USA).

Data analysis

The Illumina sequencing data were processed by a BASH script (Supplemental Information) that extracts the DNA sequence coding for the dodecapeptides, translates them to protein, counts how many times each unique sequence was found in the sequencing file (frequency), and removes common background sequences due to unspecific binding to the Protein A beads. The peptide sequences were sorted by frequency and converted to the FASTA format as described (30). The FASTA sequences were written with an identifier label that contains the antibody name, the unique sequence number, and the number of times the sequence was observed in the following pattern: >(antibody)*(sequence #)_(frequency) to facilitate machine counting of the frequency. The sequences were analyzed to determine the amino acid sequence patterns they contain using PRATT 2.1 (15) that was edited and recompiled to accommodate up to 200,000 sequences as described (30).

Microarray analysis

For microarray fabrication, biotinylated amyloid peptides spanning the amyloid beta sequence (-5 to 45) were pre-incubated with NeutrAvidin (ThermoFisher Scientific, MA, USA) in phosphate-buffered saline (PBS) at a molar ratio of 4:1 for 1 h at RT with gentle agitation. The final concentration of peptides in the complex was 0.5 mg/ml. Tween 20 (T-PBS) and glycerol were added to the peptide complex solution at a final concentration of 0.001%, and then the solution was spotted onto nitrocellulose-coated glass AVID slides (Grace Bio-Labs, Inc, OR, USA) using an Omni Grid 100 contact microarray

printer (Genomic Solutions). One nanoliter of peptide solution was delivered onto the membrane, corresponding to approximately 0.5 ng of peptide per spot. Slides were stored in a desiccator until use. Monoclonal antibodies were diluted in protein array blocking buffer (GVS, Sanford, ME, USA) to a final concentration of 5 ng/ml. Concurrently, arrays were rehydrated in blocking buffer for 30 min. The blocking buffer was removed, and the arrays were probed with samples using sealed chambers to avoid cross-contamination between the pads. The arrays were incubated overnight at 4 °C with gentle agitation. The arrays were washed three times with washing buffer, TBS-T, and bound antibodies were detected by Cy5-conjugated goat anti-rabbit IgG (Jackson ImmunoResearch Laboratories, Inc, West Grove, PA, USA), diluted 1:200 in blocking buffer. After 1 h at RT incubation, arrays were washed three times with TBS-T and once with water. They were air dried by centrifugation at 500g for 10 min. Images were acquired using the Perkin Elmer ScanArray Express HT confocal laser scanner at a wavelength of 670 nm, and signal intensities were quantified using ProScanArray Express software (Perkin Elmer, Waltham, MA, USA). All signal intensities were corrected for spot-specific background.

Fluorescence microscopy

Human brains obtained from UCI Alzheimer's Disease Research Center Tissue Repository were sliced into 50- μ m-thick slices using a Vibratome Leica 1000 and stored in 1 \times PBS with 0.02% NaN₃ (v/v). Antibody mOC22 was biotinylated with NHS-biotin (ThermoFisher EZ-Link Catalog # 20217) according to the manufacturer's instructions. For antibodies mOC22 and mOC23, the sections were incubated overnight at RT at a concentration of 0.1 μ g/ml in TBS containing 1% BSA and then washed three times in TBS. The sections were incubated with goat anti-rabbit IgG labeled with Alexa Fluor 647 (A32728, ThermoFisher Scientific), 1 μ g/ml in TBS with 1% goat serum for 1 h. Sections were washed three times in TBS for 5 min and incubated in TBS containing 1% rabbit serum for 30 min. The sections were then incubated overnight in 0.1 μ g/ml biotinylated mOC22 and then washed three times in TBS, incubated in TBS-1% BSA, and incubated with 1 μ g/ml Alexa Fluor 488 streptavidin ThermoFisher S21374) for 1 h, then washed three times with TBS and mounted on a slide and imaged with a Zeiss LSM 700 laser confocal microscope. For antibodies mA11-09 and mA11-89, sections were subjected to antigen retrieval with 1 M citric acid (pH 6.0), heated by microwave for 2 min, followed by 4-min incubation with 80% formic acid. Sections were washed three times with PHEM buffer (60 mM Pipes, 25 mM Hepes, 10 mM EGTA, 4 mM MgSO₄), followed by permeabilization with PHEM with 0.2% TritonX-100 (v/v) for 20 min, shaking at RT. Afterward, sections were blocked in PHEM with 2% BSA and 1.2% normal goat serum for 1 h at RT, shaking. Amyloid was stained overnight at RT, shaking with (1:100) hybridoma supernatant from monoclonal antibodies in the blocking solution. The omission of the primary antibodies was taken along as negative controls. Furthermore, brain sections were subjected to a

series of washes with PHEM buffer and incubated with the secondary antibody Alexa Fluor 647 (A21245, ThermoFisher Scientific) (1:300) in PHEM buffer with 2% BSA for 3 h at RT, shaking in the dark. Next, the sections were washed with PHEM buffer and stained with 5 μ g/ml 4',6-diamidino-2-phenylindole solution for 10 min at RT. Stained brain sections were then mounted using ProLong Diamond Antifade mounting medium (P36970, ThermoFisher Scientific) and scanned with a Zeiss LSM 700 laser confocal microscope.

Data availability

All data files can be accessed at Dryad, Dataset, <https://doi.org/10.7280/D1QH5W>

Acknowledgments—The authors wish to thank Dr Jeffrey Glabe for help with modifying and recompiling PRATT and Matt Gargus, Noe Neira Garza, and Dania Alvarez for helping to write the BASH script to extract the peptide sequences from the sequencing files.

Author contributions—J. M. R.-R. and C. G. G. conceptualization; J. M. R.-R. and C. G. G. formal analysis; J. M. R.-R. investigation; J. M. R.-R., R. N., I. B., T. K., and P. L. F. methodology; J. M. R.-R. and C. G. G. writing-original draft; J. M. R.-R. and C. G. G. writing-review and editing; L. G., J. S., P. N. M. H., and C. G. G. data curation; C. G. G. supervision; C. G. G. funding acquisition; C. G. G. project administration.

Funding and additional information—This work was supported by NIH grants AG056507 and AG061857 (C. G.), and the Cure Alzheimer Fund (C. G.). The content is solely the responsibility of the authors and does not necessarily represent the official views of the National Institutes of Health.

Conflict of interest—The authors declare that they have no conflicts of interest with the contents of this article.

Abbreviations—The abbreviations used are: AD, Alzheimer's disease; BSA, bovine serum albumin; FN, flexibility number; mOC, monoclonals; TBS, Tris-buffered saline; TBS-T, TBS with 0.5% Tween-20.

References

- Eisenberg, D. S., and Sawaya, M. R. (2017) Structural studies of amyloid proteins at the molecular level. *Annu. Rev. Biochem.* **86**, 69–95
- Glabe, C. G. (2008) Structural classification of toxic amyloid oligomers. *J. Biol. Chem.* **283**, 29639–29643
- Dobson, C. M. (1999) Protein misfolding, evolution and disease. *Trends Biochem. Sci.* **24**, 329–332
- Panza, F., Lozupone, M., Logroscino, G., and Imbimbo, B. P. (2019) A critical appraisal of amyloid-beta-targeting therapies for Alzheimer disease. *Nat. Rev. Neurol.* **15**, 73–88
- Bullain, S., and Doody, R. (2020) What works and what does not work in Alzheimer's disease? From interventions on risk factors to anti-amyloid trials. *J. Neurochem.* <https://doi.org/10.1111/jnc.15023>
- Glabe, C. G. (2004) Conformation-dependent antibodies target diseases of protein misfolding. *Trends Biochem. Sci.* **29**, 542–547
- Kayed, R., Head, E., Thompson, J. L., McIntire, T. M., Milton, S. C., Cotman, C. W., and Glabe, C. G. (2003) Common structure of soluble amyloid oligomers implies common mechanism of pathogenesis. *Science* **300**, 486–489

Epitomic analysis of anti-A β antibodies

- Kayed, R., Head, E., Sarsoza, F., Saing, T., Cotman, C. W., Neuclea, M., Margol, L., Wu, J., Breydo, L., Thompson, J. L., Rasool, S., Gurlo, T., Butler, P., and Glabe, C. G. (2007) Fibril specific, conformation dependent antibodies recognize a generic epitope common to amyloid fibrils and fibrillar oligomers that is absent in prefibrillar oligomers. *Mol. Neurodegener* **2**, 18
- Kayed, R., Canto, I., Breydo, L., Rasool, S., Lukacsovich, T., Wu, J., Albay, R., 3rd, Pensalfini, A., Yeung, S., Head, E., Marsh, J. L., and Glabe, C. (2010) Conformation dependent monoclonal antibodies distinguish different replicating strains or conformers of prefibrillar Abeta oligomers. *Mol. Neurodegener* **5**, 57
- Hatami, A., Albay, R., 3rd, Monjazebe, S., Milton, S., and Glabe, C. (2014) Monoclonal antibodies against Abeta42 fibrils distinguish multiple aggregation state polymorphisms *in vitro* and in Alzheimer disease brain. *J. Biol. Chem.* **289**, 32131–32143
- Lasagna-Reeves, C. A., Glabe, C. G., and Kayed, R. (2011) Amyloid-beta annular protofibrils evade fibrillar fate in Alzheimer disease brain. *J. Biol. Chem.* **286**, 22122–22130
- Walti, M. A., Ravotti, F., Arai, H., Glabe, C. G., Wall, J. S., Bockmann, A., Guntert, P., Meier, B. H., and Riek, R. (2016) Atomic-resolution structure of a disease-relevant Abeta(1-42) amyloid fibril. *Proc. Natl. Acad. Sci. U. S. A.* **113**, E4976–E4984
- Kayed, R., Pensalfini, A., Margol, L., Sokolov, Y., Sarsoza, F., Head, E., Hall, J., and Glabe, C. (2009) Annular protofibrils are a structurally and functionally distinct type of amyloid oligomer. *J. Biol. Chem.* **284**, 4230–4237
- Yoshiike, Y., Kayed, R., Milton, S. C., Takashima, A., and Glabe, C. G. (2007) Pore-forming proteins share structural and functional homology with amyloid oligomers. *Neuromolecular Med.* **9**, 270–275
- Jonassen, I., Collins, J. F., and Higgins, D. G. (1995) Finding flexible patterns in unaligned protein sequences. *Protein Sci* **4**, 1587–1595
- Reineke, U., and Sabat, R. (2009) Antibody epitope mapping using SPOT peptide arrays. *Methods Mol. Biol.* **524**, 145–167
- Conchillo-Sole, O., de Groot, N. S., Aviles, F. X., Vendrell, J., Daura, X., and Ventura, S. (2007) AGGRESCAN: a server for the prediction and evaluation of “hot spots” of aggregation in polypeptides. *BMC Bioinformatics* **8**, 65
- Maurer-Stroh, S., Debulpaep, M., Kuemmerer, N., Lopez de la Paz, M., Martins, I. C., Reumers, J., Morris, K. L., Copland, A., Serpell, L., Serrano, L., Schymkowitz, J. W., and Rousseau, F. (2010) Exploring the sequence determinants of amyloid structure using position-specific scoring matrices. *Nat. Methods* **7**, 237–242
- Goldschmidt, L., Teng, P. K., Riek, R., and Eisenberg, D. (2010) Identifying the amyloids, proteins capable of forming amyloid-like fibrils. *Proc. Natl. Acad. Sci. U. S. A.* **107**, 3487–3492
- Pensalfini, A., Albay, R., 3rd, Rasool, S., Wu, J. W., Hatami, A., Arai, H., Margol, L., Milton, S., Poon, W. W., Corrada, M. M., Kawas, C. H., and Glabe, C. G. (2014) Intracellular amyloid and the neuronal origin of Alzheimer neuritic plaques. *Neurobiol. Dis.* **71C**, 53–61
- McLean, D., Cooke, M. J., Albay, R., 3rd, Glabe, C., and Shoichet, M. S. (2013) Positron emission tomography imaging of fibrillar parenchymal and vascular amyloid-beta in TgCRND8 mice. *ACS Chem. Neurosci.* **4**, 613–623
- Abbott, W. M., Damschroder, M. M., and Lowe, D. C. (2014) Current approaches to fine mapping of antigen-antibody interactions. *Immunology* **142**, 526–535
- Cerf, E., Sarroukh, R., Tamamizu-Kato, S., Breydo, L., Derclaye, S., Dufrene, Y. F., Narayanaswami, V., Goormaghtigh, E., Ruyschaert, J. M., and Raussens, V. (2009) Antiparallel beta-sheet: a signature structure of the oligomeric amyloid beta-peptide. *Biochem. J.* **421**, 415–423
- Laganowsky, A., Liu, C., Sawaya, M. R., Whitelegge, J. P., Park, J., Zhao, M., Pensalfini, A., Soriaga, A. B., Landau, M., Teng, P. K., Cascio, D., Glabe, C., and Eisenberg, D. (2012) Atomic view of a toxic amyloid small oligomer. *Science* **335**, 1228–1231
- Shea, D., Hsu, C. C., Bi, T. M., Paranjapye, N., Childers, M. C., Cochran, J., Tomberlin, C. P., Wang, L., Paris, D., Zonderman, J., Varani, G., Link, C. D., Mullan, M., and Daggett, V. (2019) Alpha-sheet secondary structure in amyloid beta-peptide drives aggregation and toxicity in Alzheimer’s disease. *Proc. Natl. Acad. Sci. U. S. A.* **116**, 8895–8900
- Arnold, C. (2020) Post-hoc analysis could give new life to the Alzheimer’s drug aducanumab. *Nat. Med.* <https://doi.org/10.1038/d41591-020-00031-z>
- Knopman, D. S., Jones, D. T., and Greicius, M. D. (2020) Failure to demonstrate efficacy of aducanumab: an analysis of the EMERGE and ENGAGE trials as reported by Biogen, December 2019. *Alzheimers Dement.* <https://doi.org/10.1002/alz.12213>
- Tolar, M., Abushakra, S., Hey, J. A., Porsteinsson, A., and Sabbagh, M. (2020) Aducanumab, gantenerumab, BAN2401, and ALZ-801—the first wave of amyloid-targeting drugs for Alzheimer’s disease with potential for near term approval. *Alzheimers Res. Ther.* **12**, 95
- Sambrook, J., and Russell, D. W. (2006) Purification of nucleic acids by extraction with phenol:chloroform. *CSH Protoc* **2006**, pdb.prot4455
- Baghallab, I., Reyes-Ruiz, J. M., Abulnaja, K., Huwait, E., and Glabe, C. (2018) Epitomic characterization of the specificity of the anti-amyloid abeta monoclonal antibodies 6E10 and 4G8. *J. Alzheimers Dis.* **66**, 1235–1244