

UCLA
Contemporary Music Score Collection

Title

Concerto for Orchestra

Permalink

<https://escholarship.org/uc/item/8h22d30n>

Author

OH, Jongsung

Publication Date

2020

Concerto

for Orchestra


Full Score

Instrumentation

- 3 Flutes (1st&2nd doubling Piccolo, 3rd doubling Alto Flute)
- 3 Oboes (3rd doubling English Horn)
- 3 Clarinets (2nd doubling Clarinet in E \flat , 3rd doubling Bass Clarinet in B \flat)
- 3 Bassoons (3rd doubling Contrabassoon)

- 4 Horn in F (straight mute)
- 3 Trumpet in C (straight mute, harmon mute)
- 3 Trombone (1st&2nd=Tenor Trombone, 3rd=Bass Trombone, straight mute, wha-wha mute)
- Tuba (straight mute)

4 Percussion Players

- Player 1: Vibraphone, Mark Tree, Claves, Marimba, Maracas(huge), Tubular Bells, Glockenspiel, 3 Triangles(large, medium, small), 2 Bongos(large, small)
- Player 2: Xylophone, Metal Block, Maracas(medium), Crotales, Wind Chimes(metal), 4 Temple Blocks, Sizzle Cymbal(medium), 2 Wood Blocks(very high pitches), Pitched gong()
- Player 3: Glockenspiel, Sizzle Cymbal(small), Tambourine, Vibraslap, Bass Drum, Vibraphone, Triangle(small), 3 Snares (large, medium, small), 1 Bongo(small), 3 Suspended Cymbals(large, small, medium)
- Player 4: Bass Drum, Timpani, Pair of Cymbals, Tambourine, Guiro(large or medium), 2 Tam-tam(very large, large), 3 Triangles(large, medium, small), Maracas(small), Egg Shaker

Piano(doubling Celesta)

Harp

Strings (16-14-12-10-8)

★NB: Contrabass with 5 strings are required, with bottom string tuned in C

Piccolo and Xylophone sound one octave higher than notated.

Glockenspiel and Crotales sound two octaves higher than notated.

Contrabass and Contrabassoon sound one octave lower than notated.

The score is notated in C

Duration: about 15'30"

Instructions

Woodwinds

Alto Flute Multiphonics Chart

2 *mf-ff*

Nr. • No.: 116

Bass Clarinet Multiphonics Chart

90

2 2 *p* → *mf*

Normal fingering, only embouchure. Combination with MFs 9 and 11

Bassoon Multiphonics Chart

no.1 no.2 no.3

M8 6 3

Strings

s.p. sul ponticello
 m.s.p. molto sul ponticello
 s.t. sul tasto

15

2 3

Fl. 1 2

A.Fl.

Ob. 1 2

E.Hrn.

Cl. 1 2 3

Bsn. 2 3

Hrn. 1 2 3 4

Trp. 1 2 3

Perc. 1 2 3 4

Pno.

Hp.

Vln. I

Vln. II

Vla.

Vc.

C.B.

con sord.

Siz. Cymb. with brush

pacca a pacca

ord.

arco

EP sempre

*The glissando does not begin immediately, but somewhat later, after the middle of the note value.

4/4 3/4

Fl. 1 & 2
A.Fl.
ob. 1 & 2
E.Hrn.
Cla. 1 & 2
Bsn. 1, 2, 3

Fl. 1 muta in Proc.
1 solo
mp

Hrn. 1, 2, 3, 4
Trp. 1, 2
Tbn. 1, 2

senza sord. al
al

Perc. 1, 2, 3, 4

Metal Chimes
Tambourine
Timpani with soft mallet

take soft mallet

Pno.
Hp.

div. ind

Vln. I & II
Vla.
Vc.
C.B.

mf, f, p, div. ind, gliss.

2
4 3
4 rit.

30

Picc. *mf*

Fl. 2 *pp*

A.Fl. *mf*

Ob. 1 *mf*

Ob. 2 *mf*

E.Hrn. *mf*

Cla. 1 *mp* *cresc.* *molto*

Cla. 2 *mp* *cresc.* *molto*

Bsn. 1 *mf*

Bsn. 2 *f*

Bsn. 3 *mp*

A.Fl. muta in Fl.

Cla. 2 muta in E^b Cla.

Cla. 3 muta in Bass Cla.

Bsn. 3 muta in Cbn.

Hrn. 1 *cresc. poco a poco* *molto*

Hrn. 2 *cresc. poco a poco* *molto*

Hrn. 3 *cresc. poco a poco* *molto*

Hrn. 4 *cresc. poco a poco* *molto*

Trp. 1 *cresc. poco a poco* *molto*

Trp. 2 *cresc. poco a poco* *molto*

Trp. 3 *cresc. poco a poco* *molto*

Tbn. 1 *cresc. poco a poco* *molto*

Tbn. 2 *cresc. poco a poco* *molto*

Tuba *mf* *cresc. poco a poco* *molto*

take horn mutes

Perc. 1 *mf* *Glockenspiel with metal mallet*

Perc. 2 *pp* *cresc.* *molto* *Ratchet*

Perc. 3 *mf*

Perc. 4 *mf*

Vibrislap

Pno. *mf*

Hp. *pp* *cresc.* *poco a poco* *molto*

Vln. I *mf* *sul pont.* *gliss.*

Vln. II *mf* *sul pont.* *gliss.*

Vla. *mf* *7-12 sul pont.* *div. in 2*

Vc. *mf* *sul pont.* *gliss.*

C.B. *mf* *sul tasto*

4+1
8 16

3+1
8 16

40

45

Picc.

Fl. 2/3

Ob. 1/2

E.Hm.

Cla. in Eb

Cla. in Bb

Bas. Cla. in Bb

Bsn. 1/2

Cbsn.

Hrn. 1/2/3/4

Trp. 1/3

Tbn. 1/3

Tuba

Perc. 1/2/3/4

Pno.

Hp.

4+1
8 16

3+1
8 16

♩ = ca. 80

Vln. I

Vln. II

Vla.

Vc.

C.B.

arco. sul pont.

arco ord.

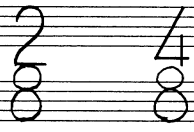
arco ord. dir.

arco ord.

arco ord.

arco ord.

dir. in L



55

60

Picc. Fl. 2 A. Fl. Ob. 1, 2 E. Horn. Cla. in Eb Cla. 1 in Bb 3 Bsn. 1, 2 Cbsn.

Handwritten musical notation for woodwind and brass instruments. Includes Piccolo, Flute 2, Alto Flute, Oboe 1 & 2, English Horn, Clarinet in Eb, Clarinet 1 in Bb (3), Bassoon 1 & 2, and Contrabassoon. Dynamics include *pp*, *p*, *cresc.*, and *mf*.

Hrn. 1, 3 Trp. 1, 2 Tbn. 1, 2 Tuba

Handwritten musical notation for Horns, Trumpets, and Tubas. Includes Horns 1 & 3, Trumpets 1 & 2, Trombones 1 & 2, and Tuba. Dynamics include *pp*, *p*, *mf*, *f*, and *sfz*. Performance instructions include *senza sord.* and *al. sempre*.

Perc. 1, 2, 3, 4

Handwritten musical notation for Percussion. Includes Maracas, Chuge, Metal Blocks, Sch. Cymb., Triangle (small), and Vib. mallet. Dynamics include *mp*, *mf*, *f*, *sfz*, and *pp*.

Pno.

Handwritten musical notation for Piano. Dynamics include *mp*, *p*, *mf*, *f*, *sfz*, and *pp*. Includes performance instructions like *tr. (b)* and *15ma*.

Vln. I, Vln. II Vla. Vc. C.B.

Handwritten musical notation for Strings. Includes Violin I, Violin II, Viola, Violoncello, and Contrabass. Dynamics include *dim.*, *cresc.*, *mf*, *f*, *sfz*, and *pp*. Includes performance instructions like *harm. gliss.* and *15ma*.

allarg. $\frac{3}{4}$ Allegro energico = ca. 120

Picc. *cresc. molto*

Fl. 2 *mf* *cresc.* *cresc. molto*

A.Fl. *(cresc.)* *molto*

Ob. 2 *(cresc.)* *molto*

E.Hrn. *(cresc.)* *molto*

Cl. in Eb *f* *cresc.* *molto*

Cl. in Bb 1 *(cresc.)* *molto*

Bsn. 2 *(cresc.)* *molto*

Cbsn. *(cresc.)* *molto*

Hrn. 1 2 3 4 *molto*

Trp. 1 2 3 *molto*

Tbn. 1 2 3 *molto*

Tuba *molto*

Tubular Bells

Perc. 1 2 3 4 *cresc.* *Vib.* *Pair of Cymbals in hand*

Pno. *molto*

Hp. *chah*

$\frac{3}{4}$ Allegro energico = ca. 120

Vln. I *cresc.* *ms.p.* *non div. ord.*

Vln. II *cresc.* *ms.p.* *non div. ord.*

Vla. *cresc.* *ms.p.* *non div. ord.*

Vc. *cresc.* *ms.p.* *non div. ord.*

C.B. *cresc.* *ms.p.* *non div. ord.*

70

Picc. 2

Fl. 2

A. Fl. 2

Ob. 2

E. Hrn. 2

Cla. in Eb 2

Cla. in Bb 1 3

Bsn. 1 2

Cbsn. 2

Hrn. 1 3

2 4

Trp. 1 2/3

2 3

Tbn. 1 2/3

2 3

Tuba 2

Perc. 1

2

3

4

take wire brushes

Bass Drum with mallet

Pno. 2

Hp. 2

CH/Ab

cresc. poco a poco

Vln. I 2

Vln. II 2

Vla. 2

Vc. 2

C.B. 2

m.s.p.

mf

f

3/4 subito *Tranquillo*
♩ = ca. 100

2/4 rit. *molto*
♩ = 80

Picc. *mf*

Fl. 2 *mf*

A.Fl. *mf*

Ob. 2 *mf*

E.Hrn. *mf*

Cl. in E^b *mf*

Cl. in B^b 1/3 *mf*

Bsn. 1/2 *mf*

Cbsn. *mf*

muta in Picc.

muta in Fl.

muta in Ob.

muta in Cl. in B^b

muta in Bsn.

Hrn. 1/3 *mf*

Hrn. 2/4 *mf*

Trp. 1/2/3 *mf*

Tbn. 1/2/3 *mf*

Tuba *mf*

1&2 con sord.

3&4 con sord.

1&2 con sord.

Perc. 1 *mf*

Perc. 2 *mf*

Perc. 3 *mf*

Perc. 4 *mf*

Flexatone

Xylophone with hard mallet

snare with wire brush

Tambourine

Pno. *mf*

Hp. *mf*

Vln. I solo *mf*

Vln. I 2-8 *mf*

Vln. I 9-16 *mf*

Vln. II 1-6 *mf*

Vln. II 7-14 div. *mf*

Vln. II 1-6 *mf*

Vla. 7-12 div. *mf*

Vla. 1-5 *mf*

Vc. 6-10 *mf*

C.B. *mf*

solo

p espressivo

sul tasto

st. I

st. II

st. III

st. IV

st. V

st. VI

st. VII

st. VIII

st. IX

st. X

st. XI

st. XII

st. XIII

st. XIV

st. XV

st. XVI

st. XVII

st. XVIII

st. XIX

st. XX

st. XXI

st. XXII

st. XXIII

st. XXIV

st. XXV

st. XXVI

st. XXVII

st. XXVIII

st. XXIX

st. XXX

rit. molto

subito Concitato $\text{♩} = \text{ca. } 138-152$

Fl. 3

Ob. 1
2

Cl. in B \flat 3

Bsn. 1
2

Hrn. 1
2
3
4

Trp. 1
2
3

Tbn. 1
2

Tuba

Perc. 1
2
3
4

Pno.

Hp.

*with hard mallet
rubor off
con ped.*

subito Concitato $\text{♩} = \text{ca. } 69-76$

Vln. I

Vln. II

Vla.

Vc.

C.B.

This page contains a handwritten musical score for an orchestra, covering measures 90 through 95. The score is written for the following instruments:

- Picc.** (Piccolo): Two staves, measures 90-95.
- Fl.** (Flute): Three staves, measures 90-95.
- Ob.** (Oboe): Three staves, measures 90-95.
- Cl. in Bb** (Clarinet in B-flat): Two staves, measures 90-95.
- Bsn.** (Bassoon): Three staves, measures 90-95.
- Hrn.** (Horn): Four staves, measures 90-95.
- Trp.** (Trumpet): Three staves, measures 90-95.
- Tbn.** (Trombone): Two staves, measures 90-95. Includes the instruction "Tbn.1 senza sord." and "Tbn.3 take a wha-wha mute".
- Tuba**: One staff, measures 90-95.
- Perc.** (Percussion): Four staves, measures 90-95. Includes the instruction "beat roll".
- Pno.** (Piano): Two staves, measures 90-95.
- Hp.** (Harp): Two staves, measures 90-95. Includes the instruction "ch".
- Vln. I** (Violin I): Two staves, measures 90-95.
- Vln. II** (Violin II): Two staves, measures 90-95.
- Vla.** (Viola): One staff, measures 90-95.
- Vc.** (Violoncello): One staff, measures 90-95.
- C.B.** (Contrabass): One staff, measures 90-95.

Measure numbers 90 and 95 are clearly marked at the top of the page. The score includes various musical notations such as notes, rests, dynamics (e.g., *mp*, *mf*, *f*), articulation marks, and performance instructions.

meno mosso (♩ = ca. 126-144)

rit.

100

muta in Fl.

muta in Fl.

muta in Bass Cla. in Eb

UNIS. 03

1 Pic. 2

1 Fl. 3

1 Ob. 2 3

1 Cla. in Bb 2 3

1 Bsn. 2 3

1 Hrn. 2 3 4

1 Trp. 2 3

1 Tbn. 2 3

Tuba

1 Perc. 2 3 4

Marimba with soft mallet

PPP tenuto possibile

dim. al niente

1 Pno. 2

Hp.

Dx Eb/E#F#G#A#

arco sul pont.

arco

low over pressure

rit.

meno mosso (♩ = ca. 126-144)

UNIS

1-6 Vln. I 7-11

12-16 Vln. II

Vla.

Vc.

C.B.

* The pitch is approximate.

Fl. 1

mp mf f mf mp

Ob.

Cl. in Bb

Bsn.

Hrn. 1 2 3 4

mf

Trp.

Tbn.

Tuba

Perc. 1 2 3 4

mf

Snare with wire brush

Cel.

Hp.

f

Vln. I

dir. in 4

Vln. II

dir. in 2

Vla.

f

dir. in 2

Vc.

f

C.B.

f

dir. in 2

115

F.I.

Cla. in B \flat

Ben.

Hrn.

Perc.

Cel.

Hp.

Vln I

Vln II

Vla.

Vc.

C.B.

* Keep the drill mm. 117
 ** Change the string imperceptibly
 *** the note is approximate

This page of a handwritten musical score, numbered 21, contains the following parts and details:

- Fl. 1:** Features a melodic line with dynamic markings *p*, *fp*, *f*, *mf*, and *f*. It includes a triplet of eighth notes and a wavy line indicating vibrato.
- Cl. in Bb 1:** Provides a harmonic accompaniment with dynamic markings *p*, *fp*, *f*, *mf*, and *f*.
- Bsn. 1:** Plays a simple harmonic accompaniment.
- Hrn. 1-4:** Four horns with various parts, including a *pp* marking.
- Perc. 1-4:** Four percussion parts with rhythmic notation.
- cel.:** Cello part with dynamic markings *mf* and *f*.
- Hp.:** Harp part with dynamic markings *mf* and *f*.
- Vln. I:** Violin I section (1-4, 5-8, 9-12, 13-16) with dynamic markings *p*, *f*, and *pp*.
- Vln. II:** Violin II section (1-7, 8-14) with dynamic markings *f* and *pp*.
- Vla.:** Viola part (1-6, 7-12) with dynamic markings *f* and *pp*.
- Vc.:** Violoncello part with dynamic markings *p* and *pp*.
- CB.:** Double Bass part (1-4, 5-8) with dynamic markings *p* and *pp*.

Woodwind section score including Picc., Fl. 1 & 3, Ob. 1 & 2, E.Hrn., Cla. 1 in Bb & 2, Bas. Cla. in Bb, Bsn., and Cbsn. The score features various dynamics such as *mf*, *f*, *sim.*, and *sfz*, along with articulation marks and performance instructions.

Brass section score including Hrn. 1 & 2, 3 & 4, Trp. 1 & 2, Tbn. 1, 2, & 3, and Tuba. The score includes dynamics like *mf*, *sfz*, *sim.*, and *cresc.*, as well as performance markings.

Percussion section score for four players. It includes specific parts for Bongo (high) and Celesta, with dynamics such as *mf* and *cresc.*

String and piano section score including Pno., Hp., Vln. I & II, Vla., Vc., and C.B. The score features dynamics like *mf*, *sfz*, and *sim.*, along with performance instructions and articulation marks.

Picc. *f*

Fl. 1 *f*

Fl. 3 *f*

Ob. 1 *mf*

Ob. 2 *mf*

E.Hrn. *mf*

Cl. 1 in B \flat 2 *mf*

Bas. Cl. in B \flat *mf*

Bsn. 1 *mf*

Bsn. 2 *mf*

Cbsn. *mf*

cresc.

ff

Hrn. 1 *al*

Hrn. 2 *al*

Hrn. 4 *al*

Trp. *f*

Tbn. 1 *p*

Tbn. 2 *p*

Tbn. 3 *p*

Tuba *p*

cresc. poco a poco

molto

molto

molto

molto

molto

molto

Perc. 1 *f*

Perc. 2 *f*

Perc. 3 *f*

Perc. 4 *f*

with medium mallet

f

cresc.

Sus. Cymb. (large) with soft mallet.

Snare with drum stick (med.)

Cel. *Piano*

Hp. *f*

Vln. I *f*

Vln. II *f*

Vla. *f*

Vc. *f*

C.B. *f*

sub p

sub p

sub p

sub p

pizz.

f

cresc.

ff

molto

molto

molto

molto

rit. *molto* *al.* $\frac{3}{4}$ $\text{♩} = \text{ca. } 72-80$

Fl. 1, 2
 Alt. Fl.
 Ob. 1, 2
 E.Hrn.
 Cla. in Eb
 Bar. 1, 2
 Cbn.

Hrn.
 Trp. 1, 2
 Tbn.
 Tuba

Perc.
 1, 2, 3, 4

poco. ped.
Gliss. with metal mallet
mf

Pno.
 Hp.

rit. *molto* *al.* $\frac{3}{4}$ $\text{♩} = \text{ca. } 72-80$

Vln. I (1-8, 9-16)
 Vla. (1-3, 4-6, 7-9, 10-12)
 Vc.
 C.B.

185

Fl.

Ob.

E. Hrn.

Cl. in B \flat

Bass Cl. in B \flat

Bsn.

Hrn.

Trp.

Tbn.

Tuba

Perc.

Cel.

Hp.

Vln. I

Vln. II

Vla.

Vc. Svb.

Vc.

C.B.

200

2/4 3/4

Fl.
Alt. Fl.
Ob. 1
E. Hrn.
Cla. in B \flat
Bas. Cla. in B \flat
Bsn. 1

Handwritten musical notation for woodwinds and brass instruments. Includes dynamic markings like *pp* and *legato possibile*. The Oboe 1 part features a triplet of eighth notes.

Hrn. 1 & 3
Trp.
Tbn.
Tuba

Handwritten musical notation for Horns, Trumpet, Trombone, and Tuba. Includes dynamic markings like *p* and performance instructions such as "1 with harmon mute" and "1 with wah-wah mute".

Perc. 1, 2, 3, 4

Handwritten musical notation for four percussion parts. Part 3 includes the instruction "Vibslp." and a dynamic marking of *mp*.

Cel.
Hp.

Handwritten musical notation for Cello and Harp. The Cello part includes dynamic markings like *p* and *ppp*.

2/4 3/4

Vln. I
Vln. II
Vla.
Vc. Solo
Vc.
C.B.

Handwritten musical notation for string instruments. Includes dynamic markings like *f* and *mp*. The Viola part has the instruction "div. in 2".

210

5/4

poco rit. 2/4 = ca. 72

Fl.
 Alt. Fl.
 Ob. 1 & 2
 E. Hrn.
 Cla. 1 in Bb
 Bsn.

Hrn. 1, 2, 3, 4
 Trp. 1, 2, 3
 Tbn. 1, 2, 3
 Tuba

Perc. 1, 2, 3, 4

Cel.
 Hp.

Vln I 1-8, 9-16
 Vln II 1-7, 8-14
 Vla. 1-6, 7-12
 Vc. 1-5, 6-10
 C.B.

5/4

poco rit. 2/4 = ca. 72

1-3 dir. n. 3 4-6 7-10 1-3 dir. n. 3 4-6 7-8

3/4 230 5/4 4/4

Fl. — — — — —
 Alt. Fl. — — — — —
 Ob. — — — — —
 E. Horn. — — — — —
 Cla. in B^b — — — — — *cla. 3 muta in Bas. Cla. in B^b*
 Bas. — — — — —

Hrn. — — — — —
 Trp. — — — — —
 Tbn. — — — — —
 Tuba — — — — —

1 — — — — —
 2 — — — — —
 Perc. 3 *mp* — — — — —
 4 *mp* — — — — —

Pho. — — — — —
 Hp. — — — — —

Vln. I *mp* — — — — — *mf* — — — — — *mf* — — — — — *dir. in 2*
 Vln. II *mp* — — — — — *mf* — — — — — *mf* — — — — —
 Vla. *mp* — — — — — *mf* — — — — — *mf* — — — — —
 VC. 4-6 *mp* — — — — — *mf* — — — — — *mf* — — — — —
 7-10 *mp* — — — — — *mf* — — — — — *mf* — — — — —
 C.B. 4-6 *mp* — — — — — *mf* — — — — — *mf* — — — — —
 7-8 *mp* — — — — — *mf* — — — — — *mf* — — — — —

4/4 *subito vigoroso* $\text{♩} = \text{ca. } 152$ 3/4 2/4 4/4 3/4

Fl. 1 & 2
Alt. Fl.
Ob. 1 & 2
E. Hrn.
Cla. 1 in B \flat & 2
Bas. Cla. in B \flat
Bsn. 1 & 2

Hrn. 1 & 3, 2 & 4
Trp. 1 & 3
Tbn.
Tuba

con sord. az *f* *senza sord.* *senza sord.*

Perc. 1, 2, 3, 4

Vib. motor slightly on, poco ped. with hard mallet *mp* *damp.*

Pno.
Hp.

sf *sf* *sf*

1-8 Vln. I
9-16 Vln. I
Vln. II
Vla.
Vc.
C.B.

4/4 *subito vigoroso* $\text{♩} = \text{ca. } 152$ 3/4 2/4 4/4 3/4

fff détaché vigoroso *sim.*

3/4 2/4 4/4 2/40

Fl. Alt. Fl. Ob. E. Horn Cla. in B^b Bas. Cla. in B^b Bar. Cbsn.

Hrn. Trp. Tbn. Tuba

Perc. 1-4

Pno. Hp.

Vln. I Vln. II Vla. Vc. C.B.

Handwritten musical notation including notes, rests, dynamics (mf, f, dim. poco), and performance instructions (take soft mallet, arco, div.).

Handwritten musical score for page 44, featuring various instruments and dynamic markings.

Brass Section:

- Hrn. (Horn):** Part 1. Dynamic markings: *pp*, *f*, *pp*, *f*, *f*, *pp*, *mf*. Includes a measure number **246** above the staff.
- Trp. (Trumpet):** Part 1.
- Tbn. (Tuba):** Part 1.
- Tuba:** Part 1.

Percussion Section:

- Perc.:** Parts 1, 2, 3, 4. Includes the instruction *Xyl. with hard mallet* on the right side.

Piano Section:

- Pno. (Piano):** Part 1.
- Hp. (Harp):** Part 1. Includes the instruction *D1C#B°/E#F#G#A#*.

String Section:

- Vln. I (Violin I):** Parts 1-8. Includes *arco* and *3* markings.
- Vln. II (Violin II):** Parts 1-7 and 8-14. Includes *non dir.* and *3* markings.
- Vla. (Viola):** Parts 1-6 and 7-12. Includes *non dir.* markings.
- Vc. (Violoncello):** Part 1. Includes *non dir.* markings.
- C.B. (Cello/Bass):** Part 1. Includes *(mp)* marking.

Other Markings:

- Dynamic markings: *pp*, *f*, *mf*, *ff*, *mp*.
- Performance instructions: *arco*, *non dir.*, *Xyl. with hard mallet*, *D1C#B°/E#F#G#A#*.
- Measure numbers: **246**.

Fl.
Alt. Fl.
Ob.
E. Hrn.
Cla. in B^b
Bsn.
Cbsn

Hrn.
Trp.
Tbn.
Tuba

Perc.
1
2
3
4

Pno.
Hp.

1-8 Vln. I
9-16 Vln. I
1-7 Vln. II
8-14 Vln. II
1-6 Vla.
7-12 Vla.
Vc.
C.B.

250

Fl.
Alt. Fl.
Ob.
E. Hrn.
Cla. in B \flat
Bos. Cla. in B \flat
Bar. 1
Bar. 2
Cbn.

Hrn.
Trp.
Tbn. 3
Tuba

Perc. 1
Perc. 2
Perc. 3
Perc. 4

Pno.
Hp.

Vln. I
Vln. II
Vla.
Vc.
C.B.

3
4

Fl. 1 2
 Alt. Fl.
 Ob. 1 2
 E. Hrn.
 Cla. 1 in Bb 2
 Bas. Cla. in Bb
 Bsn. 1 2

255

1 solo

f

pp

Hrn. 1 2 3
 Trp. 1 2 3
 Tbn. 1 2 3
 Tuba

mf

f

Perc. 1 2 3 4

take hard mallet
 motor off, no ped.

take wire brush

Bass drum with wire brush

pp non cresc.

swish

p non cresc.

Pno.
 Hp.

f

Vln. I 1-8 9-16
 Vln. II 1-7 8-14
 Vla. 1-6 7-12
 Vc. 1-5 6-10
 C.B.

con sord.

m.s.p.

poco a poco cresc.

p

Fl. *ff* *ff* *ff* *ff*

Alt. Fl. *ff* *ff* *ff* *ff*

Ob. *ff* *ff* *ff* *ff*

E. Hrn. *ff* *ff* *ff* *ff*

Cl. in B \flat *ff* *ff* *ff* *ff*

Bas. Cl. in B \flat *ff* *ff* *ff* *ff*

Bsn. *ff* *ff* *ff* *ff*

3/4 *3/4* *3/4* *4/4*

Hrn. *ff* *ff* *ff* *ff* 1,3 2,4

Trp. *ff* *ff* *ff* *ff*

Tbn. *ff* *ff* *ff* *ff*

Tuba *mf* *mf* *ff* *ff*

Perc. 1 *ff* *ff* *ff* *ff*

Perc. 2 *ff* *ff* *ff* *ff*

Perc. 3 *ff* *ff* *ff* *ff*

Perc. 4 *ff* *ff* *ff* *ff*

Mark tree

take soft mallet

Pno. *ff* *ff* *ff* *ff*

Celesta

Hp. *mf* *mf* *ff* *ff*

CH / PHAB

3/4 *3/4* *3/4* *4/4*

Vln. I 1-8 *mf* *mf* *ff* *ff*

Vln. I 9-16 *mf* *mf* *ff* *ff*

Vln. II 1-7 *mf* *mf* *ff* *ff*

Vln. II 8-14 *mf* *mf* *ff* *ff*

Vla. 1-6 *mf* *mf* *ff* *ff*

Vla. 7-12 *mf* *mf* *ff* *ff*

Vc. 1-5 *mf* *mf* *ff* *ff*

Vc. 6-10 *mf* *mf* *ff* *ff*

C.B. *mf* *mf* *ff* *ff*

poco s.p. senza sord.

poco s.p. senza sord.

poco s.p. senza sord.

poco s.p. senza sord.

senza sord.

senza sord.

poco s.p. senza sord.

poco s.p. senza sord.

$\frac{3}{4}$ meno mosso
♩ = ca. 116-126

$\frac{2}{4}$

Ob. 1 *1 solo*
 Cla. in Bb *1 solo*
 mp

Hrn. 1 & 2

Perc. 1-4

take bow (Vib) ped.
4 Temple Blocks with medium mallets
 mp

Cel.
 Hp.

Vln. I 1-8
 Vln. I 9-16
 Vln. II 1-7
 Vln. II 8-14
 Vla. 1-6
 Vla. 7-14
 Vc.
 C.B.

sub. EP sempre
sub. EP sempre
sub. EP
sub. EP
sub. EP
sub. EP

ord. 5
poco a poco
cresc.
poco a poco
cresc.

$\frac{3}{4}$ = ca. 116-126

2/4 3/4 4/4

275

Fl. 3
 Ob. 1
 E.Hrn.
 Cla. in B^b
 Bsn. 1

Hrn. 1
 2

Perc.
 1
 2
 3
 4

Cel.
 Hp.

1-8
 9-16
 1-2
 3-14
 1-6
 7-12
 Vc.
 C.B.

meno P

mf

1. Picc. 2. Picc. 3. Fl. 4. Ob. 5. E.Hrn. 6. Cla. in B^b 7. Bsn. 1. 2. Hrn. 3. 4. Trp. 5. 6. Tbn. 7. Tuba. 8. Perc. 9. Cel. 10. Hp. 11. Vln. I 12. Vln. II 13. Vla. 14. Vc. 15. C.B.

* permanently moving glissando and the pitch is approximately.

Handwritten musical score for a symphony orchestra, page 54. The score is divided into several sections:

- Woodwinds:** Piccolo (Picc.), Flute (Fl.), Oboe (Ob.), Clarinet in B-flat (Cla. in B^b), Bassoon (Bsn.), and Contrabassoon (Cbsn.).
- Brass:** Horns (Hrn.), Trumpets (Trp.), Trombones (Tbn.), and Tuba.
- Percussion:** Four staves (1-4) including Six Cymbals with soft mallet, Snare, and other percussion instruments.
- String Instruments:** Violin I (Vln. I), Violin II (Vln. II), Viola (Vla.), Violoncello (Vc.), and Contrabass (C.B.).

The score includes various musical notations such as dynamics (p, mf, f, sf, fff), articulation (accents, slurs), and performance instructions. A large handwritten number '3' is written above the woodwind and brass staves in the right-hand section. The string section features complex rhythmic patterns, including triplets and sixteenth-note runs.

*bow pressure

2 3 2 3
7+8 7 7 = ca 116 7

Picc. *breath noise with tone*

Fl. 3

Ob. 1 2

Cla. in Bb 1 3

Bsn. 1 2

cresc. *ff*

Hrn. 1 2

Trp. 1 2

Tbn. 1 2

cresc. *mf* *ff*

Perc. 1 2 3 4

B.D. with wire brush swish

Timps. with wire brush EP non cresc.

EP non cresc.

take bow

Pno.

Hp.

Vln. I 1-8

Vln. II 9-16

Vla.

Vc.

C.B.

arco *arco* *arco* *arco*

harm. gliss. *harm. gliss.* *harm. gliss.* *harm. gliss.*

poco s.p. *con sord.* *con sord.* *con sord.*

5-8 *5-8* *5-8* *5-8*

div. in 2 *1-5* *6-7* *ord.*

1-2 *3-4* *5-6* *7-8*

EP non cresc.

accel. poco

2 *Concitato*
♩ = ca. 138-152
3/4

Picc. 2

Fl. 3

Ob. 1
2

Cla. in Bb 1
2
3

Bsn. 1
2

Hrn. 1
2
3

Trp. 1
2
3

Tbn. 1
2

Perc. 1
2
3
4

Crot. with bow

Xyl. with medium mallet

3 Snare

Tamb.

con ped. motor slightly on take hard mallet

Pno.

Mp.

2 *Concitato*
♩ = ca. 69-72

accel. poco

ord. 1-8 senza sord.

ord. 9-16 senza sord.

spicc.

unis.

senza sord.

pizz. tutti

div. in 2

1-4

5-8

1-4

5-8

1-6

7-11

1-5

8-10

1-6

7-8

Picc. 1, 2
Fl. 3
Ob. 1, 2, 3
Cla. in Bb 1, 2, 3
Bsn. 1, 2
Cbsn.

Handwritten musical notation for woodwinds. Includes dynamics like *f*, *sfz*, *mf*, *cresc.*, and *poco a poco*. Performance instructions include *senza sord.* and *cresc. poco a poco*.

Hrn. 1, 2, 3
Trp. 1, 2, 3
Tbn. 1, 2, 3
Tuba

Handwritten musical notation for brass. Includes dynamics like *sfz*, *mf*, *f*, and *cresc.*. Performance instructions include *senza sord.* and *cresc. poco a poco*.

Perc. 1, 2, 3, 4

Handwritten musical notation for percussion. Includes dynamics like *mf*, *ff*, and *f*. Performance instructions include *mf no ped.*, *mf*, *ff*, and *Cymb. (large) with soft mallet*.

Pno.
Hp.

Handwritten musical notation for piano and harp. Includes dynamics like *ff*, *f*, and *mf*. Performance instructions include *mf no ped.*, *mf*, *ff*, and *sim.*

Vln. I 1-8, 9-16
Vln. II
Vla.
Vc. 1-5, 6-10
C.B. 1-4, 5-8

Handwritten musical notation for strings. Includes dynamics like *f*, *mf*, *ff*, and *cresc.*. Performance instructions include *mf no ped.*, *mf*, *ff*, *sim.*, and *cresc. poco a poco*.

320

allarg. *a tempo* *rit.*

Picc. 1, 2

Fl. 3

Ob. 1, 2, 3

Cla. in Bb 1, 2, 3

Bsn. 1, 2

Cbsn.

Hrn. 1, 2, 3

Trp. 1, 2, 3

Tbn. 1, 2, 3

Tuba

Perc. 1, 2, 3, 4

Pno.

Hp.

cresc. poco a poco *tan-tan* *Gsp.*

allarg. *a tempo* *rit.*

Vln. I 1-8, 9-16

Vln. II

Vla.

Vc. 1-5, 6-10

C.B. 1-4, 5-8

arco *pizz.* *mf* *dim.* *div.* *mk*

Prcc. *1* *breath noise with tone* *mf*

Fl. *breath noise with tone* *mf* *muta in Alt. Fl.*

Ob. 1/2 *mf*

E. Horn.

Cl. in Bb

Cl. in Eb *breath noise with tone* *mf*

Bsn.

Cbsn.

Hrn.

Trp. 1/3 *hamon mute* *f*

Tbn.

Tuba

1 *motor off, ped. take two bows* *hp* *mf*

2 *Crot.* *with bat* *f*

3 *3 Snare (small)*

4 *drum*

Pno.

Hp.

1-8 Vln. I *f*

9-16 Vln. I *f*

1-7 Vln. II *f*

8-14 Vln. II *f*

1-6 Vla. *f* *unis.*

7-12 Vla. *f* *unis.*

1-5 Vc. 6-8 *1 solo sp.* *fff* *cresc. poco a poco* *P* *f* *mf*

9-10 Vc. 9-10 *f*

1-6 C.B. *f* *unis.*

7-8 C.B. *drum*

poco a poco rit. ----- al. ----- ♩ = ca. 80-88

335

5
0
0

1&2 muta in Fl.

Picc. Fl. Ob. E.Hrn. Cla. in Bb Cla. in Eb Bas. Cla. in Bb Bon. Cbsn.

Hrn. 1/2 3/4 Trp. 1/2 3/4 Tbn. 1/2 3/4 Tuba

only breath noise ae without key
 only breath noise ae without key f
 senza sord. only breath noise as without key f
 only breath noise without key f

1&2 III
3&4 I II
ESP molto

Perc. 1 2 3 4

bent smish take drum stick

f

Pno. Hp.

DACHBA/ETFOGAP

poco a poco rit. ----- al. ----- ♩ = ca. 40-44 (♩ = ca. 80-88)

5
0
0

Vln. I Vln. II Vla. Vc. solo Vc. C.B.

senza sord. tutti sul pont.
 senza sord. tutti sul pont.
 (sul pont.)
 dim. ----- I
 P 2-4 ord. III
 ord.
 tutti ord.
 ord.
 ESP molto
 ESP molto
 ESP molto
 ESP molto

5 *subito Vigoroso* $\text{♩} = ca. 72$ 4+1 5 2+1 5

8+16 8+16 8+16

Fl. 1, 2 *ff*

Alt. Fl. *ff*

Ob. 1, 2 *ff*

E. Hr. *ff* (b2)

Cl. in Bb *ff*

Cl. in Eb *ff*

Bas. Cl. in Bb *ff*

Bsn. 1, 2 *ff*

Cbsn. *ff*

Hrn. 1, 2, 3 *ff*

Trp. 1, 2, 3 *ff*

Tbn. 1, 2, 3 *ff*

Tuba *ff*

Perc. 1 *ff* *Mar. with hard mallet* *whip*

Perc. 2, 3, 4 *ff*

Pno. *ff*

Hp. *ff* *Db/E#F#* *ff* *Db/E#G#A#*

subito Vigoroso $\text{♩} = ca. 72$ 4+1 5 2+1 5

8+16 8+16 8+16

Vln. I *ff*

Vln. II *ff*

Vla. *ff*

Vc. *ff*

C.B. *ff*

Handwritten musical score for a symphony orchestra, page 65. The score is divided into several systems of staves, each representing a different instrument or section. The tempo is marked as $\text{♩} = \text{ca. } 132-144$.

Flutes: Fl. 1 and Fl. 2. Fl. 2 has a handwritten instruction "Fl. 2 muta in Picc." with an arrow pointing to the Piccolo staff. Fl. 1 has a handwritten instruction "Fl. 1" and "picc." with an arrow pointing to the Piccolo staff. The Piccolo part is marked "P" and "picc. solo".

Woodwinds: Includes Oboe (Ob.), English Horn (E.Hrn.), Clarinet in Bb (Cla. in Bb), Clarinet in Eb (Cla. in Eb), Bass Clarinet in Bb (Bas. cla. in Bb), Bassoon (Bsn.), and Contrabassoon (Cbsn.).

Brass: Includes Horns (Hrn.), Trumpets (Trp.), Trombones (Tbn.), and Tuba.

Percussion: Includes Snare Drum (Srd.), Cymbals (Cym.), and Triangle (Trgl.).

Keyboard: Piano (Pno.) and Harpsichord (Hp.).

Strings: Violin I (Vln. I), Violin II (Vln. II), Viola (Vla.), Violoncello (Vc.), and Contrabass (C.B.).

Handwritten Annotations:

- "muta in Fl" (change to Flute)
- "picc." (piccolo)
- "picc. solo"
- "182 con sord." (182 with mutes)
- "mf" (mezzo-forte)
- "f" (forte)
- "ff" (fortissimo)
- "non legato"
- "div. pizz." (diverse pizzicato)
- "3 Trgl." (3 Triangle)
- "take drum stick"
- "Cymb." (Cymbal)
- "Srd." (Snare Drum)
- "mf" (mezzo-forte)
- "ff" (fortissimo)

The score features complex rhythmic patterns, including triplets and sixteenth notes. The dynamic markings range from *mf* to *ff*. The tempo is consistently marked as $\text{♩} = \text{ca. } 132-144$.

Picc. Fl. 1 Ob. 1 E.Hrn. Cl. in Bb Cl. in Eb Bas. Cl. in Bb Bsn. Cbsn.

Handwritten musical notation for woodwinds. Includes dynamic markings like *f*, *mf*, and *sfz*. A rehearsal mark '350' is present above the Flute 1 staff.

Hrn. 1/2 Trp. 2 Tbn. Tuba

Handwritten musical notation for brass instruments. Includes dynamic markings like *mf*, *sfz*, and *sf*. A note in the Trombone part is annotated with 'a3 only breath noise'.

Perc. 1 2 3 4

Handwritten musical notation for percussion instruments. Includes dynamic markings like *mf* and *ff*.

Pno. Hp.

Handwritten musical notation for Piano and Harpsichord. Includes dynamic markings like *ff*, *sim.*, and *mf*. Performance instructions like 'DACHEN/ EHC/GAAP' are written above the Harpsichord staff.

Vn. I Vn. II Vla. Vc. C.B.

Handwritten musical notation for strings. Includes dynamic markings like *mp*, *f*, and *mf*. A note in the Viola part is annotated with 'div. in 2'.

Handwritten musical score for a symphony orchestra, page 67. The score is divided into several systems of staves, each representing a different instrument or section.

Woodwinds: Flute (Fl.), Oboe (Ob.), English Horn (E.Hrn.), Clarinet in Bb (Cla. in Bb), Bass Clarinet in Bb (Bas. Cla. in Bb), and Bassoon (Bsn.).

Brass: Horns (Hrn.), Trumpet (Trp.), Trombone (Tbn.), and Tuba.

Percussion: Perc. (Percussion).

Keyboard: Piano (Pno.) and Harpsichord (Hp.).

Strings: Violin I (Vln I), Violin II (Vln II), Viola (Vla.), Violoncello (Vc.), and Contrabass (C.B.).

Performance Instructions: The score includes various performance markings such as *pp*, *sfz*, *mf*, *mp*, *mp cresc.*, *arco*, *pizz.*, *div.*, and *only breath noise*. There are also dynamic hairpins and slurs throughout the score.

Tempo and Meter: The tempo is marked as *♩ = ca. 88-92*. The meter is 4/4, indicated by a large '4' over a slash at the beginning of the score.

Page Markings: The page number '67' is in the top right corner. There are also some circled numbers and markings, possibly indicating rehearsal points or specific measures.

4/4

365

UNIS. picc. & Fl.

Fl. 1

Fl. 3

Ob. 1 & 2

E.Hrn.

Cla. in Bb

Cla. in Eb

Bas. cla. in Bb

Bsn. 1 & 2

Cbsn.

Hrn. 1 & 2

Trp. 1 & 2

Tbn. 1 & 2

Tuba

Perc. 1, 2, 3, 4

Pno.

Hp.

Vln. I

Vln. II

Vla.

Vc.

C.B.

muta in Alt. Fl.

almost breath noise

1 con sord. senza sord.

8va

mf, *mp*, *mf*, *ff*, *ff poco a poco cresc. sempre*, *sempre*

arco, *pizz. non dir.*

Egg Shaker, *Timpani*

3

allarg.

molto!!

ca. 69-72

310

Picc. *molto*

Fl. *molto*

Alt. Fl. *molto*

Ob. 1 & 2 *molto* *sub. ff* — *mf*

E.Hrn. *molto*

Cl. in Bb *molto*

Cl. in Eb *molto* *muta in Cl. in Bb*

Bas. Cl. in Bb *molto*

Bsn. 1 & 2 *molto*

Cbsn. *molto*

Hrn. 1, 2, 3 *molto*

Trp. 1, 2, 3 *molto*

Tbn. 1, 2, 3 *molto*

Tuba *molto*

Perc. 1, 2, 3, 4 *molto*

3 Sus. Cymb. with soft mallet *ff* *cresc.*

piu ff *cresc.* *molto*

piu ff *cresc. molto* *molto*

Pno. *molto*

Hp. *molto*

D C# B A E F G# A

Vln. I *molto* *sub. f* *div. poco s.p.*

Vln. II *molto* *sub. f* *div.*

Vla. *molto* *sub. f*

Vc. *molto* *sub. f*

C.B. *molto* *sub. mf* — *P*

allarg.

molto!!

ca. 69-72

Handwritten musical score for a symphony orchestra, page 71. The score is divided into several sections:

- Woodwinds:** Piccolo (Picc.), Flute (Fl.), Alto Flute (Alt. Fl.), Oboe 1 (Ob. 1), Clarinet in Bb (Cla. in Bb), Bassoon (Bsn.).
- Brass:** Horns (Hrn.), Trumpet (Trp.), Trombone (Tbn.), Tuba.
- Percussion:** Perc. (4 staves).
- Keyboard:** Piano (Pno.), Harp (Hp.).
- Strings:** Violin I (Vln. I), Violin II (Vln. II), Viola (Vla.), Violoncello (Vc.), Contrabass (C.B.).

The score includes various musical notations such as dynamics (mf, f, cresc., poco a poco), articulation (accents, slurs), and performance instructions (e.g., "Mark tree", "mf espr."). There are also handwritten annotations like "3/5" and "3/4" above some staves. The piece is in 4/4 time, with a key signature of one sharp (F#).

2/4 3/4 5/4

380

Picc.

Fl.

Alt. Fl.

Ob. 1

Ob. 2

Cl. in Bb 1

Cl. in Bb 2

Bsn.

Hrn.

Trp.

Tbn.

Tuba

Perc. 1

Perc. 2

Perc. 3

Perc. 4

3 Snare with drum stick

Pno.

Celesta

Hp.

Vln. I 1-8

Vln. I 9-16

Vln. II

Vla.

Vc.

C.B.

poco a poco cresc.

rit. 5 2 1 8 16 molto

Picc. Fl. Alt. Fl. Ob. 1 & 2 E.Hrn. Cla. 1 in B^b 2 Bas. Cla. in B^b Bsn. 1 & 2 Cbsn.

Hrn. 1 & 2 Trp. 1 & 2 Tbn. 1 & 2 Tuba

Perc. 1-4 Vib. with medium mallet Glsp. Flexatone Vitrsp. with drumstick Bass Drum Timp.

Cel. Hp. Piano

Vln. I 1-8 Vln. II 1-8 Vla. 1-6 Vc. 1-5 C.B. 6-10

poco a poco cresc. *mf* *mp* *f* *ff* *pp* *ppp* *dim.* *harm. gliss.* *rit.* *molto*

* The note is approximate and moving permanently
 ** Very fast glissando from main note to grace note
 *** change the string imperceptibly

5/8 +1
8/16 subito con moto
♩ = ca. 184

4/1
8/16

385

Picc. Fl. Alt. Fl. Ob. E. Hrn. Cla. in Bb Bas. Ch. in Bb Bsn. Cbsn.

Handwritten musical notation for woodwinds and percussion. Includes dynamic markings like *mp*, *f*, *mf*, *ff*, *ad*, and *pp*. Features various articulations and slurs.

Hrn. 1, 2, 3, 4 Trp. Tbn. 1, 2, 3 Tuba

Handwritten musical notation for brass instruments and horns. Includes dynamic markings like *mp*, *f*, *mf*, *ff*, *ad*, and *pp*. Features various articulations and slurs.

Perc. 1, 2, 3, 4

Handwritten musical notation for four percussion parts. Includes dynamic markings like *pp*, *mp*, *mf*, *ff*. Includes the instruction "Whip" for the second part.

Pno. Hp.

Handwritten musical notation for piano and harpsichord. Includes dynamic markings like *mp*, *mf*, *f*, *ff*, *pp*. Includes the instruction "silk bass" for the piano part.

5/8 +1
8/16 subito con moto
♩ = ca. 184

4/1
8/16

Vln. I, Vln. II, Vla., Vc., C.B.

Handwritten musical notation for strings. Includes dynamic markings like *mp*, *mf*, *f*, *ff*. Includes the instruction "Bartok pizz." for various parts.

Allegro
♩ = ca. 144

Picc. *sfz*

Fl. *sfz*

Alt. Fl. *sfz*

Ob. *sfz*

E.Hrn. *sfz*

Cla. in Bb *sfz*

Cla. in Eb *sfz*

Bas. Cla. in Bb *sfz*

Bsn. *brassy tone* *sfz*

Cbn. *brassy tone* *sfz*

sempre sim.

Hrn. 1 *sfz*

Hrn. 2 *sfz*

Trp. 1 *sfz*

Trp. 2 *sfz*

Trp. 3 *sfz*

Tbn. 1 *sfz*

Tbn. 2 *sfz*

Tuba *sfz*

sempre sim.

Perc. 1 *damp.* *sfz*

Perc. 2 *sfz*

Perc. 3 *damp.* *sfz*

Perc. 4 *sfz*

2 Bongos with hard mallet

sempre sim.

Pno.

Hp.

Allegro
♩ = ca. 144

Vln. I *div. sul pont. II* *sfz*

Vln. II *sfz*

Vla. *sfz*

Vc. *sfz*

C.B. *sfz*

sfz

400

3/4

Picc. Fl. ALF. Fl. Ob. 1/2 E. Hrn. Cla. in Bb Cla. in Eb Bas. Cla. in Bb Bsn. 1/2 Cbsn.

Handwritten musical notation for woodwinds and brass instruments. Includes dynamic markings such as *pp non cresc.* and *pp*. A note in the Flute part is marked *muta in Fl.*

Hrn. 1/2 3 Trp. Tbn. Tuba

Handwritten musical notation for horns, trumpets, and tubas. Includes dynamic markings such as *pp damp.* and *pp*. A note in the Trumpet part is marked *1&2*.

Perc. 1 2 3 4

Handwritten musical notation for percussion instruments, including snare, tom-toms, and cymbals.

Pno. HP.

Handwritten musical notation for piano and harp. Includes dynamic markings such as *pp* and *ppp*. A note in the Harp part is marked *D C B Bb / E F G A B*.

1-8 Vln I 9-16 Vln II Vla. Vc. C.B.

Handwritten musical notation for strings. Includes dynamic markings such as *pp poco a poco cresc.*, *ord. poco a poco cresc.*, *ord. poco a poco s.p.*, *cresc.*, and *pp*. A note in the Violin I part is marked *gliss.*

4/4 3/4 3/4

Picc. Fl. 1 3 Ob. 1 2 E.Hrn. Cla. in B^b Cla. in E^b Bas. Cla. in B^b Bsn. 1 2 Obsn. Hrn. Trp. Tbn. Tuba Perc. 1 2 3 4 Pno. Hp. Vln. I Vln. II Vla. Vc. C.B.

Handwritten musical score for a symphony orchestra, page 178 (405). The score is divided into four systems. The first system includes woodwinds (Piccolo, Flutes, Oboes, English Horn, Clarinets, Bass Clarinet, Bassoons, Contrabassoon) and brass (Horns, Trumpets, Trombones, Tuba). The second system includes Percussion (Tub. Bells, Trgl. (small), Bass Drum) and strings (Violins I & II, Viola, Violoncello, Contrabass). The third system includes Piano and Harp. The fourth system includes Violins I & II, Viola, Violoncello, and Contrabass. The score features various dynamics (pp, p, mp, mf, f, ff, sub. mp, damp., senza sord., con sord.), articulation (acc., stacc., marc.), and performance instructions (div. in 2, cresc., decresc., mf cresc., sub. mp). There are also some handwritten notes like 'ff non cresc. possib.' and 'D4C#B7/E4F#G#A'.

Scintillante
♩ = ca. 72

Estinto e Tempo Rubato

Picc. *pp cresc.* *pp* *sffz damp.*

Fl. 1-3 *sub p cresc.* *(mp)* *sffz damp.*

Ob. 1-2 *sub p cresc.* *(mp)* *sffz damp.*

E. Hrn. *pp* *sffz damp.*

Cla. in B^b *sub p cresc.* *(mp)* *sffz damp.*

Cla. in E^b *sub p cresc.* *(mp)* *sffz damp.*

Bas. Cla. in B^b *pp* *sffz*

Bsn. *pp*

Cbsh. *pp*

Hrn. *pp*

Trp. *pp*

Tbn. *pp*

Tuba *pp*

Perc. 1 *pp* *cresc.* *Gisp.* *sffz damp.* *Crotales with bow* *pp* *morendo*

Perc. 2 *pp*

Perc. 3 *pp*

Perc. 4 *pp* *cresc.* *sffz damp.*

Pno. *pp*

Hp. *sffz*

Scintillante
♩ = ca. 72

Estinto e Tempo Rubato

1-8 Vln I *sub p cresc.* *(mf)* *sffz damp.* *1 solo* *pp flautando* *pp*

9-16 Vln I *sub p cresc.* *(mf)* *sffz damp.*

Vln II *sub p cresc.* *(mf)* *sffz damp.*

Vla. *sub p cresc.* *(mf)* *sffz damp.*

1-5 Vc. *pp* *cresc.* *(pp)* *sffz damp.*

6-10 Vc. *pp* *cresc.* *(pp)* *sffz damp.*

C.B. *pp* *cresc.* *(pp)* *sffz damp.*