

UCLA

UCLA Previously Published Works

Title

Facilitating Complex Trait Analysis via Reduced Complexity Crosses

Permalink

<https://escholarship.org/uc/item/8ft0c6vm>

Journal

Trends in Genetics, 36(8)

ISSN

0168-9525

Authors

Bryant, Camron D
Smith, Desmond J
Kantak, Kathleen M
[et al.](#)

Publication Date

2020-08-01

DOI

10.1016/j.tig.2020.05.003

Peer reviewed

Facilitating Complex Trait Analysis via Reduced Complexity Crosses

Camron D. Bryant^{1*} Desmond J. Smith², Kathleen M. Kantak³, Thaddeus S. Nowak, Jr.⁴, Robert W. Williams⁵, M. Imad Dmaj⁶, Eva E. Redei⁷, Hao Chen⁸, and Megan K. Mulligan⁵

¹Laboratory of Addiction Genetics, Department of Pharmacology and Experimental Therapeutics and Psychiatry, Boston University School of Medicine, 72 E. Concord Street, L-606C, Boston, MA 02118 USA

² Department of Molecular and Medical Pharmacology, David Geffen School of Medicine, UCLA, Box 951735, Los Angeles, CA 90095 USA

³ Department of Psychological and Brain Sciences, Boston University, 64 Cummington Mall, Boston, MA 02215, USA

⁴ Department of Neurology, College of Medicine, The University of Tennessee Health Science Center, 855 Monroe Ave., Memphis, TN 38163 USA

⁵ Department of Genetics, Genomics and Informatics, College of Medicine, The University of Tennessee Health Science Center, 71 S. Manassas, Memphis, TN 38163 USA

⁶ Department of Pharmacology and Toxicology, Virginia Commonwealth University, Smith 652, Richmond, VA 23298 USA

⁷ Department of Psychiatry and Behavioral Sciences and Physiology, Northwestern University, Feinberg School of Medicine, 303 E. Chicago Av, Chicago, IL USA

⁸ Department of Pharmacology, Addiction Science, and Toxicology, College of Medicine, The University of Tennessee Health Science Center, 71 South Manassas, Memphis, TN 38163 USA

*Correspondence: camron@bu.edu

KEYWORDS: GWAS, functional variant, rat genetics, positional cloning, substrain, QTL

ABSTRACT

Rodent quantitative trait mapping seeks to identify mutations underlying variation in disease-relevant traits. Poor locus resolution and high genetic complexity thwart discovery. In this review, we discuss how Reduced Complexity Crosses (RCCs) between isogenic substrains accelerate discovery by decreasing the number of segregating variants by several orders of magnitude. The simple genetic architecture of RCCs permits immediate fine mapping to narrow loci and dissect complex traits. Sequencing new substrains will expand translational genetics for complex diseases. Array- and sequencing-based genotyping tools and systems genetics facilitate gene variant discovery and network biological mechanisms. Validation via gene editing is straightforward and demonstrates causality via both necessity and sufficiency on two near-isogenic backgrounds. In summary, RCCs permit rapid discovery-based genetics of complex traits.

Reduced Genetic Complexity Accelerates Variant Discovery

Genome-wide association studies (GWAS) and **quantitative trait locus (QTL)** (See glossary) mapping are discovery-based approaches to identify novel genetic factors and biological mechanisms underlying complex traits in model organisms and humans. While discovery-based genetics has been highly successful at identifying regions associated with trait variation, identification of the causal genes and variants remains a major challenge[1]. Two roadblocks stifle gene/variant identification. First, several thousand genetically diverse individuals are required to achieve sufficient power to detect the small effects of common variants in a typical GWAS. The true causal variant(s) are frequently unknown. Second, classic rodent mapping populations yield large, poorly resolved loci containing hundreds of genes and thousands of potential variants. **A surprising solution to these roadblocks has emerged as a byproduct of the cumulative fixation of residually heterozygous variants and spontaneous mutations (genetic drift, Box 1) in closely related, yet phenotypically divergent, rodent inbred substrains.** Advances in whole genome sequencing permit 1) causal identification of gene variants underlying phenodeviation and 2) the development of high throughput genotyping platforms (targeted sequencing and custom DNA microarrays). The purpose of this review is to introduce **Reduced Complexity Crosses (RCCs)** as a simple and powerful solution for rapid, high-confidence gene discovery for complex traits (**Figure 1, Panel A**).

Reduced Complexity Crosses (RCCs) between near **isogenic** substrains reduce genetic diversity (complexity) in a population, yielding QTLs with fewer candidate variants using a smaller number of individuals. Separation and maintenance of **substrain** colonies from **inbred strains** created decades earlier has created a rich resource of isogenic strains with varying degrees of genetic relatedness (**Table 1**). Several have been fully sequenced, creating a database of variants that can be used both as genetic markers for QTL mapping and positional candidate gene variants. Several isogenic strains demonstrate robust and heritable phenotypic variance **despite** very low genetic diversity. For these traits, the RCC strategy is ideal for rapid identification of large-effect **quantitative trait genes (QTGs)** and **variants (QTVs)** [2,3]. QTLs in RCCs contain orders of magnitude fewer variants compared to crosses between more divergent parental inbred strains, thus facilitating QTV identification and exemplifying that physical precision is not always necessary (**Figure 1, Panels B and**

C). Validation of QTVs from a RCC is achieved via CRISPR-Cas9 gene editing to demonstrate that a variant is both necessary (*i.e.* repair of the QTV in the mutant line) and sufficient (*i.e.* introduction of the QTV on the wild-type, ancestral line) for the predicted phenotype in two isogenic backgrounds.

Theoretical Limits on Genetic Complexity in a RCC

How much should the segregating variant pool be “reduced” in order to be considered a RCC? Conversely, how “complex” can a genetic cross be before it no longer affords the advantages of a RCC? **The answers depend partly on the trait and its genetic architecture in a particular RCC.** At some point, the number of variants that distinguish progenitor lines is low enough to be easily quantified using genomic sequencing and a RCC is no longer an efficient method to identify QTVs. There is also an upper variant limit after which the RCC approach becomes equivalent to a standard F2 cross between divergent inbred strains and QTVs are no longer easily resolved. To address these questions, we consider a case of low versus moderate genomic complexity. **A discussion regarding sources of genetic variation and mutation rates can be found in Box 1.**

In the first example, several BXD Recombinant Inbred (RI) strains were separated at different breeding colonies, which led to genetic drift and new substrains. The BXD29/TyJ-*Tlr4*^[ps-2] (BXD29 mutant) substrain exhibits spontaneous bilateral subcortical heterotopias with partial callosal agenesis and deficits in auditory processing compared to the progenitor BXD29 strain[4]. The causal variants are unknown, but the traits exhibit a two-locus autosomal recessive mode of inheritance. This is an extreme case of reduced complexity whereby sequencing identified ~1000 distinguishing variants. **Although low, the number of variants is too high** to identify causal QTVs by sequencing alone and mapping in a RCC is required.

The second example comes from the high demand for B6 mice that **spawned multiple breeding locations and the** creation of multiple substrains currently separated by hundreds of generations at different institutions. In the 1950s, the C57BL/6N (N) lineage from NIH was separated from the C57BL/6J (J) breeding colony at The Jackson Laboratory at F32 which split the B6 lineage into two branches. Trait differences have been described, mainly between these lineages[5–7]. (**Table 1**). The number of variants distinguishing J versus N lineages is estimated between 10K and 20K (SNPs and indels) [6,8,9]. Causal gene variants for most phenotypic differences have not been identified

and will require RCCs. Functional variants in *Nnt* and *Crb1* with a large impact on phenotypes were identified[6] and a *Cyfp2* variant demonstrates a pleiotropic impact on psychostimulant behaviors and binge eating[10,11]. Discovery of *Cyfp2* required only 100 to 200 RCC individuals. However, some traits in B6 RCCs could exhibit polygenic inheritance underlying trait variation. A reasonable strategy is to assume a one-locus model and power the study based on the parental effect size using R/qtldesign[12]. If no QTLs or suggestive QTLs [e.g., a **Logarithm of the Odds (LOD) score** greater than 3 [13] or the permissive, yet conventional “suggestive” genome-wide p-value of less than 0.63 based on permutation analysis[14]] are identified, then multiple, smaller effect loci could underlie parental substrain differences which requires a larger sample size.

Ultimately, the lower limit of genetic complexity in a RCC with regard to variant load depends on genomic sequencing and bioinformatics to resolve the causal variant(s). Approaches such as ENU mutagenesis employed a similar isogenic cross mapping strategy for decades and genomic sequencing now provides the ability to map causal variants[15]. If parental substrains do not phenotypically deviate, then ENU mutagenesis followed by an RCC can be used to map the phenodeviant followed by sequencing to identify the causal QTV[16]. Validation of predicted high impact variants (e.g., variants within/near genes possessing *cis*-**eQTLs**) is then conducted using gene editing (**Figure 1, Panel A**). If a candidate causal variant is not revealed by sequencing, then generation and targeted mapping with a cohort of RCC individuals using candidate variants and locus-specific markers is required to resolve candidate QTGs and QTVs[17].

RCC with tens of thousands of variants have yielded clear causal variants, suggesting that the upper limit of genetic complexity providing RCC advantages has not been reached. However, at some point, increasing genetic complexity defeats the advantages of a RCC. As a case in point, consider the number of variants per 20 Mb interval (indicated in brackets; assuming a genome size of 2.6 billion bases and random placement of variants) when the variant load is 1,000 (8), 10,000 (76), 100,000 (756), or 1 million (7564). Once the number of segregating variants distinguishing progenitor strains swells into hundreds of thousands or millions, the number of variants within a candidate interval becomes intractable. As the number of segregating variants increases, so does the genetic complexity of a locus and the overall genetic architecture of a trait, such that additional additive or non-additive loci contribute to trait variation and obscure single-gene/variant identification. Thus, theoretical consideration of the

total number of variants is worthwhile. For lower variant limits in a RCC, investigators should assess the likelihood that sequencing alone can identify causal variants with high confidence among isogenic strains. If there are one or two obvious candidate variants, it is worth considering skipping the mapping step and moving straight to gene validation. For upper limits, investigators should consider trait and QTL effect size, possible underlying genetic architecture, QTL precision (the size of candidate loci) and the number of genes and variants likely to be harbored by a QTL.

RCC Design and Exemplary Behavioral Differences among Mouse and Rat Substrains

A successful RCC experiment requires heritable trait differences between substrains, a compendium of sequence variants, a marker panel and genotyping strategy, and QTL mapping software to link marker genotypes with trait variation to identify high confidence genomic intervals containing QTGs and QTVs (**Figure 1, Panel A**).

A critical step is the identification of phenotypic differences between substrains. Judicious selection of parental isogenic strains with desired trait differences can be difficult. The most efficient strategy is to screen as many substrains as possible for reported or suspected phenotypic differences and then focus on the most closely related substrains exhibiting the most robust trait divergence. Closely related substrains are more useful because they possess fewer genetic variants, making gene identification easier. Sequenced genomes and pre-existing genotyping strategies accelerate QTG and QTV identification.

Mouse substrains displaying robust phenotypic differences such as sequenced C57BL/6 substrains (**Table 1**), are ripe for constructing RCCs and span multiple facets of biology and diseases, including alcohol [18], opioid[19], cocaine[10], nicotine[20], and methamphetamine behaviors[21-23], eating disorders[11], pain[5,24], stroke[25,26], circadian activity[27], [and brain morphology, including corpus callosum](#)[28]. Inbred rat strains have also been housed for hundreds of generations at over 20 breeding facilities worldwide which spawned several rat substrains (**Table 1**).

Recent progress with rat genomic sequencing (**Box 2**) has made rat RCCs feasible and more efficient. Several rat substrains (genomic sequencing in progress) exhibit robust, heritable differences in addiction-, stress- and depression related traits. Two

examples, SHR substrains and Wistar Kyoto (WKY)-derived substrains, are discussed below.

Cocaine self-administration in the SHR/NCrI substrain was characterized on several indices of addiction liability[29–33]. SHR/NCrI acquired cocaine self-administration faster, exhibited escalated operant cocaine intake across doses; displayed greater reinforcement and motivation for cocaine, and greater reactivity to cocaine cues in reinstatement of cocaine seeking, compared to inbred WKY/NCrI and outbred Wistar (WIS/CrI) rats. SHR/NCrI also self-administered more heroin[34], d-amphetamine[35], and methylphenidate[36] compared to WKY/NCrI and/or WIS/CrI. Additionally, adolescent SHR/NCrI females consumed more ethanol than Sprague Dawley (SD)/CrI control rats[37]. These behaviors in SHR/NCrI capture distinct hallmarks of increased drug abuse liability. Critically, the SHR/NHsd substrain does not self-administer more drugs of abuse versus WKY/NHsd, WIS/Hsd, and/or SD/Hsd, including d-amphetamine or methylphenidate compared to WKY/NHsd, WIS/Hsd, and/or SD/Hsd controls[38–40]. With regard to nicotine, SHR/NHsd rats self-administered more nicotine via lever presses than WKY/NHsd at a dose of 30 but not 15 $\mu\text{g}/\text{kg}$ [40,41]. Nicotine responses in SHR/NCrI have not been tested. High historical phenotypic diversity and low genetic complexity between SHR/NCrI and SHR/NHsd are ideal for a RCC to map the genetic basis of addiction vulnerability traits.

The WKY rat strain is also a well-established model for depression as its behavior mirrors symptoms of human major depression and anxiety including depressed mood, excessive anxiety, loss of interest or pleasure, disturbed sleep and appetite, and low energy[42–50]. Chronic treatments with antidepressants[51], electroshock administration (model for electroconvulsive therapy)[52] and deep-brain stimulation[53] can all reverse these depression-like behaviors.

The WKY strain was developed as the normotensive control for SHR strains. Louis and Howes[54] demonstrated that the WKY strain was distributed to different vendors and universities between F12 and F17 generations of inbreeding. These rats showed genetic and behavioral differences[55,56], including the forced swim test (FST; a model for antidepressant efficacy in rodents). These results motivated bi-directional breeding in FST immobility[57]. Rats with the highest immobility and lowest climbing scores in the FST were bred, producing the WKY More Immobile (WMI) line. Rats with the lowest immobility and highest climbing scores were bred, producing the WKY Less Immobile

(WLI) line. Rats showing the most extreme FST behavior within each line were selected for breeding, specifically avoiding sibling mating until F5, when sibling mating was initiated. These strains have surpassed 40 generations of inbreeding.

WMIs reliably show greater FST immobility than the WLIs[58]. With the exception of fluoxetine, antidepressant treatment (and an enriched environment in adulthood) alleviates depressive-like behavior of WMIs[57,59]. Behavioral and hormonal responsiveness to acute and chronic stress also differ between substrains[59]. In addition, stress-reactive WMIs showed greater stress-enhanced fear learning and alcohol consumption versus WLIs in a model for post-traumatic stress disorder[60]. Importantly, WMI and WLI differ by only ~4,400 SNPs and ~40 large structural variants based on combined ~100x coverage of WGS on three different sequencing platforms. Most variants are located in noncoding regions but there are some intriguing mutations in exons (e.g. *Pclo*) or splicing sites (e.g., *Rab1a*, *Slc01a2*, *Ryr3*, *Lyg1*, and *Nap111*). Taken together, WMI and WLI substrains can be used as RCCs to evaluate genetic factors mediating susceptibility to depression, stress reactivity, comorbidity between stress reactivity and motivation, learning, depression, anxiety and aging.

Sequenced genomes and pre-existing genotyping strategies accelerate QTG and QTV identification. The increasing availability of whole genome sequences for mouse and rat substrains necessitates efficient and affordable genotyping platforms for new RCCs. Only 200 or so genetic markers are required to conduct an F2 mapping study (spacing every 20 to 40 Mb or 10 to 20 cM). Optimal markers should be chosen based on pilot experiments and flanking DNA sequences. Two genotyping strategies include array-based technologies and targeted DNA sequencing. The miniMUGA DNA microarray was designed by Fernando P.M. de Villena and colleagues at UNC Chapel Hill and is sold commercially by NeoGen Genomics, Inc. (Lincoln, NE USA). This array contains complementary probes targeting between 200 and 400 SNPs for crosses between any two of over 40 inbred mouse substrains originating from 10 different parental strains[61] (**Table 1**). Microarrays can also be custom-designed (e.g., with rat substrains) to suit individual investigator needs.

Genotyping via multiplexed, targeted DNA re-sequencing is a high throughput and cost-effective genotyping strategy[62]. In this approach, specific genomic regions are selected and amplified using region-specific primers and multiplexed PCR followed by next-generation sequencing. Hundreds of markers can be profiled in hundreds of

individuals simultaneously. Primers are designed to amplify each genomic interval containing the marker (SNP or indel). Each marker region from every RCC individual is amplified by PCR, barcoded, and sequenced at sufficient read coverage (at least 100 reads per targeted variant locus) using a next generation sequencing platform[62]. For every marker and each individual, the genotype is determined based on variant calling following read alignment to a reference genome. Commercial options are available (e.g. MonsterPlex from Floodlight Genomics LLC, Knoxville, TN USA).

Once heritable substrain differences in a trait are identified and a genotyping strategy is selected, the RCC is generated by a classic backcross or F2 intercross. Marker genotypes and trait values (e.g., behavior and gene expression) are measured for each RCC individual. Power analysis (e.g. the R package *qtlDesign*[12]) takes into account the estimated trait heritability and the additive effect of a locus in order to determine the sample size required to detect a single QTL of a given effect size and a set power level. The R package *R/qtl* permits inclusion of additive and/or interactive covariates (e.g., Treatment, Sex, Cohort, etc.)[63] to statistically define genomic intervals containing variants that influence trait expression. The strength of linkage across the genome is represented by LOD scores, significance thresholds are generated via permutation analysis, and confidence intervals (e.g., 1.5-LOD or Bayesian credible) define the locus size[3,64]. The simple genetic architecture of RCCs permits rapid identification of large-effect QTGs and QTVs and fine mapping to overcome poor QTL resolution (**Box 3**).

Candidate Variant Validation in a RCC: Necessity and Sufficiency

Validation of candidate QTGs/QTVs in a RCC is straightforward because the two nearly isogenic backgrounds provide the unique opportunity to demonstrate both necessity (via mutation correction[65] and sufficiency of the QTV (via mutation induction) with little risk that epistatic interactions will obscure the results. In contrast, nominating and validating QTVs is more difficult when using populations that emphasize increased genetic complexity[66]. When there are orders of magnitude more variants to sift through in nominating candidates, it is not always clear which genetic background is appropriate to demonstrate causality – this is especially true for the Diversity Outbred (DO) that is composed of eight segregating genetic backgrounds[67]. The potential for epistasis and modifier loci to obfuscate predicted results is a genuine concern and is not reliably predicted based on typical sample sizes that are underpowered to detect

pairwise epistasis. A seminal study exemplifying the power of epistasis showed that the detection, effect size and the directional effect of heterozygous knockout alleles for two GWAS genes (*TCF7L2* and *CACNA1C*) differed across 30 different F1 backgrounds on which the heterozygous mutation was bred[68]. Even in a simpler scenario with a two-strain F2 cross, the potential is real for epistasis to obscure an allelic effect when placed on one of the parental strains (differing in millions of variants). The historical gold standard that approximates proof of QTG causality involves genetic complementation whereby mice heterozygous for a null mutation on one genetic background are crossed to the second background. If the effect of the knockout allele is rescued toward the wild-type **ancestral** level by the alternate strain allele, this demonstrates genetic complementation. A failure to complement as indicated by the retention of the mutant phenotype with the alternate allele is strong evidence that the causal QTG has been identified[69].

In the age of gene editing, one can provide stronger evidence for proof of the causal QTG[70] as well as the causal QTV[65]. A major strength of RCCs is that they provide two nearly isogenic backgrounds with which to test for QTG/QTV causality. On the one hand, necessity can be demonstrated whereby the mutant allele (e.g., **loss-of-function**) is replaced (“corrected”) with the **ancestral** allele (e.g., **regain of function**) on the genetic background that normally harbors the mutation. For example, we identified a single intronic nucleotide deletion in *Gabra2* (gene coding for the alpha 2 subunit of the GABA-A receptor) in the C57BL/6J substrain that caused a decrease in transcript and protein levels (**the quantitative trait exhibiting loss of function**) and was reversed by insertion of the corrected allele (**regain of function**) onto the same genetic background[65]. In a second example, a nonsynonymous missense SNP (proline->threonine) within the trace amine-associated receptor 1 (*Taar1*) of the DBA/2J strain was strongly implicated in higher methamphetamine intake in a subset of mice from the DBA/2J strain generated from 2001-2003 in oral intake of methamphetamine[21]. Replacement of this allele with the **ancestral** allele on the high-selected line demonstrating high methamphetamine intake reduced intake toward wild-type (**ancestral allele**) levels, indicating that this allele was necessary for increased methamphetamine intake[22]. On the other hand, sufficiency can be demonstrated whereby the mutant allele is edited onto the nearly identical genetic background that normally harbors the **ancestral** allele to show that the phenotype associated with the

mutant allele can be induced on the genetic background that does not normally show it. To our knowledge, demonstration of both necessity and sufficiency of a QTV from a RCC has not been reported.

Reduced Complexity Advanced Intercrosses

Despite the advantages of RCCs, F2 intercrosses provide imprecise localization of QTLs and “rapid” fine mapping to resolve QTLs is still quite laborious (**Box 3**). A separate notion to improve QTL resolution in RCCs is the **Reduced Complexity Advanced Intercross (RCAI)** (**Box 4**) which involves continual outcrossing of unrelated individuals starting in F3 offspring and continuing for an infinite number of generations to introduce new recombination events and genetically unique individuals at each generation[71-74] (**Figure 1, Panel D**).

Decreased diversity of **RCAIs**, combined with accumulation of numerous meiotic breakpoints for fine mapping of QTVs permits a nearly “comprehensive” genetic analysis of complex traits, in the sense that the contribution of all segregating variants to a phenotype within a population can be evaluated. The resulting insights will address several conundrums in mammalian genetics, including sources of missing heritability[75,76], percentage of variants that have an impact on complex traits[77,78], whether truly neutral variants exist[79], pleiotropy of QTVs among complex disease-relevant traits[80] and the omnigenic hypothesis[81]. Reduced complexity of the **RCAIs** also means reduced diversity, and so the resource may not answer these current issues in a generally applicable way. Nevertheless, deep phenotyping of the **RCAIs**, including molecular phenotypes and omics level analyses, combined with comprehensive QTV mapping of clinical traits, at the very least offers the prospect of a complete and satisfying evaluation of these issues within a simple, genetically defined segregating population[17], a prospect far beyond the reach of approaches with higher levels of genetic diversity. Another advantage of **RCAIs** relates to the observation that most QTVs are found in *cis*-regulatory regions and can be located at a considerable distance from the corresponding gene with many interposed “silent” variants[82,83], thus hindering QTV identification. QTLs derived from **RCAIs** can quickly zero in on small regions with greater than two orders of magnitude reduced complexity which simplifies QTV/QTL identification. Epistasis contributes significantly to complex traits, but the large number of pair-wise combinations blunts statistical power to detect reliable interactions[84].

Decreased genetic complexity of **RCAIs** makes epistatic analysis more tractable in the correspondingly rarer cases in which it clearly exists.

Concluding Remarks

RCCs offer key advantages over trending gene mapping approaches that employ increased genetic complexity[67], by increasing the speed and strength of evidence of QTG/QTV identification. RCCs can be a double-edged sword as one is limited in the number of genetic factors that can be identified in a single cross. This disadvantage is offset by the rich array of existing rodent inbred substrains and the possibility of purposefully establishing new substrains. Low QTL yield and poor resolution in RCCs are mitigated by genetically simple loci, efficiency of fine mapping, and strength of evidence for causal identification. Ultimately, crosses comprising both decreased and increased genetic diversity offer unique, complementary advantages to complex trait analysis that should be fully pursued, given the emerging number of genome sequences and tools available for both approaches (see Outstanding Questions).

ACKNOWLEDGEMENTS

R01DA039168 (C.D.B.), R01CA22160 (M.I.D. & C.D.B.), U01DA041602 (D.J.S.)

TEXT BOX 1

Origin of isogenic strains and substrains. Two sources of genetic variation underlie genetic drift that enable RCCs for variant mapping. First, residual heterozygosity (RH) describes unfixed, heterozygous genetic loci in a progenitor strain. If founders are separated prior to complete inbreeding (< 20 generations), RH makes a larger contribution to substrain variation; indeed, RH can linger for up to 40 generations of inbreeding[85]. The number of RH variants that become fixed depends the filial (F) generation at which the two populations diverged, the number of founder breeders (more breeder pairs will have more RH loci), the number of heterozygous variants within the segregating RH loci, and the founder breeding scheme. Strict sib-sib mating within founder lineages will rapidly generate multiple new substrains; deliberate outcrossing of offspring derived from a large number of breeder pairs will delay, although not prevent, the inevitable establishment of a single isogenic substrain.

A second source of natural variation is *de novo* mutations. The rate at which mutations are acquired and fixed to homozygosity contributes to the degree of genetic drift. Early calculations of mutation rates in rodents were based on reporter constructs at loci in single mouse lines (not available for rats). Meta-analysis estimated the per generation mutation rate as 38×10^{-9} per single site base pair substitution per generation (200 mutations per diploid genome per generation, assuming a 2.6 billion nucleotide genome[86]). Next-generation sequencing facilitates an unbiased identification of *de novo* mutations and estimation of mutation rates in rodents is an ongoing endeavor. The mutation rate for C57BL/6J following 20 generations of one-to-one sibling mating was estimated as 5.4×10^{-9} or 28 per diploid genome and generation for single nucleotide variants using DNA sequencing [87]. Notably, the mutation rate estimated by sequencing was an order of magnitude less than estimation based on reporter constructs. Leveraging sequence data permitted estimation of the mutation rate for homozygous (line average of 4.25×10^{-9}) and heterozygous (line average 5.45×10^{-9}) single nucleotide variants and the mutation rate of insertions and deletions (indels; 3.1×10^{-9})[87]. Mutation rates for homozygous and heterozygous variants were similar and the strategy of sibling breeding at each generation could have contributed to greater genetic fixation of *de novo* mutations. Ultimately, more DNA sequencing studies are needed to

obtain an unbiased, mechanistic understanding of rodent mutation rates, drift, and the impact on trait variation.

----- END TEXT BOX 1 -----

----- INSERT TEXT BOX 2 -----

TEXT BOX 2

Genomic Tool Development in Rats. Rat genome annotation and genomic tools are rapidly improving[88,89]. Whole genome sequencing (WGS) of additional inbred rat strains and substrains[90] will increase translational relevance and expand the number of complex disease and neurobehavioral traits evaluated with the RCC approach[91]. There is a coordinated effort from several NIH-funded projects (PIs: Chen and Williams, University of Tennessee Health Science Center; Dwinell, Medical College of Wisconsin; Akil and Li, University of Michigan) to sequence 100 inbred rat strains, including two of the rat RI panels (HXB and LEXF). Sequencing substrains is also part of this effort and several substrains such as WLI/Eer, WMI/Eer, LEW/Crl, LEW/SSNHsd, F344/NCrI, F344/DuCrI, and F344/NHsd have already been sequenced. The SHR substrains, including SHRSP (stroke-prone) will be sequenced in the near future using both Illumina short reads and high molecular weight linked-read libraries, which barcodes long DNA molecules (e.g. 50-100 kb) and thus has the advantage of more accurately identifying large structural variants. This sequencing effort also revealed assembly [errors](#) in the current rat reference genome, rn6 ([H.Chen et al., Complex Trait Consortium and Rat Genome, 2019, San Diego, CA USA](#)). A coordinated effort with the Vertebrate Genomes Sequencing project (Sanger) is generating data from one male inbred Brown Norway rat (BN/NHsdMcwi) to construct a new reference genome for the rat.

----- END TEXT BOX 2 -----

-----INSERT TEXT BOX 3-----

TEXT BOX 3

Fine Mapping in RCCs

Because RCC traits exhibit a simple genetic inheritance on a nearly isogenic F2 background[10,11,65], fine mapping (if necessary) can be implemented immediately to overcome the coarse resolution of F2 QTLs. Fine mapping involves backcrossing and the introduction of new recombination events within a QTL interval to narrow down which subregions capture the phenotypic variance and thus, capture the causal QTGs and QTVs. Existing tools for fine-resolution QTL mapping such as advanced intercross lines,

outcrosses (e.g., Diversity Outbred[92] but see Reduced Complexity Outcrosses section below), and interval-specific congenics are used to increase recombination events and improve QTL resolution, sometimes to near-single gene resolution[93–96]. Implementation of these fine mapping tools can take several years as they require several generations of breeding and unique genotyping assays. In contrast, fine mapping of a QTL in a RCC can begin with the very next generation of crossing, owing to the nearly isogenic background and simplified genetic architecture of complex traits. Once a major QTL is identified in a RCC, F2 recombinant mice within the QTL interval are selected for immediate backcrossing and phenotypic screening at each consecutive generation containing new recombination events[3]. Because of the sparse density of informative markers, one limitation of fine mapping in the RCC is the potential to “run out” of markers before obtaining single-gene or, e.g., 1 Mb resolution. In this case, functional molecular analyses (e.g., transcriptome or proteome) can help further narrow the list of causal candidate genes before moving to validation. In other words, QTL mapping and DNA sequence are not always sufficient to pinpoint likely causal QTGs and QTVs. A systems genetic approach that employs *cis*- and *trans*-eQTL analysis (e.g., at the transcript or protein level) as well as transcript covariance analysis is always a welcome addition in inching toward causality.

-----END TEXT BOX 3

-----INSERT TEXT BOX 4-----

TEXT BOX 4

Advantages and Disadvantages of Reduced Complexity Advanced Intercrosses.

Two examples of genetically defined heterogeneous outcross populations include Diversity Outbred (DO) mice originating from eight diverse founder strains and segregating for ~60 million variants[92] and the LG/J x SM/J Advanced Intercross Line (AIL) comprising two founder strains that have been continually outcrossed up to generation G56 at the time of the latest publication[95]. Each individual within these lines is genetically unique and thus, must be genotyped in order to conduct QTL mapping.

The RCAIs are intercross lines produced from two closely related progenitor strains. We suggest that this approach will provide several advantages. First, cost-effective genotyping approaches are available, including exon capture and multiplexed PCR and sequencing[62]. Commercially available RCAIs would save the costs and time needed to

generate, genotype, phenotype, and backcross F2 mice in order to fine map loci (if necessary). In addition, outcrossing can improve mapping resolution to sub-Mb levels, depending on recombination frequency and the presence of markers that distinguish the progenitor strains. Random outcrossing of unrelated individuals in generating and maintaining **RCAIs** will accumulate sufficient meiotic breaks within 10 to 15 generations (depending on the locus) to resolve the majority of individual QTNs [97]. Because of the large number of variants in genetically diverse outcrosses, only ~0.003% of variants are usually genotyped[92,98]. In contrast, the limited number of variants in an **RCAI** means that all variants can be evaluated cost-effectively. Genotyping ~100 animals will adequately interrogate the accumulated breakpoints in the **RCAIs**. **Reduced complexity outcross strains (RCOs) are created by intercrossing animals from several closely related parental stocks. Compared to the RCAIs, the RCOs offer more opportunity for discovery but at the price of added genetic complexity.**

There are some limitations to the **RCAI/RCO** approach. First, sufficient power to detect phenotypic differences may require additional animals, depending on the trait variance and effect sizes. In addition, a lack of markers at narrowed loci can limit QTL resolution of **RCAIs**[3]. As an example, we mapped and narrowed a 30 Mb QTL to 3.7 Mb via fine mapping (**Box 2**) but we were unable to validate additional markers to detect additional recombination events. Some variants may also not be separable because of the presence of intervening recombination “cold spots”, strong selective advantage of linked variants, or transmission ratio distortion[99]. Finally, and perhaps the most challenging limitation, is that the resource has to be created for each pair or pairs of closely related isogenic strains or substrains.

-----END TEXT BOX 4-----

-----**INSERT GLOSSARY BOX**-----

GLOSSARY BOX (500 words max)

Expression QTL: A chromosomal region associated with variance in gene expression. A *cis*-eQTL is located near or within the cognate gene. A *trans*-eQTL is located far away from the position of the cognate gene on the same chromosome or on a different chromosome.

Genetic architecture: All DNA variants that influence trait variation, including the number, **effect size**, mode of inheritance, and their additive or epistatic interactions.

Genetic drift: A change in allele frequency caused by the cumulative fixation of residually heterozygous variants (inbred strains) and spontaneous, *de novo* mutations following prolonged physical separation (vendors, institutes). Generations at earlier stages of inbreeding will have more residual heterozygosity and thus a larger number of variants that become fixed. The greater number of generations separating each population, the greater number of spontaneous mutations that will become fixed.

Inbred strain: An isogenic strain with homozygous alleles at every DNA nucleotide. A strain is considered fully inbred after 20 generations of strict brother/sister mating.

Inbred substrain: Isogenic inbred strains that have arisen via genetic drift following separation from a common lineage, typically at different institutions or breeding facilities. The level of substrain divergence depends on the number of generations of inbreeding that separates the last common ancestor and the number of generations separating each substrain. Substrains are differentiated by abbreviations that indicate their origin from different labs or commercial vendors. For example, the designations J, N, Crl and Tac represent sublimes from The Jackson Laboratory, the NIH, Charles River Laboratories, and Taconic Biosciences, respectively.

Isogenic: Nearly the same or very similar genotypes and genetic backgrounds.

Logarithm of the Odds (LOD): Statistical measure of the probability that a polymorphic genetic marker is physically linked to, and thus co-inherited with one or more causal variants contributing to overall phenotypic variance of a complex trait. A higher LOD score indicates a stronger statistical signal of linkage. A LOD score is akin to a negative logP value and thus, a LOD score of 3 indicates that the odds that the genetic marker and the causal variant(s) are linked are 1000 greater than the odds that they are not.

Narrow-sense heritability: Proportion of the total phenotypic variance attributable to additive genetic factors. Narrow-sense heritability is estimated by calculating the proportion of total variance explained by between-strain (genetic) variance. Within-strain variance (environmental, epigenetic, technical variation) is defined as non-genetic because every individual within an inbred strain is genetically identical.

Quantitative trait locus (QTL): A statistically defined region of the genome for which there is a strong association between genotype and trait variation such that inheritance of one set of parental alleles in a genetic population is associated with higher trait expression.

Quantitative trait gene (QTG): The causal gene underlying a QTL.

Quantitative trait variant (QTV): The causal variant underlying a QTL.

Reduced Complexity Cross (RCC): A forward genetic cross (typically an F2 cross) between individuals from two substrains that contain very low genetic diversity that is used to generate a population of recombinant individuals for QTL mapping.

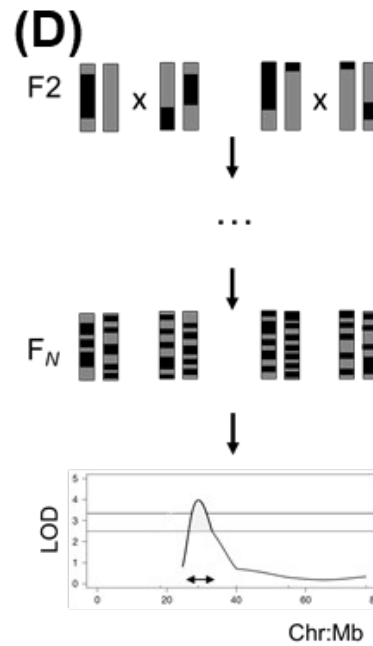
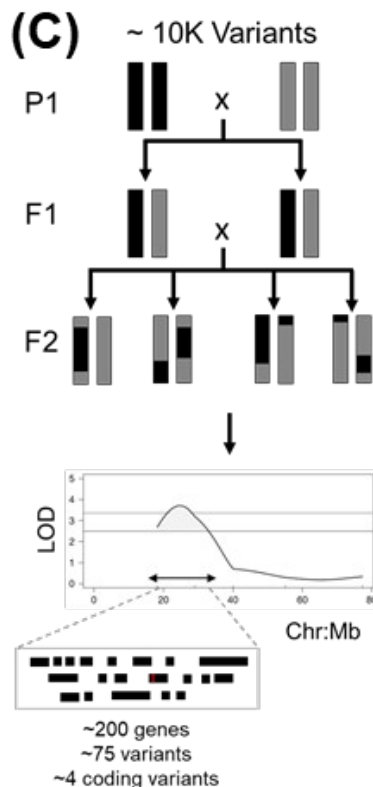
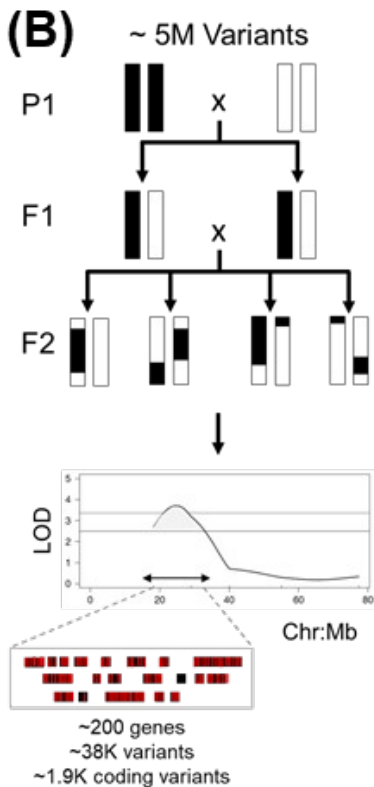
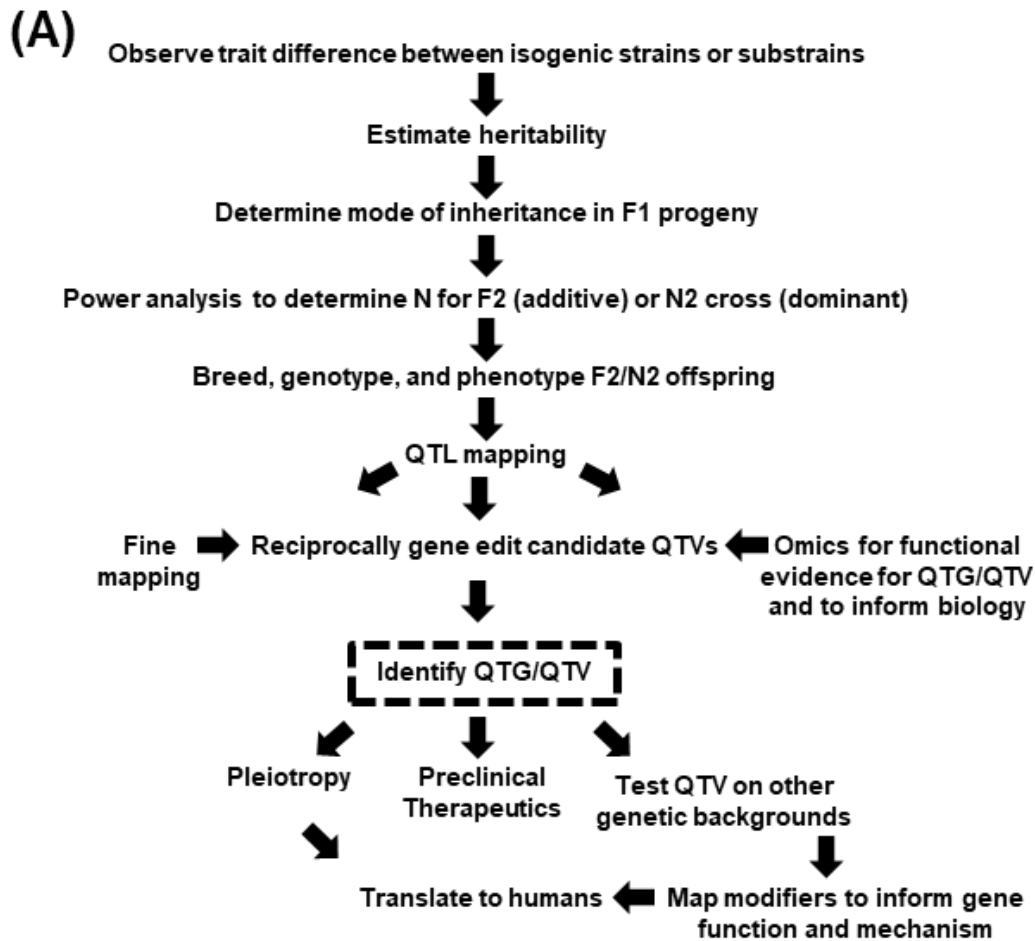
Reduced Complexity Advanced Intercross (RCAI): Animals obtained by intercrossing progeny originating from two closely related strains over multiple generations.

-----END GLOSSARY BOX-----

KEY FIGURE LEGEND

RCCs for Complex Trait Analysis. (A): RCC flow chart. **(B): A typical F2 intercross between two classical inbred strains.** Isogenic F1 offspring are generated by crossing two inbred strains. Every F1 individual possesses one chromatid from each parental strain for each chromosome. F1 offspring are intercrossed to generate recombinant F2 individuals. Classical inbred mouse strains typically segregate approximately 5 million variants. **(C): An F2 intercross with a RCC.** RCCs are generated by intercrossing isogenic strains or substrains whose genomes are very similar and thus segregate orders of magnitude reduced number of variants. As an example, a RCC between C57BL/6 substrains segregates between 10K and 20K variants (SNPs plus indels), or in other words, 250K to 500K-fold fewer variants than a classical F2 cross. Even though the number of historical recombination events and the QTL resolution in an F2 cross are low (~40 Mb), the number of candidate causal variants underlying each locus is much smaller. For panels A and B, the number of genes and variants within each QTL interval was determined based on a mouse genome size of 2.64B bases and gene model that included 26K genes and assumes a random distribution model of genes and variants across the genome. **(D): A Reduced Complexity Outcross (RCO).** The RCO addresses the low resolution of an F2 cross by increasing the number of recombination events which yields a narrower QTL interval and eliminates the need for fine mapping. The required number of generations for intercrossing to provide sufficient QTG/QTV resolution increases as genetic complexity increases.

KEY FIGURE



COVER FIGURE LEGEND

Inspiration for the cover art comes from Andy Warhol, who transformed ordinary and underappreciated objects into new and exciting art forms. In our review we also seek to transform and elevate the status of underappreciated isogenic strains and substrains into a novel tool for rapid gene discovery and identification of functional gene variants. In this approach isogenic rodent strains with phenotypic differences but highly similar genetic backgrounds (represented by recoloring the same image) are used to generate reduced complexity crosses (RCCs) for genetic mapping. Candidate genomic intervals from the RCC contain orders of magnitude fewer variants and facilitate identification of functional gene variants that modulate trait variation. Art designed by Kelley E. Carter.



Table 1. Exemplary mouse and rat substrains and phenotypes that can be subjected to RCC analysis.

Mouse progenitor strains	Sequenced Mouse Substrains (on miniMUGA array)	Behavioral differences	Physiological, disease model differences	Cellular differences	Molecular differences
A	A/J, A/JOlaHsd		Muscle dysfunction [T1]		
BALB/c	BALB/cJ, BALB/cByJ	Aggression[T2], alcohol preference[T3], anxiety-like behavior [T4], cognitive flexibility [T5], inhibitory control[T6], epilepsy and neuronal anatomical abnormalities[28], [T7]	Allergic orchitis and encephalomyelitis [T8,T9], immune response to infection[T10], Grave's hyperthyroidism[T11], experimental arthritis and spondylitis[T12], GABA transmission and anterior cingulate volume[T13,T14], cardiac calcinosis[T15], dexamethasone-induced osteonecrosis[T16], diet-induced fatty liver[T17], streptozotocin-induced diabetes[T18]	Sperm abnormalities [T19], antibody-mediated immunity[T20], hepatocyte invasion following infection[T21], virus-induced demyelination [T22]	Copy number variants[T23], amino acid and monoamine neurotransmitter content in caudate[T24]
C3H	C3H/HeJ, C3H/HeNcrl, C3H/HeNrj, C3H/HeH, C3H/HeNHsd, C3H/HeNTac	Nest building[T25], paw preference[T26]	Skeletal[T25], immune reactivity[T27], LPS responsiveness[T28], experimental leprosy[T29], spontaneous colitis[T30], experimental arthritis and spondylitis[T31], absence seizures[T32]	Cytotoxic activity of lymphocytes in cancer model[T33],	Toll-like receptor 4[T34], Gpr179[T35]
C57BL/6	C57BL/6NJ, C57BL/6Ncrl, C57BL/6J Bom Tac, C57BL/6ByJ, C57BL/6J Ola Hsd,	Several. Reviewed by [5]. See also [6], [T36], and main	Several. Stroke[25], metabolic traits[T38], immune response[T39]. See also[6], kidney stones[T40], severity of Dravet	Several[6], cardiac fibrogenic response to angiotensin[T53], acetaminophe	<i>Gabra2</i> [65], <i>Cyfp2</i> [10,11], <i>Crb1</i> [T56], <i>Nlrp12</i> [T57]

	C57BL/6N-Tyr<c>/BrdCrCrI, C57BL/6NJRj	text, corticosterone-induced depressive-like behaviors[T37],	syndrome model with Scn1a +/- [T41], circadian disruptive effects on behavior[T42], ocular lesions[T43], liver production of reactive oxygen species[T44], pain[5,24], viral-induced inflammation[T45], hindlimb unloading-induced bone loss[T46], inflammation-induced neutrophil recruitment[T47], high fat diet-induced obesity[T48], and metabolic and skeletal dysfunction[T49], impaired glucose secretion[T50], auditory physiology and pathology[T51], blood pressure[T52]	n-induced hepatotoxicity [T54], hypoxic-ischemic brain injury[T55]	
DBA/1	DBA/1Lacj, DBA/1OlaHsd		Giant lysosomes in the kidney proximal tubules[T58], collagen-induced arthritis[T59]		C5[T60]
DBA/2		Methamphetamine intake[21], acoustic startle [T61,T62]	Viral infection susceptibility[T63]		Klrd1 (CD94) [T64], Taar1[21]
FVB	FVB/Nj, FVB/NCrI, FVB/NRj, FVB/NHsd, FVB/NTac		Breast cancer[T65], pituitary abnormalities[T66], T-cell dysfunction and cutaneous pathology[T67]		
NOD	NOD/ShiLtj, NOD/MrkTac		Cataracts[T68], diabetes resistance[T69]		Structural variants in chromosome3

					and Icam2 (chromosome 11)[T70]
129	129Ps/OlaHsd, 129S1/SvImj, 129S2/SvHsd, 129S2/SvPas OrIRj, 129S5/SvEvBrd, 129T2/SvEmj, 129X1/Svj	Opioid addiction-related behaviors [T71, T72], fear conditioning [T73, T74], anxiety-like behavior [T74, T75, T76], habituation [T74], reversal learning [T77], spatial learning/memory [T77], forced swim test [T76], m, k, cocaine motivation [T78]		Inhibition of NaCl response in chorda tympani [T79]	Disc1 deletion [T80]
Rat progenitor strains	Sequenced Rat Substrains	Behavioral differences	Physiological differences	Cellular differences	Molecular differences
WKY	WKY/NCrl vs WKY/NHsd	Attention [T81, T82], anxiety-like behavior [T83, social interaction [T83]			Tyrosine hydroxylase, dopamine transporter [T84], hippocampal gene expression [T85]
SHR	SHRSP vs SHRSP5/Dmcr			progression of fibrosis induced by	

				high fat diet[T86]	
SHR	SHR vs SHRSP	cerebral stroke[T87]			
WKY	WLI/Eer	Open field[T88], FST[T89], stress-enhanced fear conditioning and alcohol consumption[60], response to chronic stress[59], Premature memory decline[T90]	Resting state functional connectivity[T91], baseline and stress corticosterone levels[T92]		Blood transcriptome[T92], amygdala transcriptome[T89], hippocampal transcriptome[T89,T93]
WKY SS	WMI/Eer SS/Jr vs SS/JrHsdMcwi vs SR/Jr	Open field[T88], FST[T89], stress-enhanced fear conditioning[60], alcohol consumption[60], response to chronic stress [59], premature memory decline[T90]	Baseline and stress corticosterone levels[60], blood pressure[T94]		Blood transcriptome[100], hippocampal transcriptome [T89,T93], and amygdala transcriptome[T89]
F344	F344/NHsd vs		Body weight gain, neuropeptide Y and		

	F344/NCrHsd		agouti-related protein[T95]		
--	-------------	--	-----------------------------	--	--

REFERENCES

- 1 Baud, A. and Flint, J. (2017) Identifying genes for neurobehavioural traits in rodents: progress and pitfalls. *Dis.Model.Mech.* 10, 373–383
- 2 Bryant, C.D. (2011) The blessings and curses of C57BL/6 substrains in mouse genetic studies. *Ann.N.Y.Acad.Sci.* 1245, 31–33
- 3 Bryant, C.D. *et al.* (2018) Reduced complexity cross design for behavioral genetics. In *Molecular-Genetic and Statistical Techniques for Behavioral and Neural Research Book*, Section vols. (Gerlai, R. T., ed), pp. 165–190
- 4 Rosen, G.D. *et al.* (2013) Bilateral subcortical heterotopia with partial callosal agenesis in a mouse mutant. *Cereb. Cortex* 23, 859–872
- 5 Bryant, C.D. *et al.* (2008) Behavioral differences among C57BL/6 substrains: implications for transgenic and knockout studies. *J.Neurogenet.* 22, 315–331
- 6 Simon, M.M. *et al.* (2013) A comparative phenotypic and genomic analysis of C57BL/6J and C57BL/6N mouse strains. *Genome Biol.* 14, R82
- 7 Ashbrook, D.G. *et al.* (2018) Post-genomic behavioral genetics: From revolution to routine. *Genes Brain Behav.* 17, e12441
- 8 Keane, T.M. *et al.* (2011) Mouse genomic variation and its effect on phenotypes and gene regulation. *Nature* 477, 289–294
- 9 Yalcin, B. *et al.* (2011) Sequence-based characterization of structural variation in the mouse genome. *Nature* 477, 326–329
- 10 Kumar, V. *et al.* (2013) C57BL/6N mutation in Cytoplasmic FMRP interacting protein 2 regulates cocaine response. *Science* 342, 1508–1512
- 11 Kirkpatrick, S.L. *et al.* (2017) Cytoplasmic FMR1-Interacting Protein 2 Is a Major Genetic Factor Underlying Binge Eating. *Biol.Psychiatry* 81, 757–769
- 12 Sen, S. *et al.* (2007) R/qtlDesign: inbred line cross experimental design. *Mamm.Genome* 18, 87–93
- 13 Lander, E. and Kruglyak, L. (1995) Genetic dissection of complex traits: guidelines for interpreting and reporting linkage results. *Nature genetics* 11, 241–7
- 14 Broman, K.W. and Sen, S. (2009) *A Guide to QTL Mapping with R/qtl*, (1st edn) Springer-Verlag, Inc.
- 15 Bull, K.R. *et al.* (2013) Unlocking the bottleneck in forward genetics using whole-genome sequencing and identity by descent to isolate causative mutations. *PLoS Genet.* 9, e1003219
- 16 Miyoshi, C. *et al.* (2019) Methodology and theoretical basis of forward genetic screening for sleep/wakefulness in mice. *Proc. Natl. Acad. Sci. U.S.A.* 116, 16062–16067
- 17 Bryant, C.D. *et al.* (2018) *Reduced complexity cross design for behavioral genetics*, Molecular-Genetic and Statistical Techniques for Behavioral and Neural Research Academic Press, London, United Kingdom.
- 18 Mulligan, M.K. *et al.* (2008) Alcohol trait and transcriptional genomic analysis of C57BL/6 substrains. *Genes Brain Behav.* 7, 677–689
- 19 Kirkpatrick, S.L. and Bryant, C.D. (2015) Behavioral architecture of opioid reward and aversion in C57BL/6 substrains. *Front.Behav.Neurosci.* 8, 450
- 20 Akinola, L.S. *et al.* (2019) C57BL/6 Substrain Differences in Pharmacological Effects after Acute and Repeated Nicotine Administration. *Brain Sci* 9,
- 21 Reed, C. *et al.* (2017) A Spontaneous Mutation in Taar1 Impacts Methamphetamine-Related Traits Exclusively in DBA/2 Mice from a Single Vendor. *Front Pharmacol* 8, 993
- 22 Stafford, A.M. *et al.* (2019) Taar1 gene variants have a causal role in methamphetamine intake and response and interact with Oprm1. *Elife* 8,
- 23 Shi, X. *et al.* (2016) Genetic Polymorphisms Affect Mouse and Human Trace Amine-Associated Receptor 1 Function. *PLoS ONE* 11, e0152581
- 24 Bryant, C.D. *et al.* (2019) C57BL/6 substrain differences in inflammatory and neuropathic nociception and genetic mapping of a major quantitative trait locus underlying acute thermal nociception. *Mol Pain* DOI: 10.1177/1744806918825046

- 25 Nowak, T.S. and Mulligan, M.K. (2019) Impact of C57BL/6 substrain on sex-dependent differences in mouse stroke models. *Neurochem. Int.* 127, 12–21
- 26 Zhao, L. *et al.* (2019) Substrain- and sex-dependent differences in stroke vulnerability in C57BL/6 mice. *J. Cereb. Blood Flow Metab.* 39, 426–438
- 27 Corty, R.W. *et al.* (2018) Mean-Variance QTL Mapping Identifies Novel QTL for Circadian Activity and Exploratory Behavior in Mice. *G3 (Bethesda)* 8, 3783–3790
- 28 Wahlsten, D. (1989) Deficiency of the corpus callosum: incomplete penetrance and substrain differentiation in BALB/c mice. *J. Neurogenet.* 5, 61–76
- 29 Harvey, R.C. *et al.* (2011) Methylphenidate treatment in adolescent rats with an attention deficit/hyperactivity disorder phenotype: cocaine addiction vulnerability and dopamine transporter function. *Neuropsychopharmacology* 36, 837–847
- 30 Somkuwar, S.S. *et al.* (2013) Adolescent atomoxetine treatment in a rodent model of ADHD: effects on cocaine self-administration and dopamine transporters in frontostriatal regions. *Neuropsychopharmacology* 38, 2588–2597
- 31 Jordan, C.J. *et al.* (2014) Cocaine-seeking behavior in a genetic model of attention-deficit/hyperactivity disorder following adolescent methylphenidate or atomoxetine treatments. *Drug Alcohol Depend* 140, 25–32
- 32 Jordan, C.J. *et al.* (2016) Adolescent d-amphetamine treatment in a rodent model of attention deficit/hyperactivity disorder: impact on cocaine abuse vulnerability in adulthood. *Psychopharmacology (Berl.)* 233, 3891–3903
- 33 Jordan, C.J. *et al.* (2016) Adolescent D-amphetamine treatment in a rodent model of ADHD: Pro-cognitive effects in adolescence without an impact on cocaine cue reactivity in adulthood. *Behav. Brain Res.* 297, 165–179
- 34 Miller, M.L. *et al.* (2018) Ventral striatal regulation of CREM mediates impulsive action and drug addiction vulnerability. *Mol. Psychiatry* 23, 1328–1335
- 35 dela Peña, I. *et al.* (2015) Gene expression profiling in the striatum of amphetamine-treated spontaneously hypertensive rats which showed amphetamine conditioned place preference and self-administration. *Arch. Pharm. Res.* 38, 865–875
- 36 dela Peña, I.C. *et al.* (2011) Methylphenidate self-administration and conditioned place preference in an animal model of attention-deficit hyperactivity disorder: the spontaneously hypertensive rat. *Behav Pharmacol* 22, 31–39
- 37 Berger, D.F. *et al.* (2010) The effects of strain and prenatal nicotine exposure on ethanol consumption by adolescent male and female rats. *Behav. Brain Res.* 210, 147–154
- 38 Meyer, A.C. *et al.* (2010) Genetics of novelty seeking, amphetamine self-administration and reinstatement using inbred rats. *Genes Brain Behav.* 9, 790–798
- 39 Marusich, J.A. *et al.* (2011) Strain differences in self-administration of methylphenidate and sucrose pellets in a rat model of attention-deficit hyperactivity disorder. *Behav Pharmacol* 22, 794–804
- 40 Han, W. *et al.* (2017) Social learning promotes nicotine self-administration by facilitating the extinction of conditioned aversion in isogenic strains of rats. *Sci Rep* 7, 8052
- 41 Chen, H. *et al.* (2012) Genetic factors control nicotine self-administration in isogenic adolescent rat strains. *PLoS ONE* 7, e44234
- 42 Baum, A.E. *et al.* (2006) Test- and behavior-specific genetic factors affect WKY hypoactivity in tests of emotionality. *Behav. Brain Res.* 169, 220–230
- 43 Dugovic, C. *et al.* (2000) Sleep in the Wistar-Kyoto rat, a putative genetic animal model for depression. *Neuroreport* 11, 627–631
- 44 Malkesman, O. *et al.* (2005) Reward and anxiety in genetic animal models of childhood depression. *Behav. Brain Res.* 164, 1–10
- 45 Paré, W.P. (1994) Open field, learned helplessness, conditioned defensive burying, and forced-swim tests in WKY rats. *Physiol. Behav.* 55, 433–439
- 46 Paré, W.P. (1994) Hyponeophagia in Wistar Kyoto (WKY) rats. *Physiol. Behav.* 55, 975–978
- 47 Paré, W.P. and Redei, E. (1993) Depressive behavior and stress ulcer in Wistar Kyoto rats. *J. Physiol. Paris* 87, 229–238

- 48 Redei, E.E. *et al.* (2001) Paradoxical hormonal and behavioral responses to hypothyroid and hyperthyroid states in the Wistar-Kyoto rat. *Neuropsychopharmacology* 24, 632–639
- 49 Solberg, L.C. *et al.* (2004) Sex- and lineage-specific inheritance of depression-like behavior in the rat. *Mamm. Genome* 15, 648–662
- 50 Solberg, L.C. *et al.* (2001) Altered hormone levels and circadian rhythm of activity in the WKY rat, a putative animal model of depression. *Am. J. Physiol. Regul. Integr. Comp. Physiol.* 281, R786–794
- 51 Jeannotte, A.M. *et al.* Desipramine Modulation of α -, γ -Synuclein, and the Norepinephrine Transporter in an Animal Model of Depression.
- 52 Kyeremanteng, C. *et al.* (2012) A Study of Brain and Serum Brain-Derived Neurotrophic Factor Protein in Wistar and Wistar-Kyoto Rat Strains after Electroconvulsive Stimulus. *Pharmacopsychiatry* 45, 244–249
- 53 Falowski, S.M. *et al.* (2011) An evaluation of neuroplasticity and behavior after deep brain stimulation of the nucleus accumbens in an animal model of depression. *Neurosurgery* 69, 1281–1290
- 54 Louis, W.J. and Howes, L.G. (1990) Genealogy of the spontaneously hypertensive rat and Wistar-Kyoto rat strains: implications for studies of inherited hypertension. *J. Cardiovasc. Pharmacol.* 16 Suppl 7, S1–5
- 55 Kurtz, T.W. *et al.* (1989) Molecular evidence of genetic heterogeneity in Wistar-Kyoto rats: implications for research with the spontaneously hypertensive rat. *Hypertension* 13, 188–192
- 56 Paré, W.P. and Kluczynski, J. (1997) Differences in the stress response of Wistar-Kyoto (WKY) rats from different vendors. *Physiol. Behav.* 62, 643–648
- 57 Will, C.C. *et al.* (2003) Selectively bred Wistar-Kyoto rats: an animal model of depression and hyper-responsiveness to antidepressants. *Mol. Psychiatry* 8, 925–932
- 58 Andrus, B.M. *et al.* (2012) Gene expression patterns in the hippocampus and amygdala of endogenous depression and chronic stress models. *Mol. Psychiatry* 17, 49–61
- 59 Mehta-Raghavan, N.S. *et al.* (2016) Nature and nurture: environmental influences on a genetic rat model of depression. *Transl Psychiatry* 6, e770
- 60 Lim, P.H. *et al.* (2018) Genetic Model to Study the Co-Morbid Phenotypes of Increased Alcohol Intake and Prior Stress-Induced Enhanced Fear Memory. *Front Genet* 9, 566
- 61 Shorter, J.R. *et al.* (2019) Whole Genome Sequencing and Progress Toward Full Inbreeding of the Mouse Collaborative Cross Population. *G3 (Bethesda)* 9, 1303–1311
- 62 Wingo, T.S. *et al.* (2017) MPD: multiplex primer design for next-generation targeted sequencing. *BMC Bioinformatics* 18, 14
- 63 Broman, K.W. *et al.* (2003) R/qtl: QTL mapping in experimental crosses. *Bioinformatics (Oxford, England)* 19, 889–90
- 64 Mott, R. and Flint, J. (2013) Dissecting quantitative traits in mice. *Annu.Rev.Genomics Hum.Genet.* 14, 421–439
- 65 Mulligan, M.K. *et al.* (2019) Identification of a functional non-coding variant in the GABAA receptor α 2 subunit of the C57BL/6J mouse reference genome: Major implications for neuroscience research. *Frontiers in Genetics* DOI: 10.3389/fgene.2019.00188
- 66 Czechanski, A. *et al.* (2014) Derivation and characterization of mouse embryonic stem cells from permissive and nonpermissive strains. *Nat Protoc* 9, 559–574
- 67 Saul, M.C. *et al.* (2019) High-Diversity Mouse Populations for Complex Traits. *Trends Genet.* 35, 501–514
- 68 Sittig, L.J. *et al.* (2016) Genetic Background Limits Generalizability of Genotype-Phenotype Relationships. *Neuron* 91, 1253–1259
- 69 Yalcin, B. *et al.* (2004) Genetic dissection of a behavioral quantitative trait locus shows that *Rgs2* modulates anxiety in mice. *Nat.Genet.* 36, 1197–1202
- 70 Turner, T.L. (2014) Fine-mapping natural alleles: quantitative complementation to the rescue. *Mol.Ecol.* 23, 2377–2382
- 71 Gonzales, N.M. and Palmer, A.A. (2014) Fine-mapping QTLs in advanced intercross lines and other outbred populations. *Mamm Genome* 25, 271–92

- 72 Chesler, E.J. (2014) Out of the bottleneck: the Diversity Outcross and Collaborative Cross mouse populations in behavioral genetics research. *Mamm Genome* 25, 3–11
- 73 Mott, R. and Flint, J. (2002) Simultaneous detection and fine mapping of quantitative trait loci in mice using heterogeneous stocks. *Genetics* 160, 1609–18
- 74 Solberg Woods, L.C. and Palmer, A.A. (2019) Using Heterogeneous Stocks for Fine-Mapping Genetically Complex Traits. In *Rat Genomics 2018* (Hayman, G. T. et al., eds), pp. 233–247, Springer New York
- 75 Génin, E. (2019) Missing heritability of complex diseases: case solved? *Hum Genet* DOI: 10.1007/s00439-019-02034-4
- 76 Young, A.I. (2019) Solving the missing heritability problem. *PLoS Genet* 15, e1008222
- 77 Sohail, M. et al. (2019) Polygenic adaptation on height is overestimated due to uncorrected stratification in genome-wide association studies. *Elife* 8,
- 78 Yengo, L. et al. (2018) Meta-analysis of genome-wide association studies for height and body mass index in ~700000 individuals of European ancestry. *Hum Mol Genet* 27, 3641–3649
- 79 Pouyet, F. et al. (2018) Background selection and biased gene conversion affect more than 95% of the human genome and bias demographic inferences. *eLife* 7, e36317
- 80 Watanabe, K. et al. (2019) A global overview of pleiotropy and genetic architecture in complex traits. *Nat Genet* 51, 1339–1348
- 81 Boyle, E.A. et al. (2017) An Expanded View of Complex Traits: From Polygenic to Omnigenic. *Cell* 169, 1177–1186
- 82 Gallagher, M.D. and Chen-Plotkin, A.S. (2018) The Post-GWAS Era: From Association to Function. *Am J Hum Genet* 102, 717–730
- 83 Visscher, P.M. et al. (2017) 10 Years of GWAS Discovery: Biology, Function, and Translation. *Am J Hum Genet* 101, 5–22
- 84 Ritchie, M.D. and Van Steen, K. (2018) The search for gene-gene interactions in genome-wide association studies: challenges in abundance of methods, practical considerations, and biological interpretation. *Ann Transl Med* 6, 157
- 85 Taft, R.A. et al. (2006) Know thy mouse. *Trends Genet.* 22, 649–653
- 86 Lynch, M. (2010) Evolution of the mutation rate. *Trends Genet.* 26, 345–352
- 87 Uchimura, A. et al. (2015) Germline mutation rates and the long-term phenotypic effects of mutation accumulation in wild-type laboratory mice and mutator mice. *Genome Res.* 25, 1125–1134
- 88 Tutaj, M. et al. (2019) Rat Genome Assemblies, Annotation, and Variant Repository. *Methods Mol. Biol.* 2018, 43–70
- 89 Laulederkind, S.J.F. et al. (2019) Rat Genome Databases, Repositories, and Tools. *Methods Mol. Biol.* 2018, 71–96
- 90 Hermsen, R. et al. (2015) Genomic landscape of rat strain and substrain variation. *BMC Genomics* 16, 357
- 91 Parker, C.C. et al. (2014) Rats are the smart choice: Rationale for a renewed focus on rats in behavioral genetics. *Neuropharmacology* 76 Pt B, 250–258
- 92 Saul, M.C. et al. (2019) High-Diversity Mouse Populations for Complex Traits. *Trends Genet* 35, 501–514
- 93 Yazdani, N. et al. (2015) Hnrnph1 Is A Quantitative Trait Gene for Methamphetamine Sensitivity. *PLoS Genet.* 11, e1005713
- 94 Cheng, R. et al. (2010) Genome-wide association studies and the problem of relatedness among advanced intercross lines and other highly recombinant populations. *Genetics* 185, 1033–1044
- 95 Gonzales, N.M. et al. (2018) Genome wide association analysis in a mouse advanced intercross line. *Nat Commun* 9, 5162
- 96 Shirley, R.L. et al. (2004) Mpdz is a quantitative trait gene for drug withdrawal seizures. *Nature neuroscience* 7, 699–700
- 97 Darvasi, A. and Soller, M. (1995) Advanced intercross lines, an experimental population for fine genetic mapping. *Genetics* 141, 1199–1207

- 98 Svenson, K.L. *et al.* (2012) High-resolution genetic mapping using the mouse diversity outbred population. *Genetics* 190, 437–47
- 99 Chesler, E.J. *et al.* (2016) Diversity Outbred Mice at 21: Maintaining Allelic Variation in the Face of Selection. *G3 (Bethesda)* 6, 3893–3902
- 100 Pajer, K. *et al.* (2012) Discovery of blood transcriptomic markers for depression in animal models and pilot validation in subjects with early-onset major depression. *Transl Psychiatry* 2, e101