

UCLA

UCLA Previously Published Works

Title

ALDH1 expression predicts progression of premalignant lesions to cancer in Type I endometrial carcinomas

Permalink

<https://escholarship.org/uc/item/8cr4n65d>

Journal

Scientific Reports, 11(1)

ISSN

2045-2322

Authors

Mah, Vei

Elshimali, Yahya

Chu, Alison

et al.

Publication Date

2021

DOI

10.1038/s41598-021-90570-3

Copyright Information

This work is made available under the terms of a Creative Commons Attribution License, available at <https://creativecommons.org/licenses/by/4.0/>

Peer reviewed



OPEN

ALDH1 expression predicts progression of premalignant lesions to cancer in Type I endometrial carcinomas

Vei Mah¹, Yahya Elshimali³, Alison Chu², Neda A. Moatamed¹, Jamar P. Uzzell¹, Jessica Tsui¹, Stephen Schettler¹, Hania Shakeri¹ & Madhuri Wadehra^{1,3,4}✉

In type 1 endometrial cancer, unopposed estrogen stimulation is thought to lead to endometrial hyperplasia which precedes malignant progression. Recent data from our group and others suggest that ALDH activity mediates stemness in endometrial cancer, but while aldehyde dehydrogenase 1 (ALDH1) has been suggested as a putative cancer stem cell marker in several cancer types, its clinical and prognostic value in endometrial cancer remains debated. The aim of this study was to investigate the clinical value of ALDH1 expression in endometrial hyperplasia and to determine its ability to predict progression to endometrial cancer. Interrogation of the TCGA database revealed upregulation of several isoforms in endometrial cancer, of which the ALDH1 isoforms collectively constituted the largest group. To translate its expression, a tissue microarray was previously constructed which contained a wide sampling of benign and malignant endometrial samples. The array contained a metachronous cohort of samples from individuals who either developed or did not develop endometrial cancer. Immunohistochemical staining was used to determine the intensity and frequency of ALDH1 expression. While benign proliferative and secretory endometrium showed very low levels of ALDH1, slightly higher expression was observed within the stratum basalis. In disease progression, cytoplasmic ALDH1 expression showed a step-wise increase between endometrial hyperplasia, atypical hyperplasia, and endometrial cancer. ALDH1 was also shown to be an early predictor of EC development, suggesting that it can serve as an independent prognostic indicator of patients with endometrial hyperplasia with or without atypia who would progress to cancer ($p = 0.012$).

Endometrial carcinoma is the fourth most common cancer in women in the United States, and the most common gynecologic cancer in developed nations¹. These carcinomas have been broadly classified into two types: Type 1 (endometrioid and mucinous carcinoma), which encompasses the large majority of endometrial cancers (~80%), and Type 2, which includes less common serous, clear cell, undifferentiated carcinoma and carcinosarcoma-types. Type 1 endometrial cancer is associated with long term unopposed estrogen stimulation, which is thought to contribute to endometrial hyperplasia, while type 2 is generally considered to be estrogen independent.

Endometrial hyperplasia is a pathologic condition defined as hyperplastic changes that occur in the endometrial glandular epithelium resulting in increased glandular proliferation in different shapes and irregular sizes, with an associated increase in gland to stroma ratio. While less than 2% of endometrial hyperplasia cases without cytological atypia progress to endometrial cancer, hyperplasia accompanied by atypia presents a significant clinical concern as it serves as a precursor to endometrial cancer². In these cases, ~20–25% of patients will progress to malignancy, while in others, endometrial hyperplasia may regress without incident or detection³. Therefore, there is a need for better and more accurate biomarkers to diagnose and predict which precancerous lesions of the endometrium to treat.

Endometrial cancers consist of heterogenous cell populations that may derive from a single clone. The cellular heterogeneity is thought to occur from different somatic mutations and/or result from a renewable small

¹4525 MacDonald Research Laboratories, Department of Pathology and Laboratory Medicine, David Geffen School of Medicine at UCLA, Los Angeles, CA 90095, USA. ²Department of Pediatrics, David Geffen School of Medicine at UCLA, Los Angeles, USA. ³Division of Cancer Research and Training, Department of Medicine, Charles R. Drew University of Medicine and Science, Los Angeles, USA. ⁴Jonsson Comprehensive Cancer Center, David Geffen School of Medicine at UCLA, Los Angeles, USA. ✉email: mwadehra@mednet.ucla.edu

subpopulation of cells, referred to as cancer stem cells (CSC), that have the capability of transforming from an epithelial to a mesenchymal phenotype⁴. Aldehyde dehydrogenase 1 (ALDH1) has been identified as a putative CSC marker in several cancer types⁵ and is expressed in endometrial cancer^{6,7}. While the body of evidence for ALDH1 expression having clinicopathological and prognostic value in a number of cancers grows, including colorectal cancer^{8,9}, bladder and prostate cancer^{10,11}, and breast cancer^{12,13}, less is known about its ability to predict the progression of pre-cancerous lesions to cancer.

Therefore, the aim of this study is to investigate the clinical utility of ALDH1 expression in pre-cancerous endometrial lesions. We test the hypothesis that ALDH1 expression can predict progression of pre-cancerous endometrial lesions to cancer.

Materials and methods

TCGA analysis. The expression of all 17 ALDH isoforms was analyzed through the CBioPortal for Cancer Genomics (<http://cbioportal.org>)¹⁴. 526 cases of uterus corpus endometrial carcinoma (PanCancer Atlas) were evaluated for EMP2 expression (mRNA expression z-scores relative to diploid samples). Data is summarized as an OncoPrint for multiple genes across a set of tumor samples (columns)¹⁴ as well as survival data dividing groups into altered versus unaltered mRNA.

Cell culture. HEC1A and HEC1B cells (ATCC, Manassas, VA, USA) were cultured in McCoys or DMEM media supplemented with 10% fetal bovine serum, 1% L-glutamine, 1% sodium pyruvate and 1% penicillin-streptomycin at 37 °C in a humidified 5% CO₂. Experiments were performed on cell lines within 3 months after resuscitation of frozen aliquots and were authenticated based on viability, recovery, growth, and morphology. Cell lines were tested monthly for mycoplasma (Lonza, Walkersville, MD, USA).

Flow sort and cell proliferation. Semi-confluent cells were harvested using a 0.5% EDTA solution in HBSS. ALDH^{high} and ALDH^{low} subsets were isolated using an ARIA III flow cytometric machine (BD Biosciences) using the ALDEFLUOR assay kit (StemCell Technologies, Vancouver, BC) according to the manufacturer's guidelines. Briefly, 1×10^6 cells were incubated in ALDEFLUOR assay buffer containing ALDH substrate or under identical conditions with 50 mmol/L of diethylaminobenzaldehyde, an ALDH inhibitor, as a negative control.

In order to compare the rate of proliferation between ALDH^{high} versus ALDH^{low} cells, measurements were made according to manufacturer's instructions. Briefly, plates were removed from the incubator and allowed to equilibrate at room temperature for 20 min, and equal volume of CellTiter-Glo Luminescent Cell Viability Assay reagent was added directly to the wells. Plates were incubated at room temperature for 30 min on a shaker and luminescence was measured on an Envision reader (PerkinElmer; 570 nm).

Tissue micro-array construction. Tissue microarrays (TMA) were constructed as previously described to represent endometrial cancer progression¹⁵. Archival formalin-fixed, paraffin embedded endometrial tissue samples were obtained with UCLA Institutional Review Board (IRB) approval from the David Geffen School of Medicine at UCLA, and the studies conducted in the laboratory were performed under approved guidelines. The IRB waived the need for informed consent as this was a retrospective analysis using de-identified samples. The study cohort consisted of 226 randomly selected patients who underwent endometrial sampling through a variety of biopsy, curettage or resection procedures from 1982 to 2002. Each histologic sample was represented by at least three 1 mm cores that were taken from donor paraffin embedded tissue blocks.

Of the 226 patients, 207 individuals had multiple samples representing those who did or did not develop endometrial cancer over the 20 year time period ("metachronous"). The array contained 1879 cores representing the following histologies: (1) benign endometrium (n = 231); (2) simple hyperplasia and complex hyperplasia (n = 141); (3) simple and complex atypical hyperplasia (n = 54); and (4) primary endometrial adenocarcinoma (n = 109). Atrophic, weakly proliferative, proliferative, secretory, disordered proliferative, progesterational effects due to hormone therapy, and polypoid endometrium were all grouped as "benign" endometrium. Endometrial hyperplasia was classified based on glandular complexity and nuclear atypia with both simple and complex grouped as "hyperplasia" or "atypical hyperplasia". All endometrial tumors were staged according to the TNM staging system endorsed by the American Joint Committee on Cancer (AJCC) and the International Union Against Cancer (UICC) and limited to endometrioid types¹⁶. Representative hematoxylin and eosin images are provided in Fig. S1. Low grade adenocarcinomas were identified based on architectural evidence of stromal invasion, usually in the form of stromal disappearance, desmoplasia, necrosis, or a combination of these findings between adjacent glands. Type I endometrial cancer variants such as ciliated, secretory, papillary (villoglandular), adenoacanthoma, and adenosquamous were included. For this particular analysis, 453 samples from 158 patients contained adequate ALDH1 immunostaining information for evaluation. Of these, 33 patients had metachronous samples with disease progression to cancer. Table 1 summarizes clinical variables and patient groups as well as ALDH1 expression in each subgroup.

All the cases were reviewed using the World Health Organization histological criteria for the diagnosis of endometrial carcinoma and hyperplasia². We evaluated the hematoxylin and eosin stained slides for gland-to-stroma ratio (glandular crowding), architectural abnormalities (gland confluency, cribriforming, and papillary architecture). We also evaluated the sections for cytological atypia which includes nucleus-to-cytoplasm ratio, presence and prominence of nucleoli, nuclear chromatin quality, and mitotic activity by light microscopy. If there was an increase in gland-to-stroma ratio or architectural atypia with or without cytological atypia, those cases were considered as no response to therapy². Distinction of well differentiated endometrioid carcinoma

	All patients	ALDH1 negative (% of total)	ALDH1 positive (% of total)	p value
Total	158	105 (66%)	53 (34%)	
BMI (kg/m²)				
Median (range)	27 (16–57)	27 (16–56)	28 (20–57)	0.13 ^a
Mean	29	28	30	
BMI < 30	83 (60%)	56 (40%)	27 (19%)	0.72 ^b
BMI ≥ 30	56 (40%)	36 (26%)	20 (14%)	
Ethnicity				
Others	28 (19%)	17 (11%)	11 (7%)	0.50 ^b
Caucasian	122 (81%)	84 (56%)	38 (25%)	
Age of 1st biopsy (years)				
Median (range)	46 (24–83)	46 (24–74)	47 (29–83)	0.87 ^a
Mean	47	47	47	
Age of EC diagnosis (years)				
Median (range)	56 (30–86)	60 (30–79)	55 (35–86)	0.31 ^a
Mean	57	58	55	
Number of women	41	23	18	
Follow-up time (months)				
Mean	64	72	49	0.01 ^a
Median (range)	54 (0–249)	55 (0–249)	45 (0–176)	
Smoking history				
Yes	50 (35%)	32 (22%)	18 (13%)	0.86 ^b
No	94 (65%)	62 (43%)	32 (22%)	
Gravidity				
Median (range)	2 (0–8)	2 (0–8)	2 (0–6)	0.80 ^b
Parity				
Median (range)	1 (0–6)	1 (0–6)	1 (0–4)	0.81 ^b
0–1	78 (53%)	48 (33%)	30 (21%)	
≥ 2	68 (47%)	47 (32%)	21 (14%)	
Menopause (years)				
Median (range)	50 (31–59)	50 (31–59)	50 (34–56)	0.69 ^a
Mean	49	49	49	
< 48 years	38 (27%)	24 (17%)	14 (30%)	
48–52 years	71 (51%)	49 (35%)	22 (16%)	
> 52 years	31 (22%)	21 (15%)	10 (7%)	
Diabetes mellitus				
No	113 (80%)	75 (53%)	38 (27%)	0.67 ^b
Yes	29 (20%)	18 (13%)	11 (8%)	
Estrogen therapy history				
Yes	82 (53%)	57 (37%)	25 (16%)	0.61 ^b
No	73 (47%)	47 (30%)	26 (17%)	
Progesterone therapy history				
Yes	109 (70%)	73 (47%)	36 (23%)	1 ^b
No	46 (30%)	31 (20%)	15 (10%)	

Table 1. Clinical variables and patient groups stratified based on cytoplasmic ALDH1 expression. ^aMann–Whitney. ^bFisher’s Exact.

from atypical hyperplasia/endometrial intraepithelial neoplasia was based on the presence of stromal invasion, altered endometrial stroma or a papillary architecture as per WHO guidelines².

Immunohistochemistry. Five-micrometer thick TMA sections were de-paraffinized in three washes of xylene and then rehydrated in serial dilutions of ethanol. Antigen retrieval was performed by placing the slides in a container of 0.1 mol/L citrate, pH 6.0, at 95 °C for 20 min. ALDH1 expression was detected using clone 44/ALDH1 (1:100; cat #611194, BD Biosciences, San Jose, CA, USA). Staining was visualized using DAKO EnVision + System, HRP (Agilent, Santa Clara, CA). Counterstaining was performed with hematoxylin. Slides were then placed in distilled water, dehydrated and mounted. An isotype control (MAB002, R&D Systems) was used for the negative control slides.

Results were analyzed by a pathologist (Y.E.) who performed scoring of the samples by rating the intensity from 0 to 3 (0 = below the level of detection, 1 = weak, 2 = moderate, 3 = strong) and percentage of cells staining at each intensity. A histologic score (H-score) was calculated for each sample by multiplying the percentage of positive cells by the intensity score. For cytoplasmic and nuclear expression, positive ALDH1 expression was defined as an H-score being larger than 0. For the purpose of reproducibility, two pathologists including one gynecological pathologist (N.A.M) and a general surgical pathologist (Y.E), both of who was blinded to the clinical data, have reviewed each slide and scored the morphology and location of ALDH1 + cells on each slide.

Statistics. Statistical analyses were performed using R (<http://www.R-project.org>) including the 'survival' and 'survminer' packages. Pooling criteria were as previously described¹⁵. To examine differences in ALDH1 expression between samples, the Kruskal–Wallis test, Mann–Whitney U test and Spearman correlation were employed. The Kruskal–Wallis test was used to examine differences in ALDH1 expression in relation to the development of cancer. A mean pooled H-score for ALDH1 was calculated across the three cores used in each histologic sample. Since intensity of staining did not seem to affect the outcomes of the results, we used percentage of positivity alone for our calculations. The dependence between categorical variables was tested using the Fisher's exact test. Estimation curves for probability of cancer-free survival were generated using the Kaplan–Meier method, and comparisons made using the log-rank test. Hazard ratios and prognostic significance of ALDH1 expression were estimated using the Cox proportional hazards model. For barplots, data is presented as the mean expression \pm standard error of the mean (SEM). For all results, $p < 0.05$ was considered significant.

Results

ALDH expression in endometrial cancer. High ALDH activity has been associated with self-renewal in a variety of normal and tumor tissues including the prostate, breast, lung, colon, cervix, and ovary¹⁷, but little is known about its expression in the endometrium. As a starting point, all 18 isoforms were queried using the The Cancer Genome Atlas (TCGA) PanCancer Atlas in 527 patients with uterine Corpus Endometrial Carcinoma¹⁸. Within all endometrial cancer subtypes, ALDH was present in 57% of patients, with ALDH1 representing the cumulative dominant isoform (Fig. 1A). ALDH isoforms were present in all subtypes of endometrial cancer including serous, papillary, and endometrioid (Fig. 1B). Analysis revealed upregulation of ALDH mRNA in 62.4% of serous/papillary tumors, 57.1% of mixed, and 53.7% of endometrioid endometrial cancers. To understand the significance of this, we evaluated all ALDH isoforms as well as only ALDH1 for potential correlation with survival. To perform this analysis, we utilized The Cancer Genome Atlas (TCGA) and found a significant correlation between overall survival and high expression of the ALDH gene signatures (Fig. 1C). Within the TCGA endometrial cancer cohort, ALDH1 also correlated with survival (Fig. 1D).

The ALDH^{high} subpopulation of endometrial cancer cells have CSC properties. To next verify that ALDH^{high} versus ALDH^{low} cells show biological differences, we determined whether ALDH activity could enrich for cells with a higher proliferative capacity in vitro. HEC1A and HEC1B endometrial cancer cell lines were sorted by FACS and designated as ALDH^{high} or ALDH^{low} cell population. To compare the biological behaviour of these two sorted subpopulations, we evaluated their growth curves in vitro. Compared to ALDH^{low} cells, ALDH^{high} cells grew faster over a 5 day incubation period (Fig. 2).

Clinical characteristics. While ALDH activity has been implicated with cancer stem properties, little is known about its role in tumor progression. To address this gap, endometrial tissue from 158 patients was analyzed for ALDH1 expression, with clinical characteristics listed in Table 1. The median BMI was 27 (range 16–57), with 40% of the patients meeting the CDC criteria for obesity (BMI > 30). At some time, 20% of patients developed diabetes mellitus. Caucasians represented the major ethnic group examined (81%) while Hispanic/Latinas and African Americans comprised 8% and 5% of the array cohort respectively. 35% of women smoked. In this cohort of women, the median age for cessation of menstruation occurred at 50 year old (range 31–59). The first biopsy occurred at 46 years old (median age; range 24–83).

ALDH1 expression in normal endometrium. Initially, we evaluated the cytoplasmic expression of ALDH1 in benign endometrium (Fig. 3). Expression within the stratum basalis was scored independently from the functional layer, with representative images presented in Fig. 3A. In the stratum basalis, weak to moderate cytoplasmic expression occurred in $26.8 \pm 3.2\%$ of endometrial stromal cells while benign proliferative and secretory glands showed negligible levels (6.2 ± 1.2 and $9.1 \pm 2.4\%$, respectively) of ALDH1 expression (Fig. 3B; Kruskal–Wallis, p value = $1.1e-14$).

Several papers have suggested that outside of the cytoplasm, ALDH1 expression can be present in the nucleus^{19,20}, and thus, this site was independently scored. Very low levels of nuclear staining were observed, with generally less than 1% of cores showing any expression (Fig. S2A).

ALDH1 expression in glandular epithelium predicts malignant progression. ALDH1 expression was next evaluated for each spot on the TMA and analyzed relative to each histology during malignant progression. Figure 4 illustrates representative images of immunohistochemical staining across histologic groups. Within the epithelia, benign endometrium and hyperplasia showed similar, very low levels of ALDH1 expression. However, progression from hyperplasia to endometrial cancer revealed a step-wise augmentation in cytoplasmic ALDH1 expression (Fig. 5A; Spearman correlation, $\rho = 0.25$, $p = 2.7e-21$). The mean cytoplasmic positivity rose more than two-fold in atypia (from $7.0\% \pm 0.9$ to $16.2\% \pm 1.8\%$) and further increased in endometrial

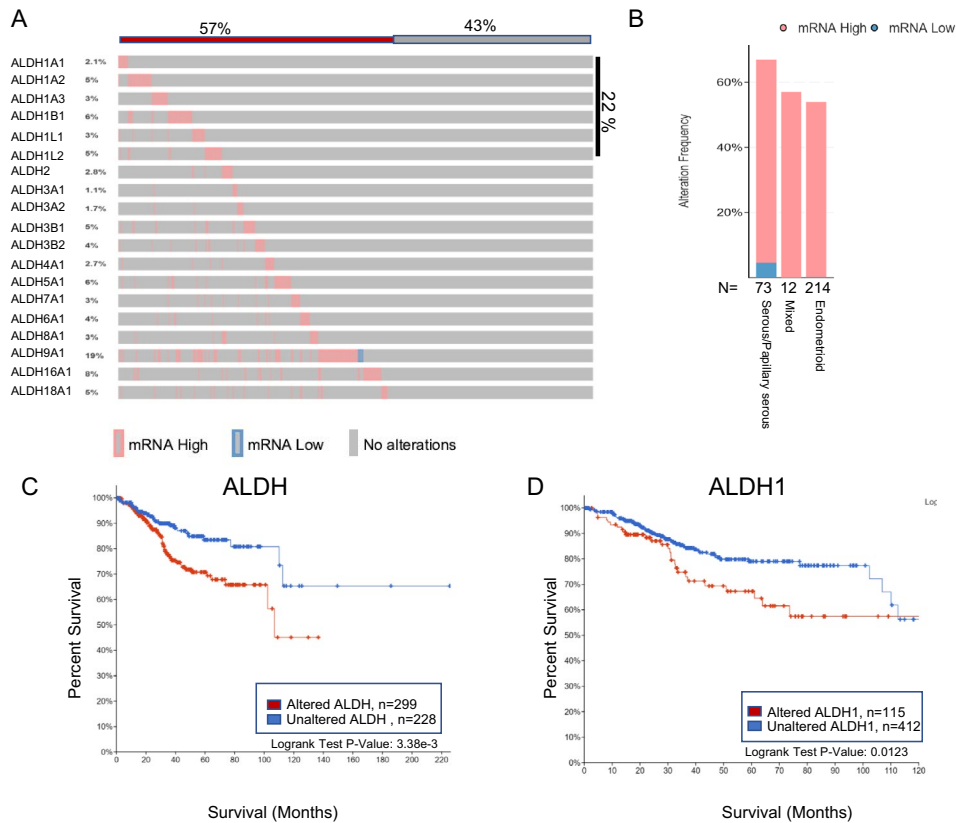


Figure 1. (A) ALDH expression was evaluated in the PanCancer Atlas. An OncoPrint depicts the results and shows the graphical summary of mRNA alterations in all 19 ALDH isoforms across a set of 527 endometrial tumor samples (TCGA, PanCancer Atlas). (B) Distribution of ALDH isoforms in serous/papillary, mixed or endometrioid endometrial cancer. (C) Kaplan–Meier plot showing overall survival of Endometrial Carcinoma patients from the TCGA database with altered (red, number of patients, $n = 299$) or unaltered ALDH expression (blue, number of patients, $n = 228$). The two-sided log-rank P value is displayed. (D) Kaplan–Meier plot showing overall survival of Endometrial Carcinoma patients from the TCGA database with altered (red; number of patients, $n = 115$) or unaltered ALDH1 expression (blue, number of patients, $n = 412$). A two-sided log-rank P value is displayed.

carcinoma ($20.7\% \pm 1.8\%$). Nuclear staining for ALDH1 remained very low in all histologies and showed only weak correlation with progression of hyperplasia to malignancy (Fig. S2B; $\rho = 0.06$, $p = 0.03$).

Interestingly, ALDH1 positivity at the time of first biopsy did not correlate with many variables commonly associated with endometrial cancer development including age or BMI, and its expression did not associate with an early onset of menopause (Table 1). In the patient cohort examined, 83% of patients were on hormone replacement therapy, with 45% on estrogen and progesterone at some point during their follow-up. When examining each hormone independently, no correlation between ALDH1 positivity and the use of estrogen and/or progesterone were observed. However, ALDH1 expression did correlate with follow-up time or the number of months from the date of the first informative surgical pathology report to the date of the last surgical intervention. ALDH1 positive tumors correlated with a shorter follow-up time with patients requiring surgical intervention 23 months earlier than those with negative tumors (Table 1).

The results thus far suggested that cytoplasmic ALDH1 positively correlated with malignant progression. Within each histological group, however, there was heterogeneity in ALDH1 expression with some individuals showing higher ALDH1 levels than others. We therefore examined whether ALDH1 provided information regarding future tumor development. First, we dichotomized ALDH1 expression from patients in each histologic group into those who developed or did not develop cancer. In normal tissue, ALDH1 largely resides in epithelia found in the stratum basalis. During premalignant progression, an increase occurred in cytoplasmic ALDH1 expression in patients who went on to develop cancer compared to those who did not (Fig. 6A–C). In all cases, amplified ALDH1 trended in patients where disease progressed. Histologically benign tissue from patients who ultimately went on to develop cancer showed statistically significant increased cytoplasmic ALDH1 positivity compared to those who did not (Fig. 6A; $5.6 \pm 1.3\%$ compared to $23 \pm 8.8\%$, $p = 0.002$). Similarly, comparing patients with endometrial hyperplasia but without atypia, higher ALDH1 positivity was observed in women who went on to develop cancer compared to those who did not (Fig. 6B; $13.5 \pm 4.5\%$ compared to $4.6 \pm 1.3\%$, $p = 0.02$). Higher mean cytoplasmic ALDH1 expression in patients who developed endometrial cancer when initially presenting with atypical hyperplasia was also observed, but this trend was not statistically significant (Fig. 6C;

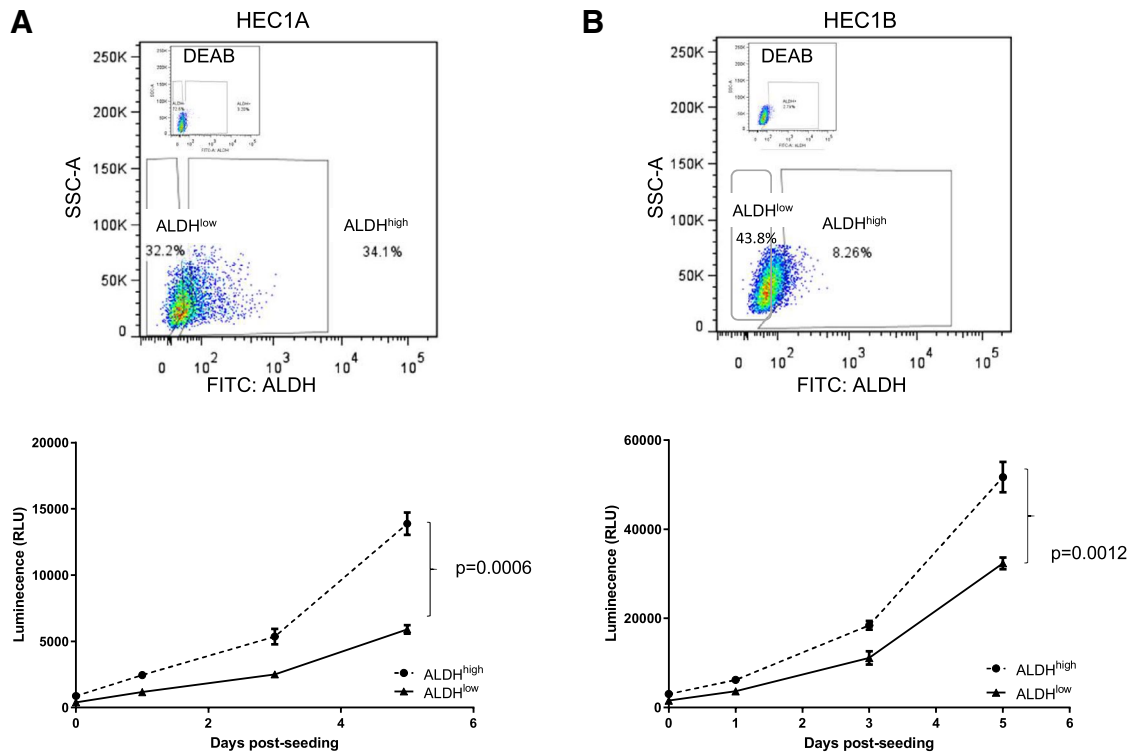


Figure 2. ALDH^{high} cells show enhanced proliferation. (A) Top, Flow diagram showing the gating of ALDH^{high} and ALDH^{low} HEC1A cells. Bottom, The proliferation of sorted populations was evaluated over 5 days. Each sample was analyzed in triplicate with data shown as the mean \pm SEM. The results shown are representative of three experiments. Two way ANOVA, $p=0.0006$. (B) ALDH^{high} and ALDH^{low} HEC1B cells were sorted as above (top panel), with cellular proliferation analyzed over 5 days (bottom panel). Each sample was analyzed in triplicate with data shown as the mean \pm SEM. The results shown are representative of three experiments. Two-way ANOVA, $p=0.0012$.

$p=0.71$). Nonetheless, the results collectively suggest that positive ALDH1 in the epithelium may enhance the malignant potential of hyperplastic endometrium.

We further analyzed this data using the Cox proportional hazards model with cytoplasmic ALDH1 as a continuous variable predictor (Table 2). In patients with hyperplasia or atypical hyperplasia, higher ALDH1 epithelial expression was associated with increased risk for progression to carcinoma ($p=1.4e-3$). A Kaplan–Meier plot (Fig. 6D) for patients with endometrial hyperplasia with or without atypia showed a shorter time interval for progression to cancer in those with ALDH1 positive cells than those that were completely negative (median time 57 months vs 144 months, hazard ratio (HR) = 2.66, 95% CI 1.27–5.58; $p=7.1e-03$).

ALDH1 stromal staining. An emerging issue in tumor progression centers on the interactions between cancer cells and the microenvironment, and several studies have suggested a role for stroma in inhibiting tumor growth^{21,22}. As prominent stromal staining occurred in several cores, its relative expression was assessed during stages of malignant progression. ALDH1 levels were highest in benign stroma and hyperplasia without atypia, then steadily decreased during progression to malignancy, with the lowest levels observed in endometrial cancer (Fig. 7A, $\rho=-0.28$, $p=5.9e-25$). When we next examined patients with endometrial hyperplasia, stromal expression of ALDH1 did not predict patients who developed cancer. However, for patients with atypical hyperplasia, lower levels were significantly associated with increased risk of progression to cancer ($p=0.002$). Mean stromal positivity was $58.2 \pm 5.9\%$ in those who did not develop cancer and $30.1 \pm 5.8\%$ in those who did.

Applying the continuous Cox proportional hazard model, higher percentage of stromal cells positive for ALDH1 conferred protection, with a hazard ratio of 0.98 (95% CI 0.974–0.996) and $p=6.9e-3$ (Table 2). Stromal ALDH1 expression was next assessed using Kaplan–Meier estimates for disease progression. Patients with higher stromal expression showed a longer median cancer free interval compared to patients with lower levels (130 vs. 70 months respectively; $p=0.012$) (Fig. 7B). When the results were merged, any glandular cytoplasmic positivity along with lower levels of stromal staining (cut point again defined by 50% expression level for stroma) suggested significantly poorer outcomes (Fig. 7C). Bivariate analysis showed a difference in median cancer free interval of 130 months vs 6 months ($p=5.67e-06$). Collectively, our results reveal an independent effect of ALDH1 within the stroma and epithelium.

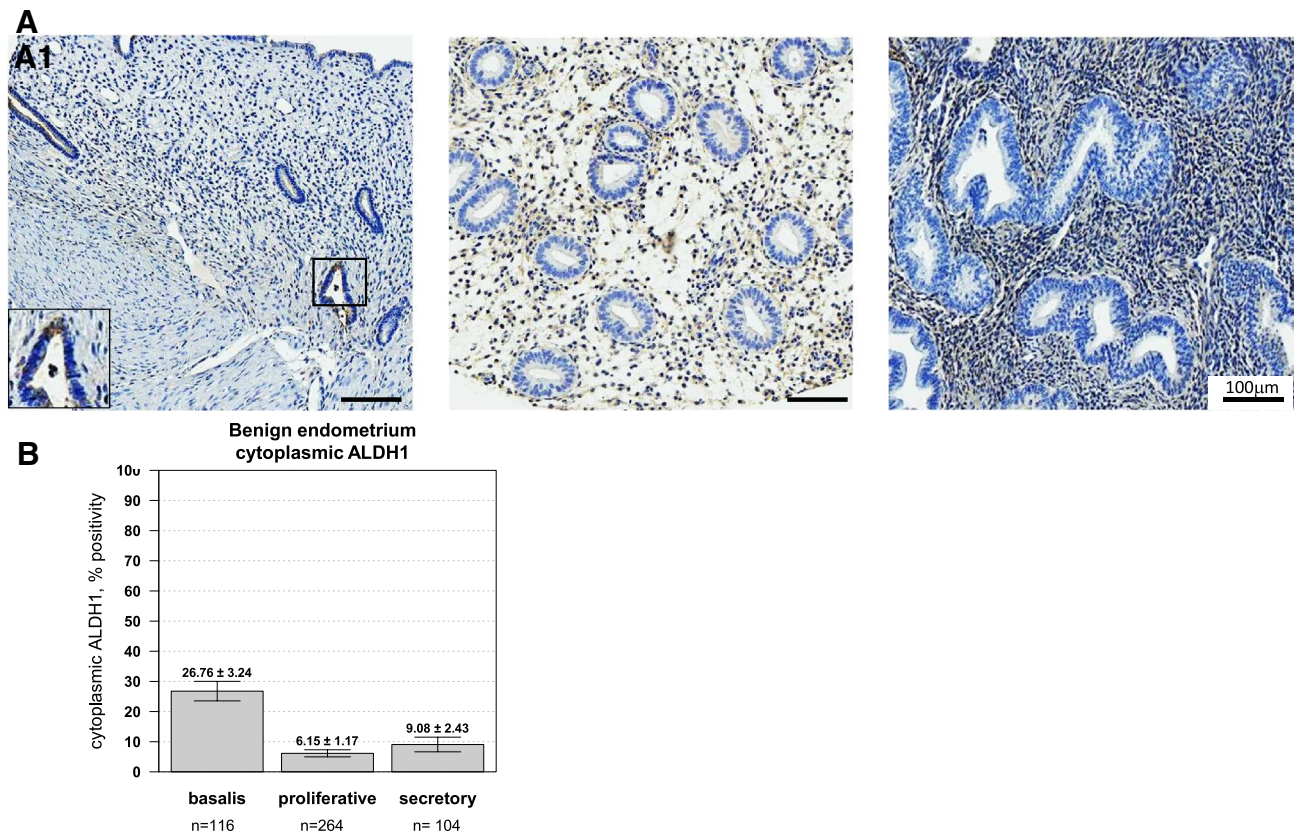


Figure 3. ALDH1 is expressed within the basal layer of the endometrium. (A) Representative cores representing the stratum basalis (A1) compared to proliferative (A2) or secretory (A3) endometrium. All images are 100X. The percentage of glands with positive expression were scored. In benign endometrial tissue, (B) Cytoplasmic ALDH1 expression was observed in endometrial glands of the stratum basalis (26.76 ± 3.24 , $n = 116$ cores) compared to both proliferative and secretory endometrium (Kruskal–Wallis p value = 1.145×10^{-14}). Significantly lower expression of ALDH1 was observed in the proliferative phase (6.15 ± 1.17 , $n = 264$ cores) and in the secretory phase (9.08 ± 2.43 , $n = 104$).

Discussion

Given the recent interest in cancer stem cells as therapeutic targets for decreasing potential of cancer metastasis and relapse, it is important to investigate the expression of cancer stem cell markers in pre-cancerous tissues and to understand the significance of the expression of these markers within a clinical context of predicting outcomes. High cytoplasmic ALDH1 expression predicts poor prognosis and/or increased tumor aggressiveness in various other cancer types^{23–25}, and TCGA analysis suggests that ALDH isoforms correlate with poor survival and enhanced proliferation in this study on patients with endometrial cancer. However, few studies to date have used ALDH1 to not just predict cancer aggressiveness but to even predict the development of cancer from potentially pre-neoplastic tissue. These studies, generally limited to the development of oral squamous cell carcinoma^{26,27}, have shown ALDH1 expression associated with a three-fold increased risk for the development of cancer²⁵. Our study is the first to our knowledge to demonstrate the utility of ALDH1 to predict endometrial cancer development.

In addition, our study is the first to demonstrate that in normal endometrial glands cytoplasmic ALDH1 expression largely resides within the basalis. This distinction may have important pathophysiologic implication as others have shown that high ALDH activity has been associated with stem and progenitor cells in various tissues^{28,29}. ALDH1, in particular, is highly expressed in hematopoietic progenitors, in intestinal crypt cells, as well as in normal mammary stem cells^{17,30,31}. In addition, high expression has been observed in hematopoietic stem cells (HSCs) where its effects influence retinoid metabolism³². Functionally, given that the ALDH superfamily of enzymes have been shown to catalyze the formation of retinoic acid and to be critical for the detoxification of endogenous and exogenous aldehydes¹⁷, we hypothesize that ALDH1 + cells within the basalis may identify the endogenous stem cell population of the endometrial glands.

Notably, epithelial cell staining of ALDH1 did not correlate with stromal expression. Instead, ALDH1 positive stromal staining was highest in benign endometrium and lowest in endometrial cancer. While its expression in the stroma has been well documented in multiple cancer types, the clinical implications of its expression have not been well established. Within the tumor microenvironment, multiple cell types including fibroblasts, endothelial cells, and immune cells shape epithelial cell maintenance and regeneration³³, and several studies have shown that stromal signals can regulate epithelial cell growth and progression in multiple tumor types, including those of

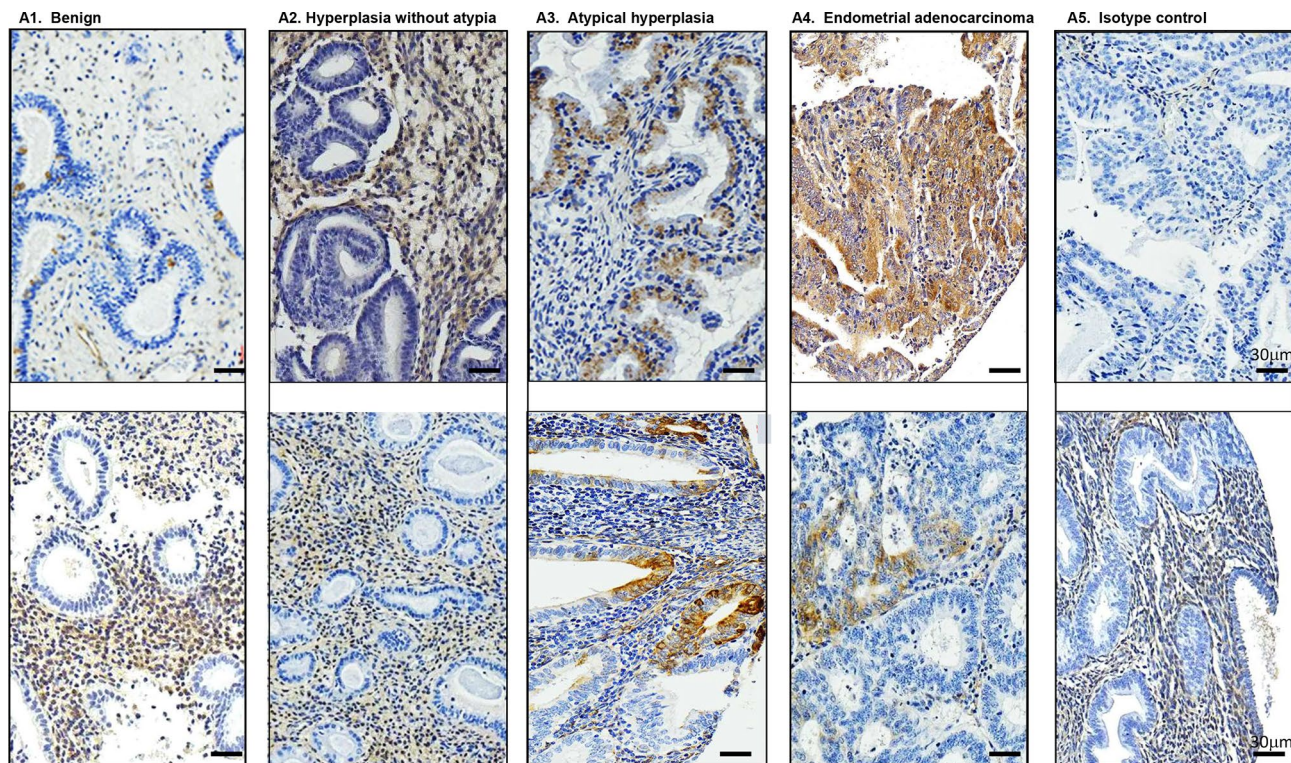


Figure 4. ALDH1 is expressed in premalignant endometrium. Immunohistochemical staining from representative cores of two patients per histology is shown. Within the endometrium, ALDH1 predominantly displayed a cytoplasmic distribution in glandular epithelium with some expression observed in the stroma. Magnification = 100X. Scale bar = 30 μ m.

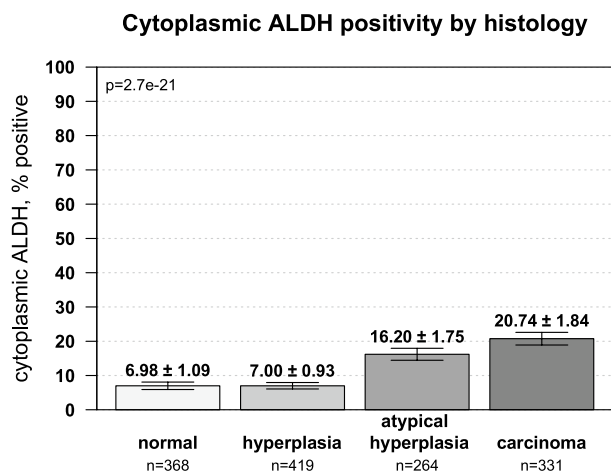


Figure 5. Epithelial ALDH1 expression increases occurs during malignant progression. The percentage of patients with epithelial ALDH1 expression showed a step-wise increase from endometrial hyperplasia to atypia to endometrial cancer. Spearman correlation for histologic progression was $\rho=0.25$ and $p=2.7e-21$.

the breast, pancreas, colon and prostate^{33–35}. Our results suggest, similar to recent studies in the breast^{21, 36}, that ALDH1 positive stroma offers a potential protective effect in the endometrium.

Given these findings and its putative roles in cell differentiation, ALDH1 positivity within endometrial epithelia seems to be a biologically important marker of cancer stem cell activity. We have demonstrated that ALDH1 expression can predict cancer development, in addition to predicting patient survival as was demonstrated by others^{37, 38}. Though it remains unknown whether ALDH1 plays a causative role in the transition of hyperplasia/atypia to malignancy, it is clear that the reported actions of ALDH1 may contribute to several of the behavioral properties of CSCs and potentially predict responsiveness to therapy. For example, ALDH enzymes scavenge reactive oxygen species, protecting these cells from apoptosis, perhaps contributing to aggressive CSC behavior and resistance from targeted and chemical therapies^{3, 39}.

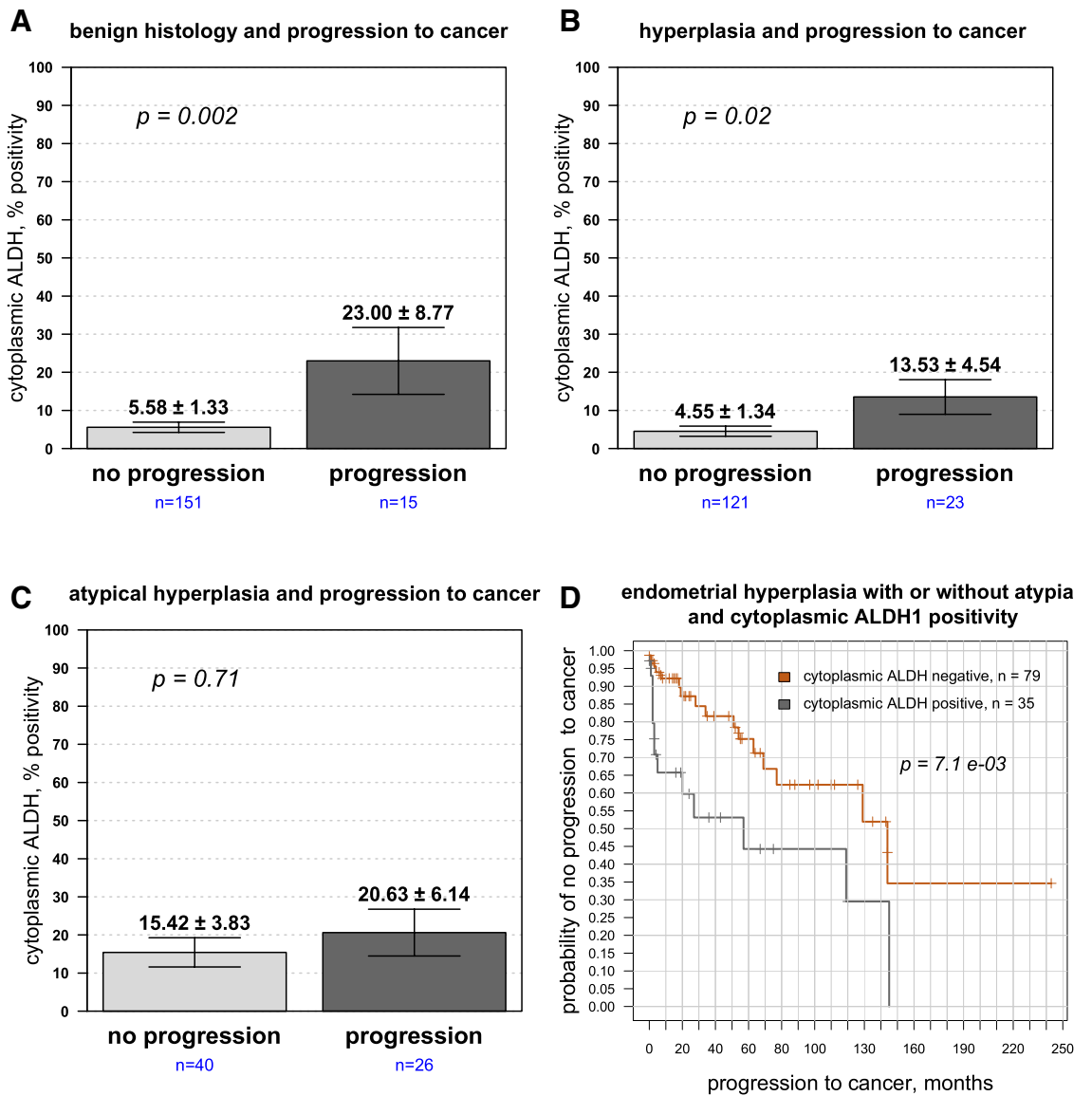


Figure 6. ALDH1 cytoplasmic expression in epithelia is upregulated in patients who ultimately develop endometrial cancer. ALDH1 expression was evaluated in epithelia from patients with (A) histologically normal endometrium, (B) hyperplasia without atypia and (C) atypical hyperplasia, with expression dichotomized into those who developed or did not develop cancer. Epithelial ALDH1 expression predicted increased likelihood of progression to developing cancer in patients with benign endometrium ($p = 0.002$) and hyperplasia ($p = 0.02$), but did not reach significance in atypical hyperplasia. (D) Kaplan–Meier plot showing time to progression to cancer for cytoplasmic ALDH1 expression in endometrial hyperplasia with or without atypia: the difference in median time to cancer diagnosis 145 months when ALDH1 negative vs 56 months when ALDH1 was positive, HR = 2.66, $p = 7.1 \times 10^{-3}$.

Cellular compartment	Hazard ratio (95% confidence interval)	p value
Epithelial expression	1.022 (1.007–1.036)	1.4e–03
Stromal expression	0.985 (0.974–0.996)	6.91e–03

Table 2. Univariate Cox proportional hazards analysis for ALDH1 as a predictor of development of carcinoma in patients with hyperplasia or atypical hyperplasia.

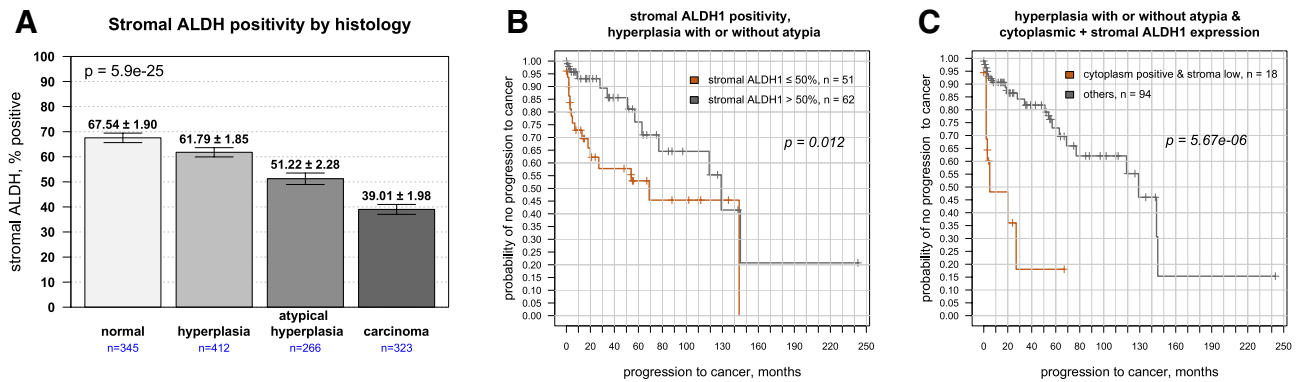


Figure 7. Stromal ALDH1 expression in premalignant lesions predict future tumor development. **(A)** Stromal ALDH1 expression showed a step-wise decrease from normal endometrium to endometrial hyperplasia to atypical hyperplasia to endometrial cancer (Spearman rho = -0.28 , $p = 5.9e-25$). **(B)** Stromal ALDH1 expression reduced the likelihood of patients to develop cancer. Kaplan–Meier survival plot showing higher stromal ALDH1 expression (> 50% of cells) versus lower expression in hyperplastic lesions with or without atypia: difference in median time to cancer diagnosis 129 months vs 69 months, HR=0.39, $p = 0.012$. **(C)** Patients with ALDH1 positivity in the epithelium and low immunostaining in stroma (< 50%) also showed shorter times to cancer diagnosis compared to others (median time interval 6 months vs 129 months, $p = 5.67e-06$).

In conclusion, we found in our study that while ALDH1 expression in endometrial epithelia predicts progression from hyperplasia and atypia to cancer, within the stroma it offers a protective effect. Additional studies will be needed to determine if there is any cross-talk between ALDH enzymes within these two compartments or if each is regulated independently.

Received: 30 September 2020; Accepted: 30 April 2021

Published online: 07 June 2021

References

- Lee, Y. C., Lheureux, S. & Oza, A. M. Treatment strategies for endometrial cancer: current practice and perspective. *Curr. Opin. Obstet. Gynecol.* **29**, 47–58 (2017).
- Zaino, R. *et al.* *Tumours of the Uterine Corpus: Endometrial Tumors and Precursor* 4th edn. (International Agency for Research on Cancer, 2014).
- Sanderson, P. A., Critchley, H. O. D., Williams, A. R. W., Arends, M. J. & Saunders, P. T. K. New concepts for an old problem: the diagnosis of endometrial hyperplasia. *Hum. Reprod. Update* **23**, 232–254 (2016).
- Batlle, E. & Clevers, H. Cancer stem cells revisited. *Nat. Med.* **23**, 1124–1134 (2017).
- Akbarzadeh, M. *et al.* Current approaches in identification and isolation of cancer stem cells. *J. Cell. Physiol.* **234**, 14759–14772 (2019).
- Kiyohara, M. H. *et al.* EMP2 is a novel therapeutic target for endometrial cancer stem cells. *Oncogene* **36**, 5793–5807 (2017).
- Tahara, S. *et al.* S100A4 accelerates the proliferation and invasion of endometrioid carcinoma and is associated with the “MELF” pattern. *Cancer Sci.* **107**, 1345–1352 (2016).
- Chen, J. *et al.* Prognostic value of cancer stem cell marker ALDH1 expression in colorectal cancer: a systematic review and meta-analysis. *PLoS ONE* **10**, e0145164 (2015).
- Oh, S. Y. *et al.* ALDH1 is a prognostic factor for patients treated with neoadjuvant chemoradiotherapy and radical resection for stage III rectal cancer. *J. Surg. Oncol.* **111**, 243–247 (2015).
- Xu, N. *et al.* Aldehyde dehydrogenase 1 (ALDH1) expression is associated with a poor prognosis of bladder cancer. *Cancer Epidemiol.* **39**, 375–381 (2015).
- Matsika, A. *et al.* Cancer stem cell markers in prostate cancer: an immunohistochemical study of ALDH1, SOX2 and EZH2. *Pathology* **47**, 622–628 (2015).
- Zhong, Y. *et al.* ALDH1 is a better clinical indicator for relapse of invasive ductal breast cancer than the CD44+/CD24– phenotype. *Med. Oncol. (Northwood Lond. Engl.)* **31**, 864 (2014).
- Mansour, S. F. & Atwa, M. M. Clinicopathological significance of CD133 and ALDH1 cancer stem cell marker expression in invasive ductal breast carcinoma. *Asian Pac. J. Cancer Prev. APJCP* **16**, 7491–7496 (2015).
- Gao, J. *et al.* Integrative analysis of complex cancer genomics and clinical profiles using the cBioPortal. *Sci. Signal* **6**, pl1 (2013).
- Habeeb, O. *et al.* Epithelial membrane protein-2 expression is an early predictor of endometrial cancer development. *Cancer* **116**, 4718–4726 (2010).
- Raffone, A. *et al.* Endometrial hyperplasia and progression to cancer: Which classification system stratifies the risk better? A systematic review and meta-analysis. *Arch. Gynecol. Obst.* **299**, 1233–1242 (2019).
- Vassalli, G. Aldehyde dehydrogenases: not just markers, but functional regulators of stem cells. *Stem Cells Int.* **2019**, 3904645 (2019).
- Hoadley, K. A. *et al.* Cell-of-origin patterns dominate the molecular classification of 10,000 tumors from 33 types of cancer. *Cell* **173**, 291–304 (2018).
- López-González, A., Salas, C., Provencio, M., Córdoba, M. & Gamallo, C. Aldehyde dehydrogenases in early stage lung cancer: nuclear expression. *Clin. Transl. Oncol. Off. Publ. Fed. Span. Oncol. Soc. Natl. Cancer Inst. Mexico* **16**, 931–934 (2014).
- Wang, Y. *et al.* Cancer stem cell marker ALDH1 expression is associated with lymph node metastasis and poor survival in esophageal squamous cell carcinoma: a study from high incidence area of northern China. *Dis. Esophagus off. J. Int. Soc. Dis. Esophagus* **25**, 560–565 (2012).

21. Lee, J. S. & Kim, W. G. Potential protective effect of ALDH-1 stromal expression against early recurrence of operable breast cancers. *Stem Cell Investig.* **5**, 43 (2018).
22. Pineda, M. J., Lu, Z., Cao, D. & Kim, J. J. Influence of cancer-associated endometrial stromal cells on hormone-driven endometrial tumor growth. *Hormones Cancer* **6**, 131–141 (2015).
23. Sobczuk, K. & Sobczuk, A. New classification system of endometrial hyperplasia WHO 2014 and its clinical implications. *Przegląd Menopauzalny Menopause Rev.* **16**, 107–111 (2017).
24. Xu, X. *et al.* Aldehyde dehydrogenases and cancer stem cells. *Cancer Lett.* **369**, 50–57 (2015).
25. Koppaka, V. *et al.* Aldehyde dehydrogenase inhibitors: a comprehensive review of the pharmacology, mechanism of action, substrate specificity, and clinical application. *Pharmacol. Rev.* **64**, 520–539 (2012).
26. Habiba, U. *et al.* ALDH1 and podoplanin expression patterns predict the risk of malignant transformation in oral leukoplakia. *Oncol. Lett.* **13**, 321–328 (2017).
27. Abdulmajeed, A. A., Dalley, A. J. & Farah, C. S. Putative cancer stem cell marker expression in oral epithelial dysplasia and squamous cell carcinoma. *J. Oral Pathol. Med. Off. Publ. Int. Assoc. Oral Pathol. Am. Acad. Oral Pathol.* **42**, 755–760 (2013).
28. Roehrich, M.-E., Spicher, A., Milano, G. & Vassalli, G. Characterization of cardiac-resident progenitor cells expressing high aldehyde dehydrogenase activity. *Biomed. Res. Int.* **2013**, 503047–503047 (2013).
29. Tomita, H., Tanaka, K., Tanaka, T. & Hara, A. Aldehyde dehydrogenase 1A1 in stem cells and cancer. *Oncotarget* **7**, 11018–11032 (2016).
30. Balber, A. E. Concise review: aldehyde dehydrogenase bright stem and progenitor cell populations from normal tissues: characteristics, activities, and emerging uses in regenerative medicine. *Stem Cells (Dayton, Ohio)* **29**, 570–575 (2011).
31. Liu, S. *et al.* Breast cancer stem cells transition between epithelial and mesenchymal states reflective of their normal counterparts. *Stem Cell Rep.* **2**, 78–91 (2014).
32. Laird, D. J., De Tomaso, A. W. & Weissman, I. L. Stem cells are units of natural selection in a colonial ascidian. *Cell* **123**, 1351–1360 (2005).
33. Reina-Campos, M., Moscat, J. & Diaz-Meco, M. Metabolism shapes the tumor microenvironment. *Curr. Opin. Cell Biol.* **48**, 47–53 (2017).
34. Torphy, R. J. *et al.* Stromal content is correlated with tissue site, contrast retention, and survival in pancreatic adenocarcinoma. *JCO Precis. Oncol.* **2**, 1–12 (2018).
35. Al Shareef, Z. *et al.* Protective effect of stromal Dickkopf-3 in prostate cancer: opposing roles for TGFBI and ECM-1. *Oncogene* **37**, 5305–5324 (2018).
36. Bednarz-Knoll, N. *et al.* Stromal expression of ALDH1 in human breast carcinomas indicates reduced tumor progression. *Oncotarget* **6**, 26789–26803 (2015).
37. Rabinovich, I. *et al.* Cancer stem cell markers ALDH1 and CD44+/CD24- phenotype and their prognosis impact in invasive ductal carcinoma. *Eur. J. histochem. EJH* **62**, 2943 (2018).
38. Rahadiani, N. *et al.* Expression of aldehyde dehydrogenase 1 (ALDH1) in endometrioid adenocarcinoma and its clinical implications. *Cancer Sci.* **102**, 903–908 (2011).
39. Kida, K. *et al.* Effect of ALDH1 on prognosis and chemoresistance by breast cancer subtype. *Breast Cancer Res. Treat.* **156**, 261–269 (2016).

Acknowledgements

We thank Ann Chan for her technical guidance with immunohistochemistry.

Author contributions

M.W. conceived the experiments. HS stained the T.M.A., and ALDH1 expression was scored by Y.E. & N.A.M. J.T. performed the in vitro experiments. J.P.U., V.M., S.S., and A.C. analyzed data. All authors were involved in writing the paper and had final approval of the submitted and published versions.

Funding

This work was generously supported by Charles Drew University/UCLA NIH U54-CA-143931 (Y.E.; M.W.), the Translational Research Fund (J.U., N.M., M.W.), and the NIH/National Center for Advancing Translational Sciences (NCATS) UL1TR000124.

Competing interests

The authors declare no competing interests.

Additional information

Supplementary Information The online version contains supplementary material available at <https://doi.org/10.1038/s41598-021-90570-3>.

Correspondence and requests for materials should be addressed to M.W.

Reprints and permissions information is available at www.nature.com/reprints.

Publisher's note Springer Nature remains neutral with regard to jurisdictional claims in published maps and institutional affiliations.



Open Access This article is licensed under a Creative Commons Attribution 4.0 International License, which permits use, sharing, adaptation, distribution and reproduction in any medium or format, as long as you give appropriate credit to the original author(s) and the source, provide a link to the Creative Commons licence, and indicate if changes were made. The images or other third party material in this article are included in the article's Creative Commons licence, unless indicated otherwise in a credit line to the material. If material is not included in the article's Creative Commons licence and your intended use is not permitted by statutory regulation or exceeds the permitted use, you will need to obtain permission directly from the copyright holder. To view a copy of this licence, visit <http://creativecommons.org/licenses/by/4.0/>.

© The Author(s) 2021