

UC San Diego

UC San Diego Previously Published Works

Title

Deficient Event-Related Theta Oscillations in Individuals at Risk for Alcoholism: A Study of Reward Processing and Impulsivity Features

Permalink

<https://escholarship.org/uc/item/8b53d9w3>

Journal

PLOS ONE, 10(11)

ISSN

1932-6203

Authors

Kamarajan, Chella
Pandey, Ashwini K
Chorlian, David B
[et al.](#)

Publication Date

2015

DOI

10.1371/journal.pone.0142659

Copyright Information

This work is made available under the terms of a Creative Commons Attribution License, available at <https://creativecommons.org/licenses/by/4.0/>

Peer reviewed

RESEARCH ARTICLE

Deficient Event-Related Theta Oscillations in Individuals at Risk for Alcoholism: A Study of Reward Processing and Impulsivity Features

Chella Kamarajan^{1*}, Ashwini K. Pandey¹, David B. Chorlian¹, Niklas Manz¹, Arthur T. Stimus¹, Andrey P. Anokhin², Lance O. Bauer³, Samuel Kuperman⁴, John Kramer⁴, Kathleen K. Bucholz², Marc A. Schuckit⁵, Victor M. Hesselbrock³, Bernice Porjesz¹

1 SUNY Downstate Medical Center, Brooklyn, NY, United States of America, **2** Washington University School of Medicine, St. Louis, MO, United States of America, **3** University of Connecticut Health Center, Farmington, CT, United States of America, **4** University of Iowa, Iowa City, IA, United States of America, **5** University of California San Diego, San Diego, CA, United States of America

* kam@hbnl.downstate.edu



OPEN ACCESS

Citation: Kamarajan C, Pandey AK, Chorlian DB, Manz N, Stimus AT, Anokhin AP, et al. (2015) Deficient Event-Related Theta Oscillations in Individuals at Risk for Alcoholism: A Study of Reward Processing and Impulsivity Features. PLoS ONE 10 (11): e0142659. doi:10.1371/journal.pone.0142659

Editor: Osama Ali Abulseoud, Mayo Clinic, UNITED STATES

Received: June 23, 2015

Accepted: October 26, 2015

Published: November 18, 2015

Copyright: © 2015 Kamarajan et al. This is an open access article distributed under the terms of the [Creative Commons Attribution License](https://creativecommons.org/licenses/by/4.0/), which permits unrestricted use, distribution, and reproduction in any medium, provided the original author and source are credited.

Data Availability Statement: COGA data used in the current study are available from the website <<https://zork5.wustl.edu/coganeu/contacts.html>> upon written request. Details regarding access to COGA data are available through the National Institute of Alcoholism and Abuse at <http://www.niaaa.nih.gov/research/major-initiatives/collaborative-studies-genetics-alcoholism-coga-study/#Access>. COGA data are also available from the publically accessible dbGAP database at <http://www.ncbi.nlm.nih.gov/gap/?term=COGA> [IDs: phs000092.v1.p1, phs000125.v1.p1, and phs000763.v1.p1].

Abstract

Background

Individuals at high risk to develop alcoholism often manifest neurocognitive deficits as well as increased impulsivity. Event-related oscillations (EROs) have been used to effectively measure brain (dys)function during cognitive tasks in individuals with alcoholism and related disorders and in those at risk to develop these disorders. The current study examines ERO theta power during reward processing as well as impulsivity in adolescent and young adult subjects at high risk for alcoholism.

Methods

EROs were recorded during a monetary gambling task (MGT) in 12–25 years old participants ($N = 1821$; males = 48%) from high risk alcoholic families (HR, $N = 1534$) and comparison low risk community families (LR, $N = 287$) from the Collaborative Study on the Genetics of Alcoholism (COGA). Impulsivity scores and prevalence of externalizing diagnoses were also compared between LR and HR groups.

Results

HR offspring showed lower theta power and decreased current source density (CSD) activity than LR offspring during loss and gain conditions. Younger males had higher theta power than younger females in both groups, while the older HR females showed more theta power than older HR males. Younger subjects showed higher theta power than older subjects in each comparison. Differences in topography (i.e., frontalization) between groups were also observed. Further, HR subjects across gender had higher impulsivity scores and increased prevalence of externalizing disorders compared to LR subjects.

Funding: NIH grant U10AA008401 from the National Institute on Alcohol Abuse and Alcoholism (NIAAA) (<http://www.niaaa.nih.gov/>) and the National Institute on Drug Abuse (NIDA) (<http://www.drugabuse.gov/>) (BP, VMH), and grant AA05524 (BP) from NIAAA (<http://www.niaaa.nih.gov/>). The funders had no role in study design, data collection and analysis, decision to publish, or preparation of the manuscript.

Competing Interests: The authors have declared that no competing interests exist.

Conclusions

As theta power during reward processing is found to be lower not only in alcoholics, but also in HR subjects, it is proposed that reduced reward-related theta power, in addition to impulsivity and externalizing features, may be related in a predisposition to develop alcoholism and related disorders.

Introduction

Electrical activity of the human brain, termed electroencephalogram (EEG), was first recorded by the German physiologist and psychiatrist Hans Berger (1873–1941) in 1924 (cf. [1]). The EEG activity recorded during specific cognitive events has been studied either in the time domain as event-related potentials (ERPs) comprising trial-averaged waveforms, or in the frequency domain as event-related oscillations (EROs) with time-frequency characteristics. According to Basar [2], specific frequencies of EROs underlie different cognitive functions, and selectively distributed delta, theta, alpha and gamma oscillatory systems act as resonant communication networks through large populations of neurons during cognitive processing. ERO signals with phase-alignment across the trials of cognitive events are termed ‘evoked’ or ‘phase-locked’ oscillations, while the signals that are ‘out-of-phase’ are ‘induced’ or ‘non-phase-locked’ oscillations [3]. The ‘total’ ERO power consists of both evoked and induced signals [4].

ERO methods have been effectively implemented to investigate cognitive processing in healthy individuals [5–14] as well as in a variety of clinical conditions [15], including alcohol use disorders (AUDs) [16]. AUD is a common disorder with complex etiology involving genetic and environmental influences and their interactions (cf. [17]). Several neurocognitive dysfunctions, reflecting impairments in several brain regions and/or neural circuitries, have been associated with AUDs. In recent years, several studies have employed EROs to investigate brain dysfunction in individuals with (chronic) alcoholism as well as in those with a predisposition to develop alcoholism (for a review, see Pandey et al. [16]).

Over the past few decades, studies have reported electrophysiological abnormalities related to resting state and during cognitive processing in individuals with AUDs and in high risk (HR) subjects with a family history of alcoholism (for reviews, see [17–19]). Dysregulation in reward systems is a prominent dysfunction in alcoholism [20–22], and electrophysiological studies during gambling paradigms have revealed reward processing dysfunction in alcoholics and HR offspring [23–26]. ERP studies of reward processing have frequently employed monetary gambling tasks and examined two major components: a negative going component around 200–250 ms called the outcome- or feedback-related negativity (ORN or FRN or N2), and a positive going component at about 300–500 ms called the outcome- or feedback-related positivity (ORP or FRP or P3) [27–42]. These outcome-related ERP components have been shown to be predominantly composed of theta oscillations [14,30,39,43–45] that mediate aspects of cognitive processing [14,15,46–60], and have been implicated in several neuropsychiatric disorders (for reviews, see [15,61–63]), including alcoholism [4,16,49,64–66].

While the electrophysiological signatures of reward processing have been well-established, the reward processing mechanisms that may mediate alcohol dependence and its risk have not yet been fully understood, as there are only a few ERP/ERO studies that have examined reward processing in alcoholics and their high risk offspring. In 2008, using the Balloon Analogue Risk Task (BART), Fein and Chang [24] reported smaller FRN in treatment-naive alcoholics from families densely affected with alcohol problems. Using a monetary gambling task, our group

reported that alcoholic subjects showed smaller outcome related ERP components (ORN/N2 and ORN/P3) [25] as well as decreased theta power during reward processing [49] compared to controls. During reward processing, alcoholics were also found to manifest increased impulsivity and negative correlations between impulsiveness and P3 amplitude [25] as well as between impulsiveness and theta power [49]. Recently, we conducted an ERP study in adolescents and young adult offspring from alcoholic families (HR, high risk to develop alcoholism who had at least one parent with alcohol dependence) and found that adolescent females and young adult males showed reduced P3 amplitudes during the loss conditions [67] but no difference in the gain conditions compared to low risk offspring from control families (LR) who had no parental history of alcoholism. It is surprising that very few studies have examined the reward related ERP components (ORN and ORP) as well as the theta EROs underlying these components in the realm of alcoholism [24,25,49,67]. Further, reward related theta oscillations, a primarily constituent of these ERP components, have not yet been studied in high risk offspring of alcoholics, while this measure has been explored in normal subjects [14,30,39,43,44] and alcoholics [49] during reward processing.

The current study is the first to examine ERO theta power during reward processing in a high risk sample, and has used a large sample of adolescent and young adult HR offspring from high density alcoholism families in the Collaborative Study on the Genetics of Alcoholism (COGA). The present study is an extension of our previous work, and seeks to determine: (i) whether lower reward related ERO theta power and increased impulsivity observed in alcoholics [49] is also present in HR compared to LR subjects; and (ii) whether HR subjects, who manifested lower P3 amplitude during reward processing in our previous study [67], would also show decreased reward related ERO theta power underlying the P3 [68,69] wave while evaluating loss and gain. Specifically, the current study aims to address whether (i) deficits in the same measure (lower ERO theta power) that has been observed in alcoholics is also observed in HR subjects, and (ii) the same group (HR subjects) shows deficits in both measures (P3 and EROs) during reward processing. Although theta oscillatory activity during reward processing has been studied in healthy individuals [39,44,70] and in alcoholics [49], the present study is the first to examine event-related theta activity during reward processing in a monetary gambling task in subjects who are at high risk for alcoholism. Using the same approach as in our previous studies of reward processing [49,67], the present study also examined current source density (CSD), to analyze the cortical sources of the surface potentials [71] during theta EROs. The study has compared psychometrically assessed impulsivity as well as externalizing diagnoses, such as substance use disorders, conduct disorder (CD), antisocial personality disorder (ASPD), attention deficit hyperactivity disorder (ADHD), and oppositional defiant disorder (ODD), between the risk groups (i.e., HR and LR). We expected that HR compared to LR offspring would manifest lower ERO total theta power and decreased CSD activations in both loss and gain conditions, along with increased impulsivity scores and higher prevalence rates of externalizing disorders. Therefore, findings from the current study may further characterize ERO theta power during reward processing in individuals at risk and in addition to externalizing characteristics, including impulsivity, may serve as a potential marker for a predisposition to develop alcoholism and related disorders.

Methods

Ethics Statement

The experimental protocols were approved by Institutional Review Board (IRB) of each participating centers of COGA: University of Connecticut; Indiana University; University of Iowa; SUNY Downstate; Washington University in St. Louis; University of California at San Diego;

Rutgers University; University of Texas Health Science Center at San Antonio, Virginia Commonwealth University, Icahn School of Medicine at Mount Sinai, and Howard University. Data were collected from the first six of these eleven centers. All participants signed an IRB approved written consent form. Parents or legal guardians signed for their minor children. Consent was obtained by research personnel who had adequate training and competency in ethical guidelines and consent process. Study procedure, risks and benefits were explained to each participant and/or the parent/guardian before collecting data. It was also ascertained that participants were not disadvantaged in any way by not participating in the study.

Participants

The sample included 1821 adolescents and young adults (874 males and 947 females) between 12 to 25 years of age (see Table 1) and was derived from the prospective sample [72] of the COGA study [73,74]. The sample included offspring of the high-risk (multiple alcohol dependent adult family members) and comparison (community) families ascertained in previous phases of COGA. Participants are reassessed every two years with clinical, behavioral and neurophysiological assessments. Data from the six collection centers have been included in this study. Recruitment and assessment procedures have been described elsewhere [73,75–77], and are also available at this website: <https://zork5.wustl.edu/coganew/data/instruments.html>. Details regarding access to COGA data are available through the National Institute of Alcoholism and Abuse at <http://www.niaaa.nih.gov/research/major-initiatives/collaborative-studies-genetics-alcoholism-coga-study#Access>. COGA data are also available from the publically accessible dbGAP database at <http://www.ncbi.nlm.nih.gov/gap/?term=COGA> [IDs: phs000092.v1.p1, phs000125.v1.p1, and phs000763.v1.p1].

Subjects were instructed to refrain from using alcohol and substances for 5 days prior to EEG recording. Subjects were excluded from neurophysiological assessment if they had any of the following: (1) report of recent drug/alcohol use or a positive breath-analyzer test, (2) hepatic encephalopathy/cirrhosis of the liver, (3) history of head injury, seizures or neurosurgery, (4) uncorrected sensory deficits, (5) history/symptoms of psychoses, (6) self-reported positive test for human immunodeficiency virus, and/or (7) other acute/chronic medical illnesses that affect brain function. The HR group consisted of individuals from the COGA high density alcoholism families who had at least one parent with DSM-IV alcohol dependence, while the participants for the LR group consisted of individuals from the community families without any parental history of alcohol dependence. The current study is cross-sectional by design and involves data from the initial (first) assessment only. The groups were further subdivided based on gender and age group (12–15 and 16–25 years old) (see Table 1). These age ranges were adapted in order to maintain proportionally optimal sample size in each subgroup. Although unequal interval of age range in these groups was due to skewness in the sample,

Table 1. Number of participants and age (mean and SD) categorized by age group and gender across risk groups (HR and LR). Mean ages between LR and HR groups have been compared using t-tests.

Gender	Age Group	LR			HR			t-value	p
		N	Age		N	Age			
			Mean	SD		Mean	SD		
Male	12–15	67	13.34	1.28	319	13.64	1.20	-1.775	0.0737
Male	16–25	62	18.85	1.95	426	19.28	2.20	-1.475	0.1408
Female	12–15	97	13.48	1.18	334	13.67	1.24	-1.329	0.1845
Female	16–25	61	19.22	2.19	455	19.51	2.16	-0.979	0.3281

doi:10.1371/journal.pone.0142659.t001

with more subjects represented at younger ages, these age ranges provided statistical power to investigate differences in younger and older groups. The HR and LR groups did not differ in sample distribution in terms of mean age (see [Table 1](#)) and gender ($\chi^2 = 1.27; p = 0.2741$). [Table 2](#) shows prevalence rates of lifetime diagnoses for externalizing disorders for HR and LR groups in males and females. The prevalence rates were significantly higher in HR subjects compared to LR individuals in several diagnoses for each gender and in the combined sample.

Assessment Tools

The clinical and impulsivity data of the sample were collected with three COGA instruments: (1) Semi Structured Assessment for the Genetics of Alcoholism (SSAGA) [78] evaluated clinical diagnoses and symptoms; (2) Family History Assessment Module (FHAM) [79] assessed Axis I psychiatric disorders, including AUDs and related disorders, among relatives of the participants as assessed from other relatives; and (3) Barratt Impulsiveness Scale (BIS) [80] provided ratings of impulsivity in three categories viz., attentional, motor, and non-planning, as well as total scores. Cognitive/attentional impulsivity involves making quick/hasty decisions, motor impulsivity represents acting without thinking, and non-planning impulsivity indicates a lack of “futuring” or forethought [81].

Table 2. Prevalence rates in counts and percentage (in parentheses) for the diagnoses of externalizing disorders (EXT) in LR and HR groups for each gender and for total sample. Significance levels based on Chi-square tests (Pearson χ^2 or Likelihood Ratio) have been marked with asterisks (in HR columns). Empty cell (with a dash) means the count of zero.

Diagnoses (DSM-IV)	Male		Female		Total	
	LR	HR	LR	HR	LR	HR
Alcohol Dependence	2 (1.55)	20 (2.69)	1 (0.63)	28 (3.55)*	3 (1.05)	48 (3.13)*
Alcohol Abuse	7 (5.43)	92 (12.37)*	4 (2.53)	62 (7.86)**	11 (3.83)	154 (10.04)***
Tobacco Dependence	5 (3.88)	64 (8.60)*	2 (1.27)	62 (7.86)***	7 (2.44)	126 (8.21)***
Marijuana Dependence	6 (4.65)	100 (13.44)**	3 (1.90)	59 (7.48)**	9 (3.14)	159 (10.37)***
Marijuana Abuse	4 (3.10)	56 (7.53)*	1 (0.63)	33 (4.18)**	5 (1.74)	89 (5.80)***
Cocaine Dependence	-	7 (0.94)	-	7 (0.89)	-	14 (0.91)*
Cocaine Abuse	-	2 (0.27)	-	1 (0.13)	-	3 (0.20)
Stimulant Dependence	-	5 (0.67)	-	11 (1.39)*	-	16 (1.04)*
Stimulant Abuse	-	1 (0.13)	-	2 (0.25)	-	3 (0.20)
Sedative Dependence	-	1 (0.13)	-	3 (0.38)	-	4 (0.26)
Sedative Abuse	-	2 (0.27)	-	1 (0.13)	-	3 (0.20)
Opiate Dependence	-	1 (0.13)	-	5 (0.63)	-	6 (0.39)
Opiate Abuse	-	4 (0.54)	-	4 (0.51)	-	8 (0.52)
Other Drug Dependence	-	6 (0.81)	-	8 (1.01)	-	14 (0.91)*
Other Drug Abuse	-	2 (0.27)	-	4 (0.51)	-	6 (0.39)
ASPD	3 (2.33)	39 (5.24)	1 (0.63)	25 (3.17)	4 (1.39)	64 (4.17)
CD	5 (3.88)	80 (10.75)**	5 (3.16)	45 (5.70)	10 (3.48)	125 (8.15)**
ADHD	3 (2.33)	27 (3.63)	2 (1.27)	13 (1.65)	5 (1.74)	40 (2.61)
ODD	1 (0.78)	21 (2.82)	1 (0.63)	13 (1.65)	2 (0.70)	34 (2.22)*
Any EXT disorder	21 (16.28)	262 (35.22)***	16 (10.13)	203 (25.73)***	37 (12.89)	465 (30.33)***

*p < 0.05

**p < 0.01

***p < 0.001

doi:10.1371/journal.pone.0142659.t002

Monetary Gambling Task

The monetary gambling task (MGT) used in this study is illustrated in Fig 1. Each trial began with a choice stimulus (CS), with two numbers 10¢ (left box) and 50¢ (right box) displayed for 800 ms. The participants selected a bet of either 50¢ or 10¢, and received feedback of either loss or gain for the selected amount (outcome stimulus, OS). The task details have been described in our previous publications [14,25,41,49]. The inter-stimulus interval (ISI) between a CS and OS, and between an OS and next CS is 1500 ms. The task involved a total of 172 trials, each with one of four possible outcomes: Loss 50¢, Loss 10¢, Gain 50¢, and Gain 10¢. Irrespective of the overall amounts chosen during the task, the probability of loss and gain outcomes were 50% (i.e., the number of ‘red’ and ‘green’ outcomes were equal), although the participants were not aware of this information. However, since the subject has the option to freely select the amount during each trial, the relative probability for each of the four outcomes (+50, -50, +10, -10) ranged from 0 to 50%. For example, if a subject selects ‘50’ in all the trials, the probabilities

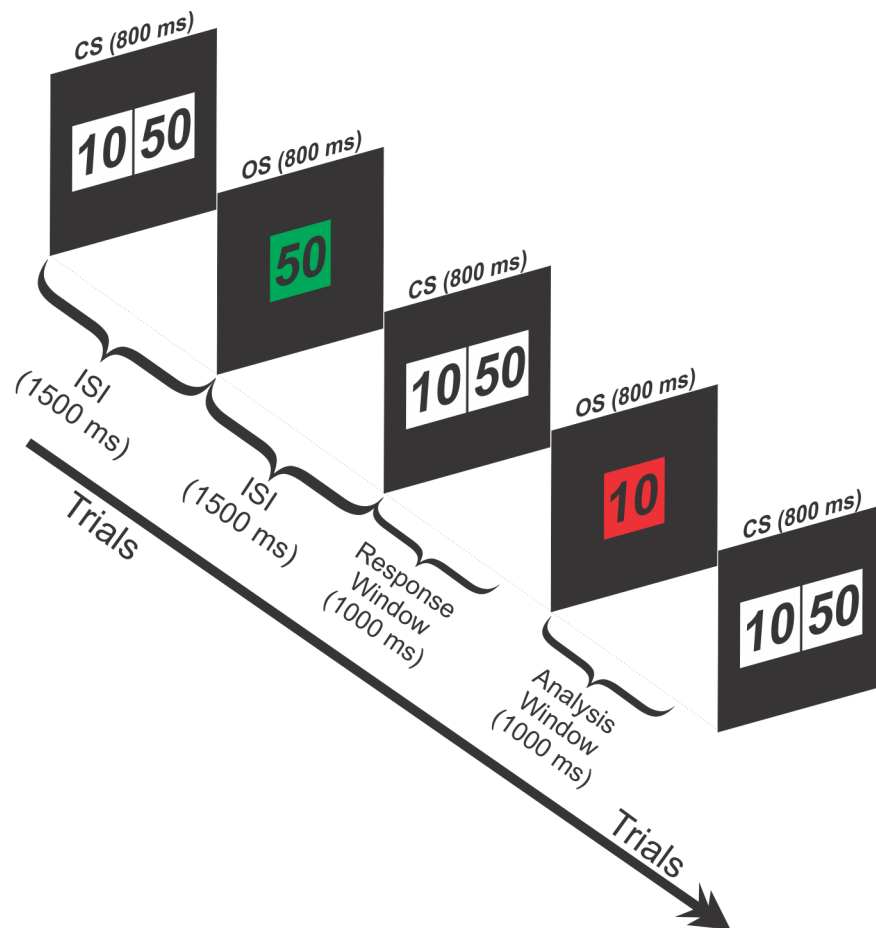


Fig 1. Schematic illustration of the Monetary Gambling Task (MGT). Each trial starts with a choice stimulus (CS) (white boxes) which lasts for 800 ms and displays two amounts (10¢ or 50¢). The participant selects one of the amounts with a corresponding button press. An outcome of either gain (green box) or loss (red box) for the selected amount is shown by the outcome stimulus (OS). A trial with a gain of 50¢ and the next trial with a loss of 10¢ are illustrated. The ISI between the CS and the OS is 1500 ms. Participants were required to respond to the OS within 1000 ms (i.e., response window) by selecting one of the two amounts. ERO analysis was performed on trial epochs of 1000 ms post-stimulus period after the onset of the OS (i.e., analysis window).

doi:10.1371/journal.pone.0142659.g001

will be 50%, 50%, 0%, and 0% for the outcomes of +50, -50, +10, -10, respectively. Trial epochs containing the outcome stimuli (1000 ms poststimulus) representing the feedback of either loss or gain for each trial (i.e., the epochs following colored frames in Fig 1) were used for ERO signal processing. A prestimulus interval of 200 ms prior to the OS was used for the ERP/ERO preprocessing and/or analyses. The trials were presented in two equal size blocks, and the subjects were given a feedback of the cumulative amount lost or gained at the end of each block. At the end of the experiment, participants were paid a constant amount (irrespective of their net loss or gain) for their participation.

EEG Data Acquisition and Preprocessing

Identical experimental procedures and EEG acquisition systems were used at all neurophysiology collection sites of COGA [73,74] with high inter-laboratory consistency in recordings [82–85]. Subjects were seated comfortably 1 m from a monitor in a dimly lit sound-attenuated RF-shielded booth (Industrial Acoustics, Inc., Bronx, NY, USA), and wore a 61-channel electrode cap (Electro-Cap International, Inc., Eaton, OH, USA) based on the Extended 10–20 Systems [86–88] (Fig 2), with a reference electrode at the tip of the nose and with a ground electrode at

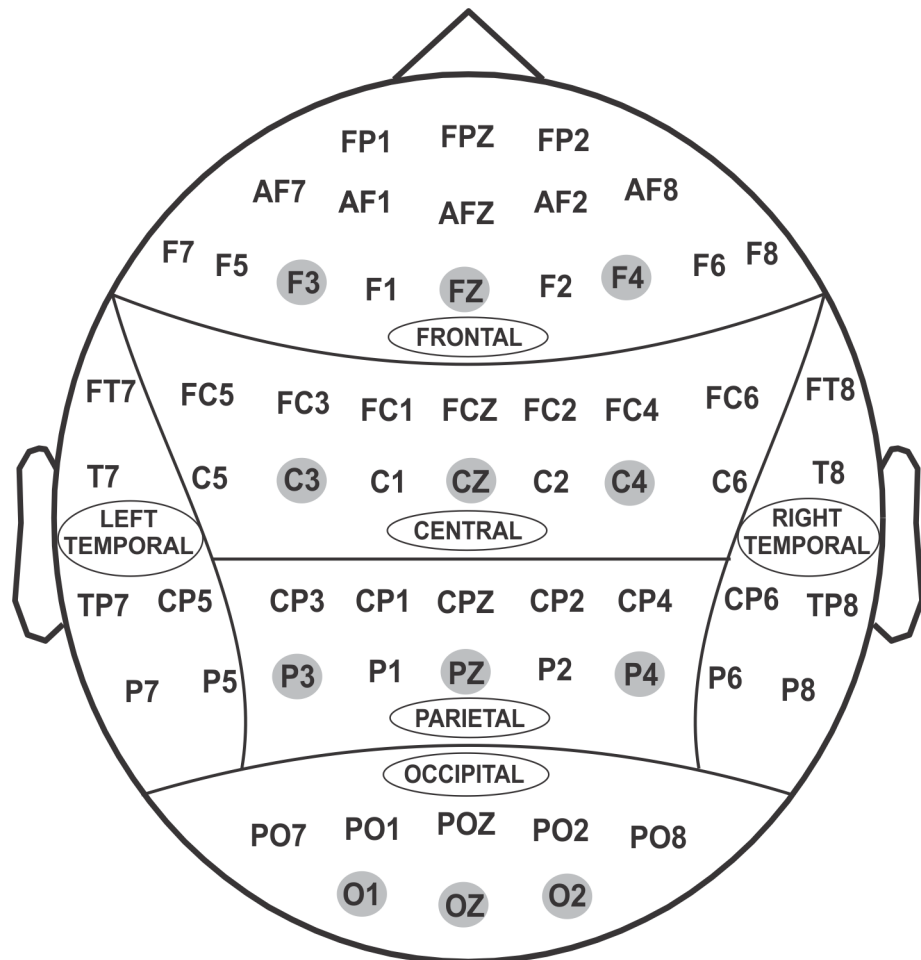


Fig 2. Sixty-one electrodes using extended 10–20 system as recorded in the current study. Twelve electrodes (F3, FZ, F4, C3, CZ, C4, P3, PZ, P4, O1, OZ, O2) representing frontal, central, parietal and occipital regions were selected for statistical analyses (shaded).

doi:10.1371/journal.pone.0142659.g002

the forehead. The electrooculogram (EOG) was recorded by a supraorbital vertical electrode and by a horizontal electrode on the external canthus of the left eye. Electrode impedances were maintained below 5 k Ω . Electrical activity was amplified 10,000 times using SynAmps2 amplifiers (Compumedics USA, Charlotte, NC) and was recorded continuously over a bandwidth of DC–100.0 Hz on a Neuroscan system (Versions 4.3–4.5; Compumedics USA, Charlotte, NC) at the sampling rate of 500 Hz. The entire EEG data was resampled offline to 256 Hz for the analyses. In this study, only ‘loss 50’ (representing the loss condition) and ‘gain 50’ (representing the gain condition) were analyzed, as majority of the subjects had more trials for the 50¢ than the 10¢ condition. The preprocessed trial epochs with waveforms exceeding $\pm 100 \mu\text{V}$ (about a third of total trials) were excluded from the analyses.

ERO Signal Processing using S-Transform

Time-frequency (TF) data were derived using the S-transform signal processing method, introduced by Stockwell et al. [89]. S-transform has been explained in our previous papers [14,49]. S-transform is deduced from short-time Fourier transform and continuous Wavelet transform, and has a better flexibility and utility in the processing of non-stationary and complex signals [90]. This method has been applied in several recent studies to analyze time-frequency signals of event-related oscillations [4,14,65,66,91–93]. The S-transform is considered to be a generalization of the Gabor transform [94] and an extension to the continuous wavelet transform. The S-transform generates a time-frequency representation (TFR) of a signal by integrating the signal at each time point with a series of windowed harmonics of various frequencies as follows:

$$ST(t, f) = \int_{-\infty}^{\infty} h(\tau) \frac{|f|}{\sqrt{2\pi}} e^{-\frac{(t-\tau)^2 f^2}{2}} e^{-i2\pi f \tau} d\tau$$

where $h(t)$ is the signal, f is frequency, τ is a translation parameter, the first exponential is the window function, and the second exponential is the harmonic function. The S-transform TFR is computed by shifting the window function down the signal in time by τ across a range of frequencies. The window function is Gaussian with $1/f^2$ variance and scales in width according to the examined frequency. This inverse dependence of the width of the Gaussian window with frequency provides the frequency-dependent resolution. The amplitude envelope of the complex-valued S-transform TFR is calculated by taking the absolute value $|ST(f, \tau)|$.

In the current study, total ERO theta power (which is a combination of both phase-locked and non-phase-locked activity) was computed from the outcome trials of loss and gain conditions. Since theta activity has been shown to underlie both N2 and P3 components of the ERP [14,69,95], theta power (3.5–7.5 Hz) within the TFR corresponding to 200–500 ms of post-stimulus time window (corresponding to N2 and P3 components of outcome-related ERPs) was processed (see, Kamarajan et al. [14] for detail). The filter setting to extract theta band included a 5th order Chebyshev type I filter (two-step cascade type) with ripple factor (ϵ) of 0.108 and ripple attenuation (Rp) of 0.05. Only the subjects who had at least fifteen artifact-free trials for each condition were included for further analyses.

CSD Mapping

Estimation of CSD was performed using surface Laplacians [96]. These methods are more sensitive than surface potentials to local brain sources [97] as they improve the spatial resolution of EEG [98]. The CSD methods have been widely employed in studying several neuropsychiatric disorders to understand the cortical sources underlying scalp potentials during resting state and during cognitive processing (for a review, see Kamarajan et al. [99]). The CSD maps were constructed from the Laplacian transformed data as described by Wang and Begleiter [100].

This method has also been applied in our earlier studies [41,101]. Since the recorded potential at each electrode represents the resultant contributions from several adjacent and distal sources, local sources cannot be clearly estimated [102]. The CSD transform acts as a spatial filter and provides an estimate of the local radial current density [96,102,103] and represents components of the primary neural activity in the scalp region [104]. In the present study, surface Laplacian was computed on the grand mean waveforms representing ERO total theta amplitude for each subgroup and for each task condition separately. The surface Laplacian was calculated at a scalp location based on the weighted average of the measured potentials at neighboring electrodes, where the electrodes closer to the index location get more weight. Topographic maps representing mean CSD potential within 300–500 ms ($\mu\text{V}/r^2$, where r = head radius in cm) were created. Z-scores were calculated for each scalp map by keeping the mean SL/CSD values of all 61 scalp electrodes as zero ('0') and the values above and below the mean were represented in SD units (z-scores). Then the z-score converted CSD maps were also plotted in order to compare topographic features regardless of the amplitude differences across the maps. Positivity or the source (red/orange) in the CSD maps represents increased ERO amplitude or synchronization, whereas negativity or the sink (blue/cyan) indicates decreased amplitude or desynchronization [105].

Statistical Analyses

Statistical analyses were performed using SPSS 21.0 (IBM Corporation, Armonk, NY). Log-transformed (natural log) ERO theta power (3.5–7.5 Hz) values derived from 12 electrodes representing 4 regions, viz., frontal (F3, FZ, F4), central (C3, CZ, C4), parietal (P3, PZ, P4), and occipital (O1, OZ, O2), were used in the analysis. A repeated measures analysis of variance (RM-ANOVA) of the general linear model (GLM) was used, involving Risk Group (HR and LR), Age Group (12–15 and 16–25 years), and Gender (male and female) as between-subjects factors, and Task condition (Loss and Gain) and Region (frontal, central, parietal, and occipital) as within-subjects factors. Although affected status (i.e., individuals with any externalizing diagnosis as shown in Table 2) was initially used as a covariate in the RM-ANOVA model, it was removed from the later analysis which is presented here, as the covariate showed neither a main effect nor any interaction effect with any factors in the model. The RM-ANOVA results were extracted from the multivariate test statistics (http://www-01.ibm.com/support/knowledgecenter/SSLVMB_20.0.0/com.ibm.spss.statistics.help/alg_glmrm_within-subjects.htm) as the ERO data for the within-subjects factors did not adhere to sphericity assumptions (i.e., the equality of the variances of the differences between levels of the repeated measures factor such as region). In other words, an appropriate alternative for the sphericity assumption while analyzing the EEG data is to use multivariate tests on the within-subjects effects within the GLM repeated measures model [106–108], as used in the current study. Further, Bonferroni adjusted pairwise comparisons within each significant main and interaction effects were analyzed using estimated marginal means (EMM) and standard errors (SE). The BIS scores between LR and HR groups were analyzed using one-way ANOVA. Chi-square tests (Pearson χ^2) were used to determine the significance levels for the prevalence rates of externalizing diagnoses between HR and LR groups. Likelihood ratio was used when any cell in the comparison had less than 5 observations. Pearson correlations were used to analyze the relationship between BIS scores and theta power.

Results

Theta Power

Main and interaction effects of theta power are listed in Table 3 (for all the effects of risk group as well as for the significant effects of gender and age group). The mean and SD values of

Table 3. Main and interaction effects of theta power as elicited by the GLM RM-ANOVA model. F-values and p-values (* $p < 0.05$, *** $p < 0.001$) are shown for all the effects of risk group as well as for the significant effects of gender and age group.

Effect	F	p
Risk Group	20.83	<0.0001***
Risk Group × Gender	1.79	0.1805
Risk Group × Age Group	0.00	0.9652
Risk Group × Gender × Age Group	0.88	0.3493
Risk Group × Condition	1.85	0.1737
Risk Group × Gender × Condition	0.98	0.3214
Risk Group × Age Group × Condition	0.00	0.9856
Risk Group × Gender × Age Group × Condition	0.07	0.7843
Risk Group × Region	3.75	0.0107*
Risk Group × Gender × Region	0.93	0.4237
Risk Group × Age Group × Region	2.27	0.0786
Risk Group × Gender × Age Group × Region	0.30	0.8263
Risk Group × Condition × Region	1.43	0.2322
Risk Group × Gender × Condition × Region	0.90	0.4426
Risk Group × Age Group × Condition × Region	1.60	0.1882
Risk Group × Gender × Age Group × Condition × Region	0.68	0.5618
Gender × Age Group	23.65	<0.0001***
Gender × Condition	14.93	0.0001***
Gender × Condition × Region	3.08	0.0264*
Age Group	163.81	<0.0001***
Age Group × Condition	13.34	0.0003***
Age Group × Region	12.21	<0.0001***
Condition	73.31	<0.0001***
Region	61.07	<0.0001***
Condition × Region	59.57	<0.0001***

doi:10.1371/journal.pone.0142659.t003

log-transformed theta power for all the factors and their levels have been provided in [S1 Table](#). Pairwise comparisons of the estimated marginal means between the levels of risk groups, gender, and age groups at each scalp region for the loss and gain conditions are illustrated in [Fig 3](#). The results of the RM-ANOVA for the between-subjects factors (i.e., risk group, gender, and age group) as well as for the within-subjects factors (i.e., condition, and scalp region) have been summarized below. While the EMM and SE (in parentheses) have been provided only for the significant effects, mean and SD for the total sample as well as for the subgroups have been provided in the [S1 Table](#).

Risk Group. As shown in [Table 3](#), the main effect of risk group was highly significant [$F = 20.83$; $p < 0.0001$], showing that HR subjects [2.96 (0.01)] manifested significantly lower theta power than their LR counterparts [3.10 (0.03)]. Significant risk group × region interaction effect revealed that the difference between HR and LR subjects were significant in all four regions, and that the highest difference was observed in the parietal region [HR = 3.01 (0.01); LR = 3.18 (0.03); $F = 22.92$; $p < 0.0001$], followed by central [HR = 2.96 (0.01); LR = 3.12 (0.03); $F = 21.92$; $p < 0.0001$], occipital [HR = 2.95 (0.01); LR = 3.10 (0.03); $F = 20.10$; $p < 0.0001$], and frontal regions [HR = 2.92 (0.01); LR = 3.01 (0.03); $F = 7.53$; $p = 0.0061$]. Due to the highly significant main effect of risk group, most of the interaction effects of risk group were not significant (see [Table 3](#)) but most of the comparisons (HR vs. LR) within each of these interaction effects were significant (HR < LR) as shown in [Table 4](#).

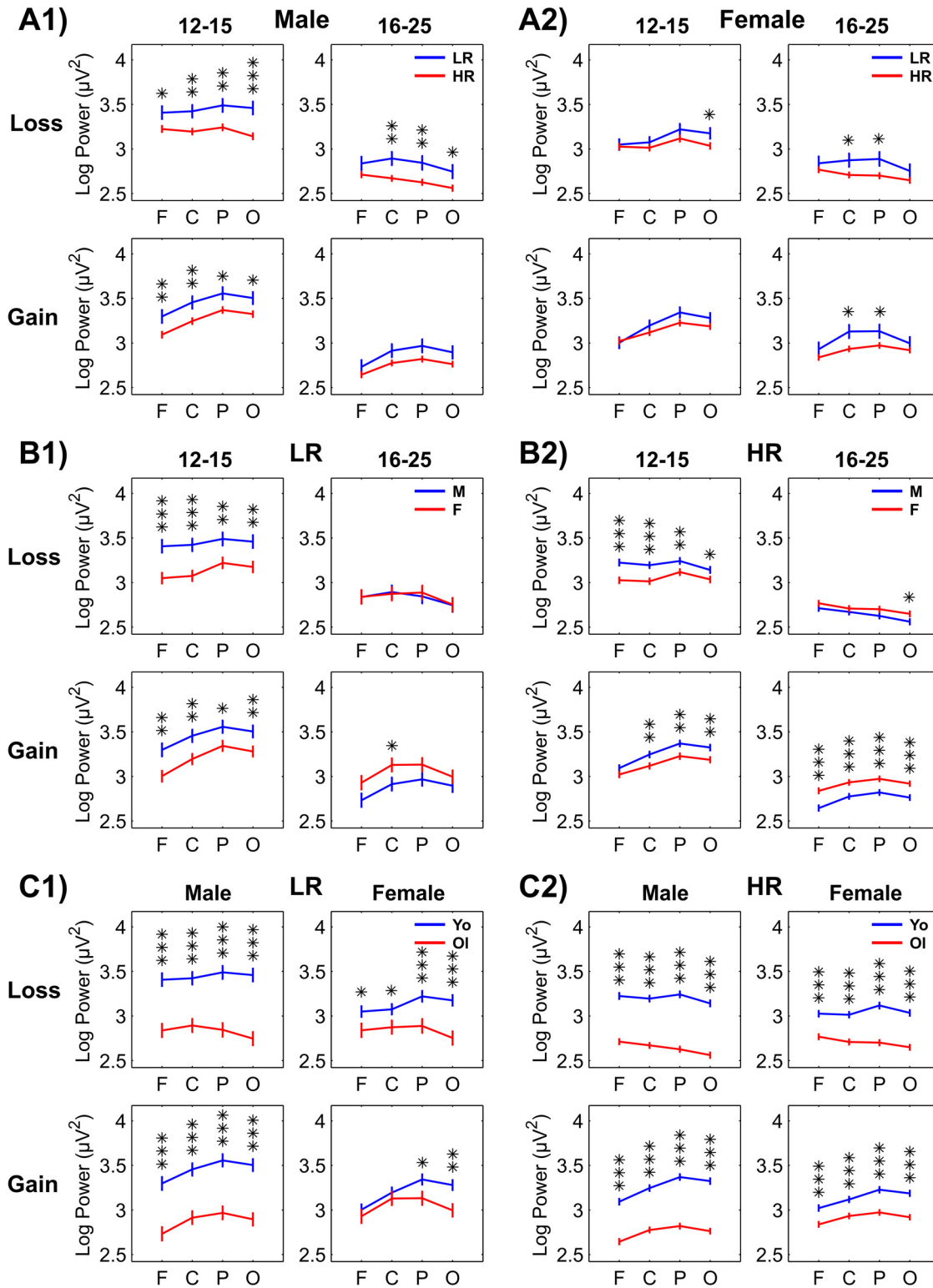


Fig 3. Multiple comparisons of log-transformed theta power across risk group, gender and age group. Estimated marginal means and standard error (± 1 SE) of pairwise comparisons between the risk groups (panel-sets A1 and A2), gender (panel-sets B1 and B2), and age groups (panel-sets C1 and C2) in loss and gain conditions have been plotted for each scalp region (F, frontal; C, central; P, parietal; and O, occipital). Bonferroni adjusted level of significance for each comparison is shown in asterisks (** $p < 0.01$, *** $p < 0.001$). [M = Male; F = Female; Yo = Younger Age Group (12–15 years); OI = Older Age Group (16–25 years)].

doi:10.1371/journal.pone.0142659.g003

Table 4. Comparisons between LR and HR groups within the interaction effects of risk group. Significant comparisons (HR < LR) have been marked with asterisks (Sig.: **p* < 0.05, ***p* < 0.01, ****p* < 0.001), while the dash sign (-) indicates 'not significant'. Unrelated factors (cells) have been left blank. [Regions: F = Frontal, C = Central, P = Parietal, O = Occipital; Factors: RG = Risk Group, AG = Age Group, Gen = Gender, Con = Condition].

Effect	Between-subjects factor		Cond (Sig.)		Reg (Sig.)			
	Group (Cond)	Sig.	Loss	Gain	F	C	P	O
RG × Gen	Male	***						
RG × Gen	Female	*						
RG × AG	Younger	***						
RG × AG	Older	**						
RG × Gen × AG	Younger Male	***						
RG × Gen × AG	Older Male	*						
RG × Gen × AG	Younger Female	-						
RG × Gen × AG	Older Female	*						
RG × Cond			***	***				
RG × Gen × Cond	Male		***	**				
RG × Gen × Cond	Female		*	*				
RG × AG × Cond	Younger		***	**				
RG × AG × Cond	Older		**	*				
RG × Gen × AG × Cond	Younger Male		***	**				
RG × Gen × AG × Cond	Older Male		**	-				
RG × Gen × AG × Cond	Younger Female		-	-				
RG × Gen × AG × Cond	Older Female		-	-				
RG × Reg					**	***	***	***
RG × Gen × Reg	Male				**	***	***	***
RG × Gen × Reg	Female				-	**	**	*
RG × AG × Reg	Younger				*	**	***	***
RG × AG × Reg	Older				-	***	***	*
RG × Gen × AG × Reg	Younger Male				**	**	**	***
RG × Gen × AG × Reg	Older Male				-	*	*	*
RG × Gen × AG × Reg	Younger Female				-	-	-	-
RG × Gen × AG × Reg	Older Female				-	*	*	-
RG × Cond × Reg	Loss				**	***	***	***
RG × Cond × Reg	Gain				*	***	***	***
RG × Gen × Cond × Reg	Male (Loss)				**	***	***	***
RG × Gen × Cond × Reg	Male (Gain)				**	**	**	**
RG × Gen × Cond × Reg	Female (Loss)				-	*	**	*
RG × Gen × Cond × Reg	Female (Gain)				-	**	**	*
RG × AG × Cond × Reg	Younger (Loss)				*	**	***	***
RG × AG × Cond × Reg	Younger (Gain)				-	**	**	**
RG × AG × Cond × Reg	Older (Loss)				-	***	***	*
RG × AG × Cond × Reg	Older (Gain)				-	**	**	*
RG × Gen × AG × Cond × Reg	Younger Male (Loss)				*	**	**	***
RG × Gen × AG × Cond × Reg	Younger Male (Gain)				**	**	*	*
RG × Gen × AG × Cond × Reg	Older Male (Loss)				-	**	**	*
RG × Gen × AG × Cond × Reg	Older Male (Gain)				-	-	-	-
RG × Gen × AG × Cond × Reg	Younger Female (Loss)				-	-	-	*
RG × Gen × AG × Cond × Reg	Younger Female (Gain)				-	-	-	-
RG × Gen × AG × Cond × Reg	Older Female (Loss)				-	*	*	-
RG × Gen × AG × Cond × Reg	Older Female (Gain)				-	*	*	-

doi:10.1371/journal.pone.0142659.t004

[Fig 3](#) illustrates all possible pairwise comparisons (Bonferroni adjusted) between HR and LR groups. It is clearly shown that the HR group has manifested significantly lower theta power than the LR group in both males and females, while the differences were more robust in males, especially in younger males [panel sets A1 and A2]. Specific differences were observed in: (i) younger males during both loss and gain conditions in all scalp regions ($p < 0.001$); (ii) older males during the loss condition at central, parietal, and occipital regions ($p < 0.001$); (iii) younger females during the loss condition only at occipital regions ($p < 0.05$); and (iv) older females during loss and gain conditions at central and parietal regions ($p < 0.05$).

Gender. A significant gender \times age group interaction ([Table 3](#)) suggested that younger males [3.34 (0.03)] had highly significant increases in theta power [$F = 23.62$; $p < 0.0001$] compared to younger females [3.13 (0.03)], while older females [2.88 (0.03)], on the other hand, showed higher theta power [$F = 4.63$; $p = 0.0315$] than older males [2.78 (0.03)]. A significant gender \times condition interaction revealed that a significant gender difference [$F = 8.34$; $p = 0.0039$] was observed only in the loss condition, where males [3.03 (0.03)] showed higher theta power than females [2.93 (0.02)]. Gender \times condition \times region interaction effect revealed that males had higher theta power than females only during the loss condition at frontal [male = 3.05 (0.03); female = 2.92 (0.03); $F = 10.73$; $p = 0.0011$] and central regions [male = 3.05 (0.03); female = 2.92 (0.03); $F = 11.38$; $p = 0.0008$]. Further, this 3-way interaction suggested that males showed higher theta power during loss compared to gain (loss > gain) in frontal regions [loss = 3.05 (0.03); gain = 2.94 (0.03); $F = 21.04$; $p < 0.0001$] and an opposite pattern (gain > loss) in central [loss = 3.05 (0.03); gain = 3.10 (0.03); $F = 6.00$; $p = 0.0144$], parietal [loss = 3.05 (0.03); gain = 3.18 (0.03); $F = 38.42$; $p < 0.0001$], and occipital region [loss = 2.98 (0.03); gain = 3.12 (0.03); $F = 53.43$; $p < 0.0001$]. On the other hand, the same 3-way interaction revealed that females showed significantly more theta power for gain than for loss (gain > loss) in central [loss = 2.92 (0.03); gain = 3.10 (0.03); $F = 77.87$; $p < 0.0001$], parietal [loss = 2.98 (0.03); gain = 3.17 (0.03); $F = 94.52$; $p < 0.0001$], and occipital regions [loss = 2.90 (0.03); gain = 3.10 (0.02); $F = 108.93$; $p < 0.0001$]. Pairwise comparison across gender (male vs. female) shown in [Fig 3](#) [panel sets B1 and B2] revealed more specific findings. Younger males (both HR and LR groups) displayed significant increases in theta power compared to younger females [left column of panel sets B1 and B2]. On the other hand, older females, especially the HR females during the gain condition, exhibited significantly increased theta power compared to their male counterparts [right column of panel set B2].

Age Group. Main effect of age group, as shown in [Table 3](#), indicated that younger subjects [3.24 (0.02)] displayed significantly higher theta power [$F = 163.81$; $p < 0.0001$] than older subjects [2.83 (0.02)] in general, and in all or most of the comparisons within the subgroups (see [Fig 3](#), panel sets C1 and C2). Age group \times condition effect showed that the younger group displayed significantly higher theta power during loss [younger = 3.21 (0.02); older = 2.76 (0.03); $F = 173.85$; $p < 0.0001$] as well as during the gain condition [younger = 3.26 (0.02); older = 2.90 (0.03); $F = 117.33$; $p < 0.0001$]. The same interaction effect also revealed that significant condition differences (gain > loss) were more robust in the older age group [$F = 68.21$; $p < 0.0001$] than in the younger group [$F = 13.30$; $p = 0.0003$]. On the other hand, age group \times region interaction effect showed that while the difference in theta power between the younger and the older age group was significant in all four regions (younger > older), the highest age difference was observed in the occipital region [younger = 3.26 (0.02); older = 2.79 (0.03); $F = 194.06$; $p < 0.0001$], followed by parietal [younger = 3.32 (0.02); older = 2.87 (0.03); $F = 160.56$; $p < 0.0001$], central [younger = 3.22 (0.02); older = 2.86 (0.03); $F = 103.91$; $p < 0.0001$], and frontal region [younger = 3.14 (0.02); older = 2.79 (0.03); $F = 100.49$; $p < 0.0001$]. The pairwise comparisons, shown in [Fig 3](#) [panel sets C1 and C2], revealed that age differences in theta power were highly significant (younger > older) within each gender

and risk group during the loss as well as the gain condition, and that these differences were more robust in males compared to females.

Within-Subjects Factors. Main effect of condition showed that the gain condition [3.08 (0.02)] showed significantly higher theta power [$F = 73.31$; $p < 0.0001$] than the loss condition [2.98 (0.02)] (Table 3). The region main effect revealed that theta power significantly [$F = 61.07$; $p < 0.0001$] varied across the regions: parietal [3.10 (0.02)] > central [3.04 (0.02)] > occipital [3.02 (0.02)] > frontal region [2.96 (0.02)]. Further, condition \times region interaction indicated that the loss condition had higher theta power than the gain condition only in the frontal region [loss = 2.98 (0.02); gain = 2.95 (0.02); $F = 6.03$; $p = 0.0142$], while the reverse (gain > loss) was true for central [loss = 2.98 (0.02); gain = 3.10 (0.02); $F = 61.11$; $p < 0.0001$], parietal [loss = 3.02; gain = 3.17; $F = 124.72$; $p < 0.0001$], and occipital regions [loss = 2.94; gain = 3.11; $F = 155.45$; $p < 0.0001$].

Fig 4 shows time-frequency plots and topographic head maps for the younger and older male subjects. Topographically, theta power during loss condition showed an anterior focus while the gain condition had a posterior focus in younger subjects and a wider activation involving frontal-central-parietal regions was seen in older subjects. HR subjects showed significantly lower theta power than LR individuals. Overall, the older subjects have shown lower theta power compared to their younger counterparts in each subgroup.

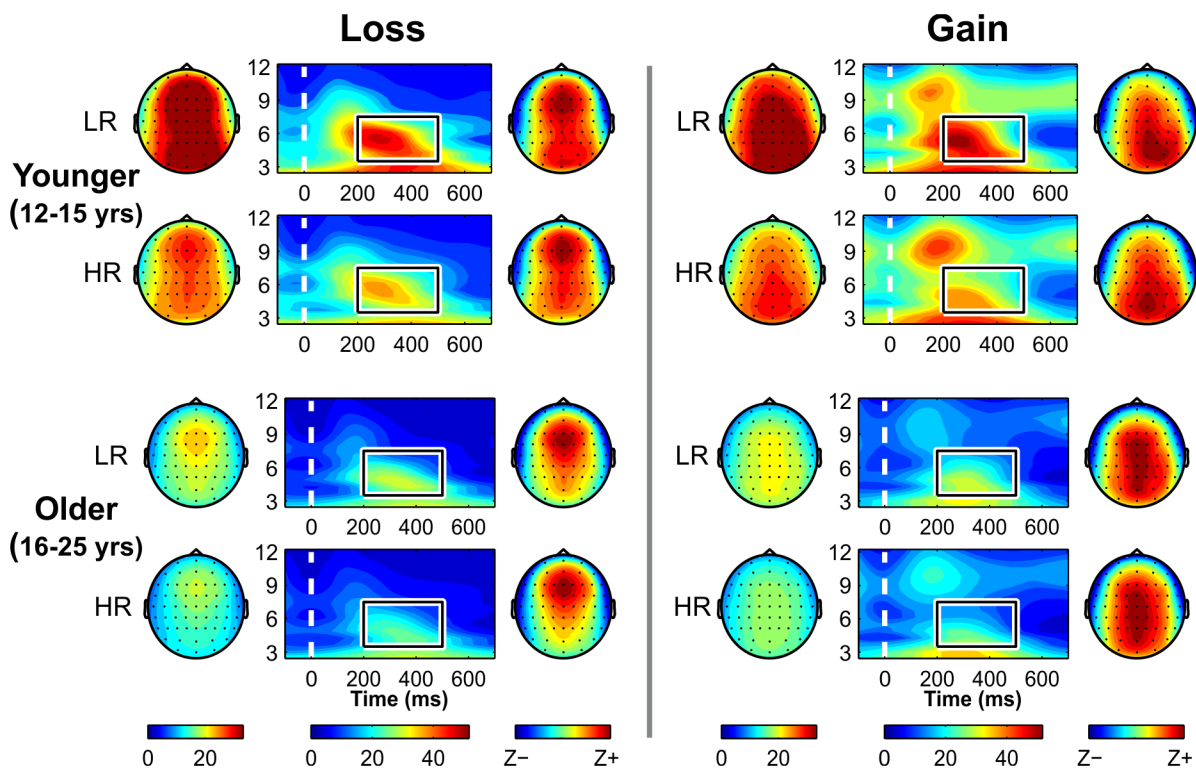


Fig 4. Time-frequency (TF) plots of theta power. TF plots during loss at FZ electrode (middle panels on the left side) and gain conditions at PZ electrode (middle panels on the right side) for the younger (top two rows) and older male subjects (bottom two rows) are shown. Theta power differences between HR and LR subjects (HR < LR) were more robust in males (as shown in these plots) compared to females (not shown). In these panels, each TF plot is flanked by a topographic map of absolute values on the left side and z-scored values on the right side. The rectangle box inside the TF plots represents the Time Frequency Region of Interest (TFROI) of ERO theta band (3.5–7.5 Hz, y-axis) within 200–500 ms (x-axis). Loss condition with anterior maximum and gain condition with posterior focus are shown. Older groups displays more anterior activity than younger groups (“frontalization”).

doi:10.1371/journal.pone.0142659.g004

CSD Topography

CSD topographic maps of ERO theta activity are shown in Fig 5. During the loss condition, bilateral temporal sources in younger HR males were relatively weaker compared to their LR counterparts, while there was no prominent difference between risk groups in younger females. During gain condition, younger HR males showed lower CSD potential in bilateral sources as well as in frontal sinks, while females did not show any marked differences. Among the older groups, both male and female HR subjects displayed weaker frontal sinks than their LR counterparts during loss and gain conditions.

Externalizing Disorders and BIS Impulsivity

As shown in Table 2, prevalence rates were significantly higher in HR compared to LR subjects in several diagnoses (especially for substances such as alcohol, tobacco, marijuana use, as well as for CD and any EXT diagnosis) in males and/or females and in the combined sample. BIS impulsivity scores between LR and HR groups across gender and age groups are shown in Fig 6. Overall, the HR subjects showed significantly increased impulsivity on each of the subscales of BIS (attentional, motor, and non-planning) as well as in total impulsivity in each subgroup. Specifically, younger HR males exhibited significantly higher impulsivity in all subscales and total score than the LR counterparts. On the other hand, older HR males showed higher impulsivity in motor and total score compared to the LR subjects. Further, all BIS scores were significantly higher in younger HR females compared to the LR subjects. Finally, compared to their

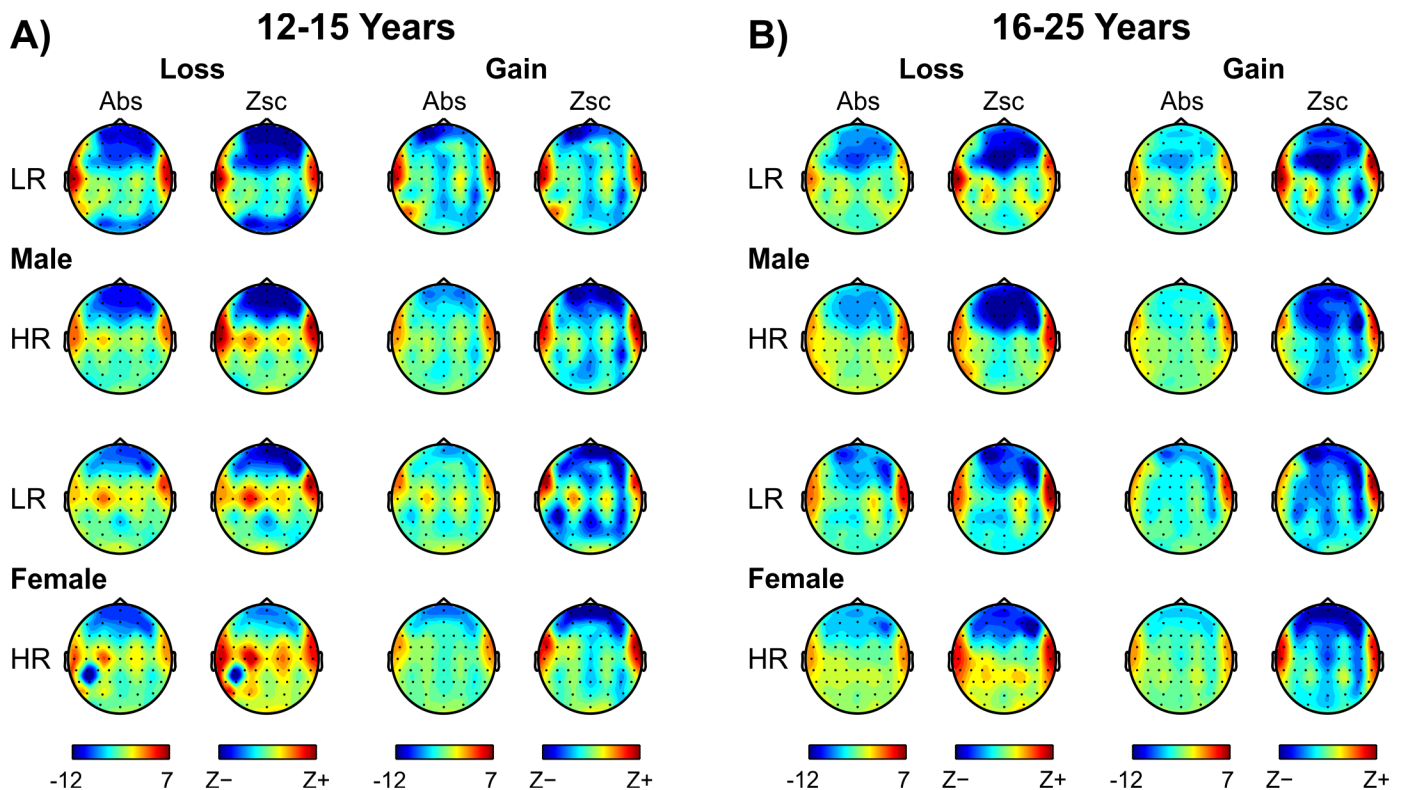


Fig 5. Topographic maps of ERO theta activity. The maps illustrate absolute (Abs) and Z-scored (Zsc) CSD potentials across risk groups for the loss (left columns of panelset A) and gain condition (right columns of panelset B) in the younger (panelset A) and older group (panelset B). Uniform color scales for the absolute maps ($\mu\text{V}/\text{cm}^2$) and for the Z-scored maps (from minimum to maximum) are shown at the bottom.

doi:10.1371/journal.pone.0142659.g005

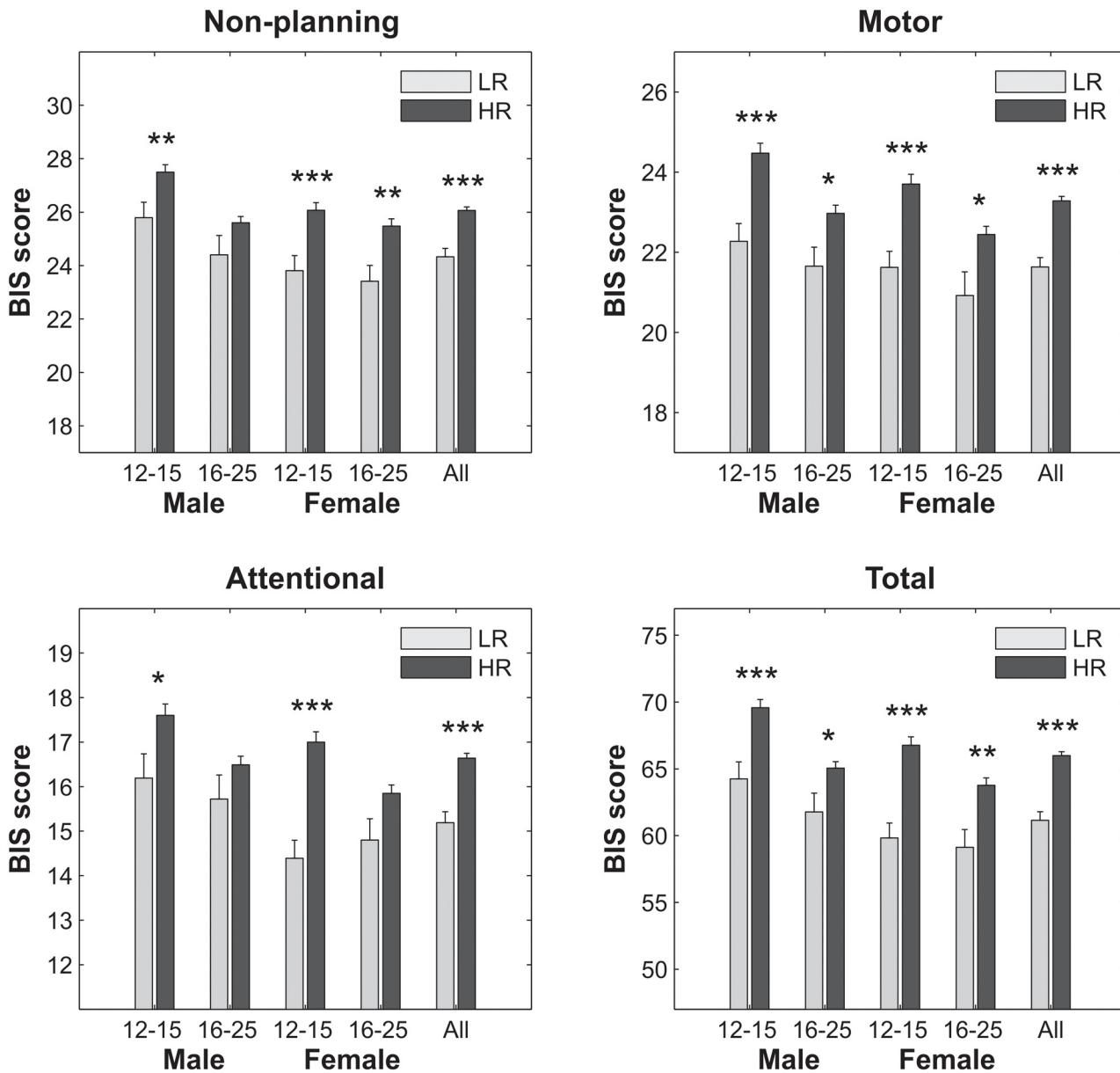


Fig 6. Comparison of impulsivity scores between LR and HR across subgroups. The mean and standard error (SE) of the BIS scores have been plotted. The error bars represent 1 SE. The significance levels have been marked with asterisks (* $p < 0.05$; ** $p < 0.01$; *** $p < 0.001$).

doi:10.1371/journal.pone.0142659.g006

LR counterparts, older HR females showed significantly increased BIS scores for non-planning, motor and total impulsivity. However, correlations between BIS impulsivity scores and theta power were not significant and had very small 'r' values (ranging between 0.005 and 0.056).

Discussion

The major objective of the current study was to examine neurocognitive deficits during reward processing as measured by ERO theta power in HR offspring from families densely affected by alcoholism compared to LR subjects from comparison (community) families. Theta power,

CSD, and behavioral impulsivity were compared between the risk groups in the context of gender and age group. The major findings of the present study are as follows:

1. *ERO theta between risk groups*: HR subjects showed significantly lower theta power than LR subjects ($HR < LR$), and the differences were more robust among males;
2. *CSD between risk groups*: Differences in CSD topography ($HR < LR$) were also observed in HR subjects, especially in males, compared to their LR counterparts;
3. *ERO theta between age groups*: Younger subjects manifested significantly higher theta power than their older counterparts consistently across groups and conditions. Further, older subjects displayed relatively more theta activity at anterior sites than younger subjects (“frontalization”) during the loss condition;
4. *ERO theta between genders*: Males displayed increased theta power than females during younger ages (during loss and gain), while females manifested augmented theta power than males (during the gain condition).;
5. *BIS scores between risk groups*: HR subjects as a whole and in several subgroups showed increased impulsivity scores compared to their LR counterparts (17 out of 20 comparisons were significant).

Lower Theta Power and CSD in HR Subjects

The major finding of the present study is that HR subjects displayed lower theta power compared to LR participants across several comparisons (see Figs 3 and 4 and Table 4). Specifically, as shown in Fig 3, compared to the LR subjects, the HR subjects from younger male and older female subgroups showed lower theta power during loss and gain conditions, while the older HR males and younger HR females showed a decrease only during the loss condition. Further, these differences between the risk groups were more robustly displayed by male compared to female subjects. To our knowledge, this is the first study that has examined reward related ERO theta in HR subjects during a monetary gambling paradigm. This finding of lower ERO theta power during reward processing in HR subjects can be viewed in the light of previous reward related ERP studies which have reported lower amplitudes in N2 during Balloon Analogue Risk Task [24] and in P3 during a visual discrimination task [26]. As the time range of theta power (200–500 ms) used in the present study includes the timing of both N2 and P3 components, and since theta activity is considered to be a major constituent of N2 and P3 [14,69,95], our finding of lower theta power in HR subjects is in line with previous ERP findings during reward processing in similar sample of at risk groups [67]. Although ERO measures, which underlie the P3 wave, have been shown to provide additional information to that offered by conventional ERP amplitude measures [4], comparison of both measures was beyond the scope of the current study.

On the one hand, lower ERO theta power during reward processing observed in this study is suggestive of a dysfunctional reward system in HR subjects. On the other hand, since ERO theta activity has been shown to be related to a variety of behavioral, cognitive, and motivational or emotional aspects of human information processing including reward processing [6,7,11,14,30,39,59,60,109–122], and since HR subjects have been shown to have lower ERO power during other cognitive tasks, such as Go/NoGo [65] and visual oddball [66], our finding of lower theta activation in HR subjects may also indicate a generic cognitive deficit in these ‘at risk’ individuals. However, growing evidence for specific dysfunction in reward processing in HR subjects has been demonstrated by electrophysiological [24,26,67] as well as fMRI studies

[123,124]. Since the HR subjects showed lower theta power during both loss and gain conditions, it is reasonable to assume that these 'at risk' individuals may have difficulty in evaluating the both positive and negative outcomes. Therefore, this finding may indicate blunted monetary outcome salience or deficient neural reward sensitivity in these subjects. This deficient processing could also be due to general "cortical insufficiency", a concept initially proposed in developmental dyslexia to explain a deficient processing at specific cortical regions (cf. [125]). In addition, similar to alcoholics, who showed weaker CSD activation during reward processing [49], the findings of the present study demonstrate weaker sources and sinks in HR subjects during reward processing in frontal and temporal regions (Fig 5). As shown by the structural and functional MRI studies, it is possible that brain circuitry underlying reward and emotional processing [126–128] as well as the integrity of white matter pathways are altered in individuals with positive family history for alcoholism [129,130]. Pre-existing cognitive deficits in high risk subjects are also evident from the neuropsychological findings showing compromised executive functioning in these subjects [131–133]. Therefore, it is reasonable to assume that asynchronous (delayed) maturation of prefrontal-limbic circuitry may be involved in the predisposition to develop substance use and related disorders in high risk adolescents and young adults (for a review, see Bava and Tapert [134]).

Gender Differences in Theta Power

It was found that ERO theta power between HR and LR subjects was statistically significant, and this difference was more robust in males compared to females (Fig 3, Panels A1 and A2). This gender-specific neurophysiological finding in HR subjects is supported by the P3 studies in the literature. For instance, smaller P3 amplitudes in high risk subjects has been reported more often in males [26,135–144] than in females [145,146]. Further, P3 reduction has been shown to be more robust in high risk males than in females (e.g., [147,148]). On the other hand, there are only a few ERO studies on high risk subjects to compare our findings, and gender effect in these studies were either not analyzed [65] or not to be found significant [66]. Nevertheless, it is well-known that the incidence of alcoholism is higher in males than in females, with reports in the United States indicating that both life time and 1-year prevalence rates for alcohol abuse and dependence were more than 2 times higher for males compared to the females [149]. Our finding implicating HR males as biologically more vulnerable compared to the HR females may be partially explained by gender differences in the heritability of alcohol problems [150] as well as in the patterns of transmission of alcoholism between family members [151].

Another gender related finding was that while males produced relatively more theta power (male > female) at younger ages (during both loss and gain), the reverse pattern (female > male) was observed in the older age group (more apparent during the gain condition). (Fig 3, Panels B1 and B2). Similar to this finding, Chorlian et al. [46] reported that both auditory and visual theta EROs were relatively higher in 12–15 year males (than females) while theta power in females more steadily increased (than males) at/after 15 years of age until 25 years. Previous studies from our group have also found that adult females have higher P3 amplitude [152–154] and increased ERO delta and theta power compared to males in cognitive and emotional paradigms [155], including the gambling paradigm [14,41]. More studies on gender differences are needed to confirm our findings as the ERP/ERO studies showing gender differences across development are rare, although gender differences in ERO responses in different frequency bands to cognitive and emotional processing have been widely documented in adult samples [155–159]. As noted by Jausovec and Jausovec [158], gender differences in ERO during visual processing could be explained by evolutionary theories of human visuospatial sex

differences [160,161]. This observation could be further reinforced by the evidence for gender differences in anatomical and functional features of the human brain [162–165]. Further studies examining developmental trajectories of reward-related ERO theta power in adolescence and young adults of both genders may shed further light to explain our findings.

Theta Power between Age Groups

Our results show a significant and robust decrease of ERO theta power with age, presumably reflecting developmental changes in the neural mechanisms of outcome monitoring (Fig 3 Panels C1 and C2). This finding is in line with well-known developmental reduction of P3 amplitude [166,167] and resting EEG power [168–174]. In error monitoring paradigms, the error-related P3 amplitude (“error positivity”) decreased with age [175], in contrast to the error-related negativity (ERN) that showed a significant increase from 7 to 17 years of age [176]. Although there have been no reward related ERO findings reported between different age groups, Hammerer et al. [177] measured the FRN in children, adolescents, younger adults, and older adults, and found that the amplitude of the FRN after gains and losses decreased monotonically from childhood to old age. These developmental changes could be due to dopaminergic and prefrontal contributions to reward-based learning and outcome monitoring across development from childhood to old age [177,178], and may also reflect changes associated with the salience of reward information as well as the declining ability to monitor and control behavior across the life span [179]. In an fMRI task comparing age groups during reward processing, Bjork et al. [180] found that compared with young adults (22–28 years of age), adolescents (12–17 years of age) displayed less recruitment of the right ventral striatum and right-extended amygdala while anticipating responding to gains. Recent fMRI studies have further confirmed differences in reward processing mechanisms between adolescents and adults [181–183].

The current study also indicates topographic changes in ERO theta oscillations during reward processing in adolescent brain development (see Panels C1 and C2 of Figs 3 and 4) comparing adolescent to young adult subjects. Although both older and younger groups manifested anterior maxima of theta power for the loss condition and posterior maxima for the gain condition in line with our earlier study [49], the topography of theta activity in the current study showed increased anteriorization (and decreased posterior activity) during development from adolescence to young adulthood. Gasser et al. [184] studied topographic aspects of EEG development of normal children and adolescents from 6 to 17 years, and reported that the maturation of low frequencies (specifically, theta and alpha bands) started at posterior regions and terminated at anterior derivations with maturation. Further concurring with developmental ERO studies in the literature [52,58,185–188], our finding corroborated the phenomenon of a gradual shift towards anteriorized topography and greater frontal activation in theta activity (i.e., “frontalization”) [189,190], whereby the prefrontal cortex progressively matures and assumes greater control over neural processing from childhood through adolescence to adulthood by virtue of a posterior to anterior progression during brain development [191,192]. According to Gogtay et al. [191], higher-order association cortices (e.g., the prefrontal cortex), mature only after lower-order structures (e.g., somatosensory and visual cortices) in a parietal-to-frontal direction, and phylogenetically older brain areas (e.g., basal ganglia and the limbic system) mature earlier than newer ones (e.g., the prefrontal cortex). Frontalization has also been observed in resting EEG, which corresponds to grey matter development, showing relative power distributed as a function of age with posterior regions maturing earlier than anterior regions (cf. Segalowitz et al. [193]). Specifically, theta-alpha maturation of resting EEG occurs first in occipital regions and then progresses gradually to frontal regions [170,172,194]. These

electrophysiological and neuroimaging studies support our finding of more anteriorized theta activation in older subjects compared to the younger group.

Impulsivity, Externalizing Disorders, Brain Development and Risk for Alcoholism

The HR subjects in general showed increased impulsivity on all subscales and total score of the BIS compared to the LR group, although subgroup-specific findings (i.e., age group and gender related) were also present (Fig 6). Studies have reported higher impulsivity scores and increased prevalence of externalizing disorders in general, and in particular substance use disorders [195–198]. It is also interesting to observe that while younger subjects of both genders showed significant differences between risk groups on all subscales of the BIS, older females displayed significant differences in nonplanning and motor impulsivity, while the older males were significantly different only for motor impulsivity. Similar to our findings, age and gender differences in impulsivity have been reported in the literature [199,200]. It has also been reported that the association between gender and risk for alcohol problems may be mediated by impulsivity [200]. Further, etiological connections between impulsivity and alcoholism and/or other SUDs have also been proposed (for reviews, see [201–203]). Consistent with this view, the current study has also found that the prevalence rate of externalizing disorders was significantly higher in the HR compared to the LR group (Table 2). Importantly, the prevalence rates of externalizing disorders in subjects with family history of alcoholism are higher than normal population levels [76,204,205].

Impulsivity involves actions and tendencies that are poorly conceived, premature, unduly risky and often inappropriate in a given context [206], and by extension is related to hyper-sensitivity to immediate reward (delay discounting), the inability to inhibit pre-potent responses (response disinhibition), and risk taking [207]. Impulsivity includes deficits in attention, lack of reflection and/or insensitivity to consequences, all of which occur in addiction (cf. [208]). Evidence suggests that limitations in brain development during adolescence restrict the ability to control impulsivity and may lead to substance use and addiction [209]. Dysfunctional frontal executive functions have often been linked to impulsivity [208] and substance dependence [210]. According to de Wit [207], impulsivity is both a determinant and consequence of drug use. Further, causal connections linking impulsivity, brain development, and risk for SUDs and/or externalizing disorders have been proposed (for reviews, see [202,208,209]). Taken together, the findings of the present study lend support to these etiological propositions. In other words, each of our findings—decreased theta power reflecting possible cortical insufficiency during reward processing along with increased impulsivity and higher rate of externalizing disorders in HR subjects—may be inherently related to each other in causing and/or maintaining the vulnerability or risk status for alcoholism and other related disorders.

However, it should also be mentioned that correlations between ERO theta power and BIS impulsivity scores were not significant, although such a relationship has been well established in alcoholic subjects [49]. This suggests that neural mechanisms (or circuits) underlying reward processing on the one hand, and that of impulsivity on the other hand, may each be separately related (“parallel connections”) to risk status without influencing each other at relatively younger ages (HR sample) than in older age groups (alcoholic sample). Another possibility is that only those with significant correlations between (and thereby interaction across) these two systems related to reward theta EROs and impulsivity may develop alcohol dependence, although we do not have any evidence in the current study to support this assertion. In a previous study in alcoholics, we found a significant correlation between theta ERO during reward processing and impulsivity (BIS) [49]. This lack of correlation between theta ERO and

impulsivity in the current study may be attributable to the differences in brain maturation and reward processing mechanisms between adult alcoholics and the relatively younger HR subjects [181,182]. Geier and Luna [211] report that adolescents relative to adults demonstrated decreased anticipatory processing and assessment of risk, but an increased consummatory response, leading to suboptimal representations of reward valence and decision-making. It is also possible that theta power during the feedback of loss/gain was not inherently related to impulsivity in the younger sample as used in our study, but rather theta power underlying (impulsive) decision making (which the current study has not analyzed) may be more directly related to impulsivity. Further, similar to our results, Bernat et al. [45] did not find a negative relation between ERO theta activity underlying reward processing and externalizing proneness in a sample of university undergraduates, while such a relationship has been reported for the error paradigm (ERN) in a similar sample [212]. Bernat et al. [45] explained that this seemingly inconsistent finding is perhaps due to a functional differences between the components, such that the ERN reflects endogenous representations while the feedback related P3 reflects exogenous cues. While reward theta EROs and risk status may have bidirectional influence with each other, externalizing disorders, which are known to have impulsivity as a core factor, were more prevalent in the HR subjects relative to the LR group, suggesting that both trait impulsivity measured by the BIS and the clinical manifestations of impulsivity (in the form of externalizing disorders) may also be intricately linked to the risk status associated with AUD. Although these explanations might hold true for the results of the current study, future studies may further explore this issue.

Limitations and Future Directions

The current study has successfully elicited deficient ERO theta power and CSD along with heightened impulsivity in HR subjects; yet caution is advised as there are some limitations: For instance, (i) the sample sizes for the LR groups are smaller than the HR groups; (ii) the trials involving both low and high bet amounts (10¢ and 50¢) have been combined for loss and gain conditions in order to maximize trial numbers and sample sizes; and (iii) other frequencies of EROs, which have not been analyzed (based on our previous studies), may yield additional information. Nevertheless, the findings of the present study may have considerable implications to further characterize neurocognitive dysfunction in alcoholism and risk status.

We suggest that future studies overcome the limitations of the present study to further advance the field, by attempting: (i) to examine the brain circuitries underlying reward/outcome processing in high risk individuals by using coherence/synchrony measures of electrophysiology and by using functional connectivity measures of neuroimaging; (ii) to examine the trajectories of reward-related ERO activity in HR subjects and to delineate longitudinal changes associated with ERO measures in HR subjects using multiple assessments over a period of time; (iii) to extend the study to examine EROs in several externalizing disorders (considered as a spectrum) along with alcohol use disorders; (iv) to include multiple measures of impulsivity and externalizing features in AUD and HR subjects to understand the complex interactions among these factors; (v) to examine, in addition to the outcome processing analyzed in the current study, the decision making aspect, which might prove to be more sensitive in younger HR samples; (vi) to compare the absolute ERO power with the baseline normalized power and to utilize possible complementary merits in both approaches, (vii) to study the effects of genetic variants on trajectories of electrophysiological phenotypes during adolescent and young adult development in high risk and low risk samples; and (viii) to parse out the influence of state (e.g., quantity/frequency of alcohol intake) and trait factors (e.g., impulsivity) in order to measure the distinct as well as the relative contributions of these factors.

Conclusions

The current study has examined ERO theta power underlying reward processing (i.e., during evaluation of loss/gain outcomes) as well as impulsivity features in HR offspring from high density alcoholism families of COGA and in LR individuals from community families. HR male subjects showed significantly lower ERO theta power and deficient CSD activity during reward processing compared to LR subjects. HR subjects also manifested increased impulsivity and higher rates of externalizing disorders than LR subjects. This lower ERO theta activity during reward processing in HR may reflect neurocognitive deficits that may underlie heightened impulsivity, and increased rates of externalizing disorders, that are inherently related to vulnerability for SUDs. It is suggested that ERO theta power during reward processing may be a useful endophenotype in predicting risk for developing alcoholism and related disorders, and studies are underway to measure the effects of genotypes and phenotypes as well as their interaction in causing specific clinical outcomes.

Supporting Information

S1 Table. Mean (M) and standard deviation (SD) of log-transformed ERO theta power values stratified for risk group, gender, age group, task condition, and scalp region.

(DOCX)

Acknowledgments

The Collaborative Study on the Genetics of Alcoholism (COGA), Principal Investigators B. Porjesz, V. Hesselbrock, H. Edenberg, L. Bierut, includes eleven different centers: University of Connecticut (V. Hesselbrock); Indiana University (H.J. Edenberg, J. Nurnberger Jr., T. Foroud); University of Iowa (S. Kuperman, J. Kramer); SUNY Downstate (B. Porjesz); Washington University in St. Louis (L. Bierut, J. Rice, K. Bucholz, A. Agrawal); University of California at San Diego (M. Schuckit); Rutgers University (J. Tischfield, A. Brooks); University of Texas Health Science Center at San Antonio (L. Almasy), Virginia Commonwealth University (D. Dick), Icahn School of Medicine at Mount Sinai (A. Goate), and Howard University (R. Taylor). Other COGA collaborators include: L. Bauer (University of Connecticut); D. Koller, J. McClintick, S. O'Connor, L. Wetherill, X. Xuei, Y. Liu (Indiana University); G. Chan (University of Iowa; University of Connecticut); D. Chorlian, N. Manz, C. Kamarajan, A. Pandey (SUNY Downstate); J.-C. Wang, M. Kapoor (Icahn School of Medicine at Mount Sinai) and F. Aliev (Virginia Commonwealth University). A. Parsian and M. Reilly are the NIAAA Staff Collaborators.

We continue to be inspired by our memories of Henri Begleiter and Theodore Reich, founding PI and Co-PI of COGA, and also owe a debt of gratitude to other past organizers of COGA, including Ting-Kai Li, currently a consultant with COGA, P. Michael Conneally, Raymond Crowe, and Wendy Reich, for their critical contributions. This study is supported by NIH grant U10AA008401 from the National Institute on Alcohol Abuse and Alcoholism (NIAAA) and the National Institute on Drug Abuse (NIDA), and grant AA05524 (PI: Bernice Porjesz) from NIAAA.

Author Contributions

Conceived and designed the experiments: CK BP AS. Performed the experiments: CK AS AKP NM DBC BP. Analyzed the data: CK AKP NM DBC BP. Contributed reagents/materials/analysis tools: NM DBC BP AS APA LOB SK MAS VMH. Wrote the paper: CK BP. Corrections/review/suggestions: BP DBC AKP NM APA SK JK KKB.

References

1. Haas LF. Hans Berger (1873–1941), Richard Caton (1842–1926), and electroencephalography. *J Neurol Neurosurg Psychiatry*. 2003; 74(1):9. PMID: [12486257](#)
2. Basar E. *Brain Function and Oscillations*. Vol. I: Principles and Approaches. Berlin: Springer Verlag; 1999.
3. Tallon-Baudry C, Bertrand O. Oscillatory gamma activity in humans and its role in object representation. *Trends Cogn Sci*. 1999; 3(4):151–62. PMID: [10322469](#)
4. Jones KA, Porjesz B, Chorlian D, Rangaswamy M, Kamarajan C, Padmanabhapillai A, et al. S-transform time-frequency analysis of P300 reveals deficits in individuals diagnosed with alcoholism. *Clin Neurophysiol*. 2006; 117(10):2128–43. PMID: [16926113](#)
5. Basar E, Basar-Eroglu C, Karakas S, Schurmann M. Are cognitive processes manifested in event-related gamma, alpha, theta and delta oscillations in the EEG? *Neurosci Lett*. 1999; 259(3):165–8. PMID: [10025584](#)
6. Basar E, Basar-Eroglu C, Karakas S, Schurmann M. Brain oscillations in perception and memory. *Int J Psychophysiol*. 2000; 35(2–3):95–124. PMID: [10677641](#)
7. Basar E, Basar-Eroglu C, Karakas S, Schurmann M. Gamma, alpha, delta, and theta oscillations govern cognitive processes. *Int J Psychophysiol*. 2001; 39(2–3):241–8. PMID: [11163901](#)
8. Demiralp T, Bayraktaroglu Z, Lenz D, Junge S, Busch NA, Maess B, et al. Gamma amplitudes are coupled to theta phase in human EEG during visual perception. *Int J Psychophysiol*. 2007; 64(1):24–30. PMID: [16956685](#)
9. Guntekin B, Basar E. Emotional face expressions are differentiated with brain oscillations. *Int J Psychophysiol*. 2007; 64(1):91–100. PMID: [17156875](#)
10. Knyazev GG, Levin EA, Savostyanov AN. A failure to stop and attention fluctuations: an evoked oscillations study of the stop-signal paradigm. *Clin Neurophysiol*. 2008; 119(3):556–67. doi: [10.1016/j.clinph.2007.11.041](#) PMID: [18164656](#)
11. Klimesch W, Doppelmayr M, Pachinger T, Ripper B. Brain oscillations and human memory: EEG correlates in the upper alpha and theta band. *Neurosci Lett*. 1997; 238(1–2):9–12. PMID: [9464642](#)
12. Freunberger R, Klimesch W, Sauseng P, Griesmayr B, Holler Y, Pecherstorfer T, et al. Gamma oscillatory activity in a visual discrimination task. *Brain Res Bull*. 2007; 71(6):593–600. PMID: [17292802](#)
13. Freunberger R, Werkle-Bergner M, Griesmayr B, Lindenberger U, Klimesch W. Brain oscillatory correlates of working memory constraints. *Brain Res*. 2011; 1375(0):93–102.
14. Kamarajan C, Rangaswamy M, Chorlian DB, Manz N, Tang Y, Pandey AK, et al. Theta oscillations during the processing of monetary loss and gain: a perspective on gender and impulsivity. *Brain Res*. 2008; 1235:45–62. doi: [10.1016/j.brainres.2008.06.051](#) PMID: [18616934](#)
15. Basar E. Brain oscillations in neuropsychiatric disease. *Dialogues Clin Neurosci*. 2013; 15(3):291–300. PMID: [24174901](#)
16. Pandey AK, Kamarajan C, Rangaswamy M, Porjesz B. Event-Related Oscillations in Alcoholism Research: A Review. *J Addict Res Ther*. 2012; Suppl 7(1):1–13.
17. Porjesz B, Rangaswamy M. Neurophysiological endophenotypes, CNS disinhibition, and risk for alcohol dependence and related disorders. *ScientificWorldJournal*. 2007; 7:131–41. PMID: [17982586](#)
18. Porjesz B, Rangaswamy M, Kamarajan C, Jones KA, Padmanabhapillai A, Begleiter H. The utility of neurophysiological markers in the study of alcoholism. *Clin Neurophysiol*. 2005; 116(5):993–1018. PMID: [15826840](#)
19. Rangaswamy M, Porjesz B. Understanding alcohol use disorders with neuroelectrophysiology. In: Pfefferbaum A, Sullivan EV, editors. *Handb Clin Neurol*. New York: Elsevier; 2014. p. 383–414.
20. Koob GF. Theoretical frameworks and mechanistic aspects of alcohol addiction: alcohol addiction as a reward deficit disorder. *Curr Top Behav Neurosci*. 2013; 13:3–30. doi: [10.1007/7854_2011_129](#) PMID: [21744309](#)
21. de Greck M, Supady A, Thiemann R, Tempelmann C, Bogerts B, Förschner L, et al. Decreased neural activity in reward circuitry during personal reference in abstinent alcoholics—a fMRI study. *Hum Brain Mapp*. 2009; 30(5):1691–704. doi: [10.1002/hbm.20634](#) PMID: [18711709](#)
22. Makris N, Oscar-Berman M, Jaffin SK, Hodge SM, Kennedy DN, Caviness VS, et al. Decreased volume of the brain reward system in alcoholism. *Biol Psychiatry*. 2008; 64(3):192–202. doi: [10.1016/j.biopsych.2008.01.018](#) PMID: [18374900](#)
23. Porjesz B, Begleiter H, Bihari B, Kissin B. Event-related brain potentials to high incentive stimuli in abstinent alcoholics. *Alcohol*. 1987; 4(4):283–7. PMID: [3620097](#)

24. Fein G, Chang M. Smaller feedback ERN amplitudes during the BART are associated with a greater family history density of alcohol problems in treatment-naive alcoholics. *Drug Alcohol Depend.* 2008; 92(1–3):141–8. PMID: [17869027](#)
25. Kamarajan C, Rangaswamy M, Tang Y, Chorlian DB, Pandey AK, Roopesh BN, et al. Dysfunctional reward processing in male alcoholics: an ERP study during a gambling task. *J Psychiatr Res.* 2010; 44(9):576–90. doi: [10.1016/j.jpsychires.2009.11.019](#) PMID: [20035952](#)
26. Ramsey SE, Finn PR. P300 from men with a family history of alcoholism under different incentive conditions. *J Stud Alcohol.* 1997; 58(6):606–16. PMID: [9391920](#)
27. Gehring WJ, Willoughby AR. The medial frontal cortex and the rapid processing of monetary gains and losses. *Science.* 2002; 295(5563):2279–82. PMID: [11910116](#)
28. Holroyd CB, Larsen JT, Cohen JD. Context dependence of the event-related brain potential associated with reward and punishment. *Psychophysiology.* 2004; 41(2):245–53. PMID: [15032989](#)
29. Holroyd CB, Hajcak G, Larsen JT. The good, the bad and the neutral: electrophysiological responses to feedback stimuli. *Brain Res.* 2006; 1105(1):93–101. PMID: [16427615](#)
30. Luu P, Tucker DM, Makeig S. Frontal midline theta and the error-related negativity: neurophysiological mechanisms of action regulation. *Clin Neurophysiol.* 2004; 115(8):1821–35. PMID: [15261861](#)
31. Nieuwenhuis S, Yeung N, Holroyd CB, Schurger A, Cohen JD. Sensitivity of electrophysiological activity from medial frontal cortex to utilitarian and performance feedback. *Cereb Cortex.* 2004; 14(7):741–7. PMID: [15054053](#)
32. Nieuwenhuis S, Slagter HA, von Geusau NJ, Heslenfeld DJ, Holroyd CB. Knowing good from bad: differential activation of human cortical areas by positive and negative outcomes. *Eur J Neurosci.* 2005; 21(11):3161–8. PMID: [15978024](#)
33. Hajcak G, Holroyd CB, Moser JS, Simons RF. Brain potentials associated with expected and unexpected good and bad outcomes. *Psychophysiology.* 2005; 42(2):161–70. PMID: [15787853](#)
34. Hajcak G, Moser JS, Holroyd CB, Simons RF. The feedback-related negativity reflects the binary evaluation of good versus bad outcomes. *Biol Psychol.* 2006; 71(2):148–54. PMID: [16005561](#)
35. Hajcak G, Moser JS, Holroyd CB, Simons RF. It's worse than you thought: the feedback negativity and violations of reward prediction in gambling tasks. *Psychophysiology.* 2007; 44(6):905–12. PMID: [17666029](#)
36. Toyomaki A, Murohashi H. Discrepancy between feedback negativity and subjective evaluation in gambling. *Neuroreport.* 2005; 16(16):1865–8. PMID: [16237344](#)
37. Yeung N, Holroyd CB, Cohen JD. ERP correlates of feedback and reward processing in the presence and absence of response choice. *Cereb Cortex.* 2005; 15(5):535–44. PMID: [15319308](#)
38. Yu R, Zhou X. Brain potentials associated with outcome expectation and outcome evaluation. *Neuroreport.* 2006; 17(15):1649–53. PMID: [17001286](#)
39. Cohen MX, Elger CE, Ranganath C. Reward expectation modulates feedback-related negativity and EEG spectra. *Neuroimage.* 2007; 35(2):968–78. PMID: [17257860](#)
40. Mennes M, Wouters H, van den Bergh B, Lagae L, Stiers P. ERP correlates of complex human decision making in a gambling paradigm: Detection and resolution of conflict. *Psychophysiology.* 2008.
41. Kamarajan C, Porjesz B, Rangaswamy M, Tang Y, Chorlian DB, Padmanabhapillai A, et al. Brain signatures of monetary loss and gain: outcome-related potentials in a single outcome gambling task. *Behav Brain Res.* 2009; 197(1):62–76. doi: [10.1016/j.bbr.2008.08.011](#) PMID: [18775749](#)
42. Liu Y, Nelson LD, Bernat EM, Gehring WJ. Perceptual properties of feedback stimuli influence the feedback-related negativity in the flanker gambling task. *Psychophysiology.* 2014.
43. Luu P, Tucker DM, Derryberry D, Reed M, Poulsen C. Electrophysiological responses to errors and feedback in the process of action regulation. *Psychol Sci.* 2003; 14(1):47–53. PMID: [12564753](#)
44. Gehring WJ, Willoughby AR. Are all medial frontal negativities created equal? Toward a richer empirical basis for theories of action monitoring. In: Ullsperger M, Falkenstein M, editors. *Errors, Conflicts, and the Brain: Current Opinions on Performance Monitoring.* Leipzig: Max Planck Institute of Cognitive Neuroscience; 2004.
45. Bernat EM, Nelson LD, Steele VR, Gehring WJ, Patrick CJ. Externalizing psychopathology and gain-loss feedback in a simulated gambling task: dissociable components of brain response revealed by time-frequency analysis. *J Abnorm Psychol.* 2011; 120(2):352–64. doi: [10.1037/a0022124](#) PMID: [21319875](#)
46. Chorlian DB, Rangaswamy M, Manz N, Kamarajan C, Pandey AK, Edenberg H, et al. Gender modulates the development of theta event related oscillations in adolescents and young adults. *Behav Brain Res.* 2015; 292(1):342–52.

47. Marinkovic K, Rosen BQ, Cox B, Kovacevic S. Event-Related Theta Power during Lexical-Semantic Retrieval and Decision Conflict is Modulated by Alcohol Intoxication: Anatomically Constrained MEG. *Front Psychol.* 2012; 3:121. doi: [10.3389/fpsyg.2012.00121](https://doi.org/10.3389/fpsyg.2012.00121) PMID: [22536192](https://pubmed.ncbi.nlm.nih.gov/22536192/)
48. Kovacevic S, Azma S, Irimia A, Sherfey J, Halgren E, Marinkovic K. Theta oscillations are sensitive to both early and late conflict processing stages: effects of alcohol intoxication. *PLoS One.* 2012; 7(8): e43957. doi: [10.1371/journal.pone.0043957](https://doi.org/10.1371/journal.pone.0043957) PMID: [22952823](https://pubmed.ncbi.nlm.nih.gov/22952823/)
49. Kamarajan C, Rangaswamy M, Manz N, Chorlian DB, Pandey AK, Roopesh BN, et al. Topography, power, and current source density of theta oscillations during reward processing as markers for alcohol dependence. *Hum Brain Mapp.* 2012; 33(5):1019–39. doi: [10.1002/hbm.21267](https://doi.org/10.1002/hbm.21267) PMID: [21520344](https://pubmed.ncbi.nlm.nih.gov/21520344/)
50. Gilmore CS, Fein G. Theta event-related synchronization is a biomarker for a morbid effect of alcoholism on the brain that may partially resolve with extended abstinence. *Brain Behav.* 2012; 2(6):796–805. doi: [10.1002/brb3.95](https://doi.org/10.1002/brb3.95) PMID: [23170242](https://pubmed.ncbi.nlm.nih.gov/23170242/)
51. Schmiedt-Fehr C, Basar-Eroglu C. Event-related delta and theta brain oscillations reflect age-related changes in both a general and a specific neuronal inhibitory mechanism. *Clin Neurophysiol.* 2011; 122(6):1156–67. doi: [10.1016/j.clinph.2010.10.045](https://doi.org/10.1016/j.clinph.2010.10.045) PMID: [21115266](https://pubmed.ncbi.nlm.nih.gov/21115266/)
52. Yordanova J, Kolev V. Event-related brain oscillations in normal development. In: Schmidt LA, Segalowitz SJ, editors. *Developmental psychophysiology: Theory, systems and methods.* New York: Cambridge University Press; 2008. p. 15–68.
53. Yener GG, Guntekin B, Oniz A, Basar E. Increased frontal phase-locking of event-related theta oscillations in Alzheimer patients treated with cholinesterase inhibitors. *Int J Psychophysiol.* 2007; 64(1):46–52. PMID: [17011650](https://pubmed.ncbi.nlm.nih.gov/17011650/)
54. Mizuhara H, Yamaguchi Y. Human cortical circuits for central executive function emerge by theta phase synchronization. *Neuroimage.* 2007; 36(1):232–44. PMID: [17433880](https://pubmed.ncbi.nlm.nih.gov/17433880/)
55. Yordanova J, Heinrich H, Kolev V, Rothenberger A. Increased event-related theta activity as a psychophysiological marker of comorbidity in children with tics and attention-deficit/hyperactivity disorders. *Neuroimage.* 2006; 32(2):940–55. PMID: [16730196](https://pubmed.ncbi.nlm.nih.gov/16730196/)
56. Schmiedt C, Brand A, Hildebrandt H, Basar-Eroglu C. Event-related theta oscillations during working memory tasks in patients with schizophrenia and healthy controls. *Brain Res Cogn Brain Res.* 2005; 25(3):936–47. PMID: [16289526](https://pubmed.ncbi.nlm.nih.gov/16289526/)
57. Klimesch W, Schack B, Schabus M, Doppelmayr M, Gruber W, Sauseng P. Phase-locked alpha and theta oscillations generate the P1-N1 complex and are related to memory performance. *Brain Res Cogn Brain Res.* 2004; 19(3):302–16. PMID: [15062867](https://pubmed.ncbi.nlm.nih.gov/15062867/)
58. Yordanova J, Kolev V. Developmental changes in the event-related EEG theta response and P300. *Electroencephalogr Clin Neurophysiol.* 1997; 104(5):418–30. PMID: [9344078](https://pubmed.ncbi.nlm.nih.gov/9344078/)
59. Kahana MJ, Seelig D, Madsen JR. Theta returns. *Curr Opin Neurobiol.* 2001; 11(6):739–44. PMID: [11741027](https://pubmed.ncbi.nlm.nih.gov/11741027/)
60. Raghavachari S, Lisman JE, Tully M, Madsen JR, Bromfield EB, Kahana MJ. Theta oscillations in human cortex during a working-memory task: evidence for local generators. *J Neurophysiol.* 2006; 95(3):1630–8. PMID: [16207788](https://pubmed.ncbi.nlm.nih.gov/16207788/)
61. Basar E, Schmiedt-Fehr C, Mathes B, Femir B, Emek-Savas DD, Tulay E, et al. What does the broken brain say to the neuroscientist? Oscillations and connectivity in schizophrenia, Alzheimer's disease, and bipolar disorder. *Int J Psychophysiol.* 2015.
62. Basar E, Guntekin B. Review of delta, theta, alpha, beta, and gamma response oscillations in neuropsychiatric disorders. *Suppl Clin Neurophysiol.* 2013; 62:303–41. PMID: [24053047](https://pubmed.ncbi.nlm.nih.gov/24053047/)
63. Basar E, Guntekin B. A review of brain oscillations in cognitive disorders and the role of neurotransmitters. *Brain Res.* 2008; 1235(0):172–93.
64. Kamarajan C, Porjesz B, Jones KA, Choi K, Chorlian DB, Padmanabhapillai A, et al. The role of brain oscillations as functional correlates of cognitive systems: a study of frontal inhibitory control in alcoholism. *Int J Psychophysiol.* 2004; 51(2):155–80. PMID: [14693365](https://pubmed.ncbi.nlm.nih.gov/14693365/)
65. Kamarajan C, Porjesz B, Jones K, Chorlian D, Padmanabhapillai A, Rangaswamy M, et al. Event-related oscillations in offspring of alcoholics: neurocognitive disinhibition as a risk for alcoholism. *Biol Psychiatry.* 2006; 59(7):625–34. PMID: [16213472](https://pubmed.ncbi.nlm.nih.gov/16213472/)
66. Rangaswamy M, Jones KA, Porjesz B, Chorlian DB, Padmanabhapillai A, Kamarajan C, et al. Delta and theta oscillations as risk markers in adolescent offspring of alcoholics. *Int J Psychophysiol.* 2007; 63(1):3–15. PMID: [17129626](https://pubmed.ncbi.nlm.nih.gov/17129626/)
67. Kamarajan C, Pandey AK, Chorlian DB, Manz N, Stimus AT, Bauer LO, et al. Reward processing deficits and impulsivity in high-risk offspring of alcoholics: A study of event-related potentials during a monetary gambling task. *Int J Psychophysiol.* 2015; Sep 18. doi: [10.1016/j.ijpsycho.2015.09.005](https://doi.org/10.1016/j.ijpsycho.2015.09.005)

68. Basar-Eroglu C, Basar E, Demiralp T, Schurmann M. P300-response: possible psychophysiological correlates in delta and theta frequency channels. A review. *Int J Psychophysiol.* 1992; 13(2):161–79. PMID: [1399755](#)
69. Karakas S, Erzenin OU, Basar E. The genesis of human event-related responses explained through the theory of oscillatory neural assemblies. *Neurosci Lett.* 2000; 285(1):45–8. PMID: [10788704](#)
70. Marco-Pallares J, Cucurell D, Cunillera T, Garcia R, Andres-Pueyo A, Munte TF, et al. Human oscillatory activity associated to reward processing in a gambling task. *Neuropsychologia.* 2008; 46(1):241–8. PMID: [17804025](#)
71. Tenke CE, Kayser J. Generator localization by current source density (CSD): implications of volume conduction and field closure at intracranial and scalp resolutions. *Clin Neurophysiol.* 2012; 123(12):2328–45. doi: [10.1016/j.clinph.2012.06.005](#) PMID: [22796039](#)
72. Dick DM, Aliev F, Latendresse S, Porjesz B, Schuckit M, Rangaswamy M, et al. How phenotype and developmental stage affect the genes we find: GABRA2 and impulsivity. *Twin Res Hum Genet.* 2013; 16(3):661–9. doi: [10.1017/thg.2013.20](#) PMID: [23561058](#)
73. Begleiter H, Reich T, Hesselbrock VM, Porjesz B, Li TK, Schuckit MA, et al. The Collaborative Study on the Genetics of Alcoholism. *Alcohol Health Res World.* 1995; 19:228–36.
74. Edenberg HJ, Bierut LJ, Boyce P, Cao M, Cawley S, Chiles R, et al. Description of the data from the Collaborative Study on the Genetics of Alcoholism (COGA) and single-nucleotide polymorphism genotyping for Genetic Analysis Workshop 14. *BMC Genet.* 2005; 6 Suppl 1:S2. PMID: [16451628](#)
75. Foroud T, Edenberg HJ, Goate A, Rice J, Flury L, Koller DL, et al. Alcoholism susceptibility loci: confirmation studies in a replicate sample and further mapping. *Alcohol Clin Exp Res.* 2000; 24(7):933–45. PMID: [10923994](#)
76. Nurnberger JI Jr., Wiegand R, Bucholz K, O'Connor S, Meyer ET, Reich T, et al. A family study of alcohol dependence: coaggregation of multiple disorders in relatives of alcohol-dependent probands. *Arch Gen Psychiatry.* 2004; 61(12):1246–56. PMID: [15583116](#)
77. Reich T, Edenberg HJ, Goate A, Williams JT, Rice JP, Van Eerdewegh P, et al. Genome-wide search for genes affecting the risk for alcohol dependence. *Am J Med Genet.* 1998; 81(3):207–15. PMID: [9603606](#)
78. Bucholz KK, Cadoret R, Cloninger CR, Dinwiddie SH, Hesselbrock VM, Nurnberger JI Jr., et al. A new, semi-structured psychiatric interview for use in genetic linkage studies: a report on the reliability of the SSAGA. *J Stud Alcohol.* 1994; 55(2):149–58. PMID: [8189735](#)
79. Rice JP, Reich T, Bucholz KK, Neuman RJ, Fishman R, Rochberg N, et al. Comparison of direct interview and family history diagnoses of alcohol dependence. *Alcohol Clin Exp Res.* 1995; 19(4):1018–23. PMID: [7485811](#)
80. Patton JH, Stanford MS, Barratt ES. Factor structure of the Barratt impulsiveness scale. *J Clin Psychol.* 1995; 51(6):768–74. PMID: [8778124](#)
81. Barratt ES. Impulsiveness subtraits: Arousal and information processing. In: Spence JT, Izard CE, editors. *Motivation, Emotion and Personality.* New York: Elsevier; 1985. p. 137–46.
82. Cohen HL, Wang W, Porjesz B, Bauer L, Kuperman S, O'Connor SJ, et al. Visual P300: an interlaboratory consistency study. *Alcohol.* 1994; 11(6):583–7. PMID: [7865162](#)
83. Alexander JE, Polich J, Bloom FE, Bauer LO, Kuperman S, Rohrbaugh J, et al. P300 from an auditory oddball task: inter-laboratory consistency. *Int J Psychophysiol.* 1994; 17(1):35–46. PMID: [7961052](#)
84. Kuperman S, Porjesz B, Arndt S, Bauer L, Begleiter H, Cizadlo T, et al. Multi-center N400 ERP consistency using a primed and unprimed word paradigm. *Electroencephalogr Clin Neurophysiol.* 1995; 94(6):462–70. PMID: [7607100](#)
85. Rohrbaugh JW, Dunham DN, Stewart PA, Bauer LO, Kuperman S, O'Connor SJ, et al. Slow brain potentials in a visual-spatial memory task: topographic distribution and inter-laboratory consistency. *Int J Psychophysiol.* 1997; 25(2):111–22. PMID: [9101336](#)
86. Chatrian GE, Lettich E, Nelson PL. Ten percent electrode system for topographic studies of spontaneous and evoked EEG activities. *Am J EEG Technol.* 1985; 25(2):83–92.
87. Chatrian GE, Lettich E, Nelson PL. Modified nomenclature for the "10%" electrode system. *J Clin Neurophysiol.* 1988; 5(2):183–6. PMID: [3250964](#)
88. Oostenveld R, Praamstra P. The five percent electrode system for high-resolution EEG and ERP measurements. *Clin Neurophysiol.* 2001; 112(4):713–9. PMID: [11275545](#)
89. Stockwell RG, Mansinha L, Lowe RP. Localization of the complex spectrum: The S-transform. *IEEE Trans Sig Proc.* 1996; 44:998–1001.
90. Yun L, Xiaochun X, Bin L, Jinfeng P. Time-frequency Analysis Based on the S-transform. *International Journal of Signal Processing, Image Processing and Pattern Recognition.* 2013; 6(5):245–54.

91. Jones KA, Porjesz B, Almasy L, Bierut L, Goate A, Wang JC, et al. Linkage and linkage disequilibrium of evoked EEG oscillations with CHRM2 receptor gene polymorphisms: implications for human brain dynamics and cognition. *Int J Psychophysiol.* 2004; 53(2):75–90. PMID: [15210286](#)
92. Padmanabhapillai A, Porjesz B, Ranganathan M, Jones KA, Chorlian DB, Tang Y, et al. Suppression of early evoked gamma band response in male alcoholics during a visual oddball task. *Int J Psychophysiol.* 2006; 60(1):15–26. PMID: [16019097](#)
93. Padmanabhapillai A, Tang Y, Ranganathan M, Rangaswamy M, Jones KA, Chorlian DB, et al. Evoked gamma band response in male adolescent subjects at high risk for alcoholism during a visual oddball task. *Int J Psychophysiol.* 2006; 62(2):262–71. PMID: [16887227](#)
94. Gabor D. Theory of communications. *Journal of the Institution of Electrical Engineers.* 1946; 93:429–57.
95. Harper J, Malone SM, Bernat EM. Theta and delta band activity explain N2 and P3 ERP component activity in a go/no-go task. *Clin Neurophysiol.* 2014; 125(1):124–32. doi: [10.1016/j.clinph.2013.06.025](#) PMID: [23891195](#)
96. Hjorth B. An on-line transformation of EEG scalp potentials into orthogonal source derivations. *Electroencephalogr Clin Neurophysiol.* 1975; 39(5):526–30. PMID: [52448](#)
97. Nunez PL. Estimation of large scale neocortical source activity with EEG surface Laplacians. *Brain Topogr.* 1989; 2(1–2):141–54. PMID: [2641467](#)
98. Srinivasan R. Methods to improve the spatial resolution of EEG. *International Journal of Bioelectromagnetism.* 1999; 1(1):102–11.
99. Kamarajan C, Pandey AK, Chorlian DB, Porjesz B. The use of current source density as electrophysiological correlates in neuropsychiatric disorders: A review of human studies. *Int J Psychophysiol.* 2015; 97(3):310–22. doi: [10.1016/j.ijpsycho.2014.10.013](#) PMID: [25448264](#)
100. Wang K, Begleiter H. Local polynomial estimate of surface Laplacian. *Brain Topogr.* 1999; 12(1):19–29. PMID: [10582562](#)
101. Kamarajan C, Porjesz B, Jones KA, Choi K, Chorlian DB, Padmanabhapillai A, et al. Alcoholism is a disinhibitory disorder: neurophysiological evidence from a Go/No-Go task. *Biol Psychol.* 2005; 69(3):353–73. PMID: [15925035](#)
102. Nunez PL. *Electric fields of the brain: the neurophysics of EEG.* New York: Oxford University Press; 1981.
103. Nunez PL, Pilgreen KL. The spline-Laplacian in clinical neurophysiology: a method to improve EEG spatial resolution. *J Clin Neurophysiol.* 1991; 8(4):397–413. PMID: [1761706](#)
104. Hjorth B. Principles for transformation of scalp EEG from potential field into source distribution. *J Clin Neurophysiol.* 1991; 8(4):391–6. PMID: [1761705](#)
105. Kayser J, Tenke CE, Kropfmann CJ, Alschuler DM, Fekri S, Ben-David S, et al. Auditory event-related potentials and alpha oscillations in the psychosis prodrome: Neuronal generator patterns during a novelty oddball task. *Int J Psychophysiol.* 2014; 91(2):104–20. doi: [10.1016/j.ijpsycho.2013.12.003](#) PMID: [24333745](#)
106. O'Brien RG, Kaiser MK. MANOVA method for analyzing repeated measures designs: an extensive primer. *Psychol Bull.* 1985; 97(2):316–33. PMID: [3983301](#)
107. Field AP. A bluffer's guide to sphericity. *Newsletter of the Mathematical, Statistical and Computing Section of the British Psychological Society.* 1988; 6(1):13–22.
108. Bell MA, Cuevas K. Using EEG to Study Cognitive Development: Issues and Practices. *J Cogn Dev.* 2012; 13(3):281–94. PMID: [23144592](#)
109. Schacter DL. EEG theta waves and psychological phenomena: a review and analysis. *Biol Psychol.* 1977; 5(1):47–82. PMID: [193587](#)
110. Basar E. *Brain Function and Oscillations. Vol. II: Integrative brain function, neurophysiology and cognitive processes.* Berlin: Springer Verlag; 1999.
111. Basar-Eroglu C, Demiralp T. Event-related theta oscillations: an integrative and comparative approach in the human and animal brain. *Int J Psychophysiol.* 2001; 39(2–3):167–95. PMID: [11163896](#)
112. Klimesch W. Memory processes, brain oscillations and EEG synchronization. *Int J Psychophysiol.* 1996; 24(1–2):61–100. PMID: [8978436](#)
113. Klimesch W. EEG alpha and theta oscillations reflect cognitive and memory performance: a review and analysis. *Brain Res Brain Res Rev.* 1999; 29(2–3):169–95. PMID: [10209231](#)
114. Klimesch W, Doppelmayr M, Russegger H, Pachinger T. Theta band power in the human scalp EEG and the encoding of new information. *Neuroreport.* 1996; 7(7):1235–40. PMID: [8817539](#)

115. Klimesch W, Doppelmayr M, Schimke H, Ripper B. Theta synchronization and alpha desynchronization in a memory task. *Psychophysiology*. 1997; 34(2):169–76. PMID: [9090266](#)
116. Klimesch W, Doppelmayr M, Wimmer H, Schwaiger J, Rohm D, Gruber W, et al. Theta band power changes in normal and dyslexic children. *Clin Neurophysiol*. 2001; 112(7):1174–85. PMID: [11516729](#)
117. Klimesch W, Doppelmayr M, Yonelinas A, Kroll NE, Lazzara M, Rohm D, et al. Theta synchronization during episodic retrieval: neural correlates of conscious awareness. *Brain Res Cogn Brain Res*. 2001; 12(1):33–8. PMID: [11489606](#)
118. Klimesch W, Schack B, Sauseng P. The functional significance of theta and upper alpha oscillations. *Exp Psychol*. 2005; 52(2):99–108. PMID: [15850157](#)
119. Klimesch W, Hanslmayr S, Sauseng P, Gruber W, Brozinsky CJ, Kroll NE, et al. Oscillatory EEG correlates of episodic trace decay. *Cereb Cortex*. 2006; 16(2):280–90. PMID: [15888605](#)
120. Raghavachari S, Kahana MJ, Rizzuto DS, Caplan JB, Kirschen MP, Bourgeois B, et al. Gating of human theta oscillations by a working memory task. *J Neurosci*. 2001; 21(9):3175–83. PMID: [11312302](#)
121. Trujillo LT, Allen JJ. Theta EEG dynamics of the error-related negativity. *Clin Neurophysiol*. 2007; 118(3):645–68. PMID: [17223380](#)
122. Knyazev GG. Motivation, emotion, and their inhibitory control mirrored in brain oscillations. *Neurosci Biobehav Rev*. 2007; 31(3):377–95. PMID: [17145079](#)
123. Cservenka A, Nagel BJ. Risky decision-making: an fMRI study of youth at high risk for alcoholism. *Alcohol Clin Exp Res*. 2012; 36(4):604–15. doi: [10.1111/j.1530-0277.2011.01650.x](#) PMID: [22250647](#)
124. Stice E, Yokum S. Brain reward region responsivity of adolescents with and without parental substance use disorders. *Psychol Addict Behav*. 2014; 28(3):805–15. doi: [10.1037/a0034460](#) PMID: [24128289](#)
125. Segalowitz SJ, Schmidt LA. Capturing the Dynamic Endophenotype: A Developmental Psychophysiological Manifesto. In: Schmidt LA, Segalowitz SJ, editors. *Developmental psychophysiology: Theory, systems and methods*. New York: Cambridge University Press; 2008. p. 1–12.
126. Cservenka A, Casimo K, Fair DA, Nagel BJ. Resting state functional connectivity of the nucleus accumbens in youth with a family history of alcoholism. *Psychiatry Res*. 2014; 221(3):210–9. doi: [10.1016/j.psychres.2013.12.004](#) PMID: [24440571](#)
127. Spadoni AD, Simmons AN, Yang TT, Tapert SF. Family history of alcohol use disorders and neuromaturation: a functional connectivity study with adolescents. *Am J Drug Alcohol Abuse*. 2013; 39(6):356–64. doi: [10.3109/00952990.2013.818680](#) PMID: [24200205](#)
128. Wetherill RR, Bava S, Thompson WK, Boucquey V, Pulido C, Yang TT, et al. Frontoparietal connectivity in substance-naive youth with and without a family history of alcoholism. *Brain Res*. 2012; 1432:66–73. doi: [10.1016/j.brainres.2011.11.013](#) PMID: [22138427](#)
129. Herting MM, Fair D, Nagel BJ. Altered fronto-cerebellar connectivity in alcohol-naive youth with a family history of alcoholism. *Neuroimage*. 2011; 54(4):2582–9. doi: [10.1016/j.neuroimage.2010.10.030](#) PMID: [20970506](#)
130. Squeglia LM, Jacobus J, Brumback T, Meloy MJ, Tapert SF. White matter integrity in alcohol-naive youth with a family history of alcohol use disorders. *Psychol Med*. 2014; 44(13):2775–86. doi: [10.1017/S0033291714000609](#) PMID: [25066702](#)
131. Drejer K, Theilgaard A, Teasdale TW, Schulsinger F, Goodwin DW. A prospective study of young men at high risk for alcoholism: neuropsychological assessment. *Alcohol Clin Exp Res*. 1985; 9(6):498–502. PMID: [3911808](#)
132. Giancola PR, Moss HB, Martin CS, Kirisci L, Tarter RE. Executive cognitive functioning predicts reactive aggression in boys at high risk for substance abuse: a prospective study. *Alcohol Clin Exp Res*. 1996; 20(4):740–4. PMID: [8800393](#)
133. Cottencin O, Nandrino JL, Karila L, Mezerette C, Danel T. A case-comparison study of executive functions in alcohol-dependent adults with maternal history of alcoholism. *Eur Psychiatry*. 2009; 24(3):195–200. doi: [10.1016/j.eurpsy.2008.12.003](#) PMID: [19195848](#)
134. Bava S, Tapert SF. Adolescent brain development and the risk for alcohol and other drug problems. *Neuropsychol Rev*. 2010; 20(4):398–413. doi: [10.1007/s11065-010-9146-6](#) PMID: [20953990](#)
135. Begleiter H, Porjesz B, Bihari B, Kissin B. Event-related brain potentials in boys at risk for alcoholism. *Science*. 1984; 225(4669):1493–6. PMID: [6474187](#)
136. O'Connor S, Hesselbrock V, Tasman A. Correlates of increased risk for alcoholism in young men. *Prog Neuropsychopharmacol Biol Psychiatry*. 1986; 10(2):211–8. PMID: [3749512](#)
137. Begleiter H, Porjesz B, Rawlings R, Eckardt M. Auditory recovery function and P3 in boys at high risk for alcoholism. *Alcohol*. 1987; 4(4):315–21. PMID: [3620101](#)

138. O'Connor S, Hesselbrock V, Tasman A, DePalma N. P3 amplitudes in two distinct tasks are decreased in young men with a history of paternal alcoholism. *Alcohol*. 1987; 4(4):323–30. PMID: [3620102](#)
139. Whipple SC, Berman SM, Noble EP. Event-related potentials in alcoholic fathers and their sons. *Alcohol*. 1991; 8(4):321–7. PMID: [1872994](#)
140. Berman SM, Whipple SC, Fitch RJ, Noble EP. P3 in young boys as a predictor of adolescent substance use. *Alcohol*. 1993; 10(1):69–76. PMID: [8447968](#)
141. Benegal V, Jain S, Subbukrishna DK, Channabasavanna SM. P300 amplitudes vary inversely with continuum of risk in first degree male relatives of alcoholics. *Psychiatr Genet*. 1995; 5(4):149–56. PMID: [8750356](#)
142. Ramachandran G, Porjesz B, Begleiter H, Litke A. A simple auditory oddball task in young adult males at high risk for alcoholism. *Alcohol Clin Exp Res*. 1996; 20(1):9–15. PMID: [8651469](#)
143. Rodriguez Holguin S, Porjesz B, Chorlian DB, Polich J, Begleiter H. Visual P3a in male subjects at high risk for alcoholism. *Biol Psychiatry*. 1999; 46(2):281–91. PMID: [10418704](#)
144. Cohen HL, Porjesz B, Begleiter H, Wang W. Neuroelectric correlates of response production and inhibition in individuals at risk to develop alcoholism. *Biol Psychiatry*. 1997; 42(1):57–67. PMID: [9193742](#)
145. Porjesz B, Begleiter H, Litke A, Bauer LO, Kuperman S, O'Connor SJ, et al. Visual P3 as a potential phenotypic marker for alcoholism: Evidence from the COGA national project. In: Ogura C, Koga Y, Shimokochi M, editors. *Recent Advances in Event-Related Brain Potential Research*. Holland: Elsevier Science; 1996. p. 539–49.
146. Van der Stelt O, Geesken R, Gunning WB, Snel J, Kok A. P3 scalp topography to target and novel visual stimuli in children of alcoholics. *Alcohol*. 1998; 15(2):119–36. PMID: [9476958](#)
147. Polich J, Pollock VE, Bloom FE. Meta-analysis of P300 amplitude from males at risk for alcoholism. *Psychol Bull*. 1994; 115(1):55–73. PMID: [8310100](#)
148. Hill SY, Shen S, Locke J, Steinhauer SR, Konicky C, Lowers L, et al. Developmental delay in P300 production in children at high risk for developing alcohol-related disorders. *Biol Psychiatry*. 1999; 46(7):970–81. PMID: [10509180](#)
149. Hasin DS, Stinson FS, Ogburn E, Grant BF. Prevalence, correlates, disability, and comorbidity of DSM-IV alcohol abuse and dependence in the United States: results from the National Epidemiologic Survey on Alcohol and Related Conditions. *Arch Gen Psychiatry*. 2007; 64(7):830–42. PMID: [17606817](#)
150. Hardie TL, Moss HB, Lynch KG. Sex differences in the heritability of alcohol problems. *Am J Addict*. 2008; 17(4):319–27. doi: [10.1080/10550490802139010](#) PMID: [18612888](#)
151. Prescott CA. Sex differences in the genetic risk for alcoholism. *Alcohol Res Health*. 2002; 26(4):264–73. PMID: [12875036](#)
152. Garcia-Garcia M, Dominguez-Borras J, SanMiguel I, Escera C. Electrophysiological and behavioral evidence of gender differences in the modulation of distraction by the emotional context. *Biol Psychol*. 2008; 79(3):307–16. doi: [10.1016/j.biopsycho.2008.07.006](#) PMID: [18722500](#)
153. Shen X. Sex differences in perceptual processing: performance on the color-Kanji stroop task of visual stimuli. *Int J Neurosci*. 2005; 115(12):1631–41. PMID: [16287630](#)
154. Gasbarri A, Arnone B, Pompili A, Marchetti A, Pacitti F, Calil SS, et al. Sex-related lateralized effect of emotional content on declarative memory: an event related potential study. *Behav Brain Res*. 2006; 168(2):177–84. PMID: [16443292](#)
155. Guntekin B, Basar E. Gender differences influence brain's beta oscillatory responses in recognition of facial expressions. *Neurosci Lett*. 2007; 424(2):94–9. PMID: [17716816](#)
156. Guntekin B, Basar E. Brain oscillations are highly influenced by gender differences. *Int J Psychophysiol*. 2007; 65(3):294–9. PMID: [17459504](#)
157. Jaušovec N, Jaušovec K. Spatial rotation and recognizing emotions: Gender related differences in brain activity. *Intelligence*. 2008; 36(5):383–93.
158. Jausovec N, Jausovec K. Do women see things differently than men do? *Neuroimage*. 2009; 45(1):198–207. doi: [10.1016/j.neuroimage.2008.11.013](#) PMID: [19095068](#)
159. Knyazev GG, Slobodskoj-Plusnin JY, Bocharov AV. Gender differences in implicit and explicit processing of emotional facial expressions as revealed by event-related theta synchronization. *Emotion*. 2010; 10(5):678–87. doi: [10.1037/a0019175](#) PMID: [21038950](#)
160. Silverman I, Choi J, Peters M. The hunter-gatherer theory of sex differences in spatial abilities: data from 40 countries. *Arch Sex Behav*. 2007; 36(2):261–8. PMID: [17351740](#)
161. Ecuyer-Dab I, Robert M. Have sex differences in spatial ability evolved from male competition for mating and female concern for survival? *Cognition*. 2004; 91(3):221–57. PMID: [15168896](#)

162. De Bellis MD, Keshavan MS, Beers SR, Hall J, Frustaci K, Masalehdan A, et al. Sex differences in brain maturation during childhood and adolescence. *Cereb Cortex*. 2001; 11(6):552–7. PMID: [11375916](#)
163. Lenroot RK, Gogtay N, Greenstein DK, Wells EM, Wallace GL, Clasen LS, et al. Sexual dimorphism of brain developmental trajectories during childhood and adolescence. *Neuroimage*. 2007; 36(4):1065–73. PMID: [17513132](#)
164. Lenroot RK, Giedd JN. Sex differences in the adolescent brain. *Brain Cogn*. 2010; 72(1):46–55. doi: [10.1016/j.bandc.2009.10.008](#) PMID: [19913969](#)
165. Chuang CC, Sun CW. Gender-related effects of prefrontal cortex connectivity: a resting-state functional optical tomography study. *Biomed Opt Express*. 2014; 5(8):2503–16. doi: [10.1364/BOE.5.002503](#) PMID: [25136481](#)
166. Courchesne E. Chronology of postnatal human brain development: ERP, PET, myelinogenesis, and synaptogenesis studies. In: Rohrbaugh J, Parasuraman R, Johnson R Jr., editors. *Issues in event-related potential research: Tutorials and interdisciplinary vantages*. Oxford: Oxford University Press; 1990.
167. Johnson R Jr. Developmental evidence for modality-dependent P300 generators: a normative study. *Psychophysiology*. 1989; 26(6):651–67. PMID: [2629013](#)
168. Matousek M, Petersen I. Automatic evaluation of EEG background activity by means of age-dependent EEG quotients. *Electroencephalogr Clin Neurophysiol*. 1973; 35(6):603–12. PMID: [4128155](#)
169. John ER, Ahn H, Pritchep L, Trepetin M, Brown D, Kaye H. Developmental equations for the electroencephalogram. *Science*. 1980; 210(4475):1255–8. PMID: [7434026](#)
170. Gasser T, Verleger R, Bacher P, Sroka L. Development of the EEG of school-age children and adolescents. I. Analysis of band power. *Electroencephalogr Clin Neurophysiol*. 1988; 69(2):91–9. PMID: [2446839](#)
171. Wackermann J, Matousek M. From the 'EEG age' to a rational scale of brain electric maturation. *Electroencephalogr Clin Neurophysiol*. 1998; 107(6):415–21. PMID: [9922087](#)
172. Dustman RE, Shearer DE, Emmerson RY. Life-span changes in EEG spectral amplitude, amplitude variability and mean frequency. *Clin Neurophysiol*. 1999; 110(8):1399–409. PMID: [10454276](#)
173. Clarke AR, Barry RJ, McCarthy R, Selikowitz M. Age and sex effects in the EEG: development of the normal child. *Clin Neurophysiol*. 2001; 112(5):806–14. PMID: [11336896](#)
174. Boord PR, Rennie CJ, Williams LM. Integrating "brain" and "body" measures: correlations between EEG and metabolic changes over the human lifespan. *J Integr Neurosci*. 2007; 6(1):205–18. PMID: [17472230](#)
175. Ladouceur CD, Dahl RE, Carter CS. Development of action monitoring through adolescence into adulthood: ERP and source localization. *Dev Sci*. 2007; 10(6):874–91. PMID: [17973802](#)
176. Davies PL, Segalowitz SJ, Gavin WJ. Development of response-monitoring ERPs in 7- to 25-year-olds. *Dev Neuropsychol*. 2004; 25(3):355–76. PMID: [15148003](#)
177. Hammerer D, Li SC, Muller V, Lindenberger U. Life span differences in electrophysiological correlates of monitoring gains and losses during probabilistic reinforcement learning. *J Cogn Neurosci*. 2011; 23(3):579–92. doi: [10.1162/jocn.2010.21475](#) PMID: [20377358](#)
178. Hammerer D, Eppinger B. Dopaminergic and prefrontal contributions to reward-based learning and outcome monitoring during child development and aging. *Dev Psychol*. 2012; 48(3):862–74. doi: [10.1037/a0027342](#) PMID: [22390655](#)
179. Mohr PN, Li SC, Heekeren HR. Neuroeconomics and aging: neuromodulation of economic decision making in old age. *Neurosci Biobehav Rev*. 2010; 34(5):678–88. doi: [10.1016/j.neubiorev.2009.05.010](#) PMID: [19501615](#)
180. Bjork JM, Knutson B, Fong GW, Caggiano DM, Bennett SM, Hommer DW. Incentive-elicited brain activation in adolescents: similarities and differences from young adults. *J Neurosci*. 2004; 24(8):1793–802. PMID: [14985419](#)
181. Javadi AH, Schmidt DH, Smolka MN. Adolescents adapt more slowly than adults to varying reward contingencies. *J Cogn Neurosci*. 2014; 26(12):2670–81. doi: [10.1162/jocn_a_00677](#) PMID: [24960048](#)
182. Javadi AH, Schmidt DH, Smolka MN. Differential representation of feedback and decision in adolescents and adults. *Neuropsychologia*. 2014; 56(0):280–8.
183. Hauser TU, Iannaccone R, Walitza S, Brandeis D, Brem S. Cognitive flexibility in adolescence: neural and behavioral mechanisms of reward prediction error processing in adaptive decision making during development. *Neuroimage*. 2015; 104(0):347–54.

184. Gasser T, Jennen-Steinmetz C, Sroka L, Verleger R, Mocks J. Development of the EEG of school-age children and adolescents. II. Topography. *Electroencephalogr Clin Neurophysiol*. 1988; 69(2):100–9. PMID: [2446829](#)
185. Yordanova JY, Kolev VN. Developmental changes in the alpha response system. *Electroencephalogr Clin Neurophysiol*. 1996; 99(6):527–38. PMID: [9020812](#)
186. Kolev V, Yordanova J, Basar-Eroglu C, Basar E. Age effects on visual EEG responses reveal distinct frontal alpha networks. *Clin Neurophysiol*. 2002; 113(6):901–10. PMID: [12048049](#)
187. Yordanova J, Kolev V. Developmental changes in the theta response system: a single sweep analysis. *Journal of Psychophysiology*. 1998; 12(2):113–26.
188. Yordanova J, Kolev V. Event-Related Brain Oscillations Developmental Effects on Power and Synchronization. *J Psychophysiol*. 2009; 23(4):174–82.
189. Rubia K, Overmeyer S, Taylor E, Brammer M, Williams SC, Simmons A, et al. Functional frontalisation with age: mapping neurodevelopmental trajectories with fMRI. *Neurosci Biobehav Rev*. 2000; 24(1):13–9. PMID: [10654655](#)
190. Yurgelun-Todd DA, Killgore WD. Fear-related activity in the prefrontal cortex increases with age during adolescence: a preliminary fMRI study. *Neurosci Lett*. 2006; 406(3):194–9. PMID: [16942837](#)
191. Gogtay N, Giedd JN, Lusk L, Hayashi KM, Greenstein D, Vaituzis AC, et al. Dynamic mapping of human cortical development during childhood through early adulthood. *Proc Natl Acad Sci U S A*. 2004; 101(21):8174–9. PMID: [15148381](#)
192. Gogtay N, Thompson PM. Mapping gray matter development: implications for typical development and vulnerability to psychopathology. *Brain Cogn*. 2010; 72(1):6–15. doi: [10.1016/j.bandc.2009.08.009](#) PMID: [19796863](#)
193. Segalowitz SJ, Santesso DL, Jetha MK. Electrophysiological changes during adolescence: a review. *Brain Cogn*. 2010; 72(1):86–100. doi: [10.1016/j.bandc.2009.10.003](#) PMID: [19914761](#)
194. Matousek M, Petersen I. Frequency analysis of the EEG in normal children and adolescents. In: Kellaway P, Petersen I, editors. *Automation of clinical electroencephalography*. New York: Raven Press.; 1973. p. 75–102.
195. Saunders JT, Reppucci ND, Sarata BP. An examination of impulsivity as a trait characterizing delinquent youth. *Am J Orthopsychiatry*. 1973; 43(5):789–95. PMID: [4742820](#)
196. O'Boyle M, Barratt E. Impulsivity and DSM-III-R personality disorders. *Pers Individ Dif*. 1993; 14(4):609–11.
197. Krueger RF, Hicks BM, Patrick CJ, Carlson SR, Iacono WG, McGue M. Etiologic connections among substance dependence, antisocial behavior, and personality: modeling the externalizing spectrum. *J Abnorm Psychol*. 2002; 111(3):411–24. PMID: [12150417](#)
198. Romer D, Betancourt L, Giannetta JM, Brodsky NL, Farah M, Hurt H. Executive cognitive functions and impulsivity as correlates of risk taking and problem behavior in preadolescents. *Neuropsychologia*. 2009; 47(13):2916–26. doi: [10.1016/j.neuropsychologia.2009.06.019](#) PMID: [19560477](#)
199. Steinberg L, Albert D, Cauffman E, Banich M, Graham S, Woolard J. Age differences in sensation seeking and impulsivity as indexed by behavior and self-report: evidence for a dual systems model. *Dev Psychol*. 2008; 44(6):1764–78. doi: [10.1037/a0012955](#) PMID: [18999337](#)
200. Stoltzenberg SF, Batien BD, Birgenheir DG. Does gender moderate associations among impulsivity and health-risk behaviors? *Addict Behav*. 2008; 33(2):252–65. PMID: [17913380](#)
201. Sher KJ, Trull TJ. Personality and disinhibitory psychopathology: alcoholism and antisocial personality disorder. *J Abnorm Psychol*. 1994; 103(1):92–102. PMID: [8040486](#)
202. Verdejo-Garcia A, Lawrence AJ, Clark L. Impulsivity as a vulnerability marker for substance-use disorders: review of findings from high-risk research, problem gamblers and genetic association studies. *Neurosci Biobehav Rev*. 2008; 32(4):777–810. doi: [10.1016/j.neubiorev.2007.11.003](#) PMID: [18295884](#)
203. Dick DM, Smith G, Olausson P, Mitchell SH, Leeman RF, O'Malley SS, et al. Understanding the construct of impulsivity and its relationship to alcohol use disorders. *Addict Biol*. 2010; 15(2):217–26. doi: [10.1111/j.1369-1600.2009.00190.x](#) PMID: [20148781](#)
204. Cuijpers P, Langendoen Y, Bijl RV. Psychiatric disorders in adult children of problem drinkers: prevalence, first onset and comparison with other risk factors. *Addiction*. 1999; 94(10):1489–98. PMID: [10790901](#)
205. Sher KJ, Walitzer KS, Wood PK, Brent EE. Characteristics of children of alcoholics: putative risk factors, substance use and abuse, and psychopathology. *J Abnorm Psychol*. 1991; 100(4):427–48. PMID: [1757657](#)
206. Evenden JL. Varieties of impulsivity. *Psychopharmacology (Berl)*. 1999; 146(4):348–61.

207. de Wit H. Impulsivity as a determinant and consequence of drug use: a review of underlying processes. *Addict Biol.* 2009; 14(1):22–31. doi: [10.1111/j.1369-1600.2008.00129.x](https://doi.org/10.1111/j.1369-1600.2008.00129.x) PMID: [18855805](https://pubmed.ncbi.nlm.nih.gov/18855805/)
208. Crews FT, Boettiger CA. Impulsivity, frontal lobes and risk for addiction. *Pharmacol Biochem Behav.* 2009; 93(3):237–47. doi: [10.1016/j.pbb.2009.04.018](https://doi.org/10.1016/j.pbb.2009.04.018) PMID: [19410598](https://pubmed.ncbi.nlm.nih.gov/19410598/)
209. Romer D. Adolescent risk taking, impulsivity, and brain development: implications for prevention. *Dev Psychobiol.* 2010; 52(3):263–76. doi: [10.1002/dev.20442](https://doi.org/10.1002/dev.20442) PMID: [20175097](https://pubmed.ncbi.nlm.nih.gov/20175097/)
210. Verdejo-Garcia A, Bechara A, Recknor EC, Perez-Garcia M. Executive dysfunction in substance dependent individuals during drug use and abstinence: an examination of the behavioral, cognitive and emotional correlates of addiction. *J Int Neuropsychol Soc.* 2006; 12(3):405–15. PMID: [16903133](https://pubmed.ncbi.nlm.nih.gov/16903133/)
211. Geier C, Luna B. The maturation of incentive processing and cognitive control. *Pharmacol Biochem Behav.* 2009; 93(3):212–21. PMID: [19593842](https://pubmed.ncbi.nlm.nih.gov/19593842/)
212. Hall JR, Bernat EM, Patrick CJ. Externalizing psychopathology and the error-related negativity. *Psychol Sci.* 2007; 18(4):326–33. PMID: [17470258](https://pubmed.ncbi.nlm.nih.gov/17470258/)