

UC Merced

UC Merced Previously Published Works

Title

Applying the trans-contextual model to promote sport injury prevention behaviors among secondary school students

Permalink

<https://escholarship.org/uc/item/8b38k1r5>

Journal

Scandinavian Journal of Medicine and Science in Sports, 31(9)

ISSN

0905-7188

Authors

Lee, Alfred SY
Standage, Martyn
Hagger, Martin S
[et al.](#)

Publication Date

2021-09-01

DOI

10.1111/sms.14002

Peer reviewed

Applying the Trans-Contextual Model to Promote Sport Injury Prevention Behaviours among
Secondary School Students

Alfred S.Y. Lee^{1, 2}

Martyn Standage³

Martin S. Hagger^{4, 5}

Derwin K. C. Chan^{6, 1, 2}

¹ Centre for Child and Family Science, The Education University of Hong Kong

² School of Public Health, The University of Hong Kong

³ Centre for Motivation and Health Behaviour Change, Department for Health, University of Bath

⁴ SHARPP Lab, Psychological Sciences, University of California, Merced

⁵ Faculty of Sport and Health Sciences, University of Jyväskylä

⁶ Department of Early Childhood Education, The Education University of Hong Kong

The project is supported by Early Career Scheme, Hong Kong Research Grants Council [27106016] awarded to the corresponding author. Correspondence concerning this article should be addressed to Derwin K. C. Chan, Faculty of Education and Human Development, The Education University of Hong Kong. Email: derwin@eduhk.hk. The submitting author of this article is Alfred S. Y. Lee, Faculty of Education and Human Development, The Education University of Hong Kong. Email: alfredlee@eduhk.hk

Please cite this article as: Lee, A. S. Y., Standage, M., Hagger, M. S., & Chan, D. K. C. (in press). Applying the Trans-Contextual Model to Promote Sport Injury Prevention Behaviours among Secondary School Students. *Scandinavian Journal of Medicine and Science in Sports*. doi: 10.1111/sms.14002

Abstract

The current study tested the effects of an intervention based on the trans-contextual model (TCM) on secondary school PE students' sport injury prevention behaviour, and on theory-based motivational and social cognition mediators. Participants were PE students ($N=1,168$; $M_{\text{age}}=13.322\pm 1.045$, range=12 to 16; female=51.721%) who participated in a 3-month cluster-randomised controlled trial. Schools were randomly assigned to a treatment group, in which PE teachers received training to be more supportive of psychological needs in teaching sport injury prevention, or a control group, in which PE teachers received no training. Participants completed survey measures of TCM variables and self-reported sport injury prevention behaviour at baseline and at 3-month post-intervention follow-up. The proposed TCM model exhibited adequate fit with the data, $\chi^2=143.080$ (df=19), CFI=.956, TLI=.916, RMSEA=.078 [90% CI=.066 to .090], and SRMR=.058. We found positive, statistically significant direct intervention effects on changes in perceived psychological need support ($\beta=.064$, $p=.020$). We also found positive, significant direct ($\beta=.086$ to $.599$, $p<.001$) and indirect ($\beta=.002$ to $.027$, $p=.020$ to $.032$) intervention effects on changes in TCM variables and behaviours to prevent sport injuries. Our findings support the TCM as a useful framework for building an intervention for promoting sport injury prevention behaviours among secondary school students.

Keywords: Sport injury; self-determination theory; theory of planned behaviour; mobile health; digital health intervention.

Applying the Trans-Contextual Model to Promote Sport Injury Prevention Behaviours among Secondary School Students

Sport injury is the top reason for seeking medical attention among youth in many regions, including North America ¹, Australia ² and European Union ³. Adopting sport injury preventive behaviours, such as carrying out a warm-up before sport participation, completing cool-down exercises after sport ⁴, conducting regular muscle strengthening exercises ⁵, and performing sports with proper technique and equipment ^{6,7} have been identified as effective ways to minimise acute and chronic sport injuries ⁸. Failure to adhere to these injury prevention strategies may heighten the risk of sport injury ⁹. Therefore, researchers in the behavioural sciences have employed social psychological theories to develop an understanding of the factors that are related to engagement in sport injury preventive behaviours with the ultimate goal to inform efficacious interventions to reduce the rate of sport injuries ^{10,11}. The promotion of sport injury prevention is not only important in competitive sports, but also in school and during leisure-time physical activity. Students may learn and adopt sport injury prevention guidelines during physical education (PE) lessons ¹² and sport safety education is typically included in the PE curriculum ¹³. PE teachers, therefore, have an important role to play in educating young people in sport injury prevention ¹². Yet, the application and maintenance of sport injury prevention behaviours may not occur in unsupervised sport contexts outside of the school environment (i.e., unstructured and leisure time physical activities) ^{12,14}. Rather, PE teachers may contribute to facilitating students' motivation to engage in sport injury preventive behaviours in out-of-school contexts ^{12,15}. In the current study, we developed and tested the effectiveness of an intervention based on an integrated social cognition and motivational model, the trans-contextual model (TCM), ¹⁶⁻¹⁸ to improve sports injury prevention behaviours in out-of-school contexts among

secondary school students.

The Trans-Contextual Model

The TCM is a multi-theory model that integrates constructs and hypotheses from self-determination theory (SDT) ¹⁹, the theory of planned behaviour (TPB) ²⁰, and the hierarchical model of intrinsic and extrinsic motivation (HMM) ²¹ into a unified model aimed at predicting motivation and behaviour across multiple contexts ¹⁶. The original application of the TCM was in the context of predicting children's physical activity behaviour in PE and out-of-school contexts ¹⁶. The TCM has also been applied to predict injury prevention and rehabilitation behaviours across contexts in the domain of sport ^{12,22-25}. The model may provide a theoretical basis for informing the motivational strategies that PE teachers can apply in the classroom to facilitate students' participation in sport injury prevention in out-of-school contexts.

There are three premises of the TCM: (1) Students' perceived psychological need support from social agents is positively related to their autonomous motivation toward activities and behaviours within an educational context; (2) autonomous motivation in the educational context is positively related to autonomous motivation toward similar activities or behaviours in an out-of-school context; and (3) social cognition variables (i.e., attitude, subjective norm, and perceived behavioural control) that underpin future participation in the behaviour mediate the effects of autonomous motivation on intentions to perform, and actual participation in, activities or behaviour in the out-of-school context ^{18,26}.

Psychological Need support

Based on SDT ²⁷, the TCM makes the distinction between two fundamental forms of motivation that underpin behaviour: autonomous and controlled motivation ¹⁸. Behaviours are autonomously motivated when they are performed for intrinsic (acting out of fun and

enjoyment), integrated (acting consistent with life goals and true sense-of-self), or identified (acting to obtain self-endorsed and valued outcomes) reasons. On the other hand, actions are viewed as being engaged in for controlled motivation when they are performed for introjected (acting to avoid guilt and shame) and externally regulated (acting for contingent reward and to avoid punishment) reasons^{28,29}. Autonomous motivation is the most adaptive form of motivation, which and the form of motivation that tend to be related to behavioural persistence. This is because autonomously motivated actions are those that are most likely to satisfy basic psychological needs. Individuals who are autonomously motivated are more likely to perceive ownership of the behaviours and endorse their actions²⁹. Acting for autonomous reasons also leads to adaptive outcomes, including optimal overall functioning and positive affect²⁹. In contrast, acting out of controlled motivation means actions are performed for externally-referenced reasons (e.g., rewards, punishments, obligations)²⁸. When behaviour is regulated by controlled motives, it may lead to persistence only as long as the controlling contingencies are present, and as a result, is often not associated with long-term persistence in contexts where the onus is on individuals to self-regulate. Adopting behaviors for controlled reasons can often lead to maladaptive outcomes like negative affect and ill-being^{23,24,30}. In the context of sport injury prevention, students' autonomous motivation is positively associated with the sport injury prevention intention and behaviour^{15,31}.

According to SDT³², autonomous motivation can be fostered by satisfying the three innate psychological needs for autonomy (the need to experience choice and feel action emanate from the self), competence (the need to experience effectance in one's own actions), and relatedness (the need to feel connected and cared for by significant others). It is proposed that the three needs can be satisfied by need supportive behaviours performed by significant others' in

responsible or leadership positions in the actor's immediate environment (e.g., PE teachers).

Need supportive behaviours include providing choices, explaining the rationale for a particular behaviour, encouragement and actively listening to one's concern and accepting one's ability³²⁻³⁴. Furthermore, individuals' perceived need support, that is, the extent to which individuals feel that significant others support their psychological needs is an important factor determining autonomous motivation. The positive association between perceived need support from significant others and autonomous motivation has been consistently reported in previous studies^{15,26,30,35,36}. Based on this tenet, PE teachers who teach sport injury prevention in a psychological need supportive manner would be expected to facilitate students' perceived need support and autonomous motivation towards sport injury prevention behaviour¹². This prediction is consistent with the first premise of the TCM.

Transfer of Motivation

Another key premise of the TCM posits that an individual's autonomous motivation toward behaviours in one context (e.g., sport injury prevention in school) is transferable to motivation toward similar behaviours performed in another, related context (e.g., sport injury prevention outside of school)^{18,21,27}. This link is based on a prediction of the HMM suggesting that experiencing autonomous motivation toward behaviours performed in one context level is likely to be positively related to autonomous motivation toward behaviours in similar contexts²¹. The explanation for this prediction is that individuals develop motivational scripts or schemas when they experience autonomous motivation in a behaviour (e.g. sport injury prevention) in one context (e.g., PE lesson), and the scripts are activated when cues related to that behaviour are presented in another context (e.g. out-of-school)^{18,21,24,25,37}. This prediction forms the basis of the trans-contextual effect and the second premise of the TCM.

Social Cognition Beliefs

The final proposition of the TCM predicts that autonomous motivation with respect to performing a behaviour in an out-of-school context predicts subsequent performance of those activities mediated by the belief-based determinants of the behaviour. This prediction is based on an integration of the tenets of SDT¹⁹ and TPB²⁰. The mechanism behind this proposition is that individuals tend to align their beliefs about performing future behaviours with their motives. This alignment is strategic because it enables individuals to organise their beliefs and intentions with respect to performing the behaviour in future. If their motivation toward the behaviour in question is autonomous and the behaviour is viewed as need satisfying, then their beliefs are likely aligned toward performing the behaviour in future, facilitating performance of the need satisfying behaviour. In the TCM, the beliefs are represented by the social cognition beliefs from the TPB: attitudes (individuals' instrumental and affective evaluation of the behaviour), subjective norms (individuals' perceptions that significant others want them to perform the behaviour), and perceived behavioural control (PBC; individuals' perceived capability to perform the behaviour)^{18,22,38,39}. The effect of autonomous motivation on behavioural intention (i.e., one's willingness and planning to perform the behaviour in the future) is mediated by the social cognition beliefs. For example, students with autonomous motives toward specific behaviours would be likely to report attitudes, subjective norms and PBC consistent with performing the behaviours, and form intentions to perform the behaviours in future^{30,40-42}. Finally, consistent with the TPB, intentions are the most proximal determinant of behaviours, and mediate effects the beliefs on behaviours. Research, including a recent panel study in sport injury prevention, supported these predictions and the temporal ordering of the proposed effects⁴³. Some theorists argue that subjective norms may reflect perceived social pressure which

should be aligned closer with controlled motivation than autonomous motivation^{18,44}. However, studies have demonstrated that subjective norms positively correlated with both controlled and autonomous forms of motivation^{37,38,45,46}. Overall, autonomous motivation is a more consistent positive predictor of social cognition beliefs, intentions, and behaviours than controlled motivation, so building an intervention that fosters autonomous motivation by satisfying the basic psychological needs might serve as a potential solution for promoting one's attitude, subjective norms, and PBC of the given behaviour.

Evidence for the TCM

Research using the TCM as the framework for health promotion has been growing over the past decade and the model has been applied in multiple contexts, including physical activity¹⁶, anti-doping in sport³⁷, injury rehabilitation²⁴, academic performance^{22,23}, and sport injury prevention³⁹. Findings from this research has consistently supported the premises of the model including links between perceived need support and autonomous motivation in the initial context (e.g. education, school), trans-contextual relations between autonomous motivation (e.g., across educational and out-of-school contexts), and indirect relations between autonomous motivation in the related context (e.g., out-of-school, leisure time) and behaviours performed in that context mediated by beliefs and intentions from the TPB. Research has also supported invariance in the relations across studies and national groups²⁶. However, to date, few studies have used the model as a basis for intervention or demonstrated how changing key constructs in the model (e.g., perceived need support, autonomous motivation) affects change in key outcomes (e.g., intentions and behaviours). Such research will also provide more robust evidence for the proposed ordering of constructs in the model and potential causal effects, which cannot be ascertained from correlational data.

The Present Study

In the current study, we developed and tested the efficacy of a theory-driven intervention based on the TCM. The intervention aimed to promote secondary school students' autonomous motivation and intentions toward, and actual participation in, sport injury prevention behaviour via the provision of psychological need support training of PE teachers. The intervention consisted of a face-to-face workshop and a theory-driven smartphone application to promote psychological need supportive style of PE teachers in teaching sport injury prevention among secondary school students. We hypothesised that the intervention would facilitate students' autonomous motivation and social cognition pattern of sport injury prevention according to the psychological mechanism proposed in the TCM^{18,23}. Based on the TCM¹⁸, we proposed the following hypotheses:

H1: The intervention would have a positive and significant direct effect on students' perceptions of psychological need support for sport injury prevention offered by their PE teachers;

H2: The intervention would have positive and significant indirect effects on changes in students' in-school autonomous motivation, and out-of-school autonomous motivation, attitude, subjective norm, PBC, intention and behaviour regarding sport injury prevention.

Method

Participants and Recruitment Procedures

We sent out invitations to 462 secondary schools in Hong Kong inviting them to participate in the study. Three schools and their PE teachers ($N = 6$) agreed to participate in the

study. Non participating schools ($N = 359$) either did not respond or declined the invitation due to a busy schedule and for logistical reasons. Lower form secondary school students (Secondary 1 to Secondary 3) from participating schools were eligible to take part in the study. We focused on this age group because it is the beginning stage of secondary school education where sport safety is especially important for reducing the risk of sport injury in the later stages of physical education^{14,47}. Invitation and informed-consent forms were sent to the students and their parents. Finally, 1,168 junior (Secondary 1 to Secondary 3, equivalent to 7th to 9th grade in the US school system) secondary school students ($M_{age} = 13.322 \pm 1.045$, range = 12 to 16; female = 51.721%) and their parents signed the informed-consent form and agreed to take part in the study. The student participants had to attend two compulsory PE lessons per teaching week. According to baseline assessments, 74.882% of participants took part in sports or physical activities outside of school. Specifically, they spent 3.561 (SD = 2.908) hours on sport or physical activities every week, and experienced 1.268 (SD = 3.376) sport injuries, defined as “injured during any sports” in the past 6 months on average. It is important to note that data from the control group in the current study was previously reported in a prospective study on the predictive validity used for analysing the longitudinal relationships of the TCM over 3-month in a sport injury prevention context¹⁵. The previous study was correlational in design¹⁵ and did not test hypotheses relating to the effects of changing the TCM variables through intervention on injury prevention behaviour. Our current study makes an original contribution to knowledge because it is the first to test whether manipulating psychological need support in a sport injury prevention setting led to change in TCM variables and sport injury preventive behaviour. Our findings may offer formative evidence on how the TCM can guide interventions to promote behaviour change in a sport injury prevention setting in schools⁴⁸.

Study Design and Procedure

Ethical approval was obtained from the first author's institution [approval number = EA1604014]. The current study was a 3-month cluster randomised control trial with two waves of assessment (i.e., at baseline pre-intervention and at 3-months post-intervention). Participating schools were randomly assigned to either intervention or control condition of the intervention using a computer ballot by an independent research assistant. The randomisation resulted in one school being allocated to the treatment condition and two schools to the control condition. The two PE teachers from the school allocated to the treatment condition received the intervention workshop and the smartphone phone application (namely, "Sport Safety Easy") after the baseline assessment. Student participants were asked to complete a survey package that measured the psychological variables of the TCM (e.g., psychological need support, motivation, social cognition variables) at baseline and follow-up assessment occasions. A summary of school, teacher and participant flow through the study is presented in Figure 1.

Measures¹

Psychological Need Support. We measured participants' perception of PE teachers' psychological need support using the sport injury prevention version of the Health Care Climate Questionnaire (HCCQ)⁴⁹. The six-item Chinese version of HCCQ has been applied in sport injury prevention contexts and has reported good internal consistency and validity^{24,31}. Participant responses were provided on seven-point scales (1 = *not at all true* to 7 = *very true*).

Sport Injury Prevention Motivation. We used 6 items from the Chinese version for the Treatment Self-Regulation Questionnaire⁵⁰ to measure participants' autonomous motivation (6

¹Complete study measures and their detailed description (Appendix I) are available online at <https://osf.io/gw3cu/>.

items) to prevent sport injuries^{24,31,42}. In this study, participants were asked to complete the 6 items of the autonomous motivation scale twice, once for in-school and once for out-of-school sport injury prevention. Participant responses were provided on seven-point scales (1 = *not at all true* to 7 = *very true*).

Social Cognition Variables. Items assessing the TPB constructs were developed according to standardized guidelines⁵¹ with the behaviour of interest “*follow all required safety procedures to reduce the likelihood or severity of injury*”. Participants completed measures of attitude (6 items), subjective norms (3 items), PBC (5 items), and intention (3 items) with responses provided on seven-point scales (e.g., 1 = *strongly disagree* to 7 = *strongly agree*). Participants completed Chinese versions of the measures previously developed for use in injury prevention contexts^{24,31}.

Behaviour. We used the Self-Reported Injury Prevention Adherence Scale³⁹ to evaluate students’ sport injury prevention behaviour. Participants completed the Chinese version of the scale developed in previous studies^{15,39}. The scale consists of 8 items measuring participants’ effort (4 items) and frequency (4 items) of preventing sport injury (e.g., following all required safety procedures, seeking safety advice from others, and avoiding re-injury). Participant responses were provided on seven-point scales (1 = *never/minimum effort* to 7 = *very often/maximum effort*).

Intervention Materials

The intervention programme consisted of two components, a workshop and a smartphone application. Each aimed to promote participating PE teachers in schools assigned to the treatment

group to use a psychological need supportive style in teaching sport injury prevention in their PE classes.

Workshop. The workshop was a face-to-face session with the PE teachers facilitated by the first author and a trained research assistant. In the workshop, the PE teachers were provided with information on sport injury prevention, including an introduction to motivation, instruction on how to be psychological need supportive in teaching sport safety, different warm-up protocols⁵² (e.g. FIFA 11+⁹), and information reinforcing sport safety techniques (e.g., landing techniques and cool down). The smartphone application was installed in the smartphones of PE teachers in the intervention schools, and they were given a tour on its use to support their need supportive teaching of injury prevention as part of the intervention. The workshop lasted for approximately one and half hour. The educational materials of this workshop are provided in Appendix II (<https://osf.io/gw3cu/>).

Smartphone Application. We developed “Sport Safety Easy”, a smartphone application based upon the concepts of the TCM and findings of previous studies on need supportive instructional styles^{12,18}. The smartphone application aimed to facilitate PE teachers’ need supportive style in teaching sport injury prevention in their regular PE lessons. The smartphone application included information on the causes of sport injury, treatment of sport injury, sport injury prevention methods, and demonstration videos on sport injury prevention from the FIFA 11+ programme^{52,53}. The application also introduced a number of strategies and concepts related to psychological need supportive teaching style in a sport injury prevention context. The application highlighted the principles behind, and importance of, psychological need support, provided examples on how to be need supportive, gave scenarios that PE teachers might encounter when teaching sport injury prevention, and listed the pros and cons for teaching sport

injury prevention. The application also provided ongoing support through daily notifications to support PE teachers. Screenshots of the smartphone application are presented in Appendix III (<https://osf.io/gw3cu/>).

Data Analysis

Preliminary analyses consisted of descriptive statistics of the TCM variables and independent *t*-tests. There were no significant differences on study variables between the intervention and control group during the baseline assessment. We conducted path analysis to examine the goodness-of fit and parameter estimates (i.e., direct and indirect effects) of a model specifying the hypothesised effects of the intervention on TCM constructs and related mediation effects. The analysis was conducted using Mplus version 7.2 with a maximum likelihood estimation method. Missing data were imputed using the full-information maximum likelihood method⁵⁴. Intervention effects were tested using a dummy-coded variable (i.e., 0 = control group; 1 = treatment group) as a direct predictor of students' perceived psychological need support (H1) and indirectly on other TCM variables (H2). In order to examine intervention effects on changes in the TCM variables and behaviours, we computed standardised residual change scores for all model variables^{55,56}. Change scores were generated by regressing the post-test measures on the baseline measures (i.e., a positive value indicated an increase or positive change over time) for each variable. Such change scores have been suggested to be a more reliable score than simple difference scores⁵⁷. We used the conventional fit indices to assess the model fit⁵⁸, including the comparative fit index (CFI), Tucker-Lewis index (TLI), root mean square error of approximation (RMSEA), and standardised root mean square residual (SRMR). Traditional cut-off criteria for CFI and TLI (i.e., .900), and for RMSEA and SRMR (i.e., .080) were applied to indicate acceptable fit⁵⁸.

Results

Preliminary Analyses

Baseline characteristics and sample mean differences of intervention and control group are displayed in Table 1. Independent *t*-tests showed there was no group differences on the demographic and psychological variables. Descriptive statistics and zero-order correlation matrix of the residual change scores of the TCM variables are presented in Table 2, and that of the TCM variables in T0 and T1 are available online (<https://osf.io/gw3cu/>).

Intervention Effects

The proposed TCM model displayed adequate fit to the data, $\chi^2 = 143.080$, $df = 19$, CFI = .956, TLI = .916, RMSEA = .078 [90% CI = .066 to .090], SRMR = .058. Standardized parameter estimates (β) for model effects and explained variance (R^2) in each dependent variable in the model are presented in Figure 2. In support of H1, the intervention had a positive and significant direct effect on the increase of PE teachers' psychological need support ($\beta = .064$, $p = .020$). In congruence with H2, the intervention had positive and significant indirect effects on the increase in students' in-school autonomous motivation ($\beta = .027$, $p = .020$), out-of-school autonomous motivation ($\beta = .015$, $p = .020$), attitude ($\beta = .008$, $p = .021$), subjective norms ($\beta = .009$, $p = .021$), PBC ($\beta = .008$, $p = .022$), intention ($\beta = .008$, $p = .022$), and sport injury prevention behaviour ($\beta = .002$, $p = .032$). Table 3 displays the parameter estimates and 95% confidence intervals of the model indirect effects. H2 was supported by all positive and statistically significant pathways within the TCM using the change scores of the TCM variables. In addition, and consistent with TCM premises, psychological need support predicted in-school autonomous motivation ($\beta = .415$, $p < .001$). In-school autonomous motivation predicted out-of-

school autonomous motivation ($\beta = .560, p < .001$). Out-of-school autonomous motivation predicted attitude ($\beta = .541, p < .001$), subjective norms ($\beta = .589, p < .001$), and PBC ($\beta = .530, p < .001$). Attitude ($\beta = .086, p < .001$), subjective norms ($\beta = .599, p < .001$), and PBC ($\beta = .201, p < .001$) predicted intention and intention predicted sport injury prevention behaviour ($\beta = .262, p < .001$).

Discussion

The objective of the current study was to develop and test the efficacy of a TCM-based intervention that aimed to promote sport injury prevention behaviours among secondary school students. The TCM-based intervention consisted of a face-to-face workshop and a smartphone application that supported PE teachers' use of psychological need supportive style when teaching sport injury prevention in secondary school PE lessons. The intervention was tested in a three-month cluster-randomized controlled design with schoolteachers and their students assigned to receive either the intervention or a no-intervention control. A path analysis of data collected on measures of students' TCM constructs and physical activity participation at baseline and at three month post-intervention follow-up supported the hypothesised direct and indirect effects of the intervention on change in these variables. This consistent pattern of results demonstrated that the TCM-based intervention aimed at promoting PE teachers' psychological need supportive style in teaching sport injury prevention was related to changes in their students' perceived autonomy support, autonomous motivation across school and out-of-school contexts, social cognition beliefs, intention, and sport injury prevention behaviour. Our intervention provided preliminary evidence to support the predictive validity of TCM under conditions of change, and the utility of TCM in guiding the development of an efficacious mobile health behaviour change intervention in a sport injury prevention context.

Consistent with previous SDT-based interventions, our study was effective in increasing students' perceived psychological need support while controlling for baseline values^{49,56,59}. Based on meta-analyses of need supportive interventions^{60,61}, the combination of a workshop and the "Sport Safety Easy" smartphone app to promote psychological need supportive behaviours in teachers seemed to work well in promoting changes in students' perceived psychological need support. The approach deviates from typical means to deliver SDT-based interventions which often consist only of one-off workshops⁶². Yet, this design is consistent with the suggestion that such interventions would be more effective when supported by supplementary follow-up sessions or content⁶⁰, and our findings seem to support this proposition. A major advantage of the use of the app alongside the workshop is that it provided ongoing support for the intervention content with daily supportive notifications, and ultimately might serve to prolong and provide continuous support for the intervention⁶⁰. It also enabled inclusion of more varied content such as hypothetical scenarios and opportunities to demonstrate/practice need supportive styles in teaching sport injury prevention. However, we did not collect any data on PE teachers' experience and personal opinions on the workshop content and usability of the app and is an avenue for future research. Such data will provide important information of how the content of the need supportive intervention is accepted and tolerated, and how support activities such as the app may assist in assimilation and application of the intervention content.

Consistent with our hypotheses, the intervention also had positive and significant indirect effects on change in the TCM constructs. Specifically, the TCM intervention was indirectly associated with better in-school and out-of-school autonomous motivation, social cognition beliefs, intention, and behaviour of sport injury prevention. Findings are consistent with

correlational data on TCM relations with the added advantages of demonstrating how manipulation of key constructs in the model affects change in model constructs in sport injury prevention settings^{31,39}. Although the indirect effects of the intervention on the TCM variables were small, it must be stressed that effect sizes of indirect effects should not be interpreted in the same way as direct effects, given that indirect effects are multiplicative composites of a number of separate effect sizes. The key message is that the general pattern of results using an intervention and change scores were consistent with previous correlational studies that examined relations among the TCM variables²²⁻²⁴. Current findings suggest that the TCM may have utility in promoting development of need supportive interventions and explaining their effects on behaviour. Potentially, the current findings may extrapolate to developing interventions based on the TCM more broadly, for example, in representative samples of schools, and also in other contexts in which the TCM has been applied such as physical activity¹⁷, myopia prevention³⁸, and other educational contexts^{22,63}.

It is also worth noting that predicted relations among TCM model constructs were positive and statistically significant, consistent with previous studies^{15,22,23,25}. Importantly, these effects used change scores which contrasts with the typical approach. Findings suggest that the model may be effective in modelling change in constructs over time, beyond the mere 'static' prediction offered in correlational studies¹⁸. Results are consistent with recent research which has also provided generalized support for the efficacy of the model when accounting for temporal change in physical activity across PE and leisure-time contexts⁶⁴.

Limitations and Recommendations for Future Research

It is important to acknowledge some key limitations in the current study which may affect interpretation. First, our study was not randomised at the level of the participant, but at the

school level, and only included three secondary schools. Within-cluster correlations among study measures may have affected the statistical power of our study to detect effects and the estimates of intervention effects⁶⁵.

Second, given the number of schools, it is also important to note that we cannot infer the current intervention effects will generalise to a broader sample of schools in Hong Kong or more broadly. Such generalisation would only be warranted after further application of the intervention in a larger, representative sample of schools. However, the efficacy of the intervention identified in the current findings paves the way for such a broader application and provides in-principle support for the predicted effects.

Third, we were unable to determine the extent of adoption of the intervention materials and implementation of the recommended psychological need supportive teaching strategies by teachers allocated to the treatment condition. We did not include measures evaluating the frequency of use of the smartphone application, nor did we monitor the extent to which PE teachers implement the techniques they learned in their PE classes. Future studies should account for frequency of use of the smartphone app through monitoring. For example, researchers should note how often teachers accessed the app, the total time they spent on the app, and completion of viewing the smartphone materials. They should also should implement assessment of PE teachers' adherence and motivation toward the intervention programme, and include means to evaluate PE teachers' psychological need supportive teaching style prior to the intervention and at follow-up. This would provide important fidelity and manipulation check data, essential to establish intervention efficacy.

Fourth, the current study design was unable to detect which interventional components, face-to-face workshops or smartphone application, yielded a larger effect on teachers'

psychological need support. Future studies are encouraged to test the independent effects of individual intervention components using different study designs (e.g., factorial designs), to increase the efficiency of interventions ⁶⁶.

Fifth, our study did not include non-self-report measures of students' sport injury prevention behaviour. It is important to note that self-report behavioural measures have utility and validity ⁶⁷, and often differences in self-report measures can be attributed to differences in reliability and mode of delivery rather than systematic bias ⁶⁸. Nevertheless, the possibility of self-serving bias and socially desirable responding is still a threat to study validity ⁶⁹. For example, the use of psychometric scales to measure study variables might lead to consistency tendency in responses which artificially inflates the covariance of participants' responses ^{42,70}. Therefore, we would encourage researchers to measure students' sport injury prevention behaviour using non-self-report measures (e.g., observation) and include other indicators such as sport injury rate, severity, and types of prevention techniques adopted in future studies. Since the current intervention focused on promoting students' sport injury prevention behaviours, sport injury outcomes (i.e., sport injury rate and severity) were not recorded. We were, therefore, unable to test if the intervention or the psychological variables of the TCM were linked to the reduction of sport injury. Yet, previous studies have provided evidence regarding the effects of psychological variables on the rates of sport injury ^{10,11}. Future studies should investigate if the intervention is effective in reducing the incidence of sport injury with a long-term follow-up assessment.

Sixth, no treatment was provided to the control group. This design might limit the implications of the current study because it is possible that simply providing the teachers the intervention content related to preventing sports injuries may have been just as effective ⁷¹.

However, we contend that the current study has inherent value because it demonstrates the efficacy of the intervention in populations where there is little or no alternative intervention or ‘usual care’. Seventh, it is also important to note that the current intervention only focused on fostering a narrow set of need supportive behaviours in PE teachers. Future interventions may be more elaborate, incorporating a greater number of motivational and change strategies aligned with SDT. In particular, future studies may explore the effectiveness of introducing other change strategies such as using non-controlling language, provision of meaningful rationales, organisation of co-operation tasks, and avoidance of peer-competition into theory-driven interventions for promoting sport injury prevention among PE students ^{34,61}.

Finally, we could not establish the casual relationship between the mediators and the outcomes because our statistical analysis may violate the ‘sequential ignorability’ assumption ⁷². Specifically, randomisation was confined to the dummy-coded intervention variable; however, the levels of the mediators, namely psychological need support, autonomous motivation in both contexts and the social cognition beliefs, were not directly randomised. Obscure confounders may affect the links between the mediators and the outcomes and hence causalities were yet to demonstrate. To address this limitation, future studies are suggested to adopt comprehensive structural equation models, including the principal stratification approach and/or instrumental variable method ^{61,72}.

Perspective

This study developed and tested the efficacy of an intervention that trained PE teachers to be need supportive based on the TCM in promoting secondary school PE students’ sport injury prevention behaviours. Findings support the positive effects of the intervention on PE students’ perceived psychological need support from their teachers, which was indirectly related to

autonomous motivation, social cognition beliefs, and intention toward, and actual participation in, sport injury prevention behaviours. Findings may imply that supporting students' psychological needs may not only foster better in-school autonomous motivation, but it may also promote out-of-school motivation, social cognition beliefs, intention, and behaviour of sport injury prevention. Results also highlight the importance of PE teachers' psychological need support in promoting sport injury prevention behaviours. Psychological need supportive strategies, such as developing game-like warm-up programmes, actively listening to students' concerns, and promoting self-comparison instead of comparing with others, are suggested to be effective in enhancing students' autonomous motivation³⁴. The study also provided support for TCM predictions using change scores. Results provide some support for the use of TCM as a basis for the development of interventions that promote PE students' sport injury prevention in an out-of-school context. The current findings lay the groundwork for a broader test of TCM-based interventions to prevention sport injury in representative sample of school students. It might be useful in to inform TCM-based interventions in other educational settings, such as science and mathematics education,^{22,63} physical education,¹⁷ and university education²³.

Conflict of Interest

Authors declare that they have no conflict of interest.

References

1. Sheu Y, Chen L-H, Hedegaard H. Sports-and Recreation-related Injury Episodes in the United States, 2011-2014. *National health statistics reports*. 2016(99):1-12.
2. Kreisfeld R, Harrison JE, Pointer S. Australian sports injury hospitalisations 2011-12. 2014.
3. Bauer R, Steiner M, Kisser R, Macey S, Thayer D. Accidents and injuries in the EU. Results of the EuroSafe Reports. *Bundesgesundheitsblatt, Gesundheitsforschung, Gesundheitsschutz*. 2014;57(6):673-680.
4. Van Mechelen W, Hlobil H, Kemper HC, Voorn WJ, de Jongh HR. Prevention of running injuries by warm-up, cool-down, and stretching exercises. *Am J Sports Med*. 1993;21(5):711-719.
5. Emery CA, Roy T-O, Whittaker JL, Nettel-Aguirre A, Van Mechelen W. Neuromuscular training injury prevention strategies in youth sport: a systematic review and meta-analysis. *Br J Sports Med*. 2015;49(13):865-870.
6. Lopes TJA, Simic M, Myer GD, Ford KR, Hewett TE, Pappas E. The effects of injury prevention programs on the biomechanics of landing tasks: a systematic review with meta-analysis. *Am J Sports Med*. 2018;46(6):1492-1499.
7. Macnab A, Smith T, Gagnon F, Macnab M. Effect of helmet wear on the incidence of head/face and cervical spine injuries in young skiers and snowboarders. *Inj Prev*. 2002;8(4):324-327.
8. Lauersen JB, Andersen TE, Andersen LB. Strength training as superior, dose-dependent and safe prevention of acute and overuse sports injuries: a systematic review, qualitative analysis and meta-analysis. *Br J Sports Med*. 2018;52(24):1557-1563.
9. Steffen K, Emery CA, Romiti M, et al. High adherence to a neuromuscular injury prevention programme (FIFA 11+) improves functional balance and reduces injury risk in Canadian youth female football players: a cluster randomised trial. *Br J Sports Med*. 2013;bjsports-2012-091886.
10. Tranaeus U, Ivarsson A, Johnson U. Evaluation of the effects of psychological prevention interventions on sport injuries: A meta-analysis. *Science & Sports*. 2015;30(6):305-313.
11. Ivarsson A, Johnson U, Andersen MB, Tranaeus U, Stenling A, Lindwall M. Psychosocial factors and sport injuries: meta-analyses for prediction and prevention. *Sports Med*. 2017;47(2):353-365.
12. Lee ASY, Standage M, Hagger MS, Chan DKC. Sport injury prevention in-school and out-of-school? A qualitative investigation of the trans-contextual model. *PLoS ONE*. 2019;14(9).
13. The Curriculum Development Council. Physical Education Key Learning Area Curriculum Guide (Primary 1 – Secondary 6). In: Bureau TE, ed. Hong Kong 2017.
14. Emery CA, Tyreman H. Sport participation, sport injury, risk factors and sport safety practices in Calgary and area junior high schools. *Paediatr Child Health*. 2009;14(7):439-444.
15. Lee ASY, Standage M, Hagger MS, Chan DKC. Predictors of In-School and Out-of-School Sport Injury Prevention: A Test of The Trans-Contextual Model. *Scandinavian Journal of Medicine & Science in Sports*. 2020.

16. Hagger MS, Chatzisarantis NL, Culverhouse T, Biddle SJ. The processes by which perceived autonomy support in physical education promotes leisure-time physical activity intentions and behavior: a trans-contextual model. *J Educ Psychol.* 2003;95(4):784.
17. Hagger M, Chatzisarantis NL, Hein V, et al. Teacher, peer and parent autonomy support in physical education and leisure-time physical activity: A trans-contextual model of motivation in four nations. *Psychol Health.* 2009;24(6):689-711.
18. Hagger MS, Chatzisarantis NL. The trans-contextual model of autonomous motivation in education: Conceptual and empirical issues and meta-analysis. *Rev Educ Res.* 2016;86(2):360-407.
19. Deci EL, Ryan RM. The general causality orientations scale: Self-determination in personality. *J Res Pers.* 1985;19(2):109-134.
20. Ajzen I. The theory of planned behavior. *Organ Behav Hum Decis Process.* 1991;50(2):179-211.
21. Vallerand RJ. Deci and Ryan's self-determination theory: A view from the hierarchical model of intrinsic and extrinsic motivation. *Psychol Inq.* 2000;11(4):312-318.
22. Hagger MS, Hamilton K. Motivational predictors of students' participation in out-of-school learning activities and academic attainment in science: An application of the trans-contextual model using Bayesian path analysis. *Learn Individ Differ.* 2018;67:232-244.
23. Chan DKC, Yang SX, Hamamura T, et al. In-lecture learning motivation predicts students' motivation, intention, and behaviour for after-lecture learning: Examining the trans-contextual model across universities from UK, China, and Pakistan. *Motiv Emot.* 2015;39(6):908-925.
24. Chan DKC, Hagger MS. Autonomous forms of motivation underpinning injury prevention and rehabilitation among police officers: An application of the trans-contextual model. *Motiv Emot.* 2012;36(3):349-364.
25. Chan DKC, Hagger MS, Spray CM. Treatment motivation for rehabilitation after a sport injury: Application of the trans-contextual model. *Psychol Sport Exerc.* 2011;12(2):83-92.
26. Hagger MS, Chatzisarantis NL, Barkoukis V, Wang C, Baranowski J. Perceived autonomy support in physical education and leisure-time physical activity: a cross-cultural evaluation of the trans-contextual model. *J Educ Psychol.* 2005;97(3):376.
27. Ryan RM, Deci EL. Intrinsic and extrinsic motivations: Classic definitions and new directions. *Contemp Educ Psychol.* 2000;25(1):54-67.
28. Deci EL, Ryan RM. Facilitating optimal motivation and psychological well-being across life's domains. *Can Psychol.* 2008;49(1):14.
29. Deci EL, Ryan RM. Self-determination theory: A macrotheory of human motivation, development, and health. *Can Psychol.* 2008;49(3):182.
30. Lee ASY, Yung PS-H, Mok K-M, Hagger MS, Chan DKC. Psychological processes of ACL-patients' post-surgery rehabilitation: A prospective test of an integrated theoretical model. *Social Science & Medicine.* 2020.
31. Chan DKC, Hagger MS. Self-determined forms of motivation predict sport injury prevention and rehabilitation intentions. *J Sci Med Sport.* 2012;15(5):398-406.
32. Ryan RM. Psychological needs and the facilitation of integrative processes. *J Pers.* 1995;63(3):397-427.
33. Deci EL, Ryan RM. The " what " and " why " of goal pursuits: Human needs and the self-determination of behavior. *Psychol Inq.* 2000;11(4):227-268.

34. Teixeira PJ, Marques MM, Silva MN, et al. Classification of Techniques Used in Self-Determinationtheory-Based Interventions in Health Contexts: An Expert Consensus Study. *Motivation Science*. 2020.
35. Chan DKC, Keegan RJ, Lee ASY, et al. Toward a better assessment of perceived social influence: The relative role of significant others on young athletes. *Scandinavian Journal of Medicine & Science in Sports*. 2018.
36. Chan DKC, Lonsdale C, Ho PY, Yung PS, Chan KM. Patient motivation and adherence to postsurgery rehabilitation exercise recommendations: the influence of physiotherapists' autonomy-supportive behaviors. *Arch Phys Med Rehabil*. 2009;90(12):1977-1982.
37. Chan DKC, Dimmock J, Donovan R, Hardcastle S, Lentillon-Kaestner V, Hagger MS. Self-determined motivation in sport predicts anti-doping motivation and intention: A perspective from the trans-contextual model. *J Sci Med Sport*. 2015;18(3):315-322.
38. Chan DKC, Fung Y-K, Xing S, Hagger MS. Myopia prevention, near work, and visual acuity of college students: integrating the theory of planned behavior and self-determination theory. *J Behav Med*. 2014;37(3):369-380.
39. Chan DKC, Hagger MS. Transcontextual development of motivation in sport injury prevention among elite athletes. *J Sport Exerc Psychol*. 2012;34(5):661-682.
40. Chan DKC, Hagger MS. Theoretical integration and the psychology of sport injury prevention. *Sports Med*. 2012;42(9):725-732.
41. Chan DKC, Lee ASY, Hagger MS, Mok K-M, Yung PS-H. Social psychological aspects of ACL injury prevention and rehabilitation: An integrated model for behavioral adherence. *Asia-Pacific journal of sports medicine, arthroscopy, rehabilitation and technology*. 2017;10:17-20.
42. Chan DK, Ivarsson A, Stenling A, Yang SX, Chatzisarantis NL, Hagger MS. Response-order effects in survey methods: A randomized controlled crossover study in the context of sport injury prevention. *J Sport Exerc Psychol*. 2015;37(6):666-673.
43. Chan DKC, Zhang L, Lee ASY, Hagger MS. Reciprocal relations between autonomous motivation from self-determination theory and social cognition constructs from the theory of planned behavior: A cross-lagged panel design in sport injury prevention. *Psychol Sport Exerc*. 2020;48:101660.
44. Sheeran P, Norman P, Orbell S. Evidence that intentions based on attitudes better predict behaviour than intentions based on subjective norms. *Eur J Soc Psychol*. 1999;29(2-3):403-406.
45. Hamilton K, Kirkpatrick A, Rebar A, Hagger MS. Child sun safety: Application of an Integrated Behavior Change model. *Health Psychol*. 2017;36(9):916.
46. Chan DKC, Yang SX, Mullan B, et al. Preventing the spread of H1N1 influenza infection during a pandemic: autonomy-supportive advice versus controlling instruction. *J Behav Med*. 2015;38(3):416-426.
47. Caine D, Maffulli N, Caine C. Epidemiology of injury in child and adolescent sports: injury rates, risk factors, and prevention. *Clin Sports Med*. 2008;27(1):19-50.
48. Hagger M, Cameron L, Hamilton K, Hankonen N, Lintunen T. Handbook of behavior change. *New York, NY: Cambridge University Press DOI*. 2020;10:9781108677318.
49. Williams GC, Grow VM, Freedman ZR, Ryan RM, Deci EL. Motivational predictors of weight loss and weight-loss maintenance. *J Pers Soc Psychol*. 1996;70(1):115.

50. Levesque CS, Williams GC, Elliot D, Pickering MA, Bodenhamer B, Finley PJ. Validating the theoretical structure of the Treatment Self-Regulation Questionnaire (TSRQ) across three different health behaviors. *Health Educ Res.* 2006;22(5):691-702.
51. Ajzen I. Constructing a TPB questionnaire: Conceptual and methodological considerations. 2002.
52. Bishop D. Warm up II. *Sports Med.* 2003;33(7):483-498.
53. Thorborg K, Krommes KK, Esteve E, Clausen MB, Bartels EM, Rathleff MS. Effect of specific exercise-based football injury prevention programmes on the overall injury rate in football: a systematic review and meta-analysis of the FIFA 11 and 11+ programmes. *Br J Sports Med.* 2017;51(7):562-571.
54. Muthén L, Muthén B. Mplus. *The comprehensive modelling program for applied researchers: user's guide.* 2015;5.
55. Castro-Schilo L, Grimm KJ. Using residualized change versus difference scores for longitudinal research. *Journal of Social and Personal Relationships.* 2018;35(1):32-58.
56. Jacobs N, Hagger MS, Streukens S, De Bourdeaudhuij I, Claes N. Testing an integrated model of the theory of planned behaviour and self-determination theory for different energy balance-related behaviours and intervention intensities. *Br J Health Psychol.* 2011;16(1):113-134.
57. Cronbach LJ, Furby L. How we should measure" change": Or should we? *Psychol Bull.* 1970;74(1):68.
58. Hu Lt, Bentler PM. Cutoff criteria for fit indexes in covariance structure analysis: Conventional criteria versus new alternatives. *Struct Equ Model.* 1999;6(1):1-55.
59. Cheon SH, Reeve J, Lee Y, et al. Expanding autonomy psychological need states from two (satisfaction, frustration) to three (dissatisfaction): A classroom-based intervention study. *J Educ Psychol.* 2019;111(4):685.
60. Su Y-L, Reeve J. A meta-analysis of the effectiveness of intervention programs designed to support autonomy. *Educ Psychol Rev.* 2011;23(1):159-188.
61. Gillison FB, Rouse P, Standage M, Sebire SJ, Ryan RM. A meta-analysis of techniques to promote motivation for health behaviour change from a self-determination theory perspective. *Health psychology review.* 2019;13(1):110-130.
62. Fortier MS, Duda JL, Guerin E, Teixeira PJ. Promoting physical activity: development and testing of self-determination theory-based interventions. *International Journal of Behavioral Nutrition and Physical Activity.* 2012;9(1):20.
63. Hagger MS, Sultan S, Hardcastle SJ, Chatzisarantis NL. Perceived autonomy support and autonomous motivation toward mathematics activities in educational and out-of-school contexts is related to mathematics homework behavior and attainment. *Contemp Educ Psychol.* 2015;41:111-123.
64. Polet J, Lintunen T, Schneider J, Hagger MS. Predicting Change in Middle School Students' Leisure-Time Physical Activity Participation: A Prospective Test of the Trans-Contextual Model. *Journal of Applied Social Psychology.* 2020.
65. Donner A, Klar N. Pitfalls of and controversies in cluster randomization trials. *Am J Public Health.* 2004;94(3):416-422.
66. Collins LM, Trail JB, Kugler KC, Baker TB, Piper ME, Mermelstein RJ. Evaluating individual intervention components: making decisions based on the results of a factorial screening experiment. *Translational behavioral medicine.* 2014;4(3):238-251.
67. Osterberg L, Blaschke T. Adherence to medication. *N Engl J Med.* 2005;353(5):487-497.

68. Dang J, King KM, Inzlicht M. Why are self-report and behavioral measures weakly correlated? *Trends in cognitive sciences*. 2020;24(4):267-269.
69. Van de Mortel TF. Faking it: social desirability response bias in self-report research. *Australian Journal of Advanced Nursing, The*. 2008;25(4):40.
70. Chan DKC, Stenling A, Yusainy C, et al. Consistency tendency and the theory of planned behavior: a randomized controlled crossover trial in a physical activity context. *Psychol Health*. 2019:1-20.
71. Godin G, Sheeran P, Conner M, et al. Which survey questions change behavior? Randomized controlled trial of mere measurement interventions. *Health Psychol*. 2010;29(6):636.
72. MacKinnon DP, Pirlott AG. Statistical approaches for enhancing causal interpretation of the M to Y relation in mediation analysis. *Personality and Social Psychology Review*. 2015;19(1):30-43.

Table 1.

Descriptive statistics of the study variables

		Treatment Group	Control Group	Difference	
		(<i>N</i> = 392)	(<i>N</i> = 776)	<i>t</i>	<i>p</i>
Gender					
	Male	175 (44.757%)	386 (50.065%)	1.712	.087
	Female	216 (55.243%)	385 (49.935%)		
Age		13.342 (.970)	13.312 (1.082)	-.456	.648
Time in Sports (Minutes Per Week)		200.858 (165.720)	220.109 (178.531)	1.600	.110
Sport Injuries (last 6 months)		1.241 (3.487)	1.282 (3.322)	.193	.847
T0 Psychological Need Support		4.784 (1.329)	4.651 (1.270)	-1.658	.098
T1 Psychological Need Support		4.842 (1.295)	4.544 (1.380)	-3.309	.001
T0 Autonomous Motivation (IS)		4.951 (1.165)	5.002 (1.051)	.752	.452
T1 Autonomous Motivation (IS)		4.942 (1.099)	4.949 (1.078)	.098	.922
T0 Autonomous Motivation (OS)		4.863 (1.173)	4.878 (1.048)	.211	.833
T1 Autonomous Motivation (OS)		4.857 (1.141)	4.795 (1.109)	-.827	.408
T0 Attitude		5.026 (1.096)	5.031 (1.032)	.091	.928
T1 Attitude		5.035 (1.117)	5.007 (1.078)	-.383	.702
T0 Subjective Norms		4.640 (1.206)	4.700 (1.053)	.876	.381
T1 Subjective Norms		4.670 (1.405)	4.692 (1.088)	.427	.669
T0 PBC		4.804 (1.088)	4.810 (1.021)	.089	.929
T1 PBC		4.772 (1.153)	4.817 (.999)	.654	.513
T0 Intention		4.531 (1.242)	4.636 (1.085)	1.491	.136
T1 Intention		4.565 (1.196)	4.629 (1.080)	.857	.392
T0 Behaviours		3.974 (1.279)	4.095 (1.236)	1.559	.119
T1 Behaviours		4.186 (1.197)	4.116 (1.226)	-.857	.392

Note. Descriptive statistics of gender, age, time in sports, sport injuries (last 6 months) were taken from baseline. T0 = Baseline; T1 = 3-month follow-up. IS = in-school context; OS = Out-of-school context;

Table 2.

Descriptive statistics and zero-order correlation matrix of the residual change scores of the TCM variables (N = 1,168)

Variables	1	2	3	4	5	6	7	8
1. Psychological Need Support	–							
2. Autonomous Motivation (IS)	.415***	–						
3. Autonomous Motivation (OS)	.410***	.635***	–					
4. Attitude	.390***	.411***	.542***	–				
5. Subjective Norm	.378***	.469***	.589***	.464***	–			
6. PBC	.357***	.430***	.528***	.507***	.715***	–		
7. Intention	.364***	.466***	.585***	.466***	.783***	.673***	–	
8. Behaviour	.400***	.426***	.516***	.438***	.484***	.432***	.497***	–
Cronbach alpha	.938	.838	.868	.890	.822	.879	.915	.890
Mean	4.695	4.985	4.873	5.029	4.680	4.808	4.600	4.055
Standard Deviation	1.291	1.090	1.090	1.054	1.106	1.043	1.141	1.251

Note. Cronbach alpha, mean and standard deviation displayed in the table were using the baseline data. OS = in-school context; OS = out-of-school context; PBC = Perceived behavioural control.

*** $p < .001$

Table 3.

Results from the mediation analyses for the TCM for injury prevention

Paths	Mediator (s)	Indirect effects [95% CI]
Intervention → Auto (IS)	AS	.027* [.008-.046]
Intervention → Auto (OS)	AS, Auto (IS)	.015* [.005-.026]
Intervention → Attitude	AS, Auto (IS), Auto (OS)	.008* [.002-.014]
Intervention → Subjective norms	AS, Auto (IS), Auto (OS)	.009* [.003-.015]
Intervention → PBC	AS, Auto (IS), Auto (OS)	.008* [.002-.014]
Intervention → Intention	AS, Auto (IS), Auto (OS), Intention antecedents	.008* [.002-.013]
Intervention → Behaviour	AS, Auto (IS), Auto (OS), Intention antecedents, Intention	.002* [.000-.004]

Note. Intervention = Dummy-coded variable representing intervention effect; IS = in-school context; OS = Out-of-school context; AS = Autonomy Support; Auto = Autonomous motivation; PBC = Perceived behavioural control.

* $p < .05$

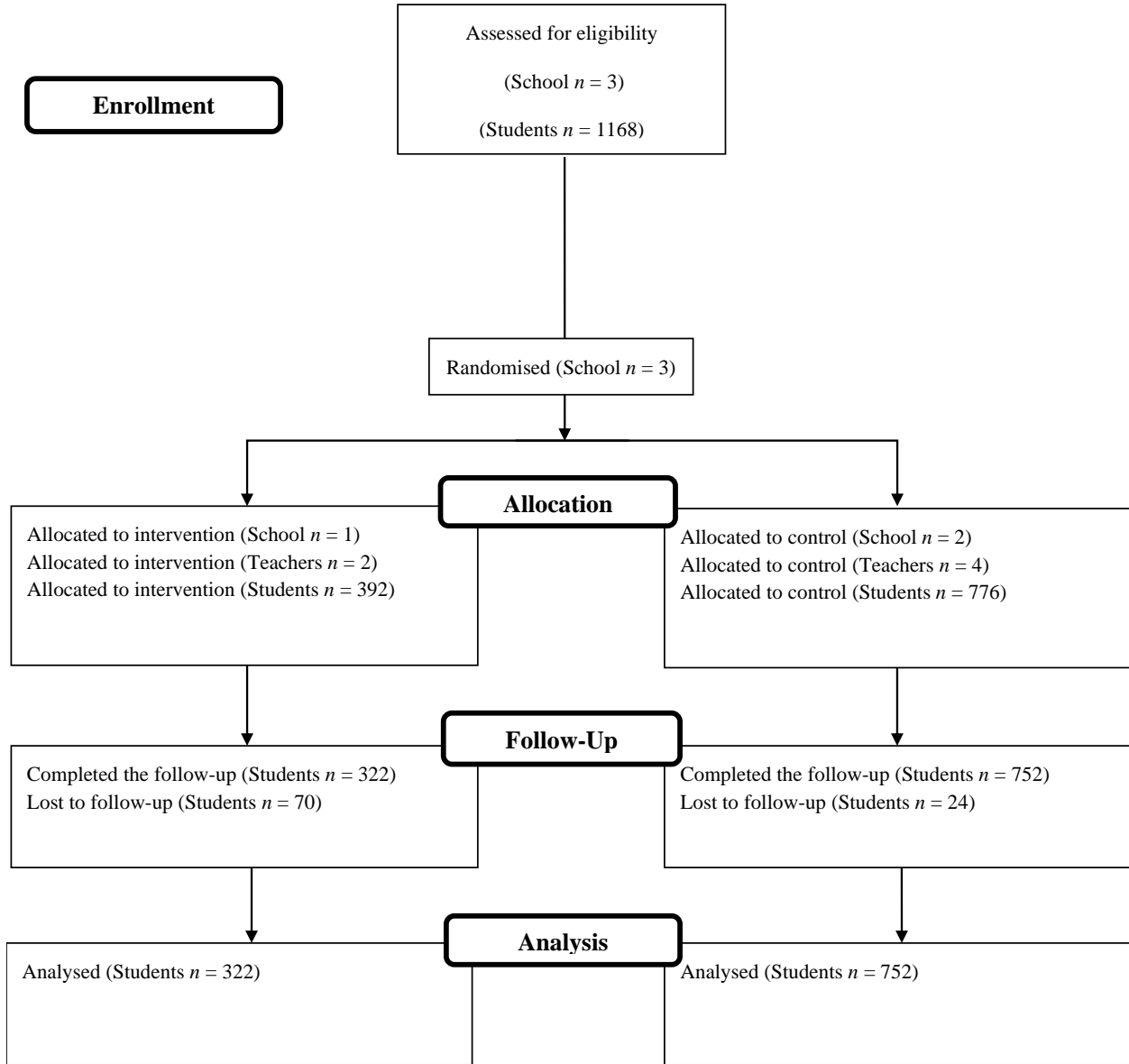


Figure 1. CONSORT flow diagram of the intervention driven by TCM for the promotion of sport injury prevention among secondary school students.

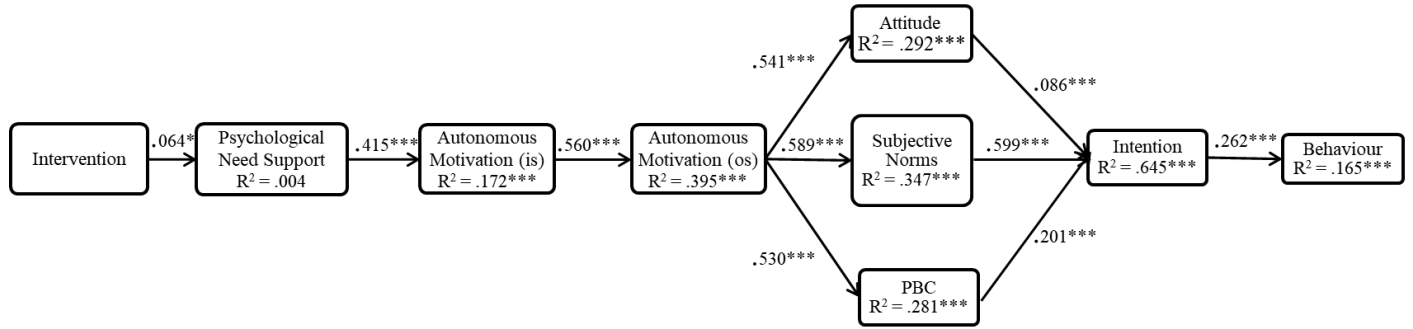


Figure 2. Trans-contextual model for sport injury prevention. All path estimates were hypothesised to be positive and significant. IS = In-school context; OS = Out-of-school context; PBC = Perceived behavioural control. * $p < .05$ ** $p < .01$