

UC San Diego

UC San Diego Previously Published Works

Title

Polycystic kidney disease: a Hippo connection

Permalink

<https://escholarship.org/uc/item/8805c3h4>

Journal

Genes & Development, 32(11-12)

ISSN

0890-9369

Authors

Ma, Shenghong

Guan, Kun-Liang

Publication Date

2018-06-01

DOI

10.1101/gad.316570.118

Copyright Information

This work is made available under the terms of a Creative Commons Attribution-NonCommercial License, available at <https://creativecommons.org/licenses/by-nc/4.0/>

Peer reviewed

Polycystic kidney disease: a Hippo connection

Shenghong Ma and Kun-Liang Guan

Department of Pharmacology, Moores Cancer Center, University of California at San Diego, La Jolla, California 92093, USA

Mutations in *PKD1* and *PKD2* are the leading cause of autosomal dominant polycystic kidney disease (ADPKD). In this issue of *Genes & Development*, a report by Cai and colleagues (pp. 781–793) reveals new insight into the molecular basis by which *PKD1* deficiency leads to cystic kidney pathogenesis. By using extensive mouse genetic analyses coupled with in vitro cystic assays, the investigators delineate a RhoA–YAP–c-Myc signaling axis as a key downstream from *PKD1* deficiency in ADPKD pathogenesis. Their findings provide evidence that the Hippo pathway could be a potential target for treating ADPKD.

Autosomal dominant polycystic kidney disease (ADPKD) is the most common human monogenic inherited systemic disorder with an occurrence of one in 400–1000 people worldwide (Chebib et al. 2015). The hallmark of ADPKD is the spontaneous formation and continuous enlargement of fluid-filled kidney cysts, culminating in end-stage renal disease (ESRD) in more than half of patients by age 60 (Grantham 2008). ADPKD is caused by mutations in either the *PKD1* or *PKD2* gene, encoding polycystin 1 (PC1) and PC2, respectively. PC1 and PC2 are multimembrane-spanning proteins that interact with each other (Qian et al. 1997). Loss-of-function mutations in either gene results in similar clinical symptoms (Grantham 2008). Decades after the discovery of *PKD1* and *PKD2* mutations, multiple signaling pathways have been linked to ADPKD, including Ca²⁺ signaling, cAMP, SRC, Wnt, and mTOR (Lemos and Ehrlich 2018). However, limited treatment options are currently available, and there is great interest in identifying novel molecular targets for ADPKD. In this issue of *Genes & Development*, Cai et al. (2018) discovered a functional connection between *PKD1* mutations and the Hippo pathway, which is best known for its function in organ size control, tissue homeostasis/regeneration, and cancer. Furthermore, extensive mouse genetic data and human patient sample analyses support a critical role of the Hippo pathway in ADPKD pathogenesis when *PKD1*

is mutated. This study provides strong evidence supporting a model that RhoA–YAP–c-Myc axis is a direct downstream target of *PKD1* mutations, and targeting the Hippo pathway could be valuable in treating *PKD1*-deficient ADPKD (Fig. 1).

Initially, the investigators performed gene set enrichment analysis (GSEA) on a previous human ADPKD polycystic kidney expression-profiling data set and discovered a strong enrichment of YAP/TAZ target genes. YAP/TAZ are transcriptional coactivators that mediate the majority of the functional output (if not the entire functional output) of the Hippo pathway. YAP/TAZ are inhibited by Hippo pathway-dependent phosphorylation and cytoplasmic localization. The investigators validated their findings in a transgenic ADPKD mouse model by spatiotemporally targeting *Pkd1* in the kidney tubular epithelium. *Pkd1* deletion caused strong YAP/TAZ dephosphorylation and nuclear localization, with a corresponding increase of YAP/TAZ target gene expression. Thus, *Pkd1* deficiency causes constitutive activation of YAP/TAZ during kidney cystogenesis.

The investigators then explored the functional relevance of YAP/TAZ activation in ADPKD. First, they asked whether activating YAP alone is sufficient to induce cystogenesis in the kidney. By using a drug-inducible YAP overexpression model in kidney tubular epithelium, dilation of the tubular epithelium was observed, which was also accompanied by increased cell proliferation. Second, the investigators deleted *Sav1*, a core component of the Hippo pathway and a negative regulator of YAP/TAZ, and observed phenotypes similar to YAP overexpression. Furthermore, the hyperproliferation and kidney tubule dilation phenotypes induced by *Sav1* mutants are completely blocked by loss of YAP. Moreover, loss of both YAP and TAZ greatly suppressed cyst formation by *Pkd1* deficiency. Together, these observations strongly support a key role of the Hippo pathway and a role for YAP/TAZ in cystogenesis associated with *Pkd1* mutant kidneys.

[Keywords: 3D culture; ADPKD; Hippo signaling; RhoA signaling; YAP/TAZ; c-Myc]

Corresponding author: kuguan@ucsd.edu

Article is online at <http://www.genesdev.org/cgi/doi/10.1101/gad.316570.118>.

© 2018 Ma and Guan This article is distributed exclusively by Cold Spring Harbor Laboratory Press for the first six months after the full-issue publication date (see <http://genesdev.cshlp.org/site/misc/terms.xhtml>). After six months, it is available under a Creative Commons License (Attribution-NonCommercial 4.0 International), as described at <http://creativecommons.org/licenses/by-nc/4.0/>.

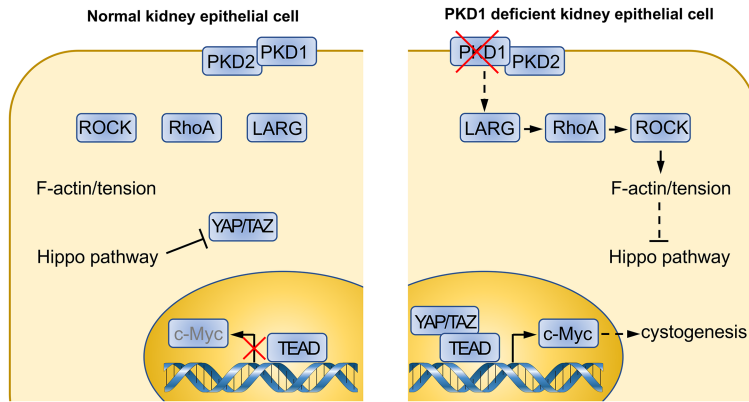


Figure 1. Altered Hippo pathway signaling contributes to the kidney cystogenesis in *Pkd1* mutant ADPKD. In kidney tubular epithelial cells, *Pkd1* deficiency leads to ADPKD. The procyst phenotype is mediated by hyperactivated YAP/TAZ and up-regulation of its transcriptional target, c-Myc. RhoGEF (guanine nucleotide exchange factor) LARG, RhoA, and ROCK (Rho-associated protein kinase) act downstream from *Pkd1* to regulate the Hippo pathway and YAP/TAZ.

The avidity of YAP/TAZ activation for the *Pkd1* mutant ADPKD prompted the investigators to investigate its transcriptional downstream effector. Among the genes induced by *Pkd1* deficiency, c-Myc is noteworthy because its activation in the kidney was reported to induce cystogenesis and tubular epithelial cell proliferation (Trudel et al. 1991). Cai et al. (2018) showed that c-Myc is a direct transcription target of YAP/TAZ. Strikingly, loss of c-Myc significantly suppressed the cyst formation phenotype in *Sav1* mutants as well as in *Pkd1* mutant kidneys, thereby defining a Hippo–YAP–c-Myc axis involved in kidney cystogenesis caused by *Pkd1* deficiency.

Although the core components of the Hippo pathway and YAP/TAZ have been studied extensively, the upstream pathway is more complex and not as well defined (Yu et al. 2015). To elucidate the mechanism by which *PKD1* deficiency activates YAP/TAZ, the investigators established an in vitro three-dimensional (3D) culture system that mimics *PKD1*-deficient cyst formation. Through an unbiased screening for kinase inhibitors, they discovered five chemicals that could inhibit cyst formation. Interestingly, all five inhibitors share a common target: the Rho-associated protein kinase (ROCK), which is a downstream effector of Rho and mediates the formation of actin stress fibers. Indeed, RhoA, MLC (myosin light chain), and F-actin are all activated and show apical enrichment in *Pkd1*-deficient mouse kidney cysts as well as in human ADPKD cyst samples. In addition, further studies revealed that RhoGEF (guanine nucleotide exchange factor) LARG links *Pkd1* deficiency to high RhoA activation. Reducing LARG protein levels inhibited RhoA activity as well as cyst formation induced by *Pkd1* mutation in vitro. These data fit nicely with the known function of RhoA in Hippo regulation. RhoA has been shown to activate YAP/TAZ by inhibiting the Hippo pathway, although the precise molecular mechanism is unclear.

Finally, to test the importance of RhoA–ROCK signaling in vivo, Cai et al. (2018) determined the effect of the ROCK inhibitor Y-27632 in the *Pkd1*-deficient ADPKD mouse model. Remarkably, Y-27632 treatment decreased YAP activity and c-Myc expression as well as ameliorated the *Pkd1* mutant phenotypes, including both epithelial cell proliferation and cyst formation. These genetic and

pharmacological data support a key role of RhoA and ROCK in ADPKD associated with *PKD1* mutation.

Altogether, Pan and colleagues (Cai et al. 2018) have identified a RhoA–ROCK–Hippo–YAP/TAZ–c-Myc signaling axis that is both required and sufficient to promote kidney cystogenesis in a *Pkd1* mutant ADPKD mouse model (Fig. 1). Mechanistically, *Pkd1* deficiency promotes cytoskeletal tension through a LARG–RhoA–ROCK pathway, which activates YAP/TAZ by inhibiting the Hippo pathway. The dephosphorylated YAP/TAZ are then translocated into the nucleus and bind with their transcription factor, TEAD, to induce expression of target genes, including c-Myc, which contributes to cystic kidney pathogenesis. These findings may aid future therapy, such as targeting ROCK or inhibiting YAP/TAZ for potential ADPKD treatment.

Despite the significant advances made in this study, several questions remain. For instance, Cai et al. (2018) used a homozygous *Pkd1* deletion mouse model, which showed a rapidly appearing and severe kidney cystic phenotype. However, patients with ADPKD are typically heterozygous, with one mutant allele, and disease progression is much slower. Similar studies using a *Pkd1* heterozygous mouse model might be warranted, as the heterozygous *Pkd1* mutation may better recapitulate genetic alterations in human ADPKD. Moreover, depletion of both YAP and TAZ does not completely block kidney cystogenesis and pathology in the *Pkd1* mutant mice, indicating that, in addition to YAP/TAZ hyperactivation, other alterations also play an important role in ADPKD caused by *PKD1* deficiency.

In addition, what is the molecular link between *Pkd1* deficiency and LARG–RhoA–YAP activation? An inhibitor targeting Src retards the renal cystic phenotype in a *Pkd1* heterozygous mouse model and has entered a phase 2 clinical trial to test its efficiency in ADPKD patients (Elliott et al. 2011). Previous reports have shown that Src can activate YAP (Enomoto and Igaki 2013; Kim and Gumbiner 2015; Taniguchi et al. 2015). As multiple mechanisms have been proposed for YAP regulation by Src, it is tempting to speculate about how Src is involved in YAP activation in ADPKD. Furthermore, multiple signaling pathways have been proposed to be deregulated and play a functional role in ADPKD, including Ca^{2+} , cAMP,

MAPK, JAK, SRC, STAT, Wnt, and mTOR (Lemos and Ehrlich 2018). Understanding how different signaling pathways, including the RhoA–YAP–c-Myc axis, are interconnected in *PKD1* deficiency will be critical to fully comprehend ADPKD.

Another interesting question raised by the present study is whether targeting the RhoA–YAP–c-Myc axis can block both the initiation and progression of ADPKD pathogenesis. Cai et al. (2018) targeted the RhoA–YAP–c-Myc axis from the start, when *Pkd1* is deleted. Clinically, therapeutic intervention will not be applied until ADPKD symptoms are apparent in the patient. Therefore, it is important to test whether targeting this axis at a later stage could also ameliorate the renal manifestations. Finally, since *Pkd2* mutations produced a similar pathology, it is important to test whether *Pkd2* mutations similarly affect the Hippo pathway.

Competing interest statement

K.-L.G. is a cofounder of and has equity interest in Vivace Therapeutics, Inc. The terms of this arrangement have been reviewed and approved by the University of California at San Diego in accordance with its conflict of interest policies.

Acknowledgments

K.-L.G. is supported by National Institutes of Health grants GM51586 and CA196878.

References

- Cai J, Song X, Wang W, Watnick T, Pei Y, Qian F, Pan D. 2018. A RhoA–YAP–c-Myc signaling axis promotes the development of polycystic kidney disease. *Genes Dev* (this issue). doi: 10.1101/gad.315127.118.
- Chebib FT, Sussman CR, Wang X, Harris PC, Torres VE. 2015. Vasopressin and disruption of calcium signalling in polycystic kidney disease. *Nat Rev Nephrol* **11**: 451–464.
- Elliott J, Zheleznova NN, Wilson PD. 2011. c-Src inactivation reduces renal epithelial cell-matrix adhesion, proliferation, and cyst formation. *Am J Physiol Cell Physiol* **301**: C522–C529.
- Enomoto M, Igaki T. 2013. Src controls tumorigenesis via JNK-dependent regulation of the Hippo pathway in *Drosophila*. *EMBO Rep* **14**: 65–72.
- Grantham JJ. 2008. Clinical practice. Autosomal dominant polycystic kidney disease. *N Engl J Med* **359**: 1477–1485.
- Kim NG, Gumbiner BM. 2015. Adhesion to fibronectin regulates Hippo signaling via the FAK–Src–PI3K pathway. *J Cell Biol* **210**: 503–515.
- Lemos FO, Ehrlich BE. 2018. Polycystin and calcium signaling in cell death and survival. *Cell Calcium* **69**: 37–45.
- Qian F, Germino FJ, Cai Y, Zhang X, Somlo S, Germino GG. 1997. PKD1 interacts with PKD2 through a probable coiled-coil domain. *Nat Genet* **16**: 179–183.
- Taniguchi K, Wu LW, Grivennikov SI, de Jong PR, Lian I, Yu FX, Wang K, Ho SB, Boland BS, Chang JT, et al. 2015. A gp130–Src–YAP module links inflammation to epithelial regeneration. *Nature* **519**: 57–62.
- Trudel M, D’Agati V, Costantini F. 1991. C-myc as an inducer of polycystic kidney disease in transgenic mice. *Kidney Int* **39**: 665–671.
- Yu FX, Zhao B, Guan KL. 2015. Hippo pathway in organ size control, tissue homeostasis, and cancer. *Cell* **163**: 811–828.