

UC Davis

UC Davis Previously Published Works

Title

Interactions of the Immune System with Skin and Bone Tissue in Psoriatic Arthritis: A Comprehensive Review

Permalink

<https://escholarship.org/uc/item/87w7v3r0>

Journal

Clinical Reviews in Allergy & Immunology, 51(1)

ISSN

1080-0549

Authors

Sukhov, Andrea
Adamopoulos, Iannis E
Maverakis, Emanuel

Publication Date

2016-08-01

DOI

10.1007/s12016-016-8529-8

Peer reviewed



Published in final edited form as:

Clin Rev Allergy Immunol. 2016 August ; 51(1): 87–99. doi:10.1007/s12016-016-8529-8.

Interactions of the immune system with skin and bone tissue in psoriatic arthritis: A Comprehensive Review.

Andrea Sukhov, BA¹, Iannis E Adamopoulos, DPhil², and Emanuel Maverakis, MD¹

¹Department of Dermatology, Division of Rheumatology, Allergy and Clinical Immunology, School of Medicine, University of California, Davis.

²Department of Internal Medicine, Division of Rheumatology, Allergy and Clinical Immunology, School of Medicine, University of California, Davis.

Abstract

Cutaneous psoriasis [e.g. psoriasis vulgaris (PsV)] and psoriatic arthritis (PsA) are complex heterogeneous diseases thought to have similar pathophysiology. The soluble and cellular mediators of these closely related diseases are being elucidated through genetic approaches such as genome-wide association studies (GWAS), as well as animal and molecular models. Novel therapeutics targeting these mediators (IL-12, IL-23, IL-17, IL-17 receptor, TNF) are effective in treating both the skin and joint manifestations of psoriasis, reaffirming the shared pathophysiology of PsV and PsA. However, the molecular and cellular interactions between skin and joint disease have not been well characterized. Clearly, PsV and PsA are highly variable in terms of their clinical manifestations and this heterogeneity can partially be explained by differences in HLA-associations (HLA-Cw*0602 versus HLA-B*27, for example). In addition, there are numerous other genetic susceptibility loci (*LCE3*, *CARD14*, *NOS2*, *NFKB1A*, *PSMA6*, *ERAP1*, *TRAF3IP2*, *IL12RB2*, *IL23R*, *IL12B*, *TNIP1*, *TNFAIP3*, *TYK2*) and geoepidemiologic factors that contribute to the wide variability seen in psoriasis. Herein we review the complex interplay between the genetic, cellular, ethnic and geographic mediators of psoriasis, focusing on the shared mechanisms of PsV and PsA.

Keywords

Psoriasis; psoriatic arthritis; HLA-B*27; IL-23/Th17; geoepidemiology

INTRODUCTION

Psoriatic arthritis (PsA) is a unique type of inflammatory arthritis that by definition requires the presence of cutaneous psoriasis. Though Moll and Wright were not the first to describe the relationship between cutaneous psoriasis and arthritis, they did provide the epidemiologic, clinical, radiologic and serologic evidence that defined PsA as a distinct

Corresponding Author: Dr. Emanuel Maverakis, Department of Dermatology, University of California, Davis, 3301 C St. Suite 1400, Sacramento, CA, 95816, USA., Fax: +1 (916) 843-9444, emaverakis@ucdavis.edu.

CONFLICT OF INTERESTS

The authors have declared no conflicting interests.

entity, different from other common arthritides like rheumatoid arthritis [1]. Also, they described five clinical patterns of PsA: oligoarticular asymmetrical, polyarticular rheumatoid arthritis-like, distal predominant, spondylitis and arthritis mutilans. Similar to PsA, cutaneous psoriasis has a variable presentation with different subtypes including guttate, inverse, palmoplantar, pustular, erythrodermic and the most common, plaque psoriasis. Plaque psoriasis is known as psoriasis vulgaris (PsV), and for the most part PsV predates the onset of arthritis, although this pattern deviates in a small percent of cases [2]. Many aspects of psoriasis pathophysiology remain a mystery despite our new insight into effector cytokines, chemokines and cell mediators, and the recent advances in psoriasis genetics. This review will discuss the psoriasis genetic susceptibility loci including HLA associations, cell mediators common to both PsV and PsA, and geoepidemiology of psoriasis.

SKIN PHYSIOLOGY and PATHOLOGY

In broad terms, skin is composed of two layers, the dermis and epidermis, which are separated by a basement membrane. Basal keratinocytes reside on the basement membrane, generating prodigy that undergo distinct stages of differentiation to ultimately become the stratum corneum, an enucleated, metabolically inactive layer. The layers of the epidermis include the stratum corneum (the outermost layer), stratum granulosum, stratum spinosum and stratum basale. Each of these layers become altered in the setting of PsV (Figure 1).

Although PsV is usually a clinical diagnosis, challenging presentations sometime require a biopsy. While no consensus guidelines exist for the histologic diagnosis of PsV, “characteristic” histologic features have been well described in the medical literature. The major features include thinned suprapapillary plates, with occasional formation of spongiform pustules of Kogoj; collections of neutrophils in the stratum corneum, termed Munro’s microabscesses; psoriasiform epithelial hyperplasia; elongation and edema of dermal papillae; continuous or alternating parakeratosis, retained nuclei in the stratum corneum; a diminished or absent granular layer; and dilated and tortuous capillaries [3,4]. Given the microscopic diversity of PsV, Trozak created a grading system where histologic features were assigned a number score based on features considered most characteristic of the disease [5]. Nearly pathognomonic histologic findings include Munro’s microabscesses and the spongiform pustules of Kojog; thus, these features were given the highest numerical value [6]. Club shaped rete ridges, suprapapillary plate thinning, total (as opposed to focal) parakeratosis and absence of a granular layer are considered characteristic of psoriasis, but were given a lesser score as these features can also be seen in other dermatologic conditions [5]. Complicating the histologic diagnosis of PsV further, is the finding that early and longstanding lesions can display different features [5].

GENETIC SUSCEPTIBILITY LOCI

Given the common underlying mechanisms of PsV and PsA, it is somewhat surprising that only 20–30% of patients with PsV develop joint disease [2,7]. Heterogeneity in disease presentation is partially reconciled by HLA types, which have been implicated to dictate phenotype, disease onset, and severity. Though the majority of patients ascribe to a typical timeline with arthritis following cutaneous onset, deviations from this stereotype can be

explained through HLA genotypes. The major polarizing HLA types, HLA-Cw*0602 and HLA-B*27, are paradigms for primarily cutaneous and joint disease, respectively. These and other genetic susceptibility loci are discussed below, and additional loci are listed in Table 1.

HLA Associations

HLA-Cw*0602—PsV is strongly associated with the human leukocyte-associated antigen (HLA), Cw6. HLA-C, a type of MHC class I molecule, is expressed on all human nucleated cells. Like other class I molecules, it functions to present endogenously processed antigens to the immune system [8,9]. Patients with the HLA-Cw*0602 allele have a 10–20 fold increased risk of developing PsV [10]. Gudjonsson et al. demonstrated that heterozygotes have a relative risk of developing psoriasis of 8.9, whereas homozygotes have a relative risk of 23.1, with earlier disease onset being more common in this group [11]. Cibulova et al. found HLA-Cw*0602 to be the most prominent HLA in Type I PsV, correlating well with an earlier disease onset and a family history of psoriasis [12]. This finding was echoed in siblings discordant for HLA-Cw*0602, where the positive HLA-Cw*0602 sibling had significantly early disease onset [13]. Interestingly, there is mixed data regarding the effect of HLA-Cw*0602 on disease severity and phenotype. Some have reported that HLA-Cw*0602 does not dictate severity or phenotype, while others have reported that HLA-Cw*0602 patients develop more extensive disease and guttate-like psoriatic lesions [11,14,13,15].

While the data regarding the association with PsV is solid, the relationship between HLA-Cw*0602 and PsA is not as strong. Several studies failed to show a statistically significant relationship between HLA-Cw*0602 and PsA [16,14]. In one said study, arthritis was more common in the HLA-Cw*0602 negative group, though this difference was not significant [17]. Interestingly, when patients were stratified by onset of skin and joint disease, HLA-Cw*0602 patients had more time dependent development of musculoskeletal disease [18]. Also, this cohort of patients had a lower percentage of HLA-Cw*0602, thought to be due to more stringent criteria, excluding patients with non-psoriatic musculoskeletal syndromes [18]. Indeed, the complex, heterogeneous presentation of PsA makes gene studies challenging [16].

HLA-B*27—While HLA-B27 is widely associated with seronegative spondarthritides such as ankylosing spondylitis, it has also been found to play an important role in PsA. As stated by Winchester et al., the HLA-B*27 allele encodes for a MHC class I molecule with electronegative “B pockets”, which bind endogenously processed peptides with positively charged arginine anchor motifs at position P2 [18]. This is a proposed mechanism in ankylosing spondylitis, which might also be related to HLA-B*27’s ability to cause PsA [19–22]. HLA-B*27 has been suggested as the strongest risk allele for PsA. In cases of HLA-B*27 positivity, patients had nearly contemporaneous onset of cutaneous and musculoskeletal disease, with less extensive skin disease [18]. This phenomenon was found in other studies showing decreased time between skin and joint disease in patients with HLA-B*27, as well as earlier disease onset of both PsV and PsA [16]. Winchester postulated that self peptides presented by HLA-B*27 give rise to autoreactive T cells, specific to skin

and joints, whereas HLA-Cw*0602-presented autoantigens might primarily be of cutaneous origin [18].

With regards to arthritis, HLA-B*27 is strongly associated with axial disease [23–25]. McHugh et al. found that the association with HLA-B*27 and spondylitis became weaker as more peripheral joints were involved [26]. Others have found an increased risk of HLA-B*27 positive individuals developing enthesitis, dactylitis and uveitis [27]. Given the presence of similar extra-articular features (mucous membrane lesions, iritis, urethritis, diarrhea and aortic root dilatation), rheumatoid factor seronegativity, and spondylarthritis, PsA makes for a natural member of HLA-B*27-associated spondyloarthritides [2]. For other HLA associations, and skin and joint affiliations, see Table 1.

Genes of Skin Barrier Function

LCE3—In addition to HLA alleles, genes involved in skin barrier function, the innate system, and the adaptive immune system have known ties to PsV and PsA pathophysiology. Of the genes involved in skin barrier function, only *LCE3* has been associated with both PsV and PsA [28]. The late cornified envelop gene cluster 3 (*LCE3*) is part of the *epidermal differentiation complex (EDC)* that encodes stratum corneum proteins in the cornified envelope that have potential functions in epidermal terminal differentiation [29]. *LCE3* proteins encompass five genes (*LCE3A*, *LCE3B*, *LCE3C*, *LCE3D*, *LCE3E*), each with a unique structure and function [30]. Of these genes, deletions of *LCE3B* and *LCE3C* (*LCE3C_LCE3B-del*) are significantly associated with the risk of PsV and PsA [30]. One possibility is that a breach of the skin barrier function allows for a cross-reactive skin/joint immune response to develop. An alternative hypothesis is that *LCE3* deletions affect tissues other than skin, promoting autoimmunity at multiple sites.

With regard to skin barrier function, *LCE3C* promotes hyperproliferation and keratinocyte differentiation in normal individuals following tape stripping [31]. This response was not seen in patients homozygous for *LCE3C_LCE3B-del*. De Cid et al. suggested that this deletion could result in impaired epidermal repair after barrier disruption, causing increased susceptibility to exogenous antigens, resulting in inflammation. The latter mechanism supports the Koebner phenomenon, whereby non-lesional skin develops inflammatory lesions in response to traumatic exfoliation [31].

Genes of the Innate Immune Response

CARD14—Whereas *LCE3* encodes skin barrier function, caspase recruitment domain family member 14 (*CARD14*) is closely tied to the innate (and adaptive) immune system via NF- κ B. The psoriasis susceptibility locus 2 (PSORS2) is due to a gain of function mutation in *CARD14* that affect epithelial and stromal cells [32,33]. In addition, localization of *CARD14* is different in psoriatic plaques compared to normal skin. Jordan et al. found psoriatic plaques had reduced expression of *CARD14* in basal layers and mild upregulation in suprabasal layers [32]. In the skin, *CARD14* induces activation of NF- κ B that in turn upregulates a variety of factors including keratinocyte IL-8, which is a strong neutrophilic chemotactic factor, and CCL20 [34,35]. In the joint, *CARD14* induces inflammation through NF- κ B-mediated processes, triggering early osteoclast differentiation via RANKL and TNF

[36]. The requirement of NF- κ B activation in bone resorption has previously been demonstrated in NF- κ B deficient mice that develop osteopetrosis due to an absence of bone resorbing osteoclasts [37].

NOS2—Like *CARD14*, *NOS2* encodes a protein involved in the innate immune system. SNP rs4795067 maps to the intron of the *NOS2* gene, which encodes inducible nitric oxide synthase (iNOS), an enzyme responsible for producing the proinflammatory signaling molecule, nitric oxide. While this SNP was significant only in subphenotype analysis for PsV, it was strongly associated with PsA [38]. Melchiorri et al. demonstrated that iNOS is markedly overexpressed in the synovium, either by synovial fibroblasts or infiltrating dendritic cells in the setting of PsA [39]. Increased iNOS leads to activation of metalloproteinases and inhibits the production of the matrix elements [39,40]. The importance of iNOS in the pathophysiology of PsV has also been well highlighted in the literature. Within psoriatic skin, Zaba et al. described a 30-fold increase of TNF-producing CD11c-positive (CD11c⁺), CD11c-negative dendritic cells expressing iNOS [41,42]. Through anti-CD11c⁺ therapy, Lowes et al. demonstrated that PsV disease activity correlates less to T cell infiltrates, and more to dendritic cell infiltration and iNOS expression [42]. This study suggests that dendritic cells accumulate in psoriatic lesions and perpetuate inflammation through production of iNOS and TNF.

Genes of the Adaptive Immune System

NFKBIA, PSMA6 and ERAP1—*NFKBIA*, *PSMA6* and *ERAP1* are genes involved in the adaptive immune system thought to be important in PsA and PsV pathophysiology. A SNP (rs12586317) in the region of the genes *KIAA0391*, *PSMA6* and *NFKBIA* was found to be significantly associated with PsV and PsA [38]. Of the three genes, *NFKBIA* and *PSMA6* are considered most significant in PsV susceptibility. I κ B-a, which is an inhibitor of NF- κ B signaling, is encoded by *NFKBIA* [38]. I κ B-a retains NF- κ B in the cytoplasm by sterically blocking the NF- κ B nuclear localizing sequence [43]. Many activating agents of NF- κ B, like TNF and IL-1, disrupt the I κ B-a/NF- κ B interaction by phosphorylation-induced degradation of I κ B-a, allowing NF- κ B to translocate to the nucleus [43]. Transcriptional products of NF- κ B include chemokines (CXCL1, CXCL2, CXCL10), cytokines (TNF, IL-6, IL1 β), negative cell regulators (A20, NFKBIA), and the cell survival factors (BCL2L1, and PAI2). Additional genetic susceptibility loci involving the NF- κ B pathway include TNF alpha-induced protein 3 (*TNFAIP3*) and TNKAIP3 interacting protein 1 (*TNIP1*) that activate NF- κ B through ubiquitination and degradation of I κ B-a [44,45].

In contrast, *ERAP1* and *PSMA6* encode protein involved in MHC class I antigen processing [38]. Endoplasmic reticulum aminopeptidase 1 (ERAP1) processes peptides within the endoplasmic reticulum that are presented by HLA molecules on antigen presenting cells [46]. Molecular models of an *ERAP1* gene variant showed decreased aminopeptidase activity in the enzyme pocket [47]. Given its role of antigen processing, it is thought that ERAP1 could process autoantigens, which are then presented by HLA-Cw6 [48]. This theory is strengthened by the finding that PsV susceptibility was only influenced in patients carrying the *ERAP1* gene variant in the presence of HLA-Cw*0602 [49]. *ERAP1* has been associated with the PsA subtype resembling ankylosing spondylitis, which is not surprising

considering *ERAPI* has been shown to affect HLA-B27 expression [50]. Chen et al. demonstrated that an *ERAPI* variant increased HLA-B27 free heavy chain expression in HeLa.B27 and ERAAP $-/-$ cells compared to protective *ERAPI* variants [50]. HLA-B27 free heavy chains are cell membrane bound remnants of the HLA-B27 molecule after dissociation of the β 2-microglobulin and peptide. Traditionally heavy chains are thought to translocate to the cell surface as part of a fully functional HLA molecule, though free heavy chains have been shown to reach the cell surface independently of β 2-microglobulin and peptide [51,52]. HLA-B27 free heavy chains have been shown to bind immunoregulatory receptors killer cell immunoglobulin-like receptor 3DL2 (KIR3DL2) with greater affinity, ultimately causing proliferation and survival of IL-17 producing T cells [50,53,54].

Similar to *ERAPI*, *PSMA6* is involved in encoding protein involved in MHC class I antigen processing, and it is likely that the disruption of *PSMA6*'s normal function generates autoantigens or other proinflammatory antigens for presentation to pathogenic CD8⁺ T cells. *PSMA6* is known to be overexpressed in psoriatic lesions [38]. Though the mechanism of *PSMA6* in PsA is not fully understood, *PSMA6* has been significantly associated with ankylosing spondylitis, which suggests a similar etiology for both arthritides [55]. Moreover, polymorphisms of this SNP are associated with other autoimmune diseases such as Graves disease and inflammatory bowel disease [38].

CYTOKINES, CHEMOKINES and EFFECTOR CELLS

Many of the other genes identified in GWAS encode proteins that overlap with the soluble mediators identified in animal, immunologic and molecular models of psoriasis. The concept of an altered cytokine network being central to the pathophysiology of PsV and PsA was popularized by the Th1/Th2 hypothesis, with psoriasis being originally labeled as a prototypic Th1 disease [56]. Now the IL-23/Th17 axis is more at the forefront of current theories, though many cytokines are likely involved in psoriasis pathophysiology. Some of the mechanisms for the major cytokines linked to PSV and PsA are explained below.

IL-23/ Th17 axis

The IL-23/Th17 axis is a major pathway in the pathogenesis of multiple autoimmune diseases, including PsV and PsA. Virtually all elements of the IL-23/Th17 axis (Th17 cells, IL-17, IL-17R, IL-22 and IL-23p19, IL-23R) have been shown to be elevated in psoriatic plaques and synovial fluid of PsA patients [57–62]. Differentiation of Th17 cells occurs after exposure to IL-1 β , IL-6 and TGF- β [63–65]. Of these, TGF- β increases responsiveness to IL-23, which is necessary for stabilization, survival and proliferation of Th17 cells [66,67]. This may be an oversimplification of the Th17 pathway given the discovery of unique subtypes of Th17 cells, which are described in detail elsewhere [68].

The IL-23/Th17 axis has been shown to evoke the various features of psoriatic plaques. We have found that systemic expression of IL-17A in murine models resulted in neutrophilia and histologic features consistent with plaque psoriasis including epidermal hyperplasia, parakeratosis, and hypertrophy of the spinous layer [69]. Others have shown that IL-17 stimulated keratinocytes to release chemotactic factors IL-8/CXCL8, CXCL3, CXCL5, and CXCL8, causing neutrophil migration, resulting in the formation of Munro's microabscesses

[61]. While IL-17 is largely considered the primary proinflammatory cytokine that induces cell trafficking of neutrophils (also dendritic cells and T cells), another Th17 related cytokine, IL-22, is responsible for epidermal hyperplasia by down regulating keratinocyte differentiation genes suggesting that IL-17 and IL-22 mediate distinct pathways that contribute to psoriasis [61]. In addition IL-23, which partly regulates the Th17 cell population, also seems to stimulate epidermal hyperplasia via other mechanisms involving TNF and IL-20R2 [70]. It is noteworthy that in an animal model of IL-23 overexpression where multiple pathways are activated mixed features of psoriasis and arthritis occur such as enthesitis, pannus formation and bone erosion has been observed [71,72] and unpublished data. The mechanism by which the IL-23/Th17 axis induces joint disease is a field of active investigation. Although IL-23 promotes erosive bone disease by stimulating Th17 cells to produce RANKL and IL-17, IL-23 and IL-17 independently induce myeloid cells to undergo osteoclast formation [74,75,73].

Medications targeting elements of the IL-23/Th17 axis have proven effective in the treatment of both PsA and PsV, further substantiating this axis in psoriasis pathophysiology. Ustekinumab is a cytokine-neutralizing human monoclonal antibody directed against the common p40 subunit shared between IL-12 and IL-23 [76]. By blocking IL-23, ustekinumab inhibits Th17 differentiation and survival thereby decreasing levels of IL-17 [76]. Phase III, randomized, double blind, placebo-controlled trials of ustekinumab proved successful in treatment of PsV [77,78]. Similarly, ustekinumab was effective in treatment of PsA with symptomatic and radiographic improvement in dactylitis and enthesitis [79]. IL-17A inhibitors, like secukinumab and ixekizumab, have also proven effective in the treatment of PsV and PsA.

The CLEAR trial demonstrated that secukinumab was superior to ustekinumab in inducing PASI 100 (44.3% of patients receiving secukinumab versus 28.4% of patients receiving ustekinumab) [80]. However in this trial, the dose of secukinumab was markedly higher compared to ustekinumab (300 mg weekly for the first 4 weeks, then every 4 weeks thereafter versus 90 mg on weeks 1 and 4, then every 12 weeks thereafter). Similar to the efficacy in treating PsV, IL-17A inhibitors showed improvement in patients with PsA, demonstrated in the FUTURE 2, FIXTURE and ERASURE trials [81,82]. Brodalumab, a monoclonal antibody specific to the IL-17 receptor, has been shown to be effective in treating PsV, however due to concern for increased suicide risk, it is unclear if it will make it to market [83]. These trials underscore the shared pathophysiology of the IL-23/Th17 axis in PsA and PsV.

CCL20 and CCR6

Though Th17 cells express a variety of receptors (CCR2, CCR4, CCR5, CXCR3), their hallmark receptor CCR6 distinguishes them from Th1 and Th2 cells [84]. CCR6 is a CC chemokine G protein-coupled receptor. Th17 cells also produce the ligand for CCR6, chemokine (C-C motif) ligand 20 (CCL20), which is a cytokine of the CC chemokine family [84]. While keratinocytes produce low levels of CCL20 at baseline, proinflammatory cytokines, namely IL-17, TNF, IL-1, IFN γ , enhance CCL20 expression [85]. Also, Harper et

al. demonstrated that human keratinocytes upregulate CCL20 expression in a dose-dependent manner when exposed to IL-17A, IL-22 and TNF [86].

CCL20 is a chemotactic factor for CCR6⁺ T cells, immature dendritic cells, and resident epidermal dendritic cells, also known as Langerhan cells [84,41]. CCR6⁺ T cells include memory T cells and Th17 effector cells, which infiltrate psoriatic lesions in response to CCL20 [61]. Hendrick et al. showed that CCR6 is essential to the psoriasiform phenotype in an animal psoriasis model. Specifically following IL-23 injection, mice that did not express CCR6 failed to develop the IL-23-inducible psoriatic features seen in control animals [87,88]. Though literature on CCL20 in PsA is not as extensive, CCL20 also strongly correlates with PsA disease activity [89]. Celis et al. have shown that CCL20 in PsA synovial fluid correlates with known markers of inflammation. In addition, CCL20 serum levels strongly correlate with CCL20 synovial fluid levels [90,89]. Thus, CCL20 fits well into the IL-23/Th17 paradigm, as it acts as a major Th17-attracting chemokine and is elevated in both the blood and synovial fluid of PsA patients.

IL-22

IL-22 is an alpha-helical cytokine belonging to the IL-10 superfamily. It is believed to be involved in psoriasis pathophysiology, and is produced by Th17 cells, Th1 cells and natural killer cells [91]. In the skin, IL-22 modulates keratinocyte mobility, induces acute phase reactants and promotes anti-microbial defense [91]. Levels of IL-22 are massively overexpressed in psoriatic lesions and increased in serum of PsV patients, the later strongly correlating with disease severity [92,93]. IL-22 contributes to the PsV phenotype by promoting keratinocyte hyperproliferation and preventing their terminal differentiation [94]. IL-20 and STAT3 amplify the actions of IL-22 by creating a positive feedback loop [95–97]. Similar to the induced hyperproliferation of keratinocytes, IL-22 promotes hyperproliferation leading to enthesal and periosteal bone formation in PsA. Specifically Mitra et al. found elevated levels of IL-22 in synovial fluid of PsA patients and demonstrated the ability of IL-22 to induce proliferation of fibroblast like synoviocytes [62]. This effect was magnified in the presence of TNF [62]. Likewise in a PsA animal model, IL-22^{-/-} mice had reduced arthritis and pannus formation compared to control animals [98].

TNF

As a prototypic Th1 cytokine and one of the products induced by IL-17 stimulation, it is not surprising that TNF plays a central role in psoriasis pathophysiology [70,99]. TNF blockade was initially being developed as therapy for sepsis, but its coincidental success in treating PsV revolutionized psoriasis therapy [100]. TNF expression is upregulated in psoriatic skin and is essential to the development of the psoriatic plaque [70]. Boyman et al. demonstrated that mice failed to develop psoriatic plaques when exposed to TNF-neutralizing monoclonal antibodies or receptor fusion proteins [101]. Today the most commonly prescribed biologics for psoriasis are the TNF inhibitors including etanercept, infliximab and adalimumab [76]. Although all of these medication neutralize soluble TNF, each have unique properties that tie into their mechanism of action [76]. For a comprehensive review of their differences, see Sivamani et al. (2013). TNF is also implicated in PsA pathophysiology by inducing osteoclastogenesis and anti-TNF therapy is widely used in PsA with clinical improvement in

approximately 70% of patients [102–104]. TNF is responsible for a stimulating inflammation through a variety of processes, some of which include the production of IL-1, prostaglandin E2 and acute phase reactants, as well as promoting the expression of adhesion molecules in endothelial cells.

IL-12

IL-12 is a heterodimeric inflammatory cytokine made of four alpha helices encoded by *IL-12A* and *IL-12B*. It shares a common subunit (p40) and receptor (IL12RB1) with IL-23. In PsV pathophysiology, IL-12 promotes the differentiation of naïve CD4⁺ T cells into mature IFN γ -producing T-helper type 1 (Th1) effector cells. In addition, it is a potent stimulus of natural killer cells and induces CD8⁺ T cells to produce IFN γ [105]. High levels of IFN γ transcripts originating from IFN γ ⁺-secreting T cells are enriched in psoriatic plaques, and multiple studies have shown synergy between Th1 and Th17 pathways in PsV pathophysiology [106–108,57]. Kryczek et al. demonstrated that IFN γ -stimulated myeloid antigen presenting cells induce differentiation of IL-17-secreting T cells through a mechanism involving IL-1 β and IL-23 [57]. In addition, IFN γ induces CCL20 expression, which promotes homing of Th17 cells to lesional skin [57]. Therefore, both Th1 and Th17 cells play important roles in PsV pathophysiology.

While elements of the IL-12 pathway including *IL12B* and *IL12RB2* are significant to PsV and PsA in GWAS, IL-12 has been shown to play a protective role against the development of PsA [28,49]. IL-12 has an anti-inflammatory effect on joints, with IL-12 deficient mice experiencing more joint inflammation than control mice [109]. In addition, animal models have shown the absence of IL-12 results in the elevation of IL-1 β , IL-6 IL-17 and TNF expression, thus favoring an inflammatory environment [109]. Experimental autoimmune encephalitis (EAE) serves as a model of multiple sclerosis, and has supported the anti-inflammatory effects of IL-12. Animals lacking IL-12 were highly susceptible to EAE compared to controls, and cited IL-23 as the critical end stage effector cytokine [110,111]. In fact, the p40 heterodimer shared by IL-12 and IL-23 played a central role in EAE pathogenesis, whereas the p35 subunit (unique to IL-12) conferred a protective effect against EAE [111]. This is in agreement with GWAS where *IL12B*, the gene encoding p40, is significant to PsA [28]. *IL12RB2* codes for the subunit unique to IL-12 and lies adjacent to IL23R on chromosome 1, whereby inactivation of this gene could result in autoimmunity [112]. Therefore, IL-12 is significant to PsA development through its own inactivation, or its association with the p40 subunit.

RANK/RANKL

Receptor activator of nuclear factor κ B (RANK) is widely associated with bone metabolism and plays a pathogenic role in PsV as well. RANK (the receptor for RANKL) is found on epidermal dendritic cells [113]. Keratinocytes residing in all epidermal layers within lesional psoriatic skin strongly express RANKL. Interestingly, Loser et al. demonstrated that RANK expression does not change epidermal dendritic cell behavior or number, but when stimulated by RANKL, causes increased proliferation of CD4⁺CD25⁺ T cells [113]. This compliments the finding whereby psoriatic plaques have a proliferation of regulatory T cells [114]. In addition, Sugiyama et al. found that dermal CD4⁺CD25⁺ T cells demonstrated

decreased suppression of effector T cells, though this finding was not replicated by Loser et al. [114,115]. Perhaps increased RANKL expression in psoriatic plaques leads to the expansion of non-functional regulatory T cells, resulting in the increased activity of effector T cells. Though much still needs to be explored in the RANK/RANKL pathway in PsV, the pathophysiology of RANKL in arthritis has been well described. RANKL is critical to osteoclastogenesis whereby RANKL-RANK binding results in recruitment of adaptor molecules to induce NF- κ B and mitogen-activated kinases [36]. RANKL-induced transcription factors ultimately lead to the differentiation of functional osteoclasts which through secretion of bone matrix degradation enzymes, including tartrate resistant acid phosphatase (TRAP), matrix metalloproteinase 9 (MMP9) and cathepsin K (CatK) resorb mineralized bone[116].

GEOEPIDEMIOLOGY

Psoriatic disease, while common worldwide, demonstrates patterns of skin and joint involvement with similar ethnic and geographic variation. Though challenging to precisely measure, the presence of PsA has been shown to mirror PsV in distinct ethnic groups. For example, Norway has the highest prevalence of PsV and arthritis in PsV patients compared to other Nordic regions (Denmark, Finland, Iceland and Faroe Islands) [117,118]. Similarly, Europe and the United States have a similar prevalence of PsV, and incidence of PsA [118–121]. The annual incidence of PsA is 6.59 per 100,00 in the United States, and 6 per 100,000 in Europe [122,123]. This pattern is upheld in countries with warmer climates. Japan has one of the lowest prevalences of PsV, estimated to be 0.34% [124]. Similarly, the incidence of PsA among Japanese PsV patients is extremely low at 0.1 per 100,000 [125]. American Samoa and natives in the Andes of South America were reported to have no cases of PsV or PsA [126,127]. Thus, not only does PsV and PsA show similar ethnic patterns, also exhibit geographic variation, increasing in prevalence from tropical environments to colder, northern regions [128].

Genetic susceptibility loci demonstrate interesting trends, as well. HLA-Cw*0602 is a high-risk PsV allele, though its frequency does not necessarily correlate to skin disease. Psoriasis is less common in Africans, with a prevalence as low as 0.3% in West Africa [118]. However, Africans (all black populations tested by Gudjonsson et al.) are known to have the highest prevalence of the HLA-Cw*0602 allele, at 15.09% [20,118]. Similarly, the *LCE3C_LCE3B-del* has been associated with PsA in Italian and Spanish populations, but no similar association was shown in German and Tunisian populations [129–131]. Thus, genetic susceptibility loci must be considered alongside population-specific effects and environmental exposures, which can vary dramatically.

CONCLUSION

Although the pathophysiology of psoriasis is broad, we have attempted to highlight the important factors shared by PsV and PsA. GWAS, animal models, and a variety of immunology and molecular biology approaches have given us critical insight into the pathophysiology of psoriasis. Despite our knowledge of these mechanisms, there is great variability in the clinical presentation of PsA and PsV. In addition, there is regional and

ethnic diversity, which suggests mediating factors that have yet to be thoroughly described. Hopefully, future research endeavors will elucidate the mechanisms of these underlying factors, allowing for the development of more effective, targeted therapies for these debilitating diseases.

Acknowledgments

FUNDING SOURCES

This work was supported by the Burroughs Wellcome Fund and NIH 1 DP2 OD008752 and NIH AR062173 and SHC 85700 to I.E.A).

REFERENCES:

1. Moll JMH , Wright V (1973) Psoriatic arthritis. *Seminars in Arthritis and Rheumatism* 3 (1):55–78. doi:10.1016/0049-0172(73)90035-84581554
2. Gladman DD , Antoni C , Mease P , Clegg DO , Nash P (2005) Psoriatic arthritis: epidemiology, clinical features, course, and outcome. *Annals of the Rheumatic Diseases* 64 (suppl 2):ii14–ii17. doi:10.1136/ard.2004.03248215708927
3. Camisa C (2008) 3 Histopathology of psoriasis. *Handbook of Psoriasis*:36
4. Elder DE (2014) *Lever's histopathology of the skin*. Lippincott Williams & Wilkins,
5. Trozak DJ (1994) HISTOLOGIC GRADING SYSTEM FOR PSORIASIS VULGARIS. *International Journal of Dermatology* 33 (5):380–381. doi:10.1111/j.1365-4362.1994.tb01073.x8039978
6. Johnson MA , Armstrong A (2013) Clinical and Histologic Diagnostic Guidelines for Psoriasis: A Critical Review. *Clinic Rev Allerg Immunol* 44 (2):166–172. doi:10.1007/s12016-012-8305-3
7. Zachariae H (2003) Prevalence of Joint Disease in Patients with Psoriasis. *Am J Clin Dermatol* 4 (7):441–447. doi:10.2165/00128071-200304070-0000112814334
8. Gudjonsson JE , Johnston A , Sigmundsdottir H , Valdimarsson H (2004) Immunopathogenic mechanisms in psoriasis. *Clinical & Experimental Immunology* 135 (1):1–8. doi:10.1111/j.1365-2249.2004.02310.x14678257
9. Apps R , Qi Y , Carlson JM , Chen H , Gao X , Thomas R , Yuki Y , Del Prete GQ , Goulder P , Brumme ZL , Brumme CJ , John M , Mallal S , Nelson G , Bosch R , Heckerman D , Stein JL , Soderberg KA , Moody MA , Denny TN , Zeng X , Fang J , Moffett A , Lifson JD , Goedert JJ , Buchbinder S , Kirk GD , Fellay J , McLaren P , Deeks SG , Pereyra F , Walker B , Michael NL , Weintrob A , Wolinsky S , Liao W , Carrington M (2013) Influence of HLA-C Expression Level on HIV Control. *Science (New York, NY)* 340 (6128):87–91. doi:10.1126/science.1232685
10. Mallon E , Newson R , Bunker CB (1999) HLA-Cw6 and the Genetic Predisposition to Psoriasis: a Meta-Analysis of Published Serologic Studies. *J Investig Dermatol* 113 (4):693–695. doi:10.1046/j.1523-1747.1999.00724.x10504461
11. Gudjonsson JE , Karason A , Antonsdottir A , Runarsdottir EH , Hauksson VB , Upmanyu R , Gulcher J , Stefansson K , Valdimarsson H (2003) Psoriasis patients who are homozygous for the HLA-Cw*0602 allele have a 2-5-fold increased risk of developing psoriasis compared with Cw6 heterozygotes. *British Journal of Dermatology* 148 (2):233–235. doi:10.1046/j.1365-2133.2003.05115.x12588373
12. Cibulova A , Zajacova M , Fojtikova M , Stofa J , Sedova L , Cejkova P , Lippert J , Arenberger P , Cerna M (2013) The HLA-Cw*06 allele and –1149 G/T polymorphism of extrapituitary promoter of PRL gene as a possible common genetic predisposing factors to psoriasis vulgaris and psoriatic arthritis in Czech population. *Rheumatol Int* 33 (4):913–919. doi:10.1007/s00296-012-2472-722821332
13. Enerbäck C , Nilsson S , Enlund F , Inerot A , Samuelsson L , Wahlström J , Swanbeck G , Martinsson T (2000) Stronger association with HLA-Cw6 than with corneodesmosin (S-gene) polymorphisms in Swedish psoriasis patients. *Arch Dermatol Res* 292 (11):525–530. doi:10.1007/s00403000017511194889

14. Ikäheimo I, Tiilikainen A, Karvonen J, Silvennoinen-Kassinen S (1996) HLA risk haplotype Cw6,DR7, DQA1*0201 and HLA-Cw6 with reference to the clinical picture of psoriasis vulgaris. *Arch Dermatol Res* 288 (7):363–365. doi:10.1007/BF025071048818183
15. Gudjonsson JE, Karason A, Runarsdottir EH, Antonsdottir AA, Hauksson VB, Jonsson HH, Gulcher J, Stefansson K, Valdimarsson H (2006) Distinct Clinical Differences Between HLA-Cw[ast]0602 Positive and Negative Psoriasis Patients - An Analysis of 1019 HLA-C- and HLA-B-Typed Patients. *J Invest Dermatol* 126 (4):740–74516439971
16. Queiro R, Torre JC, González S, López-Larrea C, Tinturé T, López-Lagunas I (2003) HLA antigens may influence the age of onset of psoriasis and psoriatic arthritis. *The Journal of Rheumatology* 30 (3):505–50712610809
17. Gudjonsson JE, Karason A, Antonsdottir AA, Runarsdottir EH, Gulcher JR, Stefansson K, Valdimarsson H (2002) HLA-Cw6-Positive and HLA-Cw6-Negative Patients with Psoriasis Vulgaris have Distinct Clinical Features. 118 (2):362–365
18. Winchester R, Minevich G, Steshenko V, Kirby B, Kane D, Greenberg DA, FitzGerald O (2012) HLA associations reveal genetic heterogeneity in psoriatic arthritis and in the psoriasis phenotype. *Arthritis & Rheumatism* 64 (4):1134–114422006066
19. Rammensee HG, Bachmann J, Emmerich NPN, Bachor OA, Stevanovi S (1999) SYFPEITHI: database for MHC ligands and peptide motifs. *Immunogenetics* 50 (3–4):213–219. doi:10.1007/s00251005059510602881
20. Marsh SGE, Parham P, Barber LD (1999) *The HLA factsbook*. Academic Press,
21. Benjamin R, Parham P (1990) Guilt by association: HLA-B27 and ankylosing spondylitis. *Immunology today* 11:137–1422187471
22. Sobao Y, Tsuchiya N, Takiguchi M, Tokunaga K (1999) Overlapping peptide-binding specificities of HLA-B27 and B39. *Arthritis Rheum* 42:175–1819920028
23. López-Larrea C, Torre Alonso JC, Rodriguez Perez A, Coto E (1990) HLA antigens in psoriatic arthritis subtypes of a Spanish population. *Annals of the Rheumatic Diseases* 49 (5):318–3192344212
24. Gladman DD, Anhorn KA, Schachter RK, Mervart H (1986) HLA antigens in psoriatic arthritis. *The Journal of rheumatology* 13 (3):586–5923735281
25. Salvarani C, Macchioni PL, Zizzi F, Mantovani W, Rossi F, Baricchi R, Ghirelli L, Frizziero L, Portioli I (1988) Clinical subgroups and HLA antigens in Italian patients with psoriatic arthritis. *Clinical and experimental rheumatology* 7 (4):391–396
26. McHugh NJ, Laurent MR, Treadwell BL, Tweed JM, Dagger J (1987) Psoriatic arthritis: clinical subgroups and histocompatibility antigens. *Annals of the Rheumatic Diseases* 46 (3):184–1883579382
27. Queiro R, Morante I, Cabezas I, Acasuso B (2015) HLA-B27 and psoriatic disease: a modern view of an old relationship. *Rheumatology*. doi:10.1093/rheumatology/kev296
28. Liu Y, Helms C, Liao W, Zaba LC, Duan S, Gardner J, Wise C, Miner A, Malloy MJ, Pullinger CR, Kane JP, Saccone S, Worthington J, Bruce I, Kwok PY, Menter A, Krueger J, Barton A, Saccone NL, Bowcock AM (2008) A Genome-Wide Association Study of Psoriasis and Psoriatic Arthritis Identifies New Disease Loci. *PLoS Genetics* 4 (4):e1000041. doi:10.1371/journal.pgen.100004118369459
29. Mischke D, Korge BP, Marenholz I, Volz A, Ziegler A (1996) Genes encoding structural proteins of epidermal cornification and S100 calcium-binding proteins form a gene complex (“epidermal differentiation complex”) on human chromosome 1q21. *Journal of Investigative Dermatology* 106 (5):989–9928618063
30. Shen C, Gao J, Yin X, Sheng Y, Sun L, Cui Y, Zhang X (2015) Association of the Late Cornified Envelope-3 Genes with Psoriasis and Psoriatic Arthritis: A Systematic Review. *Journal of Genetics and Genomics* 42 (2):49–56. doi:10.1016/j.jgg.2015.01.00125697099
31. de Cid R, Riveira-Munoz E, Zeeuwen PLJM, Robarge J, Liao W, Dannhauser EN, Giardina E, Stuart PE, Nair R, Helms C, Escaramís G, Ballana E, Martín-Ezquerria G, den Heijer M, Kamsteeg M, Joosten I, Eichler EE, Lázaro C, Pujol RM, Armengol L, Abecasis G, Elder JT, Novelli G, Armour JAL, Kwok P, Bowcock A, Schalkwijk J, Estivill X (2009) Deletion of the

- late cornified envelope (LCE) 3B and 3C genes as a susceptibility factor for psoriasis. *Nature genetics* 41 (2):211–215. doi:10.1038/ng.31319169253
32. Jordan CT , Cao L , Roberson EDO , Pierson KC , Yang C-F , Joyce CE , Ryan C , Duan S , Helms CA , Liu Y (2012) PSORS2 is due to mutations in CARD14. *The American Journal of Human Genetics* 90 (5):784–79522521418
 33. Jacques P , McGonagle D (2014) The role of mechanical stress in the pathogenesis of spondyloarthritis and how to combat it. *Best Practice & Research Clinical Rheumatology* 28 (5): 703–710. doi:10.1016/j.berh.2014.10.00925488779
 34. Bertin J , Wang L , Guo Y , Jacobson MD , Poyet J-L , Srinivasula SM , Merriam S , DiStefano PS , Alnemri ES (2001) CARD11 and CARD14 Are Novel Caspase Recruitment Domain (CARD)/Membrane-associated Guanylate Kinase (MAGUK) Family Members that Interact with BCL10 and Activate NF- κ B. *Journal of Biological Chemistry* 276 (15):11877–11882. doi: 10.1074/jbc.M01051220011278692
 35. Hammond ME , Lapointe GR , Feucht PH , Hilt S , Gallegos CA , Gordon CA , Giedlin MA , Mullenbach G , Tekamp-Olson P (1995) IL-8 induces neutrophil chemotaxis predominantly via type I IL-8 receptors. *The Journal of Immunology* 155 (3):1428–14337636208
 36. Yamashita T , Yao Z , Li F , Zhang Q , Badell IR , Schwarz EM , Takeshita S , Wagner EF , Noda M , Matsuo K , Xing L , Boyce BF (2007) NF- κ B p50 and p52 Regulate Receptor Activator of NF- κ B Ligand (RANKL) and Tumor Necrosis Factor-induced Osteoclast Precursor Differentiation by Activating c-Fos and NFATc1. *Journal of Biological Chemistry* 282 (25):18245–18253. doi: 10.1074/jbc.M61070120017485464
 37. Iotsova V , Caamaño J , Loy J , Yang Y , Lewin A , Bravo R (1997) Osteopetrosis in mice lacking NF- κ B1 and NF- κ B2. *Nature medicine* 3 (11):1285–1289
 38. Stuart PE , Nair RP , Ellinghaus E , Ding J , Tejasvi T , Gudjonsson JE , Li Y , Weidinger S , Eberlein B , Gieger C , Wichmann HE , Kunz M , Ike R , Krueger GG , Bowcock AM , Mroweitz U , Lim HW , Voorhees JJ , Abecasis GR , Weichenthal M , Franke A , Rahman P , Gladman DD , Elder JT (2010) Genome-wide association analysis identifies three psoriasis susceptibility loci. *Nature genetics* 42 (11):1000–1004. doi:10.1038/ng.69320953189
 39. Melchiorri C , Meliconi R , Frizziero L , Silvestri T , Pulsatelli L , Mazzetti I , Borzi RM , Ugucioni M , Facchini A (1998) Enhanced and coordinated in vivo expression of inflammatory cytokines and nitric oxide synthase by chondrocytes from patients with osteoarthritis. *Arthritis & Rheumatism* 41 (12):2165–21749870873
 40. Stefanovic-Racic M , Stadler J , Evans CH (1993) Nitric oxide and arthritis. *Arthritis & Rheumatism* 36 (8):1036–1044. doi:10.1002/art.17803608038343180
 41. Zaba LC , Krueger JG , Lowes MA (2009) Resident and “inflammatory” dendritic cells in human skin. *The Journal of investigative dermatology* 129 (2):302–308. doi:10.1038/jid.2008.22518685620
 42. Lowes MA , Chamian F , Abello MV , Fuentes-Duculan J , Lin S-L , Nussbaum R , Novitskaya I , Carbonaro H , Cardinale I , Kikuchi T , Gilleaudeau P , Sullivan-Whalen M , Wittkowski KM , Papp K , Garovoy M , Dummer W , Steinman RM , Krueger JG (2005) Increase in TNF- α and inducible nitric oxide synthase-expressing dendritic cells in psoriasis and reduction with efalizumab (anti-CD11a). *Proceedings of the National Academy of Sciences of the United States of America* 102 (52):19057–19062. doi:10.1073/pnas.050973610216380428
 43. Michael K (1999) How NF- κ B is activated: The role of the I κ B kinase (IKK) complex. *Oncogene* 18:6867–687410602462
 44. Ramirez VP , Gurevich I , Aneskievich BJ (2012) Emerging roles for TNIP1 in regulating post-receptor signaling. *Cytokine & growth factor reviews* 23 (3):109–11822542476
 45. Mauro C , Pacifico F , Lavorgna A , Mellone S , Iannetti A , Acquaviva R , Formisano S , Vito P , Leonardi A (2006) ABIN-1 binds to NEMO/IKK γ and co-operates with A20 in inhibiting NF- κ B. *Journal of Biological Chemistry* 281 (27):18482–1848816684768
 46. Patel F , Marusina AI , Duong C , Adamopoulos IE , Maverakis E (2013) NKG2C, HLA-E and their association with psoriasis. *Experimental Dermatology* 22 (12):797–799. doi:10.1111/exd.1228024279916

47. Reveille JD , Sims A-M , Danoy P , Evans DM , Leo P , Pointon JJ , Jin R , Zhou X , Bradbury LA , Appleton LH , Davis JC , Diekman L , Doan T , Dowling A , Duan R , Duncan EL , Farrar C , Hadler J , Harvey D , Karaderi T , Mogg R , Pomeroy E , Pryce K , Taylor J , Savage L , Deloukas P , Kumanduri V , Peltonen L , Ring SM , Whittaker P , Glazov E , Thomas GP , Maksymowych WP , Inman RD , Ward MM , Stone MA , Weisman MH , Wordsworth BP , Brown MA (2010) Genome-wide association study of ankylosing spondylitis identifies non-MHC susceptibility loci. *Nature genetics* 42 (2):123–127. doi:10.1038/ng.51320062062
48. Harden JL , Krueger JG , Bowcock AM (2015) The immunogenetics of Psoriasis: A comprehensive review. *Journal of Autoimmunity* 64:66–73. doi:10.1016/j.jaut.2015.07.00826215033
49. Chandran V (2013) The genetics of psoriasis and psoriatic arthritis. *Clinic Rev Allerg Immunol* 44 (2):149–156
50. Chen L , Ridley A , Hammitzsch A , Al-Mossawi MH , Bunting H , Georgiadis D , Chan A , Kollnberger S , Bowness P (2015) Silencing or inhibition of endoplasmic reticulum aminopeptidase 1 (ERAP1) suppresses free heavy chain expression and Th17 responses in ankylosing spondylitis. *Annals of the Rheumatic Diseases*. doi:10.1136/annrheumdis-2014-206996
51. Khare SD , Hansen J , Luthra HS , David CS (1996) HLA-B27 heavy chains contribute to spontaneous inflammatory disease in B27/human beta2-microglobulin (beta2m) double transgenic mice with disrupted mouse beta2m. *Journal of Clinical Investigation* 98 (12):2746–27558981920
52. Martayan A , Fiscella M , Setini A , Ciccarelli G , Gambari R , Feriotto G , Beretta A , Siccardi AG , Appella E , Giacomini P (1997) Conformation and surface expression of free HLA-CW1 heavy chains in the absence of β 2-microglobulin. *Human Immunology* 53 (1):23–33. doi:10.1016/S0198-8859(96)00256-X9127144
53. Payeli SK , Kollnberger S , Marroquin Belaunzaran O , Thiel M , McHugh K , Giles J , Shaw J , Kleber S , Ridley A , Wong-Baeza I (2012) Inhibiting HLA–B27 homodimer–driven immune cell inflammation in spondylarthritis. *Arthritis & Rheumatism* 64 (10):3139–314922576154
54. Bowness P , Ridley A , Shaw J , Chan AT , Baeza IW , Fleming M , Cummings F , McMichael A , Kollnberger S (2011) Th17 cells expressing KIR3DL2+ and responsive to HLA-B27 homodimers are increased in Ankylosing Spondylitis. *Journal of immunology (Baltimore, Md : 1950)* 186 (4):2672–2680. doi:10.4049/jimmunol.1002653
55. Zhao H , Wang D , Fu D , Xue L (2015) Predicting the potential ankylosing spondylitis-related genes utilizing bioinformatics approaches. *Rheumatol Int* 35 (6):973–979. doi:10.1007/s00296-014-3178-925432079
56. Uyemura K , Yamamura M , Fivenson DF , Modlin RL , Nickoloff BJ (1993) The Cytokine Network in Lesional and Lesion-Free Psoriatic Skin Is Characterized by a T-Helper Type 1 Cell-Mediated Response. *J Investig Dermatol* 101 (5):701–7057693825
57. Kryczek I , Bruce AT , Gudjonsson JE , Johnston A , Aphale A , Vatan L , Szeliga W , Wang Y , Liu Y , Welling TH , Elder JT , Zou W (2008) Induction of IL-17+ T Cell Trafficking and Development by IFN- γ : Mechanism and Pathological Relevance in Psoriasis. *The Journal of Immunology* 181 (7):4733–4741. doi:10.4049/jimmunol.181.7.473318802076
58. Raychaudhuri S , Raychaudhuri S , Genovese M (2012) IL-17 receptor and its functional significance in psoriatic arthritis. *Mol Cell Biochem* 359 (1–2):419–429. doi:10.1007/s11010-011-1036-621894442
59. Tonel G , Conrad C , Laggner U , Di Meglio P , Grys K , McClanahan TK , Blumenschein WM , Qin J-Z , Xin H , Oldham E , Kastelein R , Nickoloff BJ , Nestle FO (2010) Cutting Edge: A Critical Functional Role for IL-23 in Psoriasis. *Journal of immunology (Baltimore, Md : 1950)* 185 (10):5688–5691. doi:10.4049/jimmunol.1001538
60. Wilson NJ , Boniface K , Chan JR , McKenzie BS , Blumenschein WM , Mattson JD , Basham B , Smith K , Chen T , Morel F , Lecron J-C , Kastelein RA , Cua DJ , McClanahan TK , Bowman EP , de Waal Malefyt R (2007) Development, cytokine profile and function of human interleukin 17-producing helper T cells. *Nat Immunol* 8 (9):950–957. doi:http://www.nature.com/ni/journal/v8/n9/supinfo/ni1497_S1.html17676044
61. Nograles KE , Zaba LC , Guttman E , Fuentes-Duculan J , Suarez-Farinas M , Cardinale I , Khatcherian A , Gonzalez J , Pierson KC , White TR , Pensabene C , Coats I , Novitskaya I , Lowes MA , Krueger JG (2008) Th17 cytokines interleukin (IL)-17 and IL-22 modulate distinct

- inflammatory and keratinocyte-response pathways. *The British journal of dermatology* 159 (5): 1092–1102. doi:10.1111/j.1365-2133.2008.08769.x18684158
62. Mitra A , Raychaudhuri SK , Raychaudhuri SP (2012) Functional role of IL-22 in psoriatic arthritis. *Arthritis Research & Therapy* 14 (2):R65–R65. doi:10.1186/ar3781
 63. Liang SC , Tan X-Y , Luxenberg DP , Karim R , Dunussi-Joannopoulos K , Collins M , Fouser LA (2006) Interleukin (IL)-22 and IL-17 are coexpressed by Th17 cells and cooperatively enhance expression of antimicrobial peptides. *The Journal of Experimental Medicine* 203 (10):2271–2279. doi:10.1084/jem.2006130816982811
 64. Bettelli E , Carrier Y , Gao W , Korn T , Strom TB , Oukka M , Weiner HL , Kuchroo VK (2006) Reciprocal developmental pathways for the generation of pathogenic effector TH17 and regulatory T cells. *Nature* 441 (7090):235–238. doi:http://www.nature.com/nature/journal/v441/n7090/suppinfo/nature04753_S1.html16648838
 65. Weaver CT , Harrington LE , Mangan PR , Gavrieli M , Murphy KM (2006) Th17: An Effector CD4 T Cell Lineage with Regulatory T Cell Ties. *Immunity* 24 (6):677–688. doi:10.1016/j.immuni.2006.06.00216782025
 66. Aggarwal S , Ghilardi N , Xie M-H , de Sauvage FJ , Gurney AL (2003) Interleukin-23 Promotes a Distinct CD4 T Cell Activation State Characterized by the Production of Interleukin-17. *Journal of Biological Chemistry* 278 (3):1910–1914. doi:10.1074/jbc.M20757720012417590
 67. Mangan PR , Harrington LE , O’Quinn DB , Helms WS , Bullard DC , Elson CO , Hatton RD , Wahl SM , Schoeb TR , Weaver CT (2006) Transforming growth factor- β induces development of the TH17 lineage. *Nature* 441 (7090):231–234. doi:http://www.nature.com/nature/journal/v441/n7090/suppinfo/nature04754_S1.html16648837
 68. Gagliani N , Vesely MCA , Iseppon A , Brockmann L , Xu H , Palm NW , de Zoete MR , Licona-Limón P , Paiva RS , Ching T , Weaver C , Zi X , Pan X , Fan R , Garmire LX , Cotton MJ , Drier Y , Bernstein B , Geginat J , Stockinger B , Esplugues E , Huber S , Flavell RA (2015) Th17 cells transdifferentiate into regulatory T cells during resolution of inflammation. *Nature* 523 (7559): 221–225. doi:10.1038/nature1445225924064
 69. Adamopoulos IE , Suzuki E , Chao C- C , Gorman DAN , Adda S , Maverakis E , Zarbalis K , Geissler R , Asio A , Blumenschein WM , McClanahan T , De Waal Malefyt R , Gershwin ME , Bowman EP (2015) IL-17A GENE TRANSFER INDUCES BONE LOSS AND EPIDERMAL HYPERPLASIA ASSOCIATED WITH PSORIATIC ARTHRITIS. *Annals of the rheumatic diseases* 74 (6):1284–1292. doi:10.1136/annrheumdis-2013-20478224567524
 70. Chan JR , Blumenschein W , Murphy E , Diveu C , Wiekowski M , Abbondanzo S , Lucian L , Geissler R , Brodie S , Kimball AB , Gorman DM , Smith K , de Waal Malefyt R , Kastelein RA , McClanahan TK , Bowman EP (2006) IL-23 stimulates epidermal hyperplasia via TNF and IL-20R2–dependent mechanisms with implications for psoriasis pathogenesis. *The Journal of Experimental Medicine* 203 (12):2577–2587. doi:10.1084/jem.2006024417074928
 71. Sherlock JP , Joyce-Shaikh B , Turner SP , Chao C-C , Sathe M , Grein J , Gorman DM , Bowman EP , McClanahan TK , Yearley JH , Eberl G , Buckley CD , Kastelein RA , Pierce RH , LaFace DM , Cua DJ (2012) IL-23 induces spondyloarthritis by acting on ROR- γ t+ CD3+CD4-CD8- enthesal resident T cells. *Nat Med* 18 (7):1069–1076. doi:<http://www.nature.com/nm/journal/v18/n7/abs/nm.2817.html-supplementary-information22772566>
 72. Adamopoulos IE , Tessmer M , Chao C-C , Adda S , Gorman D , Petro M , Chou C-C , Pierce RH , Yao W , Lane NE , Laface D , Bowman EP (2011) IL-23 Is Critical for Induction of Arthritis, Osteoclast Formation, and Maintenance of Bone Mass. *Journal of immunology (Baltimore, Md : 1950)* 187 (2):951–959. doi:10.4049/jimmunol.1003986
 73. Sato K , Suematsu A , Okamoto K , Yamaguchi A , Morishita Y , Kadono Y , Tanaka S , Kodama T , Akira S , Iwakura Y , Cua DJ , Takayanagi H (2006) Th17 functions as an osteoclastogenic helper T cell subset that links T cell activation and bone destruction. *The Journal of Experimental Medicine* 203 (12):2673–2682. doi:10.1084/jem.2006177517088434
 74. Wu DJ , Dixit N , Nguyen T , Suzuki E , Shin HS , Davis J , Maverakis E , Adamopoulos IE (2014) A Novel In Vivo Gene Transfer Technique and In Vitro Cell Based Assays for the Study of Bone Loss in Musculoskeletal Disorders. *Journal of visualized experiments : JoVE* (88):10.3791/51810. doi:10.3791/51810

75. Adamopoulos IE , Chao C-c , Geissler R , Laface D , Blumenschein W , Iwakura Y , McClanahan T , Bowman EP (2010) Interleukin-17A upregulates receptor activator of NF- κ B on osteoclast precursors. *Arthritis research & therapy* 12 (1):R2920167120
76. Sivamani R , Goodarzi H , Garcia M , Raychaudhuri S , Wehrli L , Ono Y , Maverakis E (2013) Biologic Therapies in the Treatment of Psoriasis: A Comprehensive Evidence-Based Basic Science and Clinical Review and a Practical Guide to Tuberculosis Monitoring. *Clinic Rev Allerg Immunol* 44 (2):121–140. doi:10.1007/s12016-012-8301-7
77. Leonardi CL , Kimball AB , Papp KA , Yeilding N , Guzzo C , Wang Y , Li S , Dooley LT , Gordon KB , Investigators PS (2008) Efficacy and safety of ustekinumab, a human interleukin-12/23 monoclonal antibody, in patients with psoriasis: 76-week results from a randomised, double-blind, placebo-controlled trial (PHOENIX 1). *The Lancet* 371 (9625):1665–1674
78. Papp KA , Langley RG , Lebwohl M , Krueger GG , Szapary P , Yeilding N , Guzzo C , Hsu M-C , Wang Y , Li S (2008) Efficacy and safety of ustekinumab, a human interleukin-12/23 monoclonal antibody, in patients with psoriasis: 52-week results from a randomised, double-blind, placebo-controlled trial (PHOENIX 2). *The Lancet* 371 (9625):1675–1684
79. Torres T , Faria R (2015) Ustekinumab: The “New Kid on the Block” in the Treatment of Psoriatic Arthritis. *Drug development research*
80. Taçi D , Blauvelt A , Reich K , Tsai T-F , Vanaclocha F , Kingo K , Ziv M , Pinter A , Hugot S , You R , Milutinovic M (2015) Secukinumab is superior to ustekinumab in clearing skin of subjects with moderate to severe plaque psoriasis: CLEAR, a randomized controlled trial. *Journal of the American Academy of Dermatology* 73 (3):400–409. doi:10.1016/j.jaad.2015.05.01326092291
81. Gottlieb AB , Langley RG , Philipp S , Sigurgeirsson B , Blauvelt A , Martin R , Papavassilis C , Mpfu S (2015) Secukinumab Improves Physical Function in Subjects With Plaque Psoriasis and Psoriatic Arthritis: Results from Two Randomized, Phase 3 Trials. *Journal of drugs in dermatology: JDD* 14 (8):821–83326267726
82. McInnes IB , Mease PJ , Kirkham B , Kavanaugh A , Ritchlin CT , Rahman P , van der Heijde D , Landewé R , Conaghan PG , Gottlieb AB , Richards H , Pricop L , Ligozio G , Patekar M , Mpfu S Secukinumab, a human anti-interleukin-17A monoclonal antibody, in patients with psoriatic arthritis (FUTURE 2): a randomised, double-blind, placebo-controlled, phase 3 trial. *The Lancet* 386 (9999):1137–1146. doi:10.1016/S0140-6736(15)61134-5
83. Schmidt C (2015) Suicidal thoughts end Amgen’s blockbuster aspirations for psoriasis drug. *Nature biotechnology* 33 (9):894–895
84. Harper EG , Guo C , Rizzo H , Lillis JV , Kurtz SE , Skorcheva I , Purdy D , Fitch E , Iordanov M , Blauvelt A (2009) Th17 Cytokines Stimulate CCL20 Expression in Keratinocytes In Vitro and In Vivo: Implications for Psoriasis Pathogenesis. *The Journal of investigative dermatology* 129 (9): 2175–2183. doi:10.1038/jid.2009.6519295614
85. Homey B , Dieu-Nosjean M-C , Wiesenborn A , Massacrier C , Pin J-J , Oldham E , Catron D , Buchanan ME , Müller A , deWaal Malefyt R , Deng G , Orozco R , Ruzicka T , Lehmann P , Lebecque S , Caux C , Zlotnik A (2000) Up-Regulation of Macrophage Inflammatory Protein-3 α /CCL20 and CC Chemokine Receptor 6 in Psoriasis. *The Journal of Immunology* 164 (12):6621–6632. doi:10.4049/jimmunol.164.12.662110843722
86. Harper EG , Guo C , Rizzo H , Lillis JV , Kurtz SE , Skorcheva I , Purdy D , Fitch E , Iordanov M , Blauvelt A (2009) Th17 cytokines stimulate CCL20 expression in keratinocytes in vitro and in vivo: implications for psoriasis pathogenesis. *Journal of Investigative Dermatology* 129 (9):2175–218319295614
87. Hedrick MN , Lonsdorf AS , Shirakawa A-K , Lee C-CR , Liao F , Singh SP , Zhang HH , Grinberg A , Love PE , Hwang ST (2009) CCR6 is required for IL-23–induced psoriasis-like inflammation in mice. *The Journal of clinical investigation* 119 (8):231719662682
88. Hedrick MN , Lonsdorf AS , Hwang ST , Farber JM (2010) CCR6 as a possible therapeutic target in psoriasis. *Expert opinion on therapeutic targets* 14 (9):911–92220629596
89. Celis R , Planell N , Fernández-Sueiro JL , Sanmartí R , Ramírez J , González-Álvaro I , Pablos JL , Cañete JD (2012) Synovial cytokine expression in psoriatic arthritis and associations with lymphoid neogenesis and clinical features. *Arthritis Research & Therapy* 14 (2):R93–R93. doi: 10.1186/ar381722541888

90. Mrabet D , Laadhar L , Sahli H , Zouari B , Haouet S , Makni S , Sellami S (2013) Synovial fluid and serum levels of IL-17, IL-23, and CCL-20 in rheumatoid arthritis and psoriatic arthritis: a Tunisian cross-sectional study. *Rheumatol Int* 33 (1):265–266. doi:10.1007/s00296-011-2231-122083617
91. Wolk K , Sabat R (2006) Interleukin-22: A novel T- and NK-cell derived cytokine that regulates the biology of tissue cells. *Cytokine & Growth Factor Reviews* 17 (5):367–380. doi:10.1016/j.cytogfr.2006.09.00117030002
92. Wolk K , Kunz S , Witte E , Friedrich M , Asadullah K , Sabat R (2004) IL-22 Increases the Innate Immunity of Tissues. *Immunity* 21 (2):241–254. doi:10.1016/j.immuni.2004.07.00715308104
93. Wolk K , Witte E , Reineke U , Witte K , Friedrich M , Sterry W , Asadullah K , Volk HD , Sabat R (2004) Is there an interaction between interleukin-10 and interleukin-22? *Genes Immun* 6 (1):8–18
94. Wolk K , Witte E , Wallace E , Döcke W-D , Kunz S , Asadullah K , Volk H-D , Sterry W , Sabat R (2006) IL-22 regulates the expression of genes responsible for antimicrobial defense, cellular differentiation, and mobility in keratinocytes: a potential role in psoriasis. *European Journal of Immunology* 36 (5):1309–1323. doi:10.1002/eji.20053550316619290
95. Wolk K , Haugen HS , Xu W , Witte E , Waggie K , Anderson M , Vom Baur E , Witte K , Warszawska K , Philipp S (2009) IL-22 and IL-20 are key mediators of the epidermal alterations in psoriasis while IL-17 and IFN- γ are not. *Journal of Molecular Medicine* 87 (5):523–53619330474
96. Rømer J , Hasselager E , Nørby PL , Steiniche T , Clausen JT , Kragballe K (2003) Epidermal overexpression of interleukin-19 and-20 mRNA in psoriatic skin disappears after short-term treatment with cyclosporine or calcipotriol. *Journal of Investigative Dermatology* 121 (6):1306–131114675174
97. Kunz S , Wolk K , Witte E , Witte K , Doecke WD , Volk HD , Sterry W , Asadullah K , Sabat R (2006) Interleukin (IL)-19, IL-20 and IL-24 are produced by and act on keratinocytes and are distinct from classical ILs. *Experimental dermatology* 15 (12):991–100417083366
98. Geboes L , Dumoutier L , Kelchtermans H , Schurgers E , Mitera T , Renauld J-C , Matthys P (2009) Proinflammatory role of the Th17 cytokine interleukin-22 in collagen-induced arthritis in C57BL/6 mice. *Arthritis & Rheumatism* 60 (2):390–395. doi:10.1002/art.2422019180498
99. Nakae S , Iwakura Y , Suto H , Galli SJ (2007) Phenotypic differences between Th1 and Th17 cells and negative regulation of Th1 cell differentiation by IL-17. *Journal of Leukocyte Biology* 81 (5):1258–1268. doi:10.1189/jlb.100661017307864
100. Nash PT , Florin THJ (2005) Tumour necrosis factor inhibitors. *Medical journal of Australia* 183 (4):20516097922
101. Boyman O , Hefti HP , Conrad C , Nickoloff BJ , Suter M , Nestle FO (2004) Spontaneous Development of Psoriasis in a New Animal Model Shows an Essential Role for Resident T Cells and Tumor Necrosis Factor- α . *The Journal of Experimental Medicine* 199 (5):731–736. doi:10.1084/jem.2003148214981113
102. Azuma Y , Kaji K , Katogi R , Takeshita S , Kudo A (2000) Tumor Necrosis Factor- α Induces Differentiation of and Bone Resorption by Osteoclasts. *Journal of Biological Chemistry* 275 (7):4858–4864. doi:10.1074/jbc.275.7.485810671521
103. Kobayashi K , Takahashi N , Jimi E , Udagawa N , Takami M , Kotake S , Nakagawa N , Kinoshita M , Yamaguchi K , Shima N , Yasuda H , Morinaga T , Higashio K , Martin TJ , Suda T (2000) Tumor Necrosis Factor α Stimulates Osteoclast Differentiation by a Mechanism Independent of the Odf/Rankl–Rank Interaction. *The Journal of Experimental Medicine* 191 (2):275–28610637272
104. Olivieri I , D'Angelo S , Palazzi C , Padula A (2014) Advances in the management of psoriatic arthritis. *Nature Reviews Rheumatology* 10 (9):531–54225003762
105. Uyemura K , Yamamura M , Fivenson DF , Modlin RL , Nickoloff BJ (1993) The cytokine network in lesional and lesion-free psoriatic skin is characterized by a T-helper type 1 cell-mediated response. *Journal of investigative dermatology* 101 (5):701–7057693825
106. Veldhoen M , Hocking RJ , Atkins CJ , Locksley RM , Stockinger B (2006) TGF β in the Context of an Inflammatory Cytokine Milieu Supports De Novo Differentiation of IL-17-Producing T Cells. *Immunity* 24 (2):179–189. doi:10.1016/j.immuni.2006.01.00116473830

107. Park H , Li Z , Yang XO , Chang SH , Nurieva R , Wang Y-H , Wang Y , Hood L , Zhu Z , Tian Q , Dong C (2005) A distinct lineage of CD4 T cells regulates tissue inflammation by producing interleukin 17. *Nat Immunol* 6 (11):1133–1141. doi:http://www.nature.com/ni/journal/v6/n11/suppinf/ni1261_S1.html16200068
108. Harrington LE , Hatton RD , Mangan PR , Turner H , Murphy TL , Murphy KM , Weaver CT (2005) Interleukin 17-producing CD4+ effector T cells develop via a lineage distinct from the T helper type 1 and 2 lineages. *Nat Immunol* 6 (11):1123–1132. doi:http://www.nature.com/ni/journal/v6/n11/suppinf/ni1254_S1.html16200070
109. Murphy CA , Langrish CL , Chen Y , Blumenschein W , McClanahan T , Kastelein RA , Sedgwick JD , Cua DJ (2003) Divergent Pro- and Antiinflammatory Roles for IL-23 and IL-12 in Joint Autoimmune Inflammation. *The Journal of Experimental Medicine* 198 (12):1951–1957. doi:10.1084/jem.2003089614662908
110. Cua DJ , Sherlock J , Chen Y , Murphy CA , Joyce B , Seymour B , Lucian L , To W , Kwan S , Churakova T , Zurawski S , Wiekowski M , Lira SA , Gorman D , Kastelein RA , Sedgwick JD (2003) Interleukin-23 rather than interleukin-12 is the critical cytokine for autoimmune inflammation of the brain. *Nature* 421 (6924):744–748. doi:http://www.nature.com/nature/journal/v421/n6924/suppinf/nature01355_S1.html12610626
111. Gran B , Zhang G-X , Yu S , Li J , Chen X-H , Ventura ES , Kamoun M , Rostami A (2002) IL-12p35-Deficient Mice Are Susceptible to Experimental Autoimmune Encephalomyelitis: Evidence for Redundancy in the IL-12 System in the Induction of Central Nervous System Autoimmune Demyelination. *The Journal of Immunology* 169 (12):7104–7110. doi:10.4049/jimmunol.169.12.710412471147
112. Cargill M , Schrodi Steven J , Chang M , Garcia Veronica E , Brandon R , Callis Kristina P , Matsunami N , Ardlie Kristin G , Civello D , Catanese Joseph J , Leong Diane U , Panko Jackie M , McAllister Linda B , Hansen Christopher B , Papenfuss J , Prescott Stephen M , White Thomas J , Leppert Mark F , Krueger Gerald G , Begovich Ann B (2007) A Large-Scale Genetic Association Study Confirms IL12B and Leads to the Identification of IL23R as Psoriasis-Risk Genes. *American Journal of Human Genetics* 80 (2):273–39017236132
113. Loser K , Mehling A , Loeser S , Apelt J , Kuhn A , Grabbe S , Schwarz T , Penninger JM , Beissert S (2006) Epidermal RANKL controls regulatory T-cell numbers via activation of dendritic cells. *Nat Med* 12 (12):1372–1379. doi:http://www.nature.com/nm/journal/v12/n12/suppinf/nm1518_S1.html17143276
114. Sugiyama H , Gyulai R , Toichi E , Garaczi E , Shimada S , Stevens SR , McCormick TS , Cooper KD (2005) Dysfunctional Blood and Target Tissue CD4(+)CD25(high) Regulatory T Cells in Psoriasis: Mechanism Underlying Unrestrained Pathogenic Effector T Cell Proliferation. *Journal of immunology* (Baltimore, Md : 1950) 174 (1):164–173
115. Toberer F , Sykora J , Göttel D , Ruland V , Hartschuh W , Enk A , Luger TA , Beissert S , Loser K , Joos S , Krammer PH , Kuhn A (2011) Tissue microarray analysis of RANKL in cutaneous lupus erythematosus and psoriasis. *Experimental Dermatology* 20 (7):600–602. doi:10.1111/j.1600-0625.2011.01303.x21692859
116. Boyle WJ , Simonet WS , Lacey DL (2003) Osteoclast differentiation and activation. *Nature* 423 (6937):337–34212748652
117. Zachariae H , Zachariae R , Blomqvist K , Davidsson S , Molin L , Mork C , Sigurgeirsson B (2002) Quality of life and prevalence of arthritis reported by 5,795 members of the Nordic Psoriasis Associations. *Acta Dermato Venereologica* 82 (2):108–11312125937
118. Gudjonsson JE , Elder JT (2007) Psoriasis: epidemiology. *Clinics in Dermatology* 25 (6):535–546. doi:10.1016/j.clindermatol.2007.08.00718021890
119. Lomholt G , Anna LA (1963) Psoriasis. Prevalence, Spontaneous Course, and Genetics. A Census Study on the Prevalence of Skin Diseases on the Faroe Islands.(Translated by Cour Anna la .)[A Thesis.]. Copenhagen,
120. Brandrup F , Green A (1975) The prevalence of psoriasis in Denmark. *allergy* 1 (136)
121. Gelfand JM , Stern RS , Nijsten T , Feldman SR , Thomas J , Kist J , Rolstad T , Margolis DJ (2005) The prevalence of psoriasis in African Americans: results from a population-based study. *Journal of the American Academy of Dermatology* 52 (1):23–2615627076

122. Shbeeb M , Uramoto KM , Gibson LE , O'Fallon WM , Gabriel SE (2000) The epidemiology of psoriatic arthritis in Olmsted County, Minnesota, USA, 1982–1991. *The Journal of rheumatology* 27 (5):1247–125010813295
123. Kaipiainen-Seppänen O (1996) INCIDENCE OF PSORIATIC ARTHRITIS IN FINLAND. *Rheumatology* 35 (12):1289–1291. doi:10.1093/rheumatology/35.12.1289
124. Kubota K , Kamijima Y , Sato T , Ooba N , Koide D , Iizuka H , Nakagawa H (2015) Epidemiology of psoriasis and palmoplantar pustulosis: a nationwide study using the Japanese national claims database. *BMJ Open* 5 (1):e006450. doi:10.1136/bmjopen-2014-006450
125. Alamanos Y , Voulgari PV , Drosos AA (2008) Incidence and prevalence of psoriatic arthritis: a systematic review. *The Journal of rheumatology* 35 (7):1354–135818464305
126. Convit J Investigation of the incidence of psoriasis among Latin American Indians. In: *Proceedings of the 13th Congress on Dermatology, 1962* p 196
127. Farber EM , Nall L (1998) Epidemiology: natural history and genetics. *Basic and clinical dermatology* 16:107–158
128. Chandran V , Raychaudhuri SP (2010) Geoepidemiology and environmental factors of psoriasis and psoriatic arthritis. *Journal of Autoimmunity* 34 (3):J314–J321. doi:10.1016/j.jaut.2009.12.00120034760
129. Docampo E , Giardina E , Riveira-Muñoz E , de Cid R , Escaramís G , Perricone C , Fernández-Sueiro JL , Maymó J , González-Gay MA , Blanco FJ (2011) Deletion of LCE3C and LCE3B is a susceptibility factor for psoriatic arthritis: A study in Spanish and Italian populations and meta-analysis. *Arthritis & Rheumatism* 63 (7):1860–186521400479
130. Hüffmeier U , Bergboer JGM , Becker T , Armour JA , Traupe H , Estivill X , Riveira-Munoz E , Mössner R , Reich K , Kurrat W (2010) Replication of LCE3C–LCE3B CNV as a risk factor for psoriasis and analysis of interaction with other genetic risk factors. *Journal of Investigative Dermatology* 130 (4):979–98420016497
131. Chiraz BS , Myriam A , Ines Z , Catherine J , Fatma B , Ilhem C , Raoudha T , Hela Z , Hela F , Elyes B (2014) Deletion of late cornified envelope genes, LCE3C_LCE3B-del, is not associated with psoriatic arthritis in Tunisian patients. *Molecular biology reports* 41 (6):4141–414624566688

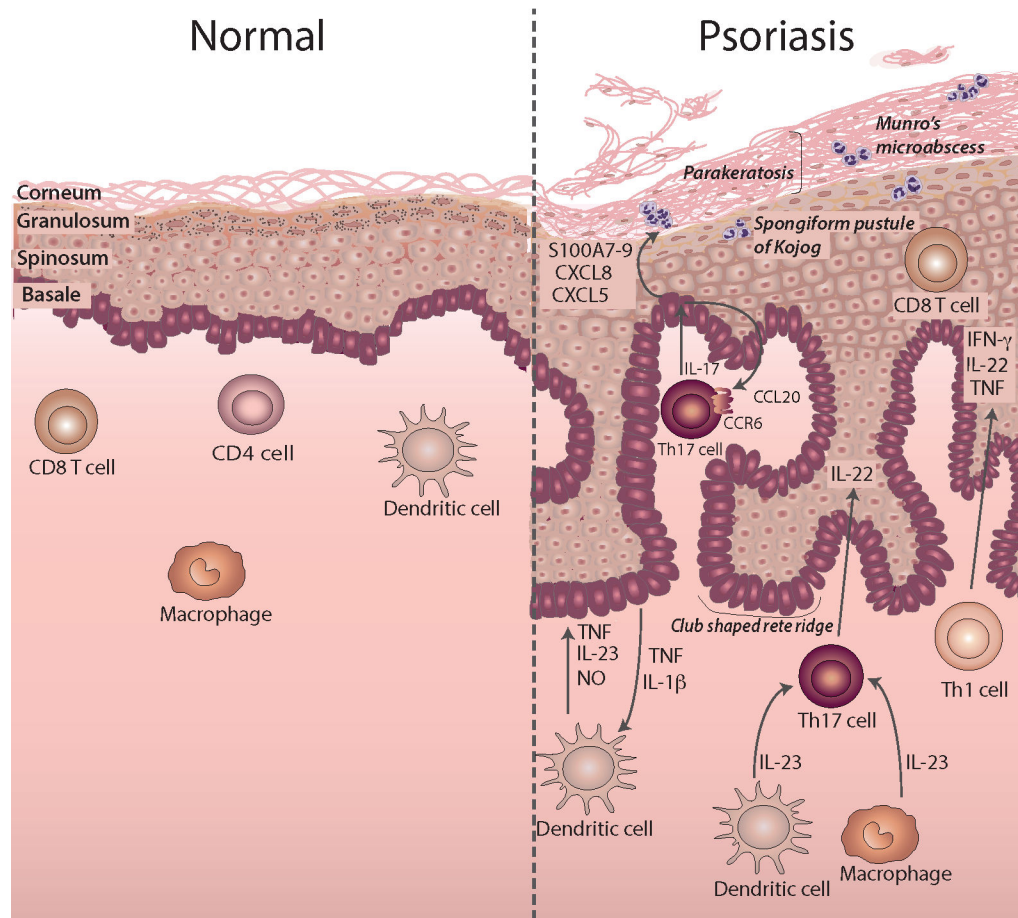


Fig. 1. Normal skin and psoriatic plaque histology.

This figure juxtaposes normal and lesional skin to highlight the characteristic histologic changes of cutaneous psoriasis. In comparison to normal skin, psoriatic plaques have: a compact, thickened stratum corneum with retained nuclei (parakeratosis), an absent granular layer, expansion of the stratum spinosum to create club shaped rete ridges, and neutrophilic collections in the stratum corneum (Munro's microabscesses) and stratum spinosum (spongiform pustules of Kojog). Cellular features common to both cutaneous psoriasis and psoriatic arthritis are shown. Cutaneous psoriasis features dendritic cells and macrophages, which promote the differentiation of T helper 17 (Th17) cells and T helper 1 (Th1) cells. In addition, dendritic cells release TNF, IL-23 and nitric oxide (NO), which stimulate keratinocyte production of TNF and IL-1 β . Products of Th17 cells include IL-22, which induces keratinocyte proliferation; IL-17, which stimulates keratinocytes to release neutrophilic chemotactic factors; IL-12 and TNF. In response to IL-17, keratinocytes release CCL20, which attracts additional CCR6⁺ Th17 cells to the skin. Th1 cells release the inflammatory factors IL-22, IFN γ and TNF.

Table 1.
Genetic Susceptibility Loci

Antigen Presentation		References
<i>HLA-Cw*0602</i>	Strongly associated with PsV, earlier disease onset and a positive family history.	12, 13
<i>HLA-B*27</i>	One of the strongest risk alleles for axial joint disease in PsA.	23–25
<i>HLA-B*39</i>	Similar to <i>HLA-B*27</i> , this allele encodes electronegative B pockets, and is associated with ankylosing spondylitis and PsA.	18
<i>HLA-B*40</i>	This allele is protective against PsA, and encodes electropositive B pockets.	18
<i>ERAP1</i>	Variants of <i>ERAP1</i> have decreased aminopeptidase activity involved in antigen processing, and is associated with <i>HLA-Cw*0602</i> and <i>HLA-B*27</i> alleles.	47
<i>PSMA6</i>	<i>PSMA6</i> encodes a subunit involved in MHC class I antigen processing.	38
Skin Barrier Function		
<i>LCE3</i>	The <i>LCE3C_LCEB-del</i> is thought to increase susceptibility to exogenous substances due to impaired barrier function in PsV.	28, 30, 31
Innate Immune Response		
<i>CARD14</i>	<i>CARD14</i> activates NF- κ B which upregulates IL-8 and CCL20 in skin, and controls early osteoclast differentiation in bone.	34–36
<i>NOS2</i>	<i>NOS2</i> encodes inducible nitric oxide synthase, which has increased expression in psoriatic plaques and synovium.	39–42
<i>TNIP1, TNFAIP3</i>	These genes control the ubiquitination and degradation of I κ B-a, which inhibits NF- κ B transcription by retaining it in the cytoplasm.	44–45
<i>NFKBIA</i>	<i>NFKBIA</i> encodes I κ B-a, which is an inhibitor of NF- κ B signaling.	38
Adaptive Immune Response		
<i>IL12B</i>	Significantly increased levels of <i>IL12B</i> gene expression have been identified in psoriatic plaques. <i>IL12B</i> encodes the common subunit of IL-12 and IL-23.	28, 62
<i>IL23R, IL23A</i>	<i>IL23R</i> encodes the receptor for IL-23, which is a cytokine critical for the survival and stabilization of Th17 cells. <i>IL23A</i> encodes the p40 subunit of IL-23.	28, 48, 59, 134
<i>IL12RB2, TYK2</i>	<i>IL12RB2</i> encodes the IL-12 receptor, and is critical in controlling Th1 lineage differentiation and responsiveness to IL-12. <i>TYK2</i> is required for IL-12B1 signaling.	28, 48, 59, 60
<i>TRAF3IP2</i>	<i>TRAF3IP2</i> encodes adaptor protein CIKS (Act1), which is recruited to IL-17RA, a significant step required for the expression of IL-17 mediated inflammatory genes.	56, 57

HLA, human leukocyte antigen; PsV, psoriasis vulgaris (plaque psoriasis); PsA, psoriatic arthritis; LCE, late cornified envelope; ERAP1, endoplasmic reticulum aminopeptidase 1; CARD14, caspase recruitment domain family member 14; TNFAIP3, TNF alpha-induced protein 3; TNIP1, TNKAIP3 interacting protein 1; IL, interleukin; TRAF3IP2, TRAF 3 interacting protein 2.