

UC Berkeley

McCown Archaeobotany Laboratory Reports

Title

Common Seed Taxa Photographs of Highland Andean Seeds

Permalink

<https://escholarship.org/uc/item/86h8f9z0>

Journal

UC Berkeley McCown Archaeobotany Laboratory Reports, 59

Author

Bruno, Maria

Publication Date

2005-05-01

Copyright Information

This work is made available under the terms of a Creative Commons Attribution-NonCommercial License, available at <https://creativecommons.org/licenses/by-nc/4.0/>

Common Seed Taxa Photos

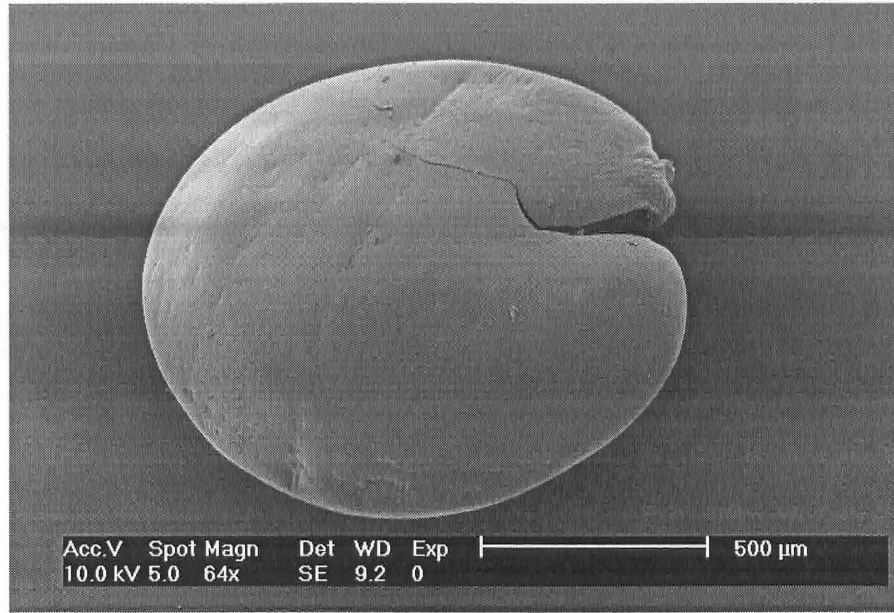
Paleoethnobotany Laboratory Report #59

May 2005

Maria Bruno
Linda Eaton

Specimen# **CAH257**

Image



Family **Amaranthaceae**

Genus **Amaranthus**

Species **sp.**

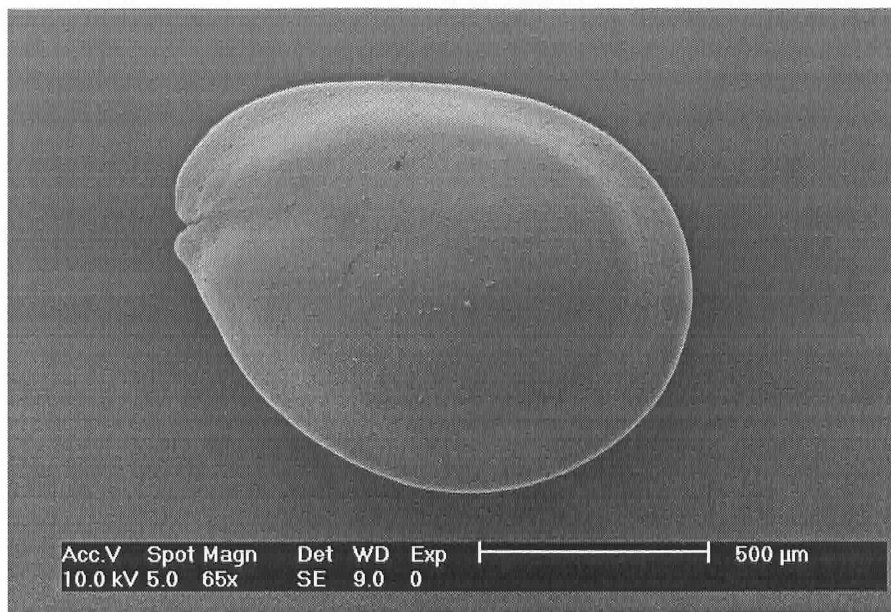
Notes **Modern**
Uncarbonized

Path **file://C:/Documents and Settings/Administrator/Desktop/SEM Project 2005/Amaranthaceae/
AMARANT1.TIF**

filename **AMARANT1.TIF**

Specimen# **CAH802**

Image



Family **Amaranthaceae**

Genus **Amaranthus**

Species **sp.**

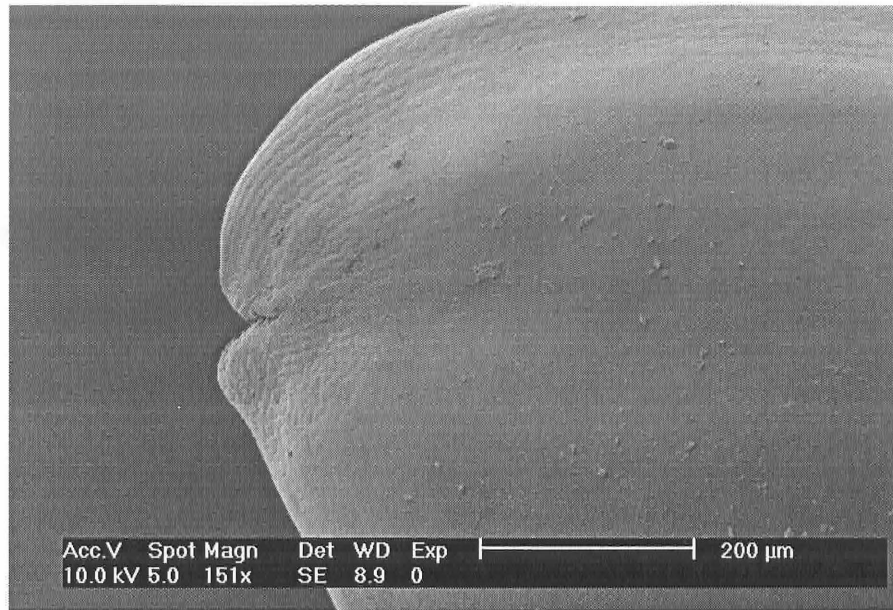
Notes **Modern**
Uncarbonized

Path file://C:/Documents and Settings/Administrator/Desktop/SEM Project 2005/Amaranthaceae/
AMARANT2.TIF

filename **AMARANT2.TIF**

Specimen# **CAH802**

Image



Family **Amaranthaceae**

Genus **Amaranthus**

Species **sp.**

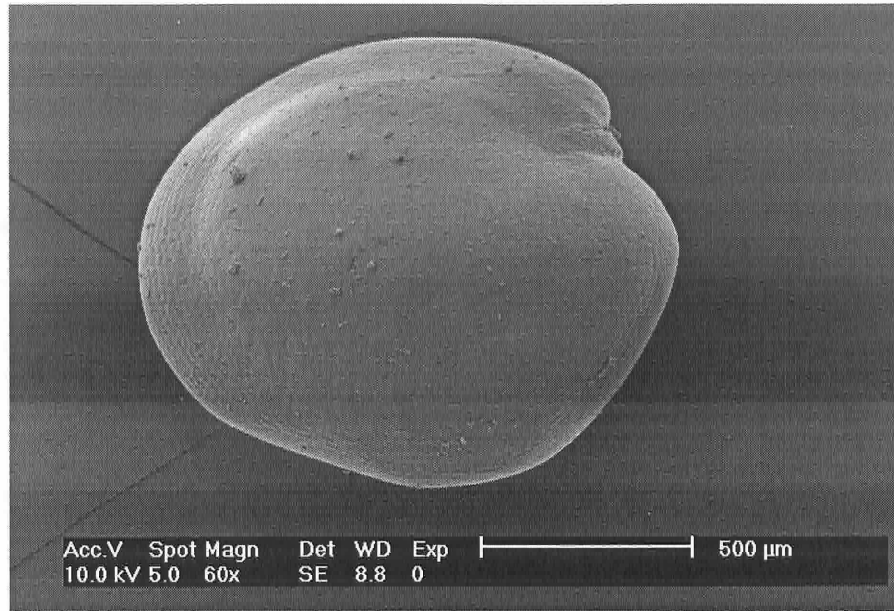
Notes **Modern**
Uncarbonized

Path file://C:/Documents and Settings/Administrator/Desktop/SEM Project 2005/Amaranthaceae/
AMARANT3.TIF

filename **AMARANT3.TIF**

Specimen# **CAH1657**

Image



Family **Amaranthaceae**

Genus **Amaranthus**

Species **cruentus**

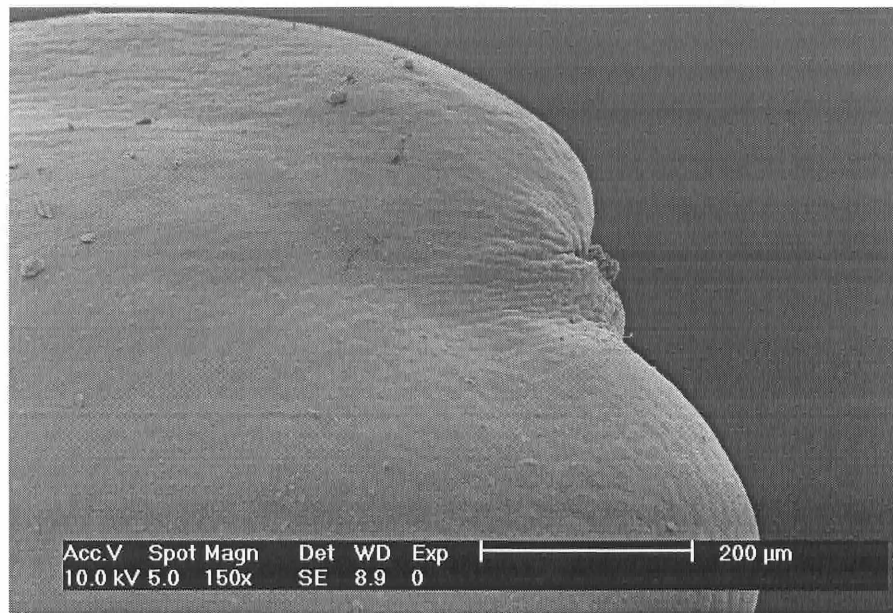
Notes **Modern**
Uncarbonized

Path file://C:/Documents and Settings/Administrator/Desktop/SEM Project 2005/Amaranthaceae/
AMARANT4.TIF

filename **AMARANT4.TIF**

Specimen# **CAH1657**

Image



Family **Amaranthaceae**

Genus **Amaranthus**

Species **cruentus**

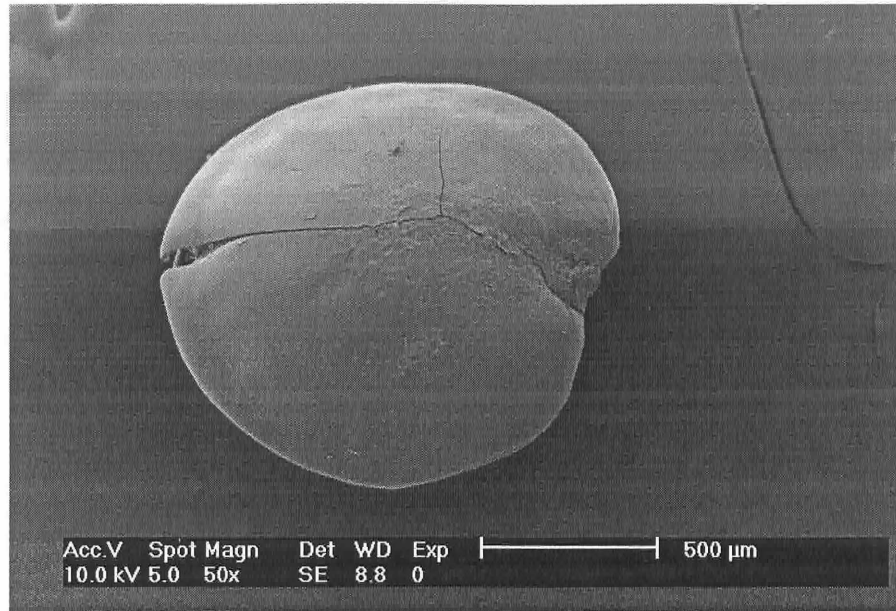
Notes **Modern**
Uncarbonized

Path file://C:/Documents and Settings/Administrator/Desktop/SEM Project 2005/Amaranthaceae/
AMARANT5.TIF

filename **AMARANT5.TIF**

Specimen# **CAH257**

Image



Family **Amaranthaceae**

Genus **Amaranthus**

Species **sp.**

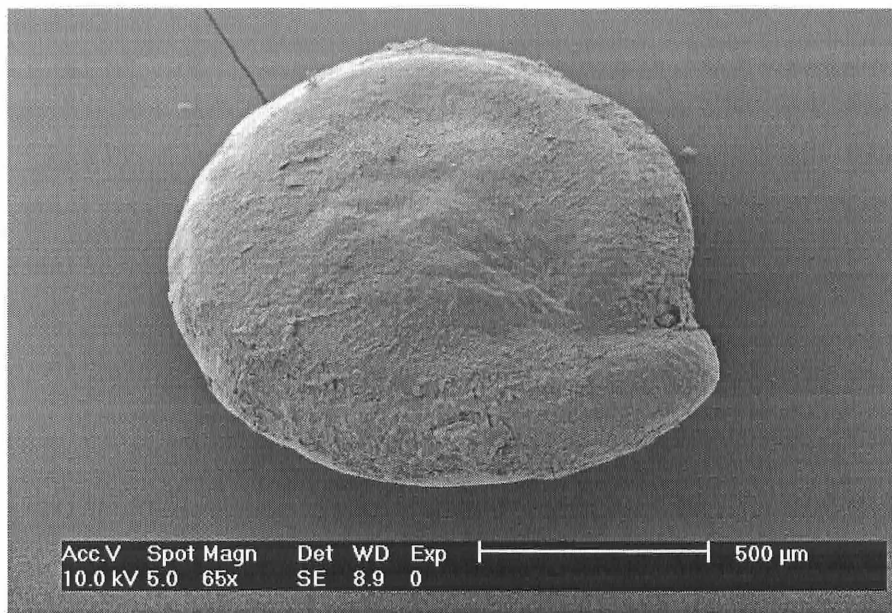
Notes **Modern**
Uncarbonized

Path **file://C:/Documents and Settings/Administrator/Desktop/SEM Project 2005/Amaranthaceae/
AMARANTH.TIF**

filename **AMARANTH.TIF**

Specimen# **CAH811**

Image



Family **Amaranthaceae**

Genus **Chenopodium**

Species **quinoa**

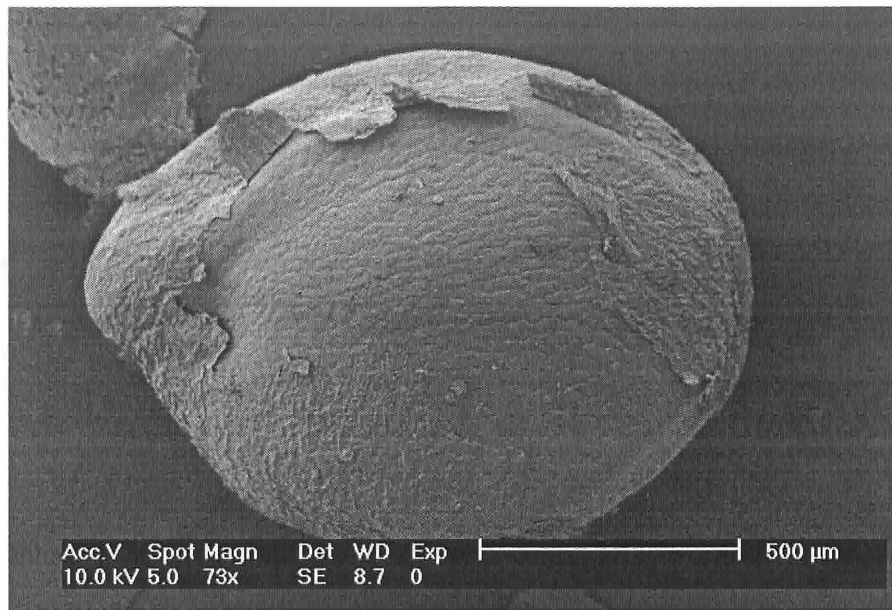
Notes **Modern**
Uncarbonized

Path **file://C:/Documents and Settings/Administrator/Desktop/SEM Project 2005/Amaranthaceae/
CHENOPOD.TIF**

filename **CHENOPOD.TIF**

Specimen# **CAH1227**

Image



Family **Amaranthaceae**

Genus **Chenopodium**

Species **pallidicaule**

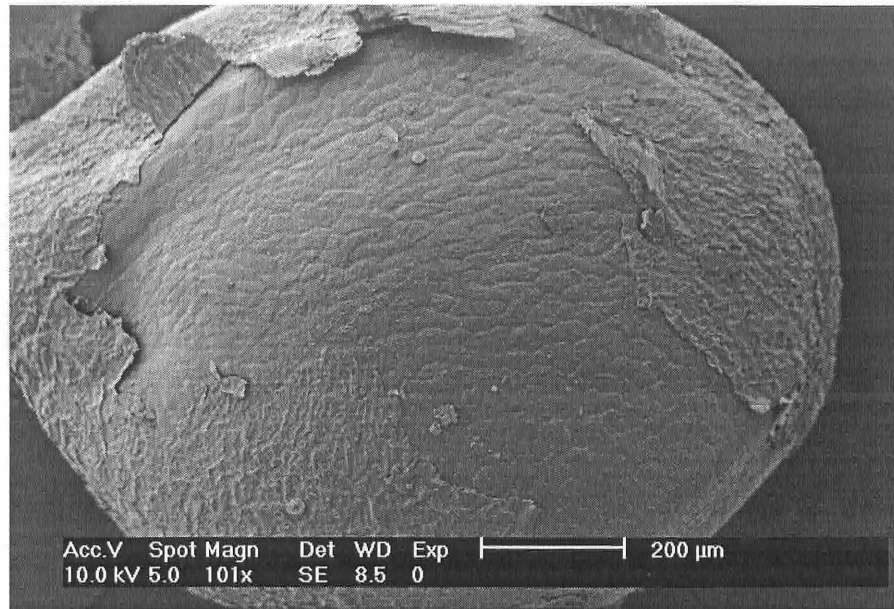
Notes **Modern**
Uncarbonized

Path file://C:/Documents and Settings/Administrator/Desktop/SEM Project 2005/Amaranthaceae/
KANAWA.TIF

filename **KANAWA.TIF**

Specimen# **CAH1227**

Image



Family **Amaranthaceae**

Genus **Chenopodium**

Species **pallidicaule**

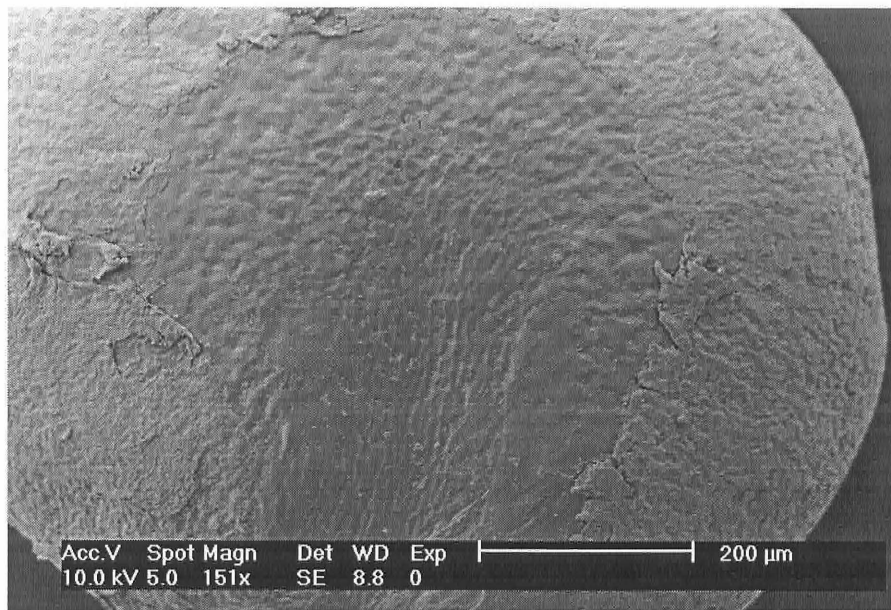
Notes **Modern**
Uncarbonized

Path file://C:/Documents and Settings/Administrator/Desktop/SEM Project 2005/Amaranthaceae/
KANAWA01.TIF

filename **KANAWA01.TIF**

Specimen# **CAH1989-92**

Image



Family **Amaranthaceae**

Genus **Chenopodium**

Species **ambrosioides**

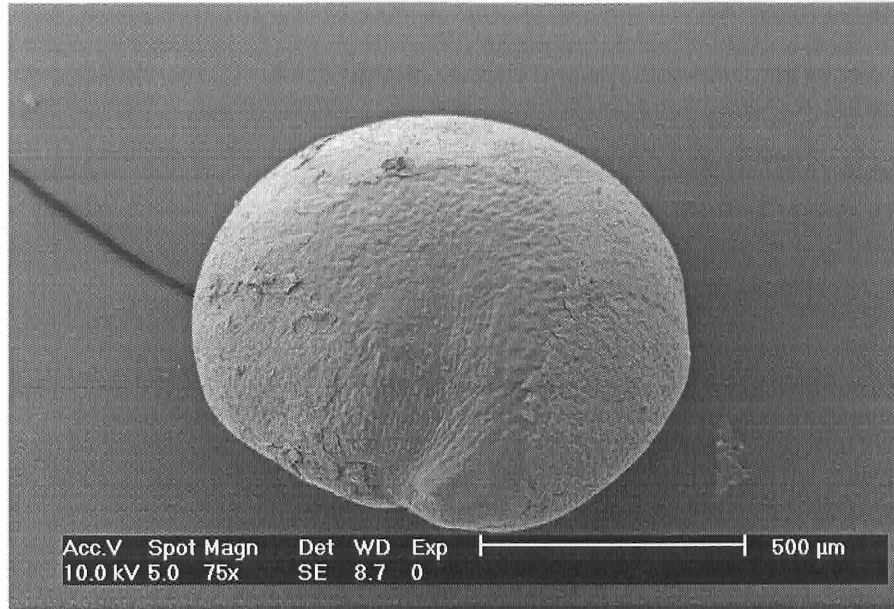
Notes **Modern**
Uncarbonized

Path file://C:/Documents and Settings/Administrator/Desktop/SEM Project 2005/Amaranthaceae/
PAIKO01.TIF

filename **PAIKO01.TIF**

Specimen# **CAH1989-92**

Image



Family **Amaranthaceae**

Genus **Chenopodium**

Species **ambrosioides**

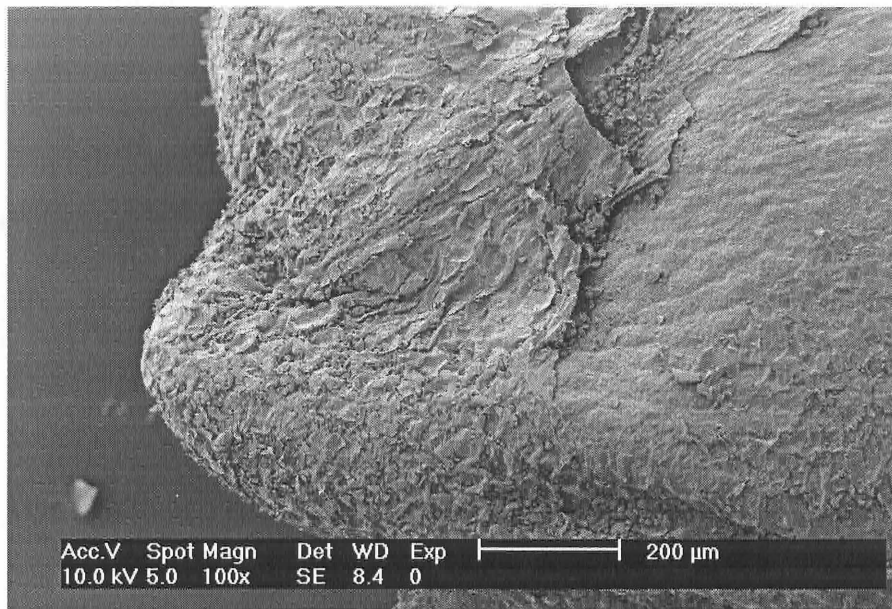
Notes **Modern**
Uncarbonized

Path file://C:/Documents and Settings/Administrator/Desktop/SEM Project 2005/Amaranthaceae/
PAIKO02.TIF

filename **PAIKO02.TIF**

Specimen# **CAH811**

Image



Family **Amaranthaceae**

Genus **Chenopodium**

Species **quinoa**

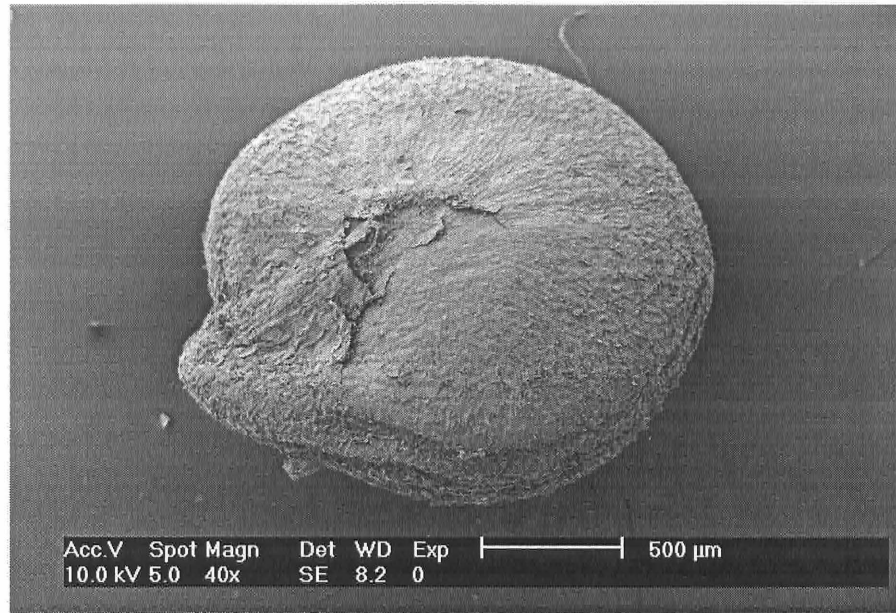
Notes **Modern**
Uncarbonized

Path file://C:/Documents and Settings/Administrator/Desktop/SEM Project 2005/Amaranthaceae/
QUINOA01.TIF

filename **QUINOA01.TIF**

Specimen# **CAH811**

Image



Family **Amaranthaceae**

Genus **Chenopodium**

Species **quinoa**

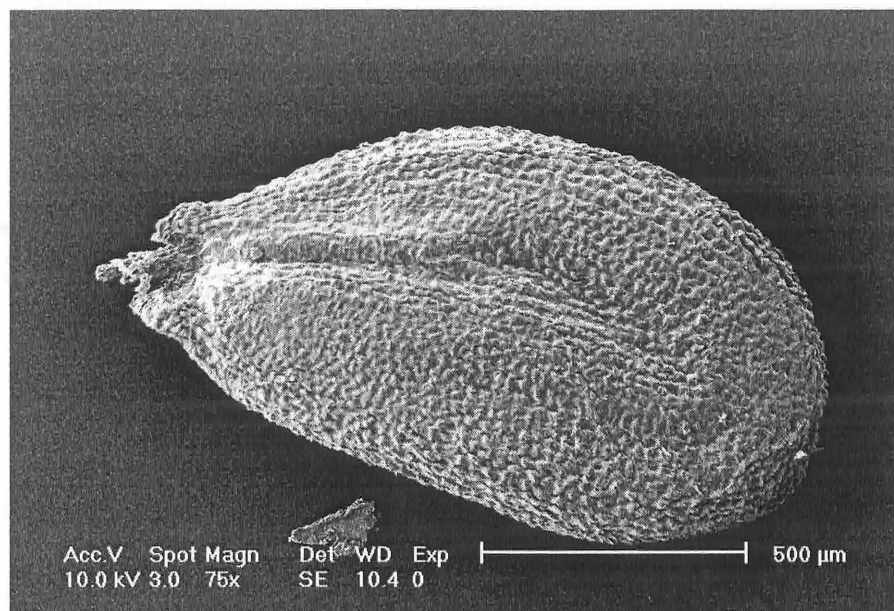
Notes **Modern**
Uncarbonized

Path **file://C:/Documents and Settings/Administrator/Desktop/SEM Project 2005/Amaranthaceae/
QUINOA02.TIF**

filename **QUINOA02.TIF**

Specimen# **MCB209**

Image



Family **Brassicaceae**

Genus **Coronopus**

Species **didymus**

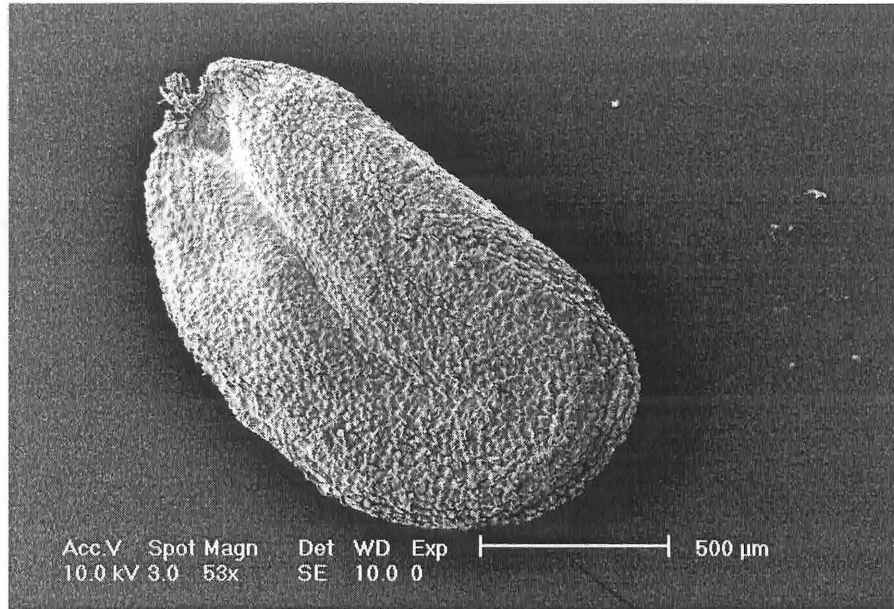
Notes **Modern**
Uncarbonized

Path file://C:/Documents and Settings/Administrator/Desktop/SEM Project 2005/14April2005/
BRASS.TIF

filename **BRASS.TIF**

Specimen# **MCB70**

Image



Family **Brassicaceae**

Genus **Lepidium**

Species **bipinnatifidum**

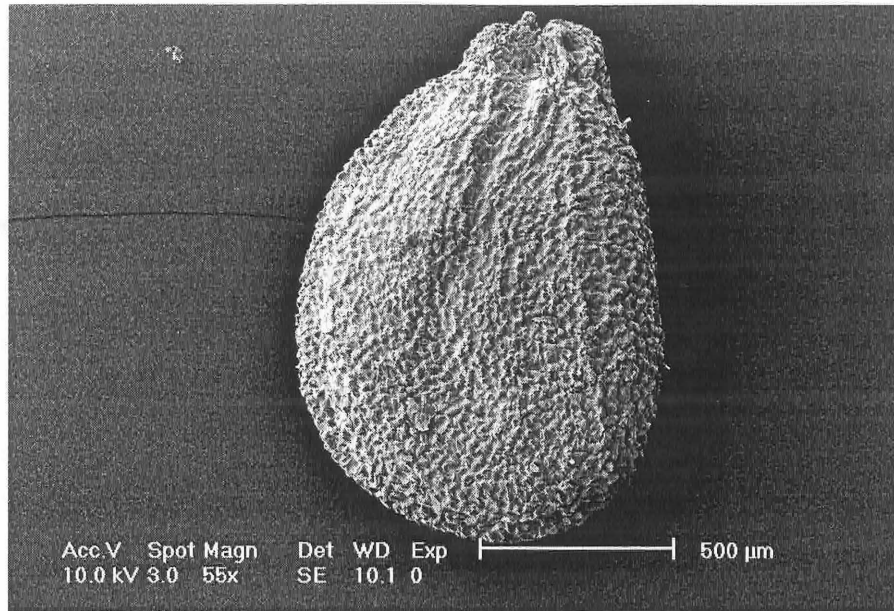
Notes **Modern**
Uncarbonized

Path file://C:/Documents and Settings/Administrator/Desktop/SEM Project 2005/14April2005/
CRUCL.TIF

filename **CRUCL.TIF**

Specimen# **MCB70**

Image



Family **Brassicaceae**

Genus **Lepidium**

Species **bipinnatifidum**

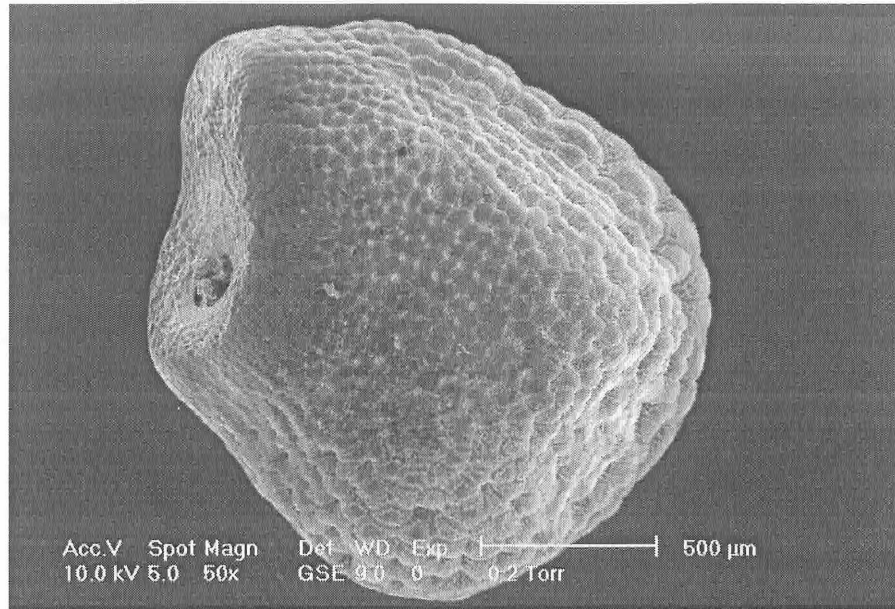
Notes **Modern**
Uncarbonized

Path file://C:/Documents and Settings/Administrator/Desktop/SEM Project 2005/14April2005/
CRUCI01.TIF

filename **CRUCI01.TIF**

Specimen# **CAH511**

Image



Family **Cactaceae**

Genus **Echinocactus**

Species **sp.**

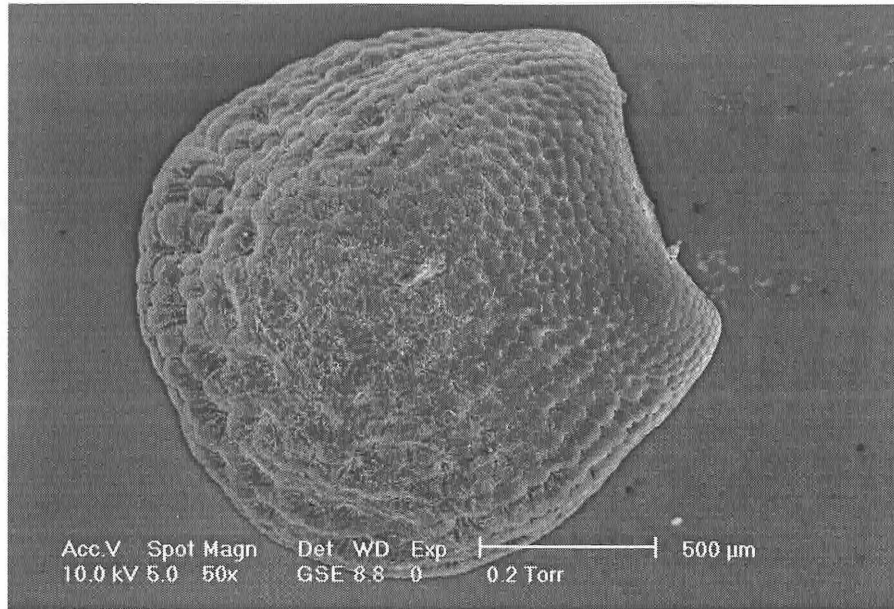
Notes **Modern**
Uncarbonized
Two specimens

Path **file://C:/Documents and Settings/Administrator/Desktop/SEM Project 2005/7FEB2005/
Echino1.tif**

filename **Echino1.tif**

Specimen# **CAH511**

Image



Family **Cactaceae**

Genus **Echinocactus**

Species **sp.**

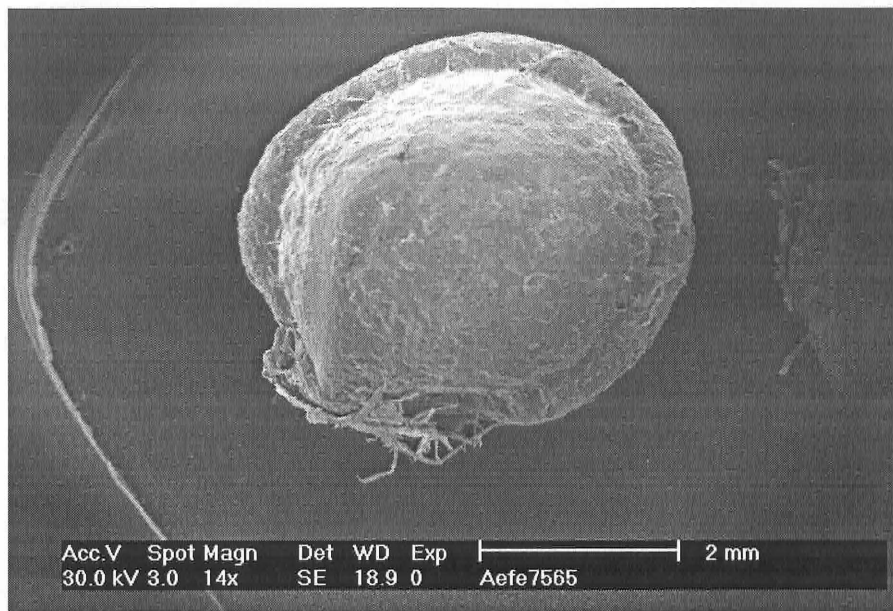
Notes **Modern**
Uncarbonized
Two specimens

Path **file://C:/Documents and Settings/Administrator/Desktop/SEM Project 2005/7FEB2005/
Echino2.tif**

filename **Echino2.tif**

Specimen# **MCB20**

Image



Family **Cactaceae**

Genus **Maihueniopsis**

Species **cf. bolivana**

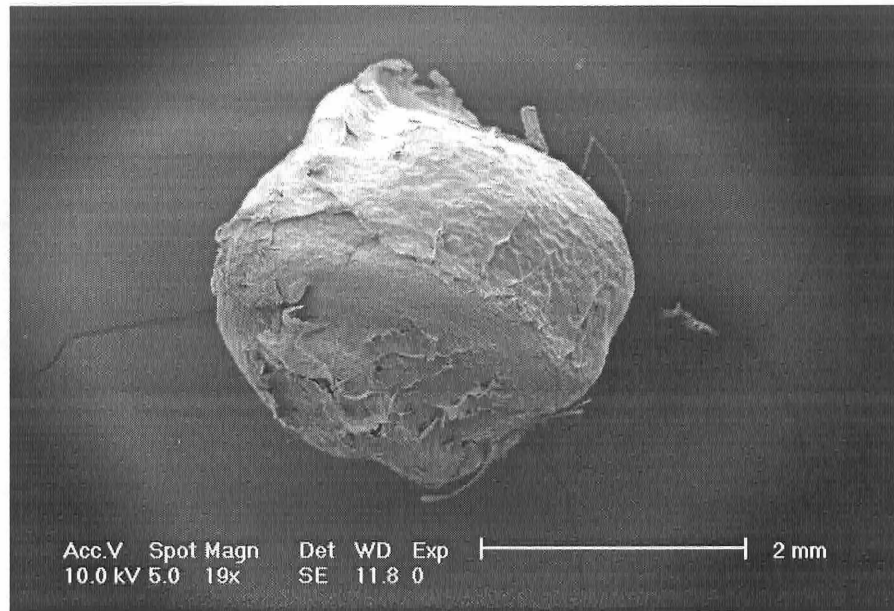
Notes **Modern**
Uncarbonized

Path file://C:/Documents and Settings/Administrator/Desktop/SEM Project 2005/31MARCH2005/MAIHUENIOPSIS.tif

filename **MAIHUENIOPSIS.tif**

Specimen# **MCB20**

Image



Family **Cactaceae**

Genus **Maihueniopsis**

Species **cf. bolivana**

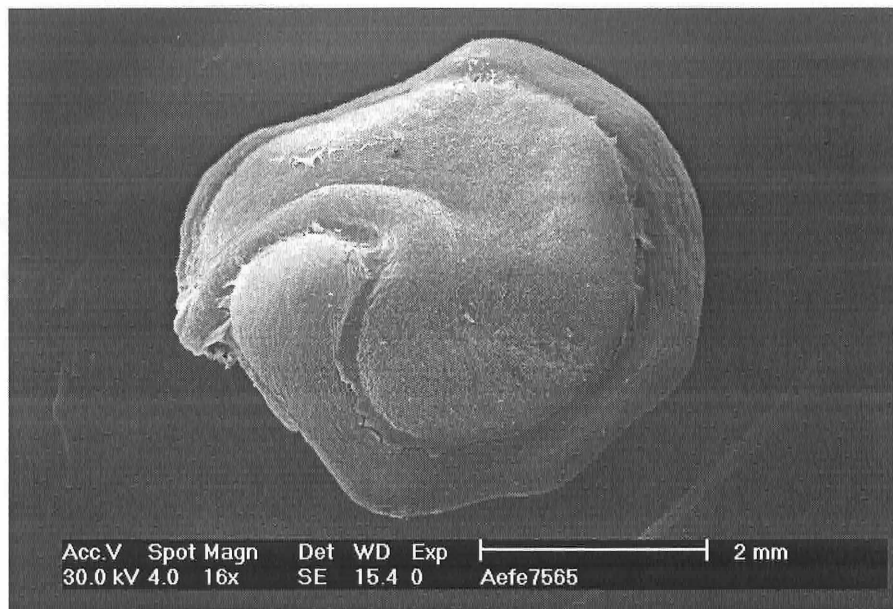
Notes **Modern**
Uncarbonized

Path file://C:/Documents and Settings/Administrator/Desktop/SEM Project 2005/21April2005/
NUM3.TIF

filename **NUM3.TIF**

Specimen# **CAH1629**

Image



Family **Cactaceae**

Genus **Opuntia**

Species **robusta**

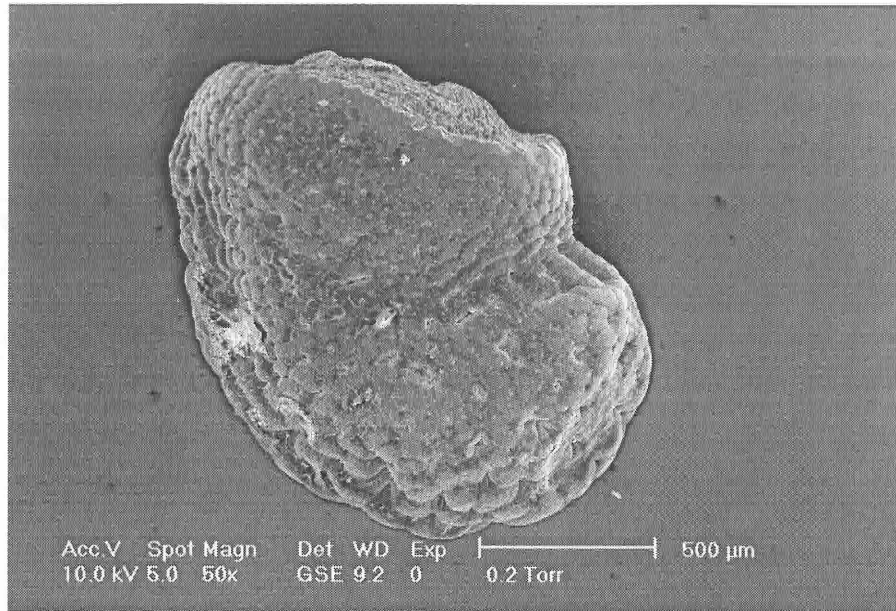
Notes **Modern**
Uncarbonized

Path file://C:/Documents and Settings/Administrator/Desktop/SEM Project 2005/31MARCH2005/
OPUNTIA1.tif

filename **OPUNTIA1.tif**

Specimen# **CAHS5200**

Image



Family **Cactaceae**

Genus **Tachocereus**

Species **pachanol**

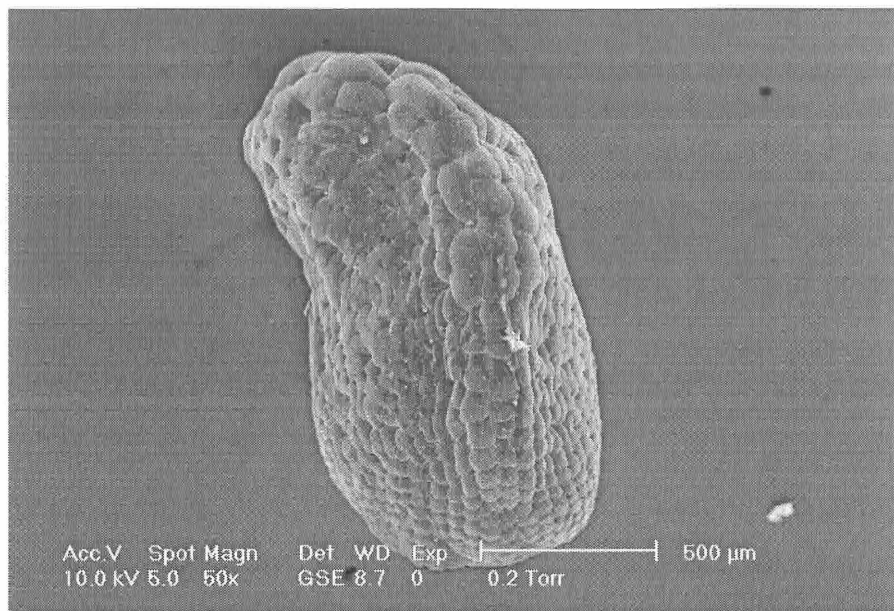
Notes **Modern**
Uncarbonized

Path **file://C:/Documents and Settings/Administrator/Desktop/SEM Project 2005/7FEB2005/
Tpachanol1.tif**

filename **Tpachanol1.tif**

Specimen# **CAHS5200**

Image



Family **Cactaceae**

Genus **Tachocereus**

Species **pachanol**

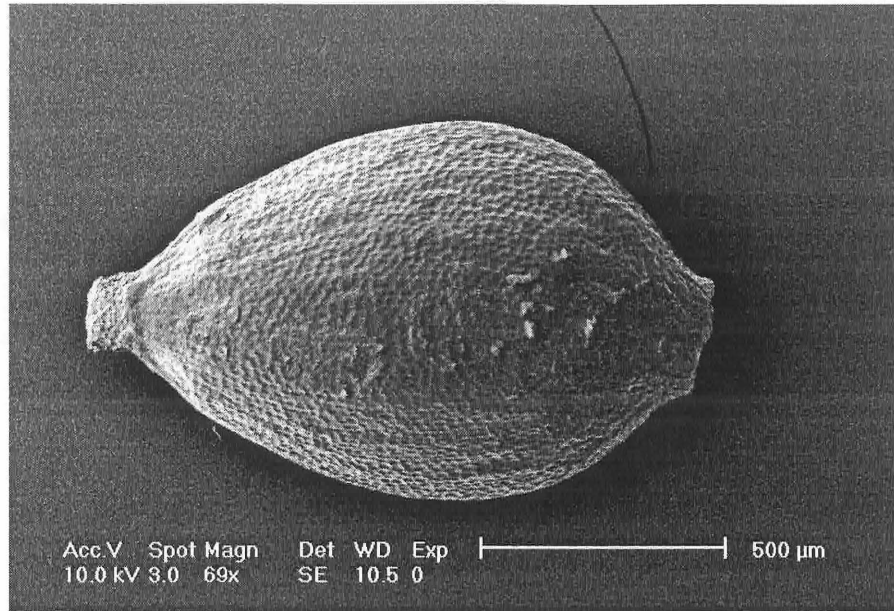
Notes **Modern**
Uncarbonized

Path file://C:/Documents and Settings/Administrator/Desktop/SEM Project 2005/7FEB2005/
Tpachanol2.tif

filename **Tpachanol2.tif**

Specimen# **CAH516**

Image



Family **Cyperaceae**

Genus **Scirpus**

Species **sp.**

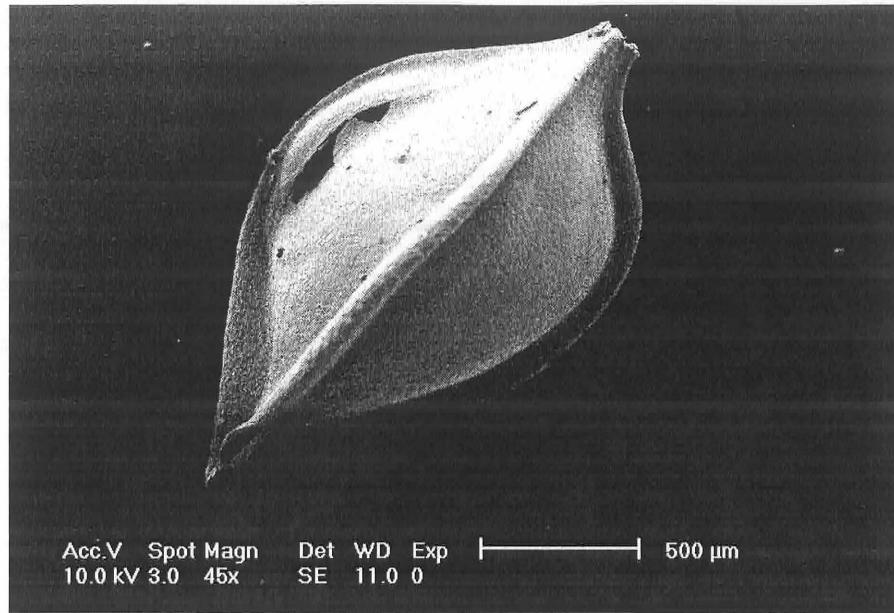
Notes **Modern
Uncarbonized**

Path **file://C:/Documents and Settings/Administrator/Desktop/SEM Project 2005/14April2005/
CYPER.TIF**

filename **CYPER.TIF**

Specimen# **CAH430**

Image



Family **Cyperaceae**

Genus **Scirpus**

Species **sp.**

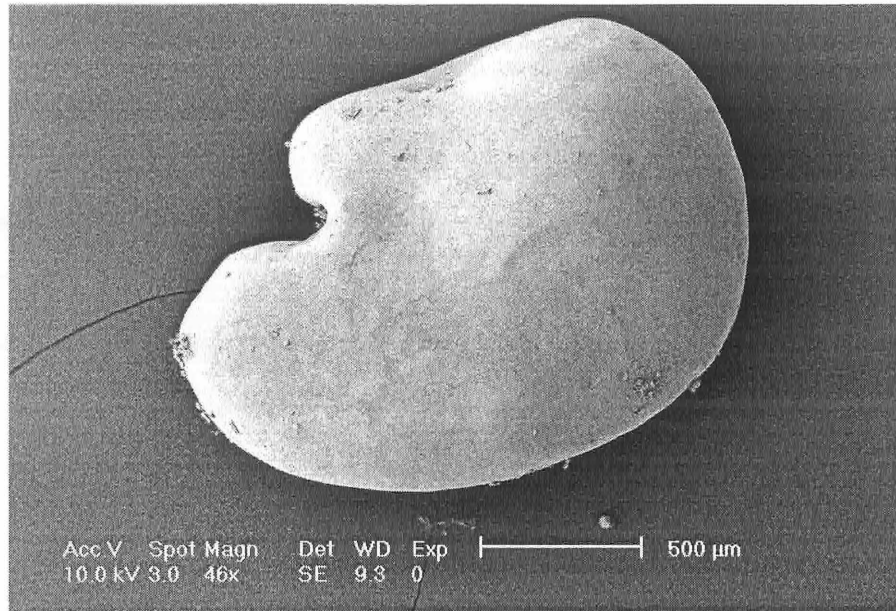
Notes **Modern**
Uncarbonized

Path **file://C:/Documents and Settings/Administrator/Desktop/SEM Project 2005/21April2005/
SCIRP.TIF**

filename **SCIRP.TIF**

Specimen# **CAH1097**

Image



Family **Fabaceae**

Genus

Species

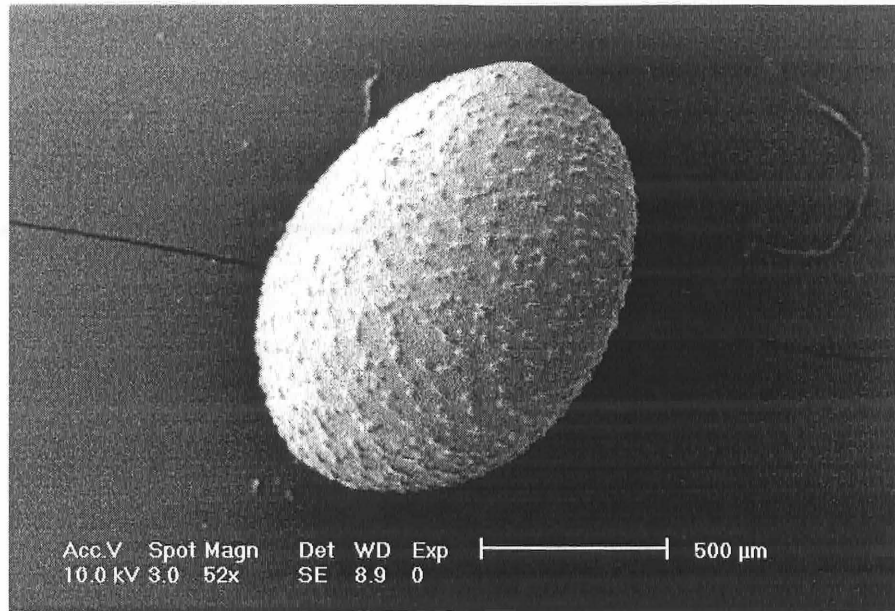
Notes **Modern
Uncarbonized**

Path **file://C:/Documents and Settings/Administrator/Desktop/SEM Project 2005/14April2005/
FABA01.TIF**

filename **FABA01.TIF**

Specimen# **CAH438**

Image



Family **Fabaceae**

Genus

Species

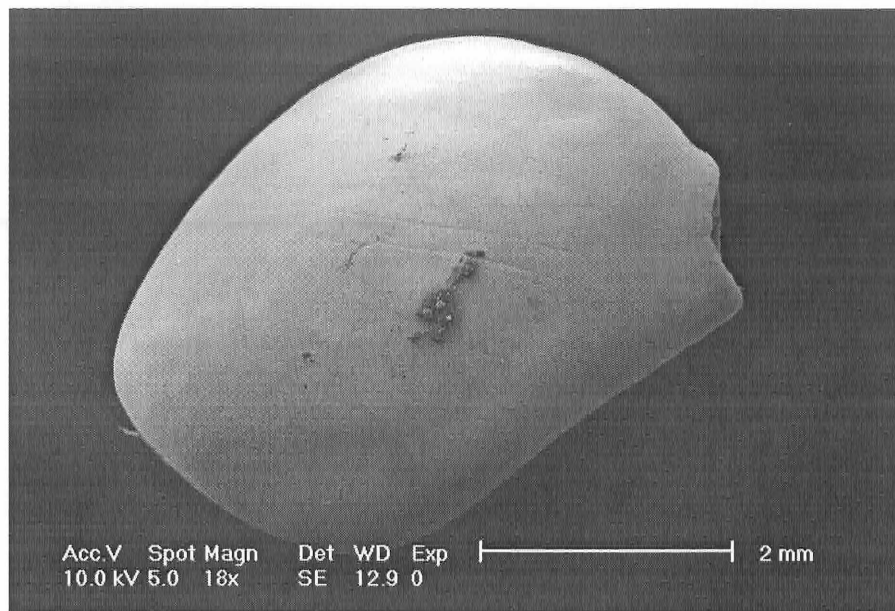
Notes **Modern**
Uncarbonized

Path file://C:/Documents and Settings/Administrator/Desktop/SEM Project 2005/14April2005/
FABA02.TIF

filename **FABA02.TIF**

Specimen# **CAH604**

Image



Family **Fabaceae**

Genus **Lupinus**

Species **mutabilis**

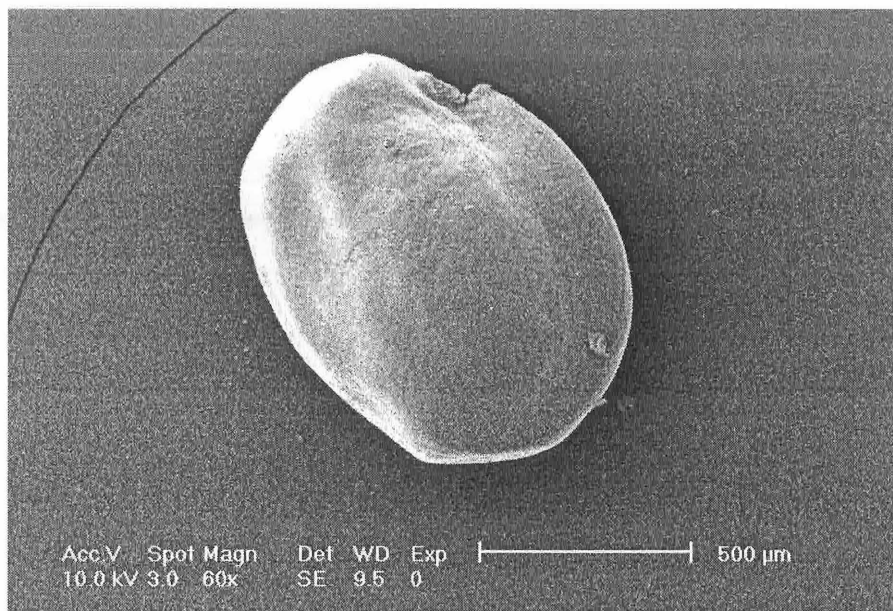
Notes **Modern**
Uncarbonized

Path file://C:/Documents and Settings/Administrator/Desktop/SEM Project 2005/21April2005/
NUMBER2.TIF

filename **NUMBER2.TIF**

Specimen# **CAH501**

Image



Family **Fabaceae**

Genus **Trifolium**

Species **sp.**

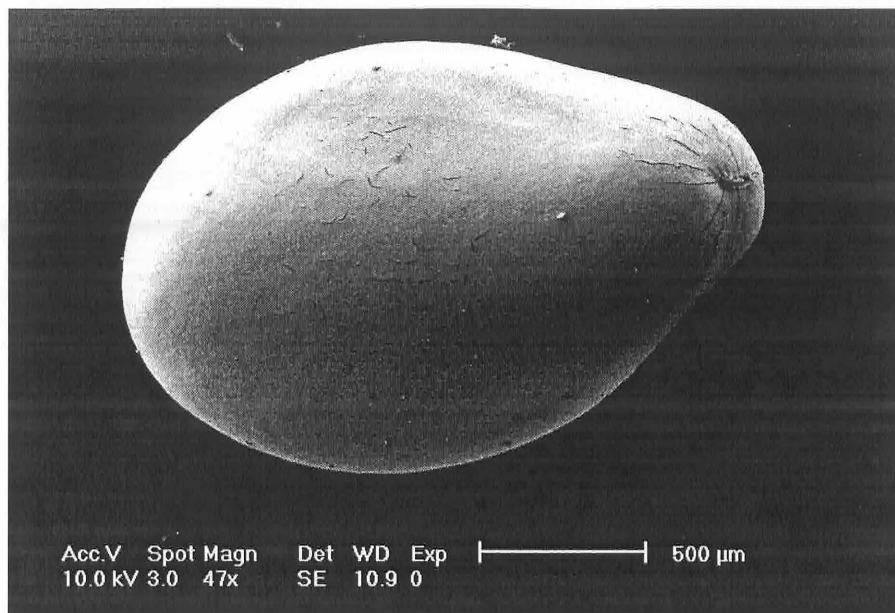
Notes **Modern**
Uncarbonized

Path file://C:/Documents and Settings/Administrator/Desktop/SEM Project 2005/14April2005/
FABA.TIF

filename **FABA.TIF**

Specimen# **CAH1216**

Image



Family **Lamiaceae**

Genus **Salvia**

Species **sp.**

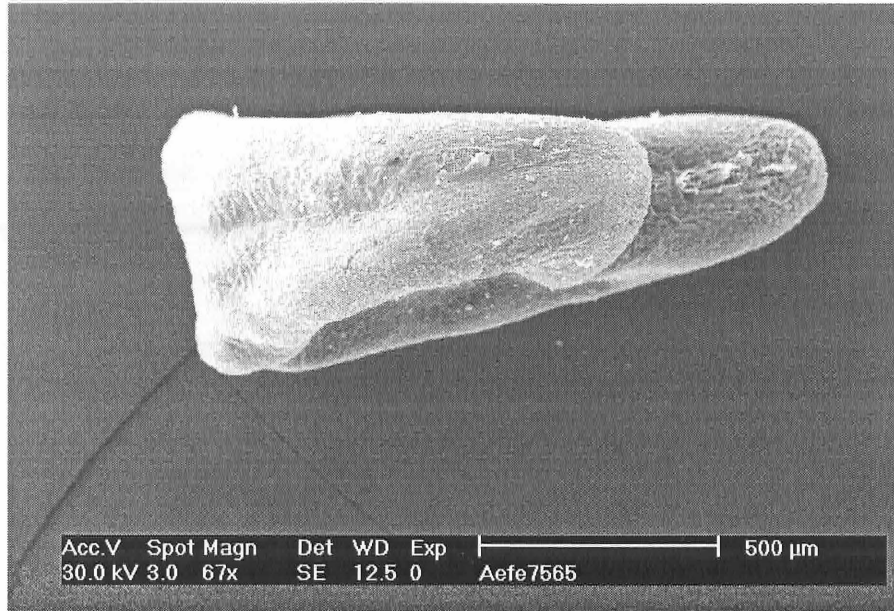
Notes **Modern
Uncarbonized**

Path file://C:/Documents and Settings/Administrator/Desktop/SEM Project 2005/21April2005/
LAMIA.TIF

filename **LAMIA.TIF**

Specimen# **CAH1099**

Image



Family **Malvaceae**

Genus

Species

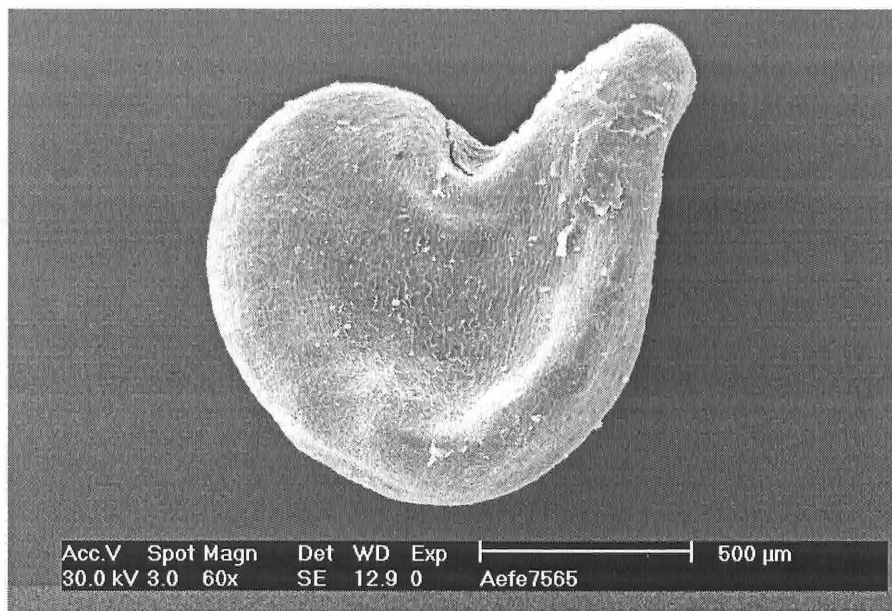
Notes **Modern**
Uncarbonized

Path file://C:/Documents and Settings/Administrator/Desktop/SEM Project 2005/31MARCH2005/
MALVA.TIF

filename **MALVA.TIF**

Specimen# **CAH1099**

Image



Family **Malvaceae**

Genus

Species

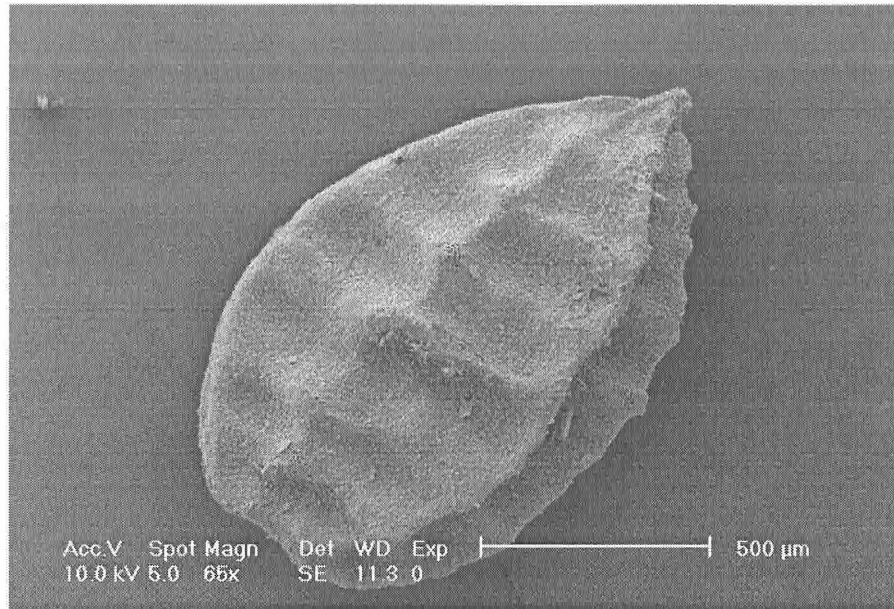
Notes **Modern**
Uncarbonized

Path file://C:/Documents and Settings/Administrator/Desktop/SEM Project 2005/31MARCH2005/
MALVA01.TIF

filename **MALVA01.TIF**

Specimen# **MCB199**

Image



Family **Oxalidaceae**

Genus **Oxalis**

Species **cf bifracta**

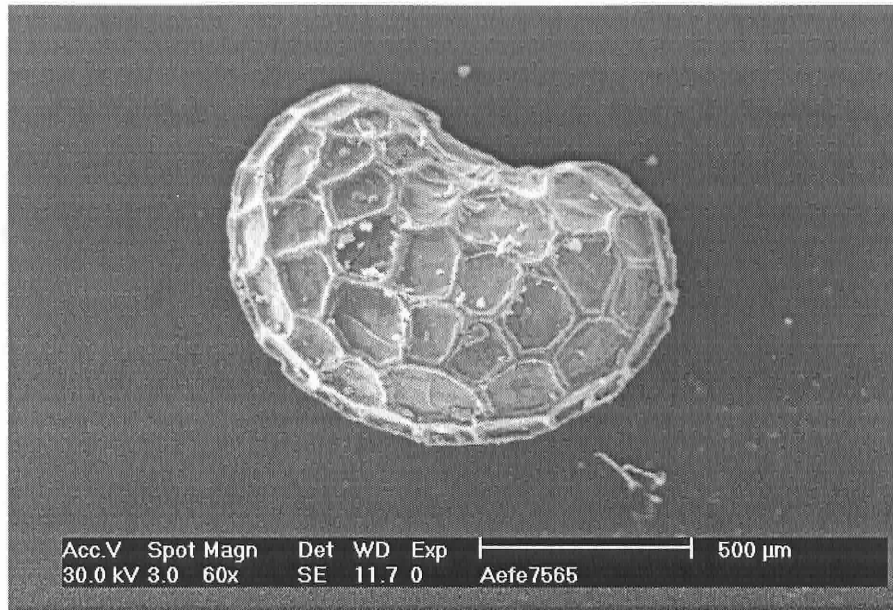
Notes **Modern
Uncarbonized**

Path **file://C:/Documents and Settings/Administrator/Desktop/SEM Project 2005/18April2005/
OXALIA.TIF**

filename **OXALIA.TIF**

Specimen# **CAH844**

Image



Family **Papaveraceae**

Genus **Papaver**

Species **sp.**

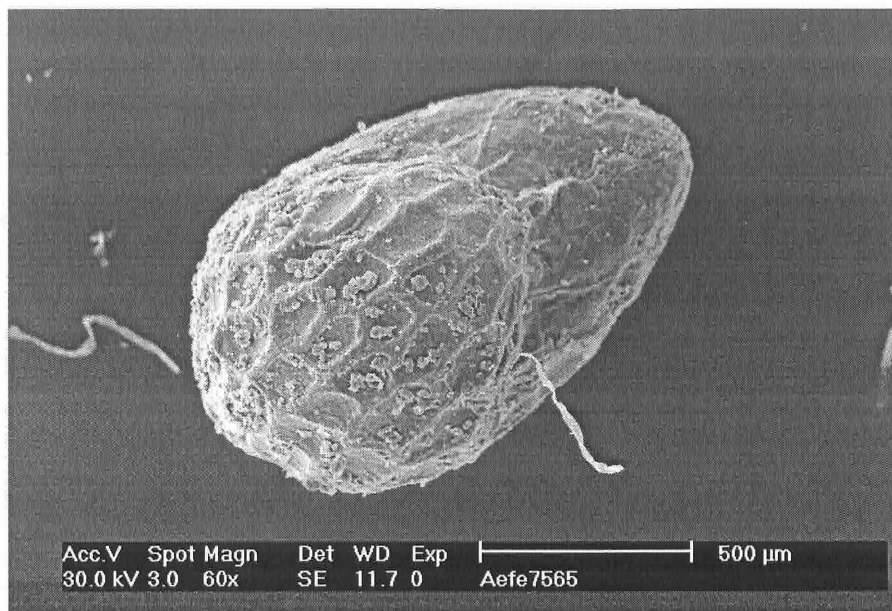
Notes **Modern**
Uncarbonized

Path file://C:/Documents and Settings/Administrator/Desktop/SEM Project 2005/31MARCH2005/
POPPY1.tif

filename **POPPY1.tif**

Specimen# **CAH844**

Image



Family **Papaveraceae**

Genus **Papaver**

Species **sp.**

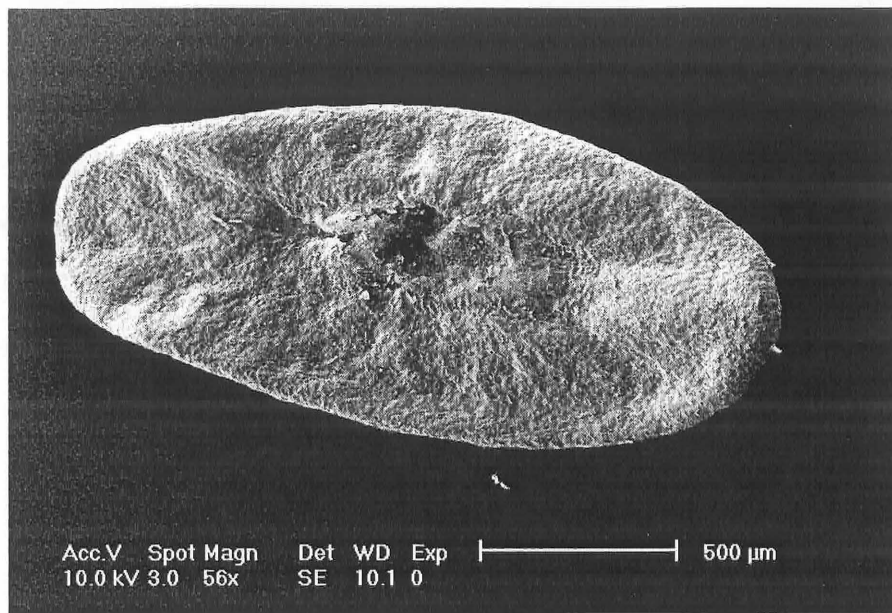
Notes **Modern**
Uncarbonized

Path file://C:/Documents and Settings/Administrator/Desktop/SEM Project 2005/31MARCH2005/
POPPY2.tif

filename **POPPY2.tif**

Specimen# **CAH1305**

Image



Family **Plantaginaceae**

Genus **Plantago**

Species **sp.**

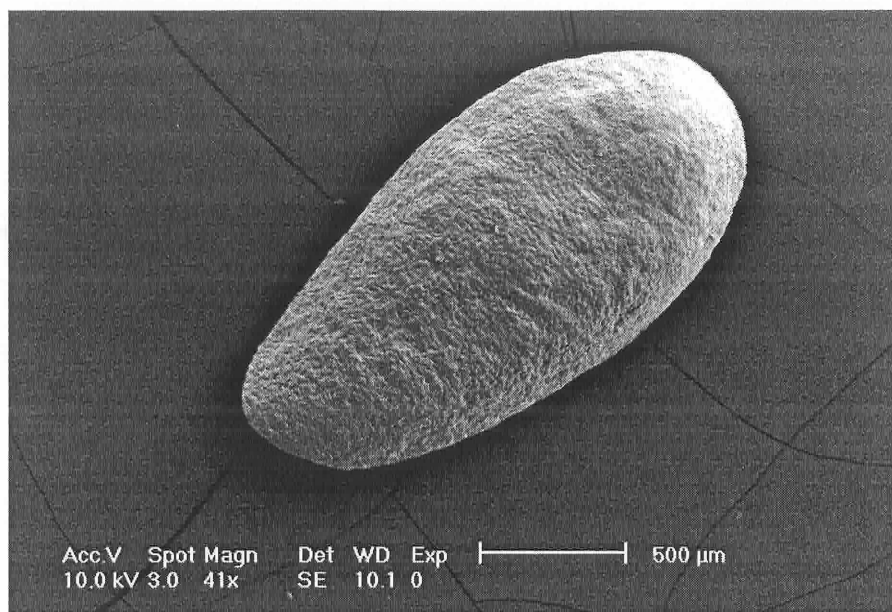
Notes **Modern**
Uncarbonized

Path file://C:/Documents and Settings/Administrator/Desktop/SEM Project 2005/14April2005/
PLANTA.TIF

filename **PLANTA.TIF**

Specimen# **CAH1305**

Image



Family **Plantaginaceae**

Genus **Plantago**

Species **sp.**

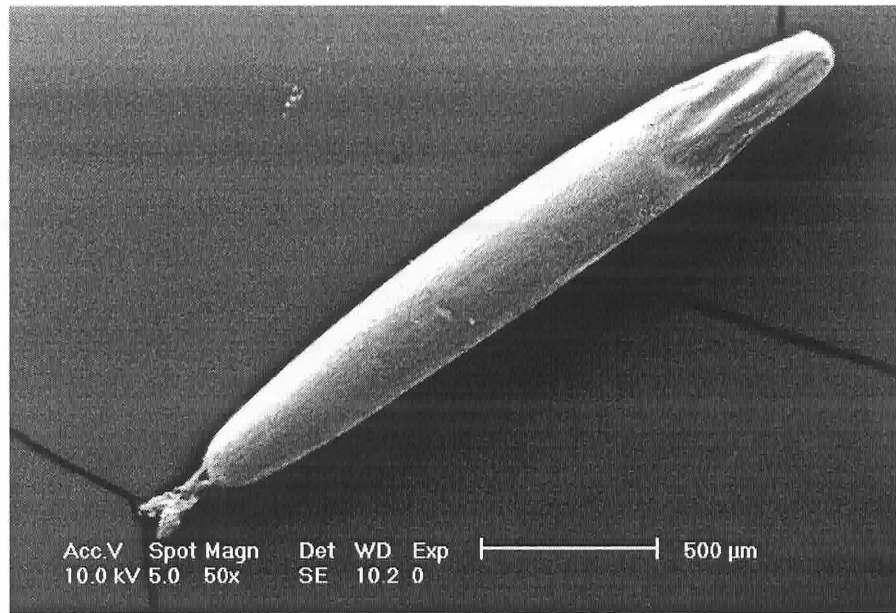
Notes **Modern**
Uncarbonized

Path file://C:/Documents and Settings/Administrator/Desktop/SEM Project 2005/21April2005/
PLANTAG.TIF

filename **PLANTAG.TIF**

Specimen# **CAH1078**

Image



Family **Poaceae**

Genus

Species

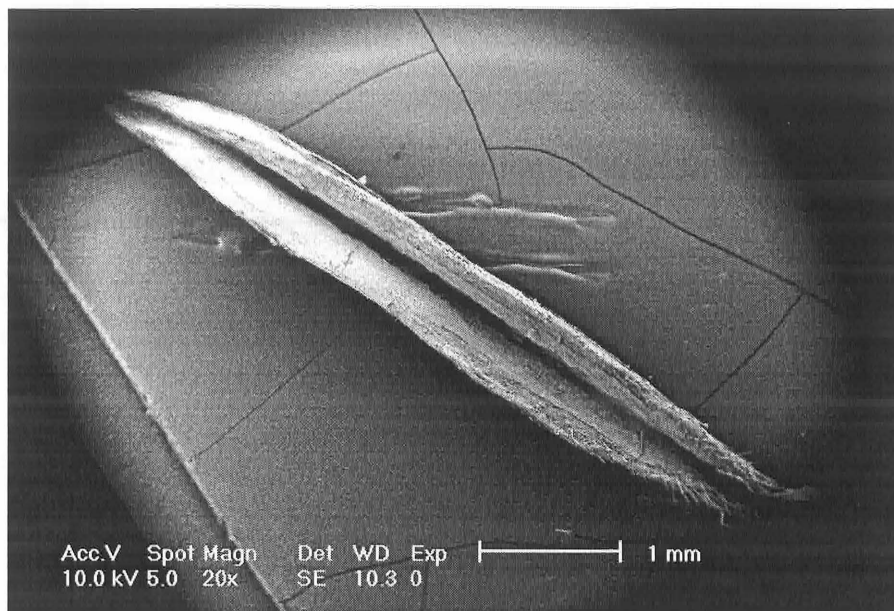
Notes **Modern**
Uncarbonized

Path file://C:/Documents and Settings/Administrator/Desktop/SEM Project 2005/Poaceae/
POACEAE.TIF

filename **POACEAE.TIF**

Specimen# **CAH397**

Image



Family **Poaceae**

Genus **Bromus**

Species **sp.**

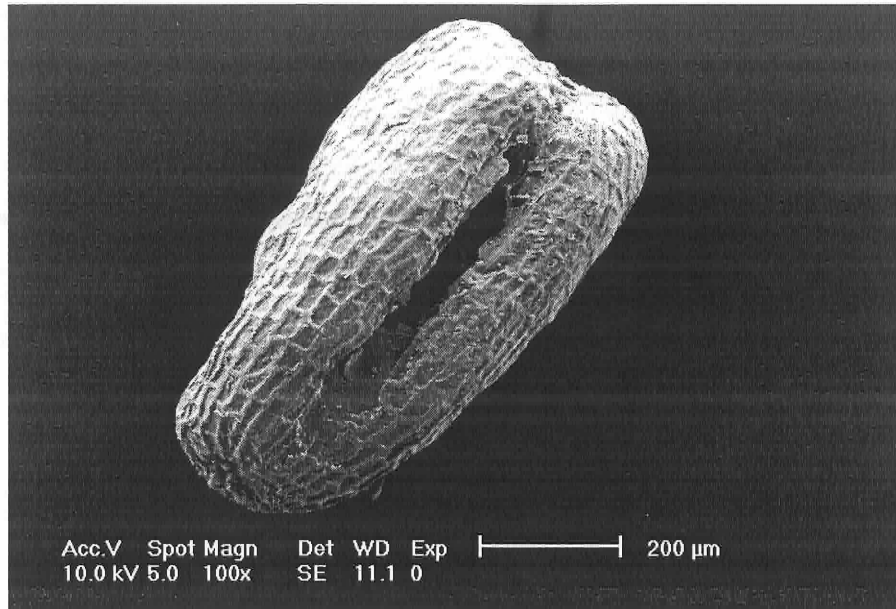
Notes **Modern**
Uncarbonized

Path **file://C:/Documents and Settings/Administrator/Desktop/SEM Project 2005/Poaceae/POBRO.TIF**

filename **POBRO.TIF**

Specimen# **CAH399**

Image



Family **Poaceae**

Genus **Eragrostis**

Species **sp**

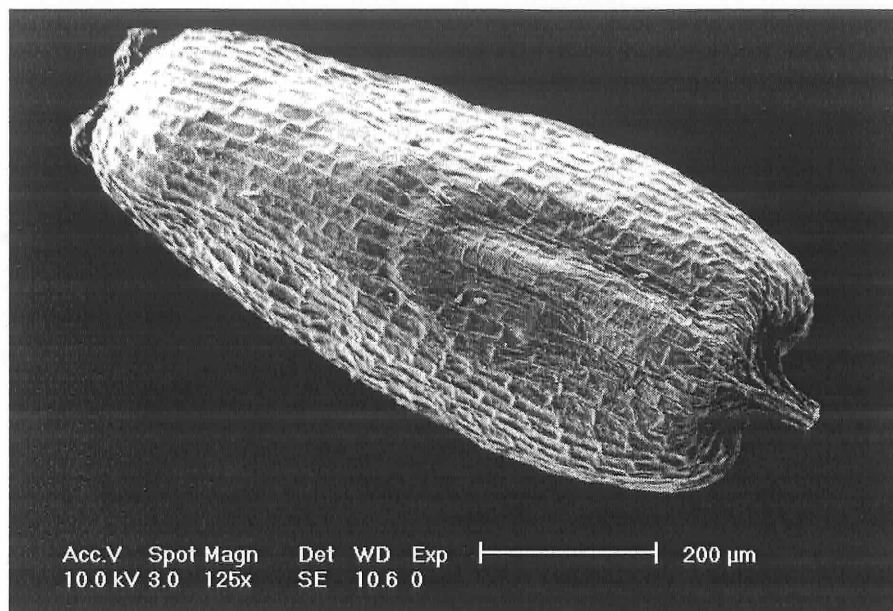
Notes **Modern**
Uncarbonized

Path **file://C:/Documents and Settings/Administrator/Desktop/SEM Project 2005/Poaceae/
POERAG.TIF**

filename **POERAG.TIF**

Specimen# **CAH399**

Image



Family **Poaceae**

Genus **Eragrostis**

Species **sp**

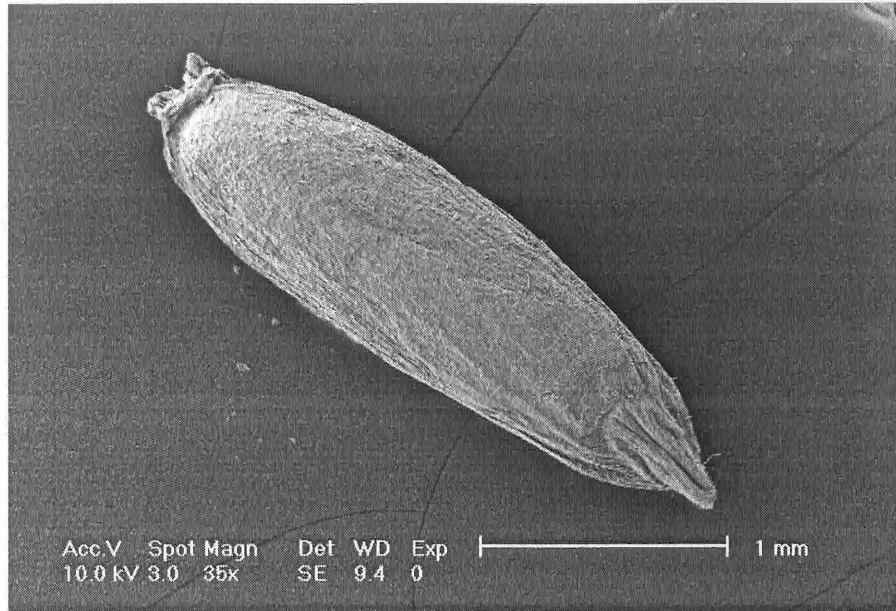
Notes **Modern**
Uncarbonized

Path **file://C:/Documents and Settings/Administrator/Desktop/SEM Project 2005/21April2005/
PERAG.TIF**

filename **PERAG.TIF**

Specimen# **MCB58**

Image



Family **Poaceae**

Genus **Festuca**

Species **dolichophylla**

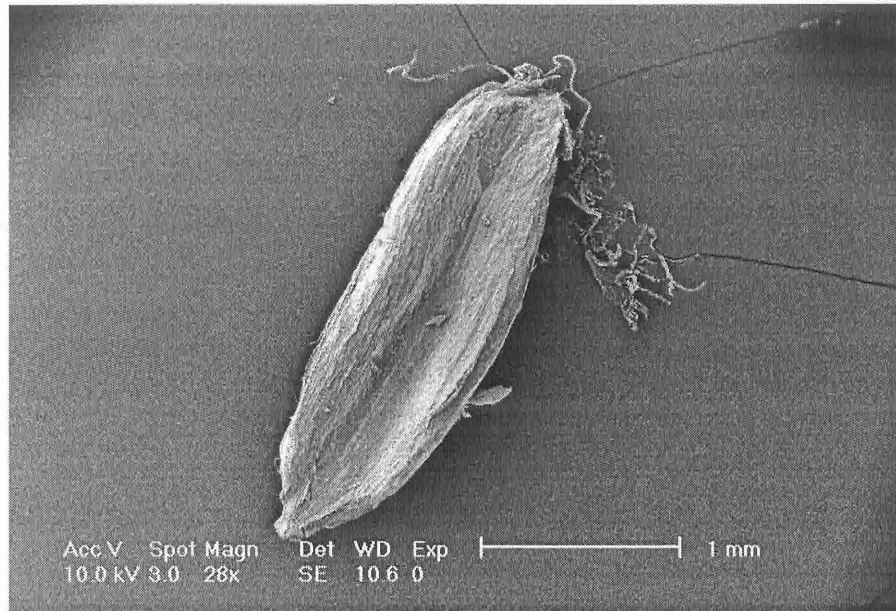
Notes **Modern**
Uncarbonized

Path file://C:/Documents and Settings/Administrator/Desktop/SEM Project 2005/Poaceae/
FESTUCA.TIF

filename **FESTUCA.TIF**

Specimen# **MCB58**

Image



Family **Poaceae**

Genus **Festuca**

Species **dolichophylla**

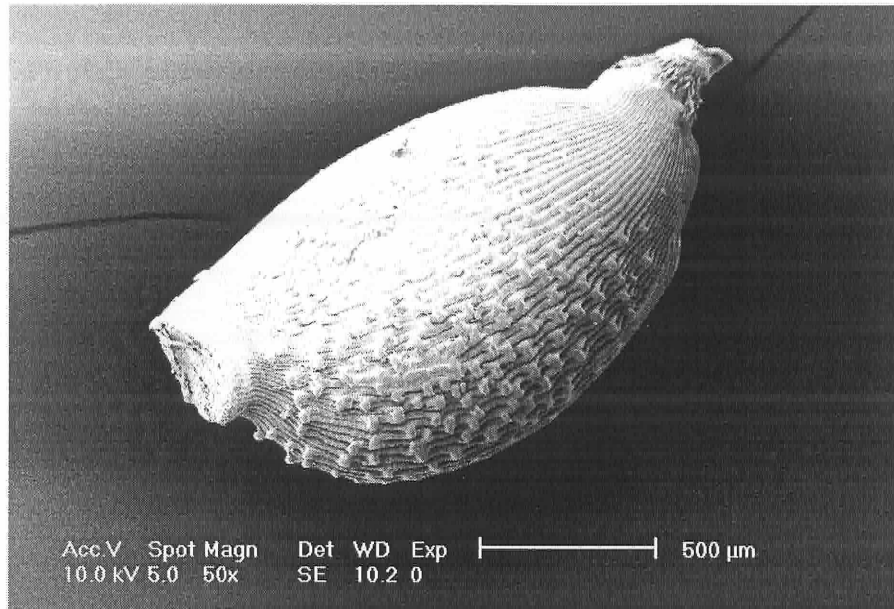
Notes **Modern**
Uncarbonized

Path **file://C:/Documents and Settings/Administrator/Desktop/SEM Project 2005/Poaceae/
FESTUCA1.TIF**

filename **FESTUCA1.TIF**

Specimen# **MCB31**

Image



Family **Poaceae**

Genus **Piptochaetium**

Species **sp**

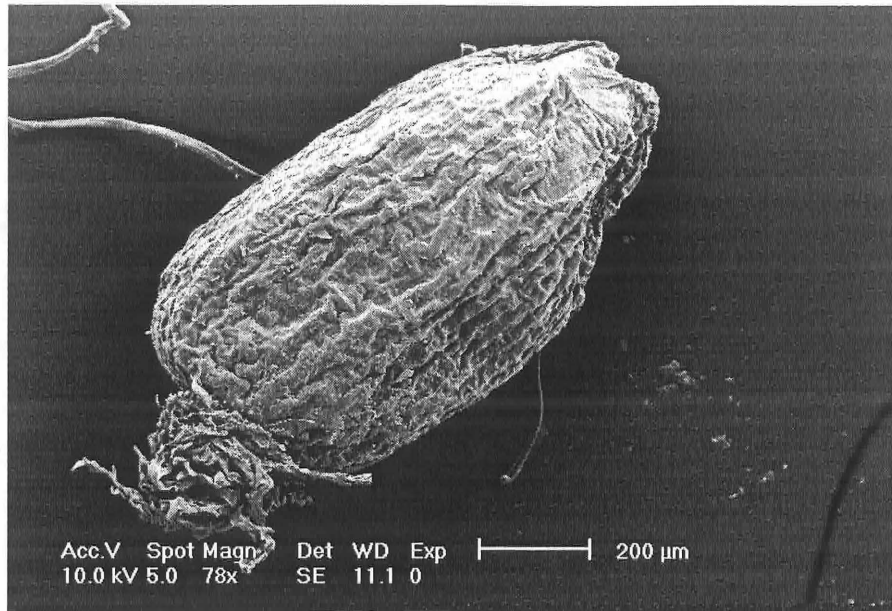
Notes **Modern**
Uncarbonized

Path **file://C:/Documents and Settings/Administrator/Desktop/SEM Project 2005/Poaceae/
POPIPTO.TIF**

filename **POPIPTO.TIF**

Specimen# **MCB76**

Image



Family **Poaceae**

Genus **Sporobolus**

Species **sindicus**

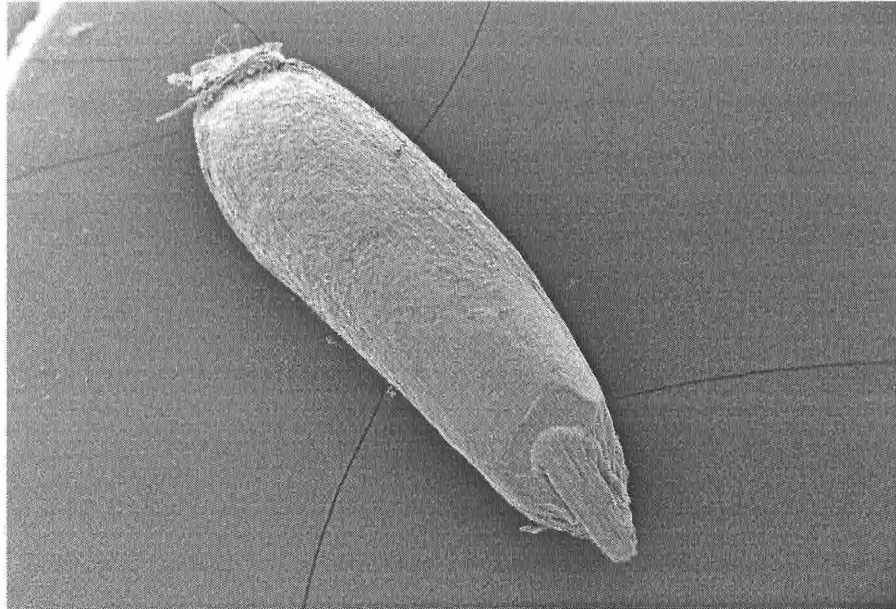
Notes **Modern**
Uncarbonized

Path **file://C:/Documents and Settings/Administrator/Desktop/SEM Project 2005/Poaceae/
POSPOR.TIF**

filename **POSPOR.TIF**

Specimen# **MCB217**

Image



Family **Poaceae**

Genus **Stipa**

Species **sp.**

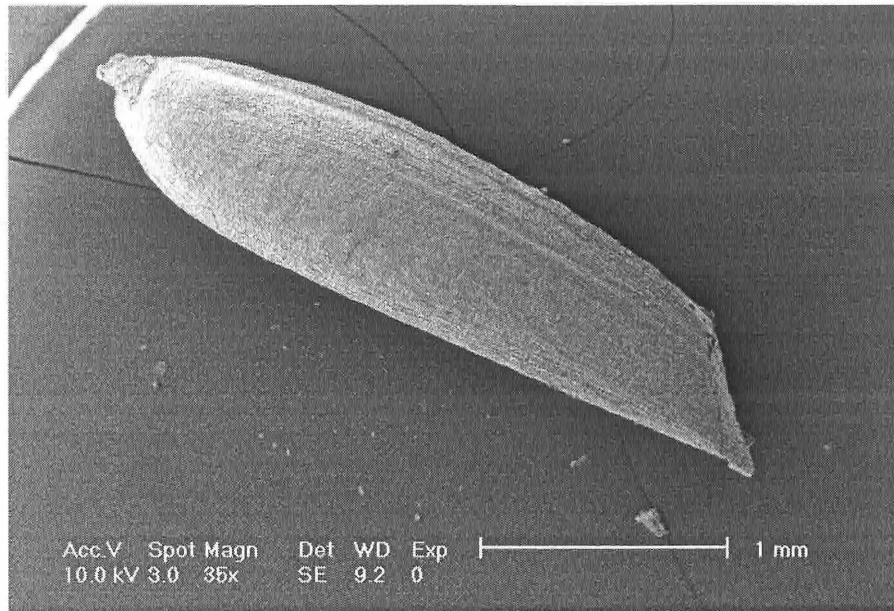
Notes **Modern
Uncarbonized**

Path **file://C:/Documents and Settings/Administrator/Desktop/SEM Project 2005/Poaceae/
STIPA01.TIF**

filename **STIPA01.TIF**

Specimen# **MCB217**

Image



Family **Poaceae**

Genus **Stipa**

Species **sp.**

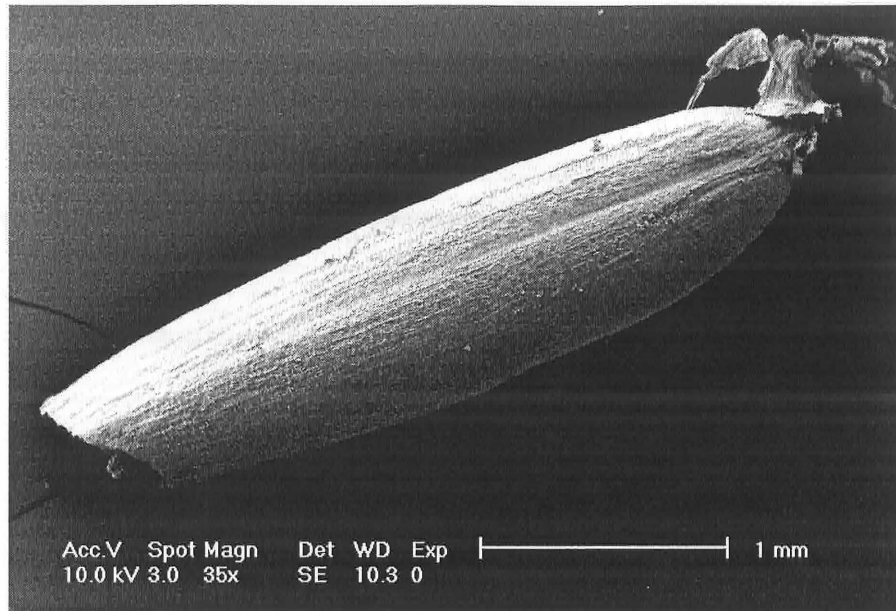
Notes **Modern
Uncarbonized**

Path **file://C:/Documents and Settings/Administrator/Desktop/SEM Project 2005/Poaceae/
STIPA03.TIF**

filename **STIPA03.TIF**

Specimen# **MCB217**

Image



Family **Poaceae**

Genus **Stipa**

Species **sp.**

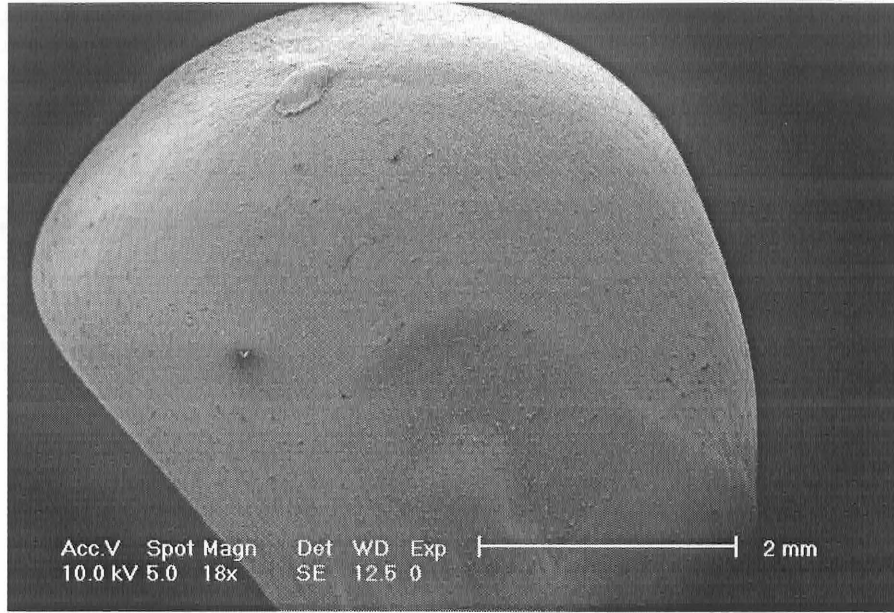
Notes **Modern**
Uncarbonized

Path **file://C:/Documents and Settings/Administrator/Desktop/SEM Project 2005/21April2005/
PSTIPA.TIF**

filename **PSTIPA.TIF**

Specimen# **CAH1989-15**

Image



Family **Poaceae**

Genus **Zea**

Species **mays**

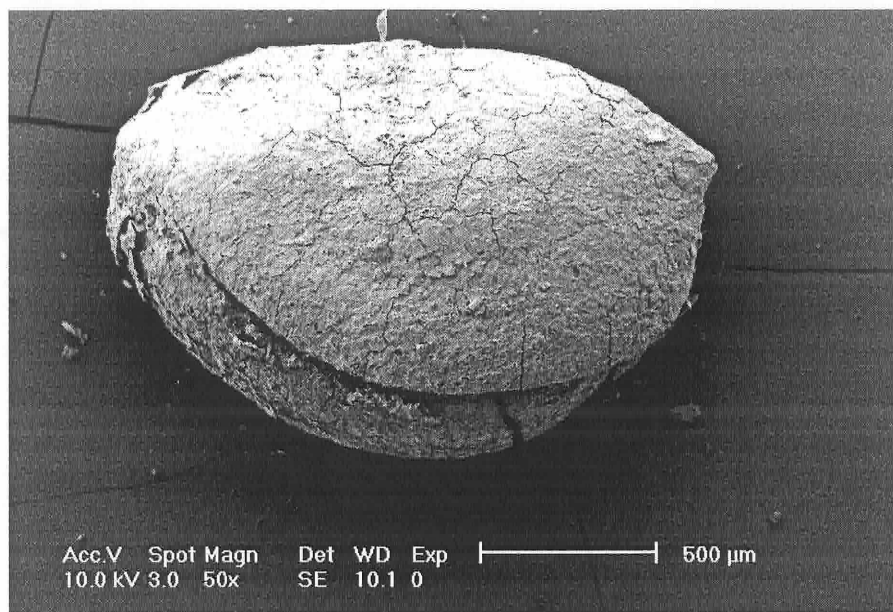
Notes

Path file://C:/Documents and Settings/Administrator/Desktop/SEM Project 2005/21April2005/
CORN01.TIF

filename **CORN01.TIF**

Specimen# **F132881**

Image



Family **Potamogetonaceae**

Genus **Potamogeton**

Species **sp.**

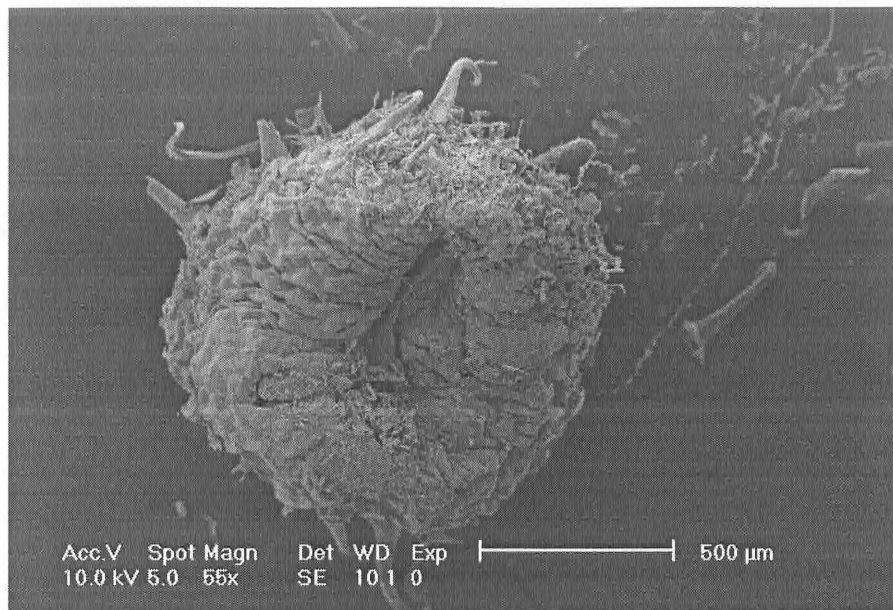
Notes **Archaeological
Carbonized**

Path file://C:/Documents and Settings/Administrator/Desktop/SEM Project 2005/21April2005/
POTAM.TIF

filename **POTAM.TIF**

Specimen# **CAH753**

Image



Family **Rubiaceae**

Genus **Galium**

Species **triflorum**

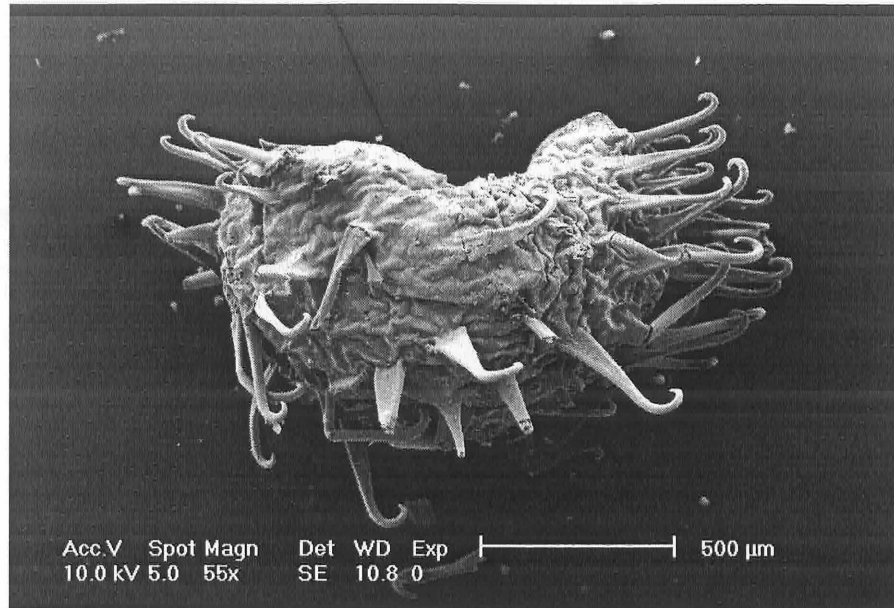
Notes **Modern**
Uncarbonized

Path **file://C:/Documents and Settings/Administrator/Desktop/SEM Project 2005/18April2005/
RUBIAGA1.TIF**

filename **RUBIAGA1.TIF**

Specimen# **CAH753**

Image



Family **Rubiaceae**

Genus **Galium**

Species **triflorum**

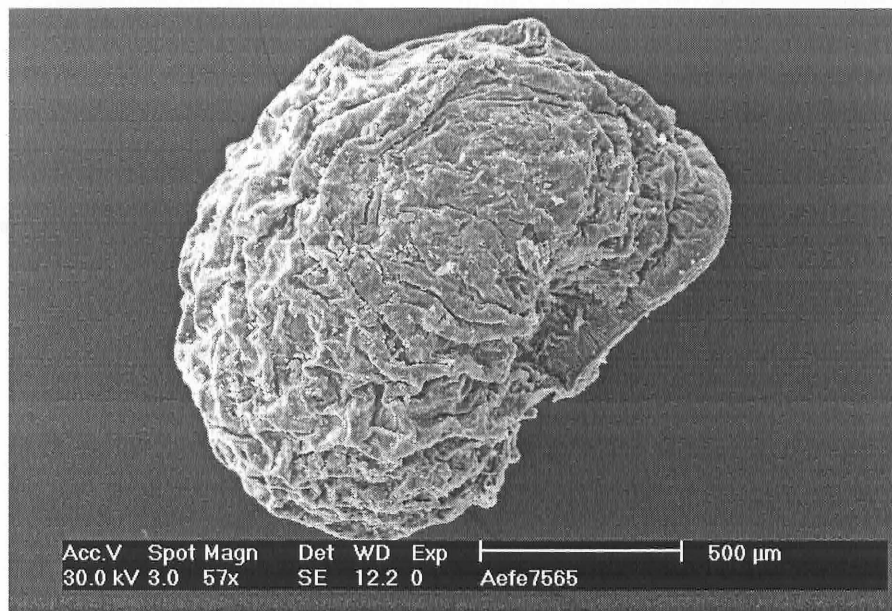
Notes **Modern**
Uncarbonized

Path **file://C:/Documents and Settings/Administrator/Desktop/SEM Project 2005/18April2005/
RUBIAGAL.TIF**

filename **RUBIAGAL.TIF**

Specimen# **CAH718**

Image



Family **Rubiaceae**

Genus **Relbunium**

Species **ciliatum**

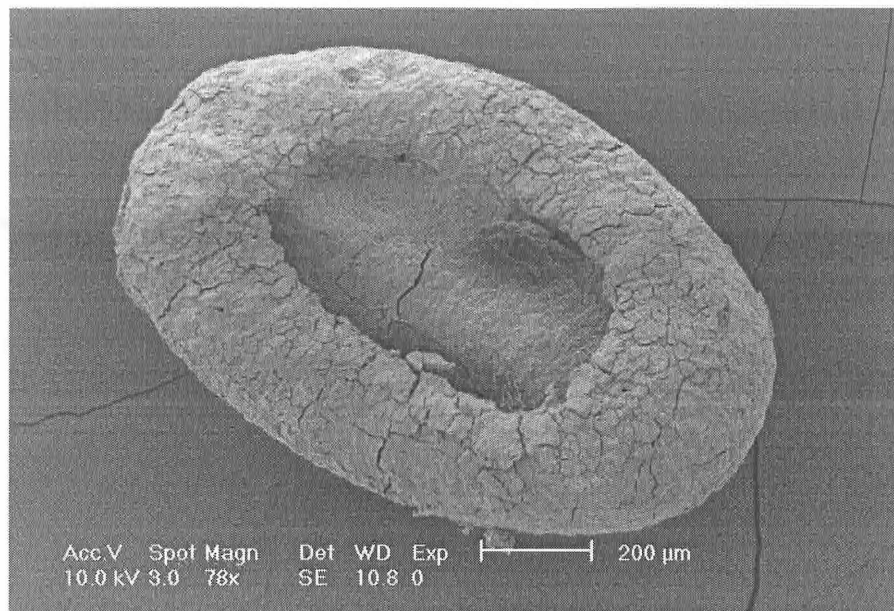
Notes **Modern**
Uncarbonized

Path file://C:/Documents and Settings/Administrator/Desktop/SEM Project 2005/Rubiaceae/
RELBUNIUM.TIF

filename **RELBUNIUM.TIF**

Specimen# **F132261**

Image



Family **Rubiaceae**

Genus **Relbunium**

Species **sp.**

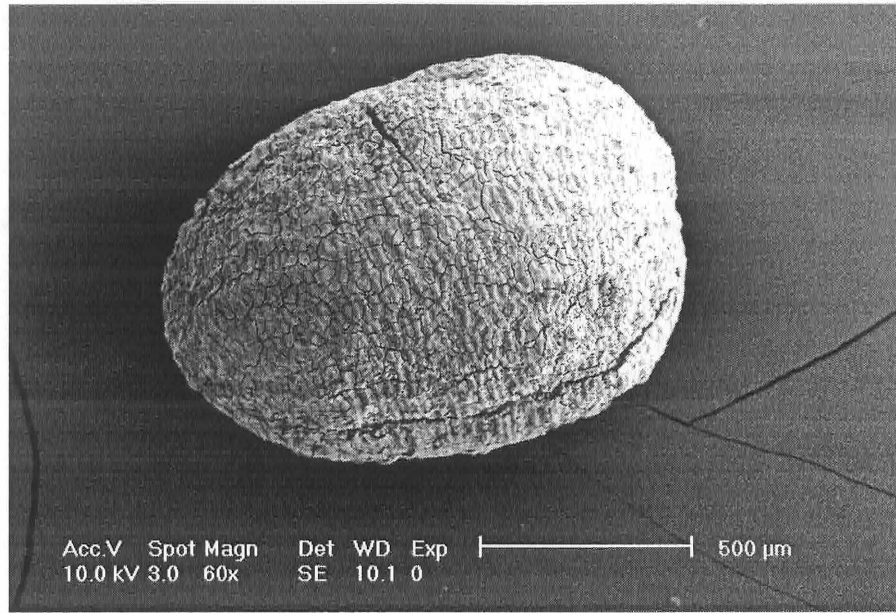
Notes **Archaeological
Carbonized**

Path **file://C:/Documents and Settings/Administrator/Desktop/SEM Project 2005/21April2005/
RELBU.TIF**

filename **RELBU.TIF**

Specimen# **F132261**

Image



Family **Rubiaceae**

Genus **Relbunium**

Species **sp.**

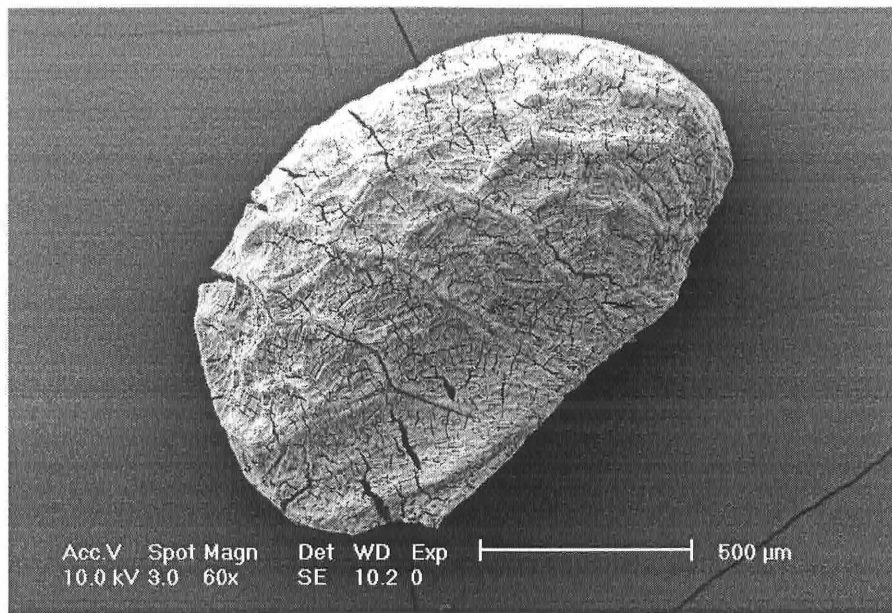
Notes **Archaeological
Carbonized**

Path file://C:/Documents and Settings/Administrator/Desktop/SEM Project 2005/21April2005/
RELBU01.TIF

filename **RELBU01.TIF**

Specimen# **F132262**

Image



Family **Rubiaceae**

Genus **Rubus**

Species **sp.**

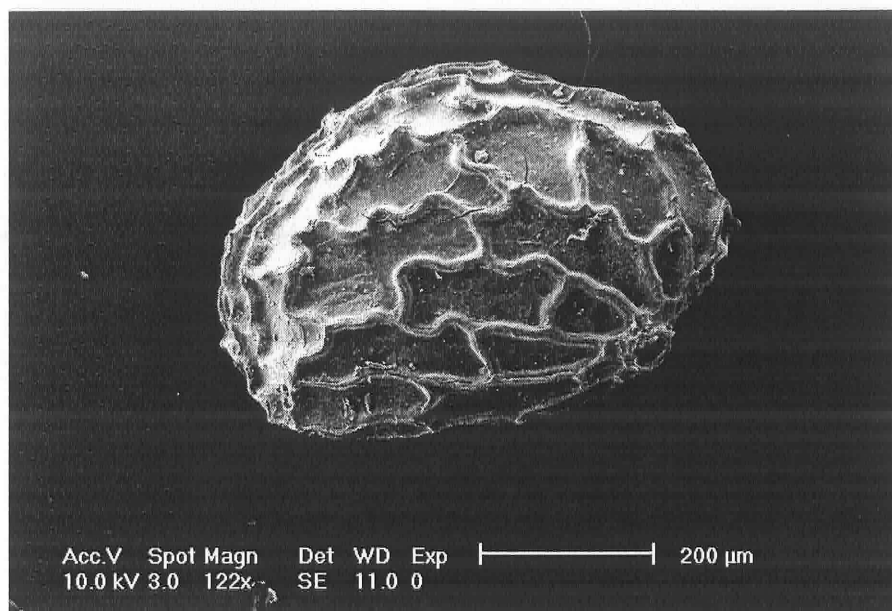
Notes **Archaeological
Carbonized**

Path file://C:/Documents and Settings/Administrator/Desktop/SEM Project 2005/21April2005/
RUBUS.TIF

filename **RUBUS.TIF**

Specimen# **CAH754**

Image



Family **Solanaceae**

Genus **Nicotiana**

Species **glauca**

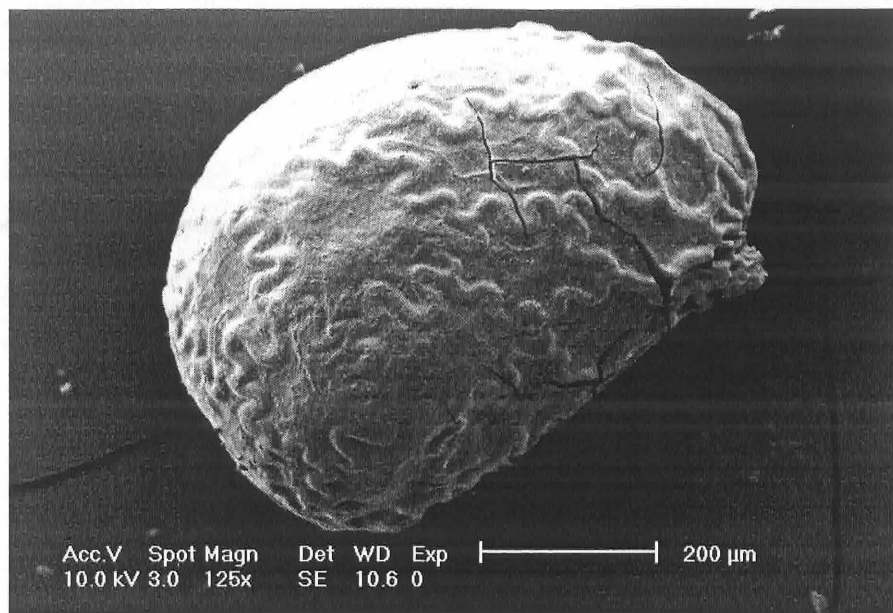
Notes **Modern**
Uncarbonized

Path **file://C:/Documents and Settings/Administrator/Desktop/SEM Project 2005/21April2005/
NICGLA.TIF**

filename **NICGLA.TIF**

Specimen# **F133391**

Image



Family **Solanaceae**

Genus **Nicotiana**

Species **sp.**

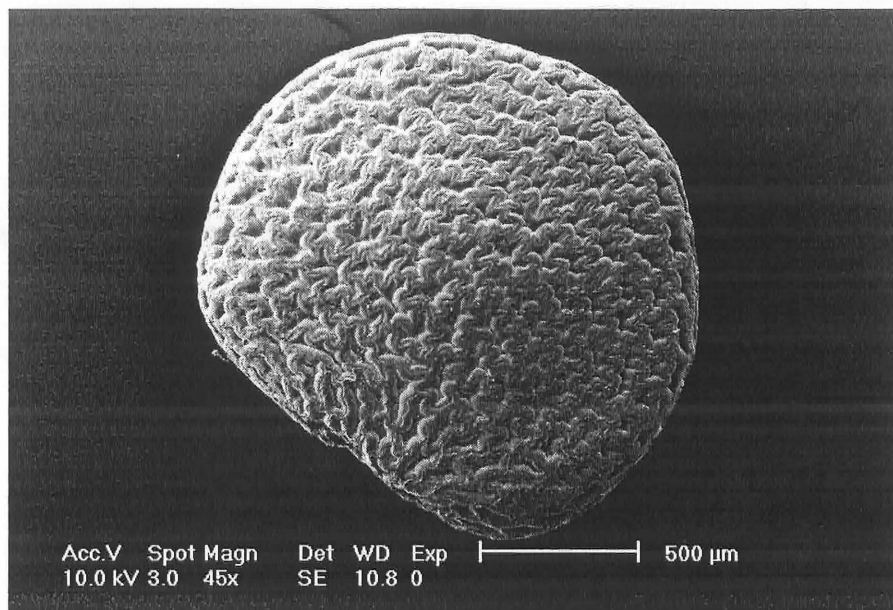
Notes **Archaeological
Carbonized**

Path file://C:/Documents and Settings/Administrator/Desktop/SEM Project 2005/21April2005/
NICOTL.TIF

filename **NICOTL.TIF**

Specimen# **CAH850**

Image



Family **Solanaceae**

Genus **Physalis**

Species **peruviana**

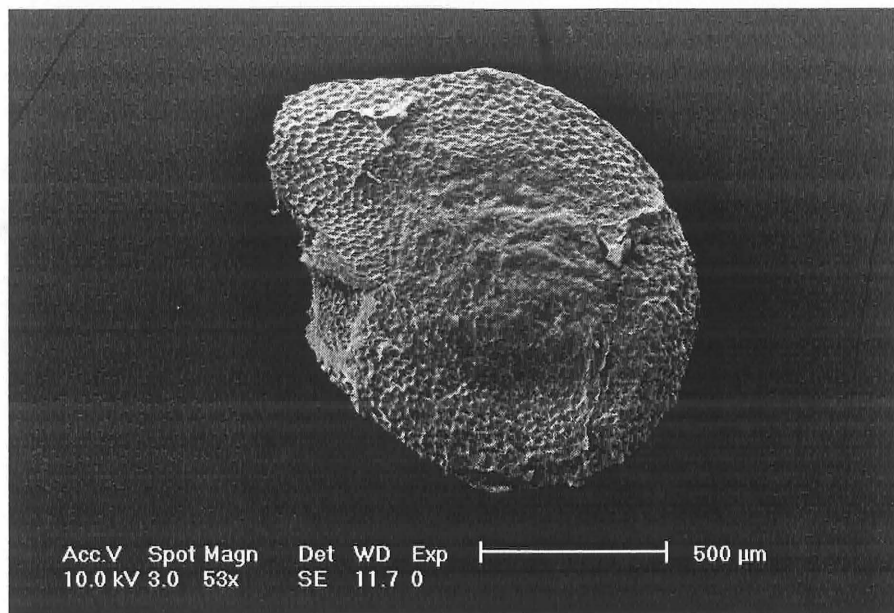
Notes **Modern**
Uncarbonized

Path file://C:/Documents and Settings/Administrator/Desktop/SEM Project 2005/21April2005/
SOLPHYS.TIF

filename **SOLPHYS.TIF**

Specimen# **CAH330**

Image



Family **Solanaceae**

Genus **Solanum**

Species **tuberosum**

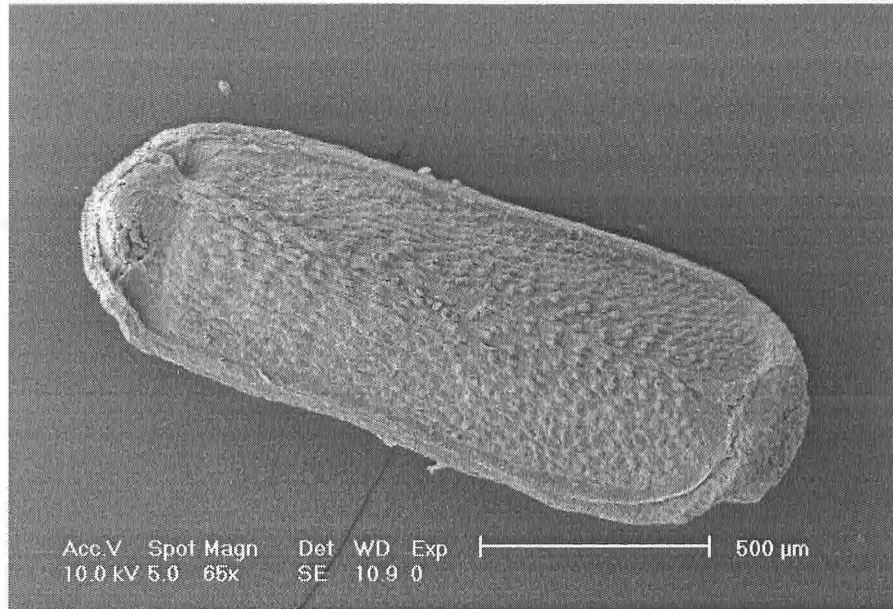
Notes **Modern**
Uncarbonized

Path file://C:/Documents and Settings/Administrator/Desktop/SEM Project 2005/21April2005/
SOLSOL.TIF

filename **SOLSOL.TIF**

Specimen# **CAH457**

Image



Family **Verbenaceae**

Genus **Verbena**

Species **sp.**

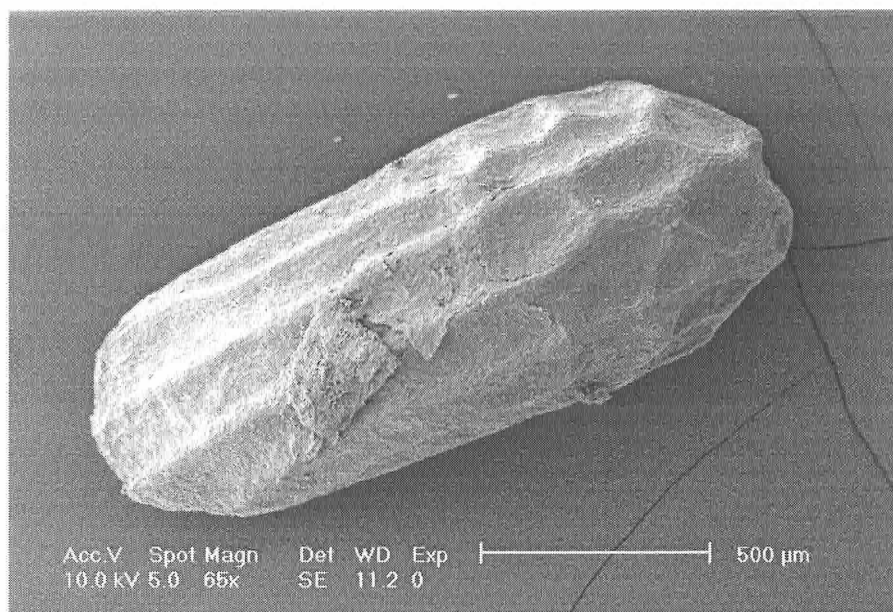
Notes **Modern
Uncarbonized**

Path **file://C:/Documents and Settings/Administrator/Desktop/SEM Project 2005/18April2005/
VERBENA.TIF**

filename **VERBENA.TIF**

Specimen# **CAH457**

Image



Family **Verbenaceae**

Genus **Verbena**

Species **sp.**

Notes **Modern
Uncarbonized**

Path **file://C:/Documents and Settings/Administrator/Desktop/SEM Project 2005/18April2005/
VERBENA1.TIF**

filename **VERBENA1.TIF**