

UC Davis

UC Davis Previously Published Works

Title

Changes in the Habitat Preference of Crested Ibis (*Nipponia nippon*) during a Period of Rapid Population Increase

Permalink

<https://escholarship.org/uc/item/8438z89j>

Journal

Animals, 11(9)

ISSN

2076-2615

Authors

Ma, Liming

Li, Xinhai

Zhai, Tianqing

et al.

Publication Date

2021

DOI

10.3390/ani11092626



Copyright Information

This work is made available under the terms of a Creative Commons Attribution License, available at <https://creativecommons.org/licenses/by/4.0/>

Peer reviewed

Article

Changes in the Habitat Preference of Crested Ibis (*Nipponia nippon*) during a Period of Rapid Population Increase

Liming Ma^{1,2}, Xinhai Li^{2,3,*}, Tianqing Zhai⁴, Yazu Zhang⁴, Kai Song², Marcel Holyoak⁵
and Yuehua Sun^{2,3,*}

¹ School of Life Sciences, Hebei University, 180 Wusi East Road, Baoding 050024, China; maliming717@163.com

² Key Laboratory of Animal Ecology and Conservation Biology, Institute of Zoology, Chinese Academy of Sciences, 1-5 Beichen West Road, Beijing 100101, China; songkai@ioz.ac.cn

³ University of Chinese Academy of Sciences, Yuquan Road, Beijing 100049, China

⁴ Shaanxi Hanzhong Crested Ibis National Nature Reserve, Hanzhong 723300, China; zhaitianqing@163.com (T.Z.); zx51w@126.com (Y.Z.)

⁵ Department of Environmental Science and Policy, University of California, 1 Shields Avenue, Davis, CA 95616, USA; maholyoak@ucdavis.edu

* Correspondence: lixh@ioz.ac.cn (X.L.); sunyh@ioz.ac.cn (Y.S.);

Tel.: +86-10-64807898 (X.L.); +86-10-64807132 (Y.S.)

Simple Summary: In 1981, the crested ibis (*Nipponia nippon*) was a critically endangered bird with only two pairs left in the world. Now, numbers have increased, and it has been reintroduced to many places in China, Japan, and Korea. In the breeding season, the crested ibis has high food needs (fish, freshwater invertebrate, etc.) to feed nestlings, and it prefers areas with rice paddies and waterbodies near to trees for nesting. We compared nest site preference from 1981 to 2019, and found that nest sites moved closer to houses of local farmers. In the 1980s, crested ibises only lived in remote mountain areas, where the farmers were too poor to afford pesticide and fertilizer, and consequently rice paddies contained substantial fish populations. In the meantime, the massive use of pesticides in more populated areas had caused the collapse of fish populations. A pesticide ban was enforced from 1981 on, when the crested ibis was rediscovered, and the freshwater biodiversity gradually recovered. The crested ibis returned to lower and more populated areas containing their ancestral habitats with large areas of wetlands.

Abstract: The number of breeding pairs of crested ibis (*Nipponia nippon*) in Hanzhong, China has recovered remarkably from 2 to 511 from 1981 to 2019. Although the crested ibis has been closely monitored, the habitat preference of the bird has not been well studied despite the extensive increase in abundance. We used nest site data from the past 39 years and 30 environmental variables to develop species distribution models for each year. We applied random forest to select important environmental variables, and used logistic regressions to quantify the changes in habitat preferences in 39 years, taking into account the effects of interaction and quadratic terms. We found that six variables had strong impacts on nest site selection. The interaction term of rice paddies and waterbodies, and the quadratic term of precipitation of the wettest quarter of the year were the most important correlates of nest presence. Human impact at nest sites changed from low to high as birds increased their use of ancestral habitats with abundant rice paddies. We concluded that during the population recovery, the crested ibises retained their dependence on wetlands, yet moved from remote areas to populated rural regions where food resources had recovered due to the ban of pesticide use.

Keywords: animal conservation; habitat preference; interaction effects; model selection; nest site; wetland



Citation: Ma, L.; Li, X.; Zhai, T.; Zhang, Y.; Song, K.; Holyoak, M.; Sun, Y. Changes in the Habitat Preference of Crested Ibis (*Nipponia nippon*) during a Period of Rapid Population Increase. *Animals* **2021**, *11*, 2626. <https://doi.org/10.3390/ani11092626>

Academic Editor: Dimitrios Bakaloudis

Received: 27 July 2021

Accepted: 6 September 2021

Published: 7 September 2021

Publisher's Note: MDPI stays neutral with regard to jurisdictional claims in published maps and institutional affiliations.



Copyright: © 2021 by the authors. Licensee MDPI, Basel, Switzerland. This article is an open access article distributed under the terms and conditions of the Creative Commons Attribution (CC BY) license (<https://creativecommons.org/licenses/by/4.0/>).

1. Introduction

Species can be described as occupying ecological niches [1] and having certain preferences for environmental conditions [2–4]. Species distribution models can quantify such preferences, and rank the importance of different environmental variables [5,6]. The habitat preferences of a species could change over time due to exogenous anthropogenic pressures (e.g., human disturbance) or environmental variation, or endogenous factors such as intraspecific competition. However, long-term studies are required to study such changes and these are extremely rare in the literature.

The crested ibis (*Nipponia nippon*) has experienced a dramatic increase in numbers [7,8]. Wild populations increased from two breeding pairs in the whole world in 1981 to 511 pairs in Hanzhong, central China in 2019. The habitat preferences of the crested ibis have been studied and key variables identified [8–16]. However, although the population density of the ibis has greatly changed, no study has compared the changes in habitat preference of the species. Doing so would help to inform the species' management.

The crested ibis has been closely monitored for 39 years since its rediscovery in 1981 [17]. Its population fluctuated at a very low level in the first 16 years, with less than seven pairs [18], and then increased exponentially. Meanwhile, the local economy has grown rapidly in the area of occurrence in China, and conservation policies have been effectively implemented [19]. Both the ibis population and its surrounding environment have changed in the past four decades. In this study, we assessed and compared the habitat preference of the ibis through the bird's recovery period. This enables us to make inferences about the reasons for population recovery.

2. Methods

2.1. Study Area

In 1981, the last two pairs of the crested ibis were found at Yang County, Hanzhong Prefecture, Shaanxi Province in central China [17]. Now, the crested ibis has expanded to neighboring counties in Hanzhong Basin [20], which is surrounded by the Qinling Mountains to the north and Daba Mountains to the south. The landscape comprises forested foothills and gently rolling croplands, mixed with rivers and ponds. Typical nesting habitat of the species consists of temperate forest mixed with rice paddies and other wetlands [17,21] (Figure 1).

2.2. Nest Site Data

The crested ibis was closely monitored since its rediscovery in 1981, and all nest sites were recorded and protected [19,22]. After 2006, the number of nests was over 100, and it was not easy to find all nests. Thereafter, local field investigators of the Shaanxi Hanzhong Crested Ibis National Nature Reserve conducted 3–4 line transect surveys every year to look for nests. They believe that all nests along the transect routes were located, since the nests of the crested ibis are large and visible, and the nesting areas are easily accessible, since the bird never lives far away from farmers [14]. We compiled the nest site data from 1981 to 2019. In 2020, the field surveys were suspended due to COVID-19 and no data were collected in that year.

2.3. Environmental Variables

We used 30 environmental variables to develop species distribution models for the crested ibis, including 19 climate variables [23], elevation [24], human footprint index [25] and land cover [26], as well as solar radiation, wind speed, and water vapor pressure for January and July, respectively [23] (Table 1).

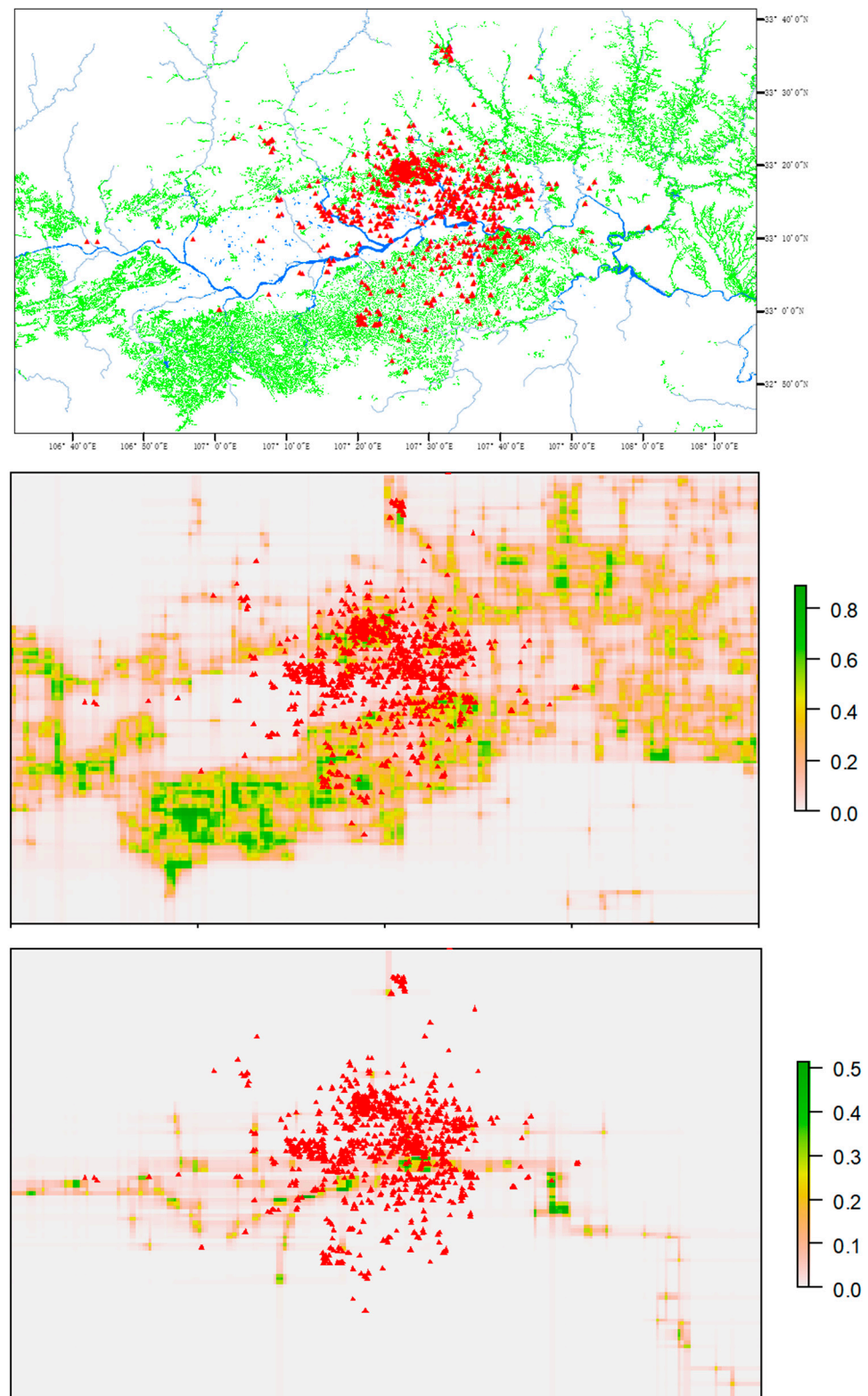


Figure 1. Distribution of nest sites (red triangles) of the crested ibis in 2019 in Hanzhong Basin, Shaanxi Province, China. The background is an elevation map. The bright green areas are rice paddies, and the blue areas are rivers, reservoirs, and lakes. The brown lines are roads. The dark brown area by the road is the human residence area of the city Hanzhong.

Among the 30 variables, rice paddies and water bodies represent habitats containing food resources for the bird and are the most important habitats for nest site selection [27].

We used fine scale maps (1:100,000) to locate rice paddies and waterbodies [28]. The original polygon data of rice paddies and waterbodies were transformed to raster layers. Because the crested ibis usually fly a few hundred to a few thousand meters from their nests to reach foraging sites, the distance from nest sites to the forage sites is expected to be an important factor. The presence/absence of wetland was not found to be a good indicator for nest site selection. We estimated the values of probability of presence of rice paddies and waterbodies from binary (0/1) values by predicting the presence of wetlands using random forest [29] with longitude and latitude as explanatory variables (Figure S1). All of the 30 variables were raster layers covering the study area (Figure 1) with the resolution of 1 km.

Table 1. Variable parameters and data sources used in the analysis of nest site selection of the crested ibis. The variable names used in the models are in parentheses.

Variables	Parameters				Unit	Citation
	Mean	Minimum	Maximum	SD		
Nineteen variables for temperature and precipitation (bio_1 to bio_19)	/	/	/	/	/	[23]
Elevation (elev)	1091.3	354	2572	472.7	M	[24]
Human footprint index (footprint)	11.38	4.00	43.12	5.63	/	[25]
Land cover (landcover)	/	/	/	/	/	[26]
Rice paddies (rice_paddy) ¹	0.107	0	0.888	0.156	square km	Predicted values
Waterbodies (waterbody) ¹	0.008	0	0.513	0.034	square km	Predicted values
Solar radiation in January (solar1)	8516	7733	9203	288.9	$\text{kJ m}^{-2} \text{day}^{-1}$	[23]
Solar radiation in July (solar7)	19,439.7	18,020	20,249	444.8	$\text{kJ m}^{-2} \text{day}^{-1}$	[23]
Wind speed in January (wind1)	1.718	1.1	2.9	0.283	m s^{-1}	[23]
Wind speed in July (wind7)	1.673	1.3	2.8	0.245	m s^{-1}	[23]
Water vapor pressure in January (vapor1)	0.432	0.25	0.57	0.072	kPa	[23]
Water vapor pressure in July (vapor7)	2.172	1.46	2.65	0.264	kPa	[23]

¹ Predicted values representing the probability of wetland presence based on land cover data [28].

The crested ibis always selects tall trees for nesting. Most nest trees are oak (*Cyclobalanopsis glauca*) and larch (*Larix gmelinii*). The 30 environmental variables represent the habitat characteristics at nest tree locations. Distance to rivers is not a key factor, nor the distance to rice paddies or lakes. Nest trees were generally located near a wetland, or a few kilometers away from any wetlands.

2.4. Selecting Important Variables

We used random forest [29] to select the key variables among the 30 environmental variables predicting nest presence/absence. The variables might have complex high order and/or interaction effects on nest site selection. Random forest is robust for highly dimensional data and complex nonlinear effects [30,31]. Two indices for variable importance were provided by the randomForest package [32] in the R language [33]. Gini importance was reported to suffer from the bias of the underlying Gini-gain splitting criterion, while the alternative permuted MSE (mean squared error) importance is generally accepted as a reliable measure of variable importance [34]. As such, we used increased MSE when a variable was removed from the model to weight the 30 environmental variables.

We used 900 evenly distributed points as pseudo-absence data, and the nest sites as presence data. We built a model for each year, so that we had 39 models for years from 1981 to 2019. The environmental variables were ranked in each model.

2.5. Checking Quadratic and Interaction Terms

After determining important variables for nest presence/absence, we checked the contribution of quadratic and interaction terms. A quadratic term implies an optimum value for the species, which usually fits environmental variables such as temperature, precipitation, and elevation [35]. Interaction terms are also common in species distribution models [27]. We applied logistic regressions to check the contribution of all two-way interaction terms between each pair of the important variables, and all quadratic terms. We demonstrated the effects of each variable using the partial plot function provided by the randomForest package to show whether the quadratic terms or high order terms should be considered.

2.6. Contribution of Variables and Terms

We applied dominance analysis to determine variable importance and the contribution of interaction and quadratic terms in logistics regressions [36]. McFadden R^2 values were calculated to quantify variables' contributions using the R package dominanceanalysis [37].

3. Results

From 1981 to 2019, the crested ibis population increased from two breeding pairs to 511 breeding pairs (Figure 2), expanding from Yang County to other neighboring counties in Hanzhong Basin (Figure 1).

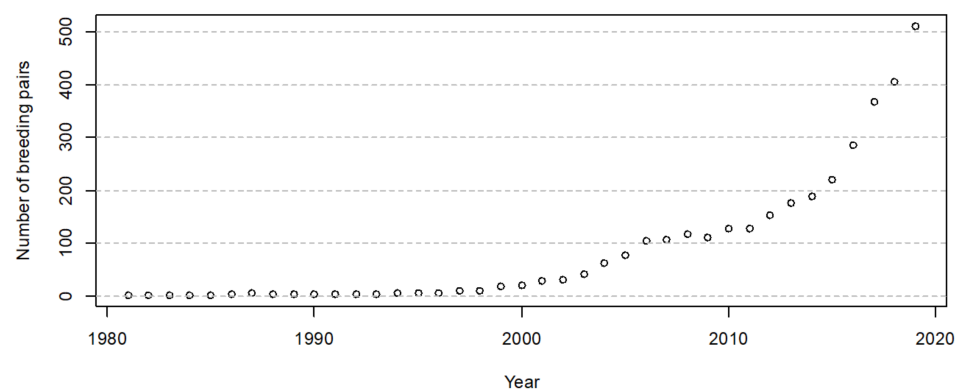


Figure 2. The number of breeding pairs of the crested ibis in Hanzhong Basin from 1981 to 2019.

We ranked the importance of the 30 environmental variables in nest site selection from 1981 to 2019, and found the top six variables were as follows: solar radiation in January, precipitation during the wettest quarter (WorldClim variable 16), precipitation during the warmest quarter (WorldClim variable 18), probability of waterbody presence, probability of rice paddy presence, and human footprint index (Figure 3). The values of the six variables at nest sites are quite different from those at 900 pseudo-absence sites (Figure S2).

The six important variables are independent, except that precipitation of wettest quarter and precipitation of warmest quarter are almost identical. We removed precipitation of warmest quarter, and the variance inflation factor (VIF) of the five remaining variables was below 10 (Table 2). VIF is a measure of variable independence in a dataset.

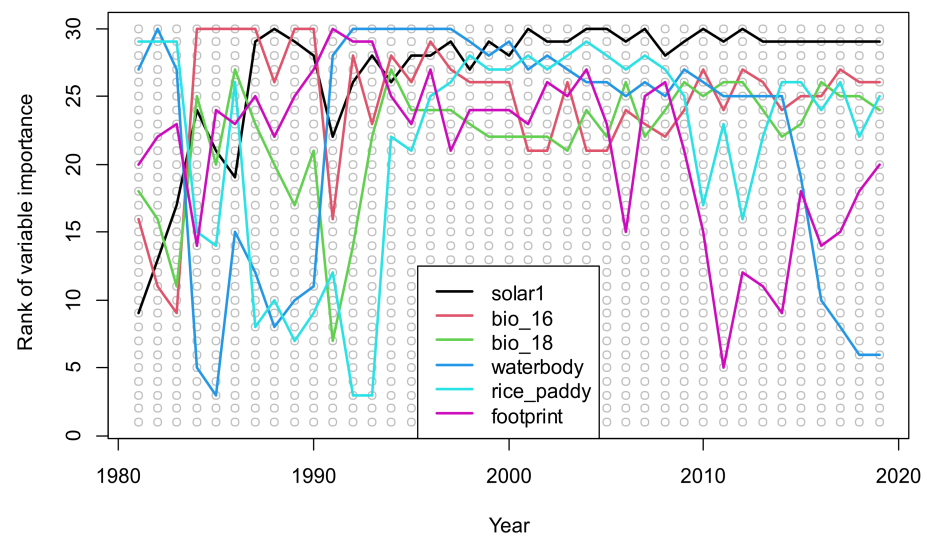


Figure 3. The ranks of top-ranked environmental variables for the nest site selection of the crested ibis from 1981 to 2019 using the index %IncMSE in random forest. Rank 30 is the highest rank. The top six variables were solar radiation in January, precipitation of the wettest quarter (WorldClim variable bio_16), precipitation of the warmest quarter (WorldClim variable bio_18), probability of waterbody presence, probability of rice paddy presence, and human footprint index.

Table 2. Variance inflation factors (VIFs) for the five variables that were important for nest site selection of the crested ibis from 1981 to 2019 after precipitation of the warmest quarter (bio_18) was removed from the model.

Bio_16	Solar1	Footprint	Rice_Paddy	Waterbody
5.846	6.023	2.861	1.349	2.610

We built logistics regressions to analyze nest site selection for each year from 1981 to 2019. The regression models included five linear terms, ten two-way interaction terms, and five quadratic terms of the five important variables. The average deviance of each variable and term across 39 logistic regressions for years from 1981 to 2019 are listed in Table 3. The interaction term of rice paddy and waterbody was the most important term, and the quadratic term of precipitation of wettest quarter ranked second.

The partial plots of the rice paddy (Figure S3), waterbody (Figure S4), and solar radiation (Figure S5) show monotonous positive effects, indicating that the crested ibis preferred areas with high density of rice paddies and waterbodies, and high solar radiation. The quadratic curves of the partial plots for precipitation during the wettest quarter (Figure S6) and precipitation during the warmest quarter indicate the bird needed an optimum value of the variables. The partial plots of human footprint index changed from 1981 to 2019 (Figure 4). In the early years before 2004, the crested ibis nested at remote areas with low human footprint index. From 2004 to 2009, the patterns were irregular. From 2010 to 2015, the bird preferred areas with higher human footprint index. From 2016 to 2019, the bird mostly nested in areas with an intermediate human footprint index (Figure 4).

Table 3. The average deviance of each variable and term in 39 logistic regressions for nest site selection of the crested ibis from 1981 to 2019. In the table, colon indicates an interaction term (R style).

Variable/Term	Deviance
rice_paddy:waterbody	79.74
I(bio_16 ²)	67.41
solar1:waterbody	55.05
bio_16:solar1	46.02
solar1	36.43
solar1:rice_paddy	34.20
rice_paddy	29.33
footprint:waterbody	29.24
solar1:footprint	24.82
footprint	24.20
waterbody	18.80
bio_16:waterbody	17.01
footprint:rice_paddy	15.31
bio_16:footprint	14.31
I(footprint ²)	12.20
I(solar1 ²)	9.26
I(waterbody ²)	9.05
bio_16	8.94
I(rice_paddy ²)	8.45
bio_16:rice_paddy	3.04

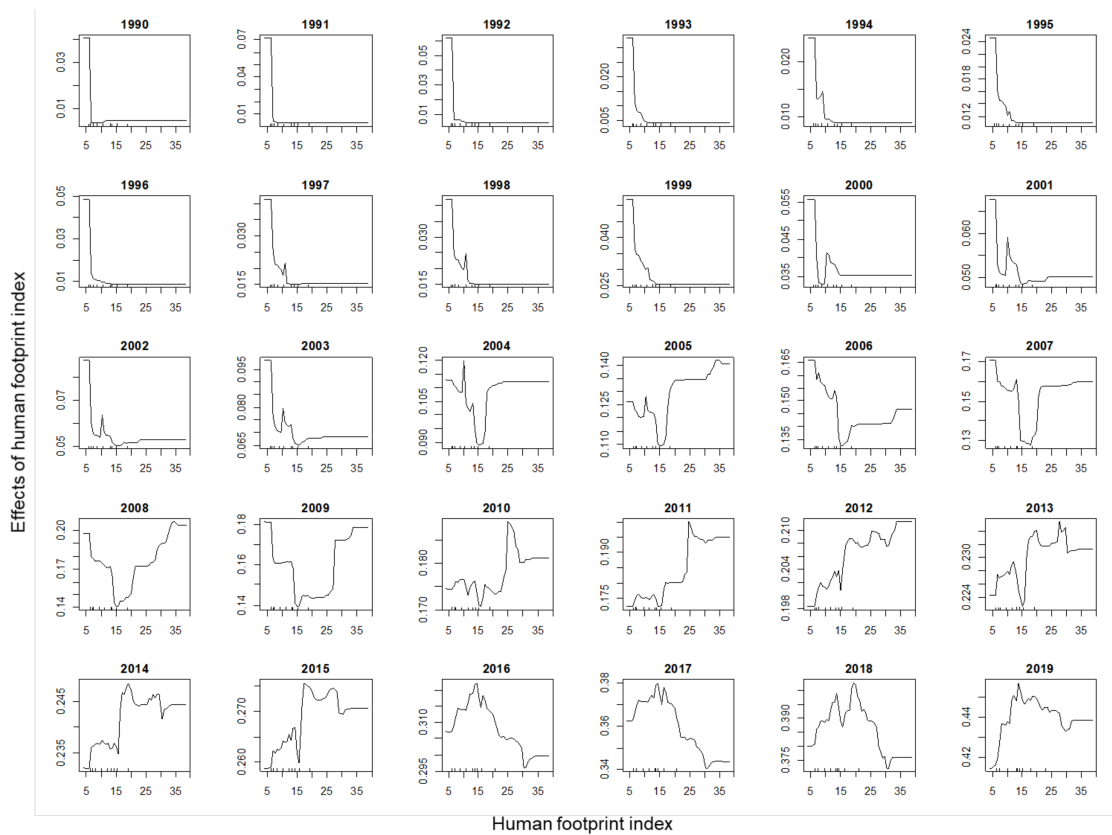


Figure 4. The partial plots showing the effects of human footprint index on nest site selection of the crested ibis from 1990 to 2019 based on random forest.

We fitted a single model to represent the probability of nest presence for all years from 1981 to 2019. This model allowed us to quantify the contribution of variables and

terms across years. Rice paddy, waterbody, and solar radiation had consistent monotonous positive effects on nest site selection, so that their linear terms were used in the model. The interaction term of probability of presence of rice paddy and waterbody and the quadratic term of precipitation during the wettest quarter were the two top-ranked terms (Table 3), and they were added into the model. The effect of human footprint index was complex (Figure 4) and it was added to the model as a linear term. The model was

$$\text{logit}(p) \sim \text{rice_paddy} + \text{waterbody} + \text{solar1} + \text{rice_paddy}:\text{waterbody} + \text{bio_16}^2 + \text{footprint}.$$

We applied dominant analysis to quantify the contribution (R^2) of each term in this model (Figure 5). The interaction term of probability of rice paddy presence and probability of waterbody presence had the highest contribution, especially in the period from 1990 to 2010.

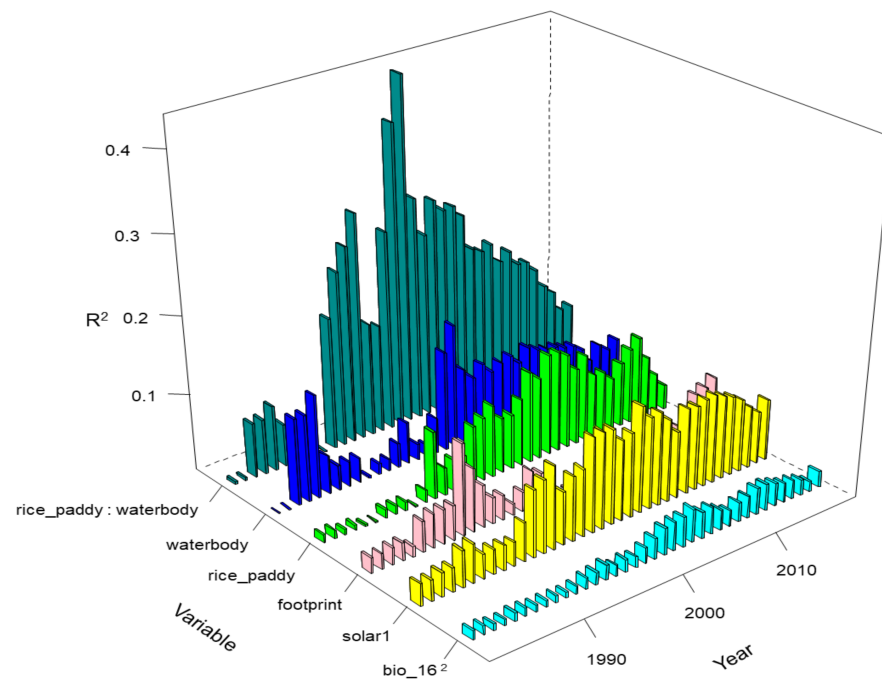


Figure 5. The R^2 values of the most important variables and terms for the nest site selection of the crested ibis from 1981 to 2019.

4. Discussion

The wild population of crested ibis increased from two breeding pairs to 511 pairs in the Hanzhong Basin from 1981 to 2019, and the species' habitat preferences changed during this period. In the past four decades, the distribution center of the crested ibis moved from remote mountains to lower and more populated areas with large areas of wetlands [18]. Our analyses show that the bird lived far away from human residences before 2004 and moved towards areas with increased human footprint from 2004 to 2015, and has stayed at areas with an intermediate human activity level since 2016 (Figure 4). This represents a shift towards nesting in the trees around farm residences. Such changes were not due to adaptation, but because habitat conditions have improved [9,14,15,38]. A ban on pesticide use and poaching control starting from 1981 gradually improved the habitat quality so that the crested ibis returned to their ancestral (pre-1980s) breeding sites in lower altitude areas [9,14,20].

Habitat selection is a complicated behavior and is usually associated with many factors [39,40]. In this study, we compiled 30 environmental variables (Table 1). Traditional logistic regression cannot handle as many as 30 variables because multicollinearity would be severe. Random forest is an ideal algorithm for dealing with such highly dimensional data [30]. However, random forest has a complex structure and is not a transparent model. After selecting important variables using random forest, we applied logistic regressions

to quantify the contribution of linear, quadratic, and interaction terms to explaining nest presence/absence. The interaction and quadratic terms ranked higher than the linear terms for nest site selection of the crested ibis (Table 3).

In this study, the most important term is the interaction of the probabilities of presence of rice paddies and waterbodies, which is consistent with the study using watersheds (not occurrences) as observations (rows in the dataset) [27]. The interaction means the bird needs both wetland types, which cannot be compensated for by each other. If rice paddies can be replaced by waterbodies, the sum of the two variables, not the product, would be important. The crested ibis needs rice paddies and waterbodies at different periods, and both of them must be above certain minimum areas (Figure S2). The importance of rice paddies and waterbodies indicates that food resources are key and limited factors for habitat selection by the crested ibis, with climate conditions and human impacts ranking lower in importance (Table 3 and Figure 5).

The quadratic term of precipitation during the wettest quarter (WorldClim variable bio_16) ranked second (Table 3), implying that the crested ibis needs a certain value of precipitation around 400 mm in the three summer months in the wettest quarter (Figure S6). Higher or lower precipitation made the nesting habitat less suitable.

In the past century, the crested ibis population declined severely in East Asia [14,41]. In the meantime, a related species, the black-headed ibis (*Threskiornis melanocephalus*), and sympatric little egrets (*Egretta garzetta*) remained stable [42,43]. The black-headed ibis also occurs in East Asia. It builds nests on the ground, and its breeding areas in Northeast China are remote and flat marshes with a low human activity level. The crested ibis needs tall trees for nesting. Wetlands mixed with forests are suitable for humans, and all original habitats of the crested ibis had been developed for agriculture [14,44]. The crested ibis has adapted to farmer-dominated wetlands, and has lived with farmers for hundreds of years. Unfortunately, the chemical revolution in agriculture resulted in the population collapse of the crested ibis [14]. The little egret also experienced the massive use of pesticide. However, unlike the crested ibis, it does not depend on rice paddies. The little egret feeds extensively on fishes in rivers, aided by sharp eyesight and a straight sharp bill. The crested ibis, with its down-curved bill, feeds by probing the bottom of rice paddies and detects the movement of fishes. Such a forage strategy makes the crested ibis depends on soft-bottom wetlands such as rice paddies, which were contaminated by pesticides. Fish populations in rivers were less influenced by pesticides, so that little egret populations remained stable.

Among the recovered species of the world, a few species were as closely monitored with detailed demographic data as the crested ibis, such as the Mauritius kestrel [45], the black-footed ferret [46], wolves on the Scandinavian peninsula [47], Hawaiian green sea turtles [48], the California condor [49], a re-introduced population of wild dogs [50], and Virunga mountain gorillas [51]. Yet, the use of spatially explicit population information for recovering species is rare [52]. Using accurate nest location data over the past 39 years, we were able to analyze the dynamics of habitat preference (Figures 4 and S3–S6), showing the changes in the contribution of key factors (Figure 5) for nest site selection of the crested ibis.

Small populations usually suffer from the bottleneck effect and inbreeding depression [53,54]. The crested ibis, recovered from two pairs, experienced extremely high inbreeding, and resulted in very low genetic diversity [55]. In fact, most individuals are offspring of a single pair of “super” parents that nested in Sanchahe from 1984 at elevation 1200 m. So far, the phenotype, including traits such as color, size, shape, and behavior, is normal. The crested ibis even reached 7000 individuals in 2021, but might still be susceptible to infectious diseases that could cause the population to collapse.

5. Conclusions

Habitat selection of animals is a complex process involving many environmental factors. We used a long-term nest site dataset of an endangered bird, compared 30 environmental variables and filtered unimportant factors, quantified interaction and quadratic terms, and found meaningful effects of some variables. We concluded that the crested ibis'

preference for rice paddies and waterbodies, together with high solar radiation, remained the same from 1981 to 2019. The preference for certain precipitation levels remained constant, yet its preference for human impact changed substantially, because the habitat value of rice paddies was recovered due to a pesticide ban in 1981. This likely caused an increase in the food resources in rice paddies.

Supplementary Materials: The following are available online at <https://www.mdpi.com/article/10.3390/ani11092626/s1>, Figure S1: The original rice paddies (green areas) and waterbodies (blue areas) in the upper panel, the predicted rice paddy index in the middle panel, and the predicted waterbody index in the lower panel. The rice paddy waterbody indices are predicted values of probability of presence of the wetland by random forest using longitude and latitude as explanatory variables. The red triangles are nest sites in 2019, Figure S2: The values of the five important variables and wetland index (the product of rice paddy and waterbody) for nest site selection of the crested ibis at nests (circles) from 1981 to 2019, and the mean value of the variables at 900 pseudo-absence sites (horizontal lines), Figure S3: The effect of rice paddy on the nest site selection of the crested ibis from 2000 to 2019, Figure S4: The effect of waterbody on the nest site selection of the crested ibis from 2000 to 2019, Figure S5: The effect of solar radiation in January on the nest site selection of the crested ibis from 2000 to 2019, Figure S6: The effect of precipitation of wettest quarter on the nest site selection of the crested ibis from 2000 to 2019.

Author Contributions: Conceptualization, X.L. and Y.S.; methodology, X.L.; validation, Y.Z. and T.Z.; formal analysis, X.L.; investigation, L.M. and T.Z.; resources, Y.Z.; data curation, X.L.; writing—original draft preparation, X.L., T.Z., K.S. and M.H.; writing—review and editing, L.M., Y.Z. and Y.S.; supervision, Y.S.; project administration, X.L.; funding acquisition, X.L. All authors have read and agreed to the published version of the manuscript.

Funding: This research was funded by the National Natural Science Foundation of China (No. 31970432 and 31772479), the Second National Wildlife Survey Project for Terrestrial Animals, the Second Tibetan Plateau Scientific Expedition and Research Program (STEP, Grant No. 2019QZKK0501), and the National Key Programme of Research and Development, Ministry of Science and Technology (2016YFC0503200).

Data Availability Statement: These data are available upon request from the corresponding author.

Conflicts of Interest: The authors declare no conflict of interest.

References

1. Hutchinson, G.E. Concluding Remarks. *Cold Spring Harb. Symp. Quant. Biol.* **1957**, *22*, 415–427. [[CrossRef](#)]
2. Fuller, R.M.; Devereux, B.J.; Gillings, S.; Amable, G.S.; Hill, R.A. Indices of bird-habitat preference from field surveys of birds and remote sensing of land cover: A study of south-eastern England with wider implications for conservation and biodiversity assessment. *Glob. Ecol. Biogeogr.* **2005**, *14*, 223–239. [[CrossRef](#)]
3. Ashcroft, M.B.; French, K.O.; Chisholm, L.A. An evaluation of environmental factors affecting species distributions. *Ecol. Model.* **2011**, *222*, 524–531. [[CrossRef](#)]
4. Hirzel, A.H.; Le Lay, G. Habitat suitability modelling and niche theory. *J. Appl. Ecol.* **2008**, *45*, 1372–1381. [[CrossRef](#)]
5. Guisan, A.; Thuiller, W. Predicting species distribution: Offering more than simple habitat models. *Ecol. Lett.* **2005**, *8*, 993–1009. [[CrossRef](#)]
6. Guisan, A.; Zimmermann, N.E. Predictive habitat distribution models in ecology. *Ecol. Model.* **2000**, *135*, 147–186. [[CrossRef](#)]
7. Zhang, Y.; Wang, F.; Cui, Z.; Li, M.; Li, X.; Ye, X.; Yu, X. Can we reestablish a self-sustaining population? A case study on reintroduced Crested Ibis with population viability analysis. *Avian Res.* **2021**, *12*, 1–10. [[CrossRef](#)]
8. Wang, F.; Li, M.; Zhang, Y.-S.; Zhao, W.-A.; Liu, D.-N.; Zhang, Y.-Z.; Zhang, H.; Ye, X.-P.; Yu, X.-P. Post-release dispersal and breeding site suitability of reintroduced populations of the Crested Ibis in Shaanxi Province, China. *Restor. Ecol.* **2021**, e13383. [[CrossRef](#)]
9. Wang, M.; Ye, X.-P.; Li, Y.-f.; Huo, Z.-p.; Li, X.; Yu, X.-p. On the sustainability of a reintroduced crested ibis population in Qinling Mountains, Shaanxi, Central China. *Restor. Ecol.* **2017**, *25*, 261–268. [[CrossRef](#)]
10. Nagata, H.; Yamagishi, S. Which factors affect post-release settlement of Crested Ibis *Nipponia nippon* on Sado Island, Japan? *Ornithol. Sci.* **2016**, *15*, 181–189. [[CrossRef](#)]
11. Mochizuki, S.; Liu, D.; Sekijima, T.; Lu, J.; Wang, C.; Ozaki, K.; Nagata, H.; Murakami, T.; Ueno, Y.; Yamagishi, S. Detecting the nesting suitability of the re-introduced Crested Ibis *Nipponia nippon* for nature restoration program in Japan. *J. Nat. Conserv.* **2015**, *28*, 45–55. [[CrossRef](#)]

12. Sun, Y.; Skidmore, A.K.; Wang, T.; van Gils, H.A.M.J.; Wang, Q.; Qing, B.; Ding, C. Reduced dependence of crested ibis on winter-flooded rice fields: Implications for their conservation. *PLoS ONE* **2014**, *9*, e98690. [[CrossRef](#)]
13. Huo, Z.; Guo, J.; Li, X.; Yu, X. Post-fledging dispersal and habitat use of a reintroduced population of the Crested Ibis (*Nipponia nippon*). *Avian Res.* **2014**, *5*, 1–9. [[CrossRef](#)]
14. Li, X.H.; Tian, H.D.; Li, D.M. Why the crested ibis declined in the middle twentieth century. *Biodivers. Conserv.* **2009**, *18*, 2165–2172. [[CrossRef](#)]
15. Li, X.H.; Li, D.M.; Ma, Z.J.; Schneider, D.C. Nest site use by crested ibis: Dependence of a multifactor model on spatial scale. *Landsc. Ecol.* **2006**, *21*, 1207–1216. [[CrossRef](#)]
16. Li, X.H.; Li, D.M.; Li, Y.M.; Ma, Z.J.; Zhai, T.Q. Habitat evaluation for crested ibis: A GIS-based approach. *Ecol. Res.* **2002**, *17*, 565–573. [[CrossRef](#)]
17. Liu, Y.Z. Rediscovery of the crested ibis in Qinling Mountains. *Acta Zool. Sin.* **1981**, *27*, 273.
18. Wang, G.M.; Li, X.H. Population dynamics and recovery of endangered crested ibis (*Nipponia nippon*) in Central China. *Waterbirds* **2008**, *31*, 489–494. [[CrossRef](#)]
19. Wang, C.; Liu, D.-P.; Qing, B.-P.; Ding, H.-H.; Cut, Y.-Y.; Ye, Y.-X.; Lu, J.; Yan, L.; Ke, L.; Ding, C.-Q. The current population and distribution of wild crested ibis *nipponia nippon*. *Chin. J. Zool.* **2014**, *49*, 666–671.
20. Sun, Y.; Wang, T.; Skidmore, A.K.; Palmer, S.C.F.; Ye, X.; Ding, C.; Wang, Q. Predicting and understanding spatio-temporal dynamics of species recovery: Implications for *Asian crested ibis Nipponia nippon* conservation in China. *Divers. Distrib.* **2016**, *22*, 893–904. [[CrossRef](#)]
21. Li, X.H.; Li, D.M. Current state and the future of the *crested ibis (Nipponia nippon)*: A case study by population viability analysis. *Ecol. Res.* **1998**, *13*, 323–333. [[CrossRef](#)]
22. Zhai, T.Q.; Lu, B.Z. The distribution and abundance of the crested ibis in Yang County. *J. Hanzhong Norm. Coll.* **1991**, *1991*, 72–74.
23. Fick, S.E.; Hijmans, R.J. WorldClim 2: New 1 km spatial resolution climate surfaces for global land areas. *Int. J. Climatol.* **2017**, *37*, 4302–4315. [[CrossRef](#)]
24. Rabus, B.; Eineder, M.; Roth, A.; Bamler, R. The shuttle radar topography mission—a new class of digital elevation models acquired by spaceborne radar. *Isprs J. Photogramm. Remote Sens.* **2003**, *57*, 241–262. [[CrossRef](#)]
25. Sanderson, E.W.; Jaiteh, M.; Levy, M.A.; Redford, K.H.; Wannebo, A.V.; Woolmer, G. The Human Footprint and the Last of the Wild. *Bioscience* **2002**, *52*, 891–904. [[CrossRef](#)]
26. Loveland, T.R.; Reed, B.C.; Brown, J.F.; Ohlen, D.O.; Zhu, J.; Yang, L.; Merchant, J.W. Development of a global land cover characteristics database and IGBP DISCover from 1-km AVHRR data. *Int. J. Remote Sens.* **2000**, *21*, 1303–1330. [[CrossRef](#)]
27. Li, X.H.; Li, B.D.; Wang, G.M.; Zhan, X.J.; Holyoak, M. Deeply digging the interaction effect in multiple linear regressions using a fractional-power interaction term. *MethodsX* **2020**, *7*, 101067. [[CrossRef](#)]
28. Chinese Academy of Surveying and Mapping. *China 1:100000 Land Cover Data*; Chinese Academy of Surveying and Mapping: Beijing, China, 2018.
29. Breiman, L. Random forests. *Mach. Learn.* **2001**, *45*, 5–32. [[CrossRef](#)]
30. Breiman, L. Statistical modeling: The two cultures. *Stat. Sci.* **2001**, *16*, 199–215. [[CrossRef](#)]
31. Li, X.H. Random forest is a specific algorithm, not omnipotent for all datasets. *Chin. J. Appl. Entomol.* **2019**, *56*, 170–179. [[CrossRef](#)]
32. Liaw, M.A. *Package ‘Random Forest’*; University of California, Berkeley: Berkeley, CA, USA, 2018.
33. R Core Team. *R: A Language and Environment for Statistical Computing*; R Foundation for Statistical Computing: Vienna, Austria, 2021.
34. Loecherer, M. Unbiased variable importance for random forests. *Commun. Stat. -Theory Methods* **2020**, 1–13. [[CrossRef](#)]
35. Li, X.H.; Wang, Y. Applying various algorithms for species distribution modeling. *Integr. Zool.* **2013**, *8*, 124–135. [[CrossRef](#)] [[PubMed](#)]
36. Azen, R.; Traxel, N. Using dominance analysis to determine predictor importance in logistic regression. *J. Educ. Behav. Stat.* **2009**, *34*, 319–347. [[CrossRef](#)]
37. Navarrete, C.B.; Soares, F.C. *Dominanceanalysis: Dominance Analysis. R package version 2.0.0*; 2020.
38. Liu, D.; Zhang, G.; Wang, C.; Qing, B.; Lu, J. Breeding variation in a reintroduced crested ibis *nipponia nippon* population in Central China. *Pak. J. Zool.* **2020**, *52*, 1595–1598. [[CrossRef](#)]
39. Cody, M.L. Habitat selection in birds: The roles of vegetation structure, competitors, and productivity. *Bioscience* **1981**, *31*, 107–113. [[CrossRef](#)]
40. Pulliam, H.R.; Danielson, B.J. Sources, sinks, and habitat selection—a landscape perspective on population-dynamics. *Am. Nat.* **1991**, *137*, S50–S66. [[CrossRef](#)]
41. Sun, Y.; Wang, T.; Skidmore, A.K.; Wang, Q.; Ding, C. Decline of traditional rice farming constrains the recovery of the endangered *Asian crested ibis (Nipponia nippon)*. *Ambio* **2015**, *44*, 803–814. [[CrossRef](#)]
42. BirdLife International. *Egretta Garzetta. The IUCN Red List of Threatened Species 2015*, E.T62774969A67367671. 2015.
43. BirdLife International. *Threskiornis Melanocephalus. The IUCN Red List of Threatened Species 2016*, E.T22697516A93618317. 2016.
44. Shi, D.C.; Yu, X.P.; Fan, C.D.; Cao, Y.H. The description of the decline of the crested ibis. *J. Northwest Univ.* **1991**, *21*, 25–30.
45. Jones, C.G.; Heck, W.; Lewis, R.E.; Mungroo, Y.; Slade, G.; Cade, T. The restoration of the *Mauritius kestrel falco-punctatus* population. *Ibis* **1995**, *137*, S173–S180. [[CrossRef](#)]
46. Dobson, A.; Lyles, A. Ecology-Black-footed ferret recovery. *Science* **2000**, *288*, 985. [[CrossRef](#)] [[PubMed](#)]

47. Wabakken, P.; Sand, H.; Liberg, O.; Bjarvall, A. The recovery, distribution, and population dynamics of wolves on the Scandinavian peninsula, 1978–1998. *Can. J. Zool. -Rev. Can. De Zool.* **2001**, *79*, 710–725. [[CrossRef](#)]
48. Balazs, G.H.; Chaloupka, M. Thirty-year recovery trend in the once depleted Hawaiian green sea turtle stock. *Biol. Conserv.* **2004**, *117*, 491–498. [[CrossRef](#)]
49. Finkelstein, M.E.; Doak, D.F.; George, D.; Burnett, J.; Brandt, J.; Church, M.; Grantham, J.; Smith, D.R. Lead poisoning and the deceptive recovery of the critically endangered California condor. *Proc. Natl. Acad. Sci. USA* **2012**, *109*, 11449–11454. [[CrossRef](#)] [[PubMed](#)]
50. Somers, M.J.; Graf, J.A.; Szykman, M.; Slotow, R.; Gusset, M. Dynamics of a small re-introduced population of wild dogs over 25 years: Allee effects and the implications of sociality for endangered species' recovery. *Oecologia* **2008**, *158*, 239–247. [[CrossRef](#)]
51. Robbins, M.M.; Gray, M.; Fawcett, K.A.; Nutter, F.B.; Uwingeli, P.; Mburanumwe, I.; Kagoda, E.; Basabose, A.; Stoinski, T.S.; Cranfield, M.R.; et al. Extreme conservation leads to recovery of the virunga mountain gorillas. *PLoS ONE* **2011**, *6*, e19788. [[CrossRef](#)]
52. Rjf, A.; Scott, J.M. Examining differences between recovered and declining endangered species. *Conserv. Biol.* **2001**, *15*, 1274–1284.
53. Ewing, S.R.; Nager, R.G.; Nicoll, M.A.C.; Aumjaud, A.; Jones, C.G.; Keller, L.F. Inbreeding and loss of genetic variation in a reintroduced population of Mauritius Kestrel. *Conserv. Biol.* **2008**, *22*, 395–404. [[CrossRef](#)] [[PubMed](#)]
54. Frankham, R. Effective population-size adult-population size ratios in wildlife-a review. *Genet. Res.* **1995**, *66*, 95–107. [[CrossRef](#)]
55. Feng, S.; Fang, Q.; Barnett, R.; Li, C.; Han, S.; Kuhlwilm, M.; Zhou, L.; Pan, H.; Deng, Y.; Chen, G.; et al. The genomic footprints of the fall and recovery of the crested ibis. *Curr. Biol.* **2019**, *29*, 340–349. [[CrossRef](#)]