

UCLA

UCLA Previously Published Works

Title

Lung Cancer Care Before and After Medicare Eligibility

Permalink

<https://escholarship.org/uc/item/7sn2h850>

Journal

INQUIRY The Journal of Health Care Organization Provision and Financing, 53(1)

ISSN

0046-9580

Authors

Huesch, Marco D

Ong, Michael K

Publication Date

2016

DOI

10.1177/0046958016647301

Peer reviewed

Lung Cancer Care Before and After Medicare Eligibility

INQUIRY: The Journal of Health Care
Organization, Provision, and Financing
Volume 53: 1–11
© The Author(s) 2016
Reprints and permissions:
sagepub.com/journalsPermissions.nav
DOI: 10.1177/0046958016647301
inq.sagepub.com



Marco D. Huesch, MBBS, PhD¹ and Michael K. Ong, MD, PhD^{2,3}

Abstract

Uninsured and underinsured near-elderly may not have timely investigation, diagnosis, or care of cancer. Prior studies suggest Medicare eligibility confers significant and substantial reductions in mortality and increases in health service utilization. We compared 2245 patients diagnosed with lung cancer at ages 64.5 to 65 years and 2512 patients aged 65 to 65.5 years, with 2492 patients aged 65.5 to 66 years (controls) in 2000 to 2005. Compared with controls, patients diagnosed with lung cancer before Medicare eligibility had no statistically significant differences in cancer stage, time to treatment, type of treatment, and survival. Study power was sufficient to exclude mortality reductions and health service utilization changes of the magnitude found in prior work, suggesting that typically, appropriate lung cancer care may be sought and delivered regardless of insurance status.

Keywords

Medicare, cancer, care, access, coverage, insurance, near elderly, uninsured

Introduction

There is broad agreement that health insurance coverage is generally associated with better health outcomes and with receipt of appropriate care.^{1–3} Access to care and some outcomes were better with lower co-pays in the Health Insurance Experiment.⁴ Losing and continuing not to have health insurance has been associated with declines in overall health.^{5–8}

Yet there is less evidence for this in the near-elderly.^{9–11} If subsidizing and extending coverage to these patients yields better and more cost-effective outcomes, making such transfer payments may make good policy. While the Affordable Care Act is likely to cover many previously uninsured people with subsidized private coverage in state insurance exchanges,¹² some states may reject the Medicaid expansion options.¹³

Some have looked at differences in health before and after the age of 65 years. Before this age, there are many uninsured and underinsured.⁶ It is estimated that 13% of the near-elderly in the 55 to 64 years age group are uninsured.¹⁴ Additional large numbers of patients are underinsured patients with less generous (eg, high deductible individual policies) or less widely accepted means-tested public insurance such as Medicaid.¹⁵

After age 65 years, nearly all are eligible for universal insurance under Medicare. Improvement and increases in health,¹⁶ services use,¹⁷ self-reports of health,¹⁸ disease control,¹⁹ and survival after acute conditions have been reported.¹⁵

The magnitude of estimated improvements is strikingly large. Card et al¹⁵ found a 20% relative reduction in deaths for severely ill patients treated urgently immediately after the age of 65 years, compared with similar patients treated immediately before the age of 65 years, a mortality gap that persisted for at least 9 months after the index admission. Similarly, large relative increases of between 11% and 23% in nonurgent medical procedures were found in those above 65 years compared with those below 65 years.¹⁸

However, the complex methods used in some investigations have sparked debate about the true existence of beneficial effects^{16,20,21} and the interpretation of results.^{7,20,22}

Others have not found any relative slowing of health decline after 65 years among the previously uninsured,²⁰ nor any population mortality impact in the 10 years following Medicare enactment.²³ These discrepant findings may in part be due to different types of health conditions studied. Still others point to the risk that generous insurance may lead to

¹University of Southern California, Los Angeles, USA

²University of California, Los Angeles, USA

³Veterans Administration, Los Angeles, USA

Received 1 March 2016; revised March 30 2016; revised manuscript accepted 31 March 2016

Corresponding Author:

Marco D. Huesch, Leonard D. Schaeffer Center for Health Policy & Economics, University of Southern California, 635 Downey Way, Verna & Peter Dauterive Hall, Los Angeles, CA 90089-3333, USA.
Email: huesch@usc.edu



Creative Commons Non Commercial CC-BY-NC: This article is distributed under the terms of the Creative Commons

Attribution-NonCommercial 3.0 License (<http://www.creativecommons.org/licenses/by-nc/3.0/>) which permits non-commercial use, reproduction and distribution of the work without further permission provided the original work is attributed as specified on the SAGE and Open Access pages (<https://us.sagepub.com/en-us/nam/open-access-at-sage>).

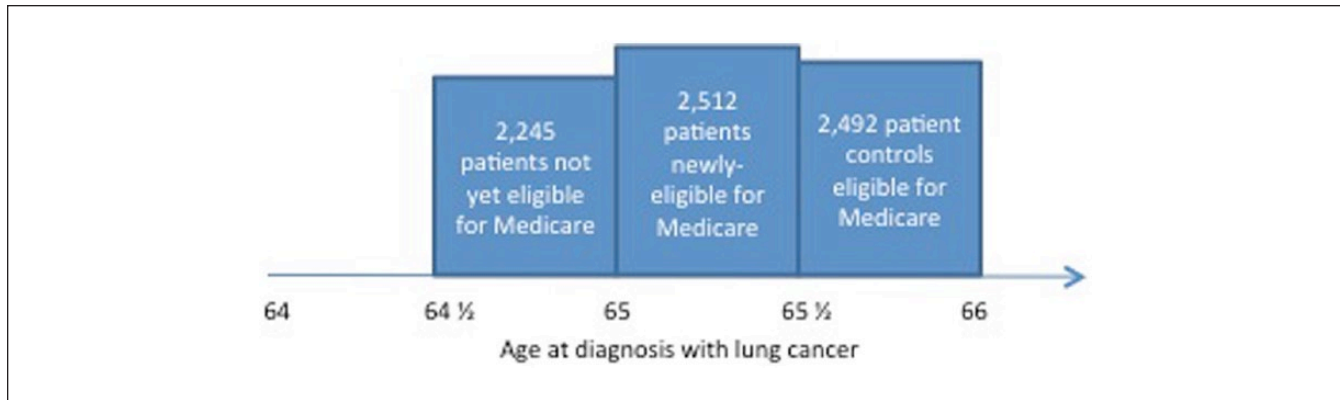


Figure 1. Cohorts and frequency of cases by cancer type, age, and eligibility.

patient moral hazard,²⁴ which could cause patient harms through overdiagnosis, overdiagnosis, or even overtreatment of disease.

It has been argued that Medicare's insurance effects could also lead to differences in outcomes and costs among cases of common, serious cancers diagnosed around the 65th year of age.²⁵ In this study, we examine lung cancer and seek to understand whether the magnitude of beneficial insurance effects is as high as suggested by the prior literature.^{15,18}

Our objective is to understand these potential associations and we examined staging, treatment and outcomes for patients diagnosed before and after Medicare eligibility among US patients.

Conceptual Framework

Lung cancer is typically a fast progressing cancer after diagnosis and leads to more deaths in the United States than any other type of cancer.²⁶ Among patients with a lethal cancer such as lung cancer, insurance status may be associated with outcomes and costs in 2 ways.

First, patients may receive a lung cancer diagnosis before they are eligible for Medicare. They may then face delays in receiving appropriate disease-specific and stage-specific care until they are eligible for Medicare. Such patients may then face significantly longer treatment delays, different treatment, or different outcomes than patients diagnosed considerably later, after Medicare eligibility.

Second, patients may face delays in investigation of the symptoms and signs of lung cancer before they are eligible for Medicare. They may then not have a diagnosis made until they are newly eligible for Medicare. These patients may then have significantly more advanced disease, different treatment, or different outcomes than patients diagnosed later after Medicare eligibility.

Data and Methods

We analyzed a national convenience sample, the Surveillance, Epidemiology, and End Results (SEER)

registry data maintained by the National Cancer Institute (NCI).²⁷ Due to differences in course of disease, we constructed different sized analytical cohorts for the 2 different cancers (Figure 2). The NCI administers 15 SEER registries, which cover approximately 26% of the national population.²⁸ We used the Patient Entitlement and Diagnosis Summary File (PEDSF) files, which link SEER registry data with Centers for Medicare & Medicaid Services' master enrollment file data.²⁹

The PEDSF file contains each patient's month and year of birth, date of death (if any), sex, marital status, race, ethnicity, state of residence, Census Bureau data on basic socioeconomic status at the census tract and zip code level, reason for Medicare entitlement, and Medicare Part A, B, or C enrollment. Diagnosis information contains site, grade, extent of disease, staging, and manner of confirmation. Treatment information is available for month and year of treatment with radiation, and for cancer-directed surgery.³⁰

We obtained all SEER-Medicare PEDSF files for lung cancer patient diagnoses made between 2000 through 2005. The linked Centers for Medicare and Medicaid Services (CMS) data in the PEDSF files allowed vital statistics follow-up through the end of 2007. We included SEER-Medicare patients with a diagnosis of lung or bronchus cancer (SEER 2-digit site recode 39). We excluded patients whose lung or bronchus cancer diagnosis was not the first in the SEER registries as patient characteristics and physician behavior may be systematically different in patients with a second occurrence of cancer. We excluded patients with missing or invalid data for diagnosis month and/or year and patients eligible for Medicare on the basis of disability or end-stage renal disease.

We used birth month and year and diagnosis month and year to create age-specific cohorts from the total of 7249 patients who met our inclusion criteria (Figure 1). We constructed a cohort of 2245 patients aged 64.5 to 65 years (which we refer to as "pre-eligible"), a cohort of 2512 patients aged 65 to 65.5 years ("newly eligible"), and a control cohort of 2492 patients aged 65.5 to 66 years ("control eligible") at time of diagnosis.

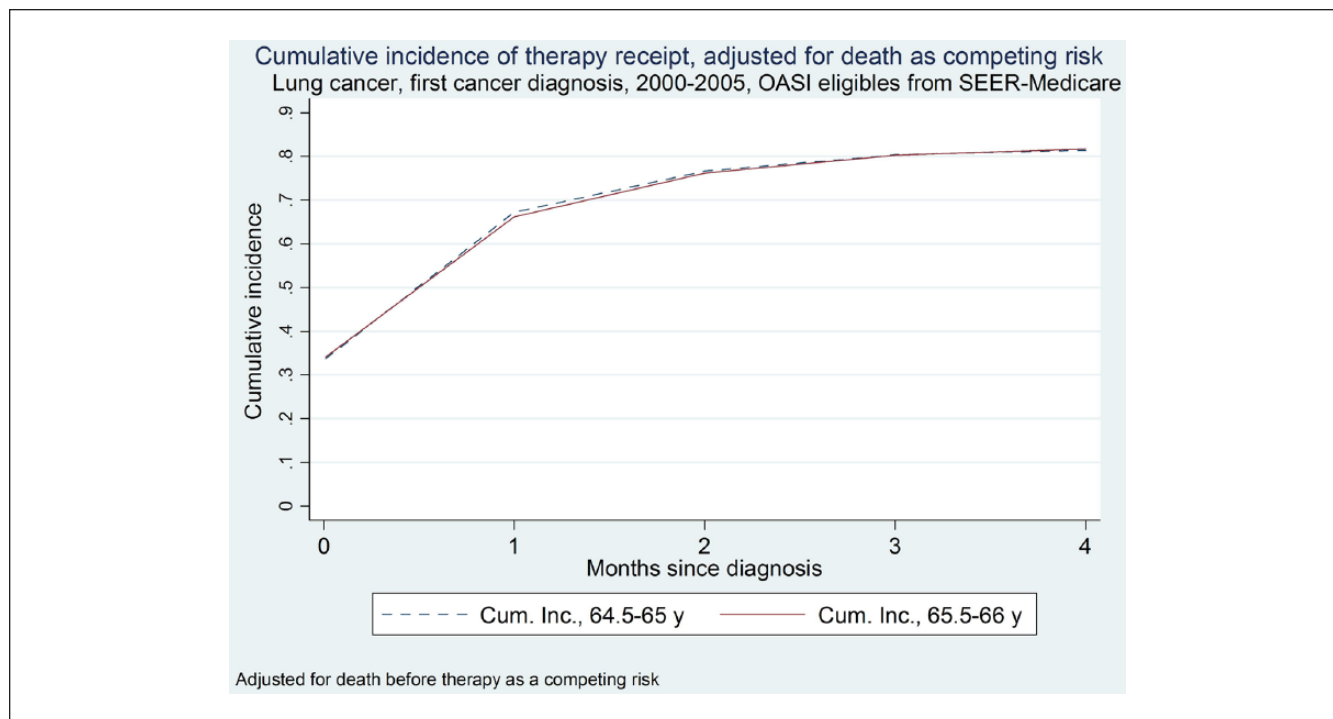


Figure 2. Cumulative incidence for therapy start, adjusted for death as competing risk, for pre-Medicare eligible (64.5-65 years old) and control cohorts (65.5-66 years old).

Note. SEER = Surveillance, Epidemiology, and End Results; OASI = Old Age Survivors Insurance.

For baseline cohort characteristics, we present frequencies for categorical variables and means with standard deviations for continuous variables. We tested the significance of changes in categorical (stage, diagnostic confirmation) and ordinal (tumor size) variables using chi-square tests. We used Kruskal-Wallis equality of populations tests for changes in continuous variables and median tests for equality of medians. For diagnostic categorical variables, we present frequencies in each cohort. We collapsed diagnoses of small cell lung cancer into 1 category. We also collapsed diagnoses of stage I and stage II non-small cell lung cancer into 1 category, and cases of stage III and stage IV non-small cell lung cancer into another category.

For outcome variables, we present frequencies and unadjusted risks in each cohort. We compared proportions surviving 0, 3, 6, 12, and 24 months and proportions receiving initial cancer-directed therapy within 0, 1, 2, 3, 4, 6, and 12 months of diagnosis using chi-square tests of crude risk ratios. Separately we compared the proportions of patients receiving radiation and/or surgery for patients in whom therapy was started within 4 months of diagnosis. We had data through December 31, 2007, or at least 24 full months following diagnosis, allowing event rates to be calculated for all patients.

Our data were interval censored at the month level. For outcome proportions and rates, we treated an outcome occurring in the same month as diagnosis as occurring at month 0, though this may have happened from 0 to 61 days after

diagnosis. We maintained the assumption that over any time period this bias was mean zero and not differential over the cohorts under comparison. In our 12- and 24-month outcomes data, the possible magnitude of this bias is small in relative terms.

In event history analyses, we plot crude rates of outcomes and rates adjusted for competing risks.^{31,32} We used Kaplan-Meier graphs to plot cumulative failure for the outcomes of receipt of radiation or cancer-directed surgery, and for the outcomes of death from all causes and death from lung cancer alone. Survival from all causes and treatment data was treated as censored after December 31, 2007. Survival from lung cancer alone was treated as censored after December 31, 2006, the latest death certificate follow-up in the SEER data. We used the log-rank test to compare failure distributions across cohorts in analyses not adjusting for competing risks.

Our Kaplan-Meier plots for survival, survival from lung cancer, and receipt of treatment assume that earlier death from other causes is not informative. This does not adequately adjust for competing risks.^{33,34} In lung cancer treatment, decisions and survival are unlikely to be conditionally independent, given patient characteristics. In the older cohorts, we need to take into account an increased risk of death from other causes. We used cumulative incidence graphs to analyze treatment receipt, adjusted for the competing risk of death from any cause. We also plotted the cumulative incidence for death from the primary cancer diagnosis,

Table 1. Lung Cancer Characteristics of Pre-Medicare Eligible, Newly Eligible, and Post-Medicare Eligible Cohorts.

	No. (%)			P value
	Pre-eligibility cohort	Newly eligible cohort	Eligible for Medicare cohort	
Age at diagnosis, y	64.5-65 (n = 2245)	65-65.5 (n = 2512)	65.5-66 (n = 2492)	
Age at diagnosis, mean (SD), y	64.8 (0.14)	65.3 (0.14)	65.8 (0.14)	<.001
Male	1203 (53.6)	1356 (54.0)	1364 (54.7)	.72
Caucasian	1825 (81.3)	2060 (82.0)	2016 (80.9)	.74
African American	201 (9.0)	231 (9.2)	217 (8.7)	
Asian American	108 (4.8)	99 (3.9)	122 (4.9)	
Hispanic	95 (4.2)	108 (4.3)	120 (4.8)	
Other or unknown	16 (0.7)	14 (0.6)	17 (0.7)	
Big metro	1322 (58.9)	1478 (58.8)	1492 (59.9)	.15
Never married	255 (11.4)	273 (10.9)	246 (9.9)	.45
Married	1327 (59.1)	1513 (60.2)	1493 (59.9)	
Separated	27 (1.2)	22 (0.9)	30 (1.2)	
Divorced	309 (13.8)	323 (12.9)	317 (12.7)	
Widowed	233 (10.4)	285 (11.3)	307 (12.3)	
Unknown marital status	94 (4.2)	96 (3.8)	99 (4.0)	
Census tract variables, medians				
Median income, \$	45 095	44 272	45 108	.15
4+ years college education, %	19.6	19.1	19.2	.85
<Poverty level, age and race specific, %	7.6	5.1	4.7	<.001

Note. Big metro = counties in metropolitan areas of 1 million or more population.

adjusted for the competing risk of death from any other known cause.

SEER*Medicare data³⁵ were managed using SAS software, version 9.2; all statistical computations and graphical output were performed using Stata/SE software, version 10.1. All analyses were 2-tailed. No adjustments for multiple comparisons were made.³⁶ We considered all *P* values less than .05 to be statistically significant. This study was approved by the institutional review board (IRB) of the study institution's Health System and declared exempt from IRB review under 45CFR46.101(b)(4).

Results

Baseline characteristics generally did not differ significantly across the pre-Medicare eligible, newly eligible, or eligible cohorts (Table 1). Gender, ethnicity and race, residence in metropolitan areas, and marital status were similar across cohorts. There was a small but significant difference in the extent of poverty in the patient residence census tracts across age cohorts ($P < .001$). This may represent artifactual variation or changes in residence after retirement.

Diagnostic characteristics were not significantly different in extent of disease, staging, and manner of diagnostic confirmation (Table 2). Across the pre-eligibility, newly eligible,

and eligible cohorts, there was no consistent or significant trend in staging.

The rate of lung cancer diagnosis based on death certificate only, without evidence of clinical, imaging, or pathological confirmation was constant and low across the cohorts. Among the pre-eligible cohort, 95.1% of patients had lung cancer confirmed on pathology. In newly eligible Medicare patients, this rate was 94.7%, and in patients already eligible for Medicare for at least 6 months, it was 94.9% ($P = .62$).

Treatment receipt exhibited no significant differences across cohorts in timing or type of treatment (Table 3). Of the pre-eligible cohort, 78.0% received therapy within 4 months as did 78.5% of the newly eligible, compared with 78.4% of the 65.5 to 66 years old cohort. Unadjusted risk ratios did not differ significantly from equality and were not significant when comparing pre-eligible and control cohorts, or when comparing newly eligible and control cohorts.

At this 4-month landmark, radiation and/or cancer-directed surgery receipt did not differ across the cohorts.

Treatment event history over time was not different with the hazard of receiving initial cancer-directed therapy identical across cohorts, ignoring the competing risk of death (unreported). Nearly 75% of registry patients had started a cancer-directed therapy within 2 months, with no difference between the pre-eligible and the control cohorts

Table 2. Lung Cancer, Extent of Disease, Staging, and Method of Diagnostic Confirmation.

	No. (%)			P value
	Pre-eligibility cohort	Newly eligible cohort	Eligible for Medicare cohort	
Age at diagnosis, y	64.5-65 (n = 2245)	65-65.5 (n = 2512)	65.5-66 (n = 2492)	
Extent of disease, 2000-2003				
Size of tumor, median, mm	40	40	39	.97
Tumor extent				
One lung	264 (17.1)	323 (19.0)	315 (18.5)	.37
Metastatic	571 (37.0)	629 (36.9)	633 (37.1)	1.00
Lymph node involvement				
None	436 (28.3)	484 (28.4)	491 (28.8)	.95
Mediastinal	498 (32.3)	549 (32.2)	555 (32.5)	.98
Contralateral or distant	169 (11.0)	181 (10.6)	166 (9.7)	.49
Staging, 2000-2003				
Small-cell, any stage	268 (17.4)	248 (14.6)	255 (14.9)	.33
Non-small cell, stage I/II	230 (14.9)	287 (16.9)	279 (16.3)	
Non-small cell, stage III/IV	814 (52.8)	909 (53.4)	913 (53.5)	
Unstaged	231 (15.0)	259 (15.2)	260 (15.2)	
Staging, 2004-2005				
Small-cell, any stage	107 (15.2)	105 (13.0)	109 (13.9)	.49
Non-small cell, stage I/II	140 (19.9)	180 (22.3)	185 (23.6)	
Non-small cell, stage III/IV	398 (56.7)	455 (56.2)	417 (53.1)	
Unstaged	57 (8.1)	69 (8.5)	74 (9.4)	
Staging, combining 2000-2005				
Small-cell, any stage	375 (16.7)	353 (14.1)	364 (14.6)	.11
Non-small cell, stage I/II	370 (16.5)	467 (18.6)	464 (18.6)	
Non-small cell, stage III/IV	1212 (54.0)	1364 (54.3)	1330 (53.4)	
Unstaged	288 (12.8)	328 (13.1)	334 (13.4)	
Diagnostic confirmation				
Histological	1735 (77.3)	1977 (78.7)	1945 (78.1)	.62
Cytological	399 (17.8)	402 (16.0)	418 (16.8)	
Imaging only	60 (2.7)	75 (3.0)	65 (2.6)	
Clinical only	11 (0.5)	13 (0.5)	21 (0.8)	
Death certificate only	35 (1.6)	39 (1.6)	38 (1.5)	

Note. Extent of disease based on the <e10sz1>, <e10ex1>, and <e10nd1> SEER data fields for cases in 2000 to 2003. Size excludes "diffuse." Extent and lymph node involvement: 3 most common values each, except "unknown." Staging of cases in 2000 to 2003 reflects SEER coding of AJCC (American Joint Committee on Cancer) stage field and in 2004 to 2005 reflects DAJCC (Derived AJCC) stage field. SEER = Surveillance, Epidemiology, and End Results.

($P = .79$). Similar nonsignificant estimates were found for the comparison between the newly eligible and the control cohorts.

In analyses that were robust to the competing risk of death, cumulative incidence for treatment receipt showed no essential differences for the comparison of pre-eligible and control cohorts (Figure 2) as well as for the comparison of newly eligible and control cohorts (unreported).

Turning to longer term survival (Table 3), point estimates of death rates were consistent with small secular increase over age across the cohorts. The pre-eligible cohort unadjusted rate of death was 36.4% within 6 months, compared with 36.7% for 65.5 to 66 years old control cohort (crude risk ratio 0.99; $P = .86$).

A total of 36.2% of newly Medicare-eligible patients with lung cancer died within 6 months of diagnosis, indistinguishable from the control cohort (crude risk ratio 0.99; $P = .72$). Survival event history showed no significant cohort differences (not reported). Kaplan-Meier complements for overall survival overestimate death due to lung cancer, since they do not differentiate between death due to lung cancer and death to other causes.

Cumulative incidence estimates that adjust for the competing risk of death from other causes (Figure 3) show the older control cohorts having statistically identical incidence of lung cancer specific deaths, but slightly higher incidence of other deaths as would be expected given the secular trend in mortality hazard.

Table 3. Lung Cancer, Time to Initial Therapy, Type of Therapy Received, and Deaths, Crude and Not Adjusted for Competing Risks.

Age at diagnosis, y	No. (%)			Crude risk ratio (95% confidence interval) of cohort vs 65.5-66 y cohort			
	Pre-eligibility cohort	Newly eligible cohort	Eligible for Medicare cohort	Pre-eligibility cohort	P value	Newly eligible cohort	P value
	64.5-65 (n = 2245)	65-65.5 (n = 2512)	65.5-66 (n = 2492)				
Initial therapy started, mo							
0	725 (32.3)	788 (31.4)	817 (32.8)	0.99 (0.91-1.07)	.72	0.96 (0.88-1.04)	.28
1	1447 (64.5)	1592 (63.4)	1582 (63.5)	1.02 (0.97-1.06)	.49	1.00 (0.96-1.04)	.94
2	1649 (73.5)	1854 (73.8)	1822 (73.1)	1.00 (0.97-1.04)	.79	1.01 (0.98-1.04)	.58
3	1729 (77.0)	1944 (77.4)	1918 (77.0)	1.00 (0.97-1.03)	.97	1.01 (0.98-1.04)	.72
4	1752 (78.0)	1973 (78.5)	1954 (78.4)	1.00 (0.97-1.03)	.76	1.00 (0.97-1.03)	.91
6	1772 (78.9)	1990 (79.2)	1976 (79.3)	1.00 (0.97-1.03)	.76	1.00 (0.97-1.03)	.95
12	1788 (79.6)	2006 (79.9)	1987 (79.7)	1.00 (0.97-1.03)	.94	1.00 (0.97-1.03)	.91
Initial therapy received, ≤ 4 mo							
Radiation	976 (55.7)	1075 (54.5)	1029 (52.7)	1.06 (1.00-1.12)	.06	1.03 (0.98-1.10)	.25
Cancer-directed surgery	594 (33.9)	736 (37.3)	706 (36.1)	0.94 (0.86-1.02)	.16	1.03 (0.95-1.12)	.45
Both	169 (9.6)	197 (10.0)	166 (8.5)	1.14 (0.93-1.39)	.22	1.18 (0.97-1.43)	.11
Neither	351 (20.0)	359 (18.2)	385 (19.7)	1.02 (0.89-1.16)	.80	0.92 (0.81-1.05)	.23
Death, mo							
0	116 (5.2)	134 (5.3)	129 (5.2)	1.00 (0.78-1.27)	.99	1.03 (0.81-1.30)	.80
3	531 (23.7)	608 (24.2)	653 (26.2)	0.90 (0.82-1.00)	.04	0.92 (0.84-1.02)	.10
6	818 (36.4)	909 (36.2)	914 (36.7)	0.99 (0.92-1.07)	.86	0.99 (0.92-1.06)	.72
12	1207 (53.8)	1360 (54.1)	1365 (54.8)	0.98 (0.93-1.03)	.49	0.99 (0.94-1.04)	.65
24	1565 (69.7)	1737 (69.1)	1725 (69.3)	1.01 (0.97-1.05)	.74	1.00 (0.96-1.04)	.93

Note. Events at 0 represent same month at diagnosis. Later events refer to events through end of the given month. "Neither" = initial therapy due to other (eg, chemotherapy).

We considered three potential threats to the robustness of our results. These hinged around (1) adequacy of the study's power, whether (2) inclusion in the study was biased by potential nonrandom missingness, and whether (3) the diagnostic threshold for lung cancer was constant. We report in the Appendix that our results appeared robust to these potential threats.

Conclusions

This study used cancer registry data to detail disease, treatment, and outcome differences among the near-elderly and elderly around the age of 65 years for a common and important cancer. Our approach was designed to identify harms from underinsurance and benefits from insurance due to better and more timely access to care. Nevertheless, our study failed to show substantial, consistent, or clinically meaningful differences between patients diagnosed before and immediately after eligibility for Medicare.

In this large, nation-wide study using recent lung cancer data, we found no clinically meaningful evidence that underinsurance or uninsurance harmed patients diagnosed with lung cancer before Medicare eligibility. We found minor but insignificant differences in lung cancer stage. However, in

time to treatment, in treatment type, in lung cancer-specific survival, and in all-cause survival, no significant differences were found across cohorts.

Our study was premised on discontinuous change in insurance status caused by exogenous aging into Medicare at age 65 years. Before this age, there are large numbers of uninsured patients^{6,37} with an estimated 13% of the near-elderly in the 55 to 64 years age group uninsured.¹⁴ Pre-Medicare eligibility, many other individuals are underinsured due to less generous (eg, high deductible individual policies) or less widely accepted insurance (eg, Medicaid).

Improved access to insurance has been found to be associated with better access to health care and improvement in health,^{16,17} with substantially improved survival after acute conditions,¹⁵ and with substantially increased utilization of care.^{16-18,38} Yet this adequately powered study was unable to detect differences in survival or utilization of the magnitude found by prior studies.

Our study has several important limitations that remain unresolved despite extensive robustness checks. Our study focuses narrowly on 1 type of cancer, albeit a common, well-known and important one. Our data are not necessarily representative of the entire US population. Currently, the SEER databases cover approximately 26% of the total US

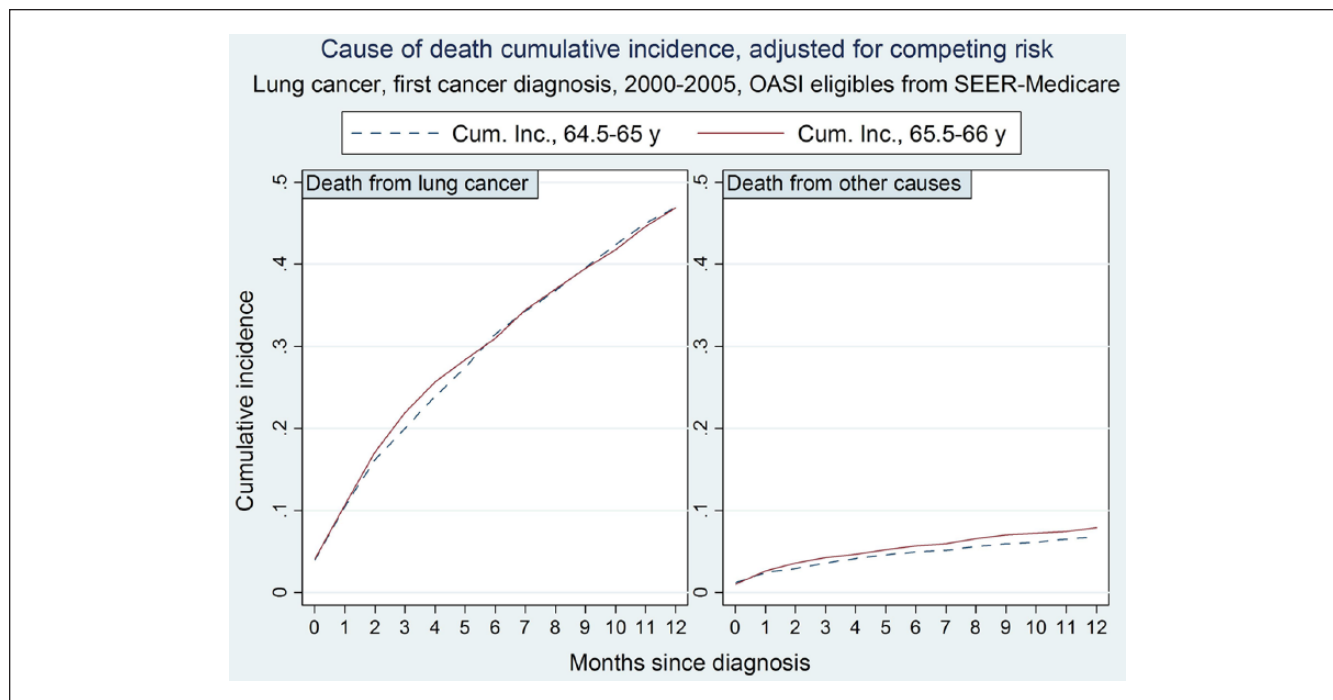


Figure 3. Cumulative incidence of death from lung cancer and death from other causes for pre-Medicare eligible (64.5-65 years old) and control cohorts (65.5-66 years old).

Note. SEER = Surveillance, Epidemiology, and End Results.

population in a nonrandom manner. For example, there is a large concentration of states in the West and Southwest (California, New Mexico, Arizona, and Utah) but far less or no representation in the rural Northeast and much of the large population centers in the Midwest apart from Iowa. Approximately 98% of cancer cases are ascertained in that population.³⁹ Whether missing data in the cohorts we examined are missing at random is unknown.

Related to this limitation is our inability to compare and contrast variations in small areas of the relationship of insurance coverage and treatment and outcomes. This is driven by the relatively low sample sizes at the individual state level, or the individual counties captured in some states. Our study's statistical power is inadequate for such comparisons, even though it is possible that there are differences in professionalism among providers and hospitals by geography, and potential differences in access to care without concern about coverage and reimbursement.

Other limitations are that we included patients from the 2000 calendar year, even though major registry expansion happened in 2000. We also pooled data across multiple calendar years, ignoring possible cohort effects. We did not ascertain the receipt of chemotherapy, which is separately coded in the Medicare claims for patients enrolled in fee-for-service Medicare.⁴⁰ Information on cancer-directed surgery was limited to the most extensive procedure among planned procedure(s) performed for the primary cancer or surgery performed within a year if cancer does not recur or progress.³⁰ We

do not observe whether treatment was curative, adjuvant, or palliative. If surgery to relieve metastatic disease differs systematically across cohorts, then we will miss such differences. We were also unable to quantify cohort treatment costs, which are important as cancer costs continue to rise.⁴¹

Other disease-specific limitations include the fact that this study took place in the period of time before the positive trial results on low-dose computed tomography (CT) screening for lung cancer.⁴² Our results might have been different in a later period in which screening was reduced. Our data also lack information on patient co-morbidities or preferences, which might drive differences in therapy afforded. However, rates of patients who did not undergo surgery that had been recommended did not differ significantly across the cohorts.

Our study fails to support concerns that patients diagnosed with lung cancer just before Medicare eligibility faced delays in receiving appropriate disease and stage-specific care until they are eligible for Medicare. These results are also not consistent with patients facing delays in investigation of the symptoms and signs of lung cancer before they are eligible for Medicare, with subsequently more advanced disease after Medicare eligibility.

There are a number of alternative explanations for our study's negative results. For example, differences in care may exist, but their effects may be too small to detect. Given the adequate power in this study, and the prior literature results suggesting substantial changes in general, this explanation may not be compelling.

Another alternative explanation is that most patients with lung cancer present with a poor prognosis. Our failure to find differences in cancer care immediately pre-and post-Medicare eligibility may therefore simply reflect the natural history of this disease. This is plausible but mitigated somewhat by the persisting absence of differences even at 24 months' follow-up of lung cancer. Finally, differences in cancer care due to reduced pre-Medicare access among the uninsured or underinsured may exist, but could be compensated for by physicians providing differential care to these upon eligibility. Our study could not identify such confounding, but cannot rule this explanation out.

The simplest explanation for our results is also the most reassuring. Patients with serious diseases receive timely investigation, diagnosis, and treatment regardless of insurance coverage. On the patient side, the symptoms and signs of undiagnosed lung cancer may lead a patient to seek investigation regardless of ability to pay. On the provider side, the seriousness of diagnosed lung cancer may ensure the provision of care to such patients regardless of ability to pay.

Even though we found no evidence of Medicare effects in an acute, serious disease, there may be unobserved improvements in patient well-being. For example, access to health care may provide subjective improvements in stress. In lung cancer, the availability of expensive epidermal Growth Factor Receptor (eGFR) tyrosine kinase inhibitors such as erlotinib (Tarceva®) in 2005 coincides with the end of our sample period. Insurance coverage may have allowed patients to derive greater utility from such availability, including decreased symptoms,⁴³ despite relatively small extensions of life.

Looking forward, low-dose chest CT scans to screen for lung cancer in patients may be increasingly accepted as effective preventive care compared with radiographic screens.⁴² Access to insurance is likely to increase access to such advanced preventive care, although patterns of care utilization may not change substantially after insurance is gained.⁴⁴

Even if there is no evidence of clinical effects of Medicare, there may be individual utility improvements from access to universal insurance among the near-elderly.²⁰ Inadequate access to actuarially fair insurance prevents consumption smoothing. Unaffordable access to private coverage for uninsured newly ill near-elderly households may lead to severe household wealth shocks.⁴⁵ Since the near-elderly are risk-averse and financially constrained, both of these non-clinical effects matter.

In conclusion, this study of an important and common cancer suggests that insurance status is not substantively associated with differences neither in access, treatment type and delay, nor in outcomes around the time of Medicare eligibility. Although extending Medicare-like benefits to the uninsured and underinsured near-elderly may be justified on many grounds, our results suggest that for these serious diseases there would be no significant improvements in outcomes.

Appendix

Robustness Checks

We considered 3 potential threats to the robustness of our results. These hinged around (1) adequacy of the study's power, whether (2) inclusion in the study was biased by potential nonrandom missingness, and whether (3) the diagnostic threshold for lung cancer was constant.

Study Power to Detect Cohort Differences

Given the general lack of significant differences found in this study, it is important to question the level of statistical power conferred by the cohort sizes. For the lung cancer cohort sizes of 2500 patients, pairwise comparisons of lung cancer treatment receipt could detect differences of 3.5% points with 80% power, and similarly 3.5% point differences in survival, both at a specified type I error rate of 5%.

To put the latter difference into context, the death rate at 24 months was almost 70%. Our 3.5% point detectable difference thus corresponds to a relative difference of approximately 5% between the cohorts. The results of Card et al¹⁵ show a 20% relative reduction in deaths for severely ill patients treated urgently immediately after the age of 65 years, compared with similar patients treated immediately before the age of 65 years, a mortality gap that persisted for at least 9 months after the index admission. Relative differences of such large magnitude could confidently be ruled out by our results for lung cancer.

Lung Cancer Pre-Medicare Cohort Nonrandom Missingness

A major concern with our use of SEER*Medicare data for lung cancer analyses is that participation in the study is conditioned on survival to Medicare eligibility. That is, patients who succumb to their disease (whether diagnosed or not) before reaching the age of 65 years are not ascertained by NCI.

If substantial numbers of patients are missing not at random from the pre-eligible cohort of patients diagnosed at age 64.5 to 65 years, then a potential bias to the null of no differences could exist. On average, patients in this age group have to survive 3 months to be eligible for Medicare, while facing a mortality risk of approximately 25% over 3 months after diagnosis. Thus, it is potentially possible that many patients could die before ascertainment, although the similarities in demographics between earlier and later cohorts militate against this explanation.

If such lack of ascertainment occurred, it is theoretically possible that the distribution of observed disease severity would be truncated from above in this cohort as more serious, more advanced cases died before ascertainment. However, we saw no evidence of such stage migration.

To understand this better, we examined cohort membership by age in months. Overall, there is a smooth increase up to age 65 years (Figure A1). In the 18 months' window of

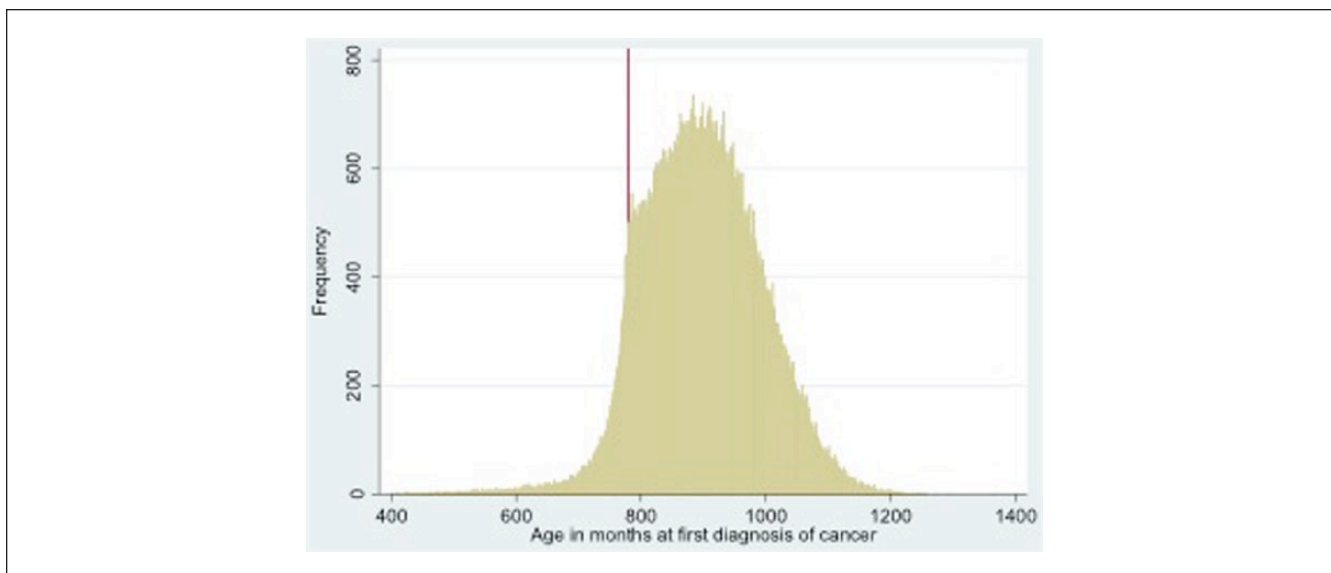


Figure A1. Complete distribution of lung cancer cohort sizes, by age in months.
 Note. Vertical line at 780 months corresponds to 65 years of age.

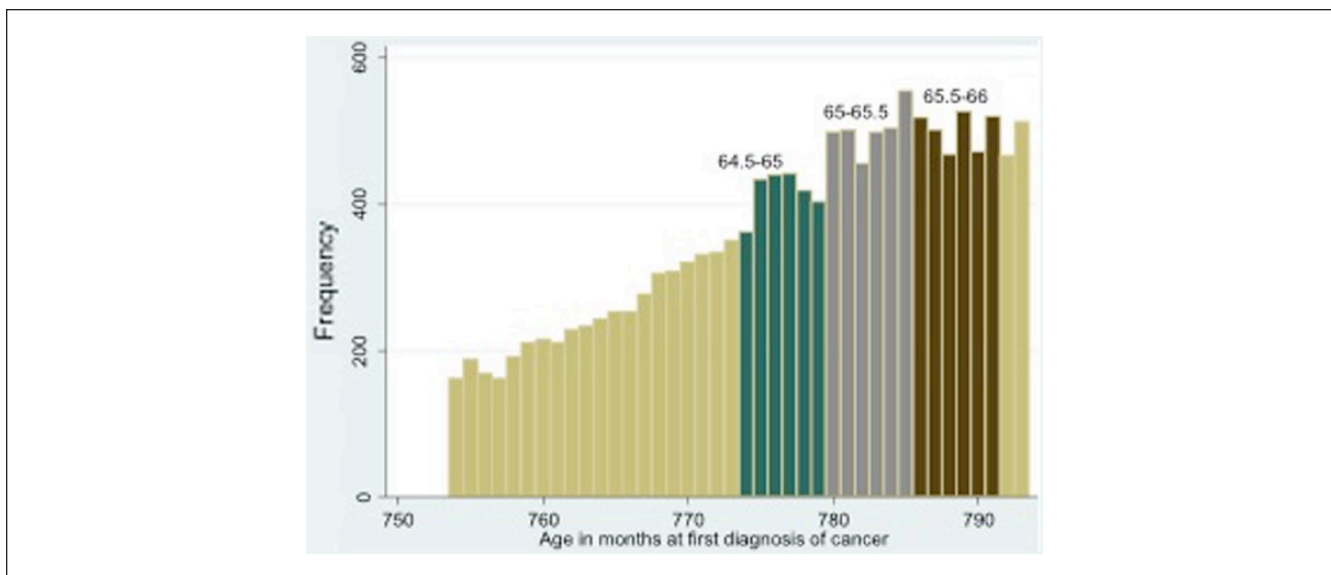


Figure A2. Lung cancer cohort sizes, by age in months around 65th year of age.

patient ages before the 64.5 to 65 years cohort, there is a steady upward trend, consistent with a biological increase in incidence and without substantial attrition (Figure A2). In the crucial 64.5 to 65 years cohort, no sharp fall off is seen. Instead, an increase in each month of age of around 100 patients is seen. The size of final month in this cohort, corresponding to a patient aged 64 years 11 months, remains consistent with the longer trend. Over the 24 months’ window examined, it appears that cohort size is reasonably constant. We believe this provides some reassurance that lack of ascertainment is not biasing our results from finding differences between the cohorts.

Lung Cancer Cohort Dependence on Diagnostic Threshold Stability

A further limitation is that we assumed that there was no change in diagnostic thresholds such as screening after the age of 65 years.⁴⁶ If this is incorrect, then the possibility of stage migration biases exists.⁴⁷ An asymptomatic patient with access to Medicare may procure a chest x-ray or CT chest due to concerns about prior smoking during the patient’s “welcome to Medicare” physical which is covered in the first 12 months after obtaining Part B coverage.

Such hypothetical Medicare-induced increased detection was, however, not found in our analysis, and the positive results found by Aberle and colleagues⁴² on low-dose CT screening for lung cancer did not come out till well after our cohort.

Declaration of Conflicting Interests

The author(s) declared no potential conflicts of interest with respect to the research, authorship, and/or publication of this article.

Funding

The author(s) received no financial support for the research, authorship, and/or publication of this article.

References

- Institute of Medicine. *Care Without Coverage: Too Little, Too Late*. Washington, DC: National Academies Press; 2002.
- Institute of Medicine. *America's Uninsured Crisis: Consequences for Health and Health Care*. Washington, DC: National Academies Press; 2009.
- Franks PC, Clancy M, Gold MR. Health insurance and mortality. Evidence from a national cohort. *JAMA*. 1993;270:737-741.
- Keeler EB, Brook RH, Goldberg GA, Kamberg CJ, Newhouse JP. How free care reduced hypertension in the health insurance experiment. *JAMA*. 1985;254:1926-1931.
- Baker DW, Sudano JJ. Loss of health insurance and the risk for a decline in self-reported health and physical functioning. *Med Care*. 2002;40:1126-1131.
- Baker DW, Sudano JJ, Albert JM, Borawski EA, Dor A. Lack of health insurance and decline in overall health in late middle age. *N Engl J Med*. 2001;345:1106-1112.
- McWilliams JM. Health consequences of uninsurance among adults in the United States: recent evidence and implications. *Milbank Q*. 2009;87:443-494.
- Wilper AP, Woolhandler S, Lasser KE, McCormick D, Bor DH, Himmelstein DU. Health insurance and mortality in US adults. *Am J Public Health*. 2009;99:2289-2295.
- McWilliams JM, Zaslavsky AM, Meara E, Ayanian JZ. Health insurance coverage and mortality among the near-elderly. *Health Aff (Millwood)*. 2004;23:223-233.
- Baker DW, Sudano JJ, Durazo-Arvizu R, Feinglass J, Witt WP, Thompson J. Health insurance coverage and the risk of decline in overall health and death among the near elderly, 1992-2002. *Med Care*. 2006;44:277-282.
- Sudano JJ Jr, Baker DW. Intermittent lack of health insurance coverage and use of preventive services. *Am J Public Health*. 2003;93:130-137.
- Wilensky GR. The shortfalls of "Obamacare." *N Engl J Med*. 2012;367:1479-1481.
- Jost TS, Rosenbaum S. The Supreme Court and the future of Medicaid. *N Engl J Med*. 2012;367:983-985.
- Jacobson G, Schwartz K, Neuman T. Health insurance coverage for older adults: implications of a Medicare buy-in. <http://www.kff.org/healthreform/upload/7904-02.pdf>. Published 2009. Accessed May 31, 2012.
- Card D, Dobkin C, Maestas N. Does Medicare save lives? *Q J Econ*. 2009;124:531-596.
- McWilliams JM, Meara E, Zaslavsky AM, Ayanian JZ. Use of health services by previously uninsured Medicare beneficiaries. *N Engl J Med*. 2007;357:143-153.
- McWilliams JM, Meara E, Zaslavsky AM, Ayanian JZ. Health of previously uninsured adults after acquiring Medicare coverage. *JAMA*. 2007;298:2886-2894.
- Card D, Dobkin C, Maestas N. The impact of nearly universal insurance coverage on health care utilization: evidence from Medicare. *Am Econ Rev*. 2008;98:2242-2258.
- McWilliams JM, Meara E, Zaslavsky AM, Ayanian JZ. Differences in control of cardiovascular disease and diabetes by race, ethnicity, and education: U.S. trends from 1999 to 2006 and effects of Medicare coverage. *Ann Intern Med*. 2009;150:505-515.
- Polsky D, Doshi JA, Escarce JJ, et al. The health effects of Medicare for the near-elderly uninsured. *Health Serv Res*. 2009;44:926-945.
- McWilliams JM, Meara E, Zaslavsky AM, Ayanian JZ. Commentary: assessing the health effects of Medicare coverage for previously uninsured adults: a matter of life and death? *Health Serv Res*. 2010;45:1407-1422.
- Bhattacharya J. Insuring the near-elderly: how much would Medicare save? *Ann Intern Med*. 2009;151:816-817.
- Finkelstein A, McKnight R. What did Medicare do? The initial impact of Medicare on mortality and out of pocket medical spending. *J Public Econ*. 2008;92:1644-1668.
- Pauly M. The economics of moral hazard: comment. *Am Econ Rev*. 1968;58:531-536.
- Halpern MT, Ward EM, Pavluck AL, Schrag NM, Bian J, Chen AY. Association of insurance status and ethnicity with cancer stage at diagnosis for 12 cancer sites: a retrospective analysis. *Lancet Oncol*. 2008;9:222-231.
- Centers for Disease Control and Prevention. Lung cancer statistics. <http://www.cdc.gov/cancer/lung/statistics/>. Published 2012. Accessed May 15, 2012.
- National Cancer Institute. 2010. Surveillance, Epidemiology, and End Results (SEER) Program (www.seer.cancer.gov) SEER*Stat Database: Incidence-SEER 17 Regs Research Data + Hurricane Katrina Impacted Louisiana Cases, Nov 2009 Sub (1973-2007 varying)—Linked to County Attributes—Total U.S., 1969-2007 Counties, National Cancer Institute, DCCPS, Surveillance Research Program, Cancer Statistics Branch, released April 2010, based on the November 2009 submission.
- National Cancer Institute. SEER-Medicare files. <http://healthservices.cancer.gov/seermedicare/>. Published 2012. Accessed May 15, 2012.
- National Cancer Institute. Documentation for Patient Entitlement and Diagnosis Summary File. <http://healthservices.cancer.gov/seermedicare/aboutdata/PEDSF.pdf>. Published 2012. Accessed May 15, 2012.
- SEER-Medicare Spring Training. Measuring surgery using SEER-Medicare data. <http://videocast.nih.gov/>. Published 2010. Accessed May 15, 2012.
- Lauer MS, Topol EJ. Clinical trials—multiple treatments, multiple end points, and multiple lessons. *JAMA*. 2003;289:2575-2577.
- Putter H, Fiocco M, Geskus RB. Tutorial in biostatistics: competing risks and multi-state models. *Stat Med*. 2007;26:2389-2430.

33. Prentice RL, Kalbfleisch JD, Peterson AV Jr, Flournoy N, Farewell VT, Breslow NE. The analysis of failure times in the presence of competing risks. *Biometrics*. 1978;34:541-554.
34. Southern DA, Faris PD, Brant R, et al. Kaplan-Meier methods yielded misleading results in competing risk scenarios. *J Clin Epidemiol*. 2006;59:1110-1114.
35. National Cancer Institute—SEER*Stat Software. 2010. Latest Release: Version 6.6.2. National Cancer Institute, DCCPS, Surveillance Research Program. www.seer.cancer.gov/seers. Published April 13, 2010. Accessed April 15, 2016.
36. Rothman KJ. No adjustments are needed for multiple comparisons. *Epidemiology*. 1990;1:43-46.
37. Baker DW, Sudano JJ. Health insurance coverage during the years preceding Medicare eligibility. *Arch Intern Med*. 2005;165:770-776.
38. McWilliams JM, Zaslavsky AM, Meara E, Ayanian JZ. Impact of Medicare coverage on basic clinical services for previously uninsured adults. *JAMA*. 2003;290:757-764.
39. Warren JL, Klabunde CN, Schrag D, Bach PB, Riley GF. Overview of the SEER-Medicare data: content, research applications, and generalizability to the United States elderly population. *Med Care*. 2002;40(suppl):IV-3-IV-18.
40. Warren JL, Harlan LC, Fahey A, et al. Utility of the SEER-Medicare data to identify chemotherapy use. *Med Care*. 2002;40(suppl):IV-55-IV-61.
41. Elkin EB, Bach PB. Cancer's next frontier: addressing high and increasing costs. *JAMA*. 2010;303:1086-1087.
42. Aberle DR, Adams AM, Berg CD, et al. Reduced lung-cancer mortality with low-dose computed tomographic screening. *N Engl J Med*. 2011;365:395-409.
43. Shepherd FA, Pereira JR, Ciuleanu T, et al. Erlotinib in previously treated non-small-cell lung cancer. *N Engl J Med*. 2005;353:123-132.
44. Decker SL, Doshi JA, Knaup AE, Polsky D. Health service use among the previously uninsured: is subsidized health insurance enough? *Health Econ*. 2012;21:1155-1168.
45. Cook K, Dranove D, Sfekas A. Does major illness cause financial catastrophe? *Health Serv Res*. 2010;45:418-436.
46. Bach PB, Jett JR, Pastorino U, Tockman MS, Swensen SJ, Begg CB. Computed tomography screening and lung cancer outcomes. *JAMA*. 2007;297:953-961.
47. Feinstein AR, Sosin DM, Wells CK. The Will Rogers phenomenon. Stage migration and new diagnostic techniques as a source of misleading statistics for survival in cancer. *N Engl J Med*. 1985;312:1604-1608.