

UCLA

UCLA Previously Published Works

Title

Volume changes and brain-behavior relationships in white matter and subcortical gray matter in children with prenatal alcohol exposure

Permalink

<https://escholarship.org/uc/item/7qd0t8m3>

Journal

Human Brain Mapping, 36(6)

ISSN

1065-9471

Authors

Gautam, Prapti
Lebel, Catherine
Narr, Katherine L
[et al.](#)

Publication Date

2015-06-01

DOI

10.1002/hbm.22772

Peer reviewed

Volume Changes and Brain-Behavior Relationships in White Matter and Subcortical Gray Matter in Children With Prenatal Alcohol Exposure

Prapti Gautam,¹ Catherine Lebel,² Katherine L. Narr,³ Sarah N. Mattson,⁴ Philip A. May,⁵ Colleen M. Adnams,⁶ Edward P. Riley,⁴ Kenneth L. Jones,⁷ Eric C. Kan,¹ and Elizabeth R. Sowell^{1*}

¹Department of Pediatrics, Developmental Cognitive Neuroimaging Laboratory, Keck School of Medicine, USC/Children's Hospital of Los Angeles, Los Angeles, California

²Department of Radiology, University of Calgary, Calgary, Canada

³Department of Neurology, University of California, Los Angeles, Los Angeles, California

⁴Department of Psychology, San Diego State University, San Diego, California

⁵Department of Nutrition, Gillings School of Global Public Health, Nutrition Research Institute, The University of North Carolina, Chapel Hill, North Carolina

⁶Department of Psychiatry and Mental Health, University of Cape Town, Cape Town, South Africa

⁷Department of Pediatrics, University of California, San Diego, La Jolla, California

Abstract: Children with prenatal alcohol exposure (PAE) may have cognitive, behavioral and brain abnormalities. Here, we compare rates of white matter and subcortical gray matter volume change in PAE and control children, and examine relationships between annual volume change and arithmetic ability, behavior, and executive function. Participants ($n = 75$ PAE/64 control; age: 7.1–15.9 years) each received two structural magnetic resonance scans, ~2 years apart. Assessments included Wechsler Intelligence Scale for Children (WISC-IV), the Child Behavior Checklist and the Behavior Rating Inventory of Executive Function. Subcortical white and gray volumes were extracted for each hemisphere. Group volume differences were tested using false discovery rate ($q < 0.05$). Analyses examined group-by-age interactions and group-score interactions for correlations between change in volume and raw behavioral scores. Results showed that subjects with PAE had smaller volumes than control subjects across the brain. Significant group-score interactions were found in temporal and parietal regions for WISC arithmetic scores and in frontal and parietal regions for behavioral measures. Poorer cognitive/behavioral outcomes were associated with larger volume increases in PAE, while control subjects gen-

Additional Supporting Information may be found in the online version of this article.

Prapti Gautam and Catherine Lebel contributed equally to this work.

Contract grant sponsor: This work was performed in conjunction with the Collaborative Initiative on Fetal Alcohol Spectrum Disorders (CIFASD), which is funded by grants from the National Institute on Alcohol and Alcohol Abuse (NIAAA). Additional information about CIFASD can be found at www.cifasd.org. This work was also supported by NIAAA grants U01 AA017122-01 to ERS and U24AA014811 to EPR, U01 AA014834 to SNM, and U01 AA11685 and R01 AA15134 to PAM; National Institute of Drug

Abuse grant R01DA017831 to ERS, and National Institute of Child Health and Human Development R01 HD053893 to ERS.

*Correspondence to: Elizabeth R. Sowell, Keck School of Medicine, University of Southern California, Division of Research on Children, Youth and Families, Department of Pediatrics, Children's Hospital Los Angeles, 4650 Sunset Blvd., Mailstop #130, Los Angeles, CA 90027. E-mail: esowell@chla.usc.edu

Received for publication 28 May 2014; Revised 3 February 2015; Accepted 10 February 2015.

DOI: 10.1002/hbm.22772

Published online 25 February 2015 in Wiley Online Library (wileyonlinelibrary.com).

erally showed no significant correlations. In contrast with previous results demonstrating different trajectories of cortical volume change in PAE, our results show similar rates of subcortical volume growth in subjects with PAE and control subjects. We also demonstrate abnormal brain-behavior relationships in subjects with PAE, suggesting different use of brain resources. Our results are encouraging in that, due to the stable volume differences, there may be an extended window of opportunity for intervention in children with PAE. *Hum Brain Mapp* 36:2318–2329, 2015. © 2015 Wiley Periodicals, Inc.

Key words: prenatal alcohol exposure; fetal alcohol spectrum disorders; magnetic resonance imaging; white matter; gray matter; brain development

INTRODUCTION

Children with heavy prenatal alcohol exposure (PAE) can be impaired in executive functions and overall intelligence [Astley and Clarren, 2000; Mattson, Crocker et al., 2011], and may have structural brain abnormalities [Riley, Mattson et al., 1995]. Diagnosis of fetal alcohol syndrome (FAS) is based on facial dysmorphism (such as short palpebral fissures, smooth philtrum, and thin vermilion border); central nervous system abnormalities; growth deficiency; and documentation of alcohol exposure [Hoyme et al., 2005; Jones and Smith, 1973]. However, individuals with PAE may present across the full continuum of fetal alcohol effects, both with and without facial dysmorphism [Sampson et al., 1997].

Of the various cognitive domains affected in PAE, many studies have shown particularly poor arithmetic abilities [Goldschmidt et al., 1996; Streissguth et al., 1994], and performance has been linked to a dose-response relationship where higher PAE relates to poorer arithmetic scores [Sampson, Streissguth et al., 2000]. Additionally, those with PAE show many conduct and behavioral difficulties [Mattson, Crocker et al., 2011]. 42% of children diagnosed with PAE also have attention-deficit hyperactivity disorders (ADHD) [Bhatara et al., 2006]. Similarly, deficiencies in working memory and conduct disorders are prevalent in this population [Mattson, Calarco et al., 2006; Mattson, Crocker et al., 2011]. The attention subscale of the Child Behavior Checklist (CBCL) has been found to discriminate between PAE and control subjects with 93% specificity [Lee, Mattson et al., 2004]. The Behavior Rating Inventory of Executive Functioning (BRIEF) questionnaire has also been widely used to diagnose executive function deficits in PAE [Stevens, Nash et al., 2013].

The documented behavioral changes in PAE are accompanied by brain structural and functional alterations. Abnormalities of brain structures in children and adults with PAE have been reported frequently over the last few decades. Cross-sectional studies have shown smaller whole brain volume [Archibald et al., 2001a; Lebel et al., 2008; Roussotte et al., 2012; Sowell et al., 2001] and abnormalities in parietal, frontal, and temporal lobe white and gray matter structures in children with PAE compared to unexposed control subjects [Sowell et al., 2002, 2008]. Smaller white

matter volumes and corpus callosum have also been widely reported [Sowell et al., 2001; Wozniak and Muetzel, 2011]. Similarly, previous studies have shown smaller hippocampi, basal ganglia, as well as the global pallidus, caudate nucleus, putamen, and the thalamus in PAE [Archibald et al., 2001a; Nardelli et al., 2011; Riikonen et al., 2005]. While volume reductions associated with PAE are widespread, cross-sectional studies suggest that white matter and subcortical gray matter are disproportionately affected, with reductions of 9–13% relative to control subjects, compared to 7–8% for total brain volume and cortical gray matter [Astley et al., 2009; Nardelli et al., 2011].

Two cross-sectional studies examined age-related effects in subcortical gray matter volume in children with PAE. One report describes no significant volume-age correlations in the putamen, caudate, hippocampus, or amygdala, but significantly age-related volume increases in the thalamus for control subjects and the globus pallidus for both groups [Nardelli et al., 2011]. No significant group-by-age interactions were noted for brain volumes in that study. Another study reported bigger hippocampi with age in control subjects but not in alcohol-exposed children aged 9–15 years [Willoughby et al., 2008]; again, interactions were not significant. Longitudinal studies are necessary to properly assess developmental trajectories. Longitudinal changes in cortical gray matter volume and white matter integrity have been recently described in this population where different trajectories of gray matter development [Lebel et al., 2012a] and white matter microstructure [Treit et al., 2013] were observed in children with PAE, although similar rates of change have been observed in white matter volumes of frontal, parietal, and callosal regions and subcortical regions [Treit et al., 2013; Gautam et al., 2014a, in press].

In regards to directly assessing brain-behavior relationships, functional magnetic resonance imaging (fMRI) studies show significantly lower activation during mental arithmetic tasks in the parietal and frontal regions in PAE [Santhanam et al., 2009]. Similarly, math performance has been related to white matter fractional anisotropy in those with PAE [Lebel et al., 2010]. In other clinical cohorts such as in those with anxiety and attention disorders, behavioral and conduct disorders have been linked with abnormal structure and activity of subcortical regions such as the caudate, striatum, amygdala, and the hippocampus. Lower

functional activity of the amygdala, hippocampus, and the striatum has been seen in youth with conduct disorders [Crowley et al., 2010; Fairchild et al., 2013; Marsh et al., 2013], while smaller thalamus are found in children with ADHD [Xia et al., 2012]. In contrast, negative or non-significant relationships in brain-behavior relationships have been reported previously both in typical children [Lebel et al., 2010] and in typical older populations [Gautam et al., 2011].

Recently, we reported on significantly different *trajectories of brain* activation in visuospatial attention and working memory tasks in those with PAE, where only decreases in brain activation over time were observed for PAE, and increases were observed for control subjects [Gautam et al., 2014a, in press]. This study revealed that following subjects longitudinally can be informative on developmental changes that take place over time, and can be useful in understanding such processes in more detail. Hence, the objectives of this study were to investigate whether children and adolescents with PAE have different rates of volume change with age in white matter and subcortical gray matter compared to control subjects through a longitudinal follow-up design. Second, as it is not known how longitudinal change in these white matter and subcortical volumes relate to behavioral symptoms and arithmetic ability in those with PAE, we aimed to determine brain-behavior relationships between age-related changes in subcortical volumes and arithmetic ability as well as parental reports of behavioral problems and executive function. Given previous reported relationships with change in white matter volumes increases in PAE and executive function [Gautam et al., 2014a] and arithmetic ability [Lebel et al., 2010], we hypothesized significant relationships between brain structure volume change and behavior in the PAE children.

MATERIALS AND METHODS

Subjects

This study was part of the Collaborative Initiative on Fetal Alcohol Spectrum Disorders (CIFASD) and included data from 139 subjects studied at three sites: Los Angeles, California ($n=34$: 18 male/16 female, 11 control/23 alcohol-exposed, 32 right-handed/2 left-handed), San Diego, California ($n=20$: 12 male/8 female, 11 control/9 alcohol-exposed, 17 right-handed/3 left-handed), and Cape Town, South Africa ($n=85$: 47 male/38 female, 42 control/43 alcohol-exposed, 81 right-handed/4 left-handed). Subjects were aged 7.1–15.9 years (12.3 ± 2.6 years) at the time of their first MRI scan, and were all scanned again approximately 2 years later at the same site with the same imaging protocol. Imaging data on subsets of these subjects have been previously published [Roussotte et al., 2010; Yang, Phillips, et al., 2011a; Yang, Roussotte, et al., 2011b], including longitudinal change in cortical volumes [Lebel et al., 2012a], longitudinal change in working memory and attention

[Gautam et al., 2014a] and relationships between longitudinal change in white matter and executive functions over time [Gautam et al., 2014a].

Detailed alcohol exposure information (frequency of drinking, average drinks per occasion) was available for 38 of 75 alcohol-exposed subjects and 57 of 64 control subjects. Most control subjects had no PAE during any trimester of pregnancy; none had exposure in excess of 1 standard drink per week on average during pregnancy, or more than 2 drinks on any one occasion. Alcohol-exposed subjects had heavy PAE, defined as more than 4 standard drinks per occasion at least once per week, or more than 13 drinks per week at least once during pregnancy. Subjects without documentation of specific exposure amounts were also classified as PAE if there was reasonable suspicion of heavy PAE or documented maternal history of alcohol abuse, and evidence for neurobehavioral/neurocognitive deficits. Examples of reasonable reasons include (i) drinking reports obtained from a close relative who had close contact with the family (e.g., child's grandmother) and (ii) orphanage documentation that the mother had registered as an alcoholic. For alcohol-exposed subjects, the average numbers of drinks per week were 12, 12, and 9 for the first, second, and third trimesters, respectively. 30 alcohol-exposed subjects were classified as having FAS and 13 with partial FAS (PFAS) based on the Institute of Medicine guidelines as per the Hoyme criteria [Hoyme et al., 2005].

Detailed recruiting methods have been described elsewhere [Mattson et al., 2010]. In brief, control subjects were recruited from each site via advertisements, word of mouth, or national registers. Alcohol-exposed subjects were recruited through diagnostic clinics and/or previous studies. Alcohol exposure was confirmed through parent/guardian interviews, questionnaires, and social, medical, and/or legal records, where available. Participants were excluded for: significant head injury with loss of consciousness for more than 30 min; significant physical or psychiatric disability that would prevent participation in the imaging and/or cognitive assessments; if born younger than 34 weeks; or if presenting with any known causes of mental deficiency, such as chromosomal abnormalities.

After an explanation of procedures, all subjects provided assent and their parent/guardian provided written informed consent. The Institutional Review Boards at University of California at Los Angeles (UCLA), San Diego State University (SDSU), and the University of Cape Town approved all procedures.

Cognitive and Behavioral Assessments

Participants were assessed with the Wechsler Intelligence Scale for Children, Fourth Edition (WISC-IV), including the arithmetic subtest. Higher scores in the arithmetic subset represent better performance. The CBCL and the Brief Rating Inventory of Executive Function (BRIEF)

were also completed by parents/guardians. For this study, composite measures for conduct and attention problems from the CBCL were used, as well as the BRIEF global composite executive function measure. For these behavioral assessments, higher scores in all three subscales denote worse behavioral outcomes while lower scores represent more typical behaviors. The complete neurocognitive methods of the CIFASD project are described in detail elsewhere [Mattson et al., 2010].

Image Acquisition

High resolution T1-weighted MRI was collected with the following parameters. In Los Angeles, California (1.5T Siemens Sonata): TR=1,900, TE=4.38 ms, flip angle 15°, matrix 256 × 256 × 160, FOV 256 × 256 mm, total acquisition time 8:08; in Cape Town, South Africa (3T Siemens Allegra): TR=2,200, TE=5.16 ms, flip angle 12°, matrix 256 × 256 × 160, field of view 256 × 256 mm, total time 7:04; in San Diego, California (3T GE Signa Excite): using TR=8, TE=3.0 ms, flip angle 12°, matrix 256 × 256 × 192, field of view 240 × 240 mm, total acquisition time 7:04. Final resolution was 1 × 1 × 1 mm³ for Los Angeles and San Diego, and 0.94 × 0.94 × 1 mm³ for Cape Town. Data demonstrating reliability of the T1-weighted scanning protocols across sites have been previously reported [Lebel et al., 2012a].

Image Processing

All data were processed through the longitudinal stream in FreeSurfer v5.1, using robust, inverse consistent registration [Reuter et al., 2010] to create an unbiased within-subject template [Reuter and Fischl, 2011]. Information from each subject template was used to initialize longitudinal image processing, increasing repeatability and statistical power. Using these processing techniques, we obtained volumes for 34 white matter regions and 7 subcortical gray matter structures per hemisphere, as well as 5 callosal regions (for a total of 87 regions).

Statistical Analysis

Statistical analysis was conducted in SPSS v20 and R.

We were ultimately interested in group differences in trajectories of volume change, rather than absolute differences at particular time points. However, as a first pass to help control for multiple comparisons, a preliminary analysis tested for group differences in subcortical volumes using mixed models with site and subject as random variables (including both time points for each subject). False discovery rate (FDR) correction was used to correct for multiple comparisons between groups; corrected values of $q < 0.05$ were considered significant. Subsequently, we tested for group interactions for age trajectories only in regions that met the original FDR-corrected threshold for significant group volume differences. Mixed models were used, with site and subject as random variables, to

examine group-age interactions. Significant results indicate differing developmental trajectories. Mixed models were also used, with site and subject as random variables and controlling for age, to test for correlations between volume changes and WISC-IV arithmetic scores (raw), CBCL attention and conduct problem scores, and BRIEF executive function composite scores, again only in regions with significant group volume differences. Significant brain-behavior interactions indicate different volume-score relationships in alcohol-exposed versus control subjects. A P -value of 0.01 was considered significant for these follow-up tests; regions with $0.01 < P < 0.05$ are reported as trends.

RESULTS

Demographics

Group demographics are shown in Table I. Age, sex, and handedness were not significantly different between groups. The average number of drinks per week was significantly higher in the alcohol-exposed group in all three trimesters ($P < 0.001$). WISC-IV Arithmetic scores were significantly lower in the alcohol-exposed group than in control subjects ($P = 0.005$). The CBCL scores for attention and conduct problems were significantly higher in the alcohol-exposed group ($P < 0.001$), as was the BRIEF global executive composite score ($P = 0.049$).

Group Differences in White and Subcortical Gray Matter Volumes and Development Trajectories

After FDR correction, most regions (79 of 87) had significant group differences; only the left pars opercularis, posterior cingulate and lateral occipital regions, the right amygdala, and the bilateral banks of the superior temporal sulcus and temporal poles did not have significant group differences of volume (Fig. 1). Trajectories of volume change were examined only within regions that displayed significant group differences. Of these 79 regions, only the right and left transverse temporal regions had significant age-group interactions ($P = 0.041, 0.0071$, respectively). In both cases, subjects with PAE displayed significant linear volume increases over time ($P = 0.0004, 0.04$ in the left and right hemispheres, respectively), while age-related changes in control subjects were not significant (Fig. 2). These significant group differences remained after controlling for variation in head size (Intracranial volume) at Time 1 (Supporting Information Table I).

For most brain regions, volume significantly increased over time, but trajectories were similar between groups. Only the anterior and midanterior corpus callosum, the left amygdala, banks of the superior temporal sulcus, isthmus cingulate, middle temporal, supramarginal, frontal pole, and insula; the right pars orbitalis, posterior cingulate, and rostral middle frontal; and bilateral caudal anterior cingulate,

TABLE I. Demographic information for the alcohol-exposed and control groups

	Alcohol-exposed	Control	t-statistic for group differences	P-value
Age at first scan (years; $n=75, 64$)	12.3 ± 2.6	12.3 ± 2.5	0.25	0.98
Gender ($n=75, 64$)	46 male, 29 female	31 male, 33 female	2091 ^a	0.13
Handedness ($n=75, 64$)	69 right, 6 left	61 right, 3 left	2320 ^a	0.43
Palpebral fissure length (PFL, cm; $n=67, 58$)	2.42 ± 0.21	2.56 ± 0.13	4.4	<0.001
Lip Rank ($n=65, 56$)	3.6 ± 0.7	3.2 ± 0.7	-3.6	<0.001
Philtrum Rank ($n=65, 55$)	3.6 ± 0.8	3.0 ± 0.9	-3.9	<0.001
WISC Arithmetic, Scaled ($n=73, 60$)	6.8 ± 2.5	8.3 ± 3.5	2.8	0.005
CBCL Attention ($n=71, 58$)	61 ± 9	54 ± 5	-5.8	<0.001
CBCL Conduct ($n=61, 55$)	60 ± 8	54 ± 5	-5.3	<0.001
Alcohol exposure 1st trimester (Average # drinks/week; $n=57, 38$)	12 ± 2	0 ± 0.0	-8.2	<0.001
PAE 2nd trimester (# drinks/week; $n=57, 39$)	12 ± 2	0.1 ± 0.01	-6.2	<0.001
PAE 3rd trimester (# drinks/week; $n=57, 39$)	9 ± 1	0 ± 0	-6.1	<0.001

The alcohol-exposed group consisted of 75 subjects, and the control group was 64 subjects; as not all subjects had valid measurements for each variable, actual subject numbers are given in left column for each variable ($n_{\text{alcohol-exposed}}, n_{\text{control}}$).

^aFor gender and handedness, the nonparametric Mann-Whitney U test statistic was used.

cuneus, entorhinal, lingual, medial orbital frontal, parahippocampal, temporal pole, rostral anterior cingulate areas showed no significant age-related changes over time.

Correlations Between Volume Changes and Cognition or Behavior

Group interactions for correlations between volume changes and cognitive/behavioral scores were examined in the 79 regions with significant group differences of volume. These analyses were considered exploratory and thus a $P < 0.01$ was used without further correction while those at $P < 0.05$ were considered a trend. These secondary analyses would not survive a FDR correction.

Significant group interactions for WISC Arithmetic scores were observed in the right inferior temporal ($P=0.003$), right superior temporal ($P=0.003$) regions while others showed a trend (mid anterior corpus callosum ($P=0.040$), left middle temporal white matter ($P=0.023$), right supramarginal ($P=0.03$), and the right inferior parietal regions ($P=0.029$)), (Fig. 3). Correlations between volume changes and WISC Arithmetic scores were more positive among participants with PAE subjects (positive for all regions except for middle corpus callosum) than among control subjects (negative for all except middle corpus callosum and middle temporal), indicating that higher arithmetic scores in subjects with PAE are often associated with larger volume increases over time.

Significant group interactions were observed for CBCL attention problems in the left caudal middle frontal ($P=0.001$) region. Trends were also observed in the left rostral middle frontal ($P=0.027$), paracentral ($P=0.024$),

and postcentral ($P=0.036$) regions, and in the right entorhinal ($P=0.017$) and precentral regions ($P=0.029$), and bilaterally in the superior frontal regions ($Lp=0.049$, $Rp=0.024$) (Fig. 4). Relationships in participants with PAE were positive, indicating that worse attention problems were associated with larger white matter volume increases, while relationships in control subjects were negative, indicating that fewer attention problems were associated with larger volume increases.

Only trends were observed for interactions with CBCL conduct problems: in the left middle temporal ($P=0.036$) and right pars triangularis regions ($P=0.020$) (Fig. 4). In the left middle temporal area, there was a nonsignificant negative correlation in PAE subjects and a nonsignificant positive correlation in control subjects. In the right pars triangularis, the opposite was true—correlations were positive in PAE and negative in control subjects, but nonsignificant ($P=0.051, 0.1$, respectively).

BRIEF executive function scores were differentially associated with volume changes in the right pallidum ($P=0.001$), pars triangularis ($P=0.008$) and a trend was observed in pars orbitalis ($P=0.031$) (Fig. 4). In these regions, correlations were negative in control subject (more normal executive function associated with larger volume increases), and positive or non significant in participants with PAE.

DISCUSSION

Using a large sample size and a longitudinal design, we show that children and adolescents with PAE have smaller subcortical volumes than unexposed control subjects, and

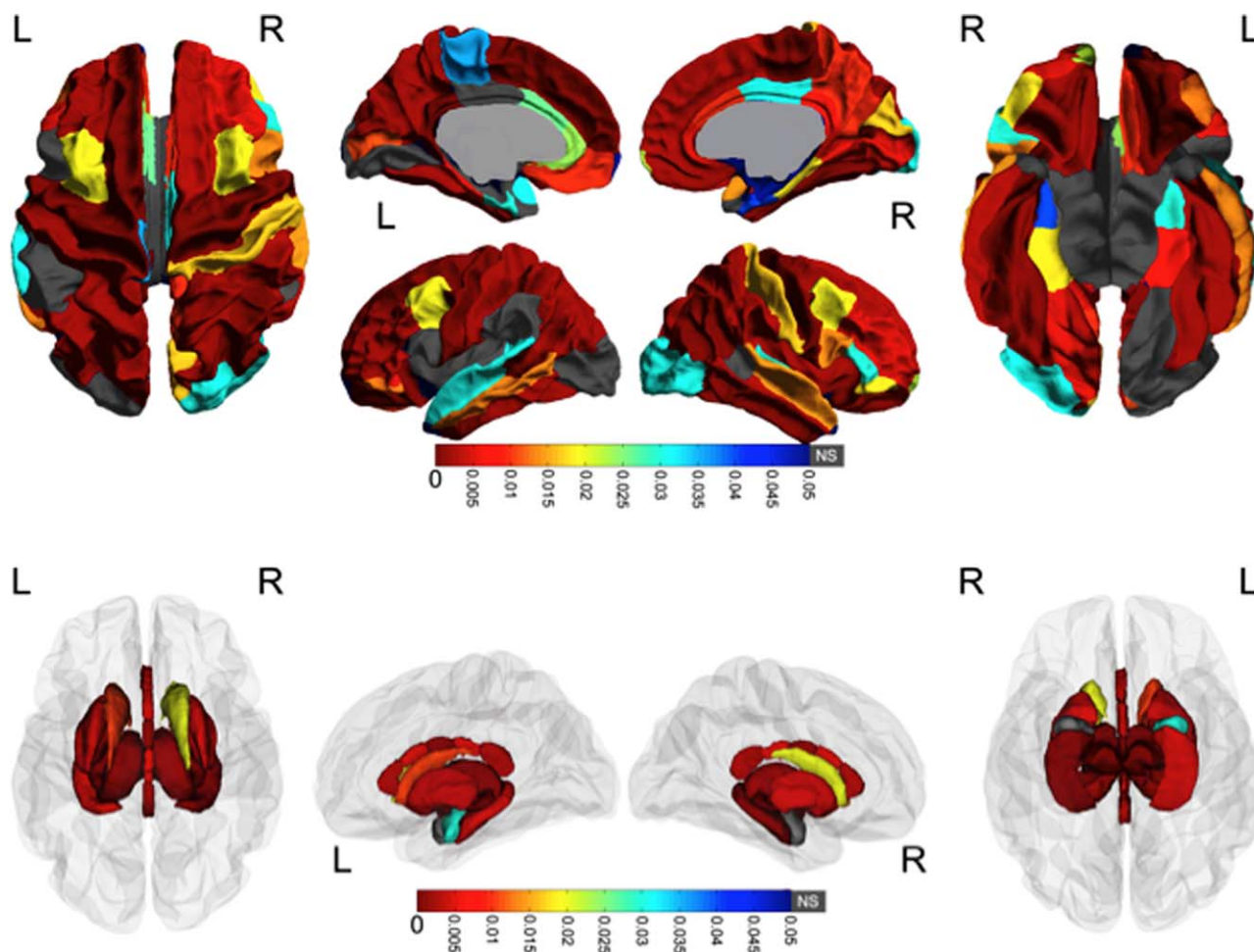


Figure 1.

Group differences in volume. White matter and subcortical gray matter regions with significant volume differences between groups are colored according to their FDR-corrected significance values. Gray indicates no significant group differences. Note the widespread volume differences; in all cases subjects with PAE had smaller volumes than control subjects. [Color figure can be viewed in the online issue, which is available at wileyonlinelibrary.com.]

that differences remain consistent across the age range (7–18 years). In most regions, group differences were stable over time. Hence, while those with PAE had smaller volumes than typically developing children across the age range, they nonetheless had *similar rates of change* in most brain regions. Brain-behavior relationships were also observed, showing that children and adolescents with PAE and worse behavior or executive function tended to have larger volume increases over time than those with fewer problems, particularly in frontal and temporal-parietal regions. Finally, brain-behavior correlations in controls were generally not significant.

The reduced white matter and subcortical gray matter volumes observed in children and adolescents with PAE is in good agreement with previous cross-sectional [Archibald et al., 2001a; Astley et al., 2009; Nardelli et al., 2011; Rous-

sotte et al., 2012] and longitudinal studies [Gautam et al., 2014a; Treit et al., 2013]. However, our findings of similar development trajectories contrast some previous studies showing differential development of cortical gray matter volume [Lebel et al., 2012a] and white matter microstructure [Treit et al., 2013] in children with PAE compared to typically developing control subjects. Nonetheless, recent studies on white matter volume have demonstrated similar trajectories in exposed and unexposed individuals [Gautam et al., 2014a] and subcortical volume differences [Treit et al., 2013]. Given that development patterns are known to vary between white matter volume, gray matter volume, and white matter microstructure (anisotropy and diffusivity as measured by DTI), it is not surprising that children with PAE may demonstrate altered maturation in some areas and not others [Giedd et al., 1999; Sowell et al., 2004; Lebel

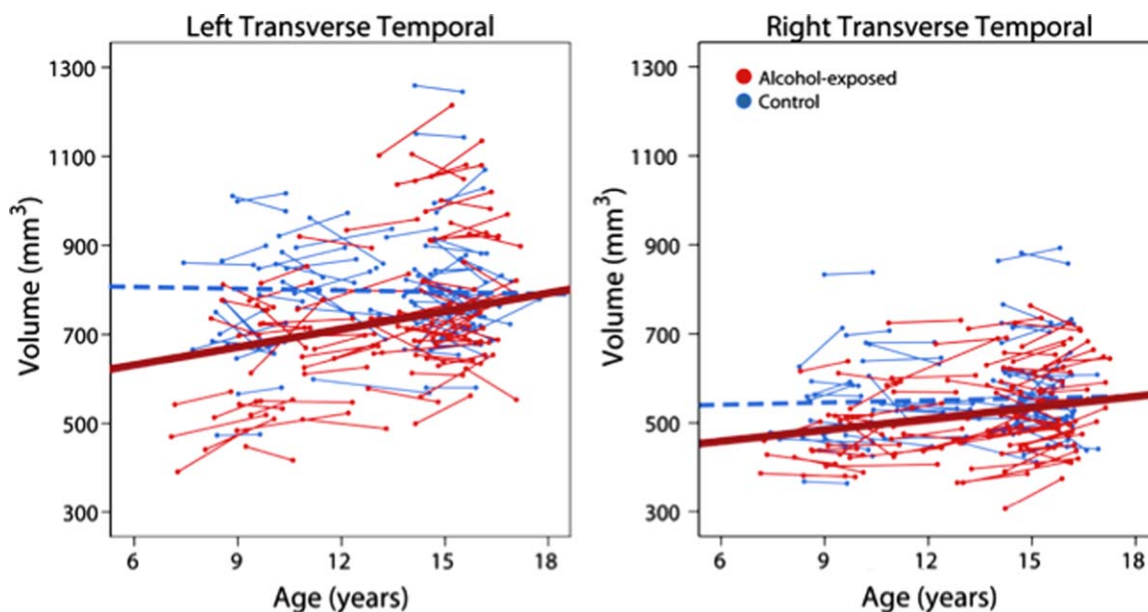


Figure 2.

Age-related changes in transverse temporal white matter regions. The only areas with significant age-group interactions were the bilateral transverse temporal regions, in which alcohol-exposed subjects (red) showed significant volume increases over time, but no significant changes were noted in control subjects

(blue). The best fit line for control subjects (dotted blue line) was not significant and is just shown for reference. [Color figure can be viewed in the online issue, which is available at wileyonlinelibrary.com.]

and Beaulieu, 2011]. It is also possible that future studies with larger sample sizes and/or more imaging time points may reveal subtle developmental abnormalities in white matter volume. However, the current results suggest that these would at least be smaller in magnitude than the developmental abnormalities observed in cortical gray matter volume and white matter anisotropy and diffusivity.

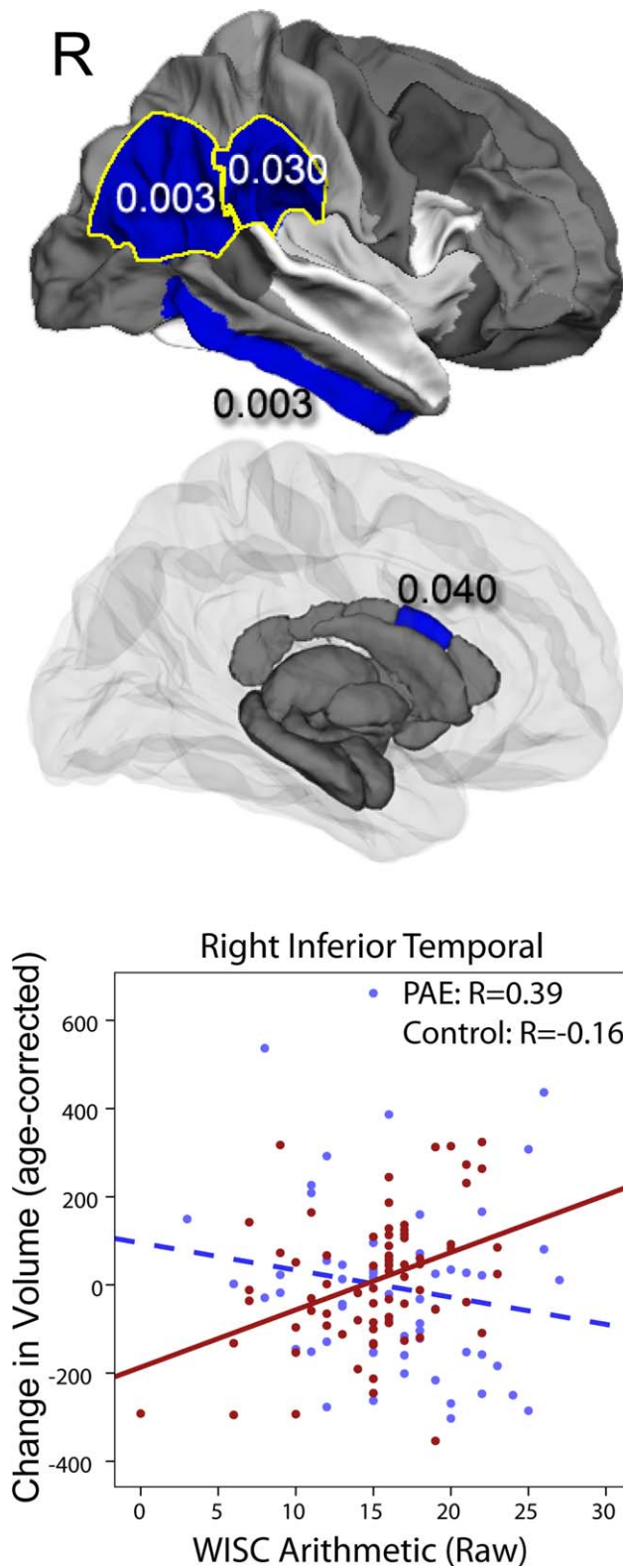
The only region that did show differences in development trajectory was the transverse temporal area, a region involved in auditory processing. These differences were significant bilaterally, suggesting some consistency. In these regions, volume increases occurred at a slower rate in PAE subjects compared to controls, but both trajectories were linear (see Fig. 1). Children with PAE are more likely to have auditory processing difficulties than nonexposed children [Stephen et al., 2012], which may be related to abnormal white matter development in this area. However, children with PAE also have deficits in numerous other domains that affect brain areas that were not affected in this study, so more work needs to be done to understand these results.

Participants with PAE had poorer arithmetic scores at baseline than control subjects. This finding is well-documented in previous studies, and mathematical ability tends to be more impaired than other cognitive domains in individuals with PAE [Howell et al., 2006]. A previous study demonstrated correlations between white matter microstructure and mathematical ability in the parietal

and cerebellar regions of children with PAE [Lebel et al., 2010], though control subjects were not examined in this study. Here, we note that in temporal and parietal regions, arithmetic scores were positively associated with volume changes in subjects with PAE, but there were no significant associations in control subjects. Thus, while arithmetic ability may be related to brain structure in these areas at single time points, it appears that it is associated with developmental changes in temporal and parietal regions in children and youth with PAE.

Subjects with PAE also had more attention and conduct problems than control subjects, and we report a trend toward worse executive function ($P=0.08$) in this sample. Results showed that for behavioral measures, significant interactions were localized predominantly in the frontal and parietal areas. In subjects with PAE, higher rates of behavioral dysfunction predicted larger white matter volume increases over time, while control subjects generally showed the opposite, with higher rates of dysfunction related to smaller increases of white matter volume. These interactions in the areas important for planning, attention, and overall executive function abilities reveal that contributions of brain structure to cognition and behavior are unequal, and variable between groups.

Given the observed group differences in relation to brain-structure and behavior, it is possible that children and youth with PAE use brain resources differently and/



or less efficiently than control subjects. Nonetheless, due to the increased behavioral and attentional problems as evidenced by the BRIEF and CBCL batteries, there are indications that despite increased volume in these regions over time, the cognitive function of these regions might still be impaired. This is because we cannot be certain about the underlying cellular differences that could be present in those with PAE. This theory is consistent with another study from our group on children with PAE, some of whom were also studied here [Gautam et al., 2014a], showing group differences in white matter-executive function relationships between PAE and control subjects. In that study, we found that PAE children show differential relationships with age and executive function development compared with control subjects. Children with PAE showed significant cognitive improvements with age in relation to increased white matter volume, while control subjects showed no such relationships suggesting that cognitive functions may rely more heavily on white matter development in those with PAE than in control children.

Results correlating brain volume change with executive and cognitive function are also encouraging, at least from the view of neurodevelopment. As exploratory in nature, the secondary analyses would not survive a FDR correction. Nonetheless, the positive relationships between arithmetic ability and white matter volume changes in PAE suggest that behavioral interventions or remediation in arithmetic skills to facilitate environmental exposures (which, in turn is likely to impact neurodevelopment) could lead to a general improvement of their arithmetic ability. Support for this view comes from previous interventions that have been conducted on children with PAE, showing that math interventions not only immediately improve standardized scores on CBCL and arithmetic tasks, but that these positive effects last at least 6–12 months *after* the intervention has stopped [Coles et al., 2009; Kableet al., 2007]. These studies are particularly interesting, in that the intervention for a cognitive task also improved behavior. As no neuroimaging data were collected on the participants during the trial, the brain structural changes accompanying the cognitive and behavioral improvements are unknown. However, given our current results, it is possible to speculate that some brain structural alterations could have occurred to lead to improved performances in the PAE participants in the study. Our findings of similar white matter volume change

Figure 3.

Significant group-score interactions are shown for white matter and subcortical gray matter volumes for arithmetic scores. In several brain regions, baseline cognitive and/or behavioral scores were predictive of volume changes over time, and these relationships were different in subjects with PAE than control subjects (interactions all $P<0.05$). PAE subjects with higher scores demonstrated larger volume increases over time (control subjects showed no significant relationships). [Color figure can be viewed in the online issue, which is available at wileyonlinelibrary.com.]

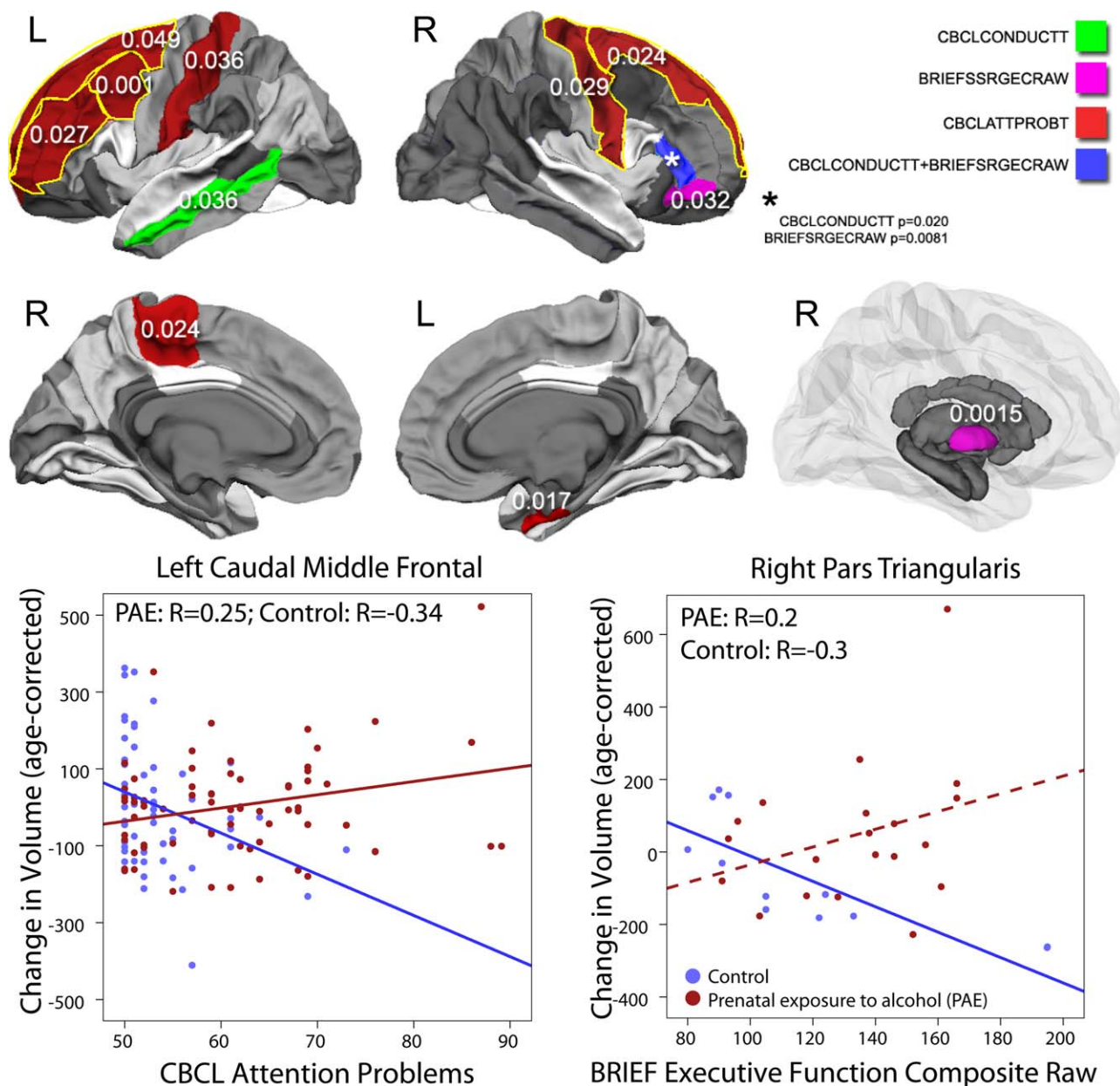


Figure 4.

Significant group-score interactions are shown for white matter and subcortical gray matter volumes. In several brain regions, baseline cognitive and/or behavioral scores were predictive of volume changes over time, and these relationships were different in subjects with PAE than control subjects (interactions all $P<0.05$). For behavioral scores in most cases, PAE subjects with worse behavioral problems demonstrated larger volume

increases over time, while relationships in control subjects were opposite (worse behavior problems associated with smaller volume increases) or nonsignificant. Scatter plots are shown for select regions as examples; dotted lines indicate relationships which were not significant within that group. [Color figure can be viewed in the online issue, which is available at wileyonlinelibrary.com.]

rates and recent findings of significant positive relationships with executive function change [Gautam et al., 2014a] supports the view of these structures being crucial for improved performance over time. Given that these

results would not survive multiple comparison correction, larger studies and longitudinal follow-up of cognitive function of PAE children will be needed to investigate this issue further.

Limitations

This study has several limitations. First, as is typical of many studies of PAE, detailed alcohol consumption information was not available in PAE cases where biological relatives were not available for interviews. Nonetheless, all participants were identified according to the Institute of Medicine criteria, under which confirmed alcohol exposure is not required for FASD related diagnosis if dysmorphic facial features are identified. Second, although the group differences in brain volumes passed FDR corrections for multiple comparisons, the correlations between volume change in age and cognitive and behavioral change did not pass further multiple-comparison corrections. Another limitation of this study is the narrow range of behavioral scores in control subjects, as none had significant behavior or executive function problems. This limits our power to detect correlations and mandates caution in drawing conclusions within the control group. However, the wide range of scores in subjects with PAE makes those results more robust and more conclusive. Another limitation is the presence of confounding variables common to most studies of PAE. For instance, fathers of children with PAE often also drink more than fathers of control children [May et al., 2005]. Mothers of children with PAE are also more likely to have lower education and lower income [May et al., 2008]. Such indicators of poor socioeconomic status are independently correlated with poorer cognitive function in later life [Gale et al., 2004; Adler and Rehkopf, 2008] and cannot be easily partialled out in our study. Finally, although we had neuroimaging data for two time points, behavioral data were only collected at Time 1 and, therefore, we could only assess how baseline neurobehavior scores correlated with change in brain structures. Future studies with behavioral data at multiple time points will be able to assess how structural brain changes might be related to behavioral change over time.

CONCLUSIONS

We demonstrate that the smaller volumes in children with PAE persist across childhood and adolescence, suggesting similar development trajectories and showing that these volume abnormalities do not worsen over time. This may be encouraging in that there may not be a critical period for white matter development in PAE, and interventions could be equally effective at any age. Finally, brain-behavior relationships indicated that PAE subjects with worse behavior or executive function tended to have larger volume increases over time in frontal and temporal-parietal regions than those with fewer problems, suggesting that children and youth with PAE may use brain resources differently than control subjects, even though volumetric developmental trajectories are similar.

ACKNOWLEDGMENTS

Additional information about CIFASD can be found at www.cifasd.org.

REFERENCES

- Adler NE, Rehkopf DH (2008): U.S. disparities in health: Descriptions, causes, and mechanisms. *Annu Rev Public Health* 29: 235–252.
- Archibald SL, Fennema-Notestine C, Gamst A, Riley EP, Mattson SN, Jernigan TL (2001a): Brain dysmorphology in individuals with severe prenatal alcohol exposure. *Dev Med Child Neurol* 43:148–154.
- Astley SJ, Clarren SK (2000): Diagnosing the full spectrum of fetal alcohol-exposed individuals: Introducing the 4-Digit diagnostic code. *Alcohol Alcohol* 35:400–410.
- Astley SJ, Aylward EH, Olson HC, Kerns K, Brooks A, Coggins TE, Davies J, Dorn S, Gendler B, Jirikowic T, Kraegel P, Maravilla K, and Richards T (2009): Magnetic resonance imaging outcomes from a comprehensive magnetic resonance study of children with fetal alcohol spectrum disorders. *Alcohol Clin Exp Res* 33:1671–1689.
- Bhatara V, Loudenberg R, Ellis R (2006): Association of attention deficit hyperactivity disorder and gestational alcohol exposure: An exploratory study. *J Atten Disord* 9:515–522.
- Coles CD, Kable JA, Taddeo E (2009): Math performance and behavior problems in children affected by prenatal alcohol exposure: intervention and follow-up. *J Dev Behav Pediatr* 30: 7–15.
- Crowley TJ, Dalwani MS, Mikulich-Gilbertson SK, Du YP, Lejuez CW, Raymond KM, Banich MT (2010): Risky decisions and their consequences: Neural processing by boys with Antisocial Substance Disorder. *PLoS One* 5:e12835.
- Fairchild G, Hagan CC, Walsh ND, Passamonti L, Calder AJ, Goodyer IM (2013): Brain structure abnormalities in adolescent girls with conduct disorder. *J Child Psychol Psychiatry* 54:86–95.
- Gale CR, O'Callaghan FJ, Godfrey KM, Law CM, Martyn CN (2004): Critical periods of brain growth and cognitive function in children. *Brain* 127:321–329.
- Gautam P, Cherbuin N, Sachdev PS, Wen W, Anstey KJ (2011): Relationships between cognitive function and frontal grey matter volumes and thickness in middle aged and early old-aged adults: The PATH through life study *NeuroImage* 55: 845–855.
- Gautam P, Nuñez SC, Narr KL, Kan EC, Sowell ER (2014a): Effects of prenatal alcohol exposure on the development of white matter volume and change in executive function. *Neuroimage Clin* 5:19–27.
- Gautam P, Nuñez SC, Narr KL, Mattson SN, May PA, Adnams CM, Riley EP, Jones KL, Kan EC, Sowell ER (2014b): Developmental trajectories for visuo-spatial attention are altered by prenatal alcohol exposure: A longitudinal fMRI study (in press). doi:10.1093/cercor/bhu162.
- Giedd JN, Blumenthal J, Jeffries NO, Castellanos FX, Liu H, Zijdenbos A, Paus T, Evans AC, Rapoport JL (1999): Brain development during childhood and adolescence: A longitudinal MRI study. *Nat Neurosci* 2:861–863.
- Goldschmidt L, Richardson GA, Stoffer DS, Geva D, Day NL (1996): Prenatal alcohol exposure and academic achievement at age six: A nonlinear fit. *Alcohol Clin Exp Res* 20:763–770.

- Howell KK, Lynch ME, Platzman KA, Smith GH, Coles CD (2006): Prenatal alcohol exposure and ability, academic achievement, and school functioning in adolescence: A longitudinal follow-up. *J Pediatr Psychol* 31:116–126.
- Hoyme HE, May PA, Kalberg WO, Kodituwakku P, Gossage JP, Trujillo PM, Buckley DG, Miller JH, Aragon AS, Khaole N, Viljoen DL, Jones KL, Robinson LK (2005): A practical clinical approach to diagnosis of fetal alcohol spectrum disorders: Clarification of the 1996 institute of medicine criteria. *Pediatrics* 115:39–47.
- Jones KL, Smith DW (1973): Recognition of the fetal alcohol syndrome in early infancy. *Lancet* 302:999–1001.
- Kable JA, Coles CD, Taddeo E (2007): Socio-cognitive habilitation using the math interactive learning experience program for alcohol-affected children. *Alcohol Clin Exp Res* 31:1425–1434.
- Lebel C, Beaulieu C (2008): Brain diffusion abnormalities in children with fetal alcohol spectrum disorder. *Alcohol Clin Exp Res* 32:1732–1740.
- Lebel C, Rasmussen C, Wyper K, Andrew G, Beaulieu C (2010): Brain microstructure is related to math ability in children with fetal alcohol spectrum disorder. *Alcohol Clin Exp Res* 34:354–363.
- Lebel C, Rasmussen C, Wyper K, Andrew G, Beaulieu C (2011): Longitudinal development of human brain wiring continues from childhood into adulthood. *J Neurosci* 31:10937–10947.
- Lebel C, Rasmussen C, Wyper K, Walker L, Andrew G, Yager J, Beaulieu C (2012a): A longitudinal study of the long-term consequences of drinking during pregnancy: Heavy in utero alcohol exposure disrupts the normal processes of brain development. *J Neurosci* 32:15243–15251.
- Lee KT, Mattson SN, Riley EP (2004): Classifying children with heavy prenatal alcohol exposure using measures of attention. *J Int Neuropsychol Soc* 10:271–277.
- Marsh AA, Finger EC, Fowler KA, Adalio CJ, Jurkowitz IT, Schechter JC, Pine DS, Decety J, Blair RJ (2013): Empathic responsiveness in amygdala and anterior cingulate cortex in youths with psychopathic traits. *J Child Psychol Psychiatry* 54:900–910.
- Mattson SN, Calarco KE, Lang AR (2006): Focused and shifting attention in children with heavy prenatal alcohol exposure. *Neuropsychology* 20:361–369.
- Mattson SN, Crocker N, Nguyen TT (2010): Collaborative initiative on fetal alcohol spectrum disorders: Methodology of clinical projects. *Alcohol* 44:635–641.
- Mattson SN, Crocker N, Nguyen TT (2011): Fetal alcohol spectrum disorders: Neuropsychological and behavioral features. *Neuropsychol Rev* 21:81–101.
- May PA, Gossage JP, Brooke LE, Snell CL, Marais AS, Hendricks LS, Croxford JA, Viljoen DL (2005): Maternal risk factors for fetal alcohol syndrome in the Western cape province of South Africa: A population-based study. *Am J Public Health* 95:1190–1199.
- May PA, Gossage JP, Marais A-S, Hendricks LS, Snell CL, Tabachnick BG, Stellavato C, Buckley DG, Brooke LE, Viljoen DL (2008): Maternal risk factors for fetal alcohol syndrome and partial fetal alcohol syndrome in South Africa: A third study. *Alcohol Clin Exp Res* 32:738–753.
- Nardelli A, Lebel C, Rasmussen C, Andrew G, Beaulieu C (2011): Extensive deep gray matter volume reductions in children and adolescents with fetal alcohol spectrum disorders. *Alcohol Clin Exp Res* 35:1404–1417.
- Reuter M, Fischl B (2011): Avoiding asymmetry-induced bias in longitudinal image processing. *Neuroimage* 57:19–21.
- Reuter M, Rosas HD, Fischl B (2010): Highly accurate inverse consistent registration: A robust approach. *NeuroImage* 53:1181–1196.
- Riikonen RS, Nokelainen P, Valkonen K, Kolehmainen AI, Kumpulainen KI, Könönen M, Vanninen R-LS, Kuikka JT (2005): Deep serotonergic and dopaminergic structures in fetal alcoholic syndrome: A study with nor- 18 F-CIT-single-photon emission computed tomography and magnetic resonance imaging volumetry. *Biol Psychiatry* 57:1565–1572.
- Riley EP, Mattson SN, Sowell ER, Jernigan TL, Sobel DF, Jones KL (1995): Abnormalities of the corpus callosum in children prenatally exposed to alcohol. *Alcohol Clin Exp Res* 19:1198–1202.
- Roussotte F, Soderberg L, Sowell E (2010): Structural, metabolic, and functional brain abnormalities as a result of prenatal exposure to drugs of abuse: Evidence from neuroimaging. *Neuropsychol Rev* 20:376–397.
- Roussotte FF, Sulik KK, Mattson SN, Riley EP, Jones KL, Adnams CM, May PA, O'Connor MJ, Narr KL, Sowell ER (2012): Regional brain volume reductions relate to facial dysmorphology and neurocognitive function in fetal alcohol spectrum disorders. *Hum Brain Mapp* 33:920–937.
- Sampson PD, Streissguth AP, Bookstein FL, Barr HM (1997): Incidence of fetal alcohol syndrome and prevalence of alcohol-related neurodevelopmental disorder. *Teratology* 56:317–326.
- Sampson PD, Streissguth AP, Bookstein FL, Little RE, Clarren SK, Dehaene P, Hanson JW, Graham JM, Jr. (2000): On categorizations in analyses of alcohol teratogenesis. *Environ Health Perspect* 108(Suppl 3):421–428.
- Santhanam P, Li Z, Hu X, Lynch ME, Coles CD (2009): Effects of prenatal alcohol exposure on brain activation during an arithmetic task: An fMRI study. *Alcohol: Clin Exp Res* 33:1901–1908.
- Sowell ER, Mattson SN, Kan E, Thompson PM, Riley EP, Toga AW (2001): Mapping callosal morphology and cognitive correlates: Effects of heavy prenatal alcohol exposure. *Neurology* 57:235–244.
- Sowell ER, Mattson SN, Thompson PM, Jernigan TL, Riley EP, Toga AW (2001): Voxel-based morphometric analyses of the brain in children and adolescents prenatally exposed to alcohol. *NeuroReport* 12:515–523.
- Sowell ER, Thompson PM, Leonard CM, Welcome SE, Kan E, Toga AW (2002): Regional brain shape abnormalities persist into adolescence after heavy prenatal alcohol exposure. *Cereb Cortex* 12:856–865.
- Sowell ER, Thompson PM, Mattson SN, Tessner KD, Jernigan TL, Riley EP, Toga AW (2004): Longitudinal mapping of cortical thickness and brain growth in normal children. *J Neurosci* 24:8223–8231.
- Sowell ER, Thompson PM, Mattson SN, Tessner KD, Jernigan TL, Riley EP, Toga AW (2008): Abnormal cortical thickness and brain-behavior correlation patterns in individuals with heavy prenatal alcohol exposure. *Cereb Cortex* 18:136–144.
- Stephen JM, Kodituwakku PW, Kodituwakku EL, Romero L, Peters AM, Sharadamma NM, Caprihan A, Coffman BA (2012): Delays in auditory processing identified in preschool children with FASD. *Alcohol Clin Exp Res* 36:1720–1727.
- Stevens SA, Nash K, Fantus E, Nulman I, Rovet J, Koren G (2013): Towards identifying a characteristic neuropsychological profile for fetal alcohol spectrum disorders. 2. Specific caregiver- and teacher-rating. *J Popul Ther Clin Pharmacol* 20:e53–e62.
- Streissguth AP, Barr HM, Olson HC, Sampson PD, Bookstein FL, Burgess DM (1994): Drinking during pregnancy decreases

- word attack and arithmetic scores on standardized tests: Adolescent data from a population-based prospective study. *Alcohol Clin Exp Res* 18:248–254.
- Treit S, Lebel C, Baugh L, Rasmussen C, Andrew G, Beaulieu C (2013): Longitudinal MRI reveals altered trajectory of brain development during childhood and adolescence in fetal alcohol spectrum disorders. *J Neurosci* 33:10098–10109.
- Willoughby KA, Sheard ED, Nash K, Rovet J (2008): Effects of prenatal alcohol exposure on hippocampal volume, verbal learning, and verbal and spatial recall in late childhood. *J Int Neuropsychol Soc* 14:1022–1033.
- Wozniak J, Muetzel R (2011): What does diffusion tensor imaging reveal about the brain and cognition in fetal alcohol spectrum disorders? *Neuropsychol Rev* 21:133–147.
- Xia S, Li X, Kimball AE, Kelly MS, Lesser I, Branch C (2012): Thalamic shape and connectivity abnormalities in children with attention-deficit/hyperactivity disorder. *Psychiatry Res* 204:161–167.
- Yang Y, Phillips OR, Kan E, Sulik KK, Mattson SN, Riley EP, Jones KL, Adnams CM, May PA, O'Connor MJ, Narr KL and Sowell ER (2011a): Callosal thickness reductions relate to facial dysmorphology in fetal alcohol spectrum disorders. *Alcohol Clin Exp Res* 36:798–806.
- Yang Y, Roussotte F, Kan E, Sulik KK, Mattson SN, Riley EP, Jones KL, Adnams CM, May PA, O'Connor MJ, Narr KL and Sowell ER (2011b): Abnormal cortical thickness alterations in fetal alcohol spectrum disorders and their relationships with facial dysmorphology. *Cereb Cortex* 22:1170–1179.