

# UCSF

## UC San Francisco Previously Published Works

### Title

High-Frequency Repetitive Magnetic Stimulation Enhances the Expression of Brain-Derived Neurotrophic Factor Through Activation of Ca<sup>2+</sup>-Calmodulin-Dependent Protein Kinase II-cAMP-Response Element-Binding Protein Pathway.

### Permalink

<https://escholarship.org/uc/item/7kd644vv>

### Authors

Baek, Ahreum

Park, Eun

Kim, Soo

et al.

### Publication Date

2018

### DOI

10.3389/fneur.2018.00285

Peer reviewed



# High-Frequency Repetitive Magnetic Stimulation Enhances the Expression of Brain-Derived Neurotrophic Factor Through Activation of Ca<sup>2+</sup>-Calmodulin-Dependent Protein Kinase II-cAMP-Response Element-Binding Protein Pathway

## OPEN ACCESS

### Edited by:

Vassilis E. Koliatsos,  
Johns Hopkins University,  
United States

### Reviewed by:

Francisco Capani,  
University of Buenos Aires,  
Argentina  
Eric Peter Thelin,  
University of Cambridge,  
United Kingdom

### \*Correspondence:

Sung Hoon Kim  
kimrehab@yonsei.ac.kr;  
Sung-Rae Cho  
srcho918@yuhs.ac

<sup>†</sup>These authors have contributed  
equally to this work.

### Specialty section:

This article was submitted to  
Neurotrauma,  
a section of the journal  
Frontiers in Neurology

Received: 08 October 2017

Accepted: 12 April 2018

Published: 07 May 2018

### Citation:

Baek A, Park EJ, Kim SY, Nam B-G,  
Kim JH, Jun SW, Kim SH and  
Cho S-R (2018) High-Frequency  
Repetitive Magnetic Stimulation  
Enhances the Expression of  
Brain-Derived Neurotrophic Factor  
Through Activation of Ca<sup>2+</sup>-  
Calmodulin-Dependent Protein  
Kinase II-cAMP-Response  
Element-Binding Protein Pathway.  
*Front. Neurol.* 9:285.  
doi: 10.3389/fneur.2018.00285

Ahreum Baek<sup>1,2†</sup>, Eun Jee Park<sup>3†</sup>, Soo Yeon Kim<sup>4</sup>, Bae-Geun Nam<sup>2,5</sup>, Ji Hyun Kim<sup>1</sup>,  
Sang Woo Jun<sup>6</sup>, Sung Hoon Kim<sup>1\*</sup> and Sung-Rae Cho<sup>2,5,7,8,9\*</sup>

<sup>1</sup>Department of Rehabilitation Medicine, Yonsei University Wonju College of Medicine, Wonju, South Korea, <sup>2</sup>Department and Research Institute of Rehabilitation Medicine, Yonsei University College of Medicine, Seoul, South Korea, <sup>3</sup>Department of Rehabilitation Medicine, The Graduate School Yonsei University Wonju College of Medicine, Wonju, South Korea, <sup>4</sup>Department of Medicine, Yonsei University Wonju College of Medicine, Wonju, South Korea, <sup>5</sup>Graduate Program of NanoScience and Technology, Yonsei University, Seoul, South Korea, <sup>6</sup>Department of Biomedical Clinical Engineering, Yonsei University Wonju College of Medicine, Wonju, South Korea, <sup>7</sup>Brain Korea 21 PLUS Project for Medical Science, Yonsei University, Seoul, South Korea, <sup>8</sup>Yonsei Stem Cell Center, Avison Biomedical Research Center, Yonsei University College of Medicine, Seoul, South Korea, <sup>9</sup>Rehabilitation Institute of Neuromuscular Disease, Yonsei University College of Medicine, Seoul, South Korea

Repetitive transcranial magnetic stimulation (rTMS) can be used in various neurological disorders. However, neurobiological mechanism of rTMS is not well known. Therefore, in this study, we examined the global gene expression patterns depending on different frequencies of repetitive magnetic stimulation (rMS) in both undifferentiated and differentiated Neuro-2a cells to generate a comprehensive view of the biological mechanisms. The Neuro-2a cells were randomly divided into three groups—the sham (no active stimulation) group, the low-frequency (0.5 Hz stimulation) group, and high-frequency (10 Hz stimulation) group—and were stimulated 10 min for 3 days. The low- and high-frequency groups of rMS on Neuro-2a cells were characterized by transcriptome array. Differentially expressed genes were analyzed using the Database of Annotation Visualization and Integrated Discovery program, which yielded a Kyoto Encyclopedia of Genes and Genomes pathway, Amphetamine addiction pathway, circadian entrainment pathway, long-term potentiation (LTP) pathway, neurotrophin signaling pathway, prolactin signaling pathway, and cholinergic synapse pathway were significantly enriched in high-frequency group compared with low-frequency group. Among these pathways, LTP pathway is relevant to rMS, thus the genes that were involved in LTP pathway were validated by quantitative real-time polymerase chain reaction and western blotting. The expression of glutamate ionotropic receptor *N*-methyl D-aspartate 1, calmodulin-dependent protein kinase II (CaMKII)  $\delta$ , and CaMKII $\alpha$  was increased, and the expression of CaMKII $\gamma$  was

decreased in high-frequency group. These genes can activate the calcium ( $\text{Ca}^{2+}$ )–CaMKII–cAMP-response element-binding protein (CREB) pathway. Furthermore, high-frequency rMS induced phosphorylation of CREB, brain-derived neurotrophic factor (BDNF) transcription *via* activation of  $\text{Ca}^{2+}$ –CaMKII–CREB pathway. In conclusion, high-frequency rMS enhances the expression of BDNF by activating  $\text{Ca}^{2+}$ –CaMKII–CREB pathway in the Neuro-2a cells. These findings may help clarify further therapeutic mechanisms of rTMS.

**Keywords:** repetitive magnetic stimulation, low-frequency, high-frequency,  $\text{Ca}^{2+}$ –calmodulin-dependent protein kinase II–cAMP-response element-binding protein pathway, brain-derived neurotrophic factor, Neuro-2a cells

## INTRODUCTION

Transcranial magnetic stimulation (TMS) is a non-invasive tool that allows electrical stimulation of the nervous system and could be an ideal treatment tool due to its ability to modify brain plasticity (1). TMS can generate an electric current in the central nervous system by making short 100  $\mu\text{s}$  biphasic electromagnetic pulse (2, 3). When given at regular frequencies, it is termed repetitive transcranial magnetic stimulation (rTMS) (3).

Several studies reported that changes in rTMS frequency and stimulation patterns resulted in varying long-term effects (4, 5). High-frequency stimulation ( $>3$  Hz) stimulated cortical excitability and generally resulted in an effect that share similar aspects with long-term potentiation (LTP). In comparison, low frequency stimulation ( $\leq 1$  Hz) reduced cortical excitability and induced a reduction in synaptic efficiency which were similar to long-term depression (4, 5). Various stimulation parameters such as intensity, frequency, overall patterns of stimulation, and periods determine the functional effects of rTMS on cortical excitability (6, 7). However, the neural mechanisms related with various stimulation parameters of rTMS remain unclear.

rTMS is a safe, painless, and non-invasive brain stimulation method that has been recently gaining focus as a neurorehabilitation tool with therapeutic ability (8). rTMS has been used in various neurological diseases to provide relief and reduce chronic pain (9–13). Motor symptoms in patients with Parkinson's disease and dystonia can be ameliorated by high-frequency rTMS treatment (14–16). In stroke patients, high-frequency rTMS can increase ipsilesional cortical excitability to improve paretic limb function (17–19). Also, high-frequency rTMS may be a promising effective and safe modality in frontal cortex for Alzheimer's disease (20). Furthermore, in amyotrophic lateral sclerosis, the brain-derived neurotrophic factor (BDNF) production may play a role by regulating with neuronal activity by rTMS in primary motor cortex (21). However, the precise therapeutic mechanisms of rTMS are still unknown.

In this study, we aimed to investigate the global gene expression patterns depending on different frequencies of repetitive magnetic stimulation (rMS) in both undifferentiated and differentiated Neuro-2a cells with multiple properties of neurons (22–25) to provide a comprehensive view of the neurobiological mechanisms. Achieving our goals, transcriptome analysis, to quantify the expression levels of individual transcripts, and possible comparison (26, 27), were conducted to compare the

effect of high-frequency and low-frequency rMS in the Neuro-2a cells. Differentially expressed genes (DEGs) of high-frequency compared with low-frequency rMS were analyzed with bioinformatics tool to identify relevant cellular signaling pathways and examine the expression level to elucidate the neurobiological mechanisms.

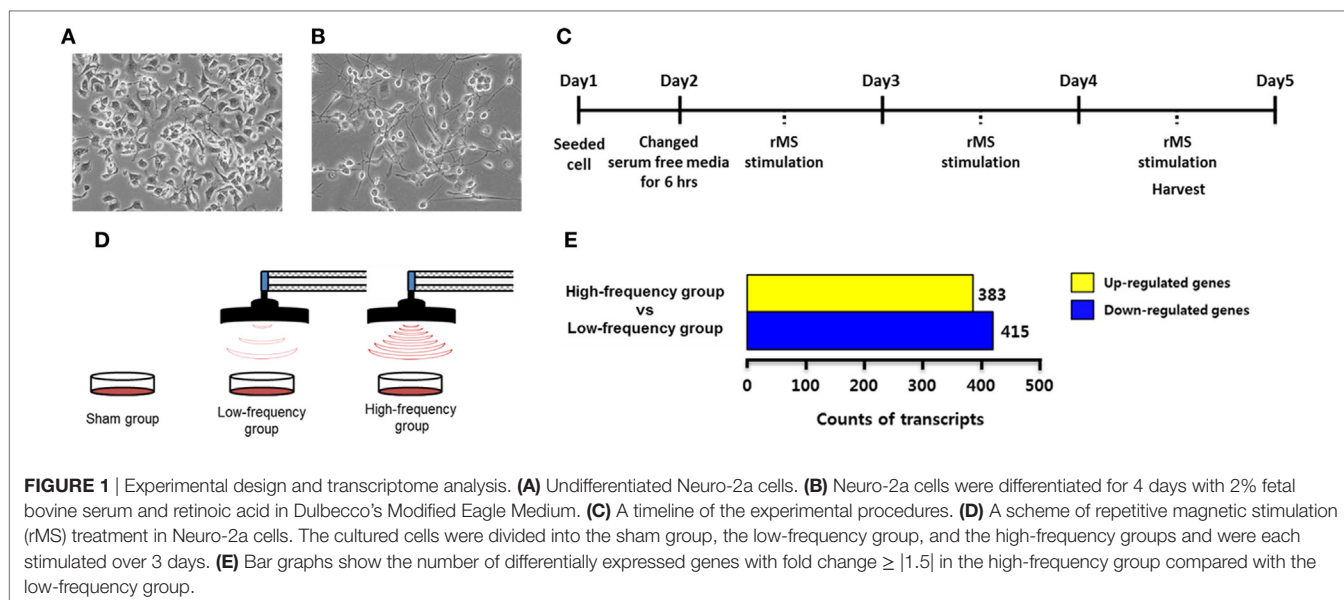
## MATERIALS AND METHODS

### Cell Cultures

Neuro-2a cells were obtained from American Type Culture Collection (Manassas, VA, USA). Neuro-2a cells were maintained in Dulbecco's Modified Eagle Medium (DMEM; Hyclone, Logan, UT, USA) with 10% fetal bovine serum (FBS; Serum Source International, Charlotte, NC, USA) and 1% penicillin–streptomycin solution (Gibco, Rockville, MD, USA) in a humidified atmosphere with 5%  $\text{CO}_2$  and 95% air at 37°C (**Figure 1A**). It has been reported that Neuro-2a cells are differentiated by retinoic acid (RA) treatment (28–30). According to our previous study (25), differentiated Neuro-2a cells were maintained in DMEM with 2% FBS and 20  $\mu\text{M}$  of RA for 4 days in a humidified atmosphere with 5%  $\text{CO}_2$  and 95% air at 37°C (**Figure 1B**). Cells were observed under microscope and photographed using a Nikon Eclipse TS100 microscope (Nikon, Melville, NY, USA). Cells were harvested at 80% confluence using 0.25% trypsin–EDTA (Gibco). Cells were seeded on new plates and the growth medium was replaced every 2–3 days.

### Repetitive Magnetic Stimulation

In each experiment, Neuro-2a cells were rendered quiescent for 6 h by the addition of DMEM without FBS in a humidified atmosphere with 5%  $\text{CO}_2$  and 95% air at 37°C. Then, the cells were replaced by the growth medium and stimulated with customized rMS (Bicon-1000Pro, Mcube Technology, Seoul, Korea) as indicated in our previous studies (3, 25). To clarify the design of the experiment, the distance between the center of the magnetic coil (70 mm diameter) and the culture dish was approximately 1.0 cm. Cultured cells were divided into three groups ( $N = 5$  dishes/group) as follows: the sham group (exposed to rMS but no active stimulation for 10 min), the low-frequency group (0.5 Hz stimulation for 10 min), and the high-frequency group (10 Hz stimulation for 10 min). All groups were stimulated over the course of 3 days for a duration of 10 min/day. After 3 days of stimulation, cells were harvested with 0.25% trypsin–EDTA



(Gibco) as described earlier. The experimental scheme is shown in **Figures 1C,D**.

## RNA Isolation

By using TRIzol reagent (Invitrogen Life Technologies, Carlsbad, CA, USA), RNA was isolated from the cell pellets by following the manufacturer's instructions. The Nanodrop spectrophotometer (Thermo Fisher Scientific, Waltham, MA, USA) was used to confirm the quality and quantity of isolated RNA.

## Transcriptome Array and Data Analysis

RNA sequencing between high-frequency group and low-frequency group in Neuro-2a cells was performed by Macrogen Inc. (Seoul, Korea) to provide a comparison. The procedures have been detailed previously (31–34).

The lists of significant differentially expressed genes (DEGs) for the high-frequency group compared with low-frequency group were submitted to the Database for Annotation, Visualization, and Integrated Discovery (DAVID v6.8; <http://david.abcc.ncifcrf.gov/>) via the Kyoto Encyclopedia of Genes and Genomes (KEGG) pathways analysis with fold change  $\geq |1.5|$ .

## Quantitative Real-Time Reverse Transcription Polymerase Chain Reaction (qRT-PCR)

To validate transcriptome analysis results, qRT-PCR was conducted with the sham groups in Neuro-2a cells as control. Following the manufacturer's instruction for ReverTra Ace<sup>®</sup> qPCR RT Master Mix with gDNA Remover (Toyobo, Osaka, Japan), RNA were reverse-transcribed into cDNA. In a StepOnePlus Real-Time PCR System (Applied Biosystems, Foster City, CA, USA), the mRNA expression for genes of interest was validated with qPCR-BIO SyGreen Mix Hi-ROX (PCR BIOSYSTEMS, London, UK). Gene expression analysis was conducted by the  $2^{-\Delta\Delta C_t}$  method (35). Primers used for qRT-PCR are listed in **Table 1**.

**TABLE 1** | Primers used for qRT-PCR.

Gene symbol	Forward primer (5' → 3')	Reverse primer (5' → 3')
<i>GRIN1</i>	CAG GAT CGT CAG GCA AGA CA	CCA AGC AAC TGA GGG TCC TT
<i>CaMKII<math>\delta</math></i>	TGC ACC TGG TAG GGG ACG AT	GAA TAC AGG GTG GCT TGA TGG GT
<i>CaMKII<math>\alpha</math></i>	TGC TGC TCT TTC TCA CGC TG	TCA ATG GTG GTG TTG GTG CT
<i>CaMKII<math>\gamma</math></i>	TTG TGC GTC TCC ATG ACA GT	TGT CAT GCT GGT GGA TGT GG
<i>BDNF</i>	GGG TCA CAG CGG CAG ATA AA	ATT GCG AGT TCC AGT GCC TT
<i>GAPDH</i>	CAT CAC TGC CAC CCA GAA GAC TG	ATG CCA GTG AGC TTC CCG TTC AG

*GRIN1*, glutamate receptor ionotropic N-methyl-D-aspartate 1; *CaMKII $\delta$* , calcium/calmodulin-dependent protein kinase type II subunit delta; *CaMKII $\alpha$* , calcium/calmodulin-dependent protein kinase II alpha; *CaMKII $\gamma$* , calcium/calmodulin-dependent protein kinase II gamma; *BDNF*, brain-derived neurotrophic factor; *GAPDH*, glyceraldehyde-3-phosphate dehydrogenase.

## Western Blot Analysis

To confirm the protein expression of calmodulin-dependent protein kinase II (CaMKII), phospho-cAMP response element binding protein (p-CREB), brain-derived neurotrophic factor (BDNF), and ACTIN, western blot was conducted with the sham group in Neuro-2a cells. To isolated total protein, cell pellets were homogenized and dissolved using radioimmunoprecipitation assay buffer (Thermo Scientific) containing protease and phosphatase inhibitors (Abcam, Cambridge, MA, USA). Total proteins were quantified by the Quick Start<sup>™</sup> Bradford 1× Dye Reagent (BIO-RAD, Hercules, CA, USA). The samples were denatured and separated by 4–12% Bis-Tris gels (Invitrogen, Eugene, OR, USA) in 1× NuPage MES SDS Running Buffer (Invitrogen). Proteins were transferred onto a polyvinylidene difluoride membrane (Invitrogen) by 20% methanol (Merck, Darmstadt, Germany) in NuPage Transfer

Buffer (Invitrogen). Membranes were blocked and then incubated overnight at 4°C with anti-CaMKII (1:1,000 dilution, Abcam), anti-p-CREB (1:1,000 dilution, Santa Cruz Biotechnology), anti-BDNF (1:1,000 dilution, Abcam), and anti-ACTIN (1:5,000 dilution, Santacruz) antibodies. The next day, blots were washed three times with 1× TBS plus Tween 20 (Biosesang, Sungnam, Korea) and incubated at room temperature for 1 h with horseradish peroxidase-conjugated secondary antibodies (1:4,000 dilution, Santa Cruz). After the blots were washed three times with TBS plus Tween 20 (Biosesang), proteins were visualized with the following enhanced chemiluminescence detection systems: Amersham™ ECL™ Western Blotting Detection Reagent (GE Healthcare, Little Chalfont, UK) and West-Q Pico ECL solution (GenDEPOT, Houston, TX, USA). Quantification of relative protein expression using Multi Gauge (v3.0) software (Fujifilm, Tokyo, Japan).

## Statistical Analysis

All data were expressed as means ± standard error of the mean (SEM), and all experiments were repeated at least three times with three technical replicates in each group. Statistical analyses were conducted using the Statistical Package for the Social Sciences (SPSS) for Windows version 23.0, IBM Corporation (Armonk, NY, USA). Data were analyzed with one-way analysis of variance, followed by Bonferroni's post hoc test and with statistically significant *p*-value < 0.05.

## RESULTS

### Gene Expression Profile by Transcriptome Analysis

To identify DEGs associated with the high-frequency group compared with the low-frequency group, we conducted transcriptome analysis by RNA sequencing. A total of 21,567

transcripts were differentially expressed from the high-frequency group compared with the low-frequency group as shown in Table S1 in Supplementary Material. In the high-frequency group, 383 transcripts were 1.5-fold higher and 415 transcripts were 1.5-fold lower compared with the low-frequency group (**Figure 1E**; Table S2 in Supplementary Material).

### Enriched KEGG Pathway Analysis

DEGs of the high-frequency group compared with the low-frequency group were classified based on KEGG pathways using the DAVID Gene Functional Classification Tool. Statistically significant enriched KEGG pathways specific to the high-frequency group compared with the low-frequency group are presented in **Table 2** (*p* < 0.01).

According to the previous studies, among several pathways, mmu04720; LTP pathway was modulated by rTMS (4, 8, 36, 37). Glutamate ionotropic receptor *N*-methyl *D*-aspartate 1 (GRIN1), CaMKIIδ, ribosomal protein S6 kinase polypeptide 1, and CaMKIIα were significantly upregulated in the LTP pathway. In addition, CaMKIIγ, protein phosphatase 3 catalytic subunit alpha, protein kinase cAMP dependent catalytic alpha, and voltage-dependent L-type calcium channel subunit alpha-1C were significantly downregulated in the LTP pathway. Therefore, we focused on the genes that are involved in the LTP pathway.

### High-Frequency rMS Facilitates Ca<sup>2+</sup>-CaMKII-CREB Pathway

qRT-PCR and western blot were conducted with the sham groups in Neuro-2a cells as control to validate the RNA sequencing results which identified the expression of the genes that were involved in the LTP pathway. According to the results of qRT-PCR, there were no significant changes in the low-frequency group compared with the sham group in undifferentiated Neuro-2a cells (**Figure 2A**). When the high-frequency group

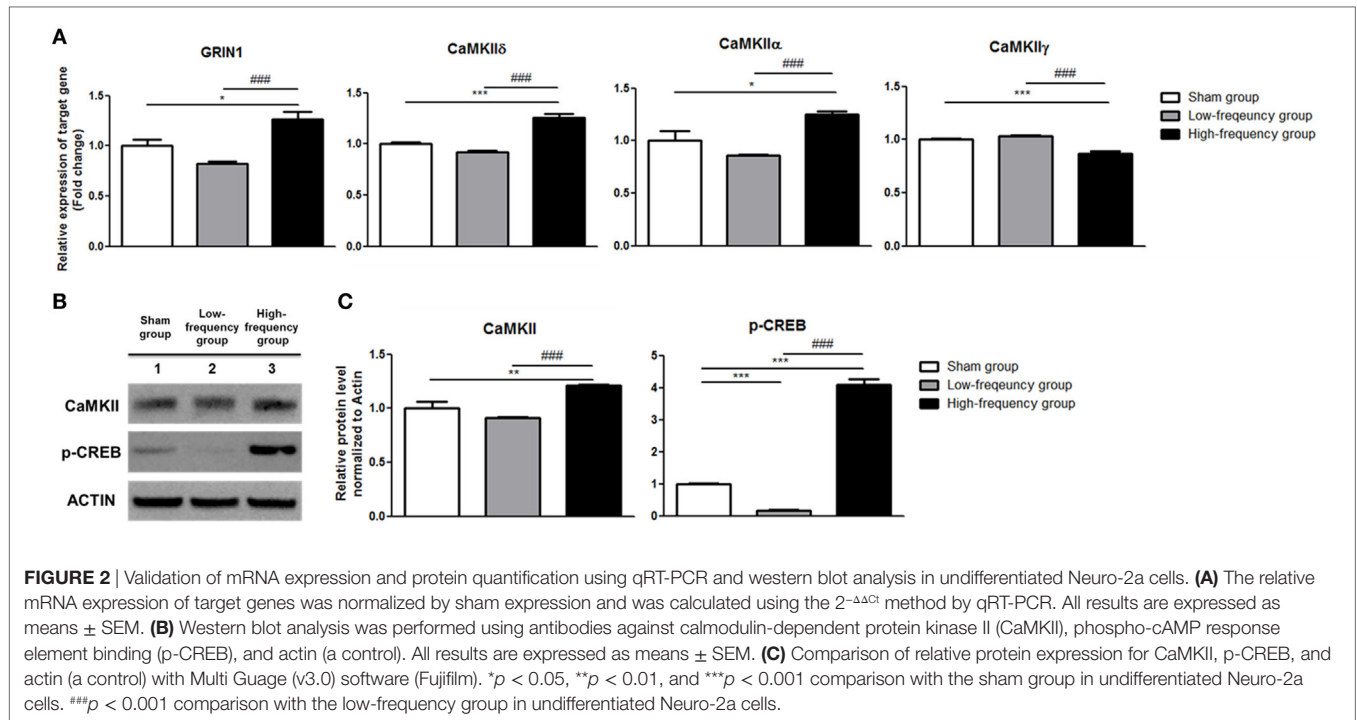
**TABLE 2** | The enriched Kyoto Encyclopedia of Genes and Genomes pathways in high-frequency group compared with low-frequency group.

Term	Count	%	<i>p</i> -Value	Genes
mmu05031: Amphetamine addiction	9	0.0092	0.0009	FOS, CAMK2G, GRIN1, CAMK2D, PRKACA, FOSB, PPP3CA, CACNA1C, CAMK2A
mmu04713: Circadian entrainment	10	0.0102	0.0027	FOS, GNGT2, CAMK2G, GRIN1, CAMK2D, PER1, PRKACA, PER3, CACNA1C, CAMK2A
<b>mmu04720: Long-term potentiation</b>	<b>8</b>	<b>0.0082</b>	<b>0.0036</b>	<b>RPS6KA1, CAMK2G, GRIN1, CAMK2D, PRKACA, PPP3CA, CACNA1C, CAMK2A</b>
mmu04722: Neurotrophin signaling pathway	11	0.0113	0.0037	PDPK1, RPS6KA1, MAPK14, CAMK2G, PIK3CD, CAMK2D, SH2B2, SH2B1, MAPK7, MAP2K7, CAMK2A
mmu04917: Prolactin signaling pathway	8	0.0082	0.0063	FOS, SOCS2, MAPK14, SOCS1, PIK3CD, JAK2, STAT1, STAT3
mmu04725: Cholinergic synapse	10	0.0102	0.0070	FOS, ACHE, GNGT2, CAMK2G, PIK3CD, CAMK2D, PRKACA, JAK2, CACNA1C, CAMK2A

LTP pathway is relevant to rMS treatment and is shown in a bold fonts.

These pathways are statistically significant (*p*-value < 0.01).

FOS, *FBJ* osteosarcoma oncogene; CAMK2G, calcium/calmodulin-dependent protein kinase II gamma; GRIN1, glutamate receptor ionotropic *N*-methyl-*D*-aspartate 1; CAMK2D, calcium/calmodulin-dependent protein kinase type II subunit delta; PRKACA, protein kinase, cAMP dependent, catalytic, alpha; FOSB, *FBJ* osteosarcoma oncogene B; PPP3CA, protein phosphatase 3, catalytic subunit, alpha isoform; CACNA1C, voltage-dependent L-type calcium channel subunit alpha-1C; CAMK2A, calcium/calmodulin-dependent protein kinase II alpha; GNGT2, guanine nucleotide binding protein (G protein), gamma transducing activity polypeptide 2; PER1, period circadian clock 1; PER3, period circadian protein homolog 3; RPS6KA1, ribosomal protein S6 kinase polypeptide 1; ribosomal protein S6 kinase polypeptide 1; PDPK1, 3-phosphoinositide dependent protein kinase 1; MAPK14, mitogen-activated protein kinase 14; PIK3CD, phosphatidylinositol 3-kinase catalytic delta polypeptide; SH2B2, SH2B adaptor protein 2; SH2B1, SH2B adapter protein 1 isoform 3; MAPK7, mitogen-activated protein kinase 7; MAP2K7, dual specificity mitogen-activated protein kinase kinase 7; SOCS2, suppressor of cytokine signaling 2; SOCS1, suppressor of cytokine signaling 1; JAK2, Janus kinase 2; STAT1, signal transducer and activator of transcription 1; STAT3, signal transducer and activator of transcription 3; ACHE, acetylcholinesterase precursor.



was compared with the sham group in undifferentiated Neuro-2a cells, the expression of GRIN1, CaMKII $\delta$ , and CaMKII $\alpha$  was significantly increased while CaMKII $\gamma$  expression was a significantly decreased (Figure 2A). Likewise, when the high-frequency group was compared with the low-frequency group in undifferentiated Neuro-2a cells, the expression of GRIN1, CaMKII $\delta$ , and CaMKII $\alpha$  was also significantly increased while CaMKII $\gamma$  expression was significantly decreased (Figure 2A).

In the same manner, there were not any significant changes in the low-frequency group compared with the sham group in differentiated Neuro-2a cells (Figure 3A). The expression of GRIN1, CaMKII $\delta$ , and CaMKII $\alpha$  was significantly increased in the high-frequency group compared with the sham group or low-frequency group in differentiated Neuro-2a cells (Figure 3A). On the other hand, CaMKII $\gamma$  expression was a significantly decreased in the high-frequency group compared with either the sham or the low-frequency group in differentiated Neuro-2a cells (Figure 3A).

GRIN1, CaMKII $\delta$ , CaMKII $\alpha$ , and CaMKII $\gamma$  are involved in  $Ca^{2+}$ -CaMKII signaling pathway (38, 39). Especially CaMKII activation induced CREB phosphorylation (40, 41). We hypothesized that these genes, which were involved in  $Ca^{2+}$ -CaMKII-CREB pathway, induce p-CREB by the activation of  $Ca^{2+}$ -CaMKII-CREB pathway with high-frequency rMS.

Therefore, CaMKII and p-CREB protein expression levels were identified by western blot analysis. The protein expression of the CaMKII and p-CREB was significantly increased in the high-frequency group when compared with either the sham or the low-frequency group in undifferentiated Neuro-2a cells, respectively (Figures 2B,C). Furthermore, when the high-frequency group was compared with the low-frequency group in undifferentiated

Neuro-2a cells, the protein expression was statistically increased (Figures 2B,C).

Likewise, the protein expression of CaMKII and p-CREB was significantly increased in the high-frequency group compared with either the sham or the low-frequency group in differentiated Neuro-2a cells, respectively (Figures 3B,C).

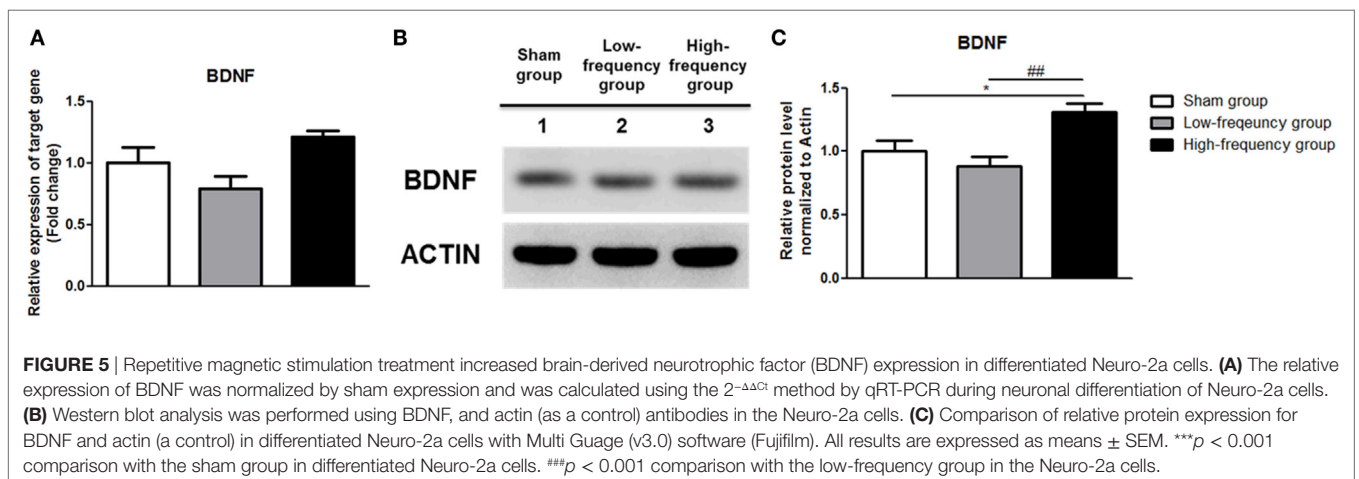
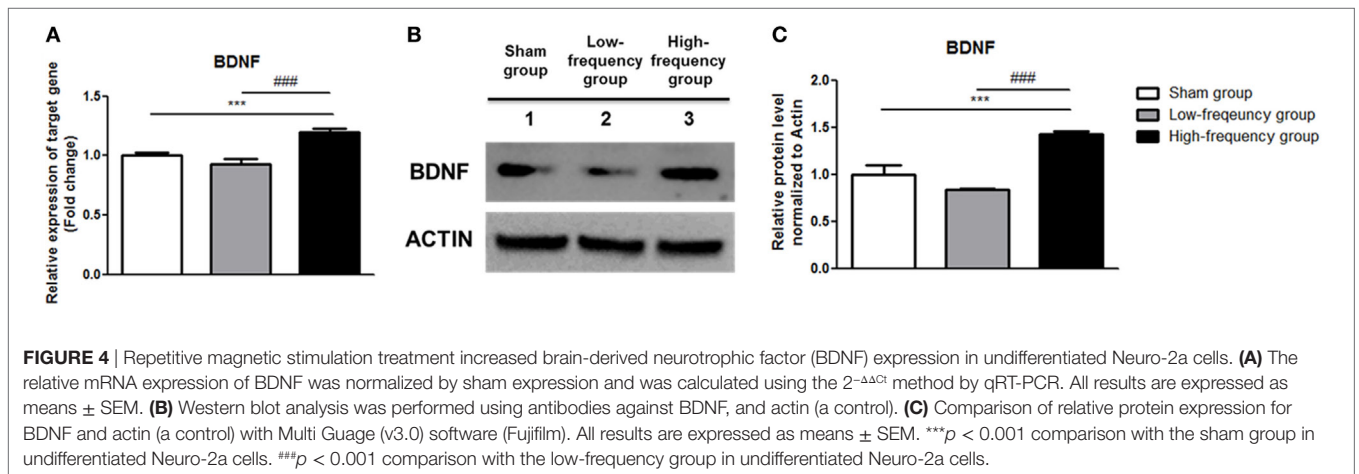
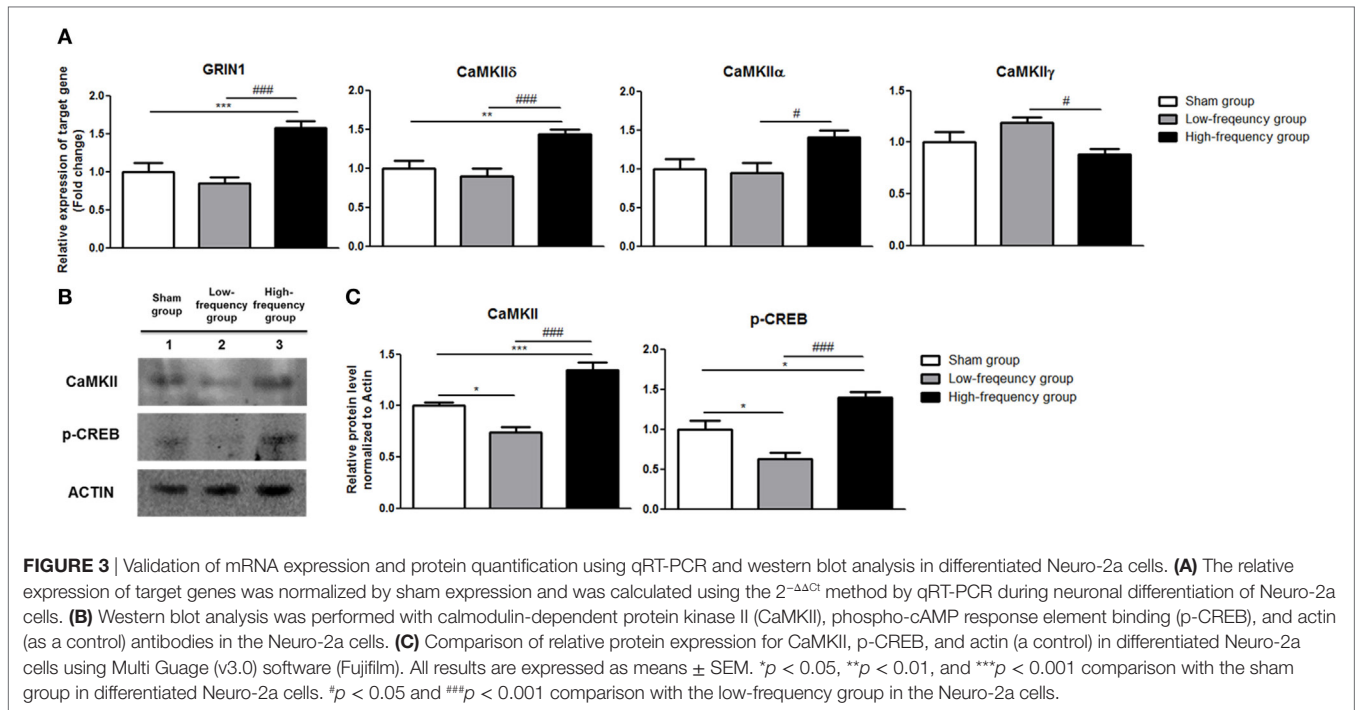
These data suggest that  $Ca^{2+}$ -CaMKII-CREB pathway is activated by high-frequency rMS in both undifferentiated and differentiated Neuro-2a cells.

## High-Frequency rMS Facilitates BDNF Expression

Recently, it was reported that the  $Ca^{2+}$ -CaMKII-CREB pathway plays a vital role in BDNF transcription (41, 42). Therefore, we confirmed BDNF expression by qRT-PCR and western blotting. In the low-frequency group as compared with the sham group, mRNA and protein expression of BDNF were decreased in undifferentiated Neuro-2a cells (Figure 4). However, when the high-frequency group was compared with the sham group in undifferentiated Neuro-2a cells, mRNA and protein expression of BDNF significantly increased (Figure 4). Furthermore, when the high-frequency group was compared with the low-frequency group, mRNA and protein expression of BDNF were also significantly increased in undifferentiated Neuro-2a cells (Figure 4).

In the same manner, the mRNA and protein expression of BDNF was significantly increased in the high-frequency group compared with either the sham or the low-frequency group in differentiated Neuro-2a cells, respectively (Figure 5).

Taken together, BDNF expression is increased by  $Ca^{2+}$ -CaMKII-CREB pathway activation in both undifferentiated and differentiated Neuro-2a cells.



## DISCUSSION

It has been established that different frequencies for rTMS techniques can produce different modulatory effects (5). In this study, we examined global gene expression patterns by different frequencies of rMS in both undifferentiated and differentiated Neuro-2a cells.

In this study, LTP pathway is a significant pathway which is enriched in high-frequency group compared with low-frequency group in undifferentiated Neuro-2a cells. With its ability to endure functional enhancement of synaptic connections, or structural modification of neuronal connectivity, LTP pathway is a critical process for learning and memory (43) and has been relevant in rTMS treatment (4, 8, 36, 37). In the previous study, LTP pathway was significantly increased in the high-frequency stimulation compared with the sham (44) and had long-lasting increase in synaptic efficiency as a result of the high-frequency stimulation of afferent fibers (36). In this study, we validated that the genes such as GRIN1, CaMKII $\delta$ , CaMKII $\alpha$ , and CaMKII $\gamma$  were involved in LTP pathway by high-frequency rMS in both undifferentiated and differentiated Neuro-2a cells.

GRIN1, one of the subunits of the *N*-methyl-D-aspartate receptors (NMDARs), which were part of a large multiprotein complex (45), was upregulated in the high-frequency rMS in both undifferentiated and differentiated Neuro-2a cells. NMDARs, which are part of a large multiprotein complex, possess a large part in normal development and function, including synaptic plasticity, neural development, learning, and memory (46). NMDAR activity mediates CaMKII translocation to the postsynaptic density where it is maintained through a direct interaction with the C-terminal tail of the NMDAR complex (47). CaMKII is a calmodulin-dependent protein kinase that plays a crucial role in learning and memory by mediating a wide variety of intercellular responses (48, 49). There are four CaMKII isoform termed as CaMKII $\alpha$ , CaMKII $\beta$ , CaMKII $\delta$ , and CaMKII $\gamma$  (50) that regulate calcium channel activity and gene expression (51–53). CaMKII $\alpha$ , one of the major part of CaMKII, plays a critical role in hippocampal LTP and spatial learning (54, 55). CaMKII $\gamma$  is regarded one of the inhibitors of CaMKII functions (56). It also can regulate inhibitory synapses to lead long-term inhibitory synaptic plasticity (57). Taken together, Ca<sup>2+</sup>–CaMKII pathway is increased by high-frequency rMS in both undifferentiated and differentiated Neuro-2a cells.

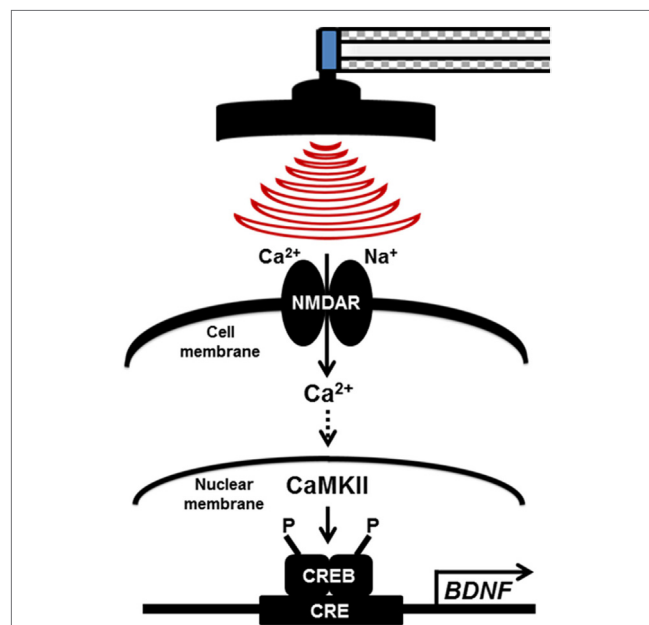
Multiple signaling cascades are related in phosphorylation of CREB, including the activation of CaMKII. CaMKII has been implicated strongly in memory formation of various species as a key regulator of gene expression (41, 58–61). CREB cannot only be activated by various kinases through electrical activity, neurotransmitters, hormones, and neurotrophins, but also can promote the expression of many cAMP response elements (CREs) containing genes (62). In this study, we suggest that Ca<sup>2+</sup>–CaMKII–CREB pathway is activated by high-frequency rMS in both undifferentiated and differentiated Neuro-2a cells.

In the previous study, BDNF transcription and neurite outgrowth were increased through Ca<sup>2+</sup>–CaMKII–CREB pathway by ES in cultured rat postnatal dorsal root ganglion neurons (41). BDNF promotes neuronal survival through both inactivation of

the elements that take role in cell death machinery and activation of the transcription factor, CREB (63). In addition, BDNF is a crucial protein which aids the development, differentiation, maintenance, and plasticity of brain function (64). It has been proven through several experiments that by enhancing the expression of glutamate neurotransmitters and BDNF, rTMS has the ability to regulate neuroplasticity (5, 65–67). In this study, BDNF expression is up-regulated *via* Ca<sup>2+</sup>–CaMKII–CREB pathway activation through high-frequency rMS in both undifferentiated and differentiated Neuro-2a cells.

Our finding suggests that the LTP pathway was confirmed to be a relevant enriched KEGG pathway by high-frequency rMS in Neuro-2a cells. In addition, high-frequency rMS activated the Ca<sup>2+</sup>–CaMKII–CREB signaling pathway, and the expression of p-CREB and BDNF was increased through the Ca<sup>2+</sup>–CaMKII–CREB signaling pathway in both undifferentiated and differentiated Neuro-2a cells (Figure 6).

There are several limitations in this study. Our data are focused on normal condition of undifferentiated and differentiated Neuro-2a cells, which are widely used in neurological and neurodegenerative disorders such as Alzheimer's disease (68, 69),



**FIGURE 6** | Potential therapeutic mechanisms for high-frequency repetitive magnetic stimulation (rMS) in both undifferentiated and differentiated Neuro-2a cells. The long-term potentiation pathway was confirmed to be an enriched relevant Kyoto Encyclopedia of Genes and Genomes pathway in high-frequency rMS stimulation in both undifferentiated and differentiated Neuro-2a cells. In addition, high-frequency rMS can activate the Ca<sup>2+</sup>–calmodulin-dependent protein kinase II (CaMKII)–cAMP-response element-binding protein (CREB) signaling pathway. In addition, phospho-CREB and brain-derived neurotrophic factor (BDNF) expression was increased *via* activation of the Ca<sup>2+</sup>–CaMKII–CREB signaling pathway in both undifferentiated and differentiated Neuro-2a cells. NMDAR, N-methyl-D-aspartate receptors; CaMKII, Ca<sup>2+</sup>–calmodulin-dependent protein kinase II; CREB, cAMP-response element-binding protein; CRE, cAMP-response element; BDNF, brain-derived neurotrophic factor.



Parkinson's disease (70, 71), and stroke (25, 72, 73). Therefore, in the further investigation, work on applying the mechanism, proved through this study, in various disease models to provide a cure for neurological and neurodegenerative disorders will be done. In addition to the application on various disease models, we plan to clarify the accurate therapeutic mechanism of rTMS through the application of this mechanism *in vivo* and on induced pluripotent stem cell/embryonic stem cells in the further studies to be done.

The findings in this study will provide a better understanding of the neurobiological mechanisms of neuroplasticity, through the usage of different frequencies of rTMS, and a basic information for clinical application. It will provide a comprehensive view of further therapeutic mechanisms of rTMS.

## AUTHOR CONTRIBUTIONS

AB contributed to study conception and design, collection, and/or assembly of data and manuscript writing. EJP contributed to collect and/or assembly of data and manuscript writing. SYK contributed to manuscript writing and English editing. B-GN, JHK, and SWJ contributed to collect and/or assembly of data.

## REFERENCES

- Kapoor A. Repetitive transcranial magnetic stimulation therapy for post-stroke non-fluent aphasia: a critical review. *Top Stroke Rehabil* (2017) 24(7):547–53. doi:10.1080/10749357.2017.1331417
- Muller-Dahlhaus F, Vlachos A. Unraveling the cellular and molecular mechanisms of repetitive magnetic stimulation. *Front Mol Neurosci* (2013) 6:50. doi:10.3389/fnmol.2013.00050
- Lee JY, Park HJ, Kim JH, Cho BP, Cho SR, Kim SH. Effects of low- and high-frequency repetitive magnetic stimulation on neuronal cell proliferation and growth factor expression: a preliminary report. *Neurosci Lett* (2015) 604:167–72. doi:10.1016/j.neulet.2015.07.038
- Gersner R, Kravetz E, Feil J, Pell G, Zangen A. Long-term effects of repetitive transcranial magnetic stimulation on markers for neuroplasticity: differential outcomes in anesthetized and awake animals. *J Neurosci* (2011) 31:7521–6. doi:10.1523/JNEUROSCI.6751-10.2011
- Luo J, Zheng H, Zhang L, Zhang Q, Li L, Pei Z, et al. High-frequency repetitive transcranial magnetic stimulation (rTMS) improves functional recovery by enhancing neurogenesis and activating BDNF/TrkB signaling in ischemic rats. *Int J Mol Sci* (2017) 18:455. doi:10.3390/ijms18020455
- Ma J, Zhang Z, Kang L, Geng D, Wang Y, Wang M, et al. Repetitive transcranial magnetic stimulation (rTMS) influences spatial cognition and modulates hippocampal structural synaptic plasticity in aging mice. *Exp Gerontol* (2014) 58:256–68. doi:10.1016/j.exger.2014.08.011
- Ljubisavljevic MR, Javid A, Oommen J, Parekh K, Nagelkerke N, Shehab S, et al. The effects of different repetitive transcranial magnetic stimulation (rTMS) protocols on cortical gene expression in a rat model of cerebral ischemic-reperfusion injury. *PLoS One* (2015) 10:e0139892. doi:10.1371/journal.pone.0139892
- Vlachos A, Muller-Dahlhaus F, Roskopp J, Lenz M, Ziemann U, Deller T. Repetitive magnetic stimulation induces functional and structural plasticity of excitatory postsynapses in mouse organotypic hippocampal slice cultures. *J Neurosci* (2012) 32:17514–23. doi:10.1523/JNEUROSCI.0409-12.2012
- Lefaucheur JP, Drouot X, Menard-Lefaucheur I, Zerah F, Bendib B, Cesaro P, et al. Neurogenic pain relief by repetitive transcranial magnetic stimulation depends on the origin and the site of pain. *J Neurol Neurosurg Psychiatry* (2004) 75:612–6. doi:10.1136/jnnp.2003.022236
- SHK and S-RC contributed to data analysis and interpretation, manuscript writing, and project supervision. All the authors read and approved the manuscript.

## ACKNOWLEDGMENTS

This research was supported by grants from the National Research Foundation of Korea (2015M3A9B4067068 and 2017R1D1A1B03028855) and the Korea Health Technology R&D Project through the Korea Health Industry Development Institute (KHIDI), funded by the Ministry of Health & Welfare, Republic of Korea (HI16C1012 and HI16C1176).

## SUPPLEMENTARY MATERIAL

The Supplementary Material for this article can be found online at <https://www.frontiersin.org/articles/10.3389/fneur.2018.00285/full#supplementary-material>.

**TABLE S1** | Raw data for 21,567 differentially expressed transcripts.

**TABLE S2** | Raw data for 798 differentially expressed transcripts.

- Leo RJ, Latif T. Repetitive transcranial magnetic stimulation (rTMS) in experimentally induced and chronic neuropathic pain: a review. *J Pain* (2007) 8:453–9. doi:10.1016/j.jpain.2007.01.009
- Lefaucheur JP, Andre-Obadia N, Antal A, Ayache SS, Baeken C, Benninger DH, et al. Evidence-based guidelines on the therapeutic use of repetitive transcranial magnetic stimulation (rTMS). *Clin Neurophysiol* (2014) 125:2150–206. doi:10.1016/j.clinph.2014.05.021
- Nardone R, Holler Y, Leis S, Holler P, Thon N, Thomschewski A, et al. Invasive and non-invasive brain stimulation for treatment of neuropathic pain in patients with spinal cord injury: a review. *J Spinal Cord Med* (2014) 37:19–31. doi:10.1179/2045772313Y.0000000140
- Lu H, Kobilio T, Robertson C, Tong S, Celnik P, Pelled G. Transcranial magnetic stimulation facilitates neurorehabilitation after pediatric traumatic brain injury. *Sci Rep* (2015) 5:14769. doi:10.1038/srep14769
- Arias-Carrion O. Basic mechanisms of rTMS: implications in Parkinson's disease. *Int Arch Med* (2008) 1:2. doi:10.1186/1755-7682-1-2
- Wu AD, Fregni F, Simon DK, Deblieck C, Pascual-Leone A. Noninvasive brain stimulation for Parkinson's disease and dystonia. *Neurotherapeutics* (2008) 5:345–61. doi:10.1016/j.nurt.2008.02.002
- Zamir O, Gunraj C, Ni Z, Mazzella F, Chen R. Effects of theta burst stimulation on motor cortex excitability in Parkinson's disease. *Neurophysiol Clin* (2012) 123:815–21. doi:10.1016/j.clinph.2011.07.051
- Khedr EM, Ahmed MA, Fathy N, Rothwell JC. Therapeutic trial of repetitive transcranial magnetic stimulation after acute ischemic stroke. *Neurology* (2005) 65:466–8. doi:10.1212/01.wnl.0000173067.84247.36
- Kim YH, You SH, Ko MH, Park JW, Lee KH, Jang SH, et al. Repetitive transcranial magnetic stimulation-induced corticomotor excitability and associated motor skill acquisition in chronic stroke. *Stroke* (2006) 37:1471–6. doi:10.1161/01.STR.0000221233.55497.51
- Brodie SM, Meehan S, Borich MR, Boyd LA. 5 Hz repetitive transcranial magnetic stimulation over the ipsilesional sensory cortex enhances motor learning after stroke. *Front Hum Neurosci* (2014) 8:143. doi:10.3389/fnhum.2014.00143
- Bentwich J, Dobronevsky E, Aichenbaum S, Shorer R, Peretz R, Khaigrekht M, et al. Beneficial effect of repetitive transcranial magnetic stimulation combined with cognitive training for the treatment of Alzheimer's disease: a proof of concept study. *J Neural Transm* (2011) 118:463–71. doi:10.1007/s00702-010-0578-1

21. Angelucci F, Oliviero A, Pilato F, Saturno E, Dileone M, Versace V, et al. Transcranial magnetic stimulation and BDNF plasma levels in amyotrophic lateral sclerosis. *Neuroreport* (2004) 15:717–20. doi:10.1097/00001756-200403220-00029
22. Cashman NR, Durham HD, Blusztajan JK, Oda K, Tabira T, Shaw IT, et al. Neuroblastoma X spinal-cord (Nsc) hybrid cell-lines resemble developing motor neurons. *Dev Dyn* (1992) 194:209–21. doi:10.1002/aja.1001940306
23. Pasinelli P, Borchelt DR, Houseweart MK, Cleveland DW, Brown RH. Caspase-1 is activated in neural cells and tissue with amyotrophic lateral sclerosis-associated mutations in copper-zinc superoxide dismutase. *Proc Natl Acad Sci U S A* (1998) 95:15763–8. doi:10.1073/pnas.95.26.15763
24. Tremblay RG, Sikorska M, Sandhu JK, Lanthier P, Ribocco-Lutkiewicz M, Bani-Yaghoob M. Differentiation of mouse Neuro 2A cells into dopamine neurons. *J Neurosci Methods* (2010) 186:60–7. doi:10.1016/j.jneumeth.2009.11.004
25. Baek A, Kim JH, Pyo S, Jung J-H, Park EJ, Kim SH, et al. The differential effects of repetitive magnetic stimulation in an in vitro neuronal model of ischemia/reperfusion injury. *Front Neurol* (2018) 9:50. doi:10.3389/fneur.2018.00050
26. Trapnell C, Roberts A, Goff L, Pertea G, Kim D, Kelley DR, et al. Differential gene and transcript expression analysis of RNA-seq experiments with TopHat and Cufflinks. *Nat Protoc* (2012) 7:562–78. doi:10.1038/nprot.2012.016
27. Rajkumar AP, Qvist P, Lazarus R, Lescai F, Ju J, Nyegaard M, et al. Experimental validation of methods for differential gene expression analysis and sample pooling in RNA-seq. *BMC Genomics* (2015) 16:548. doi:10.1186/s12864-015-1767-y
28. Tsuji S, Yamashita T, Tanaka M, Nagai Y. Synthetic Sialyl compounds as well as natural gangliosides induce neuritogenesis in a mouse neuro-blastoma cell-line (Neuro2a). *J Neurochem* (1988) 50:414–23. doi:10.1111/j.1471-4159.1988.tb02928.x
29. Riboni L, Prinetti A, Bassi R, Caminiti A, Tettamanti G. A mediator role of ceramide in the regulation of neuroblastoma Neuro2a cell-differentiation. *J Biol Chem* (1995) 270:26868–75. doi:10.1074/jbc.270.45.26868
30. Yanaka N, Nogusa Y, Fujioka Y, Yamashita Y, Kato N. Involvement of membrane protein GDE2 in retinoic acid-induced neurite formation in Neuro2A cells. *FEBS Lett* (2007) 581:712–8. doi:10.1016/j.febslet.2007.01.035
31. Kim MS, Yu JH, Lee MY, Kim AL, Jo MH, Kim M, et al. Differential expression of extracellular matrix and adhesion molecules in fetal-origin amniotic epithelial cells of preclimatic pregnancy. *PLoS One* (2016) 11:e0156038. doi:10.1371/journal.pone.0156038
32. Won YH, Lee MY, Choi YC, Ha Y, Kim H, Kim DY, et al. Elucidation of relevant neuroinflammation mechanisms using gene expression profiling in patients with amyotrophic lateral sclerosis. *PLoS One* (2016) 11:e0165290. doi:10.1371/journal.pone.0165290
33. Baek A, Cho SR, Kim SH. Elucidation of gene expression patterns in the brain after spinal cord injury. *Cell Transplant* (2017) 26:1286–300. doi:10.1177/0963689717715822
34. Baek A, Kim M, Kim SH, Cho SR, Kim HJ. Anti-inflammatory effect of DNA polymeric molecules in a cell model of osteoarthritis. *Inflammation* (2018) 41:677–88. doi:10.1007/s10753-017-0722-2
35. Livak KJ, Schmittgen TD. Analysis of relative gene expression data using real-time quantitative PCR and the 2<sup>(-T)</sup>(-Delta Delta C) method. *Methods* (2001) 25:402–8. doi:10.1006/meth.2001.1262
36. Ogiue-Ikeda M, Kawato S, Ueno S. The effect of repetitive transcranial magnetic stimulation on long-term potentiation in rat hippocampus depends on stimulus intensity. *Brain Res* (2003) 993:222–6. doi:10.1016/j.brainres.2003.09.009
37. Tang A, Thickbroom G, Rodger J. Repetitive transcranial magnetic stimulation of the brain: mechanisms from animal and experimental models. *Neuroscientist* (2015) 23:82–94. doi:10.1177/1073858415618897
38. Thalhammer A, Rudhard Y, Tigaret CM, Volynski KE, Rusakov DA, Schoepfer R. CaMKII translocation requires local NMDA receptor-mediated Ca<sup>2+</sup> signaling. *EMBO J* (2006) 25:5873–83. doi:10.1038/sj.emboj.7601420
39. Medvedev S, Stein P, Schultz RM. Specificity of calcium/calmodulin-dependent protein kinases in mouse egg activation. *Cell Cycle* (2014) 13:1482–8. doi:10.4161/cc.28432
40. Sheng M, Thompson MA, Greenberg ME. CREB: a Ca(2+)-regulated transcription factor phosphorylated by calmodulin-dependent kinases. *Science* (1991) 252:1427–30. doi:10.1126/science.1646483
41. Yan X, Liu J, Ye Z, Huang J, He F, Xiao W, et al. CaMKII-mediated CREB phosphorylation is involved in Ca<sup>2+</sup>-induced BDNF mRNA transcription and neurite outgrowth promoted by electrical stimulation. *PLoS One* (2016) 11:e0162784. doi:10.1371/journal.pone.0162784
42. Lonze BE, Ginty DD. Function and regulation of CREB family transcription factors in the nervous system. *Neuron* (2002) 35:605–23. doi:10.1016/S0896-6273(02)00828-0
43. Monte-Silva K, Kuo MF, Hessenthaler S, Fresnoza S, Liebetanz D, Paulus W, et al. Induction of late LTP-like plasticity in the human motor cortex by repeated non-invasive brain stimulation. *Brain Stimul* (2013) 6:424–32. doi:10.1016/j.brs.2012.04.011
44. Shang Y, Wang X, Shang X, Zhang H, Liu Z, Yin T, et al. Repetitive transcranial magnetic stimulation effectively facilitates spatial cognition and synaptic plasticity associated with increasing the levels of BDNF and synaptic proteins in Wistar rats. *Neurobiol Learn Mem* (2016) 134(Pt B):369–78. doi:10.1016/j.nlm.2016.08.016
45. Diana MC, Santoro ML, Xavier G, Santos CM, Spindola LN, Moretti PN, et al. Low expression of Gria1 and Grin1 glutamate receptors in the nucleus accumbens of spontaneously hypertensive rats (SHR). *Psychiatry Res* (2015) 229:690–4. doi:10.1016/j.psychres.2015.08.021
46. Chen W, Shieh C, Swanger SA, Tankovic A, Au M, Mcguire M, et al. GRIN1 mutation associated with intellectual disability alters NMDA receptor trafficking and function. *J Hum Genet* (2017) 62:589–97. doi:10.1038/jhg.2017.19
47. Bustos FJ, Jury N, Martinez P, Ampuero E, Campos M, Abarzua S, et al. NMDA receptor subunit composition controls dendritogenesis of hippocampal neurons through CAMKII, CREB-P, and H3K27ac. *J Cell Physiol* (2017) 232:3677–92. doi:10.1002/jcp.25843
48. Schulman H, Hanson PI. Multifunctional Ca<sup>2+</sup>/calmodulin-dependent protein-kinase. *Neurochem Res* (1993) 18:65–77. doi:10.1007/BF00966924
49. Kennedy MB. Signal transduction molecules at the glutamatergic postsynaptic membrane. *Brain Res Rev* (1998) 26:243–57. doi:10.1016/S0165-0173(97)00043-X
50. Saddouk FZ, Ginnan R, Singer HA. Ca<sup>2+</sup>/calmodulin-dependent protein kinase II in vascular smooth muscle. *Adv Pharmacol* (2017) 78:171–202. doi:10.1016/bs.apha.2016.08.003
51. Chin ER. Role of Ca<sup>2+</sup>/calmodulin-dependent kinases in skeletal muscle plasticity. *J Appl Physiol* (1985) (2005) 99:414–23. doi:10.1152/jappphysiol.00015.2005
52. Rose AJ, Alsted TJ, Kobberø JB, Richter EA. Regulation and function of Ca<sup>2+</sup>-calmodulin-dependent protein kinase II of fast-twitch rat skeletal muscle. *J Physiol* (2007) 580:993–1005. doi:10.1113/jphysiol.2006.127464
53. Tavi P, Westerblad H. The role of in vivo Ca<sup>2+</sup> signals acting on Ca<sup>2+</sup>-calmodulin-dependent proteins for skeletal muscle plasticity. *J Physiol* (2011) 589:5021–31. doi:10.1113/jphysiol.2011.212860
54. Soderling TR. CaM-kinases: modulators of synaptic plasticity. *Curr Opin Neurobiol* (2000) 10:375–80. doi:10.1016/S0959-4388(00)00090-8
55. Lisman J, Schulman H, Cline H. The molecular basis of CaMKII function in synaptic and behavioural memory. *Nat Rev Neurosci* (2002) 3:175–90. doi:10.1038/nrn753
56. Liu XB, Murray KD. Neuronal excitability and calcium/calmodulin-dependent protein kinase type II: location, location, location. *Epilepsia* (2012) 53(Suppl 1):45–52. doi:10.1111/j.1528-1167.2012.03474.x
57. Houston CM, He Q, Smart TG. CaMKII phosphorylation of the GABA(A) receptor: receptor subtype- and synapse-specific modulation. *J Physiol* (2009) 587:2115–25. doi:10.1113/jphysiol.2009.171603
58. Sun PQ, Enslin H, Myung PS, Maurer RA. Differential activation of Creb by Ca<sup>2+</sup>/calmodulin-dependent protein-kinases type-II and type-IV involves phosphorylation of a site that negatively regulates activity. *Genes Dev* (1994) 8:2527–39. doi:10.1101/gad.8.21.2527
59. Wu GY, Deisseroth K, Tsien RW. Activity-dependent CREB phosphorylation: convergence of a fast, sensitive calmodulin kinase pathway and a slow, less sensitive mitogen-activated protein kinase pathway. *Proc Natl Acad Sci U S A* (2001) 98:2808–13. doi:10.1073/pnas.051634198
60. Wu XL, McMurray CT. Calmodulin kinase II attenuation of gene transcription by preventing cAMP response element-binding protein (CREB) dimerization and binding of the CREB-binding protein. *J Biol Chem* (2001) 276:1735–41. doi:10.1074/jbc.M006727200
61. Ma H, Groth RD, Cohen SM, Emery JF, Li BX, Hoedt E, et al. gamma CaMKII shuttles Ca<sup>2+</sup>/CaM to the nucleus to trigger CREB phosphorylation and gene expression. *Cell* (2014) 159:281–94. doi:10.1016/j.cell.2014.09.019

62. Muller M, Cardenas C, Mei L, Cheung KH, Foskett JK. Constitutive cAMP response element binding protein (CREB) activation by Alzheimer's disease presenilin-driven inositol trisphosphate receptor (InsP3R) Ca<sup>2+</sup> signaling. *Proc Natl Acad Sci U S A* (2011) 108:13293–8. doi:10.1073/pnas.1109297108
63. West AE, Chen WG, Dalva MB, Dolmetsch RE, Kornhauser JM, Shaywitz AJ, et al. Calcium regulation of neuronal gene expression. *Proc Natl Acad Sci U S A* (2001) 98:11024–31. doi:10.1073/pnas.191352298
64. Min D, Guo F, Zhu S, Xu X, Mao X, Cao Y, et al. The alterations of Ca<sup>2+</sup>/calmodulin/CaMKII/CaV1.2 signaling in experimental models of Alzheimer's disease and vascular dementia. *Neurosci Lett* (2013) 538:60–5. doi:10.1016/j.neulet.2013.02.001
65. Wang HY, Crupi D, Liu JJ, Stucky A, Cruciata G, Di Rocco A, et al. Repetitive transcranial magnetic stimulation enhances BDNF-TrkB signaling in both brain and lymphocyte. *J Neurosci* (2011) 31:11044–54. doi:10.1523/JNEUROSCI.2125-11.2011
66. Lee JY, Kim SH, Ko AR, Lee JS, Yu JH, Seo JH, et al. Therapeutic effects of repetitive transcranial magnetic stimulation in an animal model of Parkinson's disease. *Brain Res* (2013) 1537:290–302. doi:10.1016/j.brainres.2013.08.051
67. Niimi M, Hashimoto K, Kakuda W, Miyano S, Momosaki R, Ishima T, et al. Role of brain-derived neurotrophic factor in beneficial effects of repetitive transcranial magnetic stimulation for upper limb hemiparesis after stroke. *PLoS One* (2016) 11:e0152241. doi:10.1371/journal.pone.0152241
68. Rajendran L, Honsho M, Zahn TR, Keller P, Geiger KD, Verkade P, et al. Alzheimer's disease beta-amyloid peptides are released in association with exosomes. *Proc Natl Acad Sci U S A* (2006) 103:11172–7. doi:10.1073/pnas.0603838103
69. Yan YF, Gong K, Ma T, Zhang LH, Zhao NM, Zhang XF, et al. Protective effect of edaravone against Alzheimer's disease-relevant insults in neuroblastoma N2a cells. *Neurosci Lett* (2012) 531:160–5. doi:10.1016/j.neulet.2012.10.043
70. Lundius EG, Stroth N, Vukojevic V, Terenius L, Svenningsson P. Functional GPR37 trafficking protects against toxicity induced by 6-OHDA, MPP<sup>+</sup> or rotenone in a catecholaminergic cell line. *J Neurochem* (2013) 124:410–7. doi:10.1111/jnc.12081
71. Jing HR, Wang SX, Wang M, Fu WL, Zhang C, Xu DG. Isobavachalcone attenuates MPTP-induced Parkinson's disease in mice by inhibition of microglial activation through NF-kappa B pathway. *PLoS One* (2017) 12:e0169560. doi:10.1371/journal.pone.0169560
72. Guo YC, Wang JF, Wang ZQ, Yang Y, Wang XM, Duan QH. Melatonin protects N2a against ischemia/reperfusion injury through autophagy enhancement. *J Huazhong Univ Sci Technolog Med Sci* (2010) 30:1–7. doi:10.1007/s11596-010-0101-9
73. Wang ZQ, Yang Y, Lu T, Luo P, Li J, Wu JP, et al. Protective effect of autophagy inhibition on ischemia-reperfusion-induced injury of N2a cells. *J Huazhong Univ Sci Technolog Med Sci* (2013) 33:810–6. doi:10.1007/s11596-013-1203-y

**Conflict of Interest Statement:** The authors declare that the research was conducted in the absence of any commercial or financial relationships that could be construed as a potential conflict of interest.

Copyright © 2018 Baek, Park, Kim, Nam, Kim, Jun, Kim and Cho. This is an open-access article distributed under the terms of the Creative Commons Attribution License (CC BY). The use, distribution or reproduction in other forums is permitted, provided the original author(s) and the copyright owner are credited and that the original publication in this journal is cited, in accordance with accepted academic practice. No use, distribution or reproduction is permitted which does not comply with these terms.