

# UCLA

## UCLA Previously Published Works

### Title

Discovery of a Novel Hypervirulent *Acinetobacter baumannii* Strain in a Case of Community-Acquired Pneumonia

### Permalink

<https://escholarship.org/uc/item/7jj8v2tz>

### Authors

Zhou, Hua  
Larkin, Paige MK  
Huang, Jinwei  
et al.

### Publication Date

2020

### DOI

10.2147/idr.s244044

Peer reviewed

# Discovery of a Novel Hypervirulent *Acinetobacter baumannii* Strain in a Case of Community-Acquired Pneumonia

This article was published in the following Dove Press journal:  
*Infection and Drug Resistance*

Hua Zhou, <sup>1,\*</sup>  
Paige MK Larkin, <sup>2,\*</sup>  
Jinwei Huang,<sup>3,\*</sup> Yake Yao,<sup>1</sup>  
Bingquan Zhu,<sup>4</sup> Qing Yang, <sup>5</sup>  
Xiaoting Hua, <sup>6,7</sup>  
Jiaying Zhou, <sup>1</sup>  
Shangxin Yang, <sup>2,8</sup>  
Yunsong Yu,<sup>6,7</sup>

<sup>1</sup>Department of Respiratory Diseases, First Affiliated Hospital of Zhejiang University, Hangzhou, Zhejiang, People's Republic of China; <sup>2</sup>Department of Pathology & Laboratory Medicine, University of California, Los Angeles, Los Angeles, CA, USA; <sup>3</sup>Department of Respiratory Diseases, Sixth Affiliated Hospital of Wenzhou Medical University, Lishui, Zhejiang, People's Republic of China; <sup>4</sup>Department of Child Health Care, Zhejiang University Children's Hospital, Hangzhou, Zhejiang, People's Republic of China; <sup>5</sup>State Key Laboratory for Diagnostic and Treatment of Infectious Diseases, First Affiliated Hospital of Zhejiang University, Hangzhou, People's Republic of China; <sup>6</sup>Department of Infectious Diseases, Sir Run Run Shaw Hospital of Zhejiang University, Hangzhou, People's Republic of China; <sup>7</sup>Key Laboratory of Microbial Technology and Bioinformatics of Zhejiang Province, Hangzhou, People's Republic of China; <sup>8</sup>Zhejiang-California International Nanosystems Institute, Zhejiang University, Hangzhou, People's Republic of China

\*These authors contributed equally to this work

Correspondence: Shangxin Yang;  
Yunsong Yu  
Department of Infectious Diseases, Sir Run Run Shaw Hospital of Zhejiang University, Hangzhou 310016, People's Republic of China  
Tel +86 571 87236873  
Email shangxinyang@mednet.ucla.edu; yvys119@zju.edu.cn

**Purpose:** *Acinetobacter baumannii* is associated with both hospital-acquired infections and community-acquired pneumonia (CAP). Here, we describe a novel strain of *A. baumannii* in a case of CAP in a previously healthy rural villager from Central Eastern China.

**Materials and Methods:** *A. baumannii* isolated from the patient (LS01) was compared to well-characterized pathogenic strain (AB5075), nosocomial circulating strain in China (ZJ06), and wild-type strain (ATCC17978). Growth rate studies were conducted under different environmental stressors, and virulence studies were performed using *Galleria mellonella* larvae. Whole genome sequencing (WGS) was performed using MinIon and MiSeq. Center for Genomic Epidemiology, CLCbio, Geneious, and Virulence Factors of Pathogenic Bacteria database were used for genomic analysis.

**Results:** LS01 grew significantly faster at 37°C and 42°C and in the presence of zinc compared to other strains. LS01 was more virulent in *G. mellonella*, killing all larvae within 8 h. Although WGS revealed 44 virulence genes, these genes were also present in the other strains. While two chromosomally encoded  $\beta$ -lactamases were identified, there were no plasmids identified and LS01 was pan-susceptible to all antibiotics tested. Phylogenetic analysis revealed that the closest related strains were only 72.552% identical, supporting a novel strain.

**Conclusion:** LS01 is a novel strain of hypervirulent yet pan-drug susceptible *A. baumannii* isolated from a patient with no prior hospitalizations, sick contacts, or any of the typical risk factors. This raises concerns for an emerging pathogen, and more epidemiological studies should be conducted to assess the prevalence of this *A. baumannii* strain.

**Keywords:** *Acinetobacter baumannii*, hypervirulent, community-acquired pneumonia, novel strain, emerging pathogen

## Introduction

*Acinetobacter baumannii*, a glucose-non-fermentative aerobic Gram-negative coccobacilli, causes up to 20% of intensive care unit (ICU) infections worldwide, including ventilator-associated and blood stream infections.<sup>1,2</sup> *A. baumannii* has a plastic genome, allowing for rapid mutations, acquisition of new genes, and increased virulence in response to environmental stress,<sup>1,3-5</sup> posing a difficult challenge for treatment and infection control. With the global rise in antibiotic resistance, multi-drug resistant (MDR) *A. baumannii* is an increasing threat for both nosocomial and community-acquired infections. Mechanisms for resistance include mobile genetic elements,<sup>6</sup> efflux pumps, altered permeability, modification of target sites, and  $\beta$ -lactamases, with all four classes of  $\beta$ -lactamases identified in *A. baumannii*.<sup>2</sup>

Although both tigecycline and colistin have been used effectively in the treatment of *A. baumannii* previously, resistant isolates have been reported.<sup>7,8</sup>

While traditionally associated with nosocomial infections, *A. baumannii* is more frequently attributed to community-acquired pneumonia (CAP) in tropical and sub-tropical climates.<sup>4,9,10</sup> Although CAP strains are typically more susceptible to antibiotics than strains implicated in hospital acquired infections (HAI), CAP caused by *A. baumannii* is characterized by a fulminant and severe infection with high mortality.<sup>9</sup> Here we describe a novel virulent *A. baumannii* strain (designated LS01) in a case of CAP in Central Eastern China. We investigated its growth pattern, virulence, antimicrobial susceptibility, and genomic characteristics to better understand the microbiology and pathogenicity of this novel strain.

## Materials and Methods

### Bacterial Isolates and Antimicrobial Susceptibility Testing

In addition to LS01 isolated from this case, other *A. baumannii* strains used in this study included a well characterized pathogenic strain AB5075,<sup>11</sup> a well characterized nosocomial strain ZJ06 circulating in China,<sup>6</sup> and a wild-type control strain ATCC17978. LS01 was identified by the Vitek GNI card (BioMérieux, Marcy-l'Étoile, France) as members of the *Acinetobacter calcoaceticus*-*A. baumannii* complex. The bacteria were cultured in Luria–Bertani (LB) medium at 37°C. Susceptibility testing for strains was performed using the Etest strip according to the manufacturer's instructions. The results were interpreted according to the CLSI breakpoints (Clinical and Laboratory Standards Institute, 28th Edition).

### Efficiency-of-Plating Experiments

Overnight cultures of the indicated strains were diluted into fresh LB medium and grown for 4 h. Aliquots of the cultures were serially diluted, and 100- $\mu$ L volumes were spotted onto Mueller–Hinton (MH) agar plates containing the indicated stressors as follows: for acidic pH, MH medium adjusted to pH 5.5 or pH 4.5 with HCl prior to autoclaving; zinc sulfate ( $ZnSO_4$ ) was added to achieve a concentration of 1.25 mM; 30 °C/42 °C were selected as low/high temperature condition. Efficiency of plating (EOP) was calculated by dividing the CFU recovered on stress medium by the CFU recovered on plain MH grown at 37°C. EOP experiments were

repeated at least three times, with the most representative colonies shown ([Supplementary Figure 1](#)).

### Bacterial Growth Curves and Fitness Cost Measurement

Four independent cultures per strain were grown overnight in MH broth, diluted 1:1000 into fresh MH broth and aliquoted into a flat-bottom 100-well plate in four replicates. The pH 4.5/pH5.5/ $Zn^{2+}$  MH broth were prepared as described above. The normal/pH 4.5/pH 5.5/ $Zn^{2+}$  plates were agitated at 37 °C, and two normal plates were agitated at 30 °C/42 °C, respectively. The OD<sub>600</sub> of each culture was determined every 5 min for 16 h using the Bioscreen C MBR machine (Oy Growth Curves Ab Ltd., Finland). The growth rate was estimated by an R script (<http://dx.doi.org/10.3389/fmicb.2016.01715>). Statistical analyses were performed using GraphPad Prism 5. Two-way analysis of variance (ANOVA) was used to assess differences between the means. A *P* value of <0.05 was considered as statistically significant.

### *Galleria mellonella* Infection

Infection of *G. mellonella* was performed as previously described.<sup>11,12</sup> *A. baumannii* strains were grown overnight in an orbital shaker (37°C, 200 rpm), and overnight cultures were then diluted 100-fold into fresh medium and grown for 4 h. Cells were collected by centrifugation (5 min, 5000 $\times$ g), washed once in phosphate-buffered saline solution (PBS), and resuspended in PBS to a final OD<sub>600</sub> of 1.0. Further dilutions were done in PBS. The number of bacterial cells in the injected sample was enumerated by plating 10-fold serial dilutions on MH agar plates and counting CFU after overnight incubation.

*G. mellonella* larvae weighing 200 to 300 mg were used in the survival assays. Briefly, 10  $\mu$ L of the sample was injected into the last left proleg of the larvae using a 10- $\mu$ L glass syringe (Hamilton, Reno, NV) fitted with a 30G needle (Novo Nordisk, Princeton, NJ). Each experiment included control groups of larvae injected with 10 $\mu$ L sterile PBS. Injected larvae were incubated at 37°C, assessing death at 2h intervals in the first 24h, and 8h intervals in the next 48 h, with a total monitor time of 72h. Larvae were considered dead if they did not respond to physical stimuli. Experiments in which 10% or more of the larvae in either of the control groups died were omitted from the statistical analysis. The survival experiments were repeated three times using 10 larvae per experimental

group, and the most representative curves were presented. Significance of survival differences was assessed with the log rank test using GraphPad Prim 5. A *P* value of <0.05 was considered as statistically significant.

## Whole Genome Sequencing and Analysis

Whole genome sequencing (WGS) by Hiseq (Illumina, Carlsbad, CA) were performed as described previously.<sup>8</sup> Bacteria from a single colony were cultured overnight at 37 °C in MH broth. The genomic DNA was extracted via a QIAamp DNA minikit (Qiagen, Valencia, CA, USA) following the protocol of the manufacturer's protocol. Agarose gel electrophoresis and a NanoDrop spectrophotometer (ND-1000, ThermoFisher, Waltham, MA, USA) were used to determine the quality and quantity of the extracted genomic DNA. The DNA library was prepared using Nextera XT kit (Illumina, Carlsbad, CA) and sequenced by using 2x150 bp paired-end sequencing protocol. WGS by MinION (Nanopore, Oxford, UK) was performed following the manufacturer's protocols. The complete bacterial genome was generated by combining the Hiseq sequences and MinION sequences through a hybrid assembly using Unicycler.<sup>13</sup>

Determination of plasmid replicons and antimicrobial resistance (AMR) performed using online Center for Genomic Epidemiology (CGE) tools (<http://www.genomicepidemiology.org/>).<sup>14</sup> Virulence genes were identified using the VF Analyzer part of the Virulence Factors of Pathogenic Bacteria (VFDB) database using the default settings.<sup>15</sup> Only the results meeting the following criteria are considered valid: Score (bits) >100 and % Identity >90%. Closely related species were identified using CGE Kmer-Finder. Single nuclear polymorphism (SNP) tree was generated using CGE CSI-Phylogeny and visualized using Geneious (Biomatters, New Zealand). Geneious was also used to perform sequence alignment analysis. A Kmer tree was constructed using CLC Genomics Workbench v12 (Qiagen, Valencia, CA, USA).

## Results

### Case History

A previously healthy 52 years old male villager from Lishui, a town in the Southern Zhejiang Province was admitted to the Sixth affiliated Hospital of Wenzhou Medical University for severe CAP and respiratory failure. The patient presented with productive cough, high fever (39.1°C), chills, fatigue, anorexia, chest tightness, shortness of breath, and abdominal

pain. Pulmonary CT showed lobar pneumonia in the right lobe and pleural effusion. Blood test results were consistent with sepsis (white blood cells: 17.7x10<sup>9</sup>/L with 91.8% neutrophils, C-reactive protein: > 200mg/L and procalcitonin: 41.04 ng/mL). Both blood and sputum culture grew *A. baumannii* with the same antibiogram (Table 1). This patient was successfully treated with imipenem 1g IV q8h and levofloxacin 0.5g qd, with symptom improved after four weeks of treatment. He was discharged after five weeks of hospitalization and the follow-up CT exam showed the lung lesions were significantly resolved three months later. The patient had been a vegetable farmer in a small village of less than 100 people, with no known sick contacts. The patient had also no history of prior hospitalizations nor recent travel prior to the illness. The isolate from the patient's blood (designated LS01) was used for all experiments and genomic analysis in this study.

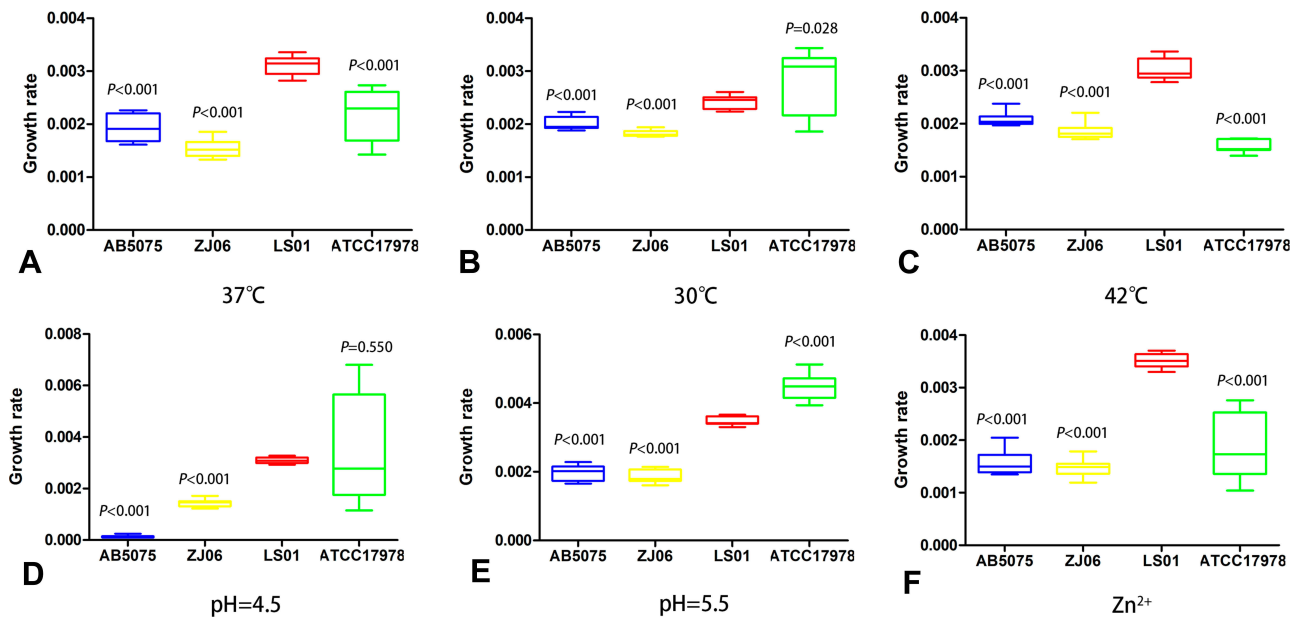
## Characterization of Growth and Virulence of the LS01 Strain

LS01 strain grew significantly faster than other strains AB5075, ZJ06, and ATCC17978 at 37°C, 42°C, and when Zn<sup>2+</sup> was added (P<0.001) (Figure 1). LS01 strain was also significantly more virulent than the other strains tested as it killed 100% of *G. mellonera* larvae within 8 h, while no other strains killed 100% of larvae within 72 h (Figure 2). WGS revealed multiple virulence genes including 14 genes associated with biofilm formation, 1 gene associated with adherence, 2 phospholipase genes, 18 genes associated with iron uptake, and 2 signal transduction genes

**Table 1** Antimicrobial Susceptibility Profile of *A. baumannii* Strains

	AB5075	ZJ06	ATCC17978	LS01
Ceftazidime	>128 <sup>*</sup>	128 <sup>*</sup>	4	4
Cefepime	>256 <sup>*</sup>	128 <sup>*</sup>	4	4
Ciprofloxacin	>32 <sup>*</sup>	>32 <sup>*</sup>	0.25	0.125
Amikacin	64 <sup>*</sup>	>256 <sup>*</sup>	1	0.5
Tobramycin	32 <sup>*</sup>	>64 <sup>*</sup>	1	0.5
Meropenem	32 <sup>*</sup>	>32 <sup>*</sup>	0.5	0.5
Imipenem	32 <sup>*</sup>	>32 <sup>*</sup>	0.25	0.25
Ampicillin-sulbactam	128 <sup>*</sup>	128 <sup>*</sup>	2	2
Piperacillin-tazobactam	>256 <sup>*</sup>	>256 <sup>*</sup>	8	16
Cefoperazone-sulbactam	128 <sup>*</sup>	64 <sup>*</sup>	2	2
Trimethoprim/sulfamethoxazole	32 <sup>*</sup>	32 <sup>*</sup>	4 <sup>*</sup>	0.625
Tigecycline	1	2	0.125	0.125
Colistin	0.5	0.5	0.25	0.25

**Note:** <sup>\*</sup> The strain is resistant to the corresponding antimicrobial according to the CLSI breakpoints (Clinical and Laboratory Standards Institute, 28th Edition).



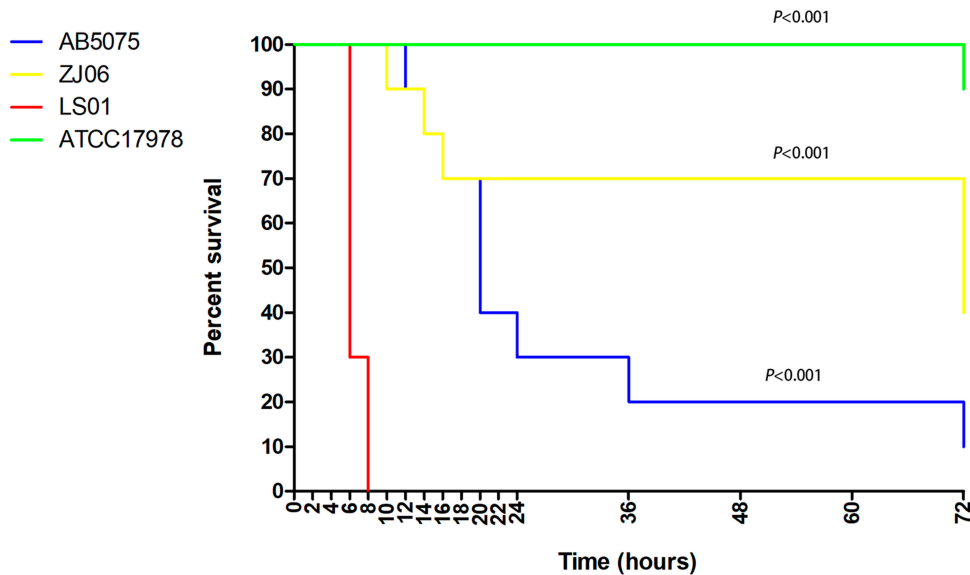
**Figure 1** Growth rate study. Growth rate of AB5075, ZJ06, LS01, and ATCC17978 strains were measured at (A) 37°C, (B) 30°C, (C) 42°C, (D) pH=4.5, (E) pH=5.5, and (F) Zn<sup>2+</sup>. Two-way analysis of variance (ANOVA) was used to assess differences between the means.

(Supplementary Table S1). However, none of these virulence genes were unique to LS01 as they are also found in other strains included in this study (data not shown).

### Characterization of Drug Susceptibility and AMR Genes

LS01 was susceptible to all antibiotics tested and its susceptibility pattern was most similar to the ATCC17978 strain

(Table 1). Whole genome sequencing data matched this as no plasmid replicon was detected and there were no acquired AMR genes except for chromosome carrying β-lactamase genes (*bla*<sub>ADC-25</sub> and *bla*<sub>OXA-91</sub>). When comparing to the reference resistance genes, LS01 had 99.88% identity and 96.18% identity to *bla*<sub>OXA-91</sub> (DQ519086) and *bla*<sub>ADC-25</sub> (EF016355), respectively. There was a single silent mutation in *bla*<sub>OXA-91</sub> (G>A at nucleotide position 720). However,



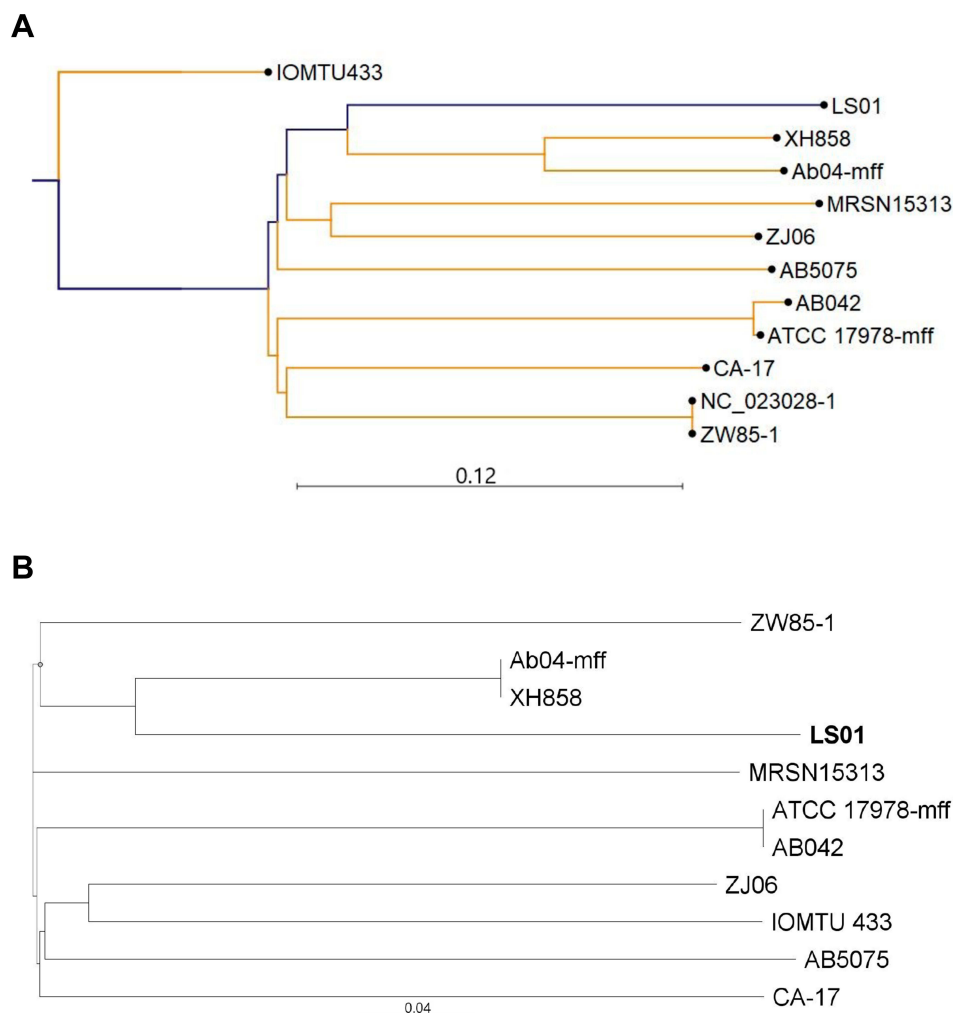
**Figure 2** *G. mellonera* killing study. The percent survival of *G. mellonera* after infection with AB5075, ZJ06, LS01, and ATCC17978 was measured for 72 h after infection. Statistical significance was calculated using log rank test. The survival experiments were repeated three times (n=10 larvae per experimental group), and the most representative curves were presented.

ISAbal insertion sequence was not found upstream of *blaOXA-91*, which has been shown to be necessary to turn on the expression of this gene.<sup>21</sup> Six non-synonymous mutations were identified for *blaADC-25* including E119V, K150Q, S167P, A270T, V347I, and N379S, but it is not clear how these mutations affect the enzymatic function.

## Phylogenetic Analysis of the Novel *A. baumannii* Strain

LS01 species identification was confirmed by NCBI BLAST based on the full-length 16S ribosomal RNA gene sequence extracted from the WGS data, with > 99.8% identity to *A. baumannii* and <99.0% identity to other *Acinetobacter* species. The *A. baumannii* strains associated with the following names and NCBI accession numbers

were identified as the most closely related: XH858 (NZ\_CP014528.1), MRSN15313 (NZ\_CP033869), ATCC 17978-mff (NZ\_CP012004.1), ZW85-1 (NC\_023028.1), CA-17 (NZ\_CP012587.1), Ab04-mff (NZ\_CP012006.1), IOMTU 433 (NZ\_AP014649.1), and AB042 (NZ\_CP019034.1). A pathogenic strain AB5075-UW (NZ\_CP008706.1) and the main nosocomial strain circulating in China MDR-ZJ06 (CP001937.2) were also included for comparison. The most closely related *A. baumannii* strains were AB04-mff and XH858 (Figure 3). However, the percentage identity between LS01 and those two strains was only 72.5% (Supplementary Table S2). LS01 was even less related to the predominant circulating *A. baumannii* strain in China MDR-ZJ06 and a highly pathogenic strain AB5075-UW with percentage identity of 65.1% and 64.4%, respectively (Supplementary Table S2).



**Figure 3** Phylogenetic analysis of the novel *A. baumannii* strain LS01. **(A)** K-mer tree; **(B)** single nuclear polymorphism (SNP) tree.

## Discussion

This was an unusual case of CAP caused by a novel wild-type *A. baumannii* strain (LS01). It remains uncertain how this patient became infected with this virulent strain as the patient was a vegetable grower in a rural village of less than 100 people, with no history of previous hospitalizations or sick contacts. Individuals with chronic pulmonary disease, renal disease, heavy smoking, diabetes mellitus, or excessive alcohol consumption have an increased risk for developing *A. baumannii* CAP.<sup>4</sup> Our patient met none of these criteria, further posing the question of the source of infection. One potential hypothesis for acquisition of this hypervirulent *A. baumannii* strain is through contact with the environment. Although there has not been a natural source of *A. baumannii* identified,<sup>16</sup> *Acinetobacter* has been found in water and food sources in wet climates, with antibiotic resistant strains isolated from these sources.<sup>4</sup> In fact, MDR *A. baumannii* isolates from urban sewage and river water matched strains in hospital-acquired pneumonia,<sup>17</sup> supporting a connection between clinical and environmental strains.

CAP due to *A. baumannii* is typically more fulminant compared to HAP. This is evidenced by an overall higher mortality,<sup>18</sup> with mortality occurring within 48–72 h after hospital admission.<sup>9</sup> In one study, all patients with CAP *A. baumannii* developed an acute clinical presentation, including septic shock, acute kidney injury, or respiratory failure and over half of the patients died.<sup>10</sup> Consistent with these studies, our patient presented with severe pneumonia and bacteremia.

The virulence of this strain, as demonstrated by the moth killing experiment (Figure 2) is striking. Increased virulence in *A. baumannii* has been shown to be attributed to porins, capsular polysaccharides, protein secretion systems, biofilm formation, and metal acquisition systems.<sup>2,12</sup> The thick capsular polysaccharide of *A. baumannii* reduces the susceptibility to complement-mediated killing, while the ability to form biofilms promotes persistent growth in the healthcare setting.<sup>1</sup> *A. baumannii* actively pumps out chlorhexidine, a common hospital antiseptic that targets cell membranes, using the *Acinetobacter* chlorhexidine (Acel) efflux protein, rendering the disinfectant less effective.<sup>1</sup> One study found that nearly a quarter of air samples from patient rooms were contaminated with carbapenem-resistant *A. baumannii*,<sup>4</sup> demonstrating the potential airborne spread of the bacteria. Furthermore, virulence is maintained despite desiccation and starvation.<sup>5</sup>

In the case of this isolate, LS01, multiple virulence factors were identified including genes associated with biofilm

formation, adherence, phospholipase, and iron uptake. Interestingly, many of these virulence genes have also been identified in MDR *A. baumannii* including *ompA*, *bap*, *bfmS*, *csgA*, *csuE*, and *pgaB*<sup>19</sup> as well as the ATCC 17978-mff, AB5075-UW, and MDR-ZJ06 strains (data not shown). Despite the prevalence of these genes in MDR *A. baumannii*, one study found that there was no significant difference in the presence of *ompA* and *bap* genes between environmental and clinical isolates.<sup>20</sup> This poses the question of why LS01 is so virulent despite no known unique virulence factors identified. This will be the focus of future studies. One limitation of this study is that the database used to identify virulence genes does not provide information regarding chromosomal mutations or structural changes that may impact virulence. The other limitation is that we did not include more clinical *A. baumannii* strains in this study, which may help elucidate the reasons for this hypervirulent phenotype.

Although hospital-acquired *A. baumannii* strains are typically resistant to most drugs, CAP strains are usually less resistant, as is the case with this CAP strain, LS01. LS01 was susceptible to all drugs tested (Table 1) despite possessing naturally occurring  $\beta$ -lactamases *blaOXA-91* and *blaADC-25*. *BlaOXA-91* is a *blaOXA-51*-type  $\beta$ -lactamase, which does not contribute to intrinsic  $\beta$ -lactam resistance unless an ISAbal insertion sequence is located upstream.<sup>21,22</sup> *BlaADC-25* is a chromosomally encoded cephalosporinase that typically confers resistance to all  $\beta$ -lactams.<sup>23</sup> Our results showed that there are no identified mutations that could account for change in function of *blaOXA-91*, matching our susceptibility testing. However, six non-synonymous mutations identified in *blaADC-25* could potentially change the enzymatic activity of this  $\beta$ -lactamase. Further studies are needed to understand the mechanism behind the pan-susceptible nature of LS01.

Taken together, we describe a novel community-acquired hypervirulent strain of *A. baumannii* causing a severe pneumonia in a previously healthy individual. The discovery of this strain raises concerns for an emerging pathogen, which is more than 25% genetically different from all other known *A. baumannii* strains. It should be noted that *A. baumannii* is known to have a very plastic genome with 25–46% of the genes unique to each strain.<sup>3</sup> The introduction of this virulent strain from the environment into a hospital setting is concerning since the bacteria could possibly spread to other areas and rapidly gain antibiotic resistance due to its genomic plasticity. Further epidemiological studies are needed to understand the degree of spread of this pathogenic strain among the community in China.

## Ethics Approval

This study has been reviewed and approved by the Research Ethics Committee of the First Affiliated Hospital of Zhejiang University (ref#20191002). The patient had given his consent for publication of clinical details, and written informed consent was obtained.

## Funding

This work was supported by a research grant from the Natural Science Foundation of Zhejiang Province (LQ18H190001, LQ20H0006) and a grant from the National Natural Science Foundation of China (81971897). The research funding was provided to Dr. Hua Zhou, Dr. Bingquan Zhu and Dr. Yake Yao.

## Disclosure

The authors report no conflicts of interest in this work.

## References

- Harding CM, Hennon SW, Feldman MF. Uncovering the mechanisms of *Acinetobacter baumannii* virulence. *Nat Rev Microbiol*. 2018;16(2):91–102. doi:10.1038/nrmicro.2017.148
- Lee CR, Lee JH, Park M, et al. Biology of *Acinetobacter baumannii*: pathogenesis, antibiotic resistance mechanisms, and prospective treatment options. *Front Cell Infect Microbiol*. 2017;7:55.
- Antunes LC, Visca P, Towner KJ. *Acinetobacter baumannii*: evolution of a global pathogen. *Pathog Dis*. 2014;71(3):292–301. doi:10.1111/2049-632X.12125
- Wong D, Nielsen TB, Bonomo RA, Pantapalangkoor P, Luna B, Spellberg B. Clinical and pathophysiological overview of *Acinetobacter* infections: a century of challenges. *Clin Microbiol Rev*. 2017;30(1):409–447. doi:10.1128/CMR.00058-16
- Chapartegui-Gonzalez I, Lazaro-Diez M, Bravo Z, Navas J, Icardo JM, Ramos-Vivas J. *Acinetobacter baumannii* maintains its virulence after long-time starvation. *PLoS One*. 2018;13(8):e0201961. doi:10.1371/journal.pone.0201961
- Zhou H, Zhang T, Yu D, et al. Genomic analysis of the multidrug-resistant *Acinetobacter baumannii* strain MDR-ZJ06 widely spread in China. *Antimicrob Agents Chemother*. 2011;55(10):4506–4512. doi:10.1128/AAC.01134-10
- Li X, Liu L, Ji J, et al. Tigecycline resistance in *Acinetobacter baumannii* mediated by frameshift mutation in *plsC*, encoding 1-acyl-sn-glycerol-3-phosphate acyltransferase. *Eur J Clin Microbiol Infect Dis*. 2015;34(3):625–631. doi:10.1007/s10096-014-2272-y
- Hua X, Liu L, Fang Y, et al. Colistin resistance in *Acinetobacter baumannii* MDR-ZJ06 revealed by a multiomics approach. *Front Cell Infect Microbiol*. 2017;7:45. doi:10.3389/fcimb.2017.00045
- Dexter C, Murray GL, Paulsen IT, Peleg AY. Community-acquired *Acinetobacter baumannii*: clinical characteristics, epidemiology and pathogenesis. *Expert Rev Anti Infect Ther*. 2015;13(5):567–573. doi:10.1586/14787210.2015.1025055
- Ong CW, Lye DC, Khoo KL, et al. Severe community-acquired *Acinetobacter baumannii* pneumonia: an emerging highly lethal infectious disease in the Asia-Pacific. *Respirology*. 2009;14(8):1200–1205. doi:10.1111/j.1440-1843.2009.01630.x
- Jacobs AC, Thompson MG, Black CC, et al. AB5075, a highly virulent isolate of *Acinetobacter baumannii*, as a model strain for the evaluation of pathogenesis and antimicrobial treatments. *MBio*. 2014;5(3):e01076–14. doi:10.1128/mBio.01076-14
- Gebhardt MJ, Shuman HA. GigA and GigB are master regulators of antibiotic resistance, stress responses, and virulence in *Acinetobacter baumannii*. *J Bacteriol*. 2017;199:10. doi:10.1128/JB.00066-17
- Wick RR, Judd LM, Gorrie CL, Holt KE. Unicycler: resolving bacterial genome assemblies from short and long sequencing reads. *PLoS Comput Biol*. 2017;13(6):e1005595. doi:10.1371/journal.pcbi.1005595
- Zankari E, Hasman H, Cosentino S, et al. Identification of acquired antimicrobial resistance genes. *J Antimicrob Chemother*. 2012;67(11):2640–2644. doi:10.1093/jac/dks261
- Liu B, Zheng D, Jin Q, Chen L, Yang J. VFDB 2019: a comparative pathogenomic platform with an interactive web interface. *Nucleic Acids Res*. 2019. 47(D1):D687–D92. doi:10.1093/nar/gky1080.
- Visca P, Seifert H, Towner KJ. *Acinetobacter* infection—an emerging threat to human health. *IUBMB Life*. 2011;63(12):1048–1054. doi:10.1002/iub.534
- Seruga Music M, Hrenovic J, Goic-Barisic I, Hunjak B, Skoric D, Ivankovic T. Emission of extensively-drug-resistant *Acinetobacter baumannii* from hospital settings to the natural environment. *J Hosp Infect*. 2017;96(4):323–327. doi:10.1016/j.jhin.2017.04.005
- Chen CT, Wang YC, Kuo SC, et al. Community-acquired bloodstream infections caused by *Acinetobacter baumannii*: a matched case-control study. *J Microbiol Immunol Infect*. 2018;51(5):629–635. doi:10.1016/j.jmii.2017.02.004
- Zeighami H, Valadkhani F, Shapouri R, Samadi E, Haghi F. Virulence characteristics of multidrug resistant biofilm forming *Acinetobacter baumannii* isolated from intensive care unit patients. *BMC Infect Dis*. 2019;19(1):629. doi:10.1186/s12879-019-4272-0
- Bardbari AM, Arabestani MR, Karami M, Keramat F, Alikhani MY, Bagheri KP. Correlation between ability of biofilm formation with their responsible genes and MDR patterns in clinical and environmental *Acinetobacter baumannii* isolates. *Microb Pathog*. 2017;108:122–128. doi:10.1016/j.micpath.2017.04.039
- Koh TH, Sng LH, Wang GC, Hsu LY, Zhao Y. IMP-4 and OXA beta-lactamases in *Acinetobacter baumannii* from Singapore. *J Antimicrob Chemother*. 2007;59(4):627–632. doi:10.1093/jac/dk1544
- Turton JF, Woodford N, Glover J, Yarde S, Kaufmann ME, Pitt TL. Identification of *Acinetobacter baumannii* by detection of the blaOXA-51-like carbapenemase gene intrinsic to this species. *J Clin Microbiol*. 2006;44(8):2974–2976. doi:10.1128/JCM.01021-06
- Dortet L, Bonnin RA, Bernabeu S, et al. First occurrence of OXA-72-producing *Acinetobacter baumannii* in Serbia. *Antimicrob Agents Chemother*. 2016;60(10):5724–5730. doi:10.1128/AAC.01016-16

### Infection and Drug Resistance

### Publish your work in this journal

Infection and Drug Resistance is an international, peer-reviewed open-access journal that focuses on the optimal treatment of infection (bacterial, fungal and viral) and the development and institution of preventive strategies to minimize the development and spread of resistance. The journal is specifically concerned with the epidemiology of

antibiotic resistance and the mechanisms of resistance development and diffusion in both hospitals and the community. The manuscript management system is completely online and includes a very quick and fair peer-review system, which is all easy to use. Visit <http://www.dovepress.com/testimonials.php> to read real quotes from published authors.

Submit your manuscript here: <https://www.dovepress.com/infection-and-drug-resistance-journal>

Dovepress