

UCSF

UC San Francisco Previously Published Works

Title

NMDA receptor binding in focal epilepsies

Permalink

<https://escholarship.org/uc/item/7j36r8bx>

Journal

Journal of Neurology Neurosurgery & Psychiatry, 86(10)

ISSN

0022-3050

Authors

McGinnity, CJ
Koepp, MJ
Hammers, A
[et al.](#)

Publication Date

2015-10-01

DOI

10.1136/jnnp-2014-309897

Peer reviewed



OPEN ACCESS

RESEARCH PAPER

NMDA receptor binding in focal epilepsies

C J McGinnity,^{1,2,3} M J Koepp,^{4,5} A Hammers,^{1,2,3,4,5,6} D A Riaño Barros,^{1,2}
R M Pressler,⁷ S Luthra,⁸ P A Jones,⁸ W Trigg,⁸ C Micallef,⁹ M R Symms,^{4,5}
D J Brooks,^{1,10} J S Duncan^{4,5}

For numbered affiliations see end of article.

Correspondence to

Professor J S Duncan,
Department of Clinical and
Experimental Epilepsy, UCL
Institute of Neurology,
London WC1N 3BG, UK;
j.duncan@ucl.ac.uk

Received 14 November 2014

Revised 15 April 2015

Accepted 16 April 2015

Published Online First

19 May 2015

ABSTRACT

Objective To demonstrate altered *N*-methyl-D-aspartate (NMDA) receptor availability in patients with focal epilepsies using positron emission tomography (PET) and [¹⁸F]GE-179, a ligand that selectively binds to the open NMDA receptor ion channel, which is thought to be overactive in epilepsy.

Methods Eleven patients (median age 33 years, 6 males) with known frequent interictal epileptiform discharges had an [¹⁸F]GE-179 PET scan, in a cross-sectional study. MRI showed a focal lesion but discordant EEG changes in two, was non-localising with multifocal EEG abnormalities in two, and was normal in the remaining seven patients who all had multifocal EEG changes. Individual patient [¹⁸F]GE-179 volume-of-distribution (V_T) images were compared between individual patients and a group of 10 healthy controls (47 years, 7 males) using Statistical Parametric Mapping.

Results Individual analyses revealed a single cluster of focal V_T increase in four patients; one with a single and one with multifocal MRI lesions, and two with normal MRIs. Post hoc analysis revealed that, relative to controls, patients not taking antidepressants had globally increased [¹⁸F]GE-179 V_T (+28%; $p < 0.002$), and the three patients taking an antidepressant drug had globally reduced [¹⁸F]GE-179 V_T (-29%; $p < 0.002$). There were no focal abnormalities common to the epilepsy group.

Conclusions In patients with focal epilepsies, we detected primarily global increases of [¹⁸F]GE-179 V_T consistent with increased NMDA channel activation, but reduced availability in those taking antidepressant drugs, consistent with a possible mode of action of this class of drugs. [¹⁸F]GE-179 PET showed focal accentuations of NMDA binding in 4 out of 11 patients, with difficult to localise and treat focal epilepsy.

hydroxy-5-methyl-4-isoxazolepropionic acid (AMPA)/kainate receptors induces convulsions in vivo either by directly mediating an epileptic depolarisation through the NMDA calcium channels or by indirectly activating NMDA channels subsequent to AMPA/kainate receptor activation^{9–11} (for review: ref. 12). Blockade of NMDA receptors is neuroprotective,¹³ prevents paroxysmal depolarisation shifts, which are the intracellular correlate of interictal epileptiform discharges (IEDs),^{14–17} and blocks the development of kindling.^{18–20} Several^{21–22} but not all kindling model studies have shown the presence of increased NMDA receptor availability in the hippocampus and cerebral cortex of epileptic animals. Autoradiography of human epileptogenic temporal lobe tissue has revealed increased NMDA receptor availability in the parahippocampal gyrus, in contrast to decreased availability in the hippocampi, particularly in sclerotic regions.^{23–24} In vitro studies in tissue resected from patients with epilepsy have associated NMDA receptor-mediated neurotransmission with epileptic activity.^{25–30} Receptor activation, however, can only be shown in vivo. Human microdialysis studies have revealed marked elevations in extracellular glutamate concentration preceding and during seizures,^{31–37} which would be expected to result in increased NMDA receptor activation. Hence, there is interest in the development of radioligands that allow assessment of NMDA receptor function in humans in vivo.

We have previously observed good brain penetration, moderately heterogeneous distribution in grey matter and suitably rapid washout of the novel NMDA positron emission tomography (PET) tracer [¹⁸F]GE-179 in healthy controls.³⁸ This ligand binds at the phencyclidine (PCP) recognition site³⁹ within the NMDA ion channel pore, and hence requires receptor activation for access. This ‘pore-blocker’ ligand could potentially allow use-dependent imaging of the NMDA receptor in the active/open state using PET. We report the first use of [¹⁸F]GE-179 PET in focal epilepsies of different focal and multifocal onset. The objective of this proof-of-principle study was to demonstrate in vivo a hypothesised increased NMDA receptor activation in patients with drug-resistant epilepsy.

METHODS

The study was approved by the Research Ethics Committees of the Royal Marsden Hospital, Imperial College Healthcare NHS Trust and University College London Hospitals NHS

INTRODUCTION

N-methyl-D-aspartate (NMDA) receptors are ligand-gated and voltage-gated ion channels that mediate fast excitatory neurotransmission in the central nervous system (CNS).^{1–2} NMDA receptor-mediated neurotransmission is necessary for cognition, memory and neuronal survival, but excessive NMDA receptor activation mediates excitotoxic neuronal injury following acute cerebral insults,³ is associated with cell death⁴ and is thought to contribute to disorders of neuronal hyperexcitability, such as epilepsy and neuropathic pain, and chronic neurodegenerative diseases,⁵ depression^{6–7} and schizophrenia.⁸ In chemical models, administration of agonists of either the NMDA or α -amino-3-



Open Access
Scan to access more
free content



► <http://dx.doi.org/10.1136/jnnp-2015-310333>



CrossMark

To cite: McGinnity CJ, Koepp MJ, Hammers A, et al. *J Neurol Neurosurg Psychiatry* 2015;**86**: 1150–1157.

Foundation Trust. Permission to administer [^{18}F]GE-179 was obtained from the Administration of Radioactive Substances Advisory Committee (ARSAC), UK. All participants provided written, informed consent.

Epilepsy and control populations

This was a proof-of-principle, cross-sectional pilot study with targets of 12 participants per group. Eleven patients with refractory focal epilepsies (median age 33 years; range 20–50 years; 6 males) were recruited from the outpatient clinics at the National Hospital for Neurology and Neurosurgery. Demographics and clinical details are listed in table 1. Their diagnoses were based on history, seizure semiology, prolonged and repeated interictal and ictal EEG recordings (where available), and MRI data. Patients were chosen who had frequent interictal spikes on previous EEG recordings, which we hypothesised would maximise our chances to detect increased binding to open NMDA receptors. None of the patients were taking an antiepileptic drug (AED) known to act at the NMDA receptor. Exclusion criteria included inability to provide informed consent, claustrophobia, standard MR contraindications, a positive urinary pregnancy test on the day of the PET scan and history of drug abuse. Patient 4, whose seizures consisted of a sustained fluctuation of perception of brightness with pupillary hippus, has been presented in a detailed case report.⁴⁰

The control group, 9 of whom have been described previously,³⁸ comprised 10 healthy volunteers without history of neurological or psychiatric illness (median age 46 years; range 25–62 years; 7 males). Additional exclusion criteria were as described for the patients above. A further three seemingly healthy individuals were subsequently excluded; one due to excessive movement throughout the PET scan acquisition, one whose MRI revealed evidence of a cerebral infarct; and one who was discovered to have a history of benzodiazepine abuse. The original control group data were used, rather than repeat imaging; the patient data were acquired at approximately the same time as those of the control group (i.e. within 12 months) using the same imaging protocol.

Median age and body mass index (BMI) were compared between patients and control groups by Mann-Whitney U statistic in SPSS. Gender balance was compared between groups with the (Pearson) χ^2 test.

MRI data acquisition

Three-dimensional volumetric T1-weighted coronal MRI sequences were acquired at Epilepsy Society (Chalfont St. Peter, UK), as previously described.³⁸ MRIs were reviewed by an experienced neuroradiologist (CM). MRIs were not available for one control participant, in whom 3.0 T MRI was contraindicated.

EEG

All patients had an EEG during the PET scan using a Trackit 18/8 (Lifelines Limited, Hants, UK) ambulatory EEG recorder and an ECI E1 Cap (Electro-Cap International, Eaton, Ohio, USA) with 19 electrodes placed according to the International 10–20 system. An additional reference electrode (Fpz) was sited just anterior to Fz. The O1 and O2 electrodes were removed from the cap prior to scanning for several patients in order to minimise discomfort. The participants were closely observed for evidence of seizures throughout the scan. EEGs were reviewed by an experienced clinical neurophysiologist (RMP). The number of IEDs during the first 30 min of scan acquisition was

quantified and correlated with [^{18}F]GE-179 global volume-of-distribution (V_T) using Spearman's r correlation coefficient.

PET image acquisition and data analysis

PET image acquisition has been described previously.³⁸ Briefly, images were acquired using a Siemens/CTI ECAT EXACT3D 962 HR+PET camera (Siemens, Erlangen, Germany) at Hammersmith Imanet Limited. Each participant had a 90 min dynamic emission scan with a smooth bolus intravenous injection of median 187 MBq (range 173–192 MBq) [^{18}F]GE-179 administered 30 seconds after starting image acquisition. For calculation of continuous decay-corrected and metabolite-corrected parent plasma input functions, discrete arterial blood samples were taken throughout the scan, with continuous arterial blood sampling for the first 15 minutes.

The area under the metabolite model curves (AUC_{metabs}) was used as a measure of the rate of metabolism for each individual. The AUC_{metabs} over $t=0$ –30 minutes and $t=0$ –90.5 minutes was compared between groups by multivariate general linear model (GLM), with gender as a fixed factor, and age and BMI as covariates. The residual sum of squares (RSS_{metabs}) for the metabolite model curve was compared between groups by univariate GLM. The threshold for statistical significance was $p=0.05$.

The V_T of [^{18}F]GE-179 was computed at the voxel level for each participant by exponential spectral analysis, as described previously.³⁸

Each participant's V_T image was spatially normalised using a scanner-specific template. To enable group-wise comparisons, images acquired from patients with an epileptogenic zone in the right hemisphere (3 patients) were left-right flipped prior to normalisation; three control participants' images were also left-right flipped prior to group-wise comparison (controls 1, 4 and 6, selected at random). For individual (1 patient vs 10 controls) comparisons, the native (unflipped) patient and control images were used.

The primary outcome measure, global V_T , was computed as an overall mean over the entire matrix, thresholded at 1/8 of that value to create a brain mask, and averaged again within this mask. The global V_T values were compared between groups using a univariate GLM, with gender as a fixed factor, and age and BMI as covariates.

In order to identify changes in the regional distribution of activated NMDA receptors, group-wise SPM8 analyses based on the smoothed (12 mm Full Width at Half Maximum (FWHM) isotropic Gaussian kernel), transformed parametric V_T images, were performed, comparing patients with focal epilepsy against the controls. The images were compared on a voxel-by-voxel basis using a two-sample t test, assuming unequal variances, with global V_T taken into account via an analysis of covariance (ANCOVA) by group. The images were grey and white matter (explicit) masked, with relative threshold masking at 0.4. We report differences in [^{18}F]GE-179 V_T at $p<0.001$ (uncorrected), clusters at $p<0.05$ (uncorrected) and an extent threshold of 15 voxels.

In order to identify participant-specific changes in the regional distribution of activated NMDA receptors, individual SPM8 analyses based on the smoothed transformed parametric V_T images were also performed for each of the patients with frequent IEDs against the 10 controls. Equal variances were assumed and global V_T taken into account via an ANCOVA by group. The unflipped V_T image for each control participant was compared with those of the nine other controls in an identical fashion.

Table 1 Patients with focal epilepsy and frequent IED—clinical details

ID	Age/sex/handedness	Probable localisation MRI/EEG	Onset/duration (years)	Postictal interval	Treatment	Seizures	EEG	MEG	MRI	[¹⁸ F]FDG-PET	Global [¹⁸ F]GE-179 V _T	Approximately N of observed IEDs (t=0–30 min)	[¹⁸ F]GE-179 V _T increases	[¹⁸ F]GE-179 V _T decreases
1	41/M/R	L frontal	14.5/26.5	6.0 h	CBZ, LEV, LTG, ZNS	SPS, CPS, SGS	L frontotemporal	NA	R IFG lesion	L temporal	6.16	62	L frontal	
2	22/M/R	L temporal	4/18	7.5 h	CBZ, LEV, LAC	CPS, SGS	L frontotemporal and R temporal	NA	L HS	L hemisphere	7.20	43		
3	38/M/L	Multifocal MRI, EEG/MEG	2.5/36.5	45 min	CBZ, CLB, PHT, TPM, fexofenadine	SPS, CPS, SGS	R frontotemporal	R frontal, L and R temporal	Bilateral tubers: F, P, L-O, periventricular calc	R temporal	8.16	0		
4	28/F/R	Multifocal MRI, EEG/MEG	10/18	20.5 h	LEV, sertraline , amlodipine	SPS (pupillary hippus)	R temporoparietal	R parieto-occipital >R temporal >L occipital	Bilateral tubers: L and R frontal, L temporal, R parieto-occipital, L occipital	NA	4.53	EEG data corrupted	Brainstem; L temporal; R temporal	R parietal
5	50/F/R	MRI negative Multifocal EEG/MEG	11/39	39 days	LEV, PHT, lofepramine	CPS SGS	L>R temporal	L and R temporal	Neg	L temporal	5.32	26	R frontal	
6	33/M/L	MRI negative Unifocal EEG/MEG	19/14	NA	CLN, RUF, fluoxetine	CPS	L temporal	L frontotemporal	Neg	Neg	3.90	168		
7	23/M/L	MRI-negative Unifocal EEG	16/7	3 days	CBZ, VAL	SPS, SGS	R frontal	NA	Neg	Neg	7.72	86	L frontal; R frontal	L temporal; R frontal
8	40/F/L	MRI negative PET/MEG L Frontal	12.5/28	11 days	CLB, LAC, OXC	SGS	L>R frontal	L F	Neg	L frontal	8.40	42		
9	24/M/R	MRI negative Multifocal EEG/MEG	7/17	6.5 h	LAC, LEV, LTG, OXC, CLB	CPS, SGS	R frontocentral	L frontal >L insula. >L frontotemporal	Neg	Neg	8.44	9		
10	50/F/R	MRI negative Multifocal EEG/MEG	13/37	10+years	LEV, LAC, LTG	CPS	L>R temporal	L and R T	Neg	NA	8.17	Cont epileptiform activity*		
11	20/F/R	MRI negative Multifocal EEG	14/6	39.5 h	CLB, OXC,	CPS, SGS	R>L temporal	NA	Neg	Neg	8.88	3		

Antidepressant drugs (patients 4–6) are displayed in bold font.

*EEG revealed continuous ongoing focal epileptiform activity in patient 10, who had not shown clinically evident seizure activity within the preceding 10 years. Underline indicates concordance between the cluster of increase and the location of the presumed epileptogenic zone, where known.

Calc, calcification; CBZ, carbamazepine; CLB, clobazam; CLN, clonazepam; CPS, complex partial seizures; EEG, electroencephalography; F, frontal lobe; F/M, female/male; [¹⁸F]FDG-PET, [¹⁸F]fluorodeoxyglucose positron emission tomography; HS, hippocampal sclerosis; ID, identifying number; IED, interictal epileptiform discharges; IFG, inferior frontal gyrus; L/R, left/right; LAC, lacosamide; LEV, levetiracetam; LTG, lamotrigine; MEG, magnetoencephalography; MRI, magnetic resonance imaging; NA, not available; Neg, negative, that is, no significant findings; O, occipital; OXC, oxcarbazepine; P, parietal lobe; PHT, phenytoin; RUF, rufinamide; SGS, secondary generalised seizures; SPS, simple partial seizures; TPM, topiramate; VAL, valproate; V_T, volume-of-distribution; ZNS, zonisamide.

RESULTS

There was no difference between patient and control group in terms of age ($p=1.00$), BMI ($p=1.00$) or gender mix ($p=0.47$).

There were no significant differences in the AUC_{metabs} or the RSS_{metabs} between the groups ($p=0.19$ and $p=0.47$, respectively). Age, BMI and gender also did not significantly influence the AUC_{metabs} (all $p>0.09$).

Global changes in V_T

Global V_T was higher in the focal epilepsy group (median 7.51, range 3.77–8.66) than in controls (median 6.21, range 5.37–7.56), although this did not reach statistical significance ($p=0.40$). There were two distinct subgroups of patients with higher ($n=8$) and lower ($n=3$) than normal global V_T . To explore this distribution in patients further, post hoc analysis revealed large and significant differences in global V_T between patients with focal epilepsy who were not taking antidepressant drugs (median 7.97, range 6.04–8.66; +28% relative to controls), and those who were taking antidepressant drugs (median 4.40, range 3.77–5.15; –29% relative to controls), and controls (6.21, range 5.37–7.56; all $p<0.002$; figure 1).

There were no differences (in gender, age, AUC_{metabs} , RSS_{metabs} , BMI, number of IEDs in the first 30 min postinjection) to explain the occurrence of high- V_T and low- V_T patients other than their use of antidepressants.

Frequent IEDs were noted in the EEG of eight patients throughout the first 30 min of scan acquisition. Global V_T did not correlate with the frequency of IEDs measured in the first 30 min after radiotracer injection.

In the following analyses, in order to detect focal increases in activated NMDA receptors over and above global increases, the contribution of global V_T to variance was removed by an ANCOVA by group.

Focal changes—group comparisons

There were no common areas of relative focal decrease or focal accentuations of the globally increased [^{18}F]GE-179 V_T in the patient group compared with controls.

Relative decreases in V_T —individual comparisons

A focal decrease in [^{18}F]GE-179 V_T was seen in two healthy control participants (control 3 mid-parietal; control 4 frontal pole). A relative focal decrease in [^{18}F]GE-179 V_T was seen in two patients (table 2). None of these changes reached significance after correction for multiple comparisons. In one patient (patient 10), the area of relatively decreased V_T was concordant with one of the multiple tubers seen on MRI.

Relative increases in V_T —individual comparisons

Focal increases in [^{18}F]GE-179 V_T were seen in one control participant (control 4), maximal in the left parieto-occipital region. A focal increase above global baseline increase in [^{18}F]GE-179 V_T was seen in four patients (table 3 and figure 2). Where known, the largest cluster was localised to the lobe of the presumed epileptogenic zone in one, as was the second largest cluster of a further two patients.

DISCUSSION

Using [^{18}F]GE-179 PET, we identified global increases in NMDA receptor ion channel availability for patients with focal epilepsies who were not taking antidepressants, whereas tracer binding was globally decreased in those patients with epilepsy who were also taking antidepressant drugs. Increases in [^{18}F]GE-179 V_T are consistent with an increase in activated/open NMDA receptors in actively discharging cortex as shown in pre-clinical work.^{21 22} We suggest that increased NMDA activation in patients with chronic focal epilepsy extends beyond the presumed epileptogenic zone and is a global phenomenon, as reflected in the increased global V_T .

Our group analyses did not identify any focal redistribution of activated NMDA receptor availability in this group of heterogeneous patients with focal epilepsies arising from different cortical locations; this is perhaps not surprising given the heterogeneity and small sample size. For this pilot study, patients were selected based on the frequency of IEDs on previous EEGs, to maximise our chances of detecting increases in NMDA binding. Concordance of [^{18}F]GE-179 foci with EEG, structural and functional imaging in individual patients is difficult to assess

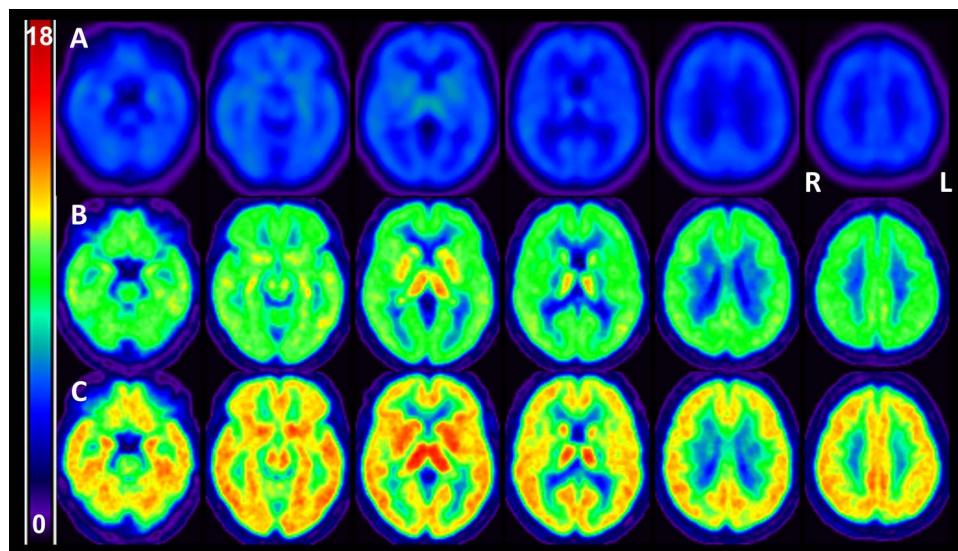


Figure 1 [^{18}F]GE-179 V_T by subgroup. The top row (A) depicts the mean [^{18}F]GE-179 V_T patients with focal epilepsy who were taking an antidepressant drug; the middle row (B) for the controls; and the bottom row (C) for the patients with focal epilepsy who were not taking an antidepressant drug. Images are displayed according to radiological convention (ie, 'left is right'). L, left; R, right; V_T , volume-of-distribution.

Table 2 Focal decreases in [¹⁸F]GE-179 V_T—individual patients versus 10 controls

Patient ID	Probable localisation (EEG)	MRI	[¹⁸ F]GE-179 V _T decreases	Cluster size (mm ³ /voxels)	Peak voxel coordinates (x, y, z; mm)	Z _{max}	Cluster level p (uncorrected)
4	Multifocal	Multiple tubers	R parietal	4864/608	62–32 38	3.62	0.002
7	R frontal	Negative	L temporal	3968/496	–58–20–22	4.32	0.003
			R frontal	1704/213	10 20–20	3.89	0.040

The cluster(s) reaching significance at p<0.05 uncorrected are listed. The contribution of global V_T to variance was removed by an ANCOVA by group. ANCOVA, analysis of covariance; EEG, electroencephalography; ID, identifying number; L/R, left/right; mm, millimeters; MRI, magnetic resonance imaging; V_T, volume-of-distribution.

given that some of our cohort had normal or EEG-discordant MRI and poorly defined epileptogenic zones: the epileptogenic zone could not be localised using high-resolution MRI, ictal EEG recordings, magnetoencephalography and fluoro-deoxyglucose PET (FDG-PET) in four patients, and could only be lateralised to one lobe in four of the remaining seven patients. In contrast, our individual [¹⁸F]GE-179 PET analysis identified focal clusters of increased NMDA receptor activation in four patients with focal epilepsy, and these were concordant with the location of the presumed epileptogenic zone in two of those three patients, in whom this could be lateralised to one lobe. Patient 1 was one of the best-localised cases in our cohort, having concordant scalp EEG, [¹⁸F]FDG-PET and ictal single-photon emission CT findings. An intracranial EEG recording over the left temporal lobe revealed a diffuse ictal onset, consistent with spread from a nearby lobe. Consistent with these data, a large cluster of increased V_T was observed in the left frontal lobe for this participant.

Interestingly, a focal increase in [¹⁸F]GE-179 V_T was seen in the brainstem of the patient with ictal pupillary hippus in addition to left and right temporal lobe increases (patient 4²³). The patient is now seizure-free after resection of the tuber in the right parieto-occipital region. Our finding suggests the unusual ictal manifestation might result from a broad epileptogenic network that encompassed the brainstem in close proximity to the nuclei of the oculomotor (III) nerve.

The proportion of NMDA receptors that are active in the resting physiological state is unknown, and the power to detect subtle regional changes in channel opening superimposed on global differences in binding, induced by the epileptic brain or reduced by concomitant use of antidepressants, was limited by our small sample size and conservative thresholds. Studies of unequivocally unifocal epilepsies are now needed to determine whether focal increases of [¹⁸F]GE-179 binding may be apparent at epileptic foci. If these initial findings are replicated,

[¹⁸F]GE-179 PET might find clinical application in the presurgical localisation of epileptogenic foci in patients with refractory focal epilepsy with non-contributory MRI.

Interictal regional cerebral blood flow (rCBF) studies usually show reduced perfusion in focal epilepsy,⁴¹ and significant increases in rCBF scans were only seen with prolonged discharges of 8–105 seconds after electrostimulation.⁴² Our findings are unlikely to reflect changes in cerebral blood flow (ie, altered [¹⁸F]GE-179 availability) as decreased perfusion in the epileptogenic zone would likely result in decreased [¹⁸F]GE-179 availability and thus V_T. While NMDA receptor ion channel opening and the excitatory postsynaptic current are extremely rapid events,^{43–44} grey matter uptake and the metabolism of [¹⁸F]GE-179 occurs over minutes.³⁸ Hence, we interpret the V_T data as indicative of the integrated extent of NMDA receptor activation during the tracer uptake phase (first 30 min) of the scan.

The lack of focal increases in V_T for 7 of the 11 patients with focal epilepsy did not appear to relate to the frequency of scalp-detected IEDs. Global [¹⁸F]GE-179 V_T was not significantly correlated with the number of IEDs in the first 30 min following injection. The true extent of epileptic activity will not be detectable on scalp EEG, which may explain the lack of correlation between focal spike activity and global [¹⁸F]GE-179 uptake. Moreover, it would be oversimplistic to assume a linear relation between global [¹⁸F]GE-179 V_T and IED frequency. We expect that NMDA receptors involved in generation of the IED would rapidly internalise^{45–47} or desensitise following their activation.^{48–50} Individual short IEDs would be very difficult to visualise over a 90 min PET scan with [¹⁸F]GE-179. We assume any observed increase of [¹⁸F]GE-179 binding to be related to underlying generalised baseline overactivity, rather than to transient NMDA channel opening over a few milliseconds.

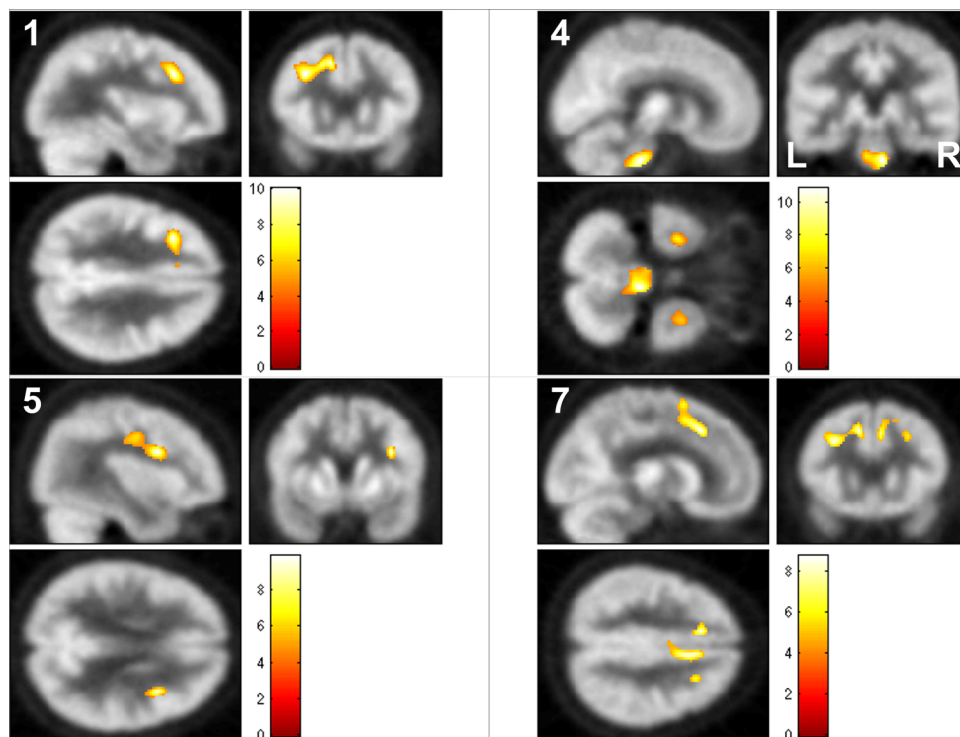
In the only other in vivo PET study of NMDA ion channel activity in epilepsy, Kumlien⁵¹ did not detect focal increases in receptor availability using (S)-[N-methyl-¹¹C]ketamine.

Table 3 Focal increases in [¹⁸F]GE-179 V_T—individual patients versus 10 controls

Patient ID	Probable localisation (EEG)	MRI	[¹⁸ F]GE-179 V _T increases	Cluster size (mm ³ /voxels)	Peak voxel coordinates (x, y, z; mm)	Z _{max}	Cluster level p (uncorrected)
1	L frontotemporal	R IFG lesion	L frontal	7000/875	–322 234	4.46	<0.001
4	Multifocal	Multiple tubers	Brainstem	5152/644	08–28–38	4.58	0.001
			L temporal	3264/408	–32 04–36	4.09	0.007
			R temporal	1720/215	18 04–30	3.97	0.039
5	Bilateral temporal L>R	Negative	R frontal	3360/420	381 024	4.43	0.006
7	R frontal	Negative	L frontal	5904/738	–122 242	4.23	0.001
			R frontal	4512/564	061 840	4.23	0.002

The cluster(s) reaching significance at p<0.05 uncorrected are listed. The contribution of global V_T to variance was removed by an ANCOVA by group. Underline indicates concordance between the cluster of increase and the location of the presumed epileptogenic zone, where known. ANCOVA, analysis of covariance; EEG, electroencephalography; ID, identifying number; IFG, inferior frontal gyrus; L/R, left/right; mm, millimeters; MRI, magnetic resonance imaging; V_T, volume-of-distribution.

Figure 2 Focal increases in [^{18}F]GE-179 V_T (1 vs 10 controls, $p < 0.001$ voxelwise uncorrected). Top row, from top-left: patient 1, patient 4; bottom row, from left: patient 5, patient 7. Images are displayed according to neurological convention (ie, 'left is left'). For simplicity, only significant clusters ($p < 0.05$) are overlaid onto a custom [^{18}F]GE-179 template. L, left; R, right; V_T , volume-of-distribution.



Interestingly, each participant in that temporal lobe epilepsy (TLE) cohort showed temporal hypometabolism on [^{18}F]FDG-PET, so the results could have been significantly confounded by cerebral hypoperfusion. Four of our patients had normal [^{18}F]FDG-PET, one of whom had a focal increase in [^{18}F]GE-179 V_T . The absence of hypometabolism may have facilitated visualisation of activated NMDA receptors in our cohort. Alternatively, our cohort might have had more actively spiking cortex, and thus possibly greater NMDA receptor activation.

A striking and unanticipated finding of our study was reduced V_T in the small number of patients with focal epilepsies who were taking antidepressants, suggesting that either depression or the use of antidepressant drug constituted an additional confounder. Our finding is in keeping with the mounting evidence for the action of antidepressant drugs at NMDA receptors including tricyclics^{52–56} and serotonin-selective reuptake inhibitors^{54 55 57 58} such as fluoxetine,^{57 59–61} the two classes used by patients in this study. While our finding may represent the first in vivo evidence of an NMDA-mediated mechanism of action of antidepressants (the extent of which is likely to vary between drugs), caution is warranted as, given the sample size, the result could be due to random chance. Hence, in order to better understand [^{18}F]GE-179 binding, a larger study is required, which would compare [^{18}F]GE-179 binding between unmedicated patients with depression and those taking antidepressants. It will also be of interest to ascertain whether AEDs that are characterised by use-dependent inhibition of NMDA receptor function (such as felbamate^{62 63}), or certain combinations of AEDs, affect NMDA receptor binding.

A recent multicentre review concluded that administration of the NMDA receptor antagonist ketamine 'likely' or 'possibly' contributed to the achievement of control in 32% of (19 of 60) episodes, whereas treatment was discontinued due to adverse events in approximately 8%.⁶⁴ Smaller series have reported greater success.^{65 66} Similarly to [^{18}F]GE-179,³⁸ ketamine binds to the PCP site in the NMDA ion channel pore.⁶⁷ Hence, the

demonstration of increased NMDA receptor activation via [^{18}F]GE-179 PET might aid the stratification of patients with refractory status epilepticus.

Limitations of this proof-of-principle study include the small and heterogeneous population. While [^{18}F]GE-179 has a low affinity for other CNS receptors in vitro,³⁸ we cannot exclude the possibility that non-specific binding confounded the analyses. Further studies are needed to confirm our findings, and to quantify reproducibility and specificity of [^{18}F]GE-179 binding in vivo.

In conclusion, our results provide in vivo evidence for widespread increases in activated NMDA receptor availability in patients with focal epilepsies. A PET radioligand that reliably demonstrates focal increases in NMDA receptor activity in humans in vivo would hold potential as a method to investigate epileptogenesis in vivo after brain injury, to investigate the role of activated NMDA receptor availability in other conditions, and possibly in the presurgical investigation of patients with refractory focal epilepsy.

Author affiliations

¹Division of Neuroscience, Department of Medicine, Imperial College London, London, UK

²Medical Research Council Clinical Sciences Centre, London, UK

³Division of Imaging Sciences & Biomedical Engineering, Faculty of Life Sciences & Medicine, King's College London, London, UK

⁴Department of Clinical and Experimental Epilepsy, UCL Institute of Neurology, London, UK

⁵MRI Unit, Epilepsy Society, Chalfont St. Peter, UK

⁶The Neurodis Foundation, CERMEP Imagerie du Vivant, Lyon, France

⁷Department of Clinical Neurophysiology, Great Ormond Street Hospital for Children NHS Trust, London, UK

⁸GE Healthcare plc, The Grove Centre, Amersham, UK

⁹National Hospital for Neurology and Neurosurgery, London, UK

¹⁰Institute of Clinical Medicine, Aarhus University, Aarhus, Denmark

Acknowledgements The authors thank the staff of Hammersmith Imanet Limited and MDx Discovery for their assistance with [^{18}F]GE-179 production and data acquisition, and similarly the radiographers of Epilepsy Society. They thank all the participants.

Contributors CJM contributed to the design of the study, was primarily responsible for data acquisition and analysis, and prepared the manuscript drafts. MJK contributed to conceptualisation and design of the study, data review and manuscript revision. AH contributed to data analysis and review, and manuscript revision. DARB contributed to PET data acquisition and manuscript revision. RMP reported the EEG data. SL contributed to conceptualisation and design of the study, and facilitated production of the radioligand at Hammersmith Imanet Ltd. PAJ and WT contributed to conceptualisation and design of the study, data review and manuscript revision. They both also facilitated production of the radioligand at Hammersmith Imanet Ltd. CM reported on the MRIs. MRS assisted with MRI acquisition, and co-registration of MR and PET data sets. DJB contributed to conceptualisation and design of the study, submissions to regulatory bodies and manuscript review. JSD contributed to conceptualisation and design of the study, data review and manuscript revision. JSD was primarily responsible for identification of the patients with focal epilepsy.

Funding This study was supported by the Medical Research Council (MRC) Clinical Sciences Centre and GE Healthcare plc. Open access fee and colour figures fees are paid by GE Healthcare plc.

Competing interests CJM, MJK and JSD are grateful for support from the NIHR Biomedical Research Centre funding scheme to the UCLH/UCL BRC. Authors affiliated with the Division of Neuroscience, Department of Medicine, Imperial College London, London, UK, are grateful for support by the NIHR Biomedical Research Centre. SL, PAJ, WT and DJB are or were employees of GE Healthcare plc at the time of the study, which they report as a conflict of interest. CJM, JSD and MJK have received fees from GE Healthcare plc. CJM was supported by a MRC Doctoral Training Account (3+1) studentship that was awarded by Imperial College London. JSD and MJK were supported by Epilepsy Society, UCL, UCL Hospitals and UCLH/UCL Biomedical Research Centre. JSD has received fees for organising symposia and lecturing for UCB Pharma, Eisai, GSK and GE Healthcare. AH was supported by an MRC Clinician Scientist Fellowship (G108/585) and by the Neurodis Foundation.

Ethics approval Royal Marsden Hospital National Health Service Research Ethics Committee.

Provenance and peer review Not commissioned; externally peer reviewed.

Data sharing statement The authors have submitted all major results from the study for publication. Unpublished data consist of individual imaging data sets and are only available to the investigators at present. Any request for data can be addressed to the corresponding author; any data sharing will be subject to restrictions based on anonymisation rules.

Open Access This is an Open Access article distributed in accordance with the Creative Commons Attribution Non Commercial (CC BY-NC 4.0) license, which permits others to distribute, remix, adapt, build upon this work non-commercially, and license their derivative works on different terms, provided the original work is properly cited and the use is non-commercial. See: <http://creativecommons.org/licenses/by-nc/4.0/>

REFERENCES

- Monaghan DT, Bridges RJ, Cotman CW. The excitatory amino acid receptors: their classes, pharmacology, and distinct properties in the function of the central nervous system. *Annu Rev Pharmacol Toxicol* 1989;29:365–402.
- Wollmuth LP, Sobolevsky AI. Structure and gating of the glutamate receptor ion channel. *Trends Neurosci* 2004;27:321–8.
- Leker RR, Shohami E, Leker RR, et al. Cerebral ischemia and trauma-different etiologies yet similar mechanisms: neuroprotective opportunities. *Brain Res Rev* 2002;39:55–73.
- Sattler R, Xiang ZG, Lu WY, et al. Specific coupling of NMDA receptor activation to nitric oxide neurotoxicity by PSD-95 protein. *Science* 1999;284:1845–8.
- Waxman EA, Lynch DR, Waxman EA, et al. N-methyl-D-aspartate receptor subtypes: multiple roles in excitotoxicity and neurological disease. *Neuroscientist* 2005;11:37–49.
- Sanacora G, Treccani G, Popoli M. Towards a glutamate hypothesis of depression: an emerging frontier of neuropsychopharmacology for mood disorders. *Neuropharmacology* 2012;62:63–77.
- Musazzi L, Treccani G, Mallei A, et al. The action of antidepressants on the glutamate system: regulation of glutamate release and glutamate receptors. *Biol Psychiatry* 2013;73:1180–8.
- Lau CG, Zukin RS, Lau CG, et al. NMDA receptor trafficking in synaptic plasticity and neuropsychiatric disorders. *Nat Rev Neurosci* 2007;8:413–26.
- Turski L, Niemann W, Stephens DN. Differential effects of antiepileptic drugs and beta-carbolines on seizures induced by excitatory amino acids. *Neuroscience* 1990;39:799–807.
- Chiamulera C, Costa S, Reggiani A. Effect of NMDA- and strychnine-insensitive glycine site antagonists on NMDA-mediated convulsions and learning. *Psychopharmacology (Berl)* 1990;102:551–2.
- Scerrati M, Onofri M, Pacifici L, et al. Electroencephalographic and behavioural analysis of systemic kainic acid-induced epilepsy in the rat. *Drugs Exp Clin Res* 1986;12:671–80.
- De Deyn PP, D'Hooge R, Marescau B, et al. Chemical models of epilepsy with some reference to their applicability in the development of anticonvulsants. *Epilepsy Res* 1992;12:87–110.
- Brandt C, Potschka H, Loscher W, et al. N-methyl-D-aspartate receptor blockade after status epilepticus protects against limbic brain damage but not against epilepsy in the kainate model of temporal lobe epilepsy. *Neuroscience* 2003;118:727–40.
- Anderson WW, Lewis DV, Swartzwelder HS, et al. Magnesium-free medium activates seizure-like events in the rat hippocampal slice. *Brain Res* 1986;398:215–19.
- Mody I, Lambert JD, Heinemann U. Low extracellular magnesium induces epileptiform activity and spreading depression in rat hippocampal slices. *J Neurophysiol* 1987;57:869–88.
- Baldino F Jr, Wolfson B, Heinemann U, et al. An N-methyl-D-aspartate (NMDA) receptor antagonist reduces bicuculline-induced depolarization shifts in neocortical explant cultures. *Neurosci Lett* 1986;70:101–5.
- Uchida K. Excitatory amino acid receptors appear to mediate paroxysmal depolarizing shifts in rat neocortical neurons in vitro. *Brain Res* 1992;577:151–4.
- Croucher MJ, Bradford HF, Sunter DC, et al. Inhibition of the development of electrical kindling of the prepyriform cortex by daily focal injections of excitatory amino acid antagonists. *Eur J Pharmacol* 1988;152:29–38.
- Croucher MJ, Cotterell KL, Bradford HF. Competitive NMDA receptor antagonists raise electrically kindled generalized seizure thresholds. *Neurochem Res* 1992;17:409–13.
- Vezzani A, Wu HQ, Moneta E, et al. Role of the N-methyl-D-aspartate-type receptors in the development and maintenance of hippocampal kindling in rats. *Neurosci Lett* 1988;87:63–8.
- Savage DD, Werling LL, Nadler JV, et al. Selective increase in L-[3H]glutamate binding to a quisqualate-sensitive site on hippocampal synaptic membranes after angular bundle kindling. *Eur J Pharmacol* 1982;85:255–6.
- Yeh GC, Bonhaus DW, Nadler JV, et al. N-methyl-D-aspartate receptor plasticity in kindling: quantitative and qualitative alterations in the N-methyl-D-aspartate receptor-channel complex. *Proc Natl Acad Sci USA* 1989;86:8157–60.
- Geddes JW, Cahlan LD, Cooper SM, et al. Altered distribution of excitatory amino acid receptors in temporal lobe epilepsy. *Exp Neurol* 1990;108:214–20.
- Hosford DA, Crain BJ, Cao Z, et al. Increased AMPA-sensitive quisqualate receptor binding and reduced NMDA receptor binding in epileptic human hippocampus. *J Neurosci* 1991;11:428–34.
- Louvel J, Pumain R, Avoli M, et al. GABA inhibition controls the calcium flows during NMDA-dependent epileptiform activity in human epileptogenic neocortex. *Epilepsy Res Suppl* 1996;12:293–300.
- Cohen I, Navarro V, Clemenceau S, et al. On the origin of interictal activity in human temporal lobe epilepsy in vitro. *Science* 2002;298:1418–21.
- Huberfeld G, Menendez de la Prida L, Pallud J, et al. Glutamatergic pre-ictal discharges emerge at the transition to seizure in human epilepsy. *Nat Neurosci* 2011;14:627–34.
- Franck JE, Pokorny J, Kunkel DD, et al. Physiologic and morphologic characteristics of granule cell circuitry in human epileptic hippocampus. *Epilepsia* 1995;36:543–58.
- Isokawa M, Fried I. Extracellular slow negative transient in the dentate gyrus of human epileptic hippocampus in vitro. *Neuroscience* 1996;72:31–7.
- Kim YI, Peacock WJ, Dudek FE. Properties and synaptic mechanisms of bicuculline-induced epileptiform bursts in neocortical slices from children with intractable epilepsy. *J Neurophysiol* 1993;70:1759–66.
- Wilson CL, Maidment NT, Shomer MH, et al. Comparison of seizure related amino acid release in human epileptic hippocampus versus a chronic, kainate rat model of hippocampal epilepsy. *Epilepsy Res* 1996;26:245–54.
- Carlson H, Ronne-Engstrom E, Ungerstedt U, et al. Seizure related elevations of extracellular amino acids in human focal epilepsy. *Neurosci Lett* 1992;140:30–2.
- During MJ, Spencer DD. Extracellular hippocampal glutamate and spontaneous seizure in the conscious human brain. *Lancet* 1993;341:1607–10.
- Thomas PM, Phillips JP, O'Connor WT. Hippocampal microdialysis during spontaneous intraoperative epileptiform activity. *Acta Neurochir (Wien)* 2004;146:143–51.
- Hamberger A, Nyström B, Larsson S, et al. Amino acids in the neuronal microenvironment of focal human epileptic lesions. *Epilepsy Res* 1991;9:32–43.
- Ronne-Engstrom E, Hillered L, Flink R, et al. Intracerebral microdialysis of extracellular amino acids in the human epileptic focus. *J Cereb Blood Flow Metab* 1992;12:873–6.
- Thomas PM, Phillips JP, Delanty N, et al. Elevated extracellular levels of glutamate, aspartate and gamma-aminobutyric acid within the intraoperative, spontaneously epileptiform human hippocampus. *Epilepsy Res* 2003;54:73–9.
- McGinnity CJ, Hammers A, Riano Barros DA, et al. Initial evaluation of 18F-GE-179, a putative PET tracer for activated N-methyl D-aspartate receptors. *J Nucl Med* 2014;55:423–30.
- Waterhouse RN, Waterhouse RN. Imaging the PCP site of the NMDA ion channel. *Nucl Med Biol* 2003;30:869–78.
- Centeno M, Feldmann M, Harrison NA, et al. Epilepsy causing pupillary hippus: an unusual semiology. *Epilepsia* 2011;52:e93–6.

- 41 Devous MD, Thisted RA, Morgan GF, *et al.* SPECT brain imaging in epilepsy: a meta-analysis. *J Nucl Med* 1998;39:285–93.
- 42 Kahane P, Merlet I, Gregoire MC, *et al.* An H(2) (15)O-PET study of cerebral blood flow changes during focal epileptic discharges induced by intracerebral electrical stimulation. *Brain* 1999;122(Pt 10):1851–65.
- 43 Lester RA, Jahr CE. NMDA channel behavior depends on agonist affinity. *J Neurosci* 1992;12:635–43.
- 44 Korinek M, Sedlacek M, Cais O, *et al.* Temperature dependence of N-methyl-D-aspartate receptor channels and N-methyl-D-aspartate receptor excitatory postsynaptic currents. *Neuroscience* 2010;165:736–48.
- 45 Nong Y, Huang YQ, Ju W, *et al.* Glycine binding primes NMDA receptor internalization. *Nature* 2003;422:302–7.
- 46 Roche KW, Standley S, McCallum J, *et al.* Molecular determinants of NMDA receptor internalization. *Nat Neurosci* 2001;4:794–802.
- 47 Han L, Campanucci VA, Cooke J, *et al.* Identification of a single amino acid in GluN1 that is critical for glycine-primed internalization of NMDA receptors. *Mol Brain* 2013;6:36.
- 48 Vyklický L, Benveniste M, Mayer ML. Modulation of N-methyl-D-aspartate receptor desensitization by glycine in mouse cultured hippocampal neurones. *J Physiol* 1990;428:313–31.
- 49 Lin F, Stevens CF. Both open and closed NMDA receptor channels desensitize. *J Neurosci* 1994;14:2153–60.
- 50 Nahum-Levy R, Lipinski D, Shavit S, *et al.* Desensitization of NMDA receptor channels is modulated by glutamate agonists. *Biophys J* 2001;80:2152–66.
- 51 Kumlien E. NMDA-receptor activity visualized with (S)-[N-methyl-11C]ketamine and positron emission tomography in patients with medial temporal lobe epilepsy. *Epilepsia* 1999;40:30–7.
- 52 Boyer PA, Skolnick P, Fossom LH. Chronic administration of imipramine and citalopram alters the expression of NMDA receptor subunit mRNAs in mouse brain: a quantitative in situ hybridization study. *J Mol Neurosci* 1998;10:219–33.
- 53 Tokarski K, Bobula B, Wabno J, *et al.* Repeated administration of imipramine attenuates glutamatergic transmission in rat frontal cortex. *Neuroscience* 2008;153:789–95.
- 54 Paul IA, Nowak G, Layer RT, *et al.* Adaptation of the N-methyl-D-aspartate receptor complex following chronic antidepressant treatments. *J Pharmacol Exp Ther* 1994;269:95–102.
- 55 Skolnick P, Layer RT, Popik P, *et al.* Adaptation of N-methyl-D-aspartate (NMDA) receptors following antidepressant treatment: implications for the pharmacotherapy of depression. *Pharmacopsychiatry* 1996;29:23–6.
- 56 Nowak G, Trullas R, Layer RT, *et al.* Adaptive changes in the N-methyl-D-aspartate receptor complex after chronic treatment with imipramine and 1-aminocyclopropanecarboxylic acid. *J Pharmacol Exp Ther* 1993;265:1380–6.
- 57 Nowak G, Legutko B, Skolnick P, *et al.* Adaptation of cortical NMDA receptors by chronic treatment with specific serotonin reuptake inhibitors. *Eur J Pharmacol* 1998;342:367–70.
- 58 Ryan B, Musazzi L, Mallei A, *et al.* Remodelling by early-life stress of NMDA receptor-dependent synaptic plasticity in a gene-environment rat model of depression. *Int J Neuropsychopharmacol* 2009;12:553–9.
- 59 Pittaluga A, Raiteri L, Longordo F, *et al.* Antidepressant treatments and function of glutamate ionotropic receptors mediating amine release in hippocampus. *Neuropharmacology* 2007;53:27–36.
- 60 Musazzi L, Milanese M, Farisello P, *et al.* Acute stress increases depolarization-evoked glutamate release in the rat prefrontal/frontal cortex: the dampening action of antidepressants. *PLoS ONE* 2010;5:e8566.
- 61 Bonanno G, Giambelli R, Raiteri L, *et al.* Chronic antidepressants reduce depolarization-evoked glutamate release and protein interactions favoring formation of SNARE complex in hippocampus. *J Neurosci* 2005;25:3270–9.
- 62 Kuo CC, Lin BJ, Chang HR, *et al.* Use-dependent inhibition of the N-methyl-D-aspartate currents by felbamate: a gating modifier with selective binding to the desensitized channels. *Mol Pharmacol* 2004;65:370–80.
- 63 Chang HR, Kuo CC. Characterization of the gating conformational changes in the felbamate binding site in NMDA channels. *Biophys J* 2007;93:456–66.
- 64 Gaspard N, Foreman B, Judd LM, *et al.* Intravenous ketamine for the treatment of refractory status epilepticus: a retrospective multicenter study. *Epilepsia* 2013;54:1498–503.
- 65 Rosati A, L'Erario M, Ilvento L, *et al.* Efficacy and safety of ketamine in refractory status epilepticus in children. *Neurology* 2012;79:2355–8.
- 66 Synowiec AS, Singh DS, Yenugadhati V, *et al.* Ketamine use in the treatment of refractory status epilepticus. *Epilepsy Res* 2013;105:183–8.
- 67 MacDonald JF, Bartlett MC, Mody I, *et al.* Actions of ketamine, phencyclidine and MK-801 on NMDA receptor currents in cultured mouse hippocampal neurones. *J Physiol* 1991;432:483–508.