

# UC Irvine

## UC Irvine Previously Published Works

### Title

A Luminous Quasar at Redshift 7.642

### Permalink

<https://escholarship.org/uc/item/7h7758t8>

### Journal

The Astrophysical Journal Letters, 907(1)

### ISSN

2041-8205

### Authors

Wang, Feige  
Yang, Jinyi  
Fan, Xiaohui  
[et al.](#)

### Publication Date

2021

### DOI

10.3847/2041-8213/abd8c6

### Copyright Information

This work is made available under the terms of a Creative Commons Attribution License, available at <https://creativecommons.org/licenses/by/4.0/>

Peer reviewed

## A Luminous Quasar at Redshift 7.642

FEIGE WANG,<sup>1,\*</sup> JINYI YANG,<sup>1,†</sup> XIAOHUI FAN,<sup>1</sup> JOSEPH F. HENNAWI,<sup>2,3</sup> AARON J. BARTH,<sup>4</sup> EDUARDO BANADOS,<sup>3</sup>  
FUYAN BIAN,<sup>5</sup> KONSTANTINA BOUTSIA,<sup>6</sup> THOMAS CONNOR,<sup>7</sup> FREDERICK B. DAVIES,<sup>8,3</sup> ROBERTO DECARLI,<sup>9</sup>  
ANNA-CHRISTINA EILERS,<sup>10,\*</sup> EMANUELE PAOLO FARINA,<sup>11</sup> RICHARD GREEN,<sup>1</sup> LINHUA JIANG,<sup>12</sup> JIANG-TAO LI,<sup>13</sup>  
CHIARA MAZZUCHELLI,<sup>5</sup> RICCARDO NANNI,<sup>2</sup> JAN-TORGE SCHINDLER,<sup>3</sup> BRAM VENEMANS,<sup>3</sup> FABIAN WALTER,<sup>3</sup>  
XUE-BING WU,<sup>12,14</sup> AND MINGHAO YUE<sup>1</sup>

<sup>1</sup>*Steward Observatory, University of Arizona, 933 North Cherry Avenue, Tucson, AZ 85721, USA*

<sup>2</sup>*Department of Physics, University of California, Santa Barbara, CA 93106-9530, USA*

<sup>3</sup>*Max Planck Institut für Astronomie, Königstuhl 17, D-69117, Heidelberg, Germany*

<sup>4</sup>*Department of Physics and Astronomy, University of California, Irvine, CA 92697, USA*

<sup>5</sup>*European Southern Observatory, Alonso de Córdova 3107, Casilla 19001, Vitacura, Santiago 19, Chile*

<sup>6</sup>*Las Campanas Observatory, Carnegie Observatories, Colina El Pino, Casilla 601, La Serena, Chile*

<sup>7</sup>*Jet Propulsion Laboratory, California Institute of Technology, 4800 Oak Grove Drive, Pasadena, CA 91109, USA*

<sup>8</sup>*Lawrence Berkeley National Laboratory, 1 Cyclotron Rd, Berkeley, CA 94720, USA*

<sup>9</sup>*INAF – Osservatorio di Astrofisica e Scienza dello Spazio di Bologna, via Gobetti 93/3, I-40129 Bologna, Italy*

<sup>10</sup>*MIT-Kavli Institute for Astrophysics and Space Research, 77 Massachusetts Avenue, Building 37, Room 664L, Cambridge, Massachusetts 02139, USA*

<sup>11</sup>*Max Planck Institut für Astrophysik, Karl-Schwarzschild-Straße 1, D-85748, Garching bei München, Germany*

<sup>12</sup>*Kavli Institute for Astronomy and Astrophysics, Peking University, Beijing 100871, China*

<sup>13</sup>*Department of Astronomy, University of Michigan, 311 West Hall, 1085 S. University Ave, Ann Arbor, MI, 48109-1107, USA*

<sup>14</sup>*Department of Astronomy, School of Physics, Peking University, Beijing 100871, China*

### ABSTRACT

Distant quasars are unique tracers to study the formation of the earliest supermassive black holes (SMBHs) and the history of cosmic reionization. Despite extensive efforts, only two quasars have been found at  $z \geq 7.5$ , due to a combination of their low spatial density and the high contamination rate in quasar selection. We report the discovery of a luminous quasar at  $z = 7.642$ , J0313–1806, the most distant quasar yet known. This quasar has a bolometric luminosity of  $3.6 \times 10^{13} L_{\odot}$ . Deep spectroscopic observations reveal a SMBH with a mass of  $(1.6 \pm 0.4) \times 10^9 M_{\odot}$  in this quasar. The existence of such a massive SMBH just  $\sim 670$  million years after the Big Bang challenges significantly theoretical models of SMBH growth. In addition, the quasar spectrum exhibits strong broad absorption line (BAL) features in C IV and Si IV, with a maximum velocity close to 20% of the speed of light. The relativistic BAL features, combined with a strongly blueshifted C IV emission line, indicate that there is a strong active galactic nucleus (AGN) driven outflow in this system. ALMA observations detect the dust continuum and [C II] emission from the quasar host galaxy, yielding an accurate redshift of  $7.6423 \pm 0.0013$  and suggesting that the quasar is hosted by an intensely star-forming galaxy, with a star formation rate of  $\sim 200 M_{\odot} \text{ yr}^{-1}$  and a dust mass of  $\sim 7 \times 10^7 M_{\odot}$ . Followup observations of this reionization-era BAL quasar will provide a powerful probe of the effects of AGN feedback on the growth of the earliest massive galaxies.

### 1. INTRODUCTION

Luminous high-redshift quasars are key probes of the history of cosmic reionization. Deep spectroscopy of

$z > 6$  quasars indicates that the intergalactic medium (IGM) is significantly neutral at  $z \gtrsim 7$  (e.g. Bañados et al. 2018; Davies et al. 2018; Wang et al. 2020a; Yang et al. 2020a) but highly ionized at  $z \lesssim 6$  (e.g. Yang et al. 2020b), providing crucial information to map the cosmic reionization history in a way complementary to the cosmic microwave background (CMB) integral constraint on reionization from measurements of the elec-

Corresponding author: Feige Wang  
feigewang@email.arizona.edu

\* Hubble Fellow

† Strittmatter Fellow

tron scattering optical depth (e.g. Planck Collaboration et al. 2020).

In addition, the earliest supermassive black holes (SMBHs), the engines of the most distant quasars, are crucial for understanding the formation mechanisms of the first generation black hole seeds (see Inayoshi et al. 2020, for a recent review). A billion solar mass SMBH at  $z \sim 7$ , having grown at the Eddington limit since formation, requires a seed black hole of mass  $\sim 1000 M_{\odot}$  at the time the first luminous object formed in the Universe (i.e.,  $z \sim 30$ , Tegmark et al. 1997). This growth corresponds to a factor of  $\sim 10^6$  increase in mass within a mere  $\sim 650$  Myr. The recent discovery of a  $1.5 \times 10^9 M_{\odot}$  SMBH in a luminous quasar at  $z = 7.52$  poses the most stringent constraints yet on the masses of the seed black holes (Yang et al. 2020a).

After a decade of industrious searches, a sample of more than 50 quasars now exists at  $6.5 < z < 7$  (e.g. Mazzucchelli et al. 2017; Wang et al. 2019; Yang et al. 2019; Reed et al. 2019; Matsuoka et al. 2019a), enabling the first statistical studies of the early accreting SMBHs deep into the epoch of reionization (Wang et al. 2019). However, the sample of quasars at  $z > 7$  is still very limited, since the Ly $\alpha$  emission is redshifted to near-infrared wavelengths, making both imaging and spectroscopic observations more challenging. In addition, the number density of  $z > 7$  quasars is low (Wang et al. 2019) while the contaminants, Galactic cool dwarfs and early type galaxies, are far more numerous. To date, there are only seven quasars known at  $z > 7$  (Mortlock et al. 2011; Bañados et al. 2018; Wang et al. 2018; Yang et al. 2019, 2020a; Matsuoka et al. 2019a,b) with two of them at  $z = 7.5$  (Bañados et al. 2018; Yang et al. 2020a).

In this Letter, we report the discovery of a new quasar J031343.84–180636.4 (hereinafter J0313–1806) at  $z = 7.642$ , the most distant quasar known to date. The existence of a  $1.6 \times 10^9 M_{\odot}$  SMBH and strong outflows in this quasar provide new insights into the formation and the growth of the earliest SMBH. Throughout this Letter, we use a  $\Lambda$ CDM cosmological model with  $H_0 = 70.0 \text{ km s}^{-1} \text{ Mpc}^{-1}$ ,  $\Omega_M = 0.3$ , and  $\Omega_{\Lambda} = 0.7$  and the AB photometric system.

## 2. OBSERVATIONS AND DATA REDUCTION

J0313–1806 was selected as a  $z > 7.2$  quasar candidate from our ongoing reionization-era quasar survey (Wang et al. 2017, 2018, 2019; Yang et al. 2019, 2020a). This survey relies on an imaging dataset that combines optical imaging from Pan-STARRS1 (PS1, Chambers et al. 2016) and the DESI Legacy Imaging Surveys (DELS, Dey et al. 2019), as well as infrared imaging from the

UKIRT Hemisphere Survey (UHS, Dye et al. 2018), the VISTA Hemisphere Survey (VHS, McMahon et al. 2013), and the *Wide-field Infrared Survey Explorer* survey (*WISE*, Wright et al. 2010). J0313–1806 falls into a sky area covered by PS1, DELS, VHS, and *WISE*. It drops out in all of the optical bands but is well detected in the infrared bands (see Figure. 1) with colors of  $z - J > 3.7$ ,  $J - W1 = 0.91$ , and  $W1 - W2 = -0.21$ . The sharp dropout in the  $z$ -band and the blue slope of the continuum make it a promising quasar candidate at  $z > 7.2$ . The detailed photometry for J0313–1806 is listed in Table 1 and the cutout images are shown in Figure 1.

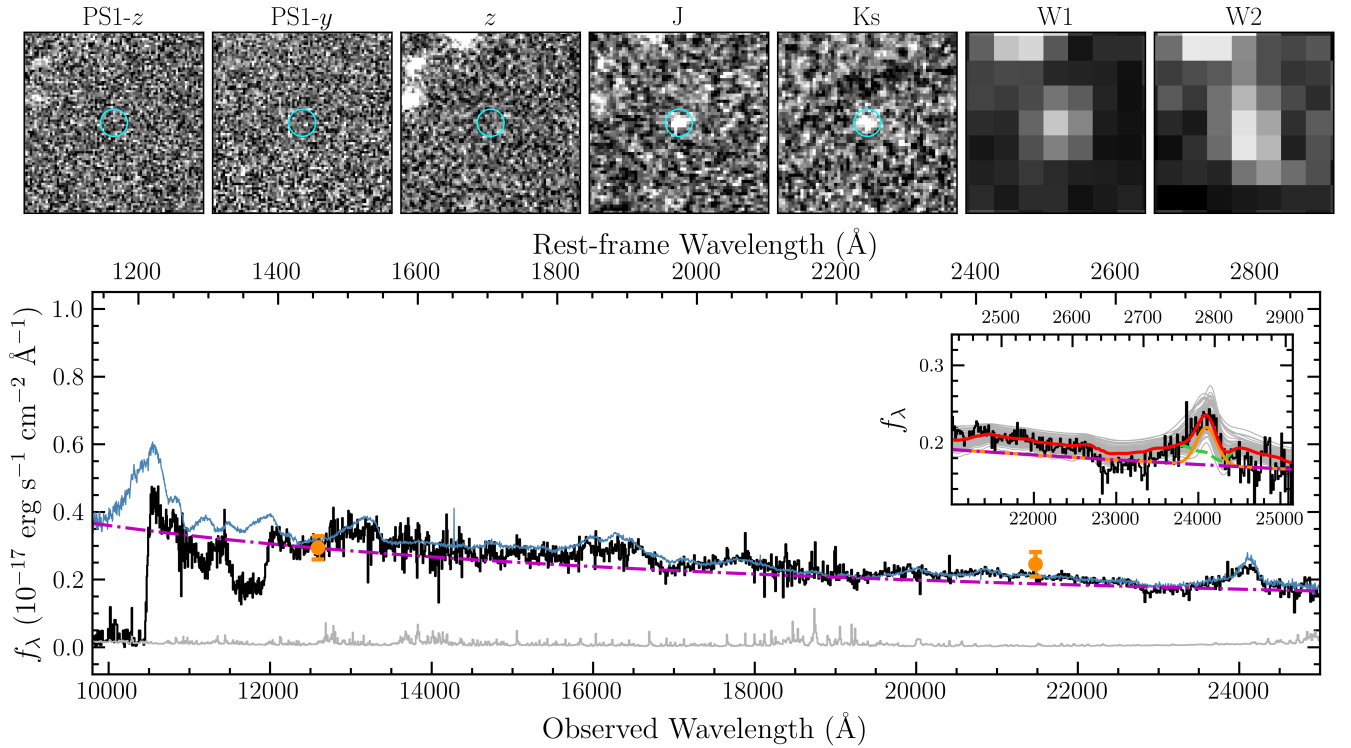
### 2.1. Near-infrared Spectroscopy

The initial spectroscopic observation for J0313–1806 was obtained on 2019 November 04 (UT) with Magellan/FIRE (Simcoe et al. 2010) using the high-throughput longslit mode. A 15-minute exposure shows a clear Lyman break at  $1.048 \mu\text{m}$ , indicating that it is a source at  $z \gtrsim 7.6$ . We then followed this object up with Magellan/FIRE in Echelle mode and with the JH grism on Gemini/Flamingos-2 (Eikenberry et al. 2004) and confirmed it as a high redshift quasar. Since the Mg II emission line, the most reliable line for measuring black hole mass at high redshifts, is redshifted to the edge of the ground-based infrared observation window, extensive spectroscopic observations were obtained with Magellan/FIRE (Echelle mode), Gemini/Flamingos-2 (with HK Grism), Keck/NIRES<sup>1</sup> and Gemini/GNIRS (Elias et al. 2006) to improve the S/N at this wavelength. Detailed information for all the observations is listed in Table 1.

All spectra were reduced with the spectroscopic data reduction pipeline PyPeIt<sup>2</sup> (Prochaska et al. 2020a,b). The pipeline includes flat fielding, wavelength calibration, sky subtraction, optimal extraction, flux calibration and telluric correction. More detailed descriptions of each processing step can be found in Prochaska et al. (2020b) and Wang et al. (2020a). We stacked all spectra obtained from FIRE (Echelle mode), Flamingos-2 (with the HK Grism), NIRRES and GNIRS after binning them to a common wavelength grid with a pixel size of  $\sim 86 \text{ km s}^{-1}$  (similar to the GNIRS native pixel scale). We then scaled the stacked spectrum by carrying out synthetic photometry on the spectrum using the VISTA  $J$ -band filter response curve to match the  $J$ -band photometry for absolute flux calibration. The final spectrum after correcting for Galactic extinction based on

<sup>1</sup> <https://www2.keck.hawaii.edu/inst/nires/>

<sup>2</sup> <https://github.com/pypeit/PyPeIt>



**Figure 1.** Upper panel: image cutouts ( $20'' \times 20''$ , north is up and east is to the left) for J0313–1806 in PS1  $z$ , PS1  $y$ , DELS  $z$ , VISTA  $J$ , VISTA  $K_s$ , WISE W1 and WISE W2 bands. The photometry is given in Table 1. Lower panel: the final stacked spectrum of J0313–1806. In the figure, we re-binned the spectrum by two spectral pixels ( $\sim 173 \text{ km s}^{-1}$ ) for illustration purposes. The black and gray lines represent the Galactic extinction-corrected spectrum and the error vector, respectively. The blue line denotes the quasar composite spectrum constructed with SDSS  $z \sim 2$  quasars having similar C IV blueshifts and line strengths. The purple dashed line denotes the power-law continuum. The orange points are flux densities determined from photometry in the  $J$  and  $K_s$ -bands. The inset panel shows the Mg II line fitting with the purple dot-dashed line denoting the power-law continuum, the green dashed line denoting the pseudo-continuum model (the sum of power law continuum, Fe II emission, and Balmer continuum), the orange line representing the Gaussian fitting of the Mg II line and the red line representing the total fit of pseudo-continuum and Mg II line. The thin grey lines in the insert panel represent the spectral fitting of 100 mock spectra as described in §3.

the dust map of Schlegel et al. (1998) and extinction law of Cardelli et al. (1989) is shown in Figure 1.

## 2.2. ALMA Observations

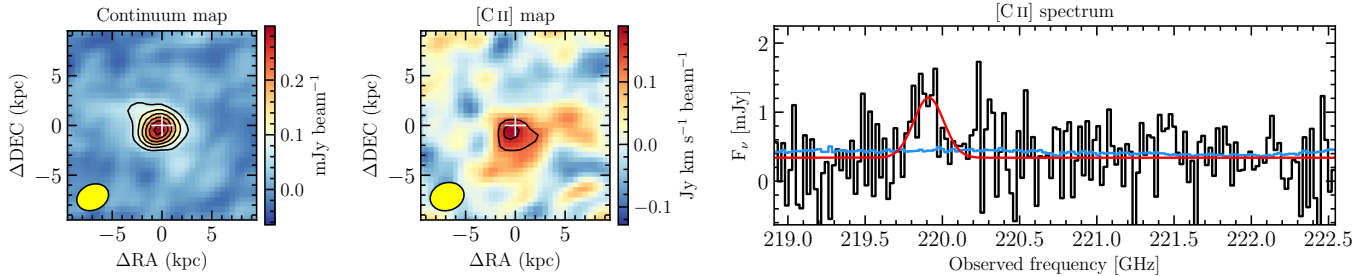
In order to determine the systemic redshift and investigate the host galaxy properties, we observed J0313–1806 with the Atacama Large Millimeter/submillimeter Array (ALMA) in the C43-4 configuration (program ID: 2019.A.00017.S, PI: F. Wang). We tuned two spectral windows centered at the expected frequency of the [C II] line and the other two spectral windows centered at about 15 GHz away from the expected [C II] line. The observations were taken in 2020 March 02 with 29 minutes of on-source integration time.

The ALMA data were reduced using the CASA 5.6.1 pipeline (McMullin et al. 2007) following the standard calibration procedures. The continuum map was imaged by averaging over all the line-free channels using Briggs cleaning via the CASA task `tclean` with robust-

ness parameter  $r = 2.0$ , corresponding to natural visibility weights, to maximize the signal-to-noise ratio (S/N) of our observations. The beam size for the continuum image is  $0''.70 \times 0''.56$ . We subtracted the continuum using the `uvcontsub` before imaging the [C II] line. The [C II] map was collapsed over  $\pm 1.4\sigma_{\text{line}}$  to maximize the S/N of the intensity map. Since both the continuum and [C II] emissions are marginally resolved, we extracted the 1D spectrum with an  $1''.5$  diameter aperture centered on the emission. The fully calibrated continuum map, [C II] map and [C II]+continuum spectrum are shown in Figure 2. From the spectral fitting of the [C II]+continuum spectrum, we derive a [C II] redshift of  $z_{[\text{C II}]} = 7.6423 \pm 0.0013$ .

## 3. A 1.6 BILLION SOLAR MASS BLACK HOLE

The most reliable tool for measuring the mass of SMBHs at high redshift is the Mg II virial estimator (Vestergaard & Osmer 2009). We first de-redshift the



**Figure 2.** ALMA observations of the dust continuum and [C II] line. The left panel shows the dust continuum map with contour levels of  $[3, 5, 7, 9, 11, 13] \times \sigma$ , where  $\sigma = 0.02$  mJy. The middle panel shows the integrated [C II] emission with contour levels of  $[3, 4] \times \sigma$ , where  $\sigma = 0.04$  Jy km s $^{-1}$ . The sizes of the continuum cutout and the [C II] cutout are  $4'' \times 4''$ . The [C II] intensity map was collapsed over  $\pm 1.4\sigma_{\text{line}}$ . The white crosses in both the left and middle panels highlight the quasar position derived from VHS infrared images. The right panel shows the [C II] spectrum (black) and noise vector (blue) extracted from the data cube with an aperture diameter of  $1''.5$  centered at the peak position of the continuum map. The spectrum is re-binned to 23.4 MHz channels ( $\sim 30$  km s $^{-1}$ ). The spectral fitting (red line) gives  $\text{FWHM} = 312 \pm 94$  km s $^{-1}$  and  $z_{[\text{C II}]} = 7.6423 \pm 0.0013$ .

spectrum to the rest-frame using the [C II] redshift. Then we fit a pseudo-continuum model that contains a power-law continuum, Fe II emission (Vestergaard & Wilkes 2001; Tsuzuki et al. 2006) and a Balmer continuum (De Rosa et al. 2014) to spectral regions free of strong, broad emission/absorption lines (except for the Fe II). This procedure allows us to measure a rest-frame UV slope of  $\alpha_{\lambda} = -0.91 \pm 0.02$  and a quasar bolometric luminosity of  $(1.4 \pm 0.1) \times 10^{47}$  erg s $^{-1}$  after applying a bolometric correction factor of  $C_{3000} = 5.15$  (Shen et al. 2011). After subtracting the pseudo-continuum model from the spectrum, we fit a two-Gaussian model to the Mg II line and derive a full width at half maximum of  $\text{FWHM} = 3670 \pm 405$  km s $^{-1}$  and a Mg II-based redshift of  $z_{\text{Mg II}} = 7.611 \pm 0.004$ . The detailed spectral fitting result is shown in Figure 1. Based on the spectral fitting and the Mg II virial estimator of Vestergaard & Osmer (2009), we estimate the mass of the central SMBH to be  $M_{\text{BH}} = (1.6 \pm 0.4) \times 10^9 M_{\odot}$ . The Eddington ratio of this SMBH is  $L_{\text{bol}}/L_{\text{Edd}} = 0.67 \pm 0.14$ , which indicates that the quasar is in a rapidly accreting phase, similar to other luminous quasars known at  $z > 7$  (e.g. Mortlock et al. 2011; Bañados et al. 2018; Wang et al. 2018; Yang et al. 2020a). Following Wang et al. (2018, 2020a) and Yang et al. (2020a), all the uncertainties are reported as the 16th and 84th percentiles of the distribution of each quantity, as derived from spectral fitting of 100 mock spectra. These mock spectra were created by randomly assigning Gaussian noise at each spectral pixel, scaled to that pixel’s  $1\text{-}\sigma$  error. All the measurements and corresponding uncertainties from the spectral fitting are listed in Table 1.

In Figure 1, we also show the individual fittings of the 100 mock spectra. Note that our best-fit model slightly over-estimates the flux in the ranges of 22800–23400 Å and 24400–25000 Å. In order to explore the effects of

the continuum overestimation on  $M_{\text{BH}}$  measurements, we re-fit the spectrum in K-band only and estimate  $\text{FWHM}_{\text{Mg II}} = 4108 \pm 473$  km s $^{-1}$  and  $M_{\text{BH}} = (1.9 \pm 0.3) \times 10^9 M_{\odot}$ , consistent with that derived from the global fitting within uncertainties. This K-band spectral model gives a better fit over this wavelength range, but extrapolating it to the J and H bands shows that it overestimates the continuum at wavelengths shorter than K, suggesting that the quasar could be slightly reddened by dust and cannot be well modeled with a single power law. In addition, the fitting could also be affected by the difference between the iron template and the iron emission from this particular quasar, the possible Mg II absorption from outflowing gas and/or intervening metal absorbers (see §4), and the large uncertainties in pixels at the red edge of the spectrum. Future space-based observations of the spectrum beyond  $2.5 \mu\text{m}$  are needed to characterize the dust extinction and to better constrain the  $M_{\text{BH}}$ . In this work, we adopt the best fit from the global fitting as our fiducial model.

To compare the constraints of seed black hole masses and the growth history of the earliest SMBHs from  $z > 7$  quasars, we plot the growth history of all known  $z > 7$  quasars with  $M_{\text{BH}}$  measurements in Figure 3 by assuming an Eddington accretion with a 10% radiative efficiency and a duty cycle of unity. In this figure, all  $M_{\text{BH}}$  were measured using the same Mg II virial estimator (Vestergaard & Osmer 2009) and thus have the same systematic uncertainties ( $\sim 0.5$  dex). J0313–1806, the highest redshift quasar known and hosting the most massive SMBH at  $z > 7$ , poses the most challenging constraint on the seed black hole mass. Assuming Eddington-limited accretion, if the SMBH started its growth at redshift  $z \sim 15 - 30$  (i.e.,  $\sim 400 - 570$  Myr growth time), it requires a  $10^4 - 10^5 M_{\odot}$  seed black hole; such a seed is inconsistent with being a Population III

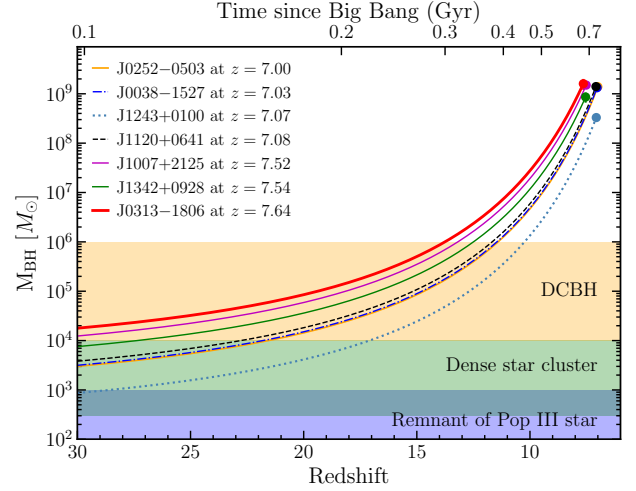


**Table 1.** The observational information and physical properties of J0313–1806

|                              |   |
|------------------------------|---|
| R.A. (J2000)                 | 03:13:43.84                                       |
| Decl. (J2000)                | −18:06:36.4                                       |
| $J$                          | $20.92 \pm 0.13$                                  |
| $K_s$                        | $19.96 \pm 0.16$                                  |
| W1                           | $20.01 \pm 0.11$                                  |
| W2                           | $20.22 \pm 0.28$                                  |
| $g, r, z$                    | $> 26.17, > 25.91, > 24.63^a$                     |
| $z_{ps1}, y_{ps1}$           | $> 23.13, > 22.07^a$                              |
| $M_{1450}$                   | $-26.13 \pm 0.05$                                 |
| $z_{[CII]}$                  | $7.6423 \pm 0.0013$                               |
| $z_{MgII}$                   | $7.611 \pm 0.004$                                 |
| $z_{CIV}$                    | $7.523 \pm 0.009$                                 |
| $\Delta v_{MgII-[CII]}$      | $1072 \pm 140 \text{ km s}^{-1}$                  |
| $\Delta v_{CIV-MgII}$        | $3080 \pm 332 \text{ km s}^{-1}$                  |
| $FWHM_{MgII}$                | $3670 \pm 405 \text{ km s}^{-1}$                  |
| $\alpha_\lambda$             | $-0.91 \pm 0.02$                                  |
| $\lambda L_{3000\text{\AA}}$ | $(2.7 \pm 0.1) \times 10^{46} \text{ erg s}^{-1}$ |
| $L_{bol}$                    | $(1.4 \pm 0.1) \times 10^{47} \text{ erg s}^{-1}$ |
| $M_{BH}$                     | $(1.6 \pm 0.4) \times 10^9 M_\odot$               |
| $L_{bol}/L_{Edd}$            | $0.67 \pm 0.14$                                   |
| $FWHM_{[CII]}$               | $312 \pm 94 \text{ km s}^{-1}$                    |
| $F_{[CII]}$                  | $0.60 \pm 0.16 \text{ Jy km s}^{-1}$              |
| $L_{[CII]}$                  | $(0.80 \pm 0.22) \times 10^9 L_\odot$             |
| $S_{228.4\text{GHz}}$        | $0.45 \pm 0.05 \text{ mJy}$                       |
| $L_{TIR}$                    | $(1.5 \pm 0.2) \times 10^{12} L_\odot$            |
| $M_{dust}$                   | $\sim 7 \times 10^7 M_\odot$                      |
| $SFR_{[CII]}$                | $40\text{--}240 M_\odot \text{ yr}^{-1}$          |
| $SFR_{TIR}$                  | $225 \pm 25 M_\odot \text{ yr}^{-1}$              |
| $t_{exp,ALMA}$               | 29 min  |
| $t_{exp,FIRE,Longslit}$      | 15 min  |
| $t_{exp,Flamingos,JH}$       | 30 min  |
| $t_{exp,FIRE,Echelle}$       | 362 min   |
| $t_{exp,Flamingos,HK}$       | 184 min   |
| $t_{exp,GNIRS}$              | 485 min   |
| $t_{exp,NIRES}$              | 264 min   |

<sup>a</sup>In these undetected bands, we report the  $2\sigma$  limiting magnitudes measured from a  $3''.0$  aperture centered at the quasar position.

star remnant (e.g. Madau & Rees 2001) or the product of dynamical processes in dense star clusters (e.g. Portegies Zwart et al. 2004). Instead, direct-collapse black holes (DCBH) forming in pre-galactic dark matter halos (e.g. Begelman et al. 2006) is the preferred seeding scenario.



**Figure 3.** Black hole growth track of  $z \geq 7$  quasars with the assumption of Eddington accretion and a radiative efficiency of 0.1 at all times. The curve gives the mass of seed black hole required to grow it to the observed mass of each SMBH in these quasars. The new quasar, J0313–0318, puts the strongest constraint on the seed black hole mass, compared to other  $z > 7$  quasars, including J0252–0503, J0038–1527, J1243+0100, J1120+0641, J1007+2125, and J1342+0928 (see legends, Yang et al. 2019; Wang et al. 2018; Matsuoka et al. 2019b; Mortlock et al. 2011; Yang et al. 2020a; Bañados et al. 2018). The masses of the central SMBHs in the previously known quasars are collected from Matsuoka et al. (2019b), Wang et al. (2018, 2020a,b), and Yang et al. (2020a). The blue, green and yellow shaded regions define the rough mass ranges of the seed black hole produced by Pop III stars, dense star clusters, and direct-collapse black holes (DCBH), respectively.

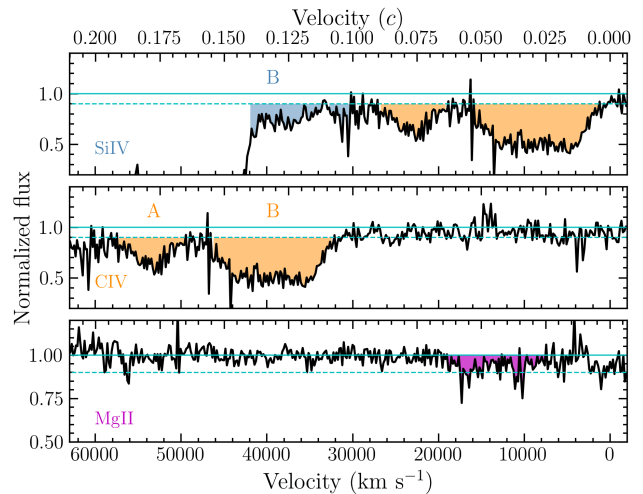
#### 4. EXTREMELY HIGH VELOCITY OUTFLOW

Another notable feature of J0313–1806 is that the spectrum contains several broad absorption line (BAL) features. The BAL features are thought to be produced by strong outflows launched from the accretion disk of the accreting SMBH. In Figure 4, we show the normalized spectra in the velocity space of the Si IV, C IV, and Mg II emission lines. The composite spectrum (blue line in Figure 1) that was used for normalizing the observed spectrum was constructed from the spectra of a sample of low-redshift quasars with similar relative blueshifts between C IV and Mg II lines and similar equivalent widths of C IV to those of J0313–1806, following the algorithm developed by Wang et al. (2020a). It was scaled to match the observed spectrum in the observed-frame  $2.0 - 2.2 \mu\text{m}$ . Using the normalized spectrum shown in Figure 4, we identified two C IV absorption troughs (highlighted orange regions in the middle panel of Figure 4) at extremely high velocities of  $(0.171\text{--}0.186)c$  (trough A) and  $(0.109\text{--}0.155)c$  (trough B). We use the “balnic-

ity” index (BI; Weymann et al. 1991) to estimate the strength of the BALs in the quasar. The measured BIs are  $1300 \text{ km s}^{-1}$  and  $5400 \text{ km s}^{-1}$  for troughs A and B, respectively. Trough B also has a Si IV absorption in the corresponding velocity range. The associated Si IV absorption for trough A falls into the Gunn-Peterson trough and is thus undetectable. Because the potential BAL absorptions from Si IV could clobber the proximity zone, we can not use this quasar to perform the damping wing studies.

We also considered the alternative explanation that the two troughs are Si IV absorption troughs (highlighted orange regions in the top panel of Figure 4) with slightly lower velocities (i.e.  $< 0.1c$ ). We rule this explanation out given that there are no associated C IV absorption troughs at the corresponding velocities. We note that there is a possible weak Mg II absorption (highlighted purple regions in the bottom panel of Figure 4), which would mean that J0313–1806 is a Low-ionization BAL (LoBAL). However, the Mg II absorption feature does not satisfy the BI definition (i.e. continuously smaller than 0.9 for more than  $2000 \text{ km s}^{-1}$ ). The absorption could also be affected by a mismatch of the iron emission between the composite and J0313–1806. Foreground absorption from the intervening IGM and/or circumgalactic medium (CGM) could also contribute to some of the absorption. Future high resolution spectroscopic observations are needed to identify individual foreground metal absorbers.

Extremely high velocity ( $> 0.1 c$ ) outflows are among the most promising evidence for active galactic nucleus (AGN) feedback, given that their kinetic power might be high enough to affect the star formation in quasar host galaxies (e.g. Chartas et al. 2009). Such outflows are also very rare phenomena at lower redshifts; for example, Rodríguez Hidalgo et al. (2020) identified only 40 ( $\sim 0.6\%$ ) extremely high velocity outflow systems from a parent sample of  $\sim 6700$  luminous quasars at  $z \sim 2 - 5$ . Thus, the discovery of relativistic outflows in J0313–1806 and J0038–1527 ( $z = 7.03$ ; Wang et al. 2018) among a sample of only 8  $z > 7$  quasars indicates that relativistic outflows are more common at the highest redshifts, suggesting an evolution with redshift of the quasar outflow phenomenon. In addition, the C IV broad emission line has a substantial blueshift, another signature of radiation driven outflows, with a velocity of  $3080 \text{ km s}^{-1}$  relative to the Mg II line and  $4152 \text{ km s}^{-1}$  relative to the [C II] line. The substantial blueshift of the C IV broad emission line, consistent with what is expected from the relation between the outflow velocity and the C IV blueshift (Rankine et al. 2020), is among the most extreme cases observed at lower redshifts. Such



**Figure 4.** The normalized spectrum of J0313–1806. The solid and dashed lines represent 100% and 90% of the normalized spectrum, respectively. The top panel shows the outflow velocity of the Si IV line, the middle panel denotes the outflow velocity of the C IV line, and the bottom panel represents the outflow velocity of the Mg II line. We interpret the two most obvious troughs (orange regions) as extremely high velocity C IV outflow systems with trough A having  $v = (0.171 - 0.186)c$  and trough B having  $v = (0.109 - 0.155)c$ . There is a potential weak Mg II absorption trough (the highlighted purple region in the bottom panel), but it does not satisfy the BI definition.

large blueshifts of C IV emission have also commonly been observed in other luminous  $z > 6.5$  quasars (e.g. Meyer et al. 2019; Mazzucchelli et al. 2017; Wang et al. 2020b), but have not been commonly found in lower redshift quasars. These observations indicate that the earliest SMBHs are in a fast-growing phase (i.e. with a high Eddington ratio) and that quasar outflows could play a crucial role in regulating the growth of the earliest SMBHs and their hosts.

## 5. QUASAR HOST GALAXY

The dust continuum around the redshifted [C II] emission from the quasar host galaxy is significantly detected by ALMA (Figure 2). We measure the continuum flux  $S_{228.4 \text{ GHz}} = 0.45 \pm 0.05 \text{ mJy}$  from a two-dimensional Gaussian fit to the collapsed continuum map using the CASA task `imfit`. The continuum emission is marginally resolved with a de-convolved size of  $0''.62 \times 0''.29$  or a physical size of  $3.12 \times 1.44 \text{ kpc}$ , similar to the sizes of other quasar host galaxies at  $z \gtrsim 6$  (e.g. Venemans et al. 2018). Under the standard assumption of an optically thin greybody dust spectral energy distribution with a dust temperature of  $T_{\text{dust}} = 47 \text{ K}$  and an emissivity index of  $\beta = 1.6$  (Beelen et al. 2006), after considering the effect of the cosmic microwave back-

ground on the dust emission, we estimate a total infrared luminosity of  $L_{\text{TIR}} = (1.5 \pm 0.2) \times 10^{12} L_{\odot}$ . We estimate the star formation rate (SFR) of the quasar host galaxy to be  $\text{SFR} = 225 \pm 25 M_{\odot} \text{ yr}^{-1}$  based on the scaling relation between the SFR and  $L_{\text{TIR}}$  (Murphy et al. 2011). With the same set of assumptions, we estimate a total dust mass of  $\sim 7 \times 10^7 M_{\odot}$  following Venemans et al. (2018).

The [C II] line is also detected (with peak pixel at  $> 4\sigma$ ) in our ALMA observations as shown in Figure 2. A single Gaussian fit to the [C II] line gives  $z_{[\text{CII}]} = 7.6423 \pm 0.0013$  and  $\text{FWHM}_{[\text{CII}]} = 312 \pm 94 \text{ km s}^{-1}$ . Instead of measuring the total [C II] line flux from the one-D spectrum, we measure it from the two-dimensional integrated line map using `imfit` following Decarli et al. (2018), and derive  $F_{[\text{CII}]} = 0.60 \pm 0.16 \text{ Jy km s}^{-1}$ . This corresponds to a [C II] luminosity of  $L_{[\text{CII}]} = (0.80 \pm 0.22) \times 10^9 L_{\odot}$  and a  $\text{SFR}_{[\text{CII}]} = 40\text{--}240 M_{\odot} \text{ yr}^{-1}$  by adopting the empirical relation from De Looze et al. (2014), consistent with the SFR derived from the total infrared luminosity. The properties of the quasar host galaxy are comparable to that of the other two quasar host galaxies known at  $z > 7.5$  (Venemans et al. 2017; Yang et al. 2020a). Future high-resolution observations of the star formation distribution with ALMA and observations of the kinematics of extended [O III] emission with the Near-Infrared Spectrograph (NIRSpec) on James Webb Space Telescope (JWST) will be necessary to carry out more detailed investigations of the dynamical mass of the host galaxy and the impact of the quasar outflow on star formation in the host galaxy.

## 6. SUMMARY

In this letter, we report the discovery of a luminous quasar, J0313–1806, at redshift  $z = 7.642$ . It is the most distant quasar yet identified. J0313–1806 has a bolometric luminosity of  $L_{\text{bol}} = (1.4 \pm 0.1) \times 10^{47} \text{ erg s}^{-1}$  and hosts a SMBH with a mass of  $(1.6 \pm 0.4) \times 10^9 M_{\odot}$ , accreting at an Eddington ratio of  $0.67 \pm 0.14$ . The existence of such a SMBH just  $\sim 670$  million years after the Big Bang puts strong constraints on the formation models of seed black holes. The quasar’s rest-frame UV spectrum exhibits broad absorption troughs from extremely high-velocity outflows. These outflows have a maximum velocity up to  $\sim 20\%$  of the speed of light. We also detect strong dust emission and [C II] line emission from the host galaxy in ALMA data. The ALMA observations suggest that J0313–1806 is hosted by an intensely star-forming galaxy with a star formation rate of  $\sim 200 M_{\odot} \text{ yr}^{-1}$ . The continuum observations indicate that substantial dust ( $\sim 7 \times 10^7 M_{\odot}$ ) was already built up in the quasar host galaxy. The relativistic

quasar outflow and the fast SMBH growth phase, combined with the intense star forming activity in the host galaxy, suggest that J0313–1806 is an ideal target for investigating the assembly of the earliest SMBHs and their massive host galaxies with future high resolution ALMA and JWST NIRSpec/IFU observations.

## ACKNOWLEDGMENTS

Support for this work was provided by NASA through the NASA Hubble Fellowship grant #HST-HF2-51448.001-A awarded by the Space Telescope Science Institute, which is operated by the Association of Universities for Research in Astronomy, Incorporated, under NASA contract NAS5-26555. J.Y., X.F., and M.Y. acknowledge the support from the US NSF grant AST 15-15115, AST 19-08284, and NASA ADAP grant NNX17AF28G. Research by A.J.B. is supported by NSF grant AST-1907290. The work of T.C. was carried out at the Jet Propulsion Laboratory, California Institute of Technology, under a contract with NASA. ACE acknowledges support by NASA through the NASA Hubble Fellowship grant #HF2-51434 awarded by the Space Telescope Science Institute, which is operated by the Association of Universities for Research in Astronomy, Inc., for NASA, under contract NAS5-26555. L.J. acknowledge support from the National Science Foundation of China (11721303, 11890693) and the National Key R&D Program of China (2016YFA0400703). B.P.V. acknowledges funding through the ERC Advanced Grant 740246 (Cosmic Gas). X.W. is thankful for the support from the National Key R&D Program of China (2016YFA0400703) and the National Science Foundation of China (11533001 & 11721303).

We thank John Blakeslee and Sean Dougherty for approving the Director’s Discretionary Time observation requests for Gemini/GNIRS and ALMA, respectively. We thank Rene Rutten and Hwhiyun Kim for their supports on the Gemini/Flamingos observations. Thanks to Dave Osip for approving the request of Magellan/FIRE spectroscopy, which is important to the confirmation of this quasar. We thank the anonymous referee for carefully reading the manuscript and providing comments.

This paper makes use of the following ALMA data: ADS/JAO.ALMA#2019.A.00017.S. ALMA is a partnership of ESO (representing its member states), NSF (USA) and NINS (Japan), together with NRC (Canada), MOST and ASIAA (Taiwan), and KASI (Republic of Korea), in cooperation with the Republic of Chile. The Joint ALMA Observatory is operated by ESO, AUI/NRAO and NAOJ. In addition, publications from NA authors must include the standard NRAO ac-



knowledge: The National Radio Astronomy Observatory is a facility of the National Science Foundation operated under cooperative agreement by Associated Universities, Inc.

This research is based in part on observations obtained at the international Gemini Observatory (GS-2019B-Q-134, GN-2019B-DD-110), a program of NSF’s NOIR-Lab, which is managed by the Association of Universities for Research in Astronomy (AURA) under a cooperative agreement with the National Science Foundation. on behalf of the Gemini Observatory partnership: the National Science Foundation (United States), National Research Council (Canada), Agencia Nacional de Investigación y Desarrollo (Chile), Ministerio de Ciencia, Tecnología e Innovación (Argentina), Ministério da Ciência, Tecnologia, Inovações e Comunicações (Brazil), and Korea Astronomy and Space Science Institute (Republic of Korea).

Some of the data presented in this paper were obtained at the W. M. Keck Observatory, which is operated as a

scientific partnership among the California Institute of Technology, the University of California, and the National Aeronautics and Space Administration. The Observatory was made possible by the generous financial support of the W. M. Keck Foundation. The authors wish to recognize and acknowledge the very significant cultural role and reverence that the summit of Maunakea has always had within the indigenous Hawaiian community.

This paper includes data gathered with the 6.5 meter Magellan Telescopes located at Las Campanas Observatory, Chile.

*Facilities:* ALMA, Magellan (FIRE), Gemini (FLAMINGOS-2), Gemini (GNIRS), Keck (NIREs)

*Software:* PypeIt (Prochaska et al. 2020a,b), CASA (McMullin et al. 2007)

## REFERENCES

- Bañados, E., Venemans, B. P., Mazzucchelli, C., et al. 2018a, *Nature*, 553, 473
- Beelen, A., Cox, P., Benford, D. J., et al. 2006, *ApJ*, 642, 694
- Begelman, M. C., Volonteri, M., & Rees, M. J. 2006, *MNRAS*, 370, 289
- Cardelli, J. A., Clayton, G. C., & Mathis, J. S. 1989, *ApJ*, 345, 245
- Chambers, K. C., Magnier, E. A., Metcalfe, N., et al. 2016, *arXiv:1612.05560*
- Chartas, G., Saez, C., Brandt, W. N., et al. 2009, *ApJ*, 706, 644
- Davies, F. B., Hennawi, J. F., Bañados, E., et al. 2018, *ApJ*, 864, 142
- Decarli, R., Walter, F., Venemans, B. P., et al. 2018, *ApJ*, 854, 97
- De Looze, I., Cormier, D., Lebouteiller, V., et al. 2014, *A&A*, 568, A62
- De Rosa, G., Venemans, B. P., Decarli, R., et al. 2014, *ApJ*, 790, 145
- De Looze, I., Cormier, D., Lebouteiller, V., et al. 2014, *A&A*, 568, A62
- Dey, A., Schlegel, D. J., Lang, D., et al. 2019, *AJ*, 157, 168
- Dye, S., Lawrence, A., Read, M. A., et al. 2018, *MNRAS*, 473, 5113
- Eikenberry, S. S., Elston, R., Raines, S. N., et al. 2004, *Proc. SPIE*, 5492, 1196
- Elias, J. H., Joyce, R. R., Liang, M., et al. 2006, *Proc. SPIE*, 62694C
- Inayoshi, K., Visbal, E., & Haiman, Z. 2020, *ARA&A*, 58, 27
- Madau, P. & Rees, M. J. 2001, *ApJL*, 551, L27
- Matsuoka, Y., Iwasawa, K., Onoue, M., et al. 2019a, *ApJ*, 883, 183
- Matsuoka, Y., Onoue, M., Kashikawa, N., et al. 2019b, *ApJL*, 872, L2
- Mazzucchelli, C., Bañados, E., Venemans, B. P., et al. 2017, *ApJ*, 849, 91
- McMahon, R. G., Banerji, M., Gonzalez, E., et al. 2013, *The Messenger*, 154, 35
- McMullin, J. P., Waters, B., Schiebel, D., et al. 2007, *Astronomical Data Analysis Software and Systems XVI*, 376, 127
- Meyer, R. A., Bosman, S. E. I., & Ellis, R. S. 2019, *MNRAS*, 487, 3305
- Mortlock, D. J., Warren, S. J., Venemans, B. P., et al. 2011, *Nature*, 474, 616
- Murphy, E. J., Condon, J. J., Schinnerer, E., et al. 2011, *ApJ*, 737, 67
- Planck Collaboration, Aghanim, N., Akrami, Y., et al. 2020, *A&A*, 641, A6
- Portegies Zwart, S. F., Baumgardt, H., Hut, P., et al. 2004, *Nature*, 428, 724

- Prochaska, J. X., Hennawi, J., Cooke, R., et al. 2020, pypeit/PypeIt: Release 1.0.0, v1.0.0, Zenodo, doi:10.5281/zenodo.3506872
- Prochaska, J., Hennawi, J., Westfall, K., et al. 2020, The Journal of Open Source Software, 5, 2308
- Rankine, A. L., Hewett, P. C., Banerji, M., et al. 2020, MNRAS, 492, 4553
- Reed, S. L., Banerji, M., Becker, G. D., et al. 2019, MNRAS, 487, 1874
- Rodríguez Hidalgo, P., Khatri, A. M., Hall, P. B., et al. 2020, ApJ, 896, 151
- Schlegel, D. J., Finkbeiner, D. P., & Davis, M. 1998, ApJ, 500, 525
- Shen, Y., Richards, G. T., Strauss, M. A., et al. 2011, ApJS, 194, 45
- Simcoe, R. A., Burgasser, A. J., Bochanski, J. J., et al. 2010, Proc. SPIE, 773514
- Tegmark, M., Silk, J., Rees, M. J., et al. 1997, ApJ, 474, 1
- Tsuzuki, Y., Kawara, K., Yoshii, Y., et al. 2006, ApJ, 650, 57
- Venemans, B. P., Decarli, R., Walter, F., et al. 2018, ApJ, 866, 159
- Venemans, B. P., Walter, F., Decarli, R., et al. 2017, ApJL, 851, L8
- Vestergaard, M. & Osmer, P. S. 2009, ApJ, 699, 800
- Vestergaard, M. & Wilkes, B. J. 2001, ApJS, 134, 1
- Wang, F., Fan, X., Yang, J., et al. 2017, ApJ, 839, 27
- Wang, F., Yang, J., Fan, X., et al. 2018, ApJL, 869, L9
- Wang, F., Yang, J., Fan, X., et al. 2019, ApJ, 884, 30
- Wang, F., Davies, F. B., Yang, J., et al. 2020, ApJ, 896, 23
- Wang, F., Fan, X., Yang, J., et al. 2020, arXiv:2011.12458
- Weymann, R. J., Morris, S. L., Foltz, C. B., et al. 1991, ApJ, 373, 23
- Wright, E. L., Eisenhardt, P. R. M., Mainzer, A. K., et al. 2010, AJ, 140, 1868
- Yang, J., Wang, F., Fan, X., et al. 2019, AJ, 157, 236
- Yang, J., Wang, F., Fan, X., et al. 2020, ApJL, 897, L14
- Yang, J., Wang, F., Fan, X., et al. 2020, ApJ, 904, 26