

UC Davis

UC Davis Previously Published Works

Title

Characteristics of HIV target CD4 T cells collected using different sampling methods from the genital tract of HIV seronegative women

Permalink

<https://escholarship.org/uc/item/7h57n80q>

Journal

PLOS ONE, 12(6)

ISSN

1932-6203

Authors

Iyer, Smita S
Sabula, Michael J
Mehta, C Christina
[et al.](#)

Publication Date

2017

DOI

10.1371/journal.pone.0178193

Copyright Information

This work is made available under the terms of a Creative Commons Attribution License, available at <https://creativecommons.org/licenses/by/4.0/>

Peer reviewed

RESEARCH ARTICLE

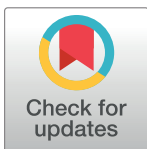
Characteristics of HIV target CD4 T cells collected using different sampling methods from the genital tract of HIV seronegative women

Smita S. Iyer¹*, Michael J. Sabula¹, C. Christina Mehta², Lisa B. Haddad³, Nakita L. Brown⁴, Rama R. Amara^{1,5}, Igho Ofotokun^{4,6}, Anandi N. Sheth^{4,6}*

1 Division of Microbiology and Immunology, Emory Vaccine Center, Yerkes National Primate Research Center, Emory University School of Medicine, Atlanta, Georgia, United States of America, **2** Department of Biostatistics, Emory University Rollins School of Public Health, Atlanta, Georgia, United States of America, **3** Department of Gynecology and Obstetrics, Emory University School of Medicine, Atlanta, Georgia, United States of America, **4** Division of Infectious Diseases, Department of Medicine, Emory University School of Medicine, Atlanta, Georgia, United States of America, **5** Department of Microbiology and Immunology, Emory University School of Medicine, Atlanta, Georgia, United States of America, **6** Grady Infectious Diseases Program, Grady Health System, Atlanta, Georgia, United States of America

* These authors contributed equally to this work.

* ansheth@emory.edu



OPEN ACCESS

Citation: Iyer SS, Sabula MJ, Mehta CC, Haddad LB, Brown NL, Amara RR, et al. (2017) Characteristics of HIV target CD4 T cells collected using different sampling methods from the genital tract of HIV seronegative women. PLoS ONE 12(6): e0178193. <https://doi.org/10.1371/journal.pone.0178193>

Editor: J. Gerardo García-Lerma, Centers for Disease Control and Prevention, UNITED STATES

Received: February 1, 2017

Accepted: May 8, 2017

Published: June 1, 2017

Copyright: © 2017 Iyer et al. This is an open access article distributed under the terms of the [Creative Commons Attribution License](https://creativecommons.org/licenses/by/4.0/), which permits unrestricted use, distribution, and reproduction in any medium, provided the original author and source are credited.

Data Availability Statement: Due to the small number of participants in this study, data are restricted to protect participant confidentiality. Data are from the WIHS study for researchers who meet the criteria for access to confidential data. WIHS study authors may be contacted at wihis@jhsp.hhs.gov. The authors did not have special access privileges to these data which other researchers would not have.

Abstract

Background

Understanding the immune profile of CD4 T cells, the primary targets for HIV, in the female genital tract (FGT) is critical for evaluating and developing effective biomedical HIV prevention strategies in women. However, longitudinal investigation of HIV susceptibility markers expressed by FGT CD4 T cells has been hindered by low cellular yield and risk of sampling-associated trauma. We investigated three minimally invasive FGT sampling methods to characterize and compare CD4 T cell yield and phenotype with the goal of establishing feasible sampling strategies for immune profiling of mucosal CD4 T cells.

Methods and results

FGT samples were collected bimonthly from 12 healthy HIV negative women of reproductive age in the following order: 1) Cervicovaginal lavage (CVL), 2) two sequential endocervical flocked swabs (FS), and 3) two sequential endocervical cytobrushes (CB1, CB2). Cells were isolated and phenotyped via flow cytometry. CD4 T cell recovery was highest from each individual CB compared to either CVL or FS ($p < 0.0001$). The majority of CD4 T cells within the FGT, regardless of sampling method, expressed CCR5 relative to peripheral blood ($p < 0.01$). Within the CB, CCR5⁺ CD4 T cells expressed significantly higher levels of $\alpha 4\beta 7$, CD69, and low levels of CD27 relative to CCR5⁻ CD4 T cells (all $p < 0.001$). We also identified CD4 Treg lineage cells expressing CCR5 among CB samples.

Funding: This study was funded by the NIH (1K23AI114407 to ANS). The $\alpha_4\beta_7$ reagent used in these studies was provided by the NIH Nonhuman Primate Reagent Resource (R24 OD010976, and NIAID contract HHSN 272201300031C). Data in this manuscript were collected by the Women's Interagency HIV Study (WIHS). The contents of this publication are solely the responsibility of the authors and do not represent the official views of the National Institutes of Health (NIH). Atlanta WIHS Principal Investigators are Ighovwerha Ofotokun and Gina Wingood, U01-AI-103408. The WIHS is funded primarily by the National Institute of Allergy and Infectious Diseases (NIAID), with additional co-funding from the Eunice Kennedy Shriver National Institute of Child Health and Human Development (NICHD), the National Cancer Institute (NCI), the National Institute on Drug Abuse (NIDA), and the National Institute on Mental Health (NIMH). Targeted supplemental funding for specific projects is also provided by the National Institute of Dental and Craniofacial Research (NIDCR), the National Institute on Alcohol Abuse and Alcoholism (NIAAA), the National Institute on Deafness and other Communication Disorders (NIDCD), and the NIH Office of Research on Women's Health. WIHS data collection is also supported by UL1-TR000454 (Atlanta CTSA).

Competing interests: The authors have declared that no competing interests exist.

Conclusions

Using three different mucosal sampling methods collected longitudinally we demonstrate that CD4 T cells within the FGT express CCR5 and $\alpha_4\beta_7$ and are highly activated, attributes which could act in concert to facilitate HIV acquisition. FS and CB sampling methods can allow for investigation of strategies to reduce HIV target cells in the FGT and could inform the design and interpretation microbicide and vaccine studies in women.

Introduction

The majority of HIV infections by heterosexual transmission occur in adult and adolescent women across the female genital tract (FGT) mucosa [1, 2]. Understanding factors contributing to HIV acquisition at the main site of infection in women is critical for developing effective biomedical HIV prevention interventions such as pre-exposure prophylaxis (PrEP) strategies, microbicides, and vaccines, as well as for evaluating factors that may alter HIV acquisition risk, such as hormonal contraception.

Within the FGT mucosa, the number and type of cellular targets, primarily CD4⁺ T cells expressing the cell surface receptor C-C chemokine receptor type 5 (CCR5, the primary HIV co-receptor), predicts susceptibility to HIV infection [3, 4]. In the FGT mucosa, these markers are increased compared to the blood and penile mucosa [5–7], potentially explaining women's increased risk of HIV acquisition during unprotected vaginal sex compared to men [8]. In addition to HIV co-receptor expression, CD4 T cells are heterogeneous with regards to their HIV susceptibility, and certain T cell phenotypes such as activated T cells [9] and cells expressing mucosal trafficking markers (such as $\alpha_4\beta_7$, a heterodimeric integrin receptor involved in T cell migration into the gut associated lymphoid tissue) [7] have been associated with HIV acquisition in experimental models [10, 11] and may be over-expressed in the FGT compared to blood.

Despite knowledge of these cellular markers of HIV susceptibility, inter and intra-individual variability in these markers is not well described but is critical in the design and interpretation HIV biomedical prevention studies. Of note, longitudinal studies of these markers have been hindered by challenges associated with mucosal sampling, in which trauma induced by invasive sampling (such as biopsy collection) may affect subsequent mucosal immune characterization. Furthermore, while HIV target CD4 T cells in the systemic, lymphoid, rectal, and female genital mucosal compartments have been frequently studied, detailed knowledge about specific CD4 T cell subsets, phenotypes, and functional characteristics likely to facilitate HIV acquisition in the mucosa remains limited, partially due to limited cellular yield to conduct more in-depth phenotypic and functional analyses. Recently, McKinnon *et al* compared absolute yields of mononuclear leukocyte subpopulations from genital leukocytes obtained by cervicovaginal lavage (CVL), endocervical cytobrushes, and cervical biopsy and illustrated that cell yields for all leukocyte populations tested from two serially collected cytobrushes were significantly higher than CVL and comparable to those obtained from a single cervical biopsy [12]. However, T cell yield was significantly lower in cytobrush samples compared to biopsy, raising the question of whether cytobrush samples are suitable for in-depth characterizations of CD4 T cells within the FGT which may require high cellular yields for assays.

Because characterization of FGT-derived CD4 T cells using minimally-invasive sampling methods is important for longitudinal evaluation of these cells during biomedical HIV prevention studies, we compared CD4 T cell yields and in-depth T cell subset phenotypes from cells

collected longitudinally using three different non-biopsy, minimally-invasive genital tract sampling methods: CVL, two endocervical flocked swabs (FS), and each of two sequential endocervical cytobrush (CB) collections. Additionally, we determined whether two consecutive cytobrushes provide sufficient T cell yields for in-depth phenotypic characterization of FGT CD4 T cell subsets.

Methods

Study design and participants

We recruited HIV seronegative women between 18–44 years old with an intact uterus and cervix who were either enrolled in the Atlanta site of the Women's Interagency HIV Study (WIHS) or who met risk factors for HIV acquisition as per enrollment criteria for the cohort (a. injection drug use or use of crack, cocaine, heroin, or methamphetamine; b. diagnosed with a sexually transmitted infection; c. unprotected sex with 3 or more men; d. having sex for drugs, money, or shelter; e. sex with a known HIV-positive man; f. having a partner meeting any of the preceding criteria). Most of the recruited participants were African American, who are disproportionately affected by HIV in the Southern US, and are representative of the demographic of the Atlanta WIHS cohort. Negative HIV serostatus was confirmed at the time of screening using an FDA-approved HIV antibody test. Women were excluded if they were pregnant, currently using systemic hormonal contraceptives, had a symptomatic vaginal infection or genital ulcer disease at screening or treatment for vaginal infection in the preceding two weeks, an active malignancy, were using immunosuppressive medications, had surgery within the preceding 2 months, or had a cervical procedure within the previous 30 days. This protocol was approved by the Institutional Review Board at Emory University and the Grady Research Oversight Committee. Written informed consent was obtained from all participants.

Specimen collection

We collected paired blood and cervicovaginal samples during the follicular (between 7–10 days from the start of the previous menstrual cycle) and luteal (between 21–25 days from the start of the previous menstrual cycle) phases for up to five consecutive visits. Sexual, reproductive, medication, and genitourinary symptom histories were collected at each study visit. Cervicovaginal specimens were collected by the same clinician for all participants during speculum pelvic examination in the following distal to proximal order to reduce any potential effect of one collection method on the subsequent[13]: 1) CVL with 10ml phosphate buffered saline (PBS) directed toward the cervical os i.e., the opening in the center of the ectocervix, and vaginal walls x 1 minute lavage and placed in 5mL human AB serum (Atlanta Biologicals), 2) two sequential endocervical FS (COPAN Innovation, Italy) placed in 20mL complete media (RPMI -1640, penicillin-streptomycin, L-glutamine (Gibco) with 10% heat inactivated fetal bovine serum [FBS]), 3) two sequential endocervical CB collected in 20mL complete media each. Specimens were collected and immediately transported on ice for real-time processing and immune phenotyping. Presence of visible blood contamination was assessed in all FGT specimens at the time of sample collection, recorded on a scale of 1–10 at the time of processing for FS and CB; CVL was tested for blood and leukocytes using Mutistix 8SG urinalysis strips (Siemens Healthcare, Los Angeles, CA) and for semen using the ABACard p30 antigen detection test (Abacus Diagnostics, West Hill, CA). Vaginal swabs were tested for sexually transmitted infections (STIs) including *Neisseria gonorrhoea*, *Chlamydia trachomatis*, *Trichomonas vaginalis*, and HSV-1/2 DNA via multiplex PCR in a CLIA-certified laboratory. Blood was collected in 8 mL-sodium citrate-containing CPT vacutainer tubes (BD, Franklin Lakes, NJ).

Sample processing

All samples were processed within three hours of collection. CVLs and CBs were processed at 4°C as described by McKinnon et al [12]. Briefly, CVL samples were centrifuged at 1500 rpm for 5min, the cell pellet was resuspended in 10 ml complete media and the cell suspension was strained through 100 µm cell strainer up to 3 times, washed once with 10ml complete medium and resuspended in complete medium at 20 million cells/ml. Two million cells were used for flow cytometry staining. FS were washed in complete media to extract cells into a 50ml conical tube and were strained through a 100 µm strainer once. CBs were inserted into 25ml serological pipette containing 20ml complete media. The CB was moved in and out of the pipette tip to dislodge the cells, while the CB was being washed in complete media to extract cells into a 50ml conical tube. Cells were then strained through a 100 µm strainer once. Both FS and CB cell suspensions were washed once with 10ml complete medium and resuspended in 100µl of complete medium and used for flow cytometric staining. Cell suspensions were placed on ice at all times to preserve cell viability. After determination of cell counts, cells were used immediately for flow cytometry. PBMCs were isolated from whole blood collected in sodium citrate tubes and isolated by density gradient centrifugation according to standard procedures as described previously [14].

Flow cytometry

Staining on whole blood was done at room temperature while PBMCs and cells collected from CVL, FS, and CB were stained in PBS containing 2% FBS for 30 min at 4°C. In addition, leukocytes obtained from the first and second CB were separately assayed to compare CD4 T cell yield and phenotype between individual CBs. Cells were stained with fluorochrome-conjugated antibodies specific for CD45 (2D1), CD4 (OKT4), CD8 (SK1), CCR5 (2D7), CXCR4 (12G5), CD27 (M-T271), CD69 (L78) from BD Pharmingen (San Jose, CA); CD45RO (UCHL1), *FOXP3* (236A/E7) from eBioscience, (San Diego, CA); CD38 (HIT2) from Invitrogen (Grand Island, NY); and $\alpha_4\beta_7$ from the NIH Nonhuman Primate Reagent Resource. Dead cells were excluded from the analysis based on staining for Live/Dead Near-IR dead cell stain from Molecular Probes, Invitrogen. Staining for *FOXP3* was performed after cells were stained for surface antigens followed by permeabilization/fixation using the *FOXP3* kit and protocol, followed by intracellular staining. Samples were acquired on a LSR Fortessa (BD Biosciences) and all cellular events were collected for mucosal samples while 500,000 events were collected for samples from blood.

Statistical analysis

Data were analyzed using FlowJo software v X.0.7 (Tree Star, Inc., Ashland, OR) after gating out dead cells. CD45⁺, CD4⁺, and CD8⁺ T cell yields from each mucosal sampling method were summarized and compared after log transformation. T cell subset frequencies and frequency of cell-surface markers (HIV co-receptors, activation markers, and mucosal trafficking markers) were compared between each mucosal sampling method and blood. Expression of activation and mucosal trafficking markers were compared from CB and blood-derived CD45RO⁺ CCR5⁺ cells versus CD45RO⁺ CCR5⁻ cells. Finally, the frequency of *FOXP3*⁺ CD4 T regulatory cells and expression of CCR5 on these cells was compared between CB- versus blood-derived CD4 T cells. For the longitudinal data, separate linear mixed effects models with random effects for participant and visit were developed for each T cell subset/ cell surface marker of interest. One thousand bootstrap repetitions were used to calculate the 95% confidence interval for correlations from repeated measures data, and statistical significance was determined by $p \leq 0.05$ using correlation analysis of the first observation per participant.

Wilcoxon signed rank test was used to compare paired specimens within a participant when data from only one visit was used. Statistical analyses were performed in SAS version 9.4.

Results

We enrolled HIV negative women for up to five consecutive bimonthly visits. We excluded 5 specimens with high visible CVL blood contamination ($n = 4$) and limited CVL cell yields (less than 100 CD45⁺ cells, $n = 1$) from all subsequent analyses. Demographic, clinical, and visit characteristics of the 12 included participants contributing 33 visits are shown in [Table 1](#). The median participant age was 35 years, all were African American, and the majority reported condomless sex in the last 6 months. Vaginal sex was reported during the week before 48% of study visits. Few genital tract infections were noted during study visits, but the vaginal pH was over 4.5 in over half of study visits. Any visible blood was noted at the time of collection in 6%, 41%, and 88% of CVL, FS, and CB samples, respectively.

CD4 T cell recovery is highest from endocervical cytobrushes relative to endocervical flocked swabs and cervicovaginal lavages

[Fig 1A](#) shows a representative flow plot of the gating strategy used to identify CD4 T cells based on live CD45⁺ CD8⁻ leukocytes. For T cell yield analyses, we additionally excluded 8

Table 1. Demographic, clinical, and visit characteristics among participant visits included in the analysis.

Participant Characteristic	Number of participants (%) or median (IQR) N = 12
Age	35 (33–38)
African American race	12 (100%)
Condomless vaginal sex in the last 6 months	10 (83%)
Self-reported sexually transmitted infection ^a in the last 6 months	3 (25%)
Visit Characteristic	Number of visits (%) or median (IQR) N = 33
Visit during follicular phase ^b	15 (46%)
Symptomatic genital infection ^c	0
Asymptomatic sexually transmitted infection	
Gonorrhea	3 (9%)
Chlamydia	3 (9%)
HSV 1/2 DNA	1 (3%)
Trichomonas	1 (3%)
pH	
Median pH (IQR)	4.7 (4.0–5.0)
pH > 4.5	17 (52%)
Self-reported vaginal sex within 1 week of study visit	14 (48%)
Semen contamination	3 (9%)
Any visible blood noted	
CVL	2 (6%)
Flocked swab	13 (41%)
Endocervical cytobrush	29 (88%)

a Gonorrhea, syphilis, chlamydia, pelvic inflammatory disease, genital herpes, genital warts, or trichomonas.

b Based on self-reported last menstrual period (follicular phase visits scheduled 7–10 days after onset of menses +/- 3 days; luteal phase visits scheduled 21–25 days after onset of menses +/- 3 days).

c Presence of purulent cervicovaginal discharge or ulcerative vaginal lesions during participant visit.

<https://doi.org/10.1371/journal.pone.0178193.t001>

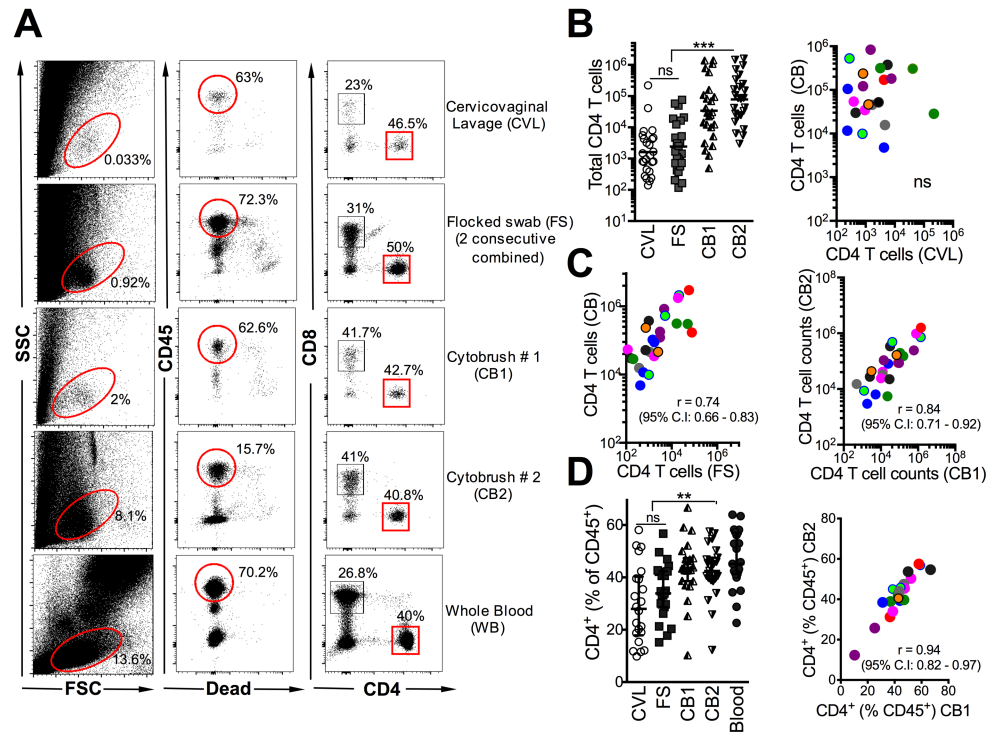


Fig 1. Highest CD4 T cell recovery from endocervical cytobrushes relative to endocervical flocked swabs and cervicovaginal lavages. (A) Example analysis of human genital mucosal specimens from 9 women sequentially sampled for cervicovaginal lavage (CVL), flocked swab (FS) followed by two consecutive cytobrushes (CB1, CB2). The cellular components were isolated by centrifugation and incubated with antibodies to identify T lymphocyte subsets at 4 °C for 30 minutes. Whole blood from the same individual was stained as a positive control. Scatter plots show data for nine participants over two-three independent visits at either the follicular or the luteal phase of the menstrual cycle. Participants are color coded for correlation plots. (B) CD4 T cell yields significantly higher from CB sampling relative to either CVL or FS, CD4 T cell yields from CB are not associated with yields from CVL. (C) CD4 T cell yields from FS correlate with CB yields, and CB1 and CB2 yields strongly correlate with each other. (D) CD4 T cell distribution profile across sampling methods, frequency of CD4⁺ cells similar and correlated between CB1 and CB2. ***, p < 0.001; **, p < 0.01, *, p < 0.05.

<https://doi.org/10.1371/journal.pone.0178193.g001>

specimens with inadequate staining for analyses and quantified the absolute number of CD45⁺, CD4⁺, and CD8⁺ cells isolated from each collection method from 9 participants over two (2 participants) to three visits (7 participants) for a total of 25 participant visits (Table 2). Parameters in samples excluded versus included in the analysis are shown in S1 Table. The median visual CB blood score (assigned 0–10 at the time of sample processing) was at least 7 for 15% and 8% for included versus excluded samples, respectively.

Among all three methods tested, CB yielded the highest number of lymphocytes, CD4 T cells and CD8 T cells. The cell yield from CB2 was as good as (or in many cases was higher than) the

Table 2. Median (IQR) cell numbers of leukocyte subsets and ratio of CD4 to CD8 T cells in sequential cervicovaginal lavages (CVL), two consecutive flocked swabs (FS), and first and second endocervical cytobrushes (CB1 and CB2), respectively. Data are from 25 participant visits.

	CVL	FS	CB1	CB2
CD45 ⁺	8,526 (1,980–16,750)	5,542 (2008–38,910)	67,021 (20,116–407,211)	277,944 (46,142–796,235)
CD4	1,364 (402–4534)	1,697 (644–144,97)	29,501 (7,659–135,699)	85,653 (23,454–294,090)
CD8	782 (351–1794)	864 (291–5560)	8950 (2,505–43,116)	24031 (7,708–167,322)
CD4:CD8	1.7 (0.9–2.8)	1.4 (1.1–2.2)	1.7 (1.1–2.8)	1.6 (1.1–2.9)

<https://doi.org/10.1371/journal.pone.0178193.t002>

yield from CB1. Compared to either the first or the second CB, CVL yielded markedly lower total CD45⁺ cells (median CVL 8,526; CB1 67,021; CB2 277,944; $p < 0.001$ for CVL vs. either CB1 or CB2), CD4⁺ cells (median CVL 1,364; CB1 29,501; CB2 85,653; $p < 0.0001$ for CVL vs. either CB1 or CB2), and CD8⁺ cells (median CVL 782; CB1 8,950; CB2 24,031; $p < 0.01$ for CVL vs. either CB1 or CB2). Cell yields from CVL were comparable to those obtained from two combined FS (FS median CD45⁺ 5,542; CD4⁺ 1,697; CD8⁺ 864. (Fig 1B).

To ascertain whether prior CVL or FS affected CB cell recovery, we determined correlations between cell yields from CVL, FS, and CB. Consistent with the distinct FGT compartments sampled by CVL and CB (cervicovaginal versus endocervical), we observed no association in CD4 T cell yields between the two methods (Fig 1B). In addition, the cellular yields from the CB samples in our study were comparable or higher than those described in other studies where CVLs were not collected prior to CB [12, 13], indicating that CVL followed by CB represents a feasible sampling strategy for assessing T cell immunobiology of the genital mucosa. In a comparison with CB samples collected without preceding FS from 6 women over 12 visits, we noted that CB yields obtained were not significantly reduced by a prior FS (S1 Fig). CD4 T cell yields from the FS positively correlated with yields from CB indicating similarity in compartments accessed by both procedures (Fig 1C). Consistently, CD4 T cell yields from the first and second CB were strongly correlated with each other (Fig 1C). In terms of T cell distribution, CD4 T cells (as % of CD45⁺) in CB were comparable to peripheral blood, both of which were enriched for CD4 T cells relative to CVL and FS (Fig 1D). We noted a strong correlation in distribution of CD4 T cells between CB1 and CB2, indicating similarity of subpopulation profiles between the two methods (Fig 1D). In summary, CB sampling yields higher numbers of CD4 T cells compared to FS and CVL, and two consecutive CBs provide highest recovery of CD4 T cells.

The female genital tract mucosa is enriched with CD4 T cells expressing CCR5 and markers of activation relative to blood across all FGT sampling methods

We next examined CD4 T cells for expression of markers significant for HIV acquisition, HIV co-receptors, binding proteins, and markers of activation, from cells derived from each sampling method. Characteristic of enrichment of antigen-experienced T cells within effector compartments, a majority of CD4 T cells (> 85%) within the genital compartment regardless of sampling method expressed CD45RO relative to an average of 50% within peripheral blood CD4 T cells (Fig 2A). Therefore, to obtain an accurate representation of CD4 T cell phenotype between peripheral and mucosal compartments, phenotypic analysis was performed on memory (CD45RO⁺) CD4 T cells. We used a cut-off of 100 events within the CD45RO⁺CD4⁺ gate as criterion for further phenotypic analysis. Examination of CCR5 (histogram, Fig 2A and 2B) demonstrated significant enrichment of CCR5⁺ CD4 T cells in genital CD4 T cells derived from all FGT sampling methods (median CVL 35.1%; FS 37.9%; CB1 39.2%; CB2 32.7%) relative to peripheral blood (median 13.9%; $p < 0.001$). The frequency of CCR5⁺ memory CD4 T cells did not differ across the 3 genital sampling methods. In contrast, CXCR4 expression was significantly higher within memory CD4 T cells in the blood (median 36.8%) compared to CVL (median 29.7%; $p < 0.05$), FS (median 19.6%; $p < 0.0001$), CB1 (median 21.3%; $p < 0.001$), and CB2 (median 20.3%; $p < 0.001$). Within genital sampling methods, CXCR4 expression was significantly higher in CVL relative to FS, CB1, or CB2 (all $p < 0.01$). Expression of $\alpha_4\beta_7$ was comparable in mucosal samples and blood with a median of 25–35% (Fig 2B), but we noted that per-cell expression of $\alpha_4\beta_7$ was higher in blood relative to mucosal samples (Fig 2A, histogram) indicating possible down-regulation of $\alpha_4\beta_7$ upon migration to genital mucosa.

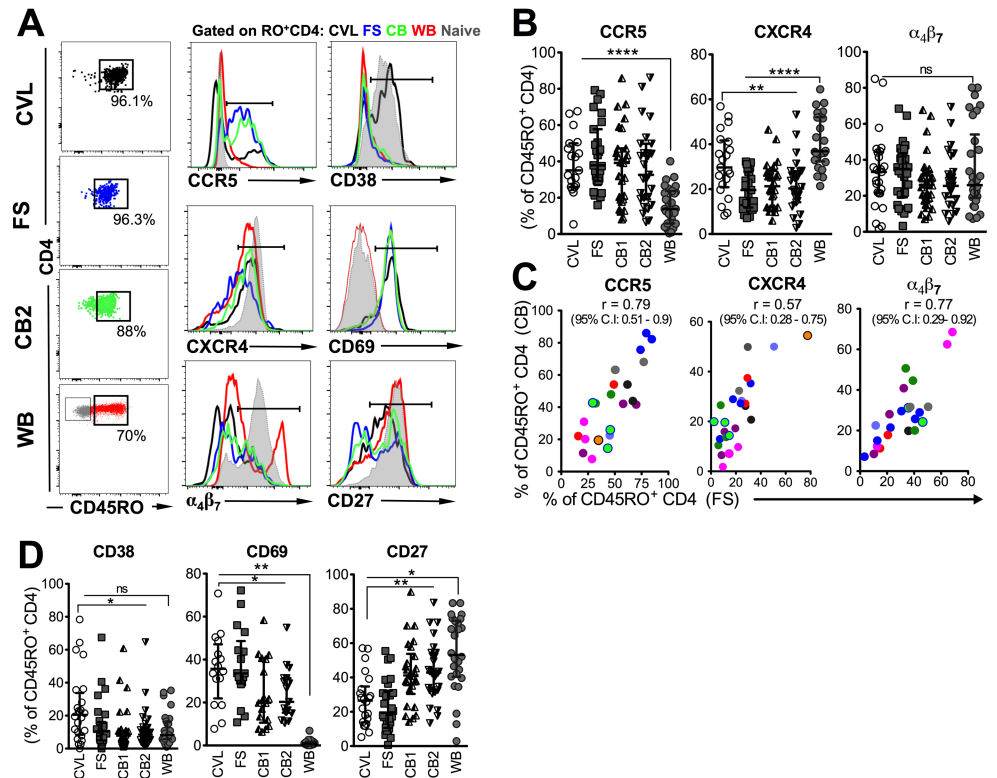


Fig 2. Enrichment of CD4 T cells expressing CCR5 and markers of activation in genital mucosa relative to blood. (A) Representative flow plots show that CD4 T cells from CVL, FS and CB are highly enriched for antigen-experienced CD4 T cells as evidenced by expression of CD45RO. Histograms show comparison of expression of CCR5, CD38, CXCR4, CD69, $\alpha_4\beta_7$ and CD27 on genital and whole blood (WB) CD4 T cells. Naive CD4 T cells are overlaid in grey. (B) Distribution of HIV co-receptors CCR5 (n = 16 visits for CVL, 24 visits for FS, CB1, CB2, and WB), CXCR4 (n = 19 visits for CVL, 21 visits for FS, 22 visits for CB1, CB2, and WB), and expression of the integrin $\alpha_4\beta_7$ (n = 22 visits for CVL, 27 visits for FS, CB1, CB2, and WB) on mucosal and blood CD4 T cells. (C) Correlation of CCR5, CXCR4 and $\alpha_4\beta_7$ expression on FS and CB. (D) Distribution of activation markers CD38 (n = 21 visits for CVL, 25 visits for FS, CB1, CB2, and WB), CD69 (n = 14 visits for CVL, 15 visits for FS, CB1, CB2, and WB) and CD27 (n = 19 visits for CVL, 23 visits for FS, CB1, CB2, and WB) on mucosal and blood CD4 T cells (****, p < 0.0001; **, p < 0.01; *, p < 0.05).

<https://doi.org/10.1371/journal.pone.0178193.g002>

Consistent with both methods sampling endocervical areas, the expression profiles of CCR5, CXCR4, $\alpha_4\beta_7$ and on CD4 T cells correlated between FS and CB samples (Fig 2C) but not between CVL and CB (S2 Fig). CD4 T cells derived from CB samples without visible blood had higher CCR5 and $\alpha_4\beta_7$ expression than those with visible blood (S3 Fig). Together these data indicate that HIV target cells (CCR5⁺ CD4 T cells) are highly enriched in the FGT, and CD4 T cells derived from all 3 genital sampling methods express HIV binding proteins.

Next, we examined expression of markers of T cell activation across compartments. Expression of the cyclic ADP ribose hydrolase, CD38, was significantly higher in CVL-derived CD4 T cells (Fig 2D, median 21.5%) relative to blood (median 8.2%; p < 0.05), FS (median 9.4%; p < 0.05), and CBs (CB1 median 7.89%, CB2 8.48%; both p < 0.05). Expression of CD69, the acute marker of T cell activation and tissue retention, revealed that a greater proportion of FGT associated CD4 T cells derived from CVL (35.7%), FS (33.6%), CB1 (19.9%), and CB2 (20.3%) expressed CD69 relative to blood (0.97% p < 0.01). This attribute is consistent with the phenotype of T cells in vaginal mucosa, which are typically identified based on expression of CD69 [15]. Finally, consistent with an effector-memory phenotype, CD4 T cells within the FGT expressed significantly lower frequencies of CD27 relative to cells in the blood (median

CVL, 26.5%; FS, 19.25%; CB1, 41.2%; CB2, 42.9%; blood, 53.1%). Within genital sampling methods, CVL-derived CD4 T cells expressed higher CD38, higher CD69, and lower CD27 frequencies relative to FS or CB-derived CD4 T cells. There were no differences in activation marker expression on CD4 T cells derived from CB samples without versus with visible blood (S3 Fig). Together, these data show enrichment of activated (CD69⁺ CD27^{lo}) CD4 T cells in the FGT with higher enrichment of this effector subset in CVL samples.

When comparing expression of HIV co-receptors, binding proteins, and activation markers among CB1 samples with versus without visible blood, CD4 T cells derived from CB without visible blood had higher CCR5 and $\alpha_4\beta_7$ expression than those without visible blood.

Phenotype of HIV target CCR5⁺ CD4 T cells in genital mucosa

To better understand HIV susceptibility markers on CD4 T cells within the genital mucosa, we next performed in-depth phenotypic analyses of CCR5⁻ and CCR5⁺ memory CD4 T cells. For these analyses, we combined two sequentially collected CBs based on the preceding findings of higher cellular yield in CB samples. Because cell yields in the CCR5⁻ and CCR5⁺ subsets in the CVL and FS were insufficient for in-depth phenotypic comparisons, this analysis was performed in CB samples only. In addition, we contrasted CD4 T cell subsets in CB and blood to capture distinctive characteristics of HIV target CD4 T cells within the genital mucosa.

First, we evaluated whether CCR5⁺ CD4 T cells were enriched for additional markers of HIV susceptibility. Examination of CXCR4 expression revealed similar distribution profiles within CCR5⁻ and CCR5⁺ subsets in blood and FGT compartments (S4 Fig). On the other hand, CCR5⁺ CD4 T cells expressed higher frequencies of $\alpha_4\beta_7$ in both blood and genital compartments (Fig 3A), indicating enhanced capacity of these cells to both bind HIV and traffic to the gut associated lymphoid tissue where HIV infection may be established.

Next, we asked whether CCR5⁺ cells demonstrated an effector phenotype and were enriched for markers of activation. CCR5⁺ CD4 T cells in the FGT, but not blood, displayed a CD27^{lo} effector phenotype [16] compared with CCR5⁻ cells, indicative of local immune activation (Fig 3B). While expression of CD38 was not higher in CCR5⁺ versus CCR5⁻ CD4 T cells in the FGT (Fig 3C), we found that expression of CD69, which is induced early after activation, was significantly higher in CCR5⁺ versus CCR5⁻ CD4 T cells in the FGT but had negligible expression in blood CD4 T cells regardless of CCR5 expression (Fig 3D). Together, these data show that CCR5 expression identifies activated effector cells within the FGT and that, among those studied, CD69 is strongly associated with CCR5 expression in the FGT.

CD4 T regulatory cells in the genital mucosa express high levels of CCR5

Based on our data showing heightened T cell activation in the FGT, we next sought to determine the frequency and phenotype of immune regulatory CD4 T cells in the FGT and blood. For this purpose, we examined CB samples from 10 women at a single visit either at the follicular (n = 5) or the luteal phase (n = 5) of the menstrual cycle. CD4⁺ T regulatory cells (T_{reg}) are a specialized CD4 T cell subset expressing the forkhead box P3 (FOXP3) transcription factor and maintain immune homeostasis by suppressing proliferation of effector T cells [17]. Tregs constitute 5–10% of blood CD4 T cells in otherwise healthy individuals, but little is known about whether Tregs can be detected in the lower FGT in humans and how their frequencies compare to that in blood.

Of the 10 women sampled, we were able to detect FOXP3 expressing CD4 T cells in discernable numbers (i.e., greater than 50 events) in CB samples from 8 women. CVL and FS samples were not tested. Fig 4A shows a representative flow plot of FOXP3 expressing CD4 T cells in

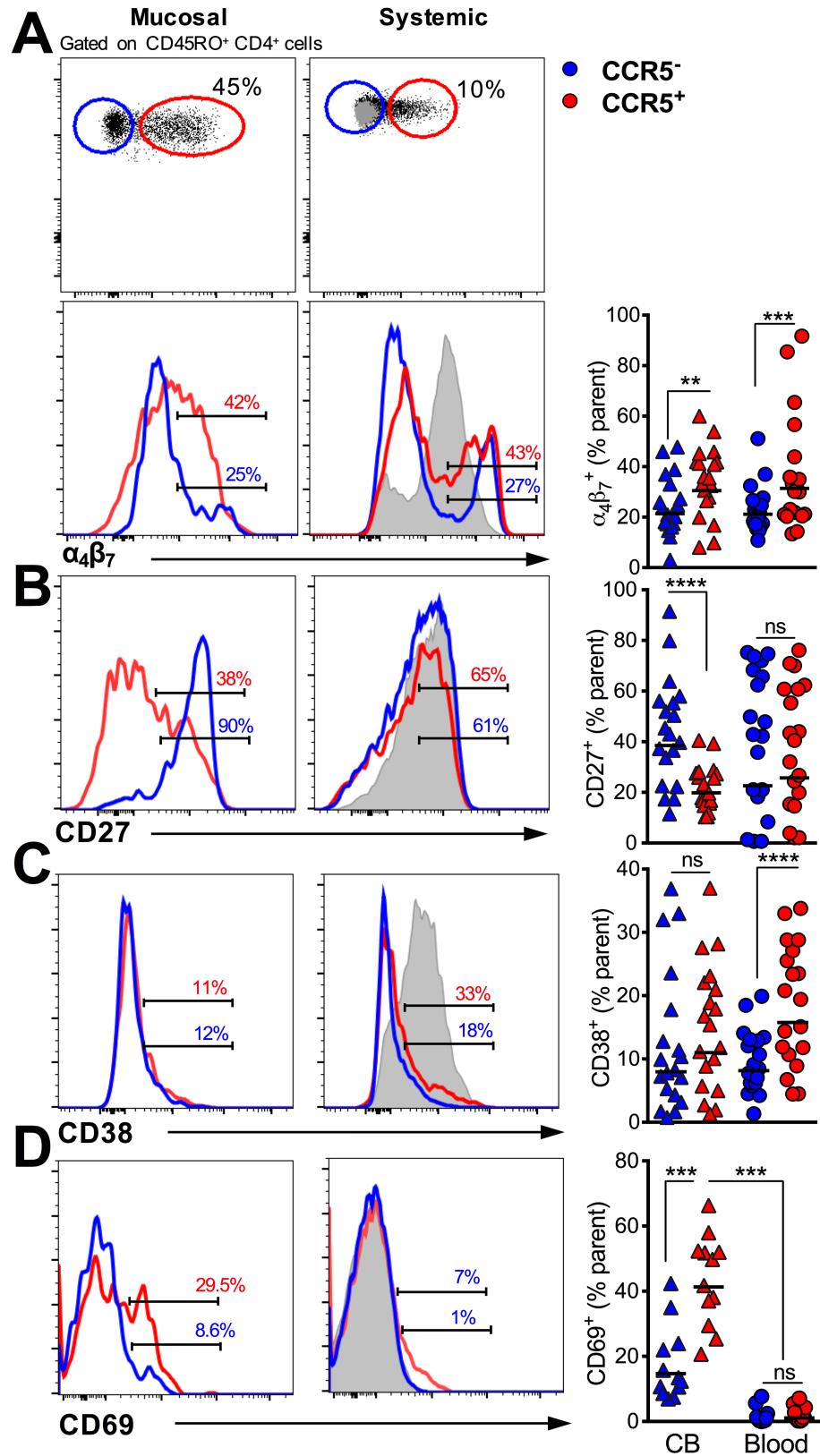


Fig 3. HIV target CCR5⁺ CD4 T cells in female genital mucosa display phenotypic attributes of activation and trafficking to rectal mucosa. Histograms show comparison of expression of markers

between CD45RO⁺ CCR5⁺ and CCR5⁻ cells genital and whole blood CD4 T cells for (A) $\alpha_4\beta_7$, (B) CD27, (C) CD38 and (D) CD69 (***, $p < 0.001$, $n = 20$ participant visits for all markers except CD69 for which $n = 12$ visits)

<https://doi.org/10.1371/journal.pone.0178193.g003>

FGT and blood. We observed significantly higher frequency of Tregs (expressed as % of total CD45RO⁺ CD4 T cells) in CB (median 10%, range 7 to 17%) relative to peripheral blood (median 8%, range 2.5 to 12%). Consistent with phenotype of Tregs, FOXP3⁺ CD4 T cells were more likely to be CD25⁺, relative to non-Tregs (FOXP3⁻ CD45RO⁺) in both the genital mucosa and in the blood (Fig 4B). Because Treg numbers are associated with increased viral acquisition as observed in lymphoid tissue and mucosa in nonhuman primate models [18, 19], we also determined if Tregs preferentially expressed CCR5 in the FGT and blood. The data showed that a higher proportion of Tregs relative to non-Tregs expressed CCR5 in both the blood and FGT (Fig 4C). Together, these data demonstrate the presence of Treg lineage cells expressing CCR5 in the FGT in discernable numbers in the majority of participants sampled.

Discussion

A clear understanding of immune factors that impact HIV acquisition within the FGT is important for systematic evaluation of HIV biomedical prevention strategies. This includes understanding the mucosal impact of candidate HIV PrEP drugs and microbicides, and delineating mucosal immune correlates of vaccine efficacy in HIV vaccine clinical trials for informing the rational design of HIV vaccines. Achieving this goal will require optimizing mucosal sampling strategies that can be used in longitudinal studies for accurate and effective immune profiling within the FGT. Approaches for assessment of humoral responses within the vaginal mucosa are generally well established with several studies demonstrating detection of total and HIV-specific IgG and IgA responses using vaginal swabs [20, 21]. CVL sampling is widely used for measurement of mucosal cytokines, chemokines, and antimicrobial factors [22–24] and recently, measurement of cytokines and antibodies by self-sampling using menstrual cups has been demonstrated as another tool for assessment of soluble immune factors in the genital mucosa [25]. However, there is less clear guidance regarding optimal specimen types for accurate assessment of cellular immune profiles, specifically with regards to in-depth characterization of HIV susceptibility markers on CD4 T cells.

Previous studies have used minimally-invasive methods, such as CVL [26], endocervical flocced swabs [13, 27], cytobrushes [7], and menstrual cup [28], for cellular characterization of the FGT, while others have used more invasive cervical or endometrial biopsies [7, 29] in order to attain sufficient cellular yields, but few studies exist that compare multiple minimally-invasive methods. In this study, we sought to longitudinally characterize and compare T cell yields and phenotypes using 3 minimally-invasive FGT sampling methods. Our data confirm that CD45⁺, CD4⁺, and CD8⁺ T cell recovery was highest from CB relative to FS and CVL and was consistent with one previous multicenter study which demonstrated lower yields with CVL compared to CB or cervical biopsy [12]. Our study additionally showed that FS yields correlated with CB, and FS-derived cells have similar phenotypes to those from CB with lower probability of blood contamination and may therefore provide an alternative to CB in instances where CB collection is not feasible, blood contamination is of concern, or where cells are required for other assays. The frequency of expression of HIV binding proteins CCR5, CXCR4, and $\alpha_4\beta_7$ were similar among memory CD4 T cells derived from each sampling method and also correlated between FS and CB. Relative to CB, CVL-derived CD4 T cells expressed higher CD38, CD69, and lower CD27, indicative of higher activation, and potentially reflecting the different anatomic compartment

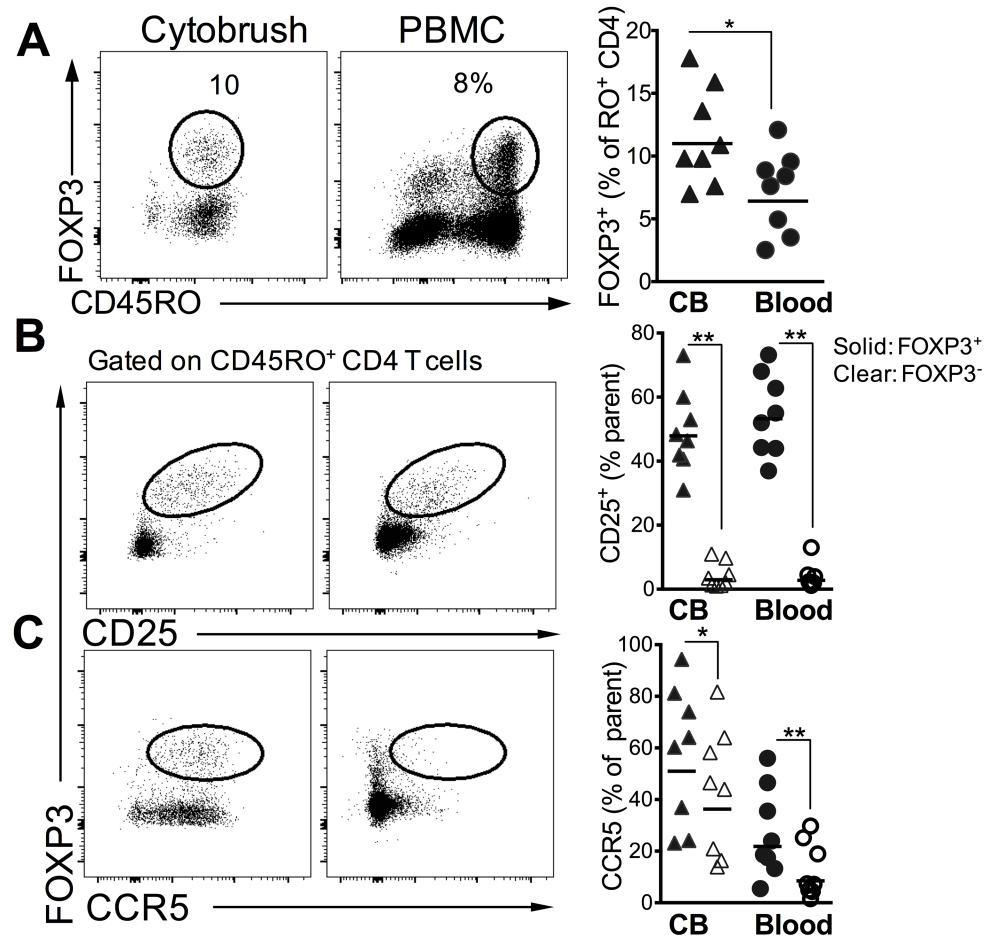


Fig 4. Frequency and phenotype of CD4 T Regulatory cells in the genital mucosa. (A) Representative flow plots showing FOXP3⁺ CD4 T cells in cytobrush and PBMCs (plots are gated on total CD4⁺ T cells). Scatter plot shows frequency of Tregs in 8 participants. (B) shows expression of CD25 and (C) shows CCR5 expression in FOXP3⁺ and FOXP3⁻ CD45RO⁺ cells (**, $p < 0.01$; *, $p < 0.05$ using a two-tailed, paired non-parametric t test

<https://doi.org/10.1371/journal.pone.0178193.g004>

(ectocervix and vagina) sampled using this method compared to FS or CB (endocervix). Our study provides the first comparison of these three minimally-invasive methods during longitudinal assessments in the same women, thereby accounting for intra-individual variability when comparing methods, and suggesting that sampling using one method did not preclude sufficient cell yields from the subsequent method.

By demonstrating the utility of minimally-invasive sampling methods for in-depth FGT investigations, our findings add to the previous literature characterizing FGT-derived CD4 T cell phenotypes and functionality in women at risk for HIV acquisition. Utilizing two consecutive CBs, we demonstrate that CCR5⁺ CD4 T cells are highly enriched within the FGT, CCR5⁺ CD4 T cells are highly activated relative to CCR5⁻ CD4 T cells in the genital mucosa. This phenotype resembles cells within the intestinal lamina propria and intraepithelial lymphocytes in humans [30]. Furthermore, expression of CD69 demonstrates recent activation and is highly consistent with the phenotype of tissue effector memory (TEM) cells, which are highly enriched in mucosa and non-lymphoid immune sites [31]. These cells rapidly produce effector

cytokines upon antigen exposure [32, 33] with mouse studies showing their indispensable role in protection against HSV2 and other mucosal infections [34].

However, due to their activated state and the expression of CCR5, vaginal TEMs represent highly vulnerable HIV target cells, and studies in macaques strongly implicate their role as founder cells contributing to local viral expansion and viral dissemination [9, 35, 36]. With respect to viral dissemination, the expression of $\alpha_4\beta_7$ on activated CCR5 cells in the FGT could also be highly significant. Apart from facilitating HIV binding and entry [37, 38], $\alpha_4\beta_7$ directs migration of cells to gut associated lymphoid tissue [39] and could traffic HIV infected cells from the FGT to sites of active replication in the gut, thereby facilitating establishment of HIV infection [40]. Increase in frequency of $\alpha_4\beta_7^+$ CD4 T cells in the FGT is shown to enhance infection in vaginal explants [11], and blocking $\alpha_4\beta_7$ protects macaques from vaginal SHIV acquisition [10]. Therefore, a better understanding of the phenotype and viral permissivity of CCR5, $\alpha_4\beta_7$ co-expression on target cells in the FGT should be evaluated in future human studies and may be done so using these sampling methods. In addition, based on the relative differences in HIV transmission risk across rectal, cervico-vaginal, and penile routes, these methods could also be used to compare CD4 T cell phenotype and relative activation status across these compartments [8, 41] or understanding the relative role of macrophages versus T cells in HIV susceptibility in each of these distinct mucosal compartments [42, 43].

We demonstrated the presence of Treg lineage cells for the first time in the FGT and in the majority of participants sampled. These Treg lineage cells were more likely to express CCR5, suggesting heightened HIV susceptibility. The frequency of CD4 T regs in blood has previously been shown to correlate with estradiol levels and peak during the late follicular phase of the menstrual cycle when estrogen levels are the highest [44], and estrogen induces *FOXP3* expression *in vitro* [45], thereby supporting their potential contribution to hormonally-mediated changes in HIV susceptibility. Although the present study was not designed to capture dynamic changes in Treg frequencies within the FGT in the presence of varying endogenous or exogenous reproductive hormones, the ability to use longitudinal FGT sampling methods is critical to evaluating changes in these cells in the presence of reproductive hormones in future studies.

This study has some limitations. First, our study included African-American women who met certain HIV risk criteria and may not be generalizable to other populations. African-American women are disproportionately affected by HIV in the United States, and inclusion of African-American women in biological studies are critical to understanding HIV risk in this group. We did not, however, include women under 18 years old, and thus results cannot be extrapolated to adolescent women. Second, the small sample size was insufficient to examine the effects of multiple covariates that can affect T cell phenotype in the female genital tract or even cellular yield, including vaginal infections, the presence of semen, mucosal trauma, endogenous or exogenous hormones, and the vaginal microenvironment including the vaginal microbiome which can impact HIV risk, in part, by altering the phenotype of FGT CD4 T cells [46]. However, since all three sampling strategies were performed on each participant, the presence of these conditions would not have affected between-strategy comparisons. Third, the sequence of sampling was not randomly assigned but rather selected in the order of potential to induce trauma. While it is possible that the sequence affected cellular yields or phenotypes, correlations observed between yields and T cell markers between the second (FS) and third (CB) methods suggest that the order of sampling did not affect results. Additionally, we cannot exclude that the preceding method contributed to additional blood contamination in the subsequent method. However, correlations observed between FS (where less blood contamination was noted) and CB (where more blood contamination was noted) suggest that visible blood contamination does not likely represent peripheral blood, a finding noted in other

studies [12, 47]. Furthermore, for most T cell markers, differences were not observed between CB with versus without visible blood). Finally, while we cannot completely exclude the presence of peripheral blood as a source of genital tract T cells, studies have shown that micro-trauma and bleeding occurs not uncommonly during sex, so these cells are likely to enter the FGT in the setting of potential sexual exposure to HIV and as such are likely still relevant for HIV acquisition.

In conclusion, we show that all three methods may be used for cellular immune profiling in the FGT, but FS and CB sampling methods have the highest cellular yields necessary for in-depth analyses. Notably, CD4 T cells within the FGT express CCR5 and $\alpha_4\beta_7$ and are highly activated, attributes which could act in concert to facilitate HIV acquisition and dissemination within the host [48]. Furthermore, we identified CD4 Treg lineage cells for the first time in the FGT and noted their high expression of CCR5, suggesting that their role in HIV acquisition should be explored in future studies. These sampling methods will allow for further investigation of strategies to reduce immune activation and/or HIV target cells at the genital mucosa as a means to enhance the efficacy of PrEP, microbicides, vaccines, and other biomedical prevention interventions, as well as to understand the potential effect of the mucosal immunity on these biomedical prevention interventions.

Supporting information

S1 Fig. Comparison of total cell yields from CB1 and CB2 either in setting of a prior flopped swab not performed (-, n = 12) versus performed (+, n = 12).

(TIFF)

S2 Fig. Correlation of HIV binding proteins (CCR5, CXCR4 and $\alpha_4\beta_7$) expression on CB and CVL (ns, $p \geq 0.05$ using correlation analysis from the first visit per participant).

(TIFF)

S3 Fig. Comparison of HIV binding proteins (CCR5, CXCR4, and $\alpha_4\beta_7$) and activation markers (CD38, CD27) on first cytobrush (CB1)-derived CD4 T cells from specimens without (qualitative blood score < 1) versus with visible blood (qualitative score ≥ 1).

CD69 analysis not performed due to small sample size (**, $p < 0.01$; *, $p < 0.05$).

(TIF)

S4 Fig. Comparison of expression of HIV co-receptor CXCR4 on CD45RO⁺ CCR5⁺ and CCR5⁻ genital (CB) and whole blood CD4 T cells (ns, $p \geq 0.05$ using linear mixed effects model with random effects for participant and visit).

(TIFF)

S1 Table. Comparison of sample parameters and cell yields between included (n = 25), excluded from all analyses (n = 5) due to high visual blood or low cellular yield, and excluded from Table 2 cell yield analyses due to inadequate staining (n = 8).

(PDF)

Acknowledgments

The authors are grateful to Drs. Francois Villinger, Lyle McKinnon, Rupert Kaul, Alison S. Kohlmeier, and Charlene Dezzutti for helpful suggestions on sample processing and analysis. This study was funded by the NIH (1K23AI114407 to ANS). The $\alpha_4\beta_7$ reagent used in these studies was provided by the NIH Nonhuman Primate Reagent Resource (R24 OD010976, and NIAID contract HHSN 272201300031C). Data in this manuscript were collected by the Women's Interagency HIV Study (WIHS). The contents of this publication are solely the

responsibility of the authors and do not represent the official views of the National Institutes of Health (NIH). Atlanta WIHS Principal Investigators are Ighovwerha Ofotokun and Gina Wingood, U01-AI-103408. The WIHS is funded primarily by the National Institute of Allergy and Infectious Diseases (NIAID), with additional co-funding from the Eunice Kennedy Shriver National Institute of Child Health and Human Development (NICHD), the National Cancer Institute (NCI), the National Institute on Drug Abuse (NIDA), and the National Institute on Mental Health (NIMH). Targeted supplemental funding for specific projects is also provided by the National Institute of Dental and Craniofacial Research (NIDCR), the National Institute on Alcohol Abuse and Alcoholism (NIAAA), the National Institute on Deafness and other Communication Disorders (NIDCD), and the NIH Office of Research on Women's Health. WIHS data collection is also supported by UL1-TR000454 (Atlanta CTSA).

Author Contributions

Conceptualization: RRA IO ANS.

Data curation: ANS SSI MJS NLB.

Formal analysis: SSI MJS CCM ANS.

Funding acquisition: RRA IO ANS.

Investigation: SSI MJS LBH NLB RRA IO ANS.

Methodology: SSI CCM LBH RRA IO ANS.

Project administration: SSI MJS NLB ANS.

Resources: SSI RRA IO ANS.

Software: SSI CCM ANS.

Supervision: SSI RRA IO ANS.

Validation: SSI MJS NLB ANS.

Visualization: SSI NLB RRA ANS.

Writing – original draft: SSI ANS.

Writing – review & editing: SSI LBH RRA IO ANS.

References

1. Mestecky J, Moldoveanu Z, Smith PD, Hel Z, Alexander RC. Mucosal immunology of the genital and gastrointestinal tracts and HIV-1 infection. *Journal of reproductive immunology*. 2009; 83(1–2):196–200. Epub 2009/10/27. PubMed Central PMCID: PMC2802574. <https://doi.org/10.1016/j.jri.2009.07.005> PMID: 19853927
2. Chen NE, Meyer JP, Springer SA. Advances in the prevention of heterosexual transmission of HIV/AIDS among women in the United States. *Infectious disease reports*. 2011; 3(1). Epub 2011/01/01. PubMed Central PMCID: PMC3671603.
3. McKinnon LR, Kaul R. Quality and quantity: mucosal CD4+ T cells and HIV susceptibility. *Current opinion in HIV and AIDS*. 2012; 7(2):195–202. Epub 2012/02/09. <https://doi.org/10.1097/COH.0b013e3283504941> PMID: 22314505
4. Hladik F, Sakchalathorn P, Ballweber L, Lentz G, Fialkow M, Eschenbach D, et al. Initial events in establishing vaginal entry and infection by human immunodeficiency virus type-1. *Immunity*. 2007; 26(2):257–70. PubMed Central PMCID: PMC1885958. <https://doi.org/10.1016/j.immuni.2007.01.007> PMID: 17306567
5. Yi TJ, Shannon B, Prodder J, McKinnon L, Kaul R. Genital immunology and HIV susceptibility in young women. *Am J Reprod Immunol*. 2013; 69 Suppl 1:74–9. Epub 2012/11/20.

6. Prodger JL, Gray R, Kigozi G, Nalugoda F, Galiwango R, Hirbod T, et al. Foreskin T-cell subsets differ substantially from blood with respect to HIV co-receptor expression, inflammatory profile, and memory status. *Mucosal immunology*. 2012; 5(2):121–8. Epub 2011/11/18. PubMed Central PMCID: PMC3288185. <https://doi.org/10.1038/mi.2011.56> PMID: 22089029
7. McKinnon LR, Nyanga B, Chege D, Izulla P, Kimani M, Huibner S, et al. Characterization of a human cervical CD4+ T cell subset coexpressing multiple markers of HIV susceptibility. *J Immunol*. 2011; 187(11):6032–42. Epub 2011/11/04. <https://doi.org/10.4049/jimmunol.1101836> PMID: 22048765
8. Patel P, Borkowf CB, Brooks JT, Lasry A, Lansky A, Mermin J. Estimating per-act HIV transmission risk: a systematic review. *Aids*. 2014; 28(10):1509–19. Epub 2014/05/09. <https://doi.org/10.1097/QAD.000000000000298> PMID: 24809629
9. Zhang Z, Schuler T, Zupancic M, Wietgreffe S, Staskus KA, Reimann KA, et al. Sexual transmission and propagation of SIV and HIV in resting and activated CD4+ T cells. *Science*. 1999; 286(5443):1353–7. Epub 1999/11/13. PMID: 10558989
10. Byrareddy SN, Kallam B, Arthos J, Cicala C, Nawaz F, Hiatt J, et al. Targeting alpha4beta7 integrin reduces mucosal transmission of simian immunodeficiency virus and protects gut-associated lymphoid tissue from infection. *Nature medicine*. 2014; 20(12):1397–400. Epub 2014/11/25. PubMed Central PMCID: PMC4257865. <https://doi.org/10.1038/nm.3715> PMID: 25419708
11. Goode D, Truong R, Villegas G, Calenda G, Guerra-Perez N, Piatak M, et al. HSV-2-driven increase in the expression of alpha4beta7 correlates with increased susceptibility to vaginal SHIV(SF162P3) infection. *PLoS pathogens*. 2014; 10(12):e1004567. Epub 2014/12/19. PubMed Central PMCID: PMC4270786. <https://doi.org/10.1371/journal.ppat.1004567> PMID: 25521298
12. McKinnon LR, Hughes SM, De Rosa SC, Martinson JA, Plants J, Brady KE, et al. Optimizing viable leukocyte sampling from the female genital tract for clinical trials: an international multi-site study. *PloS one*. 2014; 9(1):e85675. Epub 2014/01/24. PubMed Central PMCID: PMC3893217. <https://doi.org/10.1371/journal.pone.0085675> PMID: 24454917
13. Jespers V, Francis SC, van de Wijgert J, Crucitti T. Methodological issues in sampling the local immune system of the female genital tract in the context of HIV prevention trials. *Am J Reprod Immunol*. 2011; 65(3):368–76. <https://doi.org/10.1111/j.1600-0897.2010.00938.x> PMID: 21199064
14. Iyer SS, Gangadhara S, Victor B, Gomez R, Basu R, Hong JJ, et al. Codelivery of Envelope Protein in Alum with MVA Vaccine Induces CXCR3-Biased CXCR5+ and CXCR5- CD4 T Cell Responses in Rhesus Macaques. *J Immunol*. 2015; 195(3):994–1005. Epub 2015/06/28. PubMed Central PMCID: PMC4506863. <https://doi.org/10.4049/jimmunol.1500083> PMID: 26116502
15. Schenkel JM, Fraser KA, Masopust D. Cutting edge: resident memory CD8 T cells occupy frontline niches in secondary lymphoid organs. *J Immunol*. 2014; 192(7):2961–4. Epub 2014/03/07. PubMed Central PMCID: PMC3965619. <https://doi.org/10.4049/jimmunol.1400003> PMID: 24600038
16. Bere A, Denny L, Hanekom W, Burgers WA, Passmore JA. Comparison of polyclonal expansion methods to improve the recovery of cervical cytobrush-derived T cells from the female genital tract of HIV-infected women. *Journal of immunological methods*. 2010; 354(1–2):68–79. Epub 2010/02/13. PubMed Central PMCID: PMC2854893. <https://doi.org/10.1016/j.jim.2010.02.002> PMID: 20149794
17. Jiang J, Kelly KA. Phenotype and function of regulatory T cells in the genital tract. *Current trends in immunology*. 2011; 12:89–94. Epub 2012/01/31. PubMed Central PMCID: PMC3266607. PMID: 22287829
18. Boasso A, Vaccari M, Hryniewicz A, Fuchs D, Nacsa J, Cecchinato V, et al. Regulatory T-cell markers, indoleamine 2,3-dioxygenase, and virus levels in spleen and gut during progressive simian immunodeficiency virus infection. *Journal of virology*. 2007; 81(21):11593–603. Epub 2007/08/24. PubMed Central PMCID: PMC2168803. <https://doi.org/10.1128/JVI.00760-07> PMID: 17715231
19. Miles B, Miller SM, Folkvord JM, Kimball A, Chamanian M, Meditz AL, et al. Follicular regulatory T cells impair follicular T helper cells in HIV and SIV infection. *Nature communications*. 2015; 6:8608. Epub 2015/10/21. PubMed Central PMCID: PMC4616158. <https://doi.org/10.1038/ncomms9608> PMID: 26482032
20. Seaton KE, Ballweber L, Lan A, Donathan M, Hughes S, Vojtech L, et al. HIV-1 specific IgA detected in vaginal secretions of HIV uninfected women participating in a microbicide trial in Southern Africa are primarily directed toward gp120 and gp140 specificities. *PloS one*. 2014; 9(7):e101863. Epub 2014/07/24. PubMed Central PMCID: PMC4108330. <https://doi.org/10.1371/journal.pone.0101863> PMID: 25054205
21. Choi RY, Levinson P, Guthrie BL, Lohman-Payne B, Bosire R, Liu AY, et al. Cervicovaginal HIV-1-neutralizing immunoglobulin A detected among HIV-1-exposed seronegative female partners in HIV-1-discordant couples. *Aids*. 2012; 26(17):2155–63. Epub 2012/09/06. PubMed Central PMCID: PMC3799883. <https://doi.org/10.1097/QAD.0b013e328359b99b> PMID: 22948273

22. Lajoie J, Kimani M, Plummer FA, Nyamiobo F, Kaul R, Kimani J, et al. Association of sex work with reduced activation of the mucosal immune system. *The Journal of infectious diseases*. 2014; 210(2):319–29. Epub 2014/01/15. <https://doi.org/10.1093/infdis/jiu023> PMID: 24421257
23. Bull ME, Legard J, Tapia K, Sorensen B, Cohn SE, Garcia R, et al. HIV-1 shedding from the female genital tract is associated with increased Th1 cytokines/chemokines that maintain tissue homeostasis and proportions of CD8+FOXP3+ T cells. *Journal of acquired immune deficiency syndromes*. 2014; 67(4):357–64. Epub 2014/09/10. PubMed Central PMCID: PMC4213308. <https://doi.org/10.1097/QAI.0000000000000336> PMID: 25202922
24. Nakra NA, Madan RP, Buckley N, Huber AM, Freiermuth JL, Espinoza L, et al. Loss of Innate Host Defense Following Unprotected Vaginal Sex. *The Journal of infectious diseases*. 2015. Epub 2015/10/16.
25. Archary D, Liebenberg LJ, Werner L, Tulsi S, Majola N, Naicker N, et al. Randomized Cross-Sectional Study to Compare HIV-1 Specific Antibody and Cytokine Concentrations in Female Genital Secretions Obtained by Menstrual Cup and Cervicovaginal Lavage. *PloS one*. 2015; 10(7):e0131906. Epub 2015/07/07. PubMed Central PMCID: PMC4492781. <https://doi.org/10.1371/journal.pone.0131906> PMID: 26147923
26. Shacklett BL, Cu-Uvin S, Beadle TJ, Pace CA, Fast NM, Donahue SM, et al. Quantification of HIV-1-specific T-cell responses at the mucosal cervicovaginal surface. *Aids*. 2000; 14(13):1911–5. PMID: 10997394
27. Kyongo JK, Jespers V, Goovaerts O, Michiels J, Menten J, Fichorova RN, et al. Searching for lower female genital tract soluble and cellular biomarkers: defining levels and predictors in a cohort of healthy Caucasian women. *PloS one*. 2012; 7(8):e43951. PubMed Central PMCID: PMC3432048. <https://doi.org/10.1371/journal.pone.0043951> PMID: 22952818
28. Sabbaj S, Hel Z, Richter HE, Mestecky J, Goepfert PA. Menstrual blood as a potential source of endometrial derived CD3+ T cells. *PloS one*. 2011; 6(12):e28894. PubMed Central PMCID: PMC3235171. <https://doi.org/10.1371/journal.pone.0028894> PMID: 22174921
29. Achilles SL, Creinin MD, Stoner KA, Chen BA, Meyn L, Hillier SL. Changes in genital tract immune cell populations after initiation of intrauterine contraception. *American journal of obstetrics and gynecology*. 2014; 211(5):489 e1–9. PubMed Central PMCID: PMC34231025.
30. Agace WW, Roberts AI, Wu L, Greineder C, Ebert EC, Parker CM. Human intestinal lamina propria and intraepithelial lymphocytes express receptors specific for chemokines induced by inflammation. *European journal of immunology*. 2000; 30(3):819–26. Epub 2000/03/31. [https://doi.org/10.1002/1521-4141\(200003\)30:3<819::AID-IMMU819>3.0.CO;2-Y](https://doi.org/10.1002/1521-4141(200003)30:3<819::AID-IMMU819>3.0.CO;2-Y) PMID: 10741397
31. Sathaliyawala T, Kubota M, Yudanin N, Turner D, Camp P, Thome JJ, et al. Distribution and compartmentalization of human circulating and tissue-resident memory T cell subsets. *Immunity*. 2013; 38(1):187–97. Epub 2012/12/25. PubMed Central PMCID: PMC3557604. <https://doi.org/10.1016/j.immuni.2012.09.020> PMID: 23260195
32. Turner DL, Farber DL. Mucosal resident memory CD4 T cells in protection and immunopathology. *Frontiers in immunology*. 2014; 5:331. Epub 2014/07/30. PubMed Central PMCID: PMC4094908. <https://doi.org/10.3389/fimmu.2014.00331> PMID: 25071787
33. Koelle DM, Frank JM, Johnson ML, Kwok WW. Recognition of herpes simplex virus type 2 tegument proteins by CD4 T cells infiltrating human genital herpes lesions. *Journal of virology*. 1998; 72(9):7476–83. Epub 1998/08/08. PubMed Central PMCID: PMC109983. PMID: 9696844
34. Harandi AM, Svennerholm B, Holmgren J, Eriksson K. Differential roles of B cells and IFN-gamma-secreting CD4(+) T cells in innate and adaptive immune control of genital herpes simplex virus type 2 infection in mice. *The Journal of general virology*. 2001; 82(Pt 4):845–53. Epub 2001/03/21. <https://doi.org/10.1099/0022-1317-82-4-845> PMID: 11257190
35. Haase AT. Targeting early infection to prevent HIV-1 mucosal transmission. *Nature*. 2010; 464(7286):217–23. Epub 2010/03/12. <https://doi.org/10.1038/nature08757> PMID: 20220840
36. Joag VR, McKinnon LR, Liu J, Kidane ST, Yudin MH, Nyanga B, et al. Identification of preferential CD4 T-cell targets for HIV infection in the cervix. *Mucosal immunology*. 2015. Epub 2015/04/16.
37. Arthos J, Cicala C, Martinelli E, Macleod K, Van Ryk D, Wei D, et al. HIV-1 envelope protein binds to and signals through integrin alpha4beta7, the gut mucosal homing receptor for peripheral T cells. *Nature immunology*. 2008; 9(3):301–9. Epub 2008/02/12. <https://doi.org/10.1038/ni1566> PMID: 18264102
38. Cicala C, Martinelli E, McNally JP, Goode DJ, Gopaul R, Hiatt J, et al. The integrin alpha4beta7 forms a complex with cell-surface CD4 and defines a T-cell subset that is highly susceptible to infection by HIV-1. *Proceedings of the National Academy of Sciences of the United States of America*. 2009; 106(49):20877–82. Epub 2009/11/26. PubMed Central PMCID: PMC2780317. <https://doi.org/10.1073/pnas.0911796106> PMID: 19933330

39. Petrovic A, Alpdogan O, Willis LM, Eng JM, Greenberg AS, Kappel BJ, et al. LPAM (alpha 4 beta 7 integrin) is an important homing integrin on alloreactive T cells in the development of intestinal graft-versus-host disease. *Blood*. 2004; 103(4):1542–7. Epub 2003/10/18. <https://doi.org/10.1182/blood-2003-03-0957> PMID: 14563643
40. Veazey RS, Lackner AA. HIV swiftly guts the immune system. *Nature medicine*. 2005; 11(5):469–70. Epub 2005/05/06. <https://doi.org/10.1038/nm0505-469> PMID: 15875046
41. Dezzutti CS, Hladik F. Use of human mucosal tissue to study HIV-1 pathogenesis and evaluate HIV-1 prevention modalities. *Curr HIV/AIDS Rep*. 2013; 10(1):12–20. PubMed Central PMCID: PMC4242793. <https://doi.org/10.1007/s11904-012-0148-2> PMID: 23224426
42. Esra RT, Olivier AJ, Passmore JA, Jaspan HB, Harryparsad R, Gray CM. Does HIV Exploit the Inflammatory Milieu of the Male Genital Tract for Successful Infection? *Frontiers in immunology*. 2016; 7:245. PubMed Central PMCID: PMC4919362. <https://doi.org/10.3389/fimmu.2016.00245> PMID: 27446076
43. McClure CP, Tighe PJ, Robins RA, Bansal D, Bowman CA, Kingston M, et al. HIV coreceptor and chemokine ligand gene expression in the male urethra and female cervix. *Aids*. 2005; 19(12):1257–65. PMID: 16052080
44. Arruvito L, Sanz M, Banham AH, Fainboim L. Expansion of CD4+CD25+and FOXP3+ regulatory T cells during the follicular phase of the menstrual cycle: implications for human reproduction. *J Immunol*. 2007; 178(4):2572–8. Epub 2007/02/06. PMID: 17277167
45. Polanczyk MJ, Carson BD, Subramanian S, Afentoulis M, Vandenbark AA, Ziegler SF, et al. Cutting edge: estrogen drives expansion of the CD4+CD25+ regulatory T cell compartment. *J Immunol*. 2004; 173(4):2227–30. Epub 2004/08/06. PMID: 15294932
46. Gosmann C, Anahtar MN, Handley SA, Farcasanu M, Abu-Ali G, Bowman BA, et al. Lactobacillus-Deficient Cervicovaginal Bacterial Communities Are Associated with Increased HIV Acquisition in Young South African Women. *Immunity*. 2017; 46(1):29–37. PubMed Central PMCID: PMC5270628. <https://doi.org/10.1016/j.immuni.2016.12.013> PMID: 28087240
47. Quayle AJ, Shah M, Cu-Uvin S, Politch JA, Chou C, Anderson DJ, et al. Implications of blood contamination for assessment of local cellular immunity in the endocervix. *AIDS Res Hum Retroviruses*. 2004; 20(5):543–6. <https://doi.org/10.1089/088922204323087796> PMID: 15186529
48. Moser M, Legate KR, Zent R, Fassler R. The tail of integrins, talin, and kindlins. *Science*. 2009; 324(5929):895–9. Epub 2009/05/16. <https://doi.org/10.1126/science.1163865> PMID: 19443776