

UC Irvine

Clinical Practice and Cases in Emergency Medicine

Title

Massive Emphysematous Pyelonephritis

Permalink

<https://escholarship.org/uc/item/75j813jz>

Journal

Clinical Practice and Cases in Emergency Medicine, 1(1)

Authors

Jakle, Halsey
Winter, Adria
Pena, Natalie

Publication Date

2017

DOI

10.5811/cpcem.2016.11.32828

Copyright Information

Copyright 2017 by the author(s). This work is made available under the terms of a Creative Commons Attribution License, available at <https://creativecommons.org/licenses/by/4.0/>

Peer reviewed

Massive Emphysematous Pyelonephritis

Halsey Jakle, MD
Adria Winter, MD
Natalie Pena, BS

Kern Medical, Department of Emergency Medicine, Bakersfield, California

Section Editor: Rick A. McPheeters, DO

Submission history: Submitted October 11, 2016; Accepted November 8, 2016

Electronically published January 18, 2017

Full text available through open access at http://escholarship.org/uc/uciem_cpccem

DOI: 10.5811/cpccem.2016.11.32828

[Clin Pract Cases Emerg Med. 2017;1(1):61–62.]

INTRODUCTION

A 58-year-old male presented to an outside hospital with altered mental status and right flank pain for three days. Septic work up, including computed tomography of the abdomen and pelvis, were significant for diabetic ketoacidosis, pyelonephritis, and significant air replacing much of the right kidney, consistent with emphysematous pyelonephritis (Image). The patient was transferred to our facility for a higher level of care.

The patient was stabilized, given intravenous (IV) antibiotics, and admitted to the intensive care unit with a diagnosis of septic shock secondary to emphysematous pyelonephritis.

DISCUSSION

Our case presents an image of a condition that is rare and particularly severe, as shown by free air not only in the right renal parenchyma, but also extending outside the capsule, around the renal vasculature, and into the left perirenal space.

Emphysematous pyelonephritis is a relatively rare infection, seen only 1-2 times per year in a typical busy urological department in the United States. It affects patients with diabetes in 95% of cases. *E. coli* and *Klebsiella* account for over 90% of cases, although *Proteus mirabilis*, *Pseudomonas*, and *Streptococcus* are also seen. Gas accumulates due to rapid necrosis of the renal parenchyma and peri-renal tissue, as

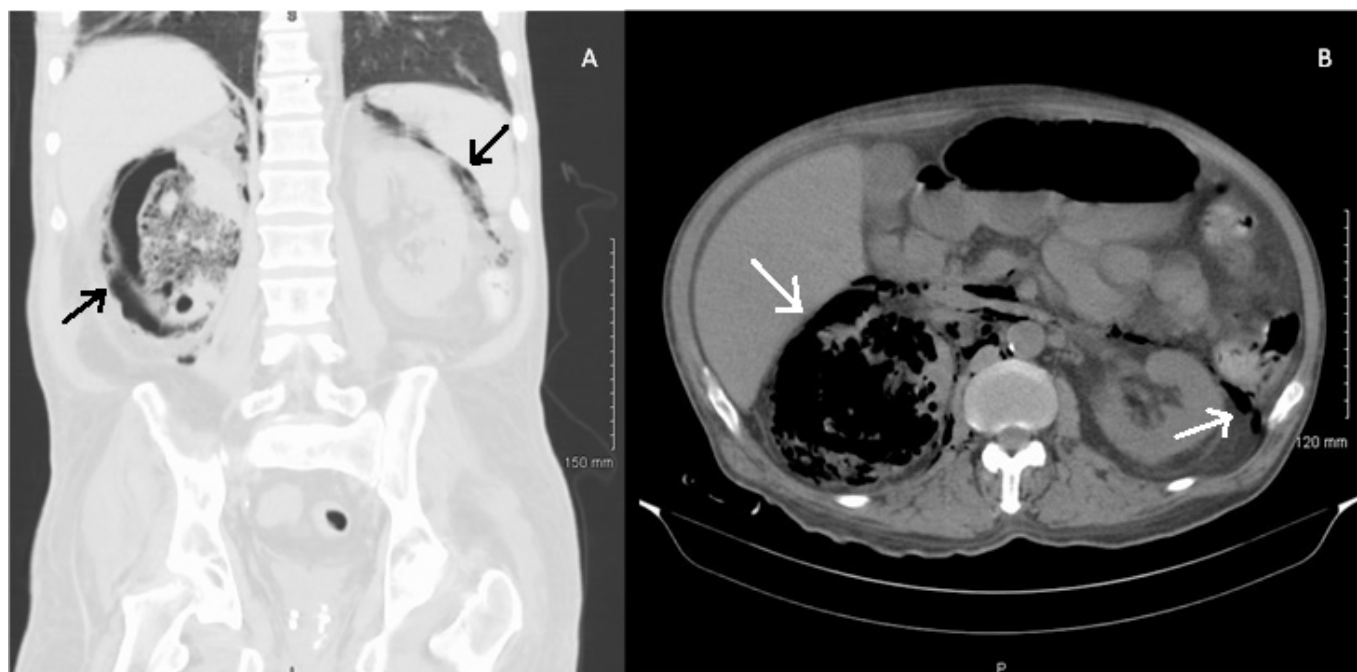


Image. A. Coronal view of a computed tomography (CT) of the abdomen and pelvis, in the lung window, showing bilateral emphysema. B. Axial view of CT of the abdomen and pelvis, without contrast, showing emphysema replacing the right kidney.

opposed to gas appearing as a byproduct of anaerobic bacteria as is the case in necrotizing fasciitis. The condition is fatal if not treated appropriately, and the mainstay of treatment is nephrectomy in conjunction with IV antibiotics for severe, disseminated infection.

Address for Correspondence: Halsey Jakle, MD, Kern Medical Emergency Department, 1700 Mount Vernon Ave, Bakersfield, CA 93306. Email: hjakle@gmail.com.

Conflicts of Interest: By the CPC-EM article submission agreement, all authors are required to disclose all affiliations, funding sources and financial or management relationships that could be perceived as potential sources of bias. The authors disclosed none.

Copyright: © 2017 Jakle et al. This is an open access article distributed in accordance with the terms of the Creative Commons Attribution (CC BY 4.0) License. See: <http://creativecommons.org/licenses/by/4.0/>

REFERENCES

1. May T, Stein A, Molnar R, et al. Demonstrative Imaging of Emphysematous Cystitis. *Urol Case Rep.* 2016;(6):56-7.
2. Ouellet LM, Brook MP. Emphysematous Pyelonephritis: An Emergency Indication for the Plain Abdominal Radiograph. *Ann Emerg Med.* 1988;17(7):722-4.
3. Huang J, Tseng C. Emphysematous pyelonephritis: clinicoradiological classification, management, prognosis, and pathogenesis. *Arch Intern Med.* 2000;160:797-805.