

# UC Agriculture & Natural Resources

## California Agriculture

### **Title**

Australian varieties improve pasture in long-term annual legume trials

### **Permalink**

<https://escholarship.org/uc/item/73n1j565>

### **Journal**

California Agriculture, 55(6)

### **ISSN**

0008-0845

### **Authors**

Graves, Walter L.  
Williams, William A.  
Vaughn, Charles E.  
[et al.](#)

### **Publication Date**

2001-11-01

Peer reviewed

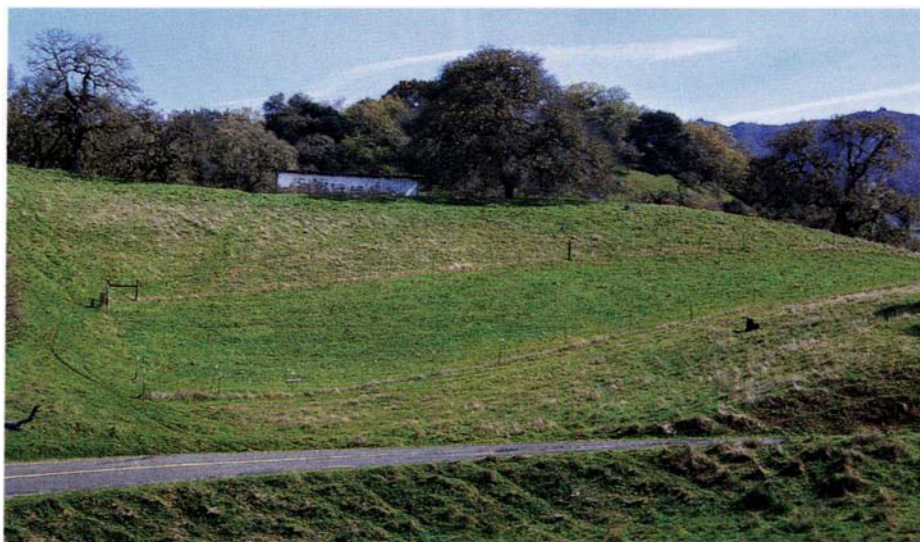
# Australian varieties improve pasture in long-term annual legume trials

Walter L. Graves □ William A. Williams □ Charles E. Vaughn □ Craig D. Thomsen □ Milton B. Jones

**More than 50 Australian legume varieties for rangeland have been introduced commercially since the mid-1980s, but none of them had been tested for their adaptability to California. To determine their viability, in 1990 we planted a number of these varieties at the UC Hopland Research and Extension Center, along with some that were already popular in California. We evaluated them over the course of 10 years, and in 1997 planted 16 more varieties that had been subsequently introduced. Many of the cultivars planted in 1990 persisted to cover more than 50% of the plots, while others covered a smaller portion and several disappeared completely. Our evaluation shows which of the new cultivars are likely to improve rangeland in Northern California coastal areas.**

The UC Hopland Research and Extension Center (HREC) has a long history of rangeland seeding research. Many legume trials have been conducted at Hopland because of its central location in the Coast Range of Northern California and its commitment to evaluating practices that improve rangeland for livestock production in this region.

By the late 1980s, new Australian annual legume cultivars (varieties) were being introduced and marketed at a rapid pace for use on California annual rangelands, but they had not been systematically tested in California. HREC provided a valuable opportunity to test these annual legumes under controlled conditions on range-



**Dozens of Australian legume varieties were tested for 10 years at the UC Hopland Research and Extension Center for their suitability to the soil and climate of California's North Coast rangeland.**

lands used for livestock production. In 1990, the UC Davis department of agronomy and range science and HREC staff initiated a program to evaluate these new introductions for their adaptability. Our purpose was to (1) evaluate these new Australian cultivars and compare them with the earlier commercial varieties for their long-term adaptation and persistence in this zone, and (2) provide updated recommendations for annual legume varieties in the North Coast region.

## **New legume strains**

Annual legumes have long been used for rangeland in regions of the world with Mediterranean climates, such as Australia and California. Both rose (*Trifolium hirtum*) and subclovers (*T. subterraneum*) arrived in California in the 1930s, via Australia or directly from Mediterranean countries. (Subclover is a type of clover that buries its pods; hence its name.) It was recognized early that these clovers were adapted to the annual rangelands of California and that they had the potential to increase livestock production by improving the quality and

availability of winter, spring and early summer forage.

Except for the early release of the California-developed rose clover variety Wilton, most annual legume seeds for commercial sale have been produced in Australia. Annual legume selection and breeding programs in Australia have resulted in the availability of a wide selection of cultivars and strains. One of the major differences among subclover strains is the length of time required for the plant to flower and produce seed, which may vary by as much as 90 days. The broad selection makes it possible to find strains adapted to the range of season lengths in California's diverse rainfall and soil conditions. For example, the late-flowering subclover cultivar Mt. Barker was widely used until 1980 in areas where the average annual rainfall is greater than 25 inches.

Before the late 1970s there was a fairly high incidence of failure in establishing stands of subclover, particularly in northern coastal counties such as Mendocino and at HREC, because commercially available inoculum was not very effective under field condi-

tions. Inoculum consists of ground peat moss used as a carrier for live *Rhizubia* bacteria that is appropriate for the legume type on which it is used. Properly applied, it provides the legume host with atmospheric nitrogen. However, in the 1970s, researchers from Hopland, UC Davis and a commercial inoculant company developed effective, commercially available strains of *Rhizobium* and a successful method of gluing high numbers of these bacteria on the seed. This clover inoculation process encouraged the use of subclovers and other annual legumes for improving North Coast rangeland.

Since the mid-1980s, more than 50 commercial cultivars of annual legumes from the Mediterranean region have been released in Australia for the improvement of rangeland. This Australian program has released cultivars for domestic use and seed export to other countries. It has been nearly 20 years since the UC Cooperative Extension updated seeding recommendations for annual legumes (George et al. 1983; Murphy et al. 1976).

### Seeding test plots

We established the initial annual legume trial before the fall rains on Oct. 4, 1990, on a south-facing 15% slope of common rangeland soil at 700 feet elevation, 1 mile south of HREC headquarters. Resident plants on the site were annual grasses, forbs (broad-leaved herbs), several native legumes and naturalized bur clover (*Medicago polymorpha*). The soil is the Sutherlin series (fine-loamy over clayey, mixed, mesic Ultic Haploxeralfs). The pH of the A-horizon, or topsoil layer, is 6.0. This soil is typical of many of this region in that it is deficient in nitrogen, phosphorus and sulfur. We applied single-superphosphate fertilizer (0-20-0-12) at the rate of 500 pounds per acre over the trial area and lightly disked the surface to prepare the seedbed for planting. We laid out the 4-foot-by-4-foot plots in a checkerboard pattern, with 4-foot borders surrounding each seeded plot. We then broadcast the 44 annual legume entries over each plot at a rate of 40 pounds per acre and replicated them three times in a ran-

TABLE 1. Percent cover (visual estimate) of annual legumes seeded in 1990 at HREC, 1991 and 2000

Annual legume variety	3/3/1991 Early spring cover(%)	5/6/1991 Late spring cover(%)	3/23/2000 Early spring cover (%)	4/24/2000 Middle spring cover (%)	Rank in persistence 4/24/2000
Areces sub	47	33	70	70	4
Coria-Areces sub	11	20	43	47	18
CPI18358A sub	12	16	20	35	23
CPI19451A sub	17	23	43	37	22
CPI70094B sub	11	14	37	28	29
CPI70100 sub	19	27	37	33	26
Daliak sub	16	1	50	27	30
Dalkeith sub	19	2	50	27	31
Enfield sub	57	53	47	47	16
Esperance sub	18	40	80	77	2
Gaitan sub	18	45	53	67	9
Geraldton sub	30	1	57	33	24
Hykon rose	27	40	30	70	6
Junee sub	63	62	73	62	12
Karridale sub	64	67	60	67	8
Koala sub	56	67	47	60	13
Larisa sub	36	43	73	70	5
Monte Frio rose	28	52	33	63	11
Mt. Barker sub	87	87	43	37	21
No. Calif mix subs	27	47	40	53	14
Northam sub	13	11	40	33	25
Nungarin sub	15	3	33	22	32
Orellana sub	38	6	43	40	20
RH-18 rose	20	48	23	33	27
Rosedale sub	17	32	47	50	15
Seaton Park sub	70	43	60	47	17
Span, lines subs	36	22	30	30	28
T-45A sub	13	32	57	63	10
Trikkala sub	22	24	50	43	19
Valmoreno sub	12	28	77	83	1
Wilton rose	18	43	40	70	7
Woogenellup sub	33	36	60	70	3
<b>Disappeared by 2000</b>					
Circle Valley bur medic	28	23			
Flame crimson	43	48			
Lisare cup	8	18			
Paradana balansa	32	22			
Paragosa gama medic	6	8			
Santiago bur medic	25	7			
SCO 0172 bur medic	9	3			
SCO 9001 bur medic	13	8			
Seelu arrowleaf	26	48			
T-115 sweetvetch	1	3			
T-604 bur medic	16	8			
Zodiac murex medic	49	32			
Within-sample date pairwise comparisons least significant difference for P < .05	31	24	26	26	

domized complete block design. Each legume entry was inoculated with its host-specific *Rhizobium* at the rate of 5 pounds of inoculant per 100 pounds of seed.

The 44 entries consisted of 28 subclover strains (19 of *T. subterraneum* subspecies *subterraneum*, seven of *T. s.* subspecies *brachycalycinum* and two of *T. s.* subspecies *yanninicum*), four rose

clovers (*T. hirtum*), one crimson clover (*T. incarnatum*), one cupped clover (*T. cherleri*), one arrowleaf (*T. vesiculosum*), one Balansae (*T. michelianum* var. *balansae*), five bur clovers (*M. polymorpha*), one murex medic (*M. murex*), one gama medic (*M. rugosa*) and one sweetvetch (*Hedysarum coronarium*). After broadcast-seeding these entries, we lightly raked each

plot to cover the seed and fenced the exterior to provide some protection during seedling emergence and early growth.

Following the early spring evaluation of the trial (on March 3, 1991), 20 sheep grazed the enclosed area's seeded plots from April 8 to 12, 1991, to reduce competition from annual grasses and filaree or "pin clover" (*Erodium botrys*). We made a visual estimate of the percentage of establishment in each plot. We made a second late-spring visual estimate on May 6, 1991.

Subsequently, the trial site enclosure was left open for sheep to freely graze and remove summer dry residue buildup. Grazing access was continuously allowed to the trial area in subsequent years. We evaluated the trial each spring through the 1996 season.

In fall 1997, we established 16 Australian cultivars that had since become commercially available, in adjacent 4-foot-by-4-foot plots. We replicated these three times in a randomized complete block design. These 16 entries included 12 cultivars of subclover, two Persian clovers (*T. resupinatum*), one Balansae clover (*T. michelianum* var. *balansae*) and one arrowleaf clover (*T. vesiculosum*). Phosphorus and sulfur fertilizer was applied to all of the plots in fall 1997 and fall 1999, in the form of a triple-superphosphate and elemental sulfur mix (0-36-0-19) at a rate of 150 pounds per acre.

From the end of the 1994 season to the present, we left the trial enclosure open to continuous sheep grazing

pressure of one ewe per 2 acres, as practiced at HREC. We made no attempt to protect the fall 1997 seeding from sheep grazing while the stands were emerging and establishing. We continued the visual groundcover evaluations through spring 2000. We also made visual groundcover evaluations in early and middle spring to properly evaluate early and mid- to late maturing strains. We statistically analyzed the visual groundcover estimates over the 10-year trial period for differences between strains within each evaluation date. We reported the results as a least significant difference for the 5% significance level for each sample date. We made no statistical tests to analyze between-year visual groundcover estimates on a variety-by-variety basis.

### Cultivar performance

The climate at the HREC is Mediterranean with hot, dry summers and mild, rainy winters. Rainfall records for the trial period show that the long-term results of the annual legume persistence trials were not affected by unusually wet or dry periods. The 10-year average annual rainfall (measured from July 1 to June 30) over the trial period was 39.88 inches, slightly higher than the long-term annual rainfall for the station of 37 inches (fig. 1). Rainfall was less than average for five of the years, and the 1993–1994 season



Several subclovers provided excellent cover on dryland pastures after several years. The authors recommend seeding with a mixture of high-performing varieties to optimize forage for livestock.

total rainfall of 23.6 inches was classified a drought year, as it was only 59% of the average rainfall for the 10-year period. Such variation is considered typical.

Early and mid-spring groundcover ratings for the 1990 seedings show when each strain has maximum cover, while the 10-year ratings provide an indication of cultivar persistence (table 1). Though the rainfall total for the establishment year was 69% of the long-term annual average, all of the original clover entries and most of the medics produced the flowers and mature seedpods needed to persist on this site. Only the Paragosa gama medic and T-115 sweetvetch cultivars failed to produce mature seed. Early maturing strains flowered early, produced pods and senesced earlier than other entries, requiring an earlier evaluation to assess their performance. For example, the early maturing cultivars, Daliak, Dalkeith, Geraldton and Nungarin, showed a decline in groundcover from the early to mid-spring. By contrast, some mid- to late maturing strains produced good early groundcover and continued to grow through the mid- to late spring, requiring a mid- to late spring groundcover evaluation to adequately document their performance (table 1).

Only the subclover and rose clovers were well adapted to this site. All of the medics, sweetvetch, cup, crimson and arrowleaf clovers began to decline as early as the 1993–1994 season, and by the 1995–1996 season had completely disappeared (table 1). This indicates that at least 4 to 6 years are needed to properly assess annual legume adaptation in this region.

As of April 24, 2000, 15 of the 44

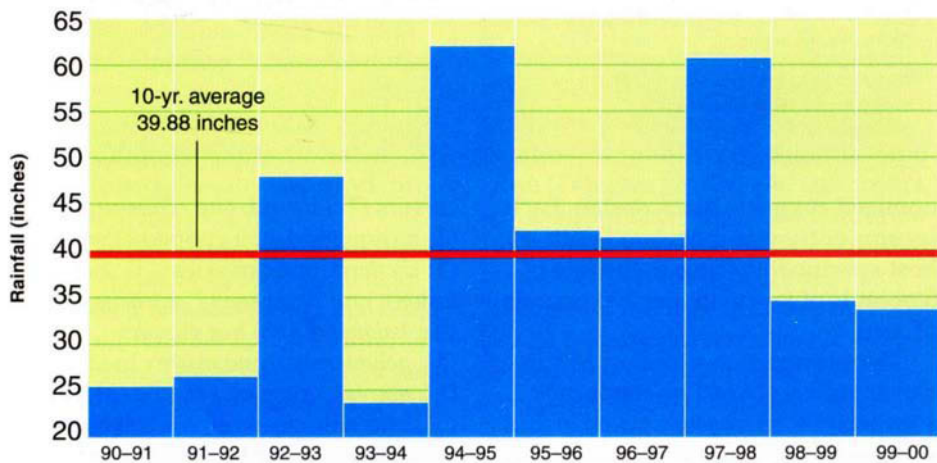


Fig. 1. HREC annual rain-year totals (July 1–June 30).

strains produced a groundcover of 50% or greater, a rating considered excellent by rangeland improvement standards. These 15 strains include both sub- and rose clover cultivars, which agree with earlier recommendations for this region. Some of the best ratings, unfortunately, were achieved by subclover strains that are not presently imported from Australia for sale in California. Many of these are experimental lines; others perform poorly in Australia, so it is not profitable to produce them because California represents such a small portion of the market. Noteworthy are the cultivars Areces, Esperance, Gaitan, Larisa, Valmoreno and an experimental strain, T-45A, from Tunisia. These strains produced only average groundcover in 1991, but improved their stands during the 10-year period. Some of the commercially available sub- and rose clovers did well, including Woogenellup subclover, Wilton rose clover and Monte Frio rose clover. Karridale subclover and Junee subclover remained constant at over 60%. The old standard subclover cultivar Mt. Barker declined in groundcover during the 10-year period. All of the subspecies of the subclover genus are represented in the top 50% of strains adapted to the HREC.

Preliminary results of the 1997 seeding trial indicate that only the

subclover strains improved in groundcover. The Nitro and Prolific Persian clovers, Bolta Balansae clover and Zulu arrowleaf clovers all declined in groundcover, suggesting that these strains are poorly adapted to this area and will eventually disappear from the plots (table 2).

The strains with the greatest improvements in groundcover are Denmark, Gosse and Leura subclovers. Denmark improved from 48% groundcover in 1998 to 73% in 2000, Gosse from 38% to 73% and Leura from 40% to 73%. The groundcover of Hopland J-1, Campeda, Losa, York and Riverina subclovers, also improved during this 3-year period (table 2). However, more time is needed to evaluate long-term persistence before we can make additional recommendations on these strains.

#### North Coast pasture mixtures

The soil and climate of the Hopland site are representative of many in the northern coastal range of California. Although UC Division of Agriculture and Natural Resources guidelines have not yet been updated, results from our research provide information that can be used in making annual legume selections for pasture improvements in the region. Based on the long-term, 10-year results and the preliminary 3-year results, we recommend that annual le-

gume seed mixes for dryland pasture improvements in this region include the commercially available, imported subclover varieties Woogenellup, Karridale, Junee, Leura, Gosse, Denmark, Dalkeith and Losa and the rose clovers Hykon, Wilton and Monte Frio. We also suggest fertilizing at the rates used in this study. With the assistance of HREC staff and other scientists, and continued access to new varieties, we hope to continue testing and evaluating plant species for their suitability to rangeland pastures.

---

*W.L. Graves is Advisor Emeritus, UC Cooperative Extension, San Bernardino and Riverside counties; W.A. Williams is Professor Emeritus, Department of Agronomy and Range Science, UC Davis; C.E. Vaughn is Staff Research Associate, HREC; C.D. Thomsen is Staff Research Associate, UC Davis Department of Agronomy and Range Science; and M.B. Jones is Agronomist Emeritus, UC Davis and HREC Department of Agronomy and Range Science. We acknowledge Pete Sands, for assisting with the original plantings and Bob Keiffer, who conducted a prescribed burn and helped with plot maintenance; David Dyer and his staff at the Natural Resources Conservation Service's Plant Material Center at Lockeford, Calif., for providing seed supplies of many of the experimental lines for annual legumes; Fred Thomas, who helped with the seed companies; Loshe-Mills, Clyde Robin and Kamprath, which provided seeds of many of the annual legume commercial varieties produced in south and western Australia; and Kevin Foster, deputy curator of the Australian Trifolium Genetic Resource Centre of the Western Australia Department of Agriculture, for his willingness to share many of the new and promising lines from his vast clover collection, allowing us to access these lines and cultivars early in their development and to test their performance at HREC.*

#### References

- George MR, Adams TE Jr, Clawson WJ. 1983. Seeded range plants for California. UC DANR Pub 21344, Oakland, CA. 23 p.  
 Murphy AH, Jones MB, Clawson JW, Street JE. 1976. Management of clovers on California annual grasslands. UC DANR Pub 2661, Oakland, CA. 9 p.

TABLE 2. Percent cover (visual estimate) of annual legumes seeded in 1997 at HREC, 1998 and 2000

Annual legume variety	4/8/1998 Middle spring cover (%)	3/23/2000 Early spring cover (%)	4/27/2000 Middle spring cover (%)	4/27/2000 Rank in persistence
Argeles sub	47	47	43	12
Bolta Balansae	50	10	10	15
Campeda sub	52	77	70	5
Denmark sub	48	77	73	3
Gosse sub	38	77	73	2
Goulburn sub	53	57	50	10
GR-508 sub	43	70	47	11
Hopland J-1 sub	57	63	70	4
Leura sub	40	63	73	1
Limbara sub	43	63	63	7
Losa sub	53	67	65	6
Nitro Persian	38	27	12	14
Prolific Persian	27	17	7	16
Riverina sub	40	70	53	9
York sub	45	63	53	8
Zulu arrowleaf	45	10	12	13
Within-sample date pairwise comparisons least significant difference for P < .05 =	29.1	28	30	