

# UCSF

## UC San Francisco Previously Published Works

### Title

Targeting ABL-IRE1 $\alpha$  Signaling Spares ER-Stressed Pancreatic  $\beta$  Cells to Reverse Autoimmune Diabetes

### Permalink

<https://escholarship.org/uc/item/72p541rc>

### Journal

Cell Metabolism, 25(5)

### ISSN

1550-4131

### Authors

Morita, Shuhei  
Villalta, S Armando  
Feldman, Hannah C  
et al.

### Publication Date

2017-05-01

### DOI

10.1016/j.cmet.2017.04.026

Peer reviewed

# Targeting ABL-IRE1 $\alpha$ Signaling Spares ER-Stressed Pancreatic $\beta$ Cells to Reverse Autoimmune Diabetes

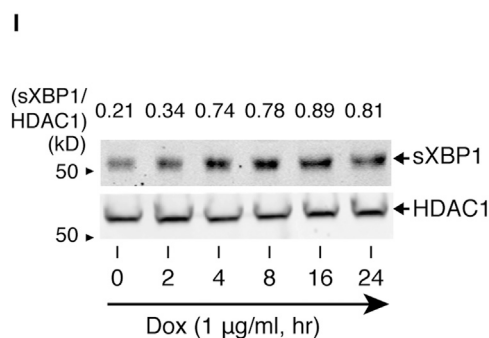
Shuhei Morita, S. Armando Villalta, Hannah C. Feldman, Ames C. Register, Wendy Rosenthal, Ingeborg T. Hoffmann-Petersen, Morvarid Mehdizadeh, Rajarshi Ghosh, Likun Wang, Kevin Colon-Negron, Rosa Meza-Acevedo, Bradley J. Backes, Dustin J. Maly,\* Jeffrey A. Bluestone,\* and Feroz R. Papa\*

\*Correspondence: [djmaly@uw.edu](mailto:djmaly@uw.edu) (D.J.M.), [jeff.bluestone@ucsf.edu](mailto:jeff.bluestone@ucsf.edu) (J.A.B.), [frpapa@medicine.ucsf.edu](mailto:frpapa@medicine.ucsf.edu) (F.R.P.)  
<http://dx.doi.org/10.1016/j.cmet.2017.04.026>

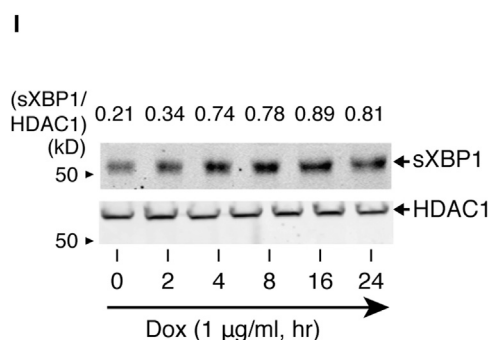
(Cell Metabolism 25, 883–897; April 4, 2017)

In the originally published version of this article, the immunoblot image of the HDAC1 nuclear extract protein control in Figure 3I was incorrectly cropped such that it included one extraneous lane. The corrected and original versions of Figure 3I are shown here. Furthermore, in the Discussion, after the sentence “Such compensatory, dysregulated UPR effects may be general as *Perk* deletion, likewise, hyperactivates IRE1 $\alpha$  in  $\beta$  cells, which suffer early apoptosis, leading to postnatal diabetes,” we incorrectly cited Harding, H.P., and Ron, D. (2002). Endoplasmic reticulum stress and the development of diabetes: a review. *Diabetes* 51, S455–S461. The correct citation is: Harding, H.P., Zeng, H., Zhang, Y., Jungries, R., Chung, P., Plesken, H., Sabatini, D.D., and Ron, D. (2001). Diabetes mellitus and exocrine pancreatic dysfunction in *perk*<sup>-/-</sup> mice reveals a role for translational control in secretory cell survival. *Molecular Cell* 7, 1153–1163. The authors apologize for any confusion these errors may have caused.

© 2017 Elsevier Inc.



**Figure 3I. ABL Family Tyrosine Kinases Are Necessary and Sufficient for Driving T-UPR-Mediated Apoptosis through IRE1 $\alpha$  (corrected)**



**Figure 3I. ABL Family Tyrosine Kinases Are Necessary and Sufficient for Driving T-UPR-Mediated Apoptosis through IRE1 $\alpha$  (original)**