

# UC San Diego

## UC San Diego Previously Published Works

### Title

Demonstration of Non-Gaussian Restricted Diffusion in Tumor Cells Using Diffusion Time-Dependent Diffusion-Weighted Magnetic Resonance Imaging Contrast

### Permalink

<https://escholarship.org/uc/item/6xb62123>

### Authors

Hope, Tuva R  
White, Nathan S  
Kuperman, Joshua  
[et al.](#)

### Publication Date

2016

### DOI

10.3389/fons.2016.00179

Peer reviewed



# Demonstration of Non-Gaussian Restricted Diffusion in Tumor Cells Using Diffusion Time-Dependent Diffusion-Weighted Magnetic Resonance Imaging Contrast

## OPEN ACCESS

Tuva R. Hope<sup>1,2\*</sup>, Nathan S. White<sup>3</sup>, Joshua Kuperman<sup>3</sup>, Ying Chao<sup>4</sup>, Ghiam Yamin<sup>3</sup>, Hauke Barch<sup>3</sup>, Natalie M. Schenker-Ahmed<sup>3</sup>, Rebecca Rakow-Penner<sup>3</sup>, Robert Bussell<sup>3</sup>, Natsuko Nomura<sup>4</sup>, Santosh Kesari<sup>4</sup>, Atle Bjørnerud<sup>1,5</sup> and Anders M. Dale<sup>3,4</sup>

### Edited by:

Zaver Bhujwala,  
Johns Hopkins School of Medicine,  
USA

### Reviewed by:

Goutam Chakraborty,  
Memorial Sloan Kettering Cancer  
Center, USA  
Jiangyang Zhang,  
New York University School of  
Medicine, USA  
Samata Kakkad,  
Johns Hopkins School  
of Medicine, USA

### \*Correspondence:

Tuva R. Hope  
tuvrah@gmail.com

### Specialty section:

This article was submitted to  
Cancer Imaging and Diagnosis,  
a section of the journal  
Frontiers in Oncology

**Received:** 18 September 2015

**Accepted:** 19 July 2016

**Published:** 02 August 2016

### Citation:

Hope TR, White NS, Kuperman J,  
Chao Y, Yamin G, Barch H,  
Schenker-Ahmed NM, Rakow-  
Penner R, Bussell R, Nomura N,  
Kesari S, Bjørnerud A and Dale AM  
(2016) Demonstration of Non-  
Gaussian Restricted Diffusion in  
Tumor Cells Using Diffusion  
Time-Dependent Diffusion-Weighted  
Magnetic Resonance Imaging  
Contrast.  
*Front. Oncol.* 6:179.  
doi: 10.3389/fonc.2016.00179

<sup>1</sup>The Interventional Centre, Oslo University Hospital, Oslo, Norway, <sup>2</sup>Department of Circulation and Medical Imaging, Norwegian University of Science and Technology, Trondheim, Norway, <sup>3</sup>Department of Radiology, University of California San Diego, La Jolla, CA, USA, <sup>4</sup>Department of Neurosciences, University of California San Diego, La Jolla, CA, USA, <sup>5</sup>Department of Physics, University of Oslo, Oslo, Norway

The diffusion-weighted magnetic resonance imaging (DWI) technique enables quantification of water mobility for probing microstructural properties of biological tissue and has become an effective tool for collecting information about the underlying pathology of cancerous tissue. Measurements using multiple  $b$ -values have indicated biexponential signal attenuation, ascribed to “fast” (high ADC) and “slow” (low ADC) diffusion components. In this empirical study, we investigate the properties of the diffusion time ( $\Delta$ )-dependent components of the diffusion-weighted (DW) signal in a constant  $b$ -value experiment. A xenograft glioblastoma mouse was imaged using  $\Delta = 11$  ms, 20 ms, 40 ms, 60 ms, and  $b = 500$ – $4000$  s/mm<sup>2</sup> in intervals of 500 s/mm<sup>2</sup>. Data were corrected for EPI distortions, and the  $\Delta$ -dependence on the DW-signal was measured within three regions of interest [intermediate- and high-density tumor regions and normal-appearing brain (NAB) tissue regions]. In this study, we verify the assumption that the slow decaying component of the DW-signal is non-Gaussian and dependent on  $\Delta$ , consistent with restricted diffusion of the intracellular space. As the DW-signal is a function of  $\Delta$  and is specific to restricted diffusion, manipulating  $\Delta$  at constant  $b$ -value (cb) provides a complementary and direct approach for separating the restricted from the hindered diffusion component. We found that  $\Delta$ -dependence is specific to the tumor tissue signal. Based on an extended biexponential model, we verified the interpretation of the diffusion time-dependent contrast and successfully estimated the intracellular restricted ADC, signal volume fraction, and cell size within each ROI.

**Keywords:** MRI, xenograft tumor model, DWI, restricted diffusion, diffusion time-dependence, glioblastoma multiforme, cancer

**Abbreviations:**  $\Delta$ , diffusion time; cb, constant  $b$ -value; DTD, diffusion time-dependent; NAB, normal-appearing brain; RSI, restriction spectrum imaging.

## INTRODUCTION

The diffusion-weighted magnetic resonance imaging (DWI) technique enables probing of microstructural properties of biological tissue and is frequently used as an imaging biomarker for the detection and quantification of the underlying pathology of cancerous tissue.

The diffusion-weighted (DW) signal from a biological medium using pulsed-gradient spin echo measurements is commonly modeled with the following equation:

$$S(b, TE) = S_0 \exp(-TE/T_2) \exp(-b \cdot \text{ADC}) \quad (1)$$

where  $T_2$  is the spin-spin relaxation time, ADC is the apparent diffusion coefficient of the medium, and  $S_0$  is the MR signal with no applied diffusion- or  $T_2$ -weighting. TE is the echo time of the experiment and  $b$  is the diffusion signal weighting given by (1)

$$b = \gamma^2 G^2 \delta^2 \left( \Delta - \frac{\delta}{3} \right) \quad (2)$$

here,  $\gamma$  is the gyromagnetic constant,  $G$  is the diffusion gradient amplitude,  $\delta$  is the gradient duration, and  $\Delta$  is the diffusion time given by the separation time between the two applied diffusion gradients.

Diffusion-weighted magnetic resonance imaging and corresponding ADC maps is considered a highly promising imaging biomarker of high-grade tumor tissue as it allows, for characterization of tumor pathology demonstrating, a negative correlation between tumor cell density and ADC (2, 3). However, despite the high cellularity of these tumors, the ADC has limited specificity as concomitant edema and tumor-related necrosis has shown to increase the ADC values and thereby opposing the reduced ADC associated with the tumor (4, 5).

Measurements using multiple  $b$ -values have indicated a biexponential signal attenuation, ascribed to “fast” (high ADC) and “slow” (low ADC) diffusion components within a tissue (6–10). The “fast” diffusion component is normally assumed to correspond to the hindered diffusion of free water molecules colliding with cellular borders with a Gaussian diffusion displacement probability where mean squared displacement is given by  $\langle r^2 \rangle = 6\text{ADC}\Delta$  (11). As hindered ADC of the brain is related to the intrinsic diffusion coefficient of extracellular water ( $D_{\text{ex}}$ ) and the tortuosity of the tissue ( $\lambda$ ) by  $\text{ADC}_h = D_{\text{ex}}/\lambda^2$ , where  $1 < \lambda < 1.8$  (about 1.5 for healthy brain tissue) (12–15) and  $D_{\text{ex}} \sim 3 \mu\text{m}^2/\text{ms}$  (4), DW-signals from hindered compartments are strongly attenuated at high  $b$ -values ( $b > \lambda^2/D_{\text{ex}}$ ). The “slow” diffusion component exhibits a lower ADC (slower signal decay) compared to the fast, hindered ADC and is most commonly associated with restricted diffusion of spins (water) trapped within confined compartments (6, 10, 13, 16, 17). However, the slow diffusion component has also been proposed to represent increased tortuosity or slower intrinsic diffusivity, which can also be associated with decreased ADC (18, 19), hence the basic mechanism underlying the slow ADC still remains unclear.

There is a fundamental difference in diffusion physics between water molecules that are hindered (and free) versus restricted. At the time scales measured by most DWI experiments ( $\Delta \sim 20$ –60 ms),

hindered and free water molecules follow a Gaussian displacement probability distribution, whereas restricted water molecules demonstrate non-Gaussian displacement probability due to physical restrictions imposed on intracellular water molecules by plasma membranes. The mean square distance traveled by intracellular restricted spins,  $\langle r^2 \rangle$ , is therefore a function of the size ( $d$ ) and shape of the cellular compartments as well as the intrinsic diffusivity of intracellular water ( $D_{\text{intra}}$ ) (13, 20–22). At the “short diffusion time regime” (i.e.,  $d^2 \gg 2D_{\text{intra}}\Delta$ ), diffusion will be largely unrestricted as only spins near the cellular membranes will experience the confining borders. The measured ADC is then dictated by the  $D_{\text{intra}}$  of the medium, and the total DW-signal follows monoexponential signal decay (Eq. 1) consistent with Gaussian diffusion behavior. When increasing  $\Delta$ , a larger portion of spins will come in contact with the plasma membrane, resulting in an increased signal contribution from restricted diffusion and decreasing ADC. In this diffusion time regime, the total DW-signal no longer follows a monoexponential signal decay but, instead, approaches a biexponential signal decay (22). For clinical relevant  $\Delta$  (50–100 ms), the diffusion time is short relative to the exchange rate between intra- and extracellular compartments (23) but long enough for intracellular spins to repeatedly come in contact with the plasma membrane (i.e.,  $d^2 \gg 2D_{\text{intra}}\Delta$ ). In this time regime, intracellular diffusion approaches a restricted “fill-up” regime where ADC is low (e.g.,  $\text{ADC} \sim 0.1 \mu\text{m}^2/\text{ms}$  at  $\Delta = 60$  ms) (22, 24), and the restricted DW-signal remains present even at high  $b$ -values (7, 13). It is important to note the difference between restricted diffusion, as defined classically as diffusion of water confined within cellular compartments, and “restriction” as reported at short  $\Delta$  when spins are observed to bounce off cellular membranes in oscillating gradient experiments (25, 26). The latter has little effect on the measured ADC of clinical studies (26, 27), and, in this paper, we will use the definition of restricted diffusion as the clinical relevant fill-up of confined space.

Numerous previous studies have modeled the biexponential signal behavior with the assumption that the slow component of the DW-signal attenuation is a consequence of intracellular restriction (6, 20, 28–30). When utilized in cancer imaging, studies show improved tumor contrast-to-noise and reduced sensitivity to extracellular edema when comparing the slow ADC to standard (extracellular) ADC DWI (31–34). Restriction spectrum imaging (RSI) is an advanced DWI modeling technique that isolates the slow diffusion component by separating and removing signal from hindered diffusion. The technique offers a direct measure of tumor cellularity and the results suggest that the restricted water fraction is specifically sensitive to tumor presence, particularly high-grade tumors (35). In this study, we explore the non-Gaussian nature of the DW-signal in order to verify the relationship between the underlying diffusion mechanism of the tissue and the measured slow ADC. As the DW-signal as a function of  $\Delta$  is specific to restricted diffusion, manipulating  $\Delta$  at constant  $b$ -value (cb) provides a complementary and direct approach for separating the restricted from the hindered diffusion component. It follows that subtracting diffusion data acquired at long and short  $\Delta$  using this setup will isolate the  $\Delta$ -dependent non-Gaussian restricted water signal by removing signals from the free and hindered water pools. Thus, using this approach, we

are able to determine the origin of the slow diffusion component of the DW-signal. We demonstrate the  $\Delta$ -dependence of the DW-signal in a human glioblastoma (GBM) xenograft mouse model using a modified *in vivo* imaging protocol that manipulates both  $b$ -values and  $\Delta$ . We further show that our findings are supported by a biexponential signal fit, dependent on  $\Delta$ .

## MATERIALS AND METHODS

This animal study was granted ethical approval through Institutional Animal Care and Use Committee (IACUC) and performed according to their guidelines.

### Xenograft Model

For intracranial glioma xenograft experiments, patient-derived glioma stem cell like cells (cell line designated GBM4) were collected and re-suspended at  $3 \times 10^5$  cell/3  $\mu$ L in HBSS solution and placed on ice until injection (36, 37). Five anesthetized 6-week-old female NSG mice (stock number 005557, Jackson laboratory) were placed on a stereotactic frame with ear bars. A hole was drilled 2 mm lateral and 1.5 mm anterior to the Bregma.  $3 \times 10^5$  cells in 3  $\mu$ L volume were then injected using a Hamilton syringe and needle 2 mm below the skull into the striatum of the brain. Mice were then monitored periodically and euthanized for imaging when neuropathological symptoms were evident. Based on the quality of the MRIs and the histology, one suitable mouse was found suitable for the analysis.

### Magnetic Resonance Imaging

The magnetic resonance imaging (MRI) scans were performed on a 7 T (20 cm bore) Bruker Biospin animal magnet (Bruker Instruments, Ettlingen, Germany) located at the University of California, San Diego, CA, USA, Center for functional-MRI, using a 72 mm ID linear birdcage volume resonator (Bruker) with PIN diode-based active decoupling capability in combination with a two channel local receive array coil (Rapid Biomed).

The imaging protocol included two structural TurboRARE  $T_2$ -weighted with echo TE/TR = 36 ms/5934.8 ms, field of view (FoV) = 1.8 cm, and matrix resolution =  $166 \times 125$ , one with a high slice resolution of slice thickness = 0.2 mm ( $T_{2,high}$ ) and number of slices = 50 and one set with slice resolution ( $T_{2,low}$ ) according to that of the DW images of 10 slices of slice thickness = 1.0 mm. The DWI was performed using a spin echo echo-planar imaging sequence with 8 different  $b$ -values of 500, 1000, 1500, 2000, 2500, 3000, 3500, and 4000 s/mm<sup>2</sup> at fixed gradient duration  $\delta$  = 6 ms, and one  $b$  = 0 acquisition and 6 non-collinear diffusion gradient directions (used for averaging), TE/TR = 79.6 ms/5000 ms, FoV = 1.8 cm, matrix resolution =  $64 \times 64$ , number of slices = 10, and slice thickness = 1 mm. The experiment was repeated for diffusion times, i.e., the timing between the two diffusion weighted gradient pulses, of  $\Delta$  = 11 ms, 20 ms, 40 ms, and 60 ms. Subsequent scans acquired with the different  $\Delta$  were run with constant receiver gain. In addition, one acquisition of a  $b$  = 0 volume using a reverse phase encoding direction was acquired for the correction of intensity distortions associated with the  $B_0$  field (38).

## Histology Preparation and Image Acquisition of Immunofluorescent- and H&E-Stained Samples

Histology slides were obtained to quantify relative cell density measurements within specified regions of interest (ROIs) in order to support any observed difference in the DWI signal. The histology slides and DWI slides were not coregistered due to the limited resolution of the DWIs, and the regions were thus only matched for quantitative verification.

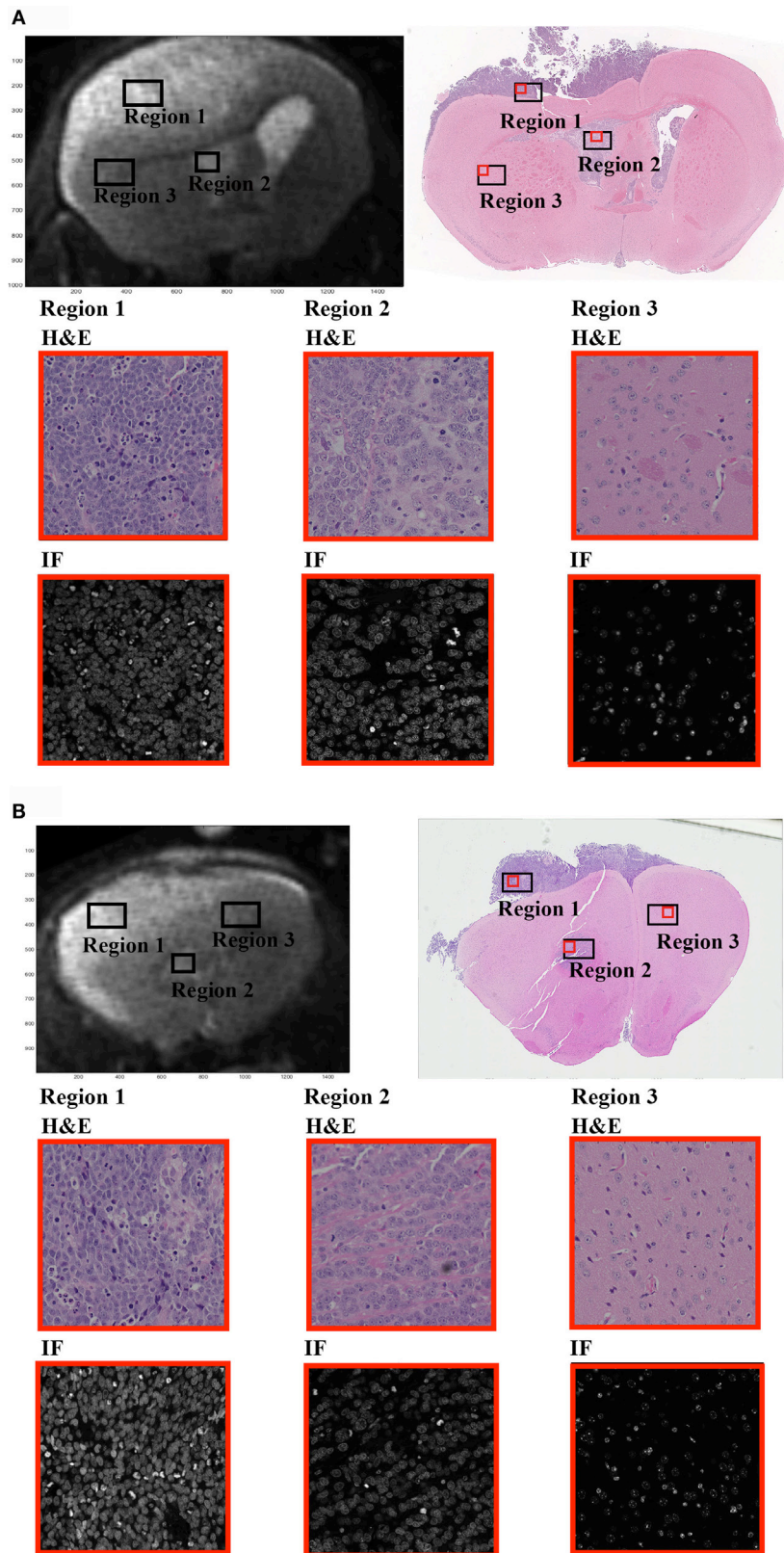
Immediately after the scans, the mouse brain was removed, fixed in 4% paraformaldehyde overnight at room temperature, dehydrated with ethanol, and then embedded in paraffin. 5- $\mu$ m thick mouse brain sections were sliced and placed on glass slides and stained with Hematoxylin & Eosin (H&E). For the immunofluorescence (IF) staining, the 5- $\mu$ m affixed sections were treated with 1 $\times$  Trility™ pretreatment solution (1:20 dilution; Cell Marque, Rocklin, CA, USA) using the manufacturer-described steamer method in order to remove paraffin and prepare the tissue for epitope retrieval. The tissue was then blocked with 10% Donor Goat Serum (GS; Gemini Bio Products, Sacramento, CA, USA) in 1 $\times$  TBS for 1 h and then quickly rinsed twice with TBS. Each sample was incubated with 300  $\mu$ L of 5  $\mu$ g/mL mouse monoclonal anti-CD56 antibody (1:200 dilution; N-CAM clone 123C3, Invitrogen, Carlsbad, CA, USA) (39) for 18 h at RT on an orbital shaker. Each slide was then quickly rinsed with TBS twice and incubated with 300  $\mu$ L of 2  $\mu$ g/mL Alexa Fluor® 568 goat anti-mouse H + L (1:1000 dilution; Invitrogen, Carlsbad, CA, USA) for 26 h at RT on an orbital shaker. The cell nuclei were stained using ProLong® Gold antifade reagent with DAPI (Invitrogen, Carlsbad, CA, USA).

The IF images were acquired with a Keyence BZ-X710 all-in-one fluorescence microscope (Osaka, Japan) using DAPI and Texas Red filter cubes with an S Plan Fluor 0.45NA ELWD 20 $\times$  objective lens. The H&E images were acquired using transmitted light and a 20 $\times$ /0.75 N.A. lens on an Olympus IX81 microscope. Exposure time and White Balance were calculated automatically by the system. All scans were acquired at high resolution (0.37744  $\mu$ m/pixel).

### Image Analysis

All imaging data were processed offline in Matlab [MathWorks, version 8.1.0 (R2013a)] using in-house developed software.

The  $T_{2,low}$  were coregistered to  $T_{2,high}$  using cubic interpolation. The raw DW data were corrected for spatial and intensity distortion caused by the  $B_0$  magnetic field inhomogeneities using the reversing gradient method (38). The EPI-corrected DW images were then coregistered to  $T_{2,low}$  and further to the high resolution space using the same coregistration matrix as applied between  $T_{2,low}$  and  $T_{2,high}$ . Finally, the coregistered DW images and the  $T_{2,high}$  images were resliced according to the histology space using cubic interpolation. We did not fully coregister the histology and MR data due to the low resolution and low number of slices of the DW images compared to that of the histology. Hence, histology slides were used for visual and quantitative validation only. The resliced MRI slices and histology slides used in the study are presented in **Figure 1**. Subsets of DWI data were generated by averaging all directional diffusion data to avoid directional dependency and normalized to the corresponding  $b_0$  acquisition



**FIGURE 1 |** In the presented study, we have investigated the diffusion time ( $\Delta$ )-dependence on the DW-signal within three regions of interest (ROIs) selected from MRI brain images of a single GBM xenograft mouse.

(Continued)

**FIGURE 1 | Continued**

**(A,B)** Display the two MRI slices selected for the study (upper left) along with the corresponding H&E-stained sections (upper right). Region 1 represents the region of high tumor cell density (nuclei coverage ~50%), region 2 of intermediate tumor cell density from within the ventricles (near injection site, nuclei coverage ~35%), and region 3 of normal-appearing brain tissue (nuclei coverage ~10%). Rows 2 and 3 of the figure show 20x magnified sections from within each ROI (red box on the full H&E image). H&E sections are displayed on row 2 and DAPI stained sections on row 3. The ROIs were carefully selected from relevant regions of the brain, and the magnification clearly demonstrates the difference in cellular density between each ROI. Note that the MRIs and the histological slides are not coregistered, only adjusted geometrically and resliced accordingly. The ROIs extracted from the histological slides do not represent a 1:1 selection of regions between the two. Hence, the histological slides are not used for qualitative measurements in the study, and the regions should only be viewed as a quantitative verification based on relative measurements.

to exclude differences in  $T_2$  weighing across the data schemes from the analysis. Subtraction maps were created by subtracting the normalized EPI-corrected averaged signal image acquired at  $\Delta = 11$  ms from the image acquired at  $\Delta = 60$  ms for each  $b$ -value.

Tissue ROIs were drawn based on histology (cell density) and structural  $T_2$ -maps. Two MRI slices were chosen for the analysis, and a set of high, intermediate, and low cellular density ROIs were drawn on both MRI slices and histologic slide separately; the high cell density tumor region (region 1, **Figures 1A,B**) of primary tumor cells (~18.8 mm<sup>3</sup>, ~50% nuclei coverage), the intermediate density tumor region (region 2, **Figures 1A,B**) near the injection site (~7.0 mm<sup>3</sup>, ~35% nuclei coverage), and the low density region of normal-appearing brain tissue (NAB, region 3, **Figures 1A,B**), extracted from the healthy part of the mouse brain (~28.2 mm<sup>3</sup>, ~10% nuclei coverage). All ROIs were drawn in regions of high SNR (i.e., the superior half of the brain, near the surface coil). All histological regions had a cell body size distribution ranging between 3 and 12  $\mu$ m. As the MRIs and H&E slides could only be paired based on visual interpretation, the estimated nuclei coverage and cell size distribution are only evaluated as a quantitative approximation in ROIs in the MRI images and, therefore, not included in the following analysis.

To separate the restricted and hindered diffusion signal, we used a biexponential model for the normalized DW-signal [ $S_n = S/S(TE)$ ]

$$S_n = f \cdot \exp(-b \cdot ADC_r(\Delta, R)) + (1 - f) \cdot \exp(-b \cdot ADC_h) \quad (3)$$

where  $f$  is the restricted DW-signal fraction,  $ADC_h$  and  $ADC_r$  are the hindered (extracellular) and restricted (intracellular) ADC. To avoid over fitting, and due to the small data set, we used literature values for the  $\lambda$  and  $D_{ex}$ , as these parameters have been widely studied previously. The  $ADC_h$  was defined as  $ADC_h = D_{ex}/\lambda^2$ , with  $\lambda = 1.73$  for the high-density tumor region and  $1.46 < \lambda < 1.73$  for intermediate-density tumor region (14), and  $D_{ex} \sim 3 \mu\text{m}^2/\text{ms}$  (4).  $ADC_r$  was modeled for water diffusion restricted within spheres of radius  $R$  using  $\Delta = 11\text{--}60$  ms and  $b = 0\text{--}4000$  s/mm<sup>2</sup> as variables, assuming no exchange between extra and intracellular compartment (20):

$$ADC_r(\Delta, R) = \frac{2}{D_{intra} \delta^2 \left(\Delta - \frac{\delta}{3}\right)} \cdot \sum_{m=1}^{\infty} \frac{\alpha_m^{-4}}{\alpha_m^2 R^2 - 2} \left[ 2\delta - \frac{1}{\alpha_m^2 D_{intra}} \cdot \left( \frac{2 + \exp[-\alpha_m^2 D_{intra}(\Delta - \delta)] - 2\exp[-\alpha_m^2 D_{intra} \delta]}{-2\exp[-\alpha_m^2 D_{intra} \Delta] + \exp[-\alpha_m^2 D_{intra}(\Delta + \delta)]} \right) \right] \quad (4)$$

$R$  is the cell radius,  $D_{intra}$  is the intrinsic intracellular diffusivity previously measured at  $1 \mu\text{m}^2/\text{ms}$  (16, 17),  $\alpha_m$  is the  $m$ -th root of  $(\alpha R) \cdot J'_{3/2}(\alpha R) - \frac{1}{2} J_{3/2}(\alpha R) = 0$ , and  $J$  is the Bessel function. By combining Eqs 3 and 4, cellular radius  $R$ ,  $ADC_r$ , and cellular signal fraction ( $f$ ) were estimated in a voxel-wise analysis for both tumor ROIs using non-linear modeling and minimizing the sum of squares. As the normal tissue had very low SNR at high  $b$ -value, the reduced model in Eq. 3 with constant  $ADC_r$  was used to model the NAB data. Note also that  $f$  is not a direct measure of cellular fraction in this model but is weighted by  $T_2$  relaxation (Eq. 1), which may differ between the two diffusion pools (24).

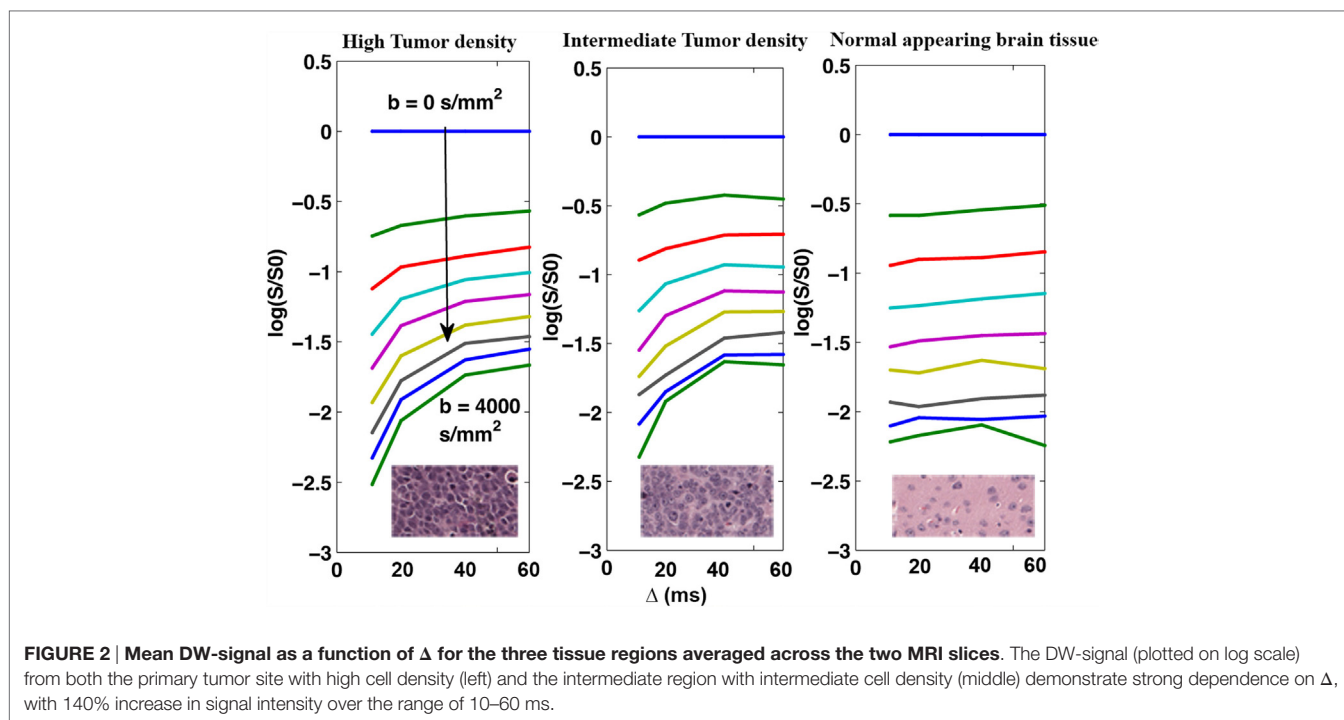
**RESULTS**

The  $\Delta$ -dependency on the restricted DW-signal was measured using DW data acquired with multiple  $\Delta$  at various  $b$ -values in a cb experiment.

**Figure 2** shows the average DW-signals (both slides added together) plotted as a function of  $\Delta$  for the three tissue regions displayed in **Figures 1A,B**. As shown, signals from both intermediate- and high-density tumor regions demonstrate strong  $\Delta$ -dependency (140% signal increase in both regions at  $b = 4000$  s/mm<sup>2</sup>), whereas NAB signal demonstrate minimal dependency of  $\Delta$  (0% signal increase). The  $\Delta$ -dependency of the tumor regions was strongest with high  $b$ -values, indicating that the effect is related to the restricted DW-signal, as predicted.

By subtracting the DW-images acquired at  $\Delta = 11$  ms from images acquired at  $\Delta = 60$  ms, we obtained maps of non-Gaussian diffusion signals [“diffusion time-dependent” (DTD) contrast]. **Figure 3** show the effect of increasing the  $b$ -value on the DTD contrast in terms of signal contrast within each ROI (**Figure 3A**) and subtraction maps (**Figure 3B**). As predicted, the contrast between the NAB regions and the tumor regions is based on the amount of restricted diffusion in each region and is constant at diffusion weighing of  $b = 1500$  s/mm<sup>2</sup> and higher.

The biexponential model was used to extract quantitative parameter estimates and verify the interpretation of the DTD contrast. The parameter estimates can be found in **Table 1**, and plots can be found as Supplementary Material. Generally, the results show a good fit to the real data, and the signal decay of all tissue regions were consistent with a fast and a slow diffusion component. The NAB region demonstrated no  $\Delta$ -dependency and was modeled using a reduced biexponential model, whereas the slow DW-signal component from both tumor regions were highly dependent on  $\Delta$  in tumor regions, consistent with the gradual fill-up of restricted water within the intracellular space.



## DISCUSSION

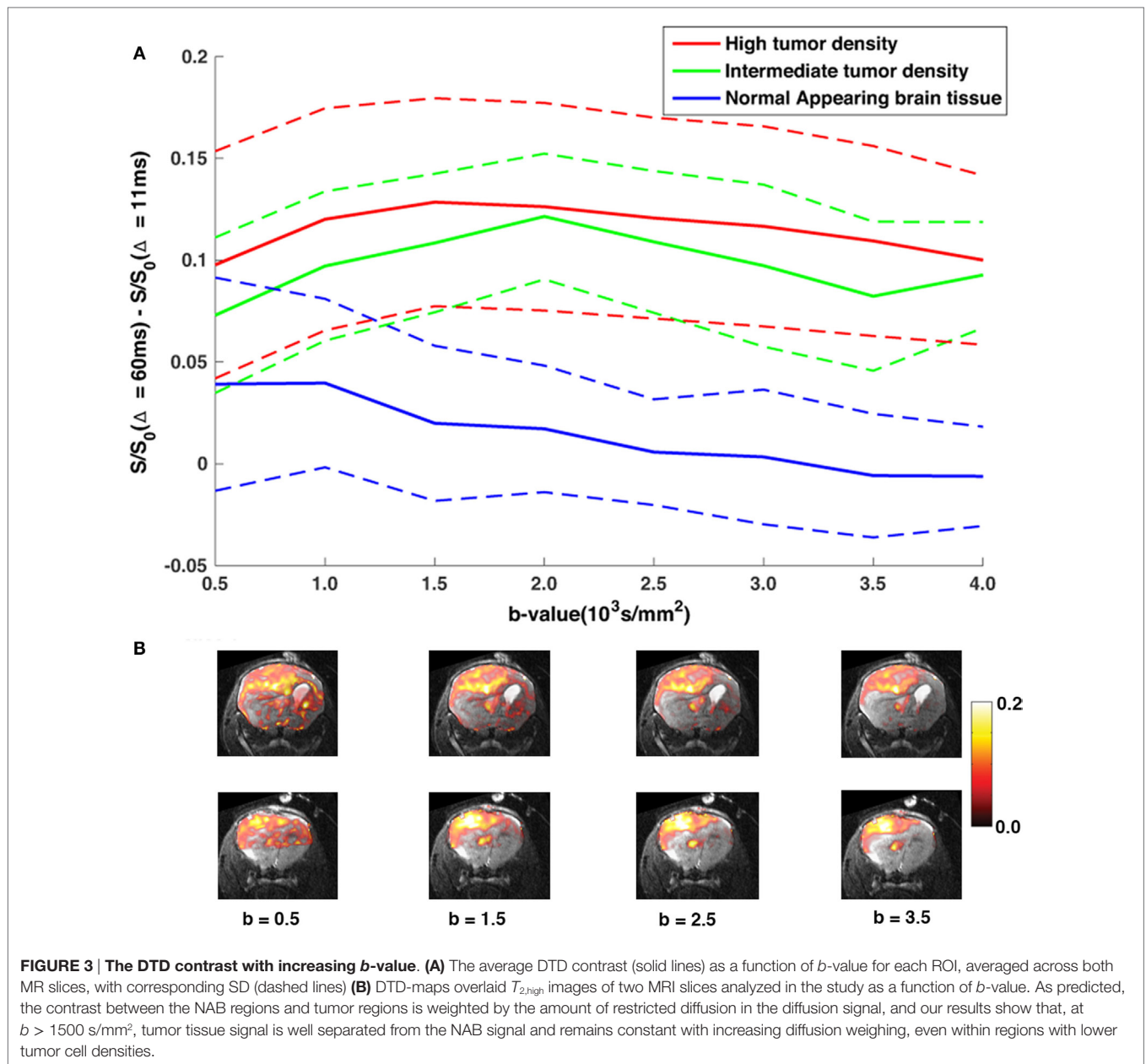
By studying the DW-signal of various diffusion times in a constant  $b$ -value experiment, we have shown that the slow diffusion component of the DW-signal is non-Gaussian, consistent with restricted diffusion of the intracellular space.

Multiple previous studies suggest that the restricted DW-signal is sensitive to tumor presence, and separation of the slow ADC from fast ADC improves tumor contrast-to-noise and reduces sensitivity to extracellular edema when compared to standard (extracellular) ADC DWI (31–34). Our current understanding of the basic underlying mechanism associated with the slow diffusion component is limited, and most previous studies, which investigate the biexponential signal behavior in tissue, model the DW-signal based on complex parameter fitting procedure and *a priori* assumptions (6, 16, 20, 21, 28–30, 40). The proposed method in the presented study, however, provides a simple technique for isolation of the restricted DW-signal component and serves as a complimentary and direct approach for separating the restricted from the hindered diffusion effects. Because the hindered and free DW-signals are weighted by Gaussian diffusion and thus independent of  $\Delta$ , subtraction of cb-data acquired at long and short  $\Delta$  compared to the squared compartment size ( $d^2$ ) isolates the DTD-dependent, non-Gaussian, restricted DW-signal component directly. The technique allows for quantification of DTD-restricted diffusion without a model and parameter fitting.

By applying the proposed method, we found that the tumor tissue signal was  $\Delta$ -dependent during the  $\Delta$ -interval chosen for our study and largely weighted by non-Gaussian diffusion. In contrast, signal from the NAB regions was measured with no  $\Delta$ -dependence and dominated by hindered, Gaussian diffusion

and non-DTD restricted diffusion. The observed DTD contrast within both tumor regions remained constant at  $b > 1500$  s/mm<sup>2</sup>, consistent with intracellular restriction. As the extracellular space of the intermediate tumor density tissue has large unrestricted regions similar to that of the normal brain tissue (Figure 1), yet, is characterized by a strong DTD contrast, it is reasonable to assume that the observed contrast arise from restricted water “filling up” the intracellular space during  $\Delta$  [as previously suggested (24)]. Following this assumption, the difference in tissue cell density between the tumor and the normal tissue regions may partly explain the prominent difference of  $\Delta$ -dependency on the DWI-signal within these regions, as a higher cell density yields an increased restricted signal contribution (more cell volume) to the overall DW-signal. In addition, as the  $\Delta$ -dependence is compartment size-dependent, the normal tissue regions may (this was not measured in our study) have a higher number of larger or smaller cellular compartments, which do not experience the gradual molecular “fill-up” of the intracellular space during  $\Delta$  compared to that of tumor tissue. These assumptions are also consistent with the histology, which showed a distribution of cell sizes within each region. Therefore, we argue that the reported reduced ADC in high-grade tumor tissue (2, 3, 41) may be a result of a heavier weighting on the restricted intracellular signal in these tumor regions compared to normal brain tissue regions due to both increased cell packing and tissue cell size. The biexponential modeling of the NAB data supports this claim, as we found evidence of a slow ADC component in these regions as well, but without the DTD contrast.

By investigating the signal curve of Figure 2, we may estimate an approximate cellular compartment size directly, as the elbow seen in plots Figures 2A,B imply that water molecules



start approaching the restricted fill-up regime at  $\Delta = 40$  ms. The minimum diffusion length scale of the tumor tissue should in this case be on the order of  $d^2 = 2 \cdot D_{intra} \cdot 40$  ms. If we now use the previously measured intracellular diffusivity  $D_{intra} \sim 1 \mu\text{m}^2/\text{ms}$  (16, 17), this approximates to  $d \sim 9 \mu\text{m}$ , which is comparable to the estimates found using the two-compartment model of  $d \sim 11 \mu\text{m}$  and within the distribution range of cell body size estimate on histology  $d \sim 3\text{--}12 \mu\text{m}$ . It is also in agreement with some previous estimates of the glioma cell size (16, 24). The importance of restricted diffusion on tumor detection, and the influence of intracellular ADC in cancer imaging, is supported by the results of the biexponential fit, where we were able to replicate reasonable diffusion and compartment size

values for both the intermediate and tumor tissue. The signal volume fraction was, however, slightly underestimated within the tumor regions compared to the approximated cell coverage of the histological regions. This discrepancy may be explained by a difference in T2-signal weighing of the intracellular and extracellular regions, which was not accounted for in our model (24). In addition, as the DTD is cell size-dependent, the signal fraction, estimated based on our model, may simply reflect the signal contribution from cells experiencing the molecular fill-up of the intracellular space rather than reflecting the true cell density of the region. An experiment including more and shorter  $\Delta$ -values may possibly have improved the output of the extended biexponential model.



**TABLE 1 | Results of the biexponential modeling of restricted and hindered DW-signal (Eqs 3 and 4).**

|  | High tumor density | Intermediate tumor density   | Normal-appearing brain tissue |
|--|--------------------|------------------------------|-------------------------------|
| $R$ ( $\mu\text{m}$ )                      | $5.2 \pm 0.2$      | $3.7\text{--}5.9 \pm 1.7$    | –                             |
| $F$  | $0.31 \pm 0.10$    | $0.20\text{--}0.35 \pm 0.10$ | $0.56 \pm 0.05$               |
| $\text{ADC}_i$ ( $\text{mm}^2/\text{ms}$ ) | 1                  | 1–1.4                        | $1.9 \pm 0.29$                |
| $\text{ADC}_r$ ( $\text{mm}^2/\text{ms}$ ) |                    |                              | $0.41 \pm 0.04$               |
| $\Delta = 11$ ms                           | $0.41 \pm 0.04$    | $0.26\text{--}0.30 \pm 0.06$ |                               |
| $\Delta = 20$ ms                           | $0.28 \pm 0.04$    | $0.15\text{--}0.18 \pm 0.05$ |                               |
| $\Delta = 40$ ms                           | $0.15 \pm 0.03$    | $0.08\text{--}0.09 \pm 0.02$ |                               |
| $\Delta = 60$ ms                           | $0.09 \pm 0.04$    | $0.05\text{--}0.09 \pm 0.04$ |                               |
| $\lambda$                                  | 1.73               | 1.73–1.46                    | $1.26 \pm 0.10$               |

Here, only tumor tissue signal was modeled using  $\Delta$ -dependent ADC, as NAB was only weakly influenced by the restricted diffusion and demonstrated no  $\Delta$ -dependence. A reduced biexponential model (Eq. 3) was used for modeling of the NAB signal.

Despite being largely attenuated at high  $b$ -values, the output from the modeling of the NAB signal attenuation suggests a significant contribution from a slow diffusion component from this region, which may add support to the assumption that the slow ADC is intracellular. The signal fraction in these estimates was, however, largely overestimated compared to the space fraction occupied by cells on the NAB-section of the histological images. Considering the low SNR at high  $b$ -values in these regions, the overestimation may simply be a consequence of a high noise level rather than reflecting the signal contribution of intracellular restricted diffusion.

The estimations using the proposed model for restricted diffusion were highly dependent on the chosen  $\lambda$ , with decreasing  $R$  with decreasing  $\lambda$ . This represents a limitation in the parameter estimations in the model.

Although the presented research is a simple and novel approach for studying the restricted DW-signal directly, and the focus in our work was to show that the slow ADC is non-Gaussian and a consequence of intracellular restriction, there are still a few limitations, which should be addressed. In the current empirical study, we were unable to measure restricted diffusion in the normal tissue, hence the proposed differences between the normal and tumor regions related to the DTD contrast remains hypothetical. Furthermore, the reproducibility of the fill-up phenomenon using other tumor types and validating the DTD effect in regions with higher degree of heterogeneity or within tumor tissue in an early stage of development is left unexplored in this study. Specifically, considering the observed difference in  $\Delta$ -dependence between normal and cancer tissues, extending the analysis of the DTD contrast to include a wider range of tumor tissue populations would be an interesting next step in order to test the applicability of the DTD contrast and its potential as biomarker of cancer. Changing the gradient amplitude/ $\Delta$  may create differences in eddy current artifacts across the volumes (42). These artifacts typically manifest as geometric distortions including shearing, shading, scaling, blurring, and spatial misregistration of the data. As the subtraction maps between the two did not display evident blurring or edge effects, which

would be expected as a result of misregistration and differences in shearing, we argue that differences in eddy current effects are small compared to the strong  $\Delta$ -effect and should not contribute significantly to the outcome of our study. This was, however, not tested specifically.

The present study was performed on a specialized high-performance animal MRI scanner. Utilizing short  $\Delta$  is not currently available on clinical scanners, however, clinical translation of the principle may still be achievable on next generation human clinical scanners with greater gradient performance (43).

## CONCLUSION

In this empirical study, we verify the assumption that the slow diffusion component of the DW-signal is non-Gaussian and dependent on  $\Delta$ , consistent with restricted diffusion of the intracellular space. The importance of restricted diffusion in tumor detection is consistent with our results.

## AUTHOR CONTRIBUTIONS

TH: contributed to conception, acquisition, analysis, and interpretation of data, drafting, and writing the article. NW: contributed to conception, acquisition, analysis, and interpretation of data and revising the article. JK: contributed to conception, acquisition, and analysis of data and participated in revising the article. YC: contributed to acquisition of data and participated in revising the article. GY: contributed to acquisition of data and participated in drafting and revising the article. HB: contributed to analysis of data and participated in revising the article. NS-A: contributed to acquisition of data and participated in revising the article. RR-P: contributed to conception, acquisition, analysis, and interpretation of data and revising the article. RB: contributed in acquisition of data and participated in revising the article. NN: contributed to acquisition of data and participated in revising the article. SK: contributed to interpretation of data and participated in revising the article. AB: contributed to conception, acquisition, and interpretation of data and participated in revising the article. AD: contributed to conception, acquisition, and interpretation of data and drafting and revising the article.

## ACKNOWLEDGMENTS

This material is based upon work supported by the National Science Foundation under Grant No. 1430082, with support from UCSD Moores Cancer Center Pathology Core, UCSD School of Medicine Microscopy Core, NINDS P30 core grant #NS047101 and UCSD Clinician Scientist Program (#5T32EB005970-07).

## SUPPLEMENTARY MATERIAL

The Supplementary Material for this article can be found online at <http://journal.frontiersin.org/article/10.3389/fonc.2016.00179>

## REFERENCES

- Stejskal E, Tanner J. Spin diffusion measurements: spin echoes in the presence of a time-dependent field gradient. *J Chem Phys* (1965) 42(1):288. doi:10.1063/1.1695690
- Guo AC, Cummings TJ, Dash RC, Provenzale JM. Lymphomas and high-grade astrocytomas: comparison of water diffusibility and histologic characteristics. *Radiology* (2002) 224(1):177–83. doi:10.1148/radiol.2241010637
- Sugahara T, Korogi Y, Kochi M, Ikushima I, Shigematu Y, Hirai T, et al. Usefulness of diffusion-weighted MRI with echo-planar technique in the evaluation of cellularity in gliomas. *J Magn Reson Imaging* (1999) 9(1):53–60. doi:10.1002/(SICI)1522-2586(199901)9:1<53::AID-JMRI7>3.0.CO;2-2
- Chenevert TL, Sundgren PC, Ross BD. Diffusion imaging: insight to cell status and cytoarchitecture. *Neuroimaging Clin N Am* (2006) 16(4):619–32. doi:10.1016/j.nic.2006.06.005
- Nicholson C. Factors governing diffusing molecular signals in brain extracellular space. *J Neural Transm* (2005) 112(1):29–44. doi:10.1007/s00702-004-0204-1
- Assaf Y, Cohen Y. Non-mono-exponential attenuation of water and n-acetyl aspartate signals due to diffusion in brain tissue. *J Magn Reson* (1998) 131(1):69–85. doi:10.1006/jmre.1997.1313
- Assaf Y, Freidlin RZ, Rohde GK, Basser PJ. New modeling and experimental framework to characterize hindered and restricted water diffusion in brain white matter. *Magn Res Med* (2004) 52(5):965–78. doi:10.1002/mrm.20274
- Clark CA, Le Bihan D. Water diffusion compartmentation and anisotropy at high b values in the human brain. *Magn Reson Med* (2000) 44(6):852–9. doi:10.1002/1522-2594(200012)44:6<852::AID-MRM5>3.0.CO;2-A
- Maier SE, Sun Y, Mulkern RV. Diffusion imaging of brain tumors. *NMR Biomed* (2010) 23(7):849–64. doi:10.1002/nbm.1544
- Mulkern RV, Gudbjartsson H, Westin C-F, Zengingonul HP, Gartner W, Guttmann CR, et al. Multi-component apparent diffusion coefficients in human brain. *NMR Biomed* (1999) 12:51–62. doi:10.1002/(SICI)1099-1492(199902)12:1<51::AID-NBM546>3.0.CO;2-E
- Einstein A. Über die von der molekularkinetischen Theorie der Wärme geforderte Bewegung von in ruhenden Flüssigkeiten suspendierten Teilchen. *Ann Phys* (1905) 322(8):549–60. doi:10.1002/andp.19053220806
- Chen KC, Nicholson C. Changes in brain cell shape create residual extracellular space volume and explain tortuosity behavior during osmotic challenge. *PNAS* (2000) 97(15):8306–11. doi:10.1073/pnas.150338197
- Le Bihan D. Molecular diffusion, tissue microdynamics and microstructure. *NMR Biomed* (1995) 8(7–8):375–86. doi:10.1002/nbm.1940080711
- Syková E, Nicholson C. Diffusion in brain extracellular space. *Physiol Rev* (2008) 88(4):1277–340. doi:10.1152/physrev.00027.2007
- Tao L, Nicholson C. Maximum geometrical hindrance to diffusion in brain extracellular space surrounding uniformly spaced convex cells. *J Theor Biol* (2004) 229(1):59–68. doi:10.1016/j.jtbi.2004.03.003
- Pfeuffer J, Flögel U, Dreher W, Leibfritz D. Restricted diffusion and exchange of intracellular water: theoretical modelling and diffusion time dependence of <sup>1</sup>H NMR measurements on perfused glial cells. *NMR Biomed* (1998) 11(1):19–31. doi:10.1002/(SICI)1099-1492(199802)11:1<19::AID-NBM499>3.0.CO;2-O
- Stanisz GJ, Wright GA, Henkelman RM, Szafer A. An analytical model of restricted diffusion in bovine optic nerve. *Magn Reson Med* (1997) 37(1):103–11. doi:10.1002/mrm.1910370115
- Le Bihan D. Looking into the functional architecture of the brain with diffusion MRI. *Nat Rev Neurosci* (2003) 4(6):469–80. doi:10.1038/nrn1119
- Sukstanskii AL, Yablonskiy DA. Effects of restricted diffusion on MR signal formation. *J Magn Reson* (2002) 157(1):92–105. doi:10.1006/jmre.2002.2582
- Balinov B, Jonsson B, Linse P, Soderman O. The NMR self-diffusion method applied to restricted diffusion. Simulation of echo attenuation from molecules in spheres and between planes. *J Magn Reson A* (1993) 104(1):17–25. doi:10.1006/jmra.1993.1184
- Shemesh N, Özarslan E, Bar-Shir A, Basser PJ, Cohen Y. Observation of restricted diffusion in the presence of a free diffusion compartment: single- and double-PFG experiments. *J Magn Reson* (2009) 200(2):214–25. doi:10.1016/j.jmr.2009.07.005
- White NS, McDonald CR, Farid N, Kuperman J, Karow D, Schenker-Ahmed NM, et al. Diffusion-weighted imaging in cancer: physical foundations and applications of restriction spectrum imaging. *Cancer Res* (2014) 74(17):4638–52. doi:10.1158/0008-5472.CAN-13-3534
- Stanisz GJ. Diffusion MR in biological systems: tissue compartments and exchange. *Isr J Chem* (2003) 43(1–2):33–44. doi:10.1560/E0WU-7FFH-31M6-VLYT
- White NS, Dale AM. Distinct effects of nuclear volume fraction and cell diameter on high b-value diffusion MRI contrast in tumors. *Magn Reson Med* (2014) 72(5):1435–43. doi:10.1002/mrm.25039
- Schachter M, Does MD, Anderson AW, Gore JC. Measurements of restricted diffusion using an oscillating gradient spin-echo sequence. *J Magn Reson* (2000) 147(2):232–7. doi:10.1006/jmre.2000.2203
- Does MD, Parsons EC, Gore JC. Oscillating gradient measurements of water diffusion in normal and globally ischemic rat brain. *Magn Reson Med* (2003) 49(2):206–15. doi:10.1002/mrm.10385
- Nilsson M, van Westen D, Ståhlberg F, Sundgren PC, Lätt J. The role of tissue microstructure and water exchange in biophysical modelling of diffusion in white matter. *Magn Reson Mater Phys Biol Med* (2013) 26(4):345–70. doi:10.1007/s10334-013-0371-x
- Panagiotaki E, Walker-Samuel S, Siow B, Johnson SP, Rajkumar V, Pedley RB, et al. Noninvasive quantification of solid tumor microstructure using VERDICT MRI. *Cancer Res* (2014) 74(7):1902–12. doi:10.1158/0008-5472.CAN-13-2511
- Price WS, Barzykin AV, Hayamizu K, Tachiyama M. A model for diffusive transport through a spherical interface probed by pulsed-field gradient NMR. *Biophys J* (1998) 74(5):2259–71. doi:10.1016/S0006-3495(98)77935-4
- Zhao L, Sukstanskii A, Kroenke C, Song J, Piwnicka-Worms D, Ackerman J, et al. Intracellular water specific MR of microbead-adherent cells: hela cell intracellular water diffusion. *Magn Reson Med* (2008) 59(1):79–84. doi:10.1002/mrm.21440
- Kang Y, Choi SH, Kim Y-J, Kim KG, Sohn C-H, Kim J-H, et al. Gliomas: histogram analysis of apparent diffusion coefficient maps with standard- or high-b-value diffusion-weighted MR imaging – correlation with tumor grade. *Radiology* (2011) 261(3):882–90. doi:10.1148/radiol.11110686
- Doskalyev A, Yamasaki F, Ohtaki M, Kajiwara Y, Takeshima Y, Watanabe Y, et al. Lymphomas and glioblastomas: differences in the apparent diffusion coefficient evaluated with high b-value diffusion-weighted magnetic resonance imaging at 3T. *Eur J Radiol* (2012) 81(2):339–44. doi:10.1016/j.ejrad.2010.11.005
- Seo HS, Chang K-H, Na DG, Kwon BJ, Lee DH. High b-value diffusion (b = 3000 s/mm<sup>2</sup>) MR imaging in cerebral gliomas at 3T: visual and quantitative comparisons with b = 1000 s/mm<sup>2</sup>. *Am J Neuroradiol* (2008) 29(3):458–63. doi:10.3174/ajnr.A0842
- García Santos JM, Ordóñez C, Torres del Río S. ADC measurements at low and high b values: insight into normal brain structure with clinical DWI. *Magn Reson Imaging* (2008) 26(1):35–44. doi:10.1016/j.mri.2007.04.004
- White NS, McDonald CR, Farid N, Kuperman JM, Kesari S, Dale AM. Improved conspicuity and delineation of high-grade primary and metastatic brain tumors using “restriction spectrum imaging”: quantitative comparison with high B-value DWI and ADC. *AJNR Am J Neuroradiol* (2012) 34(5):958–64. doi:10.3174/ajnr.A3327
- Mukthavaram R, Jiang P, Saklecha R, Simberg D, Bharati IS, Nomura N, et al. High-efficiency liposomal encapsulation of a tyrosine kinase inhibitor leads to improved in vivo toxicity and tumor response profile. *Int J Nanomedicine* (2013) 8:3991–4006. doi:10.2147/IJN.S51949
- Wong K, Young GS, Makale M, Hu X, Yildirim N, Cui K, et al. Characterization of a human tumorsphere glioma orthotopic model using magnetic resonance imaging. *J Neurooncol* (2011) 104(2):473–81. doi:10.1007/s11060-010-0517-x
- Holland D, Kuperman JM, Dale AM. Efficient correction of inhomogeneous static magnetic field-induced distortion in echo planar imaging. *Neuroimage* (2010) 50(1):175–83. doi:10.1016/j.neuroimage.2009.11.044
- Helmbold P, Lahtz C, Herpel E, Schnabel PA, Dammann RH. Frequent hypermethylation of RASSF1A tumour suppressor gene promoter and presence of Merkel cell polyomavirus in small cell lung cancer. *Eur J Cancer* (2009) 45(12):2207–11. doi:10.1016/j.ejca.2009.04.038

40. Bar-Shir A, Cohen Y. High b-value q-space diffusion MRS of nerves: structural information and comparison with histological evidence. *NMR Biomed* (2008) 21(2):165–74. doi:10.1002/nbm.1175
41. Kono K, Inoue Y, Nakayama K, Shakudo M, Morino M, Ohata K, et al. The role of diffusion-weighted imaging in patients with brain tumors. *Am J Neuroradiol* (2001) 22(6):1081–8.
42. Chan RW, von Deuster C, Giese D, Stoeck CT, Harmer J, Aitken AP, et al. Characterization and correction of eddy-current artifacts in unipolar and bipolar diffusion sequences using magnetic field monitoring. *J Magn Reson* (2014) 244:74–84. doi:10.1016/j.jmr.2014.04.018
43. McNab JA, Edlow BL, Witzel T, Huang SY, Bhat H, Heberlein K, et al. The human connectome project and beyond: initial applications of 300mT/m gradients. *Neuroimage* (2013) 80(0):234–45. doi:10.1016/j.neuroimage.2013.05.074

**Conflict of Interest Statement:** The authors declare that the research was conducted in the absence of any commercial or financial relationships that could be construed as a potential conflict of interest.

The reviewer SK and handling editor declared their shared affiliation, and the handling editor states that the process nevertheless met the standards of a fair and objective review.

*Copyright © 2016 Hope, White, Kuperman, Chao, Yamin, Bartch, Schenker-Ahmed, Rakow-Penner, Bussell, Nomura, Kesari, Bjørnerud and Dale. This is an open-access article distributed under the terms of the Creative Commons Attribution License (CC BY). The use, distribution or reproduction in other forums is permitted, provided the original author(s) or licensor are credited and that the original publication in this journal is cited, in accordance with accepted academic practice. No use, distribution or reproduction is permitted which does not comply with these terms.*