

UC Davis

UC Davis Previously Published Works

Title

Type 2 diabetes patients have accelerated cartilage matrix degeneration compared to diabetes free controls: data from the Osteoarthritis Initiative

Permalink

<https://escholarship.org/uc/item/6vn9t38h>

Journal

Osteoarthritis and Cartilage, 26(6)

ISSN

1063-4584

Authors

Neumann, J
Hofmann, FC
Heilmeyer, U
et al.

Publication Date

2018-06-01

DOI

10.1016/j.joca.2018.03.010

Peer reviewed

Osteoarthritis and Cartilage



Associations between molecular biomarkers and MR-based cartilage composition and knee joint morphology: data from the Osteoarthritis Initiative

G.B. Joseph ^{†*}, M.C. Nevitt [‡], C.E. McCulloch [‡], J. Neumann [†], J.A. Lynch [‡], U. Heilmeier [†], N.E. Lane [§], T.M. Link [†]

[†] Department of Radiology and Biomedical Imaging, University of California, San Francisco, USA

[‡] Department of Epidemiology and Biostatistics, University of California, San Francisco, USA

[§] Department of Rheumatology, University of California, Davis, USA

ARTICLE INFO

Article history:

Received 15 November 2017

Accepted 13 April 2018

Keywords:

Osteoarthritis

MRI T2

Cartilage

Molecular biomarkers

SUMMARY

Objective: The purpose of this study was to assess the associations between serum/urine biomarkers for osteoarthritis and magnetic resonance (MR) imaging measures of cartilage composition and joint structure (cartilage, meniscus, and bone marrow), using MR imaging data from the Osteoarthritis Initiative (OAI).

Design: 141 subjects with Kellgren Lawrence (KL) grades 0–3 in the right knee and with available serum/urine biomarker assays were selected from the OAI. Cartilage magnetic resonance imaging (MRI) T2 measurements were performed in the medial femur, lateral femur, medial tibia, lateral tibia, and patella compartments. Compartment-specific knee morphologic grading [whole-organ magnetic resonance imaging score (WORMS)] in the cartilage, meniscus, and bone marrow was also performed. We focused on associations of serum hyaluronan (sHA), serum cartilage oligomeric matrix protein (sCOMP), serum matrix metalloproteinase-3 (sMMP3), and Urine Carboxy-Terminal Telepeptides of Type II Collagen (uCTX-II) with MRI parameters (T2, WORMS), assessed using partial correlations adjusted for age, gender, body mass index (BMI), KL grade in both knees, and diabetes status.

Results: Higher levels of sHA, sMMP3 and sCOMP were correlated ($P < 0.05$) with T2 of the lateral femur ($r = 0.18$ to 0.32) and lateral tibia ($r = 0.17$ to 0.23), and with average T2 of all knee regions ($r = 0.23$). uCTXII was correlated with patellar T2 ($r = 0.19$, $P = 0.04$). Among the morphologic measures, sHA and sMMP3 was positively correlated ($r = 0.17$ to 0.21 , $P < 0.05$) with meniscal damage.

Conclusions: This study suggests weak, but statistically significant, correlations between serum biomarkers of OA (sHA, sCOMP, and sMMP3) and MRI T2 measures of cartilage extra-cellular matrix degeneration.

© 2018 Osteoarthritis Research Society International. Published by Elsevier Ltd. All rights reserved.

Introduction

Osteoarthritis (OA) is a heterogeneous joint disease that affects approximately 250 million people¹, causes severe disability², and often leads to total knee replacement (TKR). The rising rates of TKR³

highlight a need to develop biomarkers that can detect early stages of joint degeneration. Ideally, such biomarkers would identify high-risk subjects that would most benefit from therapeutic intervention, such as lifestyle modification.

Biochemical serum and urine markers of OA are molecules that are released into serum/urine reflecting cartilage or bone turnover and the repair and regeneration processes that occur in joint tissue⁴. These markers are associated with radiographic OA changes, particularly the late stages of disease; Vilim *et al.* reported that serum cartilage oligomeric matrix protein (sCOMP) is associated with radiographic progression of OA⁵, urine Carboxy-Terminal Telepeptides of Type II Collagen (uCTX-II) is associated with

* Address correspondence and reprint requests to: G.B. Joseph, Department of Radiology and Biomedical Imaging, University of California, San Francisco, 185 Berry St, Suite 350, San Francisco, CA 94158, USA. Fax: 1-415-476-0616.

E-mail addresses: gabby.joseph@ucsf.edu (G.B. Joseph), mnevitt@psg.ucsf.edu (M.C. Nevitt), Charles.McCulloch@ucsf.edu (C.E. McCulloch), Jan.Neumann@ucsf.edu (J. Neumann), jlynch@psg.ucsf.edu (J.A. Lynch), Ursula.Heilmeier@ucsf.edu (U. Heilmeier), nelane@ucdavis.edu (N.E. Lane), Thomas.Link@ucsf.edu (T.M. Link).

progression in joint space narrowing (JSN)⁶ and serum hyaluronan (sHA) is associated with incidence of knee JSN⁷. However, few have studied the relationships of OA serum/urine markers with magnetic resonance (MR) imaging markers of knee cartilage composition and morphologic knee damage which are not seen on standard radiographs⁸.

Degenerative cartilage compositional change in OA can be quantified using magnetic resonance imaging (MRI) T2 mapping, that identifies abnormalities of the cartilage extracellular matrix including collagen fiber orientation⁹. MRI T2 probes early stages of cartilage degeneration, which are not seen on standard MRI, occurring prior to macroscopic cartilage defects and thinning. Understanding the links between systemic markers of knee joint tissue degeneration/repair (expressed in serum/urine and imaging measures of cartilage composition) would provide new insights into the role of systemic biomarkers in assessing joint degeneration at early disease stages. Thus, serum/urine biomarkers could potentially provide information on the risk for developing OA at a pre-clinical stage.

The purpose of this study was therefore to assess the associations between serum/urine biomarkers for osteoarthritis and MR imaging measures of cartilage composition and joint structure (cartilage, meniscus, and bone marrow), using data from the Osteoarthritis Initiative (OAI).

Methods

Subject selection

This study utilizes data from the Osteoarthritis Initiative (OAI; <http://www.oai.ucsf.edu/>)¹⁰, a multi-center, longitudinal study of persons aged 45–79 years at enrollment, aimed at assessing biomarkers in OA including those derived from MR imaging. The OAI dataset includes both MRI and radiographic images of subjects scanned over 8 years. This database can be used to evaluate MRI biomarkers for the development and progression of OA. The study protocol, amendments, and informed consent documentation were reviewed and approved by the local institutional review boards of all participating centers.

Subjects in this study are a subset of those included in the FNIH Osteoarthritis Research Society International (OARSI) Biomarkers Consortium study, a nested case–control study within the OAI of 600 knees (one knee per subject) with structural and/or symptom progression over 4 years and knees that did not progress. Details of the study design are available¹¹. Subjects in that study had serum and urine OA biomarkers assessed at baseline, 12 and 24 months. For the present study, we analyzed a convenience sample of these subjects by selecting all subjects that had a Kellgren Lawrence score (KL) ≤ 3 in a right knee from which we had previously obtained both T2 and joint morphology measures from the OAI MR images for other analyses^{12–16}. The OAI exclusion criteria was: (1) inflammatory arthropathies (including rheumatoid arthritis and seronegative spondylarthropathies), (2) MRI contraindications, (3) use of ambulatory aids and co-morbid conditions that may affect the ability to participate in the study. For this analysis we further excluded knees with (1) knee injury with deformity of the knee joint, (2) total joint replacements at the lower extremities, (3) MRI evidence of fractures or abnormalities, that do not fit into the spectrum of OA and may indicate other severe disease, such as tumor or inflammation.

Serum and urine biomarkers

Morning blood and second morning void urine specimens were collected after an overnight fast using a uniform protocol at

baseline, 12 month and 24 month clinic visits. Additional details on specimen collection and processing methods can be found in the OAI operations manuals (<http://www.oai.ucsf.edu/datarelease/OperationsManuals.asp>). Among the eighteen serum and urine biomarkers available from the Biomarkers Consortium study, we focused on four based on previous research studies and recommendations from a consensus document from the OARSI US FDA initiative¹⁷. These were: sCOMP, sHA, serum matrix metalloproteinase-3 (sMMP3), and uCTXII^{7,17–21}. We performed exploratory analyses of the remaining biomarkers: serum type IIA procollagen amino terminal propeptide (sPIIANP), serum CTXI (sCTXI), Serum chondroitin sulfate 846 epitope (sCS846), Serum Collagen Type II Cleavage (sC2C), Serum C1,2C (sC12c), Serum C-propeptide of type II collagen (sCPII), Serum N-telopeptide of type I collagen (sNTXI), Serum Coll2 1 NO2 (sColl21NO2), urine NTXI (uNTXI), urine C1,2C (uC12C), and urine Coll2 1 NO2 (uColl21NO2)¹⁷. The primary and exploratory predictors are summarized in Table I.

All biomarker assays were performed by LabCorp ClinicalTrials, a Clinical Laboratory Improvement Amendments (CLIA) and College of American Pathologists (CAP) certified division within LabCorp, with the exception of urine Col2-1 NO2, which was measured by Artialis, a Good Laboratory Practice-certified facility. All assays were run blinded to the clinical information. Complete details have been published^{22,23}.

MR imaging

MR images were obtained using four identical 3.0 Tesla (Siemens Magnetom Trio, Erlangen, Germany) scanners in Columbus, Ohio; Baltimore, Maryland; Pittsburgh, Pennsylvania; Pawtucket, Rhode Island. The following sequences were acquired: sagittal 2D intermediate-weighted fast spin-echo sequence (repetition time (TR)/echo time (TE) = 3200/30 ms, spatial resolution = 0.357 mm \times 0.511 mm, slice thickness = 3.0 mm),

Table I
Serum and urine biomarkers analyzed in this study

Biomarkers	Manufacturer	Biological process ²²
Primary predictors		
Serum COMP (sCOMP)	Biovendor	Cartilage degradation
Serum hyaluronan (sHA)	Corgenix	Osteophyte burden, synovitis
Serum MMP-3 (sMMP3)	Invitrogen	Total (active and inactive) metalloprotease involved with joint tissue degradation
Urine CTXII (uCTXII)	Biovendor	Type II collagen degradation
Exploratory predictors		
Serum PIIANP (sPIIANP)	Merck Group/ Millipore	Type II collagen synthesis
Serum CTXI (sCTXI)	IDS	Bone resorption
Serum CS846 (sCS846)	IBEX	Cartilage aggrecan synthesis/turnover
Serum C2C (sC2C)	IBEX	Type II collagen degradation
Serum CPII (sCPII)	IBEX	Type II collagen synthesis
Serum/Urine NTXI (sNTXI/uNTXI)	ALERE –Osteomark	Bone resorption
Serum/Urine Coll2 1 NO2 (sColl21NO2/uColl21NO2)	Artialis	Type II collagen degradation and inflammation
Serum/Urine C1,2C (sC12C/uC12C)	IBEX	Types I and II collagen degradation

All biomarker assays were performed by LabCorp Clinical Trials, a Clinical Laboratory Improvement Amendments (CLIA) and College of American Pathologists (CAP) certified division within LabCorp, with the exception of urine Col2-1 NO2, which was measured by Artialis, a Good Laboratory Practice-certified facility.

coronal 2D proton density fast spin-echo sequence (TR/TE = 3700/29 ms, spatial resolution = 0.365 mm × 0.456 mm, slice thickness = 3.0 mm), and sagittal 3D dual-echo in steady state sequence (TR/TE = 16.3/4.7 ms, spatial resolution = 0.365 mm × 0.456 mm, slice thickness = 0.7 mm). A sagittal 2D multi-slice multi-echo sequence (MSME, TR = 2700 ms, TE₁–TE₇ = 10–70ms, spatial resolution = 0.313 mm × 0.446 mm, slice thickness = 3.0 mm, and 0.5 mm gap) was used for cartilage T2 measurements¹⁰.

Image analysis

X-Ray based KL grade and joint space narrowing

Fixed-flexion knee radiographs were obtained at baseline, and radiographic KL grades²⁴ were provided in the OAI dataset. Subjects with baseline KL grades of 0–3 were selected. JSN scores at baseline and 2 years were provided in the OAI dataset. JSN progression (in the right or left knee, individually) was defined as positive if a knee had a ≥ 1 OARSI grade increase in JSN score (medial or lateral) between baseline and 2 years.

WORMS scoring

MR images of the right knee obtained at the baseline visit were reviewed on picture archiving communication system (PACS) workstations (Agfa, Ridgefield Park, NJ, USA). Three radiologists with 7-, 5- and 5-years of experience graded cartilage lesions. In equivocal cases, a consensus reading was performed with a musculoskeletal radiologist with 24-years of experience. Baseline cartilage and bone marrow lesions were assessed in six regions (patella, trochlea, medial femur, medial tibia, lateral femur and lateral tibia) using a modified semi-quantitative whole-organ magnetic resonance imaging score (WORMS)²⁵. The highest score of any lesion was recorded for each region.

Subchondral bone marrow edema pattern was defined as poorly marginated areas of increased T2 signal intensity and graded using a modified 4-point WORMS scale (0, none; 1, diameter 0–5 mm; 2, 5–20 mm; 3, >20 mm)²⁶. Meniscal lesions were graded separately in 6 regions (medial/lateral and anterior/body/posterior) using the following 4-point scale: 0-normal; 1-intrasubstance signal; 2-non-displaced tear; 3-displaced or complex tear; 4-complete destruction/maceration.

The maximum (MAX) cartilage, meniscus or bone marrow edema (BME) score was defined as the maximum score in any region. The summation (SUM) cartilage, meniscus or BME score was defined as the summation of WORMS scores in all regions. The reproducibility results for WORMS reading have been previously published^{27,28}: the intra-observer reproducibility in all tissues (meniscus, cartilage, bone marrow) was $\geq 96\%$, while the inter-observer reproducibility was $\geq 97\%$.

T2 measurements

Semi-automatic cartilage segmentation of lateral/medial femur, lateral/medial tibia, and patella regions was performed as previously described, using an in-house, spline-based software based on MATLAB (MathWorks, Natick, Massachusetts)²⁸. Trained investigators segmented the entire cartilage but used rigorous criteria to exclude sections with compromised image quality.

Validated methods for obtaining T2 maps of cartilage have been published^{27,28}. T2 maps were computed from the MSME images on a pixel-by-pixel basis using 6 echoes (TE = 20–70ms) and 3 parameter fittings accounting for noise^{29,30}, and averaged over all of the slices in each cartilage region. The first echo (TE = 10 ms) was not included in the T2 fitting procedure in order to reduce potential errors resulting from stimulated echoes, and a noise-corrected

algorithm was implemented^{29,30}. The cartilage T2 reproducibility results have been described previously^{27,28}. The mean T2 values had root mean square (RMS) coefficients of variation (CV) ranging from 0.83% in the medial femur to 3.21% in the patella for intra-reader reproducibility, and from 1.22% in the patella to 1.86% in the lateral tibia for inter-reader reproducibility.

Statistical analysis

Statistical analysis was performed using STATA version 14 software (StataCorp LP, College Station, TX). Due to large between-subject variations³¹, the dynamic nature of the serum markers due to nonlinear or phasic progression²², and large variations of serum markers over time³¹, we averaged the values of the serum and urine biomarkers, respectively, over the three measured timepoints (baseline, 12 and 24 months). For the cross-sectional analysis, partial correlations adjusted for age, gender, body mass index (BMI), KL grade in both knees, diabetes status were used to evaluate the associations between serum/urine biomarkers and the following outcome variables: cartilage T2, cartilage, meniscus, and bone marrow lesion WORMS scores. The associations between biomarkers and both KL grade and Western Ontario and McMaster Universities Osteoarthritis Index (WOMAC) pain scores were assessed using partial correlations adjusted for adjusted for age, gender, and BMI. All the assumptions for partial correlation analysis were fulfilled.

We also performed longitudinal analyses of biochemical measures from baseline, 12 months and 24 months, using linear mixed effects models accounting for multiple measurements per subject. We assessed whether annual rates of change in biomarkers differed by baseline measures of (1) presence of a partial thickness cartilage defects (WORMS 0/1 vs WORMS ≥ 2) and (2) presence of a meniscus tear (WORMS 0/1 vs WORMS ≥ 2), and (3) average cartilage T2 subdivided by tertiles, by including an interaction between timepoint and each respective subgroup. The mixed models were adjusted for age, gender, BMI, KL grade in both knees, and diabetes status.

Results

Subject characteristics

The 141 participants in this study had a mean age of 59.7 ± 8.3 years and a mean BMI of 29.9 ± 4.5 kg/m² at baseline. Sixty-six percent of the subjects were female, and a majority of the subjects had KL2 ($n = 66$, 46.8%), while 9.2% ($n = 13$) had KL0, 14.9% ($n = 21$) had KL1, and 29.1% ($n = 41$) had KL3 in the right knee. Twelve subjects (8.5%) had JSN in the left knee over 2 years, while fifteen subjects (10.6%) had JSN in the right knee over 2 years (Table II).

No significant associations were found between the primary biomarkers (sHA, sCOMP, sMMP3, uCTXII) and KL grade or WOMAC pain score (adjusted for age, gender, and BMI, Supplementary Table 1) at baseline. No significant associations were found between blood biomarkers and development of JSN in the right knee over 2 years ($n = 15$, 10.6% of subjects): uCTXII (OR = 1.17; $P = 0.61$, 95% CI: 0.74–1.65), sMMP3 (OR = 1.03, $P = 0.26$, 95% CI: 0.97–1.11), sCOMP (OR = 1.01, $P = 0.71$, 95% CI: 0.99–1.02), and sHA (OR = 1.01 $P = 0.11$, 95% CI: 0.99–1.04).

Cartilage MRI T2

Serum biomarkers sHA, sCOMP, and sMMP3 were positively correlated with cartilage T2 values (Table III). For sHA, significant associations were found with T2 averaged over all cartilage compartments ($r = 0.23$, $P = 0.01$, 95% CI: 0.06–0.41), lateral femur T2 ($r = 0.32$, $P = 0.001$, 95% CI: 0.16–0.50) and lateral tibia T2 ($r = 0.20$,

Table II
Participant characteristics

	All participants
n	141
Age (years)	59.7 ± 8.3
BMI (kg/m ²)	29.9 ± 4.5
Gender (female)	93 (65.9%)
WOMAC pain	2.6 ± 3.3
Family history of knee replacement	27 (19.4%)
Subjects with type 2 diabetes	12 (8.7%)
Right knee KL	
0	13 (9.2%)
1	21 (14.9%)
2	66 (46.8%)
3	41 (29.1%)
Left knee KL	
0	20 (14.2%)
1	25 (17.7%)
2	55 (39.0%)
3	37 (26.2%)
4	4 (2.8%)
Right knee JSN over 2 years	15 (10.6%)
Left knee JSN over 2 years	12 (8.5%)

$P = 0.01$, 95% CI: 0.03–0.37), **Table III** and **Fig. 1**. sCOMP showed positive associations with cartilage T2 in the lateral femur ($r = 0.18$, $P = 0.03$, 95% CI: 0.01–0.35) and the lateral tibia ($r = 0.17$, $P = 0.04$, 95% CI: 0.00–0.34). sMMP3 showed positive associations with cartilage T2 in the average of all compartments ($r = 0.23$, $P = 0.006$, 95% CI: 0.06–0.41), the lateral femur ($r = 0.18$, $P = 0.03$, 95% CI: 0.01–0.35), and the lateral tibia ($r = 0.23$, $P = 0.01$, 95% CI: 0.06–0.41), **Fig. 2**. uCTXII was positively associated with cartilage T2 in the patella ($r = 0.19$, $P = 0.04$, 95% CI: 0.02–0.36). Many significant associations were found between the exploratory predictors and serum/urine biomarkers, especially Coll21NO2 (**Supplementary Table 3**).

Table III

Partial correlations between the primary serum and urine biomarkers and Cartilage T2, cartilage WORMS scores, and Meniscus WORMS scores (adjusted for age, gender, BMI, diabetes status, and Kellgren Lawrence (KL) grade in both knee sides) with P values and 95% confidence intervals (CI). Bold represents $P < 0.05$

Parameter	sHA		sCOMP		sMMP3		uCTXII	
	Corr.	P value (95% CI)	Corr.	P value (95% CI)	Corr.	P value (95% CI)	Corr.	P value (95% CI)
Cartilage T2								
Ave	0.23	0.01 (0.06 0.41)	0.14	0.08 (–0.03 0.31)	0.23	0.006 (0.06 0.41)	0.13	0.14 (–0.04 0.30)
LFC	0.32	0.001 (0.16 0.50)	0.18	0.03 (0.01 0.35)	0.18	0.03 (0.01 0.35)	0.04	0.69 (–0.13 0.21)
LT	0.20	0.01 (0.03 0.37)	0.17	0.04 (0.00 0.34)	0.23	0.01 (0.06 0.41)	0.16	0.06 (–0.01 0.33)
MFC	0.16	0.07 (–0.01 0.33)	0.01	0.86 (–0.16 0.18)	0.12	0.15 (–0.05 0.29)	0.09	0.27 (–0.08 0.26)
MT	0.09	0.30 (–0.08 0.26)	0.06	0.47 (–0.11 0.23)	0.15	0.07 (–0.02 0.32)	–0.01	0.89 (–0.18–0.16)
PAT	0.13	0.13 (–0.04 0.30)	0.02	0.81 (–0.15 0.19)	0.13	0.15 (–0.04 0.30)	0.19	0.04 (0.02 0.36)
Cartilage WORMS								
SUM	0.07	0.41 (–0.10 0.24)	–0.04	0.61 (–0.21 0.13)	–0.01	0.87 (–0.18 0.16)	0.09	0.27 (–0.08 0.26)
MAX	0.12	0.14 (–0.05 0.29)	0.01	0.86 (–0.16 0.18)	–0.02	0.80 (–0.19 0.15)	0.07	0.41 (–0.10 0.24)
LFC	0.05	0.51 (–0.12 0.22)	0.06	0.46 (–0.11 0.23)	–0.05	0.50 (–0.22 0.12)	0.14	0.11 (–0.03 0.31)
LT	0.13	0.11 (–0.04 0.30)	0.07	0.44 (–0.10 0.24)	–0.01	0.93 (–0.18 0.16)	0.13	0.12 (–0.04 0.30)
MFC	0.06	0.49 (–0.11 0.23)	0.01	0.96 (–0.16 0.18)	0.03	0.69 (–0.14 0.20)	0.03	0.65 (–0.14 0.20)
MT	–0.02	0.77 (–0.19 0.15)	–0.08	0.35 (–0.25 0.09)	0.07	0.36 (–0.10 0.24)	–0.09	0.27 (0.26 0.08)
PAT	0.01	0.88 (–0.16 0.18)	–0.08	0.33 (–0.25 0.09)	–0.07	0.40 (–0.24 0.10)	0.08	0.36 (–0.25 0.09)
TRO	0.05	0.54 (–0.12 0.22)	0.01	0.87 (–0.16 0.18)	–0.10	0.25 (–0.27 0.07)	0.13	0.16 (–0.04 0.30)
Meniscus WORMS								
SUM	0.12	0.16 (–0.05 0.29)	–0.11	0.21 (–0.28 0.06)	0.15	0.07 (–0.02 0.32)	–0.09	0.28 (–0.26 0.08)
MAX	0.17	0.05 (0.00 0.34)	–0.13	0.13 (–0.30 0.04)	0.19	0.02 (0.02 0.36)	–0.12	0.19 (–0.29 0.05)
Medial anterior	–0.11	0.20 (–0.28 0.06)	–0.10	0.24 (–0.27 0.07)	–0.11	0.20 (–0.28 0.06)	–0.09	0.26 (–0.26 0.08)
Medial body	0.19	0.02 (0.02 0.36)	–0.03	0.69 (–0.20 0.14)	0.21	0.01 (0.04 0.38)	–0.09	0.33 (–0.26 0.08)
Medial posterior	0.09	0.28 (–0.08 0.26)	–0.07	0.38 (–0.24 0.10)	0.07	0.39 (–0.10 0.24)	–0.07	0.38 (–0.24 0.10)
Lateral anterior	–0.05	0.57 (–0.22 0.12)	0.02	0.75 (–0.15 0.19)	0.18	0.04 (0.01 0.35)	–0.06	0.50 (–0.23 0.11)
Lateral body	0.13	0.13 (–0.04 0.30)	–0.10	0.22 (–0.27 0.07)	0.19	0.02 (0.02 0.36)	0.02	0.85 (–0.15 0.19)
Lateral posterior	0.02	0.74 (–0.15 0.19)	–0.08	0.35 (–0.25 0.09)	–0.06	0.44 (–0.23 0.11)	–0.02	0.81 (–0.19 0.15)

Abbreviations: Corr. (partial correlation), LFC (lateral femoral condyle), LT (lateral tibia), MFC (medial femoral condyle) MT (medial tibia), PAT (patella), TRO (Trochlea), Ave (average T2 in all compartments) SUM (Summation of WORMS scores across all regions), MAX (Maximum WORMS scores in any region).

Interestingly, when subdividing the partial correlations between subjects with KL 0 or 1 and subjects with KL 2 or 3: subjects with KL 0 or 1 ($n = 34$) had higher correlations between sMMP3 and cartilage parameters compared to subjects with KL 2 or 3, and compared to the entire cohort. The correlations between sMMP3 and cartilage parameters in subjects with KL 0 or 1 were significant in the average of all compartments: ($r = 0.52$, $P = 0.004$, 95% CI: 0.41–0.75), patella ($r = 0.41$, $P = 0.03$, 95% CI: 0.26–0.61), and medial tibia ($r = 0.48$, $P = 0.009$, 95% CI: 0.35–0.69). In subjects with KL 2 or 3 ($n = 107$), the correlations between sMMP3 and T2 parameters were not significant: average of all compartments: ($r = 0.14$, $P = 0.14$, 95% CI: –0.03 to 0.31), patella ($r = 0.02$, $P = 0.80$, 95% CI: –0.15 to 0.19), and medial tibia ($r = 0.09$, $P = 0.37$, 95% CI: –0.08 to 0.26). However, subjects with KL 2 or 3 had significant correlations between sHA and T2 parameters (average of all compartments $r = 0.25$, $P = 0.009$, 95% CI: 0.08–0.43; lateral femur $r = 0.30$, $P = 0.002$, 95% CI: 0.14–0.48 and the lateral tibia $r = 0.23$, $P = 0.02$, 95% CI: –0.06 to 0.41). The correlations between T2 and sCOMP were not significantly different when subdivided by KL grade.

Joint morphology

There were no significant associations between the primary serum/urine biomarkers and cartilage WORMS scores, **Table III**. sHA was significantly correlated with meniscus WORMS scores for the medial body ($r = 0.19$, $P = 0.02$, 95% CI: 0.02–0.36), and maximum score of all regions ($r = 0.17$, $P = 0.05$, 95% CI: 0.00–0.34), **Table III**. sMMP3 was significantly correlated with meniscus WORMS scores for the medial body ($r = 0.21$, $P = 0.01$, 95% CI: 0.04–0.38), lateral anterior horn ($r = 0.18$, $P = 0.04$, 95% CI: 0.01–0.35), lateral body ($r = 0.19$, $P = 0.02$, 95% CI: 0.02–0.36) and maximum score of all regions ($r = 0.19$, $P = 0.02$, 95% CI: 0.02–0.36), **Table III**. sCOMP and uCTXII were not significantly associated with meniscus WORMS scores. The only significant association between serum/urine biomarkers and bone marrow abnormalities graded by the WORMS

Associations between serum HA and cartilage T2

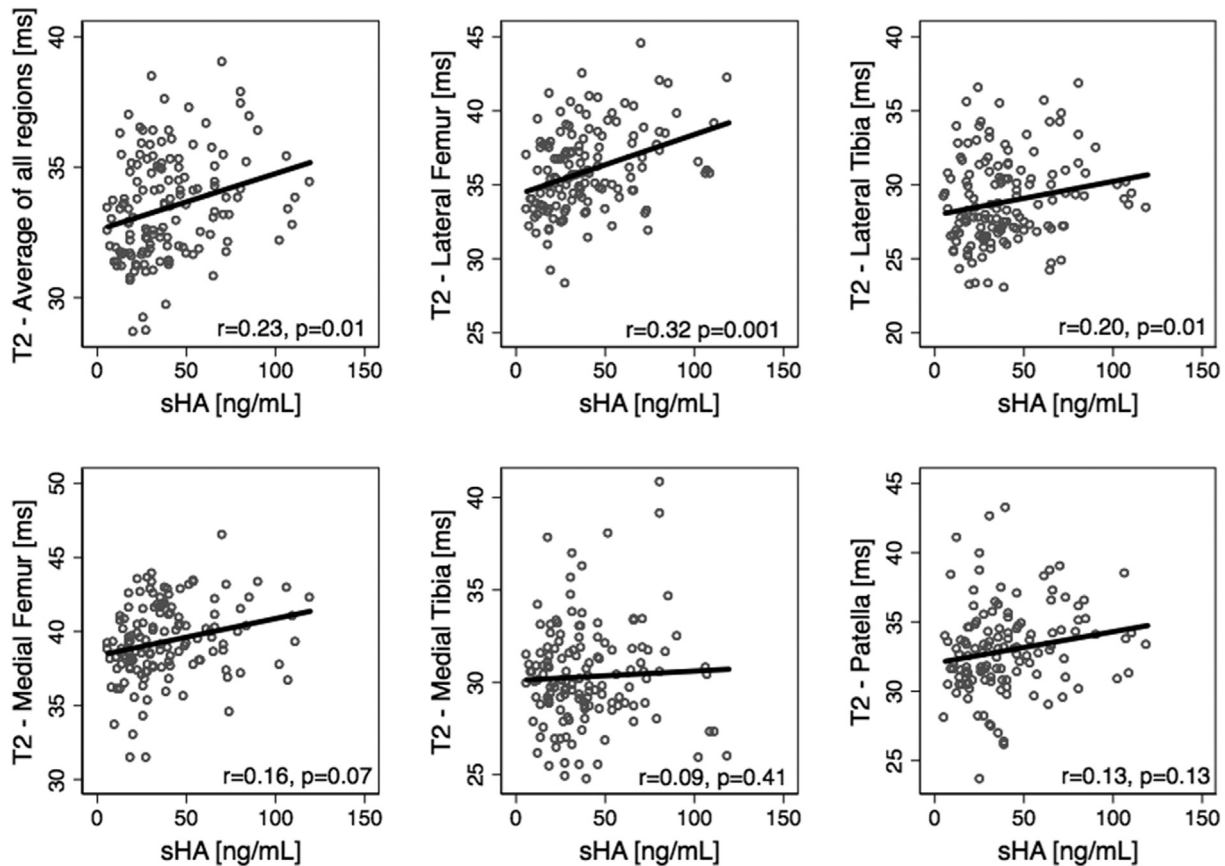


Fig. 1. Scatterplots with a line fit using linear regression illustrate the associations between sHA and cartilage T2. Partial correlations are listed with adjustments for age, gender, BMI, diabetes status, and KL grade in both knees.

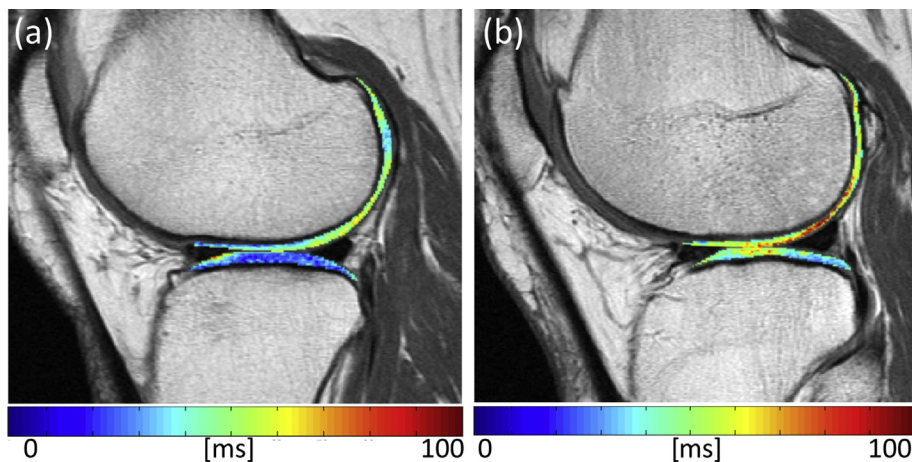


Fig. 2. Randomly selected cartilage T2 maps in (a) a subject with low sMMP3 of 8.3–20th percentile (b) and a subject with high sMMP3 29.9–90th percentile. The subject with high sMMP3 values also has high cartilage T2 values (in ms), as shown by the red areas in the cartilage.

score was with sMMP3 for the lateral tibia ($r = 0.20$, $P = 0.02$, 95% CI: 0.03–0.37), [Supplementary Table 2](#). For the exploratory predictors, significant associations were found between joint morphology and biomarkers including Coll21NO2, [Supplementary Table 3](#). We also performed a sensitivity analysis in only subjects with medial JSN at baseline (61%) and found similar results to those of the entire sample. There were only 3 subjects with lateral JSN in

the sample, thus a sensitivity analysis in these subjects could not be performed.

Longitudinal changes in biomarkers

Subjects had significant increases in sHA over 2 years (increase (ng/mL)/year = 4.3, $P < 0.0001$, 95% CI: 2.15–6.36). The longitudinal

changes in sCOMP (-1.06 ng/mL/year; $P = 0.87$, 95% CI: -13.9 – 11.8), sMMP3 (-0.07 ng/mL/year; $P = 0.80$, 95% CI: -0.62 – 0.49), and uCTXII (1.58 ng/mmol Cr/year; $P = 0.10$, 95% CI: -0.03 to 0.35) were not significant. Both baseline T2 and presence of a cartilage defect were not significantly associated with the rate of change in sHA over 2 years ($P = 0.77$ respectively $P = 0.99$); however, subjects with meniscus tears showed increases in sHA over time (coeff = 3.86 , $P = 0.08$, 95% CI: -0.53 to 8.26) compared to subjects without meniscus tears.

While subjects with cartilage defects at baseline had consistently higher sHA values than subjects without defects over 2 years, the differences were not significant (coeff = 8.37 , $P = 0.13$, 95% CI: -2.54 to 19.28). However, subjects with high T2 values (averaged over all compartments) at baseline had significantly greater sHA than subjects with low T2 values (T2 Tertile 3 vs T2 Tertile 1: coeff = 14.82 , $P = 0.01$, 95% CI: 3.41 – 26.19) suggesting that subjects with cartilage biochemical abnormalities at baseline had consistently increased expression of sHA over 2 years, Fig. 3. Similarly, subjects with high T2 values (averaged over all compartments) at baseline had significantly greater sMMP3 (T2 Tertile 3 vs T2 Tertile 1: coeff = 4.74 , $P = 0.006$, 95% CI: 1.34 – 8.13), sCOMP (T2 Tertile 3 vs T2 Tertile 1: coeff = 131.51 , $P = 0.01$, 95% CI: 26.59 – 236.43), and uCTXII (T2 Tertile 3 vs T2 Tertile 1: coeff = 0.72 , $P = 0.04$, 95% CI: 0.02 – 1.43) than subjects with low T2 values.

Discussion

Our study has shown significant positive correlations between the serum biomarkers (sHA, sMMP3, sCOMP), and cartilage T2, a measure of early cartilage degeneration. However, no significant associations were found between the primary serum/urine biomarkers and cartilage morphology or KL grade. While the correlations between serum/urine biomarkers and cartilage T2 were relatively low but significant ($r \sim 0.20$), the results suggest that serum biomarkers may be sensitive to biochemical changes in cartilage that may not be related to morphologic damage and may thus represent early cartilage matrix degeneration.

One of the strengths of the current study is its focus on quantifying early biochemical stages of cartilage degeneration using cartilage T2 mapping. While previous research studies on serum/urine markers in OA have primarily focused on radiographic OA^{5–7}, few studies have investigated the relationships between biomarkers and cartilage compositional markers. One study targeting early arthroscopic finding in OA³² reported positive associations between sHA, sCOMP and arthroscopic findings of cartilage softening and swelling (Outerbridge score of 1) and partial thickness defects (Outerbridge score of 2). Our study found similar results showing positive correlations between sHA, sCOMP and early cartilage biochemical degeneration associated with elevated cartilage T2. Interestingly, a high baseline T2 (>66th percentile) was also

associated with consistently higher levels of sHA over 2 years of follow-up. One mechanism that may explain the relationship between cartilage degeneration and hyaluronan (HA) was suggested by Jiao *et al.*: that cartilage damage may initiate a pathologic inflammatory response, which promotes increases in HA production by the inflamed synovium³². Overall, our study demonstrates positive associations between serum marker sHA, suggesting that these markers are associated with early biochemical changes in the cartilage extracellular matrix (ECM).

Studies have reported varying results on the associations between serum/urine biomarkers and knee morphology. Hunter *et al.* reported positive correlations with cartilage loss (for a 1-unit increase in COMP, the odds of cartilage loss increased 6.09 times (95% confidence interval [CI] 1.34 – 27.67)³³, while Eckstein *et al.*, found that uCTXII and sCOMP were not associated longitudinal cartilage thinning over 24 months³⁴. Another study reported no associations between baseline biochemical markers and cartilage volume or thickness, but changes in CTXII over 3 months were associated with decreases in cartilage thickness over 1 year⁴. Our study found no significant correlations between the primary serum/urine biomarkers and cartilage WORMS scores, suggesting that focal cartilage damage is not associated with sCOMP, sHA, sMMP3, and uCTXII, and may potentially be related to focal rather than diffuse abnormality of the cartilage.

Interestingly one of the exploratory, less-well established predictors, Coll21NO2, was associated with cartilage T2, cartilage WORMS, and meniscus WORMS scores in various compartments (Supplementary Table 3). This biomarker is related to collagen Type II degradation and may reflect oxidative-related cartilage degeneration³⁵. Studies have shown elevated Coll21NO2 in subjects with OA³⁵, and increases in these peptides over 1 year were predictive of radiographic knee OA progression³⁶. Thus, Coll21NO2 may be an important biomarker that to be considered for future longitudinal evaluation.

In this study, no significant associations between KL score and biochemical markers were found. Previous studies have reported varied results: Golightly *et al.*⁷ showed positive higher baseline COMP and HA levels were associated with incident knee OA over an average follow-up period of 6.3 years, while Bruyere *et al.* reported no cross-sectional associations between biochemical markers (serum keratan sulphate, serum hyaluronic acid, urine pyridinoline and deoxypyridinoline, serum osteocalcin, and COMP) and femorotibial joint space width in more than 200 patients with knee OA³⁷. In this study, perhaps, the non-significant associations between biochemical markers and KL score may be attributed to its cross-sectional nature and uneven distribution of KL grade, weighted toward knee KL 2: almost half of the subjects (46.8%, $n = 66$) had a KL 2.

Ideally, biomarkers could be used as diagnostic tools to identify subjects at high risk for the development or progression of OA at

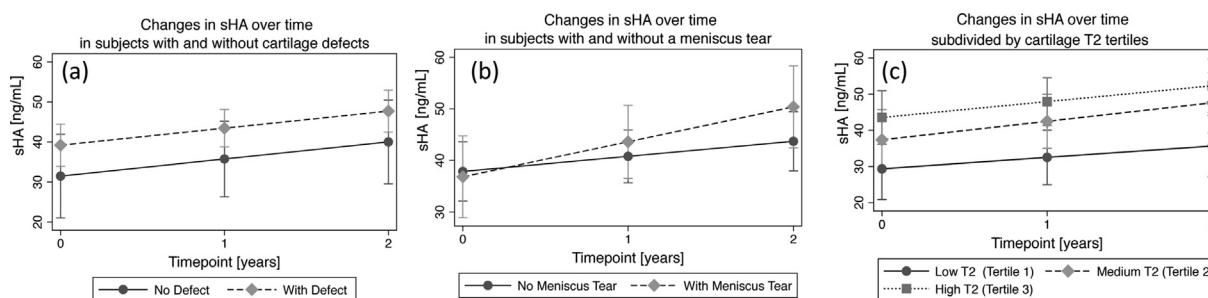


Fig. 3. Mixed random effects models of absolute rates of change in sHA (with 95% confidence intervals) subdivided by (a) presence of a partial thickness cartilage defect in a knee, (b) presence of a meniscal tear and (c) cartilage T2 values (averaged over all compartments) subdivided into tertiles. Timepoint “0” indicates baseline.

which point therapy is most effective, or to test efficacy of therapeutic intervention. Serum/urine biomarkers are dynamic in nature^{22,31}, could represent a delayed biological event that may have occurred in the joint, and are affected by injury³⁸ or exercise³⁹. In contrast, MRI and X-ray imaging offer a more stable evaluation of joint structures, and vary more slowly over time. Accordingly, the relatively low correlations in this study ($r \sim 0.2$) were not unexpected, highlighting the heterogeneity of OA, and that the systemic biomarker changes may only partially explain the biochemical composition captured with MRI T2 during degeneration. Clinically, we believe that both serum biomarkers and MR imaging data provide complementary information comprising both the dynamic changes occurring during joint degeneration and overall disease status, thus highlighting the need for longitudinal evaluations of long-term prognostic value.

There are several limitations of this study: we only analyzed T2 measurements of cartilage composition as provided by the OAI, and it would be beneficial to study other quantitative cartilage assessments such as T1rho mapping. In addition, no significant associations were found between serum/urine biomarkers and knee pain score. These results may be due to the fact that subjects in this study had low knee pain (mean WOMAC knee pain score = 2.6 ± 3.3) based on the WOMAC knee pain scale, which ranges from 0 to 20. A large number of analyses were performed in this study and thus the results should be interpreted with caution. Despite these limitations, we feel that this study is unique: it is the first to assess the relationships between serum/urine biomarkers and MRI cartilage biochemical composition quantified using cartilage T2.

Overall, this study suggests weak but significant associations between serum biochemical markers of OA (sHA, sMMP3, sCOMP) and MRI T2 biochemical degeneration of the cartilage ECM. Based on our results, serum biomarkers and cartilage T2 composition may reflect similar features of the pathophysiology of cartilage matrix degenerative disease.

Contributions

Conception and design: GBJ, MCN, CEM, JN, JAL, UH, NEL TML

Analysis and interpretation of the data: GBJ, MCN, CEM, JN, UH, NEL, TML

Drafting of the article: GBJ, MCN, CEM, JN, JAL, UH, NEL TML

Critical revision of the article for important intellectual content: GBJ, MCN, CEM, JN, JAL, UH, NEL TML

Statistical expertise: GBJ, CEM

Collection and assembly of data: GBJ, JN, JAL, UH

Final approval of the article: GBJ, MCN, CEM, JN, JAL, UH, NEL TML

Competing interests

None.

Role of funding source

This study was funded by NIH P50-AR060752 and NIH R01-AR064771. The OAI is a public-private partnership comprised of five contracts (N01-AR-2-2258; N01-AR-2-2259; N01-AR-2-2260; N01-AR-2-2261; N01-AR-2-2262) funded by the National Institutes of Health, a branch of the Department of Health and Human Services, and conducted by the OAI Study Investigators. Private funding partners include Merck Research Laboratories; Novartis Pharmaceuticals Corporation, GlaxoSmithKline; and Pfizer, Inc. Private sector funding for the OAI is managed by the Foundation for the National Institutes of Health.

Supplementary data

Supplementary data related to this article can be found at <https://doi.org/10.1016/j.joca.2018.04.019>.

Appendix

The absence of a significant interaction with time in the longitudinal analysis suggests the biomarkers are consistently elevated, and supports combining the three timepoints for cross-sectional analysis.

References

- Murray CJ, Vos T, Lozano R, Naghavi M, Flaxman AD, Michaud C, et al. Disability-adjusted life years (DALYs) for 291 diseases and injuries in 21 regions, 1990–2010: a systematic analysis for the Global Burden of Disease Study 2010. *Lancet* 2012;380:2197–223.
- Murphy L, Helmick CG. The impact of osteoarthritis in the United States: a population-health perspective. *Am J Nurs* 2012;112:S13–9.
- Carr AJ, Robertsson O, Graves S, Price AJ, Arden NK, Judge A, et al. Knee replacement. *Lancet* 2012;379:1331–40.
- Bruyere O, Collette J, Kothari M, Zaim S, White D, Genant H, et al. Osteoarthritis, magnetic resonance imaging, and biochemical markers: a one year prospective study. *Ann Rheum Dis* 2006;65:1050–4.
- Vilim V, Olejarova M, Machacek S, Gatterova J, Kraus VB, Pavelka K. Serum levels of cartilage oligomeric matrix protein (COMP) correlate with radiographic progression of knee osteoarthritis. *Osteoarthritis Cartilage* 2002;10:707–13.
- Garnero P, Mazieres B, Gueguen A, Abbal M, Berdah L, Lequesne M, et al. Cross-sectional association of 10 molecular markers of bone, cartilage, and synovium with disease activity and radiological joint damage in patients with hip osteoarthritis: the ECHODIAH cohort. *J Rheumatol* 2005;32:697–703.
- Golightly YM, Marshall SW, Kraus VB, Renner JB, Villaveces A, Casteel C, et al. Biomarkers of incident radiographic knee osteoarthritis: do they vary by chronic knee symptoms? *Arthritis Rheum* 2011;63:2276–83.
- AlOmrani AS. Osteoarthritis of knee: correlation between radiographic and arthroscopic findings. *Int Surg* 2009;94:269–72.
- Xia Y. Magic-angle effect in magnetic resonance imaging of articular cartilage: a review. *Invest Radiol* 2000;35:602–21.
- Peterfy C, Schneider E, Nevitt M. The osteoarthritis initiative: report on the design rationale for the magnetic resonance imaging protocol for the knee. *Osteoarthritis Cartilage* 2008;16:1433–41.
- Collins JE, Losina E, Nevitt MC, Roemer FW, Guermazi A, Lynch JA, et al. Semiquantitative imaging biomarkers of knee osteoarthritis progression: data from the Foundation for the National Institutes of Health Osteoarthritis Biomarkers Consortium. *Arthritis Rheumatol* 2016;68:2422–31.
- Baum T, Stehling C, Joseph GB, Carballido-Gamio J, Schwaiger BJ, Muller-Hocker C, et al. Changes in knee cartilage T2 values over 24 months in subjects with and without risk factors for knee osteoarthritis and their association with focal knee lesions at baseline: data from the osteoarthritis initiative. *J Magn Reson Imag* 2012;35:370–8.
- Joseph GB, Baum T, Carballido-Gamio J, Nardo L, Virayavanich W, Alizai H, et al. Texture analysis of cartilage T2 maps: individuals with risk factors for OA have higher and more heterogeneous knee cartilage MR T2 compared to normal controls—data from the osteoarthritis initiative. *Arthritis Res Ther* 2011;13:R153.
- Stehling C, Lane NE, Nevitt MC, Lynch J, McCulloch CE, Link TM. Subjects with higher physical activity levels have more severe focal knee lesions diagnosed with 3T MRI: analysis of a non-

- symptomatic cohort of the osteoarthritis initiative. *Osteoarthritis Cartilage* 2010;18:776–86.
15. Kretzschmar M, Lin W, Nardo L, Joseph GB, Dunlop DD, Heilmeier U, *et al.* Association of physical activity measured by accelerometer, knee joint abnormalities, and cartilage T2 measurements obtained from 3T magnetic resonance imaging: data from the osteoarthritis initiative. *Arthritis Care Res* 2015;67:1272–80.
 16. Gersing AS, Solka M, Joseph GB, Schwaiger BJ, Heilmeier U, Feuerriegel G, *et al.* Progression of cartilage degeneration and clinical symptoms in obese and overweight individuals is dependent on the amount of weight loss: 48-month data from the Osteoarthritis Initiative. *Osteoarthritis Cartilage* 2016 Jul;24(7):1126–34.
 17. Attur M, Krasnokutsky-Samuels S, Samuels J, Abramson SB. Prognostic biomarkers in osteoarthritis. *Curr Opin Rheumatol* 2013;25:136–44.
 18. Garnerio P. Use of biochemical markers to study and follow patients with osteoarthritis. *Curr Rheumatol Rep* 2006;8:37–44.
 19. Hoch JM, Mattacola CG, Medina McKeon JM, Howard JS, Lattermann C. Serum cartilage oligomeric matrix protein (sCOMP) is elevated in patients with knee osteoarthritis: a systematic review and meta-analysis. *Osteoarthritis Cartilage* 2011;19:1396–404.
 20. Singh S, Kumar D, Sharma NR. Role of hyaluronic acid in early diagnosis of knee osteoarthritis. *J Clin Diagn Res* 2014;8:LC04–7.
 21. Kumm J, Tamm A, Lintrop M, Tamm A. The value of cartilage biomarkers in progressive knee osteoarthritis: cross-sectional and 6-year follow-up study in middle-aged subjects. *Rheumatol Int* 2013;33:903–11.
 22. Kraus VB, Collins JE, Hargrove D, Losina E, Nevitt M, Katz JN, *et al.* Predictive validity of biochemical biomarkers in knee osteoarthritis: data from the FNIH OA Biomarkers Consortium. *Ann Rheum Dis* 2017;76:186–95.
 23. Kraus VB, Hargrove DE, Hunter DJ, Renner JB, Jordan JM. Establishment of reference intervals for osteoarthritis-related soluble biomarkers: the FNIH/OARSI OA Biomarkers Consortium. *Ann Rheum Dis* 2017;76:179–85.
 24. Kellgren J, Lawrence J. Radiologic assessment of osteoarthritis. *Ann Rheum Dis* 1957;16:494–502.
 25. Peterfy CG, Guermazi A, Zaim S, Tirman PF, Miaux Y, White D, *et al.* Whole-organ magnetic resonance imaging score (WORMS) of the knee in osteoarthritis. *Osteoarthritis Cartilage* 2004;12:177–90.
 26. Stahl R, Jain S, Lutz J, Wyman B, Graverand-Gastineau M, Vignon E, *et al.* Osteoarthritis of the knee at 3.0 T: comparison of a quantitative and a semi-quantitative score for the assessment of the extent of cartilage lesion and bone marrow edema pattern in a 24-month longitudinal study. *Skeletal Radiol* 2011;40:1315–27.
 27. Joseph GB, Baum T, Alizai H, Carballido-Gamio J, Nardo L, Virayavanich W, *et al.* Baseline mean and heterogeneity of MR cartilage T2 are associated with morphologic degeneration of cartilage, meniscus, and bone marrow over 3 years—data from the Osteoarthritis Initiative. *Osteoarthritis Cartilage* 2012;20:727–35.
 28. Stehling C, Baum T, Mueller-Hoecker C, Liebl H, Carballido-Gamio J, Joseph GB, *et al.* A novel fast knee cartilage segmentation technique for T2 measurements at MR imaging—data from the Osteoarthritis Initiative. *Osteoarthritis Cartilage* 2011;19:984–9.
 29. Miller AJ, Joseph PM. The use of power images to perform quantitative analysis on low SNR MR images. *Magn Reson Imaging* 1993;11:1051–6.
 30. Raya J, Dietrich O, Horng A, Weber J, Reiser M, Glaser C. T2 measurement in articular cartilage: impact of the fitting method on accuracy and precision at low SNR. *Magn Reson Med* 2010;63:181–93.
 31. Sharif M, Kirwan JR, Elson CJ, Granell R, Clarke S. Suggestion of nonlinear or phasic progression of knee osteoarthritis based on measurements of serum cartilage oligomeric matrix protein levels over five years. *Arthritis Rheum* 2004;50:2479–88.
 32. Jiao Q, Wei L, Chen C, Li P, Wang X, Li Y, *et al.* Cartilage oligomeric matrix protein and hyaluronic acid are sensitive serum biomarkers for early cartilage lesions in the knee joint. *Biomarkers* 2016;21:146–51.
 33. Hunter DJ, Li J, LaValley M, Bauer DC, Nevitt M, DeGroot J, *et al.* Cartilage markers and their association with cartilage loss on magnetic resonance imaging in knee osteoarthritis: the Boston Osteoarthritis Knee Study. *Arthritis Res Ther* 2007;9:R108.
 34. Eckstein F, Le Graverand M, Charles H, Hunter D, Kraus V, Sunyer T, *et al.* Clinical, radiographic, molecular and MRI-based predictors of cartilage loss in knee osteoarthritis. *Ann Rheum Dis* 2011;70:1223.
 35. Deberg M, Labasse A, Christgau S, Cloos P, Bang Henriksen D, Chapelle JP, *et al.* New serum biochemical markers (Coll 2-1 and Coll 2-1 NO2) for studying oxidative-related type II collagen network degradation in patients with osteoarthritis and rheumatoid arthritis. *Osteoarthritis Cartilage* 2005;13:258–65.
 36. Deberg MA, Labasse AH, Collette J, Seidel L, Reginster JY, Henrotin YE. One-year increase of Coll 2-1, a new marker of type II collagen degradation, in urine is highly predictive of radiological OA progression. *Osteoarthritis Cartilage* 2005;13:1059–65.
 37. Bruyere O, Collette JH, Ethgen O, Rovati LC, Giacobelli G, Henrotin YE, *et al.* Biochemical markers of bone and cartilage remodeling in prediction of longterm progression of knee osteoarthritis. *J Rheumatol* 2003;30:1043–50.
 38. Catterall JB, Stabler TV, Flannery CR, Kraus VB. Changes in serum and synovial fluid biomarkers after acute injury (NCT00332254). *Arthritis Res Ther* 2010;12:R229.
 39. Frisbie DD, Al-Sobayil F, Billingham RC, Kawcak CE, McIlwraith CW. Changes in synovial fluid and serum biomarkers with exercise and early osteoarthritis in horses. *Osteoarthritis Cartilage* 2008;16:1196–204.