

UC Irvine

UC Irvine Previously Published Works

Title

Connectome architecture shapes large-scale cortical alterations in schizophrenia: a worldwide ENIGMA study.

Permalink

<https://escholarship.org/uc/item/6vf2025w>

Journal

Molecular Psychiatry, 29(6)

Authors

Georgiadis, Foivos

Larivière, Sara

Glahn, David

et al.

Publication Date

2024-06-01

DOI

10.1038/s41380-024-02442-7

Copyright Information

This work is made available under the terms of a Creative Commons Attribution License, available at <https://creativecommons.org/licenses/by/4.0/>

Peer reviewed

ARTICLE OPEN



Connectome architecture shapes large-scale cortical alterations in schizophrenia: a worldwide ENIGMA study

Foivos Georgiadis¹✉, Sara Larivière², David Glahn³, L. Elliot Hong⁴, Peter Kochunov⁴, Bryan Mowry⁵, Carmel Loughland⁶, Christos Pantelis⁷, Frans A. Henskens⁸, Melissa J. Green⁹, Murray J. Cairns¹⁰, Patricia T. Michie¹¹, Paul E. Rasser¹², Stanley Catts¹³, Paul Tooney^{10,14}, Rodney J. Scott¹⁰, Ulrich Schall¹⁴, Vaughan Carr¹⁵, Yann Quidé⁹, Axel Krug¹⁶, Frederike Stein¹⁷, Igor Nenadić¹⁸, Katharina Brosch¹⁷, Tilo Kircher¹⁷, Raquel Gur¹⁹, Ruben Gur¹⁹, Theodore D. Satterthwaite¹⁹, Andriana Karuk²⁰, Edith Pomarol-Clotet²⁰, Joaquim Radua²¹, Paola Fuentes-Claramonte²⁰, Raymond Salvador²⁰, Gianfranco Spalletta²², Aristotle Voineskos¹⁰, Kang Sim²³, Benedicto Crespo-Facorro²⁴, Diana Tordesillas Gutiérrez²⁵, Stefan Ehrlich²⁶, Nicolas Crossley²⁷, Dominik Grotegerd²⁸, Jonathan Repple²⁸, Rebekka Lencer²⁸, Udo Dannlowski²⁸, Vince Calhoun²⁹, Kelly Rootes-Murdy²⁹, Caroline Demro^{30,31}, Ian S. Ramsay³², Scott R. Sponheim^{31,32}, Andre Schmidt³³, Stefan Borgwardt³⁴, Alexander Tomyshev³⁵, Irina Lebedeva³⁵, Cyril Höschl³⁶, Filip Spaniel³⁶, Adrian Preda³⁷, Dana Nguyen³⁸, Anne Uhlmann³⁹, Dan J. Stein⁴⁰, Fleur Howells⁴⁰, Henk S. Temmingh⁴⁰, Ana M. Diaz Zuluaga⁴¹, Carlos López Jaramillo⁴¹, Felice Iasevoli⁴², Ellen Ji⁴³, Stephanie Homan⁴³, Wolfgang Omlor⁴³, Philipp Homan⁴³, Stefan Kaiser⁴³, Erich Seifritz⁴³, Bratislav Misic⁴⁴, Sofie L. Valk^{44,45}, Paul Thompson⁴⁶, Theo G. M. van Erp³⁷, Jessica A. Turner⁴⁷ and , ENIGMA Schizophrenia Consortium*, Boris Bernhardt^{2,48} and Matthias Kirschner^{1,43,48}✉

© The Author(s) 2024

Schizophrenia is a prototypical network disorder with widespread brain-morphological alterations, yet it remains unclear whether these distributed alterations robustly reflect the underlying network layout. We tested whether large-scale structural alterations in schizophrenia relate to normative structural and functional connectome architecture, and systematically evaluated robustness and generalizability of these network-level alterations. Leveraging anatomical MRI scans from 2439 adults with schizophrenia and 2867 healthy controls from 26 ENIGMA sites and normative data from the Human Connectome Project ($n = 207$), we evaluated structural alterations of schizophrenia against two network susceptibility models: (i) hub vulnerability, which examines associations between regional network centrality and magnitude of disease-related alterations; (ii) epicenter mapping, which identifies regions whose typical connectivity profile most closely resembles the disease-related morphological alterations. To assess generalizability and specificity, we contextualized the influence of site, disease stages, and individual clinical factors and compared network associations of schizophrenia with that found in affective disorders. Our findings show schizophrenia-related cortical thinning is spatially associated with functional and structural hubs, suggesting that highly interconnected regions are more vulnerable to morphological alterations. Predominantly temporo-paralimbic and frontal regions emerged as epicenters with connectivity profiles linked to schizophrenia's alteration patterns. Findings were robust across sites, disease stages, and related to individual symptoms. Moreover, transdiagnostic comparisons revealed overlapping epicenters in schizophrenia and bipolar, but not major depressive disorder, suggestive of a pathophysiological continuity within the schizophrenia-bipolar-spectrum. In sum, cortical alterations over the course of schizophrenia robustly follow brain network architecture, emphasizing marked hub susceptibility and temporo-frontal epicenters at both the level of the group and the individual. Subtle variations of epicenters across disease stages suggest interacting pathological processes, while associations with patient-specific symptoms support additional inter-individual variability of hub vulnerability and epicenters in schizophrenia. Our work outlines potential pathways to better understand macroscale structural alterations, and inter-individual variability in schizophrenia.

Molecular Psychiatry (2024) 29:1869–1881; <https://doi.org/10.1038/s41380-024-02442-7>

INTRODUCTION

Neuropsychiatric disorders including schizophrenia (SCZ), bipolar (BD) and major depressive disorders (MDD), are increasingly recognized as network disorders [1–4] characterized by widespread cortical and subcortical alterations [5–10]. Among these, SCZ is associated with the most severe and distributed structural

alterations [6, 11, 12] appearing in all disease stages [13], with temporal-paralimbic and frontal regions being maximally affected [5, 13–15]. However, the pattern is not uniformly distributed across the entire brain [15] raising the question how the brain's connectome architecture guides the spatial distribution of subcortical and cortical alterations in SCZ [5, 6]. The staggering

A full list of author affiliations appears at the end of the paper.

Received: 14 September 2023 Revised: 8 January 2024 Accepted: 18 January 2024

Published online: 9 February 2024

interconnectedness of regions in the brain, which gives rise to a multi-level network architecture, suggests that local aberrant functioning may affect synaptically-connected neuronal populations [16, 17]. Distributed structural alterations could, thus, arise from, or be influenced by, network architecture and manifest as a diverse set of cognitive and affective symptoms. Recent studies have found that patterns of cortical alterations in SCZ, when compared to controls, reflect distinct functional and cytoarchitectural systems [14, 18], as well as cortical connectivity [13]. This suggests that SCZ-related cortical alterations are not randomly distributed, but shaped by the underlying brain network architecture.

In the healthy brain, there are important inter-regional variations in connectivity, with hub regions showing denser connectivity patterns to other regions [19, 20]. These regions may serve as central information relays, promoting processing efficiency [1]. High centrality of a region, however, may render it more susceptible to metabolic demands, potentially predisposing it to pronounced structural alterations – termed the nodal stress or hub vulnerability hypothesis. [1, 21, 22]. Consistent with this, higher vulnerability of hubs to structural damage has been reported across multiple neurological and neurodegenerative disorders [20, 22–26] and more recently in SCZ [2, 14, 15, 27]. In addition, regional pathological processes might propagate from “disease epicenters” to connected brain regions leading to network-spreading patterns of morphological alterations. Initially established in the study of neurodegenerative disorders [22, 28–30] and increasingly investigated in neuropsychiatric and cross-disorder studies, epicenters are defined as regions whose normative connectivity profile most closely resembles disease-related morphological alteration patterns [14, 22, 26, 29]. In other words, disease epicenters are connected to those brain regions with the strongest disease-related morphological alterations. As such, disease epicenters do not necessarily have to be hub regions, but rather might reflect regions that are directly connected to hubs. In schizophrenia, paralimbic and frontal regions have been recently identified as epicenter candidates, by comparing structural alteration patterns in chronic stages to normative brain connectivity information [14]. An important next step is to test whether associations between normative network features and the structural alteration in SCZ are robust and replicable using multisite imaging data and standardized methods [31, 32], and how they relate to different disease stages and individual clinical profiles. In addition, it remains an open question how patterns of hub vulnerability and epicenters differ between major psychiatric disorders along the schizophrenia-bipolar spectrum.

The Enhancing Neuro Imaging Genetics through Meta Analysis (ENIGMA) consortium, has aggregated neuroimaging data of disease phenotypes [33] in thousands of patients and controls, enabling robust inquiries into morphological alterations across sites, disease stages and individual clinical factors. Here, we used two network-based models combining MRI-based morphology data of 2,439 adults with SCZ and 2,867 healthy controls (HC) from the ENIGMA-Schizophrenia consortium and high definition structural and functional normative connectivity data from the HCP ($n = 207$) [34]. We tested the hypothesis that network-central brain regions (i.e., hubs) are more vulnerable to morphometric alterations in SCZ and that individual brain regions' connectivity profiles shape the spatial distribution of cortical alterations in SCZ. First, we applied hub vulnerability models to spatially correlate regional network centrality with the degree of SCZ-related cortical thickness and subcortical volume alterations derived from case-control comparisons. Second, we leveraged epicenter models to systematically investigate the influence of every brain region's connectivity profile to the spatial distribution of SCZ-related cortical thickness alterations. To assess generalizability and specificity of these network associations, we contextualized the

influence of site, disease stage of SCZ, individual clinical profiles, and compared network associations between thickness and surface area alterations. Finally, we examined whether our network models would reflect SCZ-specific features or rather represent a shared signature across other major psychiatric conditions [35] such as has been shown for subcortical volume, cortical thickness, surface area measures [12, 36, 37], structural covariance [11], and connectome properties [3]. Therefore, we extended our analysis to meta-analytic case-control alterations in BD and MDD. Both disorders show various degrees of clinical, genetic, and neuroanatomic proximity to SCZ, with BD being more proximal [35, 38–42] and MDD being more distant with respect to the genetic, clinical, and morphometric patterns of SCZ [36, 37, 39].

METHODS

The overall workflow including the multi-source data integration and the different levels of analysis are illustrated in Fig. 1. The network modeling code (MATLAB) is publicly available from the ENIGMA Toolbox [32]. All further statistical analyses were performed in R version 4.3.0.

ENIGMA participants

We analyzed subject-level data from 26 international centers of the ENIGMA-SCZ Working Group including 2,439 adults with SCZ (786 females, mean age \pm SD = 35.5 ± 12.4 years) and 2,867 healthy controls (1,408 females, mean age \pm SD = 35.0 ± 13.4 years). Diagnosis of SCZ or schizoaffective disorder was confirmed at each center using the international diagnostic criteria of the ICD-10 (or DSM-IV). Details on subject inclusion criteria and site-specific demographic information are provided in Tables S1 and S2. Local institutional review boards and ethics committees approved each cohort study included, and written informed consent was provided according to local requirements.

Image acquisition and processing

Following published ENIGMA pipelines [5, 6], all 26 participating sites processed 3D T1-weighted structural brain MRI scans using FreeSurfer [43, 44] and extracted cortical thickness (CT) from 68 Desikan-Killiany (DK) atlas regions [45] as well as subcortical volume (SV) data from 16 brain structures. Number of scanners, vendor, strength, sequence, acquisition parameters, and FreeSurfer versions are provided in Table S3. Quality control followed standard ENIGMA protocols at each site before subsequent mega-analysis (<http://enigma.usc.edu/protocols/imaging-protocols>).

Statistical mega-analysis

We analyzed CT measures from 68 cortical regions and SV measures from 12 subcortical gray matter regions (bilateral amygdala, caudate, nucleus accumbens, pallidum, putamen, and thalamus) and bilateral hippocampi. Data were first harmonized across scanners and sites using ComBat, a batch effect correction tool that uses a Bayesian framework to improve the stability of the parameter estimates [46, 47]. Linear models were used to compare morphometric difference profiles of CT and SV in patients relative to controls, correcting for age and sex, using SurfStat, available at (<https://mica-mni.github.io/surfstat/>) [48, 49]. Findings were corrected for multiple comparisons using the false discovery rate (FDR) procedure [50]. To further confirm that our batch-effect correction with ComBat on the structural MRI data was successful, we performed the original linear regression with ComBat adjusted, as well as unadjusted data, and added site as an independent variable. We then compared the partial R^2 of site as independent variable in both models. Table S4 showed that in the ComBat adjusted data any variance explained by site was removed, thereby confirming successful batch-effect correction in our mega-analysis.

Functional and connectivity matrix generation from HCP data

Resting-state fMRI, and diffusion MRI of unrelated healthy adults ($n = 207$, 83 males, mean age \pm SD = 28.73 ± 3.73 years, range = 22 to 36 years) from the HCP were used and underwent the initiative's minimal preprocessing [51, 52]. High-resolution functional and structural data were parcellated according to the Desikan-Killiany atlas to align with the

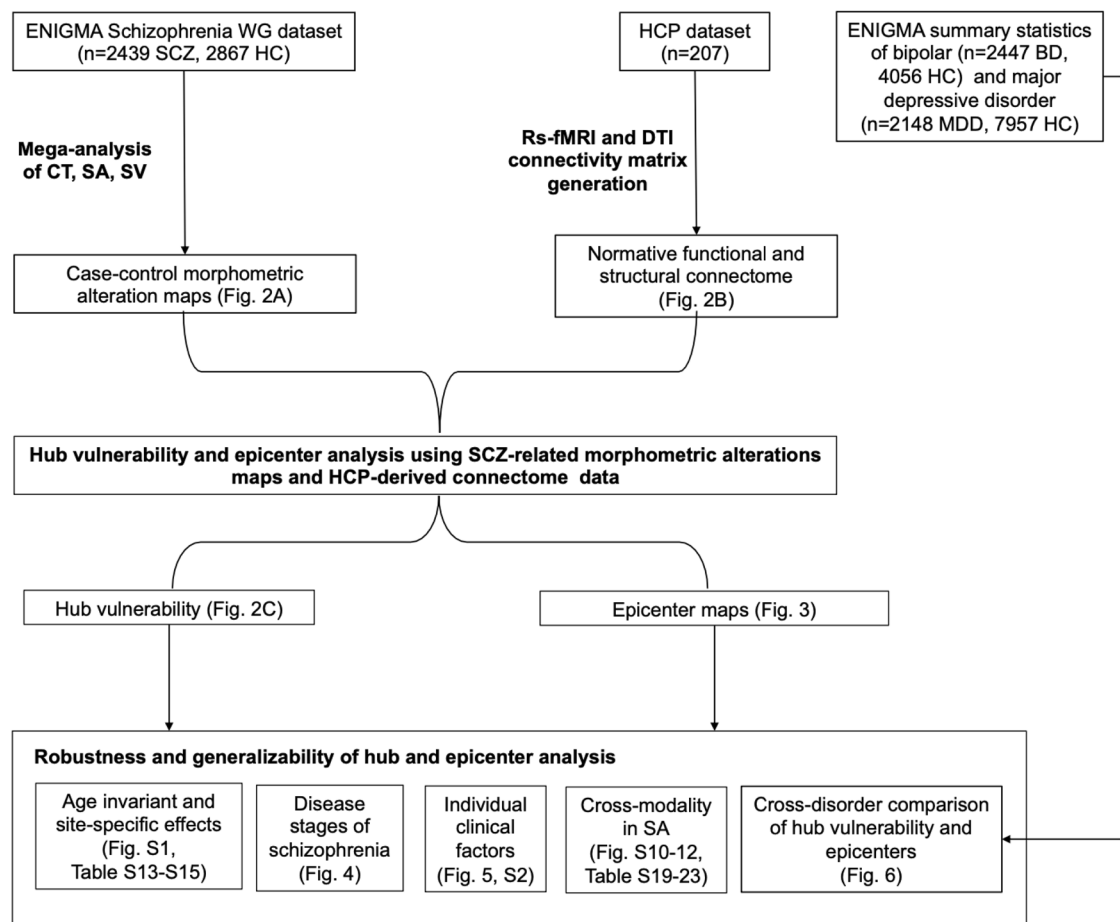


Fig. 1 Flowchart of multi-source data integration and analysis steps. BD bipolar disorder, HC healthy controls, HCP Human Connectome Project, MDD major depressive disorder; SA surface area, SCZ schizophrenia, SV subcortical volume; WG Working Group.

ENIGMA-Schizophrenia dataset. Functional and structural 68×68 connectivity matrices were generated following previous work and are described in detail in the Supplement (See supplementary methods). Within these connectivity matrices, each region's row or column corresponds to a 68×1 or 1×68 vector respectively that reflects the connectivity profile of a given region with all other brain regions.

Hub vulnerability model

To test the hub vulnerability hypothesis, i.e., that nodes with higher normative network centrality (established based on an independent sample of healthy individuals of the HCP) would display higher levels of disease-specific morphometric alterations in SCZ, we performed spatial correlations between the cortical and subcortical SCZ-related morphometric profile and normative weighted degree centrality maps (Fig. 2A, B). Weighted degree centrality was defined by the sum of all weighted cortico-cortical and subcortico-cortical connections for every region and used to identify structural and functional hub regions. Regions with a higher weighted degree centrality are denoted as hubs, compared to regions with relatively lower weighted degree centrality. To mitigate potential bias from selecting an arbitrary threshold and inadvertently excluding valuable information, the analyses were conducted on unthresholded connectivity matrices. Since correlations between brain maps are known to be inflated due to spatial autocorrelation [53, 54] we generated a null distribution using 10,000 rotated maps based on the spin permutation test [32]. In the case of the subcortical map, we used a similar approach, with the exception that subcortical labels were randomly shuffled as opposed to being projected onto spheres, such as in the spin test procedure [26]. Finally, we aimed to identify those cortical hub regions which are most strongly affected by cortical thickness alterations in SCZ. Therefore, we ranked each region based on their degree centrality as well as based on the magnitude of cortical thickness reduction (t-values). We then compared the ranking of both lists and reported the upper 10%

regions that have high degree centrality as well as a high magnitude of cortical thickness reduction in SCZ.

Mapping disease epicenters

To identify disorder-specific cortical and subcortical epicenters, we spatially correlated every region's healthy functional and structural cortical connectivity profile to the whole-brain patterns of cortical alterations in SCZ (Fig. 3A) [11, 26, 32]. We repeated this approach systematically for each parcellated region and for functional and structural cortical connectivity separately. Statistical significance of spatial similarity between an individual brain region's functional and structural connectivity profile and schizophrenia-related cortical alterations was determined through correlation analyses correcting for spatial autocorrelation with permutation testing as described above. Regions were ranked in descending order based on the strength of their correlation coefficients, with the highest-ranked regions being considered the most significant disease epicenters. A region can be considered an epicenter regardless of its cortical alteration magnitude (t-value of case-control differences), as long as it is strongly connected to other regions with high cortical alteration (higher t-value) and weakly connected to regions with low cortical alteration (lower t-value). It is therefore important to note that epicenters are not necessarily hub regions themselves but may instead be regions directly connected to hubs, so called 'feeder-nodes' [26, 55, 56]. In this definition, epicenters might better represent such 'feeder nodes' – nodes that link peripheral nodes directly to hubs. To account for multiple testing ($n = 68$ for cortical regions and $n = 14$ for subcortical regions), epicenters were only considered significant if spin-test p -values (p_{spin}) survived Bonferroni correction ($p < 0.05$).

Robustness and generalizability analyses

To assess the robustness and generalizability of our mega-analytic findings, we applied a series of sensitivity analyses contextualizing the effects of

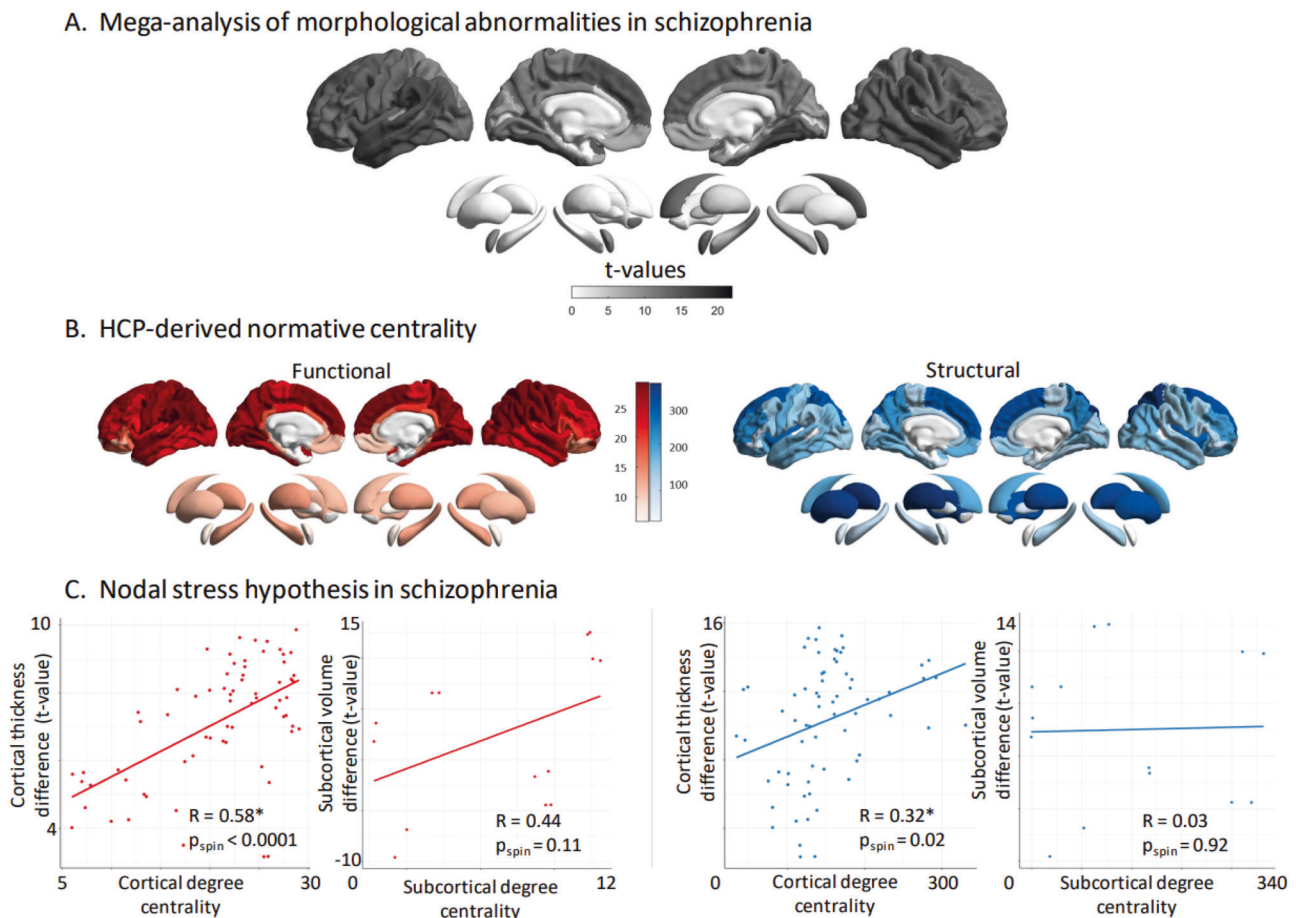


Fig. 2 Hub vulnerability mapping. **A** Unthresholded t -maps of cortical thickness and subcortical volume deficiencies in SCZ ($n = 2439$), compared to HCP ($n = 2867$). **B** Normative functional and structural network organization, derived from the HCP dataset, was used to identify hubs (i.e., regions with greater degree centrality). **C** Correlation of gray matter morphological alterations with node-level functional (left) and structural (right) maps of degree centrality. In SCZ, regions with high functional or structural centrality are significantly more likely to display morphological alterations in the cortex. Subcortical functional subcortico-cortical degree centrality showed a moderate non-significant correlation with morphometric alterations, while no correlation was observed for structural subcortico-cortical degree centrality. HCP healthy control participants, SCZ schizophrenia.

different model parameters, age discrepancy, sites, disease stages, and individual clinical factors. The stability of the hub vulnerability model was tested using several other graph-based nodal metrics including betweenness, eigenvector and closeness centrality. Next, to account for age discrepancy in the ENIGMA SCZ and the HCP dataset, all analyses were repeated in age-matched subgroups of ENIGMA SCZ samples. To evaluate robustness and compare our multisite mega-analytic findings with potential site-specific effects, we repeated the hub vulnerability and disease epicenter analyses across each site. For details, see supplementary methods and results.

Hub vulnerability and epicenters across different stages of SCZ

In a next step, we examined whether the associations between network features and structural alterations can be generalized or vary between different disease stages of SCZ. To this end, we investigated extreme ends of early and late disease stages that differ from the mean duration of illness (DURILL) of 11.6 (SD = 7.0) years of the total sample ($n = 2439$) included in the main analysis. The following subgroups were defined based on available data time of scanning: first-episode psychosis (≤ 1 month of DURILL, $n = 214$, mean age = 25 (15–50)), early course (> 1 month but < 2 years DURILL, $n = 503$, mean age = 27 (15–72)) and late chronic disease stage (> 20 years DURILL, $n = 457$, mean age = 40 (35–77)). The hub vulnerability and epicenter models were re-computed for each disease stage and compared accordingly. We investigated divergent (unique) epicenters, defined as those significant in only one of the three disease stages, and convergent (shared) epicenters, defined as

those significant in all three disease stages (spin-test adjusted p -value, $p_{\text{spin}} < 0.05$).

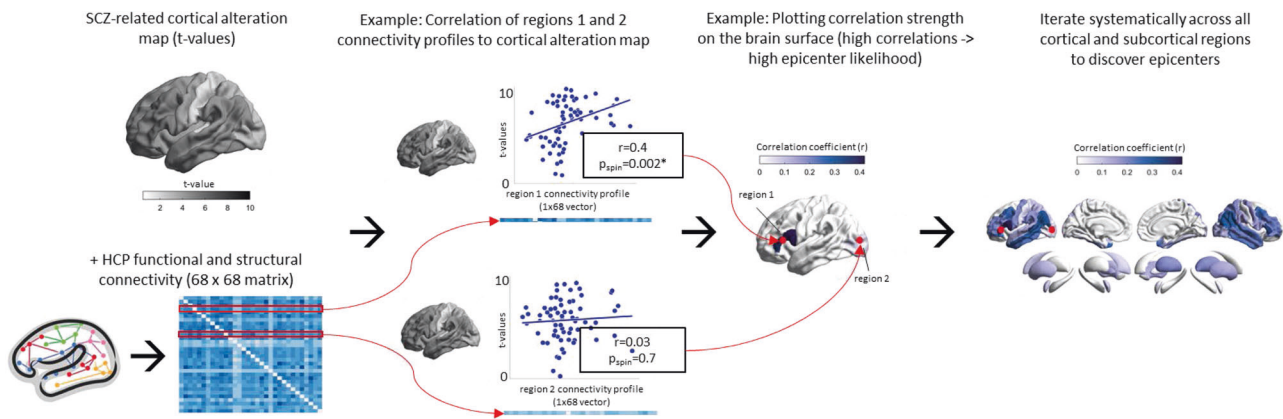
Subject-level cortical abnormality modeling

We next examined whether our network-based models can be translated to individual schizophrenia patients' data and how they are influenced by individual clinical factors. Batch-corrected cortical thickness data in patients were first adjusted for age and sex and subsequently z-scored relative to healthy controls to generate individualized cortical abnormality z-score maps. To test the hub vulnerability hypothesis, we correlated the derived patient-specific cortical abnormality z-score maps with the normative functional and structural centrality metrics (derived from HCP; Fig. 2B). The derived patient-specific correlation coefficients describe the individual scores of hub vulnerability. Subsequently, we determined each patient's structural and functional disease epicenters by identifying brain regions whose healthy connectivity profiles were significantly correlated with the patient's brain abnormality map. Having established both network-based models in subject-level data (see results below), we next examined the association between clinical factors and patient's hub vulnerability and epicenters respectively. To this end, we correlated the subject-level hub vulnerability scores and the most relevant epicenters with antipsychotic medication, duration of illness and symptom severity (measured with the PANSS). For details, see supplementary methods.

Cross-disorder comparison with ENIGMA BD and MDD

Finally, we tested whether the associations between network modeling features and brain morphometric alterations are specific for SCZ, or reflect a

A. Disease epicenter mapping approach



B. Epicenter mapping of schizophrenia

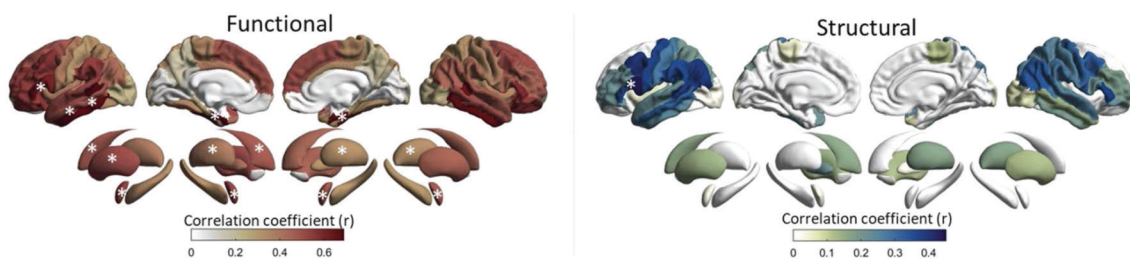


Fig. 3 Disease epicenters. **A** Disease epicenter mapping schematic for cortico-cortical connectivity: To discover epicenters of SCZ, the SCZ-related cortical alteration t-value vector (1×68) from our mega-analysis, was iteratively correlated with each region-specific cortico-cortical connectivity vector (1×68), derived from the HCP functional and structural connectivity matrices (68×68). In the example we showcase the procedure for two theoretical cortical regions with different magnitudes of correlations between each region's cortico-cortical connectivity vector and the SCZ-specific t-value map. Regions whose connectivity vectors are highly correlated with SCZ-specific cortical alteration patterns (t-values) are likely epicenters of SCZ (Region 1). Regions whose connectivity vectors are weakly correlated with the SCZ-specific cortical alteration patterns (t-values) are unlikely epicenters of SCZ (Region 2). We systematically repeated this analysis across all cortical and subcortical regions for both functional and structural connectivity. The resulting correlation values of each region were plotted on the surface to generate epicenter maps that display the epicenter likelihood of each region. **B** Correlation coefficient maps depicting the strength of association between the normative region-based functional (left) and structural (right) connectivity and the SCZ-specific morphological alteration maps. Disease epicenters are regions that are more strongly connected to regions with more pronounced morphometric alterations - and, inversely, are more weakly connected with regions with less pronounced alterations. Asterisks denote the top five significant epicenters. Top-5 functional epicenters, cortical: entorhinal cortex (L + R), banks of superior temporal sulcus (L), inferior temporal gyrus (L); subcortical: amygdala (L + R), putamen (L + R), caudate (L). Top-5 structural epicenters, cortical: pars opercularis of inferior frontal gyrus (L); subcortical: none.

shared signature across other psychiatric disorders. Summary statistics from the latest cortical morphometry meta-analyses of case-control differences in BD and MDD including, in total, 4595 patients and 12,013 controls were derived from the ENIGMA Toolbox [32]. We applied our hub vulnerability and epicenter analyses to the regional Cohen's d values for BD and MDD. We then compared these results, derived from meta-analytic data of BD and MDD, with our previously detailed findings for SCZ, which were obtained from our mega-analysis using subject-level SCZ and HC data. To analyze the overlap between the disease-specific epicenter maps of SCZ, BD, and MDD, we compared the magnitude to which a region serves as an epicenter for a specific disease, as captured by the Pearson's correlation coefficient r , to the corresponding r magnitude for the other two diseases. This was achieved by pairwise comparisons of the correlation coefficient of the normative connectivity profile with pairs of disorder morphological alteration patterns. The differences between correlation coefficients were compared for statistical significance with an r -to- z transform, using R package *cocor* and Zou's CIs. Since low absolute differences would confirm the null hypothesis, we report the lowest absolute difference and corresponding CIs in the 3-way comparison (SCZ-BD-MDD).

Cross-modality generalizability of hub vulnerability and epicenter models

Both cortical thickness and surface area show high heritability and similar brain-wide alteration patterns in schizophrenia but are characterized by

distinct genetic underpinnings [57, 58]. Though the focus of our work was on cortical thickness, we also applied our hub and epicenter also to schizophrenia-related surface area alterations to test whether associations with brain network mechanisms are shared or distinct across both cortical modalities. To this end, we first used linear models controlling for age and sex across our entire mega-analytic sample ($n = 2439$ SCZ, $n = 2867$ HC) to generate case-control difference maps, following our cortical thickness analysis and as described in van Erp et al. [5]. We then systematically repeated the hub vulnerability and epicenter analysis using the group-level surface alteration t-maps, and performed subject-level analysis using subject-specific z-maps of surface area alterations. For details, see supplementary methods.

RESULTS

Hub vulnerability and epicenters of structural alteration in SCZ

Using a mega-analytic approach, we observed widespread cortico-subcortical morphological alteration patterns in people with SCZ relative to HC, closely mirroring the cortical and subcortical meta-analytic case-control maps previously reported [5, 6]. Specifically, patients with SCZ showed strongest cortical thickness reduction in fronto-temporal regions including the bilateral supramarginal,

temporal, and fusiform gyri, the bilateral insula, and frontal regions including the bilateral superior frontal as well as the bilateral caudal middle frontal gyri (all t -values > 11 , $FDR\ p < 2.2e-16$, Fig. 2A, Table S5). In addition, people with SCZ showed strongest volume reductions in the bilateral hippocampus followed by bilateral thalamus, and bilateral amygdala (all t -values > 6 , $FDR\ p < 1e-11$; Fig. 2A, Table S6).

Functional and structural degree centrality predict regional susceptibility

To test the hub vulnerability hypothesis in SCZ, we compared the spatial patterns of normative nodal degree centrality (Fig. 2B) and SCZ-related morphological alterations (Fig. 2A). We found that cortical thickness reductions in SCZ were more strongly pronounced in functional ($r = 0.58$, $p_{\text{spin}} < 0.0001$), as well as structural ($r = 0.32$, $p_{\text{spin}} = 0.01$) cortico-cortical hubs compared to non-hub regions (Fig. 1C). In other words, functional and structural degree centrality predicted susceptibility to SCZ-related cortical thickness alterations. Lower subcortical volume showed non-significant associations with functional subcortico-cortical hubs ($r = 0.44$, $p_{\text{spin}} = 0.11$), while no relationship was observed between subcortical volume abnormalities and structural subcortico-cortical hubs ($r = 0.03$, $p_{\text{spin}} = 0.92$; Fig. 2C). Robustness of the observed hub vulnerability in SCZ was confirmed using different centrality metrics including eigenvector, betweenness and closeness centralities (Tables S10 and 11). We finally tested which cortical hub regions (highest degree centrality) also showed the strongest cortical thickness reduction in SCZ. (highest t -value). Functional hubs with the most strongly cortical thickness reduction in SCZ included the bilateral supramarginal, bilateral inferior parietal, left superior temporal, superior frontal, and precentral gyrus. Structural hubs with the strongest cortical thickness reduction in SCZ included the bilateral superior frontal, left superior and middle temporal, right insula and left inferior parietal gyrus.

Disease epicenters of schizophrenia

Having identified that cortico-cortical hubs are more susceptible to cortical alterations in SCZ, we next examined whether SCZ-related cortical thickness alterations are reflected in the connectivity profile of one or more brain regions. This would indicate that these regions likely serve as network-level epicenters of the disease. We systematically compared the functional and structural connectivity profile of each cortical region to whole-brain patterns of cortical alterations in SCZ (Fig. 3A). This approach identified several temporo-paralimbic regions - including the entorhinal cortices, banks of superior temporal sulci, inferior temporal, and additionally frontal gyri (bilateral *pars triangularis*, left *pars opercularis*) - as the strongest functional and structural epicenters (all $p_{\text{spin}} < 0.05$; Table S7, Fig. 2B). In the subcortex, the bilateral amygdala, caudate, putamen and the left pallidum emerged as functional epicenters (all $p_{\text{spin}} < 0.05$; Table S8, Fig. 3B), whereby no structural subcortical epicenters were identified. Thus, our results confirm the involvement of several significant cortical and subcortical epicenters of SCZ-related cortical alteration pattern instead of one or few specific epicenters. Overall, highest-ranked disease epicenters were not themselves hub regions, but were rather feeder nodes (nodes that are directly connected to hub regions), ranking on average (median) at the 40th percentile of nodal centrality distribution.

Robustness and generalizability of hub and epicenter analyses age-matched and site-specific confirmation analyses

To show the robustness of our findings to the mean age group discrepancy of the multisite ENIGMA SCZ and HC sample, and the HCP sample, we repeated the analysis with subsamples of the ENIGMA SCZ matched to the mean age of the HCP sample. Hub vulnerability and disease epicenter models revealed virtually the

same results compared to the non-age-matched total ENIGMA SCZ sample (see supplementary results). These findings suggest that the network effects remain stable across age-matched and age-divergent morphological alteration patterns of the ENIGMA SCZ sample. We next examined the reproducibility of our multisite mega-analytic analyses across each participating site. Overall, the SCZ-related morphological alteration patterns were consistent across sites and showed high agreement with that obtained from the multisite mega-analysis (Fig. S1A, Table S13, supplementary results). In line with the mega-analytic findings, site-specific hub vulnerability analysis, revealed highest stability for the association between SCZ-related cortical alteration and functional cortico-cortical degree centrality (Table S14, supplementary results). As observed in the multisite findings, site-specific epicenters were most often identified in temporo-paralimbic extending to frontal brain regions (Fig. S1B), with a high degree of overlap of the site-specific epicenters maps with the ones derived from the multisite aggregation (Table S15, supplementary results).

Hub vulnerability and epicenter mapping across different disease stages

Building on the significant associations of functional and structural degree centrality and cortical alterations across the complete sample, we next asked how this association might relate to first-episode (< 1 month), early (< 2 years) and late (> 20 years) stages of SCZ. We found that both functional and structural degree centrality correlated with thinner cortex in individuals with first-episode ($r_{\text{func}} = 0.35$, $p_{\text{spin}} = 0.01$, $r_{\text{struc}} = 0.28$, $p_{\text{spin}} = 0.04$), early disease stage ($r_{\text{func}} = 0.37$, $p_{\text{spin}} = 0.04$, $r_{\text{struc}} = 0.24$, $p_{\text{spin}} = 0.09$), and late chronic disease stages ($r_{\text{func}} = 0.44$, $p_{\text{spin}} = 0.003$, $r_{\text{struc}} = 0.28$, $p_{\text{spin}} = 0.04$) (Fig. 4A). In other words, across all disease stages, cortical alterations were significantly greater in cortico-cortical hubs compared to non-hub regions. Epicenter mapping of cortical alterations across disease stages revealed unique occipital-parietal epicenters in first-episode psychosis and additional unique temporo-frontal epicenters in early stages, while no unique epicenters were found in chronic stages (Fig. 4B and Table S9). Across all disease stages, convergent functional and structural epicenters were circumscribed across transmodal areas including parietal, temporal and frontal regions (Fig. 3B). Overall, these findings suggest localized unique epicenters for first-episode psychosis and early stages and transmodal epicenters that are shared across first-episode to chronic disease course.

Subject-level cortical abnormality modeling

We next assessed whether our network-based susceptibility models also relate to brain abnormality patterns in individual patients. Although the individual subject-level data displayed overall lower sensitivity, due to the increased heterogeneity in cortical abnormality patterns, the results closely mirrored our multisite hub vulnerability and epicenter analyses (Fig. S2). We observed similar associations between patient-specific cortical abnormality maps and functional as well as structural cortico-cortical hubs (Fig. S2A). Similarly, significant epicenters were consistently observed in individual patients with temporo-paralimbic regions emerging as the most frequent epicenters (Fig. S2B). Individual level of hub vulnerability indicated by subject-level higher positive correlation coefficients was consistently associated with PANSS general symptom score ($r_{\text{func}} = 0.21$, $p_{\text{Bonf}} < 0.0001$, $r_{\text{struc}} = 0.13$, $p_{\text{Bonf}} = 0.01$, $df = 383$) and PANSS total score ($r_{\text{func}} = 0.10$, $p_{\text{Bonf}} = 0.001$, $r_{\text{struc}} = 0.09$, $p_{\text{Bonf}} = 0.004$, $df = 1039$) (Fig. 5A, B and Table S16). No significant association was observed with either positive symptoms, negative symptoms or antipsychotic medication. Correlating the individual epicenters with clinical scores we found significant positive correlations between PANSS general symptom scores and higher epicenter likelihood of sensory-motor areas extending to the cingulate gyrus and insula (all $r > 0.18$, $p_{\text{Bonf}} < 0.05$, Fig. 5C, Table S17). For the

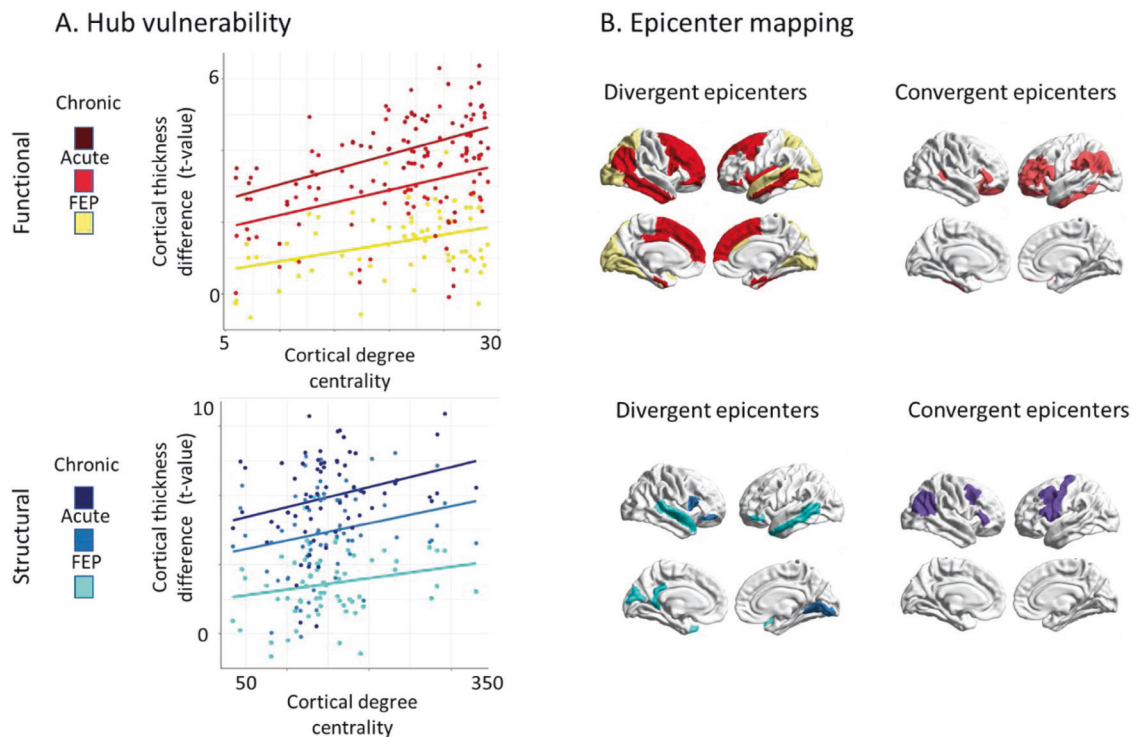


Fig. 4 Disease stage comparison of network modeling. **A** Correlation of cortical thickness abnormality in SCZ to node-level functional (upper) and structural (lower) maps of degree centrality (all $r > 0.23$, $p_{\text{spin}} < 0.05$). Color code indicates first-episode, early disease stage, and chronic disease stage from brighter to darker colors. **B** SCZ epicenter mapping (for details, see Fig. 2). Divergent (unique) epicenters are only significant in one of three disease stages with color indicating the corresponding disease stage. Convergent epicenters are significant in all three disease stages ($p_{\text{spin}} < 0.05$). Subgroups of disease stages are defined by duration of illness: first-episode psychosis (<1 month); early disease stage (>1 month but <2 years); chronic disease stage (>20 years). FEP First episode psychosis.

PANSS total score, significant associations were observed for bilateral somatosensory and motor cortices extending to supra-marginal gyrus (all $r > 0.11$, $p_{\text{Bonf}} < 0.05$, Fig. 5D, Tables S17 and S18). None of the other epicenters were significantly associated with the clinical scores tested (Tables S17 and S18). Robustness of these results were confirmed by running 100 permutations with 80% of the sample each time without resampling. For details, see supplementary results, Figs. S3–S8.

Cross-disorder comparison of hub vulnerability and epicenter mapping

Last, we wished to explore whether our network models are specific to SCZ or rather reflect transdiagnostic features along the schizophrenia-affective disorder spectrum; we applied both network-based susceptibility models to meta-analytic cortical maps of BD and MDD. The hub vulnerability model revealed that cortical thickness alterations in BD were correlated with cortico-cortical hubs ($r_{\text{struc}} = 0.35$, $p_{\text{spin}} = 0.01$; $r_{\text{func}} = 0.32$, $p_{\text{spin}} = 0.07$) as well as marginally with functional subcortico-cortical hubs ($r_{\text{func}} = 0.52$, $p_{\text{spin}} = 0.06$). No associations were found in MDD (all $p_{\text{spin}} > 0.05$, Fig. 6A). In BD, epicenter modeling identified functional and structural disease epicenters predominantly in the frontal cortices specifically, the bilateral orbitofrontal cortex, the middle frontal gyrus, and the left inferior frontal gyrus (all $p_{\text{spin}} < 0.05$, Fig. 6B). By contrast, no significant cortical epicenters were observed in MDD (all $p_{\text{spin}} > 0.05$, Fig. 6B). In the subcortex, the caudate nucleus emerged as the only functional and structural epicenter in BD, and the nucleus accumbens as sole structural epicenter in MDD (all $p_{\text{spin}} < 0.05$, Fig. 6b). Correlating the epicenter maps of SCZ and BD revealed a significant overlap both cortically ($r_{\text{func}} = 0.88$, $p_{\text{spin}} < 0.05$, $r_{\text{struc}} = 0.74$, $p_{\text{spin}} < 0.05$) and to a lesser extent subcortically ($r_{\text{func}} = 0.63$, $p = 0.007$, $r_{\text{struc}} = 0.41$, $p = 0.07$, Fig. 6C). In the cerebral cortex the following regions emerged as unique

epicenters for SCZ; banks of the superior temporal sulcus ($\text{diff}_R = 0.29$, $\text{CI}_R: 0.15\text{--}0.47$; $\text{diff}_L = 0.28$, $\text{CI}_L: 0.16\text{--}0.45$), the superior temporal gyrus ($\text{diff}_R = 0.33$, $\text{CI}_R: 0.18\text{--}0.49$; $\text{diff}_L = 0.33$, $\text{CI}_L: 0.19\text{--}0.49$), the supramarginal gyrus ($\text{diff}_R = 0.24$, $\text{CI}_R: 0.09\text{--}0.40$; $\text{diff}_L = 0.21$, $\text{CI}_L: 0.07\text{--}0.37$), the right entorhinal cortex ($\text{diff} = 0.24$, $\text{CI}: 0.11\text{--}0.40$), the right pars opercularis of inferior frontal gyrus ($\text{diff} = 0.16$, $\text{CI}: 0.01\text{--}0.31$). In the subcortex the bilateral amygdala ($\text{diff}_R = 0.35$, $\text{CI}_R: 0.20\text{--}0.50$; $\text{diff}_L = 0.29$, $\text{CI}_L: 0.20\text{--}0.50$), and putamen ($\text{diff}_R = 0.16$, $\text{CI}_R: 0.01\text{--}0.32$; $\text{diff}_L = 0.14$, $\text{CI}_L: 0.01\text{--}0.30$), emerged as unique epicenters (Fig. 6C). In BD the left caudate nucleus ($\text{diff} = 0.25$, $\text{CI}: 0.10\text{--}0.40$) and in MDD the nucleus accumbens bilaterally ($\text{diff}_R = 0.45$, $\text{CI}_R: 0.20\text{--}0.68$; $\text{diff}_L = 0.35$, $\text{CI}_L: 0.10\text{--}0.58$), were found to be disease-specific epicenters (Fig. 6C). Taken together, these findings indicate some convergence of the hub vulnerability and epicenter models in SCZ and BD, but not in MDD. For SCZ, specific temporo-limbic epicenters were identified, while distinct regions within the striatum emerged as unique epicenters for SCZ, BD, and MDD.

Cross-modality generalizability of hub vulnerability and epicenter models

We found widespread SCZ-related surface area alterations (Fig. S10A and Table S19) that were strongly correlated with the SCZ-related cortical thickness alteration maps ($r_{\text{mega}} = 0.60$, $p_{\text{spin}} = 0.0001$). The strongest surface area reductions in SCZ could be seen in the bilateral fusiform, superior and rostral middle frontal, superior and middle temporal and postcentral gyri (Fig. S10A and Table S19). Mirroring our cortical thickness findings, we observed a similar vulnerability to surface area reductions in functional ($r = 0.53$, $p_{\text{spin}} = 0.0004$) and at a trend-level in structural cortico-cortical hubs ($r = 0.22$, $p_{\text{spin}} = 0.08$; Fig. S10B). In line with the high overlap in hub vulnerability, epicenter findings for surface area alterations were very similar to those observed for cortical

Associations between subject-level network modelling features and clinical symptoms

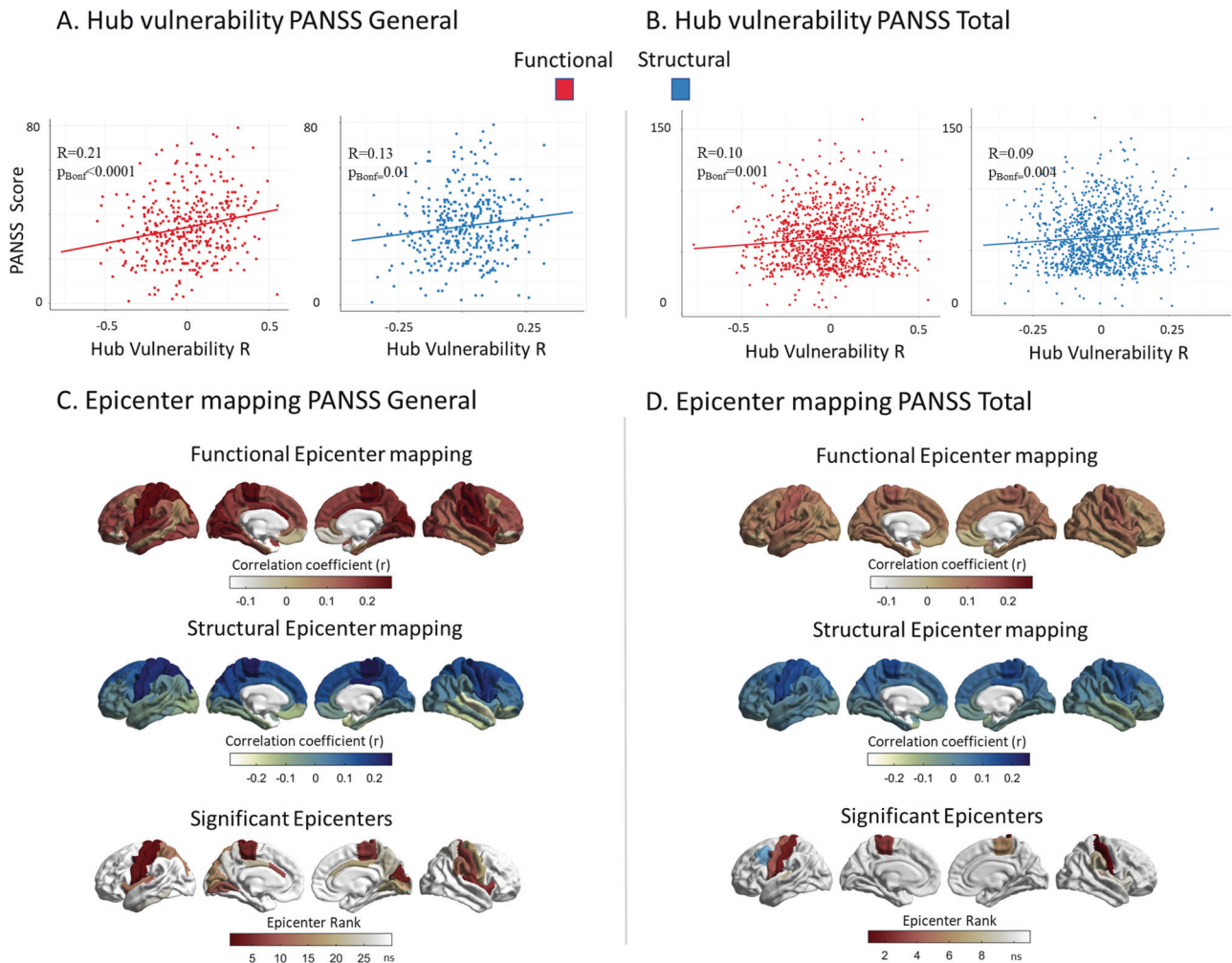


Fig. 5 Associations between subject-level network modelling and individual symptoms. **A** Correlation between subject-level functional (red) and structural (blue) hub vulnerability of cortical alterations and PANSS general scores ($r_{\text{func}} = 0.21$, $p_{\text{Bonf}} < 0.0001$, $r_{\text{struc}} = 0.13$, $p_{\text{Bonf}} = 0.01$). **B** Correlation between subject-level functional (red) and structural (blue) hub vulnerability of cortical alterations and PANSS total scores ($r_{\text{func}} = 0.10$, $p_{\text{Bonf}} = 0.001$, $r_{\text{struc}} = 0.09$, $p_{\text{Bonf}} = 0.004$). **C** Correlations between subject-level functional (red) and structural (blue) epicenter likelihood and PANSS general scores. Significant associations were only found for functional epicenters spanning from sensory-motor areas to cingulate gyrus and insula (all $r > 0.18$, $p_{\text{Bonf}} < 0.05$). **D** Correlations between subject-level functional (red) and structural (blue) epicenter likelihood and PANSS total scores. Significant associations were found for functional epicenters in the bilateral somatosensory and motor cortices extending to supramarginal gyrus (in blue) as the only structural epicenter (all $r > 0.11$, $p_{\text{Bonf}} < 0.05$).

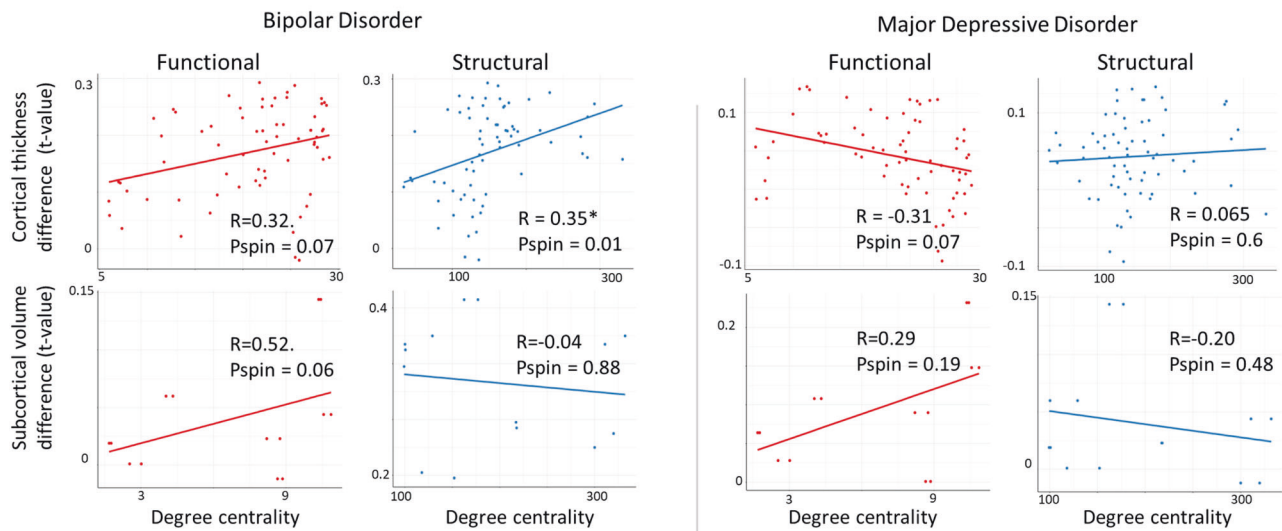
thickness alterations in SCZ with temporo-paralimbic and frontal regions emerging as the most significant epicenters (Fig S10C and Table S20). Finally, consistent with subject-level analysis of cortical thickness alterations, hub vulnerability and epicenters of subject-level surface area alterations significantly correlated with higher PANSS general and total scores (Fig. S11, Tables S21 and S22). Altogether, we observed significant overlap in hub susceptibility to cortical thickness and surface area alterations, along with consistent functional and structural epicenters for both alteration patterns in SCZ. For details see supplementary methods and results.

DISCUSSION

Our study (i) explored spatial associations between normative brain network architecture with morphometric alterations of SCZ and (ii) systematically assessed the robustness of these associations across different sites and inter-individual factors, leveraging

the largest multisite curated neuroimaging dataset to date. We found that cortical regions with higher cortical network centrality were, on average, more vulnerable to SCZ-related cortical alterations in all stages of the disease, while subcortical regions with high subcortico-cortical centrality were not. Examining the degree to which each brain region's network connections match the morphological alteration patterns of SCZ, we identified temporo-paralimbic regions extending to the inferior frontal gyrus as most probable disease epicenters. Robustness and generalizability of findings was shown using different centrality measures, ages, individual sites and subject-level data. Across disease stages, we observed unique epicenters for first-episode and early stages (<2 years), and shared transmodal epicenters across first-episode to chronic (>20 years) stages. Translating our network models to subject-level data, we found that individual hub vulnerability and sensory-motor as well as paralimbic epicenters were associated with overall symptom severity. We also found a significant overlap in hub susceptibility to cortical thickness and surface area

A. Nodal Stress Hypothesis



B. Disease epicenters



C. Transdiagnostic comparison of SCZ-BD-MDD



Fig. 6 Cross-disorder comparison of network modeling. **A** Correlation of disorder-related gray matter alterations to node-level functional (left) and structural (right) maps of degree centrality in BD and MDD. In BD, cortical regions with high structural centrality are significantly more likely to display higher morphological alterations; this trend is also observed for functional centrality. No such relationship is observed in MDD. **B** Correlation coefficient maps depicting strength of association between the normative region-based functional (top) and structural (bottom) connectivity and the BD- (left) and MDD-specific (right) morphological alteration maps. Asterisks denote the significant epicenters. Functional BD epicenters: pars orbitalis of inferior frontal gyrus (L), lateral orbitofrontal cortex (L), caudal middle frontal gyrus (L), inferior and middle temporal gyrus (L) cortically and the caudate nucleus (L) in the subcortex (func: bilateral, struc: left). Structural BD epicenters: pars opercularis (L) and pars triangularis (L) of inferior frontal gyrus, rostral middle frontal gyrus (L), middle temporal gyrus (L) cortically and the caudate nucleus (L), subcortically. In MDD, no functional epicenters were detected. Structural MDD epicenters: nucleus accumbens (R). **C** Transdiagnostic comparison of epicenters between SCZ, BD, and MDD. Disorder-specific epicenters which are only significant in one disorder are displayed on the left side. Shared epicenters between at least two disorders are shown on the right side. Please note, that shared epicenters were only found for SCZ and BD but not MDD: Bipolar disorder; MDD: Major depressive disorder; SCZ: Schizophrenia.

alterations in SCZ, with consistent epicenters indicating shared network mechanisms across both modalities. Finally, (iii) our cross-disorder comparison identified similar associations of cortical node centrality and cortical alterations in BD and SCZ, but not in MDD and SCZ. Additionally, we observed shared epicenters in SCZ and BD as well as unique epicenters for SCZ, BD, and MDD.

Overall, our work contributes to recognizing potential network mechanisms that underlie macroscale structural alterations and inter-individual variability in SCZ.

By combining our findings of SCZ-related cortical thickness alterations with normative brain connectivity information, we provide evidence for the hub vulnerability hypothesis in SCZ, i.e.,

the centrality of a cortical region in terms of its position in both the functional and the structural connectome is well correlated with the degree of its deformation. Wannan et al. [15] previously found that cortical deformation tends to cluster in regions with high normative structural covariance, and Shafiei et al. [14] have shown that the deformation of a cortical region correlates with the collective deformation of its network-neighboring regions, weighted by their respective connection strength. Prior studies further observed that network-central cortical nodes [59, 60] and the neuroanatomical tracts connecting them to other regions [61] are disproportionately affected in SCZ. Our findings extend these observations by identifying robust network organizations of SCZ-related alterations leveraging multiple levels of investigation including large-scale multisite, site-specific and subject-level analyses. We found that relationships between regional cortical alterations and regional node centrality were present in first-episode, early, and late disease stages. The cortical hubs that were most strongly affected by cortical alterations in SCZ included association regions in the parietal-temporal and frontal cortex. Individual hub vulnerability further correlated with clinical profiles of higher general symptom severity. These findings suggest that network organization may be guiding cortical alterations throughout the disease process of SCZ. The vulnerability of cortical hub regions to deficiencies in cortical thickness was originally examined in neurological disorders, including Parkinson's disease [23], Alzheimer's disease [20, 24], and other neurodegenerative conditions [25], as well as epilepsy [26]. Several biological mechanisms could lead to a marked susceptibility of hub regions. According to the stress-threshold model, centrally located neuronal populations are especially vulnerable to pathophysiological perturbations due to their higher neuronal activity and concomitant metabolic demands [60, 62]. In addition, hub regions are more likely to be part of the association cortices which, partly due to their prolonged window of developmental plasticity, have been shown to be especially vulnerable to developmental insults [63] - tying into the known neurodevelopmental aspects of SCZ pathogenesis [64].

Having identified the relevance of brain connectivity as a factor potentially contributing to morphological alteration in SCZ, we tested if the underlying connectivity of specific regions—or epicenters—constrains the SCZ-related cortical abnormality pattern. We identified temporo-paralimbic brain regions extending to the frontal gyrus as the most probable SCZ epicenters. Epicenters were not restricted to cortical regions with caudate/putamen and amygdala suggesting that cortical alterations might also be guided by subcortico-cortical connectivity; across all regions, the bilateral entorhinal cortex was most consistently the top-ranked epicenter for SCZ. These findings are in line with recent reports in first-episode psychosis [65] and chronic SCZ [14], while also mirroring epicenters of cortical atrophy in neurodegenerative disorders [30]. Our epicenter mapping across disease stages revealed unique occipital-parietal epicenters in first-episode psychosis and shared transmodal areas across disease course, confirming recent observations [65]. In addition, higher general symptom severity was associated with sensory-motor and paralimbic (cingulate, insula) epicenters suggesting that state-dependent clinical facets contribute to the development of individual epicenter profiles. The consistent involvement of temporo-paralimbic and frontal cortical regions, as potential epicenters across all disease stages, aligns with a series of studies implicating these regions in SCZ pathophysiology. Cortical thickness deficits in these regions emerge early in the disease [13, 66], are predictors for conversion [66] and are most strongly affected in chronic SCZ [5]. More generally, aggregation of epicenters in the temporo-paralimbic cortex could be explained by regional cellular and molecular features that promote brain plasticity, higher metabolic activity, making the paralimbic cortex more vulnerable to developmental disruptions [67, 68]. In the

network, the most significant epicenters were not the hubs themselves, but regions directly connected to these hubs. This implies that if morphometric alterations in SCZ spread in a network-like manner, these epicenters could act as initial gateways, influencing the hub nodes downstream through their connections. Epicenters would therefore play a critical role in the network-like progression of morphometric alterations in SCZ but in contrast to hubs, are not necessarily the most morphometrically altered regions.

Our cross-disorder comparison showed that the hub vulnerability models were also implicated in cortical alterations in BD, while cortical findings in MDD did not share this property. Epicenter mapping revealed some convergence of SCZ and BD along a temporo-limbic to frontal gradient, with an accentuation of unique epicenters in temporo-paralimbic regions in SCZ. In the subcortex disease-specific epicenters were the nucleus accumbens for MDD, the left caudate for BD, and bilateral putamen and amygdala for SCZ, while right caudate reflected a shared epicenter of SCZ and BD. This suggests that subcortico-cortical connectivity contributes to disease-specific cortical alterations that partly differentiate affective from psychotic processes along a ventral to dorsal striatal axis. Overall, the magnitude of observed cortical and subcortical disease epicenters was most pronounced in SCZ, intermediate in BD and relatively lacking in MDD, supporting evidence of overlapping neurobiological substrates across the SCZ-BD spectrum. Both the hub susceptibility, and epicenter models further revealed differential aspects of functional and structural connectivity to SCZ and BD-specific pathophysiology. Specifically, hubs and epicenters of SCZ and BD were more sensitive to detection with the functional and structural connectome, respectively. This finding could reflect differential sensitivity of diffusion MRI to long-range fiber bundles and that of resting-state functional MRI to polysynaptic cortical systems [69]. Disease epicenters in SCZ preferentially occurred in temporo-limbic regions, making them more amenable to functional identification. Conversely, disease epicenters in BD appeared more stable across modalities, with an accentuation in frontal regions, thus lending structural connectivity and increased sensitivity to their detection. Collectively, our findings suggest that shared network architecture features across SCZ and BD reflect the high biological proximity of these two disorders [5–8, 36, 40], while the unique epicenters suggest biological differences driving their differential clinical manifestations. By contrast, cortical abnormalities in MDD seem to lack a straightforward network influence - consistent with its more different structural brain signature compared to SCZ. However, given that we used meta-analytic data, the lack of findings in MDD could reflect heterogeneity in the study samples included, whereby specific cohorts with psychotic depression could potentially display more similarities to SCZ and BD.

Our analyses of hub vulnerability and epicenters yielded highly consistent results for alterations in both cortical thickness and surface area in SCZ, indicating shared network mechanisms. This is notable given their different genetic underpinnings [57, 58] and neurodevelopmental mechanisms [70], and suggests that these diverse cortical attributes intersect at network dysfunction in SCZ. The associations between hub vulnerability, epicenter mapping, and SCZ morphometric alterations may have several implications. Hub vulnerability and epicenters emerging early in the disease process might be further characterized by distinct alterations in genetic activity, macro- or micromorphology and/or activity. Testing this through longitudinal multi-omic studies across early neurodevelopment and SCZ could clarify the role of both hub vulnerability and epicenters in abnormal development. In SCZ network-spreading phenomenon might not be limited to neurodevelopmental processes but additionally could involve neurodegeneration later in life. In this regard, hub regions would be expected to be preferentially affected by accelerated aging and

disease progression of SCZ. Insights from neurological disorders with a similar pattern could be informative, in recognizing common upstream pathways to better understand potential neurodegenerative processes of cortical alterations in SCZ.

The present study is limited by its cross-sectional nature and cannot provide definitive answers pertaining to the temporal unfolding of the pathophysiological processes. With the increasing availability of longitudinal studies, future studies could more mechanistically test a “spreading” model, whereby the pathophysiology could originate from disease-specific epicenter regions, and then, through these, propagate to the vulnerable hub regions. Finally, although HCP is a current benchmark dataset to obtain normative structural and functional brain connectivity information, the use of individualized structural and functional connectivity information in patients might further improve the accuracy of network modeling of schizophrenia.

CONCLUSION

Leveraging a large-scale, multisite, neuroimaging dataset from the ENIGMA-Schizophrenia working group, this study provides robust evidence that brain network architecture is closely associated to cortical alterations in SCZ. Nodal centrality and temporo-paralimbic to frontal epicenters emerge as fundamental components of this relationship. Network organization may guide cortical alteration patterns throughout the disease stages of SCZ and contribute to individual patient-specific alteration profiles. SCZ showed some convergence in hub vulnerability and epicenters with BD, suggesting a partial overlap in network mechanism. Yet, the unique epicenters observed in SCZ indicate additional network-spreading processes specific to this condition. Overall, our work contributes to recognizing potentially common pathways to better understand macroscale structural alterations, and inter-individual variability in SCZ.

CODE AVAILABILITY

The network modeling code is publicly available from the ENIGMA toolbox [32] <https://enigma-toolbox.readthedocs.io/en/latest/>. All further statistical analyses were performed in R version 4.3.0. The respective packages are mentioned in the corresponding “Methods” sections.

REFERENCES

- Fornito A, Zalesky A, Breakspear M. The connectomics of brain disorders. *Nat Rev Neurosci*. 2015;16:159–72.
- Hansen JY, Shafiei G, Vogel JW, Smart K, Bearden CE, Hoogman M, et al. Local molecular and global connectomic contributions to cross-disorder cortical abnormalities. *Nat Commun*. 2022;13:1–17.
- Repple J, Gruber M, Mauritz M, de Lange SC, Winter NR, Opel N, et al. Shared and specific patterns of structural brain connectivity across affective and psychotic disorders. *Biol Psychiatry*. 2022;93:178–86.
- van den Heuvel MP, Sporns O. A cross-disorder connectome landscape of brain dysconnectivity. *Nat Rev Neurosci*. 2019;20:435–46.
- van Erp TGM, Walton E, Hibar DP, Schmaal L, Jiang W, Glahn DC, et al. Cortical brain abnormalities in 4474 individuals with schizophrenia and 5098 control subjects via the Enhancing Neuro Imaging Genetics Through Meta Analysis (ENIGMA) Consortium. *Biol Psychiatry*. 2018;84:644–54.
- Van Erp TGM, Hibar DP, Rasmussen JM, Glahn DC, Pearlson GD, Andreassen OA, et al. Subcortical brain volume abnormalities in 2028 individuals with schizophrenia and 2540 healthy controls via the ENIGMA consortium. *Mol Psychiatry*. 2016;21:547–53.
- Hibar DP, Westlye LT, Doan NT, Jahanshad N, Cheung JW, Ching CRK, et al. Cortical abnormalities in bipolar disorder: An MRI analysis of 6503 individuals from the ENIGMA Bipolar Disorder Working Group. *Mol Psychiatry*. 2018;23:932–42.
- Hibar DP, Westlye LT, Van Erp TGM, Rasmussen J, Leonardo CD, Faskowitz J, et al. Subcortical volumetric abnormalities in bipolar disorder. *Mol Psychiatry*. 2016;21:1710–6.
- Schmaal L, Hibar DP, Sämann PG, Hall GB, Baune BT, Jahanshad N, et al. Cortical abnormalities in adults and adolescents with major depression based on brain

- scans from 20 cohorts worldwide in the ENIGMA Major Depressive Disorder Working Group. *Mol Psychiatry*. 2017;22:900–9.
- Schmaal L, Veltman DJ, Van Erp TGM, Sämann PG, Frodl T, Jahanshad N, et al. Subcortical brain alterations in major depressive disorder: findings from the ENIGMA Major Depressive Disorder working group. *Mol Psychiatry*. 2016;21:806–12.
- Hettwer MD, Larivière S, Park BY, van den Heuvel OA, Schmaal L, Andreassen OA, et al. Coordinated cortical thickness alterations across six neurodevelopmental and psychiatric disorders. *Nat Commun*. 2022;13:1–14.
- Park BY, Kebets V, Larivière S, Hettwer MD, Paquola C, van Rooij D, et al. Multi-scale neural gradients reflect transdiagnostic effects of major psychiatric conditions on cortical morphology. *Commun Biol*. 2022;5:1–14.
- Cropley VL, Klauser P, Lenroot RK, Bruggemann J, Sundram S, Bousman C, et al. Accelerated gray and white matter deterioration with age in schizophrenia. *Am J Psychiatry*. 2017;174:286–95.
- Shafiei G, Markello RD, Makowski C, Talpalaru A, Kirschner M, Devenyi GA, et al. Spatial patterning of tissue volume loss in schizophrenia reflects brain network architecture. *Biol Psychiatry*. 2020;87:727–35.
- Wannan CMJ, Cropley VL, Chakravarty MM, Bousman C, Ganella EP, Bruggemann JM, et al. Evidence for network-based cortical thickness reductions in schizophrenia. *Am J Psychiatry*. 2019;176:552–63.
- Feeney DM, Baron JC. Diaschisis. *Stroke*. 1986;17:817–30.
- Finger S, Koehler PJ, Jagella C. The Monakow concept of diaschisis: origins and perspectives. *Arch Neurol*. 2004;61:283–8.
- Kirschner M, Shafiei G, Markello RD, Makowski C, Talpalaru A, Hodzic-Santor B, et al. Latent clinical-anatomical dimensions of schizophrenia. *Schizophr Bull*. 2020;46:1426–38.
- Hagmann P, Cammoun L, Gigandet X, Meuli R, Van Honey CJ, et al. Mapping the structural core of human cerebral cortex. *PLoS Biol*. 2008;6:e159.
- Buckner RL, Sepulcre J, Talukdar T, Krienen FM, Liu H, Hedden T, et al. Cortical hubs revealed by intrinsic functional connectivity: mapping, assessment of stability, and relation to Alzheimer's disease. *J Neurosci*. 2009;29:1860.
- Avena-Koenigsberger A, Misić B, Sporns O. Communication dynamics in complex brain networks. *Nat Rev Neurosci*. 2017;19:17–33.
- Zhou J, Gennatas ED, Kramer JH, Miller BL, Seeley WW. Predicting regional neurodegeneration from the healthy brain functional connectome. *Neuron*. 2012;73:1216.
- Zheng YQ, Zhang Y, Yau Y, Zeighami Y, Larcher K, Misić B, et al. Local vulnerability and global connectivity jointly shape neurodegenerative disease propagation. *PLoS Biol*. 2019;17:e3000495.
- de Haan W, Mott K, van Straaten ECW, Scheltens P, Stam CJ. Activity dependent degeneration explains hub vulnerability in Alzheimer's disease. *PLoS Comput Biol*. 2012;8:e1002582.
- Seeley WW, Crawford RK, Zhou J, Miller BL, Greicius MD. Neurodegenerative diseases target large-scale human brain networks. *Neuron*. 2009;62:42.
- Larivière S, Rodríguez-Cruces R, Royer J, Caligiuri ME, Gambardella A, Concha L, et al. Network-based atrophy modeling in the common epilepsies: a worldwide ENIGMA study. *Sci Adv*. 2020;6:6457–75.
- Shafiei G, Bazinet V, Dadar M, Manera AL, Collins DL, Dagher A, et al. Network structure and transcriptomic vulnerability shape atrophy in frontotemporal dementia. *Brain*. 2023;146:321–36.
- Zeighami Y, Ulla M, Iturria-Medina Y, Dadar M, Zhang Y, Larcher KMH, et al. Network structure of brain atrophy in de novo Parkinson's disease. *Elife*. 2015;4:e08440.
- Yau Y, Zeighami Y, Baker TE, Larcher K, Vainik U, Dadar M, et al. Network connectivity determines cortical thinning in early Parkinson's disease progression. *Nat Commun*. 2018;9:1–10.
- Vogel JW, Young AL, Oxtoby NP, Smith R, Ossenkoppele R, Strandberg OT, et al. Four distinct trajectories of tau deposition identified in Alzheimer's disease. *Nat Med*. 2021;27:871–81.
- Marek S, Tervo-Clemmens B, Calabro FJ, Montez DF, Kay BP, Hatoum AS, et al. Reproducible brain-wide association studies require thousands of individuals. *Nature*. 2022;603:654–60.
- Larivière S, Paquola C, Park BY, Royer J, Wang Y, Benkarim O, et al. The ENIGMA Toolbox: multiscale neural contextualization of multisite neuroimaging datasets. *Nat Methods*. 2021;18:698–700.
- Thompson PM, Jahanshad N, Ching CRK, Salminen LE, Thomopoulos SI, Bright J, et al. ENIGMA and global neuroscience: A decade of large-scale studies of the brain in health and disease across more than 40 countries. *Transl Psychiatry*. 2020;10:1–28.
- Elam JS, Glasser MF, Harms MP, Sotiropoulos SN, Andersson JLR, Burgess GC, et al. The Human Connectome Project: a retrospective. *Neuroimage*. 2021;244:118543.
- van Os J, Kapur S. Schizophrenia. *Lancet*. 2009;374:635–45.

36. Patel Y, Parker N, Shin J, Howard D, French L, Thomopoulos SI, et al. Virtual histology of cortical thickness and shared neurobiology in 6 psychiatric disorders. *JAMA Psychiatry*. 2021;78:47–63.
37. Opel N, Goltermann J, Hermesdorf M, Berger K, Baune BT, Dannlowski U. Cross-disorder analysis of brain structural abnormalities in six major psychiatric disorders: a secondary analysis of mega- and meta-analytical findings from the ENIGMA Consortium. *Biol Psychiatry*. 2020;88:678–86.
38. Lee PH, Anttila V, Won H, Feng YCA, Rosenthal J, Zhu Z, et al. Genomic relationships, novel loci, and pleiotropic mechanisms across eight psychiatric disorders. *Cell*. 2019;179:1469–1482.e11.
39. Radonjić N V, Hess JL, Rovira P, Andreassen O, Buitelaar JK, Ching CRK, et al. Structural brain imaging studies offer clues about the effects of the shared genetic etiology among neuropsychiatric disorders. *Mol Psychiatry*. 2021;26:2101–10.
40. Anttila V, Bulik-Sullivan B, Finucane HK, Walters RK, Bras J, Duncan L, et al. Analysis of shared heritability in common disorders of the brain. *Science*. 2018;360:eaap8757.
41. Ivleva EI, Clementz BA, Dutcher AM, Arnold SJM, Jeon-Slaughter H, Aslan S, et al. Brain structure biomarkers in the psychosis biotypes: findings from the bipolar-schizophrenia network for intermediate phenotypes. *Biol Psychiatry*. 2017;82:26–39.
42. Clementz BA, Sweeney JA, Hamm JP, Ivleva EI, Ethridge LE, Pearson GD, et al. Identification of distinct psychosis biotypes using brain-based biomarkers. *Am J Psychiatry*. 2016;173:373–84.
43. Fischl B. FreeSurfer. *NeuroImage*. 2012;62:774–81.
44. Fischl B, Salat DH, Busa E, Albert M, Dieterich M, Haselgrove C, et al. Whole brain segmentation: automated labeling of neuroanatomical structures in the human brain. *Neuron*. 2002;33:341–55.
45. Desikan RS, Ségonne F, Fischl B, Quinn BT, Dickerson BC, Blacker D, et al. An automated labeling system for subdividing the human cerebral cortex on MRI scans into gyral based regions of interest. *NeuroImage*. 2006;31:968–80.
46. Leek JT, Johnson WE, Parker HS, Jaffe AE, Storey JD, The SVA. package for removing batch effects and other unwanted variation in high-throughput experiments. *Bioinformatics*. 2012;28:882–3.
47. Fortin JP, Cullen N, Sheline YI, Taylor WD, Aselcioglu I, Cook PA, et al. Harmonization of cortical thickness measurements across scanners and sites. *NeuroImage*. 2018;167:104–20.
48. Worsley KJ, Taylor JE, Carbonell F, Chung MK, Duerden E, Bernhardt B, et al. SurfStat: A Matlab toolbox for the statistical analysis of univariate and multivariate surface and volumetric data using linear mixed effects models and random field theory. *NeuroImage*. 2009;47:S102.
49. Larivière S, Bayrak Ş, Vos de Wael R, Benkarim O, Herholz P, Rodriguez-Cruces R, et al. BrainStat: A toolbox for brain-wide statistics and multimodal feature associations. *NeuroImage*. 2023;266:119807.
50. Benjamini Y, Hochberg Y. Controlling the false discovery rate: a practical and powerful approach to multiple testing. *J R Stat Soc Ser B (Methodol)*. 1995;57:289–300.
51. Van Essen DC, Ugurbil K, Auerbach E, Barch D, Behrens TEJ, Bucholz R, et al. The Human Connectome Project: a data acquisition perspective. *NeuroImage*. 2012;62:2222.
52. Glasser MF, Sotiropoulos SN, Wilson JA, Coalson TS, Fischl B, Andersson JL, et al. The minimal preprocessing pipelines for the human connectome project. *NeuroImage*. 2013;80:105.
53. Alexander-Bloch AF, Shou H, Liu S, Satterthwaite TD, Glahn DC, Shinohara RT, et al. On testing for spatial correspondence between maps of human brain structure and function. *NeuroImage*. 2018;178:540.
54. Burt JB, Helmer M, Shinn M, Anticevic A, Murray JD. Generative modeling of brain maps with spatial autocorrelation. *NeuroImage*. 2020;220:117038.
55. van den Heuvel MP, Sporns O. An anatomical substrate for integration among functional networks in human cortex. *J Neurosci*. 2013;33:14489–14500.
56. Van Den Heuvel MP, Kahn RS, Goñi J, Sporns O. High-cost, high-capacity backbone for global brain communication. *Proc Natl Acad Sci USA*. 2012;109:11372–7.
57. Grasby KL, Jahanshad N, Painter JN, Colodro-Conde L, Bralten J, Hibar DP, et al. The genetic architecture of the human cerebral cortex. *Science*. 2020;367:eaay6690.
58. Grotzinger AD, Mallard TT, Liu Z, Seidlitz J, Ge T, Smoller JW. Multivariate genomic architecture of cortical thickness and surface area at multiple levels of analysis. *Nat Commun*. 2023;14:1–13.
59. Rubinov M, Bullmore E. Schizophrenia and abnormal brain network hubs. *Dialogues Clin Neurosci*. 2013;15:339.
60. Crossley NA, Mechelli A, Scott J, Carletti F, Fox PT, McGuire P, et al. The hubs of the human connectome are generally implicated in the anatomy of brain disorders. *Brain*. 2014;137:2382–95.
61. Klauser P, Baker ST, Cropley VL, Bousman C, Fornito A, Cocchi L, et al. White matter disruptions in schizophrenia are spatially widespread and topologically converge on brain network hubs. *Schizophr Bull*. 2017;43:425–35.
62. Saxena S, Caroni P. Selective neuronal vulnerability in neurodegenerative diseases: from stressor thresholds to degeneration. *Neuron*. 2011;71:35–48.
63. Sydnor VJ, Larsen B, Bassett DS, Alexander-Bloch A, Fair DA, Liston C, et al. Neurodevelopment of the association cortices: Patterns, mechanisms, and implications for psychopathology. *Neuron*. 2021;109:2820–46.
64. Fatemi SH, Folsom TD. The neurodevelopmental hypothesis of schizophrenia, revisited. *Schizophr Bull*. 2009;35:528–48.
65. Chopra S, Oldham S, Segal A, Holmes A, Sabarwal K, Orchard ER, et al. Network constraints on longitudinal grey matter changes in first episode psychosis. <https://doi.org/10.1101/2022.01.11.22268989>.
66. Jalbrzikowski M, Hayes RA, Wood SJ, Nordholm D, Zhou JH, Fusar-Poli P, et al. Association of structural magnetic resonance imaging measures with psychosis onset in individuals at clinical high risk for developing psychosis: an ENIGMA Working Group Mega-analysis. *JAMA Psychiatry*. 2021;78:753–66.
67. Garcia-Cabezas MA, Zikopoulos B, Barbas H. The Structural Model: a theory linking connections, plasticity, pathology, development and evolution of the cerebral cortex. *Brain Struct Funct*. 2019;224:985–1008.
68. Park BY, Bethlehem RAI, Paquola C, Larivière S, Rodriguez-Cruces R, Vos de Wael R, et al. An expanding manifold in transmodal regions characterizes adolescent reconfiguration of structural connectome organization. *Elife*. 2021;10:e64694.
69. Honey CJ, Sporns O, Cammoun L, Gigandet X, Thiran JP, Meuli R, et al. Predicting human resting-state functional connectivity from structural connectivity. *Proc Natl Acad Sci USA*. 2009;106:2035–40.
70. Rakic P. Specification of cerebral cortical areas. *Science*. 1988;241:170–6.

ACKNOWLEDGEMENTS

See Supplement.

AUTHOR CONTRIBUTIONS

FG and MK had full access to all of the data in the study and take responsibility for the integrity of the data and the accuracy of the data analysis. MK and BB contributed equally to this work. Study concept and design: FG, SL, BB, MK, TGMvE, JAT, PTH. Acquisition, analysis, interpretation of data, and funding: FG, SL, DGI, ELH, PK, BMO, CL, CP, FAH, MJG, MJC, PTM, PER, PTO, RJS, SC, US, VCar, YQ, AKR, FSt, IN, KB, TK, RaG, RuG, TDS, AKa, EPC, JRa, PFC, RS, GS, AV, KS, BCF, DTG, SE, NC, DG, JRa, RL, UD, VCal, KRM, CD, ISR, SRS, AS, SB, AT, IL, CH, FSp, AP, DN, AU, DJS, FH, HST, AMDZ, CLJ, FI, EJ, SH, WO, PH, SK, ES, BMi, SV, PTH, TGMvE, JAT, MK. Statistical analysis: FG, SL, BB, MK. Drafting of the manuscript: FG, BB, MK. Critical revision of the manuscript for important intellectual content: FG, SL, DGI, ELH, PK, BMO, CL, CP, FAH, MJG, MJC, PTM, PER, PTO, RJS, SC, US, VCar, YQ, AKR, FSt, IN, KB, TK, RaG, RuG, TDS, AKa, EPC, JRa, PFC, RS, GS, AV, KS, BCF, DTG, SE, NC, DG, JRa, RL, UD, VCal, KRM, CD, ISR, SRS, AS, SB, AT, IL, CH, FSp, AP, DN, AU, DJS, FH, HST, AMDZ, CLJ, FI, EJ, SH, WO, PH, SK, ES, BMi, SV, PTH, TGMvE, JAT, BB, MK. All authors approved the contents of the paper.

FUNDING

Open access funding provided by University of Geneva.

COMPETING INTERESTS

The authors declare no competing interests.

ADDITIONAL INFORMATION

Supplementary information The online version contains supplementary material available at <https://doi.org/10.1038/s41380-024-02442-7>.

Correspondence and requests for materials should be addressed to Foivos Georgiadis or Matthias Kirschner.

Reprints and permission information is available at <http://www.nature.com/reprints>

Publisher's note Springer Nature remains neutral with regard to jurisdictional claims in published maps and institutional affiliations.



Open Access This article is licensed under a Creative Commons Attribution 4.0 International License, which permits use, sharing, adaptation, distribution and reproduction in any medium or format, as long as you give appropriate credit to the original author(s) and the source, provide a link to the Creative Commons licence, and indicate if changes were made. The images or other third party material in this article are included in the article's Creative Commons licence, unless indicated otherwise in a credit line to the material. If material is not included in the

article's Creative Commons licence and your intended use is not permitted by statutory regulation or exceeds the permitted use, you will need to obtain permission directly from the copyright holder. To view a copy of this licence, visit <http://creativecommons.org/licenses/by/4.0/>.

© The Author(s) 2024

¹Department of Psychiatry, Psychotherapy and Psychosomatics, Psychiatric Hospital University of Zurich, Zurich, Switzerland. ²McGill University, Montreal Neurological Institute, Montreal, QC, Canada. ³Department of Psychiatry, Harvard Medical School, Boston, MA, USA. ⁴Maryland Psychiatric Research Center, Department of Psychiatry, University of Maryland School of Medicine, Baltimore, MD, US. ⁵Queensland Brain Institute, The University of Queensland, St Lucia, QLD, Australia. ⁶School of Medicine and Public Health, University of Newcastle, Newcastle, NSW, USA. ⁷Melbourne Neuropsychiatry Centre, Department of Psychiatry, The University of Melbourne, Carlton South, VIC, Australia. ⁸School of Medicine and Public Health, University of Newcastle, Newcastle, NSW, Australia. ⁹School of Clinical Medicine, Discipline of Psychiatry and Mental Health, UNSW Sydney, Sydney, NSW, Australia. ¹⁰School of Biomedical Science and Pharmacy, University of Newcastle, Newcastle, NSW, Australia. ¹¹School of Psychological Sciences, University of Newcastle, Newcastle, NSW, Australia. ¹²School of Medicine and Public Health, College of Health, Medicine, and Wellbeing, The University of Newcastle, Callaghan, NSW, Australia. ¹³Faculty of Medicine, University of Queensland, St Lucia, QLD, Australia. ¹⁴Hunter Medical Research Institute, Newcastle, NSW, Australia. ¹⁵School of Clinical Medicine, Discipline of Psychiatry, UNSW Sydney, Sydney, NSW, Australia. ¹⁶University Hospital Bonn, Department of Psychiatry and Psychotherapy, Venusberg-Campus 1, 53127 Bonn, Germany. ¹⁷Department of Psychiatry, University of Marburg, Rudolf Bultmann Str. 8, 35039 Marburg, Germany. ¹⁸Department of Psychiatry and Psychotherapy, Philipps-University Marburg, Marburg, Germany. ¹⁹University of Pennsylvania Perelman School of Medicine, Philadelphia, PA, USA. ²⁰FIDMAG Germanes Hospitalàries Research Foundation & CIBERSAM, ISCIII, Barcelona, Spain. ²¹Institut d'Investigacions Biomèdiques August Pi i Sunyer (IDIBAPS), Barcelona, Spain. ²²Santa Lucia Foundation IRCCS, Santa Lucia, Rome, Italy. ²³West Region, Institute of Mental Health, Singapore, Singapore. ²⁴Hospital Universitario Virgen del Rocío, IBIS-CSIC, Universidad de Sevilla, Seville, Spain. ²⁵Department of Radiology, Marqués de Valdecilla University Hospital, Valdecilla Biomedical Research Institute IDIVAL, Santander, Spain. ²⁶Division of Psychological & Social Medicine and Developmental Neurosciences, Technischen Universität Dresden, Faculty of Medicine, University Hospital C.G. Carus, Dresden, Germany. ²⁷Department of Psychiatry, Pontificia Universidad Católica de Chile, Santiago, Chile. ²⁸Institute for Translational Psychiatry, University of Münster, Münster, Germany. ²⁹Tri-Institutional Center for Translational Research in Neuroimaging and Data Science (TReNDS), Georgia State, Georgia Tech, Emory, Atlanta, GA, USA. ³⁰University of Minnesota Department of Psychology, Minneapolis, MN, USA. ³¹Minneapolis VA Health Care System, Minneapolis, MN, USA. ³²University of Minnesota Department of Psychiatry & Behavioral Sciences, Minneapolis, MN, USA. ³³University of Basel, Department of Psychiatry, Basel, Switzerland. ³⁴Department of Psychiatry, University of Lübeck, Lübeck, Germany. ³⁵Mental Health Research Center, Moscow, Russian Federation. ³⁶National Institute of Mental Health, Topolova 748, 250 67 Klecany, Czech Republic. ³⁷Department of Psychiatry and Human Behavior, University of California Irvine, Irvine, CA, USA. ³⁸Department of Pediatric Neurology, University of California Irvine, Irvine, CA, USA. ³⁹Department of child and adolescent psychiatry, TU Dresden, Dresden, Germany. ⁴⁰Department of Psychiatry and Mental Health, University of Cape Town, Cape Town, South Africa. ⁴¹Research Group in Psychiatry, Department of Psychiatry, School of Medicine, Universidad de Antioquia, Medellín, Colombia. ⁴²University of Naples, Department of Neuroscience, Naples, Italy. ⁴³Division of Adult Psychiatry, Department of Psychiatry, Geneva University Hospitals, Geneva, Switzerland. ⁴⁴Forschungszentrum Jülich, Jülich, Germany. ⁴⁵Max Planck Institute for Cognitive and Brain Sciences, Leipzig, Germany. ⁴⁶Imaging Genetics Center, Stevens Institute for Neuroimaging and Informatics, Keck School of Medicine, University of Southern California, Los Angeles, CA, USA. ⁴⁷Department of Psychiatry and Behavioral Health, the Ohio State University, Columbus, OH, USA. ⁴⁸These authors contributed equally: Boris Bernhardt, Matthias Kirschner. A list of authors and their affiliations appears at the end of the paper. ✉email: foivos.georgiadis@uzh.ch; matthias.kirschner@hcuge.ch

ENIGMA SCHIZOPHRENIA CONSORTIUM

Foivos Georgiadis¹✉, Sara Larivière², David Glahn³, L. Elliot Hong⁴, Peter Kochunov⁴, Bryan Mowry⁵, Carmel Loughland⁶, Christos Pantelis⁷, Frans A. Henskens⁸, Melissa J. Green⁹, Murray J. Cairns¹⁰, Patricia T. Michie¹¹, Paul E. Rasser¹², Stanley Catts¹³, Paul Tooney^{10,14}, Rodney J. Scott¹⁰, Ulrich Schall¹⁴, Vaughan Carr¹⁵, Yann Quidé¹⁵, Axel Krug¹⁶, Frederike Stein¹⁷, Igor Nenadić¹⁸, Katharina Brosch¹⁷, Tilo Kircher¹⁷, Raquel Gur¹⁹, Ruben Gur¹⁹, Theodore D. Satterthwaite¹⁹, Andriana Karuk²⁰, Edith Pomarol-Clotet²⁰, Joaquim Radua²¹, Paola Fuentes-Claramonte²⁰, Raymond Salvador²⁰, Gianfranco Spalletta²², Aristotle Voineskos¹⁰, Kang Sim²³, Benedicto Crespo-Facorro²⁴, Diana Tordesillas Gutiérrez²⁵, Stefan Ehrlich²⁶, Nicolas Crossley²⁷, Dominik Grotegerd²⁸, Jonathan Reppe²⁸, Rebekka Lencer²⁸, Udo Dannlowski²⁸, Vince Calhoun²⁹, Kelly Roes-Murdy²⁹, Caroline Demro^{30,31}, Ian S. Ramsay³², Scott R. Sponheim^{31,32}, Andre Schmidt³³, Stefan Borgwardt³⁴, Alexander Tomyshev³⁵, Irina Lebedeva³⁵, Cyril Höschl³⁶, Filip Spaniel³⁶, Adrian Preda³⁷, Dana Nguyen³⁸, Anne Uhlmann³⁹, Dan J. Stein⁴⁰, Fleur Howells⁴⁰, Henk S. Temmingh⁴⁰, Ana M. Diaz Zuluaga⁴¹, Carlos López Jaramillo⁴¹, Felice Iasevoli⁴², Ellen Ji⁴², Stephanie Homan¹, Wolfgang Omlor¹, Philipp Homan¹, Stefan Kaiser⁴³, Erich Seifritz¹, Bratislav Misic⁴⁴, Sofie L. Valk^{44,45}, Paul Thompson⁴⁶, Theo G. M. van Erp³⁷, Jessica A. Turner⁴⁷, Boris Bernhardt^{2,48} and Matthias Kirschner^{1,43,48}✉