

UCSF

UC San Francisco Previously Published Works

Title

Predicting cancer drug TARGETS - TreAtment Response Generalized Elastic-neT Signatures

Permalink

<https://escholarship.org/uc/item/6pz0t4jn>

Journal

npj Genomic Medicine, 6(1)

ISSN

2056-7944

Authors

Rydzewski, Nicholas R

Peterson, Erik

Lang, Joshua M

et al.

Publication Date

2021-09-01

DOI

10.1038/s41525-021-00239-z

Copyright Information

This work is made available under the terms of a Creative Commons Attribution License, available at <https://creativecommons.org/licenses/by/4.0/>

Peer reviewed

ARTICLE OPEN



Predicting cancer drug TARGETS - TreAtment Response Generalized Elastic-neT Signatures

Nicholas R. Rydzewski¹, Erik Peterson², Joshua M. Lang^{3,4}, Menggang Yu^{3,5}, S. Laura Chang⁶, Martin Sjöström⁶, Hamza Bakhtiar¹, Gefei Song¹, Kyle T. Helzer⁶, Matthew L. Bootsma¹, William S. Chen⁶, Raunak M. Shrestha⁶, Meng Zhang⁶, David A. Quigley^{7,8}, Rahul Aggarwal^{7,9}, Eric J. Small^{7,9}, Daniel R. Wahl², Felix Y. Feng^{6,7,9,10,12} and Shuang G. Zhao^{6,1,3,11,12}✉

We are now in an era of molecular medicine, where specific DNA alterations can be used to identify patients who will respond to specific drugs. However, there are only a handful of clinically used predictive biomarkers in oncology. Herein, we describe an approach utilizing in vitro DNA and RNA sequencing and drug response data to create TreAtment Response Generalized Elastic-neT Signatures (TARGETS). We trained TARGETS drug response models using Elastic-Net regression in the publicly available Genomics of Drug Sensitivity in Cancer (GDSC) database. Models were then validated on additional in-vitro data from the Cancer Cell Line Encyclopedia (CCLE), and on clinical samples from The Cancer Genome Atlas (TCGA) and Stand Up to Cancer/Prostate Cancer Foundation West Coast Prostate Cancer Dream Team (WCPT). First, we demonstrated that all TARGETS models successfully predicted treatment response in the separate in-vitro CCLE treatment response dataset. Next, we evaluated all FDA-approved biomarker-based cancer drug indications in TCGA and demonstrated that TARGETS predictions were concordant with established clinical indications. Finally, we performed independent clinical validation in the WCPT and found that the TARGETS AR signaling inhibitors (ARSI) signature successfully predicted clinical treatment response in metastatic castration-resistant prostate cancer with a statistically significant interaction between the TARGETS score and PSA response ($p = 0.0252$). TARGETS represents a pan-cancer, platform-independent approach to predict response to oncologic therapies and could be used as a tool to better select patients for existing therapies as well as identify new indications for testing in prospective clinical trials.

npj Genomic Medicine (2021)6:76; <https://doi.org/10.1038/s41525-021-00239-z>

INTRODUCTION

Treatment decisions for cancer patients have historically depended on the tumor location and histologic appearance. However, response is often heterogeneous within the same tumor type¹. Molecular diversity is fundamental to a cancer's ability to evade endogenous and exogenous tumor control strategies, and there is a great need to incorporate an understanding of this diversity into the management of all cancer patients. Advances in next-generation sequencing have ushered in a personalized treatment approach that can improve tumor control and decrease side effects compared to the traditional one-size-fits-all approach.

Multiple anti-neoplastic therapies have now been paired with predictive biomarkers for making treatment decisions. This approach has been particularly successful with targeted drug therapies. The first successful examples include Imatinib for chronic myelogenous leukemia patients with the BCR-ABL fusion² and Trastuzumab for HER2-positive breast cancer patients³. Since the approval of these agents 20 years ago, the FDA has approved dozens of different targeted therapies, with the number increasing rapidly every year. However, even among these targeted therapies and among patients who have a mutation known to confer increased sensitivity to the therapy, treatment outcomes can still be heterogeneous. For example, even among non-small cell lung cancer (NSCLC) patients with classic EGFR mutations, where exon 19 deletions and L858R exon 21 point mutations account for 90%

of EGFR mutations, response rates have ranged from 58 to 85% in phase II/III clinical trials evaluating anti-EGFR tyrosine kinase inhibitors (e.g., Erlotinib, Gefitinib, Afatinib, Osimertinib)^{4–11}.

A contributing factor to variability in treatment response is the complex and often compound nature of cancer gene alterations. Multiple mutations and gene expression differences likely modulate response, but many of the relevant changes are challenging to identify. We hypothesized that next-generation DNA and RNA sequencing techniques paired with modern computational modeling could identify gene signatures that would better capture this heterogeneity. Rather than relying on the presence or absence of a single genetic variant, we instead model treatment predictions based on a broad spectrum of genomic variant and expression data. To do this, we have leveraged an existing large-scale in-vitro database to train TreAtment Response Generalized Elastic-neT Signatures (TARGETS). We then validated these results on three independent cohorts. First, we showed concordant drug-response predictions in an external in-vitro database. Second, we demonstrated that our predictions were concordant with known FDA biomarkers-drug indications in a large cohort of sequenced tumors. Third, we validated TARGETS as a predictive biomarker of androgen receptor signaling inhibitor (ARSI) response in a unique dataset of metastatic prostate cancer patients. Finally, we evaluated the utility of TARGETS as a tool for targeted hypothesis generation in

¹Department of Human Oncology, University of Wisconsin, Madison, WI, USA. ²Department of Radiation Oncology, University of Michigan, Ann Arbor, MI, USA. ³Carbone Cancer Center, University of Wisconsin, Madison, WI, USA. ⁴Department of Medicine, University of Wisconsin, Madison, WI, USA. ⁵Department of Biostatistics and Medical Informatics, University of Wisconsin, Madison, WI, USA. ⁶Department of Radiation Oncology, UCSF, San Francisco, CA, USA. ⁷Helen Diller Family Comprehensive Cancer Center, UCSF, San Francisco, CA, USA. ⁸Department of Epidemiology and Biostatistics, UCSF, San Francisco, CA, USA. ⁹Division of Hematology and Oncology, Department of Medicine, UCSF, San Francisco, CA, USA. ¹⁰Department of Urology, UCSF, San Francisco, CA, USA. ¹¹William S. Middleton Memorial Veterans Hospital, Madison, WI, USA. ¹²These authors jointly supervised this work: Felix Y. Feng, Shuang G. Zhao. ✉email: shgzhaoh@humonc.wisc.edu

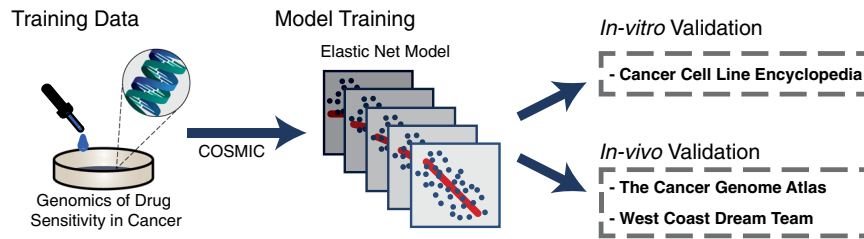


Fig. 1 TARGETS Workflow. Flowchart depicting TARGETS model training on DNA and RNA sequencing data from the Genomics of Drug Sensitivity in Cancer (GDSC) database to predict drug response. Model training was performed utilizing Elastic Net regression. The drug models were locked and subsequently validated on three independent cohorts: the Cancer Cell Line Encyclopedia (CCLE), The Cancer Genome Atlas (TCGA) pan-cancer database, and the West Coast Dream Team (WCdT) metastatic prostate cancer database.

identifying new drug indications. This pan-cancer, platform-independent approach can be used to better identify responders vs. non-responders and could potentially identify new patient populations which would benefit from specific treatments.

RESULTS

Training models on the GDSC database

Our training cohort was the publicly available Genomics of Drug Sensitivity in Cancer (GDSC) database^{12–14} (Fig. 1). To reduce the noise in the data, we included only genes identified by the COSMIC Cancer Gene Census¹⁵. This critical step allowed us to leverage the extensive knowledge on cancer genomics to improve the signal-to-noise ratio and prediction accuracy. Elastic-Net regression models were then trained using the RNA expression and DNA mutation data on only the COSMIC genes for all treatments in the GDSC. The TARGETS models were locked and used for all subsequent predictions without modification.

Concordance with CCLE drug sensitivity

We next examined if the TARGETS predictions could successfully predict cell line drug response in an independent dataset from the Cancer Cell Line Encyclopedia (CCLE)¹⁶. Eighteen drugs were present in both CCLE and GDSC, allowing us to independently validate the performance of those 18 TARGETS models in CCLE. We compared the TARGETS predictions with the drug sensitivities in CCLE and found that 18 out of 18 were significantly correlated after adjusting for multiple testing (FDRs <0.05, Table 1). Validation of all models in an independent cell line drug response cohort provides additional experimental evidence supporting the TARGETS approach.

Concordance with Known biomarker-drug combinations in the TCGA

Data on 9430 patients from 32 cancer types from The Cancer Genome Atlas (TCGA)¹⁷ was used to compare TARGETS with known biomarker-drug combinations. The distribution of predicted sensitivities varies widely across tumors and drugs. When we plotted the TARGETS predictions for all drugs across all tumor types, we observed that samples with the same tumor types tended to cluster together, as well as certain DNA alterations which tend to be highly enriched in certain tumor types (Fig. 2). This is consistent with the evidence that many anti-cancer drugs tend to work better in specific tumor types, an assumption underlying current clinical practice. However, there is also a minority of samples that appear to be dissimilar to their tissue-of-origin and cluster better with other tumor types, highlighting the limitation of tumor-type-driven treatment decisions and the potential benefit of a molecularly driven approach. Predictions of drug sensitivity using TARGETS were made for all drugs and samples. We next tested our TARGETS predictions against all FDA-approved somatic biomarker indications (Supplementary Data 1).

Table 1. TARGETS predictions correlate with CCLE drug sensitivity.

Drug	Corr. coef.	P-value	FDR
Nilotinib	0.6 [0.66, 0.53]	5.95E–38	2.14E–37
Tanespimycin	0.25 [0.33, 0.16]	8.95E–08	1.07E–07
PHA-665752	0.24 [0.33, 0.15]	1.45E–07	1.63E–07
Lapatinib	0.49 [0.56, 0.42]	4.06E–29	9.13E–29
Nutlin-3a (-)	0.26 [0.35, 0.18]	1.11E–08	1.43E–08
Saracatinib	0.22 [0.31, 0.13]	1.38E–06	1.46E–06
Crizotinib	0.45 [0.52, 0.37]	6.06E–24	1.09E–23
Panobinostat	0.61 [0.67, 0.55]	1.83E–48	3.29E–47
Sorafenib	0.42 [0.49, 0.34]	1.45E–20	2.18E–20
Irinotecan	0.65 [0.71, 0.57]	1.11E–35	3.33E–35
Topotecan	0.58 [0.64, 0.52]	3.97E–43	3.57E–42
PD0325901	0.57 [0.63, 0.51]	1.27E–41	7.63E–41
Palbociclib	0.23 [0.32, 0.14]	3.45E–06	3.45E–06
Paclitaxel	0.51 [0.57, 0.44]	2.97E–31	7.64E–31
Selumetinib	0.48 [0.55, 0.4]	1.51E–27	3.03E–27
PLX-4720	0.57 [0.63, 0.51]	7.66E–41	3.45E–40
NVP-TAE684	0.34 [0.42, 0.26]	6.76E–14	9.36E–14
Erlotinib	0.45 [0.52, 0.37]	1.13E–23	1.84E–23

Pearson's correlation between TARGETS predictions in CCLE and drug sensitivity as measured by the negative AUC.
FDR Benjamini Hochberg corrected false discovery rate.

For all biomarker-drug combinations tested, differences in drug sensitivity as predicted by TARGETS were in line with what was expected based on the indication (Fig. 3). EGFR mutated lung adenocarcinomas were predicted to be more sensitive to Erlotinib, Gefitinib, Afatinib and Osimertinib (all with $p < 0.0001$). BRAF V600E/K mutated lung adenocarcinoma and cutaneous melanoma both were predicted to be more sensitive to Trametinib and Dabrafenib (all with $p < 0.001$). BRAF V600E/K mutant thyroid cancer was also predicted to be more sensitive to Dabrafenib ($p < 0.0001$). EML4/ALK fusion-positive lung adenocarcinoma was predicted to be borderline more sensitive to Alectinib ($p = 0.0632$) and EML4/ALK or ROS1 fusion-positive lung adenocarcinoma was predicted to be more sensitive to Crizotinib ($p = 0.044$). KRAS wild-type colon cancer with EGFR expression greater than the median was predicted to be more resistant to Cetuximab ($p < 0.0001$). PIK3CA mutated breast tumors were predicted to be more sensitive to Alpelisib. ER/PR positive breast cancer by histologic assessment was predicted to be more sensitive to Fulvestrant (an ER degrader, $p < 0.0001$) and HER2 positive breast cancer by histologic assessment was predicted to be more sensitive to Lapatinib ($p < 0.0001$). Midostaurin was not predicted to be significantly more sensitive in FLT3 mutant AML. However, the complete response rate even in FLT3 wild-type AML treated with

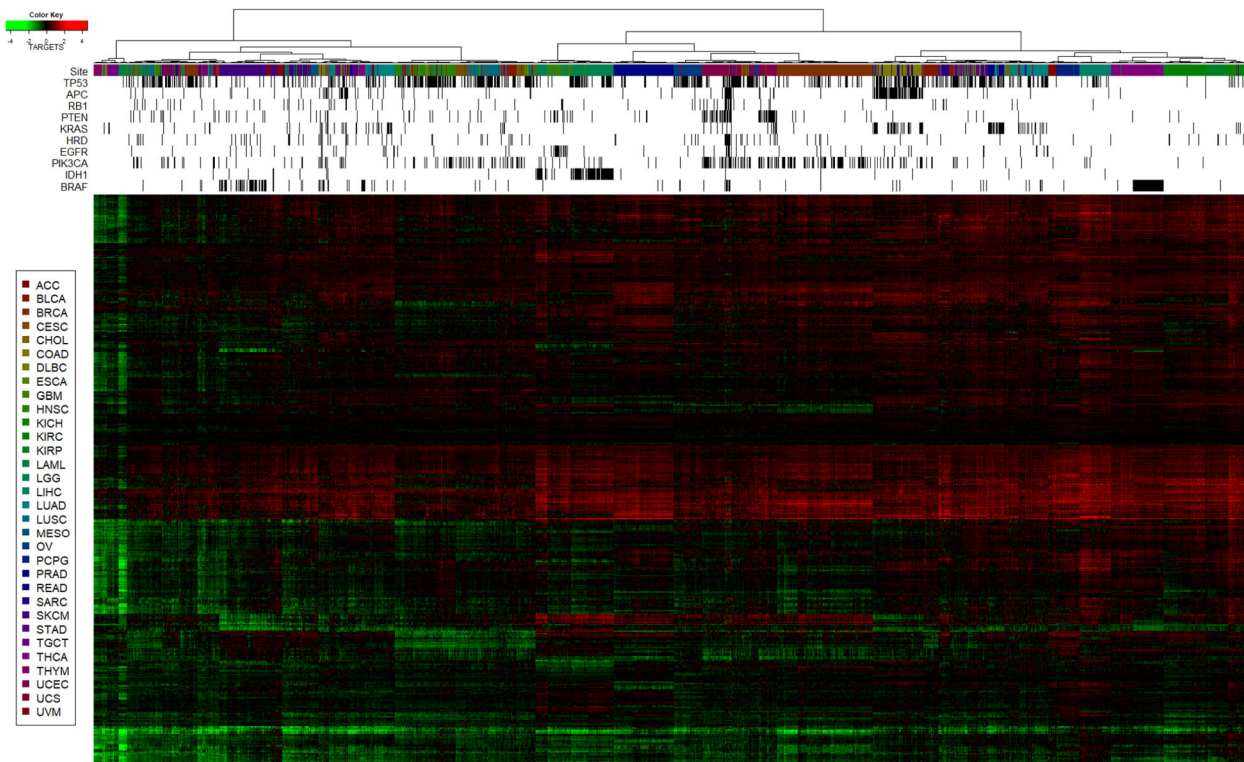


Fig. 2 TARGETS Scores in TCGA patients. TARGETS predictions for all drugs (rows) across all samples in the TCGA (columns) are shown in heatmap form. Hierarchical clustering was performed on both rows and columns. A lower TARGETS score indicates predicted sensitivity. Cancer site and type is identified using the TCGA standardized study abbreviations.

Midostaurin can be up to 74%^{18,19}. In addition to these FDA-approved indications, we tested other clinically used biomarker-drug combinations. In GBM, the benefit of Temozolomide is more pronounced in MGMT promoter methylated tumors^{20–23}, and we found MGMT-methylated glioblastoma was predicted to be more sensitive to Temozolomide ($p < 0.0001$). PARP inhibitors, such as Olaparib, are now indicated for both HRD and non-HRD ovarian cancers, and we also did not find a significant difference in sensitivity to Olaparib between HRD and non-HRD ovarian cancers²⁴. However, in prostate cancer, HRD tumors were predicted to be more sensitive to Olaparib ($p = 0.0025$), consistent with recent data from the phase III PROfound trial²⁵. These data therefore provide independent evidence that TARGETS predictions are concordant with FDA-approved biomarker indications.

Predicting ARSI response in metastatic prostate cancer

Metastatic castration-resistant prostate cancer (mCRPC) is a common lethal cancer type not represented in the TCGA, and is commonly treated with ARSIs such as Enzalutamide or Abiraterone. This cancer type represents an opportunity to clinically validate our approach in an independent patient cohort. We utilized metastatic biopsy RNA and DNA sequencing data as well as ARSI response data on 100 patients from the Stand Up to Cancer/Prostate Cancer Foundation West Coast Prostate Cancer Dream Team (WCDDT) cohort²⁶ to evaluate whether TARGETS could predict which patients may benefit from ARSI therapy. 50% PSA response is a common cutoff used in randomized trials in metastatic prostate cancer^{27–31}, and we used this as our primary clinical endpoint. We found that among patients receiving ARSIs as the next-line therapy after their biopsy, responders (defined as those who had 51–100% PSA response) were predicted to be more sensitive to ARSIs compared to the non-responders (0–50% PSA response) (Fig. 4a; $p = 0.0381$). There was no difference in the predicted sensitivity to ARSIs of responders and non-responders

who received other drugs ($p = 0.2143$), providing a control that shows the model is specific in identifying patients who will respond to ARSIs rather than just identifying those who will have a good response to treatment in general. In a logistic regression model predicting PSA response, the interaction between ARSI treatment and TARGETS score was statistically significant ($p = 0.0252$; Fig. 4b) indicating that TARGETS is a *bona fide* predictive biomarker for response to ARSIs^{32–36}.

Exploratory identification of potential therapeutic strategies with TARGETS

While mutations may occur randomly, those that provide a growth advantage are selected for in cancer. Frequent mutation of a gene may signal a tumor's dependence on that gene or pathway and therefore represents a potential therapeutic target. We hypothesized that examining specific mutations associated with TARGETS in clinical samples could identify known and novel therapeutic strategies. To this end, we identified the mutations most strongly correlated with TARGETS predictions in TCGA. The top 1% of putative mutation–drug sensitivity combinations are shown in Fig. 5a. Out of these 19 pairs, 17 were associations that would be reasonably expected given their mechanism of action (e.g., PIK3CA/PTEN mutations and PI3K/MTOR inhibitors, BRAF/KRAS mutations, and ERK/MAPK inhibitors). Overall, tumors with PIK3CA and PTEN mutations were predicted to be more sensitive to drugs that target the PI3K/MTOR pathway which is downstream of those genes. Tumors with KRAS and BRAF mutations were predicted to be more sensitive to drugs that target the ERK/MAPK pathway which is downstream of RAS/RAF signaling. In addition, Linsitinib, an IGF1R inhibitor, was predicted to be more effective in KRAS mutant tumors (Fig. 5b), consistent with experimental data in NSCLC³⁷. The final drug on the list, Elesclomol, was predicted to be more effective in IDH1 mutant tumors, especially gliomas (Fig. 5c), an association not previously reported in the literature. There were

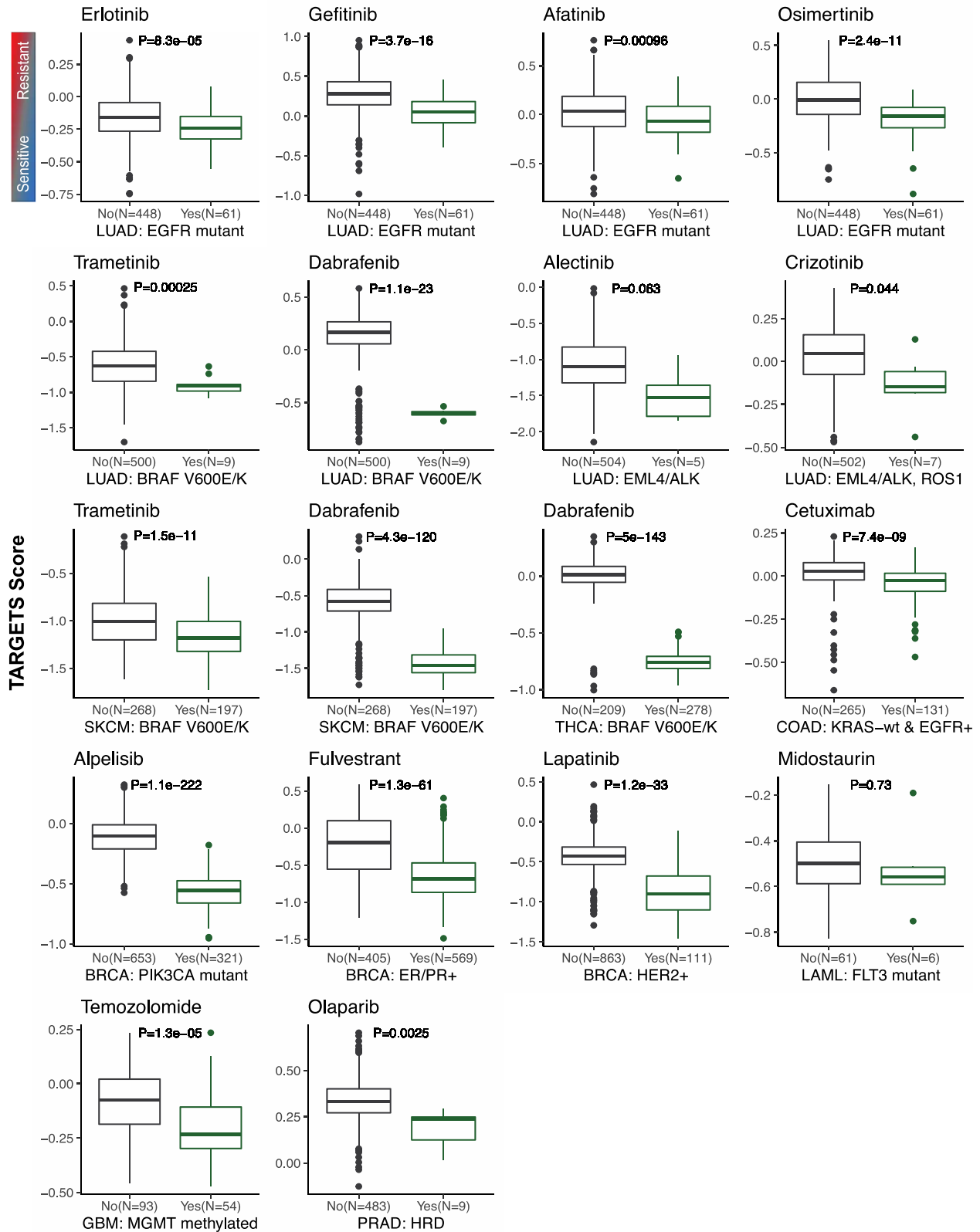


Fig. 3 TARGETS concordance with FDA-approved and clinically used biomarker indications. Boxplots comparing predicted TARGETS drug sensitivity among patients with or without a specific biomarker. Distributions were compared using an unpaired two-sample *t*-test, with *p*-value reported. A lower TARGETS score indicates increased predicted sensitivity. Cancer site and type for each plot is identified using the TCGA standardized study abbreviations. Boxplot center line = median; box limits = upper and lower quartiles; whiskers = 1.5× interquartile range.

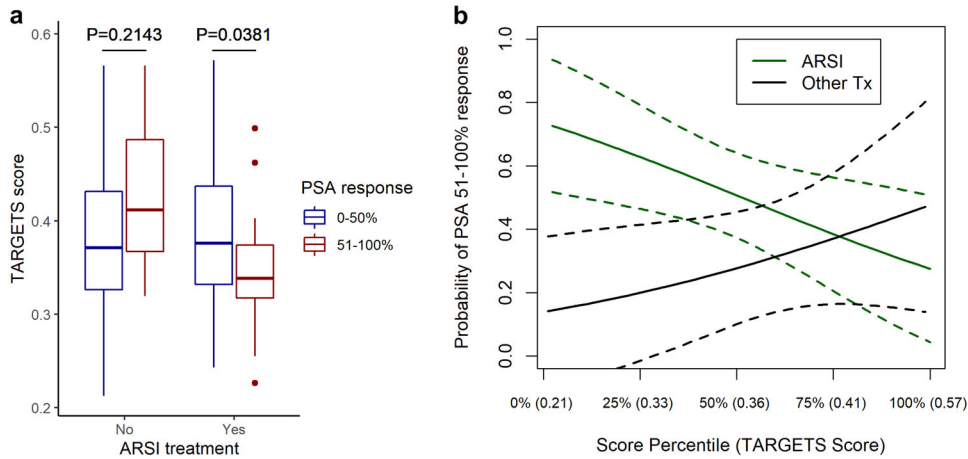


Fig. 4 Predicting response to ARSIs in mCRPC. **a** Patients receiving ARSIs who had a 51–100% response in PSA were predicted to be more sensitive by TARGETS than those with a 0–50% response. There was no difference in predicted sensitivity in those not treated. **b** Interaction plot showing the probability of PSA 51–100% response as a function of TARGETS score in the patients treated with an ARSI vs. other treatments. A lower TARGETS score indicates predicted sensitivity. Boxplot center line = median; box limits = upper and lower quartiles; whiskers = 1.5× interquartile range.

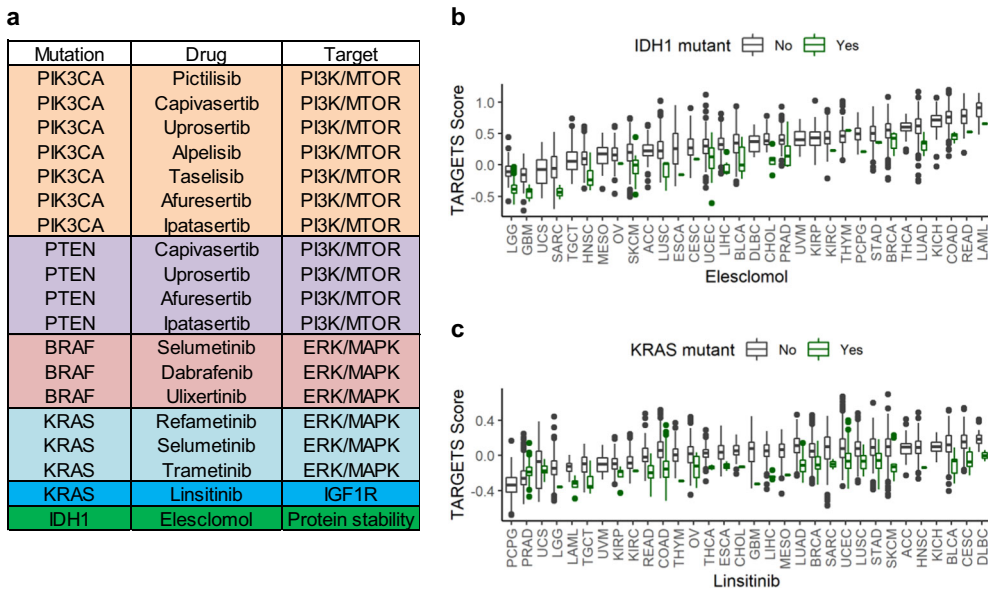


Fig. 5 Novel mutations predicted to confer drug sensitivity. **a** List of top 1% mutations predicted to confer sensitivity to a specific agent across tumor types. Linear model *p*-values all <0.0001. The rank is based on the normalized weighting of the model with each model. **b** Differences in TARGETS scores across 32 cancer types for Linsitinib. **c** Differences in TARGETS scores across 32 cancer types for Elesclomol. A lower TARGETS score indicates predicted sensitivity. Boxplot center line = median; box limits = upper and lower quartiles; whiskers = 1.5× interquartile range.

no IDH1 mutant LGG or GBM cell lines included in the GDSC, but TARGETS was nonetheless able to identify improved predicted Temozolomide response in MGMT methylated GBM patients (Fig. 3). These predictions represent hypothesis-generating extrapolations that go beyond the original training data, which can be used to identify potential novel therapeutic strategies.

DISCUSSION

Personalized genomic medicine has changed the paradigm of cancer treatment. Next-generation genomic sequencing has shifted treatment decisions from using radiologic and histologic data alone, to an approach that incorporates individualized molecular features. In this study, we set out to develop TARGETS, a pan-cancer, platform-independent model for predicting

sensitivity to therapy based on RNA expression and DNA mutation profiles. TARGETS was then validated across three datasets: the in-vitro CCLE and in vivo TCGA and WCDT datasets. Our predicted results were concordant for all 18 drugs that were common between the CCLE and GDSC, and TARGETS had consistent predictions with known biomarker-drug indications across the TCGA. Furthermore, we independently validated TARGETS as a predictive biomarker for ARSI response in mCRPC in the WCDT cohort. Finally, we evaluated TARGETS use as a tool for hypothesis generation in identifying new drug indications.

Many attempts have been made to develop in vitro pharmacogenomic response signatures based on the publicly available GDSC, CCLE, and TCGA datasets^{14,16,38–47}. TARGETS demonstrates a stronger level of concordance across all known biomarker-drug indications in clinical samples than has been

described in previously published studies⁴⁸. A few studies have also trained RNA-based signatures that were prognostic in clinical cohorts treated with specific agents^{49–51}. However, these studies have not necessarily identified predictive biomarkers, which are biomarkers that predict response only to a particular treatment, thus requiring validation data that includes untreated patients^{32–36}. This distinction is particularly important with regards to non-targeted therapies, such as traditional cytotoxic chemotherapies, which have been the focus of most of these prior studies. When no un-treated patient data exists, a signature for “response” may simply be measuring the overall aggressiveness of a tumor (e.g., prognosis), instead of providing truly predictive information specific to that agent. Statistical interaction testing, as we demonstrate, is required to identify truly predictive biomarkers^{32–36}.

The primary challenge in assessing the performance of TARGETS is locating suitable clinical validation datasets with both multi-omics and treatment response data. There are *in vitro* pharmacogenomic databases such as the CCLE in which we were able to perform validation. The CCLE is similar to the GDSC, including many shared cell lines as both were designed to be comprehensive catalogues of cancer cell lines. However, the two cohorts were distinct efforts in time and space, and there were significant differences in culture conditions, gene expression profiling, drug screen procedures, and many other major and minor factors, to the extent that significant discordance between the two datasets has been reported^{52,53}. The validation of 100% of TARGETS predictions in CCLE despite these differences provides strong supporting evidence for the approach. Ideally, clinical validation would be performed for every drug in every disease site. However, there is a lack of clinical cohorts with both DNA and RNA sequencing and detailed response data from both treated and untreated patients. Datasets such as the TCGA have the former but not the latter. Furthermore, systemic therapies are primarily used in the later stages of the disease, but obtaining invasive metastatic biopsies for molecular profiling is not routine. The WCDT is a unique cohort with both comprehensive molecular profiling and ARSI drug response data making it the ideal clinical dataset in which to validate TARGETS. The rarity of such clinical datasets highlights the need for DNA and RNA profiling in larger prospective studies with detailed treatment and outcomes data.

We believe the model development strategy presented herein has yielded improved generalizability and interpretability. First, our approach is unique in that we use only genes known to be strongly associated with cancer from the literature¹⁵. While it initially seems counter-intuitive that removing information from the vast majority of genes would be beneficial, a genome-wide approach suffers from a great deal of noise. Not only are many genes not important to treatment response or resistance, but cell lines in particular acquire many passenger mutations over time. Therefore, by focusing on a small set of cancer-associated genes, changes in gene expression or the presence of mutations are more likely to be driving a biological function. Second, integration of both DNA and RNA information into our models can provide information on tumors driven by specific gene expression patterns (e.g., receptors in breast cancer) as well as specific DNA alterations (e.g., EGFR mutations in lung cancer)^{46,54}. Finally, we chose to utilize Elastic-Net regression⁵⁵, because this regularized approach is less prone to over-fitting⁵⁶ and thus would better handle the biological and technical differences between the *in-vitro* training data and the clinical datasets.

TARGETS may also be able to identify new therapeutic strategies. Interestingly, our results show that IDH1 mutations are the second most highly weighted feature in the model for Elesclomol, and that they are highly associated with predicted Elesclomol sensitivity. Elesclomol is a copper chelator that has been found to interact with the electron transport chain in mitochondria to generate high levels of reactive oxygen species

(ROS)⁵⁷. IDH1 is well known for its role in the NADPH-dependent catalyzation of isocitrate to α -ketoglutarate (aKG), with IDH1 mutations leading to NADPH-dependent reduction of aKG to D-2-hydroxyglutarate (D2HG)⁵⁸. While D2HG has many downstream effects that contribute to tumorigenesis in IDH mutant tumors⁵⁹, this increased utilization of NADPH impacts the cell's ability to form a sufficient response to increased production of ROS. This mechanism could in part explain why IDH1-mutant glioma patients have better prognosis⁶⁰ and would mechanistically support our prediction of increased sensitivity to Elesclomol in IDH1-mutant tumors. To our knowledge, this association has not been previously documented in the literature and thus warrants further investigation to evaluate its use in IDH1-mutant tumors, particularly gliomas, which were predicted to have the greatest sensitivity to this agent with or without IDH1 mutation.

In conclusion, our study describes a pan-cancer, multi-omics approach for the identification of predictive biomarkers across tumor types. Many drugs demonstrate some efficacy in a minority of patients but lack sufficient clinical benefit in unselected populations to warrant FDA approval or clinical use. To date, we lack a unified global approach for identifying the patients most likely to benefit from specific therapies. TARGETS is platform-independent, and thus can be applied to a wide range of current and future datasets. RNA-seq should be normalized as described, and any DNA variant-calling pipeline can be used. There will of course be technical variation across different datasets. However, elastic-net regression is particularly well suited to handle some degree of noise, and our validation is on a variety of different platforms. TARGETS could be used in future clinical trials to select only patients most likely to benefit from the trial agent for inclusion, thus maximizing the chances of success.

METHODS

Literature review of FDA approved somatic biomarker indications in cancer

To establish a comprehensive list of all clinically approved biomarker-drug combinations to analyze in this study, we obtained a list of United States Food and Drug Administration (FDA) pharmacogenomic indications (www.fda.gov/drugs/science-and-research-drugs/table-pharmacogenomic-biomarkers-drug-labeling, version dated 5 February 2020; Supplementary Data 1). In addition to the biomarker-drug combinations in the FDA list, we also examined clinically utilized MGMT promoter methylation with Temozolomide in glioblastoma^{20–23} and homologous recombination deficiency with Olaparib in prostate cancer²⁵. While PARP inhibitors such as Olaparib are indicated for both HRD and non-HRD ovarian cancers²⁴ and are also indicated for germline BRCA1/2 mutant breast cancer, germline variants are restricted data in the TCGA, and our focus was on somatic variants, so these germline indications were not assessed. EML4-ALK and ROS1 fusions were called using the Jackson Laboratory Tumor Fusion Gene Data Portal (www.tumorfusions.org)⁶¹. As fusion partners for ROS1 are less well defined, only ROS1 fusions confirmed by WGS were included. ER, PR, HER2 positivity, MGMT promoter methylation, and FLT3 mutation were defined by the TCGA phenotypic data. All other mutations were defined by the sequencing data. EGFR staining was not available, and so EGFR positivity was defined as greater than median EGFR expression, based on literature supporting a range of EGFR positivity of 25–82% in colorectal cancer⁶².

Training in GDSC

Processed mutation calls and RNA-seq FPKM gene expression data on cancer cell lines publicly available through the GDSC were downloaded from the GDSC website (www.cancerxgene.org)¹². Mutations were coded as “present” only if they affected the protein-coding region of a gene (i.e., excluding silent, intronic, and inter-genic mutations), otherwise, they were coded as “not present”. Gene expression was Log₂ transformed, scaled to the median of the cohort, and treated as a continuous variable. We filtered variant and expression data to focus on the 702 COSMIC cancer genes present on all platforms in the training and validation cohorts¹⁵. The GDSC database contains IC₅₀ information for 449 drugs across 982 cell lines and

DNA and RNA sequencing data for these cell lines. To develop a model for each drug in the database, we used Elastic-Net regression, a regularized regression method that is a linear combination of the LASSO and Ridge methods. The Elastic-Net regression model is a penalized approach that produces biased coefficient estimates with a resulting decrease in variance, which can lead to an improvement in predictions compared to what can be achieved with a non-penalized regression model. This method also allows for feature selection, with coefficients of non-predictive features falling to zero or near-zero. To determine the optimized trade-off in bias and variance, cross validation is utilized to tune the two hyper-parameters of this model: the strength of the penalization (λ) and the proportion of LASSO versus Ridge penalty (α). An Elastic-Net model⁵⁵ was trained for all drugs in GDSC using the R caret wrapper for the GLMNET package, using the default parameters. Values for α and λ were selected using 10-fold cross validation. The reported Z-score of the half-maximal inhibitory concentration (IC_{50})¹² of each drug experiment was used as the measure of response in our model. The final output model from the Elastic-Net training procedure is in the form of a standard linear model, and the intercept and coefficients of all models described below can be found in Supplementary Data 2. The predictions from these models represent the TARGETS scores. Of note, immunotherapies were not tested in the GDSC and are not represented in TARGETS because these depend on the interaction between the tumor and host immune system, which was not modeled in the GDSC cell line experiments.

In vitro validation

Independent validation of cell line drug response predictions was performed in the CCLE dataset¹⁶. RNA and DNA sequencing data were downloaded from the CCLE website (portals.broadinstitute.org/ccle). Gene expression and mutation data were normalized and represented the same way as the GDSC, detailed above. Predictions were made using the locked models previously trained in GDSC. Eighteen previously trained drug-models from the GDSC had matching drug response data available in the CCLE. In the CCLE dataset, 55% of all the IC_{50} values were 8 μ M (the maximal tested concentration). Thus, we utilized the AUC instead, which provides drug response information even if the IC_{50} was not reached. Since higher AUC is associated with lower IC_{50} , we then compared the negative AUC determined from CCLE samples and compared to the GDSC predicted IC_{50} to determine the correlation between our two predictions. A Pearson's correlation coefficient was determined for all 18 comparisons and the Benjamini Hochberg False Discovery Rate (FDR) was reported for each comparison to control for multiple testing.

In vivo validation

TARGETS performance was evaluated in two clinical datasets: TCGA and the Stand Up to Cancer/Prostate Cancer Foundation WCDT. The TCGA processed sequencing and clinical data were downloaded using the UCSC Xena browser (xena.ucsc.edu)⁶³. The WCDT dataset contains 100 patients with mCRPC with both DNA and RNA sequencing²⁶, with Whole Genome Sequencing and RNA-seq data available at dbGAP (phs001648.v2.p1). We paired these data with previously unreported treatment response data to validate the ability of TARGETS to predict treatment response in this unique clinical cohort. Gene expression and mutation data were normalized and represented in the same manner as for both in-vitro datasets. Predictions were made with the GDSC-trained and locked models without modification. Comparisons of predicted Z-score IC_{50} between groups were performed using a *T*-test. Of note, the ARSI model as derived in GDSC was based on Bicalutamide, the only ARSI included in the training dataset. The ARSIs used in the WCDT were Enzalutamide and Abiraterone.

Identifying novel biomarker-drug pairs

We utilized the TARGETS predictions detailed above to globally identify mutations associated with predicted drug sensitivity in TCGA. A linear model was used for this step, and tumor site was also included to identify pan-cancer biomarker-drug pairs. This approach identified mutations that were associated with drug sensitivity, independent of the disease site. Only named drugs further along in the regulatory process⁶⁴ and mutations with a >5% frequency across all cancers were included. The *t*-statistic of the mutation in the linear model was used to rank the mutation-drug pairs, and the top 1% were selected for further investigation.

Ethics statement

The GDSC, CCLE, and TCGA data utilized in this study are all available publicly and thus no institutional review was required for data acquisition. The WCDT was a multi-institutional prospective Institutional Review Board (IRB) approved study (NCT02432001), including a tissue acquisition and molecular profiling protocol, with all study participants providing written informed consent to participate²⁶.

Reporting summary

Further information on research design is available in the Nature Research Reporting Summary linked to this article.

DATA AVAILABILITY

The data that support the findings of this study are available through the following locations. The Genomics of Drug Sensitivity in Cancer (GDSC) data were downloaded from the GDSC website (www.cancerrxgene.org). The Cancer Cell Line Encyclopedia (CCLE) dataset were downloaded from the CCLE website (portals.broadinstitute.org/ccle). The TCGA processed sequencing and clinical data were downloaded using the UCSC Xena browser (xena.ucsc.edu). The WCDT dataset with Whole Genome Sequencing and RNA-seq data is available at dbGAP (phs001648.v2.p1). Additional clinical data from the WCDT will be made upon request.

CODE AVAILABILITY

The TARGETS models are represented by linear models, and the co-efficients are available in Supplementary Data 2 which allow for generation of the TARGETS scores. All analysis was performed using R 4.0.3. Models were generated using R "caret" package with the following parameters: method = glmnet, trControl = trainControl (method = "repeatedCV", number = 10, repeats = 10).

Received: 24 May 2021; Accepted: 23 August 2021;

Published online: 21 September 2021

REFERENCES

- Bleeker, F. E. & Bardelli, A. Genomic landscapes of cancers: prospects for targeted therapies. *Pharmacogenomics* **8**, 1629–1633 (2007).
- Druker, B. J. Perspectives on the development of a molecularly targeted agent. *Cancer Cell* **1**, 31–36 (2002).
- Cobleigh, M. A. et al. Multinational study of the efficacy and safety of humanized anti-HER2 monoclonal antibody in women who have HER2-overexpressing metastatic breast cancer that has progressed after chemotherapy for metastatic disease. *J. Clin. Oncol.* **17**, 2639–2639 (1999).
- Russo, A. et al. Heterogeneous responses to epidermal growth factor receptor (EGFR) tyrosine kinase inhibitors (TKIs) in patients with uncommon EGFR mutations: new insights and future perspectives in this complex clinical scenario. *Int. J. Mol. Sci.* <https://doi.org/10.3390/ijms20061431> (2019).
- Mitsudomi, T. et al. Gefitinib versus cisplatin plus docetaxel in patients with non-small-cell lung cancer harbouring mutations of the epidermal growth factor receptor (WJTOG3405): an open label, randomised phase 3 trial. *Lancet Oncol.* **11**, 121–128 (2010).
- Han, J. Y. et al. First-SIGNAL: first-line single-agent icense versus gemcitabine and cisplatin trial in never-smokers with adenocarcinoma of the lung. *J. Clin. Oncol.* **30**, 1122–1128 (2012).
- Zhou, C. et al. Final overall survival results from a randomised, phase III study of erlotinib versus chemotherapy as first-line treatment of EGFR mutation-positive advanced non-small-cell lung cancer (OPTIMAL, CTONG-0802). *Ann. Oncol.* **26**, 1877–1883 (2015).
- Wu, Y. L. et al. First-line erlotinib versus gemcitabine/cisplatin in patients with advanced EGFR mutation-positive non-small-cell lung cancer: analyses from the phase III, randomized, open-label, ENSURE study. *Ann. Oncol.* **26**, 1883–1889 (2015).
- Rosell, R. et al. Erlotinib versus standard chemotherapy as first-line treatment for European patients with advanced EGFR mutation-positive non-small-cell lung cancer (EURTAC): a multicentre, open-label, randomised phase 3 trial. *Lancet Oncol.* **13**, 239–246 (2012).
- Paz-Ares, L. et al. Afatinib versus gefitinib in patients with EGFR mutation-positive advanced non-small-cell lung cancer: overall survival data from the phase IIb LUX-Lung 7 trial. *Ann. Oncol.* **28**, 270–277 (2017).
- Soria, J. C. et al. Osimertinib in untreated EGFR-mutated advanced non-small-cell lung cancer. *N. Engl. J. Med.* **378**, 113–125 (2018).

12. Yang, W. et al. Genomics of drug sensitivity in cancer (GDSC): a resource for therapeutic biomarker discovery in cancer cells. *Nucleic Acids Res.* **41**, D955–D961 (2013).
13. Garnett, M. J. et al. Systematic identification of genomic markers of drug sensitivity in cancer cells. **483**, 570–575 (2012).
14. Iorio, F. et al. A landscape of pharmacogenomic interactions in cancer. *Cell* **166**, 740–754 (2016).
15. Tate, J. G. et al. COSMIC: the catalogue of somatic mutations in cancer. *Nucleic Acids Res.* **47**, D941–D947 (2019).
16. Barretina, J. et al. The Cancer Cell Line Encyclopedia enables predictive modelling of anticancer drug sensitivity. *Nature* **483**, 603–607 (2012).
17. Weinstein, J. N. et al. The Cancer Genome Atlas Pan-Cancer analysis project. *Nat. Genet.* **45**, 1113–1120 (2013).
18. Stone, R. M. et al. Phase IB study of the FLT3 kinase inhibitor midostaurin with chemotherapy in younger newly diagnosed adult patients with acute myeloid leukemia. *Leukemia* **26**, 2061–2068 (2012).
19. Stone, R. M. et al. Midostaurin plus chemotherapy for acute myeloid leukemia with a FLT3 mutation. *N. Engl. J. Med.* **377**, 454–464 (2017).
20. Hegi, M. E. et al. MGMT gene silencing and benefit from temozolomide in glioblastoma. *N. Engl. J. Med.* **352**, 997–1003 (2005).
21. Malmstrom, A. et al. Temozolomide versus standard 6-week radiotherapy versus hypofractionated radiotherapy in patients older than 60 years with glioblastoma: the Nordic randomised, phase 3 trial. *Lancet Oncol.* **13**, 916–926 (2012).
22. Perry, J. R. et al. Short-course radiation plus temozolomide in elderly patients with glioblastoma. *N. Engl. J. Med.* **376**, 1027–1037 (2017).
23. Wick, W. et al. Temozolomide chemotherapy alone versus radiotherapy alone for malignant astrocytoma in the elderly: the NOA-08 randomised, phase 3 trial. *Lancet Oncol.* **13**, 707–715 (2012).
24. González-Martín, A. et al. Niraparib in patients with newly diagnosed advanced ovarian cancer. *N. Engl. J. Med.* **381**, 2391–2402 (2019).
25. Sandhu, S. K. et al. PROfound: Phase III study of olaparib versus enzalutamide or abiraterone for metastatic castration-resistant prostate cancer (mCRPC) with homologous recombination repair (HRR) gene alterations. *Ann. Oncol.* **30**, ix188–ix189 (2019).
26. Quigley, D. A. et al. Genomic hallmarks and structural variation in metastatic prostate cancer. *Cell* **175**, 889 (2018).
27. de Bono, J. S. et al. Abiraterone and increased survival in metastatic prostate cancer. *N. Engl. J. Med.* **364**, 1995–2005 (2011).
28. Hussain, M. et al. Enzalutamide in men with nonmetastatic, castration-resistant prostate cancer. *N. Engl. J. Med.* **378**, 2465–2474 (2018).
29. Scher, H. I. et al. Increased survival with enzalutamide in prostate cancer after chemotherapy. *N. Engl. J. Med.* **367**, 1187–1197 (2012).
30. Smith, M. R. et al. Apalutamide treatment and metastasis-free survival in prostate cancer. *N. Engl. J. Med.* **378**, 1408–1418 (2018).
31. Fizazi, K. et al. Darolutamide in nonmetastatic, castration-resistant prostate cancer. *N. Engl. J. Med.* **380**, 1235–1246 (2019).
32. Zhao, S. G. et al. Associations of luminal and basal subtyping of prostate cancer with prognosis and response to androgen deprivation therapy. *JAMA Oncol.* **3**, 1663–1672 (2017).
33. Zhao, S. G. et al. Development and validation of a 24-gene predictor of response to postoperative radiotherapy in prostate cancer: a matched, retrospective analysis. *Lancet Oncol.* [https://doi.org/10.1016/S1470-2045\(16\)30491-0](https://doi.org/10.1016/S1470-2045(16)30491-0) (2016).
34. Zhao, S. G. et al. The immune landscape of prostate cancer and nomination of PD-L2 as a potential therapeutic target. *J. Natl Cancer Inst.* **111**, 301–310 (2019).
35. Zhao, S. G. et al. Xenograft-based platform-independent gene signatures to predict response to alkylating chemotherapy, radiation, and combination therapy for glioblastoma. *Neuro Oncol.* <https://doi.org/10.1093/neuonc/noz090> (2019).
36. Ballman, K. V. Biomarker: predictive or prognostic? *J. Clin. Oncol.* **33**, 3968–3971 (2015).
37. Molina-Arcas, M., Hancock, D. C., Sheridan, C., Kumar, M. S. & Downward, J. Coordinate direct input of both KRAS and IGF1 receptor to activation of PI3 kinase in KRAS-mutant lung cancer. *Cancer Discov.* **3**, 548–563 (2013).
38. Polano, M. et al. A pan-cancer approach to predict responsiveness to immune checkpoint inhibitors by machine learning. *Cancers* <https://doi.org/10.3390/cancers11101562> (2019).
39. Reinhold, W. C. et al. Using drug response data to identify molecular effectors, and molecular “omic” data to identify candidate drugs in cancer. *Hum. Genet.* **134**, 3–11 (2015).
40. Wang, X., Sun, Z., Zimmermann, M. T., Bugrim, A. & Kocher, J. P. Predict drug sensitivity of cancer cells with pathway activity inference. *BMC Med. Genomics* **12**, 15 (2019).
41. Dhruva, S. R., Rahman, R., Matlock, K., Ghosh, S. & Pal, R. Application of transfer learning for cancer drug sensitivity prediction. *BMC Bioinforma.* **19**, 497 (2018).
42. Suphavitai, C., Bertrand, D. & Nagarajan, N. Predicting cancer drug response using a recommender system. *Bioinformatics* **34**, 3907–3914 (2018).
43. Wang, L., Li, X., Zhang, L. & Gao, Q. Improved anticancer drug response prediction in cell lines using matrix factorization with similarity regularization. *BMC Cancer* **17**, 513 (2017).
44. Pleasance, E. et al. Pan-cancer analysis of advanced patient tumors reveals interactions between therapy and genomic landscapes. *Nat. Cancer* **1**, 452–468 (2020).
45. Sharifi-Noghabi, H., Peng, S., Zolotareva, O., Collins, C. C. & Ester, M. AITL: Adversarial Inductive Transfer Learning with input and output space adaptation for pharmacogenomics. *bioRxiv*, 2020.2001.2024.918953 (2020).
46. Sharifi-Noghabi, H., Zolotareva, O., Collins, C. C. & Ester, M. MOLl: multi-omics late integration with deep neural networks for drug response prediction. *Bioinformatics* **35**, i501–i509 (2019).
47. Yang, J., Li, A., Li, Y., Guo, X. & Wang, M. A novel approach for drug response prediction in cancer cell lines via network representation learning. *Bioinformatics* **35**, 1527–1535 (2019).
48. Geleher, P. et al. Discovering novel pharmacogenomic biomarkers by imputing drug response in cancer patients from large genomics studies. *Genome Res.* **27**, 1743–1751 (2017).
49. Sakellaropoulos, T. et al. A deep learning framework for predicting response to therapy in cancer. *Cell Rep.* **29**, 3367–3373.e3364 (2019).
50. Lu, T. P. et al. Developing a prognostic gene panel of epithelial ovarian cancer patients by a machine learning model. *Cancers* <https://doi.org/10.3390/cancers11020270> (2019).
51. Geleher, P., Cox, N. J. & Huang, R. S. Clinical drug response can be predicted using baseline gene expression levels and in vitro drug sensitivity in cell lines. *Genome Biol.* **15**, R47 (2014).
52. Haibe-Kains, B. et al. Inconsistency in large pharmacogenomic studies. *Nature* **504**, 389–393 (2013).
53. Safikhani, Z. et al. Revisiting inconsistency in large pharmacogenomic studies. *F1000Res* **5**, 2333 (2016).
54. Rodon, J. et al. Genomic and transcriptomic profiling expands precision cancer medicine: the WINHER trial. *Nat. Med.* **25**, 751–758 (2019).
55. Zou, H. & Hastie, T. Regularization and variable selection via the elastic net. *J. R. Stat. Soc. Ser. B (Stat. Methodol.)* **67**, 301–320 (2005).
56. Rhys, H. I. *Machine Learning with R, the tidyverse, and mlr*. 1st edn. (Manning Publications, 2020).
57. Blackman, R. K. et al. Mitochondrial electron transport is the cellular target of the oncology drug elesclomol. *PLoS ONE* **7**, e29798 (2012).
58. Bergaggio, E. & Piva, R. Wild-type IDH enzymes as actionable targets for cancer therapy. *Cancers* <https://doi.org/10.3390/cancers11040563> (2019).
59. Tommasini-Ghelfi, S. et al. Cancer-associated mutation and beyond: The emerging biology of isocitrate dehydrogenases in human disease. *Sci. Adv.* **5**, eaaw4543 (2019).
60. Kaminska, B., Czapski, B., Guzik, R., Król, S. K. & Gielniewski, B. Consequences of IDH1/2 mutations in gliomas and an assessment of inhibitors targeting mutated IDH proteins. *Molecules* <https://doi.org/10.3390/molecules24050968> (2019).
61. Torres-García, W. et al. PRADA: pipeline for RNA sequencing data analysis. **30**, 2224–2226 (2014).
62. Spano, J. P. et al. Epidermal growth factor receptor signaling in colorectal cancer: preclinical data and therapeutic perspectives. *Ann. Oncol.* **16**, 189–194 (2005).
63. Goldman, M. J. et al. Visualizing and interpreting cancer genomics data via the Xena platform. *Nat. Biotechnol.* **38**, 675–678 (2020).
64. Karet, G. B. How do drugs get named? *AMA J. Ethics* **21**, E686–E696 (2019).

ACKNOWLEDGEMENTS

This research was supported by a DoD Prostate Cancer Research Program Physician Research Award (PC190039) to S.G.Z., a Stand Up To Cancer-Prostate Cancer Foundation Prostate Cancer Dream Team Award (SU2C-AACR-DT0812 to E.J.S.) and by the Movember Foundation (administered by the American Association for Cancer Research, the scientific partner of SU2C). S.G.Z. is supported by the University of Wisconsin OVRGE, Carbone Cancer Center Support Grant P30 CA014520, and the Department of Defense grants PC190039 and PC200334P2. J.M.L., D.A.Q., and F.Y.F. were funded by Prostate Cancer Foundation Challenge Awards. Additional funding was provided by a UCSF Benioff Initiative for Prostate Cancer Research award. M.S. was supported by the Swedish Research Council (Vetenskapsrådet) with grant number 2018–00382 and the Swedish Society of Medicine (Svenska Läkaresällskapet). The funders had no role in the study design, collection, analysis, interpretation of data, the writing of the manuscript, or the decision to submit the manuscript for publication.

AUTHOR CONTRIBUTIONS

N.R.R. and S.G.Z. contributed substantially to the conception and design of this report. F.Y.F., E.J.S., R.A., D.A.Q., M.Z., R.M.S., W.S.C. and M.S. contributed substantially

to the acquisition of data. All authors contributed substantially to the primary analysis, interpretation of the data, and drafting and revising of the manuscript. All authors approved the final manuscript and are accountable for all aspects of the work in ensuring that questions related to the accuracy or integrity of any part of the work are appropriately investigated and resolved.

COMPETING INTERESTS

J.M.L. holds equity in Salus Discovery LLC. R.A. has consulted for Janssen, Merck, AstraZeneca, Dendreon, Clovis, Pfizer, Amgen; RA has research funding from Amgen, Merck, Novartis, AstraZeneca, Xynomic, Zenith Epigenetics. E.J.S. has consulted for Janssen, Fortis Therapeutics, Harpoon Therapeutics, Teon Therapeutics. F.Y.F. has consulted for Astellas, Bayer, BlueEarth Diagnostics, Celgene, EMD Serono, Genentech, Janssen, Myovant, Ryovant, BMS, Exact Sciences, Varian, and serves on the scientific advisory board for Blueprint Genomics and Serimmune. S.L.C. is an employee of Exact Sciences. S.G.Z., S.L.C., and F.Y.F. have patent applications with Decipher Biosciences on molecular signatures in prostate cancer unrelated to this work. S.G.Z. and F.Y.F. have a patent application for a molecular signature in breast cancer unrelated to this work licensed to Exact Sciences. N.R.R., E.P., M.Y., M.S., H.B., G.F., K.T.H., M.L.B., W.S.C., R.M.S., M.Z., D.A.Q., and D.R.W. declare no competing interests.

ADDITIONAL INFORMATION

Supplementary information The online version contains supplementary material available at <https://doi.org/10.1038/s41525-021-00239-z>.

Correspondence and requests for materials should be addressed to Shuang G. Zhao.

Reprints and permission information is available at <http://www.nature.com/reprints>

Publisher's note Springer Nature remains neutral with regard to jurisdictional claims in published maps and institutional affiliations.



Open Access This article is licensed under a Creative Commons Attribution 4.0 International License, which permits use, sharing, adaptation, distribution and reproduction in any medium or format, as long as you give appropriate credit to the original author(s) and the source, provide a link to the Creative Commons license, and indicate if changes were made. The images or other third party material in this article are included in the article's Creative Commons license, unless indicated otherwise in a credit line to the material. If material is not included in the article's Creative Commons license and your intended use is not permitted by statutory regulation or exceeds the permitted use, you will need to obtain permission directly from the copyright holder. To view a copy of this license, visit <http://creativecommons.org/licenses/by/4.0/>.

This is a U.S. government work and not under copyright protection in the U.S.; foreign copyright protection may apply 2021