

UC Berkeley

Parks Stewardship Forum

Title

Cliff Jumping at St. Mary's Glacier

Permalink

<https://escholarship.org/uc/item/6n40h4qr>

Journal

Parks Stewardship Forum, 38(1)

Author

Cajandig-Taylor, Hannah

Publication Date

2022

DOI

10.5070/P538156130

Copyright Information

Copyright 2022 by the author(s). This work is made available under the terms of a Creative Commons Attribution-NonCommercial License, available at <https://creativecommons.org/licenses/by-nc/4.0/>

Peer reviewed



VERSE IN PLACE

HANNAH CAJANDIG-TAYLOR

Cliff Jumping at St. Mary's Glacier

This did not happen
when I was standing at the basin

picking rocks from the water
until my hands went numb

& I was in love with things
created from seismic activity.

I filled my pockets with the fallen
pieces of earth, gesturing in jarring pieces

to everything that treads over it.
If I took a walk one night

on another planet, I would hope
for an overlap in our moons

where the distant stars
would burn cold & weighted

but we would still be able to see
one another from our own

awayness. Even after the moons
had shifted places

& the earth's plates
were licked clean of their crumbs,

I would still be able to miss you.

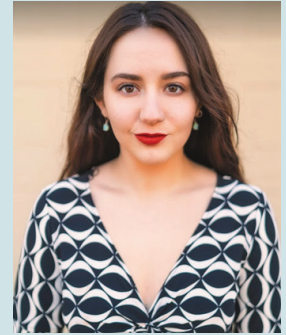
(more) ↓



VERSE IN PLACE

HANNAH CAJANDIG-TAYLOR (she/her) is a poet and flash writer residing in Michigan's Upper Peninsula. She's the author of *Romantic Portrait of a Natural Disaster* (Finishing Line Press, 2020) and has published work in journals such as *Gigantic Sequins*, *Milk Candy Review*, and *Trampset*, among others. She's been nominated for a Best Small Fictions, Best Micro Fictions, and recently had a piece featured in Wigleaf's Top 50 of 2021. When she isn't listening to a podcast or hiking with her dogs, she can be found bartending in a historic hotel.

- Website: www.hannahcajandigtaylor.com
- Twitter: @hannahcajandigt
- Book/Press: www.finishinglinepress.com



HANNAH CAJANDIG



The Interdisciplinary Journal of Place-based Conservation

Co-published by the **Institute for Parks, People, and Biodiversity**, University of California, Berkeley and the **George Wright Society**. ISSN 2688-187X

Berkeley **Institute for Parks, People, and Biodiversity**



Citation for this article

Cajandig-Taylor, Hannah. 2022. Cliff Jumping at St. Mary's Glacier. *Parks Stewardship Forum* 38(1): 173-174

Parks Stewardship Forum explores innovative thinking and offers enduring perspectives on critical issues of place-based heritage management and stewardship. Interdisciplinary in nature, the journal gathers insights from all fields related to parks, protected/conserved areas, cultural sites, and other place-based forms of conservation. The scope of the journal is international. It is dedicated to the legacy of **George Meléndez Wright**, a graduate of UC Berkeley and pioneer in conservation of national parks.

Parks Stewardship Forum is published online at <https://escholarship.org/uc/psf> through **eScholarship**, an open-access publishing platform subsidized by the University of California and managed by the California Digital Library. Open-access publishing serves the missions of the IPPB and GWS to share, freely and broadly, research and knowledge produced by and for those who manage parks, protected areas, and cultural sites throughout the world. A version of *Parks Stewardship Forum* designed for online reading is also available at <https://parks.berkeley.edu/psf>. For information about publishing in PSF, write to psf@georgewright.org.

Parks Stewardship Forum is distributed under a Creative Commons Attribution-NonCommercial 4.0 International License (CC BY-NC 4.0).

The journal continues *The George Wright Forum*, published 1981–2018 by the George Wright Society.

PSF is designed by Laurie Frasier • lauriefrasier.com



On the cover of this issue

The precipitous rock spires of Meteora World Heritage Site in Greece have a complex geological history. Over the centuries a number of Eastern Orthodox monasteries were built atop them, and today's World Heritage Site recognizes this cultural history as part of the overall geoheritage. | [STATHIS FLOROS](#)